



Full wwPDB X-ray Structure Validation Report

Feb 28, 2014 – 12:29 PM GMT

PDB ID : 1NQ9
Title : Crystal Structure of Antithrombin in the Pentasaccharide-Bound Intermediate State
Authors : Huntington, J.A.; Johnson, D.J.D.
Deposited on : 2003-01-21
Resolution : 2.60 Å (reported)

This is a full wwPDB validation report for a publicly released PDB entry.
We welcome your comments at validation@mail.wwpdb.org
A user guide is available at <http://wwpdb.org/ValidationPDFNotes.html>

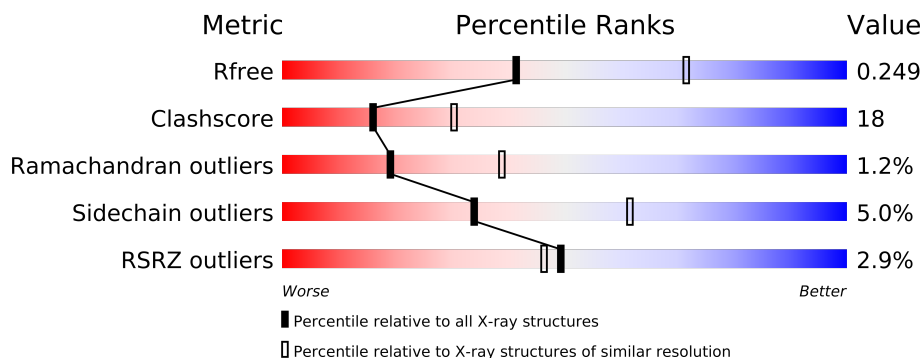
The following versions of software and data (see [references](#)) were used in the production of this report:

MolProbity : 4.02b-467
Mogul : 1.15 2013
Xtriage (Phenix) : dev-1323
EDS : stable22639
Percentile statistics : 21963
Refmac : 5.8.0049
CCP4 : 6.3.0 (Settle)
Ideal geometry (proteins) : Engh & Huber (2001)
Ideal geometry (DNA, RNA) : Parkinson et. al. (1996)
Validation Pipeline (wwPDB-VP) : stable22683

1 Overall quality at a glance

The reported resolution of this entry is 2.60 Å.

Percentile scores (ranging between 0-100) for global validation metrics of the entry are shown in the following graphic. The table shows the number of entries on which the scores are based.



Metric	Whole archive (#Entries)	Similar resolution (#Entries, resolution range(Å))
R_{free}	66092	1718 (2.60-2.60)
Clashscore	79885	2154 (2.60-2.60)
Ramachandran outliers	78287	2113 (2.60-2.60)
Sidechain outliers	78261	2113 (2.60-2.60)
RSRZ outliers	66119	1718 (2.60-2.60)

The table below summarises the geometric issues observed across the polymeric chains and their fit to the electron density. The red, orange, yellow and green segments on the lower bar indicate the fraction of residues that contain outliers for ≥ 3 , 2, 1 and 0 types of geometric quality criteria. The upper red bar (where present) indicates the fraction of residues that have poor fit to the electron density.

Mol	Chain	Length	Quality of chain
1	I	432	
1	L	432	

The following table lists non-polymeric compounds that are outliers for geometric or electron-density-fit criteria:

Mol	Type	Chain	Res	Geometry	Electron density
2	NAG	I	801	-	X

2 Entry composition i

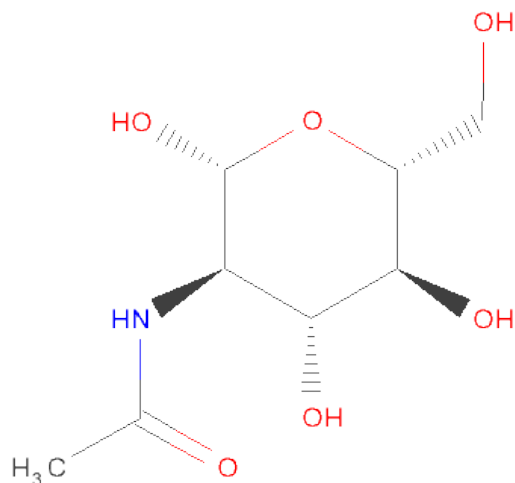
There are 5 unique types of molecules in this entry. The entry contains 6779 atoms, of which 0 are hydrogen and 0 are deuterium.

In the tables below, the ZeroOcc column contains the number of atoms modelled with zero occupancy, the AltConf column contains the number of residues with at least one atom in alternate conformation and the Trace column contains the number of residues modelled with at most 2 atoms.

- Molecule 1 is a protein called Antithrombin-III.

Mol	Chain	Residues	Atoms					ZeroOcc	AltConf	Trace
1	I	406	Total	C	N	O	S	0	1	0
			3162	2021	529	595	17			
1	L	413	Total	C	N	O	S	0	0	0
			3216	2055	530	613	18			

- Molecule 2 is SUGAR (N-ACETYL-D-GLUCOSAMINE) (three-letter code: NAG) (formula: $C_8H_{15}NO_6$).

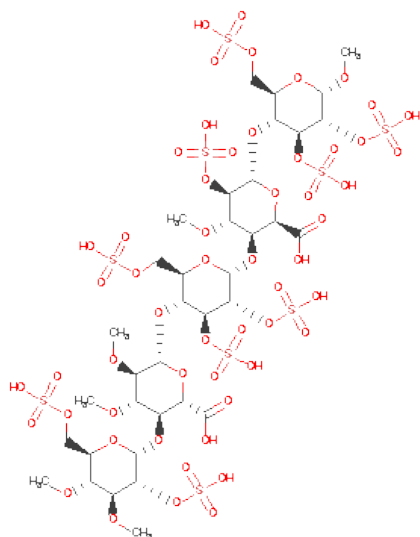


Mol	Chain	Residues	Atoms				ZeroOcc	AltConf
2	I	1	Total	C	N	O	0	0
			14	8	1	5		
2	L	1	Total	C	N	O	0	0
			14	8	1	5		

- Molecule 3 is a polymer of unknown type called SUGAR (2-MER).

Mol	Chain	Residues	Atoms				ZeroOcc	AltConf
3	I	2	Total	C	N	O	0	0
			28	16	2	10		
3	L	2	Total	C	N	O	0	0
			28	16	2	10		
3	L	2	Total	C	N	O	0	0
			28	16	2	10		

- Molecule 4 is HEPARIN PENTASACCHARIDE (three-letter code: NTP) (formula: $C_{36}H_{60}O_{55}S_9$).



Mol	Chain	Residues	Atoms				ZeroOcc	AltConf
4	I	1	Total	C	O	S	0	0
			100	36	55	9		
4	L	1	Total	C	O	S	0	0
			100	36	55	9		

- Molecule 5 is water.

Mol	Chain	Residues	Atoms		ZeroOcc	AltConf
5	I	36	Total	O	0	0
			36	36		
5	L	53	Total	O	0	0
			53	53		

4 Data and refinement statistics

Property	Value	Source
Space group	P 1 21 1	Depositor
Cell constants a, b, c, α , β , γ	69.68Å 86.76Å 96.92Å 90.00° 109.54° 90.00°	Depositor
Resolution (Å)	24.43 – 2.60 24.43 – 2.60	Depositor EDS
% Data completeness (in resolution range)	99.5 (24.43-2.60) 99.6 (24.43-2.60)	Depositor EDS
R_{merge}	0.09	Depositor
R_{sym}	0.09	Depositor
$\langle I/\sigma(I) \rangle$ ¹	1.95 (at 2.60Å)	Xtriage
Refinement program	CNS 1.0	Depositor
R, R_{free}	0.209 , 0.250 0.208 , 0.249	Depositor DCC
R_{free} test set	1666 reflections (5.24%)	DCC
Wilson B-factor (Å ²)	47.3	Xtriage
Anisotropy	0.473	Xtriage
Bulk solvent k_{sol} (e/Å ³), B_{sol} (Å ²)	0.34 , 36.9	EDS
Estimated twinning fraction	0.019 for h,-k,-h-l	Xtriage
L-test for twinning	$\langle L \rangle = 0.49$, $\langle L^2 \rangle = 0.32$	Xtriage
Outliers	0 of 33479 reflections	Xtriage
F_o, F_c correlation	0.94	EDS
Total number of atoms	6779	wwPDB-VP
Average B, all atoms (Å ²)	48.0	wwPDB-VP

Xtriage's analysis on translational NCS is as follows: *The largest off-origin peak in the Patterson function is 6.35% of the height of the origin peak. No significant pseudotranslation is detected.*

¹Intensities estimated from amplitudes.

5 Model quality

5.1 Standard geometry

Bond lengths and bond angles in the following residue types are not validated in this section: NTP, NAG

The Z score for a bond length (or angle) is the number of standard deviations the observed value is removed from the expected value. A bond length (or angle) with $|Z| > 5$ is considered an outlier worth inspection. RMSZ is the root-mean-square of all Z scores of the bond lengths (or angles).

Mol	Chain	Bond lengths		Bond angles	
		RMSZ	$\# Z > 5$	RMSZ	$\# Z > 5$
1	I	0.38	0/3226	0.60	0/4374
1	L	0.40	0/3279	0.65	0/4440
All	All	0.39	0/6505	0.63	0/8814

There are no bond length outliers.

There are no bond angle outliers.

There are no chirality outliers.

There are no planarity outliers.

5.2 Close contacts

In the following table, the Non-H and H(model) columns list the number of non-hydrogen atoms and hydrogen atoms in the chain respectively. The H(added) column lists the number of hydrogens added by MolProbity. The Clashes column lists the number of clashes within the asymmetric unit, and the number in parentheses is this value normalized per 1000 atoms of the molecule in the chain. The Symm-Clashes column gives symmetry related clashes, in the same way as for the Clashes column.

Mol	Chain	Non-H	H(model)	H(added)	Clashes	Symm-Clashes
1	I	3162	0	3061	128	0
1	L	3216	0	3136	108	0
2	I	14	0	13	0	0
2	L	14	0	13	0	0
3	I	28	0	25	5	0
3	L	56	0	50	5	0
4	I	100	0	49	5	0
4	L	100	0	49	0	0
5	I	36	0	0	0	0
5	L	53	0	0	2	0

Continued on next page...

Continued from previous page...

Mol	Chain	Non-H	H(model)	H(added)	Clashes	Symm-Clashes
All	All	6779	0	6396	240	0

Clashscore is defined as the number of clashes calculated for the entry per 1000 atoms (including hydrogens) of the entry. The overall clashscore for this entry is 18.

All (240) close contacts within the same asymmetric unit are listed below.

Atom-1	Atom-2	Distance(Å)	Clash(Å)
1:L:263:VAL:HG12	1:L:264:ALA:H	1.07	1.12
1:L:428:ASN:HD21	1:L:430:CYS:HB2	1.27	0.97
1:L:263:VAL:HG12	1:L:264:ALA:N	1.82	0.93
1:L:263:VAL:CG1	1:L:264:ALA:H	1.83	0.91
1:L:428:ASN:ND2	1:L:430:CYS:H	1.70	0.90
1:I:351:LEU:HB3	1:I:354:ILE:HD13	1.59	0.84
1:L:5:VAL:HG23	1:L:6:ASP:H	1.44	0.81
1:L:91:LYS:HE2	1:L:103:MET:HE3	1.64	0.79
1:I:66:LEU:HA	1:I:334:GLN:OE1	1.83	0.78
1:I:18:ASN:H	3:I:842:NAG:C8	1.95	0.78
1:L:258:PHE:HB2	1:L:316:LEU:HD21	1.67	0.76
3:L:841:NAG:H62	3:L:842:NAG:O5	1.85	0.76
1:I:14:ASP:O	1:I:16:PRO:HD3	1.87	0.75
1:I:23:TYR:CE2	1:I:100:GLN:HG3	2.22	0.75
1:L:428:ASN:HD22	1:L:430:CYS:H	1.32	0.74
3:L:861:NAG:H61	3:L:862:NAG:N2	2.02	0.74
3:L:861:NAG:H61	3:L:862:NAG:HN2	1.51	0.74
3:I:841:NAG:H62	3:I:842:NAG:HN2	1.53	0.73
1:L:183:ARG:HB2	1:L:207:ILE:HD12	1.70	0.72
1:L:235:ARG:HH11	1:L:235:ARG:HG3	1.55	0.71
1:I:18:ASN:H	3:I:842:NAG:H82	1.55	0.71
1:I:124:ALA:HB2	1:I:165:VAL:HG13	1.74	0.70
1:I:335:LEU:HD23	1:I:338:MET:HE3	1.74	0.70
1:I:425:ARG:HD3	1:I:427:ALA:HB2	1.75	0.69
1:I:133:LYS:HB3	1:I:278:ASP:OD2	1.93	0.69
1:I:207:ILE:HG23	1:I:211:THR:HG21	1.75	0.68
1:I:13:ARG:NH2	4:I:901:NTP:H482	2.09	0.68
1:I:62:PHE:HD2	1:I:338:MET:HE1	1.59	0.67
1:L:286:PRO:HD3	1:L:292:LEU:HD13	1.77	0.67
1:L:103:MET:HE1	1:L:108:PHE:CD2	2.30	0.67
1:I:258:PHE:HB2	1:I:316:LEU:HD21	1.77	0.66
1:L:62:PHE:HD1	1:L:338:MET:CE	2.10	0.65
1:I:325:ILE:HD11	1:I:426:VAL:HG22	1.78	0.65
1:L:428:ASN:HD22	1:L:428:ASN:C	1.99	0.64
1:L:62:PHE:HD1	1:L:338:MET:HE1	1.61	0.64

Continued on next page...

Continued from previous page...

Atom-1	Atom-2	Distance(Å)	Clash(Å)
1:L:204:SER:O	1:L:205:GLU:HB2	1.96	0.63
1:L:362:LEU:HB3	1:L:390:ILE:CG2	2.29	0.63
1:I:62:PHE:HD2	1:I:338:MET:CE	2.11	0.63
1:L:17:MET:HB2	1:L:161:ILE:HD13	1.80	0.63
1:I:11:LYS:O	1:I:14:ASP:HB2	1.99	0.63
1:I:108:PHE:O	1:I:111:ILE:HG12	1.99	0.62
1:L:130:LEU:CD2	1:L:414:GLU:HG3	2.29	0.62
1:I:204:SER:O	1:I:205:GLU:HG3	2.00	0.62
1:I:190:VAL:HG11	1:I:201:VAL:HG21	1.80	0.62
1:L:235:ARG:NH1	1:L:235:ARG:HG3	2.14	0.61
1:I:75:ASN:HB3	1:I:325:ILE:HG23	1.82	0.61
1:L:414:GLU:OE1	1:L:417:LEU:HD23	2.00	0.61
1:I:77:PHE:CZ	1:I:373:LEU:HB2	2.35	0.61
1:I:288:PRO:HB2	1:I:289:GLU:OE2	2.01	0.61
1:L:57:ARG:HG2	1:L:301:PRO:HG2	1.83	0.61
1:L:404:ALA:HB2	1:L:428:ASN:HB2	1.83	0.60
1:L:12:PRO:HB3	1:L:118:GLN:OE1	2.01	0.60
1:L:322:ARG:HD2	1:L:377:GLU:OE1	2.01	0.60
1:L:103:MET:HE1	1:L:108:PHE:CB	2.32	0.59
1:I:163:GLU:OE1	1:I:168:ALA:HA	2.03	0.58
1:I:91:LYS:HD2	1:I:119:ILE:HG21	1.86	0.58
1:L:428:ASN:HD21	1:L:430:CYS:CB	2.08	0.58
1:I:332:LYS:O	1:I:336:GLN:HG3	2.04	0.58
1:L:415:VAL:O	1:L:416:PRO:C	2.43	0.57
1:L:126:LEU:CD1	1:L:417:LEU:HD11	2.34	0.57
1:I:23:TYR:HE2	1:I:100:GLN:HG3	1.66	0.57
1:L:316:LEU:N	1:L:316:LEU:HD23	2.20	0.57
1:I:283:LEU:HD11	1:I:320:MET:HE3	1.87	0.57
1:I:42:GLU:HG2	1:I:43:ALA:N	2.20	0.56
1:I:413:ARG:HH11	1:I:413:ARG:HG2	1.71	0.56
1:I:335:LEU:HD23	1:I:338:MET:CE	2.35	0.56
1:I:269:VAL:HG12	1:I:311:LEU:HD21	1.88	0.56
1:I:99:LEU:O	1:I:103:MET:HG2	2.06	0.56
1:I:400:VAL:HG12	1:I:401:THR:N	2.21	0.56
1:I:7:ILE:N	1:I:7:ILE:HD12	2.22	0.55
1:L:77:PHE:CZ	1:L:373:LEU:HB2	2.40	0.55
1:I:120:HIS:H	1:I:120:HIS:CD2	2.22	0.55
1:I:13:ARG:HH11	1:I:13:ARG:CG	2.20	0.55
1:L:62:PHE:CD1	1:L:338:MET:CE	2.90	0.55
1:I:281:MET:HE3	1:I:320:MET:HE3	1.89	0.55
1:I:289:GLU:CD	1:I:289:GLU:H	2.09	0.54
1:I:144:ASN:HB3	1:I:166:TYR:OH	2.08	0.54

Continued on next page...

Continued from previous page...

Atom-1	Atom-2	Distance(Å)	Clash(Å)
1:I:190:VAL:HG21	1:I:201:VAL:HG21	1.89	0.54
1:I:219:ILE:O	1:I:371:ALA:HA	2.06	0.54
1:L:18:ASN:HD22	3:L:842:NAG:H62	1.72	0.54
1:I:281:MET:HE3	1:I:283:LEU:HD21	1.89	0.54
1:L:308:LEU:HD13	1:L:413:ARG:CZ	2.37	0.54
1:L:130:LEU:HD23	1:L:414:GLU:HG3	1.90	0.54
1:L:415:VAL:HB	1:L:416:PRO:HD3	1.89	0.54
1:L:417:LEU:HD23	1:L:417:LEU:H	1.73	0.53
1:L:91:LYS:NZ	1:L:120:HIS:NE2	2.37	0.53
1:I:13:ARG:NH1	1:I:13:ARG:HG3	2.22	0.53
1:I:316:LEU:H	1:I:316:LEU:HD23	1.72	0.53
1:L:77:PHE:CE1	1:L:373:LEU:HD22	2.42	0.53
1:L:347:GLU:OE2	1:L:347:GLU:N	2.41	0.53
1:L:285:LEU:HD12	1:L:285:LEU:N	2.24	0.53
1:L:263:VAL:HG11	1:L:307:TRP:HE1	1.74	0.52
1:I:91:LYS:O	1:I:91:LYS:HD3	2.09	0.52
1:L:145:ARG:HG2	1:L:147:PHE:CZ	2.43	0.52
1:I:283:LEU:HD11	1:I:320:MET:CE	2.40	0.52
1:L:298:GLU:O	1:L:300:THR:HG23	2.10	0.52
1:L:5:VAL:HG23	1:L:6:ASP:N	2.19	0.52
1:L:91:LYS:CE	1:L:103:MET:HE3	2.38	0.52
1:I:91:LYS:C	1:I:91:LYS:HD3	2.29	0.52
1:I:47:ARG:O	1:I:50:GLU:HG2	2.10	0.51
1:I:79:SER:HB3	1:I:82:SER:HB3	1.92	0.51
1:L:64:GLN:O	1:L:68:ASP:HB2	2.10	0.51
1:I:45:ASN:HA	4:I:901:NTP:H282	1.91	0.51
1:L:119:ILE:HD12	1:L:119:ILE:N	2.25	0.51
1:I:260:TYR:CG	1:I:261:ARG:N	2.79	0.51
1:L:91:LYS:HZ1	1:L:120:HIS:CE1	2.24	0.51
1:I:350:LYS:C	1:I:352:PRO:HD3	2.31	0.50
1:I:257:LYS:HA	1:I:314:MET:O	2.12	0.50
1:I:138:SER:HB3	1:I:221:PHE:CZ	2.45	0.50
1:L:365:SER:HB3	1:L:392:GLY:H	1.75	0.50
1:L:413:ARG:HH21	1:L:418:ASN:ND2	2.09	0.50
1:L:163:GLU:OE2	1:L:169:LYS:HE2	2.11	0.50
1:I:183:ARG:NH1	1:I:187:ASN:ND2	2.60	0.50
1:L:287:LYS:HG3	1:L:288:PRO:HD2	1.94	0.50
1:I:148:GLY:O	1:I:172:PRO:HA	2.11	0.50
1:L:322:ARG:HD2	1:L:377:GLU:OE2	2.12	0.50
1:L:12:PRO:HG3	1:L:121:PHE:CD2	2.47	0.50
1:L:51:LEU:CD2	1:L:123:PHE:HA	2.42	0.50
1:L:322:ARG:HD2	1:L:377:GLU:CD	2.31	0.49

Continued on next page...

Continued from previous page...

Atom-1	Atom-2	Distance(Å)	Clash(Å)
1:I:319:HIS:HB2	1:I:403:LYS:HA	1.94	0.49
1:I:40:ILE:HD11	1:I:44:THR:O	2.13	0.49
1:I:197:ARG:HB3	1:I:372:PHE:CE2	2.48	0.49
1:L:335:LEU:HD23	1:L:338:MET:HE1	1.93	0.49
1:I:413:ARG:HH11	1:I:413:ARG:CG	2.25	0.49
1:L:428:ASN:HD22	1:L:429:PRO:N	2.11	0.49
1:I:263:VAL:HG22	1:I:267:THR:O	2.13	0.49
1:I:62:PHE:CD2	1:I:338:MET:CE	2.95	0.49
1:I:260:TYR:OH	1:I:268:GLN:HG2	2.14	0.48
1:I:130:LEU:C	1:I:132:ARG:H	2.16	0.48
1:I:12:PRO:HG2	4:I:901:NTP:O3C	2.14	0.48
1:I:253:TYR:CE1	1:I:317:VAL:HG13	2.49	0.48
1:L:145:ARG:HG3	1:L:146:LEU:N	2.29	0.48
1:I:281:MET:HE3	1:I:320:MET:CE	2.43	0.48
1:L:401:THR:HG22	1:L:402:PHE:N	2.29	0.48
1:I:390:ILE:HG12	1:L:319:HIS:HB2	1.95	0.48
1:I:329:PHE:CD2	1:I:329:PHE:N	2.82	0.47
1:I:45:ASN:OD1	1:I:47:ARG:HB2	2.14	0.47
1:L:103:MET:HE1	1:L:108:PHE:HD2	1.77	0.47
1:I:271:GLU:OE2	1:I:413:ARG:NH1	2.38	0.47
1:L:40:ILE:HB	1:L:41:PRO:HD2	1.95	0.47
1:I:351:LEU:N	1:I:352:PRO:HD3	2.29	0.47
1:I:390:ILE:HA	1:L:319:HIS:HB2	1.96	0.47
1:L:428:ASN:C	1:L:428:ASN:ND2	2.68	0.47
1:I:306:GLU:O	1:I:310:GLU:HG3	2.14	0.47
1:I:316:LEU:N	1:I:316:LEU:HD23	2.30	0.47
1:L:212:VAL:HG21	1:L:362:LEU:HD22	1.95	0.47
1:I:324:ARG:HA	1:I:373:LEU:O	2.15	0.47
1:I:255:GLU:HG2	1:I:317:VAL:HG22	1.95	0.47
1:L:91:LYS:HE3	1:L:120:HIS:CE1	2.50	0.47
1:L:67:ALA:C	1:L:69:SER:H	2.18	0.47
1:I:204:SER:O	1:I:205:GLU:CG	2.63	0.46
1:L:103:MET:CE	1:L:108:PHE:HD2	2.28	0.46
1:I:18:ASN:H	3:I:842:NAG:H83	1.80	0.46
1:I:119:ILE:HG23	1:I:120:HIS:N	2.31	0.46
1:I:218:THR:HA	1:I:370:LYS:O	2.15	0.46
1:L:12:PRO:HG3	1:L:121:PHE:CE2	2.50	0.46
1:L:47:ARG:HG2	1:L:47:ARG:HH11	1.80	0.46
1:L:428:ASN:ND2	1:L:430:CYS:N	2.52	0.46
1:L:62:PHE:CD1	1:L:338:MET:HE2	2.51	0.46
1:I:253:TYR:HE1	1:I:317:VAL:CG1	2.29	0.46
1:L:284:ILE:HD13	1:L:307:TRP:CZ3	2.51	0.46

Continued on next page...

Continued from previous page...

Atom-1	Atom-2	Distance(Å)	Clash(Å)
1:I:13:ARG:NH1	1:I:13:ARG:CG	2.77	0.46
1:I:208:ASN:OD1	1:I:209:GLU:N	2.49	0.45
1:I:292:LEU:HD11	1:I:409:LEU:HG	1.99	0.45
1:L:125:LYS:HD2	5:L:915:HOH:O	2.16	0.45
1:I:332:LYS:HG3	1:I:344:PHE:CD1	2.51	0.45
1:I:159:GLN:OE1	1:I:169:LYS:HB2	2.16	0.45
1:I:58:PHE:HA	1:I:61:THR:HG22	1.99	0.45
1:L:62:PHE:CD1	1:L:338:MET:HE1	2.46	0.45
1:L:38:GLN:H	1:L:38:GLN:HG2	1.55	0.45
1:L:346:PRO:HG3	1:L:363:TYR:CE2	2.52	0.45
1:L:50:GLU:OE2	1:L:111:ILE:HB	2.17	0.45
1:I:306:GLU:OE1	1:I:310:GLU:OE2	2.35	0.45
1:L:414:GLU:OE2	1:L:416:PRO:HD2	2.16	0.44
1:I:183:ARG:HG2	1:I:183:ARG:HH11	1.82	0.44
1:L:263:VAL:HG11	1:L:307:TRP:NE1	2.31	0.44
1:I:62:PHE:CD2	1:I:338:MET:HE2	2.51	0.44
1:I:76:ILE:HA	1:I:327:ASP:OD2	2.17	0.44
1:I:13:ARG:HH11	1:I:13:ARG:HG3	1.81	0.44
1:L:316:LEU:N	1:L:316:LEU:CD2	2.81	0.44
1:I:149:ASP:HA	1:I:173:LEU:O	2.17	0.44
1:I:430:CYS:O	1:I:431:VAL:HB	2.17	0.44
1:I:316:LEU:CD2	1:I:316:LEU:N	2.81	0.44
1:I:351:LEU:HB3	1:I:354:ILE:CD1	2.39	0.43
1:I:400:VAL:CG1	1:I:401:THR:N	2.80	0.43
1:L:198:ILE:HG23	1:L:370:LYS:HG2	1.99	0.43
1:L:81:LEU:HD21	1:L:130:LEU:HD13	1.99	0.43
1:L:47:ARG:HG2	1:L:47:ARG:NH1	2.34	0.43
1:L:340:LEU:HA	1:L:340:LEU:HD23	1.80	0.43
1:L:47:ARG:CZ	1:L:114:LYS:HD3	2.48	0.43
1:L:66:LEU:O	1:L:70:LYS:HG3	2.18	0.43
1:I:269:VAL:CG1	1:I:311:LEU:HD21	2.48	0.43
1:L:124:ALA:HB2	1:L:165:VAL:HG13	2.00	0.43
1:L:71:ASN:O	1:L:73:ASN:N	2.52	0.43
1:L:314:MET:O	1:L:316:LEU:HD22	2.18	0.42
1:I:13:ARG:NH1	4:I:901:NTP:O56	2.52	0.42
1:I:62:PHE:HE1	1:I:78:LEU:HD13	1.84	0.42
4:I:901:NTP:O44	4:I:901:NTP:H31	2.19	0.42
1:I:183:ARG:HG2	1:I:183:ARG:NH1	2.35	0.42
1:I:125:LYS:O	1:I:128:CYS:HB2	2.18	0.42
1:I:86:ALA:O	1:I:89:MET:HB2	2.19	0.42
1:L:7:ILE:HG22	5:L:924:HOH:O	2.18	0.42
1:I:313:GLU:O	1:I:314:MET:HG3	2.19	0.42

Continued on next page...

Continued from previous page...

Atom-1	Atom-2	Distance(Å)	Clash(Å)
1:I:170:LEU:C	1:I:170:LEU:HD23	2.40	0.42
3:L:842:NAG:O7	3:L:842:NAG:H3	2.20	0.42
1:L:71:ASN:C	1:L:73:ASN:H	2.23	0.42
1:L:103:MET:HE1	1:L:108:PHE:HB2	2.00	0.42
1:I:190:VAL:HG11	1:I:201:VAL:CG2	2.47	0.42
1:I:287:LYS:HD2	1:I:289:GLU:OE1	2.19	0.42
1:I:258:PHE:CD2	1:I:316:LEU:HD21	2.55	0.42
1:I:47:ARG:NH1	1:I:114:LYS:HB3	2.34	0.42
1:I:94:ALA:HB3	1:I:99:LEU:HD13	2.02	0.42
1:L:273:PRO:HA	1:L:280:THR:HG22	2.02	0.42
1:I:197:ARG:NE	1:I:381:GLU:OE1	2.53	0.42
1:I:140:LEU:HD12	1:I:140:LEU:HA	1.90	0.41
1:L:404:ALA:HB3	1:L:427:ALA:HB1	2.01	0.41
1:L:335:LEU:HA	1:L:338:MET:HE3	2.02	0.41
1:I:332:LYS:HE2	1:I:365:SER:O	2.20	0.41
1:L:126:LEU:HD12	1:L:417:LEU:HD11	2.02	0.41
1:I:183:ARG:HH12	1:I:187:ASN:ND2	2.17	0.41
1:I:146:LEU:HG	1:I:215:LEU:HD13	2.03	0.41
1:I:20:MET:CE	3:I:841:NAG:H2	2.51	0.41
1:L:93:GLY:O	1:L:351:LEU:HA	2.21	0.41
1:I:115:THR:HA	1:I:122:PHE:CE2	2.56	0.41
1:I:42:GLU:HG2	1:I:43:ALA:H	1.84	0.41
1:L:18:ASN:HA	1:L:19:PRO:HD2	1.98	0.41
1:I:207:ILE:HG23	1:I:211:THR:CG2	2.47	0.41
1:L:119:ILE:N	1:L:119:ILE:CD1	2.84	0.41
1:L:215:LEU:N	1:L:215:LEU:HD12	2.36	0.41
1:I:397:PRO:HA	1:I:399:ARG:HH21	1.85	0.41
1:L:349:SER:O	1:L:350:LYS:HD2	2.21	0.41
1:L:71:ASN:C	1:L:73:ASN:N	2.74	0.40
1:I:412:ILE:HB	1:I:422:PHE:HB2	2.02	0.40
1:I:61:THR:HG23	1:I:62:PHE:N	2.36	0.40
1:I:329:PHE:H	1:I:329:PHE:HD2	1.69	0.40
1:I:76:ILE:HG22	1:I:77:PHE:N	2.36	0.40
1:I:40:ILE:HA	1:I:41:PRO:HD3	1.78	0.40
1:L:103:MET:CE	1:L:108:PHE:CD2	3.00	0.40
1:L:17:MET:O	1:L:18:ASN:O	2.40	0.40
1:I:252:MET:N	1:I:320:MET:O	2.47	0.40

There are no symmetry-related clashes.

5.3 Torsion angles

5.3.1 Protein backbone ⓘ

In the following table, the Percentiles column shows the percent Ramachandran outliers of the chain as a percentile score with respect to all X-ray entries followed by that with respect to entries of similar resolution. The Analysed column shows the number of residues for which the backbone conformation was analysed, and the total number of residues.

Mol	Chain	Analysed	Favoured	Allowed	Outliers	Percentiles	
1	I	399/432 (92%)	365 (92%)	31 (8%)	3 (1%)	27	53
1	L	405/432 (94%)	368 (91%)	30 (7%)	7 (2%)	14	26
All	All	804/864 (93%)	733 (91%)	61 (8%)	10 (1%)	19	39

All (10) Ramachandran outliers are listed below:

Mol	Chain	Res	Type
1	L	38	GLN
1	L	361	ASP
1	I	141	VAL
1	L	418	ASN
1	I	14	ASP
1	L	72	ASP
1	L	68	ASP
1	I	263	VAL
1	L	18	ASN
1	L	416	PRO

5.3.2 Protein sidechains ⓘ

In the following table, the Percentiles column shows the percent sidechain outliers of the chain as a percentile score with respect to all X-ray entries followed by that with respect to entries of similar resolution. The Analysed column shows the number of residues for which the sidechain conformation was analysed, and the total number of residues.

Mol	Chain	Analysed	Rotameric	Outliers	Percentiles	
1	I	338/383 (88%)	325 (96%)	13 (4%)	44	74
1	L	348/383 (91%)	327 (94%)	21 (6%)	27	51
All	All	686/766 (90%)	652 (95%)	34 (5%)	34	61

All (34) residues with a non-rotameric sidechain are listed below:

Mol	Chain	Res	Type
1	I	7	ILE
1	I	13	ARG
1	I	42	GLU
1	I	102	LEU
1	I	123	PHE
1	I	205	GLU
1	I	217	ASN
1	I	302	GLU
1	I	306	GLU
1	I	316	LEU
1	I	329	PHE
1	I	334	GLN
1	I	414	GLU
1	L	17	MET
1	L	18	ASN
1	L	23	TYR
1	L	36	SER
1	L	38	GLN
1	L	78	LEU
1	L	119	ILE
1	L	123	PHE
1	L	145	ARG
1	L	201	VAL
1	L	205	GLU
1	L	209	GLU
1	L	265	GLU
1	L	294	LYS
1	L	304	LEU
1	L	316	LEU
1	L	340	LEU
1	L	361	ASP
1	L	362	LEU
1	L	416	PRO
1	L	428	ASN

Some sidechains can be flipped to improve hydrogen bonding and reduce clashes. All (10) such sidechains are listed below:

Mol	Chain	Res	Type
1	I	120	HIS
1	I	171	GLN
1	I	268	GLN
1	I	319	HIS
1	L	18	ASN

Continued on next page...

Continued from previous page...

Mol	Chain	Res	Type
1	L	159	GLN
1	L	233	ASN
1	L	336	GLN
1	L	418	ASN
1	L	428	ASN

5.3.3 RNA ⓘ

There are no RNA chains in this entry.

5.4 Non-standard residues in protein, DNA, RNA chains ⓘ

There are no non-standard protein/DNA/RNA residues in this entry.

5.5 Carbohydrates ⓘ

6 carbohydrates are modelled in this entry.

In the following table, the Counts columns list the number of bonds (or angles) for which Mogul statistics could be retrieved, the number of bonds (or angles) that are observed in the model and the number of bonds (or angles) that are defined in the chemical component dictionary. The Link column lists molecule types, if any, to which the group is linked. The Z score for a bond length (or angle) is the number of standard deviations the observed value is removed from the expected value. A bond length (or angle) with $|Z| > 2$ is considered an outlier worth inspection. RMSZ is the root-mean-square of all Z scores of the bond lengths (or angles).

Mol	Type	Chain	Res	Link	Bond lengths			Bond angles		
					Counts	RMSZ	$\# Z > 2$	Counts	RMSZ	$\# Z > 2$
3	NAG	I	841	1,3	12,14,15	0.60	0	15,19,21	0.67	0
3	NAG	I	842	3	12,14,15	0.43	0	15,19,21	0.70	0
3	NAG	L	841	1,3	12,14,15	0.69	0	15,19,21	1.06	0
3	NAG	L	842	3	12,14,15	0.42	0	15,19,21	0.68	0
3	NAG	L	861	1,3	12,14,15	0.40	0	15,19,21	0.85	0
3	NAG	L	862	3	12,14,15	0.55	0	15,19,21	0.61	0

In the following table, the Chirals column lists the number of chiral outliers, the number of chiral centers analysed, the number of these observed in the model and the number defined in the chemical component dictionary. Similar counts are reported in the Torsion and Rings columns. '-' means no outliers of that kind were identified.

Mol	Type	Chain	Res	Link	Chirals	Torsions	Rings
3	NAG	I	841	1,3	-	0/6/23/26	0/1/1/1
3	NAG	I	842	3	-	0/6/23/26	0/1/1/1
3	NAG	L	841	1,3	-	0/6/23/26	0/1/1/1
3	NAG	L	842	3	-	0/6/23/26	0/1/1/1
3	NAG	L	861	1,3	-	0/6/23/26	0/1/1/1
3	NAG	L	862	3	-	0/6/23/26	0/1/1/1

There are no bond length outliers.

There are no bond angle outliers.

There are no chirality outliers.

There are no torsion outliers.

There are no ring outliers.

5.6 Ligand geometry ⓘ

4 ligands are modelled in this entry.

In the following table, the Counts columns list the number of bonds (or angles) for which Mogul statistics could be retrieved, the number of bonds (or angles) that are observed in the model and the number of bonds (or angles) that are defined in the chemical component dictionary. The Link column lists molecule types, if any, to which the group is linked. The Z score for a bond length (or angle) is the number of standard deviations the observed value is removed from the expected value. A bond length (or angle) with $|Z| > 2$ is considered an outlier worth inspection. RMSZ is the root-mean-square of all Z scores of the bond lengths (or angles).

Mol	Type	Chain	Res	Link	Bond lengths			Bond angles		
					Counts	RMSZ	$\# Z > 2$	Counts	RMSZ	$\# Z > 2$
2	NAG	I	801	1	12,14,15	0.49	0	15,19,21	0.58	0
4	NTP	I	901	-	104,104,104	1.32	10 (9%)	162,162,162	1.04	8 (4%)
2	NAG	L	801	1	12,14,15	0.39	0	15,19,21	0.71	0
4	NTP	L	901	-	104,104,104	1.31	12 (11%)	162,162,162	1.07	12 (7%)

In the following table, the Chirals column lists the number of chiral outliers, the number of chiral centers analysed, the number of these observed in the model and the number defined in the chemical component dictionary. Similar counts are reported in the Torsion and Rings columns. '-' means no outliers of that kind were identified.

Mol	Type	Chain	Res	Link	Chirals	Torsions	Rings
2	NAG	I	801	1	-	0/6/23/26	0/1/1/1
4	NTP	I	901	-	-	0/84/184/184	0/5/5/5
2	NAG	L	801	1	-	0/6/23/26	0/1/1/1

Continued on next page...

Continued from previous page...

Mol	Type	Chain	Res	Link	Chirals	Torsions	Rings
4	NTP	L	901	-	-	0/84/184/184	0/5/5/5

All (22) bond length outliers are listed below:

Mol	Chain	Res	Type	Atoms	Z	Observed(Å)	Ideal(Å)
4	I	901	NTP	C20-C21	4.02	1.59	1.52
4	L	901	NTP	C20-C21	3.79	1.59	1.52
4	I	901	NTP	C26-C20	3.31	1.58	1.52
4	L	901	NTP	C26-C20	3.05	1.58	1.52
4	I	901	NTP	C40-C41	3.00	1.57	1.52
4	L	901	NTP	C46-C40	2.71	1.57	1.52
4	L	901	NTP	C40-C41	2.70	1.57	1.52
4	L	901	NTP	O5M-C5L	2.66	1.44	1.40
4	L	901	NTP	O32-C3L	2.60	1.48	1.41
4	I	901	NTP	O3A-C39	-2.55	1.42	1.46
4	I	901	NTP	O5M-C5L	2.54	1.44	1.40
4	I	901	NTP	O5G-S5H	2.53	1.63	1.60
4	L	901	NTP	O5G-S5H	2.51	1.63	1.60
4	L	901	NTP	C1B-C12	2.44	1.57	1.52
4	L	901	NTP	C3L-C3F	2.25	1.58	1.52
4	I	901	NTP	C46-C40	2.23	1.56	1.52
4	L	901	NTP	O5G-C5F	-2.21	1.42	1.46
4	L	901	NTP	O3A-C39	-2.19	1.42	1.46
4	I	901	NTP	O3G-S3H	2.15	1.63	1.60
4	I	901	NTP	C4F-C49	2.07	1.57	1.52
4	L	901	NTP	O34-S35	2.05	1.64	1.57
4	I	901	NTP	O5G-C5F	-2.02	1.43	1.46

All (20) bond angle outliers are listed below:

Mol	Chain	Res	Type	Atoms	Z	Observed(°)	Ideal(°)
4	L	901	NTP	C4F-O42-C41	4.46	118.57	112.20
4	I	901	NTP	C4F-O42-C41	3.73	117.53	112.20
4	I	901	NTP	O4A-C49-C4F	2.72	111.35	107.58
4	L	901	NTP	C59-O5A-S5B	2.70	122.78	118.37
4	L	901	NTP	C15-O16-S17	2.60	120.11	116.76
4	I	901	NTP	C59-O5A-S5B	2.57	122.57	118.37
4	L	901	NTP	O4A-C49-C4F	2.55	111.11	107.58
4	L	901	NTP	C33-O34-S35	2.52	120.00	116.76
4	L	901	NTP	O25-C23-O24	-2.48	118.47	124.07
4	L	901	NTP	O3G-C3F-C3L	2.46	110.98	107.58
4	I	901	NTP	O25-C23-O24	-2.45	118.53	124.07

Continued on next page...

Continued from previous page...

Mol	Chain	Res	Type	Atoms	Z	Observed(°)	Ideal(°)
4	L	901	NTP	O45-C43-O44	-2.34	118.77	124.07
4	I	901	NTP	O45-C43-O44	-2.33	118.80	124.07
4	I	901	NTP	O3G-C3F-C3L	2.25	110.69	107.58
4	L	901	NTP	O45-C43-C41	2.16	121.36	113.49
4	L	901	NTP	O42-C4F-C49	2.11	113.78	109.52
4	L	901	NTP	C3F-O3G-S3H	2.10	121.80	118.37
4	I	901	NTP	O45-C43-C41	2.09	121.10	113.49
4	I	901	NTP	O42-C4F-C49	2.08	113.73	109.52
4	L	901	NTP	O5G-C5F-C5L	2.05	110.42	107.58

There are no chirality outliers.

There are no torsion outliers.

There are no ring outliers.

5.7 Other polymers ⓘ

There are no such residues in this entry.

5.8 Polymer linkage issues

There are no chain breaks in this entry.

6 Fit of model and data ⓘ

6.1 Protein, DNA and RNA chains ⓘ

In the following table, the column labelled ‘#RSRZ> 2’ contains the number (and percentage) of RSRZ outliers, followed by percent RSRZ outliers for the chain as percentile scores relative to all X-ray entries and entries of similar resolution. The OWAB column contains the minimum, median, 95th percentile and maximum values of the occupancy-weighted average B-factor per residue. The column labelled ‘Q< 0.9’ lists the number of (and percentage) of residues with an average occupancy less than 0.9.

Mol	Chain	Analysed	<RSRZ>	#RSRZ>2	OWAB(Å ²)	Q<0.9
1	I	406/432 (93%)	0.01	13 (3%) 45 42	24, 52, 85, 95	0
1	L	413/432 (95%)	-0.12	11 (2%) 52 49	15, 40, 71, 94	0
All	All	819/864 (94%)	-0.06	24 (2%) 49 46	15, 46, 82, 95	0

All (24) RSRZ outliers are listed below:

Mol	Chain	Res	Type	RSRZ
1	L	398	ASN	4.5
1	I	384	ALA	3.8
1	L	26	PRO	3.7
1	L	397	PRO	3.6
1	I	14	ASP	3.5
1	L	38	GLN	3.0
1	I	383	ALA	2.9
1	I	210	LEU	2.8
1	I	7	ILE	2.8
1	I	179	ALA	2.5
1	L	360	ASP	2.5
1	I	16	PRO	2.5
1	L	401	THR	2.5
1	L	25	SER	2.4
1	I	43	ALA	2.4
1	L	402	PHE	2.3
1	I	6	ASP	2.2
1	I	146	LEU	2.2
1	I	90	THR	2.2
1	I	178	ASN	2.2
1	L	36	SER	2.2
1	I	131	TYR	2.1
1	L	389	VAL	2.1
1	L	235	ARG	2.0

6.2 Non-standard residues in protein, DNA, RNA chains ⓘ

There are no non-standard protein/DNA/RNA residues in this entry.

6.3 Carbohydrates ⓘ

In the following table, the Atoms column lists the number of modelled atoms in the group and the number defined in the chemical component dictionary. LLDF column lists the quality of electron density of the group with respect to its neighbouring residues in protein, DNA or RNA chains. The B-factors column lists the minimum, median, 95th percentile and maximum values of B factors of atoms in the group. The column labelled 'Q< 0.9' lists the number of atoms with occupancy less than 0.9.

Mol	Type	Chain	Res	Atoms	RSR	LLDF	B-factors(Å ²)	Q<0.9
3	NAG	L	842	14/15	0.39	9.50	84,88,90,91	0
3	NAG	I	842	14/15	0.48	3.80	98,101,102,103	0
3	NAG	L	861	14/15	0.21	3.72	58,61,66,71	0
3	NAG	L	862	14/15	0.37	2.37	76,78,80,81	0
3	NAG	I	841	14/15	0.24	1.25	82,86,91,94	0
3	NAG	L	841	14/15	0.20	0.57	60,66,69,77	0

6.4 Ligands ⓘ

In the following table, the Atoms column lists the number of modelled atoms in the group and the number defined in the chemical component dictionary. LLDF column lists the quality of electron density of the group with respect to its neighbouring residues in protein, DNA or RNA chains. The B-factors column lists the minimum, median, 95th percentile and maximum values of B factors of atoms in the group. The column labelled 'Q< 0.9' lists the number of atoms with occupancy less than 0.9.

Mol	Type	Chain	Res	Atoms	RSR	LLDF	B-factors(Å ²)	Q<0.9
2	NAG	I	801	14/15	0.43	54.52	77,79,81,81	0
2	NAG	L	801	14/15	0.23	1.61	66,68,70,71	0
4	NTP	L	901	100/100	0.14	-0.67	45,55,70,72	0
4	NTP	I	901	100/100	0.15	-0.70	53,67,79,84	0

6.5 Other polymers ⓘ

There are no such residues in this entry.