



Full wwPDB X-ray Structure Validation Report

Feb 27, 2014 – 12:08 PM GMT

PDB ID : 1NQX
Title : Crystal Structure of Lumazine Synthase from Aquifex aeolicus in Complex with Inhibitor: 3-(7-hydroxy-8-ribityllumazine-6-yl)propionicacid
Authors : Zhang, X.; Meining, W.; Cushman, M.; Haase, I.; Fischer, M.; Bacher, A.; Ladenstein, R.
Deposited on : 2003-01-23
Resolution : 1.82 Å(reported)

This is a full wwPDB validation report for a publicly released PDB entry.
We welcome your comments at validation@mail.wwpdb.org
A user guide is available at <http://wwpdb.org/ValidationPDFNotes.html>

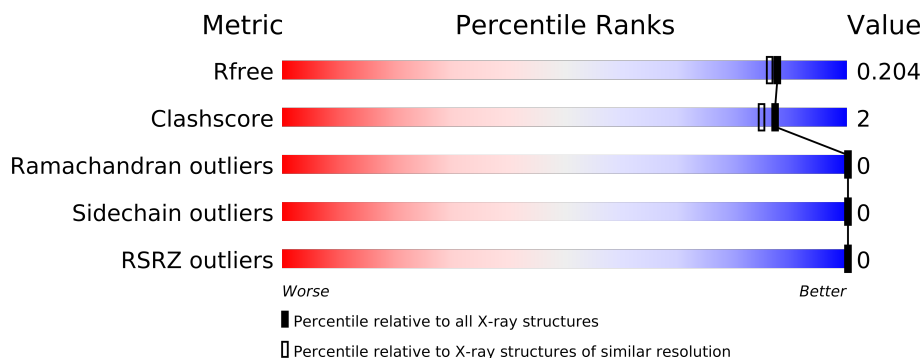
The following versions of software and data (see [references](#)) were used in the production of this report:

MolProbity : 4.02b-467
Mogul : 1.15 2013
Xtriage (Phenix) : dev-1323
EDS : stable22639
Percentile statistics : 21963
Refmac : 5.8.0049
CCP4 : 6.3.0 (Settle)
Ideal geometry (proteins) : Engh & Huber (2001)
Ideal geometry (DNA, RNA) : Parkinson et. al. (1996)
Validation Pipeline (wwPDB-VP) : stable22683

1 Overall quality at a glance

The reported resolution of this entry is 1.82 Å.

Percentile scores (ranging between 0-100) for global validation metrics of the entry are shown in the following graphic. The table shows the number of entries on which the scores are based.



Metric	Whole archive (#Entries)	Similar resolution (#Entries, resolution range(Å))
R_{free}	66092	4101 (1.84-1.80)
Clashscore	79885	5140 (1.84-1.80)
Ramachandran outliers	78287	5077 (1.84-1.80)
Sidechain outliers	78261	5077 (1.84-1.80)
RSRZ outliers	66119	4103 (1.84-1.80)

The table below summarises the geometric issues observed across the polymeric chains and their fit to the electron density. The red, orange, yellow and green segments on the lower bar indicate the fraction of residues that contain outliers for ≥ 3 , 2, 1 and 0 types of geometric quality criteria. The upper red bar (where present) indicates the fraction of residues that have poor fit to the electron density.

Mol	Chain	Length	Quality of chain
1	A	154	<div><div></div><div></div></div>
1	B	154	<div><div></div><div></div></div>
1	C	154	<div><div></div><div></div></div>
1	D	154	<div><div></div><div></div></div>
1	E	154	<div><div></div><div></div></div>

The following table lists non-polymeric compounds that are outliers for geometric or electron-density-fit criteria:

Mol	Type	Chain	Res	Geometry	Electron density
3	RLP	A	1201	-	X
3	RLP	B	2201	-	X
3	RLP	C	3201	-	X

Continued on next page...

Continued from previous page...

Mol	Type	Chain	Res	Geometry	Electron density
3	RLP	D	4201	-	X
3	RLP	E	5201	-	X

2 Entry composition i

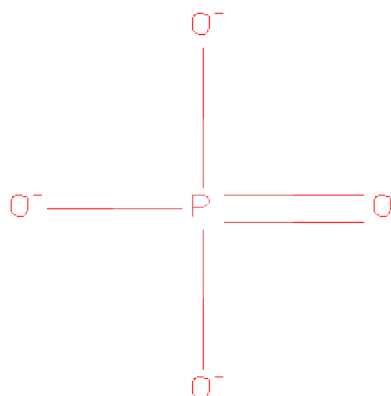
There are 4 unique types of molecules in this entry. The entry contains 6655 atoms, of which 0 are hydrogen and 0 are deuterium.

In the tables below, the ZeroOcc column contains the number of atoms modelled with zero occupancy, the AltConf column contains the number of residues with at least one atom in alternate conformation and the Trace column contains the number of residues modelled with at most 2 atoms.

- Molecule 1 is a protein called 6,7-dimethyl-8-ribityllumazinesynthase.

Mol	Chain	Residues	Atoms					ZeroOcc	AltConf	Trace
1	A	154	Total	C	N	O	S	3	1	0
			1182	749	211	219	3			
1	B	154	Total	C	N	O	S	3	1	0
			1182	749	211	219	3			
1	C	154	Total	C	N	O	S	3	1	0
			1182	749	211	219	3			
1	D	154	Total	C	N	O	S	3	1	0
			1182	749	211	219	3			
1	E	154	Total	C	N	O	S	3	1	0
			1182	749	211	219	3			

- Molecule 2 is PHOSPHATE ION (three-letter code: PO4) (formula: O₄P).



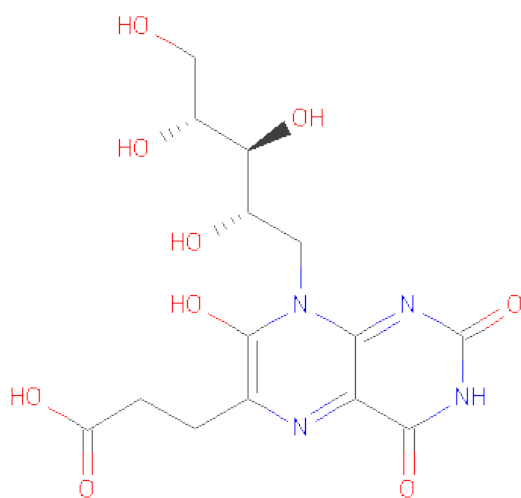
Mol	Chain	Residues	Atoms			ZeroOcc	AltConf
2	A	1	Total	O	P	0	0
			5	4	1		

Continued on next page...

Continued from previous page...

Mol	Chain	Residues	Atoms			ZeroOcc	AltConf
2	B	1	Total	O	P	0	0
			5	4	1		
2	C	1	Total	O	P	0	0
			5	4	1		
2	D	1	Total	O	P	0	0
			5	4	1		
2	E	1	Total	O	P	0	0
			5	4	1		

- Molecule 3 is 3-(7-HYDROXY-8-RIBITYLLUMAZINE-6-YL)PROPIONIC ACID (three-letter code: RLP) (formula: C₁₄H₁₈N₄O₉).



Mol	Chain	Residues	Atoms				ZeroOcc	AltConf
3	A	1	Total	C	N	O	0	0
			27	14	4	9		
3	B	1	Total	C	N	O	0	0
			27	14	4	9		
3	C	1	Total	C	N	O	0	0
			27	14	4	9		
3	D	1	Total	C	N	O	0	0
			27	14	4	9		
3	E	1	Total	C	N	O	0	0
			27	14	4	9		

- Molecule 4 is water.

Mol	Chain	Residues	Atoms		ZeroOcc	AltConf
4	A	118	Total 118	O 118	0	0
4	B	118	Total 118	O 118	0	0
4	C	115	Total 115	O 115	0	0
4	D	118	Total 118	O 118	0	0
4	E	116	Total 116	O 116	0	0

3 Residue-property plots

These plots are drawn for all protein, RNA and DNA chains in the entry. The first graphic for a chain summarises the proportions of errors displayed in the second graphic. The second graphic shows the sequence view annotated by issues in geometry and electron density. Residues are color-coded according to the number of geometric quality criteria for which they contain at least one outlier: green = 0, yellow = 1, orange = 2 and red = 3 or more. A red dot above a residue indicates a poor fit to the electron density ($RSRZ > 2$). Stretches of 2 or more consecutive residues without any outlier are shown as a green connector. Residues present in the sample, but not in the model, are shown in grey.

- Molecule 1: 6,7-dimethyl-8-ribityllumazinesynthase

Chain A: 



- Molecule 1: 6,7-dimethyl-8-ribityllumazinesynthase

Chain B: 



- Molecule 1: 6,7-dimethyl-8-ribityllumazinesynthase

Chain C: 



- Molecule 1: 6,7-dimethyl-8-ribityllumazinesynthase

Chain D: 



- Molecule 1: 6,7-dimethyl-8-ribityllumazinesynthase

Chain E: 



4 Data and refinement statistics

Property	Value	Source
Space group	I 2 3	Depositor
Cell constants a, b, c, α , β , γ	180.11Å 180.11Å 180.11Å 90.00° 90.00° 90.00°	Depositor
Resolution (Å)	48.14 – 1.82 48.14 – 1.82	Depositor EDS
% Data completeness (in resolution range)	(Not available) (48.14-1.82) 98.3 (48.14-1.82)	Depositor EDS
R_{merge}	(Not available)	Depositor
R_{sym}	(Not available)	Depositor
$\langle I/\sigma(I) \rangle$ ¹	3.65 (at 1.82Å)	Xtriage
Refinement program	REFMAC 5	Depositor
R, R_{free}	0.174 , 0.189 0.189 , 0.204	Depositor DCC
R_{free} test set	4259 reflections (5.27%)	DCC
Wilson B-factor (Å ²)	18.5	Xtriage
Anisotropy	0.000	Xtriage
Bulk solvent k_{sol} (e/Å ³), B_{sol} (Å ²)	0.37 , 37.2	EDS
Estimated twinning fraction	0.005 for -l,-k,-h	Xtriage
L-test for twinning	$\langle L \rangle = 0.53$, $\langle L^2 \rangle = 0.37$	Xtriage
Outliers	4 of 85047 reflections (0.005%)	Xtriage
F_o, F_c correlation	0.96	EDS
Total number of atoms	6655	wwPDB-VP
Average B, all atoms (Å ²)	21.0	wwPDB-VP

Xtriage's analysis on translational NCS is as follows: *The largest off-origin peak in the Patterson function is 2.92% of the height of the origin peak. No significant pseudotranslation is detected.*

¹Intensities estimated from amplitudes.

5 Model quality

5.1 Standard geometry

Bond lengths and bond angles in the following residue types are not validated in this section: PO4, RLP

The Z score for a bond length (or angle) is the number of standard deviations the observed value is removed from the expected value. A bond length (or angle) with $|Z| > 5$ is considered an outlier worth inspection. RMSZ is the root-mean-square of all Z scores of the bond lengths (or angles).

Mol	Chain	Bond lengths		Bond angles	
		RMSZ	# Z >5	RMSZ	# Z >5
1	A	0.70	0/1204	0.80	3/1624 (0.2%)
1	B	0.67	0/1204	0.81	2/1624 (0.1%)
1	C	0.71	0/1204	0.79	3/1624 (0.2%)
1	D	0.68	0/1204	0.77	1/1624 (0.1%)
1	E	0.69	0/1204	0.78	1/1624 (0.1%)
All	All	0.69	0/6020	0.79	10/8120 (0.1%)

There are no bond length outliers.

All (10) bond angle outliers are listed below:

Mol	Chain	Res	Type	Atoms	Z	Observed(°)	Ideal(°)
1	A	90	ASP	CB-CG-OD2	6.85	124.47	118.30
1	C	47	ASP	CB-CG-OD2	6.31	123.98	118.30
1	B	90	ASP	CB-CG-OD2	6.08	123.77	118.30
1	A	29	ARG	NE-CZ-NH1	5.93	123.27	120.30
1	D	90	ASP	CB-CG-OD2	5.56	123.30	118.30
1	B	73	ASP	CB-CG-OD2	5.34	123.10	118.30
1	A	71	ASP	CB-CG-OD2	5.26	123.03	118.30
1	C	40	ARG	NE-CZ-NH2	-5.25	117.68	120.30
1	E	73	ASP	CB-CG-OD2	5.16	122.95	118.30
1	C	90	ASP	CB-CG-OD2	5.12	122.91	118.30

There are no chirality outliers.

There are no planarity outliers.

5.2 Close contacts

In the following table, the Non-H and H(model) columns list the number of non-hydrogen atoms and hydrogen atoms in the chain respectively. The H(added) column lists the number of hydrogens

added by MolProbity. The Clashes column lists the number of clashes within the asymmetric unit, and the number in parentheses is this value normalized per 1000 atoms of the molecule in the chain. The Symm-Clashes column gives symmetry related clashes, in the same way as for the Clashes column.

Mol	Chain	Non-H	H(model)	H(added)	Clashes	Symm-Clashes
1	A	1182	0	1212	6	0
1	B	1182	0	1212	6	0
1	C	1182	0	1212	5	0
1	D	1182	0	1212	6	0
1	E	1182	0	1212	7	0
2	A	5	0	0	0	0
2	B	5	0	0	0	0
2	C	5	0	0	0	0
2	D	5	0	0	0	0
2	E	5	0	0	0	0
3	A	27	0	16	2	0
3	B	27	0	16	2	0
3	C	27	0	16	2	0
3	D	27	0	16	2	0
3	E	27	0	16	2	0
4	A	118	0	0	1	1
4	B	118	0	0	2	2
4	C	115	0	0	1	3
4	D	118	0	0	2	1
4	E	116	0	0	2	3
All	All	6655	0	6140	30	5

Clashscore is defined as the number of clashes calculated for the entry per 1000 atoms (including hydrogens) of the entry. The overall clashscore for this entry is 2.

All (30) close contacts within the same asymmetric unit are listed below.

Atom-1	Atom-2	Distance(Å)	Clash(Å)
1:E:7[A]:LYS:HG2	4:E:5339:HOH:O	1.95	0.65
1:D:7[A]:LYS:HG2	4:D:4339:HOH:O	1.96	0.65
1:D:86:THR:HB	1:D:87:PRO:HD2	1.81	0.60
1:A:86:THR:HB	1:A:87:PRO:HD2	1.82	0.60
1:D:137:TRP:HZ3	4:D:4337:HOH:O	1.86	0.58
1:B:7[A]:LYS:HG2	4:B:2339:HOH:O	2.04	0.58
1:E:86:THR:HB	1:E:87:PRO:HD2	1.86	0.58
1:A:7[A]:LYS:HG2	4:A:1339:HOH:O	2.03	0.57
1:C:86:THR:HB	1:C:87:PRO:HD2	1.87	0.56
3:D:4201:RLP:C18	3:D:4201:RLP:O8	2.54	0.56
1:B:86:THR:HB	1:B:87:PRO:HD2	1.88	0.54

Continued on next page...

Continued from previous page...

Atom-1	Atom-2	Distance(Å)	Clash(Å)
1:A:102:ASN:HD21	1:B:98:LYS:HE3	1.74	0.53
3:E:5201:RLP:O8	3:E:5201:RLP:C18	2.58	0.51
1:D:102:ASN:HD21	1:E:98:LYS:HE3	1.76	0.51
1:B:102:ASN:HD21	1:C:98:LYS:HE3	1.79	0.48
3:B:2201:RLP:O8	3:B:2201:RLP:C18	2.61	0.47
3:A:1201:RLP:O8	3:A:1201:RLP:C18	2.62	0.47
1:A:98:LYS:HE3	1:E:102:ASN:HD21	1.80	0.46
1:B:137:TRP:HZ3	4:B:2337:HOH:O	1.98	0.46
3:C:3201:RLP:O8	3:C:3201:RLP:C18	2.63	0.46
1:A:138:GLU:OE1	3:B:2201:RLP:O18	2.36	0.42
1:E:81:LEU:HD23	3:E:5201:RLP:C4	2.50	0.42
1:C:81:LEU:HD23	3:C:3201:RLP:C4	2.50	0.42
1:C:7[A]:LYS:HG2	4:C:3339:HOH:O	2.19	0.42
1:D:81:LEU:HD23	3:D:4201:RLP:C4	2.51	0.41
1:E:102:ASN:ND2	4:E:5366:HOH:O	2.53	0.41
1:E:21:ARG:O	1:E:24:HIS:HB3	2.20	0.41
1:B:21:ARG:O	1:B:24:HIS:HB3	2.21	0.41
1:C:102:ASN:HD21	1:D:98:LYS:HE3	1.86	0.40
1:A:81:LEU:HD23	3:A:1201:RLP:C4	2.51	0.40

All (5) symmetry-related close contacts are listed below. The label for Atom-2 includes the symmetry operator and encoded unit-cell translations to be applied.

Atom-1	Atom-2	Distance(Å)	Clash(Å)
4:A:1337:HOH:O	4:E:5337:HOH:O[12_665]	0.08	2.12
4:C:3337:HOH:O	4:D:4337:HOH:O[9_645]	0.18	2.02
4:C:3334:HOH:O	4:E:5334:HOH:O[9_645]	0.73	1.47
4:B:2334:HOH:O	4:E:5334:HOH:O[12_665]	0.93	1.27
4:B:2334:HOH:O	4:C:3334:HOH:O[2_755]	0.94	1.26

5.3 Torsion angles

5.3.1 Protein backbone ⓘ

In the following table, the Percentiles column shows the percent Ramachandran outliers of the chain as a percentile score with respect to all X-ray entries followed by that with respect to entries of similar resolution. The Analysed column shows the number of residues for which the backbone conformation was analysed, and the total number of residues.

Mol	Chain	Analysed	Favoured	Allowed	Outliers	Percentiles
1	A	153/154 (99%)	149 (97%)	4 (3%)	0	100 100

Continued on next page...

Continued from previous page...

Mol	Chain	Analysed	Favoured	Allowed	Outliers	Percentiles	
1	B	153/154 (99%)	149 (97%)	4 (3%)	0	100	100
1	C	153/154 (99%)	150 (98%)	3 (2%)	0	100	100
1	D	153/154 (99%)	151 (99%)	2 (1%)	0	100	100
1	E	153/154 (99%)	150 (98%)	3 (2%)	0	100	100
All	All	765/770 (99%)	749 (98%)	16 (2%)	0	100	100

There are no Ramachandran outliers to report.

5.3.2 Protein sidechains ⓘ

In the following table, the Percentiles column shows the percent sidechain outliers of the chain as a percentile score with respect to all X-ray entries followed by that with respect to entries of similar resolution. The Analysed column shows the number of residues for which the sidechain conformation was analysed, and the total number of residues.

Mol	Chain	Analysed	Rotameric	Outliers	Percentiles	
1	A	121/120 (101%)	121 (100%)	0	100	100
1	B	121/120 (101%)	121 (100%)	0	100	100
1	C	121/120 (101%)	121 (100%)	0	100	100
1	D	121/120 (101%)	121 (100%)	0	100	100
1	E	121/120 (101%)	121 (100%)	0	100	100
All	All	605/600 (101%)	605 (100%)	0	100	100

There are no protein residues with a non-rotameric sidechain to report.

Some sidechains can be flipped to improve hydrogen bonding and reduce clashes. All (10) such sidechains are listed below:

Mol	Chain	Res	Type
1	A	24	HIS
1	A	102	ASN
1	B	24	HIS
1	B	102	ASN
1	C	24	HIS
1	C	102	ASN
1	D	24	HIS
1	D	102	ASN
1	E	24	HIS
1	E	102	ASN

5.3.3 RNA ⓘ

There are no RNA chains in this entry.

5.4 Non-standard residues in protein, DNA, RNA chains ⓘ

There are no non-standard protein/DNA/RNA residues in this entry.

5.5 Carbohydrates ⓘ

There are no carbohydrates in this entry.

5.6 Ligand geometry ⓘ

10 ligands are modelled in this entry.

In the following table, the Counts columns list the number of bonds (or angles) for which Mogul statistics could be retrieved, the number of bonds (or angles) that are observed in the model and the number of bonds (or angles) that are defined in the chemical component dictionary. The Link column lists molecule types, if any, to which the group is linked. The Z score for a bond length (or angle) is the number of standard deviations the observed value is removed from the expected value. A bond length (or angle) with $|Z| > 2$ is considered an outlier worth inspection. RMSZ is the root-mean-square of all Z scores of the bond lengths (or angles).

Mol	Type	Chain	Res	Link	Bond lengths			Bond angles		
					Counts	RMSZ	# $ Z > 2$	Counts	RMSZ	# $ Z > 2$
3	RLP	A	1201	-	28,28,28	1.47	4 (14%)	34,40,40	2.10	10 (29%)
2	PO4	A	1251	-	4,4,4	0.63	0	6,6,6	0.34	0
3	RLP	B	2201	-	28,28,28	1.52	5 (17%)	34,40,40	2.10	9 (26%)
2	PO4	B	2251	-	4,4,4	0.73	0	6,6,6	0.33	0
3	RLP	C	3201	-	28,28,28	1.65	5 (17%)	34,40,40	2.10	9 (26%)
2	PO4	C	3251	-	4,4,4	0.62	0	6,6,6	0.32	0
3	RLP	D	4201	-	28,28,28	1.61	4 (14%)	34,40,40	2.11	8 (23%)
2	PO4	D	4251	-	4,4,4	0.67	0	6,6,6	0.35	0
3	RLP	E	5201	-	28,28,28	1.62	4 (14%)	34,40,40	2.14	10 (29%)
2	PO4	E	5251	-	4,4,4	0.72	0	6,6,6	0.31	0

In the following table, the Chirals column lists the number of chiral outliers, the number of chiral centers analysed, the number of these observed in the model and the number defined in the chemical component dictionary. Similar counts are reported in the Torsion and Rings columns. '-' means no outliers of that kind were identified.

Mol	Type	Chain	Res	Link	Chirals	Torsions	Rings
3	RLP	A	1201	-	-	0/19/19/19	0/0/2/2
2	PO4	A	1251	-	-	0/0/0/0	0/0/0/0
3	RLP	B	2201	-	-	0/19/19/19	0/0/2/2
2	PO4	B	2251	-	-	0/0/0/0	0/0/0/0
3	RLP	C	3201	-	-	0/19/19/19	0/0/2/2
2	PO4	C	3251	-	-	0/0/0/0	0/0/0/0
3	RLP	D	4201	-	-	0/19/19/19	0/0/2/2
2	PO4	D	4251	-	-	0/0/0/0	0/0/0/0
3	RLP	E	5201	-	-	0/19/19/19	0/0/2/2
2	PO4	E	5251	-	-	0/0/0/0	0/0/0/0

All (22) bond length outliers are listed below:

Mol	Chain	Res	Type	Atoms	Z	Observed(Å)	Ideal(Å)
3	D	4201	RLP	C5-C10	4.48	1.48	1.40
3	D	4201	RLP	C4-C5	4.30	1.48	1.41
3	B	2201	RLP	C5-C10	4.27	1.48	1.40
3	C	3201	RLP	C11-C12	-4.21	1.47	1.51
3	C	3201	RLP	C5-C10	4.10	1.48	1.40
3	E	5201	RLP	C4-C5	3.90	1.47	1.41
3	A	1201	RLP	C4-C5	3.84	1.47	1.41
3	E	5201	RLP	C5-C10	3.79	1.47	1.40
3	A	1201	RLP	C5-C10	3.77	1.47	1.40
3	C	3201	RLP	C4-C5	3.42	1.46	1.41
3	E	5201	RLP	C7-N6	3.39	1.36	1.32
3	E	5201	RLP	C11-C12	-3.31	1.48	1.51
3	B	2201	RLP	C7-N6	3.21	1.36	1.32
3	B	2201	RLP	C11-C12	-2.97	1.48	1.51
3	B	2201	RLP	C4-C5	2.82	1.45	1.41
3	A	1201	RLP	C7-N6	2.62	1.35	1.32
3	C	3201	RLP	C7-N6	2.60	1.35	1.32
3	D	4201	RLP	O4-C4	2.58	1.29	1.24
3	C	3201	RLP	C11-N9	-2.51	1.45	1.48
3	D	4201	RLP	C11-C12	-2.35	1.49	1.51
3	A	1201	RLP	C11-C12	-2.35	1.49	1.51
3	B	2201	RLP	C10-N1	2.05	1.39	1.35

All (46) bond angle outliers are listed below:

Mol	Chain	Res	Type	Atoms	Z	Observed(°)	Ideal(°)
3	B	2201	RLP	C5-C10-N9	-6.80	117.12	120.51
3	C	3201	RLP	C5-C10-N9	-6.71	117.16	120.51
3	A	1201	RLP	C12-C11-N9	6.35	120.88	112.45

Continued on next page...

Continued from previous page...

Mol	Chain	Res	Type	Atoms	Z	Observed(°)	Ideal(°)
3	D	4201	RLP	C12-C11-N9	6.03	120.45	112.45
3	E	5201	RLP	C12-C11-N9	5.91	120.29	112.45
3	D	4201	RLP	C5-C10-N9	-5.85	117.59	120.51
3	C	3201	RLP	C12-C11-N9	5.83	120.18	112.45
3	E	5201	RLP	C5-C10-N9	-5.63	117.70	120.51
3	B	2201	RLP	C12-C11-N9	5.42	119.64	112.45
3	A	1201	RLP	C5-C10-N9	-5.12	117.95	120.51
3	E	5201	RLP	C2-N1-C10	4.95	119.96	114.98
3	A	1201	RLP	C2-N1-C10	4.46	119.47	114.98
3	C	3201	RLP	C2-N1-C10	3.97	118.98	114.98
3	B	2201	RLP	C2-N1-C10	3.84	118.85	114.98
3	D	4201	RLP	C7-N6-C5	3.64	121.39	117.23
3	E	5201	RLP	C5-C10-N1	-3.60	119.13	122.73
3	D	4201	RLP	C2-N1-C10	3.54	118.54	114.98
3	A	1201	RLP	O12-C12-C11	-3.02	102.22	109.71
3	A	1201	RLP	C5-C10-N1	-3.01	119.72	122.73
3	D	4201	RLP	C5-C10-N1	-2.94	119.80	122.73
3	B	2201	RLP	C5-C10-N1	-2.84	119.89	122.73
3	A	1201	RLP	C7-N6-C5	2.80	120.42	117.23
3	E	5201	RLP	N1-C10-N9	2.71	123.10	115.97
3	B	2201	RLP	C17-C16-C7	2.69	115.15	112.49
3	B	2201	RLP	N1-C10-N9	2.67	122.98	115.97
3	C	3201	RLP	C17-C16-C7	2.65	115.11	112.49
3	C	3201	RLP	C5-C10-N1	-2.57	120.16	122.73
3	E	5201	RLP	O12-C12-C11	-2.53	103.42	109.71
3	C	3201	RLP	N1-C10-N9	2.49	122.51	115.97
3	D	4201	RLP	N1-C10-N9	2.47	122.46	115.97
3	D	4201	RLP	O12-C12-C11	-2.38	103.79	109.71
3	B	2201	RLP	C10-C5-N6	2.37	123.34	120.45
3	A	1201	RLP	N1-C10-N9	2.36	122.16	115.97
3	E	5201	RLP	O19-C18-C17	2.34	122.50	114.22
3	A	1201	RLP	O19-C18-C17	2.32	122.41	114.22
3	B	2201	RLP	O19-C18-C17	2.29	122.32	114.22
3	E	5201	RLP	O18-C18-C17	-2.27	115.22	123.03
3	C	3201	RLP	O12-C12-C11	-2.16	104.35	109.71
3	C	3201	RLP	O19-C18-C17	2.15	121.83	114.22
3	E	5201	RLP	C7-N6-C5	2.12	119.65	117.23
3	B	2201	RLP	O18-C18-C17	-2.11	115.77	123.03
3	E	5201	RLP	C17-C16-C7	2.11	114.57	112.49
3	C	3201	RLP	C7-N6-C5	2.10	119.63	117.23
3	A	1201	RLP	C17-C16-C7	2.07	114.54	112.49
3	A	1201	RLP	O18-C18-C17	-2.03	116.06	123.03

Continued on next page...

Continued from previous page...

Mol	Chain	Res	Type	Atoms	Z	Observed(°)	Ideal(°)
3	D	4201	RLP	O12-C12-C13	2.01	114.05	109.05

There are no chirality outliers.

There are no torsion outliers.

There are no ring outliers.

5.7 Other polymers ⓘ

There are no such residues in this entry.

5.8 Polymer linkage issues

There are no chain breaks in this entry.

6 Fit of model and data ⓘ

6.1 Protein, DNA and RNA chains ⓘ

In the following table, the column labelled ‘#RSRZ> 2’ contains the number (and percentage) of RSRZ outliers, followed by percent RSRZ outliers for the chain as percentile scores relative to all X-ray entries and entries of similar resolution. The OWAB column contains the minimum, median, 95th percentile and maximum values of the occupancy-weighted average B-factor per residue. The column labelled ‘Q< 0.9’ lists the number of (and percentage) of residues with an average occupancy less than 0.9.

Mol	Chain	Analysed	<RSRZ>	#RSRZ>2	OWAB(Å ²)	Q<0.9
1	A	154/154 (100%)	-0.47	0 100 100	15, 18, 29, 39	1 (0%)
1	B	154/154 (100%)	-0.38	0 100 100	15, 18, 29, 39	1 (0%)
1	C	154/154 (100%)	-0.41	0 100 100	14, 18, 29, 39	1 (0%)
1	D	154/154 (100%)	-0.47	0 100 100	15, 18, 29, 39	1 (0%)
1	E	154/154 (100%)	-0.41	0 100 100	14, 18, 29, 39	1 (0%)
All	All	770/770 (100%)	-0.43	0 100 100	14, 18, 30, 39	5 (0%)

There are no RSRZ outliers to report.

6.2 Non-standard residues in protein, DNA, RNA chains ⓘ

There are no non-standard protein/DNA/RNA residues in this entry.

6.3 Carbohydrates ⓘ

There are no carbohydrates in this entry.

6.4 Ligands ⓘ

In the following table, the Atoms column lists the number of modelled atoms in the group and the number defined in the chemical component dictionary. LLDF column lists the quality of electron density of the group with respect to its neighbouring residues in protein, DNA or RNA chains. The B-factors column lists the minimum, median, 95th percentile and maximum values of B factors of atoms in the group. The column labelled ‘Q< 0.9’ lists the number of atoms with occupancy less than 0.9.

Mol	Type	Chain	Res	Atoms	RSR	LLDF	B-factors(Å ²)	Q<0.9
3	RLP	B	2201	27/27	0.14	2.69	16,21,31,33	0

Continued on next page...

Continued from previous page...

Mol	Type	Chain	Res	Atoms	RSR	LLDF	B-factors(\AA^2)	Q<0.9
3	RLP	A	1201	27/27	0.13	2.65	16,22,31,34	0
3	RLP	C	3201	27/27	0.13	2.57	16,22,31,34	0
3	RLP	D	4201	27/27	0.14	2.39	17,22,30,34	0
3	RLP	E	5201	27/27	0.13	2.31	16,22,31,34	0
2	PO4	D	4251	5/5	0.09	0.79	21,22,24,24	0
2	PO4	C	3251	5/5	0.07	-0.53	21,21,24,24	0
2	PO4	B	2251	5/5	0.06	-0.63	21,21,24,24	0
2	PO4	E	5251	5/5	0.06	-0.86	21,21,24,24	0
2	PO4	A	1251	5/5	0.06	-1.20	21,21,24,24	0

6.5 Other polymers ⓘ

There are no such residues in this entry.