



# Full wwPDB X-ray Structure Validation Report

Nov 11, 2014 – 04:57 PM EST

PDB ID : 4NQC  
Title : Crystal structure of TCR-MR1 ternary complex and covalently bound 5-(2-oxopropylideneamino)-6-D-ribitylaminouracil  
Authors : Birkinshaw, R.W.; Rossjohn, J.  
Deposited on : 2013-11-25  
Resolution : 2.50 Å(reported)

This is a full wwPDB validation report for a publicly released PDB entry.  
We welcome your comments at [validation@mail.wwpdb.org](mailto:validation@mail.wwpdb.org)  
A user guide is available at <http://wwpdb.org/ValidationPDFNotes.html>

---

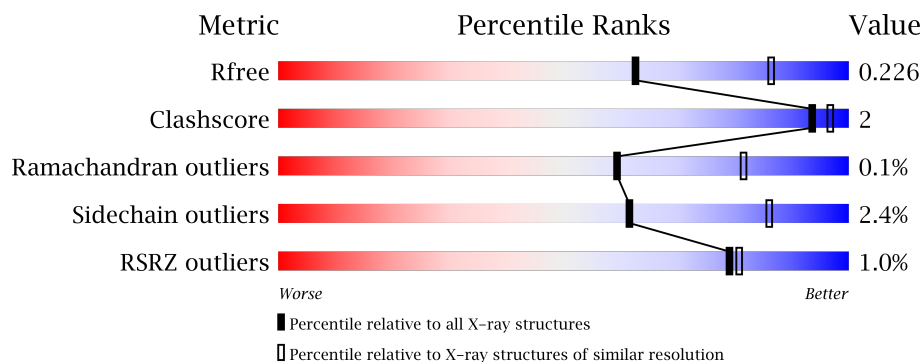
The following versions of software and data (see [references](#)) were used in the production of this report:

MolProbity : 4.02b-467  
Mogul : 1.16 November 2013  
Xtriage (Phenix) : dev-1439  
EDS : stable24103  
Percentile statistics : 21963  
Refmac : 5.8.0049  
CCP4 : 6.1.3  
Ideal geometry (proteins) : Engh & Huber (2001)  
Ideal geometry (DNA, RNA) : Parkinson et. al. (1996)  
Validation Pipeline (wwPDB-VP) : stable24103

# 1 Overall quality at a glance

The reported resolution of this entry is 2.50 Å.

Percentile scores (ranging between 0-100) for global validation metrics of the entry are shown in the following graphic. The table shows the number of entries on which the scores are based.



Metric	Whole archive (#Entries)	Similar resolution (#Entries, resolution range(Å))
$R_{free}$	66092	2784 (2.50-2.50)
Clashscore	79885	3562 (2.50-2.50)
Ramachandran outliers	78287	3480 (2.50-2.50)
Sidechain outliers	78261	3482 (2.50-2.50)
RSRZ outliers	66119	2785 (2.50-2.50)

The table below summarises the geometric issues observed across the polymeric chains and their fit to the electron density. The red, orange, yellow and green segments on the lower bar indicate the fraction of residues that contain outliers for  $\geq 3$ , 2, 1 and 0 types of geometric quality criteria. The upper red bar (where present) indicates the fraction of residues that have poor fit to the electron density.

Mol	Chain	Length	Quality of chain
1	A	271	
1	C	271	
2	B	99	
2	F	99	
3	D	203	
3	G	203	
4	E	245	
4	H	245	

## 2 Entry composition

There are 7 unique types of molecules in this entry. The entry contains 13506 atoms, of which 0 are hydrogen and 0 are deuterium.

In the tables below, the ZeroOcc column contains the number of atoms modelled with zero occupancy, the AltConf column contains the number of residues with at least one atom in alternate conformation and the Trace column contains the number of residues modelled with at most 2 atoms.

- Molecule 1 is a protein called Major histocompatibility complex class I-related gene protein.

Mol	Chain	Residues	Atoms					ZeroOcc	AltConf	Trace
1	A	255	Total	C	N	O	S	0	1	0
			2098	1342	367	378	11			
1	C	263	Total	C	N	O	S	0	0	0
			2149	1377	370	391	11			

There are 4 discrepancies between the modelled and reference sequences:

Chain	Residue	Modelled	Actual	Comment	Reference
A	0	MET	-	EXPRESSION TAG	UNP Q95460
A	261	SER	CYS	ENGINEERED MUTATION	UNP Q95460
C	0	MET	-	EXPRESSION TAG	UNP Q95460
C	261	SER	CYS	ENGINEERED MUTATION	UNP Q95460

- Molecule 2 is a protein called Beta-2-microglobulin.

Mol	Chain	Residues	Atoms					ZeroOcc	AltConf	Trace
2	B	96	Total	C	N	O	S	0	0	0
			757	487	129	139	2			
2	F	97	Total	C	N	O	S	0	0	0
			774	497	132	143	2			

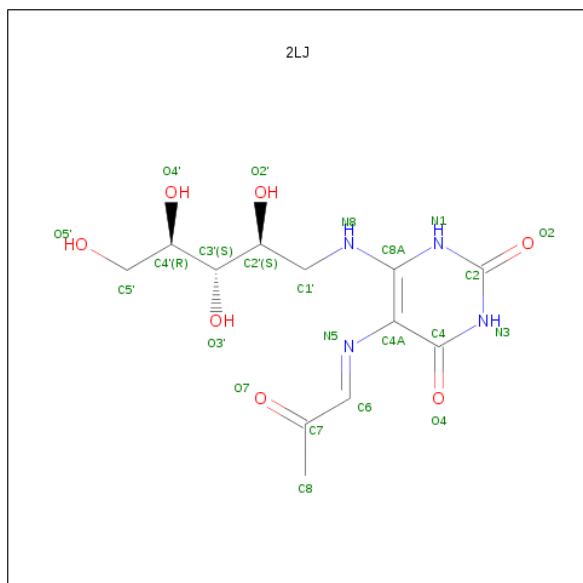
- Molecule 3 is a protein called TCR alpha chain.

Mol	Chain	Residues	Atoms					ZeroOcc	AltConf	Trace
3	D	185	Total	C	N	O	S	0	0	0
			1376	888	220	260	8			
3	G	198	Total	C	N	O	S	0	0	0
			1516	960	242	305	9			

- Molecule 4 is a protein called TCR beta chain.

Mol	Chain	Residues	Atoms					ZeroOcc	AltConf	Trace
4	E	240	Total	C	N	O	S	0	1	0
			1851	1169	317	356	9			
4	H	243	Total	C	N	O	S	0	2	0
			1900	1195	331	365	9			

- Molecule 5 is 1-DEOXY-1-({2,6-DIOXO-5-[(E)-(2-OXOPROPYLIDENE)AMINO]-1,2,3,6-TETRAHYDROPYRIMIDIN-4-YL}AMINO)-D-RIBITOL (three-letter code: 2LJ) (formula: C<sub>12</sub>H<sub>18</sub>N<sub>4</sub>O<sub>7</sub>).



Mol	Chain	Residues	Atoms				ZeroOcc	AltConf
5	A	1	Total	C	N	O	0	0
			22	12	4	6		
5	C	1	Total	C	N	O	0	0
			22	12	4	6		

- Molecule 6 is SODIUM ION (three-letter code: NA) (formula: Na).

Mol	Chain	Residues	Atoms		ZeroOcc	AltConf
6	H	1	Total	Na	0	0
			1	1		

- Molecule 7 is water.

Mol	Chain	Residues	Atoms		ZeroOcc	AltConf
7	A	174	Total	O	0	0
			174	174		

Continued on next page...

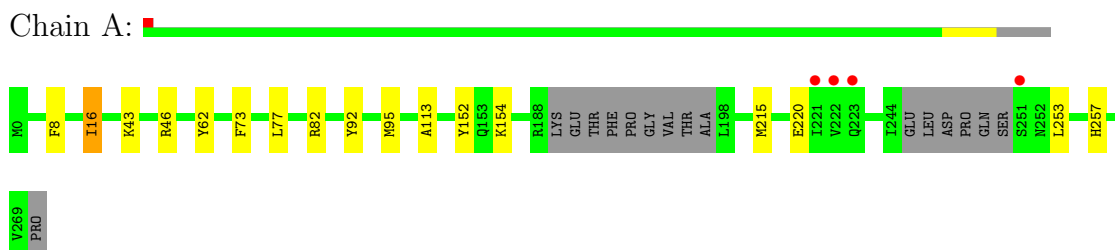
*Continued from previous page...*

Mol	Chain	Residues	Atoms		ZeroOcc	AltConf
7	B	56	Total 56	O 56	0	0
7	C	194	Total 194	O 194	0	0
7	D	87	Total 87	O 87	0	0
7	E	139	Total 139	O 139	0	0
7	F	67	Total 67	O 67	0	0
7	G	143	Total 143	O 143	0	0
7	H	180	Total 180	O 180	0	0

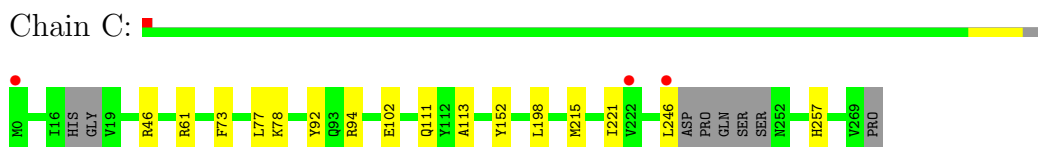
### 3 Residue-property plots

These plots are drawn for all protein, RNA and DNA chains in the entry. The first graphic for a chain summarises the proportions of errors displayed in the second graphic. The second graphic shows the sequence view annotated by issues in geometry and electron density. Residues are color-coded according to the number of geometric quality criteria for which they contain at least one outlier: green = 0, yellow = 1, orange = 2 and red = 3 or more. A red dot above a residue indicates a poor fit to the electron density ( $RSRZ > 2$ ). Stretches of 2 or more consecutive residues without any outlier are shown as a green connector. Residues present in the sample, but not in the model, are shown in grey.

- Molecule 1: Major histocompatibility complex class I-related gene protein



- Molecule 1: Major histocompatibility complex class I-related gene protein



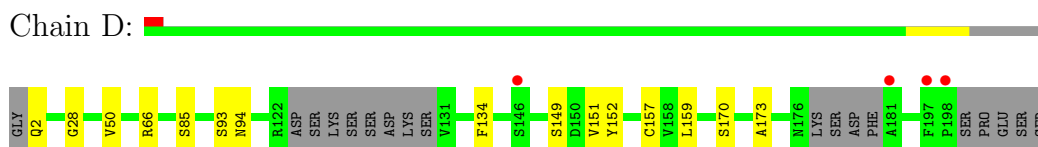
- Molecule 2: Beta-2-microglobulin



- Molecule 2: Beta-2-microglobulin



- Molecule 3: TCR alpha chain



- Molecule 3: TCR alpha chain





• Molecule 4: TCR beta chain

Chain E: 



• Molecule 4: TCR beta chain

Chain H: 



## 4 Data and refinement statistics

Property	Value	Source
Space group	C 1 2 1	Depositor
Cell constants a, b, c, $\alpha$ , $\beta$ , $\gamma$	218.76Å 71.11Å 144.28Å 90.00° 104.87° 90.00°	Depositor
Resolution (Å)	33.42 – 2.50 33.42 – 2.50	Depositor EDS
% Data completeness (in resolution range)	100.0 (33.42-2.50) 100.0 (33.42-2.50)	Depositor EDS
$R_{merge}$	(Not available)	Depositor
$R_{sym}$	(Not available)	Depositor
$\langle I/\sigma(I) \rangle$ <sup>1</sup>	2.26 (at 2.51Å)	Xtriage
Refinement program	BUSTER 2.10.0	Depositor
R, $R_{free}$	0.165 , 0.216 0.172 , 0.226	Depositor DCC
$R_{free}$ test set	3757 reflections (5.31%)	DCC
Wilson B-factor (Å <sup>2</sup> )	24.5	Xtriage
Anisotropy	0.663	Xtriage
Bulk solvent $k_{sol}$ (e/Å <sup>3</sup> ), $B_{sol}$ (Å <sup>2</sup> )	0.33 , 30.6	EDS
Estimated twinning fraction	No twinning to report.	Xtriage
L-test for twinning	$\langle  L  \rangle = 0.48$ , $\langle L^2 \rangle = 0.31$	Xtriage
Outliers	0 of 74553 reflections	Xtriage
$F_o, F_c$ correlation	0.94	EDS
Total number of atoms	13506	wwPDB-VP
Average B, all atoms (Å <sup>2</sup> )	29.0	wwPDB-VP

Xtriage's analysis on translational NCS is as follows: *The largest off-origin peak in the Patterson function is 3.43% of the height of the origin peak. No significant pseudotranslation is detected.*

<sup>1</sup>Intensities estimated from amplitudes.



## 5 Model quality

### 5.1 Standard geometry

Bond lengths and bond angles in the following residue types are not validated in this section: NA, 2LJ

The Z score for a bond length (or angle) is the number of standard deviations the observed value is removed from the expected value. A bond length (or angle) with  $|Z| > 5$  is considered an outlier worth inspection. RMSZ is the root-mean-square of all Z scores of the bond lengths (or angles).

Mol	Chain	Bond lengths		Bond angles	
		RMSZ	# Z  >5	RMSZ	# Z  >5
1	A	0.51	0/2160	0.70	0/2933
1	C	0.53	0/2213	0.70	0/3008
2	B	0.46	0/780	0.69	0/1066
2	F	0.49	0/797	0.70	0/1087
3	D	0.51	0/1407	0.72	0/1915
3	G	0.53	0/1550	0.72	0/2106
4	E	0.50	0/1901	0.75	0/2595
4	H	0.54	0/1951	0.75	0/2659
All	All	0.51	0/12759	0.72	0/17369

There are no bond length outliers.

There are no bond angle outliers.

There are no chirality outliers.

There are no planarity outliers.

### 5.2 Close contacts

In the following table, the Non-H and H(model) columns list the number of non-hydrogen atoms and hydrogen atoms in the chain respectively. The H(added) column lists the number of hydrogens added by MolProbity. The Clashes column lists the number of clashes within the asymmetric unit, and the number in parentheses is this value normalized per 1000 atoms of the molecule in the chain. The Symm-Clashes column gives symmetry related clashes, in the same way as for the Clashes column.

Mol	Chain	Non-H	H(model)	H(added)	Clashes	Symm-Clashes
1	A	2098	0	1979	9	0
1	C	2149	0	2020	9	0
2	B	757	0	694	3	0
2	F	774	0	717	3	0

*Continued on next page...*

*Continued from previous page...*

Mol	Chain	Non-H	H(model)	H(added)	Clashes	Symm-Clashes
3	D	1376	0	1259	7	0
3	G	1516	0	1407	5	0
4	E	1851	0	1713	4	0
4	H	1900	0	1762	6	0
5	A	22	0	0	0	0
5	C	22	0	0	0	0
6	H	1	0	0	0	0
7	A	174	0	0	1	0
7	B	56	0	0	0	0
7	C	194	0	0	2	0
7	D	87	0	0	0	0
7	E	139	0	0	0	0
7	F	67	0	0	0	0
7	G	143	0	0	0	0
7	H	180	0	0	0	0
All	All	13506	0	11551	39	0

Clashscore is defined as the number of clashes calculated for the entry per 1000 atoms (including hydrogens) of the entry. The overall clashscore for this entry is 2.

All (39) close contacts within the same asymmetric unit are listed below.

Atom-1	Atom-2	Distance(Å)	Clash(Å)
3:D:149:SER:HA	3:D:151:VAL:H	1.45	0.82
2:F:4:THR:HA	2:F:86:THR:HG21	1.69	0.72
1:C:257:HIS:ND1	7:C:585:HOH:O	2.19	0.71
1:C:198:LEU:HG	1:C:246:LEU:HD11	1.74	0.68
2:F:84:HIS:ND1	2:F:86:THR:HG22	2.10	0.66
1:A:257:HIS:ND1	7:A:557:HOH:O	2.31	0.61
3:G:159:LEU:HB3	4:H:172:CYS:HB2	1.85	0.58
1:A:113:ALA:HB2	2:B:60:TRP:CE2	2.42	0.54
4:H:21:LEU:HD12	4:H:76:LEU:HD23	1.91	0.53
3:G:28:GLY:HA3	3:G:93:SER:HB3	1.92	0.52
4:E:26:ASP:OD1	4:E:72:ARG:NE	2.36	0.51
3:D:28:GLY:HA3	3:D:93:SER:HB3	1.92	0.51
1:A:215:MET:HG3	1:A:257:HIS:CD2	2.46	0.50
1:A:8:PHE:CE2	1:A:95:MET:HG3	2.47	0.50
1:C:77:LEU:HD13	1:C:92:TYR:HB2	1.95	0.48
1:A:46:ARG:HD3	1:A:46:ARG:HA	1.75	0.47
1:C:246:LEU:HD12	1:C:246:LEU:N	2.30	0.47
1:A:77:LEU:HD13	1:A:92:TYR:HB2	1.97	0.46
3:G:152:TYR:O	3:G:173:ALA:HA	2.16	0.45
1:C:46:ARG:HD3	1:C:46:ARG:HA	1.78	0.44

*Continued on next page...*

Continued from previous page...

Atom-1	Atom-2	Distance(Å)	Clash(Å)
4:E:83:PRO:HA	4:E:114:VAL:HB	1.99	0.44
1:C:215:MET:HG3	1:C:257:HIS:CD2	2.53	0.44
3:D:159:LEU:HB3	4:E:172:CYS:HB2	1.99	0.44
1:C:113:ALA:HB2	2:F:60:TRP:CE2	2.52	0.44
1:A:16:ILE:HD13	2:B:34:ASP:OD2	2.18	0.43
1:C:94:ARG:HD3	7:C:416:HOH:O	2.18	0.43
1:A:154:LYS:HD3	3:G:51:LEU:HD11	2.01	0.43
3:G:158:VAL:HG22	3:G:169:ASN:OD1	2.19	0.43
3:D:50:VAL:O	3:D:66:ARG:HD3	2.20	0.42
4:H:83:PRO:HA	4:H:114:VAL:HB	2.01	0.42
4:H:122:PHE:CD2	4:H:188:ARG:HD3	2.55	0.42
3:D:134:PHE:O	3:D:170:SER:HA	2.20	0.41
2:B:24:ASN:HB3	2:B:65:LEU:HD11	2.02	0.41
1:C:61:ARG:HG2	3:D:94:ASN:HB3	2.02	0.41
4:E:121:VAL:HG12	4:E:231:PRO:HB2	2.03	0.41
1:A:43:LYS:HD2	1:A:62:TYR:HB3	2.03	0.41
3:D:152:TYR:O	3:D:173:ALA:HA	2.21	0.41
4:H:150:GLY:O	4:H:188:ARG:HD2	2.21	0.41
4:H:128:VAL:HG23	4:H:238:ALA:HB3	2.04	0.40

There are no symmetry-related clashes.

## 5.3 Torsion angles

### 5.3.1 Protein backbone ⓘ

In the following table, the Percentiles column shows the percent Ramachandran outliers of the chain as a percentile score with respect to all X-ray entries followed by that with respect to entries of similar resolution.

The Analysed column shows the number of residues for which the backbone conformation was analysed, and the total number of residues.

Mol	Chain	Analysed	Favoured	Allowed	Outliers	Percentiles	
1	A	250/271 (92%)	238 (95%)	11 (4%)	1 (0%)	43	66
1	C	257/271 (95%)	250 (97%)	7 (3%)	0	100	100
2	B	94/99 (95%)	93 (99%)	1 (1%)	0	100	100
2	F	95/99 (96%)	94 (99%)	1 (1%)	0	100	100
3	D	179/203 (88%)	176 (98%)	3 (2%)	0	100	100
3	G	196/203 (97%)	192 (98%)	4 (2%)	0	100	100

Continued on next page...

*Continued from previous page...*

Mol	Chain	Analysed	Favoured	Allowed	Outliers	Percentiles	
4	E	239/245 (98%)	234 (98%)	5 (2%)	0	100	100
4	H	243/245 (99%)	235 (97%)	8 (3%)	0	100	100
All	All	1553/1636 (95%)	1512 (97%)	40 (3%)	1 (0%)	59	81

All (1) Ramachandran outliers are listed below:

Mol	Chain	Res	Type
1	A	220	GLU

### 5.3.2 Protein sidechains ⓘ

In the following table, the Percentiles column shows the percent sidechain outliers of the chain as a percentile score with respect to all X-ray entries followed by that with respect to entries of similar resolution. The Analysed column shows the number of residues for which the sidechain conformation was analysed, and the total number of residues.

Mol	Chain	Analysed	Rotameric	Outliers	Percentiles	
1	A	220/241 (91%)	215 (98%)	5 (2%)	63	87
1	C	225/241 (93%)	219 (97%)	6 (3%)	57	83
2	B	80/94 (85%)	78 (98%)	2 (2%)	60	85
2	F	83/94 (88%)	80 (96%)	3 (4%)	47	73
3	D	136/180 (76%)	133 (98%)	3 (2%)	64	88
3	G	165/180 (92%)	161 (98%)	4 (2%)	61	86
4	E	195/211 (92%)	192 (98%)	3 (2%)	76	93
4	H	200/211 (95%)	193 (96%)	7 (4%)	48	74
All	All	1304/1452 (90%)	1271 (98%)	33 (2%)	61	85

All (33) residues with a non-rotameric sidechain are listed below:

Mol	Chain	Res	Type
1	A	16	ILE
1	A	73	PHE
1	A	82	ARG
1	A	152	TYR
1	A	253	LEU
2	B	4	THR
2	B	70	PHE

*Continued on next page...*

*Continued from previous page...*

Mol	Chain	Res	Type
1	C	73	PHE
1	C	78	LYS
1	C	102	GLU
1	C	111	GLN
1	C	152	TYR
1	C	221	ILE
3	D	2	GLN
3	D	85	SER
3	D	157	CYS
4	E	80	SER
4	E	194	ARG
4	E	237	SER
2	F	4	THR
2	F	16	GLU
2	F	70	PHE
3	G	85	SER
3	G	91	LYS
3	G	120	GLN
3	G	163	SER
4	H	111	ARG
4	H	140[A]	GLN
4	H	140[B]	GLN
4	H	194	ARG
4	H	206[A]	ARG
4	H	206[B]	ARG
4	H	237	SER

Some sidechains can be flipped to improve hydrogen bonding and reduce clashes. All (2) such sidechains are listed below:

Mol	Chain	Res	Type
1	A	134	ASN
4	E	120	ASN

### 5.3.3 RNA ⓘ

There are no RNA chains in this entry.

## 5.4 Non-standard residues in protein, DNA, RNA chains ⓘ

There are no non-standard protein/DNA/RNA residues in this entry.

## 5.5 Carbohydrates

There are no carbohydrates in this entry.

## 5.6 Ligand geometry

Of 3 ligands modelled in this entry, 1 is monoatomic - leaving 2 for Mogul analysis.

In the following table, the Counts columns list the number of bonds (or angles) for which Mogul statistics could be retrieved, the number of bonds (or angles) that are observed in the model and the number of bonds (or angles) that are defined in the chemical component dictionary. The Link column lists molecule types, if any, to which the group is linked. The Z score for a bond length (or angle) is the number of standard deviations the observed value is removed from the expected value. A bond length (or angle) with  $|Z| > 2$  is considered an outlier worth inspection. RMSZ is the root-mean-square of all Z scores of the bond lengths (or angles).

Mol	Type	Chain	Res	Link	Bond lengths			Bond angles		
					Counts	RMSZ	$\# Z  > 2$	Counts	RMSZ	$\# Z  > 2$
5	2LJ	A	301	1	20,22,23	1.31	1 (5%)	23,29,31	2.58	6 (26%)
5	2LJ	C	301	1	20,22,23	1.38	1 (5%)	23,29,31	2.63	4 (17%)

In the following table, the Chirals column lists the number of chiral outliers, the number of chiral centers analysed, the number of these observed in the model and the number defined in the chemical component dictionary. Similar counts are reported in the Torsion and Rings columns. '-' means no outliers of that kind were identified.

Mol	Type	Chain	Res	Link	Chirals	Torsions	Rings
5	2LJ	A	301	1	-	0/18/19/20	0/1/1/1
5	2LJ	C	301	1	-	0/18/19/20	0/1/1/1

All (2) bond length outliers are listed below:

Mol	Chain	Res	Type	Atoms	Z	Observed(Å)	Ideal(Å)
5	C	301	2LJ	C8A-N8	5.13	1.41	1.32
5	A	301	2LJ	C8A-N8	4.60	1.40	1.32

All (10) bond angle outliers are listed below:

Mol	Chain	Res	Type	Atoms	Z	Observed(°)	Ideal(°)
5	C	301	2LJ	C4-C4A-C8A	10.46	121.50	114.52
5	A	301	2LJ	C4-C4A-C8A	9.96	121.17	114.52
5	A	301	2LJ	C4A-N5-C6	5.02	127.23	117.90
5	C	301	2LJ	C4A-N5-C6	4.20	125.70	117.90
5	C	301	2LJ	C8A-C4A-N5	-3.41	112.05	117.00

*Continued on next page...*

*Continued from previous page...*

Mol	Chain	Res	Type	Atoms	Z	Observed(°)	Ideal(°)
5	A	301	2LJ	C4A-C8A-N1	2.41	118.05	114.86
5	A	301	2LJ	C2'-C1'-N8	2.23	118.27	111.01
5	C	301	2LJ	C4A-C8A-N1	2.16	117.72	114.86
5	A	301	2LJ	C8A-C4A-N5	-2.16	113.87	117.00
5	A	301	2LJ	C4A-C8A-N8	-2.10	120.27	124.54

There are no chirality outliers.

There are no torsion outliers.

There are no ring outliers.

## 5.7 Other polymers ⓘ

There are no such residues in this entry.

## 5.8 Polymer linkage issues

There are no chain breaks in this entry.

## 6 Fit of model and data ⓘ

### 6.1 Protein, DNA and RNA chains ⓘ

In the following table, the column labelled ‘#RSRZ> 2’ contains the number (and percentage) of RSRZ outliers, followed by percent RSRZ outliers for the chain as percentile scores relative to all X-ray entries and entries of similar resolution. The OWAB column contains the minimum, median, 95<sup>th</sup> percentile and maximum values of the occupancy-weighted average B-factor per residue. The column labelled ‘Q< 0.9’ lists the number of (and percentage) of residues with an average occupancy less than 0.9.

Mol	Chain	Analysed	<RSRZ>	#RSRZ>2	OWAB(Å <sup>2</sup> )	Q<0.9
1	A	255/271 (94%)	-0.35	4 (1%) 68 71	12, 25, 57, 75	0
1	C	263/271 (97%)	-0.40	3 (1%) 77 79	10, 22, 48, 61	0
2	B	96/99 (96%)	-0.06	3 (3%) 47 48	18, 43, 66, 85	0
2	F	97/99 (97%)	-0.36	0 100 100	12, 28, 55, 64	0
3	D	185/203 (91%)	-0.20	4 (2%) 59 61	10, 33, 76, 89	0
3	G	198/203 (97%)	-0.49	0 100 100	9, 24, 51, 63	0
4	E	240/245 (97%)	-0.28	1 (0%) 90 92	12, 29, 67, 87	0
4	H	243/245 (99%)	-0.54	1 (0%) 90 92	11, 23, 42, 67	0
All	All	1577/1636 (96%)	-0.36	16 (1%) 79 81	9, 26, 62, 89	0

All (16) RSRZ outliers are listed below:

Mol	Chain	Res	Type	RSRZ
1	A	222	VAL	3.8
1	A	221	ILE	3.6
1	A	223	GLN	3.0
1	C	0	MET	2.9
1	C	222	VAL	2.7
2	B	92	ILE	2.7
3	D	198	PRO	2.5
3	D	197	PHE	2.5
2	B	78	TYR	2.5
2	B	75	LYS	2.4
4	H	2	ALA	2.3
4	E	207	ASN	2.2
1	A	251	SER	2.1
3	D	181	ALA	2.1
3	D	146	SER	2.1
1	C	246	LEU	2.1



## 6.2 Non-standard residues in protein, DNA, RNA chains ⓘ

There are no non-standard protein/DNA/RNA residues in this entry.

## 6.3 Carbohydrates ⓘ

There are no carbohydrates in this entry.

## 6.4 Ligands ⓘ

In the following table, the Atoms column lists the number of modelled atoms in the group and the number defined in the chemical component dictionary. LLDF column lists the quality of electron density of the group with respect to its neighbouring residues in protein, DNA or RNA chains. The B-factors column lists the minimum, median, 95<sup>th</sup> percentile and maximum values of B factors of atoms in the group. The column labelled 'Q< 0.9' lists the number of atoms with occupancy less than 0.9.

Mol	Type	Chain	Res	Atoms	RSR	LLDF	B-factors(Å <sup>2</sup> )	Q<0.9
5	2LJ	C	301	22/23	0.18	1.29	11,13,17,18	0
5	2LJ	A	301	22/23	0.14	0.83	12,14,16,18	0
6	NA	H	301	1/1	0.12	-0.20	40,40,40,40	0

## 6.5 Other polymers ⓘ

There are no such residues in this entry.