



Full wwPDB X-ray Structure Validation Report

Feb 28, 2014 – 08:45 AM GMT

PDB ID : 1NSM
Title : Crystal structure of galactose mutarotase from *Lactococcus lactis* mutant D243A complexed with galactose
Authors : Holden, H.M.; Thoden, J.B.
Deposited on : 2003-01-28
Resolution : 1.85 Å(reported)

This is a full wwPDB validation report for a publicly released PDB entry.
We welcome your comments at validation@mail.wwpdb.org
A user guide is available at <http://wwpdb.org/ValidationPDFNotes.html>

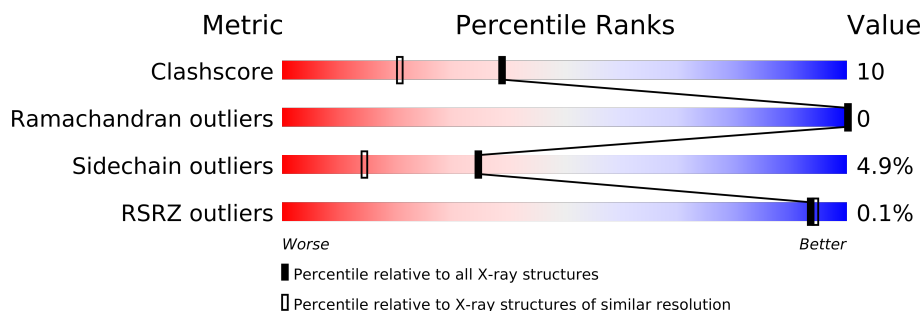
The following versions of software and data (see [references](#)) were used in the production of this report:

MolProbity : 4.02b-467
Mogul : 1.15 2013
Xtriage (Phenix) : dev-1323
EDS : stable22639
Percentile statistics : 21963
Refmac : 5.8.0049
CCP4 : 6.3.0 (Settle)
Ideal geometry (proteins) : Engh & Huber (2001)
Ideal geometry (DNA, RNA) : Parkinson et. al. (1996)
Validation Pipeline (wwPDB-VP) : stable22683

1 Overall quality at a glance

The reported resolution of this entry is 1.85 Å.

Percentile scores (ranging between 0-100) for global validation metrics of the entry are shown in the following graphic. The table shows the number of entries on which the scores are based.



Metric	Whole archive (#Entries)	Similar resolution (#Entries, resolution range(Å))
Clashscore	79885	1470 (1.86-1.86)
Ramachandran outliers	78287	1451 (1.86-1.86)
Sidechain outliers	78261	1451 (1.86-1.86)
RSRZ outliers	66119	1269 (1.86-1.86)

The table below summarises the geometric issues observed across the polymeric chains and their fit to the electron density. The red, orange, yellow and green segments on the lower bar indicate the fraction of residues that contain outliers for ≥ 3 , 2, 1 and 0 types of geometric quality criteria. The upper red bar (where present) indicates the fraction of residues that have poor fit to the electron density.

Mol	Chain	Length	Quality of chain
1	A	347	
1	B	347	

The following table lists non-polymeric compounds that are outliers for geometric or electron-density-fit criteria:

Mol	Type	Chain	Res	Geometry	Electron density
2	GAL	A	1400[A]	-	X
2	GAL	A	1400[B]	-	X
3	GLA	B	2400	-	X
4	NA	B	2401	-	X

2 Entry composition

There are 5 unique types of molecules in this entry. The entry contains 5871 atoms, of which 0 are hydrogen and 0 are deuterium.

In the tables below, the ZeroOcc column contains the number of atoms modelled with zero occupancy, the AltConf column contains the number of residues with at least one atom in alternate conformation and the Trace column contains the number of residues modelled with at most 2 atoms.

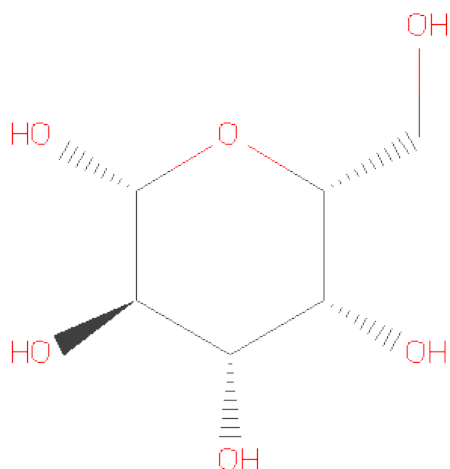
- Molecule 1 is a protein called GALACTOSE MUTAROTASE.

Mol	Chain	Residues	Atoms					ZeroOcc	AltConf	Trace
1	A	339	Total	C	N	O	S	0	3	0
			2655	1677	447	528	3			
1	B	346	Total	C	N	O	S	0	2	0
			2723	1715	466	539	3			

There are 20 discrepancies between the modelled and reference sequences:

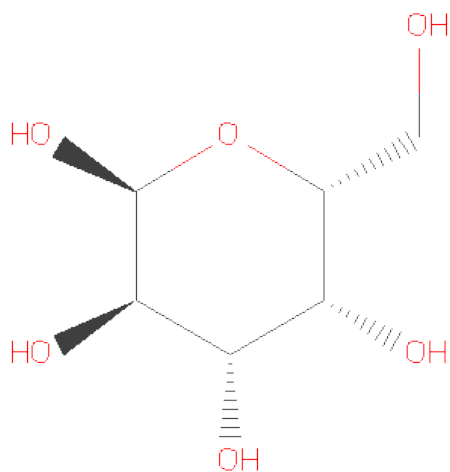
Chain	Residue	Modelled	Actual	Comment	Reference
A	2	SER	GLU	CLONING ARTIFACT	UNP Q9ZB17
A	243	ALA	ASP	ENGINEERED	UNP Q9ZB17
A	340	LEU	-	EXPRESSION TAG	UNP Q9ZB17
A	341	GLU	-	EXPRESSION TAG	UNP Q9ZB17
A	342	HIS	-	EXPRESSION TAG	UNP Q9ZB17
A	343	HIS	-	EXPRESSION TAG	UNP Q9ZB17
A	344	HIS	-	EXPRESSION TAG	UNP Q9ZB17
A	345	HIS	-	EXPRESSION TAG	UNP Q9ZB17
A	346	HIS	-	EXPRESSION TAG	UNP Q9ZB17
A	347	HIS	-	EXPRESSION TAG	UNP Q9ZB17
B	2	SER	GLU	CLONING ARTIFACT	UNP Q9ZB17
B	243	ALA	ASP	ENGINEERED	UNP Q9ZB17
B	340	LEU	-	EXPRESSION TAG	UNP Q9ZB17
B	341	GLU	-	EXPRESSION TAG	UNP Q9ZB17
B	342	HIS	-	EXPRESSION TAG	UNP Q9ZB17
B	343	HIS	-	EXPRESSION TAG	UNP Q9ZB17
B	344	HIS	-	EXPRESSION TAG	UNP Q9ZB17
B	345	HIS	-	EXPRESSION TAG	UNP Q9ZB17
B	346	HIS	-	EXPRESSION TAG	UNP Q9ZB17
B	347	HIS	-	EXPRESSION TAG	UNP Q9ZB17

- Molecule 2 is SUGAR (D-GALACTOSE) (three-letter code: GAL) (formula: C₆H₁₂O₆).



Mol	Chain	Residues	Atoms			ZeroOcc	AltConf
			Total	C	O		
2	A	1	13	6	7	0	1

- Molecule 3 is SUGAR (ALPHA D-GALACTOSE) (three-letter code: GLA) (formula: C₆H₁₂O₆).



Mol	Chain	Residues	Atoms			ZeroOcc	AltConf
			Total	C	O		
3	B	1	12	6	6	0	0

- Molecule 4 is SODIUM ION (three-letter code: NA) (formula: Na).

Mol	Chain	Residues	Atoms		ZeroOcc	AltConf
4	B	1	Total 1	Na 1	0	0

- Molecule 5 is water.

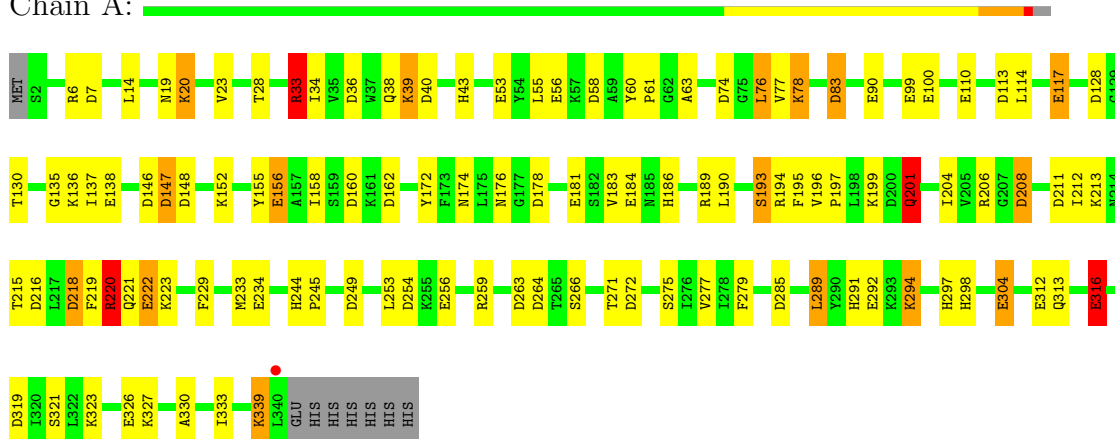
Mol	Chain	Residues	Atoms		ZeroOcc	AltConf
5	A	214	Total 214	O 214	0	0
5	B	253	Total 253	O 253	0	0

3 Residue-property plots

These plots are drawn for all protein, RNA and DNA chains in the entry. The first graphic for a chain summarises the proportions of errors displayed in the second graphic. The second graphic shows the sequence view annotated by issues in geometry and electron density. Residues are color-coded according to the number of geometric quality criteria for which they contain at least one outlier: green = 0, yellow = 1, orange = 2 and red = 3 or more. A red dot above a residue indicates a poor fit to the electron density ($RSRZ > 2$). Stretches of 2 or more consecutive residues without any outlier are shown as a green connector. Residues present in the sample, but not in the model, are shown in grey.

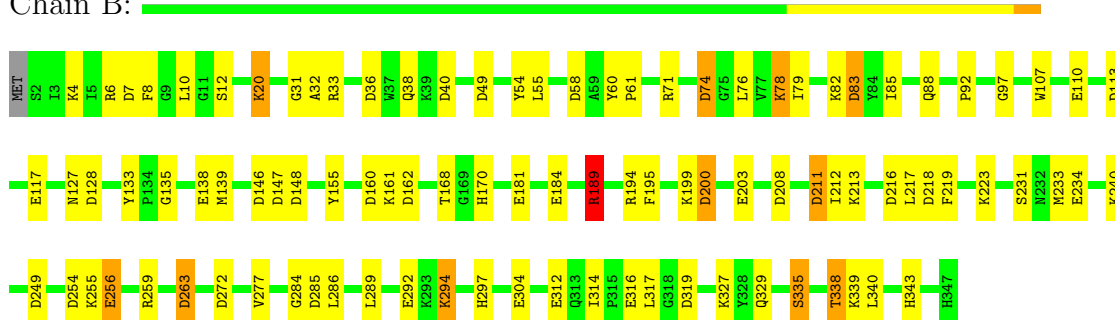
• Molecule 1: GALACTOSE MUTAROTASE

Chain A:



• Molecule 1: GALACTOSE MUTAROTASE

Chain B:



4 Data and refinement statistics

Property	Value	Source
Space group	P 21 21 21	Depositor
Cell constants a, b, c, α , β , γ	44.80Å 76.30Å 211.00Å 90.00° 90.00° 90.00°	Depositor
Resolution (Å)	30.00 – 1.85 71.75 – 1.81	Depositor EDS
% Data completeness (in resolution range)	89.7 (30.00-1.85) 86.2 (71.75-1.81)	Depositor EDS
R_{merge}	(Not available)	Depositor
R_{sym}	0.04	Depositor
$\langle I/\sigma(I) \rangle$ ¹	1.06 (at 1.81Å)	Xtriage
Refinement program	TNT	Depositor
R, R_{free}	0.176 , 0.236 0.177 , (Not available)	Depositor DCC
R_{free} test set	No test flags present.	DCC
Wilson B-factor (Å ²)	16.2	Xtriage
Anisotropy	0.502	Xtriage
Bulk solvent k_{sol} (e/Å ³), B_{sol} (Å ²)	0.34 , 88.3	EDS
Estimated twinning fraction	No twinning to report.	Xtriage
L-test for twinning	$\langle L \rangle = 0.49$, $\langle L^2 \rangle = 0.32$	Xtriage
Outliers	0 of 57866 reflections	Xtriage
F_o, F_c correlation	0.96	EDS
Total number of atoms	5871	wwPDB-VP
Average B, all atoms (Å ²)	27.0	wwPDB-VP

Xtriage's analysis on translational NCS is as follows: *The largest off-origin peak in the Patterson function is 4.78% of the height of the origin peak. No significant pseudotranslation is detected.*

¹Intensities estimated from amplitudes.

5 Model quality ⓘ

5.1 Standard geometry ⓘ

Bond lengths and bond angles in the following residue types are not validated in this section: GLA, GAL, NA

The Z score for a bond length (or angle) is the number of standard deviations the observed value is removed from the expected value. A bond length (or angle) with $|Z| > 5$ is considered an outlier worth inspection. RMSZ is the root-mean-square of all Z scores of the bond lengths (or angles).

Mol	Chain	Bond lengths		Bond angles	
		RMSZ	# $ Z > 5$	RMSZ	# $ Z > 5$
1	A	1.01	15/2719 (0.6%)	1.54	55/3680 (1.5%)
1	B	1.03	10/2789 (0.4%)	1.53	50/3774 (1.3%)
All	All	1.02	25/5508 (0.5%)	1.53	105/7454 (1.4%)

All (25) bond length outliers are listed below:

Mol	Chain	Res	Type	Atoms	Z	Observed(Å)	Ideal(Å)
1	A	99	GLU	CD-OE2	8.46	1.34	1.25
1	A	100	GLU	CD-OE2	7.25	1.33	1.25
1	A	312	GLU	CD-OE2	7.00	1.33	1.25
1	A	304	GLU	CD-OE2	6.68	1.32	1.25
1	B	312	GLU	CD-OE2	6.40	1.32	1.25
1	B	203	GLU	CD-OE2	6.31	1.32	1.25
1	B	184	GLU	CD-OE2	6.17	1.32	1.25
1	B	292	GLU	CD-OE2	6.11	1.32	1.25
1	B	234	GLU	CD-OE2	6.08	1.32	1.25
1	A	53	GLU	CD-OE2	6.07	1.32	1.25
1	B	110	GLU	CD-OE2	5.78	1.32	1.25
1	A	156	GLU	CD-OE2	5.74	1.31	1.25
1	B	181	GLU	CD-OE2	5.62	1.31	1.25
1	A	184	GLU	CD-OE2	5.57	1.31	1.25
1	A	117	GLU	CD-OE2	5.51	1.31	1.25
1	A	138	GLU	CD-OE2	5.50	1.31	1.25
1	B	256	GLU	CD-OE2	5.48	1.31	1.25
1	B	138	GLU	CD-OE2	5.46	1.31	1.25
1	A	222	GLU	CD-OE2	5.46	1.31	1.25
1	A	256	GLU	CD-OE2	5.34	1.31	1.25
1	A	316	GLU	CD-OE2	5.30	1.31	1.25
1	B	117	GLU	CD-OE2	5.22	1.31	1.25
1	A	90	GLU	CD-OE1	-5.09	1.20	1.25
1	A	181	GLU	CD-OE2	5.06	1.31	1.25

Continued on next page...

Continued from previous page...

Mol	Chain	Res	Type	Atoms	Z	Observed(Å)	Ideal(Å)
1	A	110	GLU	CD-OE2	5.01	1.31	1.25

All (105) bond angle outliers are listed below:

Mol	Chain	Res	Type	Atoms	Z	Observed(°)	Ideal(°)
1	A	220	ARG	NE-CZ-NH1	11.78	126.19	120.30
1	B	146	ASP	CB-CG-OD1	10.84	128.05	118.30
1	A	218	ASP	CB-CG-OD2	-9.53	109.72	118.30
1	B	272	ASP	CB-CG-OD2	-9.27	109.96	118.30
1	A	208	ASP	CB-CG-OD1	9.23	126.61	118.30
1	A	220	ARG	NE-CZ-NH2	-8.97	115.82	120.30
1	B	71	ARG	NE-CZ-NH1	8.94	124.77	120.30
1	B	146	ASP	CB-CG-OD2	-8.84	110.35	118.30
1	A	146	ASP	CB-CG-OD2	-8.68	110.48	118.30
1	B	49	ASP	CB-CG-OD1	8.68	126.11	118.30
1	B	36	ASP	CB-CG-OD1	8.64	126.07	118.30
1	A	7	ASP	CB-CG-OD2	-8.53	110.62	118.30
1	A	147	ASP	CB-CG-OD2	-8.44	110.70	118.30
1	B	147	ASP	CB-CG-OD2	-8.42	110.72	118.30
1	B	189	ARG	NE-CZ-NH1	8.38	124.49	120.30
1	A	208	ASP	CB-CG-OD2	-8.33	110.80	118.30
1	A	339	LYS	N-CA-CB	8.31	125.56	110.60
1	B	33	ARG	N-CA-CB	-8.21	95.82	110.60
1	A	162	ASP	CB-CG-OD2	-8.21	110.92	118.30
1	B	160	ASP	CB-CG-OD2	-8.19	110.93	118.30
1	A	259	ARG	NE-CZ-NH2	-8.17	116.21	120.30
1	A	113	ASP	CB-CG-OD2	-8.16	110.95	118.30
1	A	146	ASP	CB-CG-OD1	8.13	125.62	118.30
1	B	249	ASP	CB-CG-OD1	7.99	125.49	118.30
1	B	49	ASP	CB-CG-OD2	-7.98	111.12	118.30
1	B	249	ASP	CB-CG-OD2	-7.90	111.19	118.30
1	B	36	ASP	CB-CG-OD2	-7.74	111.33	118.30
1	A	264	ASP	CB-CG-OD1	7.66	125.20	118.30
1	A	148	ASP	CB-CG-OD2	-7.48	111.57	118.30
1	A	40	ASP	CB-CG-OD2	-7.46	111.59	118.30
1	A	264	ASP	CB-CG-OD2	-7.37	111.67	118.30
1	B	58	ASP	CB-CG-OD1	7.32	124.89	118.30
1	B	263	ASP	CB-CG-OD1	7.28	124.85	118.30
1	B	113	ASP	CB-CG-OD2	-7.28	111.75	118.30
1	B	40	ASP	CB-CG-OD2	-7.17	111.85	118.30
1	B	54	TYR	CB-CG-CD1	-7.15	116.71	121.00
1	A	249	ASP	CB-CG-OD2	-7.14	111.88	118.30

Continued on next page...

Continued from previous page...

Mol	Chain	Res	Type	Atoms	Z	Observed(°)	Ideal(°)
1	A	272	ASP	CB-CG-OD1	7.04	124.64	118.30
1	A	7	ASP	CB-CG-OD1	6.99	124.59	118.30
1	A	178	ASP	CB-CG-OD2	-6.90	112.09	118.30
1	A	162	ASP	CB-CG-OD1	6.89	124.50	118.30
1	B	160	ASP	CB-CG-OD1	6.89	124.50	118.30
1	A	160	ASP	CB-CG-OD2	-6.87	112.12	118.30
1	A	113	ASP	CB-CG-OD1	6.84	124.46	118.30
1	A	218	ASP	CB-CG-OD1	6.80	124.42	118.30
1	A	160	ASP	CB-CG-OD1	6.76	124.39	118.30
1	A	74	ASP	CB-CG-OD2	-6.75	112.23	118.30
1	B	272	ASP	CB-CG-OD1	6.73	124.36	118.30
1	A	216	ASP	CB-CG-OD2	-6.64	112.32	118.30
1	A	178	ASP	CB-CG-OD1	6.61	124.25	118.30
1	A	194	ARG	NE-CZ-NH1	6.60	123.60	120.30
1	B	83	ASP	CB-CG-OD2	-6.50	112.45	118.30
1	A	211	ASP	CB-CG-OD2	-6.49	112.46	118.30
1	B	194	ARG	NE-CZ-NH2	-6.45	117.08	120.30
1	B	147	ASP	CB-CG-OD1	6.38	124.04	118.30
1	B	254	ASP	CB-CG-OD1	6.38	124.04	118.30
1	B	83	ASP	CB-CG-OD1	6.33	124.00	118.30
1	A	36	ASP	CB-CG-OD2	-6.33	112.61	118.30
1	A	216	ASP	CB-CG-OD1	6.30	123.97	118.30
1	B	285[A]	ASP	CB-CG-OD2	-6.26	112.66	118.30
1	B	285[B]	ASP	CB-CG-OD2	-6.26	112.66	118.30
1	A	36	ASP	CB-CG-OD1	6.24	123.92	118.30
1	B	40	ASP	CB-CG-OD1	6.23	123.91	118.30
1	B	254	ASP	CB-CG-OD2	-6.23	112.69	118.30
1	B	6	ARG	NE-CZ-NH1	6.22	123.41	120.30
1	B	216	ASP	CB-CG-OD2	-6.17	112.75	118.30
1	B	74	ASP	CB-CG-OD2	-6.15	112.77	118.30
1	A	249	ASP	CB-CG-OD1	6.00	123.69	118.30
1	A	147	ASP	CB-CG-OD1	5.92	123.63	118.30
1	B	285[A]	ASP	CB-CG-OD1	5.92	123.63	118.30
1	B	285[B]	ASP	CB-CG-OD1	5.92	123.63	118.30
1	A	155	TYR	CB-CG-CD1	5.89	124.53	121.00
1	B	319	ASP	CB-CG-OD1	5.87	123.58	118.30
1	B	259	ARG	NE-CZ-NH1	5.84	123.22	120.30
1	B	162	ASP	CB-CG-OD1	5.83	123.54	118.30
1	A	148	ASP	CB-CG-OD1	5.80	123.52	118.30
1	A	285	ASP	CB-CG-OD2	-5.80	113.08	118.30
1	B	148	ASP	CB-CG-OD2	-5.77	113.11	118.30
1	B	128	ASP	CB-CG-OD2	-5.72	113.15	118.30

Continued on next page...

Continued from previous page...

Mol	Chain	Res	Type	Atoms	Z	Observed(°)	Ideal(°)
1	B	7	ASP	CB-CG-OD1	5.71	123.44	118.30
1	A	330	ALA	N-CA-CB	5.71	118.09	110.10
1	A	272	ASP	CB-CG-OD2	-5.70	113.17	118.30
1	B	259	ARG	NE-CZ-NH2	-5.69	117.45	120.30
1	A	254	ASP	CB-CG-OD1	5.68	123.41	118.30
1	A	263	ASP	CB-CG-OD1	5.54	123.28	118.30
1	B	200	ASP	CB-CG-OD2	-5.53	113.33	118.30
1	B	211	ASP	CB-CG-OD2	-5.53	113.33	118.30
1	A	194	ARG	NE-CZ-NH2	-5.52	117.54	120.30
1	A	319	ASP	CB-CG-OD2	-5.49	113.36	118.30
1	B	58	ASP	CB-CG-OD2	-5.46	113.39	118.30
1	A	128	ASP	CB-CG-OD1	5.43	123.19	118.30
1	A	321	SER	N-CA-CB	5.36	118.54	110.50
1	B	113	ASP	CB-CG-OD1	5.33	123.10	118.30
1	B	148	ASP	CB-CG-OD1	5.33	123.09	118.30
1	A	244	HIS	CB-CA-C	-5.31	99.78	110.40
1	A	58	ASP	CB-CG-OD1	5.26	123.03	118.30
1	A	263	ASP	CB-CG-OD2	-5.22	113.60	118.30
1	B	218	ASP	CB-CG-OD1	5.22	123.00	118.30
1	A	74	ASP	CB-CG-OD1	5.17	122.95	118.30
1	A	33	ARG	N-CA-CB	-5.14	101.35	110.60
1	A	83	ASP	CB-CG-OD1	5.12	122.90	118.30
1	A	289	LEU	CB-CG-CD1	-5.08	102.36	111.00
1	B	335	SER	N-CA-CB	5.08	118.12	110.50
1	A	201	GLN	N-CA-CB	5.01	119.63	110.60
1	B	128	ASP	CB-CG-OD1	5.00	122.80	118.30

There are no chirality outliers.

There are no planarity outliers.

5.2 Close contacts ⓘ

In the following table, the Non-H and H(model) columns list the number of non-hydrogen atoms and hydrogen atoms in the chain respectively. The H(added) column lists the number of hydrogens added by MolProbity. The Clashes column lists the number of clashes within the asymmetric unit, and the number in parentheses is this value normalized per 1000 atoms of the molecule in the chain. The Symm-Clashes column gives symmetry related clashes, in the same way as for the Clashes column.

Mol	Chain	Non-H	H(model)	H(added)	Clashes	Symm-Clashes
1	A	2655	0	2597	57	0

Continued on next page...

Continued from previous page...

Mol	Chain	Non-H	H(model)	H(added)	Clashes	Symm-Clashes
1	B	2723	0	2637	48	0
2	A	13	0	3	0	0
3	B	12	0	12	1	0
4	B	1	0	0	0	0
5	A	214	0	0	2	0
5	B	253	0	0	3	0
All	All	5871	0	5249	104	0

Clashscore is defined as the number of clashes calculated for the entry per 1000 atoms (including hydrogens) of the entry. The overall clashscore for this entry is 10.

All (104) close contacts within the same asymmetric unit are listed below.

Atom-1	Atom-2	Distance(Å)	Clash(Å)
1:A:78:LYS:HE3	1:A:83:ASP:OD1	1.84	0.76
1:B:338:THR:CG2	1:B:339:LYS:HG3	2.18	0.73
1:B:78:LYS:HB3	1:B:78:LYS:NZ	2.06	0.70
1:A:152:LYS:HG3	1:A:333:ILE:HG12	1.72	0.70
1:A:289:LEU:HD23	1:A:294:LYS:HA	1.74	0.68
1:B:88:GLN:NE2	1:B:92:PRO:O	2.30	0.65
1:B:231:SER:OG	1:B:233:MET:HG3	1.99	0.63
1:A:20:LYS:HD2	1:A:147:ASP:OD2	1.98	0.62
1:A:218:ASP:OD1	1:A:220:ARG:HB2	2.00	0.61
1:A:193:SER:HB3	1:A:213:LYS:HE3	1.81	0.60
1:A:33:ARG:HB2	1:A:63:ALA:HA	1.82	0.60
1:A:294:LYS:HB2	1:A:294:LYS:NZ	2.17	0.60
1:B:78:LYS:HB3	1:B:78:LYS:HZ2	1.65	0.59
1:B:338:THR:HG23	1:B:339:LYS:HG3	1.84	0.58
1:B:338:THR:HG22	1:B:339:LYS:HG3	1.85	0.57
1:B:263:ASP:H	1:B:343:HIS:HD1	1.52	0.56
1:A:221:GLN:O	1:A:222:GLU:C	2.44	0.56
1:A:218:ASP:OD2	1:A:220:ARG:NH1	2.38	0.56
1:B:189:ARG:HH11	1:B:189:ARG:HG3	1.71	0.55
1:B:74:ASP:HA	1:B:92:PRO:O	2.07	0.55
1:A:213:LYS:HG2	1:A:220:ARG:NH1	2.21	0.55
1:A:193:SER:O	1:A:212:ILE:HG13	2.07	0.54
1:B:189:ARG:NH2	1:B:256:GLU:O	2.37	0.54
1:B:212:ILE:HD12	1:B:217:LEU:O	2.06	0.54
1:A:199:LYS:NZ	5:A:1613:HOH:O	2.35	0.54
1:B:189:ARG:HH11	1:B:189:ARG:CG	2.20	0.54
1:A:19:ASN:HB2	1:A:147:ASP:OD1	2.07	0.53
1:A:221:GLN:HB2	5:A:1502:HOH:O	2.06	0.53
1:A:201:GLN:CD	1:A:201:GLN:H	2.11	0.53

Continued on next page...

Continued from previous page...

Atom-1	Atom-2	Distance(Å)	Clash(Å)
1:A:215:THR:HB	1:A:233:MET:HE3	1.91	0.52
1:A:218:ASP:OD1	1:A:220:ARG:HD3	2.10	0.51
1:A:130:THR:HG23	1:B:127:ASN:HB2	1.92	0.51
1:A:28:THR:HG22	1:A:33:ARG:HG2	1.92	0.51
1:A:323:LYS:HB2	1:A:326:GLU:HG3	1.93	0.51
1:B:76:LEU:HD12	1:B:85:ILE:HG13	1.92	0.50
1:B:211:ASP:OD1	1:B:213:LYS:HG3	2.12	0.50
1:B:189:ARG:HD3	5:B:2466:HOH:O	2.12	0.50
1:A:172:TYR:HH	1:A:279:PHE:HE2	1.60	0.49
1:A:183:VAL:HG22	1:A:298:HIS:O	2.12	0.49
1:A:215:THR:HB	1:A:233:MET:CE	2.43	0.49
1:B:335:SER:HB2	5:B:2498:HOH:O	2.12	0.49
1:B:277:VAL:HB	1:B:304:GLU:HB2	1.94	0.49
1:A:193:SER:CB	1:A:213:LYS:HE3	2.43	0.49
1:A:190:LEU:HB3	1:A:219:PHE:HB2	1.93	0.49
1:A:316:GLU:OE1	1:A:316:GLU:N	2.45	0.48
1:A:213:LYS:HG2	1:A:220:ARG:CZ	2.43	0.48
1:B:289:LEU:HD23	1:B:294:LYS:HA	1.95	0.48
1:B:107:TRP:CH2	1:B:139:MET:CE	2.97	0.48
1:A:253:LEU:HD13	1:A:271:THR:C	2.33	0.48
1:B:60:TYR:N	1:B:61:PRO:CD	2.77	0.48
1:B:78:LYS:HG3	1:B:83:ASP:OD1	2.13	0.47
1:B:20:LYS:HE3	1:B:20:LYS:HB2	1.60	0.47
1:B:97:GLY:HA2	1:B:133:TYR:OH	2.15	0.46
1:A:291:HIS:O	1:A:292[A]:GLU:HB2	2.16	0.46
1:A:193:SER:C	1:A:212:ILE:HG13	2.35	0.46
1:A:76:LEU:HD23	1:A:77:VAL:N	2.30	0.46
1:A:197:PRO:HD2	1:A:208:ASP:O	2.15	0.46
1:A:137:ILE:HD13	1:A:137:ILE:HG21	1.74	0.46
1:A:297:HIS:O	1:A:298:HIS:HB2	2.16	0.46
1:A:294:LYS:CB	1:A:294:LYS:NZ	2.80	0.45
1:B:10:LEU:CD1	1:B:55:LEU:HD12	2.46	0.45
1:B:170:HIS:NE2	3:B:2400:GLA:O2	2.45	0.45
1:A:174:ASN:OD1	1:A:176:ASN:HB2	2.17	0.45
1:A:316:GLU:H	1:A:316:GLU:CD	2.19	0.45
1:A:277:VAL:HB	1:A:304:GLU:HB2	1.98	0.45
1:A:78:LYS:HB2	1:A:78:LYS:NZ	2.33	0.44
1:B:199:LYS:HG2	1:B:200:ASP:OD1	2.17	0.44
1:B:189:ARG:NH1	1:B:189:ARG:CG	2.79	0.44
1:B:219:PHE:CD2	1:B:223:LYS:HG2	2.52	0.44
1:B:79:ILE:N	1:B:82:LYS:O	2.41	0.44
1:B:284:GLY:N	1:B:297:HIS:ND1	2.58	0.44

Continued on next page...

Continued from previous page...

Atom-1	Atom-2	Distance(Å)	Clash(Å)
1:B:168:THR:HG21	1:B:304:GLU:HB3	2.00	0.44
1:A:196:VAL:HB	1:A:245:PRO:HG2	1.99	0.44
1:A:291:HIS:O	1:A:292[B]:GLU:HB2	2.16	0.43
1:A:60:TYR:N	1:A:61:PRO:CD	2.80	0.43
1:B:340:LEU:HD12	1:B:340:LEU:HA	1.67	0.43
1:B:208:ASP:N	1:B:208:ASP:OD2	2.49	0.43
1:B:8:PHE:HB3	1:B:12:SER:OG	2.19	0.43
1:A:34:ILE:O	1:A:34:ILE:HG23	2.18	0.43
1:A:156:GLU:HB3	1:A:327:LYS:HE3	2.01	0.43
1:B:240:LYS:HA	5:B:2556:HOH:O	2.18	0.42
1:A:23:VAL:HG22	1:A:39:LYS:HG3	1.99	0.42
1:B:155:TYR:O	1:B:329:GLN:HA	2.19	0.42
1:A:199:LYS:HB2	1:A:206:ARG:HA	2.02	0.42
1:B:78:LYS:CB	1:B:78:LYS:NZ	2.80	0.42
1:B:31:GLY:O	1:B:32:ALA:C	2.58	0.41
1:B:286:LEU:HD12	1:B:286:LEU:HA	1.67	0.41
1:B:135:GLY:O	1:B:161:LYS:HD2	2.20	0.41
1:A:14:LEU:HA	1:A:14:LEU:HD12	1.85	0.41
1:B:199:LYS:HB2	1:B:199:LYS:HE3	1.84	0.41
1:A:114:LEU:HB2	1:A:117:GLU:O	2.21	0.41
1:A:196:VAL:HA	1:A:197:PRO:HD2	1.89	0.41
1:B:38:GLN:HE21	1:B:38:GLN:HB3	1.46	0.41
1:B:217:LEU:HD23	1:B:217:LEU:HA	1.89	0.41
1:A:199:LYS:HD2	1:A:204:ILE:HD11	2.02	0.41
1:B:317:LEU:HA	1:B:317:LEU:HD23	1.77	0.41
1:A:229:PHE:HA	1:A:229:PHE:HD2	1.65	0.41
1:A:135:GLY:HA3	1:A:136:LYS:HA	1.87	0.41
1:A:189:ARG:HG3	1:A:222:GLU:N	2.37	0.40
1:A:38:GLN:NE2	1:A:43:HIS:CE1	2.89	0.40
1:A:55:LEU:HA	1:A:55:LEU:HD23	1.92	0.40

There are no symmetry-related clashes.

5.3 Torsion angles

5.3.1 Protein backbone ⓘ

In the following table, the Percentiles column shows the percent Ramachandran outliers of the chain as a percentile score with respect to all X-ray entries followed by that with respect to entries of similar resolution. The Analysed column shows the number of residues for which the backbone conformation was analysed, and the total number of residues.

Mol	Chain	Analysed	Favoured	Allowed	Outliers	Percentiles	
1	A	340/347 (98%)	319 (94%)	21 (6%)	0	100	100
1	B	346/347 (100%)	327 (94%)	19 (6%)	0	100	100
All	All	686/694 (99%)	646 (94%)	40 (6%)	0	100	100

There are no Ramachandran outliers to report.

5.3.2 Protein sidechains ⓘ

In the following table, the Percentiles column shows the percent sidechain outliers of the chain as a percentile score with respect to all X-ray entries followed by that with respect to entries of similar resolution. The Analysed column shows the number of residues for which the sidechain conformation was analysed, and the total number of residues.

Mol	Chain	Analysed	Rotameric	Outliers	Percentiles	
1	A	294/299 (98%)	274 (93%)	20 (7%)	22	6
1	B	300/299 (100%)	291 (97%)	9 (3%)	53	34
All	All	594/598 (99%)	565 (95%)	29 (5%)	35	14

All (29) residues with a non-rotameric sidechain are listed below:

Mol	Chain	Res	Type
1	A	6	ARG
1	A	20	LYS
1	A	33	ARG
1	A	39	LYS
1	A	56	GLU
1	A	76	LEU
1	A	78	LYS
1	A	186	HIS
1	A	193	SER
1	A	195	PHE
1	A	201	GLN
1	A	220	ARG
1	A	223	LYS
1	A	234	GLU
1	A	266	SER
1	A	275	SER
1	A	294	LYS
1	A	313	GLN
1	A	316	GLU

Continued on next page...

Continued from previous page...

Mol	Chain	Res	Type
1	A	339	LYS
1	B	4	LYS
1	B	20	LYS
1	B	78	LYS
1	B	189	ARG
1	B	195	PHE
1	B	255	LYS
1	B	294	LYS
1	B	327	LYS
1	B	338	THR

Some sidechains can be flipped to improve hydrogen bonding and reduce clashes. All (4) such sidechains are listed below:

Mol	Chain	Res	Type
1	A	38	GLN
1	A	295	GLN
1	B	38	GLN
1	B	224	GLN

5.3.3 RNA ⓘ

There are no RNA chains in this entry.

5.4 Non-standard residues in protein, DNA, RNA chains ⓘ

There are no non-standard protein/DNA/RNA residues in this entry.

5.5 Carbohydrates ⓘ

There are no carbohydrates in this entry.

5.6 Ligand geometry ⓘ

Of 4 ligands modelled in this entry, 1 is monoatomic and 2 are modelled with single atom - leaving 1 for Mogul analysis.

In the following table, the Counts columns list the number of bonds (or angles) for which Mogul statistics could be retrieved, the number of bonds (or angles) that are observed in the model and the number of bonds (or angles) that are defined in the chemical component dictionary. The Link

column lists molecule types, if any, to which the group is linked. The Z score for a bond length (or angle) is the number of standard deviations the observed value is removed from the expected value. A bond length (or angle) with $|Z| > 2$ is considered an outlier worth inspection. RMSZ is the root-mean-square of all Z scores of the bond lengths (or angles).

Mol	Type	Chain	Res	Link	Bond lengths			Bond angles		
					Counts	RMSZ	$\# Z > 2$	Counts	RMSZ	$\# Z > 2$
3	GLA	B	2400	-	12,12,12	0.45	0	17,17,17	1.64	5 (29%)

In the following table, the Chirals column lists the number of chiral outliers, the number of chiral centers analysed, the number of these observed in the model and the number defined in the chemical component dictionary. Similar counts are reported in the Torsion and Rings columns. '-' means no outliers of that kind were identified.

Mol	Type	Chain	Res	Link	Chirals	Torsions	Rings
3	GLA	B	2400	-	-	0/2/22/22	0/1/1/1

There are no bond length outliers.

All (5) bond angle outliers are listed below:

Mol	Chain	Res	Type	Atoms	Z	Observed(°)	Ideal(°)
3	B	2400	GLA	O5-C5-C4	3.16	115.61	109.76
3	B	2400	GLA	O3-C3-C4	-2.65	104.41	110.35
3	B	2400	GLA	O6-C6-C5	-2.22	103.71	111.36
3	B	2400	GLA	O4-C4-C3	2.13	115.14	110.35
3	B	2400	GLA	C1-O5-C5	2.06	117.09	113.40

There are no chirality outliers.

There are no torsion outliers.

There are no ring outliers.

5.7 Other polymers ⓘ

There are no such residues in this entry.

5.8 Polymer linkage issues

There are no chain breaks in this entry.

6 Fit of model and data ⓘ

6.1 Protein, DNA and RNA chains ⓘ

In the following table, the column labelled ‘#RSRZ> 2’ contains the number (and percentage) of RSRZ outliers, followed by percent RSRZ outliers for the chain as percentile scores relative to all X-ray entries and entries of similar resolution. The OWAB column contains the minimum, median, 95th percentile and maximum values of the occupancy-weighted average B-factor per residue. The column labelled ‘Q< 0.9’ lists the number of (and percentage) of residues with an average occupancy less than 0.9.

Mol	Chain	Analysed	<RSRZ>	#RSRZ>2	OWAB(Å ²)	Q<0.9
1	A	339/347 (97%)	-0.64	1 (0%) 91 92	11, 24, 55, 92	0
1	B	346/347 (99%)	-0.69	0 100 100	9, 20, 47, 62	0
All	All	685/694 (98%)	-0.67	1 (0%) 93 94	9, 22, 53, 92	0

All (1) RSRZ outliers are listed below:

Mol	Chain	Res	Type	RSRZ
1	A	340	LEU	2.9

6.2 Non-standard residues in protein, DNA, RNA chains ⓘ

There are no non-standard protein/DNA/RNA residues in this entry.

6.3 Carbohydrates ⓘ

There are no carbohydrates in this entry.

6.4 Ligands ⓘ

In the following table, the Atoms column lists the number of modelled atoms in the group and the number defined in the chemical component dictionary. LLDF column lists the quality of electron density of the group with respect to its neighbouring residues in protein, DNA or RNA chains. The B-factors column lists the minimum, median, 95th percentile and maximum values of B factors of atoms in the group. The column labelled ‘Q< 0.9’ lists the number of atoms with occupancy less than 0.9.

Mol	Type	Chain	Res	Atoms	RSR	LLDF	B-factors(Å ²)	Q<0.9
3	GLA	B	2400	12/12	0.16	11.31	38,62,100,100	0
2	GAL	A	1400[A]	1/12	0.13	9.66	51,51,51,51	1

Continued on next page...

Continued from previous page...

Mol	Type	Chain	Res	Atoms	RSR	LLDF	B-factors(\AA^2)	Q<0.9
2	GAL	A	1400[B]	1/12	0.13	7.98	69,69,69,69	1
4	NA	B	2401	1/1	0.10	5.03	21,21,21,21	0

6.5 Other polymers ⓘ

There are no such residues in this entry.