



Full wwPDB X-ray Structure Validation Report

Feb 27, 2014 – 03:39 PM GMT

PDB ID : 3NS1
Title : Crystal Structure of Bovine Xanthine Oxidase in Complex with 6-Mercaptopurine
Authors : Cao, H.; Paufl, J.M.; Hille, R.
Deposited on : 2010-07-01
Resolution : 2.60 Å(reported)

This is a full wwPDB validation report for a publicly released PDB entry.
We welcome your comments at validation@mail.wwpdb.org
A user guide is available at <http://wwpdb.org/ValidationPDFNotes.html>

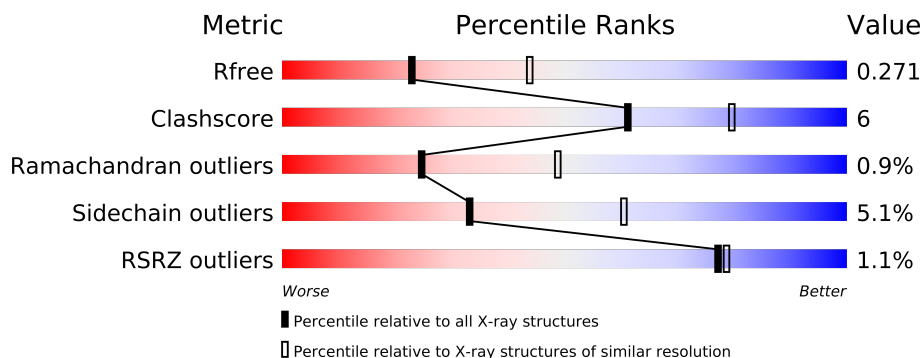
The following versions of software and data (see [references](#)) were used in the production of this report:

MolProbity : 4.02b-467
Mogul : 1.15 2013
Xtriage (Phenix) : dev-1323
EDS : stable22639
Percentile statistics : 21963
Refmac : 5.8.0049
CCP4 : 6.3.0 (Settle)
Ideal geometry (proteins) : Engh & Huber (2001)
Ideal geometry (DNA, RNA) : Parkinson et. al. (1996)
Validation Pipeline (wwPDB-VP) : stable22683

1 Overall quality at a glance

The reported resolution of this entry is 2.60 Å.

Percentile scores (ranging between 0-100) for global validation metrics of the entry are shown in the following graphic. The table shows the number of entries on which the scores are based.



Metric	Whole archive (#Entries)	Similar resolution (#Entries, resolution range(Å))
R_{free}	66092	1718 (2.60-2.60)
Clashscore	79885	2154 (2.60-2.60)
Ramachandran outliers	78287	2113 (2.60-2.60)
Sidechain outliers	78261	2113 (2.60-2.60)
RSRZ outliers	66119	1718 (2.60-2.60)

The table below summarises the geometric issues observed across the polymeric chains and their fit to the electron density. The red, orange, yellow and green segments on the lower bar indicate the fraction of residues that contain outliers for ≥ 3 , 2, 1 and 0 types of geometric quality criteria. The upper red bar (where present) indicates the fraction of residues that have poor fit to the electron density.

Mol	Chain	Length	Quality of chain
1	A	164	
1	J	164	
2	B	305	
2	K	305	
3	C	755	
3	L	755	

The following table lists non-polymeric compounds that are outliers for geometric or electron-density-fit criteria:

Mol	Type	Chain	Res	Geometry	Electron density
8	PM6	C	1	X	-
8	PM6	L	1	-	X

2 Entry composition

There are 9 unique types of molecules in this entry. The entry contains 19357 atoms, of which 0 are hydrogen and 0 are deuterium.

In the tables below, the ZeroOcc column contains the number of atoms modelled with zero occupancy, the AltConf column contains the number of residues with at least one atom in alternate conformation and the Trace column contains the number of residues modelled with at most 2 atoms.

- Molecule 1 is a protein called Xanthine dehydrogenase/oxidase.

Mol	Chain	Residues	Atoms					ZeroOcc	AltConf	Trace
1	A	164	Total	C	N	O	S	0	0	0
			1255	788	225	230	12			
1	J	164	Total	C	N	O	S	0	0	0
			1255	788	225	230	12			

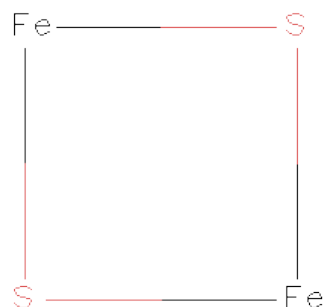
- Molecule 2 is a protein called Xanthine dehydrogenase/oxidase.

Mol	Chain	Residues	Atoms					ZeroOcc	AltConf	Trace
2	B	305	Total	C	N	O	S	0	0	0
			2389	1539	402	435	13			
2	K	305	Total	C	N	O	S	0	0	0
			2389	1539	402	435	13			

- Molecule 3 is a protein called Xanthine dehydrogenase/oxidase.

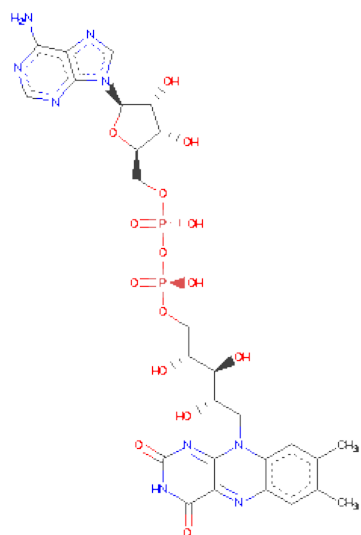
Mol	Chain	Residues	Atoms					ZeroOcc	AltConf	Trace
3	C	755	Total	C	N	O	S	0	0	0
			5823	3680	1003	1105	35			
3	L	745	Total	C	N	O	S	0	0	0
			5761	3643	992	1093	33			

- Molecule 4 is FE2/S2 (INORGANIC) CLUSTER (three-letter code: FES) (formula: Fe₂S₂).



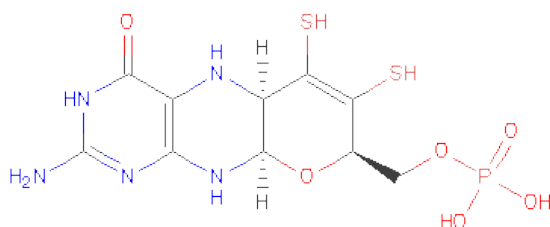
Mol	Chain	Residues	Atoms			ZeroOcc	AltConf
4	A	1	Total	Fe	S	0	0
			4	2	2		
4	A	1	Total	Fe	S	0	0
			4	2	2		
4	J	1	Total	Fe	S	0	0
			4	2	2		
4	J	1	Total	Fe	S	0	0
			4	2	2		

- Molecule 5 is FLAVIN-ADENINE DINUCLEOTIDE (three-letter code: FAD) (formula: $C_{27}H_{33}N_9O_{15}P_2$).



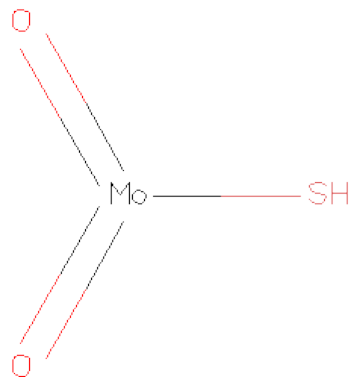
Mol	Chain	Residues	Atoms					ZeroOcc	AltConf
5	B	1	Total	C	N	O	P	0	0
			53	27	9	15	2		
5	K	1	Total	C	N	O	P	0	0
			53	27	9	15	2		

- Molecule 6 is PHOSPHONIC ACIDMONO-(2-AMINO-5,6-DIMERCAPTO-4-OXO-3,7,8A, 9,10,10A-HEXAHYDRO-4H-8-OXA-1,3,9,10-TETRAAZA-ANTHRACEN-7-YLMETHYL) ESTER (three-letter code: MTE) (formula: $C_{10}H_{14}N_5O_6PS_2$).



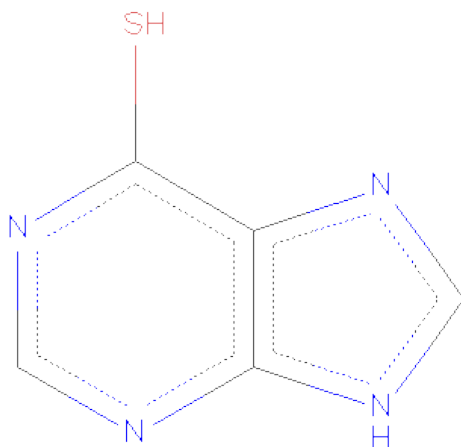
Mol	Chain	Residues	Atoms						ZeroOcc	AltConf
6	C	1	Total 24	C 10	N 5	O 6	P 1	S 2	0	0
6	L	1	Total 24	C 10	N 5	O 6	P 1	S 2	0	0

- Molecule 7 is DIOXOTHIO MOLYBDENUM(VI) ION (three-letter code: MOS) (formula: $HMoO_2S$).



Mol	Chain	Residues	Atoms				ZeroOcc	AltConf
7	C	1	Total	Mo	O	S	0	0
			4	1	2	1		
7	L	1	Total	Mo	O	S	0	0
			4	1	2	1		

- Molecule 8 is 9H-PURINE-6-THIOL (three-letter code: PM6) (formula: C₅H₄N₄S).



Mol	Chain	Residues	Atoms				ZeroOcc	AltConf
8	C	1	Total	C	N	S	0	0
			10	5	4	1		
8	L	1	Total	C	N	S	0	0
			10	5	4	1		

- Molecule 9 is water.

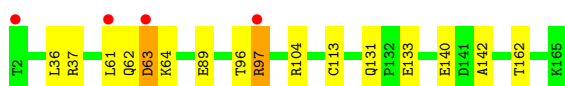
Mol	Chain	Residues	Atoms		ZeroOcc	AltConf
9	A	24	Total 24	O 24	0	0
9	B	15	Total 15	O 15	0	0
9	C	120	Total 120	O 120	0	0
9	J	14	Total 14	O 14	0	0
9	K	21	Total 21	O 21	0	0
9	L	93	Total 93	O 93	0	0

3 Residue-property plots

These plots are drawn for all protein, RNA and DNA chains in the entry. The first graphic for a chain summarises the proportions of errors displayed in the second graphic. The second graphic shows the sequence view annotated by issues in geometry and electron density. Residues are color-coded according to the number of geometric quality criteria for which they contain at least one outlier: green = 0, yellow = 1, orange = 2 and red = 3 or more. A red dot above a residue indicates a poor fit to the electron density ($RSRZ > 2$). Stretches of 2 or more consecutive residues without any outlier are shown as a green connector. Residues present in the sample, but not in the model, are shown in grey.

- Molecule 1: Xanthine dehydrogenase/oxidase

Chain A: 



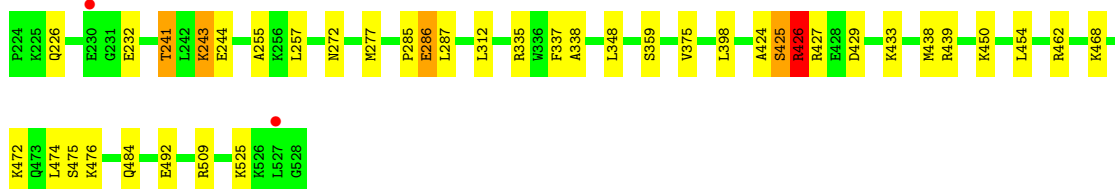
- Molecule 1: Xanthine dehydrogenase/oxidase

Chain J: 



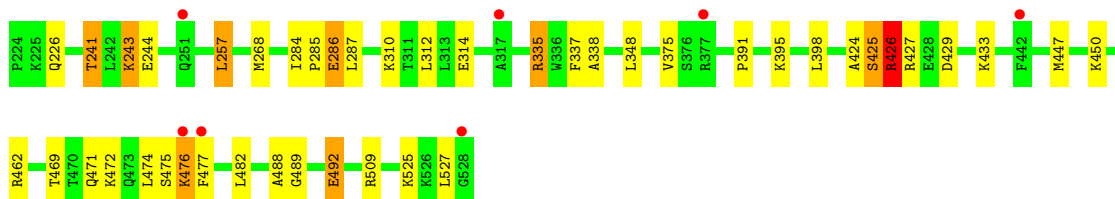
- Molecule 2: Xanthine dehydrogenase/oxidase

Chain B: 



- Molecule 2: Xanthine dehydrogenase/oxidase

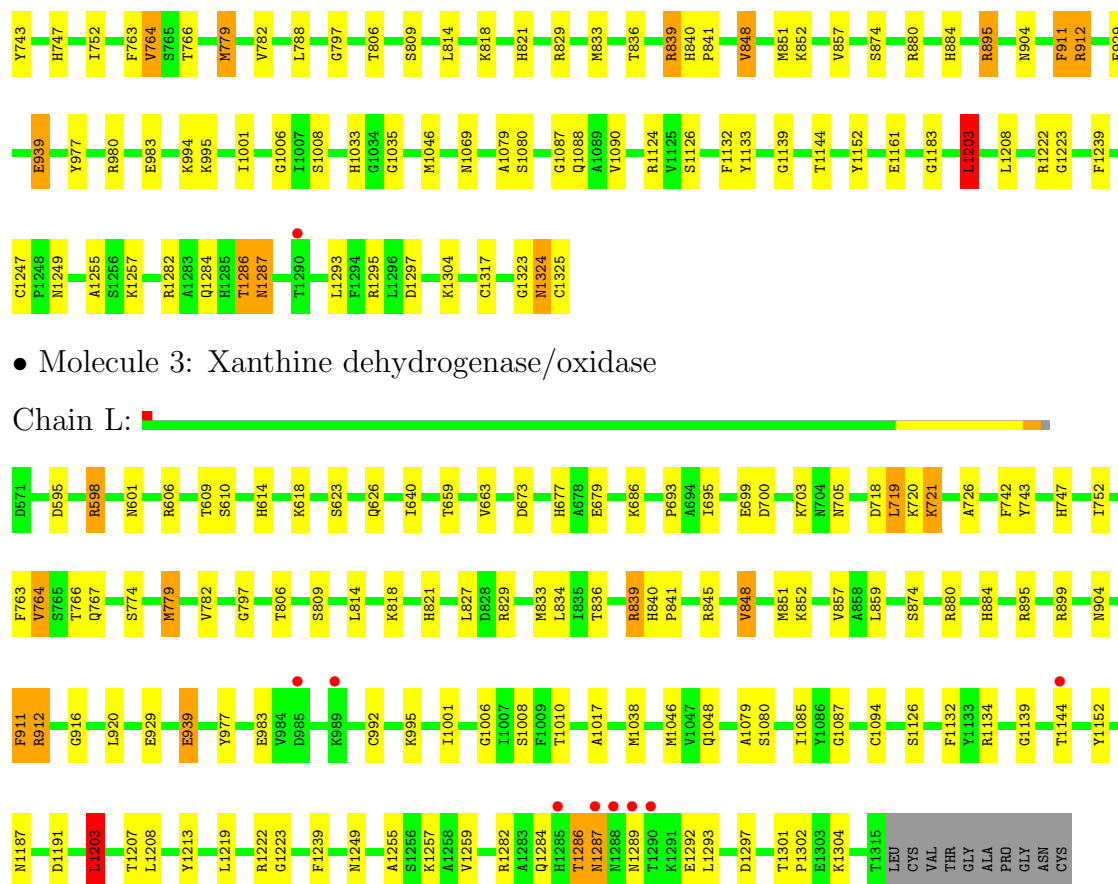
Chain K: 



- Molecule 3: Xanthine dehydrogenase/oxidase

Chain C: 





4 Data and refinement statistics

Property	Value	Source
Space group	P 1 21 1	Depositor
Cell constants a, b, c, α , β , γ	134.64Å 73.93Å 140.35Å 90.00° 97.01° 90.00°	Depositor
Resolution (Å)	45.50 – 2.60 45.52 – 2.60	Depositor EDS
% Data completeness (in resolution range)	92.4 (45.50-2.60) 92.4 (45.52-2.60)	Depositor EDS
R_{merge}	(Not available)	Depositor
R_{sym}	(Not available)	Depositor
$\langle I/\sigma(I) \rangle$ ¹	4.72 (at 2.61Å)	Xtriage
Refinement program	REFMAC 5.2.0019	Depositor
R, R_{free}	0.217 , 0.269 0.218 , 0.271	Depositor DCC
R_{free} test set	3922 reflections (5.27%)	DCC
Wilson B-factor (Å ²)	34.7	Xtriage
Anisotropy	0.079	Xtriage
Bulk solvent k_{sol} (e/Å ³), B_{sol} (Å ²)	0.37 , 20.7	EDS
Estimated twinning fraction	0.000 for l,-k,h	Xtriage
L-test for twinning	$\langle L \rangle = 0.50$, $\langle L^2 \rangle = 0.33$	Xtriage
Outliers	0 of 78349 reflections	Xtriage
F_o, F_c correlation	0.92	EDS
Total number of atoms	19357	wwPDB-VP
Average B, all atoms (Å ²)	27.0	wwPDB-VP

Xtriage's analysis on translational NCS is as follows: *The largest off-origin peak in the Patterson function is 3.52% of the height of the origin peak. No significant pseudotranslation is detected.*

¹Intensities estimated from amplitudes.

5 Model quality

5.1 Standard geometry

Bond lengths and bond angles in the following residue types are not validated in this section: MOS, PM6, FES, FAD, MTE

The Z score for a bond length (or angle) is the number of standard deviations the observed value is removed from the expected value. A bond length (or angle) with $|Z| > 5$ is considered an outlier worth inspection. RMSZ is the root-mean-square of all Z scores of the bond lengths (or angles).

Mol	Chain	Bond lengths		Bond angles	
		RMSZ	# $ Z > 5$	RMSZ	# $ Z > 5$
1	A	0.80	0/1277	0.82	2/1723 (0.1%)
1	J	0.81	0/1277	0.82	1/1723 (0.1%)
2	B	0.69	0/2438	0.77	3/3290 (0.1%)
2	K	0.74	0/2438	0.75	2/3290 (0.1%)
3	C	0.80	1/5951 (0.0%)	0.83	6/8061 (0.1%)
3	L	0.81	3/5888 (0.1%)	0.80	5/7974 (0.1%)
All	All	0.79	4/19269 (0.0%)	0.80	19/26061 (0.1%)

Chiral center outliers are detected by calculating the chiral volume of a chiral center and verifying if the center is modelled as a planar moiety or with the opposite hand. A planarity outlier is detected by checking planarity of atoms in a peptide group, atoms in a mainchain group or atoms of a sidechain that are expected to be planar.

Mol	Chain	#Chirality outliers	#Planarity outliers
3	C	0	1

All (4) bond length outliers are listed below:

Mol	Chain	Res	Type	Atoms	Z	Observed(Å)	Ideal(Å)
3	L	992	CYS	CB-SG	-6.02	1.72	1.82
3	C	699	GLU	CG-CD	5.88	1.60	1.51
3	L	699	GLU	CG-CD	5.87	1.60	1.51
3	L	1094	CYS	CB-SG	5.63	1.91	1.82

All (19) bond angle outliers are listed below:

Mol	Chain	Res	Type	Atoms	Z	Observed(°)	Ideal(°)
3	L	839	ARG	NE-CZ-NH2	-7.82	116.39	120.30
3	C	839	ARG	NE-CZ-NH2	-7.58	116.51	120.30
1	A	104	ARG	NE-CZ-NH2	-7.24	116.68	120.30

Continued on next page...

Continued from previous page...

Mol	Chain	Res	Type	Atoms	Z	Observed(°)	Ideal(°)
3	C	848	VAL	CB-CA-C	-6.99	98.13	111.40
3	L	839	ARG	NE-CZ-NH1	6.84	123.72	120.30
1	A	104	ARG	NE-CZ-NH1	6.38	123.49	120.30
3	C	1203	LEU	CA-CB-CG	6.37	129.95	115.30
2	K	398	LEU	CA-CB-CG	6.32	129.83	115.30
2	B	286	GLU	N-CA-C	-6.32	93.94	111.00
2	B	398	LEU	CA-CB-CG	6.02	129.16	115.30
1	J	104	ARG	NE-CZ-NH2	-5.93	117.33	120.30
3	C	1325	CYS	N-CA-C	5.72	126.43	111.00
2	K	286	GLU	N-CA-C	-5.57	95.98	111.00
3	L	718	ASP	CB-CG-OD2	5.39	123.15	118.30
2	B	439	ARG	NE-CZ-NH2	-5.14	117.73	120.30
3	L	719	LEU	CA-CB-CG	-5.14	103.47	115.30
3	C	895	ARG	NE-CZ-NH1	5.12	122.86	120.30
3	L	1203	LEU	CA-CB-CG	5.10	127.04	115.30
3	C	1295	ARG	NE-CZ-NH2	-5.03	117.78	120.30

There are no chirality outliers.

All (1) planarity outliers are listed below:

Mol	Chain	Res	Type	Group
3	C	1324	ASN	Peptide

5.2 Close contacts ⓘ

In the following table, the Non-H and H(model) columns list the number of non-hydrogen atoms and hydrogen atoms in the chain respectively. The H(added) column lists the number of hydrogens added by MolProbity. The Clashes column lists the number of clashes within the asymmetric unit, and the number in parentheses is this value normalized per 1000 atoms of the molecule in the chain. The Symm-Clashes column gives symmetry related clashes, in the same way as for the Clashes column.

Mol	Chain	Non-H	H(model)	H(added)	Clashes	Symm-Clashes
1	A	1255	0	1265	6	0
1	J	1255	0	1265	9	0
2	B	2389	0	2459	20	0
2	K	2389	0	2459	28	0
3	C	5823	0	5746	77	0
3	L	5761	0	5685	86	0
4	A	8	0	0	0	0
4	J	8	0	0	0	0

Continued on next page...

Continued from previous page...

Mol	Chain	Non-H	H(model)	H(added)	Clashes	Symm-Clashes
5	B	53	0	31	0	0
5	K	53	0	31	1	0
6	C	24	0	10	0	0
6	L	24	0	10	0	0
7	C	4	0	0	3	0
7	L	4	0	0	2	0
8	C	10	0	4	1	0
8	L	10	0	4	1	0
9	A	24	0	0	1	0
9	B	15	0	0	0	0
9	C	120	0	0	0	0
9	J	14	0	0	0	0
9	K	21	0	0	2	0
9	L	93	0	0	4	0
All	All	19357	0	18969	222	0

Clashscore is defined as the number of clashes calculated for the entry per 1000 atoms (including hydrogens) of the entry. The overall clashscore for this entry is 6.

All (222) close contacts within the same asymmetric unit are listed below.

Atom-1	Atom-2	Distance(Å)	Clash(Å)
2:K:241:THR:HG23	2:K:243:LYS:HD3	1.20	1.15
2:K:426:ARG:HH11	2:K:426:ARG:HG2	0.98	1.05
2:B:426:ARG:HG3	2:B:426:ARG:HH11	1.01	1.05
2:K:426:ARG:NH1	2:K:426:ARG:HG2	1.66	1.01
3:L:779:MET:HE1	3:L:814:LEU:HD13	1.45	0.98
3:C:995:LYS:HZ1	3:C:1284:GLN:NE2	1.60	0.98
3:C:995:LYS:NZ	3:C:1284:GLN:HE21	1.62	0.98
2:B:426:ARG:HG3	2:B:426:ARG:NH1	1.71	0.93
2:B:241:THR:HG22	2:B:244:GLU:H	1.34	0.92
2:K:241:THR:HG22	2:K:244:GLU:H	1.37	0.90
3:C:1046:MET:HE1	3:C:1087:GLY:HA2	1.55	0.89
2:B:243:LYS:HD3	2:B:243:LYS:H	1.37	0.88
2:B:241:THR:HG23	2:B:243:LYS:HD3	1.56	0.88
3:L:1046:MET:HE1	3:L:1087:GLY:HA2	1.58	0.85
3:C:995:LYS:HZ1	3:C:1284:GLN:HE21	0.88	0.85
3:L:995:LYS:NZ	3:L:1284:GLN:NE2	2.25	0.85
3:L:995:LYS:NZ	3:L:1284:GLN:HE21	1.74	0.84
3:C:726:ALA:HA	3:C:851:MET:HE2	1.60	0.84
3:L:779:MET:CE	3:L:814:LEU:HD13	2.08	0.84
3:L:720:LYS:O	3:L:721:LYS:CB	2.25	0.82
3:L:995:LYS:HZ3	3:L:1284:GLN:NE2	1.78	0.81

Continued on next page...

Continued from previous page...

Atom-1	Atom-2	Distance(Å)	Clash(Å)
3:L:995:LYS:HZ3	3:L:1284:GLN:HE21	1.28	0.79
1:A:131:GLN:HE21	1:A:133:GLU:H	1.27	0.79
3:L:610:SER:O	3:L:663:VAL:O	2.02	0.78
2:K:426:ARG:HH11	2:K:426:ARG:CG	1.90	0.77
2:K:241:THR:CG2	2:K:243:LYS:HD3	2.09	0.77
3:C:695:ILE:H	3:C:904:ASN:HD22	1.32	0.76
3:L:623:SER:HA	3:L:626:GLN:HE21	1.50	0.76
2:K:286:GLU:O	2:K:287:LEU:HB2	1.86	0.75
3:C:995:LYS:NZ	3:C:1284:GLN:NE2	2.26	0.74
3:C:884:HIS:HE1	3:C:1006:GLY:H	1.36	0.73
3:C:720:LYS:O	3:C:721:LYS:CB	2.36	0.72
3:L:695:ILE:H	3:L:904:ASN:HD22	1.38	0.71
3:C:610:SER:O	3:C:663:VAL:O	2.08	0.71
2:K:243:LYS:HD3	2:K:243:LYS:H	1.56	0.70
3:C:623:SER:HA	3:C:626:GLN:HE21	1.56	0.70
3:L:640:ILE:HG23	3:L:779:MET:HE2	1.74	0.69
2:B:426:ARG:CG	2:B:426:ARG:HH11	1.91	0.69
3:L:726:ALA:HA	3:L:851:MET:HE2	1.73	0.69
2:K:243:LYS:CD	2:K:243:LYS:H	2.06	0.69
3:C:779:MET:CE	3:C:814:LEU:HD13	2.22	0.69
3:C:779:MET:HE1	3:C:814:LEU:HD13	1.74	0.69
3:C:829:ARG:HG3	3:C:833:MET:HE2	1.75	0.69
3:L:829:ARG:HG3	3:L:833:MET:HE2	1.75	0.69
2:B:285:PRO:O	2:B:286:GLU:HB2	1.94	0.67
3:L:829:ARG:CG	3:L:833:MET:HE2	2.25	0.67
3:L:833:MET:HE3	3:L:1222:ARG:O	1.95	0.66
2:B:243:LYS:CD	2:B:243:LYS:H	2.08	0.66
1:J:131:GLN:HE21	1:J:133:GLU:H	1.43	0.65
3:L:720:LYS:O	3:L:721:LYS:HB2	1.98	0.64
2:B:286:GLU:O	2:B:287:LEU:HB2	1.98	0.64
3:C:1046:MET:HE1	3:C:1087:GLY:CA	2.28	0.62
3:L:884:HIS:HE1	3:L:1006:GLY:H	1.48	0.62
3:C:884:HIS:CE1	3:C:1006:GLY:H	2.17	0.62
3:C:880:ARG:O	3:C:884:HIS:HD2	1.81	0.62
3:L:720:LYS:O	3:L:721:LYS:HB3	1.98	0.62
3:L:1152:TYR:CE1	3:L:1257:LYS:HG2	2.34	0.62
7:C:1327:MOS:O2	7:C:1327:MOS:MO	1.72	0.61
2:B:285:PRO:O	2:B:286:GLU:CB	2.48	0.61
3:L:995:LYS:HZ1	3:L:1284:GLN:NE2	1.99	0.61
7:L:1327:MOS:MO	7:L:1327:MOS:O2	1.72	0.60
2:B:272:ASN:ND2	3:C:683:HIS:CE1	2.69	0.60
3:L:764:VAL:HG22	3:L:766:THR:HG22	1.82	0.60

Continued on next page...

Continued from previous page...

Atom-1	Atom-2	Distance(Å)	Clash(Å)
3:L:833:MET:HE3	3:L:1222:ARG:C	2.21	0.60
3:L:1287:ASN:C	3:L:1287:ASN:HD22	2.05	0.60
3:L:880:ARG:O	3:L:884:HIS:HD2	1.84	0.60
3:L:623:SER:HA	3:L:626:GLN:NE2	2.16	0.60
2:B:474:LEU:O	2:B:475:SER:HB2	2.01	0.59
3:C:829:ARG:CG	3:C:833:MET:HE2	2.32	0.59
3:C:1282:ARG:HA	3:C:1286:THR:HG23	1.84	0.59
3:L:673:ASP:OD2	3:L:677:HIS:HD2	1.85	0.59
3:L:1079:ALA:O	3:L:1080:SER:HB2	2.03	0.58
3:C:764:VAL:HG22	3:C:766:THR:HG22	1.85	0.58
3:L:1046:MET:HE1	3:L:1087:GLY:CA	2.32	0.58
3:C:939:GLU:HG2	3:C:977:TYR:CE2	2.38	0.58
3:L:840:HIS:HE1	3:L:874:SER:OG	1.86	0.57
3:L:1191:ASP:OD2	9:L:168:HOH:O	2.17	0.57
3:L:1282:ARG:O	3:L:1286:THR:HG23	2.03	0.57
3:L:747:HIS:CD2	3:L:836:THR:HG21	2.39	0.56
3:L:939:GLU:HG2	3:L:977:TYR:CE2	2.41	0.56
3:L:851:MET:HE3	3:L:857:VAL:HG21	1.87	0.56
3:C:752:ILE:CD1	3:C:763:PHE:HE1	2.19	0.56
1:A:37:ARG:HD3	3:C:595:ASP:O	2.06	0.56
3:C:833:MET:HE3	3:C:1222:ARG:O	2.05	0.56
1:A:36:LEU:HD22	1:A:89:GLU:HG3	1.88	0.55
2:K:285:PRO:O	2:K:286:GLU:CB	2.54	0.55
3:L:598:ARG:NH2	9:L:509:HOH:O	2.41	0.54
3:L:752:ILE:CD1	3:L:763:PHE:HE1	2.21	0.54
3:L:848:VAL:HG13	3:L:859:LEU:HD13	1.90	0.54
3:C:1126:SER:HB2	3:L:1132:PHE:CD1	2.42	0.54
3:L:601:ASN:HB2	3:L:821:HIS:CD2	2.44	0.53
3:L:767:GLN:HG2	3:L:1038:MET:HE2	1.91	0.53
3:C:833:MET:HE3	3:C:1222:ARG:C	2.29	0.52
3:C:840:HIS:HE1	3:C:874:SER:OG	1.92	0.52
2:B:285:PRO:C	2:B:286:GLU:O	2.43	0.52
7:C:1327:MOS:O1	8:C:1:PM6:H8	2.08	0.52
3:C:720:LYS:O	3:C:721:LYS:HB2	2.08	0.52
2:K:476:LYS:HG2	2:K:477:PHE:H	1.75	0.52
3:C:640:ILE:HG12	3:C:779:MET:HE3	1.91	0.52
3:C:1033:HIS:HD2	3:C:1035:GLY:H	1.58	0.51
3:C:614:HIS:HD2	3:C:693:PRO:O	1.93	0.51
2:K:450:LYS:O	2:K:474:LEU:HD22	2.11	0.51
3:C:833:MET:HE1	3:C:1223:GLY:HA2	1.92	0.51
2:K:474:LEU:O	2:K:475:SER:HB2	2.10	0.51
3:C:1297:ASP:HB2	3:C:1304:LYS:HE2	1.93	0.51

Continued on next page...

Continued from previous page...

Atom-1	Atom-2	Distance(Å)	Clash(Å)
3:L:806:THR:HA	3:L:809:SER:HB2	1.92	0.51
2:K:426:ARG:CG	2:K:426:ARG:NH1	2.52	0.51
3:C:640:ILE:HG23	3:C:779:MET:HE2	1.92	0.51
3:L:1282:ARG:NH2	3:L:1292:GLU:OE2	2.36	0.51
3:C:720:LYS:O	3:C:721:LYS:HB3	2.09	0.51
3:L:884:HIS:CE1	3:L:1006:GLY:H	2.28	0.50
3:L:614:HIS:HD2	3:L:693:PRO:O	1.93	0.50
3:L:833:MET:CE	3:L:1222:ARG:C	2.80	0.50
3:L:833:MET:HE1	3:L:1223:GLY:HA2	1.93	0.50
3:L:752:ILE:HD12	3:L:763:PHE:HE1	1.77	0.50
3:L:1297:ASP:HB2	3:L:1304:LYS:HE2	1.94	0.50
1:J:99:HIS:CG	1:J:100:PRO:HD2	2.47	0.49
2:B:438:MET:HG2	2:B:454:LEU:HD22	1.94	0.49
2:K:285:PRO:O	2:K:286:GLU:HB2	2.11	0.49
2:K:425:SER:O	2:K:426:ARG:CB	2.60	0.49
3:L:1048:GLN:HE22	3:L:1187:ASN:HD22	1.60	0.49
3:L:1282:ARG:HA	3:L:1286:THR:HG23	1.94	0.49
2:B:232:GLU:OE2	3:C:677:HIS:HE1	1.96	0.49
3:C:673:ASP:OD2	3:C:677:HIS:HD2	1.96	0.49
3:L:829:ARG:HG2	3:L:833:MET:HE2	1.95	0.49
3:C:641:PRO:HD2	3:C:779:MET:HE1	1.95	0.48
3:C:684:VAL:O	3:C:684:VAL:HG13	2.13	0.48
3:L:911:PHE:HD2	3:L:912:ARG:N	2.11	0.48
3:L:1249:ASN:O	3:L:1255:ALA:HA	2.14	0.48
3:C:1124:ARG:HB3	3:L:1134:ARG:HG3	1.96	0.48
3:C:747:HIS:CD2	3:C:836:THR:HG21	2.49	0.48
3:C:601:ASN:HB2	3:C:821:HIS:CD2	2.48	0.48
3:C:851:MET:HE3	3:C:857:VAL:HG21	1.95	0.48
3:C:1249:ASN:O	3:C:1255:ALA:HA	2.14	0.48
3:C:1046:MET:HE3	3:C:1090:VAL:HG21	1.96	0.47
3:C:839:ARG:O	3:C:841:PRO:HD3	2.14	0.47
3:C:779:MET:HE3	3:C:814:LEU:HD13	1.95	0.47
1:J:74:LEU:O	1:J:76:PRO:HD3	2.15	0.47
2:B:272:ASN:CG	3:C:683:HIS:NE2	2.68	0.47
3:C:1183:GLY:HA2	3:C:1247:CYS:O	2.14	0.47
1:J:62:GLN:O	1:J:63:ASP:HB3	2.13	0.47
3:C:1079:ALA:O	3:C:1080:SER:HB2	2.14	0.47
2:K:469:THR:HG23	2:K:489:GLY:HA3	1.97	0.47
3:L:839:ARG:O	3:L:841:PRO:HD3	2.15	0.47
2:B:425:SER:O	2:B:426:ARG:HB2	2.13	0.47
3:C:806:THR:HA	3:C:809:SER:HB2	1.96	0.47
3:C:623:SER:HA	3:C:626:GLN:NE2	2.28	0.47

Continued on next page...

Continued from previous page...

Atom-1	Atom-2	Distance(Å)	Clash(Å)
3:C:719:LEU:CD1	3:C:895:ARG:HB2	2.45	0.46
3:L:1213:TYR:CE2	3:L:1219:LEU:HD13	2.50	0.46
3:C:1152:TYR:CE1	3:C:1257:LYS:HG2	2.50	0.46
2:K:257:LEU:O	5:K:606:FAD:H2B	2.16	0.46
3:L:695:ILE:H	3:L:904:ASN:ND2	2.10	0.46
3:C:1317:CYS:SG	3:C:1323:GLY:HA3	2.56	0.46
3:C:719:LEU:HD11	3:C:895:ARG:HB2	1.97	0.46
3:C:1126:SER:HB2	3:L:1132:PHE:CE1	2.51	0.45
3:L:606:ARG:HD3	3:L:679:GLU:HA	1.98	0.45
3:L:1203:LEU:O	3:L:1207:THR:OG1	2.32	0.45
2:B:474:LEU:O	2:B:475:SER:CB	2.65	0.45
3:L:601:ASN:HB2	3:L:821:HIS:HD2	1.80	0.45
2:K:268:MET:HE1	9:K:536:HOH:O	2.15	0.45
1:A:142:ALA:HB1	9:A:174:HOH:O	2.15	0.45
3:C:740:ASP:OD2	3:C:833:MET:HG2	2.17	0.45
2:K:471:GLN:NE2	2:K:474:LEU:HD12	2.31	0.45
3:C:1282:ARG:O	3:C:1286:THR:HG23	2.17	0.45
3:C:911:PHE:HD2	3:C:912:ARG:N	2.15	0.45
2:K:310:LYS:HE3	2:K:314:GLU:OE2	2.17	0.45
3:L:833:MET:CE	3:L:1222:ARG:O	2.63	0.45
3:L:1203:LEU:C	3:L:1203:LEU:HD12	2.38	0.45
3:C:788:LEU:HD13	3:C:1069:ASN:HB3	1.99	0.45
2:K:391:PRO:HD2	2:K:395:LYS:O	2.17	0.44
3:L:1301:THR:HB	3:L:1302:PRO:HD2	1.98	0.44
3:L:845:ARG:HD2	9:L:1347:HOH:O	2.17	0.44
3:C:1132:PHE:CD1	3:L:1126:SER:HB2	2.53	0.44
3:C:1282:ARG:HA	3:C:1286:THR:CG2	2.47	0.44
3:L:840:HIS:CE1	3:L:874:SER:OG	2.70	0.44
3:C:726:ALA:HA	3:C:851:MET:CE	2.37	0.44
3:C:1287:ASN:HD22	3:C:1287:ASN:C	2.21	0.44
3:L:726:ALA:HA	3:L:851:MET:CE	2.43	0.44
2:K:447:MET:HG2	2:K:527:LEU:HD13	2.00	0.43
1:J:63:ASP:OD1	1:J:63:ASP:C	2.57	0.43
3:C:880:ARG:O	3:C:884:HIS:CD2	2.68	0.43
2:K:268:MET:CE	9:K:536:HOH:O	2.67	0.43
3:L:719:LEU:CD1	3:L:895:ARG:HB2	2.48	0.43
3:C:1088:GLN:HG2	3:C:1133:TYR:CD1	2.53	0.43
3:L:1287:ASN:ND2	3:L:1289:ASN:H	2.17	0.43
3:C:1203:LEU:HD12	3:C:1203:LEU:C	2.38	0.43
1:J:36:LEU:HD22	1:J:89:GLU:HG3	1.99	0.43
3:C:980:ARG:NH1	3:C:1161:GLU:OE1	2.52	0.43
3:L:880:ARG:O	3:L:884:HIS:CD2	2.69	0.43

Continued on next page...

Continued from previous page...

Atom-1	Atom-2	Distance(Å)	Clash(Å)
1:A:62:GLN:O	1:A:63:ASP:HB3	2.18	0.43
3:L:601:ASN:O	3:L:821:HIS:HD2	2.02	0.43
7:L:1327:MOS:S	7:L:1327:MOS:O2	2.77	0.42
3:L:829:ARG:HG2	3:L:833:MET:CE	2.50	0.42
3:L:827:LEU:HA	9:L:1338:HOH:O	2.19	0.42
3:C:605:LEU:C	3:C:605:LEU:HD23	2.39	0.42
3:L:929:GLU:HG2	3:L:1293:LEU:HD22	2.01	0.42
3:C:752:ILE:HD12	3:C:763:PHE:HE1	1.85	0.42
3:L:700:ASP:HA	3:L:703:LYS:HE3	2.01	0.42
3:L:1010:THR:HG23	8:L:1:PM6:S6	2.59	0.42
3:L:1191:ASP:OD1	3:L:1259:VAL:HG11	2.20	0.42
1:A:96:THR:OG1	1:A:97:ARG:N	2.52	0.42
2:B:255:ALA:HB2	2:B:277:MET:HG2	2.02	0.41
3:C:596:ILE:HA	3:C:597:PRO:HD3	1.95	0.41
2:K:243:LYS:CD	2:K:243:LYS:N	2.80	0.41
2:K:284:ILE:HB	2:K:287:LEU:HD12	2.02	0.41
1:J:37:ARG:HD3	3:L:595:ASP:O	2.20	0.41
1:J:49:GLY:C	1:J:51:CYS:H	2.22	0.41
3:C:994:LYS:O	3:C:995:LYS:HD3	2.20	0.41
1:J:49:GLY:C	1:J:51:CYS:N	2.74	0.41
2:B:450:LYS:O	2:B:474:LEU:HD22	2.20	0.41
3:L:752:ILE:HD12	3:L:763:PHE:CE1	2.56	0.41
3:L:719:LEU:HD11	3:L:895:ARG:HB2	2.03	0.41
3:L:663:VAL:HG12	3:L:834:LEU:HD11	2.03	0.41
3:L:764:VAL:HG22	3:L:766:THR:CG2	2.50	0.41
3:L:916:GLY:O	3:L:920:LEU:HG	2.19	0.41
3:L:1017:ALA:HB2	3:L:1085:ILE:HD12	2.03	0.41
7:C:1327:MOS:S	7:C:1327:MOS:O2	2.79	0.40
3:C:929:GLU:HG2	3:C:1293:LEU:HD22	2.03	0.40
3:C:684:VAL:O	3:C:684:VAL:CG1	2.69	0.40
2:K:476:LYS:HG2	2:K:477:PHE:N	2.36	0.40
2:K:488:ALA:O	2:K:492:GLU:HB2	2.22	0.40
3:C:606:ARG:HD3	3:C:679:GLU:HA	2.03	0.40

There are no symmetry-related clashes.

5.3 Torsion angles

5.3.1 Protein backbone ⓘ

In the following table, the Percentiles column shows the percent Ramachandran outliers of the chain as a percentile score with respect to all X-ray entries followed by that with respect to entries

of similar resolution. The Analysed column shows the number of residues for which the backbone conformation was analysed, and the total number of residues.

Mol	Chain	Analysed	Favoured	Allowed	Outliers	Percentiles	
1	A	162/164 (99%)	152 (94%)	9 (6%)	1 (1%)	33	63
1	J	162/164 (99%)	152 (94%)	9 (6%)	1 (1%)	33	63
2	B	303/305 (99%)	280 (92%)	19 (6%)	4 (1%)	18	35
2	K	303/305 (99%)	279 (92%)	19 (6%)	5 (2%)	14	26
3	C	753/755 (100%)	723 (96%)	25 (3%)	5 (1%)	30	58
3	L	743/755 (98%)	705 (95%)	33 (4%)	5 (1%)	30	58
All	All	2426/2448 (99%)	2291 (94%)	114 (5%)	21 (1%)	25	49

All (21) Ramachandran outliers are listed below:

Mol	Chain	Res	Type
3	C	721	LYS
3	C	1008	SER
2	K	426	ARG
3	L	721	LYS
3	L	1008	SER
2	B	338	ALA
2	B	426	ARG
3	L	1139	GLY
3	C	912	ARG
2	K	424	ALA
2	K	425	SER
2	B	424	ALA
2	B	425	SER
2	K	338	ALA
3	L	797	GLY
3	L	912	ARG
1	A	61	LEU
3	C	797	GLY
1	J	61	LEU
2	K	335	ARG
3	C	1139	GLY

5.3.2 Protein sidechains ⓘ

In the following table, the Percentiles column shows the percent sidechain outliers of the chain as a percentile score with respect to all X-ray entries followed by that with respect to entries of similar resolution. The Analysed column shows the number of residues for which the sidechain

conformation was analysed, and the total number of residues.

Mol	Chain	Analysed	Rotameric	Outliers	Percentiles	
1	A	137/137 (100%)	131 (96%)	6 (4%)	39	68
1	J	137/137 (100%)	131 (96%)	6 (4%)	39	68
2	B	261/261 (100%)	239 (92%)	22 (8%)	16	29
2	K	261/261 (100%)	241 (92%)	20 (8%)	18	35
3	C	631/631 (100%)	606 (96%)	25 (4%)	42	73
3	L	624/631 (99%)	598 (96%)	26 (4%)	40	71
All	All	2051/2058 (100%)	1946 (95%)	105 (5%)	33	60

All (105) residues with a non-rotameric sidechain are listed below:

Mol	Chain	Res	Type
1	A	63	ASP
1	A	64	LYS
1	A	97	ARG
1	A	113	CYS
1	A	140	GLU
1	A	162	THR
2	B	226	GLN
2	B	241	THR
2	B	243	LYS
2	B	257	LEU
2	B	312	LEU
2	B	335	ARG
2	B	337	PHE
2	B	348	LEU
2	B	359	SER
2	B	375	VAL
2	B	426	ARG
2	B	427	ARG
2	B	429	ASP
2	B	433	LYS
2	B	462	ARG
2	B	468	LYS
2	B	472	LYS
2	B	476	LYS
2	B	484	GLN
2	B	492	GLU
2	B	509	ARG
2	B	525	LYS

Continued on next page...

Continued from previous page...

Mol	Chain	Res	Type
3	C	598	ARG
3	C	609	THR
3	C	618	LYS
3	C	659	THR
3	C	686	LYS
3	C	705	ASN
3	C	742	PHE
3	C	743	TYR
3	C	764	VAL
3	C	779	MET
3	C	782	VAL
3	C	818	LYS
3	C	848	VAL
3	C	852	LYS
3	C	911	PHE
3	C	939	GLU
3	C	983	GLU
3	C	1001	ILE
3	C	1144	THR
3	C	1203	LEU
3	C	1208	LEU
3	C	1239	PHE
3	C	1286	THR
3	C	1287	ASN
3	C	1324	ASN
1	J	63	ASP
1	J	64	LYS
1	J	97	ARG
1	J	113	CYS
1	J	140	GLU
1	J	162	THR
2	K	226	GLN
2	K	241	THR
2	K	243	LYS
2	K	257	LEU
2	K	312	LEU
2	K	335	ARG
2	K	337	PHE
2	K	348	LEU
2	K	375	VAL
2	K	426	ARG
2	K	427	ARG

Continued on next page...

Continued from previous page...

Mol	Chain	Res	Type
2	K	429	ASP
2	K	433	LYS
2	K	462	ARG
2	K	472	LYS
2	K	476	LYS
2	K	482	LEU
2	K	492	GLU
2	K	509	ARG
2	K	525	LYS
3	L	598	ARG
3	L	609	THR
3	L	618	LYS
3	L	659	THR
3	L	686	LYS
3	L	705	ASN
3	L	742	PHE
3	L	743	TYR
3	L	764	VAL
3	L	774	SER
3	L	779	MET
3	L	782	VAL
3	L	818	LYS
3	L	848	VAL
3	L	852	LYS
3	L	899	ARG
3	L	911	PHE
3	L	939	GLU
3	L	983	GLU
3	L	1001	ILE
3	L	1144	THR
3	L	1203	LEU
3	L	1208	LEU
3	L	1239	PHE
3	L	1286	THR
3	L	1287	ASN

Some sidechains can be flipped to improve hydrogen bonding and reduce clashes. All (34) such sidechains are listed below:

Mol	Chain	Res	Type
1	A	131	GLN
1	A	146	ASN
2	B	272	ASN

Continued on next page...

Continued from previous page...

Mol	Chain	Res	Type
2	B	351	ASN
2	B	471	GLN
3	C	614	HIS
3	C	626	GLN
3	C	677	HIS
3	C	728	ASN
3	C	821	HIS
3	C	840	HIS
3	C	884	HIS
3	C	904	ASN
3	C	1033	HIS
3	C	1048	GLN
3	C	1284	GLN
3	C	1287	ASN
1	J	131	GLN
2	K	351	ASN
2	K	471	GLN
3	L	614	HIS
3	L	626	GLN
3	L	677	HIS
3	L	728	ASN
3	L	821	HIS
3	L	840	HIS
3	L	884	HIS
3	L	904	ASN
3	L	1033	HIS
3	L	1048	GLN
3	L	1122	GLN
3	L	1284	GLN
3	L	1285	HIS
3	L	1287	ASN

5.3.3 RNA ⓘ

There are no RNA chains in this entry.

5.4 Non-standard residues in protein, DNA, RNA chains ⓘ

There are no non-standard protein/DNA/RNA residues in this entry.

5.5 Carbohydrates ⓘ

There are no carbohydrates in this entry.

5.6 Ligand geometry ⓘ

12 ligands are modelled in this entry.

In the following table, the Counts columns list the number of bonds (or angles) for which Mogul statistics could be retrieved, the number of bonds (or angles) that are observed in the model and the number of bonds (or angles) that are defined in the chemical component dictionary. The Link column lists molecule types, if any, to which the group is linked. The Z score for a bond length (or angle) is the number of standard deviations the observed value is removed from the expected value. A bond length (or angle) with $|Z| > 2$ is considered an outlier worth inspection. RMSZ is the root-mean-square of all Z scores of the bond lengths (or angles).

Mol	Type	Chain	Res	Link	Bond lengths			Bond angles		
					Counts	RMSZ	# $ Z > 2$	Counts	RMSZ	# $ Z > 2$
4	FES	A	601	1	0,4,4	0.00	-	0,4,4	0.00	-
4	FES	A	602	1	0,4,4	0.00	-	0,4,4	0.00	-
5	FAD	B	606	-	58,58,58	1.30	8 (13%)	85,89,89	2.25	20 (23%)
8	PM6	C	1	-	11,11,11	2.79	6 (54%)	15,15,15	3.84	7 (46%)
6	MTE	C	1326	7	26,26,26	1.91	2 (7%)	34,40,40	1.88	10 (29%)
7	MOS	C	1327	6	0,3,3	0.00	-	0,3,3	0.00	-
4	FES	J	601	1	0,4,4	0.00	-	0,4,4	0.00	-
4	FES	J	602	1	0,4,4	0.00	-	0,4,4	0.00	-
5	FAD	K	606	-	58,58,58	1.12	4 (6%)	85,89,89	2.04	16 (18%)
8	PM6	L	1	-	11,11,11	2.59	5 (45%)	15,15,15	4.22	6 (40%)
6	MTE	L	1326	7	26,26,26	1.90	4 (15%)	34,40,40	2.22	11 (32%)
7	MOS	L	1327	6	0,3,3	0.00	-	0,3,3	0.00	-

In the following table, the Chirals column lists the number of chiral outliers, the number of chiral centers analysed, the number of these observed in the model and the number defined in the chemical component dictionary. Similar counts are reported in the Torsion and Rings columns. '-' means no outliers of that kind were identified.

Mol	Type	Chain	Res	Link	Chirals	Torsions	Rings
4	FES	A	601	1	-	0/0/4/4	0/0/1/1
4	FES	A	602	1	-	0/0/4/4	0/0/1/1
5	FAD	B	606	-	-	0/34/50/50	0/1/6/6
8	PM6	C	1	-	-	0/0/0/0	0/0/2/2
6	MTE	C	1326	7	-	0/6/34/34	0/0/3/3
7	MOS	C	1327	6	-	0/0/0/0	0/0/0/0

Continued on next page...

Continued from previous page...

Mol	Type	Chain	Res	Link	Chirals	Torsions	Rings
4	FES	J	601	1	-	0/0/4/4	0/0/1/1
4	FES	J	602	1	-	0/0/4/4	0/0/1/1
5	FAD	K	606	-	-	0/34/50/50	0/1/6/6
8	PM6	L	1	-	-	0/0/0/0	0/0/2/2
6	MTE	L	1326	7	-	0/6/34/34	0/0/3/3
7	MOS	L	1327	6	-	0/0/0/0	0/0/0/0

All (29) bond length outliers are listed below:

Mol	Chain	Res	Type	Atoms	Z	Observed(Å)	Ideal(Å)
6	C	1326	MTE	C9-C10	7.23	1.52	1.41
8	C	1	PM6	C6-C5	6.59	1.49	1.43
6	L	1326	MTE	C4-C9	5.86	1.52	1.41
6	L	1326	MTE	C9-C10	5.64	1.49	1.41
8	L	1	PM6	C6-C5	5.60	1.48	1.43
6	C	1326	MTE	C4-C9	5.22	1.50	1.41
5	B	606	FAD	C1'-N10	3.43	1.52	1.48
8	L	1	PM6	C5-C4	3.35	1.48	1.40
5	K	606	FAD	C2A-N3A	3.19	1.38	1.32
8	C	1	PM6	C5-C4	3.13	1.47	1.40
5	B	606	FAD	P-O3P	2.98	1.65	1.59
6	L	1326	MTE	C2-N1	2.95	1.37	1.33
5	B	606	FAD	C2A-N3A	2.89	1.37	1.32
5	K	606	FAD	C2A-N1A	2.83	1.39	1.33
5	B	606	FAD	C2A-N1A	2.82	1.39	1.33
6	L	1326	MTE	C2-N2	2.80	1.36	1.32
8	C	1	PM6	C8-N9	2.77	1.39	1.34
8	L	1	PM6	C8-N9	2.74	1.38	1.34
8	C	1	PM6	C2-N3	2.72	1.37	1.32
5	B	606	FAD	C1'-C2'	2.60	1.54	1.51
5	B	606	FAD	C2B-C1B	-2.35	1.50	1.53
8	L	1	PM6	C2-N3	2.34	1.36	1.32
8	L	1	PM6	C6-S6	-2.32	1.59	1.76
5	K	606	FAD	C5X-N5	2.28	1.38	1.35
5	K	606	FAD	C1'-N10	2.25	1.50	1.48
8	C	1	PM6	C6-S6	-2.25	1.60	1.76
8	C	1	PM6	C6-N1	2.22	1.37	1.34
5	B	606	FAD	PA-O3P	2.18	1.63	1.59
5	B	606	FAD	C9A-N10	2.06	1.41	1.38

All (70) bond angle outliers are listed below:

Mol	Chain	Res	Type	Atoms	Z	Observed(°)	Ideal(°)
5	B	606	FAD	N3A-C2A-N1A	-13.38	117.52	128.71
8	L	1	PM6	C5-C6-N1	-12.96	119.33	121.07
8	C	1	PM6	C5-C6-N1	-12.03	119.45	121.07
5	K	606	FAD	N3A-C2A-N1A	-11.12	119.41	128.71
8	L	1	PM6	N3-C2-N1	-7.42	122.50	128.71
6	L	1326	MTE	C4'-C3'-C2'	-6.28	103.57	110.98
8	C	1	PM6	N3-C2-N1	-5.43	124.17	128.71
5	B	606	FAD	C5X-C9A-N10	4.99	121.71	116.80
5	K	606	FAD	C2-N1-C10	4.98	120.00	114.98
5	B	606	FAD	C2-N1-C10	4.82	119.84	114.98
5	K	606	FAD	C1'-N10-C9A	4.69	123.44	118.87
5	B	606	FAD	C4X-C10-N1	-4.53	118.20	122.73
6	C	1326	MTE	C4'-C3'-C2'	-4.42	105.76	110.98
5	B	606	FAD	O4B-C1B-N9A	-4.28	104.46	108.44
6	L	1326	MTE	C4-C9-N5	4.21	125.22	119.10
6	L	1326	MTE	C2-N1-C10	3.71	122.89	117.61
5	B	606	FAD	C9A-N10-C10	-3.71	118.12	121.77
5	K	606	FAD	C4-N3-C2	-3.68	117.85	125.39
6	L	1326	MTE	N2-C2-N3	3.65	121.88	117.86
5	K	606	FAD	C2'-C1'-N10	-3.60	107.67	112.45
5	B	606	FAD	C1'-N10-C9A	3.60	122.37	118.87
6	C	1326	MTE	C10-N8-C7	-3.59	117.67	124.01
6	C	1326	MTE	N8-C10-N1	3.51	122.02	116.51
5	B	606	FAD	N3A-C4A-N9A	3.48	131.71	125.43
5	K	606	FAD	C4X-N5-C5X	3.41	120.53	116.69
5	K	606	FAD	N3A-C4A-N9A	3.28	131.36	125.43
8	L	1	PM6	N9-C4-N3	3.19	131.00	125.34
5	K	606	FAD	O4'-C4'-C3'	3.15	116.89	109.05
8	C	1	PM6	C5-C4-N3	-3.12	121.41	125.94
5	K	606	FAD	C4X-C10-N1	-3.12	119.61	122.73
5	B	606	FAD	C4X-N5-C5X	3.09	120.16	116.69
5	B	606	FAD	C4-N3-C2	-3.06	119.12	125.39
6	L	1326	MTE	N2-C2-N1	-3.03	116.21	120.31
8	C	1	PM6	C4-C5-N7	-2.95	107.06	109.93
6	C	1326	MTE	C4-C9-N5	2.95	123.39	119.10
5	K	606	FAD	C5X-C9A-N10	2.93	119.69	116.80
5	B	606	FAD	C6-C5X-C9A	2.91	123.05	119.02
6	C	1326	MTE	N3-C2-N1	2.84	125.76	121.78
6	L	1326	MTE	C10-N8-C7	-2.83	119.02	124.01
8	L	1	PM6	C5-C4-N3	-2.82	121.85	125.94
5	K	606	FAD	O3'-C3'-C2'	-2.81	101.64	108.74
6	L	1326	MTE	N8-C10-N1	2.70	120.75	116.51
8	C	1	PM6	N9-C4-N3	2.68	130.10	125.34

Continued on next page...

Continued from previous page...

Mol	Chain	Res	Type	Atoms	Z	Observed(°)	Ideal(°)
6	C	1326	MTE	O2P-P-O4'	-2.65	99.35	106.65
5	B	606	FAD	C4X-C10-N10	-2.64	119.19	120.51
5	B	606	FAD	C4-C4X-C10	2.64	121.21	116.95
6	C	1326	MTE	C4-C9-C10	2.57	116.94	114.56
5	B	606	FAD	N1-C10-N10	2.52	122.61	115.97
5	B	606	FAD	C8M-C8-C9	-2.50	114.35	120.38
6	C	1326	MTE	O2P-P-O1P	2.49	118.57	110.44
8	L	1	PM6	C2-N1-C6	2.48	122.14	116.68
6	C	1326	MTE	O3'-C7-N8	2.48	112.44	109.22
8	C	1	PM6	C5-C4-N9	2.47	108.48	106.07
6	L	1326	MTE	O2P-P-O4'	-2.43	99.95	106.65
8	L	1	PM6	C2-N3-C4	2.42	119.56	114.82
6	L	1326	MTE	O2P-P-O1P	2.40	118.30	110.44
8	C	1	PM6	C2-N3-C4	2.33	119.38	114.82
6	C	1326	MTE	N2-C2-N1	-2.32	117.18	120.31
5	K	606	FAD	O2A-PA-O3P	2.24	115.79	105.14
5	B	606	FAD	C8A-N9A-C4A	2.24	108.61	106.90
5	K	606	FAD	N7A-C8A-N9A	-2.23	108.05	114.36
5	K	606	FAD	C4X-C4-N3	2.20	121.83	115.39
6	L	1326	MTE	O3'-C7-N8	2.18	112.06	109.22
5	B	606	FAD	C2A-N3A-C4A	2.17	120.19	114.01
6	L	1326	MTE	O4'-C4'-C3'	2.15	114.10	108.53
5	B	606	FAD	C2A-N1A-C6A	2.14	122.64	118.77
5	B	606	FAD	C9A-C5X-N5	-2.13	119.10	122.37
5	K	606	FAD	C9A-N10-C10	-2.10	119.71	121.77
5	K	606	FAD	P-O3P-PA	-2.07	125.61	131.68
5	B	606	FAD	N7A-C8A-N9A	-2.02	108.64	114.36

There are no chirality outliers.

There are no torsion outliers.

There are no ring outliers.

5.7 Other polymers ⓘ

There are no such residues in this entry.

5.8 Polymer linkage issues

There are no chain breaks in this entry.

6 Fit of model and data ⓘ

6.1 Protein, DNA and RNA chains ⓘ

In the following table, the column labelled ‘#RSRZ> 2’ contains the number (and percentage) of RSRZ outliers, followed by percent RSRZ outliers for the chain as percentile scores relative to all X-ray entries and entries of similar resolution. The OWAB column contains the minimum, median, 95th percentile and maximum values of the occupancy-weighted average B-factor per residue. The column labelled ‘Q< 0.9’ lists the number of (and percentage) of residues with an average occupancy less than 0.9.

Mol	Chain	Analysed	<RSRZ>	#RSRZ>2	OWAB(Å ²)	Q<0.9
1	A	164/164 (100%)	-0.29	4 (2%) 56 53	14, 24, 42, 55	0
1	J	164/164 (100%)	-0.18	5 (3%) 48 45	14, 24, 42, 56	0
2	B	305/305 (100%)	-0.13	2 (0%) 84 86	22, 34, 47, 50	0
2	K	305/305 (100%)	-0.02	7 (2%) 57 54	22, 34, 47, 51	0
3	C	755/755 (100%)	-0.40	2 (0%) 91 92	13, 22, 36, 49	0
3	L	745/755 (98%)	-0.28	8 (1%) 77 79	13, 22, 36, 49	0
All	All	2438/2448 (99%)	-0.26	28 (1%) 77 79	13, 25, 43, 56	0

All (28) RSRZ outliers are listed below:

Mol	Chain	Res	Type	RSRZ
3	L	1288	ASN	5.6
1	J	165	LYS	3.6
2	K	477	PHE	3.6
3	L	985	ASP	3.4
1	J	60	ARG	3.4
1	J	2	THR	3.3
2	K	528	GLY	3.1
1	A	2	THR	2.9
2	B	527	LEU	2.8
3	L	1287	ASN	2.7
3	L	1290	THR	2.6
1	A	63	ASP	2.6
2	B	230	GLU	2.5
3	C	1290	THR	2.5
3	L	1285	HIS	2.5
1	A	61	LEU	2.4
1	J	97	ARG	2.4
2	K	377	ARG	2.3
2	K	476	LYS	2.2

Continued on next page...

Continued from previous page...

Mol	Chain	Res	Type	RSRZ
3	L	1289	ASN	2.2
3	L	1144	THR	2.2
1	J	63	ASP	2.2
2	K	317	ALA	2.2
1	A	97	ARG	2.1
2	K	442	PHE	2.1
3	L	989	LYS	2.1
3	C	724	SER	2.1
2	K	251	GLN	2.0

6.2 Non-standard residues in protein, DNA, RNA chains ⓘ

There are no non-standard protein/DNA/RNA residues in this entry.

6.3 Carbohydrates ⓘ

There are no carbohydrates in this entry.

6.4 Ligands ⓘ

In the following table, the Atoms column lists the number of modelled atoms in the group and the number defined in the chemical component dictionary. LLDF column lists the quality of electron density of the group with respect to its neighbouring residues in protein, DNA or RNA chains. The B-factors column lists the minimum, median, 95th percentile and maximum values of B factors of atoms in the group. The column labelled 'Q < 0.9' lists the number of atoms with occupancy less than 0.9.

Mol	Type	Chain	Res	Atoms	RSR	LLDF	B-factors(Å ²)	Q<0.9
8	PM6	L	1	10/10	0.18	2.17	42,43,44,44	0
8	PM6	C	1	10/10	0.15	0.85	31,32,33,33	0
5	FAD	K	606	53/53	0.14	-0.31	21,27,34,38	0
4	FES	J	602	4/4	0.12	-0.44	18,19,20,21	0
4	FES	J	601	4/4	0.12	-0.64	14,14,15,19	0
6	MTE	L	1326	24/24	0.14	-0.67	24,28,35,36	0
4	FES	A	602	4/4	0.12	-0.87	15,16,17,18	0
5	FAD	B	606	53/53	0.12	-0.96	16,21,26,28	0
7	MOS	C	1327	4/4	0.13	-1.18	34,34,36,48	0
4	FES	A	601	4/4	0.10	-1.23	12,12,14,17	0
6	MTE	C	1326	24/24	0.11	-1.86	18,22,26,29	0
7	MOS	L	1327	4/4	0.09	-2.42	37,39,42,45	0

6.5 Other polymers ⓘ

There are no such residues in this entry.