



Full wwPDB X-ray Structure Validation Report

Feb 27, 2014 – 10:37 AM GMT

PDB ID : 1NX9
Title : Acetobacter turbidans alpha-amino acid ester hydrolase S205A mutant complexed with ampicillin
Authors : Barends, T.R.M.; Polderman-Tijmes, J.J.; Jekel, P.A.; Janssen, D.B.; Dijkstra, B.W.
Deposited on : 2003-02-10
Resolution : 2.20 Å(reported)

This is a full wwPDB validation report for a publicly released PDB entry.
We welcome your comments at validation@mail.wwpdb.org
A user guide is available at <http://wwpdb.org/ValidationPDFNotes.html>

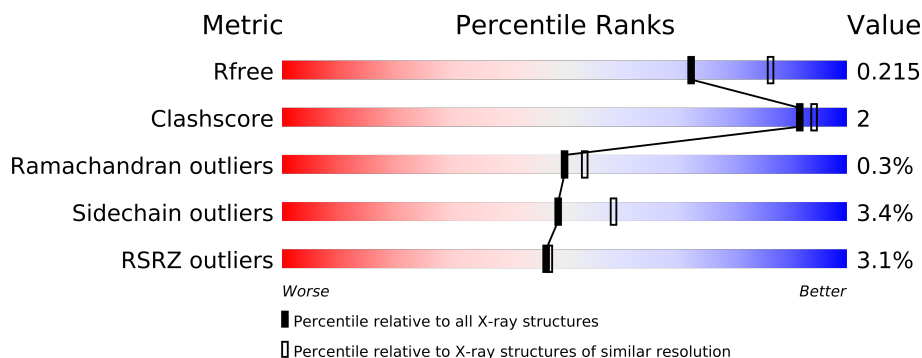
The following versions of software and data (see [references](#)) were used in the production of this report:

MolProbity : 4.02b-467
Mogul : 1.15 2013
Xtriage (Phenix) : dev-1323
EDS : stable22639
Percentile statistics : 21963
Refmac : 5.8.0049
CCP4 : 6.3.0 (Settle)
Ideal geometry (proteins) : Engh & Huber (2001)
Ideal geometry (DNA, RNA) : Parkinson et. al. (1996)
Validation Pipeline (wwPDB-VP) : stable22683

1 Overall quality at a glance

The reported resolution of this entry is 2.20 Å.

Percentile scores (ranging between 0-100) for global validation metrics of the entry are shown in the following graphic. The table shows the number of entries on which the scores are based.



Metric	Whole archive (#Entries)	Similar resolution (#Entries, resolution range(Å))
R_{free}	66092	2938 (2.20-2.20)
Clashscore	79885	3751 (2.20-2.20)
Ramachandran outliers	78287	3681 (2.20-2.20)
Sidechain outliers	78261	3682 (2.20-2.20)
RSRZ outliers	66119	2939 (2.20-2.20)

The table below summarises the geometric issues observed across the polymeric chains and their fit to the electron density. The red, orange, yellow and green segments on the lower bar indicate the fraction of residues that contain outliers for ≥ 3 , 2, 1 and 0 types of geometric quality criteria. The upper red bar (where present) indicates the fraction of residues that have poor fit to the electron density.

Mol	Chain	Length	Quality of chain
1	A	652	
1	B	652	
1	C	652	
1	D	652	

The following table lists non-polymeric compounds that are outliers for geometric or electron-density-fit criteria:

Mol	Type	Chain	Res	Geometry	Electron density
2	AIC	A	5001	-	X
2	AIC	B	5002	-	X
2	AIC	C	5003	-	X
2	AIC	D	5004	-	X

Continued on next page...

Continued from previous page...

Mol	Type	Chain	Res	Geometry	Electron density
3	GOL	A	6002	-	X
3	GOL	B	6004	-	X
3	GOL	C	6006	-	X
3	GOL	D	6008	-	X

2 Entry composition

There are 4 unique types of molecules in this entry. The entry contains 21877 atoms, of which 0 are hydrogen and 0 are deuterium.

In the tables below, the ZeroOcc column contains the number of atoms modelled with zero occupancy, the AltConf column contains the number of residues with at least one atom in alternate conformation and the Trace column contains the number of residues modelled with at most 2 atoms.

- Molecule 1 is a protein called alpha-amino acid ester hydrolase.

Mol	Chain	Residues	Atoms					ZeroOcc	AltConf	Trace
1	A	617	Total	C	N	O	S	0	0	0
			4882	3111	845	906	20			
1	B	617	Total	C	N	O	S	0	0	0
			4882	3111	845	906	20			
1	C	617	Total	C	N	O	S	0	0	0
			4882	3111	845	906	20			
1	D	617	Total	C	N	O	S	0	0	0
			4882	3111	845	906	20			

There are 104 discrepancies between the modelled and reference sequences:

Chain	Residue	Modelled	Actual	Comment	Reference
A	205	ALA	SER	ENGINEERED	UNP Q8VRK8
A	668	LYS	-	MYC EPITOPE	UNP Q8VRK8
A	669	LEU	-	MYC EPITOPE	UNP Q8VRK8
A	670	GLY	-	MYC EPITOPE	UNP Q8VRK8
A	671	PRO	-	MYC EPITOPE	UNP Q8VRK8
A	672	GLU	-	MYC EPITOPE	UNP Q8VRK8
A	673	GLN	-	MYC EPITOPE	UNP Q8VRK8
A	674	LYS	-	MYC EPITOPE	UNP Q8VRK8
A	675	LEU	-	MYC EPITOPE	UNP Q8VRK8
A	676	ILE	-	MYC EPITOPE	UNP Q8VRK8
A	677	SER	-	MYC EPITOPE	UNP Q8VRK8
A	678	GLU	-	MYC EPITOPE	UNP Q8VRK8
A	679	GLU	-	MYC EPITOPE	UNP Q8VRK8
A	680	ASP	-	MYC EPITOPE	UNP Q8VRK8
A	681	LEU	-	MYC EPITOPE	UNP Q8VRK8
A	682	ASN	-	MYC EPITOPE	UNP Q8VRK8
A	683	SER	-	MYC EPITOPE	UNP Q8VRK8
A	684	ALA	-	MYC EPITOPE	UNP Q8VRK8
A	685	VAL	-	MYC EPITOPE	UNP Q8VRK8
A	686	ASP	-	MYC EPITOPE	UNP Q8VRK8
A	687	HIS	-	EXPRESSION TAG	UNP Q8VRK8

Continued on next page...

Continued from previous page...

Chain	Residue	Modelled	Actual	Comment	Reference
A	688	HIS	-	EXPRESSION TAG	UNP Q8VRK8
A	689	HIS	-	EXPRESSION TAG	UNP Q8VRK8
A	690	HIS	-	EXPRESSION TAG	UNP Q8VRK8
A	691	HIS	-	EXPRESSION TAG	UNP Q8VRK8
A	692	HIS	-	EXPRESSION TAG	UNP Q8VRK8
B	205	ALA	SER	ENGINEERED	UNP Q8VRK8
B	668	LYS	-	MYC EPITOPE	UNP Q8VRK8
B	669	LEU	-	MYC EPITOPE	UNP Q8VRK8
B	670	GLY	-	MYC EPITOPE	UNP Q8VRK8
B	671	PRO	-	MYC EPITOPE	UNP Q8VRK8
B	672	GLU	-	MYC EPITOPE	UNP Q8VRK8
B	673	GLN	-	MYC EPITOPE	UNP Q8VRK8
B	674	LYS	-	MYC EPITOPE	UNP Q8VRK8
B	675	LEU	-	MYC EPITOPE	UNP Q8VRK8
B	676	ILE	-	MYC EPITOPE	UNP Q8VRK8
B	677	SER	-	MYC EPITOPE	UNP Q8VRK8
B	678	GLU	-	MYC EPITOPE	UNP Q8VRK8
B	679	GLU	-	MYC EPITOPE	UNP Q8VRK8
B	680	ASP	-	MYC EPITOPE	UNP Q8VRK8
B	681	LEU	-	MYC EPITOPE	UNP Q8VRK8
B	682	ASN	-	MYC EPITOPE	UNP Q8VRK8
B	683	SER	-	MYC EPITOPE	UNP Q8VRK8
B	684	ALA	-	MYC EPITOPE	UNP Q8VRK8
B	685	VAL	-	MYC EPITOPE	UNP Q8VRK8
B	686	ASP	-	MYC EPITOPE	UNP Q8VRK8
B	687	HIS	-	EXPRESSION TAG	UNP Q8VRK8
B	688	HIS	-	EXPRESSION TAG	UNP Q8VRK8
B	689	HIS	-	EXPRESSION TAG	UNP Q8VRK8
B	690	HIS	-	EXPRESSION TAG	UNP Q8VRK8
B	691	HIS	-	EXPRESSION TAG	UNP Q8VRK8
B	692	HIS	-	EXPRESSION TAG	UNP Q8VRK8
C	205	ALA	SER	ENGINEERED	UNP Q8VRK8
C	668	LYS	-	MYC EPITOPE	UNP Q8VRK8
C	669	LEU	-	MYC EPITOPE	UNP Q8VRK8
C	670	GLY	-	MYC EPITOPE	UNP Q8VRK8
C	671	PRO	-	MYC EPITOPE	UNP Q8VRK8
C	672	GLU	-	MYC EPITOPE	UNP Q8VRK8
C	673	GLN	-	MYC EPITOPE	UNP Q8VRK8
C	674	LYS	-	MYC EPITOPE	UNP Q8VRK8
C	675	LEU	-	MYC EPITOPE	UNP Q8VRK8
C	676	ILE	-	MYC EPITOPE	UNP Q8VRK8
C	677	SER	-	MYC EPITOPE	UNP Q8VRK8

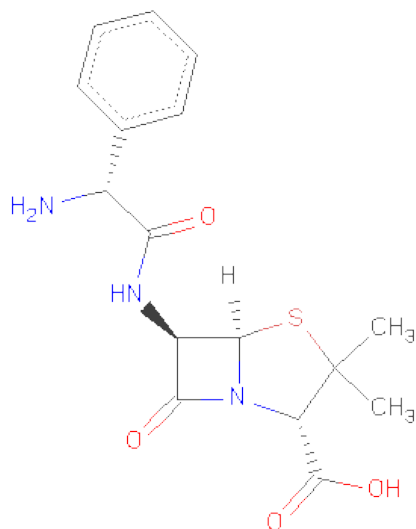
Continued on next page...

Continued from previous page...

Chain	Residue	Modelled	Actual	Comment	Reference
C	678	GLU	-	MYC EPITOPE	UNP Q8VRK8
C	679	GLU	-	MYC EPITOPE	UNP Q8VRK8
C	680	ASP	-	MYC EPITOPE	UNP Q8VRK8
C	681	LEU	-	MYC EPITOPE	UNP Q8VRK8
C	682	ASN	-	MYC EPITOPE	UNP Q8VRK8
C	683	SER	-	MYC EPITOPE	UNP Q8VRK8
C	684	ALA	-	MYC EPITOPE	UNP Q8VRK8
C	685	VAL	-	MYC EPITOPE	UNP Q8VRK8
C	686	ASP	-	MYC EPITOPE	UNP Q8VRK8
C	687	HIS	-	EXPRESSION TAG	UNP Q8VRK8
C	688	HIS	-	EXPRESSION TAG	UNP Q8VRK8
C	689	HIS	-	EXPRESSION TAG	UNP Q8VRK8
C	690	HIS	-	EXPRESSION TAG	UNP Q8VRK8
C	691	HIS	-	EXPRESSION TAG	UNP Q8VRK8
C	692	HIS	-	EXPRESSION TAG	UNP Q8VRK8
D	205	ALA	SER	ENGINEERED	UNP Q8VRK8
D	668	LYS	-	MYC EPITOPE	UNP Q8VRK8
D	669	LEU	-	MYC EPITOPE	UNP Q8VRK8
D	670	GLY	-	MYC EPITOPE	UNP Q8VRK8
D	671	PRO	-	MYC EPITOPE	UNP Q8VRK8
D	672	GLU	-	MYC EPITOPE	UNP Q8VRK8
D	673	GLN	-	MYC EPITOPE	UNP Q8VRK8
D	674	LYS	-	MYC EPITOPE	UNP Q8VRK8
D	675	LEU	-	MYC EPITOPE	UNP Q8VRK8
D	676	ILE	-	MYC EPITOPE	UNP Q8VRK8
D	677	SER	-	MYC EPITOPE	UNP Q8VRK8
D	678	GLU	-	MYC EPITOPE	UNP Q8VRK8
D	679	GLU	-	MYC EPITOPE	UNP Q8VRK8
D	680	ASP	-	MYC EPITOPE	UNP Q8VRK8
D	681	LEU	-	MYC EPITOPE	UNP Q8VRK8
D	682	ASN	-	MYC EPITOPE	UNP Q8VRK8
D	683	SER	-	MYC EPITOPE	UNP Q8VRK8
D	684	ALA	-	MYC EPITOPE	UNP Q8VRK8
D	685	VAL	-	MYC EPITOPE	UNP Q8VRK8
D	686	ASP	-	MYC EPITOPE	UNP Q8VRK8
D	687	HIS	-	EXPRESSION TAG	UNP Q8VRK8
D	688	HIS	-	EXPRESSION TAG	UNP Q8VRK8
D	689	HIS	-	EXPRESSION TAG	UNP Q8VRK8
D	690	HIS	-	EXPRESSION TAG	UNP Q8VRK8
D	691	HIS	-	EXPRESSION TAG	UNP Q8VRK8
D	692	HIS	-	EXPRESSION TAG	UNP Q8VRK8

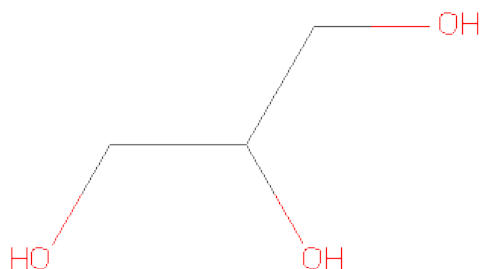
- Molecule 2 is (2S,5R,6R)-6-[[[(2R)-2-AMINO-2-PHENYLETHANOYL]AMINO]}-3,3-D

IMETHYL-7-OXO-4-THIA-1-AZABICYCLO[3.2.0]HEPTANE-2-CARBOXYLICACID
(three-letter code: AIC) (formula: $C_{16}H_{19}N_3O_4S$).



Mol	Chain	Residues	Atoms					ZeroOcc	AltConf
2	A	1	Total	C	N	O	S	0	0
			24	16	3	4	1		
2	B	1	Total	C	N	O	S	0	0
			24	16	3	4	1		
2	C	1	Total	C	N	O	S	0	0
			24	16	3	4	1		
2	D	1	Total	C	N	O	S	0	0
			24	16	3	4	1		

- Molecule 3 is GLYCEROL (three-letter code: GOL) (formula: $C_3H_8O_3$).



Mol	Chain	Residues	Atoms			ZeroOcc	AltConf
3	A	1	Total	C	O	0	0
			6	3	3		
3	B	1	Total	C	O	0	0
			6	3	3		
3	C	1	Total	C	O	0	0
			6	3	3		
3	D	1	Total	C	O	0	0
			6	3	3		

- Molecule 4 is water.

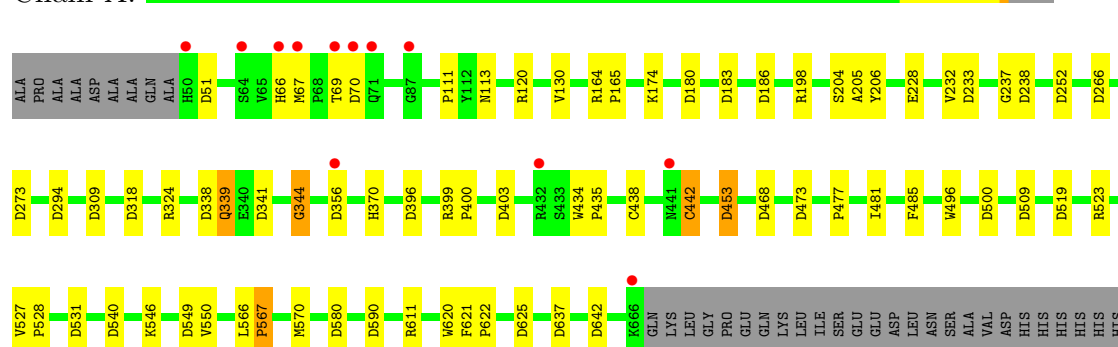
Mol	Chain	Residues	Atoms		ZeroOcc	AltConf
4	A	571	Total	O	0	0
			571	571		
4	B	573	Total	O	0	0
			573	573		
4	C	589	Total	O	0	0
			589	589		
4	D	496	Total	O	0	0
			496	496		

3 Residue-property plots

These plots are drawn for all protein, RNA and DNA chains in the entry. The first graphic for a chain summarises the proportions of errors displayed in the second graphic. The second graphic shows the sequence view annotated by issues in geometry and electron density. Residues are color-coded according to the number of geometric quality criteria for which they contain at least one outlier: green = 0, yellow = 1, orange = 2 and red = 3 or more. A red dot above a residue indicates a poor fit to the electron density ($RSRZ > 2$). Stretches of 2 or more consecutive residues without any outlier are shown as a green connector. Residues present in the sample, but not in the model, are shown in grey.

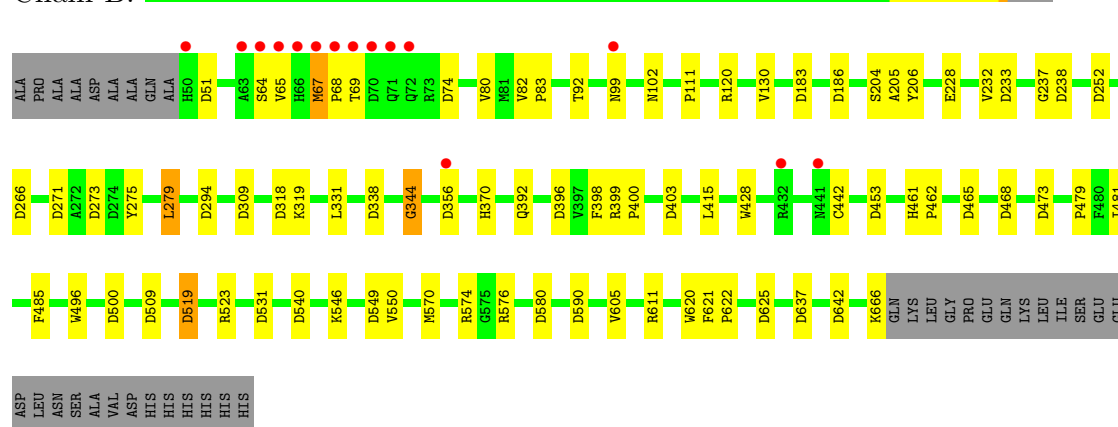
- Molecule 1: alpha-amino acid ester hydrolase

Chain A:



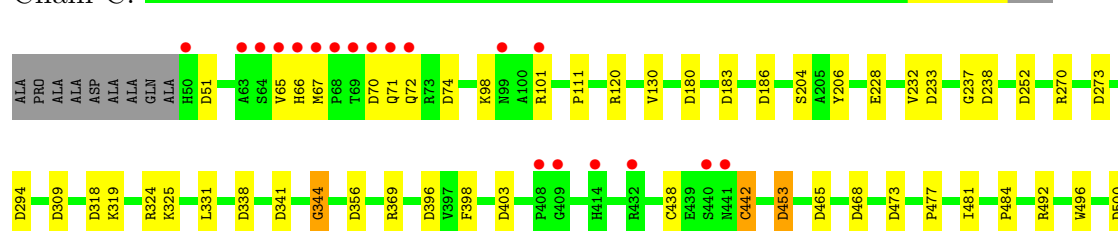
- Molecule 1: alpha-amino acid ester hydrolase

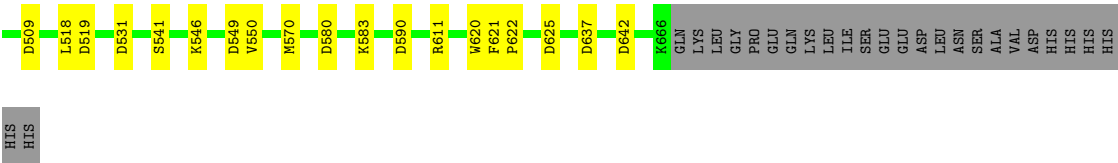
Chain B:



- Molecule 1: alpha-amino acid ester hydrolase

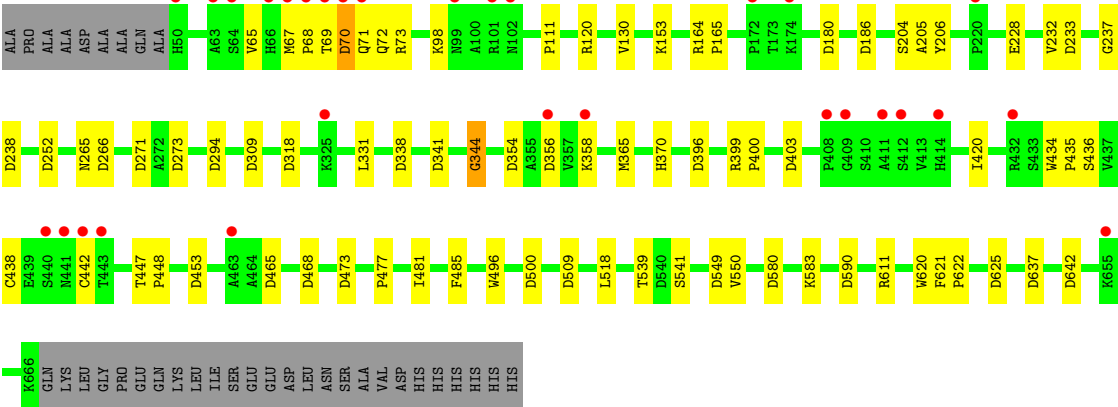
Chain C:





● Molecule 1: alpha-amino acid ester hydrolase

Chain D:



4 Data and refinement statistics

Property	Value	Source
Space group	I 2 3	Depositor
Cell constants a, b, c, α , β , γ	341.83Å 341.83Å 341.83Å 90.00° 90.00° 90.00°	Depositor
Resolution (Å)	15.00 – 2.20 19.94 – 2.20	Depositor EDS
% Data completeness (in resolution range)	96.9 (15.00-2.20) 96.9 (19.94-2.20)	Depositor EDS
R_{merge}	(Not available)	Depositor
R_{sym}	0.08	Depositor
$\langle I/\sigma(I) \rangle$ ¹	2.90 (at 2.19Å)	Xtriage
Refinement program	REFMAC 5.1.19	Depositor
R, R_{free}	0.166 , 0.184 0.203 , 0.215	Depositor DCC
R_{free} test set	16105 reflections (5.28%)	DCC
Wilson B-factor (Å ²)	29.4	Xtriage
Anisotropy	0.000	Xtriage
Bulk solvent k_{sol} (e/Å ³), B_{sol} (Å ²)	0.37 , 29.5	EDS
Estimated twinning fraction	0.000 for -l,-k,-h	Xtriage
L-test for twinning	$\langle L \rangle = 0.53$, $\langle L^2 \rangle = 0.37$	Xtriage
Outliers	0 of 321318 reflections	Xtriage
F_o, F_c correlation	0.95	EDS
Total number of atoms	21877	wwPDB-VP
Average B, all atoms (Å ²)	22.0	wwPDB-VP

Xtriage's analysis on translational NCS is as follows: *The largest off-origin peak in the Patterson function is 1.78% of the height of the origin peak. No significant pseudotranslation is detected.*

¹Intensities estimated from amplitudes.

5 Model quality

5.1 Standard geometry

Bond lengths and bond angles in the following residue types are not validated in this section: GOL, AIC

The Z score for a bond length (or angle) is the number of standard deviations the observed value is removed from the expected value. A bond length (or angle) with $|Z| > 5$ is considered an outlier worth inspection. RMSZ is the root-mean-square of all Z scores of the bond lengths (or angles).

Mol	Chain	Bond lengths		Bond angles	
		RMSZ	# Z >5	RMSZ	# Z >5
1	A	0.34	0/5041	0.74	32/6886 (0.5%)
1	B	0.34	0/5041	0.74	32/6886 (0.5%)
1	C	0.34	0/5041	0.74	32/6886 (0.5%)
1	D	0.33	0/5041	0.73	30/6886 (0.4%)
All	All	0.34	0/20164	0.74	126/27544 (0.5%)

There are no bond length outliers.

All (126) bond angle outliers are listed below:

Mol	Chain	Res	Type	Atoms	Z	Observed(°)	Ideal(°)
1	C	625	ASP	CB-CG-OD2	6.64	124.28	118.30
1	B	625	ASP	CB-CG-OD2	6.62	124.26	118.30
1	A	625	ASP	CB-CG-OD2	6.61	124.25	118.30
1	D	625	ASP	CB-CG-OD2	6.51	124.16	118.30
1	C	500	ASP	CB-CG-OD2	6.26	123.94	118.30
1	B	500	ASP	CB-CG-OD2	6.24	123.92	118.30
1	C	473	ASP	CB-CG-OD2	6.19	123.87	118.30
1	A	500	ASP	CB-CG-OD2	6.18	123.86	118.30
1	D	500	ASP	CB-CG-OD2	6.18	123.86	118.30
1	D	473	ASP	CB-CG-OD2	6.11	123.80	118.30
1	A	473	ASP	CB-CG-OD2	6.10	123.79	118.30
1	A	580	ASP	CB-CG-OD2	6.07	123.76	118.30
1	B	51	ASP	CB-CG-OD2	6.00	123.70	118.30
1	C	51	ASP	CB-CG-OD2	5.99	123.69	118.30
1	C	549	ASP	CB-CG-OD2	5.99	123.69	118.30
1	A	51	ASP	CB-CG-OD2	5.99	123.69	118.30
1	B	580	ASP	CB-CG-OD2	5.96	123.66	118.30
1	B	549	ASP	CB-CG-OD2	5.95	123.65	118.30
1	B	74	ASP	CB-CG-OD2	5.91	123.62	118.30
1	B	273	ASP	CB-CG-OD2	5.87	123.59	118.30

Continued on next page...

Continued from previous page...

Mol	Chain	Res	Type	Atoms	Z	Observed(°)	Ideal(°)
1	B	473	ASP	CB-CG-OD2	5.86	123.57	118.30
1	D	549	ASP	CB-CG-OD2	5.86	123.57	118.30
1	D	580	ASP	CB-CG-OD2	5.86	123.57	118.30
1	A	318	ASP	CB-CG-OD2	5.86	123.57	118.30
1	C	273	ASP	CB-CG-OD2	5.84	123.56	118.30
1	C	580	ASP	CB-CG-OD2	5.79	123.51	118.30
1	C	509	ASP	CB-CG-OD2	5.76	123.48	118.30
1	C	309	ASP	CB-CG-OD2	5.75	123.48	118.30
1	D	318	ASP	CB-CG-OD2	5.75	123.47	118.30
1	C	74	ASP	CB-CG-OD2	5.70	123.43	118.30
1	A	549	ASP	CB-CG-OD2	5.70	123.43	118.30
1	B	309	ASP	CB-CG-OD2	5.68	123.42	118.30
1	D	252	ASP	CB-CG-OD2	5.68	123.41	118.30
1	A	403	ASP	CB-CG-OD2	5.67	123.41	118.30
1	D	309	ASP	CB-CG-OD2	5.67	123.40	118.30
1	B	318	ASP	CB-CG-OD2	5.67	123.40	118.30
1	A	309	ASP	CB-CG-OD2	5.65	123.39	118.30
1	D	238	ASP	CB-CG-OD2	5.64	123.38	118.30
1	D	266	ASP	CB-CG-OD2	5.63	123.36	118.30
1	D	403	ASP	CB-CG-OD2	5.61	123.35	118.30
1	A	273	ASP	CB-CG-OD2	5.61	123.35	118.30
1	A	238	ASP	CB-CG-OD2	5.61	123.35	118.30
1	A	266	ASP	CB-CG-OD2	5.61	123.35	118.30
1	B	403	ASP	CB-CG-OD2	5.60	123.34	118.30
1	D	273	ASP	CB-CG-OD2	5.59	123.33	118.30
1	B	238	ASP	CB-CG-OD2	5.55	123.29	118.30
1	C	318	ASP	CB-CG-OD2	5.54	123.28	118.30
1	D	642	ASP	CB-CG-OD2	5.52	123.27	118.30
1	B	266	ASP	CB-CG-OD2	5.46	123.22	118.30
1	B	509	ASP	CB-CG-OD2	5.45	123.21	118.30
1	B	356	ASP	CB-CG-OD2	5.44	123.20	118.30
1	C	403	ASP	CB-CG-OD2	5.44	123.20	118.30
1	A	509	ASP	CB-CG-OD2	5.42	123.17	118.30
1	B	252	ASP	CB-CG-OD2	5.42	123.17	118.30
1	B	642	ASP	CB-CG-OD2	5.40	123.16	118.30
1	A	252	ASP	CB-CG-OD2	5.40	123.16	118.30
1	C	590	ASP	CB-CG-OD2	5.39	123.16	118.30
1	A	642	ASP	CB-CG-OD2	5.39	123.15	118.30
1	C	238	ASP	CB-CG-OD2	5.39	123.15	118.30
1	C	233	ASP	CB-CG-OD2	5.39	123.15	118.30
1	D	509	ASP	CB-CG-OD2	5.37	123.13	118.30
1	D	468	ASP	CB-CG-OD2	5.35	123.12	118.30

Continued on next page...

Continued from previous page...

Mol	Chain	Res	Type	Atoms	Z	Observed(°)	Ideal(°)
1	D	233	ASP	CB-CG-OD2	5.34	123.11	118.30
1	A	356	ASP	CB-CG-OD2	5.34	123.11	118.30
1	B	468	ASP	CB-CG-OD2	5.33	123.10	118.30
1	A	338	ASP	CB-CG-OD2	5.33	123.10	118.30
1	A	590	ASP	CB-CG-OD2	5.32	123.09	118.30
1	C	642	ASP	CB-CG-OD2	5.31	123.08	118.30
1	B	590	ASP	CB-CG-OD2	5.29	123.06	118.30
1	D	453	ASP	CB-CG-OD2	5.28	123.05	118.30
1	A	186	ASP	CB-CG-OD2	5.26	123.04	118.30
1	C	356	ASP	CB-CG-OD2	5.26	123.03	118.30
1	C	468	ASP	CB-CG-OD2	5.25	123.03	118.30
1	D	186	ASP	CB-CG-OD2	5.24	123.02	118.30
1	A	468	ASP	CB-CG-OD2	5.23	123.01	118.30
1	C	519	ASP	CB-CG-OD2	5.22	123.00	118.30
1	C	338	ASP	CB-CG-OD2	5.22	123.00	118.30
1	C	252	ASP	CB-CG-OD2	5.22	123.00	118.30
1	B	453	ASP	CB-CG-OD2	5.21	122.98	118.30
1	B	637	ASP	CB-CG-OD2	5.21	122.98	118.30
1	A	396	ASP	CB-CG-OD2	5.20	122.98	118.30
1	B	294	ASP	CB-CG-OD2	5.20	122.98	118.30
1	A	233	ASP	CB-CG-OD2	5.20	122.98	118.30
1	D	396	ASP	CB-CG-OD2	5.19	122.97	118.30
1	B	396	ASP	CB-CG-OD2	5.17	122.96	118.30
1	D	590	ASP	CB-CG-OD2	5.17	122.96	118.30
1	D	465	ASP	CB-CG-OD2	5.17	122.95	118.30
1	C	186	ASP	CB-CG-OD2	5.16	122.95	118.30
1	C	453	ASP	CB-CG-OD2	5.16	122.94	118.30
1	B	540	ASP	CB-CG-OD2	5.15	122.94	118.30
1	B	519	ASP	CB-CG-OD2	5.14	122.92	118.30
1	B	338	ASP	CB-CG-OD2	5.14	122.92	118.30
1	D	338	ASP	CB-CG-OD2	5.14	122.92	118.30
1	C	465	ASP	CB-CG-OD2	5.13	122.92	118.30
1	D	341	ASP	CB-CG-OD2	5.13	122.91	118.30
1	D	70	ASP	CB-CG-OD2	5.12	122.91	118.30
1	C	70	ASP	CB-CG-OD2	5.12	122.91	118.30
1	C	396	ASP	CB-CG-OD2	5.11	122.90	118.30
1	D	637	ASP	CB-CG-OD2	5.11	122.90	118.30
1	A	294	ASP	CB-CG-OD2	5.11	122.89	118.30
1	A	531	ASP	CB-CG-OD2	5.11	122.89	118.30
1	D	180	ASP	CB-CG-OD2	5.10	122.89	118.30
1	B	233	ASP	CB-CG-OD2	5.09	122.88	118.30
1	A	453	ASP	CB-CG-OD2	5.09	122.88	118.30

Continued on next page...

Continued from previous page...

Mol	Chain	Res	Type	Atoms	Z	Observed(°)	Ideal(°)
1	C	183	ASP	CB-CG-OD2	5.09	122.88	118.30
1	B	183	ASP	CB-CG-OD2	5.08	122.88	118.30
1	B	531	ASP	CB-CG-OD2	5.08	122.87	118.30
1	B	271	ASP	CB-CG-OD2	5.08	122.87	118.30
1	A	180	ASP	CB-CG-OD2	5.07	122.86	118.30
1	A	183	ASP	CB-CG-OD2	5.06	122.86	118.30
1	A	519	ASP	CB-CG-OD2	5.06	122.86	118.30
1	B	186	ASP	CB-CG-OD2	5.06	122.85	118.30
1	D	354	ASP	CB-CG-OD2	5.06	122.85	118.30
1	D	294	ASP	CB-CG-OD2	5.06	122.85	118.30
1	A	540	ASP	CB-CG-OD2	5.05	122.85	118.30
1	D	356	ASP	CB-CG-OD2	5.05	122.85	118.30
1	A	70	ASP	CB-CG-OD2	5.05	122.84	118.30
1	C	341	ASP	CB-CG-OD2	5.04	122.84	118.30
1	B	465	ASP	CB-CG-OD2	5.04	122.83	118.30
1	C	531	ASP	CB-CG-OD2	5.04	122.83	118.30
1	C	294	ASP	CB-CG-OD2	5.04	122.83	118.30
1	A	341	ASP	CB-CG-OD2	5.03	122.83	118.30
1	A	637	ASP	CB-CG-OD2	5.03	122.83	118.30
1	C	637	ASP	CB-CG-OD2	5.03	122.83	118.30
1	D	271	ASP	CB-CG-OD2	5.03	122.83	118.30
1	C	180	ASP	CB-CG-OD2	5.03	122.83	118.30

There are no chirality outliers.

There are no planarity outliers.

5.2 Close contacts ⓘ

In the following table, the Non-H and H(model) columns list the number of non-hydrogen atoms and hydrogen atoms in the chain respectively. The H(added) column lists the number of hydrogens added by MolProbity. The Clashes column lists the number of clashes within the asymmetric unit, and the number in parentheses is this value normalized per 1000 atoms of the molecule in the chain. The Symm-Clashes column gives symmetry related clashes, in the same way as for the Clashes column.

Mol	Chain	Non-H	H(model)	H(added)	Clashes	Symm-Clashes
1	A	4882	0	4648	21	0
1	B	4882	0	4648	19	0
1	C	4882	0	4648	12	0
1	D	4882	0	4648	17	0
2	A	24	0	17	1	0

Continued on next page...

Continued from previous page...

Mol	Chain	Non-H	H(model)	H(added)	Clashes	Symm-Clashes
2	B	24	0	17	1	0
2	C	24	0	17	0	0
2	D	24	0	17	0	0
3	A	6	0	8	0	0
3	B	6	0	8	0	0
3	C	6	0	8	0	0
3	D	6	0	8	0	0
4	A	571	0	0	2	0
4	B	573	0	0	1	0
4	C	589	0	0	0	0
4	D	496	0	0	0	0
All	All	21877	0	18692	71	0

Clashscore is defined as the number of clashes calculated for the entry per 1000 atoms (including hydrogens) of the entry. The overall clashscore for this entry is 2.

All (71) close contacts within the same asymmetric unit are listed below.

Atom-1	Atom-2	Distance(Å)	Clash(Å)
1:A:339:GLN:HE22	1:A:370:HIS:H	1.43	0.64
1:B:550:VAL:HB	1:B:611:ARG:HB2	1.80	0.63
1:A:232:VAL:HB	1:A:344:GLY:HA2	1.83	0.60
1:A:550:VAL:HB	1:A:611:ARG:HB2	1.84	0.59
1:D:550:VAL:HB	1:D:611:ARG:HB2	1.84	0.58
1:B:232:VAL:HB	1:B:344:GLY:HA2	1.85	0.58
1:D:232:VAL:HB	1:D:344:GLY:HA2	1.86	0.57
2:A:5001:AIC:N2	4:A:6359:HOH:O	2.32	0.57
1:C:550:VAL:HB	1:C:611:ARG:HB2	1.90	0.54
1:C:204:SER:HA	1:C:228:GLU:O	2.09	0.52
1:C:232:VAL:HB	1:C:344:GLY:HA2	1.92	0.52
1:D:621:PHE:CG	1:D:622:PRO:HA	2.46	0.51
1:A:339:GLN:NE2	1:A:370:HIS:H	2.08	0.51
1:A:204:SER:HA	1:A:228:GLU:O	2.11	0.50
1:D:399:ARG:HB3	1:D:400:PRO:HD3	1.94	0.50
1:B:621:PHE:CG	1:B:622:PRO:HA	2.47	0.50
1:A:621:PHE:CG	1:A:622:PRO:HA	2.47	0.49
1:C:621:PHE:CG	1:C:622:PRO:HA	2.47	0.49
1:A:339:GLN:H	1:A:339:GLN:NE2	2.11	0.49
1:B:204:SER:HA	1:B:228:GLU:O	2.13	0.49
1:B:523:ARG:HG3	1:B:605:VAL:HG22	1.95	0.48
1:B:392:GLN:HE21	1:B:428:TRP:HE1	1.62	0.47
1:A:399:ARG:HB3	1:A:400:PRO:HD3	1.97	0.47
1:A:546:LYS:HA	1:A:570:MET:HB3	1.97	0.46

Continued on next page...

Continued from previous page...

Atom-1	Atom-2	Distance(Å)	Clash(Å)
1:D:204:SER:HA	1:D:228:GLU:O	2.15	0.46
1:D:153:LYS:HA	1:D:153:LYS:HD2	1.83	0.45
1:B:546:LYS:HA	1:B:570:MET:HB3	1.98	0.45
1:A:481:ILE:HD11	1:A:485:PHE:CD1	2.51	0.45
2:B:5002:AIC:N2	4:B:6304:HOH:O	2.36	0.45
1:A:111:PRO:HG3	1:A:206:TYR:CG	2.52	0.45
1:D:70:ASP:HA	1:D:73:ARG:HD2	1.97	0.44
1:D:164:ARG:HA	1:D:165:PRO:HD3	1.87	0.44
1:C:481:ILE:HG21	1:C:496:TRP:HB2	1.98	0.44
1:A:164:ARG:HA	1:A:165:PRO:HD3	1.87	0.44
1:A:205:ALA:HB2	1:A:370:HIS:CE1	2.52	0.44
1:A:339:GLN:H	1:A:339:GLN:HE21	1.64	0.43
1:B:574:ARG:HG2	1:B:576:ARG:HG2	2.00	0.43
1:B:111:PRO:HG3	1:B:206:TYR:CG	2.53	0.43
1:B:80:VAL:HG23	1:B:92:THR:HB	2.01	0.43
1:B:399:ARG:HB3	1:B:400:PRO:HD3	2.00	0.43
1:B:205:ALA:HB2	1:B:370:HIS:CE1	2.53	0.43
1:D:111:PRO:HG3	1:D:206:TYR:CG	2.53	0.43
1:B:479:PRO:HA	1:B:621:PHE:O	2.18	0.43
1:B:67:MET:HA	1:B:68:PRO:HD3	1.76	0.43
1:A:113:ASN:ND2	4:A:6047:HOH:O	2.52	0.42
1:C:484:PRO:O	1:C:492:ARG:NH1	2.48	0.42
1:C:111:PRO:HG3	1:C:206:TYR:CG	2.55	0.42
1:B:481:ILE:HG21	1:B:496:TRP:HB2	2.01	0.42
1:D:481:ILE:HD11	1:D:485:PHE:CD1	2.54	0.42
1:B:82:VAL:HA	1:B:83:PRO:HD3	1.82	0.42
1:D:67:MET:HA	1:D:68:PRO:HD3	1.77	0.42
1:A:434:TRP:CG	1:A:435:PRO:HA	2.55	0.42
1:C:369:ARG:HG3	1:C:369:ARG:H	1.65	0.42
1:C:438:CYS:HG	1:C:442:CYS:HG	1.62	0.41
1:A:438:CYS:HG	1:A:442:CYS:HB2	1.85	0.41
1:B:275:TYR:O	1:B:279:LEU:HB2	2.19	0.41
1:A:477:PRO:HB2	1:A:621:PHE:HB2	2.01	0.41
1:A:566:LEU:HA	1:A:567:PRO:HD3	1.89	0.41
1:D:477:PRO:HB2	1:D:621:PHE:HB2	2.03	0.41
1:C:438:CYS:HG	1:C:442:CYS:HB2	1.86	0.41
1:D:365:MET:HB2	1:D:420:ILE:HG23	2.03	0.41
1:A:481:ILE:HG21	1:A:496:TRP:HB2	2.02	0.41
1:B:481:ILE:HD11	1:B:485:PHE:CD1	2.55	0.41
1:D:481:ILE:HG21	1:D:496:TRP:HB2	2.03	0.41
1:A:527:VAL:HA	1:A:528:PRO:HD3	1.91	0.41
1:C:477:PRO:HB2	1:C:621:PHE:HB2	2.01	0.41

Continued on next page...

Continued from previous page...

Atom-1	Atom-2	Distance(Å)	Clash(Å)
1:C:546:LYS:HA	1:C:570:MET:HB3	2.03	0.41
1:D:447:THR:HA	1:D:448:PRO:HD3	1.85	0.40
1:D:434:TRP:CG	1:D:435:PRO:HA	2.55	0.40
1:D:205:ALA:HB2	1:D:370:HIS:CE1	2.56	0.40
1:B:461:HIS:HA	1:B:462:PRO:HD3	1.90	0.40

There are no symmetry-related clashes.

5.3 Torsion angles

5.3.1 Protein backbone ⓘ

In the following table, the Percentiles column shows the percent Ramachandran outliers of the chain as a percentile score with respect to all X-ray entries followed by that with respect to entries of similar resolution. The Analysed column shows the number of residues for which the backbone conformation was analysed, and the total number of residues.

Mol	Chain	Analysed	Favoured	Allowed	Outliers	Percentiles	
1	A	615/652 (94%)	586 (95%)	27 (4%)	2 (0%)	50	53
1	B	615/652 (94%)	591 (96%)	22 (4%)	2 (0%)	50	53
1	C	615/652 (94%)	585 (95%)	28 (5%)	2 (0%)	50	53
1	D	615/652 (94%)	584 (95%)	29 (5%)	2 (0%)	50	53
All	All	2460/2608 (94%)	2346 (95%)	106 (4%)	8 (0%)	50	53

All (8) Ramachandran outliers are listed below:

Mol	Chain	Res	Type
1	A	344	GLY
1	B	344	GLY
1	C	344	GLY
1	D	344	GLY
1	B	237	GLY
1	C	237	GLY
1	A	237	GLY
1	D	237	GLY

5.3.2 Protein sidechains ⓘ

In the following table, the Percentiles column shows the percent sidechain outliers of the chain as a percentile score with respect to all X-ray entries followed by that with respect to entries of similar resolution. The Analysed column shows the number of residues for which the sidechain conformation was analysed, and the total number of residues.

Mol	Chain	Analysed	Rotameric	Outliers	Percentiles	
1	A	516/543 (95%)	502 (97%)	14 (3%)	57	68
1	B	516/543 (95%)	499 (97%)	17 (3%)	50	60
1	C	516/543 (95%)	495 (96%)	21 (4%)	41	49
1	D	516/543 (95%)	498 (96%)	18 (4%)	48	57
All	All	2064/2172 (95%)	1994 (97%)	70 (3%)	49	59

All (70) residues with a non-rotameric sidechain are listed below:

Mol	Chain	Res	Type
1	A	66	HIS
1	A	67	MET
1	A	69	THR
1	A	120	ARG
1	A	130	VAL
1	A	174	LYS
1	A	198	ARG
1	A	324	ARG
1	A	339	GLN
1	A	442	CYS
1	A	453	ASP
1	A	523	ARG
1	A	567	PRO
1	A	620	TRP
1	B	64	SER
1	B	65	VAL
1	B	67	MET
1	B	69	THR
1	B	99	ASN
1	B	102	ASN
1	B	120	ARG
1	B	130	VAL
1	B	279	LEU
1	B	319	LYS
1	B	331	LEU
1	B	398	PHE

Continued on next page...

Continued from previous page...

Mol	Chain	Res	Type
1	B	415	LEU
1	B	442	CYS
1	B	519	ASP
1	B	620	TRP
1	B	666	LYS
1	C	65	VAL
1	C	66	HIS
1	C	67	MET
1	C	71	GLN
1	C	72	GLN
1	C	98	LYS
1	C	101	ARG
1	C	120	ARG
1	C	130	VAL
1	C	270	ARG
1	C	319	LYS
1	C	324	ARG
1	C	325	LYS
1	C	331	LEU
1	C	398	PHE
1	C	442	CYS
1	C	453	ASP
1	C	518	LEU
1	C	541	SER
1	C	583	LYS
1	C	620	TRP
1	D	65	VAL
1	D	69	THR
1	D	71	GLN
1	D	72	GLN
1	D	98	LYS
1	D	120	ARG
1	D	130	VAL
1	D	265	ASN
1	D	331	LEU
1	D	358	LYS
1	D	436	SER
1	D	438	CYS
1	D	442	CYS
1	D	518	LEU
1	D	539	THR
1	D	541	SER

Continued on next page...

Continued from previous page...

Mol	Chain	Res	Type
1	D	583	LYS
1	D	620	TRP

Some sidechains can be flipped to improve hydrogen bonding and reduce clashes. All (11) such sidechains are listed below:

Mol	Chain	Res	Type
1	A	72	GLN
1	A	113	ASN
1	A	133	GLN
1	A	339	GLN
1	B	72	GLN
1	B	99	ASN
1	B	133	GLN
1	B	391	HIS
1	B	392	GLN
1	D	113	ASN
1	D	133	GLN

5.3.3 RNA ⓘ

There are no RNA chains in this entry.

5.4 Non-standard residues in protein, DNA, RNA chains ⓘ

There are no non-standard protein/DNA/RNA residues in this entry.

5.5 Carbohydrates ⓘ

There are no carbohydrates in this entry.

5.6 Ligand geometry ⓘ

8 ligands are modelled in this entry.

In the following table, the Counts columns list the number of bonds (or angles) for which Mogul statistics could be retrieved, the number of bonds (or angles) that are observed in the model and the number of bonds (or angles) that are defined in the chemical component dictionary. The Link column lists molecule types, if any, to which the group is linked. The Z score for a bond length (or angle) is the number of standard deviations the observed value is removed from the expected

value. A bond length (or angle) with $|Z| > 2$ is considered an outlier worth inspection. RMSZ is the root-mean-square of all Z scores of the bond lengths (or angles).

Mol	Type	Chain	Res	Link	Bond lengths			Bond angles		
					Counts	RMSZ	# $ Z > 2$	Counts	RMSZ	# $ Z > 2$
2	AIC	A	5001	-	26,26,26	2.38	7 (26%)	40,40,40	2.19	7 (17%)
3	GOL	A	6002	-	5,5,5	0.31	0	5,5,5	0.26	0
2	AIC	B	5002	-	26,26,26	2.37	7 (26%)	40,40,40	2.20	8 (20%)
3	GOL	B	6004	-	5,5,5	0.33	0	5,5,5	0.18	0
2	AIC	C	5003	-	26,26,26	2.40	7 (26%)	40,40,40	2.23	8 (20%)
3	GOL	C	6006	-	5,5,5	0.31	0	5,5,5	0.29	0
2	AIC	D	5004	-	26,26,26	2.39	7 (26%)	40,40,40	2.20	7 (17%)
3	GOL	D	6008	-	5,5,5	0.29	0	5,5,5	0.26	0

In the following table, the Chirals column lists the number of chiral outliers, the number of chiral centers analysed, the number of these observed in the model and the number defined in the chemical component dictionary. Similar counts are reported in the Torsion and Rings columns. '-' means no outliers of that kind were identified.

Mol	Type	Chain	Res	Link	Chirals	Torsions	Rings
2	AIC	A	5001	-	1/1/9/10	0/16/47/47	0/1/3/3
3	GOL	A	6002	-	-	0/4/4/4	0/0/0/0
2	AIC	B	5002	-	1/1/9/10	0/16/47/47	0/1/3/3
3	GOL	B	6004	-	-	0/4/4/4	0/0/0/0
2	AIC	C	5003	-	1/1/9/10	0/16/47/47	0/1/3/3
3	GOL	C	6006	-	-	0/4/4/4	0/0/0/0
2	AIC	D	5004	-	1/1/9/10	0/16/47/47	0/1/3/3
3	GOL	D	6008	-	-	0/4/4/4	0/0/0/0

All (28) bond length outliers are listed below:

Mol	Chain	Res	Type	Atoms	Z	Observed(Å)	Ideal(Å)
2	C	5003	AIC	C14-C15	-5.91	1.39	1.54
2	D	5004	AIC	C14-C15	-5.88	1.39	1.54
2	B	5002	AIC	C14-C15	-5.87	1.39	1.54
2	A	5001	AIC	C14-C15	-5.86	1.39	1.54
2	D	5004	AIC	C14-N1	-5.75	1.33	1.45
2	C	5003	AIC	C14-N1	-5.73	1.33	1.45
2	B	5002	AIC	C14-N1	-5.72	1.33	1.45
2	A	5001	AIC	C14-N1	-5.68	1.33	1.45
2	C	5003	AIC	C6-S1	-4.39	1.76	1.85
2	D	5004	AIC	C6-S1	-4.33	1.76	1.85
2	B	5002	AIC	C6-S1	-4.31	1.76	1.85
2	A	5001	AIC	C6-S1	-4.26	1.76	1.85

Continued on next page...

Continued from previous page...

Mol	Chain	Res	Type	Atoms	Z	Observed(Å)	Ideal(Å)
2	C	5003	AIC	C13-C14	-4.05	1.48	1.56
2	D	5004	AIC	C13-C14	-4.02	1.48	1.56
2	A	5001	AIC	C13-C14	-3.97	1.48	1.56
2	B	5002	AIC	C13-C14	-3.97	1.48	1.56
2	C	5003	AIC	C4-C3	-3.86	1.46	1.53
2	D	5004	AIC	C4-C3	-3.82	1.46	1.53
2	A	5001	AIC	C4-C3	-3.76	1.47	1.53
2	B	5002	AIC	C4-C3	-3.75	1.47	1.53
2	A	5001	AIC	C13-S1	-3.23	1.76	1.81
2	D	5004	AIC	C13-S1	-3.19	1.76	1.81
2	C	5003	AIC	C13-S1	-3.19	1.76	1.81
2	B	5002	AIC	C13-S1	-3.06	1.76	1.81
2	B	5002	AIC	C15-N3	2.89	1.44	1.37
2	C	5003	AIC	C15-N3	2.88	1.44	1.37
2	A	5001	AIC	C15-N3	2.87	1.44	1.37
2	D	5004	AIC	C15-N3	2.82	1.44	1.37

All (30) bond angle outliers are listed below:

Mol	Chain	Res	Type	Atoms	Z	Observed(°)	Ideal(°)
2	D	5004	AIC	C15-C14-N1	7.34	136.53	115.36
2	C	5003	AIC	C15-C14-N1	7.33	136.51	115.36
2	A	5001	AIC	C15-C14-N1	7.23	136.22	115.36
2	B	5002	AIC	C15-C14-N1	7.23	136.20	115.36
2	A	5001	AIC	C13-C14-N1	6.20	131.88	118.24
2	B	5002	AIC	C13-C14-N1	6.18	131.82	118.24
2	D	5004	AIC	C13-C14-N1	6.04	131.53	118.24
2	C	5003	AIC	C13-C14-N1	6.04	131.51	118.24
2	C	5003	AIC	C14-C13-S1	-5.73	110.36	119.36
2	D	5004	AIC	C14-C13-S1	-5.63	110.53	119.36
2	A	5001	AIC	C14-C13-S1	-5.58	110.61	119.36
2	B	5002	AIC	C14-C13-S1	-5.42	110.85	119.36
2	C	5003	AIC	C13-C14-C15	3.98	91.94	85.20
2	B	5002	AIC	C13-C14-C15	3.98	91.93	85.20
2	D	5004	AIC	C13-C14-C15	3.97	91.92	85.20
2	A	5001	AIC	C13-C14-C15	3.94	91.87	85.20
2	C	5003	AIC	C13-N3-C15	-3.77	88.93	93.93
2	B	5002	AIC	C13-N3-C15	-3.75	88.95	93.93
2	A	5001	AIC	C13-N3-C15	-3.74	88.97	93.93
2	D	5004	AIC	C13-N3-C15	-3.69	89.03	93.93
2	C	5003	AIC	C12-N3-C15	-3.29	116.92	126.26
2	B	5002	AIC	C12-N3-C15	-3.25	117.05	126.26

Continued on next page...

Continued from previous page...

Mol	Chain	Res	Type	Atoms	Z	Observed(°)	Ideal(°)
2	D	5004	AIC	C12-N3-C15	-3.24	117.08	126.26
2	A	5001	AIC	C12-N3-C15	-3.07	117.54	126.26
2	A	5001	AIC	O4-C15-N3	2.26	134.95	131.66
2	B	5002	AIC	O4-C15-N3	2.21	134.88	131.66
2	D	5004	AIC	O4-C15-N3	2.19	134.85	131.66
2	C	5003	AIC	O4-C15-N3	2.17	134.82	131.66
2	B	5002	AIC	C13-N3-C12	-2.13	114.64	117.29
2	C	5003	AIC	C13-N3-C12	-2.02	114.78	117.29

All (4) chirality outliers are listed below:

Mol	Chain	Res	Type	Atom
2	C	5003	AIC	C14
2	D	5004	AIC	C14
2	A	5001	AIC	C14
2	B	5002	AIC	C14

There are no torsion outliers.

There are no ring outliers.

5.7 Other polymers ⓘ

There are no such residues in this entry.

5.8 Polymer linkage issues

There are no chain breaks in this entry.

6 Fit of model and data ⓘ

6.1 Protein, DNA and RNA chains ⓘ

In the following table, the column labelled ‘#RSRZ> 2’ contains the number (and percentage) of RSRZ outliers, followed by percent RSRZ outliers for the chain as percentile scores relative to all X-ray entries and entries of similar resolution. The OWAB column contains the minimum, median, 95th percentile and maximum values of the occupancy-weighted average B-factor per residue. The column labelled ‘Q< 0.9’ lists the number of (and percentage) of residues with an average occupancy less than 0.9.

Mol	Chain	Analysed	<RSRZ>	#RSRZ>2	OWAB(Å ²)	Q<0.9
1	A	617/652 (94%)	-0.39	12 (1%) 64 64	13, 18, 32, 77	0
1	B	617/652 (94%)	-0.40	15 (2%) 56 56	14, 18, 33, 86	0
1	C	617/652 (94%)	-0.36	19 (3%) 47 47	14, 18, 32, 79	0
1	D	617/652 (94%)	-0.23	30 (4%) 28 28	13, 18, 32, 82	0
All	All	2468/2608 (94%)	-0.35	76 (3%) 47 47	13, 18, 32, 86	0

All (76) RSRZ outliers are listed below:

Mol	Chain	Res	Type	RSRZ
1	C	66	HIS	7.1
1	B	99	ASN	6.1
1	D	50	HIS	6.0
1	A	50	HIS	6.0
1	A	66	HIS	5.9
1	B	50	HIS	5.9
1	D	66	HIS	5.5
1	B	69	THR	5.2
1	C	65	VAL	4.9
1	D	70	ASP	4.8
1	B	63	ALA	4.7
1	B	66	HIS	4.6
1	C	50	HIS	4.6
1	A	67	MET	4.4
1	D	101	ARG	4.4
1	C	63	ALA	4.4
1	B	70	ASP	4.3
1	C	101	ARG	4.2
1	B	441	ASN	4.1
1	D	99	ASN	4.1
1	C	441	ASN	4.0

Continued on next page...

Continued from previous page...

Mol	Chain	Res	Type	RSRZ
1	C	64	SER	4.0
1	A	70	ASP	3.8
1	B	67	MET	3.8
1	A	69	THR	3.8
1	D	174	LYS	3.7
1	D	69	THR	3.7
1	D	71	GLN	3.7
1	D	68	PRO	3.6
1	C	71	GLN	3.6
1	B	64	SER	3.5
1	D	356	ASP	3.5
1	C	99	ASN	3.5
1	D	358	LYS	3.4
1	C	408	PRO	3.4
1	D	67	MET	3.3
1	C	70	ASP	3.3
1	B	71	GLN	3.2
1	D	440	SER	3.2
1	D	441	ASN	3.1
1	D	63	ALA	3.1
1	D	408	PRO	3.1
1	D	414	HIS	3.1
1	D	432	ARG	3.0
1	B	65	VAL	3.0
1	A	441	ASN	3.0
1	C	67	MET	2.9
1	C	69	THR	2.8
1	D	64	SER	2.7
1	D	411	ALA	2.7
1	D	409	GLY	2.7
1	A	71	GLN	2.6
1	C	440	SER	2.6
1	C	432	ARG	2.5
1	D	325	LYS	2.5
1	B	432	ARG	2.5
1	D	655	LYS	2.4
1	A	432	ARG	2.4
1	D	102	ASN	2.4
1	D	443	THR	2.4
1	A	64	SER	2.2
1	D	442	CYS	2.2
1	C	72	GLN	2.2

Continued on next page...

Continued from previous page...

Mol	Chain	Res	Type	RSRZ
1	C	68	PRO	2.2
1	D	172	PRO	2.2
1	D	463	ALA	2.2
1	B	356	ASP	2.2
1	D	220	PRO	2.1
1	B	68	PRO	2.1
1	D	412	SER	2.1
1	A	356	ASP	2.1
1	A	666	LYS	2.1
1	A	87	GLY	2.1
1	B	72	GLN	2.1
1	C	409	GLY	2.0
1	C	414	HIS	2.0

6.2 Non-standard residues in protein, DNA, RNA chains ⓘ

There are no non-standard protein/DNA/RNA residues in this entry.

6.3 Carbohydrates ⓘ

There are no carbohydrates in this entry.

6.4 Ligands ⓘ

In the following table, the Atoms column lists the number of modelled atoms in the group and the number defined in the chemical component dictionary. LLDF column lists the quality of electron density of the group with respect to its neighbouring residues in protein, DNA or RNA chains. The B-factors column lists the minimum, median, 95th percentile and maximum values of B factors of atoms in the group. The column labelled 'Q < 0.9' lists the number of atoms with occupancy less than 0.9.

Mol	Type	Chain	Res	Atoms	RSR	LLDF	B-factors(Å ²)	Q<0.9
2	AIC	C	5003	24/24	0.23	12.19	48,60,66,68	0
2	AIC	B	5002	24/24	0.25	10.59	47,63,66,68	0
3	GOL	D	6008	6/6	0.21	9.36	36,59,63,63	0
2	AIC	D	5004	24/24	0.23	7.33	53,62,67,68	0
2	AIC	A	5001	24/24	0.23	5.78	49,63,71,73	0
3	GOL	A	6002	6/6	0.21	4.92	35,57,59,59	0
3	GOL	B	6004	6/6	0.22	4.77	33,53,59,67	0
3	GOL	C	6006	6/6	0.19	4.57	30,50,50,53	0

6.5 Other polymers ⓘ

There are no such residues in this entry.