



Full wwPDB X-ray Structure Validation Report

Feb 28, 2014 – 01:09 AM GMT

PDB ID : 3NYN
Title : Crystal Structure of G Protein-Coupled Receptor Kinase 6 in Complex with Sangivamycin
Authors : Tesmer, J.J.G.; Singh, P.
Deposited on : 2010-07-15
Resolution : 2.72 Å(reported)

This is a full wwPDB validation report for a publicly released PDB entry.
We welcome your comments at validation@mail.wwpdb.org
A user guide is available at <http://wwpdb.org/ValidationPDFNotes.html>

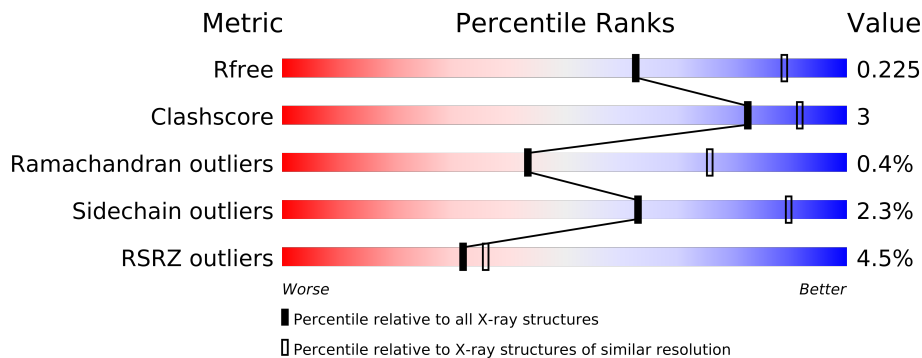
The following versions of software and data (see [references](#)) were used in the production of this report:

MolProbity : 4.02b-467
Mogul : 1.15 2013
Xtriage (Phenix) : dev-1323
EDS : stable22639
Percentile statistics : 21963
Refmac : 5.8.0049
CCP4 : 6.3.0 (Settle)
Ideal geometry (proteins) : Engh & Huber (2001)
Ideal geometry (DNA, RNA) : Parkinson et. al. (1996)
Validation Pipeline (wwPDB-VP) : stable22683

1 Overall quality at a glance

The reported resolution of this entry is 2.72 Å.

Percentile scores (ranging between 0-100) for global validation metrics of the entry are shown in the following graphic. The table shows the number of entries on which the scores are based.



Metric	Whole archive (#Entries)	Similar resolution (#Entries, resolution range(Å))
R_{free}	66092	1770 (2.74-2.70)
Clashscore	79885	2183 (2.74-2.70)
Ramachandran outliers	78287	2147 (2.74-2.70)
Sidechain outliers	78261	2148 (2.74-2.70)
RSRZ outliers	66119	1772 (2.74-2.70)

The table below summarises the geometric issues observed across the polymeric chains and their fit to the electron density. The red, orange, yellow and green segments on the lower bar indicate the fraction of residues that contain outliers for ≥ 3 , 2, 1 and 0 types of geometric quality criteria. The upper red bar (where present) indicates the fraction of residues that have poor fit to the electron density.

Mol	Chain	Length	Quality of chain
1	A	576	
1	B	576	

The following table lists non-polymeric compounds that are outliers for geometric or electron-density-fit criteria:

Mol	Type	Chain	Res	Geometry	Electron density
4	BU3	A	583	-	X

2 Entry composition i

There are 5 unique types of molecules in this entry. The entry contains 9046 atoms, of which 0 are hydrogen and 0 are deuterium.

In the tables below, the ZeroOcc column contains the number of atoms modelled with zero occupancy, the AltConf column contains the number of residues with at least one atom in alternate conformation and the Trace column contains the number of residues modelled with at most 2 atoms.

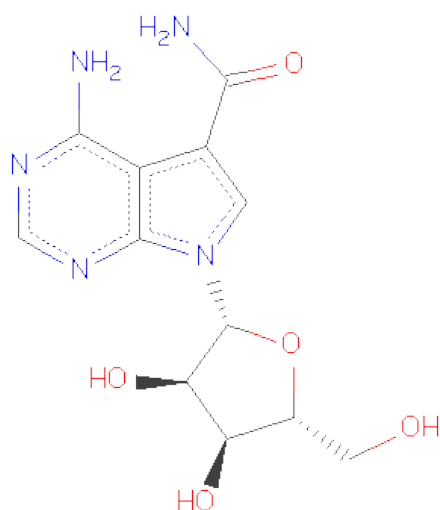
- Molecule 1 is a protein called G protein-coupled receptor kinase 6.

Mol	Chain	Residues	Atoms					ZeroOcc	AltConf	Trace
1	A	554	Total	C	N	O	S	0	0	0
			4454	2834	785	807	28			
1	B	554	Total	C	N	O	S	0	0	0
			4454	2834	785	807	28			

There are 2 discrepancies between the modelled and reference sequences:

Chain	Residue	Modelled	Actual	Comment	Reference
A	1	ACE	-	ACETYLATION	UNP P43250
B	1	ACE	-	ACETYLATION	UNP P43250

- Molecule 2 is SANGIVAMYCIN (three-letter code: SGV) (formula: C₁₂H₁₅N₅O₅).



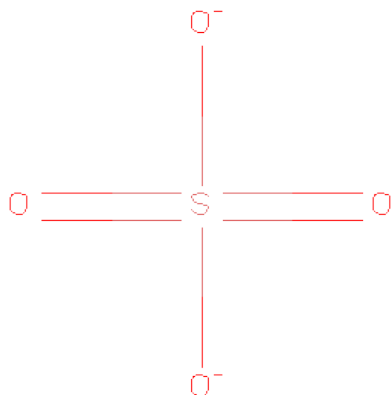
Mol	Chain	Residues	Atoms				ZeroOcc	AltConf
2	A	1	Total	C	N	O	0	0
			22	12	5	5		

Continued on next page...

Continued from previous page...

Mol	Chain	Residues	Atoms				ZeroOcc	AltConf
2	B	1	Total	C	N	O	0	0
			22	12	5	5		

- Molecule 3 is SULFATE ION (three-letter code: SO4) (formula: O₄S).



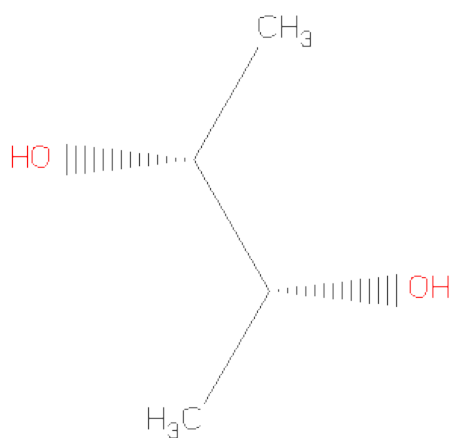
Mol	Chain	Residues	Atoms			ZeroOcc	AltConf
3	A	1	Total	O	S	0	0
			5	4	1		
3	A	1	Total	O	S	0	0
			5	4	1		
3	A	1	Total	O	S	0	0
			5	4	1		
3	A	1	Total	O	S	0	0
			5	4	1		
3	A	1	Total	O	S	0	0
			5	4	1		
3	A	1	Total	O	S	0	0
			5	4	1		
3	B	1	Total	O	S	0	0
			5	4	1		
3	B	1	Total	O	S	0	0
			5	4	1		
3	B	1	Total	O	S	0	0
			5	4	1		

Continued on next page...

Continued from previous page...

Mol	Chain	Residues	Atoms			ZeroOcc	AltConf
3	B	1	Total	O	S	0	0
			5	4	1		
3	B	1	Total	O	S	0	0
			5	4	1		
3	B	1	Total	O	S	0	0
			5	4	1		
3	B	1	Total	O	S	0	0
			5	4	1		

- Molecule 4 is (R,R)-2,3-BUTANEDIOL (three-letter code: BU3) (formula: C₄H₁₀O₂).



Mol	Chain	Residues	Atoms			ZeroOcc	AltConf
4	A	1	Total	C	O	0	0
			6	4	2		
4	B	1	Total	C	O	0	0
			6	4	2		

- Molecule 5 is water.

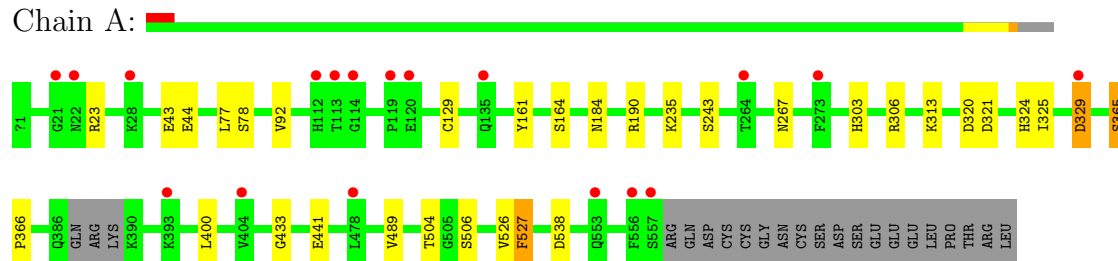
Mol	Chain	Residues	Atoms		ZeroOcc	AltConf
5	A	7	Total	O	0	0
			7	7		
5	B	5	Total	O	0	0
			5	5		

3 Residue-property plots

These plots are drawn for all protein, RNA and DNA chains in the entry. The first graphic for a chain summarises the proportions of errors displayed in the second graphic. The second graphic shows the sequence view annotated by issues in geometry and electron density. Residues are color-coded according to the number of geometric quality criteria for which they contain at least one outlier: green = 0, yellow = 1, orange = 2 and red = 3 or more. A red dot above a residue indicates a poor fit to the electron density ($RSRZ > 2$). Stretches of 2 or more consecutive residues without any outlier are shown as a green connector. Residues present in the sample, but not in the model, are shown in grey.

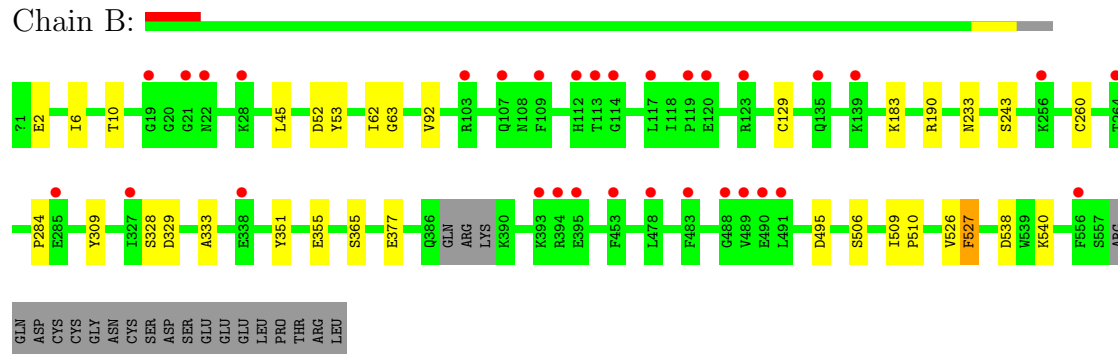
- Molecule 1: G protein-coupled receptor kinase 6

Chain A:



- Molecule 1: G protein-coupled receptor kinase 6

Chain B:



4 Data and refinement statistics

Property	Value	Source
Space group	P 61	Depositor
Cell constants a, b, c, α , β , γ	154.59Å 154.59Å 207.91Å 90.00° 90.00° 120.00°	Depositor
Resolution (Å)	30.00 – 2.72 36.62 – 2.71	Depositor EDS
% Data completeness (in resolution range)	60.4 (30.00-2.72) 60.4 (36.62-2.71)	Depositor EDS
R_{merge}	0.09	Depositor
R_{sym}	(Not available)	Depositor
$\langle I/\sigma(I) \rangle$ ¹	3.92 (at 2.72Å)	Xtriage
Refinement program	REFMAC 5.5.0109	Depositor
R, R_{free}	0.227 , 0.238 0.228 , 0.225	Depositor DCC
R_{free} test set	2286 reflections (5.26%)	DCC
Wilson B-factor (Å ²)	62.2	Xtriage
Anisotropy	0.686	Xtriage
Bulk solvent k_{sol} (e/Å ³), B_{sol} (Å ²)	0.27 , 43.4	EDS
Estimated twinning fraction	0.044 for h,-h-k,-l	Xtriage
L-test for twinning	$\langle L \rangle = 0.50$, $\langle L^2 \rangle = 0.33$	Xtriage
Outliers	2 of 45809 reflections (0.004%)	Xtriage
F_o, F_c correlation	0.93	EDS
Total number of atoms	9046	wwPDB-VP
Average B, all atoms (Å ²)	114.0	wwPDB-VP

Xtriage's analysis on translational NCS is as follows: *The largest off-origin peak in the Patterson function is 2.36% of the height of the origin peak. No significant pseudotranslation is detected.*

¹Intensities estimated from amplitudes.

5 Model quality

5.1 Standard geometry

Bond lengths and bond angles in the following residue types are not validated in this section: BU3, SO4, ACE, SGV

The Z score for a bond length (or angle) is the number of standard deviations the observed value is removed from the expected value. A bond length (or angle) with $|Z| > 5$ is considered an outlier worth inspection. RMSZ is the root-mean-square of all Z scores of the bond lengths (or angles).

Mol	Chain	Bond lengths		Bond angles	
		RMSZ	$\# Z > 5$	RMSZ	$\# Z > 5$
1	A	0.41	0/4553	0.53	0/6140
1	B	0.41	0/4553	0.54	0/6140
All	All	0.41	0/9106	0.53	0/12280

There are no bond length outliers.

There are no bond angle outliers.

There are no chirality outliers.

There are no planarity outliers.

5.2 Close contacts

In the following table, the Non-H and H(model) columns list the number of non-hydrogen atoms and hydrogen atoms in the chain respectively. The H(added) column lists the number of hydrogens added by MolProbity. The Clashes column lists the number of clashes within the asymmetric unit, and the number in parentheses is this value normalized per 1000 atoms of the molecule in the chain. The Symm-Clashes column gives symmetry related clashes, in the same way as for the Clashes column.

Mol	Chain	Non-H	H(model)	H(added)	Clashes	Symm-Clashes
1	A	4454	0	0	15	0
1	B	4454	0	0	14	0
2	A	22	0	0	0	0
2	B	22	0	0	0	0
3	A	35	0	0	1	0
3	B	35	0	0	0	0
4	A	6	0	0	0	0
4	B	6	0	0	0	0
5	A	7	0	0	1	0
5	B	5	0	0	0	0

Continued on next page...

Continued from previous page...

Mol	Chain	Non-H	H(model)	H(added)	Clashes	Symm-Clashes
All	All	9046	0	0	28	0

Clashscore is defined as the number of clashes calculated for the entry per 1000 atoms (including hydrogens) of the entry. The overall clashscore for this entry is 3.

All (28) close contacts within the same asymmetric unit are listed below.

Atom-1	Atom-2	Distance(Å)	Clash(Å)
1:B:355:GLU:OE2	1:B:355:GLU:N	2.36	0.58
3:A:582:SO4:O2	1:B:540:LYS:NZ	2.39	0.56
1:A:527:PHE:C	1:A:527:PHE:CD1	2.83	0.51
1:B:527:PHE:CD1	1:B:527:PHE:C	2.83	0.51
1:A:320:ASP:OD1	1:A:324:HIS:N	2.44	0.50
1:A:43:GLU:O	1:A:44:GLU:C	2.50	0.50
1:B:309:TYR:OH	1:B:328:SER:O	2.28	0.50
1:A:527:PHE:CD2	1:B:527:PHE:CE2	3.01	0.49
1:A:538:ASP:C	1:A:538:ASP:OD1	2.53	0.47
1:B:92:VAL:CG1	1:B:92:VAL:O	2.62	0.47
1:A:329:ASP:N	5:A:558:HOH:O	2.46	0.47
1:A:433:GLY:N	1:A:441:GLU:OE1	2.48	0.47
1:B:538:ASP:C	1:B:538:ASP:OD1	2.54	0.47
1:A:92:VAL:CG1	1:A:92:VAL:O	2.64	0.46
1:B:6:ILE:O	1:B:10:THR:OG1	2.35	0.45
1:B:62:ILE:O	1:B:63:GLY:C	2.55	0.44
1:A:303:HIS:O	1:A:306:ARG:N	2.50	0.44
1:B:52:ASP:O	1:B:53:TYR:C	2.57	0.43
1:A:365:SER:N	1:A:366:PRO:CD	2.81	0.43
1:A:235:LYS:NZ	1:A:504:THR:OG1	2.51	0.43
1:B:351:TYR:OH	1:B:377:GLU:OE2	2.36	0.42
1:A:267:ASN:ND2	1:A:321:ASP:OD1	2.53	0.42
1:B:509:ILE:N	1:B:510:PRO:CD	2.83	0.42
1:A:77:LEU:O	1:A:78:SER:C	2.58	0.41
1:B:233:ASN:ND2	1:B:333:ALA:O	2.54	0.41
1:A:325:ILE:C	1:A:325:ILE:CD1	2.89	0.41
1:A:161:TYR:O	1:A:164:SER:N	2.54	0.41
1:B:2:GLU:CG	1:B:2:GLU:O	2.69	0.40

There are no symmetry-related clashes.

5.3 Torsion angles

5.3.1 Protein backbone ⓘ

In the following table, the Percentiles column shows the percent Ramachandran outliers of the chain as a percentile score with respect to all X-ray entries followed by that with respect to entries of similar resolution. The Analysed column shows the number of residues for which the backbone conformation was analysed, and the total number of residues.

Mol	Chain	Analysed	Favoured	Allowed	Outliers	Percentiles	
1	A	550/576 (96%)	502 (91%)	46 (8%)	2 (0%)	43	76
1	B	550/576 (96%)	494 (90%)	54 (10%)	2 (0%)	43	76
All	All	1100/1152 (96%)	996 (90%)	100 (9%)	4 (0%)	43	76

All (4) Ramachandran outliers are listed below:

Mol	Chain	Res	Type
1	A	489	VAL
1	A	329	ASP
1	B	183	LYS
1	B	284	PRO

5.3.2 Protein sidechains ⓘ

In the following table, the Percentiles column shows the percent sidechain outliers of the chain as a percentile score with respect to all X-ray entries followed by that with respect to entries of similar resolution. The Analysed column shows the number of residues for which the sidechain conformation was analysed, and the total number of residues.

Mol	Chain	Analysed	Rotameric	Outliers	Percentiles	
1	A	481/502 (96%)	470 (98%)	11 (2%)	63	90
1	B	481/502 (96%)	470 (98%)	11 (2%)	63	90
All	All	962/1004 (96%)	940 (98%)	22 (2%)	63	90

All (22) residues with a non-rotameric sidechain are listed below:

Mol	Chain	Res	Type
1	A	23	ARG
1	A	129	CYS
1	A	184	ASN
1	A	190	ARG
1	A	243	SER

Continued on next page...

Continued from previous page...

Mol	Chain	Res	Type
1	A	313	LYS
1	A	365	SER
1	A	400	LEU
1	A	506	SER
1	A	526	VAL
1	A	527	PHE
1	B	45	LEU
1	B	129	CYS
1	B	190	ARG
1	B	243	SER
1	B	260	CYS
1	B	329	ASP
1	B	365	SER
1	B	495	ASP
1	B	506	SER
1	B	526	VAL
1	B	527	PHE

Some sidechains can be flipped to improve hydrogen bonding and reduce clashes. There are no such sidechains identified.

5.3.3 RNA ⓘ

There are no RNA chains in this entry.

5.4 Non-standard residues in protein, DNA, RNA chains ⓘ

There are no non-standard protein/DNA/RNA residues in this entry.

5.5 Carbohydrates ⓘ

There are no carbohydrates in this entry.

5.6 Ligand geometry ⓘ

18 ligands are modelled in this entry.

In the following table, the Counts columns list the number of bonds (or angles) for which Mogul statistics could be retrieved, the number of bonds (or angles) that are observed in the model and the number of bonds (or angles) that are defined in the chemical component dictionary. The Link

column lists molecule types, if any, to which the group is linked. The Z score for a bond length (or angle) is the number of standard deviations the observed value is removed from the expected value. A bond length (or angle) with $|Z| > 2$ is considered an outlier worth inspection. RMSZ is the root-mean-square of all Z scores of the bond lengths (or angles).

Mol	Type	Chain	Res	Link	Bond lengths			Bond angles		
					Counts	RMSZ	# Z > 2	Counts	RMSZ	# Z > 2
2	SGV	A	577	-	24,24,24	1.32	2 (8%)	34,36,36	2.29	9 (26%)
3	SO4	A	578	-	4,4,4	0.25	0	6,6,6	0.26	0
3	SO4	A	579	-	4,4,4	0.29	0	6,6,6	0.14	0
3	SO4	A	580	-	4,4,4	0.17	0	6,6,6	0.17	0
3	SO4	A	581	-	4,4,4	0.16	0	6,6,6	0.12	0
3	SO4	A	582	-	4,4,4	0.22	0	6,6,6	0.23	0
4	BU3	A	583	-	5,5,5	5.29	4 (80%)	6,6,6	0.60	0
3	SO4	A	584	-	4,4,4	0.26	0	6,6,6	0.07	0
3	SO4	A	585	-	4,4,4	0.22	0	6,6,6	0.13	0
2	SGV	B	577	-	24,24,24	1.32	3 (12%)	34,36,36	2.52	10 (29%)
3	SO4	B	578	-	4,4,4	0.19	0	6,6,6	0.25	0
3	SO4	B	579	-	4,4,4	0.22	0	6,6,6	0.10	0
3	SO4	B	580	-	4,4,4	0.16	0	6,6,6	0.08	0
3	SO4	B	581	-	4,4,4	0.19	0	6,6,6	0.12	0
3	SO4	B	582	-	4,4,4	0.13	0	6,6,6	0.54	0
4	BU3	B	583	-	5,5,5	5.40	4 (80%)	6,6,6	0.38	0
3	SO4	B	584	-	4,4,4	0.22	0	6,6,6	0.09	0
3	SO4	B	585	-	4,4,4	0.17	0	6,6,6	0.08	0

In the following table, the Chirals column lists the number of chiral outliers, the number of chiral centers analysed, the number of these observed in the model and the number defined in the chemical component dictionary. Similar counts are reported in the Torsion and Rings columns. '-' means no outliers of that kind were identified.

Mol	Type	Chain	Res	Link	Chirals	Torsions	Rings
2	SGV	A	577	-	-	0/8/26/26	0/1/3/3
3	SO4	A	578	-	-	0/0/0/0	0/0/0/0
3	SO4	A	579	-	-	0/0/0/0	0/0/0/0
3	SO4	A	580	-	-	0/0/0/0	0/0/0/0
3	SO4	A	581	-	-	0/0/0/0	0/0/0/0
3	SO4	A	582	-	-	0/0/0/0	0/0/0/0
4	BU3	A	583	-	-	0/4/4/4	0/0/0/0
3	SO4	A	584	-	-	0/0/0/0	0/0/0/0
3	SO4	A	585	-	-	0/0/0/0	0/0/0/0
2	SGV	B	577	-	-	0/8/26/26	0/1/3/3
3	SO4	B	578	-	-	0/0/0/0	0/0/0/0
3	SO4	B	579	-	-	0/0/0/0	0/0/0/0

Continued on next page...

Continued from previous page...

Mol	Type	Chain	Res	Link	Chirals	Torsions	Rings
3	SO4	B	580	-	-	0/0/0/0	0/0/0/0
3	SO4	B	581	-	-	0/0/0/0	0/0/0/0
3	SO4	B	582	-	-	0/0/0/0	0/0/0/0
4	BU3	B	583	-	-	0/4/4/4	0/0/0/0
3	SO4	B	584	-	-	0/0/0/0	0/0/0/0
3	SO4	B	585	-	-	0/0/0/0	0/0/0/0

All (13) bond length outliers are listed below:

Mol	Chain	Res	Type	Atoms	Z	Observed(Å)	Ideal(Å)
4	A	583	BU3	C4-C3	-7.40	1.32	1.51
4	B	583	BU3	C1-C2	-7.39	1.32	1.51
4	B	583	BU3	C4-C3	-7.32	1.33	1.51
4	A	583	BU3	C1-C2	-7.04	1.33	1.51
2	B	577	SGV	C7-C5	4.68	1.48	1.41
4	B	583	BU3	O6-C3	-4.55	1.33	1.43
2	A	577	SGV	C7-C5	4.47	1.47	1.41
4	A	583	BU3	O6-C3	-4.42	1.34	1.43
4	B	583	BU3	O5-C2	-4.12	1.34	1.43
4	A	583	BU3	O5-C2	-3.99	1.35	1.43
2	B	577	SGV	C4-N9	-2.20	1.34	1.37
2	A	577	SGV	C4-N9	-2.12	1.34	1.37
2	B	577	SGV	C8-N9	-2.01	1.34	1.38

All (19) bond angle outliers are listed below:

Mol	Chain	Res	Type	Atoms	Z	Observed(°)	Ideal(°)
2	B	577	SGV	N3-C2-N1	-7.44	122.49	128.71
2	A	577	SGV	N3-C2-N1	-6.42	123.34	128.71
2	A	577	SGV	C7-C5-C4	-5.49	102.50	107.56
2	B	577	SGV	C7-C5-C4	-5.38	102.60	107.56
2	B	577	SGV	C5-C7-C10	-4.61	119.84	127.08
2	B	577	SGV	N3-C4-N9	4.50	133.56	125.43
2	A	577	SGV	C5-C7-C10	-4.21	120.48	127.08
2	A	577	SGV	O4'-C1'-N9	4.20	112.35	108.44
2	A	577	SGV	N3-C4-N9	4.16	132.94	125.43
2	B	577	SGV	C2'-C1'-N9	-4.01	102.98	113.27
2	B	577	SGV	O4'-C1'-N9	3.85	112.02	108.44
2	B	577	SGV	C8-N9-C4	3.84	112.29	105.92
2	A	577	SGV	C5-C4-N3	-3.74	118.32	125.71
2	B	577	SGV	C5-C4-N3	-3.71	118.37	125.71
2	A	577	SGV	C8-N9-C4	3.14	111.14	105.92

Continued on next page...

Continued from previous page...

Mol	Chain	Res	Type	Atoms	Z	Observed(°)	Ideal(°)
2	B	577	SGV	C2-N3-C4	2.75	121.84	114.01
2	A	577	SGV	C2'-C1'-N9	-2.60	106.58	113.27
2	A	577	SGV	C2-N3-C4	2.58	121.35	114.01
2	B	577	SGV	C8-N9-C1'	-2.05	123.61	125.51

There are no chirality outliers.

There are no torsion outliers.

There are no ring outliers.

5.7 Other polymers ⓘ

There are no such residues in this entry.

5.8 Polymer linkage issues

There are no chain breaks in this entry.

6 Fit of model and data ⓘ

6.1 Protein, DNA and RNA chains ⓘ

In the following table, the column labelled ‘#RSRZ> 2’ contains the number (and percentage) of RSRZ outliers, followed by percent RSRZ outliers for the chain as percentile scores relative to all X-ray entries and entries of similar resolution. The OWAB column contains the minimum, median, 95th percentile and maximum values of the occupancy-weighted average B-factor per residue. The column labelled ‘Q< 0.9’ lists the number of (and percentage) of residues with an average occupancy less than 0.9.

Mol	Chain	Analysed	<RSRZ>	#RSRZ>2		OWAB(Å ²)	Q<0.9
1	A	554/576 (96%)	0.22	18 (3%)	45 51	49, 99, 220, 248	0
1	B	554/576 (96%)	0.26	32 (5%)	22 24	47, 109, 231, 260	0
All	All	1108/1152 (96%)	0.24	50 (4%)	32 36	47, 102, 227, 260	0

All (50) RSRZ outliers are listed below:

Mol	Chain	Res	Type	RSRZ
1	A	113	THR	5.6
1	A	22	ASN	5.4
1	B	19	GLY	4.8
1	A	114	GLY	4.4
1	B	28	LYS	4.4
1	A	557	SER	4.1
1	B	491	LEU	4.0
1	A	556	PHE	4.0
1	B	112	HIS	3.8
1	B	113	THR	3.8
1	B	488	GLY	3.7
1	B	22	ASN	3.7
1	B	135	GLN	3.6
1	A	120	GLU	3.5
1	B	393	LYS	3.5
1	B	395	GLU	3.3
1	A	393	LYS	3.1
1	B	21	GLY	3.0
1	B	478	LEU	3.0
1	A	28	LYS	3.0
1	B	556	PHE	3.0
1	B	123	ARG	2.9
1	B	109	PHE	2.8
1	B	114	GLY	2.8

Continued on next page...

Continued from previous page...

Mol	Chain	Res	Type	RSRZ
1	B	483	PHE	2.8
1	A	273	PHE	2.7
1	A	119	PRO	2.6
1	B	285	GLU	2.6
1	B	394	ARG	2.6
1	A	264	THR	2.6
1	B	107	GLN	2.6
1	B	103	ARG	2.5
1	B	117	LEU	2.5
1	A	329	ASP	2.5
1	B	264	THR	2.5
1	A	553	GLN	2.5
1	A	478	LEU	2.4
1	A	404	VAL	2.3
1	B	139	LYS	2.3
1	B	120	GLU	2.3
1	B	327	ILE	2.3
1	A	21	GLY	2.1
1	B	453	PHE	2.1
1	B	490	GLU	2.1
1	B	119	PRO	2.1
1	B	489	VAL	2.1
1	B	338	GLU	2.0
1	A	112	HIS	2.0
1	A	135	GLN	2.0
1	B	256	LYS	2.0

6.2 Non-standard residues in protein, DNA, RNA chains ⓘ

There are no non-standard protein/DNA/RNA residues in this entry.

6.3 Carbohydrates ⓘ

There are no carbohydrates in this entry.

6.4 Ligands ⓘ

In the following table, the Atoms column lists the number of modelled atoms in the group and the number defined in the chemical component dictionary. LLDF column lists the quality of electron density of the group with respect to its neighbouring residues in protein, DNA or RNA chains. The B-factors column lists the minimum, median, 95th percentile and maximum values of B factors

of atoms in the group. The column labelled 'Q < 0.9' lists the number of atoms with occupancy less than 0.9.

Mol	Type	Chain	Res	Atoms	RSR	LLDF	B-factors(Å ²)	Q<0.9
4	BU3	A	583	6/6	0.24	4.49	66,67,68,68	0
3	SO4	B	585	5/5	0.43	1.83	164,165,165,166	0
4	BU3	B	583	6/6	0.20	0.89	66,68,69,69	0
2	SGV	A	577	22/22	0.28	0.11	84,86,89,89	0
3	SO4	A	581	5/5	0.19	0.08	118,118,119,119	0
3	SO4	B	584	5/5	0.21	-0.04	225,226,226,227	0
2	SGV	B	577	22/22	0.23	-0.09	90,92,95,95	0
3	SO4	A	585	5/5	0.20	-0.28	157,158,158,158	0
3	SO4	A	584	5/5	0.19	-0.30	219,219,220,220	0
3	SO4	B	579	5/5	0.14	-0.76	183,184,184,185	0
3	SO4	A	580	5/5	0.11	-1.20	106,107,107,107	0
3	SO4	B	578	5/5	0.05	-1.33	85,86,88,89	0
3	SO4	A	578	5/5	0.07	-1.48	80,81,81,83	0
3	SO4	A	582	5/5	0.09	-1.73	60,61,62,62	0
3	SO4	B	580	5/5	0.09	-1.83	109,110,111,111	0
3	SO4	B	581	5/5	0.14	-2.35	123,123,124,125	0
3	SO4	A	579	5/5	0.07	-2.63	169,169,169,170	0
3	SO4	B	582	5/5	0.07	-2.77	66,67,68,70	0

6.5 Other polymers ⓘ

There are no such residues in this entry.