



# Full wwPDB X-ray Structure Validation Report

Oct 13, 2014 – 06:41 PM EDT

PDB ID : 4O15  
Title : The crystal structure of a mutant NAMPT (S165F) in complex with GNE-618  
Authors : Oh, A.; Coons, M.; Brillantes, B.; Wang, W.  
Deposited on : 2013-12-15  
Resolution : 1.80 Å(reported)

This is a full wwPDB validation report for a publicly released PDB entry.  
We welcome your comments at [validation@mail.wwpdb.org](mailto:validation@mail.wwpdb.org)  
A user guide is available at <http://wwpdb.org/ValidationPDFNotes.html>

---

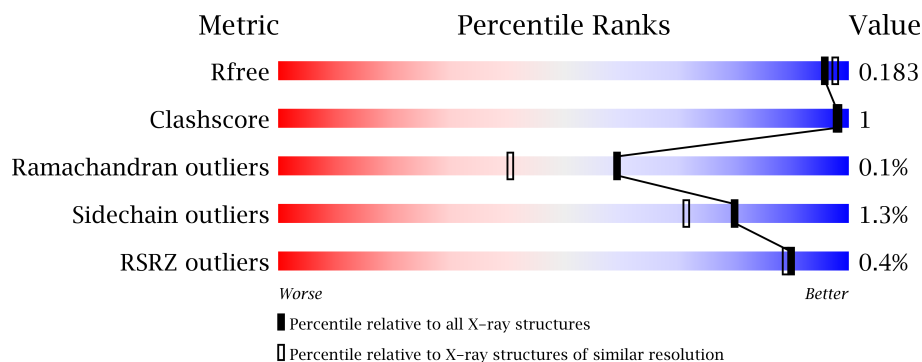
The following versions of software and data (see [references](#)) were used in the production of this report:

MolProbity : 4.02b-467  
Mogul : 1.16 November 2013  
Xtriage (Phenix) : dev-1439  
EDS : stable23828  
Percentile statistics : 21963  
Refmac : 5.8.0049  
CCP4 : 6.3.0 (Settle)  
Ideal geometry (proteins) : Engh & Huber (2001)  
Ideal geometry (DNA, RNA) : Parkinson et. al. (1996)  
Validation Pipeline (wwPDB-VP) : stable23828

# 1 Overall quality at a glance

The reported resolution of this entry is 1.80 Å.

Percentile scores (ranging between 0-100) for global validation metrics of the entry are shown in the following graphic. The table shows the number of entries on which the scores are based.



Metric	Whole archive (#Entries)	Similar resolution (#Entries, resolution range(Å))
$R_{free}$	66092	3513 (1.80-1.80)
Clashscore	79885	4461 (1.80-1.80)
Ramachandran outliers	78287	4404 (1.80-1.80)
Sidechain outliers	78261	4403 (1.80-1.80)
RSRZ outliers	66119	3515 (1.80-1.80)

The table below summarises the geometric issues observed across the polymeric chains and their fit to the electron density. The red, orange, yellow and green segments on the lower bar indicate the fraction of residues that contain outliers for  $\geq 3$ , 2, 1 and 0 types of geometric quality criteria. The upper red bar (where present) indicates the fraction of residues that have poor fit to the electron density.

Mol	Chain	Length	Quality of chain
1	A	501	
1	B	501	

The following table lists non-polymeric compounds that are outliers for geometric or electron-density-fit criteria:

Mol	Type	Chain	Res	Geometry	Electron density
3	PO4	A	602	-	X
3	PO4	A	603	-	X
3	PO4	B	602	-	X
3	PO4	B	603	-	X
4	EDO	B	604	-	X

## 2 Entry composition

There are 5 unique types of molecules in this entry. The entry contains 8624 atoms, of which 0 are hydrogen and 0 are deuterium.

In the tables below, the ZeroOcc column contains the number of atoms modelled with zero occupancy, the AltConf column contains the number of residues with at least one atom in alternate conformation and the Trace column contains the number of residues modelled with at most 2 atoms.

- Molecule 1 is a protein called Nicotinamide phosphoribosyltransferase.

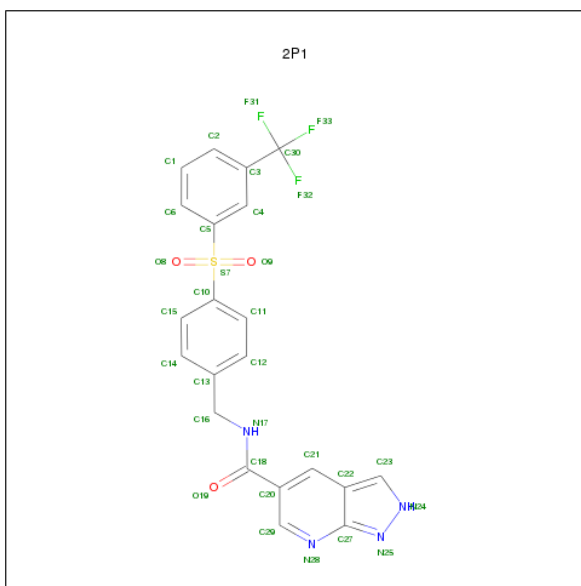
Mol	Chain	Residues	Atoms					ZeroOcc	AltConf	Trace
1	A	465	Total	C	N	O	S	0	0	0
			3733	2405	615	706	7			
1	B	466	Total	C	N	O	S	0	0	0
			3745	2411	617	710	7			

There are 22 discrepancies between the modelled and reference sequences:

Chain	Residue	Modelled	Actual	Comment	Reference
A	165	PHE	SER	ENGINEERED MUTATION	UNP P43490
A	492	LEU	-	EXPRESSION TAG	UNP P43490
A	493	GLU	-	EXPRESSION TAG	UNP P43490
A	494	HIS	-	EXPRESSION TAG	UNP P43490
A	495	HIS	-	EXPRESSION TAG	UNP P43490
A	496	HIS	-	EXPRESSION TAG	UNP P43490
A	497	HIS	-	EXPRESSION TAG	UNP P43490
A	498	HIS	-	EXPRESSION TAG	UNP P43490
A	499	HIS	-	EXPRESSION TAG	UNP P43490
A	500	HIS	-	EXPRESSION TAG	UNP P43490
A	501	HIS	-	EXPRESSION TAG	UNP P43490
B	165	PHE	SER	ENGINEERED MUTATION	UNP P43490
B	492	LEU	-	EXPRESSION TAG	UNP P43490
B	493	GLU	-	EXPRESSION TAG	UNP P43490
B	494	HIS	-	EXPRESSION TAG	UNP P43490
B	495	HIS	-	EXPRESSION TAG	UNP P43490
B	496	HIS	-	EXPRESSION TAG	UNP P43490
B	497	HIS	-	EXPRESSION TAG	UNP P43490
B	498	HIS	-	EXPRESSION TAG	UNP P43490
B	499	HIS	-	EXPRESSION TAG	UNP P43490
B	500	HIS	-	EXPRESSION TAG	UNP P43490
B	501	HIS	-	EXPRESSION TAG	UNP P43490

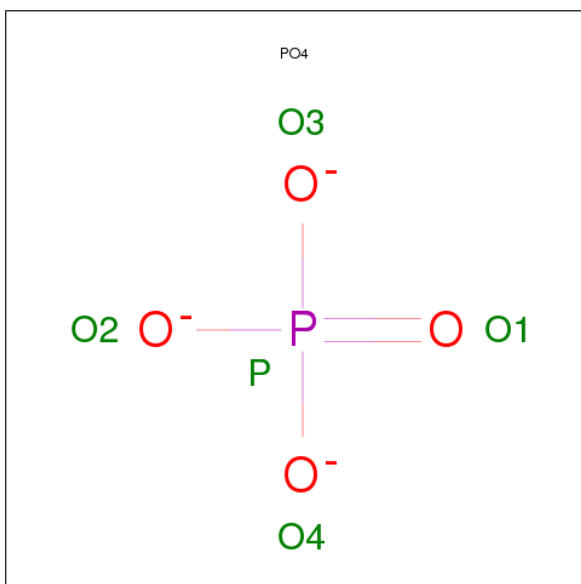
- Molecule 2 is N-(4-{[3-(TRIFLUOROMETHYL)PHENYL]SULFONYL}BENZYL)-2H-PYRAZOLO[3,4-B]PYRIDINE-5-CARBOXAMIDE (three-letter code: 2P1) (formula:

C<sub>21</sub>H<sub>15</sub>F<sub>3</sub>N<sub>4</sub>O<sub>3</sub>S).



Mol	Chain	Residues	Atoms						ZeroOcc	AltConf
2	A	1	Total	C	F	N	O	S	0	0
			32	21	3	4	3	1		
2	B	1	Total	C	F	N	O	S	0	0
			32	21	3	4	3	1		

- Molecule 3 is PHOSPHATE ION (three-letter code: PO4) (formula: O<sub>4</sub>P).



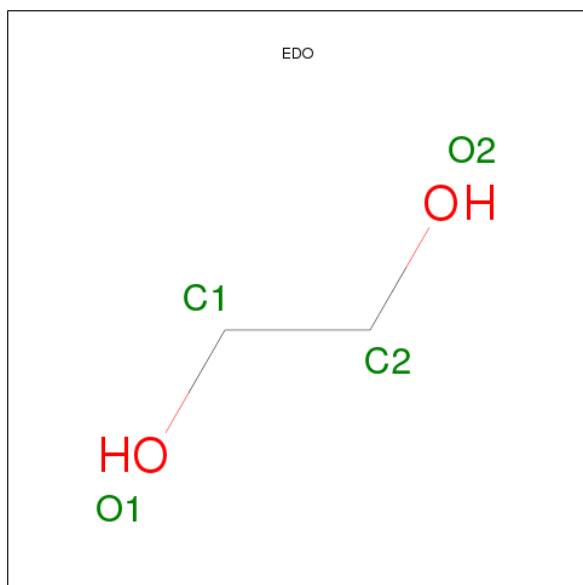
Mol	Chain	Residues	Atoms			ZeroOcc	AltConf
3	A	1	Total	O	P	0	0
			5	4	1		

*Continued on next page...*

Continued from previous page...

Mol	Chain	Residues	Atoms			ZeroOcc	AltConf
3	A	1	Total	O	P	0	0
			5	4	1		
3	B	1	Total	O	P	0	0
			5	4	1		
3	B	1	Total	O	P	0	0
			5	4	1		

- Molecule 4 is 1,2-ETHANEDIOL (three-letter code: EDO) (formula: C<sub>2</sub>H<sub>6</sub>O<sub>2</sub>).



Mol	Chain	Residues	Atoms			ZeroOcc	AltConf
4	A	1	Total	C	O	0	0
			4	2	2		
4	B	1	Total	C	O	0	0
			4	2	2		
4	B	1	Total	C	O	0	0
			4	2	2		

- Molecule 5 is water.

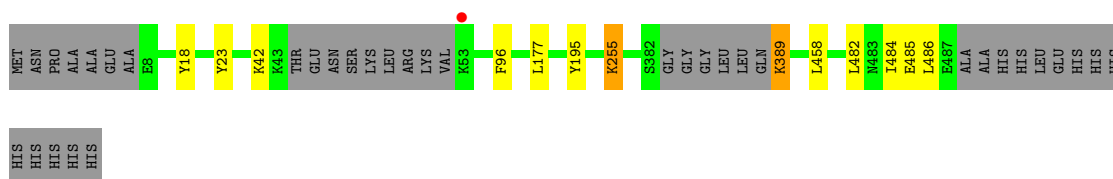
Mol	Chain	Residues	Atoms		ZeroOcc	AltConf
5	A	542	Total	O	0	0
			542	542		
5	B	508	Total	O	0	0
			508	508		

### 3 Residue-property plots

These plots are drawn for all protein, RNA and DNA chains in the entry. The first graphic for a chain summarises the proportions of errors displayed in the second graphic. The second graphic shows the sequence view annotated by issues in geometry and electron density. Residues are color-coded according to the number of geometric quality criteria for which they contain at least one outlier: green = 0, yellow = 1, orange = 2 and red = 3 or more. A red dot above a residue indicates a poor fit to the electron density ( $RSRZ > 2$ ). Stretches of 2 or more consecutive residues without any outlier are shown as a green connector. Residues present in the sample, but not in the model, are shown in grey.

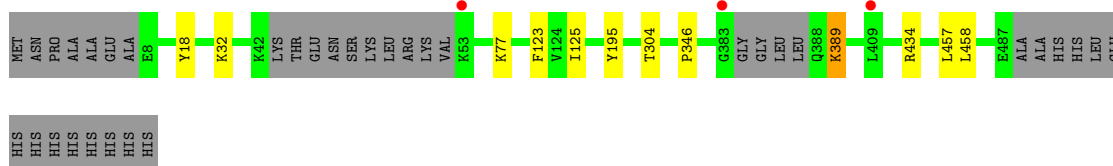
- Molecule 1: Nicotinamide phosphoribosyltransferase

Chain A: 



- Molecule 1: Nicotinamide phosphoribosyltransferase

Chain B: 



## 4 Data and refinement statistics

Property	Value	Source
Space group	P 1 21 1	Depositor
Cell constants a, b, c, $\alpha$ , $\beta$ , $\gamma$	60.45Å 106.40Å 83.63Å 90.00° 96.83° 90.00°	Depositor
Resolution (Å)	46.46 – 1.80 46.46 – 1.80	Depositor EDS
% Data completeness (in resolution range)	99.1 (46.46-1.80) 99.2 (46.46-1.80)	Depositor EDS
$R_{merge}$	(Not available)	Depositor
$R_{sym}$	(Not available)	Depositor
$\langle I/\sigma(I) \rangle$ <sup>1</sup>	2.43 (at 1.79Å)	Xtriage
Refinement program	PHENIX (phenix.refine: 1.8.2_1309)	Depositor
R, $R_{free}$	0.152 , 0.183 0.152 , 0.183	Depositor DCC
$R_{free}$ test set	4834 reflections (5.02%)	DCC
Wilson B-factor (Å <sup>2</sup> )	14.1	Xtriage
Anisotropy	0.587	Xtriage
Bulk solvent $k_{sol}$ (e/Å <sup>3</sup> ), $B_{sol}$ (Å <sup>2</sup> )	0.36 , 33.0	EDS
Estimated twinning fraction	No twinning to report.	Xtriage
L-test for twinning	$\langle  L  \rangle = 0.50$ , $\langle L^2 \rangle = 0.33$	Xtriage
Outliers	0 of 96318 reflections	Xtriage
$F_o, F_c$ correlation	0.96	EDS
Total number of atoms	8624	wwPDB-VP
Average B, all atoms (Å <sup>2</sup> )	14.0	wwPDB-VP

Xtriage's analysis on translational NCS is as follows: *The largest off-origin peak in the Patterson function is 4.34% of the height of the origin peak. No significant pseudotranslation is detected.*

<sup>1</sup>Intensities estimated from amplitudes.

## 5 Model quality

### 5.1 Standard geometry

Bond lengths and bond angles in the following residue types are not validated in this section: 2P1, PO4, EDO

The Z score for a bond length (or angle) is the number of standard deviations the observed value is removed from the expected value. A bond length (or angle) with  $|Z| > 5$  is considered an outlier worth inspection. RMSZ is the root-mean-square of all Z scores of the bond lengths (or angles).

Mol	Chain	Bond lengths		Bond angles	
		RMSZ	# Z  >5	RMSZ	# Z  >5
1	A	0.35	0/3821	0.51	0/5176
1	B	0.35	0/3833	0.49	0/5191
All	All	0.35	0/7654	0.50	0/10367

There are no bond length outliers.

There are no bond angle outliers.

There are no chirality outliers.

There are no planarity outliers.

### 5.2 Close contacts

In the following table, the Non-H and H(model) columns list the number of non-hydrogen atoms and hydrogen atoms in the chain respectively. The H(added) column lists the number of hydrogens added by MolProbity. The Clashes column lists the number of clashes within the asymmetric unit, and the number in parentheses is this value normalized per 1000 atoms of the molecule in the chain. The Symm-Clashes column gives symmetry related clashes, in the same way as for the Clashes column.

Mol	Chain	Non-H	H(model)	H(added)	Clashes	Symm-Clashes
1	A	3733	0	3703	6	0
1	B	3745	0	3716	5	0
2	A	32	0	0	0	0
2	B	32	0	0	0	0
3	A	10	0	0	1	0
3	B	10	0	0	0	0
4	A	4	0	6	0	0
4	B	8	0	12	0	0
5	A	542	0	0	3	1
5	B	508	0	0	0	1

*Continued on next page...*



*Continued from previous page...*

Mol	Chain	Non-H	H(model)	H(added)	Clashes	Symm-Clashes
All	All	8624	0	7437	11	1

Clashscore is defined as the number of clashes calculated for the entry per 1000 atoms (including hydrogens) of the entry. The overall clashscore for this entry is 1.

All (11) close contacts within the same asymmetric unit are listed below.

Atom-1	Atom-2	Distance(Å)	Clash(Å)
1:B:434:ARG:HG2	1:B:457:LEU:HD11	1.81	0.62
1:A:23:TYR:O	5:A:1100:HOH:O	2.17	0.59
1:A:42:LYS:NZ	5:A:1032:HOH:O	2.40	0.55
3:A:603:PO4:O1	5:A:814:HOH:O	2.19	0.54
1:A:177:LEU:HD22	1:A:484:ILE:HD11	1.92	0.51
1:A:389:LYS:HB3	1:B:389:LYS:HB3	1.95	0.48
1:A:482:LEU:HB2	1:A:485:GLU:HG3	1.98	0.45
1:B:123:PHE:HB3	1:B:125:ILE:HD11	1.99	0.44
1:B:304:THR:HG23	1:B:346:PRO:HB2	2.03	0.41
1:B:77:LYS:HB2	1:B:77:LYS:HE3	1.88	0.41
1:A:255:LYS:NZ	1:A:255:LYS:H	2.20	0.40

All (1) symmetry-related close contacts are listed below. The label for Atom-2 includes the symmetry operator and encoded unit-cell translations to be applied.

Atom-1	Atom-2	Distance(Å)	Clash(Å)
5:A:1055:HOH:O	5:B:989:HOH:O[2_646]	2.15	0.05

## 5.3 Torsion angles

### 5.3.1 Protein backbone ⓘ

In the following table, the Percentiles column shows the percent Ramachandran outliers of the chain as a percentile score with respect to all X-ray entries followed by that with respect to entries of similar resolution.

The Analysed column shows the number of residues for which the backbone conformation was analysed, and the total number of residues.

Mol	Chain	Analysed	Favoured	Allowed	Outliers	Percentiles	
1	A	459/501 (92%)	448 (98%)	10 (2%)	1 (0%)	56	38
1	B	460/501 (92%)	450 (98%)	10 (2%)	0	100	100
All	All	919/1002 (92%)	898 (98%)	20 (2%)	1 (0%)	59	41

All (1) Ramachandran outliers are listed below:

Mol	Chain	Res	Type
1	A	96	PHE

### 5.3.2 Protein sidechains ⓘ

In the following table, the Percentiles column shows the percent sidechain outliers of the chain as a percentile score with respect to all X-ray entries followed by that with respect to entries of similar resolution. The Analysed column shows the number of residues for which the sidechain conformation was analysed, and the total number of residues.

Mol	Chain	Analysed	Rotameric	Outliers	Percentiles	
1	A	410/440 (93%)	404 (98%)	6 (2%)	76	66
1	B	412/440 (94%)	407 (99%)	5 (1%)	82	74
All	All	822/880 (93%)	811 (99%)	11 (1%)	80	71

All (11) residues with a non-rotameric sidechain are listed below:

Mol	Chain	Res	Type
1	A	18	TYR
1	A	195	TYR
1	A	255	LYS
1	A	389	LYS
1	A	458	LEU
1	A	486	LEU
1	B	18	TYR
1	B	32	LYS
1	B	195	TYR
1	B	389	LYS
1	B	458	LEU

Some sidechains can be flipped to improve hydrogen bonding and reduce clashes. There are no such sidechains identified.

### 5.3.3 RNA ⓘ

There are no RNA chains in this entry.

## 5.4 Non-standard residues in protein, DNA, RNA chains ⓘ

There are no non-standard protein/DNA/RNA residues in this entry.

## 5.5 Carbohydrates ⓘ

There are no carbohydrates in this entry.

## 5.6 Ligand geometry ⓘ

9 ligands are modelled in this entry.

In the following table, the Counts columns list the number of bonds (or angles) for which Mogul statistics could be retrieved, the number of bonds (or angles) that are observed in the model and the number of bonds (or angles) that are defined in the chemical component dictionary. The Link column lists molecule types, if any, to which the group is linked. The Z score for a bond length (or angle) is the number of standard deviations the observed value is removed from the expected value. A bond length (or angle) with  $|Z| > 2$  is considered an outlier worth inspection. RMSZ is the root-mean-square of all Z scores of the bond lengths (or angles).

Mol	Type	Chain	Res	Link	Bond lengths			Bond angles		
					Counts	RMSZ	# $ Z  > 2$	Counts	RMSZ	# $ Z  > 2$
2	2P1	A	601	-	35,35,35	1.17	3 (8%)	49,52,52	1.68	10 (20%)
3	PO4	A	602	-	4,4,4	0.20	0	6,6,6	0.29	0
3	PO4	A	603	-	4,4,4	0.39	0	6,6,6	0.30	0
4	EDO	A	604	-	3,3,3	0.57	0	2,2,2	0.51	0
2	2P1	B	601	-	35,35,35	1.19	3 (8%)	49,52,52	1.66	11 (22%)
3	PO4	B	602	-	4,4,4	0.34	0	6,6,6	0.30	0
3	PO4	B	603	-	4,4,4	0.30	0	6,6,6	0.31	0
4	EDO	B	604	-	3,3,3	0.48	0	2,2,2	0.42	0
4	EDO	B	605	-	3,3,3	0.49	0	2,2,2	0.55	0

In the following table, the Chirals column lists the number of chiral outliers, the number of chiral centers analysed, the number of these observed in the model and the number defined in the chemical component dictionary. Similar counts are reported in the Torsion and Rings columns. '-' means no outliers of that kind were identified.

Mol	Type	Chain	Res	Link	Chirals	Torsions	Rings
2	2P1	A	601	-	-	0/27/27/27	0/4/4/4
3	PO4	A	602	-	-	0/0/0/0	0/0/0/0
3	PO4	A	603	-	-	0/0/0/0	0/0/0/0
4	EDO	A	604	-	-	0/1/1/1	0/0/0/0
2	2P1	B	601	-	-	0/27/27/27	0/4/4/4
3	PO4	B	602	-	-	0/0/0/0	0/0/0/0
3	PO4	B	603	-	-	0/0/0/0	0/0/0/0
4	EDO	B	604	-	-	0/1/1/1	0/0/0/0
4	EDO	B	605	-	-	0/1/1/1	0/0/0/0

All (6) bond length outliers are listed below:

Mol	Chain	Res	Type	Atoms	Z	Observed(Å)	Ideal(Å)
2	B	601	2P1	C23-N24	-3.39	1.30	1.33
2	A	601	2P1	C23-N24	-3.07	1.31	1.33
2	A	601	2P1	C27-N28	-2.76	1.32	1.37
2	A	601	2P1	C23-C22	2.66	1.46	1.40
2	B	601	2P1	C27-N28	-2.63	1.33	1.37
2	B	601	2P1	C23-C22	2.55	1.46	1.40

All (21) bond angle outliers are listed below:

Mol	Chain	Res	Type	Atoms	Z	Observed(°)	Ideal(°)
2	B	601	2P1	C20-C29-N28	-4.86	121.40	125.25
2	A	601	2P1	C29-N28-C27	4.55	121.96	116.85
2	B	601	2P1	C29-N28-C27	4.48	121.88	116.85
2	A	601	2P1	C20-C29-N28	-4.42	121.75	125.25
2	A	601	2P1	O8-S7-O9	3.66	124.35	119.11
2	B	601	2P1	C21-C20-C29	3.56	119.97	116.59
2	B	601	2P1	C3-C4-C5	3.35	120.69	118.89
2	A	601	2P1	C5-S7-C10	-3.22	98.93	104.58
2	B	601	2P1	O8-S7-O9	2.96	123.35	119.11
2	A	601	2P1	C21-C20-C29	2.91	119.36	116.59
2	A	601	2P1	O9-S7-C5	-2.84	105.12	107.94
2	B	601	2P1	C5-S7-C10	-2.83	99.63	104.58
2	A	601	2P1	C3-C4-C5	2.63	120.30	118.89
2	A	601	2P1	N25-C27-N28	2.49	132.64	125.81
2	B	601	2P1	C20-C21-C22	-2.47	116.69	121.25
2	B	601	2P1	N25-C27-N28	2.46	132.56	125.81
2	A	601	2P1	C16-N17-C18	-2.45	115.29	121.79
2	B	601	2P1	O8-S7-C10	2.32	110.25	107.94
2	A	601	2P1	C20-C21-C22	-2.27	117.07	121.25
2	B	601	2P1	O9-S7-C5	-2.13	105.83	107.94
2	B	601	2P1	F33-C30-C3	-2.01	108.46	112.99

There are no chirality outliers.

There are no torsion outliers.

There are no ring outliers.

## 5.7 Other polymers ⓘ

There are no such residues in this entry.

## 5.8 Polymer linkage issues

There are no chain breaks in this entry.

## 6 Fit of model and data ⓘ

### 6.1 Protein, DNA and RNA chains ⓘ

In the following table, the column labelled ‘#RSRZ> 2’ contains the number (and percentage) of RSRZ outliers, followed by percent RSRZ outliers for the chain as percentile scores relative to all X-ray entries and entries of similar resolution. The OWAB column contains the minimum, median, 95<sup>th</sup> percentile and maximum values of the occupancy-weighted average B-factor per residue. The column labelled ‘Q< 0.9’ lists the number of (and percentage) of residues with an average occupancy less than 0.9.

Mol	Chain	Analysed	<RSRZ>	#RSRZ>2	OWAB(Å <sup>2</sup> )	Q<0.9
1	A	465/501 (92%)	-0.49	1 (0%) 93 91	5, 11, 24, 58	0
1	B	466/501 (93%)	-0.44	3 (0%) 86 85	5, 10, 25, 68	0
All	All	931/1002 (92%)	-0.46	4 (0%) 90 89	5, 11, 25, 68	0

All (4) RSRZ outliers are listed below:

Mol	Chain	Res	Type	RSRZ
1	B	383	GLY	2.7
1	B	409	LEU	2.4
1	A	53	LYS	2.3
1	B	53	LYS	2.2

### 6.2 Non-standard residues in protein, DNA, RNA chains ⓘ

There are no non-standard protein/DNA/RNA residues in this entry.

### 6.3 Carbohydrates ⓘ

There are no carbohydrates in this entry.

### 6.4 Ligands ⓘ

In the following table, the Atoms column lists the number of modelled atoms in the group and the number defined in the chemical component dictionary. LLDF column lists the quality of electron density of the group with respect to its neighbouring residues in protein, DNA or RNA chains. The B-factors column lists the minimum, median, 95<sup>th</sup> percentile and maximum values of B factors of atoms in the group. The column labelled ‘Q< 0.9’ lists the number of atoms with occupancy less than 0.9.

Mol	Type	Chain	Res	Atoms	RSR	LLDF	B-factors( $\text{\AA}^2$ )	Q<0.9
3	PO4	B	603	5/5	0.22	16.22	5,28,46,50	0
3	PO4	A	602	5/5	0.20	8.25	8,26,36,40	0
4	EDO	B	604	4/4	0.12	5.26	9,10,12,16	0
3	PO4	A	603	5/5	0.13	5.15	32,37,41,46	0
3	PO4	B	602	5/5	0.12	3.25	31,34,39,39	0
4	EDO	A	604	4/4	0.11	0.52	14,14,14,16	0
4	EDO	B	605	4/4	0.11	0.06	7,12,12,12	0
2	2P1	A	601	32/32	0.07	-0.07	7,14,18,25	0
2	2P1	B	601	32/32	0.07	-0.56	5,11,19,24	0

## 6.5 Other polymers ⓘ

There are no such residues in this entry.