



Full wwPDB X-ray Structure Validation Report

Feb 26, 2014 – 08:26 PM GMT

PDB ID : 2O4V
Title : An arginine ladder in OprP mediates phosphate specific transfer across the outer membrane
Authors : Moraes, T.F.; Bains, M.; Hancock, R.E.; Strynadka, N.C.
Deposited on : 2006-12-05
Resolution : 1.94 Å(reported)

This is a full wwPDB validation report for a publicly released PDB entry.
We welcome your comments at validation@mail.wwpdb.org
A user guide is available at <http://wwpdb.org/ValidationPDFNotes.html>

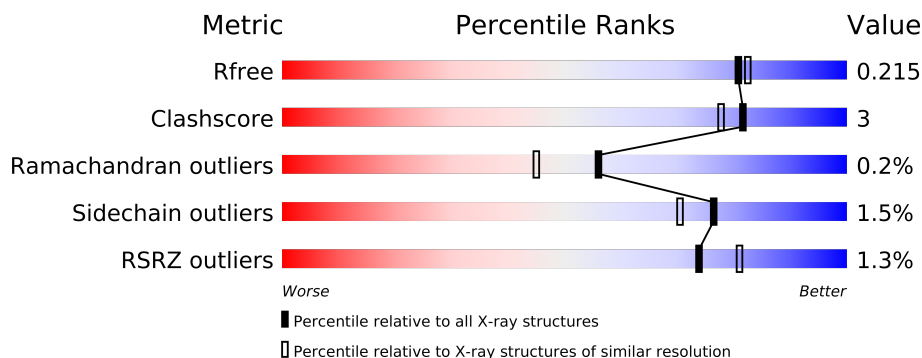
The following versions of software and data (see [references](#)) were used in the production of this report:

MolProbity : 4.02b-467
Mogul : 1.15 2013
Xtriage (Phenix) : **FAILED**
EDS : stable22639
Percentile statistics : 21963
Refmac : 5.8.0049
CCP4 : 6.3.0 (Settle)
Ideal geometry (proteins) : Engh & Huber (2001)
Ideal geometry (DNA, RNA) : Parkinson et. al. (1996)
Validation Pipeline (wwPDB-VP) : stable22683

1 Overall quality at a glance

The reported resolution of this entry is 1.94 Å.

Percentile scores (ranging between 0-100) for global validation metrics of the entry are shown in the following graphic. The table shows the number of entries on which the scores are based.



Metric	Whole archive (#Entries)	Similar resolution (#Entries, resolution range(Å))
R_{free}	66092	2024 (1.96-1.92)
Clashscore	79885	2281 (1.96-1.92)
Ramachandran outliers	78287	2255 (1.96-1.92)
Sidechain outliers	78261	2255 (1.96-1.92)
RSRZ outliers	66119	2024 (1.96-1.92)

The table below summarises the geometric issues observed across the polymeric chains and their fit to the electron density. The red, orange, yellow and green segments on the lower bar indicate the fraction of residues that contain outliers for ≥ 3 , 2, 1 and 0 types of geometric quality criteria. The upper red bar (where present) indicates the fraction of residues that have poor fit to the electron density.

Mol	Chain	Length	Quality of chain
1	A	411	
1	B	411	
1	C	411	

The following table lists non-polymeric compounds that are outliers for geometric or electron-density-fit criteria:

Mol	Type	Chain	Res	Geometry	Electron density
2	CA	A	701	-	X
2	CA	C	702	-	X
3	PO4	B	804	-	X
4	CL	A	901	-	X
5	C8E	A	1295	-	X

Continued on next page...

Continued from previous page...

Mol	Type	Chain	Res	Geometry	Electron density
5	C8E	A	1297	-	X
5	C8E	A	1298	-	X
5	C8E	C	1296	-	X
6	GOL	A	802	-	X
6	GOL	C	801	-	X

2 Entry composition

There are 7 unique types of molecules in this entry. The entry contains 10352 atoms, of which 0 are hydrogen and 0 are deuterium.

In the tables below, the ZeroOcc column contains the number of atoms modelled with zero occupancy, the AltConf column contains the number of residues with at least one atom in alternate conformation and the Trace column contains the number of residues modelled with at most 2 atoms.

- Molecule 1 is a protein called Porin P.

Mol	Chain	Residues	Atoms					ZeroOcc	AltConf	Trace
1	A	411	Total	C	N	O	S	0	0	0
			3200	2005	554	637	4			
1	B	411	Total	C	N	O	S	0	0	0
			3200	2005	554	637	4			
1	C	411	Total	C	N	O	S	0	1	0
			3206	2010	555	637	4			

- Molecule 2 is CALCIUM ION (three-letter code: CA) (formula: Ca).

Mol	Chain	Residues	Atoms		ZeroOcc	AltConf
2	B	1	Total	Ca	0	0
			1	1		
2	A	1	Total	Ca	0	0
			1	1		
2	C	1	Total	Ca	0	0
			1	1		

- Molecule 3 is PHOSPHATE ION (three-letter code: PO4) (formula: O₄P).

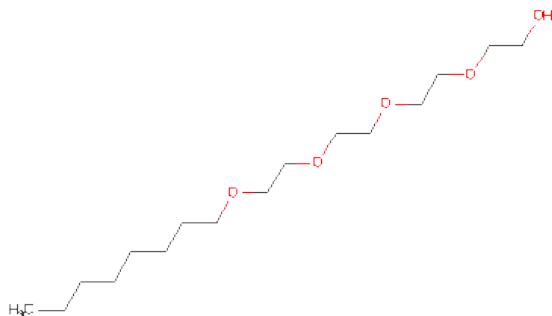


Mol	Chain	Residues	Atoms			ZeroOcc	AltConf
3	C	1	Total	O	P	0	0
			5	4	1		
3	B	1	Total	O	P	0	0
			5	4	1		
3	A	1	Total	O	P	0	0
			5	4	1		

- Molecule 4 is CHLORIDE ION (three-letter code: CL) (formula: Cl).

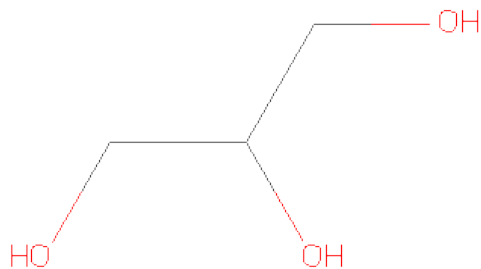
Mol	Chain	Residues	Atoms		ZeroOcc	AltConf
4	A	1	Total	Cl	0	0
			1	1		

- Molecule 5 is (HYDROXYETHYLOXY)TRI(ETHYLOXY)OCTANE (three-letter code: C8E) (formula: C₁₆H₃₄O₅).



Mol	Chain	Residues	Atoms			ZeroOcc	AltConf
5	A	1	Total	C	O	0	0
			21	16	5		
5	C	1	Total	C	O	0	0
			21	16	5		
5	A	1	Total	C	O	0	0
			21	16	5		
5	A	1	Total	C	O	0	0
			21	16	5		

- Molecule 6 is GLYCEROL (three-letter code: GOL) (formula: $C_3H_8O_3$).



Mol	Chain	Residues	Atoms			ZeroOcc	AltConf
6	C	1	Total	C	O	0	0
			6	3	3		
6	A	1	Total	C	O	0	0
			6	3	3		

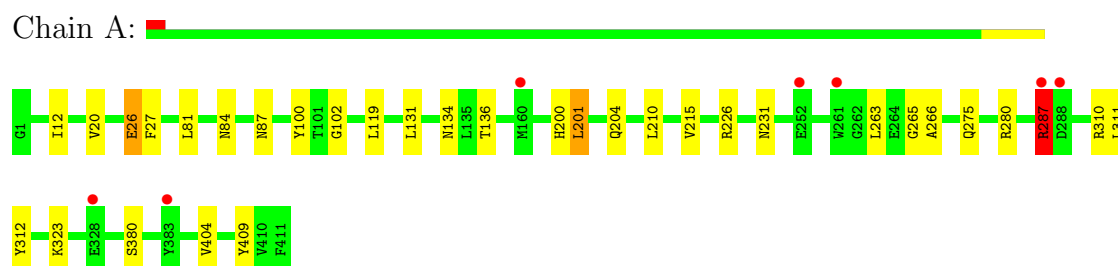
- Molecule 7 is water.

Mol	Chain	Residues	Atoms		ZeroOcc	AltConf
7	A	221	Total	O	0	0
			221	221		
7	B	204	Total	O	0	0
			204	204		
7	C	206	Total	O	0	0
			206	206		

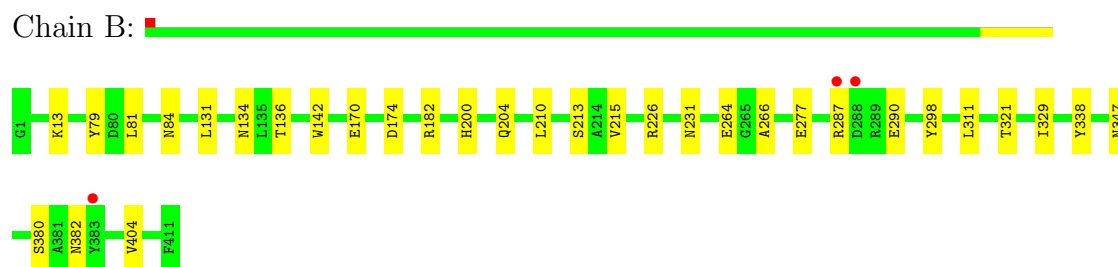
3 Residue-property plots i

These plots are drawn for all protein, RNA and DNA chains in the entry. The first graphic for a chain summarises the proportions of errors displayed in the second graphic. The second graphic shows the sequence view annotated by issues in geometry and electron density. Residues are color-coded according to the number of geometric quality criteria for which they contain at least one outlier: green = 0, yellow = 1, orange = 2 and red = 3 or more. A red dot above a residue indicates a poor fit to the electron density ($RSRZ > 2$). Stretches of 2 or more consecutive residues without any outlier are shown as a green connector. Residues present in the sample, but not in the model, are shown in grey.

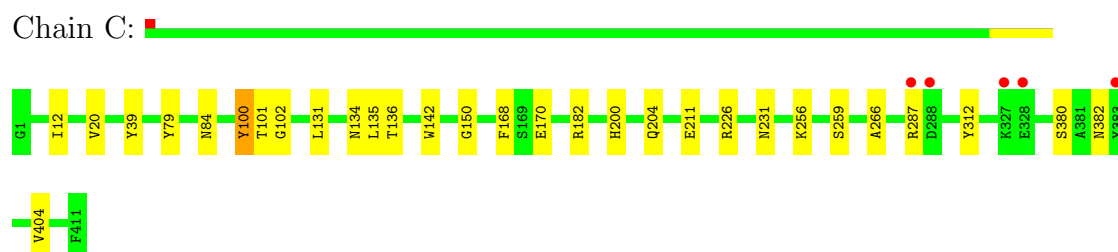
• Molecule 1: Porin P



• Molecule 1: Porin P



• Molecule 1: Porin P



4 Data and refinement statistics

Xtriage (Phenix) failed to run properly - this section will therefore be incomplete.

Property	Value	Source
Space group	C 1 2 1	Depositor
Cell constants a, b, c, α , β , γ	255.13Å 142.77Å 62.02Å 90.00° 99.49° 90.00°	Depositor
Resolution (Å)	62.90 – 1.94 62.91 – 1.94	Depositor EDS
% Data completeness (in resolution range)	91.1 (62.90-1.94) 91.1 (62.91-1.94)	Depositor EDS
R_{merge}	0.07	Depositor
R_{sym}	0.07	Depositor
Refinement program	REFMAC 5.2.0019	Depositor
R, R_{free}	0.174 , 0.194 0.197 , 0.215	Depositor DCC
R_{free} test set	7364 reflections (5.01%)	DCC
Bulk solvent k_{sol} (e/Å ³), B_{sol} (Å ²)	0.38 , 33.6	EDS
Estimated twinning fraction	No twinning to report.	Xtriage
F_o, F_c correlation	0.94	EDS
Total number of atoms	10352	wwPDB-VP
Average B, all atoms (Å ²)	19.0	wwPDB-VP

5 Model quality

5.1 Standard geometry

Bond lengths and bond angles in the following residue types are not validated in this section: GOL, PO4, CA, C8E, CL

The Z score for a bond length (or angle) is the number of standard deviations the observed value is removed from the expected value. A bond length (or angle) with $|Z| > 5$ is considered an outlier worth inspection. RMSZ is the root-mean-square of all Z scores of the bond lengths (or angles).

Mol	Chain	Bond lengths		Bond angles	
		RMSZ	# Z >5	RMSZ	# Z >5
1	A	0.44	0/3267	0.59	0/4420
1	B	0.44	0/3267	0.58	0/4420
1	C	0.44	0/3276	0.62	1/4431 (0.0%)
All	All	0.44	0/9810	0.60	1/13271 (0.0%)

There are no bond length outliers.

All (1) bond angle outliers are listed below:

Mol	Chain	Res	Type	Atoms	Z	Observed(°)	Ideal(°)
1	C	100	TYR	C-N-CA	6.42	137.74	121.70

There are no chirality outliers.

There are no planarity outliers.

5.2 Close contacts

In the following table, the Non-H and H(model) columns list the number of non-hydrogen atoms and hydrogen atoms in the chain respectively. The H(added) column lists the number of hydrogens added by MolProbity. The Clashes column lists the number of clashes within the asymmetric unit, and the number in parentheses is this value normalized per 1000 atoms of the molecule in the chain. The Symm-Clashes column gives symmetry related clashes, in the same way as for the Clashes column.

Mol	Chain	Non-H	H(model)	H(added)	Clashes	Symm-Clashes
1	A	3200	0	3034	22	0
1	B	3200	0	3034	20	0
1	C	3206	0	3047	21	0
2	A	1	0	0	0	0
2	B	1	0	0	0	0

Continued on next page...

Continued from previous page...

Mol	Chain	Non-H	H(model)	H(added)	Clashes	Symm-Clashes
2	C	1	0	0	0	0
3	A	5	0	0	0	0
3	B	5	0	0	0	0
3	C	5	0	0	0	0
4	A	1	0	0	0	0
5	A	63	0	102	4	0
5	C	21	0	34	1	0
6	A	6	0	8	0	0
6	C	6	0	8	0	0
7	A	221	0	0	1	0
7	B	204	0	0	0	0
7	C	206	0	0	0	0
All	All	10352	0	9267	60	0

Clashscore is defined as the number of clashes calculated for the entry per 1000 atoms (including hydrogens) of the entry. The overall clashscore for this entry is 3.

All (60) close contacts within the same asymmetric unit are listed below.

Atom-1	Atom-2	Distance(Å)	Clash(Å)
1:C:142:TRP:HE3	1:C:182:ARG:HD2	1.50	0.75
1:A:12:ILE:HD11	1:C:12:ILE:HD13	1.69	0.74
1:B:142:TRP:HE3	1:B:182:ARG:HD2	1.53	0.72
1:B:290:GLU:H	1:B:347:ASN:HD21	1.35	0.72
1:A:26:GLU:HG2	1:A:27:PHE:CE2	2.32	0.63
1:C:142:TRP:CE3	1:C:182:ARG:HD2	2.34	0.63
1:C:200:HIS:HD2	1:C:312:TYR:OH	1.84	0.60
1:B:142:TRP:CE3	1:B:182:ARG:HD2	2.38	0.58
1:C:131:LEU:H	1:C:382:ASN:HD21	1.52	0.58
1:B:131:LEU:HD12	1:B:404:VAL:HG13	1.87	0.56
1:B:134:ASN:HD22	1:B:136:THR:H	1.53	0.55
1:A:200:HIS:HB3	1:A:266:ALA:HB3	1.87	0.55
1:B:131:LEU:H	1:B:382:ASN:HD21	1.53	0.55
1:B:170:GLU:OE2	1:B:182:ARG:HD3	2.07	0.55
1:A:265:GLY:HA3	5:A:1298:C8E:H42	1.89	0.55
1:C:170:GLU:OE2	1:C:182:ARG:HD3	2.08	0.53
1:B:84:ASN:ND2	1:B:226:ARG:HH21	2.07	0.53
1:A:210:LEU:HD22	1:A:215:VAL:HG21	1.92	0.52
1:A:81:LEU:HB3	1:B:79:TYR:CE1	2.44	0.52
1:B:290:GLU:H	1:B:347:ASN:ND2	2.03	0.52
1:B:131:LEU:HD21	1:B:380:SER:HB2	1.93	0.50
1:A:275:GLN:HE22	1:A:310:ARG:HH22	1.57	0.50
1:C:211:GLU:OE2	1:C:256:LYS:HG3	2.12	0.50

Continued on next page...

Continued from previous page...

Atom-1	Atom-2	Distance(Å)	Clash(Å)
1:B:81:LEU:HB3	1:C:79:TYR:CE1	2.46	0.50
1:C:131:LEU:H	1:C:382:ASN:ND2	2.11	0.49
1:A:200:HIS:HD2	1:A:312:TYR:OH	1.96	0.49
1:B:210:LEU:HD22	1:B:215:VAL:HG21	1.94	0.48
1:C:84:ASN:ND2	1:C:226:ARG:HH21	2.11	0.48
1:A:84:ASN:ND2	1:A:226:ARG:HH11	2.11	0.48
1:A:84:ASN:HD21	1:A:231:ASN:H	1.62	0.48
1:C:150:GLY:HA2	5:C:1296:C8E:H72	1.94	0.48
1:A:134:ASN:HD22	1:A:136:THR:H	1.61	0.48
1:C:134:ASN:HD22	1:C:136:THR:H	1.61	0.48
1:A:131:LEU:HD12	1:A:404:VAL:HG13	1.96	0.47
1:B:264:GLU:HB3	1:B:277:GLU:HG2	1.98	0.46
1:A:131:LEU:HD21	1:A:380:SER:HB2	1.96	0.45
1:A:100:TYR:CZ	1:A:102:GLY:HA3	2.51	0.45
1:B:200:HIS:HB3	1:B:266:ALA:HB3	1.98	0.45
1:C:131:LEU:HD12	1:C:404:VAL:HG13	1.98	0.45
1:C:100:TYR:CZ	1:C:102:GLY:HA3	2.51	0.45
1:A:265:GLY:HA3	5:A:1298:C8E:H61	1.98	0.45
1:C:131:LEU:HD21	1:C:380:SER:HB2	1.99	0.44
1:C:84:ASN:HD21	1:C:231:ASN:H	1.63	0.44
1:A:12:ILE:HG12	1:A:20:VAL:HG22	1.99	0.44
1:C:12:ILE:HG22	1:C:20:VAL:HG22	2.00	0.44
1:B:84:ASN:HD21	1:B:231:ASN:H	1.65	0.43
1:A:287:ARG:O	1:A:287:ARG:HG2	2.18	0.43
1:B:311:LEU:HD22	1:B:321:THR:HG22	1.99	0.43
1:A:201:LEU:HD23	5:A:1298:C8E:H51	2.01	0.43
1:A:275:GLN:HE21	1:A:310:ARG:HH12	1.66	0.43
1:C:200:HIS:CD2	1:C:312:TYR:OH	2.70	0.42
1:B:298:TYR:HA	1:B:338:TYR:O	2.18	0.42
1:A:311:LEU:HD11	1:A:323:LYS:HE3	2.01	0.42
1:C:200:HIS:HB3	1:C:266:ALA:HB3	2.01	0.42
1:B:174:ASP:HA	1:B:213:SER:HA	2.02	0.42
1:A:131:LEU:HD21	1:A:380:SER:CB	2.51	0.41
1:C:168:PHE:HB3	1:C:182:ARG:HB3	2.02	0.41
5:A:1297:C8E:H82	1:C:39:TYR:HB2	2.02	0.41
1:B:131:LEU:H	1:B:382:ASN:ND2	2.16	0.41
1:A:87:ASN:ND2	7:A:1486:HOH:O	2.53	0.41

There are no symmetry-related clashes.

5.3 Torsion angles

5.3.1 Protein backbone ⓘ

In the following table, the Percentiles column shows the percent Ramachandran outliers of the chain as a percentile score with respect to all X-ray entries followed by that with respect to entries of similar resolution. The Analysed column shows the number of residues for which the backbone conformation was analysed, and the total number of residues.

Mol	Chain	Analysed	Favoured	Allowed	Outliers	Percentiles	
1	A	409/411 (100%)	393 (96%)	15 (4%)	1 (0%)	56	45
1	B	409/411 (100%)	395 (97%)	14 (3%)	0	100	100
1	C	410/411 (100%)	393 (96%)	15 (4%)	2 (0%)	38	22
All	All	1228/1233 (100%)	1181 (96%)	44 (4%)	3 (0%)	56	45

All (3) Ramachandran outliers are listed below:

Mol	Chain	Res	Type
1	C	287	ARG
1	A	287	ARG
1	C	101	THR

5.3.2 Protein sidechains ⓘ

In the following table, the Percentiles column shows the percent sidechain outliers of the chain as a percentile score with respect to all X-ray entries followed by that with respect to entries of similar resolution. The Analysed column shows the number of residues for which the sidechain conformation was analysed, and the total number of residues.

Mol	Chain	Analysed	Rotameric	Outliers	Percentiles	
1	A	325/325 (100%)	317 (98%)	8 (2%)	60	48
1	B	325/325 (100%)	321 (99%)	4 (1%)	82	78
1	C	326/325 (100%)	323 (99%)	3 (1%)	87	86
All	All	976/975 (100%)	961 (98%)	15 (2%)	76	70

All (15) residues with a non-rotameric sidechain are listed below:

Mol	Chain	Res	Type
1	A	26	GLU
1	A	119	LEU
1	A	201	LEU

Continued on next page...

Continued from previous page...

Mol	Chain	Res	Type
1	A	204	GLN
1	A	263	LEU
1	A	280	ARG
1	A	287	ARG
1	A	409	TYR
1	B	13	LYS
1	B	204	GLN
1	B	287	ARG
1	B	329	ILE
1	C	135	LEU
1	C	204	GLN
1	C	259	SER

Some sidechains can be flipped to improve hydrogen bonding and reduce clashes. All (18) such sidechains are listed below:

Mol	Chain	Res	Type
1	A	84	ASN
1	A	134	ASN
1	A	200	HIS
1	A	275	GLN
1	B	84	ASN
1	B	107	ASN
1	B	134	ASN
1	B	172	ASN
1	B	173	ASN
1	B	200	HIS
1	B	347	ASN
1	B	382	ASN
1	C	48	ASN
1	C	84	ASN
1	C	134	ASN
1	C	172	ASN
1	C	200	HIS
1	C	382	ASN

5.3.3 RNA ⓘ

There are no RNA chains in this entry.

5.4 Non-standard residues in protein, DNA, RNA chains ⓘ

There are no non-standard protein/DNA/RNA residues in this entry.

5.5 Carbohydrates ⓘ

There are no carbohydrates in this entry.

5.6 Ligand geometry ⓘ

Of 13 ligands modelled in this entry, 4 are monoatomic - leaving 9 for Mogul analysis.

In the following table, the Counts columns list the number of bonds (or angles) for which Mogul statistics could be retrieved, the number of bonds (or angles) that are observed in the model and the number of bonds (or angles) that are defined in the chemical component dictionary. The Link column lists molecule types, if any, to which the group is linked. The Z score for a bond length (or angle) is the number of standard deviations the observed value is removed from the expected value. A bond length (or angle) with $|Z| > 2$ is considered an outlier worth inspection. RMSZ is the root-mean-square of all Z scores of the bond lengths (or angles).

Mol	Type	Chain	Res	Link	Bond lengths			Bond angles		
					Counts	RMSZ	$\# Z > 2$	Counts	RMSZ	$\# Z > 2$
5	C8E	A	1295	-	20,20,20	0.39	0	19,19,19	0.34	0
5	C8E	A	1297	-	20,20,20	0.39	0	19,19,19	0.36	0
5	C8E	A	1298	-	20,20,20	0.38	0	19,19,19	0.35	0
6	GOL	A	802	-	5,5,5	0.37	0	5,5,5	0.28	0
3	PO4	A	805	-	4,4,4	0.27	0	6,6,6	0.33	0
3	PO4	B	804	-	4,4,4	0.24	0	6,6,6	0.32	0
5	C8E	C	1296	-	20,20,20	0.42	0	19,19,19	0.29	0
6	GOL	C	801	-	5,5,5	0.37	0	5,5,5	0.19	0
3	PO4	C	803	-	4,4,4	0.24	0	6,6,6	0.32	0

In the following table, the Chirals column lists the number of chiral outliers, the number of chiral centers analysed, the number of these observed in the model and the number defined in the chemical component dictionary. Similar counts are reported in the Torsion and Rings columns. '-' means no outliers of that kind were identified.

Mol	Type	Chain	Res	Link	Chirals	Torsions	Rings
5	C8E	A	1295	-	-	0/18/18/18	0/0/0/0
5	C8E	A	1297	-	-	0/18/18/18	0/0/0/0
5	C8E	A	1298	-	-	0/18/18/18	0/0/0/0
6	GOL	A	802	-	-	0/4/4/4	0/0/0/0
3	PO4	A	805	-	-	0/0/0/0	0/0/0/0
3	PO4	B	804	-	-	0/0/0/0	0/0/0/0

Continued on next page...

Continued from previous page...

Mol	Type	Chain	Res	Link	Chirals	Torsions	Rings
5	C8E	C	1296	-	-	0/18/18/18	0/0/0/0
6	GOL	C	801	-	-	0/4/4/4	0/0/0/0
3	PO4	C	803	-	-	0/0/0/0	0/0/0/0

There are no bond length outliers.

There are no bond angle outliers.

There are no chirality outliers.

There are no torsion outliers.

There are no ring outliers.

5.7 Other polymers ⓘ

There are no such residues in this entry.

5.8 Polymer linkage issues

There are no chain breaks in this entry.

6 Fit of model and data ⓘ

6.1 Protein, DNA and RNA chains ⓘ

In the following table, the column labelled ‘#RSRZ> 2’ contains the number (and percentage) of RSRZ outliers, followed by percent RSRZ outliers for the chain as percentile scores relative to all X-ray entries and entries of similar resolution. The OWAB column contains the minimum, median, 95th percentile and maximum values of the occupancy-weighted average B-factor per residue. The column labelled ‘Q< 0.9’ lists the number of (and percentage) of residues with an average occupancy less than 0.9.

Mol	Chain	Analysed	<RSRZ>	#RSRZ>2	OWAB(Å ²)	Q<0.9
1	A	411/411 (100%)	-0.12	7 (1%) 67 74	9, 19, 26, 33	0
1	B	411/411 (100%)	-0.19	3 (0%) 84 90	8, 17, 27, 33	0
1	C	411/411 (100%)	-0.15	5 (1%) 75 82	9, 17, 24, 31	1 (0%)
All	All	1233/1233 (100%)	-0.15	15 (1%) 74 82	8, 18, 26, 33	1 (0%)

All (15) RSRZ outliers are listed below:

Mol	Chain	Res	Type	RSRZ
1	C	287	ARG	5.2
1	A	287	ARG	4.7
1	A	288	ASP	3.9
1	B	288	ASP	3.8
1	C	288	ASP	3.0
1	B	287	ARG	2.7
1	C	383	TYR	2.6
1	A	383	TYR	2.5
1	A	160	MET	2.5
1	C	328	GLU	2.5
1	A	252	GLU	2.4
1	C	327	LYS	2.1
1	A	261	TRP	2.1
1	B	383	TYR	2.1
1	A	328	GLU	2.0

6.2 Non-standard residues in protein, DNA, RNA chains ⓘ

There are no non-standard protein/DNA/RNA residues in this entry.

6.3 Carbohydrates ⓘ

There are no carbohydrates in this entry.

6.4 Ligands ⓘ

In the following table, the Atoms column lists the number of modelled atoms in the group and the number defined in the chemical component dictionary. LLDF column lists the quality of electron density of the group with respect to its neighbouring residues in protein, DNA or RNA chains. The B-factors column lists the minimum, median, 95th percentile and maximum values of B factors of atoms in the group. The column labelled 'Q < 0.9' lists the number of atoms with occupancy less than 0.9.

Mol	Type	Chain	Res	Atoms	RSR	LLDF	B-factors(Å ²)	Q < 0.9
4	CL	A	901	1/1	0.28	11.14	63,63,63,63	0
5	C8E	A	1297	21/21	0.26	8.18	52,54,63,64	0
6	GOL	C	801	6/6	0.16	8.08	35,37,38,38	0
5	C8E	A	1295	21/21	0.24	7.72	52,54,64,65	0
5	C8E	C	1296	21/21	0.26	7.32	43,52,56,57	0
6	GOL	A	802	6/6	0.19	7.21	33,35,36,37	6
2	CA	C	702	1/1	0.10	4.08	17,17,17,17	0
3	PO4	B	804	5/5	0.15	3.96	23,25,26,26	5
2	CA	A	701	1/1	0.10	3.37	17,17,17,17	0
5	C8E	A	1298	21/21	0.19	2.04	44,51,63,64	0
2	CA	B	703	1/1	0.10	1.27	20,20,20,20	0
3	PO4	A	805	5/5	0.10	0.51	21,23,25,25	5
3	PO4	C	803	5/5	0.11	-0.11	20,20,22,24	5

6.5 Other polymers ⓘ

There are no such residues in this entry.