



# wwPDB X-ray Structure Validation Summary Report

Mar 12, 2014 – 06:55 PM GMT

PDB ID : 4O4I  
Title : Tubulin-Laulimalide-EpothiloneA complex  
Authors : Prota, A.E.; Bargsten, K.; Northcote, P.T.; Marsh, M.; Altmann, K.H.; Miller, J.H.; Diaz, J.F.; Steinmetz, M.O.  
Deposited on : 2013-12-18  
Resolution : 2.40 Å(reported)

This is a wwPDB validation summary report for a publicly released PDB entry.  
We welcome your comments at [validation@mail.wwpdb.org](mailto:validation@mail.wwpdb.org)  
A user guide is available at <http://wwpdb.org/ValidationPDFNotes.html>

---

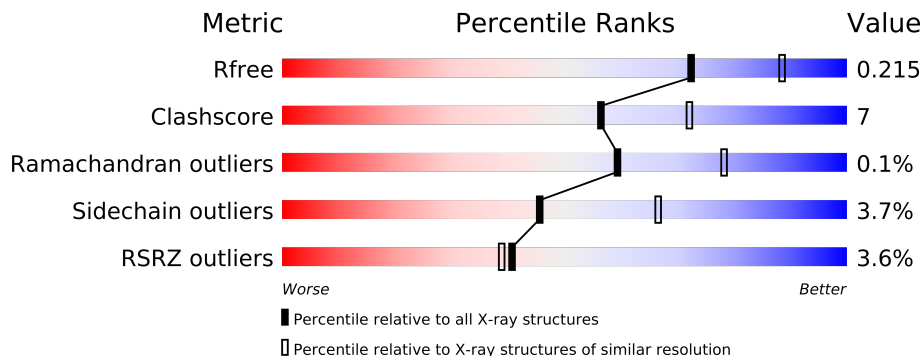
The following versions of software and data (see [references](#)) were used in the production of this report:

MolProbity : 4.02b-467  
Mogul : 1.16 November 2013  
Xtriage (Phenix) : dev-1323  
EDS : trunk22714  
Percentile statistics : 21963  
Refmac : 5.8.0049  
CCP4 : 6.3.0 (Settle)  
Ideal geometry (proteins) : Engh & Huber (2001)  
Ideal geometry (DNA, RNA) : Parkinson et. al. (1996)  
Validation Pipeline (wwPDB-VP) : trunk22714

# 1 Overall quality at a glance

The reported resolution of this entry is 2.40 Å.

Percentile scores (ranging between 0-100) for global validation metrics of the entry are shown in the following graphic. The table shows the number of entries on which the scores are based.



Metric	Whole archive (#Entries)	Similar resolution (#Entries, resolution range(Å))
$R_{free}$	66092	2207 (2.40-2.40)
Clashscore	79885	2789 (2.40-2.40)
Ramachandran outliers	78287	2736 (2.40-2.40)
Sidechain outliers	78261	2737 (2.40-2.40)
RSRZ outliers	66119	2210 (2.40-2.40)

The table below summarises the geometric issues observed across the polymeric chains and their fit to the electron density. The red, orange, yellow and green segments on the lower bar indicate the fraction of residues that contain outliers for  $\geq 3$ , 2, 1 and 0 types of geometric quality criteria. The upper red bar (where present) indicates the fraction of residues that have poor fit to the electron density.

Mol	Chain	Length	Quality of chain
1	A	451	
1	C	451	
2	B	445	
2	D	445	
3	E	143	
4	F	384	

The following table lists non-polymeric compounds that are outliers for geometric or electron-density-fit criteria:

Mol	Type	Chain	Res	Geometry	Electron density
10	LLM	B	505	-	X
6	MG	A	502	-	X

*Continued on next page...*

*Continued from previous page...*

Mol	Type	Chain	Res	Geometry	Electron density
6	MG	B	502	-	X
6	MG	B	504	-	X
6	MG	C	502	-	X
7	CA	A	503	-	X
7	CA	B	506	-	X
7	CA	C	503	-	X

## 2 Entry composition

There are 13 unique types of molecules in this entry. The entry contains 18304 atoms, of which 0 are hydrogen and 0 are deuterium.

In the tables below, the ZeroOcc column contains the number of atoms modelled with zero occupancy, the AltConf column contains the number of residues with at least one atom in alternate conformation and the Trace column contains the number of residues modelled with at most 2 atoms.

- Molecule 1 is a protein called Tubulin alpha-1B chain.

Mol	Chain	Residues	Atoms					ZeroOcc	AltConf	Trace
1	A	437	Total	C	N	O	S	0	0	0
			3416	2163	581	650	22			
1	C	440	Total	C	N	O	S	0	1	0
			3440	2177	584	656	23			

- Molecule 2 is a protein called Tubulin beta-2B chain.

Mol	Chain	Residues	Atoms					ZeroOcc	AltConf	Trace
2	B	428	Total	C	N	O	S	0	1	0
			3372	2117	577	651	27			
2	D	431	Total	C	N	O	S	0	1	0
			3381	2120	579	654	28			

- Molecule 3 is a protein called Stathmin-4.

Mol	Chain	Residues	Atoms					ZeroOcc	AltConf	Trace
3	E	121	Total	C	N	O	S	0	2	0
			1013	625	184	199	5			

There are 2 discrepancies between the modelled and reference sequences:

Chain	Residue	Modelled	Actual	Comment	Reference
E	3	MET	ILE	CLONING ARTIFACT	UNP P63043
E	4	ALA	SER	CLONING ARTIFACT	UNP P63043

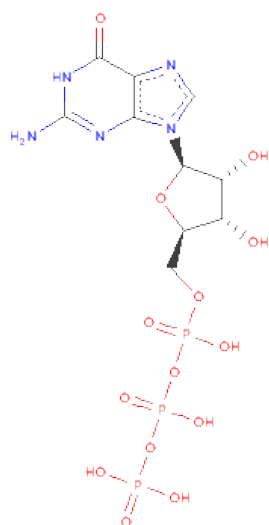
- Molecule 4 is a protein called Tubulin-tyrosine ligase.

Mol	Chain	Residues	Atoms					ZeroOcc	AltConf	Trace
4	F	351	Total	C	N	O	S	0	8	0
			2898	1867	490	527	14			

There are 6 discrepancies between the modelled and reference sequences:

Chain	Residue	Modelled	Actual	Comment	Reference
F	379	HIS	-	EXPRESSION TAG	UNP E1BQ43
F	380	HIS	-	EXPRESSION TAG	UNP E1BQ43
F	381	HIS	-	EXPRESSION TAG	UNP E1BQ43
F	382	HIS	-	EXPRESSION TAG	UNP E1BQ43
F	383	HIS	-	EXPRESSION TAG	UNP E1BQ43
F	384	HIS	-	EXPRESSION TAG	UNP E1BQ43

- Molecule 5 is GUANOSINE-5'-TRIPHOSPHATE (three-letter code: GTP) (formula:  $C_{10}H_{16}N_5O_{14}P_3$ ).



Mol	Chain	Residues	Atoms					ZeroOcc	AltConf
5	A	1	Total	C	N	O	P	0	0
			32	10	5	14	3		
5	C	1	Total	C	N	O	P	0	0
			32	10	5	14	3		

- Molecule 6 is MAGNESIUM ION (three-letter code: MG) (formula: Mg).

Mol	Chain	Residues	Atoms		ZeroOcc	AltConf
6	B	2	Total	Mg	0	0
			2	2		
6	A	1	Total	Mg	0	0
			1	1		
6	D	1	Total	Mg	0	0
			1	1		
6	C	1	Total	Mg	0	0
			1	1		

*Continued on next page...*

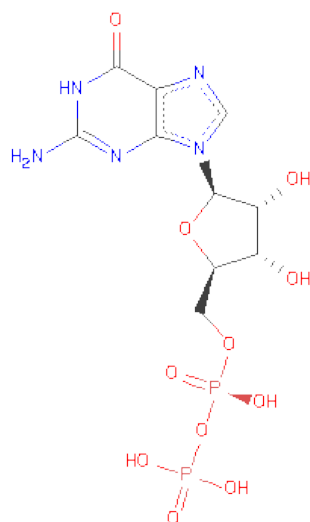
*Continued from previous page...*

Mol	Chain	Residues	Atoms		ZeroOcc	AltConf
6	F	1	Total	Mg	0	0
			1	1		

- Molecule 7 is CALCIUM ION (three-letter code: CA) (formula: Ca).

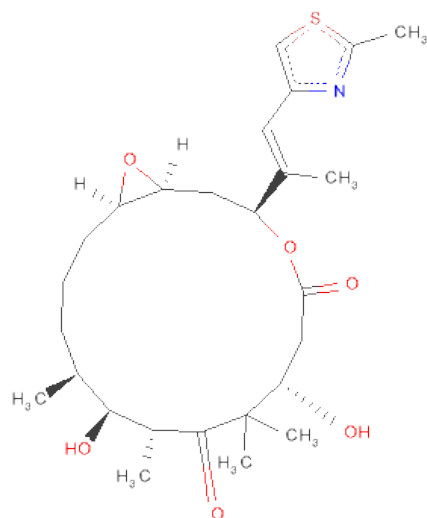
Mol	Chain	Residues	Atoms		ZeroOcc	AltConf
7	B	1	Total	Ca	0	0
			1	1		
7	A	1	Total	Ca	0	0
			1	1		
7	C	1	Total	Ca	0	0
			1	1		

- Molecule 8 is GUANOSINE-5'-DIPHOSPHATE (three-letter code: GDP) (formula: C<sub>10</sub>H<sub>15</sub>N<sub>5</sub>O<sub>11</sub>P<sub>2</sub>).



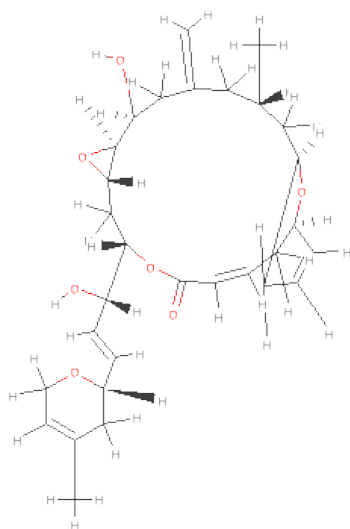
Mol	Chain	Residues	Atoms					ZeroOcc	AltConf
8	B	1	Total	C	N	O	P	0	0
			28	10	5	11	2		
8	D	1	Total	C	N	O	P	0	0
			28	10	5	11	2		

- Molecule 9 is EPOTHILONE A (three-letter code: EP) (formula: C<sub>26</sub>H<sub>39</sub>NO<sub>6</sub>S).



Mol	Chain	Residues	Atoms					ZeroOcc	AltConf
9	B	1	Total	C	N	O	S	0	0
			34	26	1	6	1		
9	D	1	Total	C	N	O	S	0	0
			34	26	1	6	1		

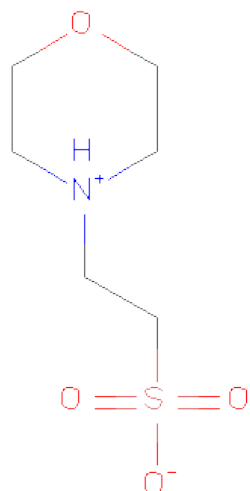
- Molecule 10 is LAULIMALIDE (three-letter code: LLM) (formula:  $C_{30}H_{42}O_7$ ).



Mol	Chain	Residues	Atoms			ZeroOcc	AltConf
10	B	1	Total	C	O	5	0
			37	30	7		

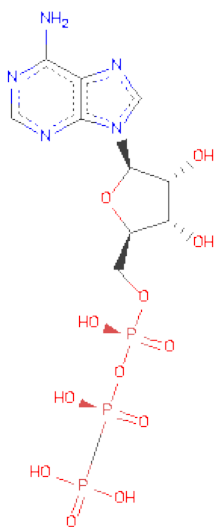
- Molecule 11 is 2-(N-MORPHOLINO)-ETHANESULFONICACID (three-letter code: MES)

(formula:  $C_6H_{13}NO_4S$ ).



Mol	Chain	Residues	Atoms					ZeroOcc	AltConf
			Total	C	N	O	S		
11	B	1	12	6	1	4	1	0	0

- Molecule 12 is PHOSPHOMETHYLPHOSPHONICACID ADENYLATE ESTER (three-letter code: ACP) (formula:  $C_{11}H_{18}N_5O_{12}P_3$ ).



Mol	Chain	Residues	Atoms					ZeroOcc	AltConf
			Total	C	N	O	P		
12	F	1	31	11	5	12	3	0	0



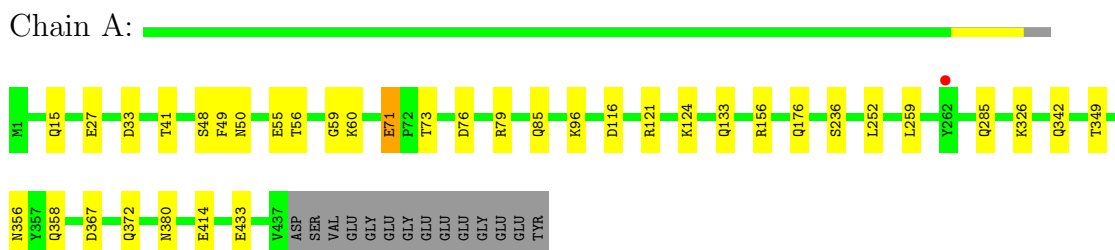
- Molecule 13 is water.

Mol	Chain	Residues	Atoms		ZeroOcc	AltConf
13	A	112	Total 112	O 112	0	0
13	B	90	Total 90	O 90	0	0
13	C	161	Total 161	O 161	0	0
13	D	63	Total 63	O 63	0	0
13	E	34	Total 34	O 34	0	0
13	F	47	Total 47	O 47	0	0

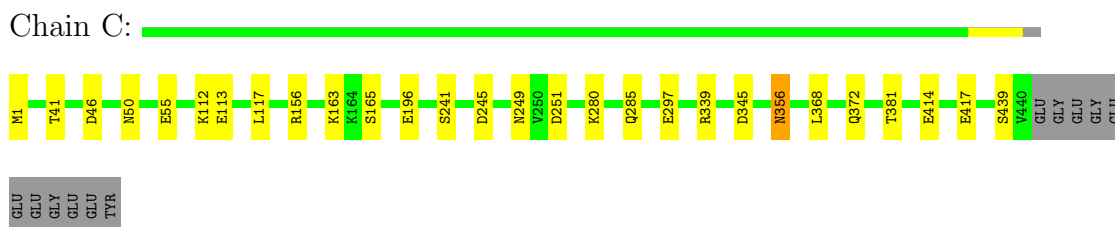
### 3 Residue-property plots

These plots are drawn for all protein, RNA and DNA chains in the entry. The first graphic for a chain summarises the proportions of errors displayed in the second graphic. The second graphic shows the sequence view annotated by issues in geometry and electron density. Residues are color-coded according to the number of geometric quality criteria for which they contain at least one outlier: green = 0, yellow = 1, orange = 2 and red = 3 or more. A red dot above a residue indicates a poor fit to the electron density ( $RSRZ > 2$ ). Stretches of 2 or more consecutive residues without any outlier are shown as a green connector. Residues present in the sample, but not in the model, are shown in grey.

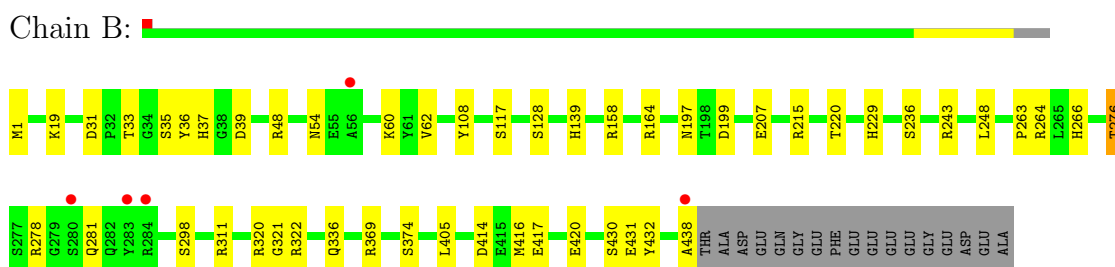
- Molecule 1: Tubulin alpha-1B chain



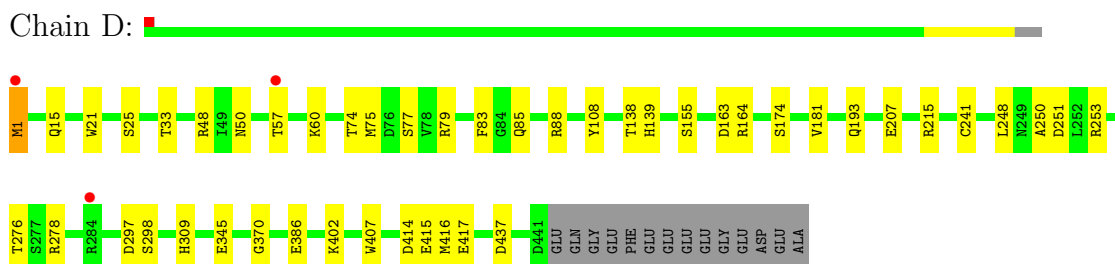
- Molecule 1: Tubulin alpha-1B chain



- Molecule 2: Tubulin beta-2B chain

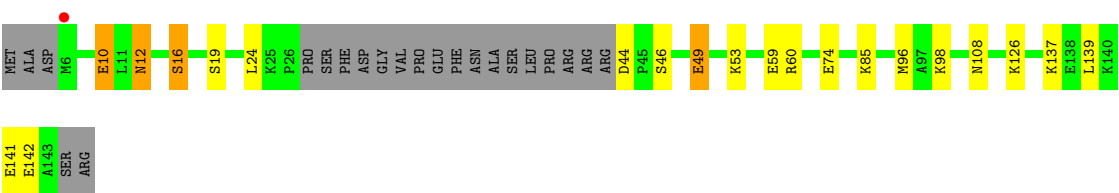


- Molecule 2: Tubulin beta-2B chain



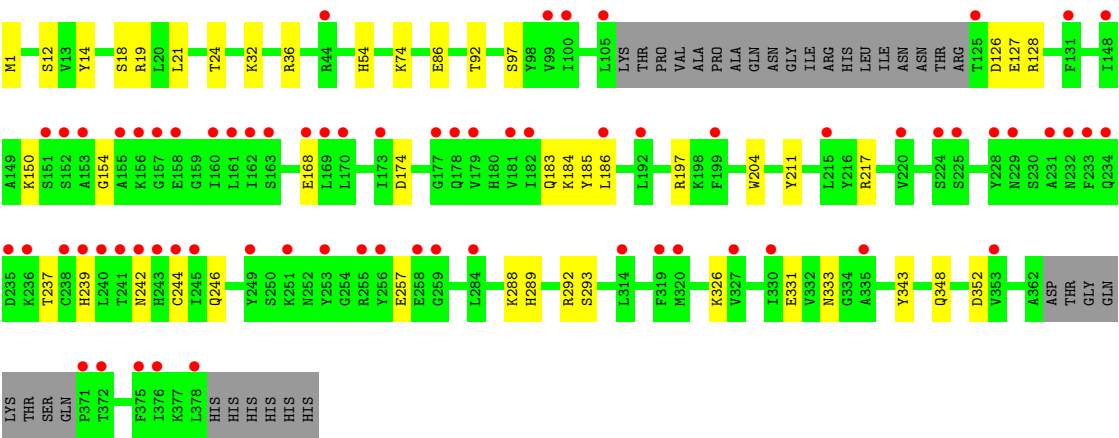
- Molecule 3: Stathmin-4

Chain E: 



• Molecule 4: Tubulin-tyrosine ligase

Chain F: 



## 4 Data and refinement statistics

Property	Value	Source
Space group	P 21 21 21	Depositor
Cell constants a, b, c, $\alpha$ , $\beta$ , $\gamma$	105.20Å 158.03Å 180.40Å 90.00° 90.00° 90.00°	Depositor
Resolution (Å)	52.21 – 2.40 78.78 – 2.40	Depositor EDS
% Data completeness (in resolution range)	99.7 (52.21-2.40) 99.7 (78.78-2.40)	Depositor EDS
$R_{merge}$	0.14	Depositor
$R_{sym}$	(Not available)	Depositor
$\langle I/\sigma(I) \rangle$ <sup>1</sup>	1.52 (at 2.40Å)	Xtriage
Refinement program	PHENIX (phenix.refine: 1.8.2_1309)	Depositor
R, $R_{free}$	0.188 , 0.214 0.189 , 0.215	Depositor DCC
$R_{free}$ test set	5885 reflections (5.01%)	DCC
Wilson B-factor (Å <sup>2</sup> )	46.2	Xtriage
Anisotropy	0.229	Xtriage
Bulk solvent $k_{sol}$ (e/Å <sup>3</sup> ), $B_{sol}$ (Å <sup>2</sup> )	0.33 , 30.7	EDS
Estimated twinning fraction	No twinning to report.	Xtriage
L-test for twinning	$\langle  L  \rangle = 0.48$ , $\langle L^2 \rangle = 0.31$	Xtriage
Outliers	0 of 117491 reflections	Xtriage
$F_o, F_c$ correlation	0.95	EDS
Total number of atoms	18304	wwPDB-VP
Average B, all atoms (Å <sup>2</sup> )	50.0	wwPDB-VP

Xtriage's analysis on translational NCS is as follows: *The largest off-origin peak in the Patterson function is 2.52% of the height of the origin peak. No significant pseudotranslation is detected.*

<sup>1</sup>Intensities estimated from amplitudes.

## 5 Model quality

### 5.1 Standard geometry

Bond lengths and bond angles in the following residue types are not validated in this section: GDP, MG, MES, CA, GTP, ACP, LLM, EP

The Z score for a bond length (or angle) is the number of standard deviations the observed value is removed from the expected value. A bond length (or angle) with  $|Z| > 5$  is considered an outlier worth inspection. RMSZ is the root-mean-square of all Z scores of the bond lengths (or angles).

Mol	Chain	Bond lengths		Bond angles	
		RMSZ	$\# Z  > 5$	RMSZ	$\# Z  > 5$
1	A	0.31	0/3494	0.49	0/4743
1	C	0.36	0/3521	0.56	1/4780 (0.0%)
2	B	0.33	0/3450	0.50	0/4672
2	D	0.33	0/3458	0.54	0/4684
3	E	0.32	0/1027	0.46	0/1362
4	F	0.31	0/2985	0.51	0/4032
All	All	0.33	0/17935	0.52	1/24273 (0.0%)

There are no bond length outliers.

All (1) bond angle outliers are listed below:

Mol	Chain	Res	Type	Atoms	Z	Observed(°)	Ideal(°)
1	C	117	LEU	CA-CB-CG	-5.00	103.80	115.30

There are no chirality outliers.

There are no planarity outliers.

### 5.2 Close contacts

In the following table, the Non-H and H(model) columns list the number of non-hydrogen atoms and hydrogen atoms in the chain respectively. The H(added) column lists the number of hydrogens added by MolProbity. The Clashes column lists the number of clashes within the asymmetric unit, and the number in parentheses is this value normalized per 1000 atoms of the molecule in the chain. The Symm-Clashes column gives symmetry related clashes, in the same way as for the Clashes column.

Mol	Chain	Non-H	H(model)	H(added)	Clashes	Symm-Clashes
1	A	3416	0	0	19	0
1	C	3440	0	0	15	0

*Continued on next page...*

*Continued from previous page...*

Mol	Chain	Non-H	H(model)	H(added)	Clashes	Symm-Clashes
2	B	3372	0	0	26	0
2	D	3381	0	0	25	0
3	E	1013	0	0	10	0
4	F	2898	0	0	24	0
5	A	32	0	12	1	0
5	C	32	0	12	0	0
6	A	1	0	0	0	0
6	B	2	0	0	0	0
6	C	1	0	0	0	0
6	D	1	0	0	0	0
6	F	1	0	0	0	0
7	A	1	0	0	0	0
7	B	1	0	0	0	0
7	C	1	0	0	0	0
8	B	28	0	12	0	0
8	D	28	0	12	0	0
9	B	34	0	39	5	0
9	D	34	0	39	1	0
10	B	37	0	0	1	0
11	B	12	0	12	2	0
12	F	31	0	14	2	0
13	A	112	0	0	5	0
13	B	90	0	0	7	0
13	C	161	0	0	10	0
13	D	63	0	0	9	0
13	E	34	0	0	5	0
13	F	47	0	0	7	0
All	All	18304	0	152	117	0

Clashscore is defined as the number of clashes calculated for the entry per 1000 atoms (including hydrogens) of the entry. The overall clashscore for this entry is 7.

The worst 5 of 117 close contacts within the same asymmetric unit are listed below.

Atom-1	Atom-2	Distance(Å)	Clash(Å)
2:B:276:THR:OG1	9:B:503:EP:N20	2.00	0.94
4:F:184:LYS:NZ	4:F:185:TYR:O	2.01	0.94
4:F:74:LYS:NZ	4:F:331:GLU:OE2	2.02	0.92
1:C:163:LYS:NZ	13:C:749:HOH:O	2.03	0.91
3:E:10:GLU:O	3:E:12:ASN:ND2	2.03	0.91

There are no symmetry-related clashes.

## 5.3 Torsion angles

### 5.3.1 Protein backbone ⓘ

In the following table, the Percentiles column shows the percent Ramachandran outliers of the chain as a percentile score with respect to all X-ray entries followed by that with respect to entries of similar resolution. The Analysed column shows the number of residues for which the backbone conformation was analysed, and the total number of residues.

Mol	Chain	Analysed	Favoured	Allowed	Outliers	Percentiles	
1	A	435/451 (96%)	426 (98%)	9 (2%)	0	100	100
1	C	439/451 (97%)	431 (98%)	8 (2%)	0	100	100
2	B	427/445 (96%)	412 (96%)	14 (3%)	1 (0%)	56	74
2	D	430/445 (97%)	421 (98%)	9 (2%)	0	100	100
3	E	119/143 (83%)	119 (100%)	0	0	100	100
4	F	352/384 (92%)	341 (97%)	10 (3%)	1 (0%)	50	68
All	All	2202/2319 (95%)	2150 (98%)	50 (2%)	2 (0%)	59	78

All (2) Ramachandran outliers are listed below:

Mol	Chain	Res	Type
2	B	321	GLY
4	F	154	GLY

### 5.3.2 Protein sidechains ⓘ

In the following table, the Percentiles column shows the percent sidechain outliers of the chain as a percentile score with respect to all X-ray entries followed by that with respect to entries of similar resolution. The Analysed column shows the number of residues for which the sidechain conformation was analysed, and the total number of residues.

Mol	Chain	Analysed	Rotameric	Outliers	Percentiles	
1	A	368/379 (97%)	358 (97%)	10 (3%)	57	78
1	C	372/379 (98%)	363 (98%)	9 (2%)	61	81
2	B	371/383 (97%)	353 (95%)	18 (5%)	35	53
2	D	371/383 (97%)	358 (96%)	13 (4%)	48	69
3	E	110/127 (87%)	97 (88%)	13 (12%)	8	10
4	F	321/342 (94%)	313 (98%)	8 (2%)	60	80
All	All	1913/1993 (96%)	1842 (96%)	71 (4%)	45	66

5 of 71 residues with a non-rotameric sidechain are listed below:

Mol	Chain	Res	Type
1	C	245	ASP
2	D	50	ASN
4	F	186	LEU
1	C	251	ASP
1	C	381	THR

Some sidechains can be flipped to improve hydrogen bonding and reduce clashes. There are no such sidechains identified.

### 5.3.3 RNA ⓘ

There are no RNA chains in this entry.

## 5.4 Non-standard residues in protein, DNA, RNA chains ⓘ

There are no non-standard protein/DNA/RNA residues in this entry.

## 5.5 Carbohydrates ⓘ

There are no carbohydrates in this entry.

## 5.6 Ligand geometry ⓘ

Of 18 ligands modelled in this entry, 9 are monoatomic - leaving 9 for Mogul analysis.

In the following table, the Counts columns list the number of bonds (or angles) for which Mogul statistics could be retrieved, the number of bonds (or angles) that are observed in the model and the number of bonds (or angles) that are defined in the chemical component dictionary. The Link column lists molecule types, if any, to which the group is linked. The Z score for a bond length (or angle) is the number of standard deviations the observed value is removed from the expected value. A bond length (or angle) with  $|Z| > 2$  is considered an outlier worth inspection. RMSZ is the root-mean-square of all Z scores of the bond lengths (or angles).

Mol	Type	Chain	Res	Link	Bond lengths			Bond angles		
					Counts	RMSZ	$\# Z  > 2$	Counts	RMSZ	$\# Z  > 2$
5	GTP	A	501	6	34,34,34	0.99	1 (2%)	52,54,54	1.40	6 (11%)
8	GDP	B	501	6	30,30,30	1.30	5 (16%)	45,47,47	3.58	9 (20%)
9	EP	B	503	-	36,36,36	1.24	3 (8%)	50,53,53	3.23	15 (30%)
10	LLM	B	505	-	40,40,40	3.38	15 (37%)	55,55,55	1.98	12 (21%)



Mol	Type	Chain	Res	Link	Bond lengths			Bond angles		
					Counts	RMSZ	# Z  > 2	Counts	RMSZ	# Z  > 2
11	MES	B	507	-	12,12,12	2.10	1 (8%)	16,16,16	2.04	3 (18%)
5	GTP	C	501	6	34,34,34	1.01	1 (2%)	52,54,54	1.37	6 (11%)
8	GDP	D	501	6	30,30,30	1.30	4 (13%)	45,47,47	3.24	10 (22%)
9	EP	D	503	-	36,36,36	1.41	4 (11%)	50,53,53	4.11	15 (30%)
12	ACP	F	500	6	33,33,33	1.63	8 (24%)	52,52,52	1.90	10 (19%)

In the following table, the Chirals column lists the number of chiral outliers, the number of chiral centers analysed, the number of these observed in the model and the number defined in the chemical component dictionary. Similar counts are reported in the Torsion and Rings columns. '-' means no outliers of that kind were identified.

Mol	Type	Chain	Res	Link	Chirals	Torsions	Rings
5	GTP	A	501	6	-	0/22/38/38	0/3/3/3
8	GDP	B	501	6	-	0/16/32/32	0/3/3/3
9	EP	B	503	-	-	1/49/55/55	0/2/3/3
10	LLM	B	505	-	-	0/39/64/64	0/1/4/4
11	MES	B	507	-	-	0/6/14/14	0/1/1/1
5	GTP	C	501	6	-	0/22/38/38	0/3/3/3
8	GDP	D	501	6	-	0/16/32/32	0/3/3/3
9	EP	D	503	-	-	1/49/55/55	0/2/3/3
12	ACP	F	500	6	-	0/20/38/38	0/3/3/3

The worst 5 of 42 bond length outliers are listed below:

Mol	Chain	Res	Type	Atoms	Z	Observed(Å)	Ideal(Å)
10	B	505	LLM	C14-C13	-12.06	1.38	1.51
10	B	505	LLM	C12-C13	-10.96	1.39	1.51
11	B	507	MES	C8-S	-6.54	1.67	1.78
10	B	505	LLM	C21-C22	6.18	1.52	1.32
9	D	503	EP	C27-C24	5.19	1.54	1.46

The worst 5 of 86 bond angle outliers are listed below:

Mol	Chain	Res	Type	Atoms	Z	Observed(°)	Ideal(°)
9	D	503	EP	C12-C13-S1	-25.00	105.52	109.63
8	B	501	GDP	C6-C5-N7	20.92	136.96	134.14
8	D	501	GDP	C6-C5-N7	17.86	136.54	134.14
9	B	503	EP	C12-C13-S1	-15.69	107.05	109.63
9	B	503	EP	C32-C27-C24	-7.44	113.93	123.55

There are no chirality outliers.

All (2) torsion outliers are listed below:

Mol	Chain	Res	Type	Atoms
9	D	503	EP	C5-C10-C12-N20
9	B	503	EP	C5-C10-C12-N20

There are no ring outliers.

## 5.7 Other polymers ⓘ

There are no such residues in this entry.

## 5.8 Polymer linkage issues

There are no chain breaks in this entry.

## 6 Fit of model and data ⓘ

### 6.1 Protein, DNA and RNA chains ⓘ

In the following table, the column labelled ‘#RSRZ> 2’ contains the number (and percentage) of RSRZ outliers, followed by percent RSRZ outliers for the chain as percentile scores relative to all X-ray entries and entries of similar resolution. The OWAB column contains the minimum, median, 95<sup>th</sup> percentile and maximum values of the occupancy-weighted average B-factor per residue. The column labelled ‘Q< 0.9’ lists the number of (and percentage) of residues with an average occupancy less than 0.9.

Mol	Chain	Analysed	<RSRZ>	#RSRZ>2	OWAB(Å <sup>2</sup> )	Q<0.9
1	A	437/451 (96%)	-0.10	1 (0%) 93 94	24, 40, 68, 119	0
1	C	440/451 (97%)	-0.15	0 100 100	19, 32, 59, 84	0
2	B	428/445 (96%)	0.02	5 (1%) 75 75	23, 43, 81, 115	2 (0%)
2	D	431/445 (96%)	-0.10	3 (0%) 84 84	25, 47, 79, 107	6 (1%)
3	E	121/143 (84%)	0.05	1 (0%) 83 82	30, 53, 100, 118	0
4	F	351/384 (91%)	0.97	70 (19%) 2 1	36, 65, 136, 154	0
All	All	2208/2319 (95%)	0.09	80 (3%) 41 39	19, 44, 99, 154	8 (0%)

The worst 5 of 80 RSRZ outliers are listed below:

Mol	Chain	Res	Type	RSRZ
4	F	240	LEU	8.2
4	F	234	GLN	7.4
4	F	233	PHE	7.3
4	F	173	ILE	6.6
4	F	236	LYS	6.3

### 6.2 Non-standard residues in protein, DNA, RNA chains ⓘ

There are no non-standard protein/DNA/RNA residues in this entry.

### 6.3 Carbohydrates ⓘ

There are no carbohydrates in this entry.

## 6.4 Ligands ⓘ

In the following table, the Atoms column lists the number of modelled atoms in the group and the number defined in the chemical component dictionary. LLDF column lists the quality of electron density of the group with respect to its neighbouring residues in protein, DNA or RNA chains. The B-factors column lists the minimum, median, 95<sup>th</sup> percentile and maximum values of B factors of atoms in the group. The column labelled 'Q< 0.9' lists the number of atoms with occupancy less than 0.9.

Mol	Type	Chain	Res	Atoms	RSR	LLDF	B-factors(Å <sup>2</sup> )	Q<0.9
6	MG	A	502	1/1	0.34	16.36	30,30,30,30	0
6	MG	B	504	1/1	0.28	11.82	28,28,28,28	0
6	MG	C	502	1/1	0.33	9.83	29,29,29,29	0
7	CA	B	506	1/1	0.20	6.51	80,80,80,80	0
10	LLM	B	505	37/37	0.29	5.08	72,99,120,123	5
7	CA	A	503	1/1	0.21	4.73	64,64,64,64	0
6	MG	B	502	1/1	0.22	2.97	54,54,54,54	0
7	CA	C	503	1/1	0.19	2.47	68,68,68,68	0
9	EP	B	503	34/34	0.25	0.80	54,67,75,82	0
9	EP	D	503	34/34	0.19	0.64	35,46,60,63	0
5	GTP	C	501	32/32	0.15	0.55	16,22,27,42	0
8	GDP	B	501	28/28	0.17	0.55	18,27,32,35	0
5	GTP	A	501	32/32	0.16	0.45	19,26,34,42	0
8	GDP	D	501	28/28	0.13	-0.02	29,34,46,51	0
6	MG	D	502	1/1	0.15	-0.07	62,62,62,62	0
11	MES	B	507	12/12	0.13	-0.19	48,55,71,74	0
12	ACP	F	500	31/31	0.22	-0.79	69,83,158,200	0
6	MG	F	501	1/1	0.15	-2.14	77,77,77,77	0

## 6.5 Other polymers ⓘ

There are no such residues in this entry.