



wwPDB X-ray Structure Validation Summary Report

Oct 29, 2014 – 11:22 PM EDT

PDB ID : 4O4R
Title : Murine Norovirus RdRp in complex with PPNDs
Authors : Croci, R.; Tarantino, D.; Milani, M.; Pezzullo, M.; Bolognesi, M.; Mastrangelo, E.
Deposited on : 2013-12-19
Resolution : 2.40 Å(reported)

This is a wwPDB validation summary report for a publicly released PDB entry.
We welcome your comments at validation@mail.wwpdb.org
A user guide is available at <http://wwpdb.org/ValidationPDFNotes.html>

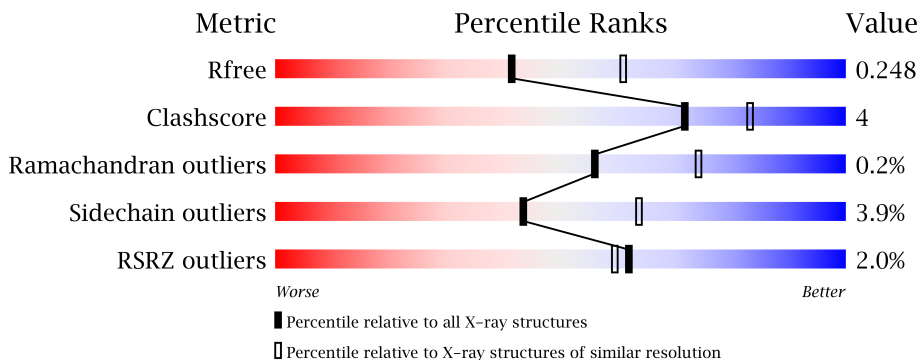
The following versions of software and data (see [references](#)) were used in the production of this report:

MolProbity : 4.02b-467
Mogul : 1.16 November 2013
Xtriage (Phenix) : dev-1439
EDS : stable24103
Percentile statistics : 21963
Refmac : 5.8.0049
CCP4 : 6.1.3
Ideal geometry (proteins) : Engh & Huber (2001)
Ideal geometry (DNA, RNA) : Parkinson et. al. (1996)
Validation Pipeline (wwPDB-VP) : stable24103

1 Overall quality at a glance

The reported resolution of this entry is 2.40 Å.

Percentile scores (ranging between 0-100) for global validation metrics of the entry are shown in the following graphic. The table shows the number of entries on which the scores are based.



Metric	Whole archive (#Entries)	Similar resolution (#Entries, resolution range(Å))
R_{free}	66092	2207 (2.40-2.40)
Clashscore	79885	2789 (2.40-2.40)
Ramachandran outliers	78287	2736 (2.40-2.40)
Sidechain outliers	78261	2737 (2.40-2.40)
RSRZ outliers	66119	2210 (2.40-2.40)

The table below summarises the geometric issues observed across the polymeric chains and their fit to the electron density. The red, orange, yellow and green segments on the lower bar indicate the fraction of residues that contain outliers for ≥ 3 , 2, 1 and 0 types of geometric quality criteria. The upper red bar (where present) indicates the fraction of residues that have poor fit to the electron density.

Mol	Chain	Length	Quality of chain
1	A	515	
1	B	515	
1	C	515	

The following table lists non-polymeric compounds that are outliers for geometric or electron-density-fit criteria:

Mol	Type	Chain	Res	Geometry	Electron density
3	SO4	A	604	-	X
3	SO4	A	606	-	X

2 Entry composition

There are 4 unique types of molecules in this entry. The entry contains 12407 atoms, of which 0 are hydrogen and 0 are deuterium.

In the tables below, the ZeroOcc column contains the number of atoms modelled with zero occupancy, the AltConf column contains the number of residues with at least one atom in alternate conformation and the Trace column contains the number of residues modelled with at most 2 atoms.

- Molecule 1 is a protein called RNA-dependent-RNA-polymerase.

Mol	Chain	Residues	Atoms					ZeroOcc	AltConf	Trace
1	A	476	Total	C	N	O	S	0	0	0
			3784	2394	668	698	24			
1	B	480	Total	C	N	O	S	0	2	0
			3822	2419	673	706	24			
1	C	474	Total	C	N	O	S	0	1	0
			3765	2383	663	695	24			

There are 24 discrepancies between the modelled and reference sequences:

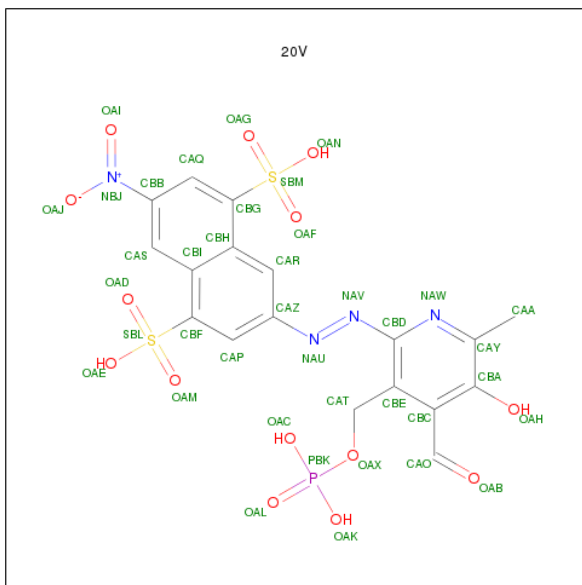
Chain	Residue	Modelled	Actual	Comment	Reference
A	508	LEU	-	EXPRESSION TAG	UNP S4V9Y7
A	509	GLU	-	EXPRESSION TAG	UNP S4V9Y7
A	510	HIS	-	EXPRESSION TAG	UNP S4V9Y7
A	511	HIS	-	EXPRESSION TAG	UNP S4V9Y7
A	512	HIS	-	EXPRESSION TAG	UNP S4V9Y7
A	513	HIS	-	EXPRESSION TAG	UNP S4V9Y7
A	514	HIS	-	EXPRESSION TAG	UNP S4V9Y7
A	515	HIS	-	EXPRESSION TAG	UNP S4V9Y7
B	508	LEU	-	EXPRESSION TAG	UNP S4V9Y7
B	509	GLU	-	EXPRESSION TAG	UNP S4V9Y7
B	510	HIS	-	EXPRESSION TAG	UNP S4V9Y7
B	511	HIS	-	EXPRESSION TAG	UNP S4V9Y7
B	512	HIS	-	EXPRESSION TAG	UNP S4V9Y7
B	513	HIS	-	EXPRESSION TAG	UNP S4V9Y7
B	514	HIS	-	EXPRESSION TAG	UNP S4V9Y7
B	515	HIS	-	EXPRESSION TAG	UNP S4V9Y7
C	508	LEU	-	EXPRESSION TAG	UNP S4V9Y7
C	509	GLU	-	EXPRESSION TAG	UNP S4V9Y7
C	510	HIS	-	EXPRESSION TAG	UNP S4V9Y7
C	511	HIS	-	EXPRESSION TAG	UNP S4V9Y7
C	512	HIS	-	EXPRESSION TAG	UNP S4V9Y7
C	513	HIS	-	EXPRESSION TAG	UNP S4V9Y7
C	514	HIS	-	EXPRESSION TAG	UNP S4V9Y7

Continued on next page...

Continued from previous page...

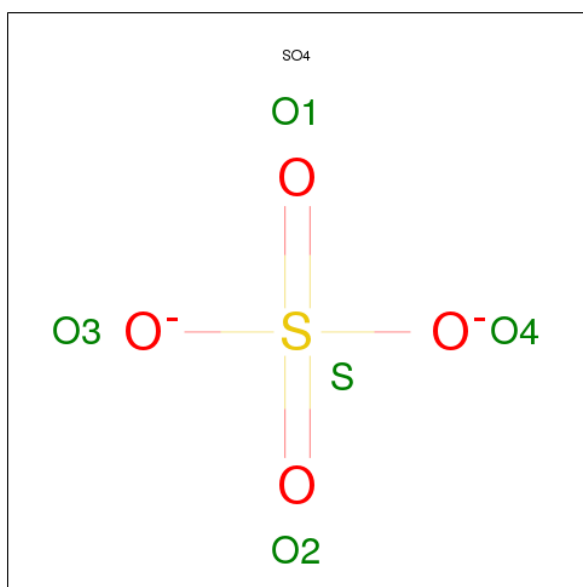
Chain	Residue	Modelled	Actual	Comment	Reference
C	515	HIS	-	EXPRESSION TAG	UNP S4V9Y7

- Molecule 2 is 3-[(E)-{4-FORMYL-5-HYDROXY-6-METHYL-3-[(PHOSPHONOOXY)METHYL]PYRIDIN-2-YL}DIAZENYL]-7-NITRONAPHTHALENE-1,5-DISULFONICACID (three-letter code: 20V) (formula: $C_{18}H_{15}N_4O_{14}PS_2$).



Mol	Chain	Residues	Atoms					ZeroOcc	AltConf	
2	A	1	Total 39	C 18	N 4	O 14	P 1	S 2	0	0
2	A	1	Total 39	C 18	N 4	O 14	P 1	S 2	0	0
2	B	1	Total 39	C 18	N 4	O 14	P 1	S 2	0	0
2	B	1	Total 39	C 18	N 4	O 14	P 1	S 2	0	0
2	C	1	Total 39	C 18	N 4	O 14	P 1	S 2	0	0
2	C	1	Total 39	C 18	N 4	O 14	P 1	S 2	0	0

- Molecule 3 is SULFATE ION (three-letter code: SO4) (formula: O_4S).



Mol	Chain	Residues	Atoms			ZeroOcc	AltConf
3	A	1	Total	O	S	0	0
			5	4	1		
3	A	1	Total	O	S	0	0
			5	4	1		
3	A	1	Total	O	S	0	0
			5	4	1		
3	A	1	Total	O	S	0	0
			5	4	1		
3	A	1	Total	O	S	0	0
			5	4	1		
3	B	1	Total	O	S	0	0
			5	4	1		
3	B	1	Total	O	S	0	0
			5	4	1		
3	B	1	Total	O	S	0	0
			5	4	1		

- Molecule 4 is water.

Mol	Chain	Residues	Atoms		ZeroOcc	AltConf
4	A	272	Total	O	0	6
			275	275		
4	B	259	Total	O	0	1
			260	260		

Continued on next page...

Continued from previous page...

Mol	Chain	Residues	Atoms		ZeroOcc	AltConf
4	C	217	Total 217	O 217	0	1

His
Str

4 Data and refinement statistics

Property	Value	Source
Space group	C 1 2 1	Depositor
Cell constants a, b, c, α , β , γ	119.71 Å 197.43 Å 109.57 Å 90.00° 114.06° 90.00°	Depositor
Resolution (Å)	59.36 – 2.40 59.36 – 2.40	Depositor EDS
% Data completeness (in resolution range)	100.0 (59.36-2.40) 100.0 (59.36-2.40)	Depositor EDS
R_{merge}	(Not available)	Depositor
R_{sym}	(Not available)	Depositor
$\langle I/\sigma(I) \rangle$ ¹	2.01 (at 2.40 Å)	Xtriage
Refinement program	REFMAC 5.7.0029	Depositor
R, R_{free}	0.192 , 0.249 0.195 , 0.248	Depositor DCC
R_{free} test set	4532 reflections (5.28%)	DCC
Wilson B-factor (Å ²)	39.2	Xtriage
Anisotropy	0.265	Xtriage
Bulk solvent k_{sol} (e/Å ³), B_{sol} (Å ²)	0.36 , 38.1	EDS
Estimated twinning fraction	No twinning to report.	Xtriage
L-test for twinning	$\langle L \rangle = 0.49$, $\langle L^2 \rangle = 0.32$	Xtriage
Outliers	0 of 90344 reflections	Xtriage
F_o, F_c correlation	0.94	EDS
Total number of atoms	12407	wwPDB-VP
Average B, all atoms (Å ²)	45.0	wwPDB-VP

Xtriage's analysis on translational NCS is as follows: *The largest off-origin peak in the Patterson function is 3.81% of the height of the origin peak. No significant pseudotranslation is detected.*

¹Intensities estimated from amplitudes.

5 Model quality i

5.1 Standard geometry i

Bond lengths and bond angles in the following residue types are not validated in this section: SO4, 2OV

The Z score for a bond length (or angle) is the number of standard deviations the observed value is removed from the expected value. A bond length (or angle) with $|Z| > 5$ is considered an outlier worth inspection. RMSZ is the root-mean-square of all Z scores of the bond lengths (or angles).

Mol	Chain	Bond lengths		Bond angles	
		RMSZ	# Z >5	RMSZ	# Z >5
1	A	0.49	0/3877	0.70	2/5252 (0.0%)
1	B	0.49	0/3917	0.68	0/5303
1	C	0.48	0/3863	0.69	0/5233
All	All	0.49	0/11657	0.69	2/15788 (0.0%)

There are no bond length outliers.

All (2) bond angle outliers are listed below:

Mol	Chain	Res	Type	Atoms	Z	Observed(°)	Ideal(°)
1	A	382	ARG	NE-CZ-NH1	5.34	122.97	120.30
1	A	326	ARG	NE-CZ-NH1	5.06	122.83	120.30

There are no chirality outliers.

There are no planarity outliers.

5.2 Close contacts i

In the following table, the Non-H and H(model) columns list the number of non-hydrogen atoms and hydrogen atoms in the chain respectively. The H(added) column lists the number of hydrogens added by MolProbity. The Clashes column lists the number of clashes within the asymmetric unit, and the number in parentheses is this value normalized per 1000 atoms of the molecule in the chain. The Symm-Clashes column gives symmetry related clashes, in the same way as for the Clashes column.

Mol	Chain	Non-H	H(model)	H(added)	Clashes	Symm-Clashes
1	A	3784	0	3743	32	0
1	B	3822	0	3789	29	0
1	C	3765	0	3725	40	1
2	A	78	0	28	3	0

Continued on next page...

Continued from previous page...

Mol	Chain	Non-H	H(model)	H(added)	Clashes	Symm-Clashes
2	B	78	0	28	0	0
2	C	78	0	28	2	0
3	A	30	0	0	0	0
3	B	20	0	0	1	0
4	A	275	0	0	1	0
4	B	260	0	0	1	0
4	C	217	0	0	2	0
All	All	12407	0	11341	100	1

Clashscore is defined as the number of clashes calculated for the entry per 1000 atoms (including hydrogens) of the entry. The overall clashscore for this entry is 4.

The worst 5 of 100 close contacts within the same asymmetric unit are listed below.

Atom-1	Atom-2	Distance(Å)	Clash(Å)
2:A:601:20V:NBJ	2:A:601:20V:OAJ	1.59	1.31
1:B:467:ALA:HB3	1:B:468:GLN:NE2	1.82	0.95
1:A:433:HIS:HA	1:A:434:ALA:HB3	1.58	0.85
1:C:238:HIS:HD2	1:C:348:SER:OG	1.62	0.82
1:A:29:PHE:O	1:A:423:HIS:HE1	1.61	0.81

All (1) symmetry-related close contacts are listed below. The label for Atom-2 includes the symmetry operator and encoded unit-cell translations to be applied.

Atom-1	Atom-2	Distance(Å)	Clash(Å)
1:C:234:ASN:OD1	1:C:234:ASN:OD1[2_656]	1.87	0.33

5.3 Torsion angles

5.3.1 Protein backbone ⓘ

In the following table, the Percentiles column shows the percent Ramachandran outliers of the chain as a percentile score with respect to all X-ray entries followed by that with respect to entries of similar resolution.

The Analysed column shows the number of residues for which the backbone conformation was analysed, and the total number of residues.

Mol	Chain	Analysed	Favoured	Allowed	Outliers	Percentiles	
1	A	470/515 (91%)	453 (96%)	17 (4%)	0	100	100
1	B	474/515 (92%)	460 (97%)	13 (3%)	1 (0%)	56	74

Continued on next page...

Continued from previous page...

Mol	Chain	Analysed	Favoured	Allowed	Outliers	Percentiles	
1	C	469/515 (91%)	439 (94%)	28 (6%)	2 (0%)	43	61
All	All	1413/1545 (92%)	1352 (96%)	58 (4%)	3 (0%)	56	74

All (3) Ramachandran outliers are listed below:

Mol	Chain	Res	Type
1	C	45	ALA
1	C	35	GLU
1	B	300	SER

5.3.2 Protein sidechains ⓘ

In the following table, the Percentiles column shows the percent sidechain outliers of the chain as a percentile score with respect to all X-ray entries followed by that with respect to entries of similar resolution. The Analysed column shows the number of residues for which the sidechain conformation was analysed, and the total number of residues.

Mol	Chain	Analysed	Rotameric	Outliers	Percentiles	
1	A	406/441 (92%)	394 (97%)	12 (3%)	53	75
1	B	411/441 (93%)	393 (96%)	18 (4%)	39	58
1	C	405/441 (92%)	387 (96%)	18 (4%)	39	58
All	All	1222/1323 (92%)	1174 (96%)	48 (4%)	43	64

5 of 48 residues with a non-rotameric sidechain are listed below:

Mol	Chain	Res	Type
1	B	380	GLU
1	B	440	LEU
1	C	461	ARG
1	B	388	ILE
1	B	408	ARG

Some sidechains can be flipped to improve hydrogen bonding and reduce clashes. 5 of 27 such sidechains are listed below:

Mol	Chain	Res	Type
1	B	232	HIS
1	B	334	GLN
1	C	334	GLN
1	B	238	HIS

Continued on next page...

Continued from previous page...

Mol	Chain	Res	Type
1	A	232	HIS

5.3.3 RNA ⓘ

There are no RNA chains in this entry.

5.4 Non-standard residues in protein, DNA, RNA chains ⓘ

There are no non-standard protein/DNA/RNA residues in this entry.

5.5 Carbohydrates ⓘ

There are no carbohydrates in this entry.

5.6 Ligand geometry ⓘ

16 ligands are modelled in this entry.

In the following table, the Counts columns list the number of bonds (or angles) for which Mogul statistics could be retrieved, the number of bonds (or angles) that are observed in the model and the number of bonds (or angles) that are defined in the chemical component dictionary. The Link column lists molecule types, if any, to which the group is linked. The Z score for a bond length (or angle) is the number of standard deviations the observed value is removed from the expected value. A bond length (or angle) with $|Z| > 2$ is considered an outlier worth inspection. RMSZ is the root-mean-square of all Z scores of the bond lengths (or angles).

Mol	Type	Chain	Res	Link	Bond lengths			Bond angles		
					Counts	RMSZ	# $ Z > 2$	Counts	RMSZ	# $ Z > 2$
2	20V	A	601	-	41,41,41	4.02	12 (29%)	64,64,64	2.02	17 (26%)
2	20V	A	602	-	41,41,41	2.89	12 (29%)	64,64,64	2.08	22 (34%)
3	SO4	A	603	-	4,4,4	0.44	0	6,6,6	0.26	0
3	SO4	A	604	-	4,4,4	0.40	0	6,6,6	0.17	0
3	SO4	A	605	-	4,4,4	0.37	0	6,6,6	0.14	0
3	SO4	A	606	-	4,4,4	0.47	0	6,6,6	0.19	0
3	SO4	A	607	-	4,4,4	0.46	0	6,6,6	0.17	0
3	SO4	A	608	-	4,4,4	0.77	0	6,6,6	0.55	0
2	20V	B	601	-	41,41,41	3.52	14 (34%)	64,64,64	1.97	17 (26%)
2	20V	B	602	-	41,41,41	3.31	14 (34%)	64,64,64	2.06	15 (23%)
3	SO4	B	603	-	4,4,4	0.40	0	6,6,6	0.48	0
3	SO4	B	604	-	4,4,4	0.55	0	6,6,6	0.31	0

Mol	Type	Chain	Res	Link	Bond lengths			Bond angles		
					Counts	RMSZ	# Z > 2	Counts	RMSZ	# Z > 2
3	SO4	B	605	-	4,4,4	0.60	0	6,6,6	0.32	0
3	SO4	B	606	-	4,4,4	0.46	0	6,6,6	0.16	0
2	20V	C	601	-	41,41,41	3.68	15 (36%)	64,64,64	1.99	17 (26%)
2	20V	C	602	-	41,41,41	2.57	14 (34%)	64,64,64	1.89	13 (20%)

In the following table, the Chirals column lists the number of chiral outliers, the number of chiral centers analysed, the number of these observed in the model and the number defined in the chemical component dictionary. Similar counts are reported in the Torsion and Rings columns. '-' means no outliers of that kind were identified.

Mol	Type	Chain	Res	Link	Chirals	Torsions	Rings
2	20V	A	601	-	-	0/28/29/29	0/3/3/3
2	20V	A	602	-	-	0/28/29/29	0/3/3/3
3	SO4	A	603	-	-	0/0/0/0	0/0/0/0
3	SO4	A	604	-	-	0/0/0/0	0/0/0/0
3	SO4	A	605	-	-	0/0/0/0	0/0/0/0
3	SO4	A	606	-	-	0/0/0/0	0/0/0/0
3	SO4	A	607	-	-	0/0/0/0	0/0/0/0
3	SO4	A	608	-	-	0/0/0/0	0/0/0/0
2	20V	B	601	-	-	0/28/29/29	0/3/3/3
2	20V	B	602	-	-	0/28/29/29	0/3/3/3
3	SO4	B	603	-	-	0/0/0/0	0/0/0/0
3	SO4	B	604	-	-	0/0/0/0	0/0/0/0
3	SO4	B	605	-	-	0/0/0/0	0/0/0/0
3	SO4	B	606	-	-	0/0/0/0	0/0/0/0
2	20V	C	601	-	-	0/28/29/29	0/3/3/3
2	20V	C	602	-	-	0/28/29/29	0/3/3/3

The worst 5 of 81 bond length outliers are listed below:

Mol	Chain	Res	Type	Atoms	Z	Observed(Å)	Ideal(Å)
2	A	601	20V	OAJ-NBJ	18.05	1.59	1.25
2	C	601	20V	OAJ-NBJ	14.62	1.53	1.25
2	B	601	20V	OAJ-NBJ	13.46	1.51	1.25
2	B	602	20V	OAJ-NBJ	11.52	1.47	1.25
2	A	601	20V	OAI-NBJ	10.56	1.44	1.22

The worst 5 of 101 bond angle outliers are listed below:

Mol	Chain	Res	Type	Atoms	Z	Observed(°)	Ideal(°)
2	B	602	20V	OAM-SBL-CBF	8.32	115.64	106.20
2	C	601	20V	CBD-NAV-NAU	7.74	123.34	113.11

Continued on next page...

Continued from previous page...

Mol	Chain	Res	Type	Atoms	Z	Observed(°)	Ideal(°)
2	B	601	20V	CBD-NAV-NAU	7.55	123.09	113.11
2	A	601	20V	CBD-NAV-NAU	7.35	122.83	113.11
2	C	601	20V	OAF-SBM-CBG	5.68	112.64	106.20

There are no chirality outliers.

There are no torsion outliers.

There are no ring outliers.

5.7 Other polymers ⓘ

There are no such residues in this entry.

5.8 Polymer linkage issues

There are no chain breaks in this entry.

6 Fit of model and data ⓘ

6.1 Protein, DNA and RNA chains ⓘ

In the following table, the column labelled ‘#RSRZ > 2’ contains the number (and percentage) of RSRZ outliers, followed by percent RSRZ outliers for the chain as percentile scores relative to all X-ray entries and entries of similar resolution. The OWAB column contains the minimum, median, 95th percentile and maximum values of the occupancy-weighted average B-factor per residue. The column labelled ‘Q < 0.9’ lists the number of (and percentage) of residues with an average occupancy less than 0.9.

Mol	Chain	Analysed	<RSRZ>	#RSRZ > 2	OWAB(Å ²)	Q < 0.9
1	A	476/515 (92%)	-0.12	6 (1%) 74 73	20, 35, 77, 126	5 (1%)
1	B	480/515 (93%)	-0.12	5 (1%) 79 79	21, 37, 86, 118	2 (0%)
1	C	474/515 (92%)	0.15	18 (3%) 38 36	20, 46, 84, 117	5 (1%)
All	All	1430/1545 (92%)	-0.03	29 (2%) 62 59	20, 39, 83, 126	12 (0%)

The worst 5 of 29 RSRZ outliers are listed below:

Mol	Chain	Res	Type	RSRZ
1	A	432	GLY	5.0
1	B	467	ALA	4.1
1	C	475	VAL	3.2
1	C	46	TYR	3.1
1	C	463	SER	3.0

6.2 Non-standard residues in protein, DNA, RNA chains ⓘ

There are no non-standard protein/DNA/RNA residues in this entry.

6.3 Carbohydrates ⓘ

There are no carbohydrates in this entry.

6.4 Ligands ⓘ

In the following table, the Atoms column lists the number of modelled atoms in the group and the number defined in the chemical component dictionary. LLDF column lists the quality of electron density of the group with respect to its neighbouring residues in protein, DNA or RNA chains. The B-factors column lists the minimum, median, 95th percentile and maximum values of B factors

of atoms in the group. The column labelled 'Q< 0.9' lists the number of atoms with occupancy less than 0.9.

Mol	Type	Chain	Res	Atoms	RSR	LLDF	B-factors(\AA^2)	Q<0.9
3	SO4	A	606	5/5	0.26	6.24	87,110,130,138	0
3	SO4	A	604	5/5	0.20	3.94	112,115,123,151	0
2	20V	A	601	39/39	0.21	1.36	47,57,107,110	0
2	20V	A	602	39/39	0.19	1.14	48,72,99,114	0
3	SO4	A	608	5/5	0.16	1.00	45,67,75,85	0
3	SO4	B	606	5/5	0.20	0.87	89,92,108,110	0
3	SO4	A	603	5/5	0.17	0.86	48,63,74,95	0
2	20V	B	602	39/39	0.18	0.66	46,70,91,98	0
2	20V	B	601	39/39	0.18	0.41	39,54,103,107	0
3	SO4	B	603	5/5	0.15	0.41	50,54,67,68	0
3	SO4	A	605	5/5	0.15	0.25	75,76,98,98	0
2	20V	C	601	39/39	0.14	-0.20	35,55,98,99	0
2	20V	C	602	39/39	0.17	-0.33	42,65,88,100	0
3	SO4	B	604	5/5	0.12	-0.70	48,59,68,71	0
3	SO4	A	607	5/5	0.09	-	54,55,66,74	0
3	SO4	B	605	5/5	0.08	-	47,54,68,73	0

6.5 Other polymers ⓘ

There are no such residues in this entry.