



# wwPDB X-ray Structure Validation Summary Report

Sep 22, 2014 – 10:52 PM EDT

PDB ID : 4O8J  
Title : Crystal structure of RtcA, the RNA 3'-terminal phosphate cyclase from *Pyrococcus horikoshii*, in complex with rACAAA3'phosphate and adenine.  
Authors : Desai, K.K.; Bingman, C.A.; Phillips Jr, G.N.; Raines, R.T.  
Deposited on : 2013-12-27  
Resolution : 2.04 Å(reported)

This is a wwPDB validation summary report for a publicly released PDB entry.

We welcome your comments at [validation@mail.wwpdb.org](mailto:validation@mail.wwpdb.org)

A user guide is available at <http://wwpdb.org/ValidationPDFNotes.html>

---

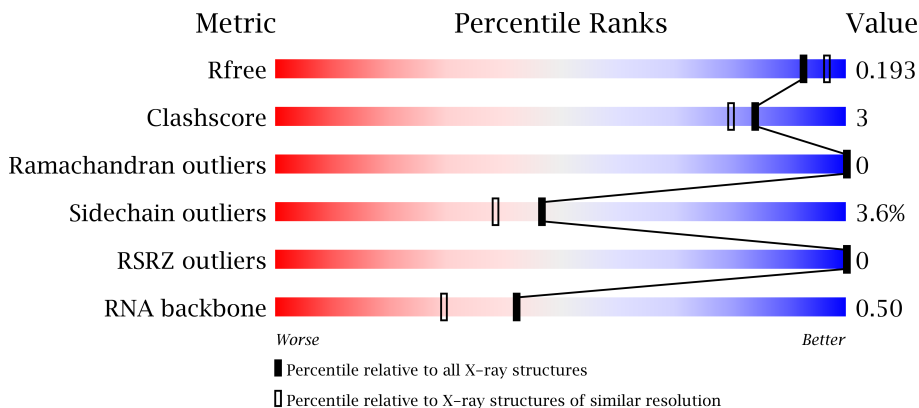
The following versions of software and data (see [references](#)) were used in the production of this report:

MolProbity	:	4.02b-467
Mogul	:	1.16 November 2013
Xtriage (Phenix)	:	dev-1439
EDS	:	stable23489
Percentile statistics	:	21963
Refmac	:	5.8.0049
CCP4	:	6.3.0 (Settle)
Ideal geometry (proteins)	:	Engh & Huber (2001)
Ideal geometry (DNA, RNA)	:	Parkinson et. al. (1996)
Validation Pipeline (wwPDB-VP)	:	stable23489

# 1 Overall quality at a glance





The reported resolution of this entry is 2.04 Å.

Percentile scores (ranging between 0-100) for global validation metrics of the entry are shown in the following graphic. The table shows the number of entries on which the scores are based.



Metric	Whole archive (#Entries)	Similar resolution (#Entries, resolution range(Å))
$R_{free}$	66092	1380 (2.06-2.02)
Clashscore	79885	1577 (2.06-2.02)
Ramachandran outliers	78287	1565 (2.06-2.02)
Sidechain outliers	78261	1565 (2.06-2.02)
RSRZ outliers	66119	1381 (2.06-2.02)
RNA backbone	1838	1010 (2.96-1.12)

The table below summarises the geometric issues observed across the polymeric chains and their fit to the electron density. The red, orange, yellow and green segments on the lower bar indicate the fraction of residues that contain outliers for  $\geq 3$ , 2, 1 and 0 types of geometric quality criteria. The upper red bar (where present) indicates the fraction of residues that have poor fit to the electron density.

Mol	Chain	Length	Quality of chain
1	A	341	
1	B	341	
2	D	6	
2	E	6	

The following table lists non-polymeric compounds that are outliers for geometric or electron-density-fit criteria:

Mol	Type	Chain	Res	Geometry	Electron density
4	EPE	B	402	-	X

## 2 Entry composition

There are 5 unique types of molecules in this entry. The entry contains 11787 atoms, of which 5639 are hydrogens and 0 are deuterium.

In the tables below, the ZeroOcc column contains the number of atoms modelled with zero occupancy, the AltConf column contains the number of residues with at least one atom in alternate conformation and the Trace column contains the number of residues modelled with at most 2 atoms.

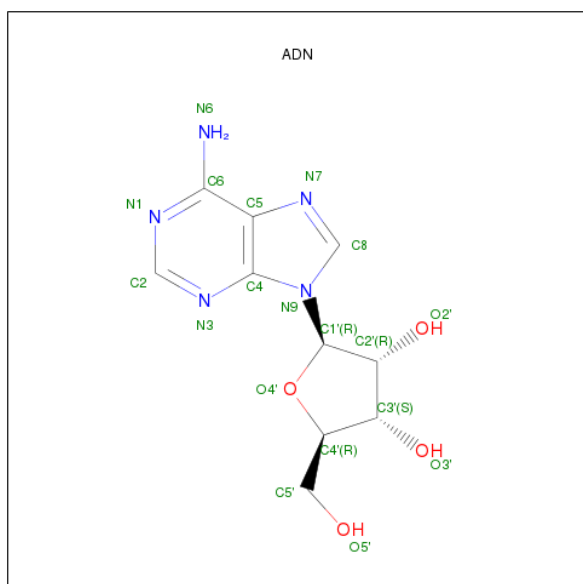
- Molecule 1 is a protein called RNA 3'-terminal phosphate cyclase.

Mol	Chain	Residues	Atoms						ZeroOcc	AltConf	Trace
1	A	341	Total	C	H	N	O	S	0	3	0
			5389	1685	2749	475	475	5			
1	B	341	Total	C	H	N	O	S	0	1	0
			5363	1677	2736	472	473	5			

- Molecule 2 is a RNA chain called RNA.

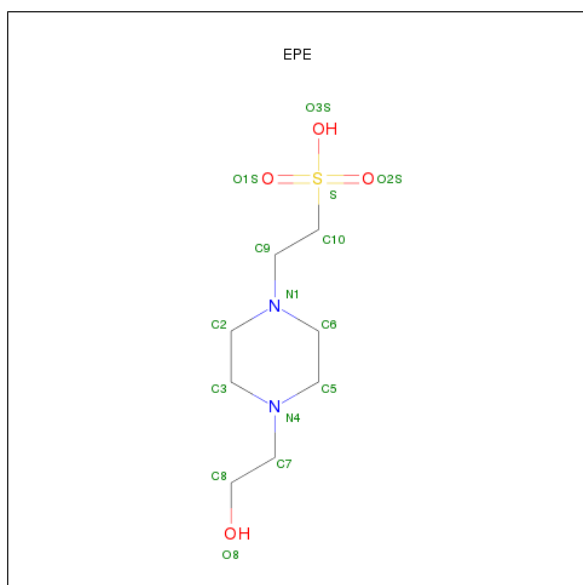
Mol	Chain	Residues	Atoms						ZeroOcc	AltConf	Trace
2	D	6	Total	C	H	N	O	P	0	0	0
			165	49	56	23	32	5			
2	E	6	Total	C	H	N	O	P	0	0	0
			165	49	56	23	32	5			

- Molecule 3 is ADENOSINE (three-letter code: ADN) (formula: C<sub>10</sub>H<sub>13</sub>N<sub>5</sub>O<sub>4</sub>).



Mol	Chain	Residues	Atoms					ZeroOcc	AltConf
3	A	1	Total	C	H	N	O	0	0
			32	10	13	5	4		
3	B	1	Total	C	H	N	O	0	0
			31	10	12	5	4		

- Molecule 4 is 4-(2-HYDROXYETHYL)-1-PIPERAZINEETHANESULFONIC ACID (three-letter code: EPE) (formula: C<sub>8</sub>H<sub>18</sub>N<sub>2</sub>O<sub>4</sub>S).



Mol	Chain	Residues	Atoms						ZeroOcc	AltConf
4	B	1	Total	C	H	N	O	S	0	0
			32	8	17	2	4	1		

- Molecule 5 is water.

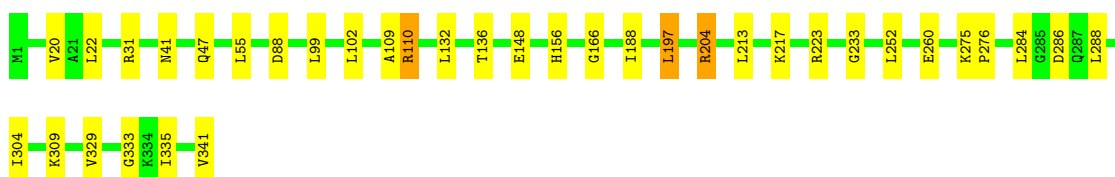
Mol	Chain	Residues	Atoms		ZeroOcc	AltConf
5	A	300	Total	O	0	0
			300	300		
5	B	291	Total	O	0	0
			291	291		
5	D	8	Total	O	0	0
			8	8		
5	E	11	Total	O	0	0
			11	11		

### 3 Residue-property plots

These plots are drawn for all protein, RNA and DNA chains in the entry. The first graphic for a chain summarises the proportions of errors displayed in the second graphic. The second graphic shows the sequence view annotated by issues in geometry and electron density. Residues are color-coded according to the number of geometric quality criteria for which they contain at least one outlier: green = 0, yellow = 1, orange = 2 and red = 3 or more. A red dot above a residue indicates a poor fit to the electron density ( $RSRZ > 2$ ). Stretches of 2 or more consecutive residues without any outlier are shown as a green connector. Residues present in the sample, but not in the model, are shown in grey.

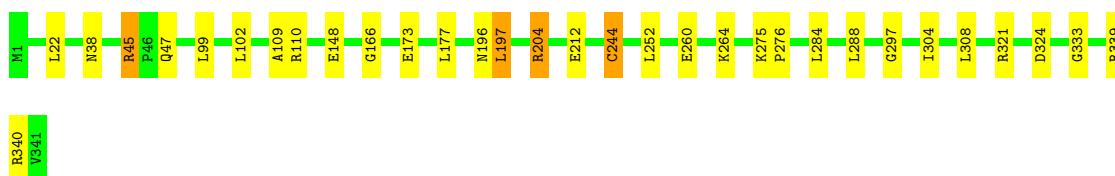
- Molecule 1: RNA 3'-terminal phosphate cyclase

Chain A: 



- Molecule 1: RNA 3'-terminal phosphate cyclase

Chain B: 



- Molecule 2: RNA

Chain D: 



- Molecule 2: RNA

Chain E: 



## 4 Data and refinement statistics

Property	Value	Source
Space group	P 21 21 21	Depositor
Cell constants a, b, c, $\alpha$ , $\beta$ , $\gamma$	83.92Å 110.26Å 127.65Å 90.00° 90.00° 90.00°	Depositor
Resolution (Å)	46.14 – 2.04 46.14 – 2.04	Depositor EDS
% Data completeness (in resolution range)	94.4 (46.14-2.04) 89.4 (46.14-2.04)	Depositor EDS
$R_{merge}$	(Not available)	Depositor
$R_{sym}$	(Not available)	Depositor
$\langle I/\sigma(I) \rangle$ <sup>1</sup>	2.92 (at 2.05Å)	Xtriage
Refinement program	PHENIX (phenix.refine: 1.8.1069)	Depositor
R, $R_{free}$	0.159 , 0.198 0.154 , 0.193	Depositor DCC
$R_{free}$ test set	1847 reflections (2.72%)	DCC
Wilson B-factor (Å <sup>2</sup> )	24.5	Xtriage
Anisotropy	0.071	Xtriage
Bulk solvent $k_{sol}$ (e/Å <sup>3</sup> ), $B_{sol}$ (Å <sup>2</sup> )	0.42 , 56.1	EDS
Estimated twinning fraction	No twinning to report.	Xtriage
L-test for twinning	$\langle  L  \rangle = 0.50$ , $\langle L^2 \rangle = 0.33$	Xtriage
Outliers	0 of 71784 reflections	Xtriage
$F_o, F_c$ correlation	0.96	EDS
Total number of atoms	11787	wwPDB-VP
Average B, all atoms (Å <sup>2</sup> )	51.0	wwPDB-VP

Xtriage's analysis on translational NCS is as follows: *The largest off-origin peak in the Patterson function is 3.59% of the height of the origin peak. No significant pseudotranslation is detected.*

<sup>1</sup>Intensities estimated from amplitudes.

## 5 Model quality

### 5.1 Standard geometry

Bond lengths and bond angles in the following residue types are not validated in this section: ADN, EPE

The Z score for a bond length (or angle) is the number of standard deviations the observed value is removed from the expected value. A bond length (or angle) with  $|Z| > 5$  is considered an outlier worth inspection. RMSZ is the root-mean-square of all Z scores of the bond lengths (or angles).

Mol	Chain	Bond lengths		Bond angles	
		RMSZ	$\# Z  > 5$	RMSZ	$\# Z  > 5$
1	A	0.58	0/2699	0.74	5/3650 (0.1%)
1	B	0.57	0/2680	0.73	7/3625 (0.2%)
2	D	0.97	0/122	1.48	2/189 (1.1%)
2	E	1.02	0/122	1.68	7/189 (3.7%)
All	All	0.60	0/5623	0.80	21/7653 (0.3%)

There are no bond length outliers.

The worst 5 of 21 bond angle outliers are listed below:

Mol	Chain	Res	Type	Atoms	Z	Observed(°)	Ideal(°)
1	A	204	ARG	NE-CZ-NH1	11.56	126.08	120.30
2	E	5	A	N1-C6-N6	8.58	123.75	118.60
1	A	204	ARG	NE-CZ-NH2	-8.30	116.15	120.30
1	A	31	ARG	NE-CZ-NH2	-8.10	116.25	120.30
1	B	339	ARG	NE-CZ-NH1	7.60	124.10	120.30

There are no chirality outliers.

There are no planarity outliers.

### 5.2 Close contacts

In the following table, the Non-H and H(model) columns list the number of non-hydrogen atoms and hydrogen atoms in the chain respectively. The H(added) column lists the number of hydrogens added by MolProbity. The Clashes column lists the number of clashes within the asymmetric unit, and the number in parentheses is this value normalized per 1000 atoms of the molecule in the chain. The Symm-Clashes column gives symmetry related clashes, in the same way as for the Clashes column.

Mol	Chain	Non-H	H(model)	H(added)	Clashes	Symm-Clashes
1	A	2640	2749	1	17	0
1	B	2627	2736	1	14	0
2	D	109	56	0	0	0
2	E	109	56	0	0	0
3	A	19	13	0	0	0
3	B	19	12	1	0	0
4	B	15	17	0	1	0
5	A	300	0	0	3	1
5	B	291	0	0	3	0
5	D	8	0	0	1	0
5	E	11	0	0	0	0
All	All	6148	5639	3	32	1

Clashscore is defined as the number of clashes calculated for the entry per 1000 atoms (including hydrogens) of the entry. The overall clashscore for this entry is 3.

The worst 5 of 32 close contacts within the same asymmetric unit are listed below.

Atom-1	Atom-2	Distance(Å)	Clash(Å)
1:A:88[B]:ASP:OD1	5:A:663:HOH:O	1.91	0.87
1:A:204:ARG:HD2	1:A:260:GLU:OE2	1.81	0.80
1:B:204:ARG:HD2	1:B:260:GLU:OE2	1.87	0.73
1:B:244[A]:CYS:SG	5:B:782:HOH:O	2.52	0.68
1:A:109:ALA:O	1:A:110:ARG:HB2	2.07	0.54

All (1) symmetry-related close contacts are listed below. The label for Atom-2 includes the symmetry operator and encoded unit-cell translations to be applied.

Atom-1	Atom-2	Distance(Å)	Clash(Å)
5:A:602:HOH:O	5:A:799:HOH:O[3_655]	2.11	0.09

## 5.3 Torsion angles

### 5.3.1 Protein backbone ⓘ

In the following table, the Percentiles column shows the percent Ramachandran outliers of the chain as a percentile score with respect to all X-ray entries followed by that with respect to entries of similar resolution.

The Analysed column shows the number of residues for which the backbone conformation was analysed, and the total number of residues.



Mol	Chain	Analysed	Favoured	Allowed	Outliers	Percentiles	
1	A	342/341 (100%)	332 (97%)	10 (3%)	0	100	100
1	B	340/341 (100%)	329 (97%)	11 (3%)	0	100	100
All	All	682/682 (100%)	661 (97%)	21 (3%)	0	100	100

There are no Ramachandran outliers to report.

### 5.3.2 Protein sidechains ⓘ

In the following table, the Percentiles column shows the percent sidechain outliers of the chain as a percentile score with respect to all X-ray entries followed by that with respect to entries of similar resolution. The Analysed column shows the number of residues for which the sidechain conformation was analysed, and the total number of residues.

Mol	Chain	Analysed	Rotameric	Outliers	Percentiles	
1	A	282/279 (101%)	271 (96%)	11 (4%)	43	35
1	B	280/279 (100%)	271 (97%)	9 (3%)	51	44
All	All	562/558 (101%)	542 (96%)	20 (4%)	47	38

5 of 20 residues with a non-rotameric sidechain are listed below:

Mol	Chain	Res	Type
1	A	286	ASP
1	A	288	LEU
1	B	252	LEU
1	A	252	LEU
1	A	284	LEU

Some sidechains can be flipped to improve hydrogen bonding and reduce clashes. There are no such sidechains identified.

### 5.3.3 RNA ⓘ

Mol	Chain	Analysed	Backbone Outliers	Pucker Outliers
2	D	4/6 (66%)	0	0
2	E	4/6 (66%)	0	0
All	All	8/12 (66%)	0	0

There are no RNA backbone outliers to report.

There are no RNA pucker outliers to report.

## 5.4 Non-standard residues in protein, DNA, RNA chains ⓘ

There are no non-standard protein/DNA/RNA residues in this entry.

## 5.5 Carbohydrates ⓘ

There are no carbohydrates in this entry.

## 5.6 Ligand geometry ⓘ

3 ligands are modelled in this entry.

In the following table, the Counts columns list the number of bonds (or angles) for which Mogul statistics could be retrieved, the number of bonds (or angles) that are observed in the model and the number of bonds (or angles) that are defined in the chemical component dictionary. The Link column lists molecule types, if any, to which the group is linked. The Z score for a bond length (or angle) is the number of standard deviations the observed value is removed from the expected value. A bond length (or angle) with  $|Z| > 2$  is considered an outlier worth inspection. RMSZ is the root-mean-square of all Z scores of the bond lengths (or angles).

Mol	Type	Chain	Res	Link	Bond lengths			Bond angles		
					Counts	RMSZ	$\# Z  > 2$	Counts	RMSZ	$\# Z  > 2$
3	ADN	A	401	-	21,21,21	0.88	1 (4%)	31,31,31	2.11	6 (19%)
3	ADN	B	401	-	21,21,21	0.78	1 (4%)	31,31,31	2.13	7 (22%)
4	EPE	B	402	-	15,15,15	0.61	0	20,20,20	2.39	9 (45%)

In the following table, the Chirals column lists the number of chiral outliers, the number of chiral centers analysed, the number of these observed in the model and the number defined in the chemical component dictionary. Similar counts are reported in the Torsion and Rings columns. '-' means no outliers of that kind were identified.

Mol	Type	Chain	Res	Link	Chirals	Torsions	Rings
3	ADN	A	401	-	-	0/6/22/22	0/3/3/3
3	ADN	B	401	-	-	0/6/22/22	0/3/3/3
4	EPE	B	402	-	-	0/9/19/19	0/1/1/1

All (2) bond length outliers are listed below:

Mol	Chain	Res	Type	Atoms	Z	Observed(Å)	Ideal(Å)
3	A	401	ADN	C6-N6	2.28	1.42	1.34
3	B	401	ADN	C6-N6	2.15	1.41	1.34

The worst 5 of 22 bond angle outliers are listed below:

Mol	Chain	Res	Type	Atoms	Z	Observed(°)	Ideal(°)
3	B	401	ADN	N3-C2-N1	-6.96	122.77	128.89
3	A	401	ADN	N3-C2-N1	-6.28	123.36	128.89
3	B	401	ADN	C5-C4-N3	-5.80	120.32	125.98
3	A	401	ADN	N3-C4-N9	5.60	134.99	125.39
3	B	401	ADN	N3-C4-N9	5.06	134.07	125.39

There are no chirality outliers.

There are no torsion outliers.

There are no ring outliers.

## 5.7 Other polymers ⓘ

There are no such residues in this entry.

## 5.8 Polymer linkage issues

There are no chain breaks in this entry.

## 6 Fit of model and data ⓘ

### 6.1 Protein, DNA and RNA chains ⓘ

In the following table, the column labelled ‘#RSRZ> 2’ contains the number (and percentage) of RSRZ outliers, followed by percent RSRZ outliers for the chain as percentile scores relative to all X-ray entries and entries of similar resolution. The OWAB column contains the minimum, median, 95<sup>th</sup> percentile and maximum values of the occupancy-weighted average B-factor per residue. The column labelled ‘Q< 0.9’ lists the number of (and percentage) of residues with an average occupancy less than 0.9.

Mol	Chain	Analysed	<RSRZ>	#RSRZ>2	OWAB(Å <sup>2</sup> )	Q<0.9
1	A	341/341 (100%)	-0.63	0 100 100	35, 45, 59, 77	0
1	B	341/341 (100%)	-0.61	0 100 100	35, 43, 57, 67	0
2	D	6/6 (100%)	-0.78	0 100 100	37, 42, 44, 47	0
2	E	6/6 (100%)	-0.86	0 100 100	39, 49, 50, 64	0
All	All	694/694 (100%)	-0.62	0 100 100	35, 44, 58, 77	0

There are no RSRZ outliers to report.

### 6.2 Non-standard residues in protein, DNA, RNA chains ⓘ

There are no non-standard protein/DNA/RNA residues in this entry.

### 6.3 Carbohydrates ⓘ

There are no carbohydrates in this entry.

### 6.4 Ligands ⓘ

In the following table, the Atoms column lists the number of modelled atoms in the group and the number defined in the chemical component dictionary. LLDF column lists the quality of electron density of the group with respect to its neighbouring residues in protein, DNA or RNA chains. The B-factors column lists the minimum, median, 95<sup>th</sup> percentile and maximum values of B factors of atoms in the group. The column labelled ‘Q< 0.9’ lists the number of atoms with occupancy less than 0.9.

Mol	Type	Chain	Res	Atoms	RSR	LLDF	B-factors(Å <sup>2</sup> )	Q<0.9
4	EPE	B	402	15/15	0.36	9.12	44,57,63,71	0
3	ADN	A	401	19/19	0.10	1.44	39,53,68,85	0
3	ADN	B	401	19/19	0.06	-1.38	37,48,59,67	0

## 6.5 Other polymers ⓘ

There are no such residues in this entry.