



# Full wwPDB X-ray Structure Validation Report ⓘ

May 14, 2014 – 11:31 AM EDT

PDB ID : 4OC4  
Title : X-ray structure of of human glutamate carboxypeptidase II (GCPII) in a complex with CPIBzL, a urea-based inhibitor N 2 -{[(1S)-1-carboxy-2-(pyridin-4-yl)ethyl]carbamoyl}-N 6 -(4-iodobenzoyl)-L-lysine  
Authors : Pavlicek, J.; Ptacek, J.; Cerny, J.; Byun, Y.; Skultetyova, L.; Pomper, M.; Lubkowski, J.; Barinka, C.  
Deposited on : 2014-01-08  
Resolution : 1.66 Å(reported)

This is a full wwPDB validation report for a publicly released PDB entry.  
We welcome your comments at [validation@mail.wwpdb.org](mailto:validation@mail.wwpdb.org)  
A user guide is available at <http://wwpdb.org/ValidationPDFNotes.html>

---

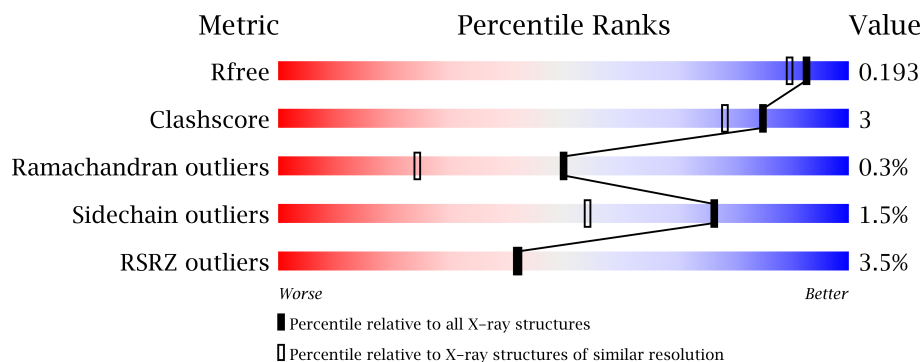
The following versions of software and data (see [references](#)) were used in the production of this report:

MolProbity : 4.02b-467  
Mogul : 1.16 November 2013  
Xtriage (Phenix) : dev-1439  
EDS : stable22978  
Percentile statistics : 21963  
Refmac : 5.8.0049  
CCP4 : 6.3.0 (Settle)  
Ideal geometry (proteins) : Engh & Huber (2001)  
Ideal geometry (DNA, RNA) : Parkinson et. al. (1996)  
Validation Pipeline (wwPDB-VP) : stable22978

# 1 Overall quality at a glance


The reported resolution of this entry is 1.66 Å.

Percentile scores (ranging between 0-100) for global validation metrics of the entry are shown in the following graphic. The table shows the number of entries on which the scores are based.



Metric	Whole archive (#Entries)	Similar resolution (#Entries, resolution range(Å))
$R_{free}$	66092	1404 (1.68-1.64)
Clashscore	79885	1001 (1.66-1.66)
Ramachandran outliers	78287	1581 (1.68-1.64)
Sidechain outliers	78261	1580 (1.68-1.64)
RSRZ outliers	66119	1404 (1.68-1.64)

The table below summarises the geometric issues observed across the polymeric chains and their fit to the electron density. The red, orange, yellow and green segments on the lower bar indicate the fraction of residues that contain outliers for  $\geq 3$ , 2, 1 and 0 types of geometric quality criteria. The upper red bar (where present) indicates the fraction of residues that have poor fit to the electron density.

Mol	Chain	Length	Quality of chain
1	A	709	

The following table lists non-polymeric compounds that are outliers for geometric or electron-density-fit criteria:

Mol	Type	Chain	Res	Geometry	Electron density
3	NAG	A	803	-	X
3	NAG	A	806	-	X
3	NAG	A	807	-	X

## 2 Entry composition

There are 9 unique types of molecules in this entry. The entry contains 6364 atoms, of which 0 are hydrogen and 0 are deuterium.

In the tables below, the ZeroOcc column contains the number of atoms modelled with zero occupancy, the AltConf column contains the number of residues with at least one atom in alternate conformation and the Trace column contains the number of residues modelled with at most 2 atoms.

- Molecule 1 is a protein called Glutamate carboxypeptidase 2.

Mol	Chain	Residues	Atoms					ZeroOcc	AltConf	Trace
1	A	690	Total	C	N	O	S	0	62	0
			5784	3715	970	1076	23			

There are 2 discrepancies between the modelled and reference sequences:

Chain	Residue	Modelled	Actual	Comment	Reference
A	42	ARG	-	EXPRESSION TAG	UNP Q04609
A	43	SER	-	EXPRESSION TAG	UNP Q04609

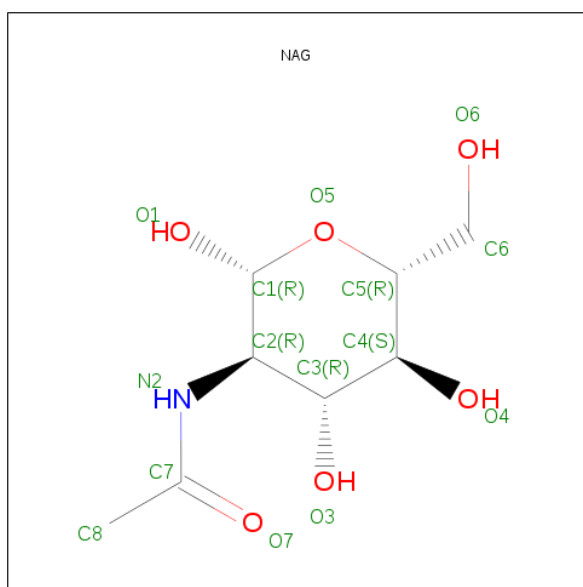
- Molecule 2 is a polymer of unknown type called SUGAR (2-MER).

Mol	Chain	Residues	Atoms				ZeroOcc	AltConf
2	A	2	Total	C	N	O	0	0
			28	16	2	10		
2	A	2	Total	C	N	O	0	0
			28	16	2	10		
2	A	2	Total	C	N	O	0	0
			28	16	2	10		

There are 6 discrepancies between the modelled and reference sequences:

Chain	Residue	Modelled	Actual	Comment	Reference
A	42	ARG	-	EXPRESSION TAG	UNP Q04609
A	43	SER	-	EXPRESSION TAG	UNP Q04609
A	42	ARG	-	EXPRESSION TAG	UNP Q04609
A	43	SER	-	EXPRESSION TAG	UNP Q04609
A	42	ARG	-	EXPRESSION TAG	UNP Q04609
A	43	SER	-	EXPRESSION TAG	UNP Q04609

- Molecule 3 is SUGAR (N-ACETYL-D-GLUCOSAMINE) (three-letter code: NAG) (formula: C<sub>8</sub>H<sub>15</sub>NO<sub>6</sub>).



Mol	Chain	Residues	Atoms				ZeroOcc	AltConf
3	A	1	Total	C	N	O	0	0
			14	8	1	5		
3	A	1	Total	C	N	O	0	0
			14	8	1	5		
3	A	1	Total	C	N	O	0	0
			14	8	1	5		

- Molecule 4 is a polymer of unknown type called SUGAR (4-MER).

Mol	Chain	Residues	Atoms				ZeroOcc	AltConf
4	A	4	Total	C	N	O	0	0
			50	28	2	20		

There are 2 discrepancies between the modelled and reference sequences:

Chain	Residue	Modelled	Actual	Comment	Reference
A	42	ARG	-	EXPRESSION TAG	UNP Q04609
A	43	SER	-	EXPRESSION TAG	UNP Q04609

- Molecule 5 is ZINC ION (three-letter code: ZN) (formula: Zn).

Mol	Chain	Residues	Atoms		ZeroOcc	AltConf
5	A	2	Total	Zn	0	0
			2	2		

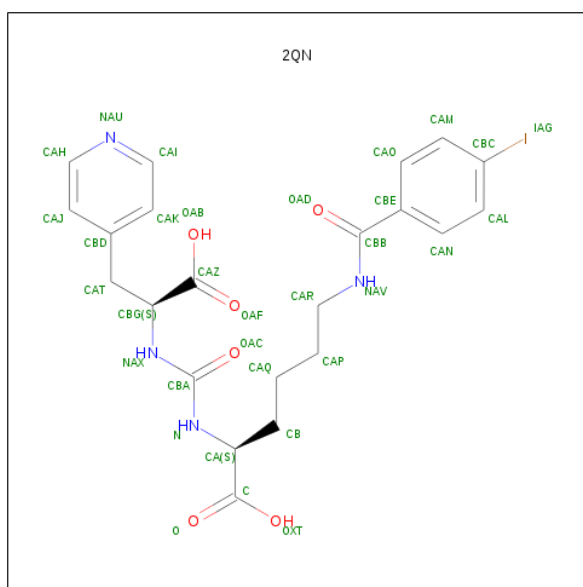
- Molecule 6 is CALCIUM ION (three-letter code: CA) (formula: Ca).

Mol	Chain	Residues	Atoms	ZeroOcc	AltConf
6	A	1	Total Ca 1 1	0	0

- Molecule 7 is CHLORIDE ION (three-letter code: CL) (formula: Cl).

Mol	Chain	Residues	Atoms	ZeroOcc	AltConf
7	A	1	Total Cl 1 1	0	0

- Molecule 8 is N 2 -{[(1S)-1-CARBOXY-2-(PYRIDIN-4-YL)ETHYL]CARBAMOYL}-N 6 -(4-IODOBENZOYL)-L-LYSINE (three-letter code: 2QN) (formula: C<sub>22</sub>H<sub>25</sub>IN<sub>4</sub>O<sub>6</sub>).



Mol	Chain	Residues	Atoms	ZeroOcc	AltConf
8	A	1	Total C I N O 33 22 1 4 6	0	0

- Molecule 9 is water.

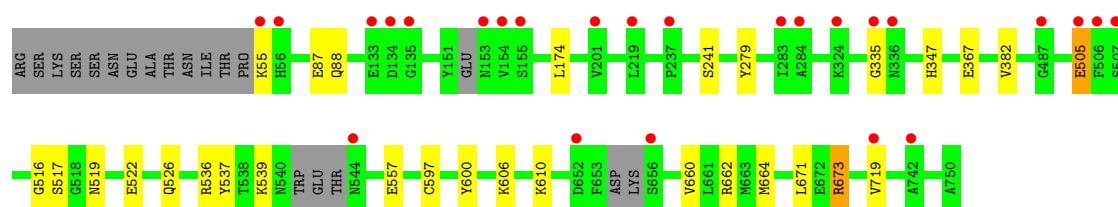
Mol	Chain	Residues	Atoms	ZeroOcc	AltConf
9	A	367	Total O 367 367	0	0

### 3 Residue-property plots

These plots are drawn for all protein, RNA and DNA chains in the entry. The first graphic for a chain summarises the proportions of errors displayed in the second graphic. The second graphic shows the sequence view annotated by issues in geometry and electron density. Residues are color-coded according to the number of geometric quality criteria for which they contain at least one outlier: green = 0, yellow = 1, orange = 2 and red = 3 or more. A red dot above a residue indicates a poor fit to the electron density ( $RSRZ > 2$ ). Stretches of 2 or more consecutive residues without any outlier are shown as a green connector. Residues present in the sample, but not in the model, are shown in grey.

- Molecule 1: Glutamate carboxypeptidase 2

Chain A: 



## 4 Data and refinement statistics

Property	Value	Source
Space group	I 2 2 2	Depositor
Cell constants a, b, c, $\alpha$ , $\beta$ , $\gamma$	101.44Å 130.46Å 159.06Å 90.00° 90.00° 90.00°	Depositor
Resolution (Å)	19.99 – 1.66 19.99 – 1.66	Depositor EDS
% Data completeness (in resolution range)	99.1 (19.99-1.66) 99.1 (19.99-1.66)	Depositor EDS
$R_{merge}$	(Not available)	Depositor
$R_{sym}$	(Not available)	Depositor
$\langle I/\sigma(I) \rangle$ <sup>1</sup>	3.49 (at 1.66Å)	Xtriage
Refinement program	REFMAC 5.5.0109	Depositor
R, $R_{free}$	0.159 , 0.191 0.163 , 0.193	Depositor DCC
$R_{free}$ test set	1590 reflections (1.31%)	DCC
Wilson B-factor (Å <sup>2</sup> )	21.4	Xtriage
Anisotropy	0.036	Xtriage
Bulk solvent $k_{sol}$ (e/Å <sup>3</sup> ), $B_{sol}$ (Å <sup>2</sup> )	0.38 , 45.6	EDS
Estimated twinning fraction	No twinning to report.	Xtriage
L-test for twinning	$\langle  L  \rangle = 0.50$ , $\langle L^2 \rangle = 0.34$	Xtriage
Outliers	0 of 122831 reflections	Xtriage
$F_o, F_c$ correlation	0.97	EDS
Total number of atoms	6364	wwPDB-VP
Average B, all atoms (Å <sup>2</sup> )	31.0	wwPDB-VP

Xtriage's analysis on translational NCS is as follows: *The largest off-origin peak in the Patterson function is 3.74% of the height of the origin peak. No significant pseudotranslation is detected.*

<sup>1</sup>Intensities estimated from amplitudes.

## 5 Model quality

### 5.1 Standard geometry

Bond lengths and bond angles in the following residue types are not validated in this section: ZN, BMA, NAG, CL, CA, 2QN, MAN

The Z score for a bond length (or angle) is the number of standard deviations the observed value is removed from the expected value. A bond length (or angle) with  $|Z| > 5$  is considered an outlier worth inspection. RMSZ is the root-mean-square of all Z scores of the bond lengths (or angles).

Mol	Chain	Bond lengths		Bond angles	
		RMSZ	$\# Z  > 5$	RMSZ	$\# Z  > 5$
1	A	0.79	1/6147 (0.0%)	0.75	3/8314 (0.0%)

All (1) bond length outliers are listed below:

Mol	Chain	Res	Type	Atoms	Z	Observed(Å)	Ideal(Å)
1	A	557	GLU	CB-CG	-5.16	1.42	1.52

All (3) bond angle outliers are listed below:

Mol	Chain	Res	Type	Atoms	Z	Observed(°)	Ideal(°)
1	A	673	ARG	NE-CZ-NH2	-5.92	117.34	120.30
1	A	174[A]	LEU	CA-CB-CG	5.01	126.83	115.30
1	A	174[B]	LEU	CA-CB-CG	5.01	126.83	115.30

There are no chirality outliers.

There are no planarity outliers.

### 5.2 Close contacts

In the following table, the Non-H and H(model) columns list the number of non-hydrogen atoms and hydrogen atoms in the chain respectively. The H(added) column lists the number of hydrogens added by MolProbity. The Clashes column lists the number of clashes within the asymmetric unit, and the number in parentheses is this value normalized per 1000 atoms of the molecule in the chain. The Symm-Clashes column gives symmetry related clashes, in the same way as for the Clashes column.

Mol	Chain	Non-H	H(model)	H(added)	Clashes	Symm-Clashes
1	A	5784	0	0	15	0
2	A	84	0	75	0	0

*Continued on next page...*

*Continued from previous page...*

Mol	Chain	Non-H	H(model)	H(added)	Clashes	Symm-Clashes
3	A	42	0	39	2	0
4	A	50	0	43	0	0
5	A	2	0	0	0	0
6	A	1	0	0	0	0
7	A	1	0	0	0	0
8	A	33	0	0	0	0
9	A	367	0	0	5	0
All	All	6364	0	157	17	0

Clashscore is defined as the number of clashes calculated for the entry per 1000 atoms (including hydrogens) of the entry. The overall clashscore for this entry is 3.

All (17) close contacts within the same asymmetric unit are listed below.

Atom-1	Atom-2	Distance(Å)	Clash(Å)
1:A:505[B]:GLU:OE1	1:A:606[B]:LYS:CE	2.15	0.94
1:A:660[A]:VAL:O	1:A:664[A]:MET:CG	2.29	0.80
1:A:597[B]:CYS:SG	1:A:671:LEU:CD2	2.70	0.79
1:A:87:GLU:C	1:A:88[C]:GLN:CA	2.56	0.73
1:A:505[B]:GLU:OE1	1:A:606[B]:LYS:NZ	2.30	0.64
1:A:719[A]:VAL:CG1	1:A:719[A]:VAL:O	2.49	0.61
1:A:505[B]:GLU:CD	1:A:606[B]:LYS:NZ	2.61	0.53
1:A:516:GLY:O	1:A:526[B]:GLN:NE2	2.42	0.52
1:A:662[B]:ARG:NE	9:A:937:HOH:O	2.42	0.52
1:A:610:LYS:CE	9:A:1064:HOH:O	2.61	0.48
1:A:367:GLU:OE1	1:A:662[A]:ARG:NH1	2.49	0.45
3:A:803:NAG:H81	9:A:1155:HOH:O	2.17	0.44
1:A:347:HIS:CE1	9:A:1167:HOH:O	2.73	0.42
1:A:517:SER:OG	1:A:522:GLU:OE2	2.39	0.41
3:A:803:NAG:H83	9:A:1091:HOH:O	2.20	0.40

There are no symmetry-related clashes.

## 5.3 Torsion angles

### 5.3.1 Protein backbone ⓘ

In the following table, the Percentiles column shows the percent Ramachandran outliers of the chain as a percentile score with respect to all X-ray entries followed by that with respect to entries of similar resolution. The Analysed column shows the number of residues for which the backbone conformation was analysed, and the total number of residues.

Mol	Chain	Analysed	Favoured	Allowed	Outliers	Percentiles
1	A	743/709 (105%)	722 (97%)	19 (3%)	2 (0%)	50 24

All (2) Ramachandran outliers are listed below:

Mol	Chain	Res	Type
1	A	382	VAL
1	A	335	GLY

### 5.3.2 Protein sidechains ⓘ

In the following table, the Percentiles column shows the percent sidechain outliers of the chain as a percentile score with respect to all X-ray entries followed by that with respect to entries of similar resolution. The Analysed column shows the number of residues for which the sidechain conformation was analysed, and the total number of residues.

Mol	Chain	Analysed	Rotameric	Outliers	Percentiles
1	A	648/605 (107%)	636 (98%)	12 (2%)	69 43

All (12) residues with a non-rotameric sidechain are listed below:

Mol	Chain	Res	Type
1	A	55	LYS
1	A	241	SER
1	A	505[A]	GLU
1	A	505[B]	GLU
1	A	519	ASN
1	A	536[A]	ARG
1	A	536[B]	ARG
1	A	536[C]	ARG
1	A	537	TYR
1	A	539[A]	LYS
1	A	600	TYR
1	A	673	ARG

Some sidechains can be flipped to improve hydrogen bonding and reduce clashes. There are no such sidechains identified.

### 5.3.3 RNA ⓘ

There are no RNA chains in this entry.

## 5.4 Non-standard residues in protein, DNA, RNA chains ⓘ

There are no non-standard protein/DNA/RNA residues in this entry.

## 5.5 Carbohydrates ⓘ

10 carbohydrates are modelled in this entry.

In the following table, the Counts columns list the number of bonds (or angles) for which Mogul statistics could be retrieved, the number of bonds (or angles) that are observed in the model and the number of bonds (or angles) that are defined in the chemical component dictionary. The Link column lists molecule types, if any, to which the group is linked. The Z score for a bond length (or angle) is the number of standard deviations the observed value is removed from the expected value. A bond length (or angle) with  $|Z| > 2$  is considered an outlier worth inspection. RMSZ is the root-mean-square of all Z scores of the bond lengths (or angles).

Mol	Type	Chain	Res	Link	Bond lengths			Bond angles		
					Counts	RMSZ	# Z  > 2	Counts	RMSZ	# Z  > 2
2	NAG	A	801	1,2	12,14,15	0.90	1 (8%)	15,19,21	1.36	3 (20%)
2	NAG	A	802	2	12,14,15	0.76	0	15,19,21	1.52	2 (13%)
2	NAG	A	804	1,2	12,14,15	0.84	0	15,19,21	1.43	3 (20%)
2	NAG	A	805	2	12,14,15	0.46	0	15,19,21	1.94	2 (13%)
2	NAG	A	808	1,2	12,14,15	1.11	1 (8%)	15,19,21	1.43	1 (6%)
2	NAG	A	809	2	12,14,15	0.57	0	15,19,21	1.11	2 (13%)
4	NAG	A	810	1,4	12,14,15	0.64	0	15,19,21	1.16	0
4	NAG	A	811	4	12,14,15	0.76	1 (8%)	15,19,21	1.69	3 (20%)
4	BMA	A	812	4	10,11,12	0.51	0	11,15,17	1.07	1 (9%)
4	MAN	A	813	4	10,11,12	0.67	0	11,15,17	1.69	2 (18%)

In the following table, the Chirals column lists the number of chiral outliers, the number of chiral centers analysed, the number of these observed in the model and the number defined in the chemical component dictionary. Similar counts are reported in the Torsion and Rings columns. '-' means no outliers of that kind were identified.

Mol	Type	Chain	Res	Link	Chirals	Torsions	Rings
2	NAG	A	801	1,2	-	0/6/23/26	0/1/1/1
2	NAG	A	802	2	-	0/6/23/26	0/1/1/1
2	NAG	A	804	1,2	-	0/6/23/26	0/1/1/1
2	NAG	A	805	2	-	0/6/23/26	0/1/1/1
2	NAG	A	808	1,2	-	0/6/23/26	0/1/1/1
2	NAG	A	809	2	-	0/6/23/26	0/1/1/1
4	NAG	A	810	1,4	-	0/6/23/26	0/1/1/1
4	NAG	A	811	4	-	0/6/23/26	0/1/1/1

*Continued on next page...*

*Continued from previous page...*

Mol	Type	Chain	Res	Link	Chirals	Torsions	Rings
4	BMA	A	812	4	-	0/2/19/22	0/1/1/1
4	MAN	A	813	4	-	0/2/19/22	0/1/1/1

All (3) bond length outliers are listed below:

Mol	Chain	Res	Type	Atoms	Z	Observed(Å)	Ideal(Å)
2	A	801	NAG	O5-C5	-2.61	1.41	1.45
2	A	808	NAG	O5-C5	-2.30	1.41	1.45
4	A	811	NAG	O5-C5	-2.07	1.42	1.45

All (19) bond angle outliers are listed below:

Mol	Chain	Res	Type	Atoms	Z	Observed(°)	Ideal(°)
2	A	805	NAG	O5-C5-C6	6.26	113.55	106.98
2	A	802	NAG	C2-N2-C7	4.17	128.44	123.39
2	A	808	NAG	O5-C5-C4	-4.12	105.42	110.65
4	A	813	MAN	O5-C5-C6	3.97	111.14	106.98
2	A	804	NAG	O5-C5-C6	3.43	110.58	106.98
4	A	811	NAG	C3-C4-C5	-3.35	104.16	110.17
4	A	813	MAN	O3-C3-C2	3.18	115.52	109.74
2	A	801	NAG	O5-C5-C6	2.85	109.97	106.98
2	A	804	NAG	C3-C2-N2	-2.80	107.42	111.62
2	A	809	NAG	C8-C7-N2	2.66	121.15	116.12
2	A	801	NAG	C3-C2-N2	-2.41	108.01	111.62
2	A	809	NAG	O7-C7-C8	-2.35	117.54	122.04
4	A	811	NAG	O5-C5-C6	2.31	109.41	106.98
4	A	811	NAG	O5-C5-C4	-2.24	107.80	110.65
2	A	801	NAG	C2-N2-C7	-2.23	120.70	123.39
2	A	802	NAG	C8-C7-N2	2.21	120.30	116.12
4	A	812	BMA	O3-C3-C2	-2.05	106.02	109.74
2	A	804	NAG	O4-C4-C3	-2.03	105.82	110.36
2	A	805	NAG	C2-N2-C7	2.02	125.83	123.39

There are no chirality outliers.

There are no torsion outliers.

There are no ring outliers.

## 5.6 Ligand geometry ⓘ

Of 8 ligands modelled in this entry, 4 are monoatomic - leaving 4 for Mogul analysis.

In the following table, the Counts columns list the number of bonds (or angles) for which Mogul statistics could be retrieved, the number of bonds (or angles) that are observed in the model and the number of bonds (or angles) that are defined in the chemical component dictionary. The Link column lists molecule types, if any, to which the group is linked. The Z score for a bond length (or angle) is the number of standard deviations the observed value is removed from the expected value. A bond length (or angle) with  $|Z| > 2$  is considered an outlier worth inspection. RMSZ is the root-mean-square of all Z scores of the bond lengths (or angles).

Mol	Type	Chain	Res	Link	Bond lengths			Bond angles		
					Counts	RMSZ	$\# Z  > 2$	Counts	RMSZ	$\# Z  > 2$
3	NAG	A	803	1	12,14,15	0.70	0	15,19,21	1.86	2 (13%)
3	NAG	A	806	1	12,14,15	0.46	0	15,19,21	1.55	3 (20%)
3	NAG	A	807	1	12,14,15	0.65	0	15,19,21	1.57	2 (13%)
8	2QN	A	818	5	34,34,34	1.29	2 (5%)	44,44,44	1.54	8 (18%)

In the following table, the Chirals column lists the number of chiral outliers, the number of chiral centers analysed, the number of these observed in the model and the number defined in the chemical component dictionary. Similar counts are reported in the Torsion and Rings columns. '-' means no outliers of that kind were identified.

Mol	Type	Chain	Res	Link	Chirals	Torsions	Rings
3	NAG	A	803	1	-	0/6/23/26	0/1/1/1
3	NAG	A	806	1	-	0/6/23/26	0/1/1/1
3	NAG	A	807	1	-	0/6/23/26	0/1/1/1
8	2QN	A	818	5	-	0/32/32/32	0/2/2/2

All (2) bond length outliers are listed below:

Mol	Chain	Res	Type	Atoms	Z	Observed(Å)	Ideal(Å)
8	A	818	2QN	CBC-IAG	4.59	2.22	2.10
8	A	818	2QN	CBE-CBB	2.80	1.55	1.50

All (15) bond angle outliers are listed below:

Mol	Chain	Res	Type	Atoms	Z	Observed(°)	Ideal(°)
3	A	803	NAG	O5-C5-C6	5.32	112.57	106.98
8	A	818	2QN	CAM-CBC-CAL	-4.54	113.36	120.66
3	A	807	NAG	O5-C5-C6	4.37	111.57	106.98
3	A	806	NAG	O5-C5-C6	4.17	111.36	106.98
8	A	818	2QN	CAL-CBC-IAG	3.45	124.92	119.69
8	A	818	2QN	CAN-CAL-CBC	3.04	124.22	119.56
8	A	818	2QN	CB-CA-N	-3.03	104.68	110.94
8	A	818	2QN	CAO-CAM-CBC	2.70	123.71	119.56

*Continued on next page...*

*Continued from previous page...*

Mol	Chain	Res	Type	Atoms	Z	Observed(°)	Ideal(°)
3	A	807	NAG	C2-N2-C7	-2.44	120.45	123.39
3	A	803	NAG	O5-C5-C4	-2.41	107.60	110.65
3	A	806	NAG	O5-C5-C4	2.24	113.49	110.65
8	A	818	2QN	CAT-CBG-CAZ	-2.21	105.97	110.54
8	A	818	2QN	CBG-NAX-CBA	-2.21	115.94	120.98
3	A	806	NAG	C6-C5-C4	-2.14	107.83	113.04
8	A	818	2QN	CAT-CBG-NAX	2.10	115.20	110.83

There are no chirality outliers.

There are no torsion outliers.

There are no ring outliers.

## 5.7 Other polymers ⓘ

There are no such residues in this entry.

## 5.8 Polymer linkage issues

There are no chain breaks in this entry.

## 6 Fit of model and data ⓘ

### 6.1 Protein, DNA and RNA chains ⓘ

In the following table, the column labelled ‘#RSRZ> 2’ contains the number (and percentage) of RSRZ outliers, followed by percent RSRZ outliers for the chain as percentile scores relative to all X-ray entries and entries of similar resolution. The OWAB column contains the minimum, median, 95<sup>th</sup> percentile and maximum values of the occupancy-weighted average B-factor per residue. The column labelled ‘Q< 0.9’ lists the number of (and percentage) of residues with an average occupancy less than 0.9.

Mol	Chain	Analysed	<RSRZ>	#RSRZ>2	OWAB(Å <sup>2</sup> )	Q<0.9
1	A	690/709 (97%)	-0.23	25 (3%) 41 41	17, 28, 48, 68	2 (0%)

All (25) RSRZ outliers are listed below:

Mol	Chain	Res	Type	RSRZ
1	A	719[A]	VAL	4.7
1	A	153	ASN	4.7
1	A	55	LYS	4.6
1	A	284	ALA	3.9
1	A	283[A]	ILE	3.7
1	A	505[A]	GLU	3.7
1	A	335	GLY	3.6
1	A	133	GLU	3.4
1	A	652	ASP	3.2
1	A	155	SER	3.1
1	A	656[A]	SER	3.0
1	A	507	SER	3.0
1	A	134	ASP	2.9
1	A	237	PRO	2.8
1	A	544	ASN	2.8
1	A	154	VAL	2.8
1	A	506	PHE	2.8
1	A	742	ALA	2.5
1	A	336	ASN	2.4
1	A	201[A]	VAL	2.4
1	A	324	LYS	2.3
1	A	56	HIS	2.2
1	A	135	GLY	2.2
1	A	219	LEU	2.2
1	A	487	GLY	2.1

## 6.2 Non-standard residues in protein, DNA, RNA chains ⓘ

There are no non-standard protein/DNA/RNA residues in this entry.

## 6.3 Carbohydrates ⓘ

In the following table, the Atoms column lists the number of modelled atoms in the group and the number defined in the chemical component dictionary. LLDF column lists the quality of electron density of the group with respect to its neighbouring residues in protein, DNA or RNA chains. The B-factors column lists the minimum, median, 95<sup>th</sup> percentile and maximum values of B factors of atoms in the group. The column labelled 'Q< 0.9' lists the number of atoms with occupancy less than 0.9.

Mol	Type	Chain	Res	Atoms	RSR	LLDF	B-factors(Å <sup>2</sup> )	Q<0.9
2	NAG	A	802	14/15	0.35	6.54	40,51,53,56	0
2	NAG	A	808	14/15	0.12	6.06	29,31,37,40	0
2	NAG	A	801	14/15	0.10	3.25	34,41,46,49	0
2	NAG	A	805	14/15	0.32	3.13	56,60,63,65	0
2	NAG	A	804	14/15	0.12	3.11	40,45,48,52	0
4	NAG	A	811	14/15	0.26	2.85	35,39,48,49	0
4	NAG	A	810	14/15	0.11	2.79	25,30,37,46	0
4	MAN	A	813	11/12	0.18	1.39	40,43,47,48	0
4	BMA	A	812	11/12	0.16	1.06	37,37,40,40	0
2	NAG	A	809	14/15	0.20	0.97	34,39,44,47	0

## 6.4 Ligands ⓘ

In the following table, the Atoms column lists the number of modelled atoms in the group and the number defined in the chemical component dictionary. LLDF column lists the quality of electron density of the group with respect to its neighbouring residues in protein, DNA or RNA chains. The B-factors column lists the minimum, median, 95<sup>th</sup> percentile and maximum values of B factors of atoms in the group. The column labelled 'Q< 0.9' lists the number of atoms with occupancy less than 0.9.

Mol	Type	Chain	Res	Atoms	RSR	LLDF	B-factors(Å <sup>2</sup> )	Q<0.9
3	NAG	A	807	14/15	0.19	4.75	31,49,54,56	0
3	NAG	A	806	14/15	0.26	3.38	58,62,64,65	0
3	NAG	A	803	14/15	0.24	2.34	42,48,50,53	0
6	CA	A	816	1/1	0.06	-0.30	19,19,19,19	0
8	2QN	A	818	33/33	0.06	-0.63	20,27,34,36	0
7	CL	A	817	1/1	0.04	-0.98	24,24,24,24	0
5	ZN	A	814	1/1	0.04	-1.49	23,23,23,23	0
5	ZN	A	815	1/1	0.02	-3.32	21,21,21,21	0

## 6.5 Other polymers ⓘ

There are no such residues in this entry.