



Full wwPDB X-ray Structure Validation Report ⓘ

May 14, 2014 – 12:20 AM EDT

PDB ID : 4OC5
Title : X-ray structure of of human glutamate carboxypeptidase II (GCPII) in a complex with CHIBzL, a urea-based inhibitor N 2 -{[(S)-carboxy(4-hydroxyphenyl)methyl]carbamoyl}-N 6 -(4-iodobenzoyl)-L-lysine
Authors : Pavlicek, J.; Ptacek, J.; Cerny, J.; Byun, Y.; Skultetyova, L.; Pomper, M.; Lubkowski, J.; Barinka, C.
Deposited on : 2014-01-08
Resolution : 1.70 Å(reported)

This is a full wwPDB validation report for a publicly released PDB entry.
We welcome your comments at validation@mail.wwpdb.org
A user guide is available at <http://wwpdb.org/ValidationPDFNotes.html>

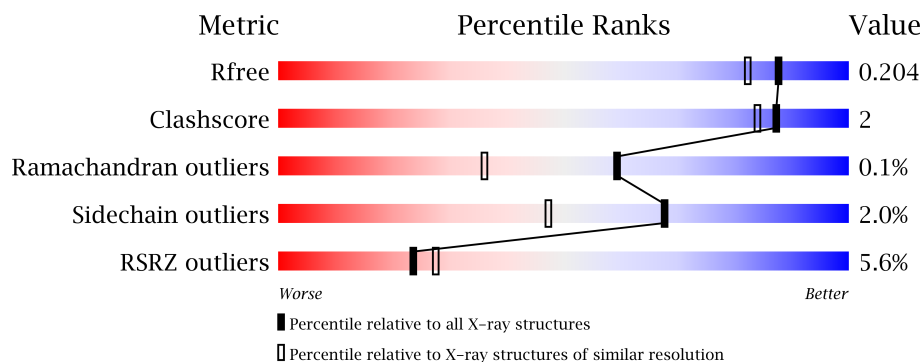
The following versions of software and data (see [references](#)) were used in the production of this report:

MolProbity : 4.02b-467
Mogul : 1.16 November 2013
Xtriage (Phenix) : dev-1439
EDS : stable22978
Percentile statistics : 21963
Refmac : 5.8.0049
CCP4 : 6.3.0 (Settle)
Ideal geometry (proteins) : Engh & Huber (2001)
Ideal geometry (DNA, RNA) : Parkinson et. al. (1996)
Validation Pipeline (wwPDB-VP) : stable22978

1 Overall quality at a glance

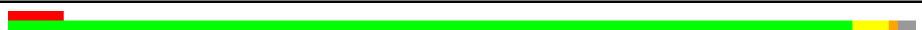
The reported resolution of this entry is 1.70 Å.

Percentile scores (ranging between 0-100) for global validation metrics of the entry are shown in the following graphic. The table shows the number of entries on which the scores are based.



Metric	Whole archive (#Entries)	Similar resolution (#Entries, resolution range(Å))
R_{free}	66092	2456 (1.70-1.70)
Clashscore	79885	2929 (1.70-1.70)
Ramachandran outliers	78287	2878 (1.70-1.70)
Sidechain outliers	78261	2878 (1.70-1.70)
RSRZ outliers	66119	2456 (1.70-1.70)

The table below summarises the geometric issues observed across the polymeric chains and their fit to the electron density. The red, orange, yellow and green segments on the lower bar indicate the fraction of residues that contain outliers for ≥ 3 , 2, 1 and 0 types of geometric quality criteria. The upper red bar (where present) indicates the fraction of residues that have poor fit to the electron density.

Mol	Chain	Length	Quality of chain
1	A	709	

The following table lists non-polymeric compounds that are outliers for geometric or electron-density-fit criteria:

Mol	Type	Chain	Res	Geometry	Electron density
3	NAG	A	803	-	X
3	NAG	A	806	-	X
3	NAG	A	807	-	X

2 Entry composition

There are 9 unique types of molecules in this entry. The entry contains 6466 atoms, of which 0 are hydrogen and 0 are deuterium.

In the tables below, the ZeroOcc column contains the number of atoms modelled with zero occupancy, the AltConf column contains the number of residues with at least one atom in alternate conformation and the Trace column contains the number of residues modelled with at most 2 atoms.

- Molecule 1 is a protein called Glutamate carboxypeptidase 2.

Mol	Chain	Residues	Atoms					ZeroOcc	AltConf	Trace
1	A	694	Total	C	N	O	S	0	44	0
			5754	3700	962	1069	23			

There are 2 discrepancies between the modelled and reference sequences:

Chain	Residue	Modelled	Actual	Comment	Reference
A	42	ARG	-	EXPRESSION TAG	UNP Q04609
A	43	SER	-	EXPRESSION TAG	UNP Q04609

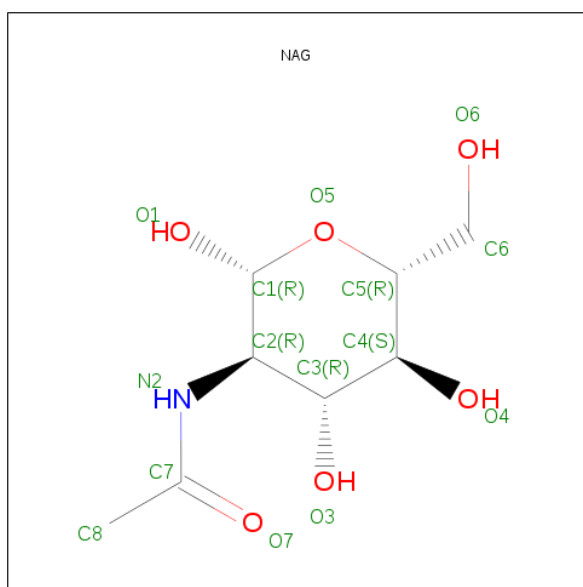
- Molecule 2 is a polymer of unknown type called SUGAR (2-MER).

Mol	Chain	Residues	Atoms				ZeroOcc	AltConf
2	A	2	Total	C	N	O	0	0
			28	16	2	10		
2	A	2	Total	C	N	O	0	0
			28	16	2	10		
2	A	2	Total	C	N	O	0	0
			28	16	2	10		

There are 6 discrepancies between the modelled and reference sequences:

Chain	Residue	Modelled	Actual	Comment	Reference
A	42	ARG	-	EXPRESSION TAG	UNP Q04609
A	43	SER	-	EXPRESSION TAG	UNP Q04609
A	42	ARG	-	EXPRESSION TAG	UNP Q04609
A	43	SER	-	EXPRESSION TAG	UNP Q04609
A	42	ARG	-	EXPRESSION TAG	UNP Q04609
A	43	SER	-	EXPRESSION TAG	UNP Q04609

- Molecule 3 is SUGAR (N-ACETYL-D-GLUCOSAMINE) (three-letter code: NAG) (formula: C₈H₁₅NO₆).



Mol	Chain	Residues	Atoms				ZeroOcc	AltConf
3	A	1	Total	C	N	O	0	0
			14	8	1	5		
3	A	1	Total	C	N	O	0	0
			14	8	1	5		
3	A	1	Total	C	N	O	0	0
			14	8	1	5		

- Molecule 4 is a polymer of unknown type called SUGAR (4-MER).

Mol	Chain	Residues	Atoms				ZeroOcc	AltConf
4	A	4	Total	C	N	O	0	0
			50	28	2	20		

There are 2 discrepancies between the modelled and reference sequences:

Chain	Residue	Modelled	Actual	Comment	Reference
A	42	ARG	-	EXPRESSION TAG	UNP Q04609
A	43	SER	-	EXPRESSION TAG	UNP Q04609

- Molecule 5 is ZINC ION (three-letter code: ZN) (formula: Zn).

Mol	Chain	Residues	Atoms		ZeroOcc	AltConf
5	A	2	Total	Zn	0	0
			2	2		

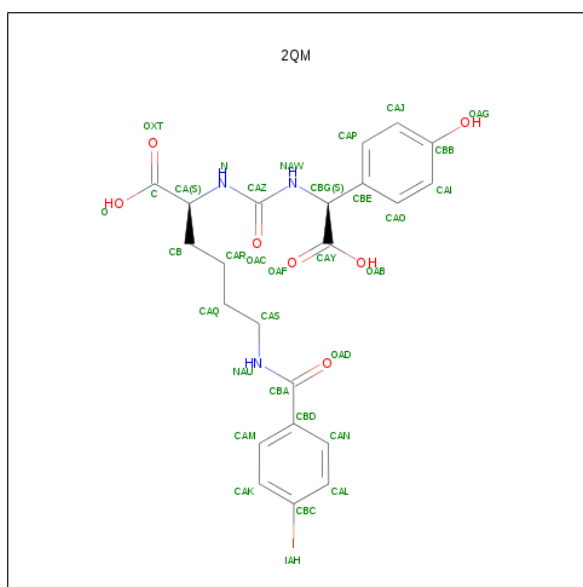
- Molecule 6 is CALCIUM ION (three-letter code: CA) (formula: Ca).

Mol	Chain	Residues	Atoms	ZeroOcc	AltConf
6	A	1	Total Ca 1 1	0	0

- Molecule 7 is CHLORIDE ION (three-letter code: CL) (formula: Cl).

Mol	Chain	Residues	Atoms	ZeroOcc	AltConf
7	A	1	Total Cl 1 1	0	0

- Molecule 8 is N 2 -{[(S)-CARBOXY(4-HYDROXYPHENYL)METHYL]CARBAMOYL}-N 6 -(4-IODOBENZOYL)-L-LYSINE (three-letter code: 2QM) (formula: C₂₂H₂₄IN₃O₇).



Mol	Chain	Residues	Atoms	ZeroOcc	AltConf
8	A	1	Total C I N O 33 22 1 3 7	0	0

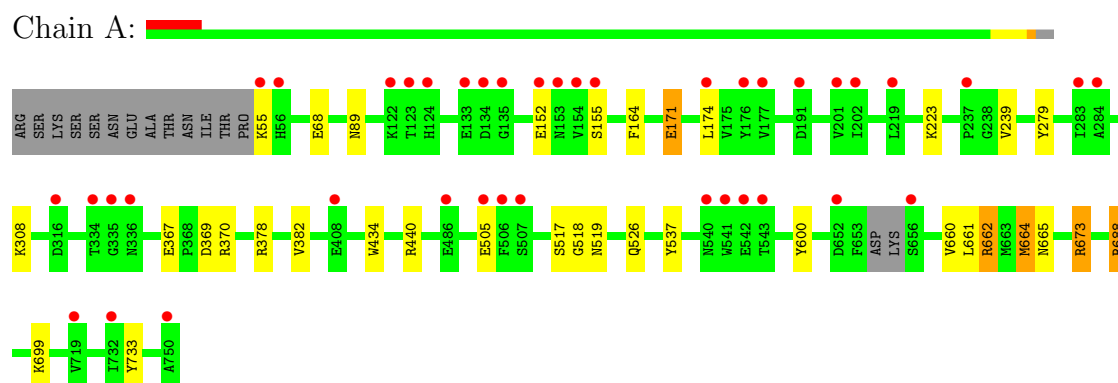
- Molecule 9 is water.

Mol	Chain	Residues	Atoms	ZeroOcc	AltConf
9	A	499	Total O 499 499	0	0

3 Residue-property plots

These plots are drawn for all protein, RNA and DNA chains in the entry. The first graphic for a chain summarises the proportions of errors displayed in the second graphic. The second graphic shows the sequence view annotated by issues in geometry and electron density. Residues are color-coded according to the number of geometric quality criteria for which they contain at least one outlier: green = 0, yellow = 1, orange = 2 and red = 3 or more. A red dot above a residue indicates a poor fit to the electron density ($RSRZ > 2$). Stretches of 2 or more consecutive residues without any outlier are shown as a green connector. Residues present in the sample, but not in the model, are shown in grey.

● Molecule 1: Glutamate carboxypeptidase 2



4 Data and refinement statistics

Property	Value	Source
Space group	I 2 2 2	Depositor
Cell constants a, b, c, α , β , γ	101.58Å 130.45Å 159.07Å 90.00° 90.00° 90.00°	Depositor
Resolution (Å)	20.00 – 1.70 20.00 – 1.70	Depositor EDS
% Data completeness (in resolution range)	97.7 (20.00-1.70) 97.7 (20.00-1.70)	Depositor EDS
R_{merge}	(Not available)	Depositor
R_{sym}	(Not available)	Depositor
$\langle I/\sigma(I) \rangle$ ¹	3.47 (at 1.70Å)	Xtriage
Refinement program	REFMAC 5.5.0109	Depositor
R, R_{free}	0.169 , 0.204 0.170 , 0.204	Depositor DCC
R_{free} test set	1139 reflections (1.02%)	DCC
Wilson B-factor (Å ²)	25.3	Xtriage
Anisotropy	0.067	Xtriage
Bulk solvent k_{sol} (e/Å ³), B_{sol} (Å ²)	0.37 , 47.2	EDS
Estimated twinning fraction	No twinning to report.	Xtriage
L-test for twinning	$\langle L \rangle = 0.49$, $\langle L^2 \rangle = 0.33$	Xtriage
Outliers	0 of 113015 reflections	Xtriage
F_o, F_c correlation	0.97	EDS
Total number of atoms	6466	wwPDB-VP
Average B, all atoms (Å ²)	31.0	wwPDB-VP

Xtriage's analysis on translational NCS is as follows: *The largest off-origin peak in the Patterson function is 4.06% of the height of the origin peak. No significant pseudotranslation is detected.*

¹Intensities estimated from amplitudes.

5 Model quality ⓘ

5.1 Standard geometry ⓘ

Bond lengths and bond angles in the following residue types are not validated in this section: ZN, BMA, NAG, CL, CA, 2QM, MAN

The Z score for a bond length (or angle) is the number of standard deviations the observed value is removed from the expected value. A bond length (or angle) with $|Z| > 5$ is considered an outlier worth inspection. RMSZ is the root-mean-square of all Z scores of the bond lengths (or angles).

Mol	Chain	Bond lengths		Bond angles	
		RMSZ	$\# Z > 5$	RMSZ	$\# Z > 5$
1	A	0.95	2/6022 (0.0%)	0.86	9/8154 (0.1%)

All (2) bond length outliers are listed below:

Mol	Chain	Res	Type	Atoms	Z	Observed(Å)	Ideal(Å)
1	A	434	TRP	CE3-CZ3	5.36	1.47	1.38
1	A	164	PHE	CE2-CZ	5.26	1.47	1.37

All (9) bond angle outliers are listed below:

Mol	Chain	Res	Type	Atoms	Z	Observed(°)	Ideal(°)
1	A	688[A]	ARG	NE-CZ-NH2	-6.63	116.99	120.30
1	A	688[B]	ARG	NE-CZ-NH2	-6.63	116.99	120.30
1	A	673	ARG	NE-CZ-NH1	6.26	123.43	120.30
1	A	673	ARG	NE-CZ-NH2	-6.15	117.22	120.30
1	A	174[A]	LEU	CA-CB-CG	5.75	128.52	115.30
1	A	174[B]	LEU	CA-CB-CG	5.75	128.52	115.30
1	A	664	MET	CG-SD-CE	-5.25	91.79	100.20
1	A	370	ARG	NE-CZ-NH1	5.24	122.92	120.30
1	A	440	ARG	NE-CZ-NH2	-5.04	117.78	120.30

There are no chirality outliers.

There are no planarity outliers.

5.2 Close contacts ⓘ

In the following table, the Non-H and H(model) columns list the number of non-hydrogen atoms and hydrogen atoms in the chain respectively. The H(added) column lists the number of hydrogens added by MolProbity. The Clashes column lists the number of clashes within the asymmetric unit,

and the number in parentheses is this value normalized per 1000 atoms of the molecule in the chain. The Symm-Clashes column gives symmetry related clashes, in the same way as for the Clashes column.

Mol	Chain	Non-H	H(model)	H(added)	Clashes	Symm-Clashes
1	A	5754	0	0	14	0
2	A	84	0	75	1	0
3	A	42	0	39	0	0
4	A	50	0	43	0	0
5	A	2	0	0	0	0
6	A	1	0	0	0	0
7	A	1	0	0	0	0
8	A	33	0	0	0	0
9	A	499	0	0	6	2
All	All	6466	0	157	15	2

Clashscore is defined as the number of clashes calculated for the entry per 1000 atoms (including hydrogens) of the entry. The overall clashscore for this entry is 2.

All (15) close contacts within the same asymmetric unit are listed below.

Atom-1	Atom-2	Distance(Å)	Clash(Å)
1:A:660[A]:VAL:O	1:A:664:MET:CG	2.33	0.76
1:A:688[B]:ARG:NH1	9:A:970:HOH:O	2.32	0.63
1:A:308:LYS:NZ	9:A:1241:HOH:O	2.35	0.60
1:A:526[A]:GLN:NE2	9:A:1374:HOH:O	2.37	0.57
1:A:369:ASP:OD2	1:A:662[B]:ARG:NH2	2.43	0.52
1:A:171:GLU:O	1:A:223:LYS:NZ	2.44	0.50
1:A:733:TYR:CE2	9:A:1244:HOH:O	2.55	0.50
1:A:89[B]:ASN:ND2	1:A:378:ARG:NH2	2.64	0.46
1:A:699:LYS:NZ	9:A:1160:HOH:O	2.51	0.43
1:A:367:GLU:OE2	1:A:662[A]:ARG:NH1	2.53	0.41
1:A:517:SER:OG	1:A:518:GLY:N	2.52	0.41
2:A:802:NAG:H81	9:A:1144:HOH:O	2.21	0.41
1:A:661[A]:LEU:O	1:A:665:ASN:N	2.53	0.40

All (2) symmetry-related close contacts are listed below. The label for Atom-2 includes the symmetry operator and encoded unit-cell translations to be applied.

Atom-1	Atom-2	Distance(Å)	Clash(Å)
9:A:1115:HOH:O	9:A:1364:HOH:O[2_565]	1.97	0.23
9:A:1255:HOH:O	9:A:1399:HOH:O[2_565]	2.10	0.10

5.3 Torsion angles

5.3.1 Protein backbone ⓘ

In the following table, the Percentiles column shows the percent Ramachandran outliers of the chain as a percentile score with respect to all X-ray entries followed by that with respect to entries of similar resolution. The Analysed column shows the number of residues for which the backbone conformation was analysed, and the total number of residues.

Mol	Chain	Analysed	Favoured	Allowed	Outliers	Percentiles
1	A	731/709 (103%)	714 (98%)	16 (2%)	1 (0%)	59 36

All (1) Ramachandran outliers are listed below:

Mol	Chain	Res	Type
1	A	382	VAL

5.3.2 Protein sidechains ⓘ

In the following table, the Percentiles column shows the percent sidechain outliers of the chain as a percentile score with respect to all X-ray entries followed by that with respect to entries of similar resolution. The Analysed column shows the number of residues for which the sidechain conformation was analysed, and the total number of residues.

Mol	Chain	Analysed	Rotameric	Outliers	Percentiles
1	A	633/605 (105%)	618 (98%)	15 (2%)	61 39

All (15) residues with a non-rotameric sidechain are listed below:

Mol	Chain	Res	Type
1	A	55	LYS
1	A	68[A]	GLU
1	A	68[B]	GLU
1	A	152	GLU
1	A	155	SER
1	A	171	GLU
1	A	239[A]	VAL
1	A	239[B]	VAL
1	A	505	GLU
1	A	519	ASN
1	A	537	TYR
1	A	600	TYR
1	A	662[A]	ARG

Continued on next page...

Continued from previous page...

Mol	Chain	Res	Type
1	A	662[B]	ARG
1	A	673	ARG

Some sidechains can be flipped to improve hydrogen bonding and reduce clashes. There are no such sidechains identified.

5.3.3 RNA ⓘ

There are no RNA chains in this entry.

5.4 Non-standard residues in protein, DNA, RNA chains ⓘ

There are no non-standard protein/DNA/RNA residues in this entry.

5.5 Carbohydrates ⓘ

10 carbohydrates are modelled in this entry.

In the following table, the Counts columns list the number of bonds (or angles) for which Mogul statistics could be retrieved, the number of bonds (or angles) that are observed in the model and the number of bonds (or angles) that are defined in the chemical component dictionary. The Link column lists molecule types, if any, to which the group is linked. The Z score for a bond length (or angle) is the number of standard deviations the observed value is removed from the expected value. A bond length (or angle) with $|Z| > 2$ is considered an outlier worth inspection. RMSZ is the root-mean-square of all Z scores of the bond lengths (or angles).

Mol	Type	Chain	Res	Link	Bond lengths			Bond angles		
					Counts	RMSZ	# Z > 2	Counts	RMSZ	# Z > 2
2	NAG	A	801	1,2	12,14,15	0.76	1 (8%)	15,19,21	1.49	3 (20%)
2	NAG	A	802	2	12,14,15	0.78	0	15,19,21	1.34	2 (13%)
2	NAG	A	804	1,2	12,14,15	0.89	1 (8%)	15,19,21	1.17	2 (13%)
2	NAG	A	805	2	12,14,15	0.46	0	15,19,21	1.66	1 (6%)
2	NAG	A	808	1,2	12,14,15	1.10	1 (8%)	15,19,21	1.80	3 (20%)
2	NAG	A	809	2	12,14,15	0.69	0	15,19,21	1.14	2 (13%)
4	NAG	A	810	1,4	12,14,15	0.71	0	15,19,21	1.25	1 (6%)
4	NAG	A	811	4	12,14,15	0.86	1 (8%)	15,19,21	1.78	4 (26%)
4	BMA	A	812	4	10,11,12	0.54	0	11,15,17	1.23	2 (18%)
4	MAN	A	813	4	10,11,12	0.78	0	11,15,17	1.68	1 (9%)

In the following table, the Chirals column lists the number of chiral outliers, the number of chiral centers analysed, the number of these observed in the model and the number defined in the chemical component dictionary. Similar counts are reported in the Torsion and Rings columns. '-' means no outliers of that kind were identified.

Mol	Type	Chain	Res	Link	Chirals	Torsions	Rings
2	NAG	A	801	1,2	-	0/6/23/26	0/1/1/1
2	NAG	A	802	2	-	0/6/23/26	0/1/1/1
2	NAG	A	804	1,2	-	0/6/23/26	0/1/1/1
2	NAG	A	805	2	-	0/6/23/26	0/1/1/1
2	NAG	A	808	1,2	-	0/6/23/26	0/1/1/1
2	NAG	A	809	2	-	0/6/23/26	0/1/1/1
4	NAG	A	810	1,4	-	0/6/23/26	0/1/1/1
4	NAG	A	811	4	-	0/6/23/26	0/1/1/1
4	BMA	A	812	4	-	0/2/19/22	0/1/1/1
4	MAN	A	813	4	-	0/2/19/22	0/1/1/1

All (4) bond length outliers are listed below:

Mol	Chain	Res	Type	Atoms	Z	Observed(Å)	Ideal(Å)
4	A	811	NAG	O5-C5	-2.37	1.41	1.45
2	A	808	NAG	O7-C7	2.35	1.28	1.23
2	A	804	NAG	O5-C5	-2.23	1.42	1.45
2	A	801	NAG	O5-C5	-2.04	1.42	1.45

All (21) bond angle outliers are listed below:

Mol	Chain	Res	Type	Atoms	Z	Observed(°)	Ideal(°)
2	A	805	NAG	O5-C5-C6	5.15	112.38	106.98
4	A	813	MAN	O5-C5-C6	4.61	111.82	106.98
2	A	808	NAG	O5-C5-C4	-4.52	104.92	110.65
2	A	801	NAG	O5-C5-C6	4.14	111.32	106.98
4	A	811	NAG	O5-C5-C4	-3.62	106.06	110.65
2	A	802	NAG	C3-C2-N2	-3.38	106.55	111.62
2	A	808	NAG	O4-C4-C3	-2.90	103.87	110.36
4	A	811	NAG	C3-C4-C5	-2.90	104.96	110.17
2	A	808	NAG	C3-C2-N2	-2.87	107.32	111.62
2	A	804	NAG	C3-C2-N2	-2.72	107.55	111.62
4	A	812	BMA	O5-C5-C4	-2.67	107.26	110.65
2	A	802	NAG	C2-N2-C7	2.40	126.30	123.39
2	A	801	NAG	O3-C3-C4	-2.38	105.05	110.36
2	A	809	NAG	C8-C7-N2	2.27	120.41	116.12
2	A	809	NAG	O7-C7-C8	-2.23	117.77	122.04
2	A	804	NAG	O5-C5-C6	2.20	109.29	106.98

Continued on next page...

Continued from previous page...

Mol	Chain	Res	Type	Atoms	Z	Observed(°)	Ideal(°)
4	A	812	BMA	O3-C3-C2	-2.19	105.76	109.74
4	A	810	NAG	C6-C5-C4	-2.18	107.72	113.04
4	A	811	NAG	C8-C7-N2	2.10	120.08	116.12
2	A	801	NAG	C2-N2-C7	-2.06	120.90	123.39
4	A	811	NAG	O4-C4-C3	2.00	114.83	110.36

There are no chirality outliers.

There are no torsion outliers.

There are no ring outliers.

5.6 Ligand geometry ⓘ

Of 8 ligands modelled in this entry, 4 are monoatomic - leaving 4 for Mogul analysis.

In the following table, the Counts columns list the number of bonds (or angles) for which Mogul statistics could be retrieved, the number of bonds (or angles) that are observed in the model and the number of bonds (or angles) that are defined in the chemical component dictionary. The Link column lists molecule types, if any, to which the group is linked. The Z score for a bond length (or angle) is the number of standard deviations the observed value is removed from the expected value. A bond length (or angle) with $|Z| > 2$ is considered an outlier worth inspection. RMSZ is the root-mean-square of all Z scores of the bond lengths (or angles).

Mol	Type	Chain	Res	Link	Bond lengths			Bond angles		
					Counts	RMSZ	$\# Z > 2$	Counts	RMSZ	$\# Z > 2$
3	NAG	A	803	1	12,14,15	0.78	0	15,19,21	1.62	3 (20%)
3	NAG	A	806	1	12,14,15	0.61	0	15,19,21	1.44	1 (6%)
3	NAG	A	807	1	12,14,15	0.63	0	15,19,21	1.93	3 (20%)
8	2QM	A	818	5	34,34,34	1.33	6 (17%)	45,45,45	1.62	8 (17%)

In the following table, the Chirals column lists the number of chiral outliers, the number of chiral centers analysed, the number of these observed in the model and the number defined in the chemical component dictionary. Similar counts are reported in the Torsion and Rings columns. '-' means no outliers of that kind were identified.

Mol	Type	Chain	Res	Link	Chirals	Torsions	Rings
3	NAG	A	803	1	-	0/6/23/26	0/1/1/1
3	NAG	A	806	1	-	0/6/23/26	0/1/1/1
3	NAG	A	807	1	-	0/6/23/26	0/1/1/1
8	2QM	A	818	5	-	0/32/32/32	0/2/2/2

All (6) bond length outliers are listed below:

Mol	Chain	Res	Type	Atoms	Z	Observed(Å)	Ideal(Å)
8	A	818	2QM	CBD-CBA	3.52	1.57	1.50
8	A	818	2QM	CBC-IAH	3.14	2.18	2.10
8	A	818	2QM	CAL-CAN	2.46	1.43	1.38
8	A	818	2QM	CAK-CAM	2.23	1.42	1.38
8	A	818	2QM	OXT-C	2.02	1.29	1.22
8	A	818	2QM	CBG-CAY	2.00	1.55	1.52

All (15) bond angle outliers are listed below:

Mol	Chain	Res	Type	Atoms	Z	Observed(°)	Ideal(°)
3	A	807	NAG	O5-C5-C6	6.05	113.33	106.98
8	A	818	2QM	CAL-CBC-CAK	-5.14	112.39	120.66
3	A	806	NAG	O5-C5-C6	4.49	111.69	106.98
3	A	803	NAG	O5-C5-C6	4.17	111.36	106.98
8	A	818	2QM	CAM-CAK-CBC	3.19	124.46	119.56
8	A	818	2QM	CAK-CBC-IAH	3.06	124.32	119.69
8	A	818	2QM	CAO-CBE-CBG	-2.85	115.90	120.81
8	A	818	2QM	CAN-CAL-CBC	2.74	123.77	119.56
3	A	803	NAG	O3-C3-C2	-2.70	103.64	109.16
8	A	818	2QM	CAN-CBD-CAM	-2.56	115.08	118.62
8	A	818	2QM	CAP-CAJ-CBB	-2.40	117.06	119.88
8	A	818	2QM	CAL-CBC-IAH	2.37	123.28	119.69
3	A	807	NAG	O7-C7-C8	-2.30	117.63	122.04
3	A	803	NAG	O5-C5-C4	-2.09	108.00	110.65
3	A	807	NAG	C3-C4-C5	-2.05	106.49	110.17

There are no chirality outliers.

There are no torsion outliers.

There are no ring outliers.

5.7 Other polymers ⓘ

There are no such residues in this entry.

5.8 Polymer linkage issues

There are no chain breaks in this entry.

6 Fit of model and data ⓘ

6.1 Protein, DNA and RNA chains ⓘ

In the following table, the column labelled ‘#RSRZ> 2’ contains the number (and percentage) of RSRZ outliers, followed by percent RSRZ outliers for the chain as percentile scores relative to all X-ray entries and entries of similar resolution. The OWAB column contains the minimum, median, 95th percentile and maximum values of the occupancy-weighted average B-factor per residue. The column labelled ‘Q< 0.9’ lists the number of (and percentage) of residues with an average occupancy less than 0.9.

Mol	Chain	Analysed	<RSRZ>	#RSRZ>2		OWAB(Å ²)	Q<0.9
1	A	694/709 (97%)	0.11	40 (5%)	22 26	17, 28, 48, 65	0

All (40) RSRZ outliers are listed below:

Mol	Chain	Res	Type	RSRZ
1	A	152	GLU	6.4
1	A	719	VAL	6.2
1	A	133	GLU	5.5
1	A	543	THR	5.0
1	A	505	GLU	4.6
1	A	237	PRO	4.4
1	A	55	LYS	4.1
1	A	335	GLY	4.1
1	A	506	PHE	4.0
1	A	135	GLY	3.9
1	A	541	TRP	3.9
1	A	134	ASP	3.8
1	A	153	ASN	3.3
1	A	155	SER	3.3
1	A	191	ASP	3.3
1	A	174[A]	LEU	3.2
1	A	219	LEU	3.0
1	A	201[A]	VAL	3.0
1	A	56	HIS	3.0
1	A	336	ASN	2.9
1	A	542	GLU	2.8
1	A	334	THR	2.8
1	A	656[A]	SER	2.5
1	A	316	ASP	2.5
1	A	154	VAL	2.4
1	A	507	SER	2.4
1	A	408	GLU	2.4

Continued on next page...

Continued from previous page...

Mol	Chain	Res	Type	RSRZ
1	A	652	ASP	2.4
1	A	750	ALA	2.3
1	A	177	VAL	2.2
1	A	122	LYS	2.2
1	A	124	HIS	2.2
1	A	202	ILE	2.2
1	A	283[A]	ILE	2.2
1	A	284	ALA	2.1
1	A	540	ASN	2.1
1	A	176	TYR	2.1
1	A	732	ILE	2.1
1	A	123	THR	2.0
1	A	486[A]	GLU	2.0

6.2 Non-standard residues in protein, DNA, RNA chains ⓘ

There are no non-standard protein/DNA/RNA residues in this entry.

6.3 Carbohydrates ⓘ

In the following table, the Atoms column lists the number of modelled atoms in the group and the number defined in the chemical component dictionary. LLDF column lists the quality of electron density of the group with respect to its neighbouring residues in protein, DNA or RNA chains. The B-factors column lists the minimum, median, 95th percentile and maximum values of B factors of atoms in the group. The column labelled 'Q< 0.9' lists the number of atoms with occupancy less than 0.9.

Mol	Type	Chain	Res	Atoms	RSR	LLDF	B-factors(Å ²)	Q<0.9
2	NAG	A	808	14/15	0.13	5.61	31,34,42,44	0
2	NAG	A	802	14/15	0.31	3.63	45,53,57,58	0
2	NAG	A	804	14/15	0.12	3.59	40,44,48,54	0
4	NAG	A	811	14/15	0.28	2.15	39,43,52,52	0
2	NAG	A	809	14/15	0.22	2.03	36,43,49,51	0
4	NAG	A	810	14/15	0.10	1.77	25,29,39,45	0
2	NAG	A	805	14/15	0.32	1.61	60,62,67,69	0
2	NAG	A	801	14/15	0.10	1.56	35,43,48,52	0
4	MAN	A	813	11/12	0.18	0.92	50,52,56,57	0
4	BMA	A	812	11/12	0.14	0.33	42,44,45,47	0

6.4 Ligands ⓘ

In the following table, the Atoms column lists the number of modelled atoms in the group and the number defined in the chemical component dictionary. LLDF column lists the quality of electron density of the group with respect to its neighbouring residues in protein, DNA or RNA chains. The B-factors column lists the minimum, median, 95th percentile and maximum values of B factors of atoms in the group. The column labelled 'Q< 0.9' lists the number of atoms with occupancy less than 0.9.

Mol	Type	Chain	Res	Atoms	RSR	LLDF	B-factors(Å ²)	Q<0.9
3	NAG	A	806	14/15	0.25	5.60	60,68,70,71	0
3	NAG	A	807	14/15	0.15	3.27	33,49,55,59	0
3	NAG	A	803	14/15	0.27	2.30	46,53,56,58	0
8	2QM	A	818	33/33	0.09	0.09	22,29,38,45	0
6	CA	A	816	1/1	0.07	-0.42	18,18,18,18	0
7	CL	A	817	1/1	0.04	-2.54	29,29,29,29	0
5	ZN	A	814	1/1	0.03	-3.37	23,23,23,23	0
5	ZN	A	815	1/1	0.01	-4.20	23,23,23,23	0

6.5 Other polymers ⓘ

There are no such residues in this entry.