



# Full wwPDB X-ray Structure Validation Report ⓘ

Jun 9, 2014 – 09:09 AM EDT

PDB ID : 4OCC  
Title : co-crystal structure of MDM2(17-111) in complex with compound 48  
Authors : Huang, X.  
Deposited on : 2014-01-08  
Resolution : 1.80 Å(reported)

This is a full wwPDB validation report for a publicly released PDB entry.  
We welcome your comments at [validation@mail.wwpdb.org](mailto:validation@mail.wwpdb.org)  
A user guide is available at <http://wwpdb.org/ValidationPDFNotes.html>

---

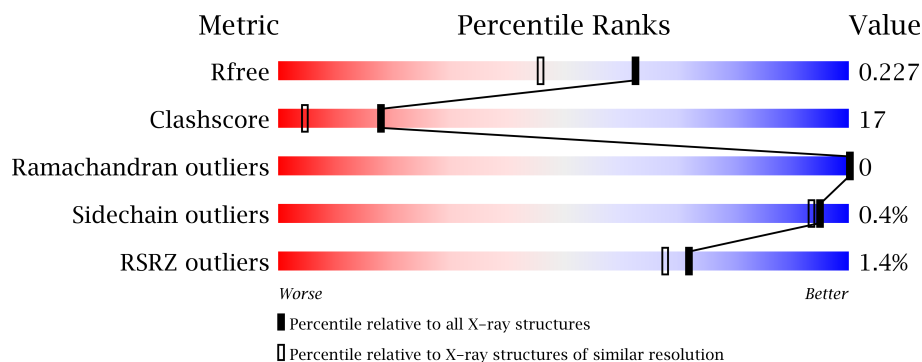
The following versions of software and data (see [references](#)) were used in the production of this report:

MolProbity : 4.02b-467  
Mogul : **FAILED**  
Xtriage (Phenix) : dev-1439  
EDS : stable23161  
Percentile statistics : 21963  
Refmac : 5.8.0049  
CCP4 : 6.3.0 (Settle)  
Ideal geometry (proteins) : Engh & Huber (2001)  
Ideal geometry (DNA, RNA) : Parkinson et. al. (1996)  
Validation Pipeline (wwPDB-VP) : stable23161

# 1 Overall quality at a glance

The reported resolution of this entry is 1.80 Å.

Percentile scores (ranging between 0-100) for global validation metrics of the entry are shown in the following graphic. The table shows the number of entries on which the scores are based.



Metric	Whole archive (#Entries)	Similar resolution (#Entries, resolution range(Å))
$R_{free}$	66092	3513 (1.80-1.80)
Clashscore	79885	4461 (1.80-1.80)
Ramachandran outliers	78287	4404 (1.80-1.80)
Sidechain outliers	78261	4403 (1.80-1.80)
RSRZ outliers	66119	3515 (1.80-1.80)

The table below summarises the geometric issues observed across the polymeric chains and their fit to the electron density. The red, orange, yellow and green segments on the lower bar indicate the fraction of residues that contain outliers for  $\geq 3$ , 2, 1 and 0 types of geometric quality criteria. The upper red bar (where present) indicates the fraction of residues that have poor fit to the electron density.

Mol	Chain	Length	Quality of chain
1	A	96	
1	C	96	
1	E	96	

## 2 Entry composition i

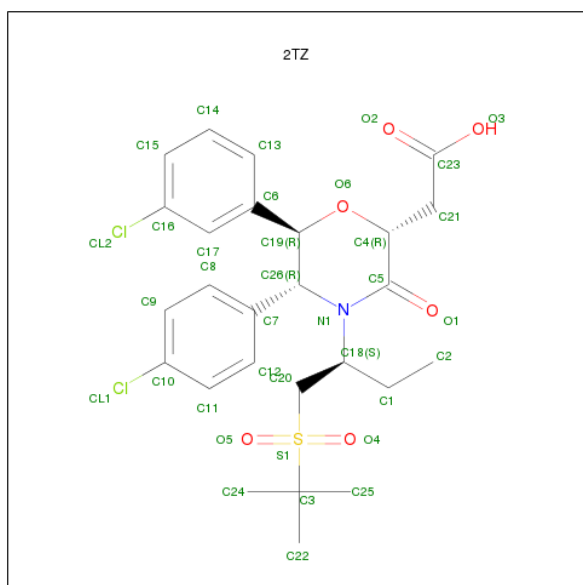
There are 3 unique types of molecules in this entry. The entry contains 2682 atoms, of which 0 are hydrogen and 0 are deuterium.

In the tables below, the ZeroOcc column contains the number of atoms modelled with zero occupancy, the AltConf column contains the number of residues with at least one atom in alternate conformation and the Trace column contains the number of residues modelled with at most 2 atoms.

- Molecule 1 is a protein called E3 ubiquitin-protein ligase Mdm2.

Mol	Chain	Residues	Atoms					ZeroOcc	AltConf	Trace
1	A	93	Total	C	N	O	S	0	0	0
			757	494	124	135	4			
1	C	92	Total	C	N	O	S	0	0	0
			744	487	122	131	4			
1	E	93	Total	C	N	O	S	0	0	0
			749	491	123	131	4			

- Molecule 2 is [(2R,5R,6R)-4-[(2S)-1-(TERT-BUTYLSULFONYL)BUTAN-2-YL]-6-(3-CHLOROPHENYL)-5-(4-CHLOROPHENYL)-3-OXOMORPHOLIN-2-YL]ACETICACID (three-letter code: 2TZ) (formula: C<sub>26</sub>H<sub>31</sub>Cl<sub>2</sub>NO<sub>6</sub>S).



Mol	Chain	Residues	Atoms					ZeroOcc	AltConf
2	A	1	Total	C	Cl	N	O	0	0
			36	26	2	1	6		
2	C	1	Total	C	Cl	N	O	0	0
			36	26	2	1	6		

*Continued on next page...*

*Continued from previous page...*

Mol	Chain	Residues	Atoms						ZeroOcc	AltConf
2	E	1	Total	C	Cl	N	O	S	0	0
			36	26	2	1	6	1		

- Molecule 3 is water.

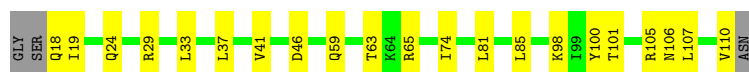
Mol	Chain	Residues	Atoms		ZeroOcc	AltConf
3	A	101	Total	O	0	0
			101	101		
3	C	124	Total	O	0	0
			124	124		
3	E	99	Total	O	0	0
			99	99		

### 3 Residue-property plots

These plots are drawn for all protein, RNA and DNA chains in the entry. The first graphic for a chain summarises the proportions of errors displayed in the second graphic. The second graphic shows the sequence view annotated by issues in geometry and electron density. Residues are color-coded according to the number of geometric quality criteria for which they contain at least one outlier: green = 0, yellow = 1, orange = 2 and red = 3 or more. A red dot above a residue indicates a poor fit to the electron density ( $RSRZ > 2$ ). Stretches of 2 or more consecutive residues without any outlier are shown as a green connector. Residues present in the sample, but not in the model, are shown in grey.

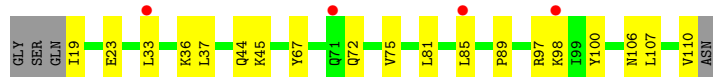
- Molecule 1: E3 ubiquitin-protein ligase Mdm2

Chain A: 



- Molecule 1: E3 ubiquitin-protein ligase Mdm2

Chain C: 



- Molecule 1: E3 ubiquitin-protein ligase Mdm2

Chain E: 



## 4 Data and refinement statistics

Property	Value	Source
Space group	C 2 2 21	Depositor
Cell constants a, b, c, $\alpha$ , $\beta$ , $\gamma$	56.58Å 98.78Å 106.82Å 90.00° 90.00° 90.00°	Depositor
Resolution (Å)	50.00 – 1.80 49.39 – 1.76	Depositor EDS
% Data completeness (in resolution range)	(Not available) (50.00-1.80) 98.3 (49.39-1.76)	Depositor EDS
$R_{merge}$	0.10	Depositor
$R_{sym}$	(Not available)	Depositor
$\langle I/\sigma(I) \rangle$ <sup>1</sup>	3.63 (at 1.76Å)	Xtriage
Refinement program	CNS	Depositor
R, $R_{free}$	0.206 , 0.216 0.225 , 0.227	Depositor DCC
$R_{free}$ test set	1417 reflections (5.05%)	DCC
Wilson B-factor (Å <sup>2</sup> )	19.0	Xtriage
Anisotropy	0.108	Xtriage
Bulk solvent $k_{sol}$ (e/Å <sup>3</sup> ), $B_{sol}$ (Å <sup>2</sup> )	0.35 , 33.7	EDS
Estimated twinning fraction	0.076 for 1/2*h-1/2*k,-3/2*h-1/2*k,-l 0.067 for 1/2*h+1/2*k,3/2*h-1/2*k,-l	Xtriage
L-test for twinning	$\langle  L  \rangle = 0.47$ , $\langle L^2 \rangle = 0.30$	Xtriage
Outliers	0 of 29745 reflections	Xtriage
$F_o, F_c$ correlation	0.94	EDS
Total number of atoms	2682	wwPDB-VP
Average B, all atoms (Å <sup>2</sup> )	20.0	wwPDB-VP

Xtriage's analysis on translational NCS is as follows: *The largest off-origin peak in the Patterson function is 5.17% of the height of the origin peak. No significant pseudotranslation is detected.*

<sup>1</sup>Intensities estimated from amplitudes.

## 5 Model quality

### 5.1 Standard geometry

Bond lengths and bond angles in the following residue types are not validated in this section: 2TZ

The Z score for a bond length (or angle) is the number of standard deviations the observed value is removed from the expected value. A bond length (or angle) with  $|Z| > 5$  is considered an outlier worth inspection. RMSZ is the root-mean-square of all Z scores of the bond lengths (or angles).

Mol	Chain	Bond lengths		Bond angles	
		RMSZ	$\# Z  > 5$	RMSZ	$\# Z  > 5$
1	A	0.41	0/772	0.70	0/1043
1	C	0.38	0/759	0.66	0/1026
1	E	0.66	4/764 (0.5%)	0.72	0/1032
All	All	0.50	4/2295 (0.2%)	0.69	0/3101

All (4) bond length outliers are listed below:

Mol	Chain	Res	Type	Atoms	Z	Observed(Å)	Ideal(Å)
1	E	95	GLU	CD-OE2	-7.54	1.17	1.25
1	E	95	GLU	CB-CG	-7.47	1.38	1.52
1	E	95	GLU	CD-OE1	7.30	1.33	1.25
1	E	95	GLU	CG-CD	-5.28	1.44	1.51

There are no bond angle outliers.

There are no chirality outliers.

There are no planarity outliers.

### 5.2 Close contacts

In the following table, the Non-H and H(model) columns list the number of non-hydrogen atoms and hydrogen atoms in the chain respectively. The H(added) column lists the number of hydrogens added by MolProbity. The Clashes column lists the number of clashes within the asymmetric unit, and the number in parentheses is this value normalized per 1000 atoms of the molecule in the chain. The Symm-Clashes column gives symmetry related clashes, in the same way as for the Clashes column.

Mol	Chain	Non-H	H(model)	H(added)	Clashes	Symm-Clashes
1	A	757	0	782	23	0
1	C	744	0	770	34	0

*Continued on next page...*

*Continued from previous page...*

Mol	Chain	Non-H	H(model)	H(added)	Clashes	Symm-Clashes
1	E	749	0	777	24	0
2	A	36	0	0	0	0
2	C	36	0	0	0	0
2	E	36	0	0	0	0
3	A	101	0	0	11	3
3	C	124	0	0	10	0
3	E	99	0	0	7	1
All	All	2682	0	2329	80	3

Clashscore is defined as the number of clashes calculated for the entry per 1000 atoms (including hydrogens) of the entry. The overall clashscore for this entry is 17.

All (80) close contacts within the same asymmetric unit are listed below.

Atom-1	Atom-2	Distance(Å)	Clash(Å)
1:A:46:ASP:HB2	3:A:364:HOH:O	1.44	1.13
1:C:98:LYS:HG3	3:C:402:HOH:O	1.52	1.09
1:A:33:LEU:HD11	1:A:81:LEU:HD11	1.37	1.05
1:A:29:ARG:HD2	3:A:367:HOH:O	1.58	1.04
1:C:36:LYS:HZ1	1:C:81:LEU:CD2	1.72	1.03
1:C:36:LYS:HZ1	1:C:81:LEU:HD21	1.23	0.99
1:C:33:LEU:HD11	1:C:81:LEU:HD21	1.46	0.98
1:C:33:LEU:HD21	1:C:81:LEU:HD11	1.48	0.94
1:A:110:VAL:O	3:A:354:HOH:O	1.86	0.93
1:A:18:GLN:CB	3:A:330:HOH:O	2.21	0.89
1:A:29:ARG:CD	3:A:367:HOH:O	2.20	0.86
1:E:29:ARG:HG3	1:E:47:THR:HG22	1.58	0.85
1:C:97:ARG:HD2	3:C:387:HOH:O	1.81	0.81
1:E:95:GLU:HG2	3:E:366:HOH:O	1.81	0.80
3:A:358:HOH:O	1:C:44:GLN:HB3	1.81	0.79
1:A:33:LEU:HD11	1:A:81:LEU:CD1	2.14	0.75
1:C:33:LEU:CD1	1:C:81:LEU:HD21	2.19	0.73
1:C:36:LYS:NZ	1:C:81:LEU:CD2	2.51	0.72
1:E:36:LYS:HZ3	1:E:81:LEU:HD22	1.55	0.72
1:C:36:LYS:NZ	1:C:81:LEU:HD21	2.02	0.71
1:C:110:VAL:C	3:C:359:HOH:O	2.27	0.71
1:C:23:GLU:OE2	3:C:393:HOH:O	2.08	0.70
1:A:33:LEU:CD1	1:A:81:LEU:HD11	2.18	0.69
1:C:33:LEU:HD11	1:C:81:LEU:HD11	1.75	0.68
1:C:33:LEU:CD2	1:C:81:LEU:HD11	2.25	0.67
1:C:33:LEU:HD11	1:C:81:LEU:CD2	2.21	0.67
1:A:33:LEU:HD11	1:A:81:LEU:HD21	1.77	0.66
1:C:23:GLU:HG3	1:C:100:TYR:CE1	2.32	0.64

*Continued on next page...*



*Continued from previous page...*

Atom-1	Atom-2	Distance(Å)	Clash(Å)
1:A:24:GLN:OE1	3:A:395:HOH:O	2.15	0.60
1:E:36:LYS:NZ	1:E:81:LEU:HD22	2.16	0.60
1:E:36:LYS:NZ	1:E:81:LEU:CD2	2.65	0.59
1:E:18:GLN:N	3:E:324:HOH:O	2.37	0.58
1:C:19:ILE:N	3:C:373:HOH:O	2.36	0.58
1:E:95:GLU:CG	3:E:366:HOH:O	2.45	0.58
1:A:18:GLN:N	3:A:388:HOH:O	2.37	0.57
1:A:19:ILE:HD13	1:A:100:TYR:CE2	2.40	0.56
1:E:35:LEU:HG	1:E:39:LYS:HE2	1.88	0.55
1:A:37:LEU:C	1:A:37:LEU:HD23	2.28	0.55
1:C:72:GLN:CB	3:C:381:HOH:O	2.55	0.54
1:A:59:GLN:O	1:A:63:THR:HG23	2.06	0.54
1:C:33:LEU:HD11	1:C:81:LEU:CD1	2.38	0.53
1:C:37:LEU:HD22	1:C:85:LEU:CD1	2.39	0.53
1:A:33:LEU:CD1	1:A:81:LEU:HD21	2.38	0.53
1:E:95:GLU:OE1	3:E:341:HOH:O	2.19	0.52
1:A:74:ILE:HD12	3:A:329:HOH:O	2.08	0.52
1:E:37:LEU:HD23	1:E:37:LEU:C	2.30	0.52
1:C:85:LEU:HD23	1:C:106:ASN:ND2	2.25	0.52
1:C:33:LEU:CD2	1:C:85:LEU:HG	2.41	0.51
1:A:85:LEU:HD23	1:A:106:ASN:ND2	2.26	0.50
1:A:98:LYS:HG3	3:A:304:HOH:O	2.11	0.50
3:A:306:HOH:O	1:C:45:LYS:HB3	2.11	0.50
1:E:43:ALA:HB1	1:E:48:TYR:OH	2.11	0.50
1:C:67:TYR:HB2	1:C:75:VAL:HG22	1.94	0.50
1:E:18:GLN:HA	3:E:324:HOH:O	2.12	0.50
1:C:85:LEU:CD2	1:C:106:ASN:ND2	2.74	0.50
1:C:33:LEU:HD21	1:C:81:LEU:CD1	2.30	0.50
1:A:33:LEU:HD11	1:A:81:LEU:CD2	2.41	0.49
1:E:95:GLU:OE1	1:E:98:LYS:HD2	2.12	0.48
1:E:36:LYS:CE	1:E:81:LEU:HD21	2.43	0.48
1:C:89:PRO:HB2	3:C:412:HOH:O	2.14	0.46
1:C:98:LYS:CE	3:C:379:HOH:O	2.63	0.46
1:E:105:ARG:NH2	3:E:393:HOH:O	2.49	0.46
1:E:68:ASP:OD1	1:E:70:LYS:HB2	2.15	0.46
1:E:39:LYS:HA	1:E:43:ALA:O	2.15	0.46
1:C:33:LEU:CD1	1:C:81:LEU:HD11	2.44	0.45
1:C:36:LYS:HB3	1:C:36:LYS:HZ2	1.81	0.45
1:E:33:LEU:HB3	1:E:85:LEU:HD21	1.98	0.45
1:C:98:LYS:CG	3:C:402:HOH:O	2.33	0.45
1:A:41:VAL:HA	1:E:109:VAL:HG21	1.99	0.45
1:C:98:LYS:NZ	3:C:379:HOH:O	2.39	0.44

*Continued on next page...*

Continued from previous page...

Atom-1	Atom-2	Distance(Å)	Clash(Å)
1:E:107:LEU:C	1:E:107:LEU:HD12	2.38	0.44
1:E:34:LEU:O	1:E:38:LEU:HG	2.18	0.43
1:E:72:GLN:O	1:E:73:HIS:HB2	2.19	0.43
1:A:107:LEU:C	1:A:107:LEU:HD12	2.39	0.43
1:C:107:LEU:C	1:C:107:LEU:HD12	2.40	0.43
1:E:18:GLN:CA	3:E:324:HOH:O	2.66	0.43
1:E:45:LYS:HE3	1:E:48:TYR:CD2	2.54	0.42
1:A:101:THR:O	1:A:105:ARG:HG2	2.19	0.42
1:C:81:LEU:O	1:C:81:LEU:HD12	2.20	0.41
1:A:110:VAL:HG12	1:A:110:VAL:O	2.21	0.41

All (3) symmetry-related close contacts are listed below. The label for Atom-2 includes the symmetry operator and encoded unit-cell translations to be applied.

Atom-1	Atom-2	Distance(Å)	Clash(Å)
3:A:378:HOH:O	3:E:377:HOH:O[7_454]	1.89	0.31
3:A:307:HOH:O	3:A:319:HOH:O[3_454]	1.98	0.22
3:A:319:HOH:O	3:A:319:HOH:O[3_454]	2.08	0.12

## 5.3 Torsion angles

### 5.3.1 Protein backbone ⓘ

In the following table, the Percentiles column shows the percent Ramachandran outliers of the chain as a percentile score with respect to all X-ray entries followed by that with respect to entries of similar resolution. The Analysed column shows the number of residues for which the backbone conformation was analysed, and the total number of residues.

Mol	Chain	Analysed	Favoured	Allowed	Outliers	Percentiles	
1	A	91/96 (95%)	86 (94%)	5 (6%)	0	100	100
1	C	90/96 (94%)	87 (97%)	3 (3%)	0	100	100
1	E	91/96 (95%)	90 (99%)	1 (1%)	0	100	100
All	All	272/288 (94%)	263 (97%)	9 (3%)	0	100	100

There are no Ramachandran outliers to report.

### 5.3.2 Protein sidechains ⓘ

In the following table, the Percentiles column shows the percent sidechain outliers of the chain as a percentile score with respect to all X-ray entries followed by that with respect to entries of

similar resolution. The Analysed column shows the number of residues for which the sidechain conformation was analysed, and the total number of residues.

Mol	Chain	Analysed	Rotameric	Outliers	Percentiles	
1	A	85/89 (96%)	84 (99%)	1 (1%)	82	74
1	C	83/89 (93%)	83 (100%)	0	100	100
1	E	83/89 (93%)	83 (100%)	0	100	100
All	All	251/267 (94%)	250 (100%)	1 (0%)	95	93

All (1) residues with a non-rotameric sidechain are listed below:

Mol	Chain	Res	Type
1	A	65	ARG

Some sidechains can be flipped to improve hydrogen bonding and reduce clashes. All (7) such sidechains are listed below:

Mol	Chain	Res	Type
1	A	73	HIS
1	A	106	ASN
1	C	24	GLN
1	C	71	GLN
1	C	106	ASN
1	E	24	GLN
1	E	106	ASN

### 5.3.3 RNA ⓘ

There are no RNA chains in this entry.

## 5.4 Non-standard residues in protein, DNA, RNA chains ⓘ

Mogul failed to run properly - this section will therefore be empty.

## 5.5 Carbohydrates ⓘ

Mogul failed to run properly - this section will therefore be empty.

## 5.6 Ligand geometry ⓘ

Mogul failed to run properly - this section will therefore be empty.

## 5.7 Other polymers ⓘ

Mogul failed to run properly - this section will therefore be empty.

## 5.8 Polymer linkage issues

There are no chain breaks in this entry.

## 6 Fit of model and data ⓘ

### 6.1 Protein, DNA and RNA chains ⓘ

In the following table, the column labelled ‘#RSRZ> 2’ contains the number (and percentage) of RSRZ outliers, followed by percent RSRZ outliers for the chain as percentile scores relative to all X-ray entries and entries of similar resolution. The OWAB column contains the minimum, median, 95<sup>th</sup> percentile and maximum values of the occupancy-weighted average B-factor per residue. The column labelled ‘Q< 0.9’ lists the number of (and percentage) of residues with an average occupancy less than 0.9.

Mol	Chain	Analysed	<RSRZ>	#RSRZ>2	OWAB(Å <sup>2</sup> )	Q<0.9
1	A	93/96 (96%)	-0.04	0 100 100	12, 16, 28, 35	0
1	C	92/96 (95%)	0.03	4 (4%) 34 27	12, 16, 30, 34	0
1	E	93/96 (96%)	0.07	0 100 100	13, 18, 30, 39	0
All	All	278/288 (96%)	0.02	4 (1%) 72 68	12, 17, 30, 39	0

All (4) RSRZ outliers are listed below:

Mol	Chain	Res	Type	RSRZ
1	C	33	LEU	3.5
1	C	85	LEU	3.3
1	C	71	GLN	2.5
1	C	98	LYS	2.1

### 6.2 Non-standard residues in protein, DNA, RNA chains ⓘ

There are no non-standard protein/DNA/RNA residues in this entry.

### 6.3 Carbohydrates ⓘ

There are no carbohydrates in this entry.

### 6.4 Ligands ⓘ

In the following table, the Atoms column lists the number of modelled atoms in the group and the number defined in the chemical component dictionary. LLDF column lists the quality of electron density of the group with respect to its neighbouring residues in protein, DNA or RNA chains. The B-factors column lists the minimum, median, 95<sup>th</sup> percentile and maximum values of B factors of atoms in the group. The column labelled ‘Q< 0.9’ lists the number of atoms with occupancy less than 0.9.

Mol	Type	Chain	Res	Atoms	RSR	LLDF	B-factors( $\text{\AA}^2$ )	Q<0.9
2	2TZ	E	201	36/36	0.13	0.22	17,24,38,38	0
2	2TZ	A	201	36/36	0.11	0.01	16,18,23,25	0
2	2TZ	C	201	36/36	0.09	-0.44	16,18,23,25	0

## 6.5 Other polymers ⓘ

There are no such residues in this entry.