



wwPDB X-ray Structure Validation Summary Report

Feb 26, 2014 – 03:53 PM GMT

PDB ID : 1OGU
Title : STRUCTURE OF HUMAN THR160-PHOSPHO CDK2/CYCLIN A COM-
PLEXED WITH A 2-ARYLAMINO-4-CYCLOHEXYLMETHYL-5-NITROS
O-6-AMINOPYRIMIDINEINHIBITOR
Authors : Pratt, D.J.; Endicott, J.A.; Noble, M.E.M.
Deposited on : 2003-05-13
Resolution : 2.60 Å(reported)

This is a wwPDB validation summary report for a publicly released PDB entry.
We welcome your comments at validation@mail.wwpdb.org
A user guide is available at <http://wwpdb.org/ValidationPDFNotes.html>

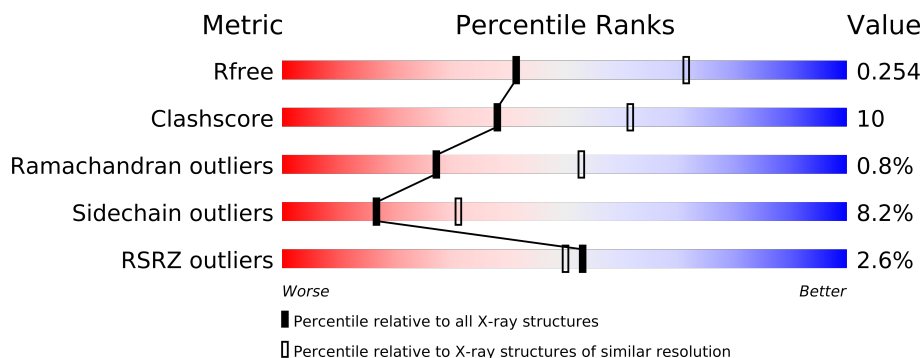
The following versions of software and data (see [references](#)) were used in the production of this report:

MolProbity : 4.02b-467
Mogul : 1.15 2013
Xtriage (Phenix) : dev-1323
EDS : stable22639
Percentile statistics : 21963
Refmac : 5.8.0049
CCP4 : 6.3.0 (Settle)
Ideal geometry (proteins) : Engh & Huber (2001)
Ideal geometry (DNA, RNA) : Parkinson et. al. (1996)
Validation Pipeline (wwPDB-VP) : stable22683

1 Overall quality at a glance

The reported resolution of this entry is 2.60 Å.

Percentile scores (ranging between 0-100) for global validation metrics of the entry are shown in the following graphic. The table shows the number of entries on which the scores are based.



Metric	Whole archive (#Entries)	Similar resolution (#Entries, resolution range(Å))
R_{free}	66092	1718 (2.60-2.60)
Clashscore	79885	2154 (2.60-2.60)
Ramachandran outliers	78287	2113 (2.60-2.60)
Sidechain outliers	78261	2113 (2.60-2.60)
RSRZ outliers	66119	1718 (2.60-2.60)

The table below summarises the geometric issues observed across the polymeric chains and their fit to the electron density. The red, orange, yellow and green segments on the lower bar indicate the fraction of residues that contain outliers for ≥ 3 , 2, 1 and 0 types of geometric quality criteria. The upper red bar (where present) indicates the fraction of residues that have poor fit to the electron density.

Mol	Chain	Length	Quality of chain
1	A	302	
1	C	302	
2	B	260	
2	D	260	

2 Entry composition i

There are 5 unique types of molecules in this entry. The entry contains 8893 atoms, of which 0 are hydrogen and 0 are deuterium.

In the tables below, the ZeroOcc column contains the number of atoms modelled with zero occupancy, the AltConf column contains the number of residues with at least one atom in alternate conformation and the Trace column contains the number of residues modelled with at most 2 atoms.

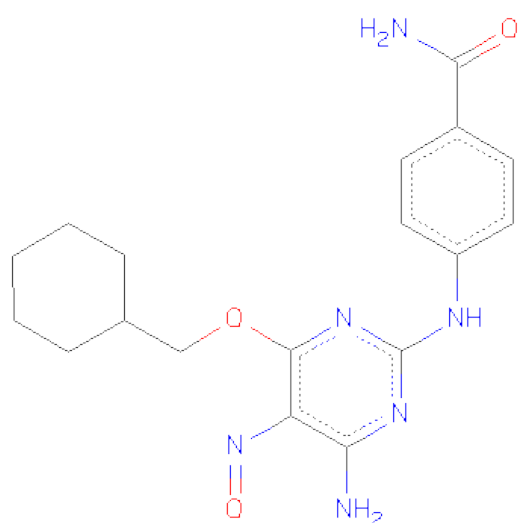
- Molecule 1 is a protein called CELL DIVISION PROTEIN KINASE 2.

Mol	Chain	Residues	Atoms						ZeroOcc	AltConf	Trace
1	A	297	Total	C	N	O	P	S	0	1	0
			2392	1554	409	420	1	8			
1	C	273	Total	C	N	O	P	S	0	0	0
			2185	1417	372	388	1	7			

- Molecule 2 is a protein called CYCLIN A2.

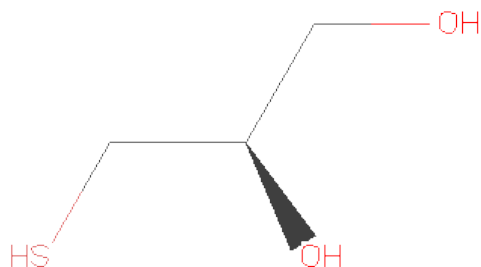
Mol	Chain	Residues	Atoms						ZeroOcc	AltConf	Trace
2	B	253	Total	C	N	O	S		0	1	0
			2050	1331	335	373	11				
2	D	255	Total	C	N	O	S		0	1	0
			2066	1339	337	379	11				

- Molecule 3 is 4-{{4-AMINO-6-(CYCLOHEXYLMETHOXY)-5-NITROSOPYRIMIDIN-2-YL}AMINO}BENZAMIDE (three-letter code: ST8) (formula: C₁₈H₂₂N₆O₃).



Mol	Chain	Residues	Atoms				ZeroOcc	AltConf
3	A	1	Total	C	N	O	0	0
			27	18	6	3		
3	C	1	Total	C	N	O	0	0
			27	18	6	3		

- Molecule 4 is MONOTHIOGLYCEROL (three-letter code: SGM) (formula: $C_3H_8O_2S$).



Mol	Chain	Residues	Atoms				ZeroOcc	AltConf
4	B	1	Total	C	O	S	0	0
			6	3	2	1		
4	D	1	Total	C	O	S	0	0
			6	3	2	1		

- Molecule 5 is water.

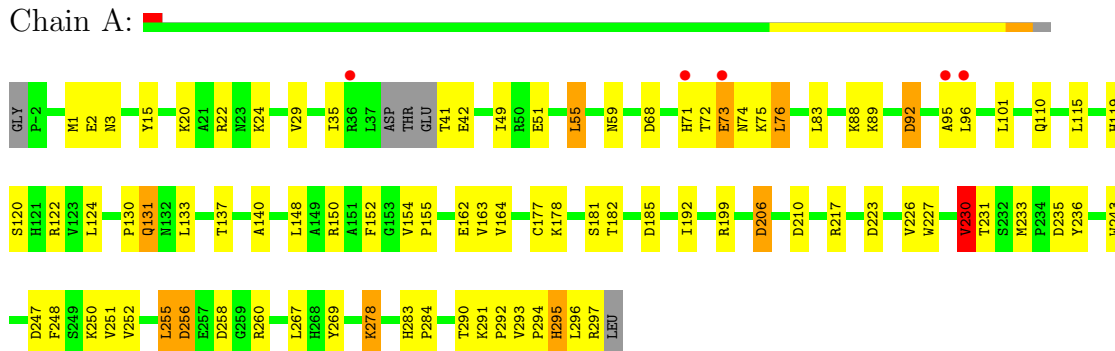
Mol	Chain	Residues	Atoms		ZeroOcc	AltConf
5	A	44	Total	O	0	0
			44	44		
5	B	37	Total	O	0	0
			37	37		
5	C	25	Total	O	0	0
			25	25		
5	D	28	Total	O	0	0
			28	28		

3 Residue-property plots

These plots are drawn for all protein, RNA and DNA chains in the entry. The first graphic for a chain summarises the proportions of errors displayed in the second graphic. The second graphic shows the sequence view annotated by issues in geometry and electron density. Residues are color-coded according to the number of geometric quality criteria for which they contain at least one outlier: green = 0, yellow = 1, orange = 2 and red = 3 or more. A red dot above a residue indicates a poor fit to the electron density ($RSRZ > 2$). Stretches of 2 or more consecutive residues without any outlier are shown as a green connector. Residues present in the sample, but not in the model, are shown in grey.

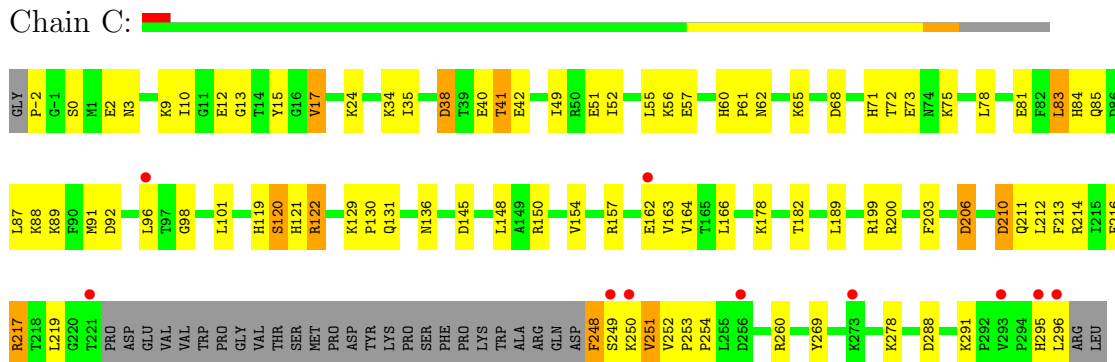
• Molecule 1: CELL DIVISION PROTEIN KINASE 2

Chain A:



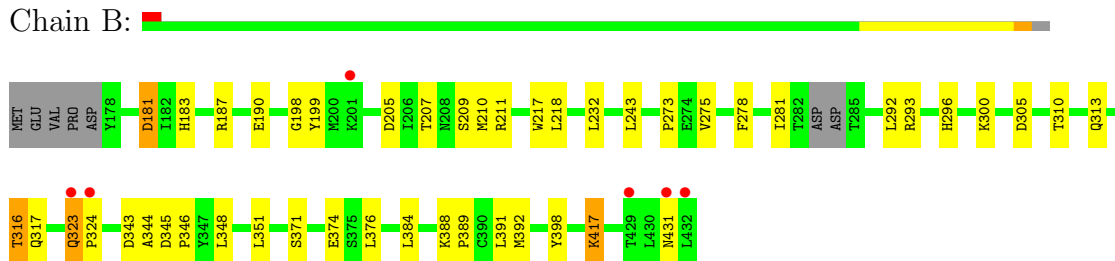
• Molecule 1: CELL DIVISION PROTEIN KINASE 2

Chain C:



• Molecule 2: CYCLIN A2

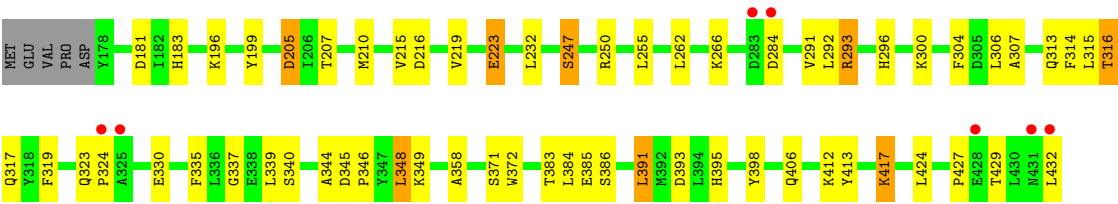
Chain B:



• Molecule 2: CYCLIN A2

Chain D:





4 Data and refinement statistics

Property	Value	Source
Space group	P 21 21 21	Depositor
Cell constants a, b, c, α , β , γ	73.84Å 133.68Å 148.34Å 90.00° 90.00° 90.00°	Depositor
Resolution (Å)	100.00 – 2.60 32.60 – 2.60	Depositor EDS
% Data completeness (in resolution range)	90.0 (100.00-2.60) 90.1 (32.60-2.60)	Depositor EDS
R_{merge}	0.09	Depositor
R_{sym}	(Not available)	Depositor
$\langle I/\sigma(I) \rangle$ ¹	1.64 (at 2.61Å)	Xtriage
Refinement program	REFMAC 5.1.24	Depositor
R, R_{free}	0.198 , 0.260 0.193 , 0.254	Depositor DCC
R_{free} test set	2076 reflections (5.28%)	DCC
Wilson B-factor (Å ²)	37.4	Xtriage
Anisotropy	0.197	Xtriage
Bulk solvent k_{sol} (e/Å ³), B_{sol} (Å ²)	0.38 , 17.9	EDS
Estimated twinning fraction	No twinning to report.	Xtriage
L-test for twinning	$\langle L \rangle = 0.47$, $\langle L^2 \rangle = 0.30$	Xtriage
Outliers	1 of 41382 reflections (0.002%)	Xtriage
F_o, F_c correlation	0.93	EDS
Total number of atoms	8893	wwPDB-VP
Average B, all atoms (Å ²)	32.0	wwPDB-VP

Xtriage's analysis on translational NCS is as follows: *The largest off-origin peak in the Patterson function is 2.91% of the height of the origin peak. No significant pseudotranslation is detected.*

¹Intensities estimated from amplitudes.

5 Model quality

5.1 Standard geometry

Bond lengths and bond angles in the following residue types are not validated in this section: TPO, SGM, ST8

The Z score for a bond length (or angle) is the number of standard deviations the observed value is removed from the expected value. A bond length (or angle) with $|Z| > 5$ is considered an outlier worth inspection. RMSZ is the root-mean-square of all Z scores of the bond lengths (or angles).

Mol	Chain	Bond lengths		Bond angles	
		RMSZ	$\# Z > 5$	RMSZ	$\# Z > 5$
1	A	0.90	1/2447 (0.0%)	1.00	12/3317 (0.4%)
1	C	0.78	0/2224	0.91	6/3010 (0.2%)
2	B	0.83	0/2102	0.95	4/2851 (0.1%)
2	D	0.75	0/2119	0.90	5/2876 (0.2%)
All	All	0.82	1/8892 (0.0%)	0.94	27/12054 (0.2%)

Chiral center outliers are detected by calculating the chiral volume of a chiral center and verifying if the center is modelled as a planar moiety or with the opposite hand. A planarity outlier is detected by checking planarity of atoms in a peptide group, atoms in a mainchain group or atoms of a sidechain that are expected to be planar.

Mol	Chain	#Chirality outliers	#Planarity outliers
2	B	0	1

All (1) bond length outliers are listed below:

Mol	Chain	Res	Type	Atoms	Z	Observed(Å)	Ideal(Å)
1	A	256	ASP	CB-CG	5.46	1.63	1.51

The worst 5 of 27 bond angle outliers are listed below:

Mol	Chain	Res	Type	Atoms	Z	Observed(°)	Ideal(°)
1	C	210	ASP	CB-CG-OD2	9.05	126.45	118.30
1	C	206	ASP	CB-CG-OD2	7.62	125.16	118.30
1	A	247	ASP	CB-CG-OD2	7.33	124.89	118.30
2	D	393	ASP	CB-CG-OD2	7.10	124.69	118.30
1	A	68	ASP	CB-CG-OD1	6.79	124.41	118.30

There are no chirality outliers.

All (1) planarity outliers are listed below:

Mol	Chain	Res	Type	Group
2	B	198	GLY	Peptide

5.2 Close contacts ⓘ

In the following table, the Non-H and H(model) columns list the number of non-hydrogen atoms and hydrogen atoms in the chain respectively. The H(added) column lists the number of hydrogens added by MolProbity. The Clashes column lists the number of clashes within the asymmetric unit, and the number in parentheses is this value normalized per 1000 atoms of the molecule in the chain. The Symm-Clashes column gives symmetry related clashes, in the same way as for the Clashes column.

Mol	Chain	Non-H	H(model)	H(added)	Clashes	Symm-Clashes
1	A	2392	0	2438	53	1
1	C	2185	0	2240	62	0
2	B	2050	0	2081	39	1
2	D	2066	0	2090	40	0
3	A	27	0	22	2	0
3	C	27	0	22	5	0
4	B	6	0	7	3	0
4	D	6	0	7	0	0
5	A	44	0	0	2	0
5	B	37	0	0	1	0
5	C	25	0	0	2	0
5	D	28	0	0	0	0
All	All	8893	0	8907	174	1

Clashscore is defined as the number of clashes calculated for the entry per 1000 atoms (including hydrogens) of the entry. The overall clashscore for this entry is 10.

The worst 5 of 174 close contacts within the same asymmetric unit are listed below.

Atom-1	Atom-2	Distance(Å)	Clash(Å)
1:C:71:HIS:HE1	2:D:304:PHE:CE2	1.66	1.13
1:C:71:HIS:CE1	2:D:304:PHE:HE2	1.65	1.12
1:C:84:HIS:CD2	1:C:296:LEU:HD13	2.01	0.96
1:A:95:ALA:O	1:A:199:ARG:NH1	2.03	0.91
1:C:212:LEU:HD11	1:C:216:PHE:CE2	2.09	0.88

All (1) symmetry-related close contacts are listed below. The label for Atom-2 includes the symmetry operator and encoded unit-cell translations to be applied.

Atom-1	Atom-2	Distance(Å)	Clash(Å)
1:A:199:ARG:NH2	2:B:374:GLU:OE2[4_456]	2.07	0.13

5.3 Torsion angles

5.3.1 Protein backbone ⓘ

In the following table, the Percentiles column shows the percent Ramachandran outliers of the chain as a percentile score with respect to all X-ray entries followed by that with respect to entries of similar resolution. The Analysed column shows the number of residues for which the backbone conformation was analysed, and the total number of residues.

Mol	Chain	Analysed	Favoured	Allowed	Outliers	Percentiles	
1	A	293/302 (97%)	281 (96%)	10 (3%)	2 (1%)	30	58
1	C	268/302 (89%)	250 (93%)	12 (4%)	6 (2%)	10	18
2	B	250/260 (96%)	245 (98%)	5 (2%)	0	100	100
2	D	254/260 (98%)	242 (95%)	12 (5%)	0	100	100
All	All	1065/1124 (95%)	1018 (96%)	39 (4%)	8 (1%)	27	53

5 of 8 Ramachandran outliers are listed below:

Mol	Chain	Res	Type
1	C	164	VAL
1	A	164	VAL
1	A	295	HIS
1	C	145	ASP
1	C	162	GLU

5.3.2 Protein sidechains ⓘ

In the following table, the Percentiles column shows the percent sidechain outliers of the chain as a percentile score with respect to all X-ray entries followed by that with respect to entries of similar resolution. The Analysed column shows the number of residues for which the sidechain conformation was analysed, and the total number of residues.

Mol	Chain	Analysed	Rotameric	Outliers	Percentiles	
1	A	261/264 (99%)	237 (91%)	24 (9%)	13	24
1	C	238/264 (90%)	215 (90%)	23 (10%)	12	22
2	B	228/234 (97%)	216 (95%)	12 (5%)	32	58
2	D	230/234 (98%)	211 (92%)	19 (8%)	16	30
All	All	957/996 (96%)	879 (92%)	78 (8%)	17	31

5 of 78 residues with a non-rotameric sidechain are listed below:

Mol	Chain	Res	Type
2	B	417	LYS
1	C	96	LEU
2	D	386	SER
1	C	9	LYS
1	C	41	THR

Some sidechains can be flipped to improve hydrogen bonding and reduce clashes. 5 of 16 such sidechains are listed below:

Mol	Chain	Res	Type
1	C	60	HIS
1	C	71	HIS
2	D	254	GLN
2	B	396	GLN
2	D	296	HIS

5.3.3 RNA ⓘ

There are no RNA chains in this entry.

5.4 Non-standard residues in protein, DNA, RNA chains ⓘ

2 non-standard protein/DNA/RNA residues are modelled in this entry.

In the following table, the Counts columns list the number of bonds (or angles) for which Mogul statistics could be retrieved, the number of bonds (or angles) that are observed in the model and the number of bonds (or angles) that are defined in the chemical component dictionary. The Link column lists molecule types, if any, to which the group is linked. The Z score for a bond length (or angle) is the number of standard deviations the observed value is removed from the expected value. A bond length (or angle) with $|Z| > 2$ is considered an outlier worth inspection. RMSZ is the root-mean-square of all Z scores of the bond lengths (or angles).

Mol	Type	Chain	Res	Link	Bond lengths			Bond angles		
					Counts	RMSZ	$\# Z > 2$	Counts	RMSZ	$\# Z > 2$
1	TPO	A	160	1	10,10,11	5.58	2 (20%)	12,14,16	1.50	2 (16%)
1	TPO	C	160	1	10,10,11	5.55	3 (30%)	12,14,16	1.50	2 (16%)

In the following table, the Chirals column lists the number of chiral outliers, the number of chiral centers analysed, the number of these observed in the model and the number defined in the chemical component dictionary. Similar counts are reported in the Torsion and Rings columns. '-' means no outliers of that kind were identified.

Mol	Type	Chain	Res	Link	Chirals	Torsions	Rings
1	TPO	A	160	1	-	0/9/11/13	0/0/0/0
1	TPO	C	160	1	-	0/9/11/13	0/0/0/0

All (5) bond length outliers are listed below:

Mol	Chain	Res	Type	Atoms	Z	Observed(Å)	Ideal(Å)
1	A	160	TPO	O-C	17.25	1.23	1.11
1	C	160	TPO	O-C	17.14	1.23	1.11
1	C	160	TPO	CA-C	2.62	1.53	1.48
1	A	160	TPO	P-OG1	-2.47	1.52	1.59
1	C	160	TPO	P-OG1	-2.29	1.52	1.59

All (4) bond angle outliers are listed below:

Mol	Chain	Res	Type	Atoms	Z	Observed(°)	Ideal(°)
1	A	160	TPO	CB-CA-N	-3.75	104.35	109.60
1	C	160	TPO	CB-CA-N	-3.53	104.67	109.60
1	C	160	TPO	OG1-CB-CG2	2.48	114.28	110.13
1	A	160	TPO	OG1-CB-CA	2.08	111.03	107.55

There are no chirality outliers.

There are no torsion outliers.

There are no ring outliers.

5.5 Carbohydrates

There are no carbohydrates in this entry.

5.6 Ligand geometry

4 ligands are modelled in this entry.

In the following table, the Counts columns list the number of bonds (or angles) for which Mogul statistics could be retrieved, the number of bonds (or angles) that are observed in the model and the number of bonds (or angles) that are defined in the chemical component dictionary. The Link column lists molecule types, if any, to which the group is linked. The Z score for a bond length (or angle) is the number of standard deviations the observed value is removed from the expected value. A bond length (or angle) with $|Z| > 2$ is considered an outlier worth inspection. RMSZ is the root-mean-square of all Z scores of the bond lengths (or angles).

Mol	Type	Chain	Res	Link	Bond lengths			Bond angles		
					Counts	RMSZ	# Z > 2	Counts	RMSZ	# Z > 2
3	ST8	A	1298	-	29,29,29	1.27	3 (10%)	39,39,39	1.99	10 (25%)
4	SGM	B	1193	2	5,5,5	0.74	0	5,5,5	0.72	0
3	ST8	C	1297	-	29,29,29	1.32	3 (10%)	39,39,39	2.13	14 (35%)
4	SGM	D	1193	2	5,5,5	1.32	1 (20%)	5,5,5	2.25	1 (20%)

In the following table, the Chirals column lists the number of chiral outliers, the number of chiral centers analysed, the number of these observed in the model and the number defined in the chemical component dictionary. Similar counts are reported in the Torsion and Rings columns. '-' means no outliers of that kind were identified.

Mol	Type	Chain	Res	Link	Chirals	Torsions	Rings
3	ST8	A	1298	-	-	0/15/23/23	0/3/3/3
4	SGM	B	1193	2	-	0/4/4/4	0/0/0/0
3	ST8	C	1297	-	-	0/15/23/23	0/3/3/3
4	SGM	D	1193	2	-	0/4/4/4	0/0/0/0

The worst 5 of 7 bond length outliers are listed below:

Mol	Chain	Res	Type	Atoms	Z	Observed(Å)	Ideal(Å)
3	C	1297	ST8	C23-N25	4.58	1.43	1.33
3	A	1298	ST8	C23-N25	4.31	1.42	1.33
4	D	1193	SGM	C1-S1	-2.82	1.74	1.81
3	A	1298	ST8	C5-C6	2.65	1.48	1.41
3	C	1297	ST8	C4-N3	2.39	1.36	1.32

The worst 5 of 25 bond angle outliers are listed below:

Mol	Chain	Res	Type	Atoms	Z	Observed(°)	Ideal(°)
3	A	1298	ST8	C20-C23-N25	6.16	124.78	117.77
3	C	1297	ST8	C15-C16-C11	-5.45	103.28	112.23
3	C	1297	ST8	C6-C5-C4	4.83	117.79	114.54
4	D	1193	SGM	C2-C1-S1	-4.80	107.09	114.66
3	C	1297	ST8	C5-C4-N3	-4.29	117.74	123.55

There are no chirality outliers.

There are no torsion outliers.

There are no ring outliers.

5.7 Other polymers ⓘ

There are no such residues in this entry.

5.8 Polymer linkage issues

There are no chain breaks in this entry.

6 Fit of model and data ⓘ

6.1 Protein, DNA and RNA chains ⓘ

In the following table, the column labelled ‘#RSRZ > 2’ contains the number (and percentage) of RSRZ outliers, followed by percent RSRZ outliers for the chain as percentile scores relative to all X-ray entries and entries of similar resolution. The OWAB column contains the minimum, median, 95th percentile and maximum values of the occupancy-weighted average B-factor per residue. The column labelled ‘Q < 0.9’ lists the number of (and percentage) of residues with an average occupancy less than 0.9.

Mol	Chain	Analysed	<RSRZ>	#RSRZ>2	OWAB(Å ²)	Q<0.9
1	A	297/302 (98%)	-0.40	5 (1%) 67 66	13, 23, 43, 62	0
1	C	273/302 (90%)	-0.02	10 (3%) 39 35	22, 37, 57, 75	0
2	B	253/260 (97%)	-0.45	6 (2%) 56 53	14, 26, 44, 58	0
2	D	255/260 (98%)	0.01	7 (2%) 52 49	20, 38, 61, 75	0
All	All	1078/1124 (95%)	-0.22	28 (2%) 53 50	13, 31, 56, 75	0

The worst 5 of 28 RSRZ outliers are listed below:

Mol	Chain	Res	Type	RSRZ
1	A	96	LEU	5.0
1	C	293	VAL	4.1
1	C	250	LYS	4.0
2	D	428	GLU	3.5
1	C	295	HIS	3.4

6.2 Non-standard residues in protein, DNA, RNA chains ⓘ

In the following table, the Atoms column lists the number of modelled atoms in the group and the number defined in the chemical component dictionary. LLDF column lists the quality of electron density of the group with respect to its neighbouring residues in protein, DNA or RNA chains. The B-factors column lists the minimum, median, 95th percentile and maximum values of B factors of atoms in the group. The column labelled ‘Q < 0.9’ lists the number of atoms with occupancy less than 0.9.

Mol	Type	Chain	Res	Atoms	RSR	LLDF	B-factors(Å ²)	Q<0.9
1	TPO	C	160	11/12	0.12	-0.72	28,34,40,40	0
1	TPO	A	160	11/12	0.10	-0.96	18,22,24,25	0

6.3 Carbohydrates ⓘ

There are no carbohydrates in this entry.

6.4 Ligands ⓘ

In the following table, the Atoms column lists the number of modelled atoms in the group and the number defined in the chemical component dictionary. LLDF column lists the quality of electron density of the group with respect to its neighbouring residues in protein, DNA or RNA chains. The B-factors column lists the minimum, median, 95th percentile and maximum values of B factors of atoms in the group. The column labelled 'Q< 0.9' lists the number of atoms with occupancy less than 0.9.

Mol	Type	Chain	Res	Atoms	RSR	LLDF	B-factors(Å ²)	Q<0.9
4	SGM	B	1193	6/6	0.16	0.44	30,33,37,45	0
3	ST8	C	1297	27/27	0.16	0.21	26,30,39,40	0
3	ST8	A	1298	27/27	0.14	0.16	24,29,37,38	0
4	SGM	D	1193	6/6	0.15	-0.12	45,47,48,48	0

6.5 Other polymers ⓘ

There are no such residues in this entry.