



wwPDB X-ray Structure Validation Summary Report

Feb 26, 2014 – 04:17 PM GMT

PDB ID : 1OGY
Title : CRYSTAL STRUCTURE OF THE HETERODIMERIC NITRATE REDUCTASE FROM RHODOBACTER SPHAEROIDES
Authors : Arnoux, P.; Sabaty, M.; Alric, J.; Frangioni, B.; Guigliarelli, B.; Adriano, J.-M.; Pignol, D.
Deposited on : 2003-05-19
Resolution : 3.20 Å(reported)

This is a wwPDB validation summary report for a publicly released PDB entry.
We welcome your comments at validation@mail.wwpdb.org
A user guide is available at <http://wwpdb.org/ValidationPDFNotes.html>

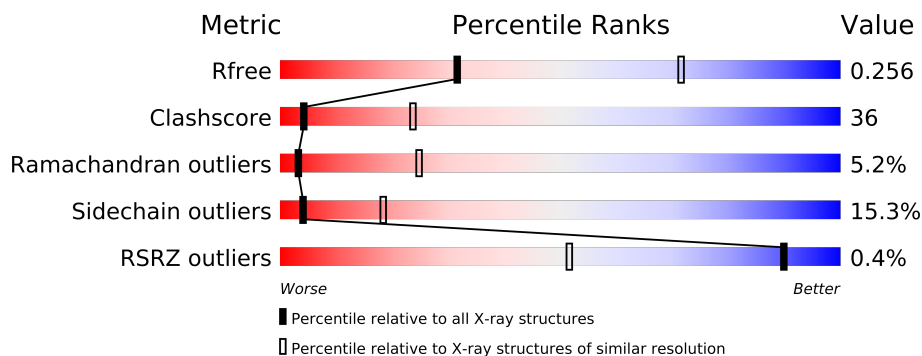
The following versions of software and data (see [references](#)) were used in the production of this report:

MolProbity : 4.02b-467
Mogul : 1.15 2013
Xtriage (Phenix) : dev-1323
EDS : stable22639
Percentile statistics : 21963
Refmac : 5.8.0049
CCP4 : 6.3.0 (Settle)
Ideal geometry (proteins) : Engh & Huber (2001)
Ideal geometry (DNA, RNA) : Parkinson et. al. (1996)
Validation Pipeline (wwPDB-VP) : stable22683

1 Overall quality at a glance

The reported resolution of this entry is 3.20 Å.

Percentile scores (ranging between 0-100) for global validation metrics of the entry are shown in the following graphic. The table shows the number of entries on which the scores are based.



Metric	Whole archive (#Entries)	Similar resolution (#Entries, resolution range(Å))
R_{free}	66092	1824 (3.30-3.10)
Clashscore	79885	1078 (3.26-3.14)
Ramachandran outliers	78287	1059 (3.26-3.14)
Sidechain outliers	78261	1058 (3.26-3.14)
RSRZ outliers	66119	1825 (3.30-3.10)

The table below summarises the geometric issues observed across the polymeric chains and their fit to the electron density. The red, orange, yellow and green segments on the lower bar indicate the fraction of residues that contain outliers for ≥ 3 , 2, 1 and 0 types of geometric quality criteria. The upper red bar (where present) indicates the fraction of residues that have poor fit to the electron density.

Mol	Chain	Length	Quality of chain
1	A	802	
1	C	802	
1	E	802	
1	G	802	
1	I	802	
1	K	802	
1	M	802	
1	O	802	
2	B	130	
2	D	130	
2	F	130	
2	H	130	
2	J	130	
2	L	130	

Continued on next page...

Continued from previous page...

Mol	Chain	Length	Quality of chain
2	N	130	
2	P	130	

2 Entry composition

There are 6 unique types of molecules in this entry. The entry contains 59336 atoms, of which 0 are hydrogen and 0 are deuterium.

In the tables below, the ZeroOcc column contains the number of atoms modelled with zero occupancy, the AltConf column contains the number of residues with at least one atom in alternate conformation and the Trace column contains the number of residues modelled with at most 2 atoms.

- Molecule 1 is a protein called PERIPLASMIC NITRATE REDUCTASE.

Mol	Chain	Residues	Atoms					ZeroOcc	AltConf	Trace
1	A	790	Total	C	N	O	S	0	0	1
			6251	3961	1114	1144	32			
1	C	790	Total	C	N	O	S	0	0	1
			6251	3961	1114	1144	32			
1	E	790	Total	C	N	O	S	0	0	1
			6251	3961	1114	1144	32			
1	G	790	Total	C	N	O	S	0	0	1
			6251	3961	1114	1144	32			
1	I	790	Total	C	N	O	S	0	0	1
			6251	3961	1114	1144	32			
1	K	790	Total	C	N	O	S	0	0	1
			6251	3961	1114	1144	32			
1	M	790	Total	C	N	O	S	0	0	1
			6251	3961	1114	1144	32			
1	O	790	Total	C	N	O	S	0	0	1
			6251	3961	1114	1144	32			

- Molecule 2 is a protein called DIHEME CYTOCHROME C NAPB MOLECULE: NITRATE REDUCTASE.

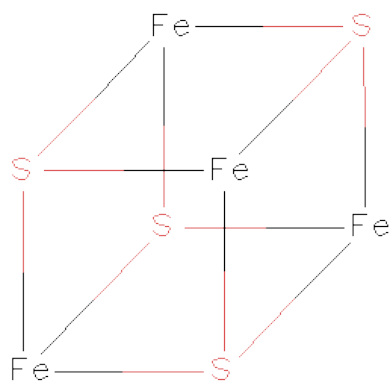
Mol	Chain	Residues	Atoms					ZeroOcc	AltConf	Trace
2	B	127	Total	C	N	O	S	0	0	1
			977	603	180	185	9			
2	D	127	Total	C	N	O	S	0	0	1
			977	603	180	185	9			
2	F	127	Total	C	N	O	S	0	0	1
			977	603	180	185	9			
2	H	127	Total	C	N	O	S	0	0	1
			977	603	180	185	9			
2	J	127	Total	C	N	O	S	0	0	1
			977	603	180	185	9			
2	L	127	Total	C	N	O	S	0	0	1
			977	603	180	185	9			

Continued on next page...

Continued from previous page...

Mol	Chain	Residues	Atoms					ZeroOcc	AltConf	Trace
2	N	127	Total	C	N	O	S	0	0	1
			977	603	180	185	9			
2	P	127	Total	C	N	O	S	0	0	1
			977	603	180	185	9			

- Molecule 3 is IRON/SULFUR CLUSTER (three-letter code: SF4) (formula: Fe_4S_4).

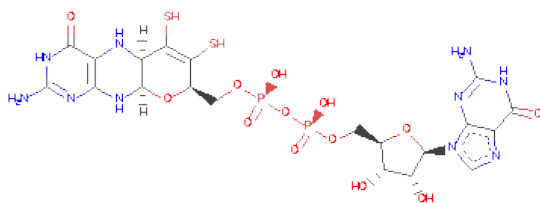


Mol	Chain	Residues	Atoms			ZeroOcc	AltConf
3	A	1	Total	Fe	S	0	0
			8	4	4		
3	C	1	Total	Fe	S	0	0
			8	4	4		
3	E	1	Total	Fe	S	0	0
			8	4	4		
3	G	1	Total	Fe	S	0	0
			8	4	4		
3	I	1	Total	Fe	S	0	0
			8	4	4		
3	K	1	Total	Fe	S	0	0
			8	4	4		
3	M	1	Total	Fe	S	0	0
			8	4	4		
3	O	1	Total	Fe	S	0	0
			8	4	4		

- Molecule 4 is MOLYBDENUM ATOM (three-letter code: MO) (formula: Mo).

Mol	Chain	Residues	Atoms	ZeroOcc	AltConf
4	G	1	Total Mo 1 1	0	0
4	K	1	Total Mo 1 1	0	0
4	E	1	Total Mo 1 1	0	0
4	I	1	Total Mo 1 1	0	0
4	C	1	Total Mo 1 1	0	0
4	A	1	Total Mo 1 1	0	0
4	O	1	Total Mo 1 1	0	0
4	M	1	Total Mo 1 1	0	0

- Molecule 5 is 2-AMINO-5,6-DIMERCAPTO-7-METHYL-3,7,8A,9-TETRAHYDRO-8-OXA-1,3,9,10-TETRAAZA-ANTHRACEN-4-ONEGUANOSINE DINUCLEOTIDE (three-letter code: MGD) (formula: $C_{20}H_{26}N_{10}O_{13}P_2S_2$).



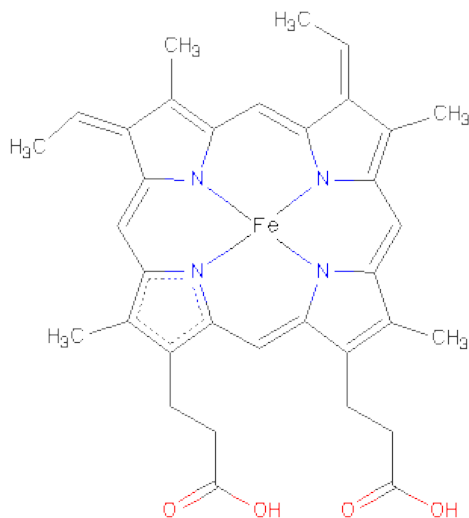
Mol	Chain	Residues	Atoms	ZeroOcc	AltConf
5	A	1	Total C N O P S 47 20 10 13 2 2	0	0
5	A	1	Total C N O P S 47 20 10 13 2 2	0	0
5	C	1	Total C N O P S 47 20 10 13 2 2	0	0

Continued on next page...

Continued from previous page...

Mol	Chain	Residues	Atoms						ZeroOcc	AltConf
5	C	1	Total 47	C 20	N 10	O 13	P 2	S 2	0	0
5	E	1	Total 47	C 20	N 10	O 13	P 2	S 2	0	0
5	E	1	Total 47	C 20	N 10	O 13	P 2	S 2	0	0
5	G	1	Total 47	C 20	N 10	O 13	P 2	S 2	0	0
5	G	1	Total 47	C 20	N 10	O 13	P 2	S 2	0	0
5	I	1	Total 47	C 20	N 10	O 13	P 2	S 2	0	0
5	I	1	Total 47	C 20	N 10	O 13	P 2	S 2	0	0
5	K	1	Total 47	C 20	N 10	O 13	P 2	S 2	0	0
5	K	1	Total 47	C 20	N 10	O 13	P 2	S 2	0	0
5	M	1	Total 47	C 20	N 10	O 13	P 2	S 2	0	0
5	M	1	Total 47	C 20	N 10	O 13	P 2	S 2	0	0
5	O	1	Total 47	C 20	N 10	O 13	P 2	S 2	0	0
5	O	1	Total 47	C 20	N 10	O 13	P 2	S 2	0	0

- Molecule 6 is HEME C (three-letter code: HEC) (formula: $C_{34}H_{34}FeN_4O_4$).



Mol	Chain	Residues	Atoms					ZeroOcc	AltConf
6	B	1	Total 43	C 34	Fe 1	N 4	O 4	0	0
6	B	1	Total 43	C 34	Fe 1	N 4	O 4	0	0
6	D	1	Total 43	C 34	Fe 1	N 4	O 4	0	0
6	D	1	Total 43	C 34	Fe 1	N 4	O 4	0	0
6	F	1	Total 43	C 34	Fe 1	N 4	O 4	0	0
6	F	1	Total 43	C 34	Fe 1	N 4	O 4	0	0
6	H	1	Total 43	C 34	Fe 1	N 4	O 4	0	0
6	H	1	Total 43	C 34	Fe 1	N 4	O 4	0	0
6	J	1	Total 43	C 34	Fe 1	N 4	O 4	0	0
6	J	1	Total 43	C 34	Fe 1	N 4	O 4	0	0
6	L	1	Total 43	C 34	Fe 1	N 4	O 4	0	0
6	L	1	Total 43	C 34	Fe 1	N 4	O 4	0	0
6	N	1	Total 43	C 34	Fe 1	N 4	O 4	0	0
6	N	1	Total 43	C 34	Fe 1	N 4	O 4	0	0

Continued on next page...

Continued from previous page...

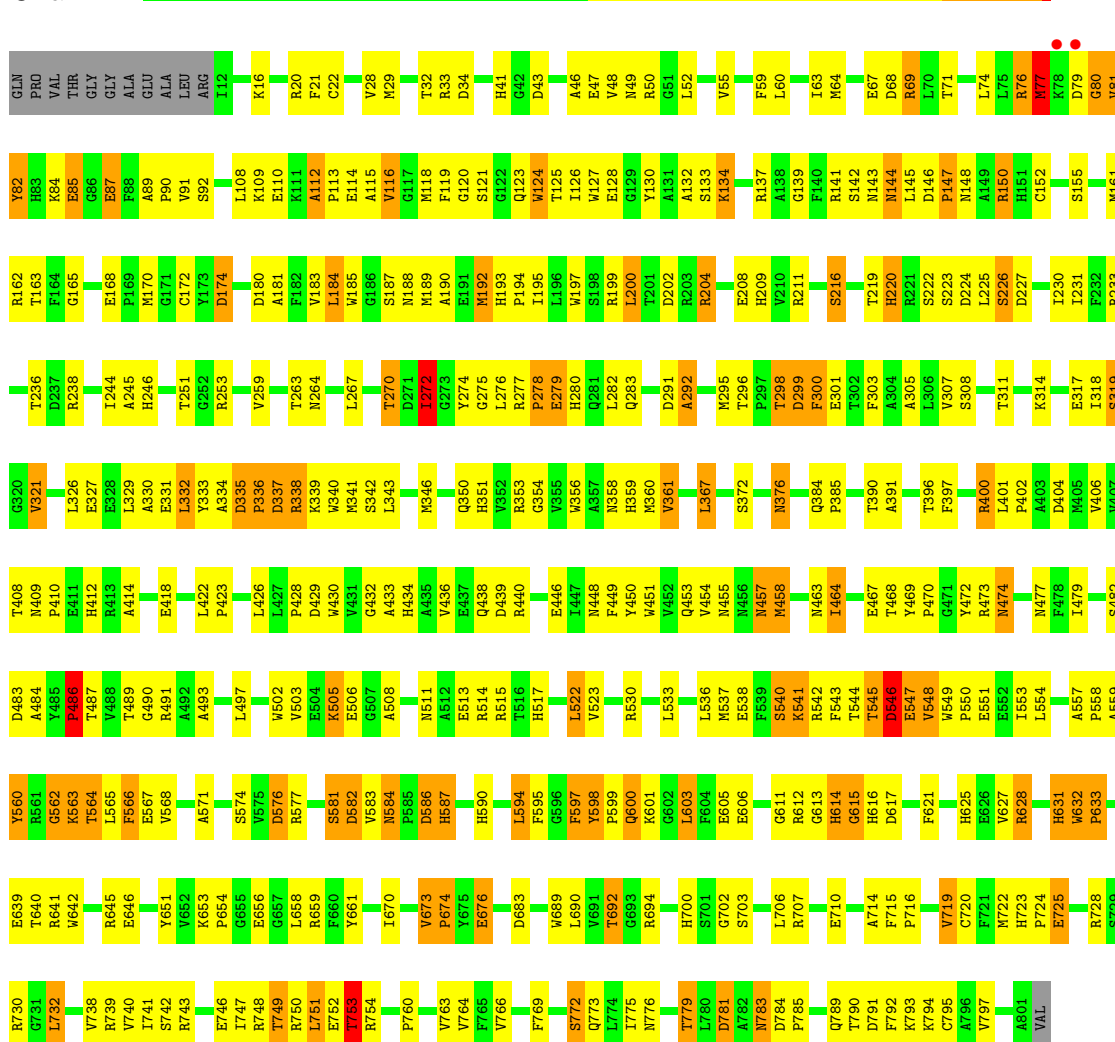
Mol	Chain	Residues	Atoms					ZeroOcc	AltConf
6	P	1	Total	C	Fe	N	O	0	0
			43	34	1	4	4		
6	P	1	Total	C	Fe	N	O	0	0
			43	34	1	4	4		

3 Residue-property plots

These plots are drawn for all protein, RNA and DNA chains in the entry. The first graphic for a chain summarises the proportions of errors displayed in the second graphic. The second graphic shows the sequence view annotated by issues in geometry and electron density. Residues are color-coded according to the number of geometric quality criteria for which they contain at least one outlier: green = 0, yellow = 1, orange = 2 and red = 3 or more. A red dot above a residue indicates a poor fit to the electron density ($RSRZ > 2$). Stretches of 2 or more consecutive residues without any outlier are shown as a green connector. Residues present in the sample, but not in the model, are shown in grey.

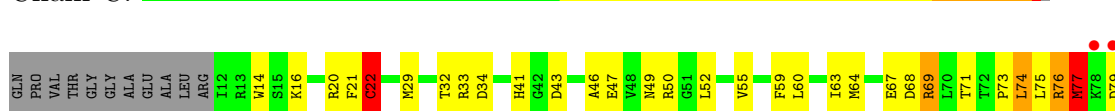
• Molecule 1: PERIPLASMIC NITRATE REDUCTASE

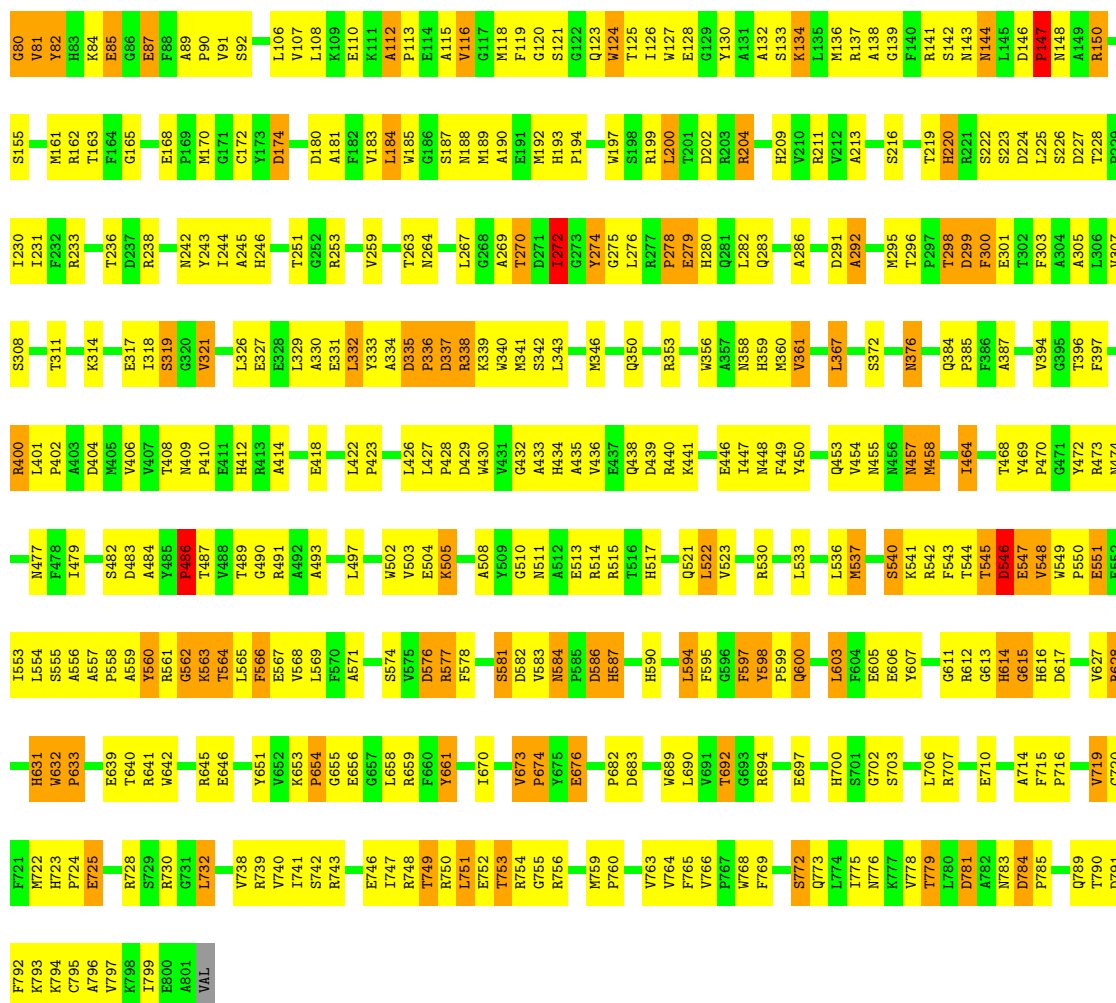
Chain A:



• Molecule 1: PERIPLASMIC NITRATE REDUCTASE

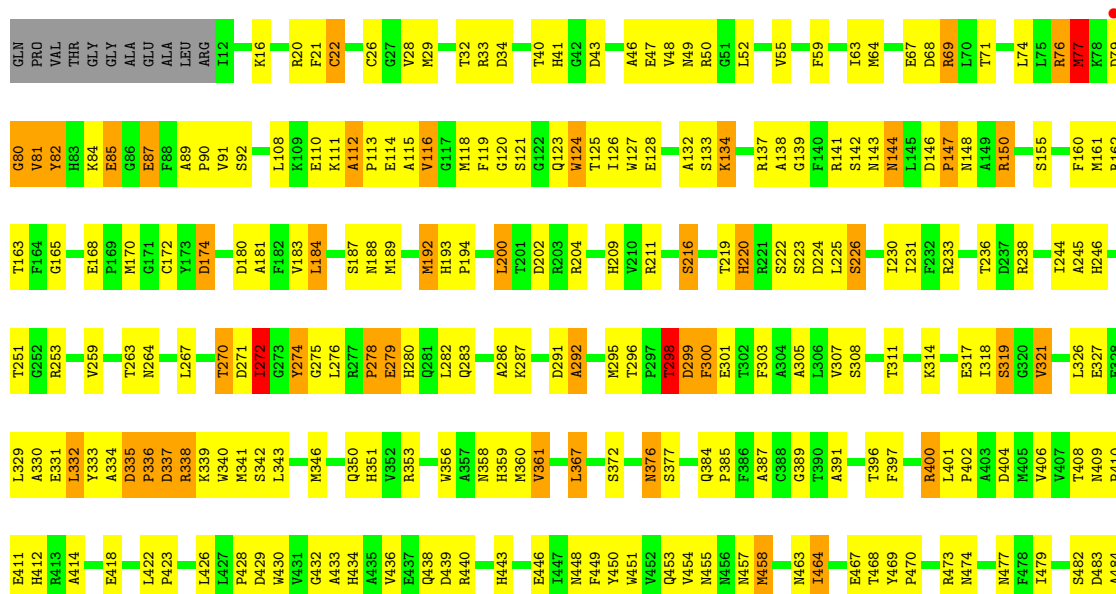
Chain C:

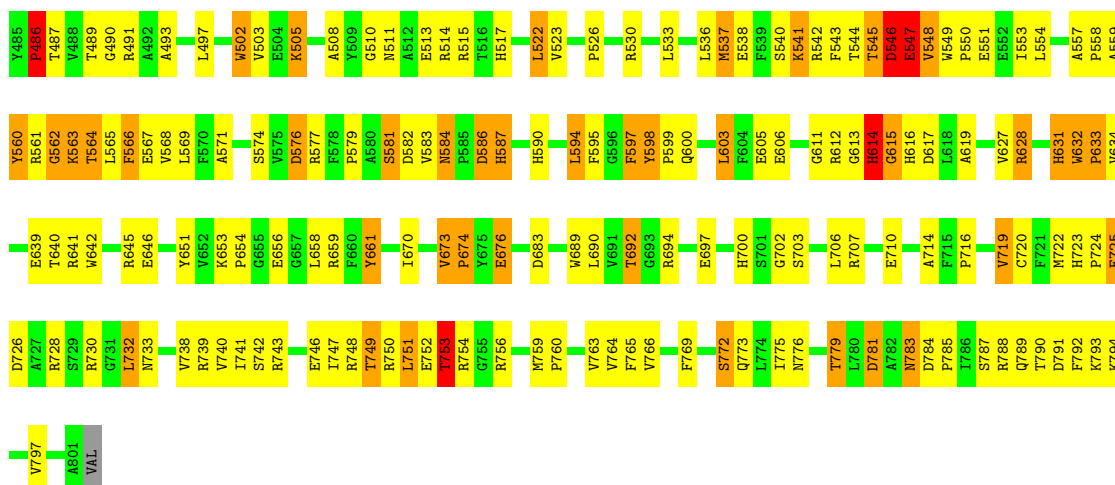




• Molecule 1: PERIPLASMIC NITRATE REDUCTASE

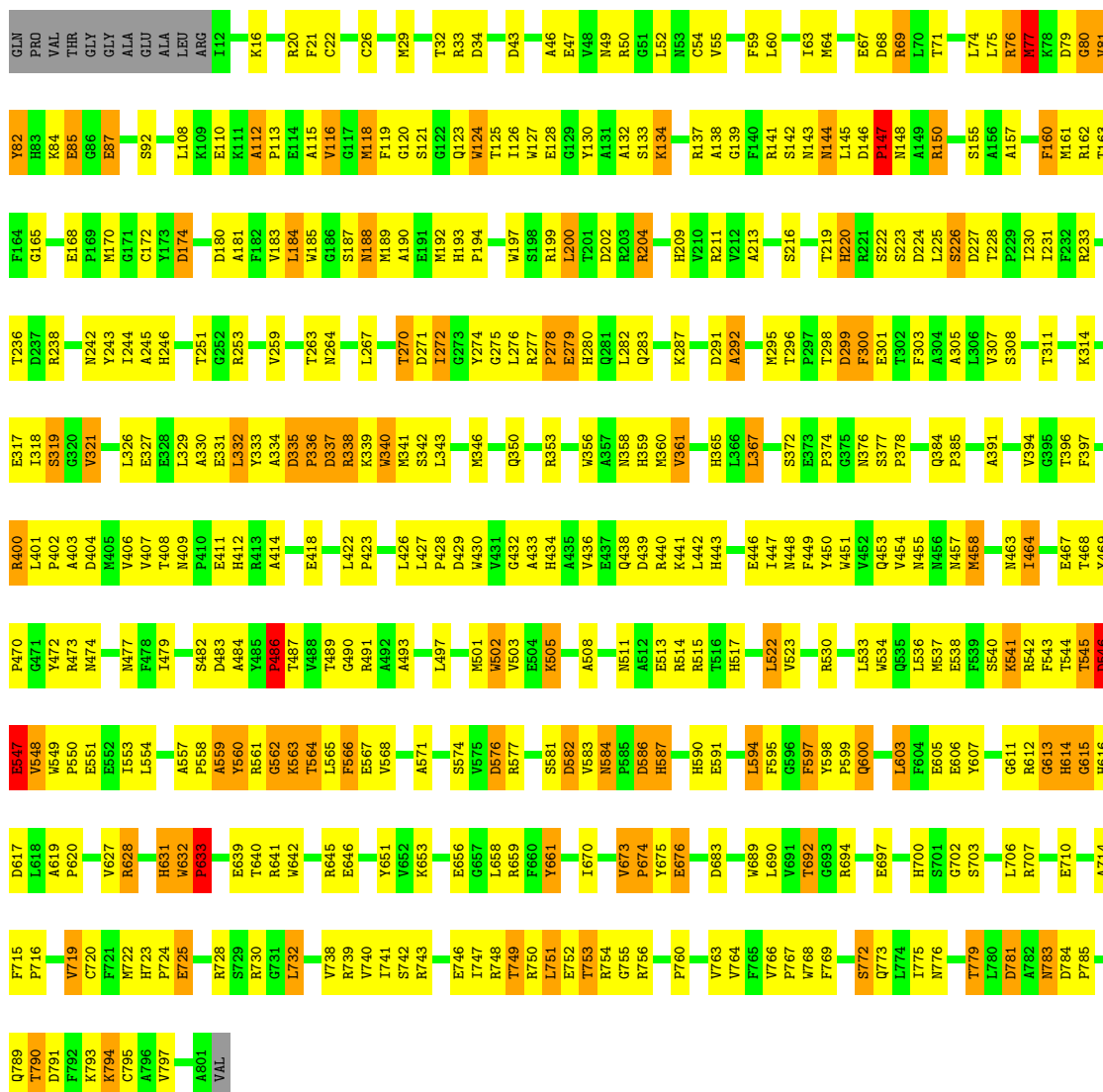
Chain E:

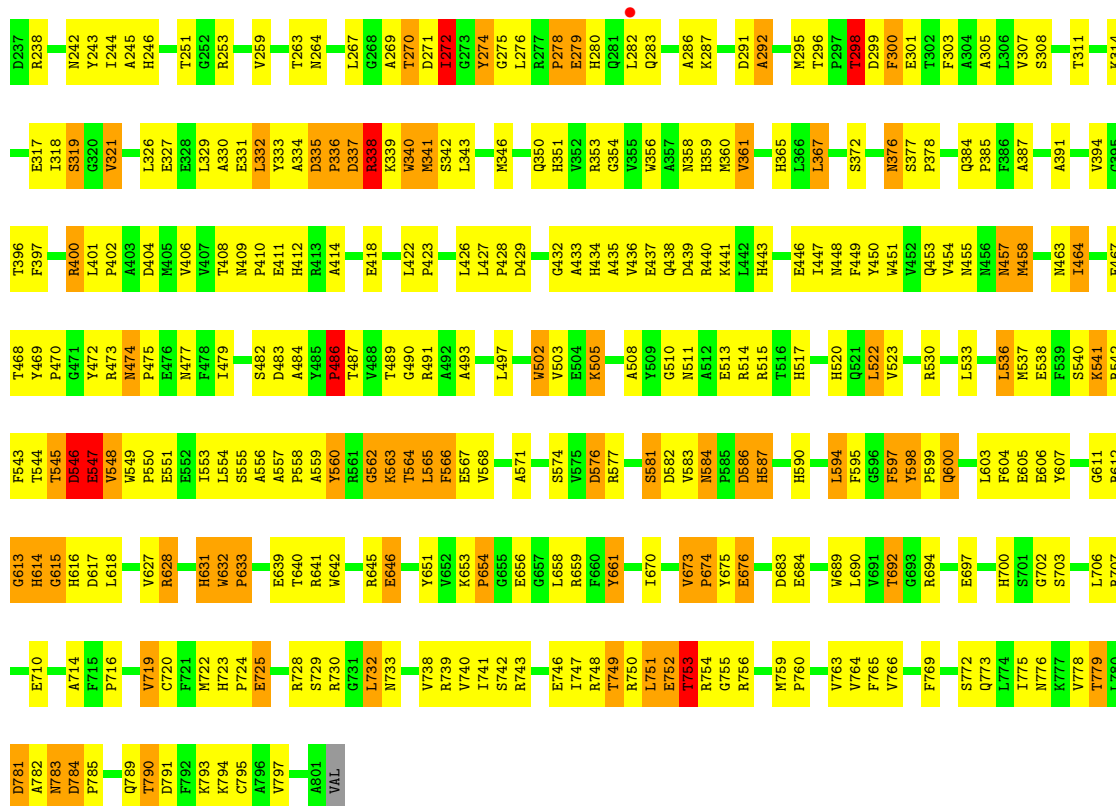




• Molecule 1: PERIPLASMIC NITRATE REDUCTASE

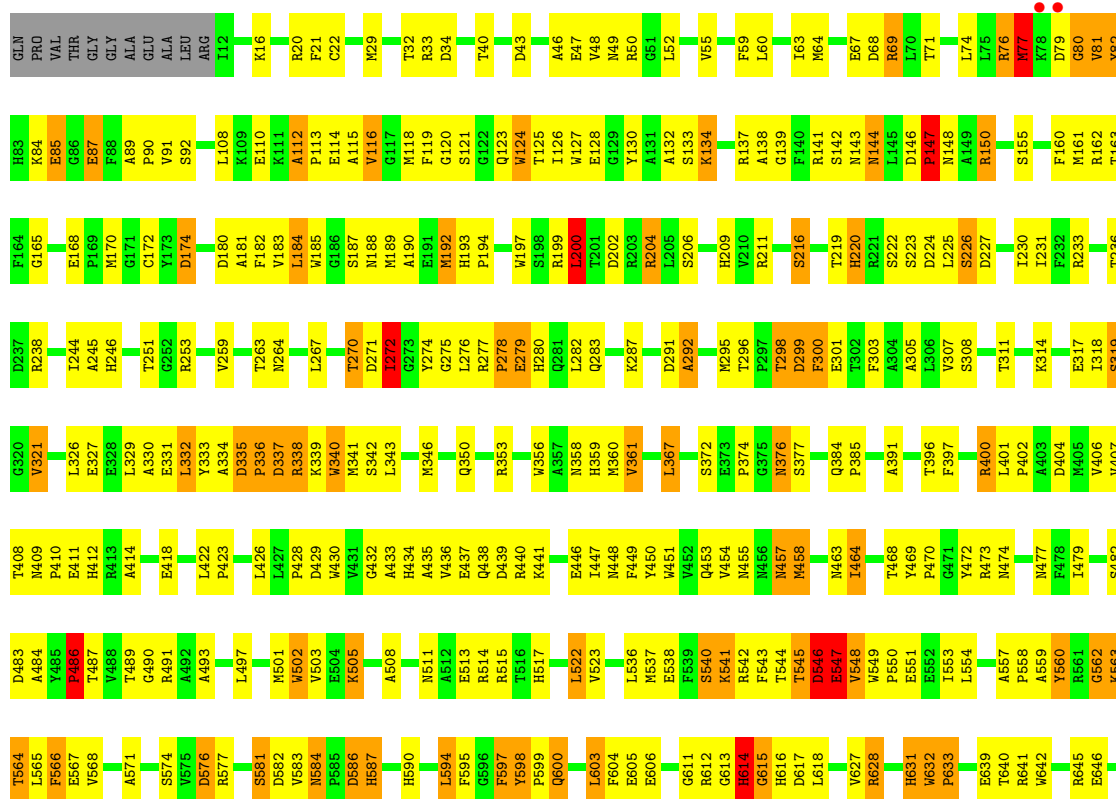
Chain G:

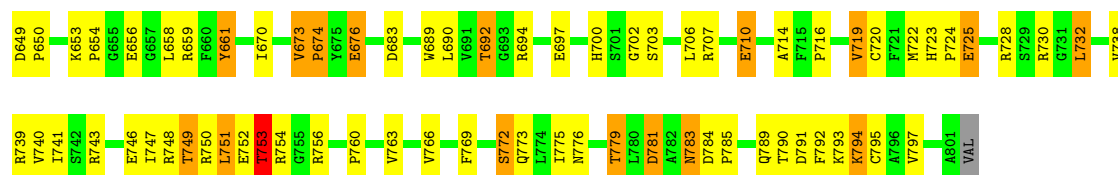




● Molecule 1: PERIPLASMIC NITRATE REDUCTASE

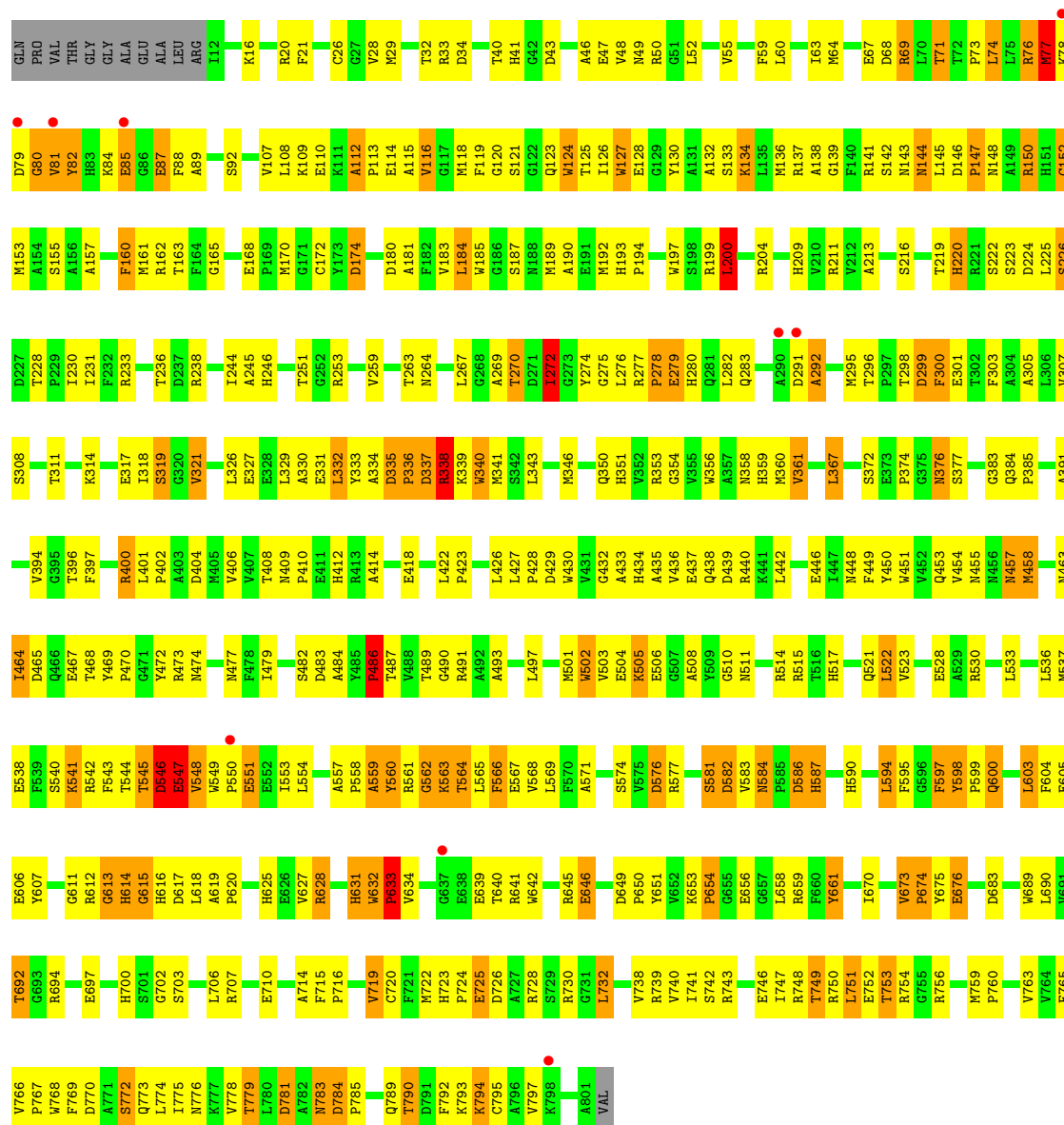
Chain M:





• Molecule 1: PERIPLASMIC NITRATE REDUCTASE

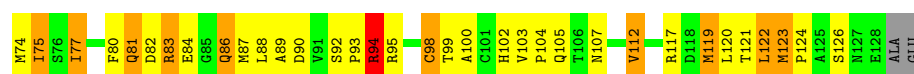
Chain O:



• Molecule 2: DIHEME CYTOCHROME C NAPB MOLECULE: NITRATE REDUCTASE

Chain B:





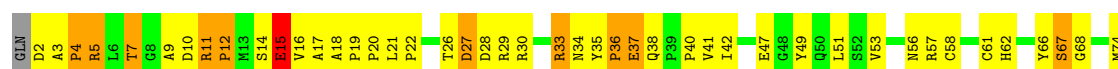
• Molecule 2: DIHEME CYTOCHROME C NAPB MOLECULE: NITRATE REDUCTASE

Chain D:



• Molecule 2: DIHEME CYTOCHROME C NAPB MOLECULE: NITRATE REDUCTASE

Chain F:



• Molecule 2: DIHEME CYTOCHROME C NAPB MOLECULE: NITRATE REDUCTASE

Chain H:



• Molecule 2: DIHEME CYTOCHROME C NAPB MOLECULE: NITRATE REDUCTASE

Chain J:



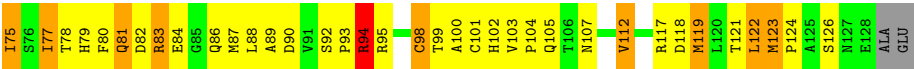
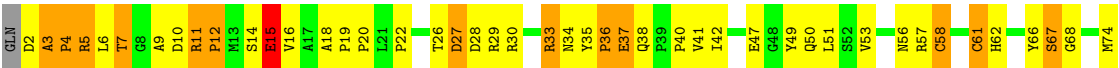
• Molecule 2: DIHEME CYTOCHROME C NAPB MOLECULE: NITRATE REDUCTASE

Chain L:



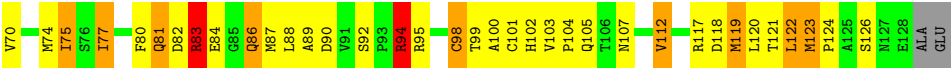
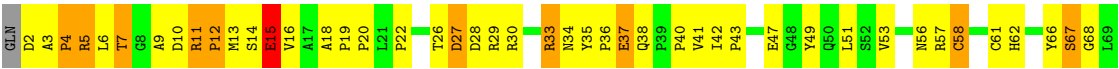
• Molecule 2: DIHEME CYTOCHROME C NAPB MOLECULE: NITRATE REDUCTASE

Chain N: 



● Molecule 2: DIHEME CYTOCHROME C NAPB MOLECULE: NITRATE REDUCTASE

Chain P: 



4 Data and refinement statistics

Property	Value	Source
Space group	P 1 21 1	Depositor
Cell constants a, b, c, α , β , γ	123.00Å 225.20Å 154.60Å 90.00° 92.10° 90.00°	Depositor
Resolution (Å)	30.00 – 3.20 29.94 – 3.20	Depositor EDS
% Data completeness (in resolution range)	97.1 (30.00-3.20) 97.0 (29.94-3.20)	Depositor EDS
R_{merge}	0.11	Depositor
R_{sym}	(Not available)	Depositor
$\langle I/\sigma(I) \rangle$ ¹	1.96 (at 3.18Å)	Xtriage
Refinement program	CNS 1.1	Depositor
R, R_{free}	0.250 , 0.269 0.240 , 0.256	Depositor DCC
R_{free} test set	1348 reflections (1.01%)	DCC
Wilson B-factor (Å ²)	57.6	Xtriage
Anisotropy	0.055	Xtriage
Bulk solvent k_{sol} (e/Å ³), B_{sol} (Å ²)	0.30 , 2.8	EDS
Estimated twinning fraction	0.035 for h,-k,-l	Xtriage
L-test for twinning	$\langle L \rangle = 0.47$, $\langle L^2 \rangle = 0.29$	Xtriage
Outliers	0 of 134459 reflections	Xtriage
F_o, F_c correlation	0.87	EDS
Total number of atoms	59336	wwPDB-VP
Average B, all atoms (Å ²)	42.0	wwPDB-VP

Xtriage's analysis on translational NCS is as follows: *The largest off-origin peak in the Patterson function is 2.78% of the height of the origin peak. No significant pseudotranslation is detected.*

¹Intensities estimated from amplitudes.

5 Model quality ⓘ

5.1 Standard geometry ⓘ

Bond lengths and bond angles in the following residue types are not validated in this section: SF4, HEC, MO, MGD

The Z score for a bond length (or angle) is the number of standard deviations the observed value is removed from the expected value. A bond length (or angle) with $|Z| > 5$ is considered an outlier worth inspection. RMSZ is the root-mean-square of all Z scores of the bond lengths (or angles).

Mol	Chain	Bond lengths		Bond angles	
		RMSZ	$\# Z > 5$	RMSZ	$\# Z > 5$
1	A	0.70	2/6433 (0.0%)	0.89	13/8741 (0.1%)
1	C	0.67	1/6433 (0.0%)	0.90	13/8741 (0.1%)
1	E	0.70	3/6433 (0.0%)	0.89	13/8741 (0.1%)
1	G	0.70	1/6433 (0.0%)	0.92	12/8741 (0.1%)
1	I	0.82	2/6433 (0.0%)	0.92	13/8741 (0.1%)
1	K	0.68	2/6433 (0.0%)	0.91	16/8741 (0.2%)
1	M	0.66	1/6433 (0.0%)	0.89	13/8741 (0.1%)
1	O	0.76	1/6433 (0.0%)	0.92	16/8741 (0.2%)
2	B	0.74	0/1001	0.94	1/1368 (0.1%)
2	D	0.72	0/1001	0.93	1/1368 (0.1%)
2	F	0.75	0/1001	0.94	1/1368 (0.1%)
2	H	0.76	0/1001	0.95	1/1368 (0.1%)
2	J	0.73	0/1001	0.96	2/1368 (0.1%)
2	L	0.75	2/1001 (0.2%)	0.95	1/1368 (0.1%)
2	N	0.78	1/1001 (0.1%)	0.95	1/1368 (0.1%)
2	P	0.73	0/1001	0.94	2/1368 (0.1%)
All	All	0.72	16/59472 (0.0%)	0.91	119/80872 (0.1%)

The worst 5 of 16 bond length outliers are listed below:

Mol	Chain	Res	Type	Atoms	Z	Observed(Å)	Ideal(Å)
1	E	22	CYS	CB-SG	-9.02	1.67	1.82
1	G	54	CYS	CB-SG	-7.57	1.69	1.82
1	K	22	CYS	CB-SG	-7.20	1.70	1.82
1	I	19	CYS	CB-SG	7.16	1.94	1.82
1	O	152	CYS	CB-SG	6.88	1.94	1.82

The worst 5 of 119 bond angle outliers are listed below:

Mol	Chain	Res	Type	Atoms	Z	Observed(°)	Ideal(°)
1	G	632	TRP	C-N-CD	-24.39	66.94	120.60

Continued on next page...

Continued from previous page...

Mol	Chain	Res	Type	Atoms	Z	Observed(°)	Ideal(°)
1	K	632	TRP	C-N-CD	-22.20	71.75	120.60
1	O	632	TRP	C-N-CD	-21.86	72.50	120.60
1	I	632	TRP	C-N-CD	-21.10	74.19	120.60
1	E	632	TRP	C-N-CD	-17.95	81.12	120.60

There are no chirality outliers.

There are no planarity outliers.

5.2 Close contacts

In the following table, the Non-H and H(model) columns list the number of non-hydrogen atoms and hydrogen atoms in the chain respectively. The H(added) column lists the number of hydrogens added by MolProbity. The Clashes column lists the number of clashes within the asymmetric unit, and the number in parentheses is this value normalized per 1000 atoms of the molecule in the chain. The Symm-Clashes column gives symmetry related clashes, in the same way as for the Clashes column.

Mol	Chain	Non-H	H(model)	H(added)	Clashes	Symm-Clashes
1	A	6251	0	5967	418	2
1	C	6251	0	5966	441	3
1	E	6251	0	5968	421	1
1	G	6251	0	5966	430	0
1	I	6251	0	5967	466	0
1	K	6251	0	5966	449	3
1	M	6251	0	5966	427	1
1	O	6251	0	5967	470	0
2	B	977	0	937	92	0
2	D	977	0	941	107	0
2	F	977	0	941	95	0
2	H	977	0	941	113	0
2	J	977	0	941	103	0
2	L	977	0	941	107	0
2	N	977	0	941	111	0
2	P	977	0	941	114	0
3	A	8	0	0	0	0
3	C	8	0	0	1	0
3	E	8	0	0	1	0
3	G	8	0	0	0	0
3	I	8	0	0	0	0
3	K	8	0	0	1	0
3	M	8	0	0	0	0

Continued on next page...

Continued from previous page...

Mol	Chain	Non-H	H(model)	H(added)	Clashes	Symm-Clashes
3	O	8	0	0	0	0
4	A	1	0	0	0	0
4	C	1	0	0	0	0
4	E	1	0	0	0	0
4	G	1	0	0	0	0
4	I	1	0	0	0	0
4	K	1	0	0	0	0
4	M	1	0	0	0	0
4	O	1	0	0	0	0
5	A	94	0	44	15	0
5	C	94	0	44	14	0
5	E	94	0	44	15	0
5	G	94	0	44	13	0
5	I	94	0	44	13	0
5	K	94	0	44	15	0
5	M	94	0	44	15	0
5	O	94	0	44	15	0
6	B	86	0	60	15	0
6	D	86	0	64	33	0
6	F	86	0	64	23	0
6	H	86	0	64	27	0
6	J	86	0	64	27	0
6	L	86	0	64	26	0
6	N	86	0	64	30	0
6	P	86	0	64	25	0
All	All	59336	0	56117	4193	5

Clashscore is defined as the number of clashes calculated for the entry per 1000 atoms (including hydrogens) of the entry. The overall clashscore for this entry is 36.

The worst 5 of 4193 close contacts within the same asymmetric unit are listed below.

Atom-1	Atom-2	Distance(Å)	Clash(Å)
2:N:58:CYS:SG	6:N:1128:HEC:HAB	1.34	1.64
2:F:98:CYS:SG	6:F:1129:HEC:HAB	1.39	1.61
2:J:98:CYS:SG	6:J:1129:HEC:HAB	1.38	1.61
2:H:58:CYS:SG	6:H:1128:HEC:HAB	1.41	1.60
2:D:98:CYS:SG	6:D:1129:HEC:HAB	1.45	1.57

All (5) symmetry-related close contacts are listed below. The label for Atom-2 includes the symmetry operator and encoded unit-cell translations to be applied.

Atom-1	Atom-2	Distance(Å)	Clash(Å)
1:A:109:LYS:CG	1:C:655:GLY:O[2_556]	1.82	0.38
1:C:577:ARG:CB	1:K:287:LYS:NZ[2_545]	1.90	0.30
1:C:577:ARG:CG	1:K:287:LYS:NZ[2_545]	1.97	0.23
1:E:411:GLU:OE2	1:M:410:PRO:CG[1_556]	2.06	0.14
1:A:410:PRO:CB	1:K:411:GLU:OE2[1_556]	2.15	0.05

5.3 Torsion angles

5.3.1 Protein backbone ⓘ

In the following table, the Percentiles column shows the percent Ramachandran outliers of the chain as a percentile score with respect to all X-ray entries followed by that with respect to entries of similar resolution. The Analysed column shows the number of residues for which the backbone conformation was analysed, and the total number of residues.

Mol	Chain	Analysed	Favoured	Allowed	Outliers	Percentiles	
1	A	788/802 (98%)	669 (85%)	85 (11%)	34 (4%)	4	30
1	C	788/802 (98%)	658 (84%)	94 (12%)	36 (5%)	4	28
1	E	788/802 (98%)	671 (85%)	82 (10%)	35 (4%)	4	29
1	G	788/802 (98%)	666 (84%)	90 (11%)	32 (4%)	4	32
1	I	788/802 (98%)	656 (83%)	99 (13%)	33 (4%)	4	31
1	K	788/802 (98%)	665 (84%)	89 (11%)	34 (4%)	4	30
1	M	788/802 (98%)	665 (84%)	87 (11%)	36 (5%)	4	28
1	O	788/802 (98%)	662 (84%)	92 (12%)	34 (4%)	4	30
2	B	125/130 (96%)	98 (78%)	14 (11%)	13 (10%)	1	5
2	D	125/130 (96%)	100 (80%)	13 (10%)	12 (10%)	1	7
2	F	125/130 (96%)	98 (78%)	14 (11%)	13 (10%)	1	5
2	H	125/130 (96%)	98 (78%)	14 (11%)	13 (10%)	1	5
2	J	125/130 (96%)	100 (80%)	11 (9%)	14 (11%)	1	4
2	L	125/130 (96%)	98 (78%)	14 (11%)	13 (10%)	1	5
2	N	125/130 (96%)	97 (78%)	14 (11%)	14 (11%)	1	4
2	P	125/130 (96%)	99 (79%)	14 (11%)	12 (10%)	1	7
All	All	7304/7456 (98%)	6100 (84%)	826 (11%)	378 (5%)	3	25

5 of 378 Ramachandran outliers are listed below:

Mol	Chain	Res	Type
1	A	22	CYS
1	A	81	VAL
1	A	85	GLU
1	A	274	TYR
1	A	275	GLY

5.3.2 Protein sidechains ⓘ

In the following table, the Percentiles column shows the percent sidechain outliers of the chain as a percentile score with respect to all X-ray entries followed by that with respect to entries of similar resolution. The Analysed column shows the number of residues for which the sidechain conformation was analysed, and the total number of residues.

Mol	Chain	Analysed	Rotameric	Outliers	Percentiles	
1	A	641/651 (98%)	546 (85%)	95 (15%)	4	20
1	C	641/651 (98%)	548 (86%)	93 (14%)	5	22
1	E	641/651 (98%)	546 (85%)	95 (15%)	4	20
1	G	641/651 (98%)	543 (85%)	98 (15%)	4	18
1	I	641/651 (98%)	542 (85%)	99 (15%)	4	18
1	K	641/651 (98%)	547 (85%)	94 (15%)	4	21
1	M	641/651 (98%)	543 (85%)	98 (15%)	4	18
1	O	641/651 (98%)	543 (85%)	98 (15%)	4	18
2	B	108/113 (96%)	89 (82%)	19 (18%)	3	13
2	D	108/113 (96%)	90 (83%)	18 (17%)	3	14
2	F	108/113 (96%)	91 (84%)	17 (16%)	4	17
2	H	108/113 (96%)	91 (84%)	17 (16%)	4	17
2	J	108/113 (96%)	89 (82%)	19 (18%)	3	13
2	L	108/113 (96%)	90 (83%)	18 (17%)	3	14
2	N	108/113 (96%)	90 (83%)	18 (17%)	3	14
2	P	108/113 (96%)	88 (82%)	20 (18%)	2	11
All	All	5992/6112 (98%)	5076 (85%)	916 (15%)	4	18

5 of 916 residues with a non-rotameric sidechain are listed below:

Mol	Chain	Res	Type
1	G	628	ARG
1	I	464	ILE

Continued on next page...

Continued from previous page...

Mol	Chain	Res	Type
1	O	361	VAL
1	G	732	LEU
1	I	116	VAL

Some sidechains can be flipped to improve hydrogen bonding and reduce clashes. 5 of 197 such sidechains are listed below:

Mol	Chain	Res	Type
1	G	700	HIS
1	I	457	ASN
1	O	457	ASN
1	G	733	ASN
1	I	144	ASN

5.3.3 RNA ⓘ

There are no RNA chains in this entry.

5.4 Non-standard residues in protein, DNA, RNA chains ⓘ

There are no non-standard protein/DNA/RNA residues in this entry.

5.5 Carbohydrates ⓘ

There are no carbohydrates in this entry.

5.6 Ligand geometry ⓘ

Of 48 ligands modelled in this entry, 8 are monoatomic - leaving 40 for Mogul analysis.

In the following table, the Counts columns list the number of bonds (or angles) for which Mogul statistics could be retrieved, the number of bonds (or angles) that are observed in the model and the number of bonds (or angles) that are defined in the chemical component dictionary. The Link column lists molecule types, if any, to which the group is linked. The Z score for a bond length (or angle) is the number of standard deviations the observed value is removed from the expected value. A bond length (or angle) with $|Z| > 2$ is considered an outlier worth inspection. RMSZ is the root-mean-square of all Z scores of the bond lengths (or angles).

Mol	Type	Chain	Res	Link	Bond lengths			Bond angles		
					Counts	RMSZ	$\# Z > 2$	Counts	RMSZ	$\# Z > 2$
3	SF4	A	1801	1	12,12,12	18.72	12 (100%)	0,24,24	0.00	-

Mol	Type	Chain	Res	Link	Bond lengths			Bond angles		
					Counts	RMSZ	# Z > 2	Counts	RMSZ	# Z > 2
5	MGD	A	1803	4	52,52,52	2.22	21 (40%)	72,81,81	2.95	16 (22%)
5	MGD	A	1804	4	52,52,52	2.00	18 (34%)	72,81,81	3.84	23 (31%)
6	HEC	B	1128	2	50,50,50	2.94	12 (24%)	56,82,82	2.44	17 (30%)
6	HEC	B	1129	2	50,50,50	2.80	15 (30%)	56,82,82	2.06	14 (25%)
3	SF4	C	1801	1	12,12,12	18.54	12 (100%)	0,24,24	0.00	-
5	MGD	C	1803	4	52,52,52	2.14	20 (38%)	72,81,81	2.90	12 (16%)
5	MGD	C	1804	4	52,52,52	2.18	21 (40%)	72,81,81	3.71	22 (30%)
6	HEC	D	1128	2	50,50,50	2.83	16 (32%)	56,82,82	2.41	19 (33%)
6	HEC	D	1129	2	50,50,50	2.67	15 (30%)	56,82,82	2.17	17 (30%)
3	SF4	E	1801	1	12,12,12	19.44	12 (100%)	0,24,24	0.00	-
5	MGD	E	1803	4	52,52,52	1.99	18 (34%)	72,81,81	3.03	16 (22%)
5	MGD	E	1804	4	52,52,52	2.13	20 (38%)	72,81,81	3.73	25 (34%)
6	HEC	F	1128	2	50,50,50	2.69	15 (30%)	56,82,82	2.19	16 (28%)
6	HEC	F	1129	2	50,50,50	2.88	12 (24%)	56,82,82	2.22	17 (30%)
3	SF4	G	1801	1	12,12,12	18.52	12 (100%)	0,24,24	0.00	-
5	MGD	G	1803	4	52,52,52	2.29	22 (42%)	72,81,81	3.03	18 (25%)
5	MGD	G	1804	4	52,52,52	2.31	21 (40%)	72,81,81	3.54	21 (29%)
6	HEC	H	1128	2	50,50,50	2.72	14 (28%)	56,82,82	2.31	21 (37%)
6	HEC	H	1129	2	50,50,50	3.01	14 (28%)	56,82,82	2.27	18 (32%)
3	SF4	I	1801	1	12,12,12	14.79	10 (83%)	0,24,24	0.00	-
5	MGD	I	1803	4	52,52,52	2.69	26 (50%)	72,81,81	3.00	19 (26%)
5	MGD	I	1804	4	52,52,52	2.42	21 (40%)	72,81,81	4.07	23 (31%)
6	HEC	J	1128	2	50,50,50	2.98	14 (28%)	56,82,82	2.33	16 (28%)
6	HEC	J	1129	2	50,50,50	3.02	15 (30%)	56,82,82	2.44	21 (37%)
3	SF4	K	1801	1	12,12,12	19.10	12 (100%)	0,24,24	0.00	-
5	MGD	K	1803	4	52,52,52	2.13	21 (40%)	72,81,81	2.95	16 (22%)
5	MGD	K	1804	4	52,52,52	2.10	18 (34%)	72,81,81	4.35	25 (34%)
6	HEC	L	1128	2	50,50,50	2.71	15 (30%)	56,82,82	2.16	17 (30%)
6	HEC	L	1129	2	50,50,50	2.57	11 (22%)	56,82,82	2.37	19 (33%)
3	SF4	M	1801	1	12,12,12	18.33	12 (100%)	0,24,24	0.00	-
5	MGD	M	1803	4	52,52,52	2.04	18 (34%)	72,81,81	2.86	14 (19%)
5	MGD	M	1804	4	52,52,52	2.05	17 (32%)	72,81,81	3.63	22 (30%)
6	HEC	N	1128	2	50,50,50	2.84	18 (36%)	56,82,82	2.33	20 (35%)
6	HEC	N	1129	2	50,50,50	3.18	15 (30%)	56,82,82	2.23	17 (30%)
3	SF4	O	1801	1	12,12,12	15.32	10 (83%)	0,24,24	0.00	-

Mol	Type	Chain	Res	Link	Bond lengths			Bond angles		
					Counts	RMSZ	# Z > 2	Counts	RMSZ	# Z > 2
5	MGD	O	1803	4	52,52,52	2.52	26 (50%)	72,81,81	3.05	16 (22%)
5	MGD	O	1804	4	52,52,52	2.39	24 (46%)	72,81,81	3.33	22 (30%)
6	HEC	P	1128	2	50,50,50	3.08	16 (32%)	56,82,82	2.01	12 (21%)
6	HEC	P	1129	2	50,50,50	3.03	17 (34%)	56,82,82	2.29	16 (28%)

In the following table, the Chirals column lists the number of chiral outliers, the number of chiral centers analysed, the number of these observed in the model and the number defined in the chemical component dictionary. Similar counts are reported in the Torsion and Rings columns. '-' means no outliers of that kind were identified.

Mol	Type	Chain	Res	Link	Chirals	Torsions	Rings
3	SF4	A	1801	1	-	0/0/48/48	0/0/5/5
5	MGD	A	1803	4	-	0/22/66/66	0/1/6/6
5	MGD	A	1804	4	-	0/22/66/66	0/1/6/6
6	HEC	B	1128	2	-	0/10/54/54	0/0/8/8
6	HEC	B	1129	2	-	0/10/54/54	0/0/8/8
3	SF4	C	1801	1	-	0/0/48/48	0/0/5/5
5	MGD	C	1803	4	-	0/22/66/66	0/1/6/6
5	MGD	C	1804	4	-	0/22/66/66	0/1/6/6
6	HEC	D	1128	2	-	0/10/54/54	0/0/8/8
6	HEC	D	1129	2	-	0/10/54/54	0/0/8/8
3	SF4	E	1801	1	-	0/0/48/48	0/0/5/5
5	MGD	E	1803	4	-	0/22/66/66	0/1/6/6
5	MGD	E	1804	4	-	0/22/66/66	0/1/6/6
6	HEC	F	1128	2	-	0/10/54/54	0/0/8/8
6	HEC	F	1129	2	-	0/10/54/54	0/0/8/8
3	SF4	G	1801	1	-	0/0/48/48	0/0/5/5
5	MGD	G	1803	4	-	0/22/66/66	0/1/6/6
5	MGD	G	1804	4	-	0/22/66/66	0/1/6/6
6	HEC	H	1128	2	-	0/10/54/54	0/0/8/8
6	HEC	H	1129	2	-	0/10/54/54	0/0/8/8
3	SF4	I	1801	1	-	0/0/48/48	0/0/5/5
5	MGD	I	1803	4	-	0/22/66/66	0/1/6/6
5	MGD	I	1804	4	-	0/22/66/66	0/1/6/6
6	HEC	J	1128	2	-	0/10/54/54	0/0/8/8
6	HEC	J	1129	2	-	0/10/54/54	0/0/8/8
3	SF4	K	1801	1	-	0/0/48/48	0/0/5/5
5	MGD	K	1803	4	-	0/22/66/66	0/1/6/6
5	MGD	K	1804	4	-	0/22/66/66	0/1/6/6
6	HEC	L	1128	2	-	0/10/54/54	0/0/8/8
6	HEC	L	1129	2	-	0/10/54/54	0/0/8/8
3	SF4	M	1801	1	-	0/0/48/48	0/0/5/5

Continued on next page...

Continued from previous page...

Mol	Type	Chain	Res	Link	Chirals	Torsions	Rings
5	MGD	M	1803	4	-	0/22/66/66	0/1/6/6
5	MGD	M	1804	4	-	0/22/66/66	0/1/6/6
6	HEC	N	1128	2	-	0/10/54/54	0/0/8/8
6	HEC	N	1129	2	-	0/10/54/54	0/0/8/8
3	SF4	O	1801	1	-	0/0/48/48	0/0/5/5
5	MGD	O	1803	4	-	0/22/66/66	0/1/6/6
5	MGD	O	1804	4	-	0/22/66/66	0/1/6/6
6	HEC	P	1128	2	-	0/10/54/54	0/0/8/8
6	HEC	P	1129	2	-	0/10/54/54	0/0/8/8

The worst 5 of 658 bond length outliers are listed below:

Mol	Chain	Res	Type	Atoms	Z	Observed(Å)	Ideal(Å)
3	E	1801	SF4	S4-FE1	-33.57	2.10	2.33
3	G	1801	SF4	S4-FE1	-30.87	2.12	2.33
3	C	1801	SF4	S4-FE1	-30.73	2.12	2.33
3	K	1801	SF4	S2-FE4	-30.64	2.12	2.33
3	M	1801	SF4	S2-FE4	-30.55	2.12	2.33

The worst 5 of 587 bond angle outliers are listed below:

Mol	Chain	Res	Type	Atoms	Z	Observed(°)	Ideal(°)
5	K	1804	MGD	C6-C5-N7	-32.10	129.82	134.14
5	I	1804	MGD	C6-C5-N7	-29.88	130.12	134.14
5	A	1804	MGD	C6-C5-N7	-27.30	130.46	134.14
5	E	1804	MGD	C6-C5-N7	-26.42	130.58	134.14
5	C	1804	MGD	C6-C5-N7	-26.07	130.63	134.14

There are no chirality outliers.

There are no torsion outliers.

There are no ring outliers.

5.7 Other polymers ⓘ

There are no such residues in this entry.

5.8 Polymer linkage issues

There are no chain breaks in this entry.

6 Fit of model and data ⓘ

6.1 Protein, DNA and RNA chains ⓘ

In the following table, the column labelled ‘#RSRZ> 2’ contains the number (and percentage) of RSRZ outliers, followed by percent RSRZ outliers for the chain as percentile scores relative to all X-ray entries and entries of similar resolution. The OWAB column contains the minimum, median, 95th percentile and maximum values of the occupancy-weighted average B-factor per residue. The column labelled ‘Q< 0.9’ lists the number of (and percentage) of residues with an average occupancy less than 0.9.

Mol	Chain	Analysed	<RSRZ>	#RSRZ>2	OWAB(Å ²)	Q<0.9
1	A	790/802 (98%)	-0.25	2 (0%) 91 58	10, 24, 60, 88	0
1	C	790/802 (98%)	-0.17	2 (0%) 91 58	12, 38, 70, 92	0
1	E	790/802 (98%)	-0.23	1 (0%) 93 74	10, 30, 63, 88	0
1	G	790/802 (98%)	-0.10	0 100 100	12, 44, 73, 92	0
1	I	790/802 (98%)	0.19	5 (0%) 86 41	23, 58, 77, 92	0
1	K	790/802 (98%)	-0.13	3 (0%) 90 51	17, 43, 70, 90	0
1	M	790/802 (98%)	-0.15	2 (0%) 91 58	13, 42, 70, 91	0
1	O	790/802 (98%)	0.12	9 (1%) 77 27	25, 53, 76, 95	0
2	B	127/130 (97%)	-0.19	0 100 100	10, 33, 70, 83	0
2	D	127/130 (97%)	-0.11	0 100 100	14, 38, 75, 87	0
2	F	127/130 (97%)	-0.17	0 100 100	11, 34, 70, 85	0
2	H	127/130 (97%)	-0.10	1 (0%) 83 35	11, 39, 76, 86	0
2	J	127/130 (97%)	0.02	1 (0%) 83 35	18, 47, 82, 93	0
2	L	127/130 (97%)	-0.12	1 (0%) 83 35	15, 38, 75, 96	0
2	N	127/130 (97%)	-0.14	0 100 100	12, 39, 75, 90	0
2	P	127/130 (97%)	-0.07	0 100 100	19, 44, 76, 89	0
All	All	7336/7456 (98%)	-0.09	27 (0%) 90 51	10, 43, 73, 96	0

The worst 5 of 27 RSRZ outliers are listed below:

Mol	Chain	Res	Type	RSRZ
1	M	78	LYS	4.2
2	J	2	ASP	3.3
1	O	78	LYS	3.0
2	L	2	ASP	3.0
1	E	79	ASP	3.0

6.2 Non-standard residues in protein, DNA, RNA chains ⓘ

There are no non-standard protein/DNA/RNA residues in this entry.

6.3 Carbohydrates ⓘ

There are no carbohydrates in this entry.

6.4 Ligands ⓘ

In the following table, the Atoms column lists the number of modelled atoms in the group and the number defined in the chemical component dictionary. LLDF column lists the quality of electron density of the group with respect to its neighbouring residues in protein, DNA or RNA chains. The B-factors column lists the minimum, median, 95th percentile and maximum values of B factors of atoms in the group. The column labelled 'Q< 0.9' lists the number of atoms with occupancy less than 0.9.

Mol	Type	Chain	Res	Atoms	RSR	LLDF	B-factors(Å ²)	Q<0.9
6	HEC	L	1129	43/43	0.25	1.89	10,29,44,46	0
6	HEC	D	1129	43/43	0.22	1.55	14,19,48,55	0
6	HEC	H	1129	43/43	0.24	1.55	13,19,42,46	0
6	HEC	F	1129	43/43	0.21	1.44	10,19,38,43	0
6	HEC	J	1129	43/43	0.24	1.35	32,43,47,50	0
6	HEC	D	1128	43/43	0.24	0.86	20,29,44,52	0
5	MGD	C	1804	47/47	0.20	0.79	21,27,39,40	0
6	HEC	N	1129	43/43	0.21	0.79	18,27,41,44	0
6	HEC	B	1129	43/43	0.18	0.69	10,16,36,41	0
6	HEC	F	1128	43/43	0.23	0.65	14,23,47,56	0
6	HEC	P	1129	43/43	0.21	0.63	23,40,42,43	0
6	HEC	P	1128	43/43	0.23	0.59	27,37,49,54	0
6	HEC	N	1128	43/43	0.23	0.55	25,31,43,51	0
5	MGD	K	1804	47/47	0.21	0.45	24,36,39,42	0
6	HEC	H	1128	43/43	0.24	0.41	15,24,38,45	0
5	MGD	E	1804	47/47	0.17	0.20	10,12,20,24	0
6	HEC	J	1128	43/43	0.25	0.13	31,37,50,56	0
6	HEC	L	1128	43/43	0.23	-0.02	27,35,44,51	0
5	MGD	A	1803	47/47	0.16	-0.04	10,12,16,17	0
5	MGD	C	1803	47/47	0.17	-0.11	19,26,32,34	0
5	MGD	O	1804	47/47	0.21	-0.12	46,50,53,54	0
5	MGD	A	1804	47/47	0.16	-0.13	10,10,12,18	0
6	HEC	B	1128	43/43	0.19	-0.20	12,15,38,45	0
5	MGD	G	1804	47/47	0.17	-0.27	28,35,39,42	0
5	MGD	K	1803	47/47	0.17	-0.28	31,34,36,40	0

Continued on next page...

Continued from previous page...

Mol	Type	Chain	Res	Atoms	RSR	LLDF	B-factors(\AA^2)	Q<0.9
5	MGD	M	1803	47/47	0.17	-0.35	23,28,34,36	0
5	MGD	I	1804	47/47	0.20	-0.36	47,53,61,64	0
5	MGD	M	1804	47/47	0.17	-0.40	23,26,30,34	0
5	MGD	E	1803	47/47	0.15	-0.47	10,17,21,22	0
5	MGD	I	1803	47/47	0.18	-0.83	34,49,58,61	0
5	MGD	O	1803	47/47	0.16	-0.84	37,45,56,57	0
3	SF4	A	1801	8/8	0.11	-0.86	10,10,10,12	0
3	SF4	E	1801	8/8	0.10	-0.87	10,10,11,12	0
5	MGD	G	1803	47/47	0.14	-1.12	23,26,36,37	0
3	SF4	K	1801	8/8	0.12	-1.27	10,10,11,12	0
3	SF4	G	1801	8/8	0.10	-1.66	10,10,12,12	0
3	SF4	C	1801	8/8	0.10	-1.76	10,10,11,12	0
3	SF4	M	1801	8/8	0.11	-1.85	10,10,12,12	0
3	SF4	O	1801	8/8	0.11	-1.90	29,30,33,33	0
4	MO	G	1802	1/1	0.09	-1.90	35,35,35,35	0
3	SF4	I	1801	8/8	0.12	-1.93	34,37,37,39	0
4	MO	O	1802	1/1	0.08	-2.07	62,62,62,62	0
4	MO	M	1802	1/1	0.08	-2.20	39,39,39,39	0
4	MO	K	1802	1/1	0.09	-2.48	40,40,40,40	0
4	MO	C	1802	1/1	0.08	-2.82	38,38,38,38	0
4	MO	A	1802	1/1	0.08	-4.70	24,24,24,24	0
4	MO	E	1802	1/1	0.07	-4.82	28,28,28,28	0
4	MO	I	1802	1/1	0.05	-5.05	66,66,66,66	0

6.5 Other polymers ⓘ

There are no such residues in this entry.