



Full wwPDB X-ray Structure Validation Report

Feb 27, 2014 – 05:23 AM GMT

PDB ID : 2OG8
Title : crystal structure of aminoquinazoline 36 bound to Lck
Authors : Huang, X.
Deposited on : 2007-01-05
Resolution : 2.30 Å(reported)

This is a full wwPDB validation report for a publicly released PDB entry.
We welcome your comments at validation@mail.wwpdb.org
A user guide is available at <http://wwpdb.org/ValidationPDFNotes.html>

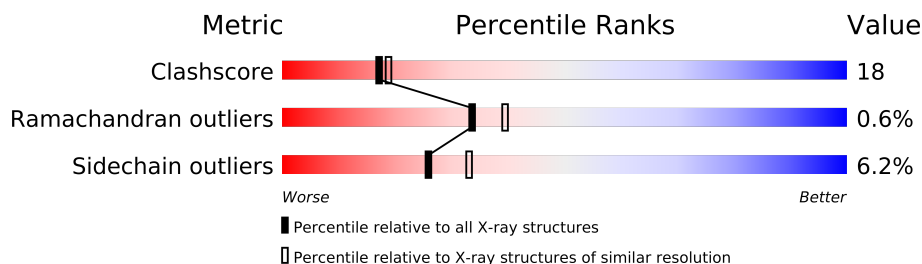
The following versions of software and data (see [references](#)) were used in the production of this report:

MolProbity : 4.02b-467
Mogul : 1.15 2013
Xtriage (Phenix) : NOT EXECUTED
EDS : NOT EXECUTED
Percentile statistics : 21963
Ideal geometry (proteins) : Engh & Huber (2001)
Ideal geometry (DNA, RNA) : Parkinson et. al. (1996)
Validation Pipeline (wwPDB-VP) : stable22683

1 Overall quality at a glance

The reported resolution of this entry is 2.30 Å.

Percentile scores (ranging between 0-100) for global validation metrics of the entry are shown in the following graphic. The table shows the number of entries on which the scores are based.



Metric	Whole archive (#Entries)	Similar resolution (#Entries, resolution range(Å))
Clashscore	79885	3679 (2.30-2.30)
Ramachandran outliers	78287	3642 (2.30-2.30)
Sidechain outliers	78261	3641 (2.30-2.30)

The table below summarises the geometric issues observed across the polymeric chains and their fit to the electron density. The red, orange, yellow and green segments on the lower bar indicate the fraction of residues that contain outliers for ≥ 3 , 2, 1 and 0 types of geometric quality criteria. The upper red bar (where present) indicates the fraction of residues that have poor fit to the electron density.

Note EDS was not executed.

Mol	Chain	Length	Quality of chain
1	A	265	
1	B	265	

2 Entry composition i

There are 3 unique types of molecules in this entry. The entry contains 4245 atoms, of which 0 are hydrogen and 0 are deuterium.

In the tables below, the ZeroOcc column contains the number of atoms modelled with zero occupancy, the AltConf column contains the number of residues with at least one atom in alternate conformation and the Trace column contains the number of residues modelled with at most 2 atoms.

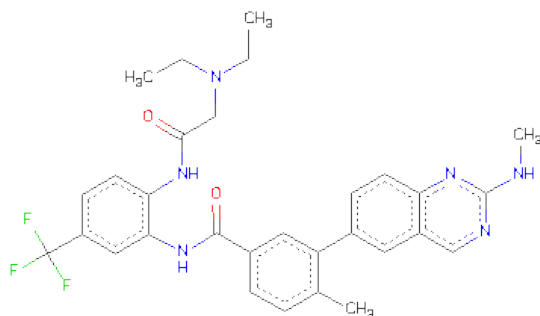
- Molecule 1 is a protein called Proto-oncogene tyrosine-protein kinase LCK.

Mol	Chain	Residues	Atoms					ZeroOcc	AltConf	Trace
1	A	246	Total	C	N	O	S	0	0	0
			1966	1264	329	361	12			
1	B	249	Total	C	N	O	S	0	0	0
			1988	1278	336	362	12			

There are 4 discrepancies between the modelled and reference sequences:

Chain	Residue	Modelled	Actual	Comment	Reference
A	236	ASP	-	CLONING ARTIFACT	UNP P06239
A	500	ALA	-	CLONING ARTIFACT	UNP P06239
B	236	ASP	-	CLONING ARTIFACT	UNP P06239
B	500	ALA	-	CLONING ARTIFACT	UNP P06239

- Molecule 2 is N-{2-[(N,N-DIETHYLGLYCYL)AMINO]-5-(TRIFLUOROMETHYL)PHENYL}-4-METHYL-3-[2-(METHYLAMINO)QUINAZOLIN-6-YL]BENZAMIDE (three-letter code: 1N8) (formula: C₃₀H₃₁F₃N₆O₂).



Mol	Chain	Residues	Atoms					ZeroOcc	AltConf
2	A	1	Total 41	C 30	F 3	N 6	O 2	0	0
2	B	1	Total 41	C 30	F 3	N 6	O 2	0	0

- Molecule 3 is water.

Mol	Chain	Residues	Atoms		ZeroOcc	AltConf
3	A	110	Total 110	O 110	2	0
3	B	99	Total 99	O 99	0	0

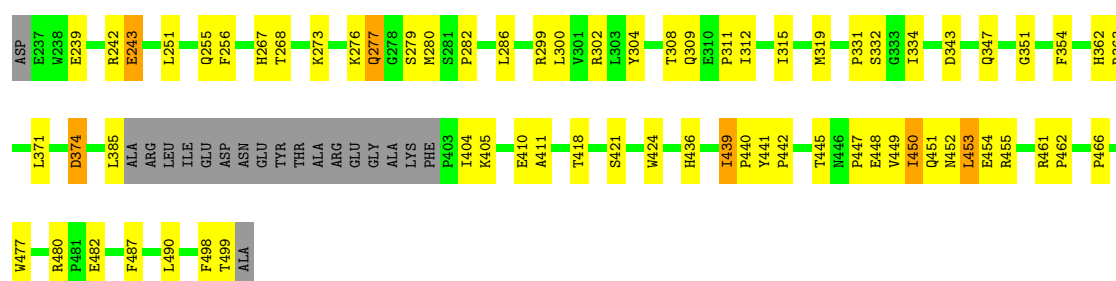
3 Residue-property plots

These plots are drawn for all protein, RNA and DNA chains in the entry. The first graphic for a chain summarises the proportions of errors displayed in the second graphic. The second graphic shows the sequence view annotated by issues in geometry and electron density. Residues are color-coded according to the number of geometric quality criteria for which they contain at least one outlier: green = 0, yellow = 1, orange = 2 and red = 3 or more. A red dot above a residue indicates a poor fit to the electron density ($RSRZ > 2$). Stretches of 2 or more consecutive residues without any outlier are shown as a green connector. Residues present in the sample, but not in the model, are shown in grey.

Note EDS was not executed.

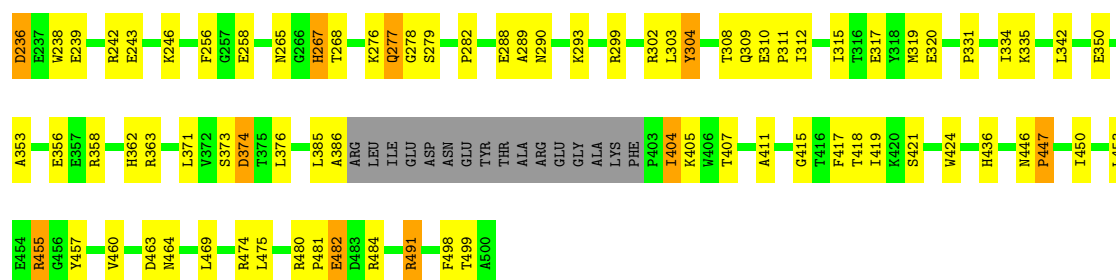
- Molecule 1: Proto-oncogene tyrosine-protein kinase LCK

Chain A: 



- Molecule 1: Proto-oncogene tyrosine-protein kinase LCK

Chain B: 



4 Data and refinement statistics

Xtriage (Phenix) and EDS were not executed - this section will therefore be incomplete.

Property	Value	Source
Space group	P 21 21 21	Depositor
Cell constants a, b, c, α , β , γ	62.69Å 80.07Å 132.06Å 90.00° 90.00° 90.00°	Depositor
Resolution (Å)	30.00 – 2.30	Depositor
% Data completeness (in resolution range)	(Not available) (30.00-2.30)	Depositor
R_{merge}	0.08	Depositor
R_{sym}	(Not available)	Depositor
Refinement program	CNS	Depositor
R, R_{free}	0.247 , 0.300	Depositor
Estimated twinning fraction	No twinning to report.	Xtriage
Total number of atoms	4245	wwPDB-VP
Average B, all atoms (Å ²)	28.0	wwPDB-VP

5 Model quality

5.1 Standard geometry

Bond lengths and bond angles in the following residue types are not validated in this section: 1N8

The Z score for a bond length (or angle) is the number of standard deviations the observed value is removed from the expected value. A bond length (or angle) with $|Z| > 5$ is considered an outlier worth inspection. RMSZ is the root-mean-square of all Z scores of the bond lengths (or angles).

Mol	Chain	Bond lengths		Bond angles	
		RMSZ	$\# Z > 5$	RMSZ	$\# Z > 5$
1	A	0.45	0/2011	0.68	1/2727 (0.0%)
1	B	0.44	0/2033	0.68	1/2754 (0.0%)
All	All	0.45	0/4044	0.68	2/5481 (0.0%)

There are no bond length outliers.

All (2) bond angle outliers are listed below:

Mol	Chain	Res	Type	Atoms	Z	Observed(°)	Ideal(°)
1	A	447	PRO	N-CA-CB	5.83	110.30	103.30
1	B	447	PRO	N-CA-CB	5.79	110.24	103.30

There are no chirality outliers.

There are no planarity outliers.

5.2 Close contacts

In the following table, the Non-H and H(model) columns list the number of non-hydrogen atoms and hydrogen atoms in the chain respectively. The H(added) column lists the number of hydrogens added by MolProbity. The Clashes column lists the number of clashes within the asymmetric unit, and the number in parentheses is this value normalized per 1000 atoms of the molecule in the chain. The Symm-Clashes column gives symmetry related clashes, in the same way as for the Clashes column.

Mol	Chain	Non-H	H(model)	H(added)	Clashes	Symm-Clashes
1	A	1966	0	1936	71	0
1	B	1988	0	1968	69	0
2	A	41	0	31	0	0
2	B	41	0	31	3	0
3	A	110	0	0	6	0

Continued on next page...

Continued from previous page...

Mol	Chain	Non-H	H(model)	H(added)	Clashes	Symm-Clashes
3	B	99	0	0	11	0
All	All	4245	0	3966	141	0

Clashscore is defined as the number of clashes calculated for the entry per 1000 atoms (including hydrogens) of the entry. The overall clashscore for this entry is 18.

All (141) close contacts within the same asymmetric unit are listed below.

Atom-1	Atom-2	Distance(Å)	Clash(Å)
1:A:242:ARG:HH21	1:A:309:GLN:NE2	1.49	1.10
1:A:242:ARG:NH2	1:A:309:GLN:HE21	1.54	1.04
1:A:404:ILE:HD12	1:A:450:ILE:HD12	1.37	1.04
1:A:319:MET:HG3	1:A:371:LEU:HB3	1.49	0.93
1:B:404:ILE:HG21	1:B:450:ILE:HD11	1.49	0.92
1:A:286:LEU:HD11	1:A:312:ILE:HG21	1.51	0.91
1:B:356:GLU:OE1	1:B:419:ILE:HG12	1.74	0.87
1:B:404:ILE:HG21	1:B:450:ILE:CD1	2.07	0.83
1:B:342:LEU:HD12	1:B:498:PHE:CE2	2.13	0.82
1:B:302:ARG:HG3	3:B:593:HOH:O	1.80	0.82
1:A:404:ILE:HD12	1:A:450:ILE:CD1	2.12	0.79
1:A:256:PHE:HD1	1:A:279:SER:OG	1.66	0.79
1:A:451:GLN:O	1:A:454:GLU:HG2	1.83	0.78
1:A:243:GLU:H	1:A:243:GLU:CD	1.88	0.75
1:B:342:LEU:HD12	1:B:498:PHE:HE2	1.55	0.70
1:B:242:ARG:NH1	1:B:311:PRO:HD2	2.07	0.70
1:B:267:HIS:H	1:B:267:HIS:CD2	2.09	0.68
1:B:304:TYR:CE2	1:B:317:GLU:HA	2.29	0.68
1:A:334:ILE:HA	1:A:436:HIS:CD2	2.29	0.67
1:B:418:THR:H	1:B:421:SER:HB3	1.59	0.66
1:B:299:ARG:NH1	3:B:541:HOH:O	2.30	0.65
1:A:256:PHE:HD1	1:A:279:SER:HG	1.44	0.64
1:B:350:GLU:HG3	1:B:491:ARG:CZ	2.28	0.64
1:B:407:THR:HG22	1:B:411:ALA:HB3	1.80	0.62
1:A:276:LYS:O	1:A:279:SER:HB3	1.99	0.62
1:A:482:GLU:CD	3:A:536:HOH:O	2.38	0.62
1:B:256:PHE:HA	1:B:279:SER:OG	1.99	0.61
1:B:342:LEU:HD21	1:B:469:LEU:HD22	1.82	0.61
1:B:436:HIS:HE1	3:B:550:HOH:O	1.82	0.61
1:A:282:PRO:O	1:A:286:LEU:HD13	2.00	0.60
1:A:273:LYS:HD3	3:A:583:HOH:O	2.00	0.60
1:A:331:PRO:O	1:A:334:ILE:HG22	2.02	0.60
1:A:334:ILE:HA	1:A:436:HIS:HD2	1.65	0.60
1:A:242:ARG:HH21	1:A:309:GLN:HE21	0.73	0.60

Continued on next page...

Continued from previous page...

Atom-1	Atom-2	Distance(Å)	Clash(Å)
1:B:335:LYS:HE3	3:B:546:HOH:O	2.01	0.59
1:A:286:LEU:HD11	1:A:312:ILE:CG2	2.29	0.59
1:A:319:MET:HG2	1:A:371:LEU:HD13	1.84	0.59
1:B:267:HIS:H	1:B:267:HIS:HD2	1.50	0.58
1:A:276:LYS:HG3	1:A:279:SER:HB2	1.85	0.58
1:A:256:PHE:HB3	1:A:280:MET:HE2	1.84	0.57
1:A:276:LYS:HG3	1:A:279:SER:CB	2.35	0.56
1:A:343:ASP:O	1:A:347:GLN:HG3	2.05	0.56
1:B:290:ASN:HB3	3:B:558:HOH:O	2.04	0.56
1:B:276:LYS:O	1:B:279:SER:CB	2.53	0.56
1:A:404:ILE:HD11	1:A:449:VAL:HB	1.87	0.56
1:A:242:ARG:NH2	1:A:309:GLN:O	2.38	0.54
1:B:386:ALA:C	3:B:568:HOH:O	2.46	0.54
1:B:417:PHE:HD2	3:B:576:HOH:O	1.91	0.54
1:A:282:PRO:HB3	1:A:312:ILE:CD1	2.38	0.53
1:B:242:ARG:HH12	1:B:311:PRO:N	2.06	0.53
1:B:288:GLU:OE1	2:B:502:1N8:H52	2.09	0.53
1:A:404:ILE:CD1	1:A:450:ILE:CD1	2.86	0.53
1:A:480:ARG:HB3	1:A:482:GLU:OE2	2.10	0.52
1:B:481:PRO:HD2	1:B:482:GLU:OE2	2.09	0.52
1:A:418:THR:H	1:A:421:SER:HB3	1.74	0.52
1:A:450:ILE:HG22	1:A:451:GLN:N	2.24	0.52
1:B:242:ARG:HH12	1:B:311:PRO:HD2	1.73	0.52
1:A:243:GLU:N	1:A:243:GLU:CD	2.58	0.52
1:A:315:ILE:N	1:A:315:ILE:HD12	2.24	0.52
1:B:242:ARG:HH12	1:B:311:PRO:CD	2.22	0.52
1:B:475:LEU:O	1:B:484:ARG:HG3	2.10	0.51
1:A:405:LYS:HG2	1:A:441:TYR:HD2	1.76	0.51
1:A:418:THR:O	1:A:421:SER:HB3	2.10	0.51
1:A:277:GLN:H	1:A:277:GLN:CD	2.14	0.51
1:A:439:ILE:HG13	1:A:440:PRO:N	2.27	0.50
1:A:251:LEU:HD22	3:A:608:HOH:O	2.09	0.50
1:B:243:GLU:H	1:B:243:GLU:CD	2.15	0.50
1:B:418:THR:O	1:B:421:SER:HB3	2.12	0.50
1:A:498:PHE:O	1:A:499:THR:C	2.49	0.49
1:A:487:PHE:HA	1:A:490:LEU:HD12	1.93	0.49
1:A:404:ILE:CG1	1:A:405:LYS:N	2.75	0.49
1:B:319:MET:HG3	1:B:371:LEU:HB3	1.95	0.49
1:A:319:MET:CG	1:A:371:LEU:HD13	2.43	0.49
1:B:236:ASP:OD1	1:B:236:ASP:C	2.52	0.48
1:A:319:MET:HG3	1:A:371:LEU:CB	2.32	0.48
1:B:331:PRO:O	1:B:335:LYS:HE2	2.14	0.48

Continued on next page...

Continued from previous page...

Atom-1	Atom-2	Distance(Å)	Clash(Å)
1:B:282:PRO:HB3	1:B:312:ILE:HD11	1.95	0.48
1:B:303:LEU:HD12	1:B:315:ILE:O	2.14	0.48
1:A:410:GLU:HG2	1:A:411:ALA:N	2.29	0.47
1:B:236:ASP:OD1	1:B:238:TRP:N	2.46	0.47
1:A:242:ARG:CZ	1:A:311:PRO:HD2	2.44	0.47
1:B:256:PHE:CD1	1:B:279:SER:OG	2.67	0.47
1:B:320:GLU:HG2	1:B:374:ASP:OD2	2.14	0.47
1:A:256:PHE:C	1:A:276:LYS:HG2	2.35	0.47
1:A:239:GLU:OE1	1:A:308:THR:HG23	2.15	0.47
1:B:288:GLU:CD	2:B:502:1N8:H52	2.35	0.46
1:A:256:PHE:CG	1:A:280:MET:HE2	2.51	0.46
1:A:302:ARG:HB2	3:A:527:HOH:O	2.15	0.46
1:B:446:ASN:O	1:B:450:ILE:HD13	2.15	0.46
1:A:276:LYS:HE2	1:A:276:LYS:HB2	1.58	0.46
1:B:256:PHE:HD1	1:B:279:SER:HG	1.58	0.46
1:A:267:HIS:CD2	1:A:268:THR:OG1	2.68	0.46
1:A:267:HIS:HD2	1:A:268:THR:OG1	1.99	0.46
1:B:238:TRP:HZ3	1:B:303:LEU:O	1.99	0.45
1:B:315:ILE:HD12	1:B:315:ILE:N	2.31	0.45
1:A:445:THR:OG1	1:A:448:GLU:HG3	2.16	0.45
1:A:441:TYR:N	1:A:442:PRO:HD3	2.31	0.45
1:B:424:TRP:CD1	1:B:424:TRP:C	2.89	0.45
1:B:474:ARG:HD2	1:B:474:ARG:HA	1.81	0.45
1:B:362:HIS:O	1:B:363:ARG:HB2	2.17	0.45
1:B:310:GLU:HA	1:B:311:PRO:C	2.38	0.44
1:B:276:LYS:O	1:B:279:SER:HB2	2.16	0.44
1:B:404:ILE:HG21	1:B:450:ILE:HD12	1.94	0.44
1:B:455:ARG:HE	1:B:455:ARG:HB2	1.44	0.44
1:A:448:GLU:O	1:A:452:ASN:OD1	2.36	0.44
1:B:460:VAL:HG22	3:B:527:HOH:O	2.17	0.44
1:B:277:GLN:HE22	1:B:310:GLU:CD	2.20	0.44
1:A:267:HIS:HE1	3:B:512:HOH:O	2.00	0.44
1:B:404:ILE:CG1	1:B:446:ASN:HB3	2.48	0.44
1:A:453:LEU:C	1:A:455:ARG:H	2.21	0.44
1:B:243:GLU:N	1:B:243:GLU:CD	2.71	0.43
1:A:461:ARG:HA	1:A:462:PRO:HD3	1.87	0.43
1:A:286:LEU:CD1	1:A:312:ILE:HG21	2.36	0.43
1:B:242:ARG:NH2	1:B:309:GLN:O	2.49	0.43
1:A:276:LYS:O	1:A:279:SER:CB	2.66	0.43
1:B:276:LYS:O	1:B:279:SER:HB3	2.19	0.43
1:B:482:GLU:CD	1:B:482:GLU:H	2.21	0.43
1:B:457:TYR:HA	3:B:510:HOH:O	2.18	0.43

Continued on next page...

Continued from previous page...

Atom-1	Atom-2	Distance(Å)	Clash(Å)
1:A:374:ASP:OD1	1:A:374:ASP:N	2.51	0.43
1:B:418:THR:H	1:B:421:SER:CB	2.28	0.43
1:B:239:GLU:OE1	1:B:308:THR:HG23	2.19	0.43
1:B:353:ALA:O	1:B:356:GLU:HB3	2.20	0.42
1:B:319:MET:HE3	1:B:373:SER:N	2.35	0.42
1:B:265:ASN:HA	1:B:265:ASN:HD22	1.69	0.42
2:B:502:1N8:H51	3:B:557:HOH:O	2.19	0.41
1:A:309:GLN:O	1:A:309:GLN:HG3	2.20	0.41
1:B:277:GLN:HG3	1:B:278:GLY:N	2.36	0.41
1:A:424:TRP:CE3	1:A:477:TRP:HA	2.56	0.41
1:A:466:PRO:HG3	3:A:610:HOH:O	2.21	0.41
1:B:411:ALA:O	1:B:415:GLY:HA2	2.21	0.41
1:A:453:LEU:HA	1:A:453:LEU:HD12	1.93	0.41
1:A:351:GLY:O	1:A:354:PHE:HB3	2.20	0.41
1:A:256:PHE:HB3	1:A:280:MET:CE	2.48	0.41
1:B:267:HIS:CG	1:B:268:THR:H	2.39	0.41
1:A:299:ARG:C	1:A:300:LEU:HD12	2.41	0.41
1:A:439:ILE:HG22	3:A:524:HOH:O	2.20	0.41
1:A:418:THR:H	1:A:421:SER:CB	2.35	0.40
1:A:362:HIS:O	1:A:363:ARG:HB2	2.22	0.40
1:B:480:ARG:HA	1:B:481:PRO:HD3	1.93	0.40
1:B:463:ASP:O	1:B:464:ASN:HB2	2.21	0.40
1:B:289:ALA:O	1:B:293:LYS:HG3	2.22	0.40

There are no symmetry-related clashes.

5.3 Torsion angles

5.3.1 Protein backbone ⓘ

In the following table, the Percentiles column shows the percent Ramachandran outliers of the chain as a percentile score with respect to all X-ray entries followed by that with respect to entries of similar resolution. The Analysed column shows the number of residues for which the backbone conformation was analysed, and the total number of residues.

Mol	Chain	Analysed	Favoured	Allowed	Outliers	Percentiles	
1	A	242/265 (91%)	234 (97%)	8 (3%)	0	100	100
1	B	245/265 (92%)	228 (93%)	14 (6%)	3 (1%)	19	19
All	All	487/530 (92%)	462 (95%)	22 (4%)	3 (1%)	33	39

All (3) Ramachandran outliers are listed below:

Mol	Chain	Res	Type
1	B	405	LYS
1	B	499	THR
1	B	447	PRO

5.3.2 Protein sidechains ⓘ

In the following table, the Percentiles column shows the percent sidechain outliers of the chain as a percentile score with respect to all X-ray entries followed by that with respect to entries of similar resolution. The Analysed column shows the number of residues for which the sidechain conformation was analysed, and the total number of residues.

Mol	Chain	Analysed	Rotameric	Outliers	Percentiles	
1	A	209/230 (91%)	199 (95%)	10 (5%)	35	46
1	B	210/230 (91%)	194 (92%)	16 (8%)	19	22
All	All	419/460 (91%)	393 (94%)	26 (6%)	26	33

All (26) residues with a non-rotameric sidechain are listed below:

Mol	Chain	Res	Type
1	A	243	GLU
1	A	255	GLN
1	A	277	GLN
1	A	304	TYR
1	A	332	SER
1	A	374	ASP
1	A	385	LEU
1	A	439	ILE
1	A	450	ILE
1	A	453	LEU
1	B	236	ASP
1	B	246	LYS
1	B	258	GLU
1	B	267	HIS
1	B	277	GLN
1	B	304	TYR
1	B	334	ILE
1	B	358	ARG
1	B	374	ASP
1	B	376	LEU
1	B	385	LEU
1	B	404	ILE
1	B	453	LEU

Continued on next page...

Continued from previous page...

Mol	Chain	Res	Type
1	B	455	ARG
1	B	482	GLU
1	B	491	ARG

Some sidechains can be flipped to improve hydrogen bonding and reduce clashes. All (12) such sidechains are listed below:

Mol	Chain	Res	Type
1	A	255	GLN
1	A	265	ASN
1	A	267	HIS
1	A	296	GLN
1	A	309	GLN
1	A	436	HIS
1	B	265	ASN
1	B	277	GLN
1	B	298	GLN
1	B	436	HIS
1	B	451	GLN
1	B	452	ASN

5.3.3 RNA ⓘ

There are no RNA chains in this entry.

5.4 Non-standard residues in protein, DNA, RNA chains ⓘ

There are no non-standard protein/DNA/RNA residues in this entry.

5.5 Carbohydrates ⓘ

There are no carbohydrates in this entry.

5.6 Ligand geometry ⓘ

2 ligands are modelled in this entry.

In the following table, the Counts columns list the number of bonds (or angles) for which Mogul statistics could be retrieved, the number of bonds (or angles) that are observed in the model and the number of bonds (or angles) that are defined in the chemical component dictionary. The Link

column lists molecule types, if any, to which the group is linked. The Z score for a bond length (or angle) is the number of standard deviations the observed value is removed from the expected value. A bond length (or angle) with $|Z| > 2$ is considered an outlier worth inspection. RMSZ is the root-mean-square of all Z scores of the bond lengths (or angles).

Mol	Type	Chain	Res	Link	Bond lengths			Bond angles		
					Counts	RMSZ	$\# Z > 2$	Counts	RMSZ	$\# Z > 2$
2	1N8	A	501	-	44,44,44	2.52	18 (40%)	63,63,63	2.12	16 (25%)
2	1N8	B	502	-	44,44,44	2.40	18 (40%)	63,63,63	2.01	13 (20%)

In the following table, the Chirals column lists the number of chiral outliers, the number of chiral centers analysed, the number of these observed in the model and the number defined in the chemical component dictionary. Similar counts are reported in the Torsion and Rings columns. '-' means no outliers of that kind were identified.

Mol	Type	Chain	Res	Link	Chirals	Torsions	Rings
2	1N8	A	501	-	-	0/32/32/32	0/2/4/4
2	1N8	B	502	-	-	0/32/32/32	0/2/4/4

All (36) bond length outliers are listed below:

Mol	Chain	Res	Type	Atoms	Z	Observed(Å)	Ideal(Å)
2	A	501	1N8	C3-C4	6.38	1.51	1.42
2	B	502	1N8	C3-C4	5.90	1.51	1.42
2	B	502	1N8	C10-C9	5.44	1.48	1.36
2	A	501	1N8	C10-C9	5.34	1.48	1.36
2	A	501	1N8	C18-C17	5.30	1.47	1.39
2	B	502	1N8	C18-C17	4.32	1.46	1.39
2	A	501	1N8	C9-C8	4.10	1.48	1.39
2	A	501	1N8	C12-C11	4.04	1.45	1.39
2	B	502	1N8	C9-C8	3.98	1.47	1.39
2	B	502	1N8	C12-C11	3.97	1.45	1.39
2	A	501	1N8	C16-C17	3.95	1.46	1.39
2	B	502	1N8	C7-C8	3.94	1.47	1.38
2	A	501	1N8	C12-C13	3.80	1.45	1.39
2	A	501	1N8	C7-C8	3.78	1.47	1.38
2	A	501	1N8	C19-C20	3.58	1.46	1.39
2	B	502	1N8	C23-C11	3.50	1.45	1.39
2	A	501	1N8	C15-N3	-3.48	1.34	1.41
2	B	502	1N8	C16-C17	3.38	1.45	1.39
2	B	502	1N8	C15-N3	-3.32	1.35	1.41
2	B	502	1N8	C16-C15	3.23	1.44	1.39
2	B	502	1N8	C21-C17	3.18	1.57	1.49
2	B	502	1N8	C19-C20	3.14	1.45	1.39

Continued on next page...

Continued from previous page...

Mol	Chain	Res	Type	Atoms	Z	Observed(Å)	Ideal(Å)
2	A	501	1N8	C23-C11	3.11	1.44	1.39
2	A	501	1N8	C21-C17	3.04	1.57	1.49
2	B	502	1N8	C12-C13	2.89	1.44	1.39
2	A	501	1N8	C23-C22	2.87	1.44	1.38
2	A	501	1N8	C22-C24	2.85	1.46	1.39
2	A	501	1N8	C2-N1	2.79	1.35	1.31
2	B	502	1N8	C2-N1	2.75	1.35	1.31
2	A	501	1N8	C20-N4	-2.73	1.36	1.41
2	B	502	1N8	C23-C22	2.72	1.44	1.38
2	A	501	1N8	C10-C4	2.70	1.46	1.41
2	B	502	1N8	C22-C24	2.42	1.45	1.39
2	B	502	1N8	C10-C4	2.28	1.46	1.41
2	A	501	1N8	C18-C19	2.01	1.42	1.38
2	B	502	1N8	C13-C24	2.01	1.44	1.40

All (29) bond angle outliers are listed below:

Mol	Chain	Res	Type	Atoms	Z	Observed(°)	Ideal(°)
2	A	501	1N8	C12-C13-C24	-7.33	115.14	119.10
2	A	501	1N8	C22-C24-C13	6.50	124.56	118.26
2	B	502	1N8	C22-C24-C13	6.21	124.28	118.26
2	B	502	1N8	N2-C6-N5	5.82	123.70	116.94
2	B	502	1N8	C12-C13-C24	-5.71	116.01	119.10
2	B	502	1N8	N1-C6-N5	-5.43	121.64	126.62
2	A	501	1N8	N1-C6-N5	-5.14	121.90	126.62
2	A	501	1N8	C19-C20-C15	4.84	123.94	119.42
2	A	501	1N8	N2-C6-N5	3.62	121.14	116.94
2	B	502	1N8	C2-N1-C6	3.47	122.56	116.03
2	A	501	1N8	C10-C4-N5	3.46	124.26	118.71
2	A	501	1N8	C15-C20-N4	-3.44	113.35	119.77
2	B	502	1N8	C22-C23-C11	-3.39	116.71	120.76
2	A	501	1N8	C2-N1-C6	3.13	121.92	116.03
2	B	502	1N8	C23-C11-C12	3.08	123.12	119.24
2	B	502	1N8	C25-C24-C22	-3.08	113.82	120.33
2	B	502	1N8	C19-C20-C15	3.07	122.29	119.42
2	B	502	1N8	C15-C16-C17	-2.92	117.03	120.91
2	A	501	1N8	C7-C8-C13	-2.79	117.47	121.17
2	A	501	1N8	C25-C24-C22	-2.78	114.46	120.33
2	B	502	1N8	C10-C4-N5	2.67	122.99	118.71
2	A	501	1N8	C3-C4-N5	-2.62	117.21	122.20
2	A	501	1N8	C15-C16-C17	-2.61	117.44	120.91
2	A	501	1N8	C22-C23-C11	-2.37	117.93	120.76

Continued on next page...

Continued from previous page...

Mol	Chain	Res	Type	Atoms	Z	Observed(°)	Ideal(°)
2	A	501	1N8	C9-C8-C13	2.31	124.52	120.92
2	A	501	1N8	C18-C17-C16	2.13	121.69	117.59
2	A	501	1N8	C23-C22-C24	-2.09	119.05	122.02
2	B	502	1N8	N2-C6-N1	-2.05	114.64	117.02
2	B	502	1N8	C3-C2-N1	-2.00	120.16	123.83

There are no chirality outliers.

There are no torsion outliers.

There are no ring outliers.

5.7 Other polymers ⓘ

There are no such residues in this entry.

5.8 Polymer linkage issues

There are no chain breaks in this entry.

6 Fit of model and data ⓘ

6.1 Protein, DNA and RNA chains ⓘ

EDS was not executed - this section will therefore be empty.

6.2 Non-standard residues in protein, DNA, RNA chains ⓘ

EDS was not executed - this section will therefore be empty.

6.3 Carbohydrates ⓘ

EDS was not executed - this section will therefore be empty.

6.4 Ligands ⓘ

EDS was not executed - this section will therefore be empty.

6.5 Other polymers ⓘ

EDS was not executed - this section will therefore be empty.