



wwPDB X-ray Structure Validation Summary Report

Feb 28, 2014 – 09:34 AM GMT

PDB ID : 2OGM
Title : The crystal structure of the large ribosomal subunit from *Deinococcus radiodurans* complexed with the pleuromutilin derivative SB-571519
Authors : Davidovich, C.; Bashan, A.; Auerbach-Nevo, T.; Yonath, A.
Deposited on : 2007-01-07
Resolution : 3.50 Å(reported)

This is a wwPDB validation summary report for a publicly released PDB entry.

We welcome your comments at validation@mail.wwpdb.org

A user guide is available at <http://wwpdb.org/ValidationPDFNotes.html>

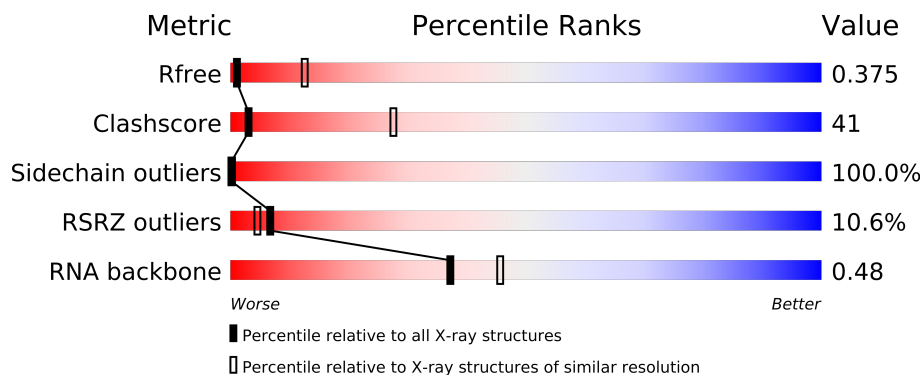
The following versions of software and data (see [references](#)) were used in the production of this report:

MolProbity	:	4.02b-467
Mogul	:	1.15 2013
Xtriage (Phenix)	:	dev-1323
EDS	:	stable22639
Percentile statistics	:	21963
Refmac	:	5.8.0049
CCP4	:	6.3.0 (Settle)
Ideal geometry (proteins)	:	Engh & Huber (2001)
Ideal geometry (DNA, RNA)	:	Parkinson et. al. (1996)
Validation Pipeline (wwPDB-VP)	:	stable22683

1 Overall quality at a glance

The reported resolution of this entry is 3.50 Å.

Percentile scores (ranging between 0-100) for global validation metrics of the entry are shown in the following graphic. The table shows the number of entries on which the scores are based.



Metric	Whole archive (#Entries)	Similar resolution (#Entries, resolution range(Å))
R_{free}	66092	1243 (3.70-3.30)
Clashscore	79885	1039 (3.66-3.34)
Sidechain outliers	78261	1000 (3.66-3.34)
RSRZ outliers	66119	1243 (3.70-3.30)
RNA backbone	1838	1007 (4.22-2.76)

The table below summarises the geometric issues observed across the polymeric chains and their fit to the electron density. The red, orange, yellow and green segments on the lower bar indicate the fraction of residues that contain outliers for ≥ 3 , 2, 1 and 0 types of geometric quality criteria. The upper red bar (where present) indicates the fraction of residues that have poor fit to the electron density.

Mol	Chain	Length	Quality of chain
1	0	2880	
2	B	211	

2 Entry composition i

There are 3 unique types of molecules in this entry. The entry contains 59610 atoms, of which 0 are hydrogen and 0 are deuterium.

In the tables below, the ZeroOcc column contains the number of atoms modelled with zero occupancy, the AltConf column contains the number of residues with at least one atom in alternate conformation and the Trace column contains the number of residues modelled with at most 2 atoms.

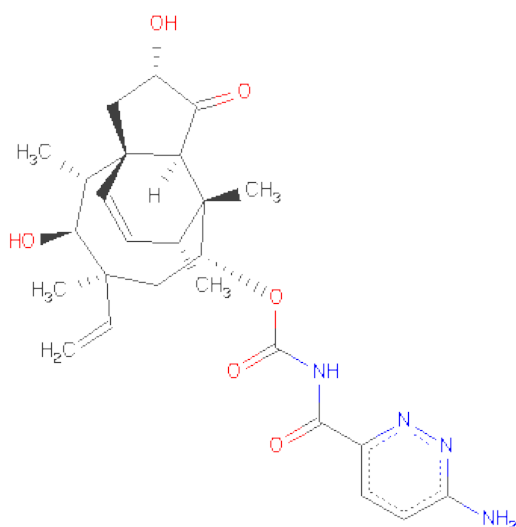
- Molecule 1 is a RNA chain called 23S ribosomal RNA.

Mol	Chain	Residues	Atoms					ZeroOcc	AltConf	Trace
			Total	C	N	O	P			
1	0	2766	59359	26479	10949	19166	2765	0	0	0

- Molecule 2 is a protein called 50S ribosomal protein L3.

Mol	Chain	Residues	Atoms				ZeroOcc	AltConf	Trace
			Total	C	N	O			
2	B	205	215	210	4	1	0	0	204

- Molecule 3 is (2S,3AR,4R,5S,6S,8R,9R,9AR,10R)-2,5-DIHYDROXY-4,6,9,10-TETRAMETHYL-1-OXO-6-VINYLDECAHYDRO-3A,9-PROP[1]ENOCYCLOPENTA[8]ANNULEN-8-YL[(6-AMINOPYRIDAZIN-3-YL)CARBONYL]CARBAMATE (three-letter code: G19) (formula: C₂₆H₃₄N₄O₆).

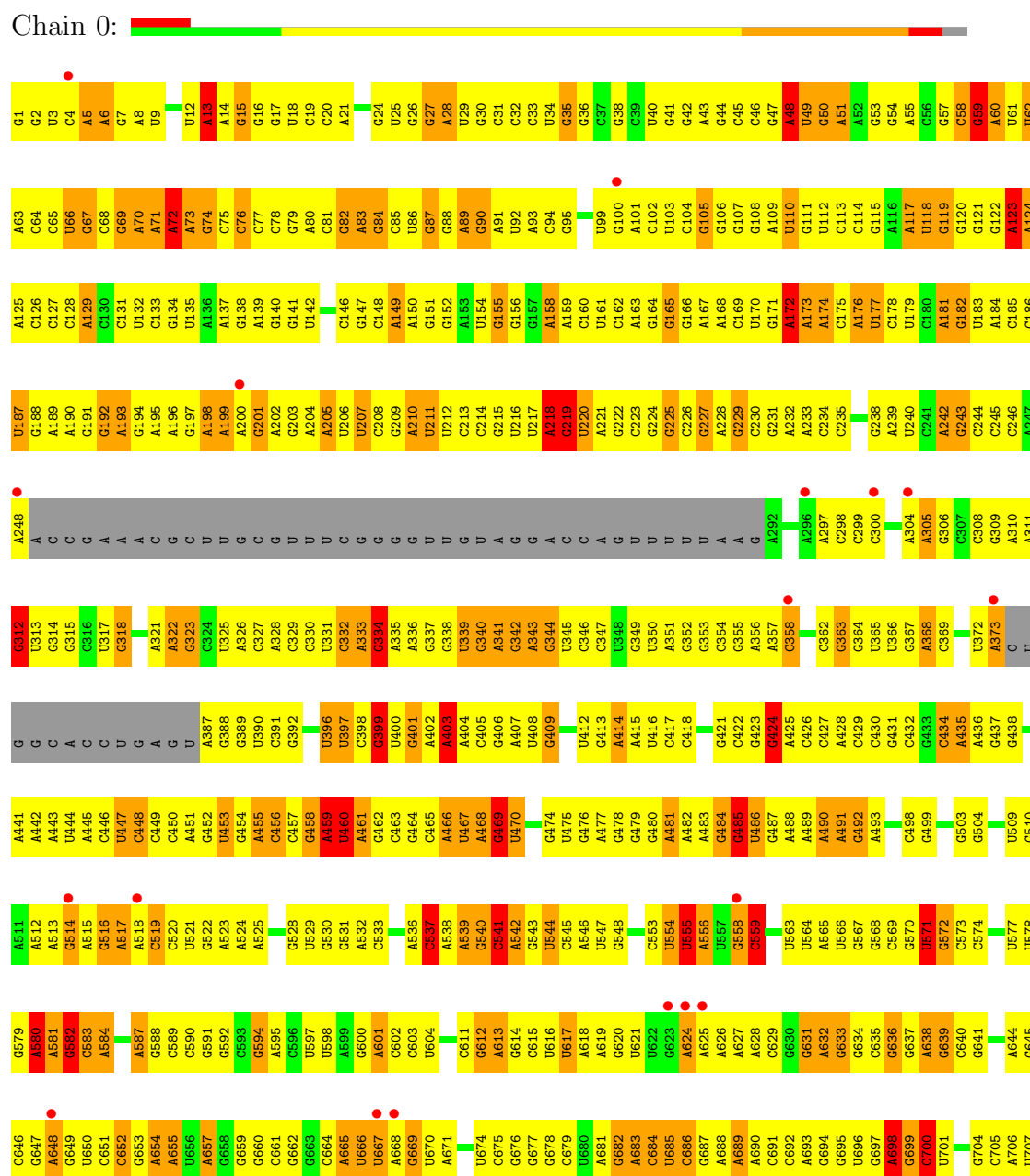


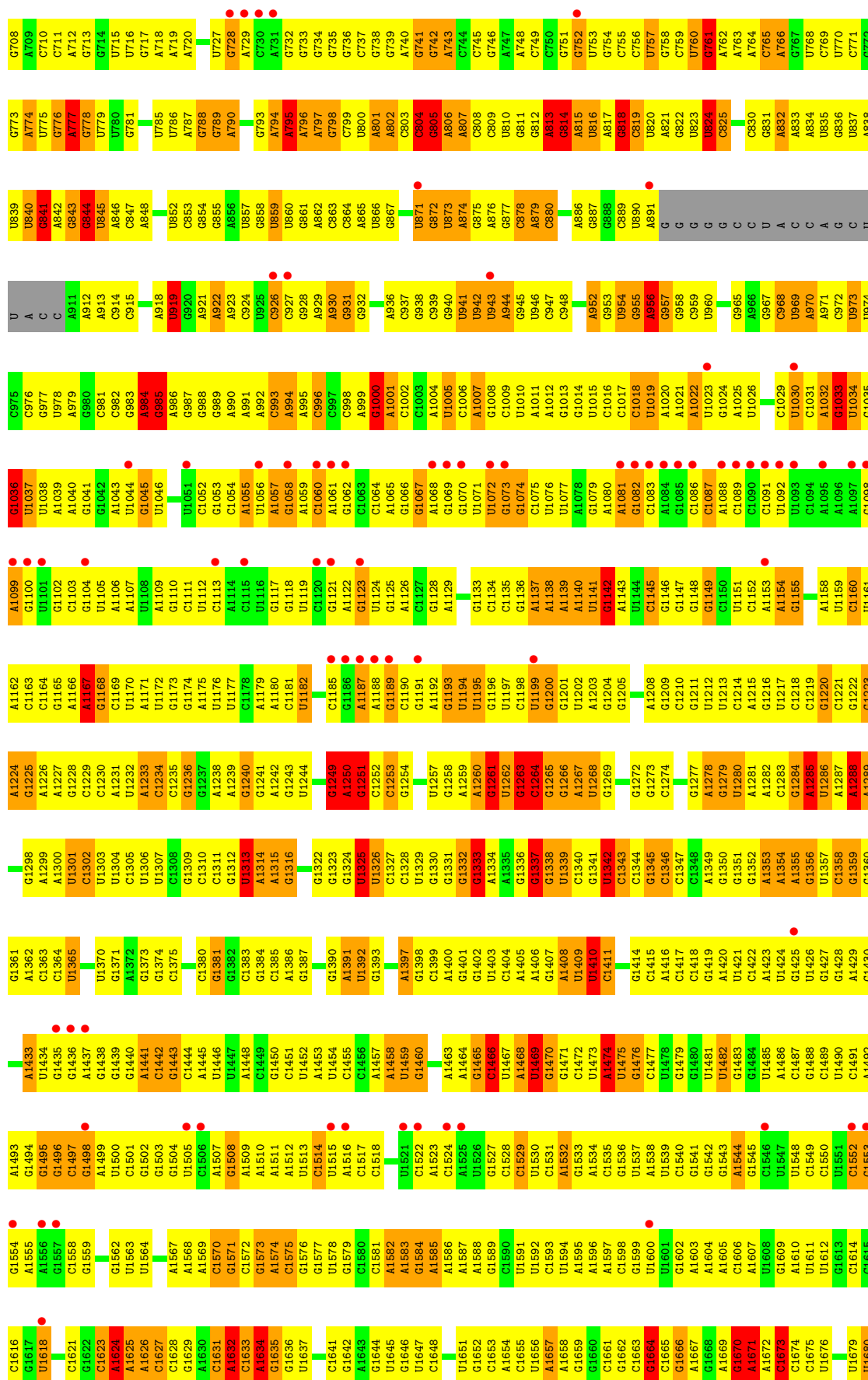
Mol	Chain	Residues	Atoms				ZeroOcc	AltConf
			Total	C	N	O		
3	0	1	36	26	4	6	0	0

3 Residue-property plots

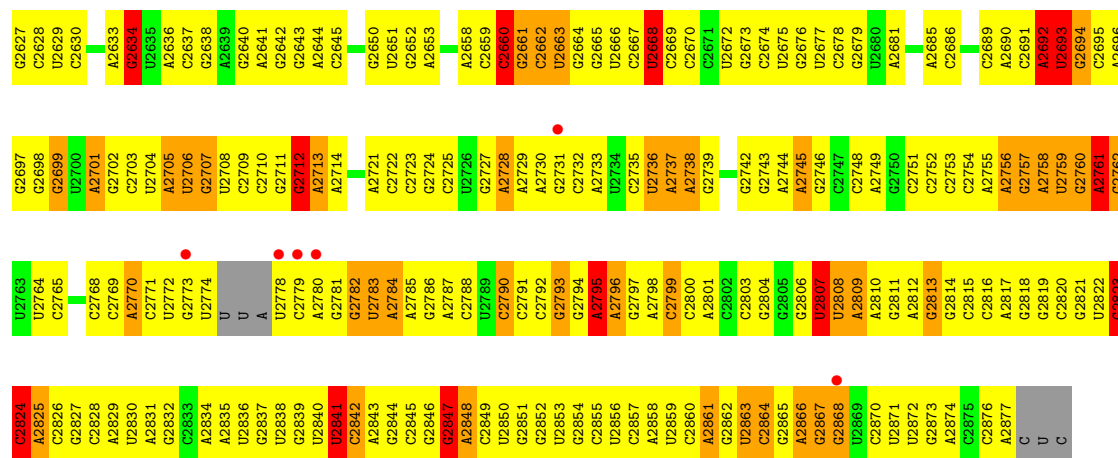
These plots are drawn for all protein, RNA and DNA chains in the entry. The first graphic for a chain summarises the proportions of errors displayed in the second graphic. The second graphic shows the sequence view annotated by issues in geometry and electron density. Residues are color-coded according to the number of geometric quality criteria for which they contain at least one outlier: green = 0, yellow = 1, orange = 2 and red = 3 or more. A red dot above a residue indicates a poor fit to the electron density ($RSRZ > 2$). Stretches of 2 or more consecutive residues without any outlier are shown as a green connector. Residues present in the sample, but not in the model, are shown in grey.

• Molecule 1: 23S ribosomal RNA



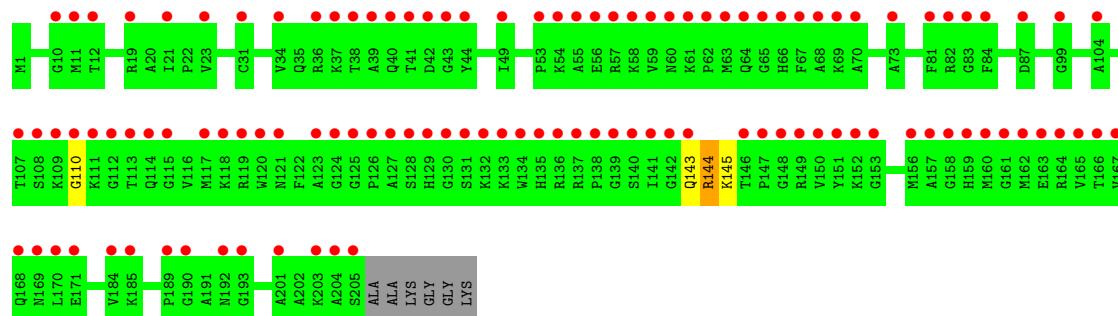






• Molecule 2: 50S ribosomal protein L3

Chain B:



4 Data and refinement statistics

Property	Value	Source
Space group	I 2 2 2	Depositor
Cell constants a, b, c, α , β , γ	170.40Å 405.83Å 703.80Å 90.00° 90.00° 90.00°	Depositor
Resolution (Å)	29.93 – 3.50 29.92 – 3.50	Depositor EDS
% Data completeness (in resolution range)	(Not available) (29.93-3.50) 92.8 (29.92-3.50)	Depositor EDS
R_{merge}	0.18	Depositor
R_{sym}	(Not available)	Depositor
$\langle I/\sigma(I) \rangle$ ¹	1.92 (at 3.47Å)	Xtriage
Refinement program	CNS 1.1	Depositor
R, R_{free}	0.275 , 0.334 0.356 , 0.375	Depositor DCC
R_{free} test set	14026 reflections (4.97%)	DCC
Wilson B-factor (Å ²)	86.3	Xtriage
Anisotropy	0.807	Xtriage
Bulk solvent k_{sol} (e/Å ³), B_{sol} (Å ²)	0.21 , 49.4	EDS
Estimated twinning fraction	No twinning to report.	Xtriage
L-test for twinning	$\langle L \rangle = 0.45$, $\langle L^2 \rangle = 0.28$	Xtriage
Outliers	0 of 282308 reflections	Xtriage
F_o, F_c correlation	0.78	EDS
Total number of atoms	59610	wwPDB-VP
Average B, all atoms (Å ²)	86.0	wwPDB-VP

Xtriage's analysis on translational NCS is as follows: *The largest off-origin peak in the Patterson function is 2.31% of the height of the origin peak. No significant pseudotranslation is detected.*

¹Intensities estimated from amplitudes.

5 Model quality

5.1 Standard geometry

Bond lengths and bond angles in the following residue types are not validated in this section: G19

The Z score for a bond length (or angle) is the number of standard deviations the observed value is removed from the expected value. A bond length (or angle) with $|Z| > 5$ is considered an outlier worth inspection. RMSZ is the root-mean-square of all Z scores of the bond lengths (or angles).

Mol	Chain	Bond lengths		Bond angles	
		RMSZ	# $ Z > 5$	RMSZ	# $ Z > 5$
1	0	0.61	6/66467 (0.0%)	0.82	100/103673 (0.1%)
2	B	0.11	0/10	0.42	0/11
All	All	0.61	6/66477 (0.0%)	0.82	100/103684 (0.1%)

Chiral center outliers are detected by calculating the chiral volume of a chiral center and verifying if the center is modelled as a planar moiety or with the opposite hand. A planarity outlier is detected by checking planarity of atoms in a peptide group, atoms in a mainchain group or atoms of a sidechain that are expected to be planar.

Mol	Chain	#Chirality outliers	#Planarity outliers
1	0	0	121

The worst 5 of 6 bond length outliers are listed below:

Mol	Chain	Res	Type	Atoms	Z	Observed(Å)	Ideal(Å)
1	0	700	C	N1-C2	9.14	1.49	1.40
1	0	788	G	N9-C4	7.37	1.43	1.38
1	0	1664	G	N9-C4	-5.84	1.33	1.38
1	0	1681	A	C5-C6	-5.47	1.36	1.41
1	0	2799	C	N1-C2	-5.33	1.34	1.40

The worst 5 of 100 bond angle outliers are listed below:

Mol	Chain	Res	Type	Atoms	Z	Observed(°)	Ideal(°)
1	0	985	G	N9-C1'-C2'	11.62	129.11	114.00
1	0	460	U	N1-C1'-C2'	10.14	127.18	114.00
1	0	1264	C	N1-C1'-C2'	10.06	127.08	114.00
1	0	788	G	N9-C1'-C2'	10.03	127.04	114.00
1	0	984	A	N9-C1'-C2'	9.21	125.98	114.00

There are no chirality outliers.

5 of 121 planarity outliers are listed below:

Mol	Chain	Res	Type	Group
1	0	13	A	Sidechain
1	0	15	G	Sidechain
1	0	48	A	Sidechain
1	0	67	G	Sidechain
1	0	82	G	Sidechain

5.2 Close contacts ⓘ

In the following table, the Non-H and H(model) columns list the number of non-hydrogen atoms and hydrogen atoms in the chain respectively. The H(added) column lists the number of hydrogens added by MolProbity. The Clashes column lists the number of clashes within the asymmetric unit, and the number in parentheses is this value normalized per 1000 atoms of the molecule in the chain. The Symm-Clashes column gives symmetry related clashes, in the same way as for the Clashes column.

Mol	Chain	Non-H	H(model)	H(added)	Clashes	Symm-Clashes
1	0	59359	0	29917	3642	0
2	B	215	0	12	5	0
3	0	36	0	34	2	0
All	All	59610	0	29963	3646	0

Clashscore is defined as the number of clashes calculated for the entry per 1000 atoms (including hydrogens) of the entry. The overall clashscore for this entry is 41.

The worst 5 of 3646 close contacts within the same asymmetric unit are listed below.

Atom-1	Atom-2	Distance(Å)	Clash(Å)
1:0:1280:U:C5	1:0:1995:G:C2	2.04	1.44
1:0:1440:G:H3'	1:0:1441:A:C5'	1.66	1.25
1:0:699:G:N2	1:0:801:A:H2	1.40	1.18
1:0:1440:G:C3'	1:0:1441:A:H5''	1.75	1.16
1:0:2205:C:O2'	1:0:2206:C:H5'	1.42	1.16

There are no symmetry-related clashes.

5.3 Torsion angles

5.3.1 Protein backbone ⓘ

There are no protein backbone outliers to report in this entry.

5.3.2 Protein sidechains ⓘ

In the following table, the Percentiles column shows the percent sidechain outliers of the chain as a percentile score with respect to all X-ray entries followed by that with respect to entries of similar resolution. The Analysed column shows the number of residues for which the sidechain conformation was analysed, and the total number of residues.

Mol	Chain	Analysed	Rotameric	Outliers	Percentiles
2	B	1/157 (1%)	0	1 (100%)	0 0

All (1) residues with a non-rotameric sidechain are listed below:

Mol	Chain	Res	Type
2	B	144	ARG

Some sidechains can be flipped to improve hydrogen bonding and reduce clashes. There are no such sidechains identified.

5.3.3 RNA ⓘ

Mol	Chain	Analysed	Backbone Outliers	Pucker Outliers
1	0	2757/2880 (95%)	618 (22%)	184 (6%)

5 of 618 RNA backbone outliers are listed below:

Mol	Chain	Res	Type
1	0	5	A
1	0	6	A
1	0	13	A
1	0	28	A
1	0	35	G

5 of 184 RNA pucker outliers are listed below:

Mol	Chain	Res	Type
1	0	1263	G
1	0	1474	A
1	0	2594	U
1	0	1265	G
1	0	1325	U

5.4 Non-standard residues in protein, DNA, RNA chains ⓘ

There are no non-standard protein/DNA/RNA residues in this entry.

5.5 Carbohydrates ⓘ

There are no carbohydrates in this entry.

5.6 Ligand geometry ⓘ

1 ligand is modelled in this entry.

In the following table, the Counts columns list the number of bonds (or angles) for which Mogul statistics could be retrieved, the number of bonds (or angles) that are observed in the model and the number of bonds (or angles) that are defined in the chemical component dictionary. The Link column lists molecule types, if any, to which the group is linked. The Z score for a bond length (or angle) is the number of standard deviations the observed value is removed from the expected value. A bond length (or angle) with $|Z| > 2$ is considered an outlier worth inspection. RMSZ is the root-mean-square of all Z scores of the bond lengths (or angles).

Mol	Type	Chain	Res	Link	Bond lengths			Bond angles		
					Counts	RMSZ	$\# Z > 2$	Counts	RMSZ	$\# Z > 2$
3	G19	0	2881	-	39,39,39	3.75	14 (35%)	61,62,62	2.16	17 (27%)

In the following table, the Chirals column lists the number of chiral outliers, the number of chiral centers analysed, the number of these observed in the model and the number defined in the chemical component dictionary. Similar counts are reported in the Torsion and Rings columns. '-' means no outliers of that kind were identified.

Mol	Type	Chain	Res	Link	Chirals	Torsions	Rings
3	G19	0	2881	-	-	1/15/79/79	0/1/4/4

The worst 5 of 14 bond length outliers are listed below:

Mol	Chain	Res	Type	Atoms	Z	Observed(Å)	Ideal(Å)
3	0	2881	G19	C7-C8	18.49	1.58	1.32
3	0	2881	G19	O3-C21	5.70	1.45	1.35
3	0	2881	G19	C12-C11	5.59	1.64	1.55
3	0	2881	G19	C10-C11	4.72	1.63	1.55
3	0	2881	G19	C5-C6	4.00	1.62	1.56

The worst 5 of 17 bond angle outliers are listed below:

Mol	Chain	Res	Type	Atoms	Z	Observed(°)	Ideal(°)
3	0	2881	G19	O3-C21-N1	6.66	117.46	107.85
3	0	2881	G19	C18-C12-C11	6.04	113.29	107.43
3	0	2881	G19	C6-C7-C8	-5.37	115.16	124.74
3	0	2881	G19	O3-C21-O4	-5.07	116.49	124.46
3	0	2881	G19	C14-O3-C21	4.48	123.79	116.77

There are no chirality outliers.

All (1) torsion outliers are listed below:

Mol	Chain	Res	Type	Atoms
3	0	2881	G19	C20-C19-C12-C13

There are no ring outliers.

5.7 Other polymers ⓘ

There are no such residues in this entry.

5.8 Polymer linkage issues

There are no chain breaks in this entry.

6 Fit of model and data ⓘ

6.1 Protein, DNA and RNA chains ⓘ

In the following table, the column labelled ‘#RSRZ> 2’ contains the number (and percentage) of RSRZ outliers, followed by percent RSRZ outliers for the chain as percentile scores relative to all X-ray entries and entries of similar resolution. The OWAB column contains the minimum, median, 95th percentile and maximum values of the occupancy-weighted average B-factor per residue. The column labelled ‘Q< 0.9’ lists the number of (and percentage) of residues with an average occupancy less than 0.9.

Mol	Chain	Analysed	<RSRZ>	#RSRZ>2	OWAB(Å ²)	Q<0.9
1	0	2766/2880 (96%)	0.27	202 (7%) 15 7	9, 69, 200, 200	0
2	B	205/211 (97%)	2.41	113 (55%) 0 1	4, 52, 147, 201	0
All	All	2971/3091 (96%)	0.41	315 (10%) 7 4	4, 67, 200, 201	0

The worst 5 of 315 RSRZ outliers are listed below:

Mol	Chain	Res	Type	RSRZ
1	0	558	G	10.5
2	B	129	HIS	10.2
1	0	1090	C	7.9
1	0	2140	G	7.6
1	0	2168	A	7.0

6.2 Non-standard residues in protein, DNA, RNA chains ⓘ

There are no non-standard protein/DNA/RNA residues in this entry.

6.3 Carbohydrates ⓘ

There are no carbohydrates in this entry.

6.4 Ligands ⓘ

In the following table, the Atoms column lists the number of modelled atoms in the group and the number defined in the chemical component dictionary. LLDF column lists the quality of electron density of the group with respect to its neighbouring residues in protein, DNA or RNA chains. The B-factors column lists the minimum, median, 95th percentile and maximum values of B factors of atoms in the group. The column labelled ‘Q< 0.9’ lists the number of atoms with occupancy less than 0.9.

Mol	Type	Chain	Res	Atoms	RSR	LLDF	B-factors(\AA^2)	Q<0.9
3	G19	0	2881	36/36	0.25	0.65	70,70,70,70	0

6.5 Other polymers ⓘ

There are no such residues in this entry.