



Full wwPDB X-ray Structure Validation Report

Mar 1, 2014 – 03:09 AM GMT

PDB ID : 1OJD
Title : HUMAN MONOAMINE OXIDASE B IN COMPLEX WITH LAURYLDIM
ETHYLAMINE-N-OXIDE(LDAO)
Authors : Binda, C.; Edmondson, D.E.; Mattevi, A.
Deposited on : 2003-07-08
Resolution : 3.10 Å(reported)

This is a full wwPDB validation report for a publicly released PDB entry.
We welcome your comments at validation@mail.wwpdb.org
A user guide is available at <http://wwpdb.org/ValidationPDFNotes.html>

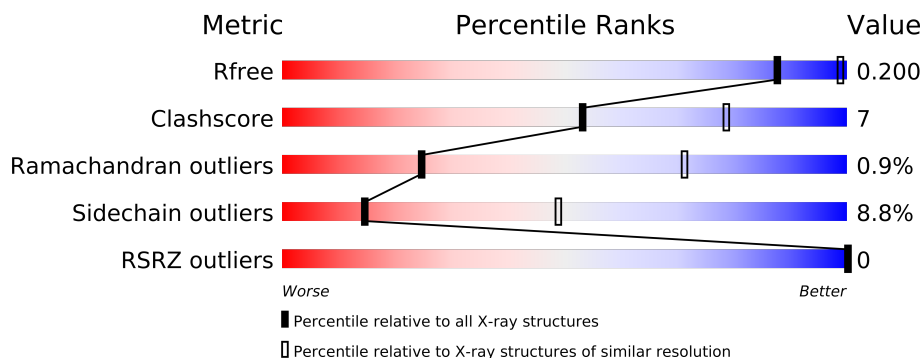
The following versions of software and data (see [references](#)) were used in the production of this report:

MolProbity : 4.02b-467
Mogul : 1.15 2013
Xtriage (Phenix) : dev-1323
EDS : stable22639
Percentile statistics : 21963
Refmac : 5.8.0049
CCP4 : 6.3.0 (Settle)
Ideal geometry (proteins) : Engh & Huber (2001)
Ideal geometry (DNA, RNA) : Parkinson et. al. (1996)
Validation Pipeline (wwPDB-VP) : stable22683

1 Overall quality at a glance

The reported resolution of this entry is 3.10 Å.

Percentile scores (ranging between 0-100) for global validation metrics of the entry are shown in the following graphic. The table shows the number of entries on which the scores are based.



Metric	Whole archive (#Entries)	Similar resolution (#Entries, resolution range(Å))
R_{free}	66092	1007 (3.18-3.02)
Clashscore	79885	1078 (3.16-3.04)
Ramachandran outliers	78287	1044 (3.16-3.04)
Sidechain outliers	78261	1044 (3.16-3.04)
RSRZ outliers	66119	1008 (3.18-3.02)

The table below summarises the geometric issues observed across the polymeric chains and their fit to the electron density. The red, orange, yellow and green segments on the lower bar indicate the fraction of residues that contain outliers for ≥ 3 , 2, 1 and 0 types of geometric quality criteria. The upper red bar (where present) indicates the fraction of residues that have poor fit to the electron density.

Mol	Chain	Length	Quality of chain
1	A	520	
1	B	520	
1	C	520	
1	D	520	
1	E	520	
1	F	520	
1	G	520	
1	H	520	
1	I	520	
1	L	520	

The following table lists non-polymeric compounds that are outliers for geometric or electron-density-fit criteria:

Mol	Type	Chain	Res	Geometry	Electron density
3	LDA	A	601	-	X
3	LDA	B	601	-	X
3	LDA	C	601	-	X
3	LDA	D	601	-	X
3	LDA	E	601	-	X
3	LDA	F	601	-	X
3	LDA	G	601	-	X
3	LDA	H	601	-	X
3	LDA	I	601	-	X
3	LDA	L	601	-	X

2 Entry composition

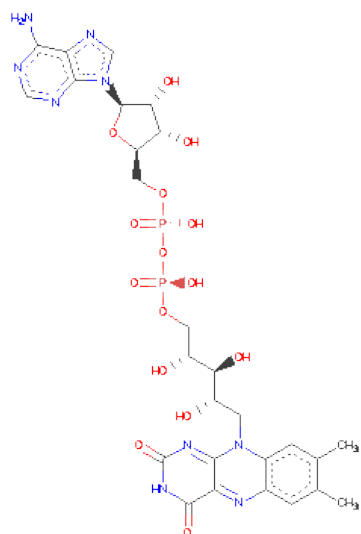
There are 3 unique types of molecules in this entry. The entry contains 40219 atoms, of which 0 are hydrogen and 0 are deuterium.

In the tables below, the ZeroOcc column contains the number of atoms modelled with zero occupancy, the AltConf column contains the number of residues with at least one atom in alternate conformation and the Trace column contains the number of residues modelled with at most 2 atoms.

- Molecule 1 is a protein called AMINE OXIDASE [FLAVIN-CONTAINING] B.

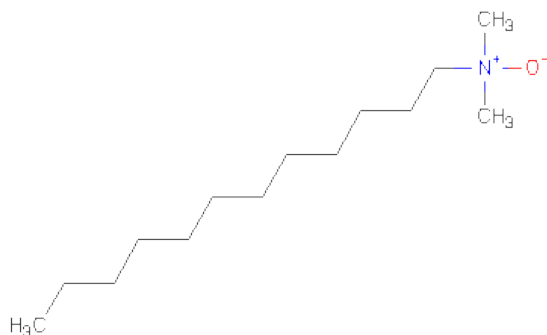
Mol	Chain	Residues	Atoms					ZeroOcc	AltConf	Trace
1	A	497	Total	C	N	O	S	0	0	0
			3958	2531	678	725	24			
1	B	494	Total	C	N	O	S	0	0	0
			3936	2517	675	720	24			
1	C	498	Total	C	N	O	S	0	0	0
			3963	2534	679	726	24			
1	D	494	Total	C	N	O	S	0	0	0
			3936	2517	675	720	24			
1	E	498	Total	C	N	O	S	0	0	0
			3963	2534	679	726	24			
1	F	497	Total	C	N	O	S	0	0	0
			3958	2531	678	725	24			
1	G	494	Total	C	N	O	S	0	0	0
			3936	2517	675	720	24			
1	H	498	Total	C	N	O	S	0	0	0
			3963	2534	679	726	24			
1	I	497	Total	C	N	O	S	0	0	0
			3958	2531	678	725	24			
1	L	497	Total	C	N	O	S	0	0	0
			3958	2531	678	725	24			

- Molecule 2 is FLAVIN-ADENINE DINUCLEOTIDE (three-letter code: FAD) (formula: $C_{27}H_{33}N_9O_{15}P_2$).



Mol	Chain	Residues	Atoms					ZeroOcc	AltConf
2	A	1	Total	C	N	O	P	0	0
			53	27	9	15	2		
2	B	1	Total	C	N	O	P	0	0
			53	27	9	15	2		
2	C	1	Total	C	N	O	P	0	0
			53	27	9	15	2		
2	D	1	Total	C	N	O	P	0	0
			53	27	9	15	2		
2	E	1	Total	C	N	O	P	0	0
			53	27	9	15	2		
2	F	1	Total	C	N	O	P	0	0
			53	27	9	15	2		
2	G	1	Total	C	N	O	P	0	0
			53	27	9	15	2		
2	H	1	Total	C	N	O	P	0	0
			53	27	9	15	2		
2	I	1	Total	C	N	O	P	0	0
			53	27	9	15	2		
2	L	1	Total	C	N	O	P	0	0
			53	27	9	15	2		

- Molecule 3 is LAURYL DIMETHYLAMINE-N-OXIDE (three-letter code: LDA) (formula: C₁₄H₃₁NO).



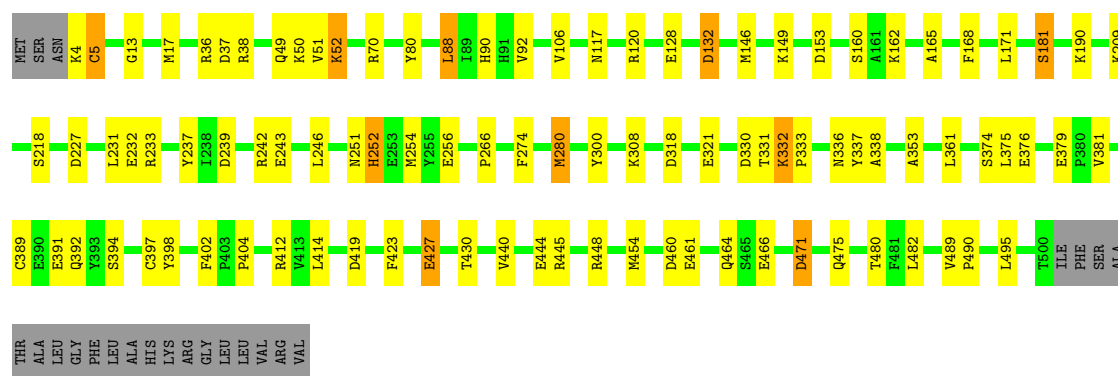
Mol	Chain	Residues	Atoms				ZeroOcc	AltConf
3	A	1	Total	C	N	O	0	0
			16	14	1	1		
3	B	1	Total	C	N	O	0	0
			16	14	1	1		
3	C	1	Total	C	N	O	0	0
			16	14	1	1		
3	D	1	Total	C	N	O	0	0
			16	14	1	1		
3	E	1	Total	C	N	O	0	0
			16	14	1	1		
3	F	1	Total	C	N	O	0	0
			16	14	1	1		
3	G	1	Total	C	N	O	0	0
			16	14	1	1		
3	H	1	Total	C	N	O	0	0
			16	14	1	1		
3	I	1	Total	C	N	O	0	0
			16	14	1	1		
3	L	1	Total	C	N	O	0	0
			16	14	1	1		

3 Residue-property plots

These plots are drawn for all protein, RNA and DNA chains in the entry. The first graphic for a chain summarises the proportions of errors displayed in the second graphic. The second graphic shows the sequence view annotated by issues in geometry and electron density. Residues are color-coded according to the number of geometric quality criteria for which they contain at least one outlier: green = 0, yellow = 1, orange = 2 and red = 3 or more. A red dot above a residue indicates a poor fit to the electron density ($RSRZ > 2$). Stretches of 2 or more consecutive residues without any outlier are shown as a green connector. Residues present in the sample, but not in the model, are shown in grey.

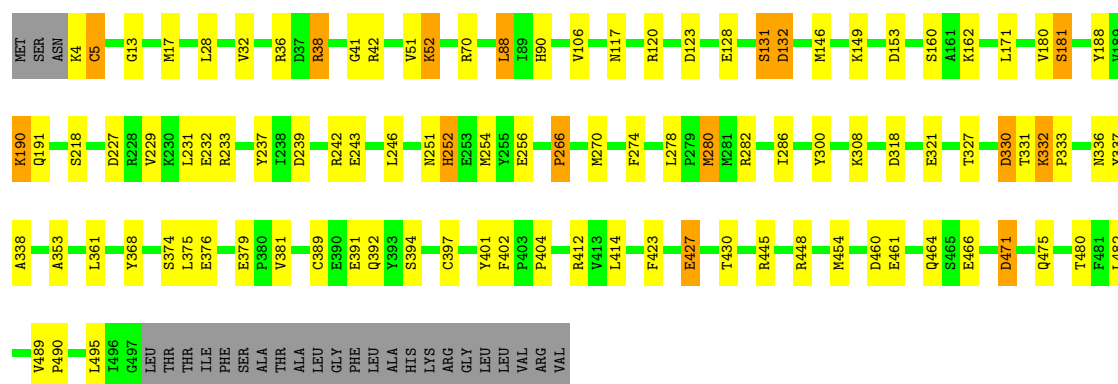
• Molecule 1: AMINE OXIDASE [FLAVIN-CONTAINING] B

Chain A:



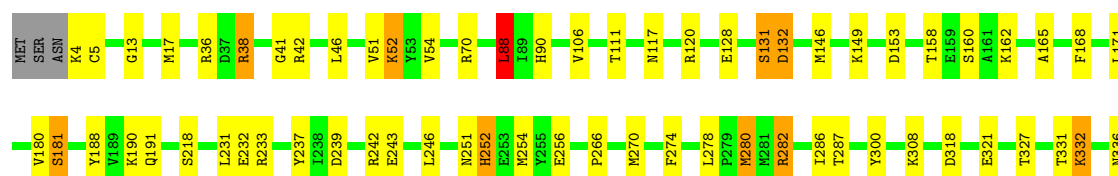
• Molecule 1: AMINE OXIDASE [FLAVIN-CONTAINING] B

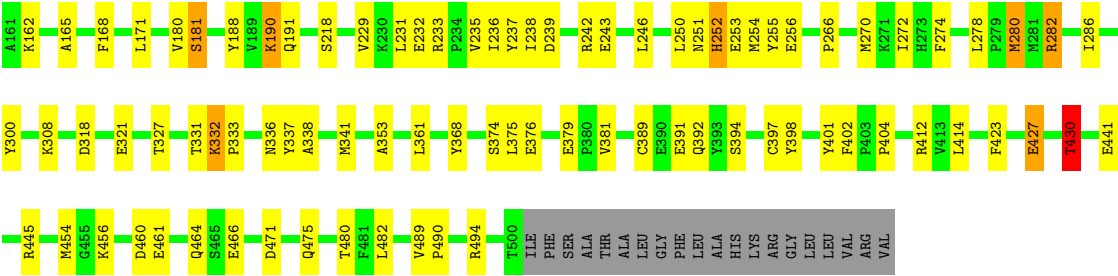
Chain B:



• Molecule 1: AMINE OXIDASE [FLAVIN-CONTAINING] B

Chain C:





4 Data and refinement statistics

Property	Value	Source
Space group	P 1	Depositor
Cell constants a, b, c, α , β , γ	108.41Å 132.43Å 154.84Å 90.14° 90.45° 114.02°	Depositor
Resolution (Å)	40.00 – 3.10 51.61 – 3.10	Depositor EDS
% Data completeness (in resolution range)	98.4 (40.00-3.10) 96.0 (51.61-3.10)	Depositor EDS
R_{merge}	0.09	Depositor
R_{sym}	(Not available)	Depositor
$\langle I/\sigma(I) \rangle$ ¹	4.01 (at 3.13Å)	Xtriage
Refinement program	REFMAC	Depositor
R, R_{free}	0.252 , 0.260 0.200 , 0.200	Depositor DCC
R_{free} test set	1408 reflections (1.01%)	DCC
Wilson B-factor (Å ²)	49.1	Xtriage
Anisotropy	0.881	Xtriage
Bulk solvent k_{sol} (e/Å ³), B_{sol} (Å ²)	0.29 , -1.5	EDS
Estimated twinning fraction	0.186 for h,-h-k,-l 0.047 for -h,-k,l 0.046 for -h,h+k,-l	Xtriage
L-test for twinning	$\langle L \rangle = 0.43$, $\langle L^2 \rangle = 0.25$	Xtriage
Outliers	0 of 140447 reflections	Xtriage
F_o, F_c correlation	0.90	EDS
Total number of atoms	40219	wwPDB-VP
Average B, all atoms (Å ²)	40.0	wwPDB-VP

Xtriage's analysis on translational NCS is as follows: *The largest off-origin peak in the Patterson function is 5.20% of the height of the origin peak. No significant pseudotranslation is detected.*

¹Intensities estimated from amplitudes.

5 Model quality ⓘ

5.1 Standard geometry ⓘ

Bond lengths and bond angles in the following residue types are not validated in this section: LDA, FAD

The Z score for a bond length (or angle) is the number of standard deviations the observed value is removed from the expected value. A bond length (or angle) with $|Z| > 5$ is considered an outlier worth inspection. RMSZ is the root-mean-square of all Z scores of the bond lengths (or angles).

Mol	Chain	Bond lengths		Bond angles	
		RMSZ	$\# Z > 5$	RMSZ	$\# Z > 5$
1	A	0.75	1/4055 (0.0%)	0.84	7/5504 (0.1%)
1	B	0.76	1/4033 (0.0%)	0.84	7/5473 (0.1%)
1	C	0.73	1/4060 (0.0%)	0.82	4/5511 (0.1%)
1	D	0.74	1/4033 (0.0%)	0.83	8/5473 (0.1%)
1	E	0.73	1/4060 (0.0%)	0.84	8/5511 (0.1%)
1	F	0.74	1/4055 (0.0%)	0.84	7/5504 (0.1%)
1	G	0.74	1/4033 (0.0%)	0.84	10/5473 (0.2%)
1	H	0.76	1/4060 (0.0%)	0.85	6/5511 (0.1%)
1	I	0.76	1/4055 (0.0%)	0.83	4/5504 (0.1%)
1	L	0.76	1/4055 (0.0%)	0.84	4/5504 (0.1%)
All	All	0.75	10/40499 (0.0%)	0.84	65/54968 (0.1%)

Chiral center outliers are detected by calculating the chiral volume of a chiral center and verifying if the center is modelled as a planar moiety or with the opposite hand. A planarity outlier is detected by checking planarity of atoms in a peptide group, atoms in a mainchain group or atoms of a sidechain that are expected to be planar.

Mol	Chain	#Chirality outliers	#Planarity outliers
1	B	0	1
1	C	0	1
1	D	0	1
1	E	0	1
1	G	0	1
1	H	0	2
1	I	0	1
1	L	0	1
All	All	0	9

All (10) bond length outliers are listed below:

Mol	Chain	Res	Type	Atoms	Z	Observed(Å)	Ideal(Å)
1	H	430	THR	CB-CG2	-9.03	1.22	1.52
1	G	430	THR	CB-CG2	-8.87	1.23	1.52
1	L	430	THR	CB-CG2	-8.51	1.24	1.52
1	I	430	THR	CB-CG2	-8.21	1.25	1.52
1	B	430	THR	CB-CG2	-7.28	1.28	1.52
1	F	430	THR	CB-CG2	-7.09	1.28	1.52
1	C	430	THR	CB-CG2	-7.03	1.29	1.52
1	E	430	THR	CB-CG2	-6.88	1.29	1.52
1	A	430	THR	CB-CG2	-6.82	1.29	1.52
1	D	430	THR	CB-CG2	-6.16	1.32	1.52

All (65) bond angle outliers are listed below:

Mol	Chain	Res	Type	Atoms	Z	Observed(°)	Ideal(°)
1	L	430	THR	OG1-CB-CG2	-10.92	84.89	110.00
1	H	430	THR	OG1-CB-CG2	-10.75	85.28	110.00
1	I	430	THR	OG1-CB-CG2	-10.02	86.97	110.00
1	G	430	THR	OG1-CB-CG2	-9.62	87.88	110.00
1	C	430	THR	OG1-CB-CG2	-7.74	92.19	110.00
1	A	430	THR	OG1-CB-CG2	-7.66	92.39	110.00
1	D	430	THR	OG1-CB-CG2	-7.58	92.58	110.00
1	F	430	THR	OG1-CB-CG2	-7.53	92.68	110.00
1	B	430	THR	OG1-CB-CG2	-7.47	92.81	110.00
1	H	123	ASP	CB-CG-OD2	7.23	124.80	118.30
1	E	430	THR	OG1-CB-CG2	-7.14	93.58	110.00
1	G	123	ASP	CB-CG-OD2	6.75	124.38	118.30
1	I	227	ASP	CB-CG-OD2	6.37	124.03	118.30
1	F	124	ASP	CB-CG-OD2	6.35	124.02	118.30
1	F	114	ASP	CB-CG-OD2	6.18	123.86	118.30
1	G	227	ASP	CB-CG-OD2	6.14	123.83	118.30
1	G	153	ASP	CB-CG-OD1	6.11	123.80	118.30
1	D	42	ARG	NE-CZ-NH2	-6.05	117.28	120.30
1	L	42	ARG	NE-CZ-NH2	-5.97	117.31	120.30
1	F	25	ASP	CB-CG-OD2	5.96	123.67	118.30
1	E	329	ASP	CB-CG-OD2	5.95	123.66	118.30
1	H	37	ASP	CB-CG-OD2	5.80	123.52	118.30
1	E	124	ASP	CB-CG-OD2	5.72	123.45	118.30
1	B	448	ARG	NE-CZ-NH2	-5.68	117.46	120.30
1	F	318	ASP	CB-CG-OD2	5.68	123.41	118.30
1	A	419	ASP	CB-CG-OD2	5.66	123.39	118.30
1	B	123	ASP	CB-CG-OD2	5.65	123.39	118.30
1	G	419	ASP	CB-CG-OD2	5.63	123.36	118.30
1	G	88	LEU	CA-CB-CG	5.62	128.23	115.30

Continued on next page...

Continued from previous page...

Mol	Chain	Res	Type	Atoms	Z	Observed(°)	Ideal(°)
1	A	471	ASP	CB-CG-OD2	5.61	123.35	118.30
1	D	88	LEU	CA-CB-CG	5.50	127.96	115.30
1	B	471	ASP	CB-CG-OD2	5.47	123.22	118.30
1	E	37	ASP	CB-CG-OD2	5.46	123.22	118.30
1	B	330	ASP	CB-CG-OD2	5.46	123.21	118.30
1	H	88	LEU	CA-CB-CG	5.46	127.86	115.30
1	L	114	ASP	CB-CG-OD2	5.44	123.20	118.30
1	I	37	ASP	CB-CG-OD2	5.42	123.18	118.30
1	F	329	ASP	CB-CG-OD2	5.40	123.16	118.30
1	D	132	ASP	CB-CG-OD2	5.39	123.15	118.30
1	C	42	ARG	NE-CZ-NH2	-5.38	117.61	120.30
1	A	448	ARG	NE-CZ-NH2	-5.37	117.61	120.30
1	D	227	ASP	CB-CG-OD2	5.34	123.11	118.30
1	H	25	ASP	CB-CG-OD2	5.32	123.09	118.30
1	I	124	ASP	CB-CG-OD2	5.31	123.08	118.30
1	D	310	ASP	CB-CG-OD2	5.30	123.07	118.30
1	B	227	ASP	CB-CG-OD2	5.28	123.05	118.30
1	B	42	ARG	NE-CZ-NH2	-5.25	117.67	120.30
1	G	37	ASP	CB-CG-OD2	5.25	123.03	118.30
1	E	6	ASP	CB-CG-OD2	5.24	123.01	118.30
1	A	37	ASP	CB-CG-OD2	5.22	123.00	118.30
1	E	42	ARG	NE-CZ-NH2	-5.21	117.69	120.30
1	C	88	LEU	CA-CB-CG	5.12	127.09	115.30
1	A	227	ASP	CB-CG-OD2	5.12	122.91	118.30
1	E	227	ASP	CB-CG-OD2	5.12	122.91	118.30
1	L	88	LEU	CA-CB-CG	5.11	127.06	115.30
1	A	330	ASP	CB-CG-OD2	5.08	122.88	118.30
1	C	42	ARG	NE-CZ-NH1	5.07	122.84	120.30
1	H	227	ASP	CB-CG-OD2	5.07	122.86	118.30
1	G	448	ARG	NE-CZ-NH2	-5.07	117.77	120.30
1	D	6	ASP	CB-CG-OD2	5.06	122.86	118.30
1	E	88	LEU	CA-CB-CG	5.06	126.94	115.30
1	G	430	THR	N-CA-CB	-5.06	100.69	110.30
1	G	460	ASP	CB-CG-OD2	5.03	122.83	118.30
1	D	55	ASP	CB-CG-OD2	5.02	122.82	118.30
1	F	495	LEU	CA-CB-CG	5.02	126.84	115.30

There are no chirality outliers.

All (9) planarity outliers are listed below:

Mol	Chain	Res	Type	Group
1	B	131	SER	Peptide

Continued on next page...

Continued from previous page...

Mol	Chain	Res	Type	Group
1	C	131	SER	Peptide
1	D	4	LYS	Peptide
1	E	4	LYS	Peptide
1	G	4	LYS	Peptide
1	H	131	SER	Peptide
1	H	4	LYS	Peptide
1	I	4	LYS	Peptide
1	L	4	LYS	Peptide

5.2 Close contacts ⓘ

In the following table, the Non-H and H(model) columns list the number of non-hydrogen atoms and hydrogen atoms in the chain respectively. The H(added) column lists the number of hydrogens added by MolProbity. The Clashes column lists the number of clashes within the asymmetric unit, and the number in parentheses is this value normalized per 1000 atoms of the molecule in the chain. The Symm-Clashes column gives symmetry related clashes, in the same way as for the Clashes column.

Mol	Chain	Non-H	H(model)	H(added)	Clashes	Symm-Clashes
1	A	3958	0	3959	60	0
1	B	3936	0	3934	63	0
1	C	3963	0	3961	60	0
1	D	3936	0	3934	65	0
1	E	3963	0	3961	56	1
1	F	3958	0	3959	59	0
1	G	3936	0	3934	62	1
1	H	3963	0	3961	66	0
1	I	3958	0	3959	69	0
1	L	3958	0	3959	69	0
2	A	53	0	29	0	0
2	B	53	0	29	0	0
2	C	53	0	29	0	0
2	D	53	0	29	0	0
2	E	53	0	29	0	0
2	F	53	0	29	0	0
2	G	53	0	29	0	0
2	H	53	0	29	0	0
2	I	53	0	29	0	0
2	L	53	0	29	0	0
3	A	16	0	31	3	0
3	B	16	0	31	3	0
3	C	16	0	31	2	0

Continued on next page...

Continued from previous page...

Mol	Chain	Non-H	H(model)	H(added)	Clashes	Symm-Clashes
3	D	16	0	31	3	0
3	E	16	0	31	3	0
3	F	16	0	31	2	0
3	G	16	0	31	3	0
3	H	16	0	31	3	0
3	I	16	0	31	3	0
3	L	16	0	31	3	0
All	All	40219	0	40121	561	1

Clashscore is defined as the number of clashes calculated for the entry per 1000 atoms (including hydrogens) of the entry. The overall clashscore for this entry is 7.

All (561) close contacts within the same asymmetric unit are listed below.

Atom-1	Atom-2	Distance(Å)	Clash(Å)
1:G:4:LYS:HA	1:G:5:CYS:SG	1.59	1.39
1:A:49:GLN:OE1	1:H:362:LYS:HA	1.11	1.27
1:H:4:LYS:C	1:H:5:CYS:SG	2.14	1.25
1:A:49:GLN:OE1	1:H:362:LYS:CA	1.88	1.21
1:G:4:LYS:CA	1:G:5:CYS:SG	2.36	1.14
1:I:4:LYS:C	1:I:5:CYS:SG	2.34	1.05
1:H:4:LYS:CA	1:H:5:CYS:SG	2.45	1.03
1:E:4:LYS:N	1:E:5:CYS:HG	1.58	1.01
1:D:375:LEU:HD21	1:I:130:PRO:HG3	1.41	0.99
1:G:171:LEU:HD23	3:G:601:LDA:H61	1.43	0.99
1:I:280:MET:HG3	1:L:389:CYS:HB3	1.45	0.97
1:F:4:LYS:C	1:F:5:CYS:SG	2.42	0.97
1:E:4:LYS:N	1:E:5:CYS:SG	2.38	0.96
1:D:171:LEU:HD23	3:D:601:LDA:H61	1.47	0.96
1:C:171:LEU:HD23	3:C:601:LDA:H61	1.48	0.94
1:C:392:GLN:HE22	1:D:274:PHE:H	1.14	0.94
1:I:274:PHE:H	1:L:392:GLN:HE22	1.13	0.93
1:A:392:GLN:HE22	1:B:274:PHE:H	1.12	0.93
1:G:266:PRO:HD3	1:G:427:GLU:HG3	1.50	0.91
1:F:171:LEU:HD23	3:F:601:LDA:H61	1.52	0.91
1:I:171:LEU:HD23	3:I:601:LDA:H61	1.52	0.91
1:E:392:GLN:HE22	1:F:274:PHE:H	1.19	0.90
1:L:171:LEU:HD23	3:L:601:LDA:H61	1.51	0.90
1:G:392:GLN:HE22	1:H:274:PHE:H	1.20	0.89
1:H:266:PRO:HD3	1:H:427:GLU:HG3	1.54	0.89
1:E:171:LEU:HD23	3:E:601:LDA:H61	1.55	0.86
1:A:266:PRO:HD3	1:A:427:GLU:HG3	1.57	0.86
1:F:336:ASN:HB3	1:F:337:TYR:HD1	1.41	0.86

Continued on next page...

Continued from previous page...

Atom-1	Atom-2	Distance(Å)	Clash(Å)
1:I:280:MET:HG3	1:L:389:CYS:CB	2.06	0.85
1:A:171:LEU:HD23	3:A:601:LDA:H61	1.57	0.85
1:I:266:PRO:HD3	1:I:427:GLU:HG3	1.60	0.84
1:C:266:PRO:HD3	1:C:427:GLU:HG3	1.60	0.84
1:L:4:LYS:N	1:L:5:CYS:SG	2.51	0.83
1:D:375:LEU:HD21	1:I:130:PRO:CG	2.08	0.83
1:G:4:LYS:C	1:G:5:CYS:SG	2.56	0.83
1:H:4:LYS:C	1:H:5:CYS:HG	1.77	0.83
1:L:4:LYS:N	1:L:5:CYS:HG	1.77	0.83
1:E:266:PRO:HD3	1:E:427:GLU:HG3	1.59	0.82
1:E:274:PHE:H	1:F:392:GLN:HE22	1.23	0.82
1:C:336:ASN:HB3	1:C:337:TYR:HD1	1.43	0.82
1:B:331:THR:HG23	1:B:338:ALA:HA	1.62	0.82
1:F:266:PRO:HD3	1:F:427:GLU:HG3	1.61	0.81
1:I:4:LYS:CA	1:I:5:CYS:SG	2.68	0.81
1:D:4:LYS:C	1:D:5:CYS:SG	2.59	0.81
1:D:331:THR:HG23	1:D:338:ALA:HA	1.62	0.81
1:B:171:LEU:HD23	3:B:601:LDA:H61	1.62	0.81
1:C:389:CYS:HB3	1:D:280:MET:HG3	1.62	0.81
1:L:266:PRO:HD3	1:L:427:GLU:HG3	1.61	0.81
1:C:280:MET:HG3	1:D:389:CYS:HB3	1.63	0.80
1:A:274:PHE:H	1:B:392:GLN:HE22	1.30	0.80
1:I:392:GLN:HE22	1:L:274:PHE:H	1.29	0.80
1:H:336:ASN:HB3	1:H:337:TYR:HD1	1.47	0.80
1:H:171:LEU:HD23	3:H:601:LDA:H61	1.64	0.79
1:I:4:LYS:C	1:I:5:CYS:HG	1.86	0.79
1:D:375:LEU:CD2	1:I:130:PRO:HG3	2.12	0.78
1:E:280:MET:HE1	1:F:353:ALA:HB1	1.66	0.78
1:A:353:ALA:HB1	1:B:280:MET:HE1	1.65	0.78
1:L:336:ASN:HB3	1:L:337:TYR:HD1	1.49	0.77
1:A:336:ASN:HB3	1:A:337:TYR:HD1	1.49	0.77
1:B:336:ASN:HB3	1:B:337:TYR:HD1	1.48	0.77
1:I:336:ASN:HB3	1:I:337:TYR:HD1	1.47	0.77
1:G:336:ASN:HB3	1:G:337:TYR:HD1	1.49	0.77
1:B:266:PRO:HD3	1:B:427:GLU:HG3	1.67	0.77
1:E:353:ALA:HB1	1:F:280:MET:HE1	1.66	0.77
1:G:331:THR:HG23	1:G:338:ALA:HA	1.64	0.77
1:G:171:LEU:CD2	3:G:601:LDA:H61	2.15	0.77
1:G:274:PHE:H	1:H:392:GLN:HE22	1.32	0.77
1:C:274:PHE:H	1:D:392:GLN:HE22	1.31	0.77
1:D:171:LEU:CD2	3:D:601:LDA:H61	2.15	0.76
1:F:4:LYS:O	1:F:5:CYS:SG	2.43	0.76

Continued on next page...

Continued from previous page...

Atom-1	Atom-2	Distance(Å)	Clash(Å)
1:A:280:MET:HG3	1:B:389:CYS:HB3	1.68	0.76
1:E:266:PRO:CD	1:E:427:GLU:HG3	2.17	0.75
1:L:171:LEU:CD2	3:L:601:LDA:H61	2.16	0.75
1:A:171:LEU:CD2	3:A:601:LDA:H61	2.15	0.75
1:D:336:ASN:HB3	1:D:337:TYR:HD1	1.52	0.75
1:D:266:PRO:HD3	1:D:427:GLU:HG3	1.66	0.75
1:D:4:LYS:N	1:D:5:CYS:SG	2.59	0.75
1:F:266:PRO:CD	1:F:427:GLU:HG3	2.16	0.75
1:I:280:MET:HE1	1:L:353:ALA:HB1	1.69	0.74
1:C:171:LEU:CD2	3:C:601:LDA:H61	2.16	0.74
1:H:480:THR:HG22	1:H:482:LEU:H	1.51	0.74
1:I:4:LYS:N	1:I:5:CYS:SG	2.60	0.74
1:C:336:ASN:HB3	1:C:337:TYR:CD1	2.22	0.74
1:F:336:ASN:HB3	1:F:337:TYR:CD1	2.21	0.74
1:E:480:THR:HG22	1:E:482:LEU:H	1.53	0.74
1:I:266:PRO:CD	1:I:427:GLU:HG3	2.17	0.74
1:I:171:LEU:CD2	3:I:601:LDA:H61	2.17	0.74
1:B:171:LEU:CD2	3:B:601:LDA:H61	2.17	0.74
1:L:266:PRO:CD	1:L:427:GLU:HG3	2.18	0.74
1:F:171:LEU:CD2	3:F:601:LDA:H61	2.19	0.73
1:B:266:PRO:CD	1:B:427:GLU:HG3	2.17	0.73
1:C:353:ALA:HB1	1:D:280:MET:HE1	1.69	0.73
1:G:389:CYS:HB3	1:H:280:MET:HG3	1.70	0.73
1:E:336:ASN:HB3	1:E:337:TYR:HD1	1.53	0.73
1:G:480:THR:HG22	1:G:482:LEU:H	1.53	0.73
1:C:331:THR:HG23	1:C:338:ALA:HA	1.70	0.73
1:G:4:LYS:CA	1:G:5:CYS:HG	2.00	0.72
1:C:266:PRO:CD	1:C:427:GLU:HG3	2.20	0.72
1:H:266:PRO:CD	1:H:427:GLU:HG3	2.20	0.72
1:H:4:LYS:HA	1:H:5:CYS:SG	2.29	0.72
1:G:266:PRO:CD	1:G:427:GLU:HG3	2.19	0.72
1:A:389:CYS:HB3	1:B:280:MET:HG3	1.72	0.72
1:A:480:THR:HG22	1:A:482:LEU:H	1.54	0.72
1:A:70:ARG:HD3	1:A:466:GLU:OE2	1.89	0.72
1:G:246:LEU:HD22	1:G:254:MET:HE2	1.70	0.71
1:A:336:ASN:HB3	1:A:337:TYR:CD1	2.25	0.71
1:A:331:THR:HG23	1:A:338:ALA:HA	1.70	0.71
1:H:171:LEU:CD2	3:H:601:LDA:H61	2.19	0.71
1:H:70:ARG:HD3	1:H:466:GLU:OE2	1.90	0.71
1:E:171:LEU:CD2	3:E:601:LDA:H61	2.19	0.71
1:D:4:LYS:N	1:D:5:CYS:HG	1.88	0.71
1:E:336:ASN:HB3	1:E:337:TYR:CD1	2.25	0.71

Continued on next page...

Continued from previous page...

Atom-1	Atom-2	Distance(Å)	Clash(Å)
1:A:266:PRO:CD	1:A:427:GLU:HG3	2.20	0.71
1:H:336:ASN:HB3	1:H:337:TYR:CD1	2.25	0.71
1:D:246:LEU:HD22	1:D:254:MET:HE2	1.71	0.71
1:L:336:ASN:HB3	1:L:337:TYR:CD1	2.25	0.71
1:I:389:CYS:HB3	1:L:280:MET:HG3	1.73	0.71
1:A:49:GLN:OE1	1:H:362:LYS:CB	2.38	0.70
1:B:336:ASN:HB3	1:B:337:TYR:CD1	2.26	0.70
1:H:331:THR:HG23	1:H:338:ALA:HA	1.72	0.70
1:I:336:ASN:HB3	1:I:337:TYR:CD1	2.26	0.70
1:H:4:LYS:N	1:H:5:CYS:SG	2.64	0.70
1:F:70:ARG:HD3	1:F:466:GLU:OE2	1.91	0.70
1:L:70:ARG:HD3	1:L:466:GLU:OE2	1.91	0.70
1:B:480:THR:HG22	1:B:482:LEU:H	1.55	0.70
1:A:280:MET:HE1	1:B:353:ALA:HB1	1.72	0.70
1:E:280:MET:HG3	1:F:389:CYS:HB3	1.74	0.70
1:G:336:ASN:HB3	1:G:337:TYR:CD1	2.27	0.69
1:I:353:ALA:HB1	1:L:280:MET:HE1	1.72	0.69
1:L:423:PHE:O	1:L:445:ARG:NH2	2.25	0.69
1:I:480:THR:HG22	1:I:482:LEU:H	1.56	0.69
1:C:280:MET:HE1	1:D:353:ALA:HB1	1.73	0.69
1:D:237:TYR:CE2	1:D:239:ASP:HB2	2.28	0.69
1:F:480:THR:HG22	1:F:482:LEU:H	1.58	0.68
1:I:331:THR:HG23	1:I:338:ALA:HA	1.75	0.68
1:B:237:TYR:CE2	1:B:239:ASP:HB2	2.29	0.68
1:L:331:THR:HG23	1:L:338:ALA:HA	1.73	0.68
1:D:266:PRO:CD	1:D:427:GLU:HG3	2.23	0.68
1:E:389:CYS:HB3	1:F:280:MET:HG3	1.76	0.68
1:D:336:ASN:HB3	1:D:337:TYR:CD1	2.29	0.67
1:E:331:THR:HG23	1:E:338:ALA:HA	1.75	0.67
1:F:423:PHE:O	1:F:445:ARG:NH2	2.28	0.67
1:I:402:PHE:HZ	1:I:414:LEU:HD11	1.59	0.67
1:C:246:LEU:HD22	1:C:254:MET:HE2	1.76	0.66
1:F:237:TYR:CE2	1:F:239:ASP:HB2	2.31	0.66
1:A:389:CYS:CB	1:B:280:MET:HG3	2.26	0.66
1:F:331:THR:HG23	1:F:338:ALA:HA	1.77	0.66
1:D:480:THR:HG22	1:D:482:LEU:H	1.59	0.66
1:D:402:PHE:HZ	1:D:414:LEU:HD11	1.61	0.66
1:I:13:GLY:O	1:I:17:MET:HG2	1.95	0.66
1:I:246:LEU:HD22	1:I:254:MET:HE2	1.78	0.66
1:E:402:PHE:HZ	1:E:414:LEU:HD11	1.61	0.66
1:G:389:CYS:CB	1:H:280:MET:HG3	2.26	0.65
1:A:423:PHE:O	1:A:445:ARG:NH2	2.28	0.65

Continued on next page...

Continued from previous page...

Atom-1	Atom-2	Distance(Å)	Clash(Å)
1:L:237:TYR:CE2	1:L:239:ASP:HB2	2.32	0.65
1:D:375:LEU:HG	1:I:128:GLU:O	1.96	0.65
1:A:353:ALA:CB	1:B:280:MET:HE1	2.27	0.65
1:A:36:ARG:NH1	1:A:391:GLU:OE1	2.30	0.65
1:B:423:PHE:O	1:B:445:ARG:NH2	2.30	0.65
1:H:4:LYS:N	1:H:5:CYS:HG	1.95	0.64
1:A:4:LYS:C	1:A:5:CYS:SG	2.76	0.64
1:A:246:LEU:HD22	1:A:254:MET:HE2	1.79	0.64
1:E:353:ALA:CB	1:F:280:MET:HE1	2.28	0.64
1:C:181:SER:HB2	1:C:404:PRO:HA	1.79	0.64
1:C:237:TYR:CE2	1:C:239:ASP:HB2	2.31	0.64
1:B:246:LEU:HD22	1:B:254:MET:HE2	1.80	0.64
1:I:117:ASN:HD22	1:I:120:ARG:NH1	1.96	0.64
1:H:237:TYR:CE2	1:H:239:ASP:HB2	2.33	0.63
1:C:423:PHE:O	1:C:445:ARG:NH2	2.31	0.63
1:G:353:ALA:HB1	1:H:280:MET:HE1	1.79	0.63
1:H:51:VAL:HG22	1:H:300:TYR:CZ	2.34	0.63
1:D:117:ASN:HD22	1:D:120:ARG:NH1	1.97	0.63
1:I:70:ARG:HD3	1:I:466:GLU:OE2	1.99	0.63
1:E:36:ARG:NH1	1:E:391:GLU:OE1	2.32	0.63
1:C:402:PHE:HZ	1:C:414:LEU:HD11	1.64	0.62
1:E:252:HIS:CD2	1:F:252:HIS:CD2	2.86	0.62
1:A:402:PHE:HZ	1:A:414:LEU:HD11	1.64	0.62
1:F:246:LEU:HD22	1:F:254:MET:HE2	1.81	0.62
1:C:70:ARG:HD3	1:C:466:GLU:OE2	2.00	0.62
1:H:246:LEU:HD22	1:H:254:MET:HE2	1.80	0.62
1:F:402:PHE:HZ	1:F:414:LEU:HD11	1.65	0.62
1:C:36:ARG:NH1	1:C:391:GLU:OE1	2.33	0.62
1:L:36:ARG:NH1	1:L:391:GLU:OE1	2.33	0.62
1:G:280:MET:HE1	1:H:353:ALA:HB1	1.81	0.62
1:G:237:TYR:CE2	1:G:239:ASP:HB2	2.35	0.62
1:G:70:ARG:HD3	1:G:466:GLU:OE2	1.99	0.61
1:D:423:PHE:O	1:D:445:ARG:NH2	2.32	0.61
1:E:70:ARG:HD3	1:E:466:GLU:OE2	2.00	0.61
1:G:402:PHE:HZ	1:G:414:LEU:HD11	1.65	0.61
1:G:4:LYS:N	1:G:5:CYS:HG	1.99	0.61
1:E:280:MET:HE1	1:F:353:ALA:CB	2.31	0.61
1:G:153:ASP:HA	1:G:162:LYS:HE2	1.83	0.61
1:A:181:SER:HB2	1:A:404:PRO:HA	1.83	0.61
1:A:237:TYR:CE2	1:A:239:ASP:HB2	2.35	0.61
1:B:88:LEU:N	1:B:88:LEU:HD23	2.16	0.61
1:C:389:CYS:CB	1:D:280:MET:HG3	2.30	0.61

Continued on next page...

Continued from previous page...

Atom-1	Atom-2	Distance(Å)	Clash(Å)
1:I:280:MET:HE1	1:L:353:ALA:CB	2.30	0.60
1:L:480:THR:HG22	1:L:482:LEU:H	1.66	0.60
1:C:480:THR:HG22	1:C:482:LEU:H	1.65	0.60
1:B:402:PHE:HZ	1:B:414:LEU:HD11	1.67	0.60
1:H:423:PHE:O	1:H:445:ARG:NH2	2.34	0.60
1:L:402:PHE:HZ	1:L:414:LEU:HD11	1.66	0.60
1:B:70:ARG:HD3	1:B:466:GLU:OE2	2.00	0.60
1:H:36:ARG:NH1	1:H:391:GLU:OE1	2.34	0.60
1:A:252:HIS:CD2	1:B:252:HIS:CD2	2.90	0.60
1:A:280:MET:HE1	1:B:353:ALA:CB	2.32	0.59
1:B:117:ASN:HD22	1:B:120:ARG:NH1	2.00	0.59
1:I:181:SER:HB2	1:I:404:PRO:HA	1.83	0.59
1:I:353:ALA:CB	1:L:280:MET:HE1	2.32	0.59
1:I:423:PHE:O	1:I:445:ARG:NH2	2.36	0.59
1:G:117:ASN:HD22	1:G:120:ARG:NH1	2.00	0.59
1:F:36:ARG:NH1	1:F:391:GLU:OE1	2.35	0.59
1:E:237:TYR:CE2	1:E:239:ASP:HB2	2.38	0.58
1:A:4:LYS:N	1:A:5:CYS:HG	2.00	0.58
1:H:181:SER:HB2	1:H:404:PRO:HA	1.85	0.58
1:H:402:PHE:HZ	1:H:414:LEU:HD11	1.68	0.58
1:H:117:ASN:HD22	1:H:120:ARG:NH1	2.01	0.58
1:I:237:TYR:CE2	1:I:239:ASP:HB2	2.38	0.58
1:E:246:LEU:HD22	1:E:254:MET:HE2	1.84	0.58
1:E:423:PHE:O	1:E:445:ARG:NH2	2.36	0.58
1:D:36:ARG:NH1	1:D:391:GLU:OE1	2.37	0.58
1:D:70:ARG:HD3	1:D:466:GLU:OE2	2.04	0.58
1:E:181:SER:HB2	1:E:404:PRO:HA	1.84	0.58
1:G:36:ARG:NH1	1:G:391:GLU:OE1	2.36	0.58
1:D:374:SER:HA	1:I:128:GLU:OE2	2.04	0.58
1:L:246:LEU:HD22	1:L:254:MET:HE2	1.85	0.57
1:C:353:ALA:CB	1:D:280:MET:HE1	2.34	0.57
1:D:153:ASP:HA	1:D:162:LYS:HE2	1.86	0.57
1:F:181:SER:HB2	1:F:404:PRO:HA	1.85	0.57
1:G:51:VAL:HG22	1:G:300:TYR:CZ	2.39	0.57
1:F:117:ASN:HD22	1:F:120:ARG:NH1	2.02	0.57
1:L:51:VAL:HG22	1:L:300:TYR:CZ	2.39	0.57
1:A:251:ASN:O	1:A:252:HIS:HB2	2.04	0.57
1:C:51:VAL:HG22	1:C:300:TYR:CZ	2.40	0.57
1:E:117:ASN:HD22	1:E:120:ARG:NH1	2.01	0.57
1:H:278:LEU:HD13	1:H:282:ARG:HG2	1.86	0.57
1:I:389:CYS:CB	1:L:280:MET:HG3	2.35	0.57
1:B:51:VAL:HG22	1:B:300:TYR:CZ	2.40	0.57

Continued on next page...

Continued from previous page...

Atom-1	Atom-2	Distance(Å)	Clash(Å)
1:F:51:VAL:HG22	1:F:300:TYR:CZ	2.39	0.57
1:G:280:MET:HG3	1:H:389:CYS:HB3	1.86	0.56
1:C:270:MET:HG2	1:C:286:ILE:HD12	1.87	0.56
1:B:4:LYS:C	1:B:5:CYS:SG	2.83	0.56
1:E:51:VAL:HG22	1:E:300:TYR:CZ	2.41	0.56
1:B:36:ARG:NH1	1:B:391:GLU:OE1	2.39	0.56
1:I:51:VAL:HG22	1:I:300:TYR:CZ	2.40	0.56
1:E:4:LYS:C	1:E:5:CYS:SG	2.84	0.56
1:B:4:LYS:N	1:B:5:CYS:HG	2.04	0.56
1:C:88:LEU:N	1:C:88:LEU:HD23	2.21	0.56
1:B:153:ASP:HA	1:B:162:LYS:HE2	1.88	0.56
1:F:251:ASN:O	1:F:252:HIS:HB2	2.05	0.55
1:L:153:ASP:HA	1:L:162:LYS:HE2	1.88	0.55
1:B:270:MET:HG2	1:B:286:ILE:HD12	1.87	0.55
1:B:181:SER:HB2	1:B:404:PRO:HA	1.89	0.55
1:G:13:GLY:O	1:G:17:MET:HG2	2.05	0.55
1:A:153:ASP:HA	1:A:162:LYS:HE2	1.89	0.55
1:I:36:ARG:NH1	1:I:391:GLU:OE1	2.40	0.55
1:H:153:ASP:HA	1:H:162:LYS:HE2	1.88	0.55
1:E:231:LEU:O	1:E:233:ARG:HD3	2.07	0.55
1:G:423:PHE:O	1:G:445:ARG:NH2	2.38	0.54
1:G:4:LYS:N	1:G:5:CYS:SG	2.80	0.54
1:A:117:ASN:HD22	1:A:120:ARG:NH1	2.05	0.54
1:E:88:LEU:N	1:E:88:LEU:HD23	2.23	0.54
1:D:231:LEU:O	1:D:233:ARG:HD3	2.08	0.54
1:G:270:MET:HG2	1:G:286:ILE:HD12	1.88	0.54
1:G:180:VAL:HG12	1:G:401:TYR:CD1	2.43	0.54
1:A:50:LYS:HE3	1:H:366:GLU:OE2	2.08	0.53
1:L:332:LYS:HB3	1:L:333:PRO:HD2	1.90	0.53
1:L:181:SER:HB2	1:L:404:PRO:HA	1.89	0.53
1:I:246:LEU:HD23	1:I:256:GLU:HG3	1.89	0.53
1:E:246:LEU:HD23	1:E:256:GLU:HG3	1.90	0.53
1:E:153:ASP:HA	1:E:162:LYS:HE2	1.89	0.53
1:G:181:SER:HB2	1:G:404:PRO:HA	1.91	0.53
1:A:51:VAL:HG22	1:A:300:TYR:CZ	2.43	0.53
1:A:252:HIS:CD2	1:B:252:HIS:HD2	2.28	0.52
1:C:246:LEU:HB3	1:C:254:MET:HE1	1.90	0.52
1:L:117:ASN:HD22	1:L:120:ARG:NH1	2.07	0.52
1:L:13:GLY:O	1:L:17:MET:HG2	2.08	0.52
1:I:153:ASP:HA	1:I:162:LYS:HE2	1.91	0.52
1:F:88:LEU:HD23	1:F:88:LEU:N	2.24	0.52
1:F:153:ASP:HA	1:F:162:LYS:HE2	1.89	0.52

Continued on next page...

Continued from previous page...

Atom-1	Atom-2	Distance(Å)	Clash(Å)
1:G:90:HIS:HE1	1:G:318:ASP:OD2	1.92	0.52
1:A:280:MET:HG3	1:B:389:CYS:CB	2.39	0.52
1:L:48:ASN:OD1	1:L:51:VAL:HB	2.09	0.52
1:H:231:LEU:O	1:H:233:ARG:HD3	2.09	0.52
1:E:252:HIS:HD2	1:F:252:HIS:CD2	2.27	0.52
1:D:51:VAL:HG22	1:D:300:TYR:CZ	2.44	0.52
1:I:246:LEU:HB3	1:I:254:MET:HE1	1.92	0.51
1:G:231:LEU:O	1:G:233:ARG:HD3	2.10	0.51
1:I:88:LEU:N	1:I:88:LEU:HD23	2.25	0.51
1:L:278:LEU:HD13	1:L:282:ARG:HG2	1.92	0.51
1:F:246:LEU:HB3	1:F:254:MET:HE1	1.91	0.51
1:H:246:LEU:HB3	1:H:254:MET:HE1	1.91	0.51
1:C:492:LEU:O	1:C:496:ILE:HD12	2.11	0.51
1:C:251:ASN:O	1:C:252:HIS:HB2	2.11	0.51
1:A:90:HIS:HE1	1:A:318:ASP:OD2	1.93	0.51
1:G:353:ALA:CB	1:H:280:MET:HE1	2.41	0.50
1:F:251:ASN:O	1:F:252:HIS:CB	2.59	0.50
1:H:13:GLY:O	1:H:17:MET:HG2	2.11	0.50
1:I:280:MET:CG	1:L:389:CYS:HB3	2.31	0.50
1:F:4:LYS:C	1:F:5:CYS:HG	2.03	0.50
1:C:280:MET:HG3	1:D:389:CYS:CB	2.37	0.50
1:L:270:MET:HG2	1:L:286:ILE:HD12	1.94	0.50
1:A:252:HIS:HD2	1:B:252:HIS:CD2	2.29	0.50
1:I:231:LEU:O	1:I:233:ARG:HD3	2.12	0.50
1:A:489:VAL:N	1:A:490:PRO:HD2	2.27	0.50
1:D:28:LEU:HD11	1:D:454:MET:HE1	1.93	0.50
1:D:181:SER:HB2	1:D:404:PRO:HA	1.92	0.50
1:A:251:ASN:O	1:A:252:HIS:CB	2.59	0.50
1:B:332:LYS:HB3	1:B:333:PRO:HD2	1.94	0.50
1:C:88:LEU:H	1:C:88:LEU:HD23	1.77	0.49
1:I:430:THR:HB	1:I:441:GLU:OE1	2.12	0.49
1:I:278:LEU:HD13	1:I:282:ARG:HG2	1.94	0.49
1:H:4:LYS:CA	1:H:5:CYS:HG	2.12	0.49
1:E:4:LYS:C	1:E:5:CYS:HG	2.15	0.49
1:G:480:THR:HG22	1:G:482:LEU:N	2.26	0.49
1:A:246:LEU:HD23	1:A:256:GLU:HG3	1.95	0.49
1:E:251:ASN:O	1:E:252:HIS:HB2	2.12	0.49
1:E:90:HIS:HE1	1:E:318:ASP:OD2	1.95	0.49
1:C:392:GLN:NE2	1:D:274:PHE:H	1.96	0.49
1:L:4:LYS:C	1:L:5:CYS:SG	2.91	0.49
1:D:246:LEU:HB3	1:D:254:MET:HE1	1.95	0.49
1:L:38:ARG:NH2	1:L:41:GLY:O	2.46	0.49

Continued on next page...

Continued from previous page...

Atom-1	Atom-2	Distance(Å)	Clash(Å)
1:H:270:MET:HG2	1:H:286:ILE:HD12	1.94	0.49
1:E:180:VAL:HG12	1:E:401:TYR:CD1	2.48	0.49
1:F:51:VAL:O	1:F:332:LYS:NZ	2.46	0.49
1:E:13:GLY:O	1:E:17:MET:HG2	2.12	0.49
3:E:601:LDA:H112	3:E:601:LDA:H82	1.46	0.48
1:E:252:HIS:CD2	1:F:252:HIS:HD2	2.31	0.48
1:C:51:VAL:O	1:C:332:LYS:NZ	2.46	0.48
1:B:51:VAL:O	1:B:332:LYS:NZ	2.46	0.48
1:G:251:ASN:O	1:G:252:HIS:HB2	2.13	0.48
1:L:28:LEU:HD11	1:L:454:MET:HE1	1.95	0.48
1:D:270:MET:HG2	1:D:286:ILE:HD12	1.95	0.48
1:A:280:MET:HE3	1:A:280:MET:HB3	1.77	0.48
1:A:246:LEU:HB3	1:A:254:MET:HE1	1.95	0.48
1:G:32:VAL:HB	1:G:229:VAL:HG22	1.95	0.48
1:C:278:LEU:HD13	1:C:282:ARG:HG2	1.95	0.48
1:H:180:VAL:HG12	1:H:401:TYR:CD1	2.48	0.48
1:H:500:THR:HG22	1:H:500:THR:O	2.13	0.48
1:A:13:GLY:O	1:A:17:MET:HG2	2.14	0.48
1:F:190:LYS:HG3	1:F:191:GLN:N	2.27	0.48
1:L:90:HIS:HE1	1:L:318:ASP:OD2	1.96	0.48
1:L:180:VAL:HG12	1:L:401:TYR:CD1	2.49	0.48
1:L:251:ASN:O	1:L:252:HIS:HB2	2.14	0.48
1:L:280:MET:HB3	1:L:280:MET:HE3	1.72	0.48
1:A:88:LEU:HD23	1:A:88:LEU:N	2.29	0.48
1:I:180:VAL:HG12	1:I:401:TYR:CD1	2.49	0.47
1:L:427:GLU:H	1:L:427:GLU:HG2	1.37	0.47
1:C:246:LEU:HD23	1:C:256:GLU:HG3	1.96	0.47
1:G:51:VAL:O	1:G:332:LYS:NZ	2.47	0.47
1:A:332:LYS:HB3	1:A:333:PRO:HD2	1.96	0.47
1:D:427:GLU:H	1:D:427:GLU:HG2	1.33	0.47
1:E:46:LEU:HB3	1:E:54:VAL:HG12	1.95	0.47
1:L:489:VAL:N	1:L:490:PRO:HD2	2.29	0.47
1:B:32:VAL:HB	1:B:229:VAL:HG22	1.97	0.47
1:L:231:LEU:O	1:L:233:ARG:HD3	2.14	0.47
1:F:278:LEU:HD13	1:F:282:ARG:HG2	1.96	0.47
1:G:489:VAL:N	1:G:490:PRO:HD2	2.29	0.47
1:I:489:VAL:N	1:I:490:PRO:HD2	2.30	0.47
1:E:489:VAL:N	1:E:490:PRO:HD2	2.29	0.47
1:E:389:CYS:CB	1:F:280:MET:HG3	2.42	0.47
1:F:321:GLU:CD	1:F:321:GLU:H	2.18	0.47
1:H:88:LEU:HD23	1:H:88:LEU:N	2.30	0.47
1:C:38:ARG:NH2	1:C:41:GLY:O	2.46	0.46

Continued on next page...

Continued from previous page...

Atom-1	Atom-2	Distance(Å)	Clash(Å)
1:C:180:VAL:HG12	1:C:401:TYR:CD1	2.50	0.46
1:L:321:GLU:CD	1:L:321:GLU:H	2.19	0.46
3:B:601:LDA:H112	3:B:601:LDA:H82	1.48	0.46
1:G:246:LEU:HB3	1:G:254:MET:HE1	1.98	0.46
1:E:278:LEU:HD13	1:E:282:ARG:HG2	1.97	0.46
1:C:117:ASN:HD22	1:C:120:ARG:NH1	2.13	0.46
1:D:489:VAL:N	1:D:490:PRO:HD2	2.30	0.46
1:A:80:TYR:OH	1:A:209:LYS:HE2	2.15	0.46
1:F:489:VAL:N	1:F:490:PRO:HD2	2.30	0.46
1:G:392:GLN:NE2	1:H:274:PHE:H	2.00	0.46
1:L:246:LEU:HB3	1:L:254:MET:HE1	1.97	0.46
1:B:38:ARG:NH2	1:B:41:GLY:O	2.47	0.46
1:B:489:VAL:N	1:B:490:PRO:HD2	2.31	0.46
3:G:601:LDA:H112	3:G:601:LDA:H82	1.57	0.46
1:B:246:LEU:HB3	1:B:254:MET:HE1	1.97	0.46
1:B:88:LEU:H	1:B:88:LEU:HD23	1.80	0.46
1:C:153:ASP:HA	1:C:162:LYS:HE2	1.98	0.46
1:B:28:LEU:HD11	1:B:454:MET:HE1	1.97	0.46
1:B:190:LYS:HG3	1:B:191:GLN:N	2.30	0.46
1:H:51:VAL:O	1:H:332:LYS:NZ	2.49	0.46
1:A:480:THR:HG22	1:A:482:LEU:N	2.26	0.46
1:I:252:HIS:CD2	1:L:252:HIS:CD2	3.04	0.46
1:B:278:LEU:HD13	1:B:282:ARG:HG2	1.97	0.46
1:C:321:GLU:CD	1:C:321:GLU:H	2.19	0.46
1:D:321:GLU:H	1:D:321:GLU:CD	2.19	0.46
1:C:13:GLY:O	1:C:17:MET:HG2	2.16	0.46
1:I:251:ASN:O	1:I:252:HIS:HB2	2.16	0.45
1:I:274:PHE:H	1:L:392:GLN:NE2	1.97	0.45
1:E:270:MET:HG2	1:E:286:ILE:HD12	1.98	0.45
1:F:270:MET:HG2	1:F:286:ILE:HD12	1.98	0.45
1:D:90:HIS:HE1	1:D:318:ASP:OD2	1.98	0.45
1:E:28:LEU:HD11	1:E:454:MET:HE1	1.99	0.45
1:G:332:LYS:HB3	1:G:333:PRO:HD2	1.99	0.45
1:L:430:THR:HB	1:L:441:GLU:OE1	2.16	0.45
1:D:188:TYR:O	1:D:191:GLN:HG3	2.16	0.45
1:H:90:HIS:HE1	1:H:318:ASP:OD2	2.00	0.45
1:G:28:LEU:HD11	1:G:454:MET:HE1	1.99	0.45
1:H:489:VAL:N	1:H:490:PRO:HD2	2.31	0.45
1:I:427:GLU:HG2	1:I:427:GLU:H	1.29	0.45
1:I:117:ASN:HD22	1:I:120:ARG:HH11	1.65	0.45
1:C:327:THR:HG21	1:C:368:TYR:CE2	2.51	0.45
1:E:321:GLU:CD	1:E:321:GLU:H	2.19	0.45

Continued on next page...

Continued from previous page...

Atom-1	Atom-2	Distance(Å)	Clash(Å)
1:H:251:ASN:O	1:H:252:HIS:HB2	2.16	0.45
1:B:90:HIS:HE1	1:B:318:ASP:OD2	2.00	0.45
1:G:278:LEU:HD13	1:G:282:ARG:HG2	1.99	0.45
1:F:13:GLY:O	1:F:17:MET:HG2	2.16	0.45
1:B:246:LEU:HD22	1:B:254:MET:CE	2.45	0.45
1:D:246:LEU:HD22	1:D:254:MET:CE	2.44	0.45
1:G:280:MET:HE1	1:H:353:ALA:CB	2.47	0.45
1:D:251:ASN:O	1:D:252:HIS:HB2	2.16	0.45
1:H:454:MET:HE3	1:H:454:MET:HB2	1.68	0.45
1:G:246:LEU:HD23	1:G:256:GLU:HG3	1.99	0.45
1:B:231:LEU:O	1:B:233:ARG:HD3	2.17	0.45
1:L:238:ILE:HD12	1:L:272:ILE:HG21	1.98	0.45
1:I:90:HIS:HE1	1:I:318:ASP:OD2	2.00	0.45
1:D:4:LYS:CA	1:D:5:CYS:SG	3.04	0.45
1:G:246:LEU:HD22	1:G:254:MET:CE	2.44	0.45
1:F:38:ARG:NH2	1:F:41:GLY:O	2.49	0.45
1:C:165:ALA:O	1:C:168:PHE:HB3	2.17	0.45
1:B:321:GLU:CD	1:B:321:GLU:H	2.20	0.45
1:C:280:MET:HB3	1:C:280:MET:HE3	1.82	0.44
1:B:4:LYS:N	1:B:5:CYS:SG	2.90	0.44
1:A:389:CYS:HB2	1:B:280:MET:HG3	1.99	0.44
1:C:252:HIS:CD2	1:D:252:HIS:CD2	3.05	0.44
1:C:327:THR:HA	1:C:341:MET:O	2.18	0.44
1:F:180:VAL:HG12	1:F:401:TYR:CD1	2.52	0.44
1:F:427:GLU:H	1:F:427:GLU:HG2	1.35	0.44
1:D:4:LYS:CA	1:D:5:CYS:HG	2.30	0.44
1:L:88:LEU:N	1:L:88:LEU:HD23	2.32	0.44
1:B:427:GLU:HG2	1:B:427:GLU:H	1.37	0.44
1:C:188:TYR:O	1:C:191:GLN:HG3	2.17	0.44
1:A:321:GLU:CD	1:A:321:GLU:H	2.21	0.44
1:H:280:MET:HE3	1:H:280:MET:HB3	1.72	0.44
1:A:4:LYS:C	1:A:5:CYS:HG	2.21	0.44
1:C:251:ASN:O	1:C:252:HIS:CB	2.65	0.44
1:H:480:THR:HG22	1:H:482:LEU:N	2.25	0.44
1:A:50:LYS:HE3	1:H:366:GLU:CD	2.38	0.44
1:D:454:MET:HE3	1:D:456:LYS:HE2	2.00	0.44
1:L:327:THR:HA	1:L:341:MET:O	2.17	0.44
1:L:246:LEU:HD23	1:L:256:GLU:HG3	2.00	0.44
1:C:427:GLU:H	1:C:427:GLU:HG2	1.32	0.44
3:H:601:LDA:H22	3:H:601:LDA:HM13	1.81	0.44
1:E:251:ASN:O	1:E:252:HIS:CB	2.66	0.44
1:C:90:HIS:HE1	1:C:318:ASP:OD2	2.01	0.44

Continued on next page...

Continued from previous page...

Atom-1	Atom-2	Distance(Å)	Clash(Å)
3:D:601:LDA:H112	3:D:601:LDA:H82	1.53	0.43
1:H:246:LEU:HD22	1:H:254:MET:CE	2.47	0.43
1:C:336:ASN:O	1:C:337:TYR:C	2.55	0.43
1:F:246:LEU:HB3	1:F:254:MET:CE	2.47	0.43
1:H:240:GLN:OE1	1:H:419:ASP:HB3	2.19	0.43
1:H:494:ARG:HD3	1:H:494:ARG:HA	1.90	0.43
3:A:601:LDA:H82	3:A:601:LDA:H112	1.49	0.43
1:A:165:ALA:O	1:A:168:PHE:HB3	2.19	0.43
3:I:601:LDA:H82	3:I:601:LDA:H112	1.58	0.43
1:E:246:LEU:HD22	1:E:254:MET:CE	2.49	0.43
1:L:188:TYR:O	1:L:191:GLN:HG3	2.17	0.43
1:C:399:THR:OG1	1:C:400:THR:N	2.50	0.43
1:H:332:LYS:HB3	1:H:333:PRO:HD2	1.99	0.43
1:F:254:MET:HB3	1:F:254:MET:HE2	1.90	0.43
1:C:489:VAL:N	1:C:490:PRO:HD2	2.33	0.43
1:G:454:MET:HE3	1:G:456:LYS:HE2	2.01	0.43
1:F:32:VAL:HB	1:F:229:VAL:HG22	2.00	0.43
1:I:46:LEU:HB3	1:I:54:VAL:HG12	2.01	0.43
1:E:270:MET:HE1	1:E:287:THR:HG22	2.01	0.43
1:L:10:VAL:HG22	1:L:235:VAL:HG21	2.01	0.43
1:L:32:VAL:HB	1:L:229:VAL:HG22	2.00	0.43
1:F:341:MET:HB3	1:F:341:MET:HE2	1.88	0.43
1:A:454:MET:HE3	1:A:454:MET:HB2	1.82	0.43
1:D:38:ARG:NH2	1:D:41:GLY:O	2.50	0.43
1:L:253:GLU:OE1	1:L:255:TYR:OH	2.21	0.43
1:B:280:MET:HE3	1:B:280:MET:HB3	1.71	0.42
1:C:270:MET:O	1:D:271:LYS:HG2	2.19	0.42
1:G:251:ASN:O	1:G:252:HIS:CB	2.67	0.42
1:I:38:ARG:NH2	1:I:41:GLY:O	2.48	0.42
1:I:321:GLU:CD	1:I:321:GLU:H	2.22	0.42
1:I:454:MET:HB2	1:I:454:MET:HE3	1.74	0.42
1:G:10:VAL:HG22	1:G:235:VAL:HG21	2.00	0.42
1:E:32:VAL:HB	1:E:229:VAL:HG22	2.01	0.42
1:B:254:MET:HE2	1:B:254:MET:HB3	1.85	0.42
1:E:246:LEU:HB3	1:E:254:MET:HE1	2.01	0.42
1:I:51:VAL:O	1:I:332:LYS:NZ	2.52	0.42
1:H:97:TYR:HA	1:H:98:PRO:HD3	1.85	0.42
1:D:80:TYR:OH	1:D:209:LYS:HE2	2.19	0.42
1:C:231:LEU:O	1:C:233:ARG:HD3	2.19	0.42
1:A:231:LEU:O	1:A:233:ARG:HD3	2.19	0.42
1:B:480:THR:HG22	1:B:482:LEU:N	2.29	0.42
1:I:480:THR:HG22	1:I:482:LEU:N	2.30	0.42

Continued on next page...

Continued from previous page...

Atom-1	Atom-2	Distance(Å)	Clash(Å)
1:A:51:VAL:O	1:A:332:LYS:NZ	2.52	0.42
1:B:327:THR:HG21	1:B:368:TYR:CE2	2.54	0.42
1:F:90:HIS:HE1	1:F:318:ASP:OD2	2.02	0.42
1:H:321:GLU:CD	1:H:321:GLU:H	2.23	0.42
1:I:270:MET:HG2	1:I:286:ILE:HD12	2.00	0.42
1:H:176:GLU:HB2	1:H:179:GLU:HG3	2.01	0.42
1:G:46:LEU:HB3	1:G:54:VAL:HG12	2.01	0.42
1:E:480:THR:HG22	1:E:482:LEU:N	2.27	0.42
1:I:280:MET:HG3	1:L:389:CYS:HB2	1.93	0.42
1:I:165:ALA:O	1:I:168:PHE:HB3	2.20	0.42
1:D:323:PRO:HD2	1:D:367:LEU:HD22	2.01	0.42
1:G:97:TYR:HA	1:G:98:PRO:HD3	1.88	0.42
1:F:246:LEU:HD22	1:F:254:MET:CE	2.49	0.42
1:D:51:VAL:O	1:D:332:LYS:NZ	2.52	0.42
1:G:327:THR:HG21	1:G:368:TYR:CE2	2.55	0.42
1:H:246:LEU:HD23	1:H:256:GLU:HG3	2.01	0.42
1:L:51:VAL:O	1:L:332:LYS:NZ	2.53	0.42
1:F:332:LYS:HB3	1:F:333:PRO:HD2	2.02	0.42
1:B:246:LEU:HD23	1:B:256:GLU:HG3	2.01	0.42
1:G:90:HIS:CE1	1:G:318:ASP:OD2	2.73	0.42
1:I:251:ASN:O	1:I:252:HIS:CB	2.68	0.42
3:L:601:LDA:H112	3:L:601:LDA:H82	1.52	0.41
1:D:246:LEU:HD23	1:D:256:GLU:HG3	2.01	0.41
1:C:270:MET:HE1	1:C:287:THR:HG22	2.02	0.41
1:A:90:HIS:CE1	1:A:318:ASP:OD2	2.72	0.41
1:C:280:MET:HE1	1:D:353:ALA:CB	2.44	0.41
1:L:251:ASN:O	1:L:252:HIS:CB	2.68	0.41
1:B:188:TYR:O	1:B:191:GLN:HG3	2.20	0.41
1:F:454:MET:HE3	1:F:454:MET:HB2	1.72	0.41
1:B:88:LEU:N	1:B:88:LEU:CD2	2.83	0.41
1:D:251:ASN:O	1:D:252:HIS:CB	2.68	0.41
1:B:180:VAL:HG12	1:B:401:TYR:CD1	2.56	0.41
1:C:454:MET:HB2	1:C:454:MET:HE3	1.80	0.41
1:D:180:VAL:HG12	1:D:401:TYR:CD1	2.55	0.41
1:I:280:MET:HE3	1:I:280:MET:HB3	1.75	0.41
1:L:327:THR:HG21	1:L:368:TYR:CE2	2.55	0.41
1:D:369:ALA:O	1:I:138:PRO:HB3	2.21	0.41
1:B:117:ASN:HD22	1:B:120:ARG:HH11	1.69	0.41
1:H:10:VAL:HG22	1:H:235:VAL:HG21	2.02	0.41
1:F:80:TYR:OH	1:F:209:LYS:HE2	2.20	0.41
1:F:10:VAL:HG22	1:F:235:VAL:HG21	2.03	0.41
1:E:332:LYS:HB3	1:E:333:PRO:HD2	2.02	0.41

Continued on next page...

Continued from previous page...

Atom-1	Atom-2	Distance(Å)	Clash(Å)
1:I:332:LYS:HB3	1:I:333:PRO:HD2	2.03	0.41
1:I:97:TYR:HA	1:I:98:PRO:HD3	1.85	0.41
1:I:253:GLU:OE1	1:I:255:TYR:OH	2.27	0.41
1:G:88:LEU:HD23	1:G:88:LEU:N	2.36	0.41
1:G:427:GLU:H	1:G:427:GLU:HG2	1.40	0.41
1:E:240:GLN:OE1	1:E:419:ASP:HB3	2.21	0.41
1:C:111:THR:HA	1:C:158:THR:HG21	2.03	0.41
1:L:46:LEU:HB3	1:L:54:VAL:HG12	2.02	0.41
1:G:88:LEU:O	1:G:98:PRO:HA	2.20	0.41
1:A:440:VAL:O	1:A:444:GLU:HG3	2.20	0.41
1:F:97:TYR:HA	1:F:98:PRO:HD3	1.88	0.41
1:G:252:HIS:CD2	1:H:252:HIS:CD2	3.09	0.40
1:L:236:ILE:HG21	1:L:250:LEU:HD13	2.03	0.40
1:F:46:LEU:HB3	1:F:54:VAL:HG12	2.03	0.40
1:D:169:VAL:HG22	1:D:185:PHE:CZ	2.55	0.40
1:L:165:ALA:O	1:L:168:PHE:HB3	2.20	0.40
1:D:375:LEU:HD21	1:I:130:PRO:CD	2.49	0.40
1:B:251:ASN:O	1:B:252:HIS:HB2	2.20	0.40
1:L:454:MET:HE3	1:L:456:LYS:HE2	2.02	0.40
1:L:90:HIS:CE1	1:L:318:ASP:OD2	2.74	0.40
1:B:13:GLY:O	1:B:17:MET:HG2	2.21	0.40
1:H:127:ARG:HD2	1:H:127:ARG:HH11	1.72	0.40
1:D:88:LEU:N	1:D:88:LEU:HD23	2.36	0.40
1:G:265:PRO:O	1:G:266:PRO:C	2.60	0.40
1:E:51:VAL:O	1:E:332:LYS:NZ	2.54	0.40
1:L:126:GLY:O	1:L:190:LYS:HD3	2.21	0.40
1:C:46:LEU:HB3	1:C:54:VAL:HG12	2.03	0.40
1:A:92:VAL:HG23	1:A:318:ASP:HB2	2.03	0.40
1:D:327:THR:HG21	1:D:368:TYR:CE2	2.55	0.40

All (1) symmetry-related close contacts are listed below. The label for Atom-2 includes the symmetry operator and encoded unit-cell translations to be applied.

Atom-1	Atom-2	Distance(Å)	Clash(Å)
1:E:49:GLN:NE2	1:G:220:ARG:NE[1_545]	1.98	0.22

5.3 Torsion angles

5.3.1 Protein backbone ⓘ

In the following table, the Percentiles column shows the percent Ramachandran outliers of the chain as a percentile score with respect to all X-ray entries followed by that with respect to entries

of similar resolution. The Analysed column shows the number of residues for which the backbone conformation was analysed, and the total number of residues.

Mol	Chain	Analysed	Favoured	Allowed	Outliers	Percentiles	
1	A	495/520 (95%)	470 (95%)	21 (4%)	4 (1%)	27	74
1	B	492/520 (95%)	464 (94%)	24 (5%)	4 (1%)	27	74
1	C	496/520 (95%)	469 (95%)	23 (5%)	4 (1%)	27	74
1	D	492/520 (95%)	464 (94%)	24 (5%)	4 (1%)	27	74
1	E	496/520 (95%)	473 (95%)	19 (4%)	4 (1%)	27	74
1	F	495/520 (95%)	467 (94%)	22 (4%)	6 (1%)	19	62
1	G	492/520 (95%)	466 (95%)	22 (4%)	4 (1%)	27	74
1	H	496/520 (95%)	468 (94%)	24 (5%)	4 (1%)	27	74
1	I	495/520 (95%)	466 (94%)	23 (5%)	6 (1%)	19	62
1	L	495/520 (95%)	468 (94%)	23 (5%)	4 (1%)	27	74
All	All	4944/5200 (95%)	4675 (95%)	225 (5%)	44 (1%)	25	71

All (44) Ramachandran outliers are listed below:

Mol	Chain	Res	Type
1	A	132	ASP
1	A	460	ASP
1	B	132	ASP
1	B	460	ASP
1	C	132	ASP
1	C	460	ASP
1	D	132	ASP
1	D	460	ASP
1	E	132	ASP
1	E	460	ASP
1	F	460	ASP
1	G	132	ASP
1	G	460	ASP
1	H	132	ASP
1	H	460	ASP
1	I	132	ASP
1	I	460	ASP
1	L	132	ASP
1	L	460	ASP
1	A	252	HIS
1	F	132	ASP
1	F	252	HIS

Continued on next page...

Continued from previous page...

Mol	Chain	Res	Type
1	A	52	LYS
1	B	52	LYS
1	B	252	HIS
1	C	52	LYS
1	C	252	HIS
1	D	52	LYS
1	D	252	HIS
1	E	52	LYS
1	E	252	HIS
1	F	5	CYS
1	F	52	LYS
1	G	52	LYS
1	G	252	HIS
1	H	52	LYS
1	H	252	HIS
1	I	52	LYS
1	I	252	HIS
1	L	52	LYS
1	L	252	HIS
1	F	499	THR
1	I	5	CYS
1	I	419	ASP

5.3.2 Protein sidechains ⓘ

In the following table, the Percentiles column shows the percent sidechain outliers of the chain as a percentile score with respect to all X-ray entries followed by that with respect to entries of similar resolution. The Analysed column shows the number of residues for which the sidechain conformation was analysed, and the total number of residues.

Mol	Chain	Analysed	Rotameric	Outliers	Percentiles	
1	A	426/444 (96%)	391 (92%)	35 (8%)	17	53
1	B	423/444 (95%)	386 (91%)	37 (9%)	15	49
1	C	426/444 (96%)	388 (91%)	38 (9%)	14	47
1	D	423/444 (95%)	387 (92%)	36 (8%)	15	51
1	E	426/444 (96%)	391 (92%)	35 (8%)	17	53
1	F	426/444 (96%)	387 (91%)	39 (9%)	13	45
1	G	423/444 (95%)	388 (92%)	35 (8%)	16	53
1	H	426/444 (96%)	388 (91%)	38 (9%)	14	47

Continued on next page...

Continued from previous page...

Mol	Chain	Analysed	Rotameric	Outliers	Percentiles	
1	I	426/444 (96%)	386 (91%)	40 (9%)	13	43
1	L	426/444 (96%)	387 (91%)	39 (9%)	13	45
All	All	4251/4440 (96%)	3879 (91%)	372 (9%)	14	49

All (372) residues with a non-rotameric sidechain are listed below:

Mol	Chain	Res	Type
1	A	5	CYS
1	A	38	ARG
1	A	52	LYS
1	A	88	LEU
1	A	106	VAL
1	A	128	GLU
1	A	132	ASP
1	A	146	MET
1	A	149	LYS
1	A	160	SER
1	A	181	SER
1	A	190	LYS
1	A	218	SER
1	A	232	GLU
1	A	242	ARG
1	A	243	GLU
1	A	280	MET
1	A	308	LYS
1	A	332	LYS
1	A	361	LEU
1	A	374	SER
1	A	375	LEU
1	A	376	GLU
1	A	379	GLU
1	A	381	VAL
1	A	394	SER
1	A	397	CYS
1	A	398	TYR
1	A	412	ARG
1	A	427	GLU
1	A	461	GLU
1	A	464	GLN
1	A	471	ASP
1	A	475	GLN

Continued on next page...

Continued from previous page...

Mol	Chain	Res	Type
1	A	495	LEU
1	B	5	CYS
1	B	38	ARG
1	B	52	LYS
1	B	88	LEU
1	B	106	VAL
1	B	128	GLU
1	B	131	SER
1	B	132	ASP
1	B	146	MET
1	B	149	LYS
1	B	160	SER
1	B	181	SER
1	B	190	LYS
1	B	218	SER
1	B	232	GLU
1	B	242	ARG
1	B	243	GLU
1	B	266	PRO
1	B	280	MET
1	B	308	LYS
1	B	330	ASP
1	B	332	LYS
1	B	361	LEU
1	B	374	SER
1	B	375	LEU
1	B	376	GLU
1	B	379	GLU
1	B	381	VAL
1	B	394	SER
1	B	397	CYS
1	B	412	ARG
1	B	427	GLU
1	B	461	GLU
1	B	464	GLN
1	B	471	ASP
1	B	475	GLN
1	B	495	LEU
1	C	4	LYS
1	C	5	CYS
1	C	38	ARG
1	C	52	LYS

Continued on next page...

Continued from previous page...

Mol	Chain	Res	Type
1	C	88	LEU
1	C	106	VAL
1	C	128	GLU
1	C	131	SER
1	C	132	ASP
1	C	146	MET
1	C	149	LYS
1	C	160	SER
1	C	181	SER
1	C	190	LYS
1	C	218	SER
1	C	232	GLU
1	C	242	ARG
1	C	243	GLU
1	C	280	MET
1	C	282	ARG
1	C	308	LYS
1	C	332	LYS
1	C	361	LEU
1	C	374	SER
1	C	375	LEU
1	C	376	GLU
1	C	379	GLU
1	C	381	VAL
1	C	397	CYS
1	C	398	TYR
1	C	412	ARG
1	C	427	GLU
1	C	461	GLU
1	C	464	GLN
1	C	471	ASP
1	C	475	GLN
1	C	495	LEU
1	C	498	LEU
1	D	5	CYS
1	D	38	ARG
1	D	52	LYS
1	D	88	LEU
1	D	128	GLU
1	D	131	SER
1	D	146	MET
1	D	149	LYS

Continued on next page...

Continued from previous page...

Mol	Chain	Res	Type
1	D	160	SER
1	D	181	SER
1	D	190	LYS
1	D	218	SER
1	D	232	GLU
1	D	242	ARG
1	D	243	GLU
1	D	280	MET
1	D	282	ARG
1	D	308	LYS
1	D	361	LEU
1	D	374	SER
1	D	375	LEU
1	D	376	GLU
1	D	379	GLU
1	D	381	VAL
1	D	394	SER
1	D	397	CYS
1	D	398	TYR
1	D	412	ARG
1	D	427	GLU
1	D	461	GLU
1	D	464	GLN
1	D	471	ASP
1	D	475	GLN
1	D	494	ARG
1	D	495	LEU
1	D	496	ILE
1	E	5	CYS
1	E	38	ARG
1	E	52	LYS
1	E	88	LEU
1	E	106	VAL
1	E	128	GLU
1	E	132	ASP
1	E	146	MET
1	E	149	LYS
1	E	160	SER
1	E	181	SER
1	E	190	LYS
1	E	218	SER
1	E	232	GLU

Continued on next page...

Continued from previous page...

Mol	Chain	Res	Type
1	E	242	ARG
1	E	243	GLU
1	E	280	MET
1	E	308	LYS
1	E	332	LYS
1	E	361	LEU
1	E	374	SER
1	E	375	LEU
1	E	376	GLU
1	E	379	GLU
1	E	381	VAL
1	E	394	SER
1	E	397	CYS
1	E	412	ARG
1	E	427	GLU
1	E	461	GLU
1	E	464	GLN
1	E	471	ASP
1	E	475	GLN
1	E	494	ARG
1	E	495	LEU
1	F	5	CYS
1	F	38	ARG
1	F	52	LYS
1	F	88	LEU
1	F	106	VAL
1	F	128	GLU
1	F	131	SER
1	F	132	ASP
1	F	146	MET
1	F	149	LYS
1	F	160	SER
1	F	181	SER
1	F	190	LYS
1	F	218	SER
1	F	232	GLU
1	F	242	ARG
1	F	243	GLU
1	F	280	MET
1	F	282	ARG
1	F	291	LEU
1	F	308	LYS

Continued on next page...

Continued from previous page...

Mol	Chain	Res	Type
1	F	332	LYS
1	F	361	LEU
1	F	374	SER
1	F	375	LEU
1	F	376	GLU
1	F	379	GLU
1	F	381	VAL
1	F	394	SER
1	F	397	CYS
1	F	398	TYR
1	F	412	ARG
1	F	427	GLU
1	F	461	GLU
1	F	464	GLN
1	F	471	ASP
1	F	475	GLN
1	F	498	LEU
1	F	499	THR
1	G	5	CYS
1	G	38	ARG
1	G	52	LYS
1	G	88	LEU
1	G	106	VAL
1	G	128	GLU
1	G	132	ASP
1	G	146	MET
1	G	149	LYS
1	G	160	SER
1	G	181	SER
1	G	190	LYS
1	G	218	SER
1	G	232	GLU
1	G	242	ARG
1	G	243	GLU
1	G	280	MET
1	G	308	LYS
1	G	332	LYS
1	G	361	LEU
1	G	374	SER
1	G	375	LEU
1	G	376	GLU
1	G	379	GLU

Continued on next page...

Continued from previous page...

Mol	Chain	Res	Type
1	G	381	VAL
1	G	397	CYS
1	G	412	ARG
1	G	427	GLU
1	G	430	THR
1	G	461	GLU
1	G	464	GLN
1	G	471	ASP
1	G	475	GLN
1	G	495	LEU
1	G	496	ILE
1	H	4	LYS
1	H	5	CYS
1	H	38	ARG
1	H	51	VAL
1	H	52	LYS
1	H	88	LEU
1	H	106	VAL
1	H	128	GLU
1	H	131	SER
1	H	132	ASP
1	H	146	MET
1	H	149	LYS
1	H	160	SER
1	H	181	SER
1	H	190	LYS
1	H	218	SER
1	H	232	GLU
1	H	242	ARG
1	H	243	GLU
1	H	280	MET
1	H	308	LYS
1	H	332	LYS
1	H	361	LEU
1	H	374	SER
1	H	375	LEU
1	H	376	GLU
1	H	379	GLU
1	H	381	VAL
1	H	394	SER
1	H	397	CYS
1	H	412	ARG

Continued on next page...

Continued from previous page...

Mol	Chain	Res	Type
1	H	427	GLU
1	H	430	THR
1	H	461	GLU
1	H	464	GLN
1	H	471	ASP
1	H	475	GLN
1	H	496	ILE
1	I	4	LYS
1	I	5	CYS
1	I	38	ARG
1	I	52	LYS
1	I	88	LEU
1	I	106	VAL
1	I	128	GLU
1	I	131	SER
1	I	132	ASP
1	I	146	MET
1	I	149	LYS
1	I	160	SER
1	I	181	SER
1	I	190	LYS
1	I	218	SER
1	I	232	GLU
1	I	242	ARG
1	I	243	GLU
1	I	280	MET
1	I	282	ARG
1	I	308	LYS
1	I	332	LYS
1	I	361	LEU
1	I	374	SER
1	I	375	LEU
1	I	376	GLU
1	I	379	GLU
1	I	381	VAL
1	I	394	SER
1	I	397	CYS
1	I	398	TYR
1	I	412	ARG
1	I	427	GLU
1	I	430	THR
1	I	461	GLU

Continued on next page...

Continued from previous page...

Mol	Chain	Res	Type
1	I	464	GLN
1	I	471	ASP
1	I	475	GLN
1	I	495	LEU
1	I	500	THR
1	L	4	LYS
1	L	5	CYS
1	L	31	VAL
1	L	38	ARG
1	L	52	LYS
1	L	88	LEU
1	L	106	VAL
1	L	128	GLU
1	L	132	ASP
1	L	146	MET
1	L	149	LYS
1	L	160	SER
1	L	181	SER
1	L	190	LYS
1	L	218	SER
1	L	232	GLU
1	L	242	ARG
1	L	243	GLU
1	L	280	MET
1	L	282	ARG
1	L	308	LYS
1	L	332	LYS
1	L	361	LEU
1	L	374	SER
1	L	375	LEU
1	L	376	GLU
1	L	379	GLU
1	L	381	VAL
1	L	394	SER
1	L	397	CYS
1	L	398	TYR
1	L	412	ARG
1	L	427	GLU
1	L	430	THR
1	L	461	GLU
1	L	464	GLN
1	L	471	ASP

Continued on next page...

Continued from previous page...

Mol	Chain	Res	Type
1	L	475	GLN
1	L	494	ARG

Some sidechains can be flipped to improve hydrogen bonding and reduce clashes. All (48) such sidechains are listed below:

Mol	Chain	Res	Type
1	A	90	HIS
1	A	117	ASN
1	A	252	HIS
1	A	382	HIS
1	A	392	GLN
1	B	90	HIS
1	B	117	ASN
1	B	252	HIS
1	B	392	GLN
1	C	90	HIS
1	C	117	ASN
1	C	170	ASN
1	C	382	HIS
1	C	392	GLN
1	D	90	HIS
1	D	117	ASN
1	D	170	ASN
1	D	382	HIS
1	D	392	GLN
1	E	90	HIS
1	E	117	ASN
1	E	252	HIS
1	E	382	HIS
1	E	392	GLN
1	F	90	HIS
1	F	117	ASN
1	F	252	HIS
1	F	382	HIS
1	F	392	GLN
1	G	90	HIS
1	G	117	ASN
1	G	170	ASN
1	G	252	HIS
1	G	382	HIS
1	G	392	GLN
1	H	90	HIS

Continued on next page...

Continued from previous page...

Mol	Chain	Res	Type
1	H	117	ASN
1	H	382	HIS
1	H	392	GLN
1	I	90	HIS
1	I	117	ASN
1	I	170	ASN
1	I	252	HIS
1	I	392	GLN
1	L	90	HIS
1	L	117	ASN
1	L	382	HIS
1	L	392	GLN

5.3.3 RNA ⓘ

There are no RNA chains in this entry.

5.4 Non-standard residues in protein, DNA, RNA chains ⓘ

There are no non-standard protein/DNA/RNA residues in this entry.

5.5 Carbohydrates ⓘ

There are no carbohydrates in this entry.

5.6 Ligand geometry ⓘ

20 ligands are modelled in this entry.

In the following table, the Counts columns list the number of bonds (or angles) for which Mogul statistics could be retrieved, the number of bonds (or angles) that are observed in the model and the number of bonds (or angles) that are defined in the chemical component dictionary. The Link column lists molecule types, if any, to which the group is linked. The Z score for a bond length (or angle) is the number of standard deviations the observed value is removed from the expected value. A bond length (or angle) with $|Z| > 2$ is considered an outlier worth inspection. RMSZ is the root-mean-square of all Z scores of the bond lengths (or angles).

Mol	Type	Chain	Res	Link	Bond lengths			Bond angles		
					Counts	RMSZ	# $ Z > 2$	Counts	RMSZ	# $ Z > 2$
2	FAD	A	600	1	58,58,58	1.08	5 (8%)	85,89,89	1.98	16 (18%)

Mol	Type	Chain	Res	Link	Bond lengths			Bond angles		
					Counts	RMSZ	# Z > 2	Counts	RMSZ	# Z > 2
3	LDA	A	601	-	15,15,15	3.77	3 (20%)	17,17,17	1.53	3 (17%)
2	FAD	B	600	1	58,58,58	1.09	5 (8%)	85,89,89	1.78	15 (17%)
3	LDA	B	601	-	15,15,15	3.31	2 (13%)	17,17,17	1.39	2 (11%)
2	FAD	C	600	1	58,58,58	1.06	4 (6%)	85,89,89	1.81	12 (14%)
3	LDA	C	601	-	15,15,15	3.41	2 (13%)	17,17,17	1.42	2 (11%)
2	FAD	D	600	1	58,58,58	1.11	5 (8%)	85,89,89	2.00	14 (16%)
3	LDA	D	601	-	15,15,15	3.19	1 (6%)	17,17,17	1.19	1 (5%)
2	FAD	E	600	1	58,58,58	1.20	6 (10%)	85,89,89	1.86	15 (17%)
3	LDA	E	601	-	15,15,15	3.46	2 (13%)	17,17,17	1.77	3 (17%)
2	FAD	F	600	1	58,58,58	1.05	4 (6%)	85,89,89	1.85	15 (17%)
3	LDA	F	601	-	15,15,15	3.21	2 (13%)	17,17,17	1.31	1 (5%)
2	FAD	G	600	1	58,58,58	1.14	4 (6%)	85,89,89	1.77	14 (16%)
3	LDA	G	601	-	15,15,15	3.72	3 (20%)	17,17,17	1.63	3 (17%)
2	FAD	H	600	1	58,58,58	1.06	4 (6%)	85,89,89	1.77	14 (16%)
3	LDA	H	601	-	15,15,15	3.54	3 (20%)	17,17,17	1.30	2 (11%)
2	FAD	I	600	1	58,58,58	1.11	6 (10%)	85,89,89	1.69	13 (15%)
3	LDA	I	601	-	15,15,15	3.33	1 (6%)	17,17,17	1.53	3 (17%)
2	FAD	L	600	1	58,58,58	1.05	4 (6%)	85,89,89	1.99	18 (21%)
3	LDA	L	601	-	15,15,15	3.66	2 (13%)	17,17,17	2.01	3 (17%)

In the following table, the Chirals column lists the number of chiral outliers, the number of chiral centers analysed, the number of these observed in the model and the number defined in the chemical component dictionary. Similar counts are reported in the Torsion and Rings columns. '-' means no outliers of that kind were identified.

Mol	Type	Chain	Res	Link	Chirals	Torsions	Rings
2	FAD	A	600	1	-	0/34/50/50	0/1/6/6
3	LDA	A	601	-	-	0/13/13/13	0/0/0/0
2	FAD	B	600	1	-	0/34/50/50	0/1/6/6
3	LDA	B	601	-	-	0/13/13/13	0/0/0/0
2	FAD	C	600	1	-	0/34/50/50	0/1/6/6
3	LDA	C	601	-	-	0/13/13/13	0/0/0/0
2	FAD	D	600	1	-	0/34/50/50	0/1/6/6
3	LDA	D	601	-	-	0/13/13/13	0/0/0/0
2	FAD	E	600	1	-	0/34/50/50	0/1/6/6
3	LDA	E	601	-	-	0/13/13/13	0/0/0/0
2	FAD	F	600	1	-	0/34/50/50	0/1/6/6
3	LDA	F	601	-	-	0/13/13/13	0/0/0/0

Continued on next page...

Continued from previous page...

Mol	Type	Chain	Res	Link	Chirals	Torsions	Rings
2	FAD	G	600	1	-	0/34/50/50	0/1/6/6
3	LDA	G	601	-	-	0/13/13/13	0/0/0/0
2	FAD	H	600	1	-	0/34/50/50	0/1/6/6
3	LDA	H	601	-	-	0/13/13/13	0/0/0/0
2	FAD	I	600	1	-	0/34/50/50	0/1/6/6
3	LDA	I	601	-	-	0/13/13/13	0/0/0/0
2	FAD	L	600	1	-	0/34/50/50	0/1/6/6
3	LDA	L	601	-	-	0/13/13/13	0/0/0/0

All (68) bond length outliers are listed below:

Mol	Chain	Res	Type	Atoms	Z	Observed(Å)	Ideal(Å)
3	A	601	LDA	O1-N1	-14.11	1.26	1.39
3	G	601	LDA	O1-N1	-13.89	1.26	1.39
3	L	601	LDA	O1-N1	-13.55	1.26	1.39
3	H	601	LDA	O1-N1	-13.19	1.27	1.39
3	E	601	LDA	O1-N1	-12.91	1.27	1.39
3	C	601	LDA	O1-N1	-12.79	1.27	1.39
3	I	601	LDA	O1-N1	-12.66	1.27	1.39
3	B	601	LDA	O1-N1	-12.28	1.27	1.39
3	D	601	LDA	O1-N1	-12.13	1.28	1.39
3	F	601	LDA	O1-N1	-12.05	1.28	1.39
2	E	600	FAD	C2A-N3A	4.05	1.40	1.32
3	L	601	LDA	C1-N1	-3.89	1.44	1.51
2	L	600	FAD	C2A-N3A	3.87	1.39	1.32
2	D	600	FAD	C2A-N3A	3.73	1.39	1.32
2	A	600	FAD	C2A-N3A	3.38	1.38	1.32
2	I	600	FAD	C2A-N3A	3.33	1.38	1.32
2	G	600	FAD	C4-C4X	-3.24	1.35	1.41
2	F	600	FAD	C2A-N3A	3.20	1.38	1.32
2	H	600	FAD	C2A-N3A	3.13	1.38	1.32
2	D	600	FAD	C2A-N1A	3.04	1.39	1.33
2	E	600	FAD	C6-C5X	-3.04	1.38	1.41
2	C	600	FAD	C2A-N3A	3.03	1.38	1.32
3	B	601	LDA	C1-N1	-3.02	1.45	1.51
2	G	600	FAD	C6-C5X	-3.01	1.38	1.41
2	G	600	FAD	C2A-N3A	2.98	1.38	1.32
2	F	600	FAD	C6-C5X	-2.94	1.38	1.41
2	D	600	FAD	C6-C5X	-2.87	1.38	1.41
3	A	601	LDA	C1-N1	-2.81	1.46	1.51
2	B	600	FAD	C6-C5X	-2.81	1.38	1.41
2	I	600	FAD	C2A-N1A	2.78	1.39	1.33

Continued on next page...

Continued from previous page...

Mol	Chain	Res	Type	Atoms	Z	Observed(Å)	Ideal(Å)
3	E	601	LDA	C1-N1	-2.77	1.46	1.51
2	C	600	FAD	C6-C5X	-2.76	1.38	1.41
2	B	600	FAD	C4-C4X	-2.72	1.36	1.41
2	G	600	FAD	C2A-N1A	2.67	1.39	1.33
3	H	601	LDA	C1-N1	-2.66	1.46	1.51
2	A	600	FAD	C6-C5X	-2.65	1.38	1.41
2	I	600	FAD	C4-C4X	-2.64	1.36	1.41
3	F	601	LDA	C1-N1	-2.57	1.46	1.51
3	G	601	LDA	C1-N1	-2.51	1.46	1.51
2	E	600	FAD	C4-C4X	-2.50	1.37	1.41
2	B	600	FAD	C2A-N1A	2.48	1.38	1.33
2	B	600	FAD	C2A-N3A	2.46	1.37	1.32
2	I	600	FAD	C6-C5X	-2.46	1.38	1.41
2	F	600	FAD	C4-C4X	-2.43	1.37	1.41
2	L	600	FAD	C6-C5X	-2.42	1.38	1.41
2	C	600	FAD	C2A-N1A	2.42	1.38	1.33
2	E	600	FAD	C2A-N1A	2.41	1.38	1.33
3	C	601	LDA	C1-N1	-2.40	1.46	1.51
2	A	600	FAD	C2A-N1A	2.40	1.38	1.33
2	I	600	FAD	C9A-C5X	-2.34	1.37	1.42
2	L	600	FAD	C2A-N1A	2.32	1.38	1.33
2	E	600	FAD	C2B-C1B	-2.32	1.50	1.53
2	H	600	FAD	C9A-C5X	-2.31	1.37	1.42
2	A	600	FAD	C4-C4X	-2.28	1.37	1.41
2	F	600	FAD	C2A-N1A	2.27	1.38	1.33
2	E	600	FAD	C9A-C5X	-2.25	1.37	1.42
2	C	600	FAD	C9A-C5X	-2.25	1.37	1.42
2	H	600	FAD	C2A-N1A	2.25	1.38	1.33
2	A	600	FAD	C4X-C10	-2.18	1.37	1.40
2	D	600	FAD	O4B-C4B	-2.15	1.40	1.45
2	H	600	FAD	C6-C5X	-2.15	1.39	1.41
3	G	601	LDA	CM1-N1	-2.13	1.46	1.49
2	D	600	FAD	C4-C4X	-2.11	1.37	1.41
3	A	601	LDA	CM2-N1	-2.10	1.46	1.49
2	L	600	FAD	C1'-N10	2.05	1.50	1.48
3	H	601	LDA	CM1-N1	-2.05	1.46	1.49
2	B	600	FAD	C9A-C5X	-2.04	1.38	1.42
2	I	600	FAD	C4X-C10	-2.01	1.37	1.40

All (169) bond angle outliers are listed below:

Continued on next page...

Continued from previous page...

Mol	Chain	Res	Type	Atoms	Z	Observed(°)	Ideal(°)
-----	-------	-----	------	-------	---	-------------	----------

Mol	Chain	Res	Type	Atoms	Z	Observed(°)	Ideal(°)
2	D	600	FAD	N3A-C2A-N1A	-10.16	120.21	128.71
2	A	600	FAD	N3A-C2A-N1A	-9.84	120.48	128.71
2	L	600	FAD	N3A-C2A-N1A	-9.72	120.58	128.71
2	B	600	FAD	N3A-C2A-N1A	-9.16	121.05	128.71
2	C	600	FAD	N3A-C2A-N1A	-8.88	121.28	128.71
2	G	600	FAD	N3A-C2A-N1A	-8.71	121.43	128.71
2	F	600	FAD	N3A-C2A-N1A	-8.67	121.46	128.71
2	E	600	FAD	N3A-C2A-N1A	-8.46	121.64	128.71
2	H	600	FAD	N3A-C2A-N1A	-7.92	122.09	128.71
2	I	600	FAD	N3A-C2A-N1A	-7.87	122.12	128.71
2	E	600	FAD	C2-N1-C10	6.30	121.33	114.98
2	A	600	FAD	C2-N1-C10	6.28	121.31	114.98
2	D	600	FAD	C2-N1-C10	6.00	121.03	114.98
2	C	600	FAD	C2-N1-C10	5.92	120.94	114.98
2	L	600	FAD	P-O3P-PA	-5.78	114.74	131.68
2	F	600	FAD	C2-N1-C10	5.72	120.75	114.98
2	L	600	FAD	C2-N1-C10	5.71	120.73	114.98
2	H	600	FAD	C2-N1-C10	5.16	120.18	114.98
2	G	600	FAD	C2-N1-C10	5.09	120.11	114.98
3	L	601	LDA	C2-C1-N1	-4.99	105.19	113.80
2	F	600	FAD	P-O3P-PA	-4.88	117.37	131.68
2	A	600	FAD	O4B-C1B-N9A	4.88	112.98	108.44
2	B	600	FAD	C2-N1-C10	4.74	119.75	114.98
2	A	600	FAD	C2'-C1'-N10	-4.70	106.21	112.45
2	E	600	FAD	P-O3P-PA	-4.64	118.07	131.68
2	L	600	FAD	N3A-C4A-N9A	4.60	133.73	125.43
3	L	601	LDA	CM2-N1-CM1	-4.56	103.64	108.85
2	I	600	FAD	C2-N1-C10	4.44	119.45	114.98
2	D	600	FAD	P-O3P-PA	-4.44	118.67	131.68
2	F	600	FAD	N3A-C4A-N9A	4.42	133.42	125.43
2	B	600	FAD	P-O3P-PA	-4.42	118.73	131.68
2	C	600	FAD	N3A-C4A-N9A	4.36	133.30	125.43
3	E	601	LDA	CM2-N1-CM1	-4.35	103.88	108.85
2	A	600	FAD	N3A-C4A-N9A	4.32	133.24	125.43
2	E	600	FAD	N3A-C4A-N9A	4.21	133.03	125.43
2	I	600	FAD	P-O3P-PA	-4.17	119.47	131.68
2	H	600	FAD	C5X-C9A-N10	4.16	120.90	116.80
2	D	600	FAD	C2'-C1'-N10	-4.14	106.96	112.45
2	C	600	FAD	P-O3P-PA	-4.12	119.60	131.68
2	D	600	FAD	N3A-C4A-N9A	4.11	132.86	125.43
2	A	600	FAD	P-O3P-PA	-4.09	119.69	131.68

Continued on next page...

Continued from previous page...

Mol	Chain	Res	Type	Atoms	Z	Observed(°)	Ideal(°)
3	C	601	LDA	C2-C1-N1	-4.06	106.81	113.80
2	L	600	FAD	C2'-C1'-N10	-4.06	107.07	112.45
2	D	600	FAD	C5X-C9A-N10	4.04	120.78	116.80
2	B	600	FAD	C2'-C1'-N10	-4.03	107.11	112.45
2	H	600	FAD	N3A-C4A-N9A	4.02	132.69	125.43
2	G	600	FAD	N3A-C4A-N9A	4.01	132.68	125.43
2	G	600	FAD	C5X-C9A-N10	4.01	120.75	116.80
2	H	600	FAD	C2'-C1'-N10	-4.00	107.14	112.45
3	G	601	LDA	CM2-N1-CM1	-4.00	104.28	108.85
3	B	601	LDA	C2-C1-N1	-3.97	106.95	113.80
2	G	600	FAD	P-O3P-PA	-3.91	120.20	131.68
2	B	600	FAD	N3A-C4A-N9A	3.85	132.39	125.43
3	F	601	LDA	C2-C1-N1	-3.84	107.18	113.80
2	G	600	FAD	C2'-C1'-N10	-3.77	107.44	112.45
2	H	600	FAD	P-O3P-PA	-3.77	120.62	131.68
2	I	600	FAD	N3A-C4A-N9A	3.76	132.22	125.43
2	I	600	FAD	C5X-C9A-N10	3.73	120.47	116.80
3	I	601	LDA	C2-C1-N1	-3.72	107.39	113.80
2	E	600	FAD	O4B-C1B-N9A	3.72	111.90	108.44
3	E	601	LDA	C2-C1-N1	-3.65	107.51	113.80
3	A	601	LDA	C2-C1-N1	-3.62	107.56	113.80
2	I	600	FAD	C2'-C1'-N10	-3.61	107.66	112.45
2	E	600	FAD	C5X-C9A-N10	3.55	120.30	116.80
2	L	600	FAD	C5X-C9A-N10	3.55	120.29	116.80
3	D	601	LDA	C2-C1-N1	-3.54	107.69	113.80
3	I	601	LDA	CM2-N1-CM1	-3.50	104.85	108.85
2	F	600	FAD	C1'-N10-C10	-3.49	114.21	119.17
2	C	600	FAD	C2'-C1'-N10	-3.47	107.84	112.45
2	A	600	FAD	C5X-C9A-N10	3.46	120.21	116.80
2	C	600	FAD	C5X-C9A-N10	3.42	120.17	116.80
2	D	600	FAD	O4B-C1B-N9A	3.41	111.61	108.44
3	G	601	LDA	C2-C1-N1	-3.40	107.95	113.80
2	E	600	FAD	C2'-C1'-N10	-3.32	108.04	112.45
3	H	601	LDA	C2-C1-N1	-3.29	108.12	113.80
2	B	600	FAD	C5X-C9A-N10	3.28	120.03	116.80
2	F	600	FAD	C2'-C1'-N10	-3.28	108.11	112.45
2	L	600	FAD	O4B-C1B-N9A	3.27	111.48	108.44
2	A	600	FAD	C9A-N10-C10	-3.24	118.59	121.77
2	H	600	FAD	C9A-N10-C10	-3.24	118.59	121.77
2	E	600	FAD	C9A-N10-C10	-3.24	118.59	121.77
2	G	600	FAD	C9A-N10-C10	-3.22	118.61	121.77
2	D	600	FAD	C8M-C8-C9	-3.21	112.63	120.38

Continued on next page...

Continued from previous page...

Mol	Chain	Res	Type	Atoms	Z	Observed(°)	Ideal(°)
2	L	600	FAD	C8M-C8-C9	-3.16	112.75	120.38
3	E	601	LDA	O1-N1-CM1	3.07	113.14	109.01
2	L	600	FAD	C9A-N10-C10	-3.03	118.80	121.77
2	H	600	FAD	O4B-C1B-N9A	3.03	111.25	108.44
2	A	600	FAD	C4X-N5-C5X	2.99	120.05	116.69
2	B	600	FAD	C1'-N10-C10	-2.95	114.98	119.17
2	F	600	FAD	C5X-C9A-N10	2.95	119.70	116.80
2	D	600	FAD	C4X-C10-N1	-2.94	119.80	122.73
2	G	600	FAD	O4B-C1B-N9A	2.93	111.17	108.44
2	D	600	FAD	C9A-N10-C10	-2.92	118.90	121.77
2	H	600	FAD	C4X-C10-N1	-2.89	119.84	122.73
2	F	600	FAD	C8M-C8-C9	-2.84	113.54	120.38
2	L	600	FAD	C8A-N9A-C4A	2.77	109.01	106.90
3	A	601	LDA	O1-N1-CM1	2.72	112.67	109.01
2	A	600	FAD	C4X-C10-N1	-2.70	120.03	122.73
2	I	600	FAD	C4X-N5-C5X	2.70	119.73	116.69
2	E	600	FAD	C1'-N10-C10	-2.70	115.33	119.17
2	E	600	FAD	O4B-C1B-C2B	-2.67	102.67	106.77
2	C	600	FAD	C8M-C8-C9	-2.64	114.01	120.38
2	H	600	FAD	C8M-C8-C9	-2.62	114.06	120.38
2	F	600	FAD	C4X-N5-C5X	2.61	119.63	116.69
2	L	600	FAD	C1'-N10-C10	-2.58	115.50	119.17
2	L	600	FAD	N7A-C8A-N9A	-2.58	107.07	114.36
2	E	600	FAD	C8M-C8-C9	-2.58	114.17	120.38
2	L	600	FAD	C5A-C4A-N3A	-2.57	120.10	125.70
2	L	600	FAD	C4X-N5-C5X	2.57	119.58	116.69
2	C	600	FAD	C5A-C4A-N3A	-2.55	120.15	125.70
2	B	600	FAD	C4X-C10-N1	-2.55	120.19	122.73
2	F	600	FAD	O4B-C1B-C2B	-2.54	102.88	106.77
2	B	600	FAD	C4X-N5-C5X	2.54	119.54	116.69
2	E	600	FAD	C5A-C4A-N3A	-2.53	120.19	125.70
2	I	600	FAD	C1'-N10-C10	-2.52	115.58	119.17
2	C	600	FAD	C4X-N5-C5X	2.52	119.52	116.69
2	A	600	FAD	C8M-C8-C9	-2.51	114.32	120.38
3	A	601	LDA	CM2-N1-CM1	-2.51	105.98	108.85
2	H	600	FAD	C5A-C4A-N3A	-2.50	120.26	125.70
3	G	601	LDA	O1-N1-CM1	2.49	112.37	109.01
2	C	600	FAD	C4X-C10-N1	-2.48	120.25	122.73
2	E	600	FAD	C4X-C10-N1	-2.47	120.26	122.73
2	G	600	FAD	C8M-C8-C9	-2.47	114.43	120.38
2	F	600	FAD	C5A-C4A-N3A	-2.46	120.35	125.70
3	L	601	LDA	O1-N1-CM1	2.42	112.27	109.01

Continued on next page...

Continued from previous page...

Mol	Chain	Res	Type	Atoms	Z	Observed(°)	Ideal(°)
3	B	601	LDA	O1-N1-CM1	2.41	112.26	109.01
2	A	600	FAD	C5A-C4A-N3A	-2.37	120.55	125.70
2	I	600	FAD	O4B-C1B-N9A	2.36	110.64	108.44
3	H	601	LDA	CM2-N1-CM1	-2.35	106.17	108.85
2	D	600	FAD	C5A-C4A-N3A	-2.33	120.63	125.70
2	B	600	FAD	O4B-C1B-N9A	2.28	110.56	108.44
2	C	600	FAD	C9A-N10-C10	-2.26	119.55	121.77
2	L	600	FAD	C4X-C10-N1	-2.25	120.48	122.73
2	G	600	FAD	O3B-C3B-C2B	-2.25	104.51	111.83
2	F	600	FAD	O4B-C1B-N9A	2.24	110.53	108.44
2	F	600	FAD	C9A-N10-C10	-2.24	119.57	121.77
2	I	600	FAD	C9A-N10-C10	-2.23	119.58	121.77
2	B	600	FAD	C8M-C8-C9	-2.22	115.03	120.38
2	E	600	FAD	C4X-N5-C5X	2.21	119.17	116.69
2	B	600	FAD	C4-N3-C2	-2.20	120.87	125.39
3	I	601	LDA	O1-N1-CM1	2.20	111.97	109.01
2	G	600	FAD	C4X-N5-C5X	2.19	119.15	116.69
2	L	600	FAD	C2A-N3A-C4A	2.18	120.21	114.01
2	G	600	FAD	C5A-C4A-N3A	-2.18	120.96	125.70
3	C	601	LDA	O1-N1-CM1	2.16	111.92	109.01
2	D	600	FAD	C2B-C3B-C4B	2.15	106.95	102.65
2	A	600	FAD	C1'-N10-C10	-2.15	116.12	119.17
2	D	600	FAD	N7A-C8A-N9A	-2.13	108.34	114.36
2	G	600	FAD	C4X-C10-N1	-2.12	120.61	122.73
2	B	600	FAD	C9A-N10-C10	-2.12	119.69	121.77
2	F	600	FAD	C4X-C10-N1	-2.12	120.61	122.73
2	C	600	FAD	O4B-C1B-N9A	2.12	110.41	108.44
2	I	600	FAD	C5A-C4A-N3A	-2.10	121.12	125.70
2	B	600	FAD	C5A-C4A-N3A	-2.10	121.13	125.70
2	H	600	FAD	C4X-N5-C5X	2.09	119.04	116.69
2	A	600	FAD	C4-C4X-C10	2.09	120.32	116.95
2	A	600	FAD	C2A-N3A-C4A	2.08	119.93	114.01
2	E	600	FAD	C4B-O4B-C1B	2.08	112.00	109.75
2	H	600	FAD	N7A-C8A-N9A	-2.07	108.49	114.36
2	D	600	FAD	C4X-N5-C5X	2.07	119.01	116.69
2	A	600	FAD	O2'-C2'-C1'	-2.06	104.58	109.71
2	G	600	FAD	C4-C4X-C10	2.06	120.28	116.95
2	B	600	FAD	C4-C4X-C10	2.06	120.27	116.95
2	L	600	FAD	C4-N3-C2	-2.06	121.17	125.39
2	H	600	FAD	C7M-C7-C6	-2.05	115.42	120.38
2	I	600	FAD	C4-N3-C2	-2.04	121.20	125.39
2	F	600	FAD	N7A-C8A-N9A	-2.01	108.69	114.36

Continued on next page...

Continued from previous page...

Mol	Chain	Res	Type	Atoms	Z	Observed(°)	Ideal(°)
2	L	600	FAD	C8A-N7A-C5A	2.00	109.80	103.58
2	I	600	FAD	C4X-C10-N1	-2.00	120.73	122.73

There are no chirality outliers.

There are no torsion outliers.

There are no ring outliers.

5.7 Other polymers ⓘ

There are no such residues in this entry.

5.8 Polymer linkage issues

There are no chain breaks in this entry.

6 Fit of model and data ⓘ

6.1 Protein, DNA and RNA chains ⓘ

In the following table, the column labelled ‘#RSRZ> 2’ contains the number (and percentage) of RSRZ outliers, followed by percent RSRZ outliers for the chain as percentile scores relative to all X-ray entries and entries of similar resolution. The OWAB column contains the minimum, median, 95th percentile and maximum values of the occupancy-weighted average B-factor per residue. The column labelled ‘Q< 0.9’ lists the number of (and percentage) of residues with an average occupancy less than 0.9.

Mol	Chain	Analysed	<RSRZ>	#RSRZ>2	OWAB(Å ²)	Q<0.9
1	A	497/520 (95%)	-0.05	0 100 100	26, 37, 56, 96	0
1	B	494/520 (95%)	-0.04	0 100 100	26, 37, 54, 78	0
1	C	498/520 (95%)	-0.09	0 100 100	26, 37, 56, 99	0
1	D	494/520 (95%)	-0.08	0 100 100	26, 37, 55, 80	0
1	E	498/520 (95%)	-0.06	0 100 100	26, 37, 56, 100	0
1	F	497/520 (95%)	-0.05	0 100 100	26, 37, 56, 98	0
1	G	494/520 (95%)	-0.09	0 100 100	26, 37, 55, 83	0
1	H	498/520 (95%)	-0.07	0 100 100	26, 37, 57, 100	0
1	I	497/520 (95%)	-0.05	0 100 100	26, 37, 56, 100	0
1	L	497/520 (95%)	0.04	0 100 100	27, 37, 56, 100	0
All	All	4964/5200 (95%)	-0.05	0 100 100	26, 37, 56, 100	0

There are no RSRZ outliers to report.

6.2 Non-standard residues in protein, DNA, RNA chains ⓘ

There are no non-standard protein/DNA/RNA residues in this entry.

6.3 Carbohydrates ⓘ

There are no carbohydrates in this entry.

6.4 Ligands ⓘ

In the following table, the Atoms column lists the number of modelled atoms in the group and the number defined in the chemical component dictionary. LLDF column lists the quality of electron

density of the group with respect to its neighbouring residues in protein, DNA or RNA chains. The B-factors column lists the minimum, median, 95th percentile and maximum values of B factors of atoms in the group. The column labelled 'Q< 0.9' lists the number of atoms with occupancy less than 0.9.

Mol	Type	Chain	Res	Atoms	RSR	LLDF	B-factors(Å ²)	Q<0.9
3	LDA	C	601	16/16	0.56	7.61	31,33,38,39	0
3	LDA	G	601	16/16	0.60	5.99	31,34,38,39	0
3	LDA	E	601	16/16	0.43	5.73	31,33,38,39	0
3	LDA	I	601	16/16	0.64	5.64	31,34,38,39	0
3	LDA	F	601	16/16	0.53	4.25	31,34,38,40	0
3	LDA	D	601	16/16	0.42	3.87	31,33,38,39	0
3	LDA	H	601	16/16	0.50	3.50	31,34,39,39	0
3	LDA	L	601	16/16	0.59	3.19	31,34,39,39	0
3	LDA	A	601	16/16	0.47	3.18	31,33,38,39	0
3	LDA	B	601	16/16	0.39	2.31	31,33,38,39	0
2	FAD	B	600	53/53	0.25	-0.06	26,37,46,49	0
2	FAD	G	600	53/53	0.24	-0.06	26,37,47,49	0
2	FAD	H	600	53/53	0.25	-0.07	25,36,47,49	0
2	FAD	E	600	53/53	0.23	-0.36	26,37,47,49	0
2	FAD	C	600	53/53	0.22	-0.38	26,37,47,49	0
2	FAD	I	600	53/53	0.21	-0.38	26,36,46,49	0
2	FAD	L	600	53/53	0.21	-0.59	26,37,47,49	0
2	FAD	D	600	53/53	0.21	-0.61	26,37,46,49	0
2	FAD	A	600	53/53	0.20	-0.67	26,36,46,49	0
2	FAD	F	600	53/53	0.23	-0.71	26,37,47,49	0

6.5 Other polymers ⓘ

There are no such residues in this entry.