



wwPDB X-ray Structure Validation Summary Report

Feb 28, 2014 – 12:18 AM GMT

PDB ID : 1ONX
Title : Crystal structure of isoaspartyl dipeptidase from escherichia coli complexed with aspartate
Authors : Thoden, J.B.; Marti-Arbona, R.; Raushel, F.M.; Holden, H.M.
Deposited on : 2003-03-02
Resolution : 2.10 Å(reported)

This is a wwPDB validation summary report for a publicly released PDB entry.

We welcome your comments at validation@mail.wwpdb.org

A user guide is available at <http://wwpdb.org/ValidationPDFNotes.html>

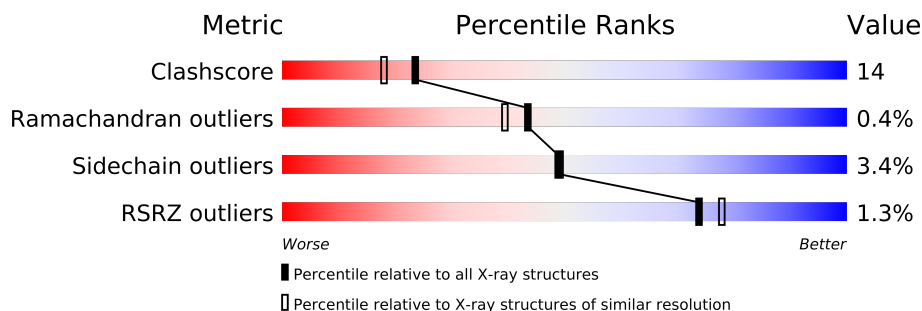
The following versions of software and data (see [references](#)) were used in the production of this report:

MolProbity	:	4.02b-467
Mogul	:	1.15 2013
Xtriage (Phenix)	:	dev-1323
EDS	:	stable22639
Percentile statistics	:	21963
Refmac	:	5.8.0049
CCP4	:	6.3.0 (Settle)
Ideal geometry (proteins)	:	Engh & Huber (2001)
Ideal geometry (DNA, RNA)	:	Parkinson et. al. (1996)
Validation Pipeline (wwPDB-VP)	:	stable22683

1 Overall quality at a glance

The reported resolution of this entry is 2.10 Å.

Percentile scores (ranging between 0-100) for global validation metrics of the entry are shown in the following graphic. The table shows the number of entries on which the scores are based.



Metric	Whole archive (#Entries)	Similar resolution (#Entries, resolution range(Å))
Clashscore	79885	3649 (2.10-2.10)
Ramachandran outliers	78287	3610 (2.10-2.10)
Sidechain outliers	78261	3611 (2.10-2.10)
RSRZ outliers	66119	3013 (2.10-2.10)

The table below summarises the geometric issues observed across the polymeric chains and their fit to the electron density. The red, orange, yellow and green segments on the lower bar indicate the fraction of residues that contain outliers for ≥ 3 , 2, 1 and 0 types of geometric quality criteria. The upper red bar (where present) indicates the fraction of residues that have poor fit to the electron density.

Mol	Chain	Length	Quality of chain
1	A	390	
1	B	390	

The following table lists non-polymeric compounds that are outliers for geometric or electron-density-fit criteria:

Mol	Type	Chain	Res	Geometry	Electron density
3	ASP	A	450	-	X

2 Entry composition i

There are 4 unique types of molecules in this entry. The entry contains 6053 atoms, of which 0 are hydrogen and 0 are deuterium.

In the tables below, the ZeroOcc column contains the number of atoms modelled with zero occupancy, the AltConf column contains the number of residues with at least one atom in alternate conformation and the Trace column contains the number of residues modelled with at most 2 atoms.

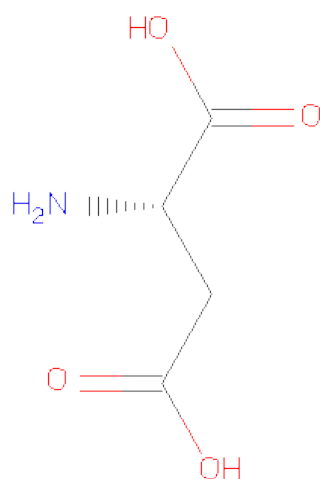
- Molecule 1 is a protein called Isoaspartyl dipeptidase.

Mol	Chain	Residues	Atoms					ZeroOcc	AltConf	Trace
1	A	389	Total	C	N	O	S	0	1	0
			2887	1817	495	563	12			
1	B	389	Total	C	N	O	S	0	1	0
			2887	1817	495	563	12			

- Molecule 2 is ZINC ION (three-letter code: ZN) (formula: Zn).

Mol	Chain	Residues	Atoms		ZeroOcc	AltConf
2	B	2	Total	Zn	0	0
			2	2		
2	A	2	Total	Zn	0	0
			2	2		

- Molecule 3 is ASPARTIC ACID (three-letter code: ASP) (formula: C₄H₇NO₄).



Mol	Chain	Residues	Atoms				ZeroOcc	AltConf
3	A	1	Total	C	N	O	0	0
			9	4	1	4		
3	B	1	Total	C	N	O	0	0
			9	4	1	4		

- Molecule 4 is water.

Mol	Chain	Residues	Atoms		ZeroOcc	AltConf
4	A	129	Total	O	0	0
			129	129		
4	B	128	Total	O	0	0
			128	128		

4 Data and refinement statistics

Property	Value	Source
Space group	P 4 21 2	Depositor
Cell constants a, b, c, α , β , γ	119.10Å 119.10Å 138.10Å 90.00° 90.00° 90.00°	Depositor
Resolution (Å)	30.00 – 2.10 40.39 – 2.04	Depositor EDS
% Data completeness (in resolution range)	94.5 (30.00-2.10) 90.3 (40.39-2.04)	Depositor EDS
R_{merge}	(Not available)	Depositor
R_{sym}	0.08	Depositor
$\langle I/\sigma(I) \rangle$ ¹	1.45 (at 2.05Å)	Xtriage
Refinement program	TNT V. 5-E	Depositor
R, R_{free}	0.177 , 0.246 0.183 , (Not available)	Depositor DCC
R_{free} test set	No test flags present.	DCC
Wilson B-factor (Å ²)	22.3	Xtriage
Anisotropy	0.157	Xtriage
Bulk solvent k_{sol} (e/Å ³), B_{sol} (Å ²)	0.35 , 85.7	EDS
Estimated twinning fraction	No twinning to report.	Xtriage
L-test for twinning	$\langle L \rangle = 0.43$, $\langle L^2 \rangle = 0.26$	Xtriage
Outliers	0 of 57610 reflections	Xtriage
F_o, F_c correlation	0.95	EDS
Total number of atoms	6053	wwPDB-VP
Average B, all atoms (Å ²)	34.0	wwPDB-VP

Xtriage's analysis on translational NCS is as follows: *The largest off-origin peak in the Patterson function is 4.00% of the height of the origin peak. No significant pseudotranslation is detected.*

¹Intensities estimated from amplitudes.

5 Model quality

5.1 Standard geometry

Bond lengths and bond angles in the following residue types are not validated in this section: ZN, KCX

The Z score for a bond length (or angle) is the number of standard deviations the observed value is removed from the expected value. A bond length (or angle) with $|Z| > 5$ is considered an outlier worth inspection. RMSZ is the root-mean-square of all Z scores of the bond lengths (or angles).

Mol	Chain	Bond lengths		Bond angles	
		RMSZ	$\# Z > 5$	RMSZ	$\# Z > 5$
1	A	0.97	12/2928 (0.4%)	1.44	43/3984 (1.1%)
1	B	0.99	15/2928 (0.5%)	1.44	44/3984 (1.1%)
All	All	0.98	27/5856 (0.5%)	1.44	87/7968 (1.1%)

The worst 5 of 27 bond length outliers are listed below:

Mol	Chain	Res	Type	Atoms	Z	Observed(Å)	Ideal(Å)
1	A	362	GLU	CD-OE2	8.29	1.34	1.25
1	A	312	GLU	CD-OE2	7.76	1.34	1.25
1	B	259	GLU	CD-OE2	7.53	1.33	1.25
1	B	296	GLU	CD-OE2	7.22	1.33	1.25
1	A	296	GLU	CD-OE2	7.12	1.33	1.25

The worst 5 of 87 bond angle outliers are listed below:

Mol	Chain	Res	Type	Atoms	Z	Observed(°)	Ideal(°)
1	B	364	ARG	NE-CZ-NH1	10.80	125.70	120.30
1	A	151	ASP	CB-CG-OD2	-10.62	108.74	118.30
1	A	151	ASP	CB-CG-OD1	10.13	127.41	118.30
1	A	233	ARG	NE-CZ-NH2	-10.03	115.29	120.30
1	A	353	ASP	CB-CG-OD2	-9.44	109.80	118.30

There are no chirality outliers.

There are no planarity outliers.

5.2 Close contacts

In the following table, the Non-H and H(model) columns list the number of non-hydrogen atoms and hydrogen atoms in the chain respectively. The H(added) column lists the number of hydrogens

added by MolProbity. The Clashes column lists the number of clashes within the asymmetric unit, and the number in parentheses is this value normalized per 1000 atoms of the molecule in the chain. The Symm-Clashes column gives symmetry related clashes, in the same way as for the Clashes column.

Mol	Chain	Non-H	H(model)	H(added)	Clashes	Symm-Clashes
1	A	2887	0	2906	103	0
1	B	2887	0	2906	69	0
2	A	2	0	0	0	0
2	B	2	0	0	0	0
3	A	9	0	3	1	0
3	B	9	0	3	0	0
4	A	129	0	0	2	0
4	B	128	0	0	0	1
All	All	6053	0	5818	167	1

Clashscore is defined as the number of clashes calculated for the entry per 1000 atoms (including hydrogens) of the entry. The overall clashscore for this entry is 14.

The worst 5 of 167 close contacts within the same asymmetric unit are listed below.

Atom-1	Atom-2	Distance(Å)	Clash(Å)
1:B:78:ALA:HB3	1:B:82:THR:HG21	1.58	0.85
1:A:43:PRO:HG2	1:A:46:ILE:HD13	1.66	0.77
1:A:289:SER:C	1:A:291:PRO:HD3	2.06	0.76
1:A:235:VAL:HB	1:A:236:PRO:HD3	1.71	0.72
1:A:289:SER:O	1:A:291:PRO:HD3	1.90	0.72

All (1) symmetry-related close contacts are listed below. The label for Atom-2 includes the symmetry operator and encoded unit-cell translations to be applied.

Atom-1	Atom-2	Distance(Å)	Clash(Å)
4:B:493:HOH:O	4:B:493:HOH:O[7_556]	2.13	0.07

5.3 Torsion angles

5.3.1 Protein backbone ⓘ

In the following table, the Percentiles column shows the percent Ramachandran outliers of the chain as a percentile score with respect to all X-ray entries followed by that with respect to entries of similar resolution. The Analysed column shows the number of residues for which the backbone conformation was analysed, and the total number of residues.

Mol	Chain	Analysed	Favoured	Allowed	Outliers	Percentiles	
1	A	387/390 (99%)	356 (92%)	29 (8%)	2 (0%)	38	33
1	B	387/390 (99%)	363 (94%)	23 (6%)	1 (0%)	50	49
All	All	774/780 (99%)	719 (93%)	52 (7%)	3 (0%)	43	39

All (3) Ramachandran outliers are listed below:

Mol	Chain	Res	Type
1	A	294	ASP
1	A	19	ALA
1	B	44	SER

5.3.2 Protein sidechains ⓘ

In the following table, the Percentiles column shows the percent sidechain outliers of the chain as a percentile score with respect to all X-ray entries followed by that with respect to entries of similar resolution. The Analysed column shows the number of residues for which the sidechain conformation was analysed, and the total number of residues.

Mol	Chain	Analysed	Rotameric	Outliers	Percentiles	
1	A	313/312 (100%)	301 (96%)	12 (4%)	44	44
1	B	313/312 (100%)	304 (97%)	9 (3%)	55	57
All	All	626/624 (100%)	605 (97%)	21 (3%)	49	49

5 of 21 residues with a non-rotameric sidechain are listed below:

Mol	Chain	Res	Type
1	A	324	SER
1	A	362	GLU
1	B	207	LYS
1	A	300	THR
1	B	299	LEU

Some sidechains can be flipped to improve hydrogen bonding and reduce clashes. 5 of 12 such sidechains are listed below:

Mol	Chain	Res	Type
1	A	290	GLN
1	A	315	GLN
1	B	32	ASN
1	A	230	HIS
1	B	13	GLN

5.3.3 RNA ⓘ

There are no RNA chains in this entry.

5.4 Non-standard residues in protein, DNA, RNA chains ⓘ

2 non-standard protein/DNA/RNA residues are modelled in this entry.

In the following table, the Counts columns list the number of bonds (or angles) for which Mogul statistics could be retrieved, the number of bonds (or angles) that are observed in the model and the number of bonds (or angles) that are defined in the chemical component dictionary. The Link column lists molecule types, if any, to which the group is linked. The Z score for a bond length (or angle) is the number of standard deviations the observed value is removed from the expected value. A bond length (or angle) with $|Z| > 2$ is considered an outlier worth inspection. RMSZ is the root-mean-square of all Z scores of the bond lengths (or angles).

Mol	Type	Chain	Res	Link	Bond lengths			Bond angles		
					Counts	RMSZ	# $ Z > 2$	Counts	RMSZ	# $ Z > 2$
1	KCX	A	162	1,2	11,11,12	6.94	4 (36%)	10,12,14	3.17	4 (40%)
1	KCX	B	162	1,2	11,11,12	7.09	3 (27%)	10,12,14	4.11	5 (50%)

In the following table, the Chirals column lists the number of chiral outliers, the number of chiral centers analysed, the number of these observed in the model and the number defined in the chemical component dictionary. Similar counts are reported in the Torsion and Rings columns. '-' means no outliers of that kind were identified.

Mol	Type	Chain	Res	Link	Chirals	Torsions	Rings
1	KCX	A	162	1,2	-	0/8/10/12	0/0/0/0
1	KCX	B	162	1,2	-	0/8/10/12	0/0/0/0

The worst 5 of 7 bond length outliers are listed below:

Mol	Chain	Res	Type	Atoms	Z	Observed(Å)	Ideal(Å)
1	B	162	KCX	O-C	17.23	1.23	1.11
1	A	162	KCX	O-C	16.75	1.22	1.11
1	B	162	KCX	CX-NZ	14.92	1.47	1.32
1	A	162	KCX	CX-NZ	14.75	1.46	1.32
1	B	162	KCX	OQ1-CX	5.22	1.31	1.21

The worst 5 of 9 bond angle outliers are listed below:

Mol	Chain	Res	Type	Atoms	Z	Observed(°)	Ideal(°)
1	B	162	KCX	OQ1-CX-NZ	-8.16	111.37	124.94
1	A	162	KCX	OQ1-CX-NZ	-6.53	114.08	124.94

Continued on next page...

Continued from previous page...

Mol	Chain	Res	Type	Atoms	Z	Observed(°)	Ideal(°)
1	B	162	KCX	CE-NZ-CX	-6.35	110.43	121.99
1	B	162	KCX	OQ2-CX-NZ	6.06	123.88	116.33
1	A	162	KCX	CE-NZ-CX	-5.31	112.31	121.99

There are no chirality outliers.

There are no torsion outliers.

There are no ring outliers.

5.5 Carbohydrates i

There are no carbohydrates in this entry.

5.6 Ligand geometry i

Of 6 ligands modelled in this entry, 4 are monoatomic - leaving 2 for Mogul analysis.

In the following table, the Counts columns list the number of bonds (or angles) for which Mogul statistics could be retrieved, the number of bonds (or angles) that are observed in the model and the number of bonds (or angles) that are defined in the chemical component dictionary. The Link column lists molecule types, if any, to which the group is linked. The Z score for a bond length (or angle) is the number of standard deviations the observed value is removed from the expected value. A bond length (or angle) with $|Z| > 2$ is considered an outlier worth inspection. RMSZ is the root-mean-square of all Z scores of the bond lengths (or angles).

Mol	Type	Chain	Res	Link	Bond lengths			Bond angles		
					Counts	RMSZ	$\# Z > 2$	Counts	RMSZ	$\# Z > 2$
3	ASP	A	450	2	8,8,8	1.43	1 (12%)	10,10,10	1.82	2 (20%)
3	ASP	B	550	2	8,8,8	1.22	1 (12%)	10,10,10	1.41	2 (20%)

In the following table, the Chirals column lists the number of chiral outliers, the number of chiral centers analysed, the number of these observed in the model and the number defined in the chemical component dictionary. Similar counts are reported in the Torsion and Rings columns. '-' means no outliers of that kind were identified.

Mol	Type	Chain	Res	Link	Chirals	Torsions	Rings
3	ASP	A	450	2	-	0/8/8/8	0/0/0/0
3	ASP	B	550	2	-	0/8/8/8	0/0/0/0

All (2) bond length outliers are listed below:

Mol	Chain	Res	Type	Atoms	Z	Observed(Å)	Ideal(Å)
3	A	450	ASP	CA-N	-3.03	1.33	1.49
3	B	550	ASP	CA-N	-2.69	1.35	1.49

All (4) bond angle outliers are listed below:

Mol	Chain	Res	Type	Atoms	Z	Observed(°)	Ideal(°)
3	A	450	ASP	CB-CA-C	-4.08	98.77	111.20
3	B	550	ASP	C-CA-N	2.96	114.27	109.36
3	A	450	ASP	OD2-CG-OD1	2.89	130.66	123.30
3	B	550	ASP	CB-CA-C	-2.87	102.45	111.20

There are no chirality outliers.

There are no torsion outliers.

There are no ring outliers.

5.7 Other polymers ⓘ

There are no such residues in this entry.

5.8 Polymer linkage issues

There are no chain breaks in this entry.

6 Fit of model and data ⓘ

6.1 Protein, DNA and RNA chains ⓘ

In the following table, the column labelled ‘#RSRZ> 2’ contains the number (and percentage) of RSRZ outliers, followed by percent RSRZ outliers for the chain as percentile scores relative to all X-ray entries and entries of similar resolution. The OWAB column contains the minimum, median, 95th percentile and maximum values of the occupancy-weighted average B-factor per residue. The column labelled ‘Q< 0.9’ lists the number of (and percentage) of residues with an average occupancy less than 0.9.

Mol	Chain	Analysed	<RSRZ>	#RSRZ>2	OWAB(Å ²)	Q<0.9
1	A	389/390 (99%)	-0.49	3 (0%) 83 87	14, 29, 66, 97	0
1	B	389/390 (99%)	-0.38	7 (1%) 65 69	12, 28, 64, 100	0
All	All	778/780 (99%)	-0.44	10 (1%) 74 78	12, 28, 65, 100	0

The worst 5 of 10 RSRZ outliers are listed below:

Mol	Chain	Res	Type	RSRZ
1	B	292	PHE	5.7
1	B	295	ASP	4.5
1	B	301	HIS	3.6
1	B	299	LEU	3.3
1	B	389	THR	3.1

6.2 Non-standard residues in protein, DNA, RNA chains ⓘ

In the following table, the Atoms column lists the number of modelled atoms in the group and the number defined in the chemical component dictionary. LLDF column lists the quality of electron density of the group with respect to its neighbouring residues in protein, DNA or RNA chains. The B-factors column lists the minimum, median, 95th percentile and maximum values of B factors of atoms in the group. The column labelled ‘Q< 0.9’ lists the number of atoms with occupancy less than 0.9.

Mol	Type	Chain	Res	Atoms	RSR	LLDF	B-factors(Å ²)	Q<0.9
1	KCX	B	162	12/13	0.14	3.26	8,30,45,52	0
1	KCX	A	162	12/13	0.10	1.60	17,32,53,71	0

6.3 Carbohydrates ⓘ

There are no carbohydrates in this entry.

6.4 Ligands ⓘ

In the following table, the Atoms column lists the number of modelled atoms in the group and the number defined in the chemical component dictionary. LLDF column lists the quality of electron density of the group with respect to its neighbouring residues in protein, DNA or RNA chains. The B-factors column lists the minimum, median, 95th percentile and maximum values of B factors of atoms in the group. The column labelled 'Q< 0.9' lists the number of atoms with occupancy less than 0.9.

Mol	Type	Chain	Res	Atoms	RSR	LLDF	B-factors(Å ²)	Q<0.9
3	ASP	A	450	9/9	0.14	2.39	27,36,70,87	0
3	ASP	B	550	9/9	0.13	0.92	30,43,54,100	0
2	ZN	B	501	1/1	0.04	-3.29	46,46,46,46	0
2	ZN	B	502	1/1	0.04	-3.88	45,45,45,45	0
2	ZN	A	402	1/1	0.04	-4.51	52,52,52,52	0
2	ZN	A	401	1/1	0.04	-4.97	51,51,51,51	0

6.5 Other polymers ⓘ

There are no such residues in this entry.