



# Full wwPDB X-ray Structure Validation Report ⓘ

Feb 28, 2014 – 04:14 AM GMT

PDB ID : 2OQ2  
Title : Crystal structure of yeast PAPS reductase with PAP, a product complex  
Authors : Yu, Z.; Fisher, A.J.  
Deposited on : 2007-01-31  
Resolution : 2.10 Å(reported)

This is a full wwPDB validation report for a publicly released PDB entry.  
We welcome your comments at [validation@mail.wwpdb.org](mailto:validation@mail.wwpdb.org)  
A user guide is available at <http://wwpdb.org/ValidationPDFNotes.html>

---

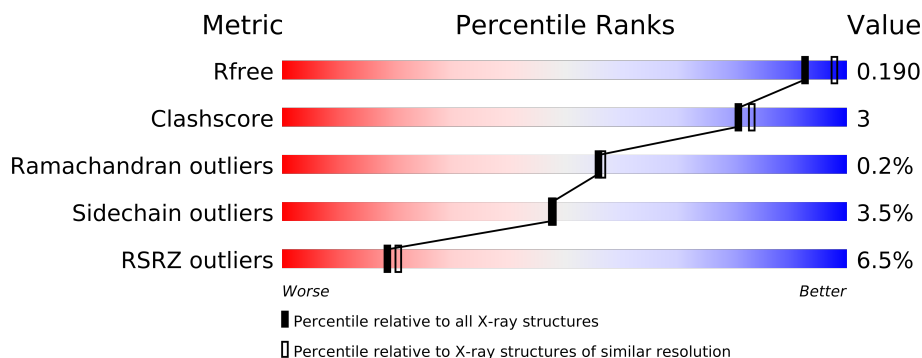
The following versions of software and data (see [references](#)) were used in the production of this report:

MolProbity : 4.02b-467  
Mogul : 1.15 2013  
Xtriage (Phenix) : dev-1323  
EDS : stable22639  
Percentile statistics : 21963  
Refmac : 5.8.0049  
CCP4 : 6.3.0 (Settle)  
Ideal geometry (proteins) : Engh & Huber (2001)  
Ideal geometry (DNA, RNA) : Parkinson et. al. (1996)  
Validation Pipeline (wwPDB-VP) : stable22683

# 1 Overall quality at a glance

The reported resolution of this entry is 2.10 Å.

Percentile scores (ranging between 0-100) for global validation metrics of the entry are shown in the following graphic. The table shows the number of entries on which the scores are based.



Metric	Whole archive (#Entries)	Similar resolution (#Entries, resolution range(Å))
$R_{free}$	66092	3012 (2.10-2.10)
Clashscore	79885	3649 (2.10-2.10)
Ramachandran outliers	78287	3610 (2.10-2.10)
Sidechain outliers	78261	3611 (2.10-2.10)
RSRZ outliers	66119	3013 (2.10-2.10)

The table below summarises the geometric issues observed across the polymeric chains and their fit to the electron density. The red, orange, yellow and green segments on the lower bar indicate the fraction of residues that contain outliers for  $\geq 3$ , 2, 1 and 0 types of geometric quality criteria. The upper red bar (where present) indicates the fraction of residues that have poor fit to the electron density.

Mol	Chain	Length	Quality of chain
1	A	261	
1	B	261	
1	C	261	
1	D	261	

## 2 Entry composition i

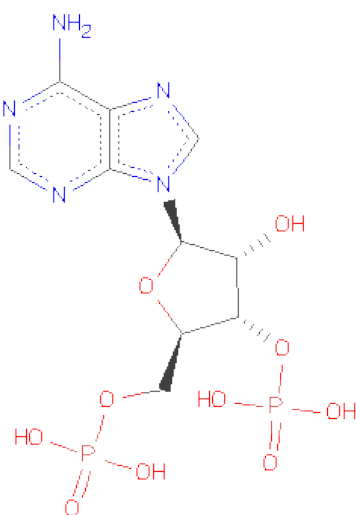
There are 3 unique types of molecules in this entry. The entry contains 8616 atoms, of which 0 are hydrogen and 0 are deuterium.

In the tables below, the ZeroOcc column contains the number of atoms modelled with zero occupancy, the AltConf column contains the number of residues with at least one atom in alternate conformation and the Trace column contains the number of residues modelled with at most 2 atoms.

- Molecule 1 is a protein called Phosphoadenosine phosphosulfate reductase.

Mol	Chain	Residues	Atoms					ZeroOcc	AltConf	Trace
1	A	251	Total	C	N	O	S	0	0	0
			2053	1321	341	386	5			
1	B	252	Total	C	N	O	S	0	0	0
			2036	1313	339	379	5			
1	C	257	Total	C	N	O	S	0	0	0
			2108	1354	351	398	5			
1	D	246	Total	C	N	O	S	0	0	0
			1978	1270	329	374	5			

- Molecule 2 is ADENOSINE-3'-5'-DIPHOSPHATE (three-letter code: A3P) (formula:  $C_{10}H_{15}N_5O_{10}P_2$ ).



Mol	Chain	Residues	Atoms					ZeroOcc	AltConf
2	A	1	Total	C	N	O	P	0	0
			27	10	5	10	2		
2	B	1	Total	C	N	O	P	0	0
			27	10	5	10	2		

*Continued on next page...*

*Continued from previous page...*

Mol	Chain	Residues	Atoms					ZeroOcc	AltConf
2	C	1	Total	C	N	O	P	0	0
			27	10	5	10	2		
2	D	1	Total	C	N	O	P	0	0
			27	10	5	10	2		

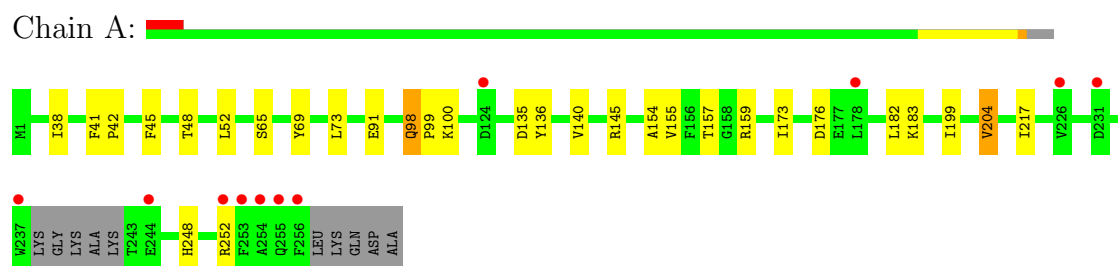
- Molecule 3 is water.

Mol	Chain	Residues	Atoms		ZeroOcc	AltConf
3	A	95	Total	O	0	0
			95	95		
3	B	41	Total	O	0	0
			41	41		
3	C	145	Total	O	0	0
			145	145		
3	D	52	Total	O	0	0
			52	52		

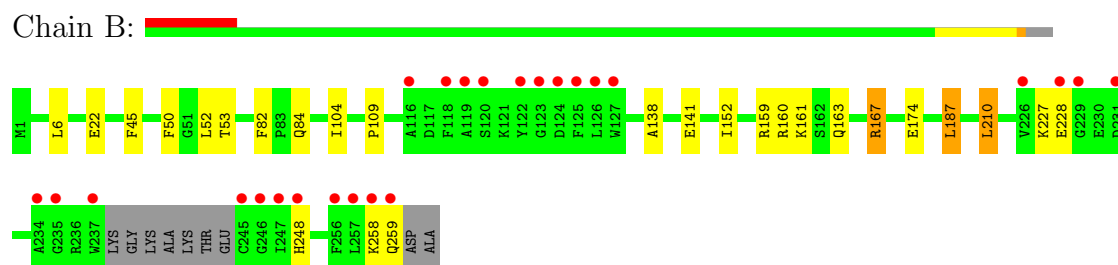
### 3 Residue-property plots

These plots are drawn for all protein, RNA and DNA chains in the entry. The first graphic for a chain summarises the proportions of errors displayed in the second graphic. The second graphic shows the sequence view annotated by issues in geometry and electron density. Residues are color-coded according to the number of geometric quality criteria for which they contain at least one outlier: green = 0, yellow = 1, orange = 2 and red = 3 or more. A red dot above a residue indicates a poor fit to the electron density ( $RSRZ > 2$ ). Stretches of 2 or more consecutive residues without any outlier are shown as a green connector. Residues present in the sample, but not in the model, are shown in grey.

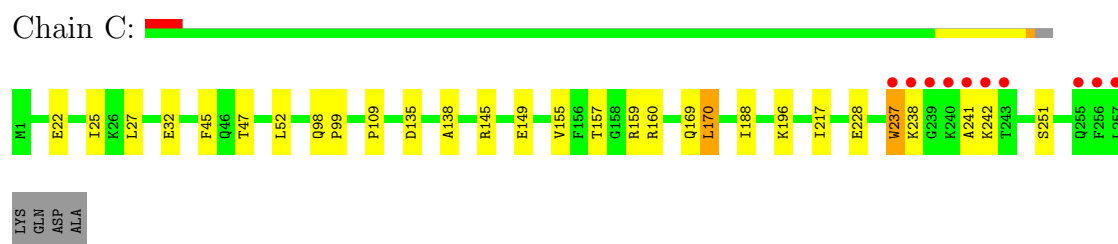
- Molecule 1: Phosphoadenosine phosphosulfate reductase



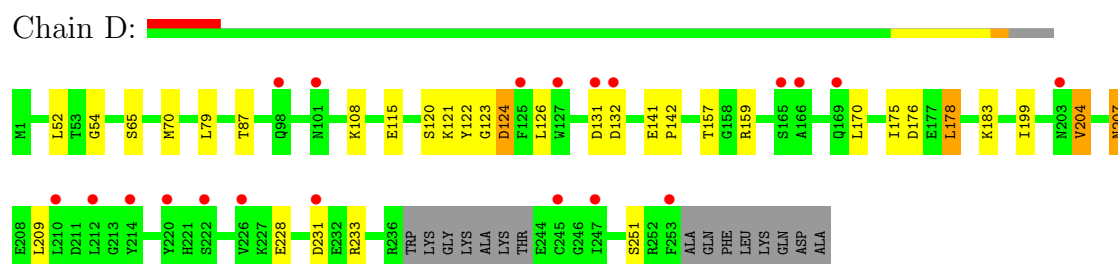
- Molecule 1: Phosphoadenosine phosphosulfate reductase



- Molecule 1: Phosphoadenosine phosphosulfate reductase



- Molecule 1: Phosphoadenosine phosphosulfate reductase



## 4 Data and refinement statistics

Property	Value	Source
Space group	P 21 21 21	Depositor
Cell constants a, b, c, $\alpha$ , $\beta$ , $\gamma$	49.42Å 63.08Å 323.96Å 90.00° 90.00° 90.00°	Depositor
Resolution (Å)	40.00 – 2.10 37.31 – 2.10	Depositor EDS
% Data completeness (in resolution range)	98.2 (40.00-2.10) 91.4 (37.31-2.10)	Depositor EDS
$R_{merge}$	0.07	Depositor
$R_{sym}$	0.07	Depositor
$\langle I/\sigma(I) \rangle$ <sup>1</sup>	3.32 (at 2.10Å)	Xtriage
Refinement program	REFMAC 5.2.0019	Depositor
R, $R_{free}$	0.193 , 0.246 0.195 , 0.190	Depositor DCC
$R_{free}$ test set	2762 reflections (5.25%)	DCC
Wilson B-factor (Å <sup>2</sup> )	34.1	Xtriage
Anisotropy	0.084	Xtriage
Bulk solvent $k_{sol}$ (e/Å <sup>3</sup> ), $B_{sol}$ (Å <sup>2</sup> )	0.35 , 60.0	EDS
Estimated twinning fraction	No twinning to report.	Xtriage
L-test for twinning	$\langle  L  \rangle = 0.48$ , $\langle L^2 \rangle = 0.31$	Xtriage
Outliers	0 of 55322 reflections	Xtriage
$F_o, F_c$ correlation	0.95	EDS
Total number of atoms	8616	wwPDB-VP
Average B, all atoms (Å <sup>2</sup> )	36.0	wwPDB-VP

Xtriage's analysis on translational NCS is as follows: *The largest off-origin peak in the Patterson function is 3.82% of the height of the origin peak. No significant pseudotranslation is detected.*

<sup>1</sup>Intensities estimated from amplitudes.

## 5 Model quality ⓘ

### 5.1 Standard geometry ⓘ

Bond lengths and bond angles in the following residue types are not validated in this section: A3P

The Z score for a bond length (or angle) is the number of standard deviations the observed value is removed from the expected value. A bond length (or angle) with  $|Z| > 5$  is considered an outlier worth inspection. RMSZ is the root-mean-square of all Z scores of the bond lengths (or angles).

Mol	Chain	Bond lengths		Bond angles	
		RMSZ	$\# Z  > 5$	RMSZ	$\# Z  > 5$
1	A	0.42	0/2106	0.53	0/2856
1	B	0.38	0/2089	0.51	1/2838 (0.0%)
1	C	0.48	0/2162	0.58	1/2930 (0.0%)
1	D	0.61	4/2028 (0.2%)	0.56	0/2756
All	All	0.48	4/8385 (0.0%)	0.55	2/11380 (0.0%)

All (4) bond length outliers are listed below:

Mol	Chain	Res	Type	Atoms	Z	Observed(Å)	Ideal(Å)
1	D	228	GLU	CD-OE2	13.42	1.40	1.25
1	D	120	SER	CB-OG	9.11	1.54	1.42
1	D	228	GLU	CD-OE1	7.11	1.33	1.25
1	D	87	THR	C-O	5.04	1.32	1.23

All (2) bond angle outliers are listed below:

Mol	Chain	Res	Type	Atoms	Z	Observed(°)	Ideal(°)
1	C	170	LEU	CA-CB-CG	5.31	127.51	115.30
1	B	187	LEU	CA-CB-CG	5.04	126.89	115.30

There are no chirality outliers.

There are no planarity outliers.

### 5.2 Close contacts ⓘ

In the following table, the Non-H and H(model) columns list the number of non-hydrogen atoms and hydrogen atoms in the chain respectively. The H(added) column lists the number of hydrogens added by MolProbity. The Clashes column lists the number of clashes within the asymmetric unit, and the number in parentheses is this value normalized per 1000 atoms of the molecule in the

chain. The Symm-Clashes column gives symmetry related clashes, in the same way as for the Clashes column.

Mol	Chain	Non-H	H(model)	H(added)	Clashes	Symm-Clashes
1	A	2053	0	1977	16	0
1	B	2036	0	1949	12	0
1	C	2108	0	2049	14	0
1	D	1978	0	1879	12	0
2	A	27	0	11	0	0
2	B	27	0	11	0	0
2	C	27	0	11	0	0
2	D	27	0	11	1	0
3	A	95	0	0	2	0
3	B	41	0	0	2	0
3	C	145	0	0	3	0
3	D	52	0	0	0	0
All	All	8616	0	7898	54	0

Clashscore is defined as the number of clashes calculated for the entry per 1000 atoms (including hydrogens) of the entry. The overall clashscore for this entry is 3.

All (54) close contacts within the same asymmetric unit are listed below.

Atom-1	Atom-2	Distance(Å)	Clash(Å)
1:A:176:ASP:HB2	1:A:183:LYS:HE3	1.70	0.74
1:B:82:PHE:HB3	1:B:84:GLN:HE21	1.58	0.68
1:D:176:ASP:HB2	1:D:183:LYS:HE2	1.76	0.66
1:D:207:ASN:HD22	1:D:209:LEU:H	1.49	0.61
1:D:141:GLU:HB3	1:D:142:PRO:HD3	1.82	0.60
1:C:238:LYS:HB2	3:C:1064:HOH:O	2.02	0.59
1:D:123:GLY:HA3	1:D:124:ASP:CB	2.33	0.59
1:D:159:ARG:HB3	1:D:170:LEU:HD11	1.83	0.58
1:C:159:ARG:HB3	1:C:170:LEU:HD11	1.87	0.57
1:A:157:THR:OG1	1:A:159:ARG:HD3	2.09	0.53
1:B:22:GLU:HG3	3:B:1021:HOH:O	2.08	0.53
1:B:141:GLU:HG2	3:B:1023:HOH:O	2.10	0.52
1:D:65:SER:HB3	1:D:70:MET:HG2	1.90	0.52
1:A:38:ILE:HG23	1:A:69:TYR:CE1	2.45	0.51
1:A:48:THR:HG22	1:A:73:LEU:HD11	1.91	0.51
1:A:159:ARG:HD2	1:A:248:HIS:CE1	2.46	0.50
1:D:178:LEU:HD12	1:D:251:SER:HA	1.93	0.50
1:C:237:TRP:CE2	1:C:242:LYS:HA	2.49	0.48
1:D:121:LYS:HD3	1:D:122:TYR:CZ	2.49	0.48
1:C:45:PHE:O	1:C:155:VAL:HA	2.13	0.48
1:B:109:PRO:HG3	1:B:138:ALA:HA	1.96	0.48

*Continued on next page...*



*Continued from previous page...*

Atom-1	Atom-2	Distance(Å)	Clash(Å)
1:B:159:ARG:NH1	1:B:174:GLU:OE1	2.45	0.48
1:A:48:THR:CG2	1:A:73:LEU:HD11	2.44	0.47
1:C:27:LEU:HD13	1:C:32:GLU:HB3	1.96	0.47
1:A:217:ILE:HD12	3:A:1053:HOH:O	2.15	0.47
1:D:54:GLY:HA3	2:D:999:A3P:O3P	2.15	0.47
1:C:228:GLU:OE2	1:C:228:GLU:N	2.48	0.46
1:C:109:PRO:HG3	1:C:138:ALA:HA	1.96	0.46
1:B:53:THR:HG23	1:B:187:LEU:HD12	1.96	0.46
1:A:98:GLN:HB3	1:A:99:PRO:HD3	1.96	0.46
1:A:45:PHE:O	1:A:155:VAL:HA	2.16	0.46
1:C:22:GLU:O	1:C:25:ILE:HG22	2.17	0.45
1:A:52:LEU:HG	1:A:199:ILE:HG13	1.99	0.45
1:C:145:ARG:O	1:C:149:GLU:HG3	2.16	0.45
1:D:79:LEU:HD21	1:D:108:LYS:HD3	1.99	0.44
1:A:136:TYR:HA	1:A:140:VAL:HB	1.99	0.44
1:A:145:ARG:NH2	3:A:1087:HOH:O	2.46	0.44
1:D:199:ILE:HA	1:D:204:VAL:HG13	2.00	0.43
1:C:98:GLN:HB3	1:C:99:PRO:HD3	2.00	0.43
1:B:160:ARG:HB2	1:B:163:GLN:HG3	2.01	0.43
1:A:41:PHE:HA	1:A:42:PRO:HD2	1.95	0.43
1:A:199:ILE:HA	1:A:204:VAL:HG13	2.00	0.43
1:C:47:THR:HG21	3:C:1068:HOH:O	2.19	0.42
1:A:65:SER:OG	1:A:100:LYS:HE2	2.20	0.42
1:B:161:LYS:HA	1:B:167:ARG:O	2.20	0.42
1:B:50:PHE:HZ	1:B:104:ILE:HD13	1.84	0.41
1:C:160:ARG:HA	1:C:188:ILE:HA	2.02	0.41
1:D:65:SER:CB	1:D:70:MET:HG2	2.50	0.41
1:B:52:LEU:HD13	1:B:210:LEU:HD13	2.02	0.41
1:B:45:PHE:CD1	1:B:152:ILE:HG12	2.56	0.41
1:C:237:TRP:HB3	1:C:241:ALA:H	1.85	0.41
1:B:227:LYS:HB3	1:B:228:GLU:H	1.76	0.40
1:A:154:ALA:HA	1:A:182:LEU:O	2.21	0.40
1:C:217:ILE:HD12	3:C:1087:HOH:O	2.20	0.40

There are no symmetry-related clashes.

## 5.3 Torsion angles

### 5.3.1 Protein backbone ⓘ

In the following table, the Percentiles column shows the percent Ramachandran outliers of the chain as a percentile score with respect to all X-ray entries followed by that with respect to entries

of similar resolution. The Analysed column shows the number of residues for which the backbone conformation was analysed, and the total number of residues.

Mol	Chain	Analysed	Favoured	Allowed	Outliers	Percentiles	
1	A	247/261 (95%)	244 (99%)	3 (1%)	0	100	100
1	B	248/261 (95%)	234 (94%)	13 (5%)	1 (0%)	43	39
1	C	255/261 (98%)	248 (97%)	7 (3%)	0	100	100
1	D	242/261 (93%)	237 (98%)	4 (2%)	1 (0%)	43	39
All	All	992/1044 (95%)	963 (97%)	27 (3%)	2 (0%)	56	57

All (2) Ramachandran outliers are listed below:

Mol	Chain	Res	Type
1	D	124	ASP
1	B	258	LYS

### 5.3.2 Protein sidechains ⓘ

In the following table, the Percentiles column shows the percent sidechain outliers of the chain as a percentile score with respect to all X-ray entries followed by that with respect to entries of similar resolution. The Analysed column shows the number of residues for which the sidechain conformation was analysed, and the total number of residues.

Mol	Chain	Analysed	Rotameric	Outliers	Percentiles	
1	A	219/233 (94%)	213 (97%)	6 (3%)	57	60
1	B	214/233 (92%)	209 (98%)	5 (2%)	63	66
1	C	227/233 (97%)	220 (97%)	7 (3%)	52	54
1	D	208/233 (89%)	196 (94%)	12 (6%)	28	23
All	All	868/932 (93%)	838 (96%)	30 (4%)	48	48

All (30) residues with a non-rotameric sidechain are listed below:

Mol	Chain	Res	Type
1	A	91	GLU
1	A	98	GLN
1	A	135	ASP
1	A	173	ILE
1	A	204	VAL
1	A	252	ARG
1	B	6	LEU

*Continued on next page...*

*Continued from previous page...*

Mol	Chain	Res	Type
1	B	167	ARG
1	B	210	LEU
1	B	248	HIS
1	B	259	GLN
1	C	52	LEU
1	C	135	ASP
1	C	157	THR
1	C	169	GLN
1	C	196	LYS
1	C	237	TRP
1	C	251	SER
1	D	52	LEU
1	D	115	GLU
1	D	126	LEU
1	D	131	ASP
1	D	132	ASP
1	D	157	THR
1	D	175	ILE
1	D	178	LEU
1	D	204	VAL
1	D	207	ASN
1	D	231	ASP
1	D	233	ARG

Some sidechains can be flipped to improve hydrogen bonding and reduce clashes. All (6) such sidechains are listed below:

Mol	Chain	Res	Type
1	A	98	GLN
1	B	84	GLN
1	C	46	GLN
1	C	169	GLN
1	C	248	HIS
1	D	207	ASN

### 5.3.3 RNA ⓘ

There are no RNA chains in this entry.

## 5.4 Non-standard residues in protein, DNA, RNA chains ⓘ

There are no non-standard protein/DNA/RNA residues in this entry.

## 5.5 Carbohydrates ⓘ

There are no carbohydrates in this entry.

## 5.6 Ligand geometry ⓘ

4 ligands are modelled in this entry.

In the following table, the Counts columns list the number of bonds (or angles) for which Mogul statistics could be retrieved, the number of bonds (or angles) that are observed in the model and the number of bonds (or angles) that are defined in the chemical component dictionary. The Link column lists molecule types, if any, to which the group is linked. The Z score for a bond length (or angle) is the number of standard deviations the observed value is removed from the expected value. A bond length (or angle) with  $|Z| > 2$  is considered an outlier worth inspection. RMSZ is the root-mean-square of all Z scores of the bond lengths (or angles).

Mol	Type	Chain	Res	Link	Bond lengths			Bond angles		
					Counts	RMSZ	$\# Z  > 2$	Counts	RMSZ	$\# Z  > 2$
2	A3P	A	999	-	29,29,29	1.08	2 (6%)	45,45,45	1.82	7 (15%)
2	A3P	B	999	-	29,29,29	1.10	2 (6%)	45,45,45	1.87	9 (20%)
2	A3P	C	999	-	29,29,29	1.09	2 (6%)	45,45,45	1.80	8 (17%)
2	A3P	D	999	-	29,29,29	1.09	2 (6%)	45,45,45	1.87	9 (20%)

In the following table, the Chirals column lists the number of chiral outliers, the number of chiral centers analysed, the number of these observed in the model and the number defined in the chemical component dictionary. Similar counts are reported in the Torsion and Rings columns. '-' means no outliers of that kind were identified.

Mol	Type	Chain	Res	Link	Chirals	Torsions	Rings
2	A3P	A	999	-	-	0/15/31/31	0/1/3/3
2	A3P	B	999	-	-	0/15/31/31	0/1/3/3
2	A3P	C	999	-	-	0/15/31/31	0/1/3/3
2	A3P	D	999	-	-	0/15/31/31	0/1/3/3

All (8) bond length outliers are listed below:

Mol	Chain	Res	Type	Atoms	Z	Observed(Å)	Ideal(Å)
2	D	999	A3P	C5-C4	3.33	1.48	1.40
2	B	999	A3P	C5-C4	3.27	1.47	1.40

*Continued on next page...*

*Continued from previous page...*

Mol	Chain	Res	Type	Atoms	Z	Observed(Å)	Ideal(Å)
2	A	999	A3P	C5-C4	3.16	1.47	1.40
2	C	999	A3P	C5-C4	3.15	1.47	1.40
2	C	999	A3P	C4-N9	-2.92	1.33	1.37
2	A	999	A3P	C4-N9	-2.55	1.34	1.37
2	B	999	A3P	C4-N9	-2.53	1.34	1.37
2	D	999	A3P	C4-N9	-2.41	1.34	1.37

All (33) bond angle outliers are listed below:

Mol	Chain	Res	Type	Atoms	Z	Observed(°)	Ideal(°)
2	B	999	A3P	N3-C2-N1	-6.81	123.02	128.71
2	D	999	A3P	N3-C2-N1	-6.76	123.06	128.71
2	A	999	A3P	N3-C2-N1	-6.57	123.22	128.71
2	C	999	A3P	N3-C2-N1	-6.43	123.33	128.71
2	C	999	A3P	N3-C4-N9	5.61	135.56	125.43
2	A	999	A3P	N3-C4-N9	5.48	135.32	125.43
2	B	999	A3P	N3-C4-N9	5.27	134.94	125.43
2	D	999	A3P	N3-C4-N9	5.14	134.72	125.43
2	B	999	A3P	O4'-C1'-N9	3.47	111.67	108.44
2	D	999	A3P	C4-C5-N7	-3.36	106.64	109.52
2	C	999	A3P	C2'-C1'-N9	-3.25	104.91	113.27
2	D	999	A3P	O4'-C1'-N9	3.21	111.42	108.44
2	D	999	A3P	C5-C4-N3	-3.21	118.72	125.70
2	B	999	A3P	C5-C4-N3	-3.10	118.94	125.70
2	A	999	A3P	C2'-C1'-N9	-3.09	105.33	113.27
2	A	999	A3P	C5-C4-N3	-3.02	119.11	125.70
2	B	999	A3P	C4-C5-N7	-3.01	106.95	109.52
2	C	999	A3P	C5-C4-N3	-2.96	119.26	125.70
2	D	999	A3P	O6P-P2-O5P	2.58	117.66	107.61
2	D	999	A3P	C2-N3-C4	2.58	121.35	114.01
2	B	999	A3P	C2-N3-C4	2.52	121.19	114.01
2	D	999	A3P	C2'-C1'-N9	-2.39	107.14	113.27
2	C	999	A3P	C8-N9-C4	2.29	108.64	106.90
2	A	999	A3P	C2-N3-C4	2.29	120.52	114.01
2	B	999	A3P	C2'-C1'-N9	-2.28	107.42	113.27
2	A	999	A3P	C4-C5-N7	-2.24	107.61	109.52
2	D	999	A3P	O5P-P2-O5'	-2.20	100.59	106.65
2	C	999	A3P	C2-N3-C4	2.19	120.26	114.01
2	C	999	A3P	O6P-P2-O5P	2.19	116.12	107.61
2	C	999	A3P	C4-C5-N7	-2.15	107.68	109.52
2	B	999	A3P	O6P-P2-O5P	2.13	115.89	107.61
2	B	999	A3P	C8-N9-C4	2.11	108.51	106.90

*Continued on next page...*

*Continued from previous page...*

Mol	Chain	Res	Type	Atoms	Z	Observed(°)	Ideal(°)
2	A	999	A3P	C8-N9-C4	2.00	108.43	106.90

There are no chirality outliers.

There are no torsion outliers.

There are no ring outliers.

## 5.7 Other polymers ⓘ

There are no such residues in this entry.

## 5.8 Polymer linkage issues

There are no chain breaks in this entry.

## 6 Fit of model and data ⓘ

### 6.1 Protein, DNA and RNA chains ⓘ

In the following table, the column labelled ‘#RSRZ> 2’ contains the number (and percentage) of RSRZ outliers, followed by percent RSRZ outliers for the chain as percentile scores relative to all X-ray entries and entries of similar resolution. The OWAB column contains the minimum, median, 95<sup>th</sup> percentile and maximum values of the occupancy-weighted average B-factor per residue. The column labelled ‘Q< 0.9’ lists the number of (and percentage) of residues with an average occupancy less than 0.9.

Mol	Chain	Analysed	<RSRZ>	#RSRZ>2	OWAB(Å <sup>2</sup> )	Q<0.9
1	A	251/261 (96%)	0.14	11 (4%) 33 37	31, 36, 43, 50	0
1	B	252/261 (96%)	0.45	25 (9%) 8 8	31, 36, 39, 53	0
1	C	257/261 (98%)	0.06	10 (3%) 37 42	29, 36, 42, 54	0
1	D	246/261 (94%)	0.46	20 (8%) 12 13	31, 37, 42, 50	0
All	All	1006/1044 (96%)	0.27	66 (6%) 18 20	29, 36, 42, 54	0

All (66) RSRZ outliers are listed below:

Mol	Chain	Res	Type	RSRZ
1	B	229	GLY	8.2
1	B	237	TRP	6.4
1	A	237	TRP	6.3
1	B	125	PHE	6.0
1	B	234	ALA	5.5
1	D	245	CYS	5.0
1	A	256	PHE	4.9
1	B	124	ASP	4.6
1	C	243	THR	4.6
1	C	256	PHE	4.3
1	B	246	GLY	4.2
1	D	166	ALA	4.1
1	A	255	GLN	4.1
1	C	240	LYS	4.1
1	A	253	PHE	4.0
1	D	101	ASN	4.0
1	B	256	PHE	3.9
1	C	237	TRP	3.8
1	D	253	PHE	3.8
1	C	255	GLN	3.7
1	C	257	LEU	3.6

*Continued on next page...*

*Continued from previous page...*

Mol	Chain	Res	Type	RSRZ
1	D	98	GLN	3.6
1	B	127	TRP	3.6
1	B	226	VAL	3.5
1	B	258	LYS	3.5
1	D	231	ASP	3.5
1	B	247	ILE	3.3
1	B	259	GLN	3.3
1	D	222	SER	3.2
1	C	242	LYS	3.2
1	B	228	GLU	3.1
1	D	226	VAL	3.1
1	B	245	CYS	3.0
1	A	178	LEU	3.0
1	B	235	GLY	3.0
1	C	239	GLY	2.9
1	B	120	SER	2.8
1	C	238	LYS	2.8
1	D	127	TRP	2.7
1	B	231	ASP	2.7
1	A	254	ALA	2.7
1	B	118	PHE	2.6
1	D	214	TYR	2.6
1	A	244	GLU	2.6
1	D	131	ASP	2.6
1	B	126	LEU	2.5
1	B	248	HIS	2.5
1	B	119	ALA	2.4
1	D	247	ILE	2.3
1	D	125	PHE	2.3
1	D	212	LEU	2.3
1	B	116	ALA	2.2
1	D	210	LEU	2.2
1	B	122	TYR	2.2
1	B	257	LEU	2.2
1	D	169	GLN	2.2
1	D	220	TYR	2.2
1	A	252	ARG	2.1
1	D	132	ASP	2.1
1	B	123	GLY	2.1
1	A	226	VAL	2.1
1	A	231	ASP	2.1
1	D	165	SER	2.1

*Continued on next page...*



*Continued from previous page...*

Mol	Chain	Res	Type	RSRZ
1	A	124	ASP	2.1
1	C	241	ALA	2.0
1	D	203	ASN	2.0

## 6.2 Non-standard residues in protein, DNA, RNA chains [i](#)

There are no non-standard protein/DNA/RNA residues in this entry.

## 6.3 Carbohydrates [i](#)

There are no carbohydrates in this entry.

## 6.4 Ligands [i](#)

In the following table, the Atoms column lists the number of modelled atoms in the group and the number defined in the chemical component dictionary. LLDF column lists the quality of electron density of the group with respect to its neighbouring residues in protein, DNA or RNA chains. The B-factors column lists the minimum, median, 95<sup>th</sup> percentile and maximum values of B factors of atoms in the group. The column labelled 'Q < 0.9' lists the number of atoms with occupancy less than 0.9.

Mol	Type	Chain	Res	Atoms	RSR	LLDF	B-factors( $\text{\AA}^2$ )	Q<0.9
2	A3P	C	999	27/27	0.16	0.41	19,21,27,29	0
2	A3P	D	999	27/27	0.14	-0.29	30,35,43,44	0
2	A3P	B	999	27/27	0.12	-0.56	36,40,41,42	0
2	A3P	A	999	27/27	0.10	-1.46	26,27,35,36	0

## 6.5 Other polymers [i](#)

There are no such residues in this entry.