



wwPDB X-ray Structure Validation Summary Report

Feb 28, 2014 – 10:10 PM GMT

PDB ID : 1ORW
Title : Crystal Structure of Porcine Dipeptidyl Peptidase IV (CD26) in Complex with a Peptidomimetic Inhibitor
Authors : Engel, M.; Hoffmann, T.; Wagner, L.; Wermann, M.; Heiser, U.; Kiefersauer, R.; Huber, R.; Bode, W.; Demuth, H.U.; Brandstetter, H.
Deposited on : 2003-03-16
Resolution : 2.84 Å(reported)

This is a wwPDB validation summary report for a publicly released PDB entry.
We welcome your comments at validation@mail.wwpdb.org
A user guide is available at <http://wwpdb.org/ValidationPDFNotes.html>

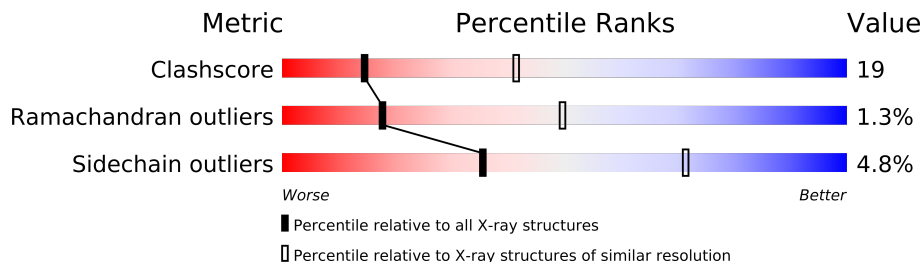
The following versions of software and data (see [references](#)) were used in the production of this report:

MolProbity	:	4.02b-467
Mogul	:	1.15 2013
Xtriage (Phenix)	:	dev-1323
EDS	:	FAILED
Percentile statistics	:	21963
Ideal geometry (proteins)	:	Engh & Huber (2001)
Ideal geometry (DNA, RNA)	:	Parkinson et. al. (1996)
Validation Pipeline (wwPDB-VP)	:	stable22683

1 Overall quality at a glance

The reported resolution of this entry is 2.84 Å.

Percentile scores (ranging between 0-100) for global validation metrics of the entry are shown in the following graphic. The table shows the number of entries on which the scores are based.



Metric	Whole archive (#Entries)	Similar resolution (#Entries, resolution range(Å))
Clashscore	79885	2848 (2.88-2.80)
Ramachandran outliers	78287	2786 (2.88-2.80)
Sidechain outliers	78261	2789 (2.88-2.80)

The table below summarises the geometric issues observed across the polymeric chains and their fit to the electron density. The red, orange, yellow and green segments on the lower bar indicate the fraction of residues that contain outliers for ≥ 3 , 2, 1 and 0 types of geometric quality criteria. The upper red bar (where present) indicates the fraction of residues that have poor fit to the electron density.

Note EDS failed to run properly.

Mol	Chain	Length	Quality of chain
1	A	728	
1	B	728	
1	C	728	
1	D	728	

2 Entry composition i

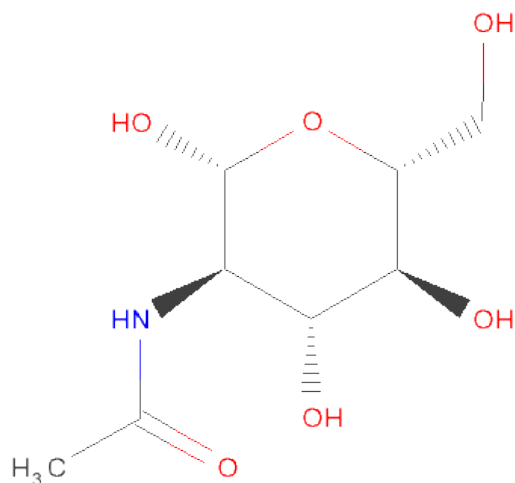
There are 7 unique types of molecules in this entry. The entry contains 25262 atoms, of which 0 are hydrogen and 0 are deuterium.

In the tables below, the ZeroOcc column contains the number of atoms modelled with zero occupancy, the AltConf column contains the number of residues with at least one atom in alternate conformation and the Trace column contains the number of residues modelled with at most 2 atoms.

- Molecule 1 is a protein called dipeptidyl peptidase IV.

Mol	Chain	Residues	Atoms					ZeroOcc	AltConf	Trace
1	A	728	Total	C	N	O	S	71	0	0
			5966	3825	986	1132	23			
1	B	728	Total	C	N	O	S	42	0	0
			5966	3825	986	1132	23			
1	C	728	Total	C	N	O	S	62	0	0
			5966	3825	986	1132	23			
1	D	728	Total	C	N	O	S	36	0	0
			5966	3825	986	1132	23			

- Molecule 2 is SUGAR (N-ACETYL-D-GLUCOSAMINE) (three-letter code: NAG) (formula: $C_8H_{15}NO_6$).



Mol	Chain	Residues	Atoms				ZeroOcc	AltConf
2	A	1	Total	C	N	O	0	0
			14	8	1	5		
2	A	1	Total	C	N	O	0	0
			14	8	1	5		

Continued on next page...

Continued from previous page...

Mol	Chain	Residues	Atoms				ZeroOcc	AltConf
2	A	1	Total	C	N	O	3	0
			14	8	1	5		
2	A	1	Total	C	N	O	0	0
			14	8	1	5		
2	B	1	Total	C	N	O	0	0
			14	8	1	5		
2	B	1	Total	C	N	O	0	0
			14	8	1	5		
2	B	1	Total	C	N	O	0	0
			14	8	1	5		
2	B	1	Total	C	N	O	0	0
			14	8	1	5		
2	C	1	Total	C	N	O	0	0
			14	8	1	5		
2	C	1	Total	C	N	O	0	0
			14	8	1	5		
2	C	1	Total	C	N	O	0	0
			14	8	1	5		
2	C	1	Total	C	N	O	0	0
			14	8	1	5		
2	D	1	Total	C	N	O	0	0
			14	8	1	5		
2	D	1	Total	C	N	O	0	0
			14	8	1	5		

- Molecule 3 is a polymer of unknown type called SUGAR (2-MER).

Mol	Chain	Residues	Atoms				ZeroOcc	AltConf
3	A	2	Total	C	N	O	0	0
			28	16	2	10		
3	A	2	Total	C	N	O	0	0
			28	16	2	10		
3	B	2	Total	C	N	O	0	0
			28	16	2	10		
3	C	2	Total	C	N	O	0	0
			28	16	2	10		
3	D	2	Total	C	N	O	0	0
			28	16	2	10		
3	D	2	Total	C	N	O	0	0
			28	16	2	10		

Continued on next page...

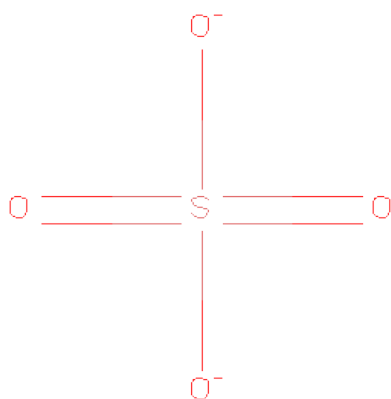
Continued from previous page...

Mol	Chain	Residues	Atoms				ZeroOcc	AltConf
3	D	2	Total	C	N	O	0	0
			28	16	2	10		

- Molecule 4 is a polymer of unknown type called SUGAR (3-MER).

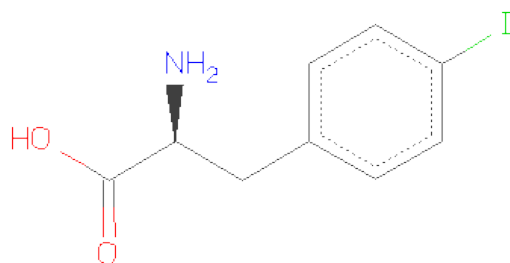
Mol	Chain	Residues	Atoms				ZeroOcc	AltConf
4	B	3	Total	C	N	O	0	0
			39	22	2	15		
4	D	3	Total	C	N	O	0	0
			39	22	2	15		

- Molecule 5 is SULFATE ION (three-letter code: SO₄) (formula: O₄S).



Mol	Chain	Residues	Atoms			ZeroOcc	AltConf
5	A	1	Total	O	S	0	0
			5	4	1		
5	B	1	Total	O	S	0	0
			5	4	1		
5	C	1	Total	O	S	0	0
			5	4	1		
5	D	1	Total	O	S	0	0
			5	4	1		

- Molecule 6 is IODO-PHENYLALANINE (three-letter code: PHI, P2Y) (formula: C₉H₁₀INO₂, C₅H₁₂N₂).



Mol	Chain	Residues	Atoms					ZeroOcc	AltConf
6	A	2	Total	C	I	N	O	0	0
			19	14	1	3	1		
6	B	2	Total	C	I	N	O	0	0
			19	14	1	3	1		
6	C	2	Total	C	I	N	O	0	0
			19	14	1	3	1		
6	D	2	Total	C	I	N	O	0	0
			19	14	1	3	1		

- Molecule 7 is water.

Mol	Chain	Residues	Atoms		ZeroOcc	AltConf
7	A	206	Total	O	0	0
			206	206		
7	B	226	Total	O	0	0
			226	226		
7	C	213	Total	O	0	0
			213	213		
7	D	173	Total	O	0	0
			173	173		

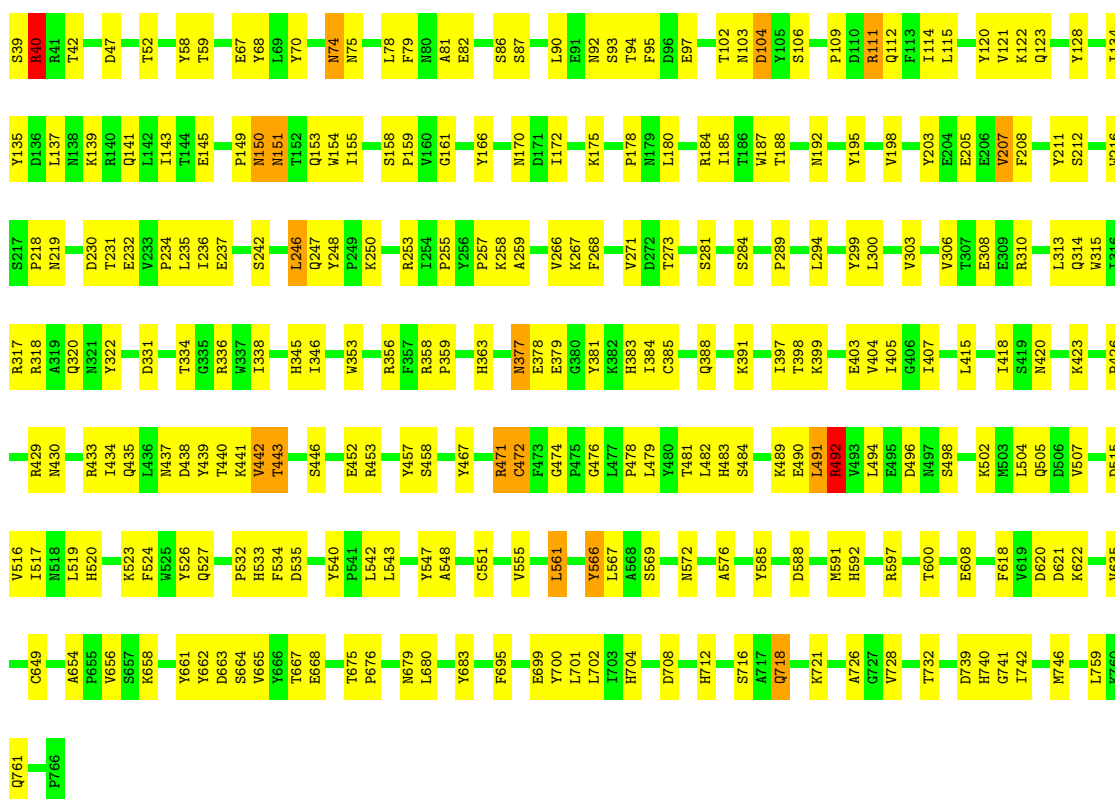
3 Residue-property plots

These plots are drawn for all protein, RNA and DNA chains in the entry. The first graphic for a chain summarises the proportions of errors displayed in the second graphic. The second graphic shows the sequence view annotated by issues in geometry and electron density. Residues are color-coded according to the number of geometric quality criteria for which they contain at least one outlier: green = 0, yellow = 1, orange = 2 and red = 3 or more. A red dot above a residue indicates a poor fit to the electron density ($RSRZ > 2$). Stretches of 2 or more consecutive residues without any outlier are shown as a green connector. Residues present in the sample, but not in the model, are shown in grey.

Note EDS failed to run properly.

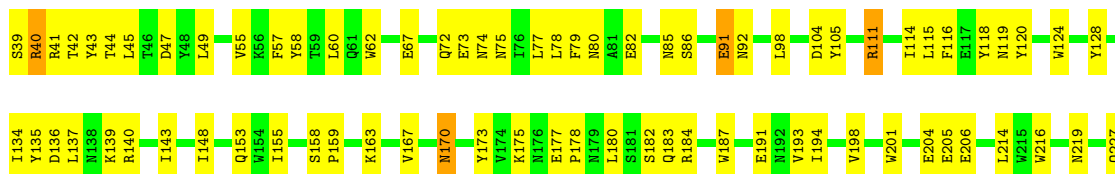
- Molecule 1: dipeptidyl peptidase IV

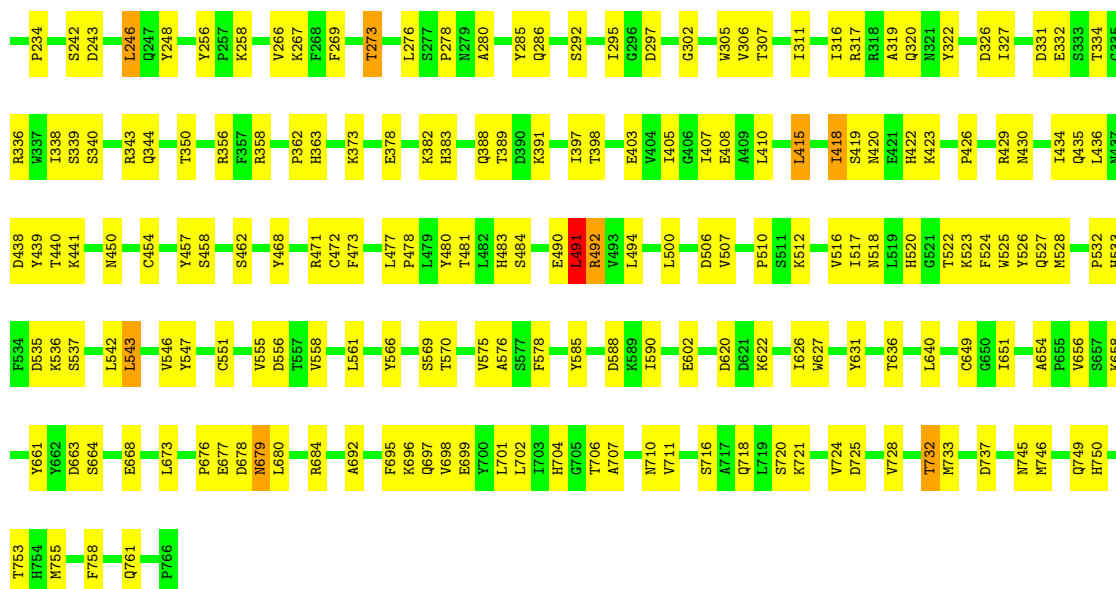
Chain A:



- Molecule 1: dipeptidyl peptidase IV

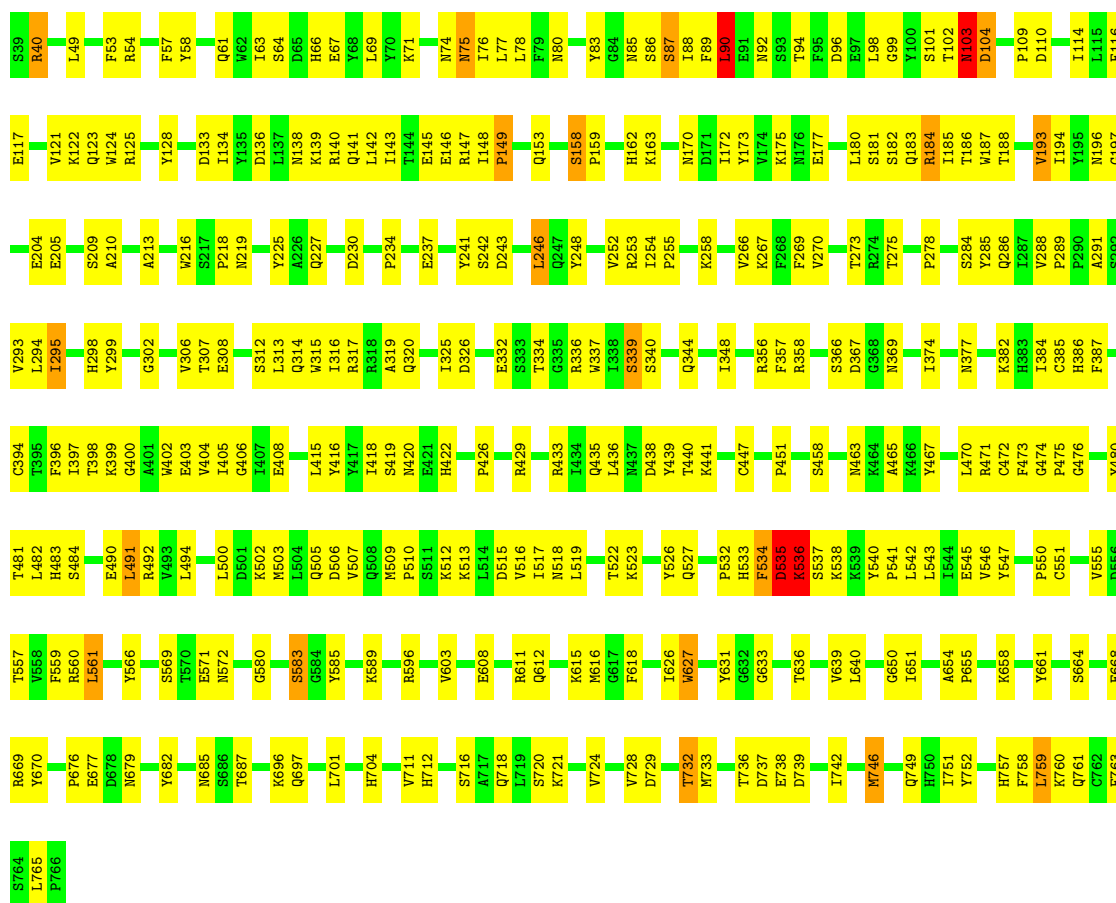
Chain B:





• Molecule 1: dipeptidyl peptidase IV

Chain C:



• Molecule 1: dipeptidyl peptidase IV

Chain D:

[illegible]

4 Data and refinement statistics

EDS failed to run properly - this section will therefore be incomplete.

Property	Value	Source
Space group	P 1	Depositor
Cell constants a, b, c, α , β , γ	61.97Å 117.71Å 133.56Å 112.65° 94.81° 91.17°	Depositor
Resolution (Å)	29.79 – 2.84	Depositor
% Data completeness (in resolution range)	96.3 (29.79-2.84)	Depositor
R_{merge}	(Not available)	Depositor
R_{sym}	(Not available)	Depositor
$\langle I/\sigma(I) \rangle$ ¹	3.12 (at 2.85Å)	Xtriage
Refinement program	CNS 1.1	Depositor
R, R_{free}	0.187 , 0.246	Depositor
Wilson B-factor (Å ²)	30.5	Xtriage
Anisotropy	0.613	Xtriage
Estimated twinning fraction	No twinning to report.	Xtriage
L-test for twinning	$\langle L \rangle = 0.49$, $\langle L^2 \rangle = 0.33$	Xtriage
Outliers	0 of 157559 reflections	Xtriage
Total number of atoms	25262	wwPDB-VP
Average B, all atoms (Å ²)	30.0	wwPDB-VP

Xtriage's analysis on translational NCS is as follows: *The largest off-origin peak in the Patterson function is 3.48% of the height of the origin peak. No significant pseudotranslation is detected.*

¹Intensities estimated from amplitudes.

5 Model quality

5.1 Standard geometry

Bond lengths and bond angles in the following residue types are not validated in this section: PHI, BMA, P2Y, NAG, SO4

The Z score for a bond length (or angle) is the number of standard deviations the observed value is removed from the expected value. A bond length (or angle) with $|Z| > 5$ is considered an outlier worth inspection. RMSZ is the root-mean-square of all Z scores of the bond lengths (or angles).

Mol	Chain	Bond lengths		Bond angles	
		RMSZ	$\# Z > 5$	RMSZ	$\# Z > 5$
1	A	0.42	0/6141	0.67	1/8353 (0.0%)
1	B	0.42	0/6141	0.67	1/8353 (0.0%)
1	C	0.43	0/6141	0.70	2/8353 (0.0%)
1	D	0.39	0/6141	0.66	1/8353 (0.0%)
All	All	0.42	0/24564	0.68	5/33412 (0.0%)

Chiral center outliers are detected by calculating the chiral volume of a chiral center and verifying if the center is modelled as a planar moiety or with the opposite hand. A planarity outlier is detected by checking planarity of atoms in a peptide group, atoms in a mainchain group or atoms of a sidechain that are expected to be planar.

Mol	Chain	#Chirality outliers	#Planarity outliers
1	B	0	1

There are no bond length outliers.

All (5) bond angle outliers are listed below:

Mol	Chain	Res	Type	Atoms	Z	Observed(°)	Ideal(°)
1	C	104	ASP	N-CA-C	-8.55	87.90	111.00
1	C	103	ASN	N-CA-C	7.38	130.91	111.00
1	B	656	VAL	N-CA-C	-5.32	96.65	111.00
1	A	656	VAL	N-CA-C	-5.18	97.01	111.00
1	D	656	VAL	N-CA-C	-5.09	97.26	111.00

There are no chirality outliers.

All (1) planarity outliers are listed below:

Mol	Chain	Res	Type	Group
1	B	468	TYR	Sidechain

5.2 Close contacts ⓘ

In the following table, the Non-H and H(model) columns list the number of non-hydrogen atoms and hydrogen atoms in the chain respectively. The H(added) column lists the number of hydrogens added by MolProbity. The Clashes column lists the number of clashes within the asymmetric unit, and the number in parentheses is this value normalized per 1000 atoms of the molecule in the chain. The Symm-Clashes column gives symmetry related clashes, in the same way as for the Clashes column.

Mol	Chain	Non-H	H(model)	H(added)	Clashes	Symm-Clashes
1	A	5966	0	5662	207	0
1	B	5966	0	5662	212	0
1	C	5966	0	5661	264	0
1	D	5966	0	5662	247	0
2	A	56	0	52	1	0
2	B	56	0	52	5	0
2	C	70	0	65	2	0
2	D	28	0	26	1	0
3	A	56	0	50	1	0
3	B	28	0	25	0	0
3	C	28	0	25	0	0
3	D	84	0	75	1	0
4	B	39	0	34	1	0
4	D	39	0	34	2	0
5	A	5	0	0	0	0
5	B	5	0	0	0	0
5	C	5	0	0	0	0
5	D	5	0	0	0	0
6	A	19	0	18	5	0
6	B	19	0	18	7	0
6	C	19	0	18	7	0
6	D	19	0	18	8	0
7	A	206	0	0	10	0
7	B	226	0	0	14	0
7	C	213	0	0	18	0
7	D	173	0	0	5	0
All	All	25262	0	23157	910	0

Clashscore is defined as the number of clashes calculated for the entry per 1000 atoms (including hydrogens) of the entry. The overall clashscore for this entry is 19.

The worst 5 of 910 close contacts within the same asymmetric unit are listed below.

Atom-1	Atom-2	Distance(Å)	Clash(Å)
1:D:358:ARG:NH2	6:D:807:PHI:I	2.51	1.13

Continued on next page...

Continued from previous page...

Atom-1	Atom-2	Distance(Å)	Clash(Å)
1:B:358:ARG:NH2	6:B:803:PHI:I	2.57	1.08
1:A:358:ARG:NH2	6:A:801:PHI:I	2.60	1.05
1:B:358:ARG:NH1	6:B:803:PHI:I	2.65	0.99
1:C:535:ASP:C	1:C:536:LYS:HD3	1.83	0.99

There are no symmetry-related clashes.

5.3 Torsion angles

5.3.1 Protein backbone ⓘ

In the following table, the Percentiles column shows the percent Ramachandran outliers of the chain as a percentile score with respect to all X-ray entries followed by that with respect to entries of similar resolution. The Analysed column shows the number of residues for which the backbone conformation was analysed, and the total number of residues.

Mol	Chain	Analysed	Favoured	Allowed	Outliers	Percentiles	
1	A	726/728 (100%)	656 (90%)	58 (8%)	12 (2%)	14	40
1	B	726/728 (100%)	670 (92%)	50 (7%)	6 (1%)	27	64
1	C	726/728 (100%)	652 (90%)	59 (8%)	15 (2%)	11	32
1	D	726/728 (100%)	656 (90%)	64 (9%)	6 (1%)	27	64
All	All	2904/2912 (100%)	2634 (91%)	231 (8%)	39 (1%)	18	49

5 of 39 Ramachandran outliers are listed below:

Mol	Chain	Res	Type
1	A	40	ARG
1	B	40	ARG
1	C	103	ASN
1	C	534	PHE
1	C	535	ASP

5.3.2 Protein sidechains ⓘ

In the following table, the Percentiles column shows the percent sidechain outliers of the chain as a percentile score with respect to all X-ray entries followed by that with respect to entries of similar resolution. The Analysed column shows the number of residues for which the sidechain conformation was analysed, and the total number of residues.

Mol	Chain	Analysed	Rotameric	Outliers	Percentiles	
1	A	652/652 (100%)	620 (95%)	32 (5%)	35	70
1	B	652/652 (100%)	626 (96%)	26 (4%)	42	78
1	C	652/652 (100%)	618 (95%)	34 (5%)	32	68
1	D	652/652 (100%)	620 (95%)	32 (5%)	35	70
All	All	2608/2608 (100%)	2484 (95%)	124 (5%)	35	71

5 of 124 residues with a non-rotameric sidechain are listed below:

Mol	Chain	Res	Type
1	B	745	ASN
1	C	348	ILE
1	D	566	TYR
1	B	761	GLN
1	C	158	SER

Some sidechains can be flipped to improve hydrogen bonding and reduce clashes. 5 of 110 such sidechains are listed below:

Mol	Chain	Res	Type
1	B	595	ASN
1	C	103	ASN
1	D	483	HIS
1	B	612	GLN
1	B	718	GLN

5.3.3 RNA ⓘ

There are no RNA chains in this entry.

5.4 Non-standard residues in protein, DNA, RNA chains ⓘ

There are no non-standard protein/DNA/RNA residues in this entry.

5.5 Carbohydrates ⓘ

20 carbohydrates are modelled in this entry.

In the following table, the Counts columns list the number of bonds (or angles) for which Mogul statistics could be retrieved, the number of bonds (or angles) that are observed in the model and the number of bonds (or angles) that are defined in the chemical component dictionary. The Link

column lists molecule types, if any, to which the group is linked. The Z score for a bond length (or angle) is the number of standard deviations the observed value is removed from the expected value. A bond length (or angle) with $|Z| > 2$ is considered an outlier worth inspection. RMSZ is the root-mean-square of all Z scores of the bond lengths (or angles).

Mol	Type	Chain	Res	Link	Bond lengths			Bond angles		
					Counts	RMSZ	$\# Z > 2$	Counts	RMSZ	$\# Z > 2$
3	NAG	A	769(A)	1,3	12,14,15	0.48	0	15,19,21	0.60	0
3	NAG	A	770(B)	3	12,14,15	0.46	0	15,19,21	0.83	0
3	NAG	A	773(A)	1,3	12,14,15	0.45	0	15,19,21	0.87	0
3	NAG	A	774(B)	3	12,14,15	0.45	0	15,19,21	0.71	0
4	NAG	B	768(A)	1,4	12,14,15	0.48	0	15,19,21	0.94	0
4	NAG	B	769(B)	4	12,14,15	0.56	0	15,19,21	0.83	0
4	BMA	B	770(C)	4	10,11,12	0.40	0	11,15,17	0.29	0
3	NAG	B	774(A)	1,3	12,14,15	0.41	0	15,19,21	1.02	0
3	NAG	B	775(B)	3	12,14,15	0.44	0	15,19,21	0.89	1 (6%)
3	NAG	C	772(A)	1,3	12,14,15	0.42	0	15,19,21	0.80	1 (6%)
3	NAG	C	773(B)	3	12,14,15	0.40	0	15,19,21	0.93	1 (6%)
4	NAG	D	768(A)	1,4	12,14,15	0.44	0	15,19,21	0.83	0
4	NAG	D	769(B)	4	12,14,15	0.53	0	15,19,21	0.49	0
4	BMA	D	770(C)	4	10,11,12	0.52	0	11,15,17	0.57	0
3	NAG	D	771(A)	1,3	12,14,15	0.53	0	15,19,21	0.67	0
3	NAG	D	772(B)	3	12,14,15	0.46	0	15,19,21	0.69	0
3	NAG	D	774(A)	1,3	12,14,15	0.56	0	15,19,21	1.15	1 (6%)
3	NAG	D	775(B)	3	12,14,15	0.47	0	15,19,21	0.73	1 (6%)
3	NAG	D	776(A)	1,3	12,14,15	0.52	0	15,19,21	0.73	0
3	NAG	D	777(B)	3	12,14,15	0.39	0	15,19,21	0.95	1 (6%)

In the following table, the Chirals column lists the number of chiral outliers, the number of chiral centers analysed, the number of these observed in the model and the number defined in the chemical component dictionary. Similar counts are reported in the Torsion and Rings columns. '-' means no outliers of that kind were identified.

Mol	Type	Chain	Res	Link	Chirals	Torsions	Rings
3	NAG	A	769(A)	1,3	-	0/6/23/26	0/1/1/1
3	NAG	A	770(B)	3	-	0/6/23/26	0/1/1/1
3	NAG	A	773(A)	1,3	-	0/6/23/26	0/1/1/1
3	NAG	A	774(B)	3	-	0/6/23/26	0/1/1/1
4	NAG	B	768(A)	1,4	-	0/6/23/26	0/1/1/1
4	NAG	B	769(B)	4	-	0/6/23/26	0/1/1/1
4	BMA	B	770(C)	4	-	0/2/19/22	0/1/1/1
3	NAG	B	774(A)	1,3	-	0/6/23/26	0/1/1/1
3	NAG	B	775(B)	3	-	0/6/23/26	0/1/1/1
3	NAG	C	772(A)	1,3	-	0/6/23/26	0/1/1/1

Continued on next page...

Continued from previous page...

Mol	Type	Chain	Res	Link	Chirals	Torsions	Rings
3	NAG	C	773(B)	3	-	0/6/23/26	0/1/1/1
4	NAG	D	768(A)	1,4	-	0/6/23/26	0/1/1/1
4	NAG	D	769(B)	4	-	1/6/23/26	0/1/1/1
4	BMA	D	770(C)	4	-	0/2/19/22	0/1/1/1
3	NAG	D	771(A)	1,3	-	0/6/23/26	0/1/1/1
3	NAG	D	772(B)	3	-	0/6/23/26	0/1/1/1
3	NAG	D	774(A)	1,3	-	0/6/23/26	0/1/1/1
3	NAG	D	775(B)	3	-	0/6/23/26	0/1/1/1
3	NAG	D	776(A)	1,3	-	0/6/23/26	0/1/1/1
3	NAG	D	777(B)	3	-	0/6/23/26	0/1/1/1

There are no bond length outliers.

The worst 5 of 6 bond angle outliers are listed below:

Mol	Chain	Res	Type	Atoms	Z	Observed(°)	Ideal(°)
3	D	774(A)	NAG	C3-C4-C5	-2.24	106.20	110.20
3	B	775(B)	NAG	C3-C2-N2	-2.24	108.35	111.76
3	C	773(B)	NAG	C3-C2-N2	-2.23	108.37	111.76
3	D	775(B)	NAG	C2-N2-C7	-2.09	119.59	123.09
3	D	777(B)	NAG	C6-C5-C4	-2.07	108.00	113.00

There are no chirality outliers.

All (1) torsion outliers are listed below:

Mol	Chain	Res	Type	Atoms
4	D	769(B)	NAG	C3-C2-N2-C7

There are no ring outliers.

5.6 Ligand geometry ⓘ

27 ligands are modelled in this entry.

In the following table, the Counts columns list the number of bonds (or angles) for which Mogul statistics could be retrieved, the number of bonds (or angles) that are observed in the model and the number of bonds (or angles) that are defined in the chemical component dictionary. The Link column lists molecule types, if any, to which the group is linked. The Z score for a bond length (or angle) is the number of standard deviations the observed value is removed from the expected value. A bond length (or angle) with $|Z| > 2$ is considered an outlier worth inspection. RMSZ is the root-mean-square of all Z scores of the bond lengths (or angles).

Mol	Type	Chain	Res	Link	Bond lengths			Bond angles		
					Counts	RMSZ	# Z > 2	Counts	RMSZ	# Z > 2
2	NAG	A	767(A)	1	12,14,15	0.45	0	15,19,21	0.63	0
2	NAG	A	768(A)	1	12,14,15	0.42	0	15,19,21	0.84	0
2	NAG	A	771(A)	1	12,14,15	0.42	0	15,19,21	0.70	0
2	NAG	A	772(A)	1	12,14,15	0.45	0	15,19,21	0.84	1 (6%)
6	PHI	A	801	6	12,12,13	5.38	2 (16%)	13,15,17	0.69	1 (7%)
6	P2Y	A	802	1,6	7,7,7	1.76	1 (14%)	8,8,8	1.58	1 (12%)
5	SO4	A	900	-	4,4,4	0.65	0	6,6,6	0.59	0
2	NAG	B	767(A)	1	12,14,15	0.44	0	15,19,21	0.71	0
2	NAG	B	771(A)	1	12,14,15	0.48	0	15,19,21	0.69	0
2	NAG	B	772(A)	1	12,14,15	0.61	0	15,19,21	0.76	0
2	NAG	B	773(A)	1	12,14,15	0.40	0	15,19,21	0.84	1 (6%)
6	PHI	B	803	6	12,12,13	5.16	2 (16%)	13,15,17	0.83	1 (7%)
6	P2Y	B	804	1,6	7,7,7	2.20	1 (14%)	8,8,8	1.32	2 (25%)
5	SO4	B	901	-	4,4,4	0.54	0	6,6,6	0.66	0
2	NAG	C	767(A)	1	12,14,15	0.46	0	15,19,21	0.98	1 (6%)
2	NAG	C	768(A)	1	12,14,15	0.45	0	15,19,21	0.70	0
2	NAG	C	769(A)	1	12,14,15	0.44	0	15,19,21	0.68	0
2	NAG	C	770(A)	1	12,14,15	0.60	0	15,19,21	0.48	0
2	NAG	C	771(A)	1	12,14,15	0.56	0	15,19,21	1.12	0
6	PHI	C	805	6	12,12,13	5.44	2 (16%)	13,15,17	0.34	0
6	P2Y	C	806	1,6	7,7,7	1.71	1 (14%)	8,8,8	1.31	1 (12%)
5	SO4	C	902	-	4,4,4	0.48	0	6,6,6	0.70	0
2	NAG	D	767(A)	1	12,14,15	0.46	0	15,19,21	0.72	0
2	NAG	D	773(A)	1	12,14,15	0.54	0	15,19,21	0.81	0
6	PHI	D	807	6	12,12,13	5.50	1 (8%)	13,15,17	1.07	1 (7%)
6	P2Y	D	808	1,6	7,7,7	2.01	1 (14%)	8,8,8	1.51	1 (12%)
5	SO4	D	903	-	4,4,4	0.63	0	6,6,6	0.66	0

In the following table, the Chirals column lists the number of chiral outliers, the number of chiral centers analysed, the number of these observed in the model and the number defined in the chemical component dictionary. Similar counts are reported in the Torsion and Rings columns. '-' means no outliers of that kind were identified.

Mol	Type	Chain	Res	Link	Chirals	Torsions	Rings
2	NAG	A	767(A)	1	-	0/6/23/26	0/1/1/1
2	NAG	A	768(A)	1	-	2/6/23/26	0/1/1/1
2	NAG	A	771(A)	1	-	0/6/23/26	0/1/1/1
2	NAG	A	772(A)	1	-	0/6/23/26	0/1/1/1
6	PHI	A	801	6	-	0/4/6/8	0/1/1/1
6	P2Y	A	802	1,6	-	0/2/9/9	0/1/1/1

Continued on next page...

Continued from previous page...

Mol	Type	Chain	Res	Link	Chirals	Torsions	Rings
5	SO4	A	900	-	-	0/0/0/0	0/0/0/0
2	NAG	B	767(A)	1	-	0/6/23/26	0/1/1/1
2	NAG	B	771(A)	1	-	0/6/23/26	0/1/1/1
2	NAG	B	772(A)	1	-	0/6/23/26	0/1/1/1
2	NAG	B	773(A)	1	-	0/6/23/26	0/1/1/1
6	PHI	B	803	6	-	0/4/6/8	0/1/1/1
6	P2Y	B	804	1,6	-	0/2/9/9	0/1/1/1
5	SO4	B	901	-	-	0/0/0/0	0/0/0/0
2	NAG	C	767(A)	1	-	0/6/23/26	0/1/1/1
2	NAG	C	768(A)	1	-	1/6/23/26	0/1/1/1
2	NAG	C	769(A)	1	-	0/6/23/26	0/1/1/1
2	NAG	C	770(A)	1	-	0/6/23/26	0/1/1/1
2	NAG	C	771(A)	1	-	0/6/23/26	0/1/1/1
6	PHI	C	805	6	-	0/4/6/8	0/1/1/1
6	P2Y	C	806	1,6	-	0/2/9/9	0/1/1/1
5	SO4	C	902	-	-	0/0/0/0	0/0/0/0
2	NAG	D	767(A)	1	-	0/6/23/26	0/1/1/1
2	NAG	D	773(A)	1	-	1/6/23/26	0/1/1/1
6	PHI	D	807	6	-	0/4/6/8	0/1/1/1
6	P2Y	D	808	1,6	-	0/2/9/9	0/1/1/1
5	SO4	D	903	-	-	0/0/0/0	0/0/0/0

The worst 5 of 11 bond length outliers are listed below:

Mol	Chain	Res	Type	Atoms	Z	Observed(Å)	Ideal(Å)
6	D	807	PHI	O-C	18.82	1.24	1.11
6	C	805	PHI	O-C	18.56	1.24	1.11
6	A	801	PHI	O-C	18.28	1.24	1.11
6	B	803	PHI	O-C	17.68	1.23	1.11
6	B	804	P2Y	C-NA	-5.53	1.32	1.47

The worst 5 of 11 bond angle outliers are listed below:

Mol	Chain	Res	Type	Atoms	Z	Observed(°)	Ideal(°)
6	B	803	PHI	C-CA-N	2.89	116.72	113.83
6	D	807	PHI	C-CA-N	2.63	116.46	113.83
2	B	773(A)	NAG	C2-N2-C7	-2.61	118.71	123.09
6	D	808	P2Y	CA-C-NA	2.52	122.22	112.67
6	B	804	P2Y	CD-N-CA	2.39	111.12	106.43

There are no chirality outliers.

All (4) torsion outliers are listed below:

Mol	Chain	Res	Type	Atoms
2	A	768(A)	NAG	C8-C7-N2-C2
2	A	768(A)	NAG	O7-C7-N2-C2
2	D	773(A)	NAG	O7-C7-N2-C2
2	C	768(A)	NAG	O7-C7-N2-C2

There are no ring outliers.

5.7 Other polymers ⓘ

There are no such residues in this entry.

5.8 Polymer linkage issues

There are no chain breaks in this entry.

6 Fit of model and data ⓘ

6.1 Protein, DNA and RNA chains ⓘ

EDS failed to run properly - this section will therefore be empty.

6.2 Non-standard residues in protein, DNA, RNA chains ⓘ

EDS failed to run properly - this section will therefore be empty.

6.3 Carbohydrates ⓘ

EDS failed to run properly - this section will therefore be empty.

6.4 Ligands ⓘ

EDS failed to run properly - this section will therefore be empty.

6.5 Other polymers ⓘ

EDS failed to run properly - this section will therefore be empty.