



Full wwPDB X-ray Structure Validation Report

Mar 1, 2014 – 04:39 AM GMT

PDB ID : 3ORX
Title : PDK1 mutant bound to allosteric disulfide fragment inhibitor 1F8
Authors : Sadowsky, J.D.; Wells, J.A.
Deposited on : 2010-09-08
Resolution : 2.20 Å(reported)

This is a full wwPDB validation report for a publicly released PDB entry.
We welcome your comments at validation@mail.wwpdb.org
A user guide is available at <http://wwpdb.org/ValidationPDFNotes.html>

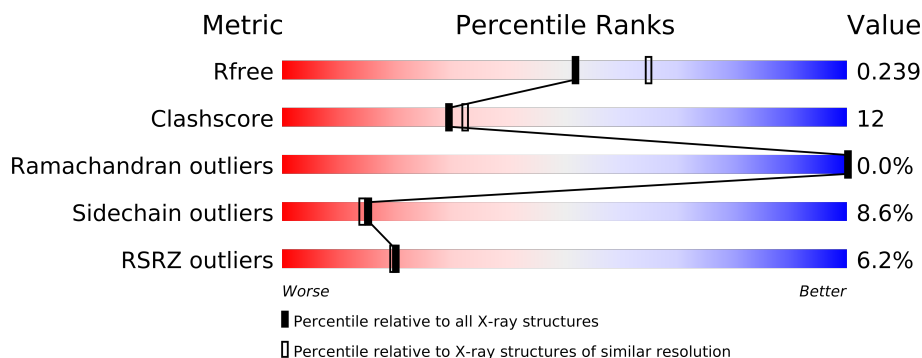
The following versions of software and data (see [references](#)) were used in the production of this report:

MolProbity : 4.02b-467
Mogul : 1.15 2013
Xtriage (Phenix) : dev-1323
EDS : stable22639
Percentile statistics : 21963
Refmac : 5.8.0049
CCP4 : 6.3.0 (Settle)
Ideal geometry (proteins) : Engh & Huber (2001)
Ideal geometry (DNA, RNA) : Parkinson et. al. (1996)
Validation Pipeline (wwPDB-VP) : stable22683

1 Overall quality at a glance

The reported resolution of this entry is 2.20 Å.

Percentile scores (ranging between 0-100) for global validation metrics of the entry are shown in the following graphic. The table shows the number of entries on which the scores are based.



Metric	Whole archive (#Entries)	Similar resolution (#Entries, resolution range(Å))
R_{free}	66092	2938 (2.20-2.20)
Clashscore	79885	3751 (2.20-2.20)
Ramachandran outliers	78287	3681 (2.20-2.20)
Sidechain outliers	78261	3682 (2.20-2.20)
RSRZ outliers	66119	2939 (2.20-2.20)

The table below summarises the geometric issues observed across the polymeric chains and their fit to the electron density. The red, orange, yellow and green segments on the lower bar indicate the fraction of residues that contain outliers for ≥ 3 , 2, 1 and 0 types of geometric quality criteria. The upper red bar (where present) indicates the fraction of residues that have poor fit to the electron density.

Mol	Chain	Length	Quality of chain
1	A	316	
1	B	316	
1	C	316	
1	D	316	
1	E	316	
1	F	316	
1	G	316	
1	H	316	

The following table lists non-polymeric compounds that are outliers for geometric or electron-density-fit criteria:

Mol	Type	Chain	Res	Geometry	Electron density
2	1F8	A	1	-	X

Continued on next page...

Continued from previous page...

Mol	Type	Chain	Res	Geometry	Electron density
2	1F8	B	1	-	X
2	1F8	C	1	-	X
2	1F8	E	1	-	X
2	1F8	F	1	-	X
2	1F8	G	1	-	X
2	1F8	H	1	-	X
3	CL	A	2	-	X

2 Entry composition

There are 4 unique types of molecules in this entry. The entry contains 19043 atoms, of which 0 are hydrogen and 0 are deuterium.

In the tables below, the ZeroOcc column contains the number of atoms modelled with zero occupancy, the AltConf column contains the number of residues with at least one atom in alternate conformation and the Trace column contains the number of residues modelled with at most 2 atoms.

- Molecule 1 is a protein called 3-phosphoinositide-dependentprotein kinase 1.

Mol	Chain	Residues	Atoms						ZeroOcc	AltConf	Trace
1	A	284	Total	C	N	O	P	S	0	0	0
			2271	1476	374	412	1	8			
1	B	281	Total	C	N	O	P	S	0	0	0
			2262	1470	368	415	1	8			
1	C	284	Total	C	N	O	P	S	0	0	0
			2264	1469	369	417	1	8			
1	D	283	Total	C	N	O	P	S	0	0	0
			2256	1468	370	409	1	8			
1	E	274	Total	C	N	O	S		0	0	0
			2163	1415	354	386	8				
1	F	275	Total	C	N	O	P	S	0	0	0
			2132	1391	348	384	1	8			
1	G	275	Total	C	N	O	P	S	0	0	0
			2155	1406	352	388	1	8			
1	H	275	Total	C	N	O	P	S	0	0	0
			2114	1379	342	384	1	8			

There are 64 discrepancies between the modelled and reference sequences:

Chain	Residue	Modelled	Actual	Comment	Reference
A	44	GLY	-	EXPRESSION TAG	UNP O15530
A	45	ALA	-	EXPRESSION TAG	UNP O15530
A	46	MET	-	EXPRESSION TAG	UNP O15530
A	47	ASP	-	EXPRESSION TAG	UNP O15530
A	48	PRO	-	EXPRESSION TAG	UNP O15530
A	49	GLU	-	EXPRESSION TAG	UNP O15530
A	50	PHE	-	EXPRESSION TAG	UNP O15530
A	148	CYS	THR	ENGINEERED MUTATION	UNP O15530
B	44	GLY	-	EXPRESSION TAG	UNP O15530
B	45	ALA	-	EXPRESSION TAG	UNP O15530
B	46	MET	-	EXPRESSION TAG	UNP O15530
B	47	ASP	-	EXPRESSION TAG	UNP O15530
B	48	PRO	-	EXPRESSION TAG	UNP O15530

Continued on next page...

Continued from previous page...

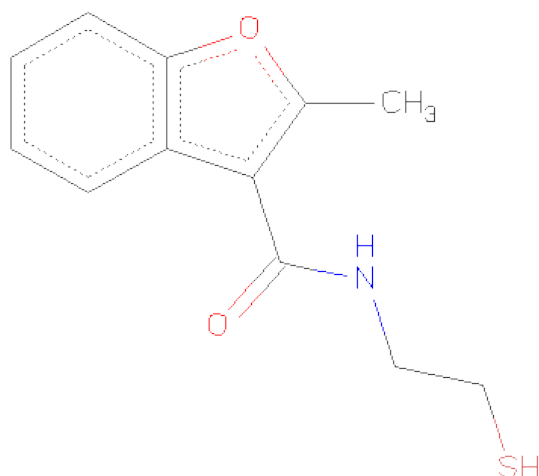
Chain	Residue	Modelled	Actual	Comment	Reference
B	49	GLU	-	EXPRESSION TAG	UNP O15530
B	50	PHE	-	EXPRESSION TAG	UNP O15530
B	148	CYS	THR	ENGINEERED MUTATION	UNP O15530
C	44	GLY	-	EXPRESSION TAG	UNP O15530
C	45	ALA	-	EXPRESSION TAG	UNP O15530
C	46	MET	-	EXPRESSION TAG	UNP O15530
C	47	ASP	-	EXPRESSION TAG	UNP O15530
C	48	PRO	-	EXPRESSION TAG	UNP O15530
C	49	GLU	-	EXPRESSION TAG	UNP O15530
C	50	PHE	-	EXPRESSION TAG	UNP O15530
C	148	CYS	THR	ENGINEERED MUTATION	UNP O15530
D	44	GLY	-	EXPRESSION TAG	UNP O15530
D	45	ALA	-	EXPRESSION TAG	UNP O15530
D	46	MET	-	EXPRESSION TAG	UNP O15530
D	47	ASP	-	EXPRESSION TAG	UNP O15530
D	48	PRO	-	EXPRESSION TAG	UNP O15530
D	49	GLU	-	EXPRESSION TAG	UNP O15530
D	50	PHE	-	EXPRESSION TAG	UNP O15530
D	148	CYS	THR	ENGINEERED MUTATION	UNP O15530
E	44	GLY	-	EXPRESSION TAG	UNP O15530
E	45	ALA	-	EXPRESSION TAG	UNP O15530
E	46	MET	-	EXPRESSION TAG	UNP O15530
E	47	ASP	-	EXPRESSION TAG	UNP O15530
E	48	PRO	-	EXPRESSION TAG	UNP O15530
E	49	GLU	-	EXPRESSION TAG	UNP O15530
E	50	PHE	-	EXPRESSION TAG	UNP O15530
E	148	CYS	THR	ENGINEERED MUTATION	UNP O15530
F	44	GLY	-	EXPRESSION TAG	UNP O15530
F	45	ALA	-	EXPRESSION TAG	UNP O15530
F	46	MET	-	EXPRESSION TAG	UNP O15530
F	47	ASP	-	EXPRESSION TAG	UNP O15530
F	48	PRO	-	EXPRESSION TAG	UNP O15530
F	49	GLU	-	EXPRESSION TAG	UNP O15530
F	50	PHE	-	EXPRESSION TAG	UNP O15530
F	148	CYS	THR	ENGINEERED MUTATION	UNP O15530
G	44	GLY	-	EXPRESSION TAG	UNP O15530
G	45	ALA	-	EXPRESSION TAG	UNP O15530
G	46	MET	-	EXPRESSION TAG	UNP O15530
G	47	ASP	-	EXPRESSION TAG	UNP O15530
G	48	PRO	-	EXPRESSION TAG	UNP O15530
G	49	GLU	-	EXPRESSION TAG	UNP O15530
G	50	PHE	-	EXPRESSION TAG	UNP O15530

Continued on next page...

Continued from previous page...

Chain	Residue	Modelled	Actual	Comment	Reference
G	148	CYS	THR	ENGINEERED MUTATION	UNP O15530
H	44	GLY	-	EXPRESSION TAG	UNP O15530
H	45	ALA	-	EXPRESSION TAG	UNP O15530
H	46	MET	-	EXPRESSION TAG	UNP O15530
H	47	ASP	-	EXPRESSION TAG	UNP O15530
H	48	PRO	-	EXPRESSION TAG	UNP O15530
H	49	GLU	-	EXPRESSION TAG	UNP O15530
H	50	PHE	-	EXPRESSION TAG	UNP O15530
H	148	CYS	THR	ENGINEERED MUTATION	UNP O15530

- Molecule 2 is 2-METHYL-N-(2-SULFANYLETHYL)-1-BENZOFURAN-3-CARBOXAMIDE (three-letter code: 1F8) (formula: $C_{12}H_{13}NO_2S$).



Mol	Chain	Residues	Atoms					ZeroOcc	AltConf
2	A	1	Total	C	N	O	S	0	0
			16	12	1	2	1		
2	B	1	Total	C	N	O	S	0	0
			16	12	1	2	1		
2	C	1	Total	C	N	O	S	0	0
			16	12	1	2	1		
2	D	1	Total	C	N	O	S	0	0
			16	12	1	2	1		
2	E	1	Total	C	N	O	S	0	0
			16	12	1	2	1		
2	F	1	Total	C	N	O	S	0	0
			16	12	1	2	1		

Continued on next page...

Continued from previous page...

Mol	Chain	Residues	Atoms					ZeroOcc	AltConf
2	G	1	Total	C	N	O	S	0	0
			16	12	1	2	1		
2	H	1	Total	C	N	O	S	0	0
			16	12	1	2	1		

- Molecule 3 is CHLORIDE ION (three-letter code: CL) (formula: Cl).

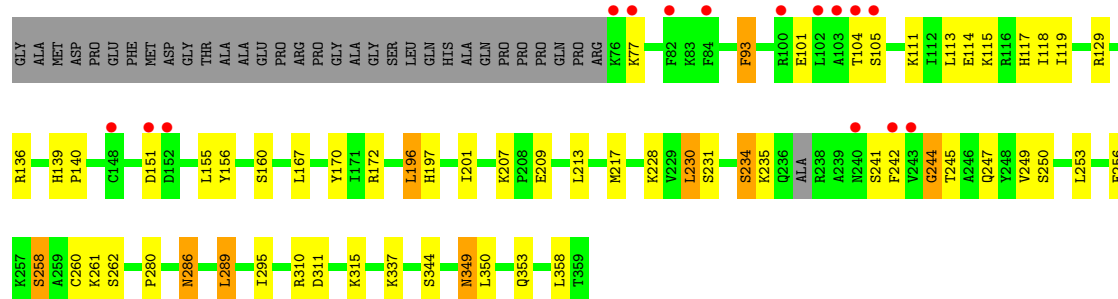
Mol	Chain	Residues	Atoms		ZeroOcc	AltConf
3	B	1	Total	Cl	0	0
			1	1		
3	A	1	Total	Cl	0	0
			1	1		
3	D	1	Total	Cl	0	0
			1	1		
3	C	1	Total	Cl	0	0
			1	1		

- Molecule 4 is water.

Mol	Chain	Residues	Atoms		ZeroOcc	AltConf
4	A	204	Total	O	0	0
			204	204		
4	B	213	Total	O	0	0
			213	213		
4	C	194	Total	O	0	0
			194	194		
4	D	187	Total	O	0	0
			187	187		
4	E	120	Total	O	0	0
			120	120		
4	F	121	Total	O	0	0
			121	121		
4	G	121	Total	O	0	0
			121	121		
4	H	134	Total	O	0	0
			134	134		

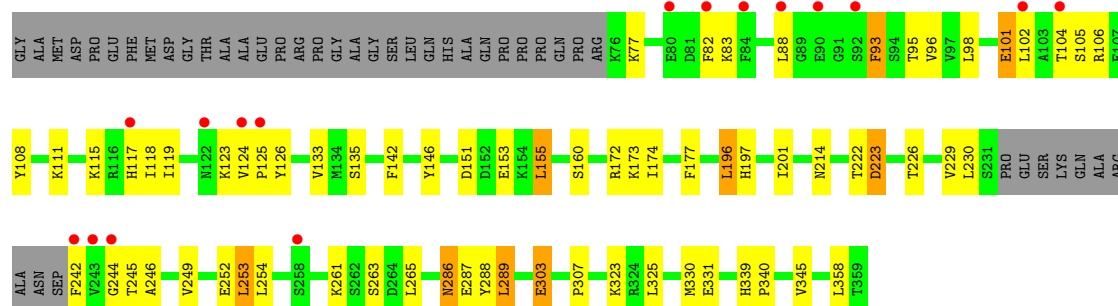
- Molecule 1: 3-phosphoinositide-dependentprotein kinase 1

Chain D:



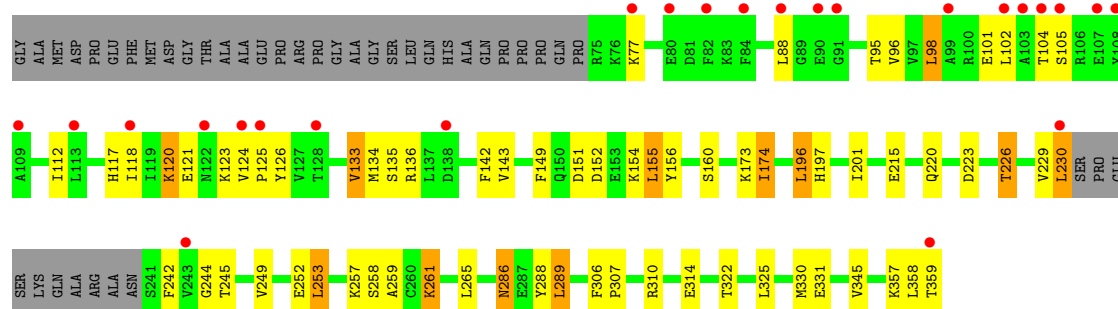
- Molecule 1: 3-phosphoinositide-dependentprotein kinase 1

Chain E:



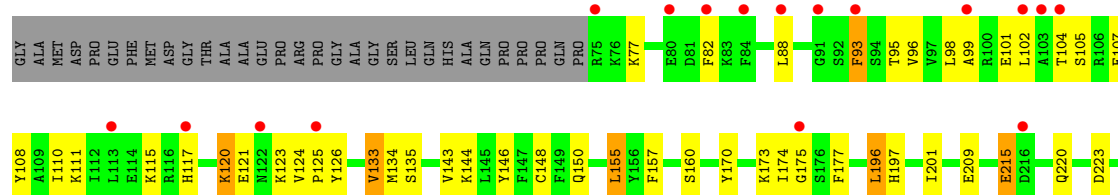
- Molecule 1: 3-phosphoinositide-dependentprotein kinase 1

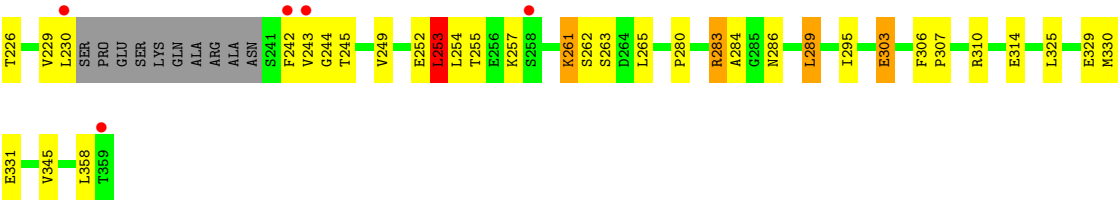
Chain F:



- Molecule 1: 3-phosphoinositide-dependentprotein kinase 1

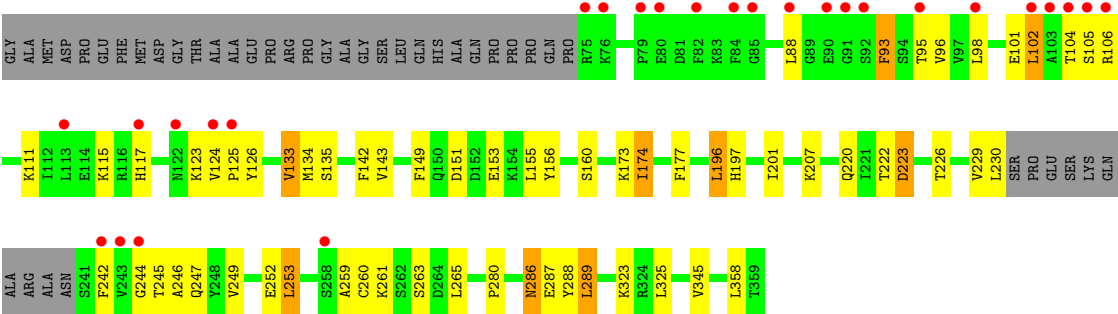
Chain G:





● Molecule 1: 3-phosphoinositide-dependentprotein kinase 1

Chain H:



4 Data and refinement statistics

Property	Value	Source
Space group	P 1	Depositor
Cell constants a, b, c, α , β , γ	40.29Å 115.87Å 145.72Å 91.76° 89.99° 95.41°	Depositor
Resolution (Å)	45.25 – 2.20 45.25 – 2.20	Depositor EDS
% Data completeness (in resolution range)	96.8 (45.25-2.20) 96.8 (45.25-2.20)	Depositor EDS
R_{merge}	0.07	Depositor
R_{sym}	0.07	Depositor
$\langle I/\sigma(I) \rangle$ ¹	2.96 (at 2.20Å)	Xtriage
Refinement program	PHENIX (phenix.refine: 2010.01.09_2330)	Depositor
R, R_{free}	0.208 , 0.243 0.203 , 0.239	Depositor DCC
R_{free} test set	6439 reflections (5.03%)	DCC
Wilson B-factor (Å ²)	29.7	Xtriage
Anisotropy	0.652	Xtriage
Bulk solvent k_{sol} (e/Å ³), B_{sol} (Å ²)	0.34 , 46.4	EDS
Estimated twinning fraction	0.073 for -h,-k,l	Xtriage
L-test for twinning	$\langle L \rangle = 0.50$, $\langle L^2 \rangle = 0.33$	Xtriage
Outliers	0 of 128104 reflections	Xtriage
F_o, F_c correlation	0.94	EDS
Total number of atoms	19043	wwPDB-VP
Average B, all atoms (Å ²)	42.0	wwPDB-VP

Xtriage's analysis on translational NCS is as follows: *The largest off-origin peak in the Patterson function is 14.30% of the height of the origin peak. No significant pseudotranslation is detected.*

¹Intensities estimated from amplitudes.

5 Model quality ⓘ

5.1 Standard geometry ⓘ

Bond lengths and bond angles in the following residue types are not validated in this section: CL, 1F8, SEP

The Z score for a bond length (or angle) is the number of standard deviations the observed value is removed from the expected value. A bond length (or angle) with $|Z| > 5$ is considered an outlier worth inspection. RMSZ is the root-mean-square of all Z scores of the bond lengths (or angles).

Mol	Chain	Bond lengths		Bond angles	
		RMSZ	# Z >5	RMSZ	# Z >5
1	A	0.61	0/2315	0.62	1/3125 (0.0%)
1	B	0.54	0/2306	0.62	0/3112
1	C	0.58	0/2308	0.61	0/3120
1	D	0.54	0/2300	0.61	2/3106 (0.1%)
1	E	0.75	0/2217	0.66	0/3003
1	F	0.69	0/2175	0.63	1/2950 (0.0%)
1	G	0.81	0/2199	0.66	2/2980 (0.1%)
1	H	0.70	0/2158	0.63	0/2932
All	All	0.66	0/17978	0.63	6/24328 (0.0%)

There are no bond length outliers.

All (6) bond angle outliers are listed below:

Mol	Chain	Res	Type	Atoms	Z	Observed(°)	Ideal(°)
1	D	136	ARG	NE-CZ-NH2	-5.70	117.45	120.30
1	D	136	ARG	NE-CZ-NH1	5.54	123.07	120.30
1	G	253	LEU	CB-CG-CD2	-5.43	101.76	111.00
1	A	283	ARG	NE-CZ-NH1	5.34	122.97	120.30
1	G	283	ARG	NE-CZ-NH1	5.05	122.83	120.30
1	F	230	LEU	CA-CB-CG	-5.01	103.78	115.30

There are no chirality outliers.

There are no planarity outliers.

5.2 Close contacts ⓘ

In the following table, the Non-H and H(model) columns list the number of non-hydrogen atoms and hydrogen atoms in the chain respectively. The H(added) column lists the number of hydrogens added by MolProbity. The Clashes column lists the number of clashes within the asymmetric unit,

and the number in parentheses is this value normalized per 1000 atoms of the molecule in the chain. The Symm-Clashes column gives symmetry related clashes, in the same way as for the Clashes column.

Mol	Chain	Non-H	H(model)	H(added)	Clashes	Symm-Clashes
1	A	2271	0	2250	52	0
1	B	2262	0	2245	53	0
1	C	2264	0	2217	54	0
1	D	2256	0	2233	43	0
1	E	2163	0	2101	62	0
1	F	2132	0	2040	56	0
1	G	2155	0	2069	68	0
1	H	2114	0	1982	56	0
2	A	16	0	12	3	0
2	B	16	0	12	3	0
2	C	16	0	12	3	0
2	D	16	0	12	3	0
2	E	16	0	12	2	0
2	F	16	0	12	2	0
2	G	16	0	12	3	0
2	H	16	0	12	2	0
3	A	1	0	0	0	0
3	B	1	0	0	0	0
3	C	1	0	0	0	0
3	D	1	0	0	0	0
4	A	204	0	0	4	0
4	B	213	0	0	9	0
4	C	194	0	0	11	0
4	D	187	0	0	5	0
4	E	120	0	0	1	0
4	F	121	0	0	3	0
4	G	121	0	0	2	0
4	H	134	0	0	3	0
All	All	19043	0	17233	425	0

Clashscore is defined as the number of clashes calculated for the entry per 1000 atoms (including hydrogens) of the entry. The overall clashscore for this entry is 12.

All (425) close contacts within the same asymmetric unit are listed below.

Atom-1	Atom-2	Distance(Å)	Clash(Å)
1:A:230:LEU:HD21	1:A:235:LYS:HA	1.28	1.12
1:A:323:LYS:NZ	1:G:310:ARG:HH21	1.47	1.10
1:F:253:LEU:N	1:F:253:LEU:HD23	1.69	1.04
1:E:253:LEU:HD23	1:E:253:LEU:N	1.74	1.01

Continued on next page...

Continued from previous page...

Atom-1	Atom-2	Distance(Å)	Clash(Å)
1:G:253:LEU:HD23	1:G:253:LEU:N	1.72	0.99
1:B:253:LEU:HD23	1:B:258:SER:O	1.66	0.96
1:A:253:LEU:HD23	1:A:258:SER:O	1.67	0.95
1:B:310:ARG:HH21	1:E:323:LYS:HE2	1.31	0.95
1:E:253:LEU:CD2	1:E:253:LEU:N	2.30	0.94
1:C:253:LEU:HD23	1:C:258:SER:O	1.68	0.94
1:C:323:LYS:NZ	1:F:310:ARG:HH21	1.64	0.94
1:A:323:LYS:HZ1	1:G:310:ARG:NH2	1.65	0.94
1:D:253:LEU:HD23	1:D:258:SER:O	1.67	0.94
1:G:253:LEU:CD2	1:G:253:LEU:N	2.30	0.93
1:F:253:LEU:HD23	1:F:253:LEU:H	1.32	0.93
1:F:253:LEU:N	1:F:253:LEU:CD2	2.30	0.92
1:F:230:LEU:C	1:F:230:LEU:HD12	1.91	0.91
1:G:253:LEU:HD23	1:G:253:LEU:H	1.36	0.89
1:A:230:LEU:HD21	1:A:235:LYS:CA	2.03	0.87
1:C:323:LYS:HZ1	1:F:310:ARG:HH21	1.16	0.87
1:D:310:ARG:HH21	1:H:323:LYS:HE2	1.41	0.84
1:F:229:VAL:HG12	1:F:230:LEU:HG	1.59	0.83
1:G:252:GLU:HG2	1:G:253:LEU:HD23	1.61	0.82
1:A:323:LYS:HZ1	1:G:310:ARG:HH21	0.83	0.82
1:H:104:THR:CB	1:H:106:ARG:HD3	2.11	0.81
1:B:151:ASP:HB2	1:B:156:TYR:HE1	1.46	0.80
1:B:310:ARG:NH2	1:E:323:LYS:HE2	1.96	0.80
1:D:151:ASP:HB2	1:D:156:TYR:HE1	1.47	0.80
1:C:151:ASP:HB2	1:C:156:TYR:HE1	1.47	0.79
1:H:101:GLU:OE1	1:H:104:THR:CB	2.30	0.79
1:A:151:ASP:HB2	1:A:156:TYR:HE1	1.47	0.79
1:F:226:THR:HG23	4:F:895:HOH:O	1.82	0.79
1:C:236:GLN:HA	1:C:236:GLN:HE21	1.48	0.79
1:G:104:THR:O	1:G:105:SER:CB	2.31	0.78
1:E:253:LEU:HD23	1:E:253:LEU:H	1.48	0.78
1:H:174:ILE:HD11	1:H:177:PHE:CD1	2.19	0.78
1:B:155:LEU:HD22	2:B:1:1F8:H28	1.65	0.77
1:E:101:GLU:HG2	1:E:104:THR:OG1	1.86	0.76
1:A:155:LEU:HD22	2:A:1:1F8:H28	1.67	0.76
1:D:155:LEU:HD22	2:D:1:1F8:H28	1.67	0.76
1:C:155:LEU:HD22	2:C:1:1F8:H28	1.67	0.75
1:G:144:LYS:HD2	4:G:564:HOH:O	1.86	0.75
1:E:104:THR:O	1:E:105:SER:CB	2.31	0.74
1:F:136:ARG:HD3	4:F:1418:HOH:O	1.87	0.74
1:G:245:THR:O	1:G:249:VAL:HG23	1.87	0.73
1:H:245:THR:O	1:H:249:VAL:HG23	1.89	0.72

Continued on next page...

Continued from previous page...

Atom-1	Atom-2	Distance(Å)	Clash(Å)
1:G:99:ALA:HB2	1:G:110:ILE:HG13	1.72	0.72
1:C:344:SER:HB3	1:G:307:PRO:HG2	1.71	0.72
1:A:323:LYS:NZ	1:G:310:ARG:NH2	2.29	0.71
1:C:155:LEU:HD22	2:C:1:1F8:C28	2.21	0.71
1:G:155:LEU:HD11	2:G:1:1F8:C28	2.20	0.71
1:E:252:GLU:HG2	1:E:253:LEU:HD23	1.72	0.71
1:A:155:LEU:HD22	2:A:1:1F8:C28	2.21	0.70
1:H:102:LEU:N	1:H:102:LEU:HD23	2.06	0.70
1:B:207:LYS:HE3	1:B:209:GLU:HG2	1.73	0.70
1:B:155:LEU:HD22	2:B:1:1F8:C28	2.21	0.70
1:F:252:GLU:HB2	1:F:258:SER:HB3	1.74	0.70
1:D:93:PHE:HB2	4:D:1364:HOH:O	1.91	0.70
1:D:207:LYS:HE3	1:D:209:GLU:HG2	1.74	0.69
1:C:349:ASN:ND2	1:C:353:GLN:HE21	1.91	0.69
1:D:286:ASN:ND2	1:D:289:LEU:H	1.91	0.69
1:D:155:LEU:HD22	2:D:1:1F8:C28	2.22	0.69
1:A:349:ASN:ND2	1:A:353:GLN:HE21	1.91	0.69
1:G:155:LEU:HD11	2:G:1:1F8:H28	1.75	0.69
1:A:286:ASN:ND2	1:A:289:LEU:H	1.90	0.69
1:E:155:LEU:HD11	2:E:1:1F8:H28	1.75	0.68
1:E:151:ASP:OD1	1:E:151:ASP:C	2.30	0.68
1:E:115:LYS:O	1:E:119:ILE:HG12	1.93	0.68
1:F:245:THR:O	1:F:249:VAL:HG23	1.94	0.68
1:C:311:ASP:OD2	1:C:315:LYS:HE2	1.93	0.68
1:F:197:HIS:HB3	1:F:261:LYS:HD2	1.74	0.68
1:G:229:VAL:HG12	1:G:230:LEU:N	2.09	0.67
1:H:151:ASP:OD1	1:H:153:GLU:HG2	1.94	0.67
1:G:174:ILE:HD11	1:G:177:PHE:CD1	2.30	0.67
1:A:249:VAL:HG13	1:A:253:LEU:HD12	1.75	0.67
1:C:283:ARG:HG2	4:C:1371:HOH:O	1.94	0.67
1:B:311:ASP:OD2	1:B:315:LYS:HE2	1.94	0.67
1:F:252:GLU:HG2	1:F:253:LEU:HD23	1.77	0.67
1:B:286:ASN:ND2	1:B:289:LEU:H	1.93	0.66
1:D:310:ARG:NH2	1:H:323:LYS:HE2	2.11	0.66
1:A:207:LYS:HE3	1:A:209:GLU:HG2	1.78	0.66
1:A:311:ASP:OD2	1:A:315:LYS:HE2	1.95	0.66
1:G:252:GLU:HG2	1:G:253:LEU:CD2	2.25	0.66
1:C:286:ASN:ND2	1:C:289:LEU:H	1.93	0.66
1:D:349:ASN:ND2	1:D:353:GLN:HE21	1.93	0.66
1:H:151:ASP:OD1	1:H:151:ASP:C	2.33	0.66
1:A:280:PRO:O	1:A:283:ARG:HD3	1.96	0.65
1:B:349:ASN:ND2	1:B:353:GLN:HE21	1.94	0.65

Continued on next page...

Continued from previous page...

Atom-1	Atom-2	Distance(Å)	Clash(Å)
1:D:311:ASP:OD2	1:D:315:LYS:HE2	1.96	0.65
1:D:245:THR:O	1:D:249:VAL:HG23	1.95	0.65
1:C:230:LEU:HD21	1:C:235:LYS:HA	1.79	0.65
1:C:249:VAL:HG13	1:C:253:LEU:HD12	1.77	0.65
1:C:286:ASN:C	1:C:286:ASN:HD22	2.00	0.65
1:F:229:VAL:HG12	1:F:230:LEU:N	2.11	0.65
1:G:280:PRO:O	1:G:283:ARG:NH1	2.30	0.65
1:C:245:THR:O	1:C:249:VAL:HG23	1.96	0.65
1:G:170:TYR:O	1:G:174:ILE:HG12	1.97	0.65
1:F:151:ASP:C	1:F:151:ASP:OD1	2.33	0.64
1:C:207:LYS:HE3	1:C:209:GLU:HG2	1.80	0.64
1:C:196:LEU:HD22	1:C:201:ILE:HB	1.79	0.64
1:C:323:LYS:NZ	1:F:310:ARG:NH2	2.43	0.64
1:G:124:VAL:N	1:G:125:PRO:HD2	2.13	0.64
1:E:229:VAL:HG12	1:E:230:LEU:N	2.12	0.64
1:A:196:LEU:HD22	1:A:201:ILE:HB	1.79	0.64
1:D:249:VAL:HG13	1:D:253:LEU:HD12	1.78	0.64
1:H:253:LEU:N	1:H:253:LEU:HD23	2.12	0.63
1:H:96:VAL:CG2	1:H:111:LYS:HD2	2.28	0.63
1:E:104:THR:CB	1:E:106:ARG:HD2	2.29	0.63
1:H:253:LEU:CD2	1:H:253:LEU:N	2.61	0.63
1:G:197:HIS:HB3	1:G:261:LYS:HD2	1.79	0.63
1:G:196:LEU:HD22	1:G:201:ILE:HB	1.81	0.63
1:H:229:VAL:HG12	1:H:230:LEU:N	2.12	0.63
1:H:196:LEU:HD22	1:H:201:ILE:HB	1.81	0.63
1:G:229:VAL:HG12	1:G:230:LEU:H	1.63	0.63
1:B:196:LEU:HD22	1:B:201:ILE:HB	1.80	0.63
1:B:115:LYS:O	1:B:119:ILE:HG12	1.99	0.62
1:E:96:VAL:CG2	1:E:111:LYS:HD2	2.29	0.62
1:G:96:VAL:CG2	1:G:111:LYS:HD2	2.29	0.62
1:F:124:VAL:N	1:F:125:PRO:HD2	2.14	0.62
1:D:196:LEU:HD22	1:D:201:ILE:HB	1.81	0.62
1:A:115:LYS:O	1:A:119:ILE:HG12	1.99	0.62
1:A:245:THR:O	1:A:249:VAL:HG23	1.99	0.62
1:A:351:HIS:HB2	4:A:1005:HOH:O	1.99	0.62
1:A:350:LEU:HD22	4:A:651:HOH:O	2.00	0.61
1:C:323:LYS:HZ1	1:F:310:ARG:NH2	1.94	0.61
1:A:286:ASN:HD22	1:A:286:ASN:C	2.04	0.61
1:E:229:VAL:HG12	1:E:230:LEU:H	1.65	0.61
1:E:124:VAL:N	1:E:125:PRO:HD2	2.14	0.61
1:E:196:LEU:HD22	1:E:201:ILE:HB	1.83	0.61
1:E:174:ILE:HD11	1:E:177:PHE:CD1	2.35	0.61

Continued on next page...

Continued from previous page...

Atom-1	Atom-2	Distance(Å)	Clash(Å)
1:B:249:VAL:HG13	1:B:253:LEU:HD12	1.81	0.61
1:E:151:ASP:OD1	1:E:153:GLU:HG2	2.00	0.61
1:F:196:LEU:HD22	1:F:201:ILE:HB	1.83	0.60
1:H:124:VAL:N	1:H:125:PRO:HD2	2.15	0.60
1:D:115:LYS:O	1:D:119:ILE:HG12	2.01	0.60
1:C:115:LYS:O	1:C:119:ILE:HG12	2.00	0.60
1:G:99:ALA:CB	1:G:110:ILE:HG13	2.31	0.60
1:B:245:THR:O	1:B:249:VAL:HG23	2.00	0.60
1:B:286:ASN:HD22	1:B:286:ASN:C	2.05	0.60
1:G:93:PHE:N	1:G:93:PHE:CD1	2.62	0.60
1:H:229:VAL:HG12	1:H:230:LEU:H	1.66	0.60
1:C:252:GLU:HG3	4:C:683:HOH:O	2.01	0.60
1:F:120:LYS:HG3	1:F:121:GLU:N	2.16	0.60
1:E:246:ALA:HB3	1:E:287:GLU:OE1	2.03	0.59
1:E:245:THR:O	1:E:249:VAL:HG23	2.02	0.59
1:B:242:PHE:CZ	1:B:244:GLY:HA2	2.38	0.59
1:D:242:PHE:CZ	1:D:244:GLY:HA2	2.38	0.59
1:E:93:PHE:CD1	1:E:93:PHE:N	2.63	0.59
1:F:229:VAL:HG12	1:F:230:LEU:H	1.68	0.58
1:C:242:PHE:CZ	1:C:244:GLY:HA2	2.37	0.58
1:H:93:PHE:CD1	1:H:93:PHE:N	2.64	0.58
1:E:155:LEU:HD11	2:E:1:1F8:C28	2.34	0.58
1:D:280:PRO:HB2	4:D:39:HOH:O	2.04	0.57
1:D:104:THR:O	1:D:105:SER:HB2	2.04	0.57
1:E:118:ILE:HG22	1:E:124:VAL:HG23	1.86	0.57
1:B:138:ASP:HB3	4:B:1402:HOH:O	2.05	0.57
1:A:242:PHE:CZ	1:A:244:GLY:HA2	2.39	0.57
1:C:170:TYR:CE2	1:C:213:LEU:HD12	2.39	0.57
1:B:280:PRO:HB2	4:B:11:HOH:O	2.05	0.57
1:H:246:ALA:HB3	1:H:287:GLU:OE1	2.05	0.57
1:A:323:LYS:NZ	1:G:314:GLU:OE2	2.38	0.57
1:E:245:THR:HG22	4:E:1094:HOH:O	2.04	0.57
1:D:286:ASN:HD22	1:D:286:ASN:C	2.09	0.56
1:F:230:LEU:CD1	1:F:230:LEU:C	2.60	0.56
1:H:155:LEU:HD11	2:H:1:1F8:H28	1.86	0.56
1:H:102:LEU:H	1:H:102:LEU:CD2	2.18	0.56
1:F:118:ILE:HG22	1:F:124:VAL:HG23	1.87	0.56
1:H:93:PHE:HD1	1:H:93:PHE:H	1.53	0.56
1:H:259:ALA:O	1:H:260:CYS:HB3	2.05	0.56
1:D:231:SER:H	1:D:234:SER:HB2	1.70	0.56
1:E:104:THR:HB	1:E:106:ARG:HD2	1.88	0.56
1:B:104:THR:O	1:B:105:SER:HB2	2.06	0.56

Continued on next page...

Continued from previous page...

Atom-1	Atom-2	Distance(Å)	Clash(Å)
1:A:104:THR:O	1:A:105:SER:HB2	2.06	0.55
1:G:242:PHE:CZ	1:G:244:GLY:HA2	2.41	0.55
1:D:337:LYS:HE2	4:D:1315:HOH:O	2.06	0.55
1:D:344:SER:HB3	1:E:307:PRO:HG2	1.87	0.55
1:B:337:LYS:HE2	4:B:1323:HOH:O	2.07	0.55
1:F:286:ASN:ND2	1:F:289:LEU:H	2.05	0.55
1:E:104:THR:OG1	1:E:106:ARG:HD2	2.06	0.55
1:C:280:PRO:HB2	4:C:23:HOH:O	2.06	0.55
1:F:104:THR:O	1:F:105:SER:CB	2.55	0.55
1:D:113:LEU:HB3	1:D:118:ILE:HD11	1.90	0.54
1:H:286:ASN:HD22	1:H:288:TYR:H	1.53	0.54
1:B:121:GLU:HB2	1:B:123:LYS:HE2	1.88	0.54
1:G:148:CYS:SG	1:G:157:PHE:CE1	3.00	0.54
1:C:344:SER:HB3	1:G:307:PRO:CG	2.37	0.54
1:H:252:GLU:HG2	1:H:253:LEU:HD23	1.90	0.54
1:B:230:LEU:HD21	1:B:235:LYS:HA	1.89	0.54
1:H:286:ASN:HD22	1:H:288:TYR:N	2.06	0.54
1:F:98:LEU:HG	1:F:98:LEU:O	2.07	0.54
1:D:350:LEU:HD22	4:D:553:HOH:O	2.08	0.53
1:B:350:LEU:HD22	4:B:979:HOH:O	2.08	0.53
1:B:113:LEU:HB3	1:B:118:ILE:HD11	1.91	0.53
1:D:170:TYR:CE2	1:D:213:LEU:HD12	2.43	0.53
1:E:286:ASN:ND2	1:E:289:LEU:H	2.06	0.53
1:B:155:LEU:CD2	2:B:1:1F8:H28	2.36	0.53
1:A:113:LEU:HB3	1:A:118:ILE:HD11	1.91	0.53
1:C:155:LEU:CD2	2:C:1:1F8:H28	2.35	0.53
1:C:104:THR:O	1:C:105:SER:HB2	2.07	0.53
1:A:349:ASN:HD21	1:A:353:GLN:HE21	1.56	0.53
1:G:243:VAL:O	1:G:243:VAL:HG12	2.08	0.53
1:C:113:LEU:HB3	1:C:118:ILE:HD11	1.91	0.53
1:A:155:LEU:CD2	2:A:1:1F8:H28	2.36	0.53
1:B:260:CYS:HB3	4:B:874:HOH:O	2.08	0.53
1:E:101:GLU:CG	1:E:104:THR:OG1	2.57	0.52
1:H:88:LEU:HD12	1:H:96:VAL:HG12	1.89	0.52
1:D:230:LEU:HD21	1:D:235:LYS:HA	1.91	0.52
1:C:93:PHE:HB2	4:C:1210:HOH:O	2.09	0.52
1:H:247:GLN:NE2	4:H:387:HOH:O	2.42	0.52
1:D:114:GLU:OE2	1:D:117:HIS:HB2	2.08	0.52
1:H:286:ASN:ND2	1:H:289:LEU:H	2.07	0.52
1:C:349:ASN:HD21	1:C:353:GLN:HE21	1.57	0.52
1:G:120:LYS:CG	1:G:121:GLU:N	2.73	0.52
1:F:265:LEU:HD13	1:F:325:LEU:O	2.10	0.52

Continued on next page...

Continued from previous page...

Atom-1	Atom-2	Distance(Å)	Clash(Å)
1:G:120:LYS:HG3	1:G:121:GLU:N	2.23	0.52
1:A:75:ARG:HG2	1:A:76:LYS:N	2.25	0.52
1:F:88:LEU:HD12	1:F:96:VAL:HG12	1.90	0.52
1:D:155:LEU:CD2	2:D:1:1F8:H28	2.38	0.51
1:A:170:TYR:CE2	1:A:213:LEU:HD12	2.44	0.51
1:H:102:LEU:H	1:H:102:LEU:HD23	1.71	0.51
1:E:88:LEU:HD12	1:E:96:VAL:HG12	1.90	0.51
1:B:170:TYR:CE2	1:B:213:LEU:HD12	2.45	0.51
1:H:123:LYS:O	1:H:126:TYR:HB3	2.10	0.51
1:C:172:ARG:HD2	4:C:813:HOH:O	2.11	0.51
1:F:123:LYS:O	1:F:126:TYR:HB3	2.11	0.51
1:C:230:LEU:HD21	1:C:235:LYS:CA	2.41	0.51
1:G:88:LEU:HD12	1:G:96:VAL:HG12	1.91	0.50
1:C:242:PHE:CE1	1:C:244:GLY:HA2	2.46	0.50
1:B:242:PHE:CE1	1:B:244:GLY:HA2	2.46	0.50
1:H:174:ILE:HD11	1:H:177:PHE:CE1	2.47	0.50
1:F:252:GLU:HG2	1:F:253:LEU:CD2	2.41	0.50
1:G:99:ALA:CB	1:G:110:ILE:CG1	2.90	0.50
1:D:230:LEU:HD23	1:D:234:SER:HB3	1.93	0.50
1:D:111:LYS:HE2	1:D:113:LEU:HD21	1.93	0.50
1:A:250:SER:OG	1:A:253:LEU:HG	2.12	0.49
1:D:242:PHE:CE1	1:D:244:GLY:HA2	2.47	0.49
1:G:93:PHE:HD1	1:G:93:PHE:N	2.09	0.49
1:C:129:ARG:NH2	1:C:241:SEP:O3P	2.45	0.49
1:A:234:SER:O	1:A:235:LYS:C	2.49	0.49
1:E:123:LYS:O	1:E:126:TYR:HB3	2.12	0.49
1:G:123:LYS:O	1:G:126:TYR:HB3	2.13	0.49
1:E:101:GLU:CG	1:E:101:GLU:O	2.60	0.49
1:C:260:CYS:SG	4:C:683:HOH:O	2.60	0.49
1:H:155:LEU:HD11	2:H:1:1F8:C28	2.42	0.49
1:C:217:MET:HG3	4:C:597:HOH:O	2.12	0.49
1:C:250:SER:OG	1:C:253:LEU:HG	2.13	0.49
1:B:359:THR:HG22	4:B:473:HOH:O	2.11	0.49
1:B:250:SER:OG	1:B:253:LEU:HG	2.13	0.49
1:D:286:ASN:HD22	1:D:289:LEU:H	1.60	0.49
1:A:242:PHE:CE1	1:A:244:GLY:HA2	2.48	0.49
1:D:114:GLU:O	1:D:114:GLU:HG3	2.10	0.49
1:G:209:GLU:HG3	4:G:833:HOH:O	2.12	0.49
1:C:329:GLU:HA	4:C:1200:HOH:O	2.14	0.48
1:H:115:LYS:NZ	1:H:151:ASP:O	2.42	0.48
1:E:286:ASN:HD22	1:E:288:TYR:N	2.11	0.48
1:B:111:LYS:HE2	1:B:113:LEU:HD21	1.95	0.48

Continued on next page...

Continued from previous page...

Atom-1	Atom-2	Distance(Å)	Clash(Å)
1:G:229:VAL:CG1	1:G:230:LEU:N	2.77	0.48
1:G:115:LYS:NZ	1:G:150:GLN:OE1	2.32	0.48
1:G:93:PHE:HD1	1:G:93:PHE:H	1.50	0.48
1:E:77:LYS:HD3	1:E:82:PHE:CZ	2.49	0.48
1:A:111:LYS:HE2	1:A:113:LEU:HD21	1.95	0.48
1:H:222:THR:OG1	1:H:223:ASP:N	2.45	0.48
1:C:111:LYS:HE2	1:C:113:LEU:HD21	1.96	0.47
1:G:174:ILE:HG13	1:G:175:GLY:N	2.28	0.47
1:B:129:ARG:HD2	4:B:1239:HOH:O	2.15	0.47
1:E:93:PHE:N	1:E:93:PHE:HD1	2.10	0.47
1:B:197:HIS:CG	1:B:261:LYS:HG2	2.49	0.47
1:G:108:TYR:HE1	1:G:146:TYR:CD2	2.32	0.47
1:A:129:ARG:NH2	1:A:241:SEP:O3P	2.44	0.47
1:E:197:HIS:HB3	1:E:261:LYS:HD2	1.96	0.47
1:H:104:THR:O	1:H:105:SER:CB	2.63	0.47
1:D:250:SER:OG	1:D:253:LEU:HG	2.15	0.47
1:F:286:ASN:HD22	1:F:288:TYR:N	2.13	0.47
1:B:129:ARG:NH2	1:B:241:SEP:O3P	2.45	0.47
1:B:233:GLU:HA	1:B:233:GLU:OE2	2.14	0.47
1:B:286:ASN:HD22	1:B:289:LEU:H	1.62	0.47
1:G:77:LYS:HD3	1:G:82:PHE:CZ	2.50	0.46
1:E:303:GLU:HG3	1:E:303:GLU:H	1.45	0.46
1:B:310:ARG:HE	1:E:323:LYS:HE3	1.80	0.46
1:H:93:PHE:HD1	1:H:93:PHE:N	2.11	0.46
1:B:247:GLN:HE21	1:B:280:PRO:HG2	1.80	0.46
1:E:265:LEU:HD13	1:E:325:LEU:O	2.16	0.46
1:G:155:LEU:CD1	2:G:1:1F8:C28	2.92	0.46
1:H:88:LEU:HD12	1:H:96:VAL:CG1	2.45	0.46
1:E:174:ILE:HD11	1:E:177:PHE:CE1	2.50	0.46
1:B:144:LYS:HD3	4:B:634:HOH:O	2.15	0.46
1:H:242:PHE:CZ	1:H:244:GLY:HA2	2.51	0.46
1:F:229:VAL:CG1	1:F:230:LEU:N	2.79	0.46
1:B:207:LYS:HE3	1:B:209:GLU:CG	2.45	0.46
1:E:330:MET:C	1:E:331:GLU:HG2	2.36	0.46
1:H:265:LEU:HD13	1:H:325:LEU:O	2.16	0.46
1:B:260:CYS:SG	1:B:262:SER:HB3	2.56	0.46
1:F:88:LEU:HD12	1:F:96:VAL:CG1	2.46	0.46
1:E:93:PHE:H	1:E:93:PHE:HD1	1.52	0.46
1:F:306:PHE:HA	1:F:307:PRO:HD3	1.85	0.46
1:E:286:ASN:C	1:E:286:ASN:HD22	2.20	0.45
1:F:174:ILE:HB	1:F:359:THR:OXT	2.16	0.45
1:G:253:LEU:HD22	1:G:253:LEU:N	2.21	0.45

Continued on next page...

Continued from previous page...

Atom-1	Atom-2	Distance(Å)	Clash(Å)
1:C:284:ALA:HB1	1:C:289:LEU:HB3	1.98	0.45
1:G:284:ALA:HB1	1:G:289:LEU:HB3	1.98	0.45
1:G:197:HIS:CB	1:G:261:LYS:HD2	2.46	0.45
1:F:155:LEU:HD11	2:F:1:1F8:H28	1.98	0.45
1:G:330:MET:C	1:G:331:GLU:HG2	2.37	0.45
1:E:83:LYS:HB2	1:E:102:LEU:HD21	1.97	0.45
1:E:108:TYR:HE1	1:E:146:TYR:CD2	2.35	0.45
1:D:129:ARG:NH2	1:D:241:SEP:O3P	2.47	0.45
1:E:214:ASN:OD1	1:E:214:ASN:C	2.55	0.45
1:C:323:LYS:NZ	1:F:314:GLU:OE2	2.50	0.45
1:F:149:PHE:CE1	1:F:156:TYR:CD1	3.04	0.45
1:B:135:SER:HA	4:B:1348:HOH:O	2.15	0.45
1:A:231:SER:OG	1:A:234:SER:HB2	2.17	0.45
1:G:229:VAL:CG1	1:G:230:LEU:H	2.29	0.45
1:E:88:LEU:HD12	1:E:96:VAL:CG1	2.46	0.45
1:F:286:ASN:HD22	1:F:286:ASN:C	2.20	0.45
1:F:242:PHE:CZ	1:F:244:GLY:HA2	2.52	0.45
1:A:230:LEU:HD23	1:A:231:SER:N	2.32	0.45
1:H:143:VAL:HG23	1:H:220:GLN:HG2	1.99	0.45
1:E:286:ASN:HD22	1:E:288:TYR:H	1.64	0.45
1:A:323:LYS:CE	1:G:310:ARG:NH2	2.79	0.44
1:B:349:ASN:HD21	1:B:353:GLN:HE21	1.61	0.44
1:H:207:LYS:NZ	4:H:945:HOH:O	2.51	0.44
1:D:197:HIS:CG	1:D:261:LYS:HG2	2.52	0.44
1:F:112:ILE:HA	1:F:155:LEU:O	2.17	0.44
1:A:197:HIS:CG	1:A:261:LYS:HG2	2.52	0.44
1:A:280:PRO:HB2	4:A:369:HOH:O	2.16	0.44
1:G:88:LEU:HD12	1:G:96:VAL:CG1	2.47	0.44
1:E:196:LEU:HA	1:E:196:LEU:HD23	1.85	0.44
1:F:120:LYS:CG	1:F:121:GLU:N	2.81	0.44
1:G:102:LEU:HD23	1:G:102:LEU:HA	1.48	0.44
1:G:253:LEU:HD22	1:G:253:LEU:HA	1.66	0.44
1:F:102:LEU:N	1:F:102:LEU:HD23	2.33	0.44
1:B:253:LEU:CD2	1:B:258:SER:O	2.52	0.44
1:E:124:VAL:N	1:E:125:PRO:CD	2.81	0.44
1:E:253:LEU:HD22	1:E:253:LEU:HA	1.43	0.43
1:H:229:VAL:CG1	1:H:230:LEU:N	2.80	0.43
1:H:196:LEU:HA	1:H:196:LEU:HD23	1.86	0.43
1:A:249:VAL:CG1	1:A:253:LEU:HD12	2.48	0.43
1:H:142:PHE:CZ	1:H:196:LEU:HG	2.53	0.43
1:D:217:MET:HG3	4:D:521:HOH:O	2.18	0.43
1:E:252:GLU:HG2	1:E:253:LEU:CD2	2.44	0.43

Continued on next page...

Continued from previous page...

Atom-1	Atom-2	Distance(Å)	Clash(Å)
1:G:124:VAL:N	1:G:125:PRO:CD	2.80	0.43
1:H:96:VAL:HG22	1:H:111:LYS:HD2	2.01	0.43
1:G:252:GLU:OE1	1:G:263:SER:HB3	2.18	0.43
1:C:197:HIS:CG	1:C:261:LYS:HG2	2.53	0.43
1:A:139:HIS:CG	1:A:140:PRO:HD2	2.54	0.43
1:A:247:GLN:HE21	1:A:280:PRO:HG2	1.84	0.43
1:H:197:HIS:CG	1:H:261:LYS:HD2	2.54	0.43
1:E:222:THR:OG1	1:E:223:ASP:N	2.52	0.43
1:F:258:SER:OG	1:F:259:ALA:N	2.51	0.43
1:H:88:LEU:HD21	1:H:98:LEU:HB2	2.00	0.43
1:G:196:LEU:HA	1:G:196:LEU:HD23	1.88	0.43
1:H:149:PHE:CE1	1:H:156:TYR:CG	3.07	0.43
1:D:253:LEU:CD2	1:D:258:SER:O	2.55	0.43
1:G:306:PHE:HA	1:G:307:PRO:HD3	1.86	0.43
1:H:124:VAL:N	1:H:125:PRO:CD	2.82	0.43
1:F:143:VAL:HG23	1:F:220:GLN:HG2	2.00	0.43
1:H:253:LEU:HA	1:H:253:LEU:HD22	1.59	0.42
1:G:265:LEU:HD13	1:G:325:LEU:O	2.19	0.42
1:D:139:HIS:CG	1:D:140:PRO:HD2	2.54	0.42
1:C:139:HIS:CG	1:C:140:PRO:HD2	2.54	0.42
1:D:260:CYS:SG	1:D:262:SER:HB3	2.60	0.42
1:A:139:HIS:ND1	1:A:140:PRO:HD2	2.34	0.42
1:G:303:GLU:H	1:G:303:GLU:HG3	1.43	0.42
1:G:101:GLU:HG2	1:G:104:THR:H	1.83	0.42
1:F:142:PHE:CZ	1:F:196:LEU:HG	2.54	0.42
1:H:197:HIS:HB3	1:H:261:LYS:HD2	2.01	0.42
1:G:143:VAL:HG22	1:G:220:GLN:HE21	1.84	0.42
1:C:236:GLN:CA	1:C:236:GLN:HE21	2.17	0.42
1:H:259:ALA:O	1:H:260:CYS:CB	2.62	0.42
1:H:286:ASN:C	1:H:286:ASN:HD22	2.23	0.42
1:C:77:LYS:HE3	1:C:101:GLU:OE2	2.20	0.42
1:B:231:SER:H	1:B:234:SER:HB2	1.85	0.42
1:F:253:LEU:HD22	1:F:253:LEU:HA	1.62	0.42
1:C:249:VAL:CG1	1:C:253:LEU:HD12	2.49	0.42
1:C:284:ALA:CB	1:C:289:LEU:HB3	2.50	0.42
1:B:280:PRO:O	1:B:283:ARG:HD3	2.19	0.42
1:A:185:TYR:O	1:A:189:ILE:HG13	2.19	0.42
1:C:248:TYR:HB2	4:C:759:HOH:O	2.20	0.42
1:C:358:LEU:HD12	1:C:358:LEU:HA	1.87	0.42
1:A:253:LEU:CD2	1:A:258:SER:O	2.55	0.42
1:E:142:PHE:CZ	1:E:196:LEU:HG	2.55	0.42
1:C:172:ARG:HD2	4:C:400:HOH:O	2.20	0.42

Continued on next page...

Continued from previous page...

Atom-1	Atom-2	Distance(Å)	Clash(Å)
1:H:133:VAL:CG1	1:H:134:MET:N	2.83	0.42
1:E:88:LEU:HD21	1:E:98:LEU:HB2	2.02	0.42
1:F:124:VAL:N	1:F:125:PRO:CD	2.81	0.42
1:A:230:LEU:HD23	1:A:231:SER:H	1.85	0.41
1:A:207:LYS:HE3	1:A:209:GLU:CG	2.48	0.41
1:E:96:VAL:HG22	1:E:111:LYS:HD2	2.02	0.41
1:G:255:THR:C	1:G:257:LYS:H	2.21	0.41
1:B:284:ALA:HB1	1:B:289:LEU:HB3	2.02	0.41
1:D:349:ASN:HD21	1:D:353:GLN:HE21	1.64	0.41
1:B:115:LYS:NZ	1:B:150:GLN:HG2	2.34	0.41
1:G:98:LEU:HD11	1:G:107:GLU:HB3	2.02	0.41
1:G:215:GLU:HG3	1:G:215:GLU:H	1.51	0.41
1:G:254:LEU:HD12	1:G:295:ILE:CD1	2.50	0.41
1:E:229:VAL:CG1	1:E:230:LEU:N	2.79	0.41
1:F:155:LEU:HD11	2:F:1:1F8:C28	2.51	0.41
1:B:139:HIS:CG	1:B:140:PRO:HD2	2.56	0.41
1:D:77:LYS:HE3	1:D:101:GLU:OE2	2.20	0.41
1:C:343:GLU:HG3	4:C:963:HOH:O	2.20	0.41
1:F:322:THR:HA	4:F:601:HOH:O	2.20	0.41
1:E:339:HIS:CG	1:E:340:PRO:HD2	2.55	0.41
1:F:288:TYR:HD2	1:F:289:LEU:HD13	1.86	0.41
1:F:330:MET:C	1:F:331:GLU:HG2	2.41	0.41
1:A:115:LYS:NZ	1:A:150:GLN:HG2	2.35	0.41
1:C:115:LYS:NZ	1:C:150:GLN:HG2	2.35	0.41
1:C:247:GLN:HE21	1:C:280:PRO:HG2	1.86	0.41
1:E:254:LEU:HA	1:E:254:LEU:HD23	1.77	0.41
1:A:77:LYS:HE3	1:A:101:GLU:OE2	2.21	0.41
1:B:358:LEU:HD12	1:B:358:LEU:HA	1.94	0.41
1:F:229:VAL:CG1	1:F:230:LEU:H	2.32	0.40
1:F:126:TYR:CD2	1:F:126:TYR:C	2.94	0.40
1:B:185:TYR:O	1:B:189:ILE:HG13	2.22	0.40
1:F:253:LEU:HD22	1:F:253:LEU:N	2.25	0.40
1:D:207:LYS:HE3	1:D:209:GLU:CG	2.46	0.40
1:E:77:LYS:HD3	1:E:82:PHE:HZ	1.86	0.40
1:G:133:VAL:HG12	1:G:134:MET:N	2.36	0.40
1:B:354:THR:HA	1:B:355:PRO:HD3	1.89	0.40
1:H:280:PRO:HB2	4:H:13:HOH:O	2.21	0.40
1:F:133:VAL:HG12	1:F:134:MET:N	2.37	0.40
1:A:286:ASN:HD22	1:A:289:LEU:H	1.63	0.40
1:B:349:ASN:H	1:B:349:ASN:HD22	1.69	0.40
1:H:133:VAL:HG12	1:H:134:MET:N	2.35	0.40
1:E:242:PHE:CZ	1:E:244:GLY:HA2	2.57	0.40

Continued on next page...

Continued from previous page...

Atom-1	Atom-2	Distance(Å)	Clash(Å)
1:A:233:GLU:OE2	4:A:424:HOH:O	2.22	0.40

There are no symmetry-related clashes.

5.3 Torsion angles

5.3.1 Protein backbone ⓘ

In the following table, the Percentiles column shows the percent Ramachandran outliers of the chain as a percentile score with respect to all X-ray entries followed by that with respect to entries of similar resolution. The Analysed column shows the number of residues for which the backbone conformation was analysed, and the total number of residues.

Mol	Chain	Analysed	Favoured	Allowed	Outliers	Percentiles	
1	A	279/316 (88%)	274 (98%)	5 (2%)	0	100	100
1	B	276/316 (87%)	271 (98%)	5 (2%)	0	100	100
1	C	279/316 (88%)	273 (98%)	6 (2%)	0	100	100
1	D	278/316 (88%)	272 (98%)	5 (2%)	1 (0%)	43	45
1	E	270/316 (85%)	260 (96%)	10 (4%)	0	100	100
1	F	271/316 (86%)	260 (96%)	11 (4%)	0	100	100
1	G	271/316 (86%)	261 (96%)	10 (4%)	0	100	100
1	H	271/316 (86%)	261 (96%)	10 (4%)	0	100	100
All	All	2195/2528 (87%)	2132 (97%)	62 (3%)	1 (0%)	100	100

All (1) Ramachandran outliers are listed below:

Mol	Chain	Res	Type
1	D	244	GLY

5.3.2 Protein sidechains ⓘ

In the following table, the Percentiles column shows the percent sidechain outliers of the chain as a percentile score with respect to all X-ray entries followed by that with respect to entries of similar resolution. The Analysed column shows the number of residues for which the sidechain conformation was analysed, and the total number of residues.

Mol	Chain	Analysed	Rotameric	Outliers	Percentiles	
1	A	239/273 (88%)	219 (92%)	20 (8%)	16	15
1	B	241/273 (88%)	224 (93%)	17 (7%)	21	21
1	C	238/273 (87%)	222 (93%)	16 (7%)	23	24
1	D	237/273 (87%)	221 (93%)	16 (7%)	22	23
1	E	220/273 (81%)	200 (91%)	20 (9%)	14	13
1	F	211/273 (77%)	185 (88%)	26 (12%)	7	5
1	G	215/273 (79%)	193 (90%)	22 (10%)	11	9
1	H	205/273 (75%)	187 (91%)	18 (9%)	14	13
All	All	1806/2184 (83%)	1651 (91%)	155 (9%)	15	14

All (155) residues with a non-rotameric sidechain are listed below:

Mol	Chain	Res	Type
1	A	75	ARG
1	A	93	PHE
1	A	116	ARG
1	A	152	ASP
1	A	153	GLU
1	A	160	SER
1	A	167	LEU
1	A	196	LEU
1	A	206	LEU
1	A	228	LYS
1	A	230	LEU
1	A	234	SER
1	A	247	GLN
1	A	256	GLU
1	A	258	SER
1	A	286	ASN
1	A	289	LEU
1	A	295	ILE
1	A	349	ASN
1	A	358	LEU
1	B	93	PHE
1	B	153	GLU
1	B	160	SER
1	B	167	LEU
1	B	196	LEU
1	B	228	LYS
1	B	230	LEU

Continued on next page...

Continued from previous page...

Mol	Chain	Res	Type
1	B	233	GLU
1	B	234	SER
1	B	247	GLN
1	B	256	GLU
1	B	258	SER
1	B	286	ASN
1	B	289	LEU
1	B	295	ILE
1	B	349	ASN
1	B	358	LEU
1	C	93	PHE
1	C	152	ASP
1	C	160	SER
1	C	167	LEU
1	C	196	LEU
1	C	228	LYS
1	C	230	LEU
1	C	236	GLN
1	C	247	GLN
1	C	256	GLU
1	C	258	SER
1	C	286	ASN
1	C	289	LEU
1	C	295	ILE
1	C	349	ASN
1	C	358	LEU
1	D	93	PHE
1	D	160	SER
1	D	167	LEU
1	D	172	ARG
1	D	196	LEU
1	D	228	LYS
1	D	230	LEU
1	D	234	SER
1	D	247	GLN
1	D	256	GLU
1	D	258	SER
1	D	286	ASN
1	D	289	LEU
1	D	295	ILE
1	D	349	ASN
1	D	358	LEU

Continued on next page...

Continued from previous page...

Mol	Chain	Res	Type
1	E	93	PHE
1	E	95	THR
1	E	101	GLU
1	E	117	HIS
1	E	133	VAL
1	E	135	SER
1	E	155	LEU
1	E	160	SER
1	E	172	ARG
1	E	173	LYS
1	E	196	LEU
1	E	223	ASP
1	E	226	THR
1	E	253	LEU
1	E	263	SER
1	E	286	ASN
1	E	289	LEU
1	E	303	GLU
1	E	345	VAL
1	E	358	LEU
1	F	77	LYS
1	F	95	THR
1	F	98	LEU
1	F	101	GLU
1	F	117	HIS
1	F	120	LYS
1	F	133	VAL
1	F	135	SER
1	F	152	ASP
1	F	154	LYS
1	F	155	LEU
1	F	160	SER
1	F	173	LYS
1	F	174	ILE
1	F	196	LEU
1	F	215	GLU
1	F	223	ASP
1	F	226	THR
1	F	253	LEU
1	F	257	LYS
1	F	261	LYS
1	F	286	ASN

Continued on next page...

Continued from previous page...

Mol	Chain	Res	Type
1	F	289	LEU
1	F	345	VAL
1	F	357	LYS
1	F	358	LEU
1	G	93	PHE
1	G	95	THR
1	G	117	HIS
1	G	120	LYS
1	G	133	VAL
1	G	135	SER
1	G	155	LEU
1	G	160	SER
1	G	173	LYS
1	G	196	LEU
1	G	215	GLU
1	G	223	ASP
1	G	226	THR
1	G	253	LEU
1	G	261	LYS
1	G	262	SER
1	G	286	ASN
1	G	289	LEU
1	G	303	GLU
1	G	329	GLU
1	G	345	VAL
1	G	358	LEU
1	H	93	PHE
1	H	95	THR
1	H	102	LEU
1	H	117	HIS
1	H	133	VAL
1	H	135	SER
1	H	160	SER
1	H	173	LYS
1	H	174	ILE
1	H	196	LEU
1	H	223	ASP
1	H	226	THR
1	H	253	LEU
1	H	263	SER
1	H	286	ASN
1	H	289	LEU

Continued on next page...

Continued from previous page...

Mol	Chain	Res	Type
1	H	345	VAL
1	H	358	LEU

Some sidechains can be flipped to improve hydrogen bonding and reduce clashes. All (25) such sidechains are listed below:

Mol	Chain	Res	Type
1	A	150	GLN
1	A	247	GLN
1	A	286	ASN
1	A	292	GLN
1	A	349	ASN
1	B	150	GLN
1	B	286	ASN
1	B	349	ASN
1	C	150	GLN
1	C	236	GLN
1	C	247	GLN
1	C	286	ASN
1	C	349	ASN
1	D	150	GLN
1	D	247	GLN
1	D	286	ASN
1	D	292	GLN
1	D	349	ASN
1	E	220	GLN
1	E	286	ASN
1	F	286	ASN
1	G	220	GLN
1	G	286	ASN
1	H	247	GLN
1	H	286	ASN

5.3.3 RNA ⓘ

There are no RNA chains in this entry.

5.4 Non-standard residues in protein, DNA, RNA chains ⓘ

7 non-standard protein/DNA/RNA residues are modelled in this entry.

In the following table, the Counts columns list the number of bonds (or angles) for which Mogul

statistics could be retrieved, the number of bonds (or angles) that are observed in the model and the number of bonds (or angles) that are defined in the chemical component dictionary. The Link column lists molecule types, if any, to which the group is linked. The Z score for a bond length (or angle) is the number of standard deviations the observed value is removed from the expected value. A bond length (or angle) with $|Z| > 2$ is considered an outlier worth inspection. RMSZ is the root-mean-square of all Z scores of the bond lengths (or angles).

Mol	Type	Chain	Res	Link	Bond lengths			Bond angles		
					Counts	RMSZ	# $ Z > 2$	Counts	RMSZ	# $ Z > 2$
1	SEP	A	241	1	9,9,10	6.17	3 (33%)	10,12,14	1.21	1 (10%)
1	SEP	B	241	1	9,9,10	6.06	3 (33%)	10,12,14	1.14	0
1	SEP	C	241	1	9,9,10	4.65	1 (11%)	10,12,14	1.52	3 (30%)
1	SEP	D	241	1	9,9,10	6.06	3 (33%)	10,12,14	1.18	1 (10%)
1	SEP	F	241	1	9,9,10	6.28	3 (33%)	10,12,14	1.02	1 (10%)
1	SEP	G	241	1	9,9,10	6.19	4 (44%)	10,12,14	1.25	2 (20%)
1	SEP	H	241	1	9,9,10	6.27	3 (33%)	10,12,14	0.98	1 (10%)

In the following table, the Chirals column lists the number of chiral outliers, the number of chiral centers analysed, the number of these observed in the model and the number defined in the chemical component dictionary. Similar counts are reported in the Torsion and Rings columns. '-' means no outliers of that kind were identified.

Mol	Type	Chain	Res	Link	Chirals	Torsions	Rings
1	SEP	A	241	1	-	0/6/8/10	0/0/0/0
1	SEP	B	241	1	-	0/6/8/10	0/0/0/0
1	SEP	C	241	1	-	0/6/8/10	0/0/0/0
1	SEP	D	241	1	-	0/6/8/10	0/0/0/0
1	SEP	F	241	1	-	0/6/8/10	0/0/0/0
1	SEP	G	241	1	-	0/6/8/10	0/0/0/0
1	SEP	H	241	1	-	0/6/8/10	0/0/0/0

All (20) bond length outliers are listed below:

Mol	Chain	Res	Type	Atoms	Z	Observed(Å)	Ideal(Å)
1	F	241	SEP	O-C	18.16	1.23	1.11
1	H	241	SEP	O-C	18.04	1.23	1.11
1	A	241	SEP	O-C	17.88	1.23	1.11
1	G	241	SEP	O-C	17.85	1.23	1.11
1	B	241	SEP	O-C	17.57	1.23	1.11
1	D	241	SEP	O-C	17.52	1.23	1.11
1	C	241	SEP	O-C	13.76	1.20	1.11
1	D	241	SEP	P-O1P	3.24	1.62	1.51
1	H	241	SEP	P-O1P	3.22	1.62	1.51

Continued on next page...

Continued from previous page...

Mol	Chain	Res	Type	Atoms	Z	Observed(Å)	Ideal(Å)
1	F	241	SEP	P-O1P	3.18	1.61	1.51
1	A	241	SEP	P-O1P	3.17	1.61	1.51
1	G	241	SEP	P-O1P	3.15	1.61	1.51
1	B	241	SEP	P-O1P	3.14	1.61	1.51
1	H	241	SEP	CA-C	3.13	1.54	1.48
1	F	241	SEP	CA-C	2.77	1.53	1.48
1	G	241	SEP	CA-C	2.76	1.53	1.48
1	A	241	SEP	CA-C	2.42	1.52	1.48
1	B	241	SEP	CA-C	2.29	1.52	1.48
1	D	241	SEP	CA-C	2.18	1.52	1.48
1	G	241	SEP	P-O2P	2.05	1.62	1.54

All (9) bond angle outliers are listed below:

Mol	Chain	Res	Type	Atoms	Z	Observed(°)	Ideal(°)
1	C	241	SEP	O2P-P-OG	2.58	113.77	106.65
1	A	241	SEP	O2P-P-OG	2.33	113.08	106.65
1	F	241	SEP	P-OG-CB	-2.26	111.64	118.19
1	H	241	SEP	P-OG-CB	-2.24	111.71	118.19
1	G	241	SEP	P-OG-CB	-2.22	111.76	118.19
1	C	241	SEP	OG-CB-CA	2.13	111.70	108.69
1	C	241	SEP	P-OG-CB	-2.10	112.12	118.19
1	D	241	SEP	O2P-P-OG	2.03	112.25	106.65
1	G	241	SEP	C-CA-N	-2.01	111.83	113.83

There are no chirality outliers.

There are no torsion outliers.

There are no ring outliers.

5.5 Carbohydrates

There are no carbohydrates in this entry.

5.6 Ligand geometry

Of 12 ligands modelled in this entry, 4 are monoatomic - leaving 8 for Mogul analysis.

In the following table, the Counts columns list the number of bonds (or angles) for which Mogul statistics could be retrieved, the number of bonds (or angles) that are observed in the model and the number of bonds (or angles) that are defined in the chemical component dictionary. The Link

column lists molecule types, if any, to which the group is linked. The Z score for a bond length (or angle) is the number of standard deviations the observed value is removed from the expected value. A bond length (or angle) with $|Z| > 2$ is considered an outlier worth inspection. RMSZ is the root-mean-square of all Z scores of the bond lengths (or angles).

Mol	Type	Chain	Res	Link	Bond lengths			Bond angles		
					Counts	RMSZ	# Z > 2	Counts	RMSZ	# Z > 2
2	1F8	A	1	-	16,17,17	1.63	2 (12%)	18,23,23	2.48	6 (33%)
2	1F8	B	1	-	16,17,17	1.61	2 (12%)	18,23,23	2.45	7 (38%)
2	1F8	C	1	-	16,17,17	1.63	2 (12%)	18,23,23	2.46	7 (38%)
2	1F8	D	1	-	16,17,17	1.61	2 (12%)	18,23,23	2.44	7 (38%)
2	1F8	E	1	-	16,17,17	1.62	2 (12%)	18,23,23	2.31	6 (33%)
2	1F8	F	1	-	16,17,17	1.64	2 (12%)	18,23,23	2.34	6 (33%)
2	1F8	G	1	-	16,17,17	1.62	2 (12%)	18,23,23	2.33	6 (33%)
2	1F8	H	1	-	16,17,17	1.63	2 (12%)	18,23,23	2.36	6 (33%)

In the following table, the Chirals column lists the number of chiral outliers, the number of chiral centers analysed, the number of these observed in the model and the number defined in the chemical component dictionary. Similar counts are reported in the Torsion and Rings columns. '-' means no outliers of that kind were identified.

Mol	Type	Chain	Res	Link	Chirals	Torsions	Rings
2	1F8	A	1	-	-	2/8/8/8	0/0/2/2
2	1F8	B	1	-	-	2/8/8/8	0/0/2/2
2	1F8	C	1	-	-	2/8/8/8	0/0/2/2
2	1F8	D	1	-	-	2/8/8/8	0/0/2/2
2	1F8	E	1	-	-	2/8/8/8	0/0/2/2
2	1F8	F	1	-	-	2/8/8/8	0/0/2/2
2	1F8	G	1	-	-	2/8/8/8	0/0/2/2
2	1F8	H	1	-	-	2/8/8/8	0/0/2/2

All (16) bond length outliers are listed below:

Mol	Chain	Res	Type	Atoms	Z	Observed(Å)	Ideal(Å)
2	F	1	1F8	C20-C21	4.58	1.49	1.42
2	A	1	1F8	C20-C21	4.56	1.49	1.42
2	C	1	1F8	C20-C21	4.53	1.49	1.42
2	H	1	1F8	C20-C21	4.48	1.48	1.42
2	D	1	1F8	C20-C21	4.41	1.48	1.42
2	B	1	1F8	C20-C21	4.41	1.48	1.42
2	G	1	1F8	C20-C21	4.39	1.48	1.42

Continued on next page...

Continued from previous page...

Mol	Chain	Res	Type	Atoms	Z	Observed(Å)	Ideal(Å)
2	E	1	1F8	C20-C21	4.35	1.48	1.42
2	A	1	1F8	C20-C24	2.72	1.49	1.40
2	C	1	1F8	C20-C24	2.68	1.49	1.40
2	E	1	1F8	C20-C24	2.67	1.48	1.40
2	F	1	1F8	C20-C24	2.66	1.48	1.40
2	D	1	1F8	C20-C24	2.66	1.48	1.40
2	H	1	1F8	C20-C24	2.65	1.48	1.40
2	G	1	1F8	C20-C24	2.62	1.48	1.40
2	B	1	1F8	C20-C24	2.57	1.48	1.40

All (51) bond angle outliers are listed below:

Mol	Chain	Res	Type	Atoms	Z	Observed(°)	Ideal(°)
2	B	1	1F8	C20-C21-C22	-6.87	102.57	107.44
2	A	1	1F8	C20-C21-C22	-6.84	102.59	107.44
2	F	1	1F8	C20-C21-C22	-6.83	102.60	107.44
2	C	1	1F8	C20-C21-C22	-6.80	102.62	107.44
2	H	1	1F8	C20-C21-C22	-6.72	102.67	107.44
2	G	1	1F8	C20-C21-C22	-6.72	102.67	107.44
2	D	1	1F8	C20-C21-C22	-6.72	102.68	107.44
2	E	1	1F8	C20-C21-C22	-6.60	102.76	107.44
2	C	1	1F8	C24-C20-C21	-4.19	106.86	109.22
2	D	1	1F8	C24-C20-C21	-4.16	106.88	109.22
2	A	1	1F8	C24-C20-C21	-4.16	106.88	109.22
2	B	1	1F8	C15-C16-N17	-3.86	103.80	112.45
2	B	1	1F8	C24-C20-C21	-3.84	107.06	109.22
2	A	1	1F8	C15-C16-N17	-3.81	103.90	112.45
2	C	1	1F8	C15-C16-N17	-3.73	104.08	112.45
2	D	1	1F8	C15-C16-N17	-3.72	104.12	112.45
2	E	1	1F8	C24-C20-C21	-3.68	107.15	109.22
2	G	1	1F8	C24-C20-C21	-3.67	107.16	109.22
2	H	1	1F8	C24-C20-C21	-3.62	107.19	109.22
2	F	1	1F8	C24-C20-C21	-3.54	107.23	109.22
2	D	1	1F8	C16-N17-C18	3.05	129.13	122.18
2	A	1	1F8	C29-C24-C20	2.98	136.03	128.69
2	A	1	1F8	C16-N17-C18	2.97	128.96	122.18
2	D	1	1F8	C29-C24-C20	2.94	135.92	128.69
2	C	1	1F8	C29-C24-C20	2.91	135.85	128.69
2	F	1	1F8	C15-C16-N17	-2.90	105.96	112.45
2	F	1	1F8	C29-C24-C20	2.88	135.78	128.69
2	G	1	1F8	C29-C24-C20	2.87	135.76	128.69
2	B	1	1F8	C29-C24-C20	2.87	135.76	128.69

Continued on next page...

Continued from previous page...

Mol	Chain	Res	Type	Atoms	Z	Observed(°)	Ideal(°)
2	G	1	1F8	C15-C16-N17	-2.87	106.02	112.45
2	E	1	1F8	C29-C24-C20	2.86	135.73	128.69
2	B	1	1F8	C16-N17-C18	2.86	128.70	122.18
2	H	1	1F8	C29-C24-C20	2.83	135.66	128.69
2	H	1	1F8	C15-C16-N17	-2.80	106.17	112.45
2	C	1	1F8	C16-N17-C18	2.78	128.52	122.18
2	E	1	1F8	C15-C16-N17	-2.65	106.51	112.45
2	H	1	1F8	C27-C28-C21	-2.50	117.24	120.88
2	H	1	1F8	C28-C21-C22	2.46	122.61	119.52
2	C	1	1F8	C27-C28-C21	-2.42	117.36	120.88
2	G	1	1F8	C28-C21-C22	2.37	122.48	119.52
2	D	1	1F8	C27-C28-C21	-2.33	117.48	120.88
2	G	1	1F8	C27-C28-C21	-2.33	117.48	120.88
2	E	1	1F8	C27-C28-C21	-2.32	117.51	120.88
2	B	1	1F8	C27-C28-C21	-2.31	117.52	120.88
2	F	1	1F8	C28-C21-C22	2.28	122.37	119.52
2	A	1	1F8	C27-C28-C21	-2.27	117.57	120.88
2	E	1	1F8	C28-C21-C22	2.26	122.34	119.52
2	F	1	1F8	C27-C28-C21	-2.24	117.61	120.88
2	B	1	1F8	C28-C21-C22	2.04	122.07	119.52
2	C	1	1F8	C28-C21-C22	2.01	122.04	119.52
2	D	1	1F8	C28-C21-C22	2.01	122.03	119.52

There are no chirality outliers.

All (16) torsion outliers are listed below:

Mol	Chain	Res	Type	Atoms
2	D	1	1F8	C24-C20-C18-N17
2	B	1	1F8	C24-C20-C18-N17
2	D	1	1F8	O19-C18-C20-C24
2	B	1	1F8	O19-C18-C20-C24
2	C	1	1F8	C24-C20-C18-N17
2	A	1	1F8	C24-C20-C18-N17
2	C	1	1F8	O19-C18-C20-C24
2	A	1	1F8	O19-C18-C20-C24
2	G	1	1F8	C24-C20-C18-N17
2	F	1	1F8	C24-C20-C18-N17
2	E	1	1F8	C24-C20-C18-N17
2	H	1	1F8	C24-C20-C18-N17
2	G	1	1F8	O19-C18-C20-C24
2	F	1	1F8	O19-C18-C20-C24
2	H	1	1F8	O19-C18-C20-C24

Continued on next page...

Continued from previous page...

Mol	Chain	Res	Type	Atoms
2	E	1	1F8	O19-C18-C20-C24

There are no ring outliers.

5.7 Other polymers ⓘ

There are no such residues in this entry.

5.8 Polymer linkage issues

There are no chain breaks in this entry.

6 Fit of model and data ⓘ

6.1 Protein, DNA and RNA chains ⓘ

In the following table, the column labelled ‘#RSRZ> 2’ contains the number (and percentage) of RSRZ outliers, followed by percent RSRZ outliers for the chain as percentile scores relative to all X-ray entries and entries of similar resolution. The OWAB column contains the minimum, median, 95th percentile and maximum values of the occupancy-weighted average B-factor per residue. The column labelled ‘Q< 0.9’ lists the number of (and percentage) of residues with an average occupancy less than 0.9.

Mol	Chain	Analysed	<RSRZ>	#RSRZ>2	OWAB(Å ²)	Q<0.9
1	A	284/316 (89%)	-0.00	7 (2%) 54 55	16, 32, 69, 100	0
1	B	281/316 (88%)	0.07	12 (4%) 34 34	17, 32, 70, 88	0
1	C	284/316 (89%)	0.10	16 (5%) 24 23	16, 32, 73, 98	0
1	D	283/316 (89%)	0.17	15 (5%) 25 25	17, 33, 72, 96	0
1	E	274/316 (86%)	0.27	16 (5%) 22 22	17, 41, 85, 109	0
1	F	275/316 (87%)	0.42	25 (9%) 9 9	18, 41, 86, 108	0
1	G	275/316 (87%)	0.32	22 (8%) 12 11	17, 42, 85, 109	0
1	H	275/316 (87%)	0.40	27 (9%) 8 7	17, 42, 86, 109	0
All	All	2231/2528 (88%)	0.22	140 (6%) 20 19	16, 37, 82, 109	0

All (140) RSRZ outliers are listed below:

Mol	Chain	Res	Type	RSRZ
1	F	82	PHE	8.0
1	E	243	VAL	7.0
1	H	124	VAL	6.9
1	H	82	PHE	5.7
1	H	102	LEU	5.7
1	E	242	PHE	5.6
1	D	102	LEU	5.4
1	A	242	PHE	5.1
1	G	243	VAL	4.9
1	H	84	PHE	4.6
1	F	84	PHE	4.6
1	F	102	LEU	4.4
1	H	258	SER	4.4
1	H	122	ASN	4.4
1	D	103	ALA	4.3
1	D	77	LYS	4.0

Continued on next page...

Continued from previous page...

Mol	Chain	Res	Type	RSRZ
1	F	88	LEU	3.9
1	H	243	VAL	3.9
1	D	76	LYS	3.9
1	H	106	ARG	3.8
1	E	80	GLU	3.8
1	C	152	ASP	3.7
1	H	125	PRO	3.7
1	C	102	LEU	3.7
1	G	230	LEU	3.7
1	C	243	VAL	3.7
1	F	125	PRO	3.7
1	F	124	VAL	3.6
1	C	93	PHE	3.6
1	E	84	PHE	3.6
1	D	242	PHE	3.6
1	F	99	ALA	3.5
1	G	359	THR	3.5
1	D	105	SER	3.5
1	G	99	ALA	3.4
1	E	124	VAL	3.4
1	G	84	PHE	3.4
1	E	258	SER	3.4
1	F	80	GLU	3.3
1	E	104	THR	3.2
1	B	243	VAL	3.2
1	C	242	PHE	3.1
1	H	80	GLU	3.1
1	A	152	ASP	3.1
1	F	103	ALA	3.1
1	F	108	TYR	3.1
1	H	85	GLY	3.1
1	G	80	GLU	3.1
1	G	82	PHE	3.0
1	C	105	SER	3.0
1	E	102	LEU	3.0
1	F	230	LEU	3.0
1	H	88	LEU	3.0
1	B	93	PHE	3.0
1	F	109	ALA	3.0
1	E	90	GLU	2.9
1	H	242	PHE	2.9
1	F	91	GLY	2.9

Continued on next page...

Continued from previous page...

Mol	Chain	Res	Type	RSRZ
1	F	122	ASN	2.9
1	H	79	PRO	2.9
1	H	105	SER	2.9
1	H	90	GLU	2.8
1	C	259	ALA	2.8
1	B	77	LYS	2.7
1	E	88	LEU	2.7
1	G	117	HIS	2.7
1	A	76	LYS	2.7
1	D	82	PHE	2.7
1	G	125	PRO	2.7
1	F	77	LYS	2.7
1	F	359	THR	2.6
1	G	88	LEU	2.6
1	H	92	SER	2.6
1	H	113	LEU	2.6
1	C	106	ARG	2.6
1	F	105	SER	2.6
1	F	128	THR	2.6
1	F	107	GLU	2.6
1	G	122	ASN	2.6
1	H	244	GLY	2.6
1	A	243	VAL	2.6
1	F	243	VAL	2.5
1	C	104	THR	2.5
1	G	93	PHE	2.5
1	F	104	THR	2.5
1	C	79	PRO	2.4
1	D	148	CYS	2.4
1	F	113	LEU	2.4
1	G	242	PHE	2.4
1	G	258	SER	2.4
1	D	84	PHE	2.4
1	C	81	ASP	2.4
1	F	138	ASP	2.3
1	E	122	ASN	2.3
1	H	98	LEU	2.3
1	H	75	ARG	2.3
1	G	91	GLY	2.3
1	B	104	THR	2.3
1	H	76	LYS	2.3
1	E	244	GLY	2.2

Continued on next page...

Continued from previous page...

Mol	Chain	Res	Type	RSRZ
1	C	80	GLU	2.2
1	E	117	HIS	2.2
1	A	238	ARG	2.2
1	C	76	LYS	2.2
1	F	90	GLU	2.2
1	B	235	LYS	2.2
1	B	105	SER	2.2
1	D	151	ASP	2.2
1	H	91	GLY	2.2
1	G	103	ALA	2.2
1	B	80	GLU	2.2
1	C	151	ASP	2.2
1	C	114	GLU	2.2
1	G	104	THR	2.2
1	G	75	ARG	2.1
1	E	82	PHE	2.1
1	D	104	THR	2.1
1	H	104	THR	2.1
1	H	117	HIS	2.1
1	B	91	GLY	2.1
1	D	152	ASP	2.1
1	C	118	ILE	2.1
1	F	118	ILE	2.1
1	A	75	ARG	2.1
1	D	240	ASN	2.1
1	A	91	GLY	2.1
1	D	243	VAL	2.1
1	G	175	GLY	2.1
1	E	125	PRO	2.1
1	G	216	ASP	2.1
1	G	102	LEU	2.1
1	D	100	ARG	2.1
1	B	240	ASN	2.1
1	B	242	PHE	2.1
1	G	113	LEU	2.0
1	H	95	THR	2.0
1	B	106	ARG	2.0
1	H	103	ALA	2.0
1	B	151	ASP	2.0
1	E	92	SER	2.0

6.2 Non-standard residues in protein, DNA, RNA chains ⓘ

In the following table, the Atoms column lists the number of modelled atoms in the group and the number defined in the chemical component dictionary. LLDF column lists the quality of electron density of the group with respect to its neighbouring residues in protein, DNA or RNA chains. The B-factors column lists the minimum, median, 95th percentile and maximum values of B factors of atoms in the group. The column labelled 'Q< 0.9' lists the number of atoms with occupancy less than 0.9.

Mol	Type	Chain	Res	Atoms	RSR	LLDF	B-factors(Å ²)	Q<0.9
1	SEP	F	241	10/11	0.32	1.90	70,81,94,96	0
1	SEP	G	241	10/11	0.30	0.82	66,78,100,109	0
1	SEP	H	241	10/11	0.24	-0.41	64,81,89,93	0
1	SEP	C	241	10/11	0.16	-0.54	48,64,81,86	0
1	SEP	A	241	10/11	0.14	-0.58	45,61,78,84	0
1	SEP	D	241	10/11	0.14	-0.94	45,60,82,85	0
1	SEP	B	241	10/11	0.12	-1.50	46,61,81,86	0

6.3 Carbohydrates ⓘ

There are no carbohydrates in this entry.

6.4 Ligands ⓘ

In the following table, the Atoms column lists the number of modelled atoms in the group and the number defined in the chemical component dictionary. LLDF column lists the quality of electron density of the group with respect to its neighbouring residues in protein, DNA or RNA chains. The B-factors column lists the minimum, median, 95th percentile and maximum values of B factors of atoms in the group. The column labelled 'Q< 0.9' lists the number of atoms with occupancy less than 0.9.

Mol	Type	Chain	Res	Atoms	RSR	LLDF	B-factors(Å ²)	Q<0.9
3	CL	A	2	1/1	0.20	9.05	45,45,45,45	0
2	1F8	H	1	16/16	0.41	6.22	87,98,109,112	0
2	1F8	B	1	16/16	0.37	5.95	72,89,110,121	0
2	1F8	E	1	16/16	0.38	4.22	87,96,108,111	0
2	1F8	A	1	16/16	0.40	3.55	72,88,110,120	0
2	1F8	G	1	16/16	0.30	3.53	87,98,108,110	0
2	1F8	F	1	16/16	0.35	2.41	87,97,109,111	0
2	1F8	C	1	16/16	0.33	2.30	71,88,109,120	0
2	1F8	D	1	16/16	0.31	1.36	73,88,110,120	0
3	CL	D	360	1/1	0.17	0.89	50,50,50,50	0
3	CL	C	6	1/1	0.14	0.20	46,46,46,46	0

Continued on next page...

Continued from previous page...

Mol	Type	Chain	Res	Atoms	RSR	LLDF	B-factors(\AA^2)	Q<0.9
3	CL	B	5	1/1	0.14	-1.13	44,44,44,44	0

6.5 Other polymers ⓘ

There are no such residues in this entry.