



# Full wwPDB X-ray Structure Validation Report ⓘ

Mar 1, 2014 – 04:23 AM GMT

PDB ID : 2OSB  
Title : Crystal structure of a thermostable mutant of Bacillus subtilis Adenylate Kinase (Q16L/Q199R/)  
Authors : Myers, J.; Counago, R.; Wilson, C.J.; Wu, G.; Shamoo, Y.  
Deposited on : 2007-02-05  
Resolution : 1.80 Å(reported)

This is a full wwPDB validation report for a publicly released PDB entry.  
We welcome your comments at [validation@mail.wwpdb.org](mailto:validation@mail.wwpdb.org)  
A user guide is available at <http://wwpdb.org/ValidationPDFNotes.html>

---

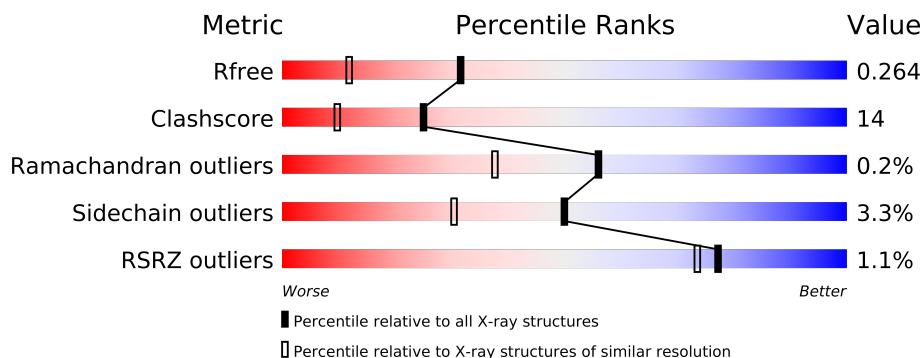
The following versions of software and data (see [references](#)) were used in the production of this report:

MolProbity : 4.02b-467  
Mogul : 1.15 2013  
Xtriage (Phenix) : dev-1323  
EDS : stable22639  
Percentile statistics : 21963  
Refmac : 5.8.0049  
CCP4 : 6.3.0 (Settle)  
Ideal geometry (proteins) : Engh & Huber (2001)  
Ideal geometry (DNA, RNA) : Parkinson et. al. (1996)  
Validation Pipeline (wwPDB-VP) : stable22683

# 1 Overall quality at a glance

The reported resolution of this entry is 1.80 Å.

Percentile scores (ranging between 0-100) for global validation metrics of the entry are shown in the following graphic. The table shows the number of entries on which the scores are based.



Metric	Whole archive (#Entries)	Similar resolution (#Entries, resolution range(Å))
$R_{free}$	66092	3513 (1.80-1.80)
Clashscore	79885	4461 (1.80-1.80)
Ramachandran outliers	78287	4404 (1.80-1.80)
Sidechain outliers	78261	4403 (1.80-1.80)
RSRZ outliers	66119	3515 (1.80-1.80)

The table below summarises the geometric issues observed across the polymeric chains and their fit to the electron density. The red, orange, yellow and green segments on the lower bar indicate the fraction of residues that contain outliers for  $\geq 3$ , 2, 1 and 0 types of geometric quality criteria. The upper red bar (where present) indicates the fraction of residues that have poor fit to the electron density.

Mol	Chain	Length	Quality of chain
1	A	216	
1	B	216	

The following table lists non-polymeric compounds that are outliers for geometric or electron-density-fit criteria:

Mol	Type	Chain	Res	Geometry	Electron density
3	MG	A	1223	-	X
3	MG	B	1222	-	X

## 2 Entry composition

There are 5 unique types of molecules in this entry. The entry contains 3759 atoms, of which 0 are hydrogen and 0 are deuterium.

In the tables below, the ZeroOcc column contains the number of atoms modelled with zero occupancy, the AltConf column contains the number of residues with at least one atom in alternate conformation and the Trace column contains the number of residues modelled with at most 2 atoms.

- Molecule 1 is a protein called Adenylate kinase.

Mol	Chain	Residues	Atoms					ZeroOcc	AltConf	Trace
1	A	216	Total	C	N	O	S	0	0	0
			1682	1056	281	335	10			
1	B	216	Total	C	N	O	S	0	0	0
			1682	1056	281	335	10			

There are 4 discrepancies between the modelled and reference sequences:

Chain	Residue	Modelled	Actual	Comment	Reference
A	16	LEU	GLN	ENGINEERED	UNP P16304
A	199	ARG	GLN	ENGINEERED	UNP P16304
B	16	LEU	GLN	ENGINEERED	UNP P16304
B	199	ARG	GLN	ENGINEERED	UNP P16304

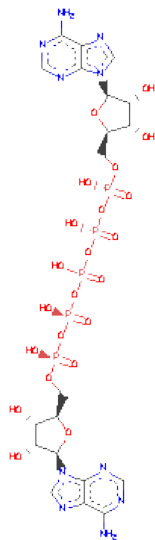
- Molecule 2 is ZINC ION (three-letter code: ZN) (formula: Zn).

Mol	Chain	Residues	Atoms		ZeroOcc	AltConf
2	B	1	Total	Zn	0	0
			1	1		
2	A	1	Total	Zn	0	0
			1	1		

- Molecule 3 is MAGNESIUM ION (three-letter code: MG) (formula: Mg).

Mol	Chain	Residues	Atoms		ZeroOcc	AltConf
3	B	1	Total	Mg	0	0
			1	1		
3	A	1	Total	Mg	0	0
			1	1		

- Molecule 4 is BIS(ADENOSINE)-5'-PENTAPHOSPHATE (three-letter code: AP5) (formula: C<sub>20</sub>H<sub>29</sub>N<sub>10</sub>O<sub>22</sub>P<sub>5</sub>).



Mol	Chain	Residues	Atoms					ZeroOcc	AltConf
4	A	1	Total	C	N	O	P	0	0
			57	20	10	22	5		
4	B	1	Total	C	N	O	P	0	0
			57	20	10	22	5		

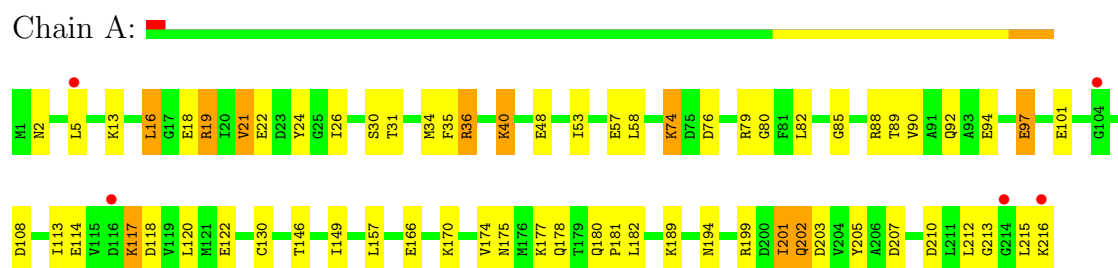
- Molecule 5 is water.

Mol	Chain	Residues	Atoms		ZeroOcc	AltConf
5	A	162	Total	O	0	0
			162	162		
5	B	115	Total	O	0	0
			115	115		

### 3 Residue-property plots

These plots are drawn for all protein, RNA and DNA chains in the entry. The first graphic for a chain summarises the proportions of errors displayed in the second graphic. The second graphic shows the sequence view annotated by issues in geometry and electron density. Residues are color-coded according to the number of geometric quality criteria for which they contain at least one outlier: green = 0, yellow = 1, orange = 2 and red = 3 or more. A red dot above a residue indicates a poor fit to the electron density ( $RSRZ > 2$ ). Stretches of 2 or more consecutive residues without any outlier are shown as a green connector. Residues present in the sample, but not in the model, are shown in grey.

- Molecule 1: Adenylate kinase



- Molecule 1: Adenylate kinase



## 4 Data and refinement statistics

Property	Value	Source
Space group	P 1 21 1	Depositor
Cell constants a, b, c, $\alpha$ , $\beta$ , $\gamma$	34.58Å 74.32Å 77.42Å 90.00° 100.21° 90.00°	Depositor
Resolution (Å)	20.00 – 1.80 30.43 – 1.64	Depositor EDS
% Data completeness (in resolution range)	97.3 (20.00-1.80) 91.3 (30.43-1.64)	Depositor EDS
$R_{merge}$	0.06	Depositor
$R_{sym}$	(Not available)	Depositor
$\langle I/\sigma(I) \rangle$ <sup>1</sup>	0.50 (at 1.63Å)	Xtriage
Refinement program	CNS	Depositor
R, $R_{free}$	0.245 , 0.264 0.245 , 0.264	Depositor DCC
$R_{free}$ test set	1781 reflections (5.12%)	DCC
Wilson B-factor (Å <sup>2</sup> )	23.2	Xtriage
Anisotropy	0.190	Xtriage
Bulk solvent $k_{sol}$ (e/Å <sup>3</sup> ), $B_{sol}$ (Å <sup>2</sup> )	0.34 , 29.4	EDS
Estimated twinning fraction	0.044 for h,-k,-h-l	Xtriage
L-test for twinning	$\langle  L  \rangle = 0.47$ , $\langle L^2 \rangle = 0.30$	Xtriage
Outliers	0 of 45637 reflections	Xtriage
$F_o, F_c$ correlation	0.94	EDS
Total number of atoms	3759	wwPDB-VP
Average B, all atoms (Å <sup>2</sup> )	26.0	wwPDB-VP

Xtriage's analysis on translational NCS is as follows: *The analyses of the Patterson function reveals a significant off-origin peak that is 38.54 % of the origin peak, indicating pseudo translational symmetry. The chance of finding a peak of this or larger height randomly in a structure without pseudo translational symmetry is equal to 3.6319e-04.*

<sup>1</sup>Intensities estimated from amplitudes.

## 5 Model quality

### 5.1 Standard geometry

Bond lengths and bond angles in the following residue types are not validated in this section: ZN, MG, AP5

The Z score for a bond length (or angle) is the number of standard deviations the observed value is removed from the expected value. A bond length (or angle) with  $|Z| > 5$  is considered an outlier worth inspection. RMSZ is the root-mean-square of all Z scores of the bond lengths (or angles).

Mol	Chain	Bond lengths		Bond angles	
		RMSZ	$\# Z  > 5$	RMSZ	$\# Z  > 5$
1	A	0.57	2/1707 (0.1%)	0.76	3/2301 (0.1%)
1	B	0.36	1/1707 (0.1%)	0.61	1/2301 (0.0%)
All	All	0.47	3/3414 (0.1%)	0.69	4/4602 (0.1%)

Chiral center outliers are detected by calculating the chiral volume of a chiral center and verifying if the center is modelled as a planar moiety or with the opposite hand. A planarity outlier is detected by checking planarity of atoms in a peptide group, atoms in a mainchain group or atoms of a sidechain that are expected to be planar.

Mol	Chain	#Chirality outliers	#Planarity outliers
1	A	0	1
1	B	0	1
All	All	0	2

All (3) bond length outliers are listed below:

Mol	Chain	Res	Type	Atoms	Z	Observed(Å)	Ideal(Å)
1	A	202	GLN	C-N	15.10	1.68	1.34
1	B	116	ASP	C-N	-6.77	1.18	1.34
1	A	201	ILE	C-N	5.59	1.47	1.34

All (4) bond angle outliers are listed below:

Mol	Chain	Res	Type	Atoms	Z	Observed(°)	Ideal(°)
1	A	201	ILE	O-C-N	-10.44	106.00	122.70
1	A	201	ILE	CA-C-N	7.10	132.82	117.20
1	B	116	ASP	O-C-N	-7.00	111.50	122.70
1	A	201	ILE	C-N-CA	6.40	137.71	121.70

There are no chirality outliers.

All (2) planarity outliers are listed below:

Mol	Chain	Res	Type	Group
1	A	118	ASP	Mainchain
1	B	118	ASP	Mainchain

## 5.2 Close contacts ⓘ

In the following table, the Non-H and H(model) columns list the number of non-hydrogen atoms and hydrogen atoms in the chain respectively. The H(added) column lists the number of hydrogens added by MolProbity. The Clashes column lists the number of clashes within the asymmetric unit, and the number in parentheses is this value normalized per 1000 atoms of the molecule in the chain. The Symm-Clashes column gives symmetry related clashes, in the same way as for the Clashes column.

Mol	Chain	Non-H	H(model)	H(added)	Clashes	Symm-Clashes
1	A	1682	0	1674	60	0
1	B	1682	0	1673	36	0
2	A	1	0	0	0	0
2	B	1	0	0	0	0
3	A	1	0	0	0	0
3	B	1	0	0	0	0
4	A	57	0	24	3	0
4	B	57	0	24	1	0
5	A	162	0	0	14	0
5	B	115	0	0	3	0
All	All	3759	0	3395	95	0

Clashscore is defined as the number of clashes calculated for the entry per 1000 atoms (including hydrogens) of the entry. The overall clashscore for this entry is 14.

All (95) close contacts within the same asymmetric unit are listed below.

Atom-1	Atom-2	Distance(Å)	Clash(Å)
1:A:202:GLN:C	1:A:203:ASP:N	1.68	1.42
1:A:177:LYS:HE3	5:A:1270:HOH:O	1.43	1.19
1:A:114:GLU:OE2	1:A:194:ASN:HB3	1.48	1.11
1:A:21:VAL:HG23	1:A:26:ILE:O	1.50	1.11
1:B:21:VAL:HG11	1:B:28:HIS:HB2	1.36	1.03
1:A:57:GLU:OE2	5:A:1336:HOH:O	1.78	1.00
1:A:57:GLU:HG2	5:A:1336:HOH:O	1.62	0.99
1:A:166:GLU:OE2	5:A:1318:HOH:O	1.80	0.97
1:A:97:GLU:HA	1:A:97:GLU:OE1	1.63	0.94
1:A:57:GLU:CG	5:A:1336:HOH:O	2.18	0.85
1:B:116:ASP:OD1	5:B:1245:HOH:O	1.96	0.82

*Continued on next page...*



*Continued from previous page...*

Atom-1	Atom-2	Distance(Å)	Clash(Å)
1:B:102:GLU:OE1	5:B:1236:HOH:O	1.97	0.80
1:A:213:GLY:O	5:A:1300:HOH:O	2.06	0.73
1:A:85:GLY:O	1:A:88:ARG:HD2	1.92	0.69
1:A:57:GLU:CD	5:A:1336:HOH:O	2.17	0.69
1:A:36:ARG:HD3	5:A:1259:HOH:O	1.93	0.69
1:B:117:LYS:HD2	1:B:176:MET:SD	2.34	0.68
1:A:16:LEU:HD12	1:A:113:ILE:CD1	2.24	0.67
1:A:202:GLN:C	1:A:203:ASP:CA	2.63	0.66
1:B:97:GLU:O	1:B:101:GLU:HG3	1.97	0.64
1:A:92:GLN:HE22	4:A:1218:AP5:H62B	1.46	0.63
1:A:216:LYS:HG3	1:A:216:LYS:OXT	1.98	0.62
1:B:16:LEU:HD12	1:B:113:ILE:HD13	1.82	0.62
1:A:5:LEU:HG	1:A:82:LEU:HD11	1.82	0.61
1:A:13:LYS:HG3	5:A:1292:HOH:O	2.00	0.61
1:A:178:GLN:O	1:A:181:PRO:HG2	2.01	0.61
1:A:212:LEU:HA	1:A:215:LEU:HD12	1.84	0.60
1:A:202:GLN:CD	1:A:202:GLN:H	2.05	0.59
1:B:63:VAL:O	1:B:67:ILE:HG23	2.04	0.57
1:A:88:ARG:HE	1:A:175:ASN:HD21	1.53	0.57
1:B:88:ARG:HH21	1:B:175:ASN:HD21	1.52	0.57
1:B:92:GLN:HE22	4:B:1219:AP5:H62B	1.51	0.57
1:A:202:GLN:CA	1:A:203:ASP:N	2.66	0.56
1:A:2:ASN:ND2	1:A:80:GLY:HA2	2.23	0.54
1:A:48:GLU:HG3	5:A:1262:HOH:O	2.08	0.53
1:A:16:LEU:HD12	1:A:113:ILE:HD11	1.88	0.53
1:A:16:LEU:HD12	1:A:113:ILE:HD13	1.89	0.53
1:B:188:GLU:OE2	1:B:189:LYS:HD3	2.09	0.53
1:A:89:THR:OG1	1:A:92:GLN:HG3	2.09	0.53
1:B:130:CYS:HA	1:B:157:LEU:HD23	1.89	0.53
1:A:18:GLU:O	1:A:22:GLU:HG3	2.08	0.52
1:A:97:GLU:OE1	5:A:1273:HOH:O	2.18	0.52
1:A:88:ARG:HA	1:A:182:LEU:HD11	1.92	0.52
1:B:172:LEU:O	1:B:176:MET:HB2	2.09	0.52
1:A:101:GLU:HG3	1:B:47:LEU:HD21	1.92	0.52
1:A:88:ARG:HB2	5:A:1272:HOH:O	2.10	0.52
1:B:88:ARG:HD3	1:B:175:ASN:ND2	2.26	0.51
1:B:58:LEU:HG	1:B:174:VAL:CG1	2.39	0.51
1:A:74:LYS:HB3	1:A:76:ASP:OD2	2.11	0.51
1:A:90:VAL:O	1:A:94:GLU:HG3	2.11	0.51
1:B:4:VAL:HG23	1:B:107:ILE:HD12	1.92	0.50
1:B:58:LEU:HG	1:B:174:VAL:HG11	1.92	0.49
1:A:88:ARG:HD3	4:A:1218:AP5:C5B	2.42	0.49

*Continued on next page...*

*Continued from previous page...*

Atom-1	Atom-2	Distance(Å)	Clash(Å)
1:A:180:GLN:N	1:A:181:PRO:HD2	2.28	0.49
1:A:88:ARG:HD3	4:A:1218:AP5:C6B	2.43	0.48
1:B:64:THR:O	1:B:67:ILE:HG12	2.13	0.48
1:B:88:ARG:HD3	1:B:175:ASN:HD21	1.79	0.48
1:A:189:LYS:NZ	5:A:1323:HOH:O	2.46	0.48
1:A:88:ARG:HE	1:A:175:ASN:ND2	2.12	0.47
1:B:16:LEU:HD12	1:B:113:ILE:CD1	2.44	0.47
1:A:215:LEU:O	1:A:216:LYS:HB3	2.15	0.47
1:A:117:LYS:HA	1:A:120:LEU:HD12	1.97	0.47
1:A:21:VAL:CG2	1:A:26:ILE:O	2.41	0.46
1:A:170:LYS:O	1:A:174:VAL:HG23	2.15	0.46
1:A:199:ARG:HH22	1:A:207:ASP:CG	2.19	0.45
1:B:19:ARG:HG3	1:B:19:ARG:HH11	1.82	0.45
1:A:201:ILE:HG23	5:A:1285:HOH:O	2.15	0.45
1:B:119:VAL:HG21	1:B:198:GLN:HE21	1.82	0.45
1:B:5:LEU:HD11	1:B:113:ILE:HD11	1.99	0.45
1:A:146:THR:HB	1:A:149:ILE:HD11	2.00	0.44
1:B:177:LYS:HG3	5:B:1294:HOH:O	2.17	0.44
1:A:122:GLU:OE1	1:A:122:GLU:HA	2.18	0.44
1:B:58:LEU:HD22	1:B:88:ARG:HD2	1.98	0.44
1:A:18:GLU:O	1:A:21:VAL:HG12	2.18	0.43
1:B:133:CYS:SG	1:B:135:THR:HG22	2.59	0.43
1:B:17:GLY:O	1:B:21:VAL:HG13	2.18	0.43
1:B:185:PHE:O	1:B:189:LYS:HG2	2.19	0.43
1:A:35:PHE:HB3	1:A:53:ILE:HD11	2.00	0.43
1:A:5:LEU:HD23	1:A:5:LEU:HA	1.89	0.42
1:B:4:VAL:HB	1:B:110:VAL:HG22	2.01	0.42
1:A:19:ARG:HG3	1:A:205:TYR:CE2	2.54	0.42
1:B:177:LYS:HB3	1:B:177:LYS:HE2	1.77	0.42
1:B:117:LYS:C	1:B:119:VAL:H	2.24	0.42
1:B:124:LEU:HD12	1:B:168:VAL:HG13	2.02	0.42
1:B:79:ARG:NE	1:B:79:ARG:HA	2.35	0.42
1:A:108:ASP:CG	1:A:215:LEU:HD22	2.40	0.41
1:A:24:TYR:CE1	1:A:212:LEU:HD23	2.55	0.41
1:A:130:CYS:HA	1:A:157:LEU:HD23	2.01	0.41
1:B:109:TYR:HA	1:B:191:TYR:HB2	2.02	0.41
1:B:115:VAL:HG13	1:B:198:GLN:CG	2.50	0.41
1:A:30:SER:O	1:A:34:MET:HG3	2.21	0.41
1:A:58:LEU:HG	1:A:174:VAL:HG11	2.03	0.41
1:A:40:LYS:HB3	1:A:40:LYS:HE3	1.50	0.40
1:A:19:ARG:HA	1:A:19:ARG:HD2	1.51	0.40
1:B:130:CYS:SG	1:B:132:VAL:HB	2.62	0.40

There are no symmetry-related clashes.

## 5.3 Torsion angles

### 5.3.1 Protein backbone ⓘ

In the following table, the Percentiles column shows the percent Ramachandran outliers of the chain as a percentile score with respect to all X-ray entries followed by that with respect to entries of similar resolution. The Analysed column shows the number of residues for which the backbone conformation was analysed, and the total number of residues.

Mol	Chain	Analysed	Favoured	Allowed	Outliers	Percentiles	
1	A	214/216 (99%)	209 (98%)	5 (2%)	0	100	100
1	B	214/216 (99%)	207 (97%)	6 (3%)	1 (0%)	38	19
All	All	428/432 (99%)	416 (97%)	11 (3%)	1 (0%)	56	38

All (1) Ramachandran outliers are listed below:

Mol	Chain	Res	Type
1	B	118	ASP

### 5.3.2 Protein sidechains ⓘ

In the following table, the Percentiles column shows the percent sidechain outliers of the chain as a percentile score with respect to all X-ray entries followed by that with respect to entries of similar resolution. The Analysed column shows the number of residues for which the sidechain conformation was analysed, and the total number of residues.

Mol	Chain	Analysed	Rotameric	Outliers	Percentiles	
1	A	183/183 (100%)	172 (94%)	11 (6%)	27	10
1	B	183/183 (100%)	182 (100%)	1 (0%)	94	92
All	All	366/366 (100%)	354 (97%)	12 (3%)	50	30

All (12) residues with a non-rotameric sidechain are listed below:

Mol	Chain	Res	Type
1	A	16	LEU
1	A	19	ARG
1	A	21	VAL
1	A	31	THR
1	A	36	ARG

*Continued on next page...*

*Continued from previous page...*

Mol	Chain	Res	Type
1	A	40	LYS
1	A	74	LYS
1	A	79	ARG
1	A	97	GLU
1	A	117	LYS
1	A	210	ASP
1	B	31	THR

Some sidechains can be flipped to improve hydrogen bonding and reduce clashes. All (11) such sidechains are listed below:

Mol	Chain	Res	Type
1	A	2	ASN
1	A	92	GLN
1	A	164	ASN
1	A	175	ASN
1	B	92	GLN
1	B	112	ASN
1	B	142	ASN
1	B	175	ASN
1	B	180	GLN
1	B	198	GLN
1	B	202	GLN

### 5.3.3 RNA ⓘ

There are no RNA chains in this entry.

### 5.4 Non-standard residues in protein, DNA, RNA chains ⓘ

There are no non-standard protein/DNA/RNA residues in this entry.

### 5.5 Carbohydrates ⓘ

There are no carbohydrates in this entry.

### 5.6 Ligand geometry ⓘ

Of 6 ligands modelled in this entry, 4 are monoatomic - leaving 2 for Mogul analysis.

In the following table, the Counts columns list the number of bonds (or angles) for which Mogul statistics could be retrieved, the number of bonds (or angles) that are observed in the model and the number of bonds (or angles) that are defined in the chemical component dictionary. The Link column lists molecule types, if any, to which the group is linked. The Z score for a bond length (or angle) is the number of standard deviations the observed value is removed from the expected value. A bond length (or angle) with  $|Z| > 2$  is considered an outlier worth inspection. RMSZ is the root-mean-square of all Z scores of the bond lengths (or angles).

Mol	Type	Chain	Res	Link	Bond lengths			Bond angles		
					Counts	RMSZ	# $ Z  > 2$	Counts	RMSZ	# $ Z  > 2$
4	AP5	A	1218	3	62,62,62	1.92	15 (24%)	98,98,98	2.36	23 (23%)
4	AP5	B	1219	-	62,62,62	1.84	13 (20%)	98,98,98	2.38	25 (25%)

In the following table, the Chirals column lists the number of chiral outliers, the number of chiral centers analysed, the number of these observed in the model and the number defined in the chemical component dictionary. Similar counts are reported in the Torsion and Rings columns. '-' means no outliers of that kind were identified.

Mol	Type	Chain	Res	Link	Chirals	Torsions	Rings
4	AP5	A	1218	3	-	0/44/76/76	0/2/6/6
4	AP5	B	1219	-	-	0/44/76/76	0/2/6/6

All (28) bond length outliers are listed below:

Mol	Chain	Res	Type	Atoms	Z	Observed(Å)	Ideal(Å)
4	A	1218	AP5	PD-O3D	-5.98	1.49	1.59
4	B	1219	AP5	PE-O3D	-5.72	1.49	1.59
4	B	1219	AP5	PD-O3D	-5.72	1.49	1.59
4	A	1218	AP5	PG-O3G	-5.60	1.49	1.59
4	A	1218	AP5	PE-O3D	-5.37	1.50	1.59
4	A	1218	AP5	PD-O3G	-5.06	1.50	1.59
4	B	1219	AP5	PG-O3G	-4.88	1.51	1.59
4	B	1219	AP5	PD-O3G	-4.32	1.52	1.59
4	A	1218	AP5	PB-O3B	-3.48	1.53	1.59
4	B	1219	AP5	C4A-N9A	-3.48	1.32	1.37
4	A	1218	AP5	PG-O3B	-3.26	1.54	1.59
4	B	1219	AP5	PG-O3B	-2.90	1.54	1.59
4	B	1219	AP5	C4B-N9B	-2.60	1.33	1.37
4	A	1218	AP5	O4J-C1J	2.48	1.45	1.41
4	B	1219	AP5	C2F-C1F	-2.45	1.50	1.53
4	B	1219	AP5	O4J-C1J	2.38	1.45	1.41
4	A	1218	AP5	C4B-N9B	-2.35	1.34	1.37
4	B	1219	AP5	O4F-C1F	2.26	1.44	1.41
4	B	1219	AP5	PB-O3B	-2.26	1.55	1.59

*Continued on next page...*

*Continued from previous page...*

Mol	Chain	Res	Type	Atoms	Z	Observed(Å)	Ideal(Å)
4	A	1218	AP5	O4F-C1F	2.25	1.44	1.41
4	B	1219	AP5	C1J-N9B	2.23	1.55	1.48
4	A	1218	AP5	C1J-N9B	2.17	1.55	1.48
4	A	1218	AP5	PG-O2G	-2.12	1.45	1.55
4	A	1218	AP5	C2A-N3A	2.12	1.36	1.32
4	B	1219	AP5	PG-O2G	-2.06	1.45	1.55
4	A	1218	AP5	PB-O3A	-2.05	1.56	1.59
4	A	1218	AP5	C4A-N9A	-2.04	1.34	1.37
4	A	1218	AP5	C5A-N7A	-2.02	1.32	1.40

All (48) bond angle outliers are listed below:

Mol	Chain	Res	Type	Atoms	Z	Observed(°)	Ideal(°)
4	B	1219	AP5	N3B-C2B-N1B	-11.01	119.50	128.71
4	A	1218	AP5	N3B-C2B-N1B	-10.80	119.68	128.71
4	A	1218	AP5	N3A-C2A-N1A	-10.27	120.12	128.71
4	B	1219	AP5	N3A-C2A-N1A	-10.04	120.31	128.71
4	B	1219	AP5	O3D-PD-O3G	7.58	117.08	101.66
4	A	1218	AP5	O3D-PD-O3G	7.10	116.10	101.66
4	A	1218	AP5	N3B-C4B-N9B	6.37	136.93	125.43
4	B	1219	AP5	N3B-C4B-N9B	6.30	136.81	125.43
4	A	1218	AP5	N3A-C4A-N9A	5.82	135.93	125.43
4	B	1219	AP5	N3A-C4A-N9A	5.34	135.08	125.43
4	B	1219	AP5	C4J-O4J-C1J	3.75	113.82	109.75
4	A	1218	AP5	PB-O3A-PA	3.49	141.93	131.68
4	A	1218	AP5	C4J-O4J-C1J	3.43	113.47	109.75
4	A	1218	AP5	C5A-C4A-N3A	-3.37	118.36	125.70
4	B	1219	AP5	O3G-PG-O3B	3.36	108.49	101.66
4	B	1219	AP5	C8B-N9B-C4B	3.36	109.46	106.90
4	A	1218	AP5	C8B-N9B-C4B	3.35	109.46	106.90
4	A	1218	AP5	O3G-PG-O3B	3.30	108.38	101.66
4	B	1219	AP5	C5A-C4A-N3A	-3.17	118.79	125.70
4	B	1219	AP5	PB-O3A-PA	3.02	140.53	131.68
4	A	1218	AP5	C5B-C4B-N3B	-3.01	119.14	125.70
4	B	1219	AP5	C5B-C4B-N3B	-3.01	119.15	125.70
4	B	1219	AP5	O2B-PB-O3B	2.90	118.91	105.14
4	A	1218	AP5	O2B-PB-O3B	2.88	118.78	105.14
4	B	1219	AP5	C2A-N1A-C6A	2.76	123.75	118.77
4	B	1219	AP5	C2B-N3B-C4B	2.70	121.70	114.01
4	A	1218	AP5	C2B-N3B-C4B	2.69	121.68	114.01
4	B	1219	AP5	O3B-PB-O3A	-2.69	96.19	101.66
4	B	1219	AP5	C3J-C2J-C1J	2.68	105.11	100.91

*Continued on next page...*

*Continued from previous page...*

Mol	Chain	Res	Type	Atoms	Z	Observed(°)	Ideal(°)
4	A	1218	AP5	C6A-C5A-C4A	2.68	122.17	117.25
4	B	1219	AP5	C5B-C6B-N6B	2.63	126.66	120.72
4	B	1219	AP5	C2B-N1B-C6B	2.59	123.44	118.77
4	A	1218	AP5	O3B-PB-O3A	-2.52	96.55	101.66
4	A	1218	AP5	C2A-N1A-C6A	2.51	123.31	118.77
4	B	1219	AP5	C4F-O4F-C1F	2.50	112.46	109.75
4	A	1218	AP5	C2A-N3A-C4A	2.49	121.10	114.01
4	B	1219	AP5	C1F-N9A-C4A	-2.46	122.38	126.64
4	A	1218	AP5	C3J-C2J-C1J	2.43	104.71	100.91
4	B	1219	AP5	C6A-C5A-C4A	2.41	121.67	117.25
4	A	1218	AP5	C4F-O4F-C1F	2.38	112.34	109.75
4	A	1218	AP5	C5B-C6B-N6B	2.38	126.11	120.72
4	B	1219	AP5	C2A-N3A-C4A	2.33	120.66	114.01
4	A	1218	AP5	C2B-N1B-C6B	2.26	122.86	118.77
4	A	1218	AP5	C5B-C4B-N9B	-2.24	103.92	107.16
4	B	1219	AP5	C5B-C4B-N9B	-2.16	104.04	107.16
4	B	1219	AP5	C8A-N9A-C1F	2.05	130.42	126.38
4	B	1219	AP5	O4F-C1F-N9A	-2.05	106.54	108.44
4	A	1218	AP5	O2E-PE-O3D	2.01	114.66	105.14

There are no chirality outliers.

There are no torsion outliers.

There are no ring outliers.

## 5.7 Other polymers ⓘ

There are no such residues in this entry.

## 5.8 Polymer linkage issues

There are no chain breaks in this entry.

## 6 Fit of model and data ⓘ

### 6.1 Protein, DNA and RNA chains ⓘ

In the following table, the column labelled ‘#RSRZ> 2’ contains the number (and percentage) of RSRZ outliers, followed by percent RSRZ outliers for the chain as percentile scores relative to all X-ray entries and entries of similar resolution. The OWAB column contains the minimum, median, 95<sup>th</sup> percentile and maximum values of the occupancy-weighted average B-factor per residue. The column labelled ‘Q< 0.9’ lists the number of (and percentage) of residues with an average occupancy less than 0.9.

Mol	Chain	Analysed	<RSRZ>	#RSRZ>2	OWAB(Å <sup>2</sup> )	Q<0.9
1	A	216/216 (100%)	0.14	5 (2%) 57 51	15, 24, 35, 44	0
1	B	216/216 (100%)	0.17	0 100 100	17, 27, 36, 42	0
All	All	432/432 (100%)	0.16	5 (1%) 77 72	15, 25, 36, 44	0

All (5) RSRZ outliers are listed below:

Mol	Chain	Res	Type	RSRZ
1	A	116	ASP	3.0
1	A	216	LYS	2.6
1	A	104	GLY	2.4
1	A	5	LEU	2.3
1	A	214	GLY	2.2

### 6.2 Non-standard residues in protein, DNA, RNA chains ⓘ

There are no non-standard protein/DNA/RNA residues in this entry.

### 6.3 Carbohydrates ⓘ

There are no carbohydrates in this entry.

### 6.4 Ligands ⓘ

In the following table, the Atoms column lists the number of modelled atoms in the group and the number defined in the chemical component dictionary. LLDF column lists the quality of electron density of the group with respect to its neighbouring residues in protein, DNA or RNA chains. The B-factors column lists the minimum, median, 95<sup>th</sup> percentile and maximum values of B factors of atoms in the group. The column labelled ‘Q< 0.9’ lists the number of atoms with occupancy less than 0.9.



Mol	Type	Chain	Res	Atoms	RSR	LLDF	B-factors( $\text{\AA}^2$ )	Q<0.9
3	MG	B	1222	1/1	0.21	5.12	16,16,16,16	0
3	MG	A	1223	1/1	0.20	3.05	16,16,16,16	0
4	AP5	A	1218	57/57	0.12	0.05	15,20,23,25	0
4	AP5	B	1219	57/57	0.10	-0.50	17,21,26,28	0
2	ZN	B	1221	1/1	0.03	-2.60	37,37,37,37	0
2	ZN	A	1220	1/1	0.06	-2.92	27,27,27,27	0

## 6.5 Other polymers ⓘ

There are no such residues in this entry.