



# wwPDB X-ray Structure Validation Summary Report

Feb 26, 2014 – 10:47 PM GMT

PDB ID : 2OVW  
Title : ENDOGLUCANASE I COMPLEXED WITH CELLOBIOSE  
Authors : Sulzenbacher, G.; Davies, G.J.; Schulein, M.  
Deposited on : 1997-04-04  
Resolution : 2.30 Å(reported)

This is a wwPDB validation summary report for a publicly released PDB entry.

We welcome your comments at [validation@mail.wwpdb.org](mailto:validation@mail.wwpdb.org)

A user guide is available at <http://wwpdb.org/ValidationPDFNotes.html>

---

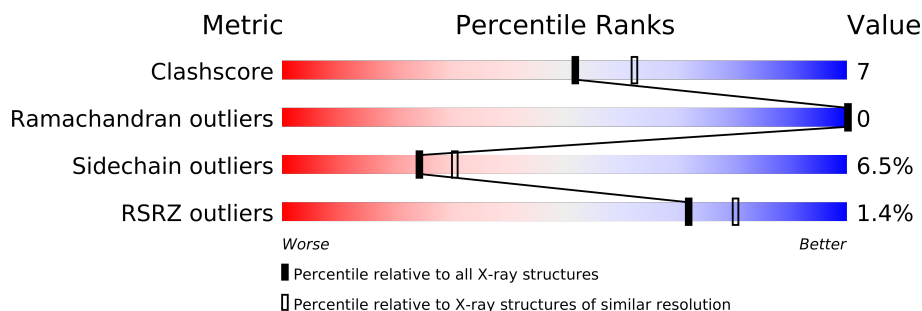
The following versions of software and data (see [references](#)) were used in the production of this report:

MolProbity : 4.02b-467  
Mogul : 1.15 2013  
Xtriage (Phenix) : dev-1323  
EDS : stable22639  
Percentile statistics : 21963  
Refmac : 5.8.0049  
CCP4 : 6.3.0 (Settle)  
Ideal geometry (proteins) : Engh & Huber (2001)  
Ideal geometry (DNA, RNA) : Parkinson et. al. (1996)  
Validation Pipeline (wwPDB-VP) : stable22683

# 1 Overall quality at a glance

The reported resolution of this entry is 2.30 Å.

Percentile scores (ranging between 0-100) for global validation metrics of the entry are shown in the following graphic. The table shows the number of entries on which the scores are based.



Metric	Whole archive (#Entries)	Similar resolution (#Entries, resolution range(Å))
Clashscore	79885	3679 (2.30-2.30)
Ramachandran outliers	78287	3642 (2.30-2.30)
Sidechain outliers	78261	3641 (2.30-2.30)
RSRZ outliers	66119	2930 (2.30-2.30)

The table below summarises the geometric issues observed across the polymeric chains and their fit to the electron density. The red, orange, yellow and green segments on the lower bar indicate the fraction of residues that contain outliers for  $\geq 3$ , 2, 1 and 0 types of geometric quality criteria. The upper red bar (where present) indicates the fraction of residues that have poor fit to the electron density.

Mol	Chain	Length	Quality of chain
1	A	411	
1	B	411	
1	C	411	
1	D	411	

The following table lists non-polymeric compounds that are outliers for geometric or electron-density-fit criteria:

Mol	Type	Chain	Res	Geometry	Electron density
2	NAG	B	413	-	X

## 2 Entry composition i

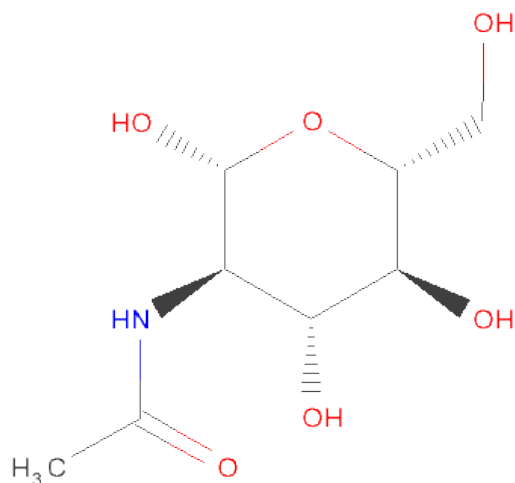
There are 4 unique types of molecules in this entry. The entry contains 13393 atoms, of which 0 are hydrogen and 0 are deuterium.

In the tables below, the ZeroOcc column contains the number of atoms modelled with zero occupancy, the AltConf column contains the number of residues with at least one atom in alternate conformation and the Trace column contains the number of residues modelled with at most 2 atoms.

- Molecule 1 is a protein called ENDOGLUCANASE I.

Mol	Chain	Residues	Atoms					ZeroOcc	AltConf	Trace
1	A	398	Total	C	N	O	S	0	0	0
			3022	1870	534	589	29			
1	B	398	Total	C	N	O	S	0	0	0
			3022	1870	534	589	29			
1	C	398	Total	C	N	O	S	0	0	0
			3022	1870	534	589	29			
1	D	398	Total	C	N	O	S	0	0	0
			3022	1870	534	589	29			

- Molecule 2 is SUGAR (N-ACETYL-D-GLUCOSAMINE) (three-letter code: NAG) (formula:  $C_8H_{15}NO_6$ ).



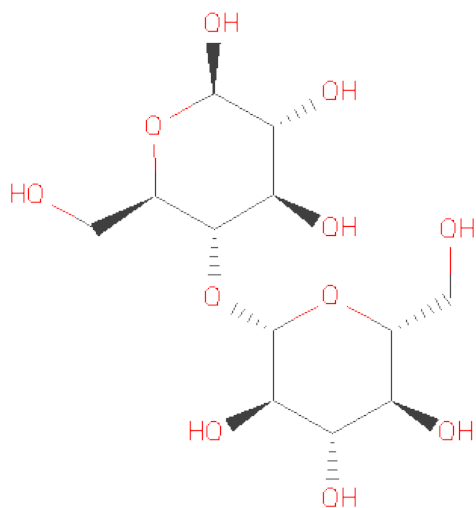
Mol	Chain	Residues	Atoms				ZeroOcc	AltConf
2	A	1	Total	C	N	O	0	0
			14	8	1	5		
2	A	1	Total	C	N	O	0	0
			14	8	1	5		

*Continued on next page...*

Continued from previous page...

Mol	Chain	Residues	Atoms				ZeroOcc	AltConf
2	B	1	Total	C	N	O	0	0
			14	8	1	5		
2	B	1	Total	C	N	O	0	0
			14	8	1	5		
2	C	1	Total	C	N	O	0	0
			14	8	1	5		
2	C	1	Total	C	N	O	0	0
			14	8	1	5		
2	D	1	Total	C	N	O	0	0
			14	8	1	5		
2	D	1	Total	C	N	O	0	0
			14	8	1	5		

- Molecule 3 is SUGAR (LACTOSE) (three-letter code: CBI) (formula:  $C_{12}H_{22}O_{11}$ ).



Mol	Chain	Residues	Atoms			ZeroOcc	AltConf
3	A	1	Total	C	O	0	0
			23	12	11		
3	B	1	Total	C	O	0	0
			23	12	11		
3	C	1	Total	C	O	0	0
			23	12	11		
3	D	1	Total	C	O	0	0
			23	12	11		

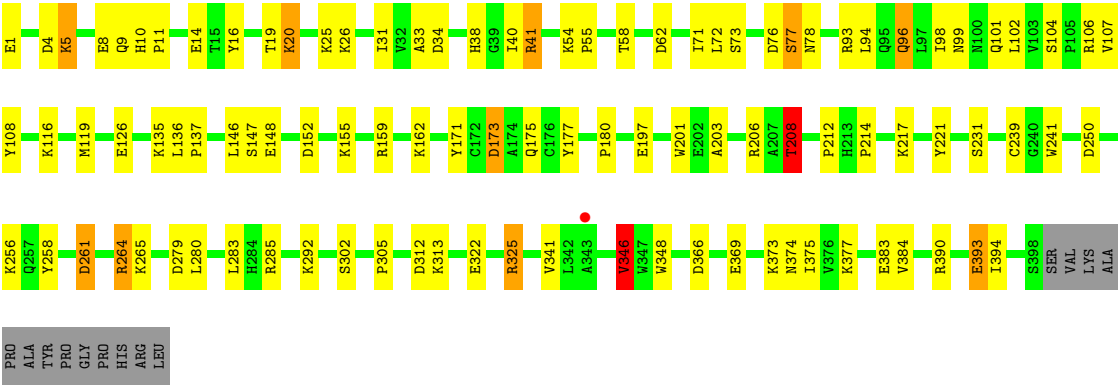
- Molecule 4 is water.

Mol	Chain	Residues	Atoms		ZeroOcc	AltConf
4	A	277	Total 277	O 277	0	0
4	B	268	Total 268	O 268	0	0
4	C	268	Total 268	O 268	0	0
4	D	288	Total 288	O 288	0	0



● Molecule 1: ENDOGLUCANASE I

Chain D: 



## 4 Data and refinement statistics

Property	Value	Source
Space group	P 1 21 1	Depositor
Cell constants a, b, c, $\alpha$ , $\beta$ , $\gamma$	67.93Å 78.31Å 142.47Å 90.00° 96.98° 90.00°	Depositor
Resolution (Å)	15.00 – 2.30 29.84 – 2.30	Depositor EDS
% Data completeness (in resolution range)	86.4 (15.00-2.30) 86.5 (29.84-2.30)	Depositor EDS
$R_{merge}$	0.08	Depositor
$R_{sym}$	(Not available)	Depositor
$\langle I/\sigma(I) \rangle$ <sup>1</sup>	2.29 (at 2.31Å)	Xtriage
Refinement program	REFMAC	Depositor
R, $R_{free}$	0.209 , (Not available) 0.196 , (Not available)	Depositor DCC
$R_{free}$ test set	No test flags present.	DCC
Wilson B-factor (Å <sup>2</sup> )	23.4	Xtriage
Anisotropy	0.487	Xtriage
Bulk solvent $k_{sol}$ (e/Å <sup>3</sup> ), $B_{sol}$ (Å <sup>2</sup> )	0.36 , 44.4	EDS
Estimated twinning fraction	No twinning to report.	Xtriage
L-test for twinning	$\langle  L  \rangle = 0.49$ , $\langle L^2 \rangle = 0.33$	Xtriage
Outliers	0 of 57187 reflections	Xtriage
$F_o, F_c$ correlation	0.94	EDS
Total number of atoms	13393	wwPDB-VP
Average B, all atoms (Å <sup>2</sup> )	28.0	wwPDB-VP

Xtriage's analysis on translational NCS is as follows: *The largest off-origin peak in the Patterson function is 15.25% of the height of the origin peak. No significant pseudotranslation is detected.*

<sup>1</sup>Intensities estimated from amplitudes.

## 5 Model quality

### 5.1 Standard geometry

Bond lengths and bond angles in the following residue types are not validated in this section: PCA, NAG, CBI

The Z score for a bond length (or angle) is the number of standard deviations the observed value is removed from the expected value. A bond length (or angle) with  $|Z| > 5$  is considered an outlier worth inspection. RMSZ is the root-mean-square of all Z scores of the bond lengths (or angles).

Mol	Chain	Bond lengths		Bond angles	
		RMSZ	$\# Z  > 5$	RMSZ	$\# Z  > 5$
1	A	0.68	0/3076	1.58	41/4155 (1.0%)
1	B	0.68	0/3076	1.59	40/4155 (1.0%)
1	C	0.70	0/3076	1.57	34/4155 (0.8%)
1	D	0.69	0/3076	1.59	44/4155 (1.1%)
All	All	0.69	0/12304	1.58	159/16620 (1.0%)

Chiral center outliers are detected by calculating the chiral volume of a chiral center and verifying if the center is modelled as a planar moiety or with the opposite hand. A planarity outlier is detected by checking planarity of atoms in a peptide group, atoms in a mainchain group or atoms of a sidechain that are expected to be planar.

Mol	Chain	#Chirality outliers	#Planarity outliers
1	A	0	1
1	B	0	1
1	C	0	1
1	D	0	1
All	All	0	4

There are no bond length outliers.

The worst 5 of 159 bond angle outliers are listed below:

Mol	Chain	Res	Type	Atoms	Z	Observed(°)	Ideal(°)
1	D	325	ARG	NE-CZ-NH1	18.48	129.54	120.30
1	A	325	ARG	NE-CZ-NH1	16.49	128.55	120.30
1	C	264	ARG	CD-NE-CZ	15.53	145.34	123.60
1	C	325	ARG	CD-NE-CZ	15.48	145.27	123.60
1	C	325	ARG	NE-CZ-NH1	15.23	127.91	120.30

There are no chirality outliers.

All (4) planarity outliers are listed below:

Mol	Chain	Res	Type	Group
1	A	1	PCA	Mainchain
1	B	1	PCA	Mainchain
1	C	1	PCA	Mainchain
1	D	1	PCA	Mainchain

## 5.2 Close contacts ⓘ

In the following table, the Non-H and H(model) columns list the number of non-hydrogen atoms and hydrogen atoms in the chain respectively. The H(added) column lists the number of hydrogens added by MolProbity. The Clashes column lists the number of clashes within the asymmetric unit, and the number in parentheses is this value normalized per 1000 atoms of the molecule in the chain. The Symm-Clashes column gives symmetry related clashes, in the same way as for the Clashes column.

Mol	Chain	Non-H	H(model)	H(added)	Clashes	Symm-Clashes
1	A	3022	0	2905	36	1
1	B	3022	0	2905	42	1
1	C	3022	0	2905	49	0
1	D	3022	0	2905	47	0
2	A	28	0	26	0	0
2	B	28	0	26	0	0
2	C	28	0	26	0	0
2	D	28	0	26	0	0
3	A	23	0	22	1	0
3	B	23	0	22	1	0
3	C	23	0	22	1	0
3	D	23	0	22	2	0
4	A	277	0	0	2	0
4	B	268	0	0	4	0
4	C	268	0	0	4	0
4	D	288	0	0	5	0
All	All	13393	0	11812	173	1

Clashscore is defined as the number of clashes calculated for the entry per 1000 atoms (including hydrogens) of the entry. The overall clashscore for this entry is 7.

The worst 5 of 173 close contacts within the same asymmetric unit are listed below.

Atom-1	Atom-2	Distance(Å)	Clash(Å)
1:B:203:ALA:HB2	1:B:208:THR:HG23	1.42	1.00
1:C:203:ALA:HB2	1:C:208:THR:HG23	1.47	0.95
1:D:203:ALA:HB2	1:D:208:THR:HG23	1.48	0.94
1:C:5:LYS:HE2	1:C:5:LYS:H	1.34	0.93

*Continued on next page...*

*Continued from previous page...*

Atom-1	Atom-2	Distance(Å)	Clash(Å)
1:B:5:LYS:HE2	1:B:5:LYS:H	1.35	0.91

All (1) symmetry-related close contacts are listed below. The label for Atom-2 includes the symmetry operator and encoded unit-cell translations to be applied.

Atom-1	Atom-2	Distance(Å)	Clash(Å)
1:A:290:ASP:O	1:B:321:ASN:ND2[2_656]	2.09	0.11

## 5.3 Torsion angles

### 5.3.1 Protein backbone ⓘ

In the following table, the Percentiles column shows the percent Ramachandran outliers of the chain as a percentile score with respect to all X-ray entries followed by that with respect to entries of similar resolution. The Analysed column shows the number of residues for which the backbone conformation was analysed, and the total number of residues.

Mol	Chain	Analysed	Favoured	Allowed	Outliers	Percentiles	
1	A	396/411 (96%)	381 (96%)	15 (4%)	0	100	100
1	B	396/411 (96%)	381 (96%)	15 (4%)	0	100	100
1	C	396/411 (96%)	382 (96%)	14 (4%)	0	100	100
1	D	396/411 (96%)	382 (96%)	14 (4%)	0	100	100
All	All	1584/1644 (96%)	1526 (96%)	58 (4%)	0	100	100

There are no Ramachandran outliers to report.

### 5.3.2 Protein sidechains ⓘ

In the following table, the Percentiles column shows the percent sidechain outliers of the chain as a percentile score with respect to all X-ray entries followed by that with respect to entries of similar resolution. The Analysed column shows the number of residues for which the sidechain conformation was analysed, and the total number of residues.

Mol	Chain	Analysed	Rotameric	Outliers	Percentiles	
1	A	323/333 (97%)	303 (94%)	20 (6%)	26	33
1	B	323/333 (97%)	302 (94%)	21 (6%)	24	30
1	C	323/333 (97%)	300 (93%)	23 (7%)	21	26
1	D	323/333 (97%)	303 (94%)	20 (6%)	26	33

*Continued on next page...*

*Continued from previous page...*

Mol	Chain	Analysed	Rotameric	Outliers	Percentiles	
All	All	1292/1332 (97%)	1208 (94%)	84 (6%)	24	30

5 of 84 residues with a non-rotameric sidechain are listed below:

Mol	Chain	Res	Type
1	B	292	LYS
1	C	96	GLN
1	D	231	SER
1	B	346	VAL
1	C	20	LYS

Some sidechains can be flipped to improve hydrogen bonding and reduce clashes. 5 of 6 such sidechains are listed below:

Mol	Chain	Res	Type
1	B	331	GLN
1	D	96	GLN
1	C	96	GLN
1	B	96	GLN
1	C	277	GLN

### 5.3.3 RNA ⓘ

There are no RNA chains in this entry.

## 5.4 Non-standard residues in protein, DNA, RNA chains ⓘ

4 non-standard protein/DNA/RNA residues are modelled in this entry.

In the following table, the Counts columns list the number of bonds (or angles) for which Mogul statistics could be retrieved, the number of bonds (or angles) that are observed in the model and the number of bonds (or angles) that are defined in the chemical component dictionary. The Link column lists molecule types, if any, to which the group is linked. The Z score for a bond length (or angle) is the number of standard deviations the observed value is removed from the expected value. A bond length (or angle) with  $|Z| > 2$  is considered an outlier worth inspection. RMSZ is the root-mean-square of all Z scores of the bond lengths (or angles).

Mol	Type	Chain	Res	Link	Bond lengths			Bond angles		
					Counts	RMSZ	$\# Z  > 2$	Counts	RMSZ	$\# Z  > 2$
1	PCA	A	1	1	8,8,9	8.81	2 (25%)	8,10,12	4.85	4 (50%)
1	PCA	B	1	1	8,8,9	8.16	2 (25%)	8,10,12	3.71	4 (50%)

Mol	Type	Chain	Res	Link	Bond lengths			Bond angles		
					Counts	RMSZ	# Z  > 2	Counts	RMSZ	# Z  > 2
1	PCA	C	1	1	8,8,9	8.79	3 (37%)	8,10,12	7.56	4 (50%)
1	PCA	D	1	1	8,8,9	8.43	3 (37%)	8,10,12	4.52	3 (37%)

In the following table, the Chirals column lists the number of chiral outliers, the number of chiral centers analysed, the number of these observed in the model and the number defined in the chemical component dictionary. Similar counts are reported in the Torsion and Rings columns. '-' means no outliers of that kind were identified.

Mol	Type	Chain	Res	Link	Chirals	Torsions	Rings
1	PCA	A	1	1	-	0/0/11/13	0/1/1/1
1	PCA	B	1	1	-	0/0/11/13	0/1/1/1
1	PCA	C	1	1	-	0/0/11/13	0/1/1/1
1	PCA	D	1	1	-	0/0/11/13	0/1/1/1

The worst 5 of 10 bond length outliers are listed below:

Mol	Chain	Res	Type	Atoms	Z	Observed(Å)	Ideal(Å)
1	C	1	PCA	O-C	24.43	1.28	1.11
1	A	1	PCA	O-C	24.43	1.28	1.11
1	D	1	PCA	O-C	23.22	1.27	1.11
1	B	1	PCA	O-C	22.58	1.27	1.11
1	A	1	PCA	CA-C	4.30	1.56	1.48

The worst 5 of 15 bond angle outliers are listed below:

Mol	Chain	Res	Type	Atoms	Z	Observed(°)	Ideal(°)
1	C	1	PCA	C-CA-N	15.26	114.16	110.71
1	C	1	PCA	CA-N-CD	-12.84	104.33	114.37
1	D	1	PCA	CA-N-CD	-11.35	105.50	114.37
1	A	1	PCA	CA-N-CD	-10.58	106.10	114.37
1	B	1	PCA	CA-N-CD	-8.60	107.65	114.37

There are no chirality outliers.

There are no torsion outliers.

There are no ring outliers.

## 5.5 Carbohydrates ⓘ

There are no carbohydrates in this entry.

## 5.6 Ligand geometry

12 ligands are modelled in this entry.

In the following table, the Counts columns list the number of bonds (or angles) for which Mogul statistics could be retrieved, the number of bonds (or angles) that are observed in the model and the number of bonds (or angles) that are defined in the chemical component dictionary. The Link column lists molecule types, if any, to which the group is linked. The Z score for a bond length (or angle) is the number of standard deviations the observed value is removed from the expected value. A bond length (or angle) with  $|Z| > 2$  is considered an outlier worth inspection. RMSZ is the root-mean-square of all Z scores of the bond lengths (or angles).

Mol	Type	Chain	Res	Link	Bond lengths			Bond angles		
					Counts	RMSZ	# $ Z  > 2$	Counts	RMSZ	# $ Z  > 2$
2	NAG	A	412	1	12,14,15	1.57	3 (25%)	15,19,21	1.63	5 (33%)
2	NAG	A	413	1	12,14,15	1.37	2 (16%)	15,19,21	1.66	4 (26%)
3	CBI	A	414	-	24,24,24	1.05	1 (4%)	35,35,35	1.48	4 (11%)
2	NAG	B	412	1	12,14,15	1.39	2 (16%)	15,19,21	1.30	2 (13%)
2	NAG	B	413	1	12,14,15	1.51	3 (25%)	15,19,21	1.70	4 (26%)
3	CBI	B	414	-	24,24,24	1.13	1 (4%)	35,35,35	1.50	5 (14%)
2	NAG	C	412	1	12,14,15	1.31	1 (8%)	15,19,21	1.54	2 (13%)
2	NAG	C	413	1	12,14,15	1.40	2 (16%)	15,19,21	1.38	2 (13%)
3	CBI	C	414	-	24,24,24	1.13	1 (4%)	35,35,35	1.46	4 (11%)
2	NAG	D	412	1	12,14,15	1.53	2 (16%)	15,19,21	1.35	3 (20%)
2	NAG	D	413	1	12,14,15	1.49	3 (25%)	15,19,21	1.81	5 (33%)
3	CBI	D	414	-	24,24,24	1.11	0	35,35,35	1.45	4 (11%)

In the following table, the Chirals column lists the number of chiral outliers, the number of chiral centers analysed, the number of these observed in the model and the number defined in the chemical component dictionary. Similar counts are reported in the Torsion and Rings columns. '-' means no outliers of that kind were identified.

Mol	Type	Chain	Res	Link	Chirals	Torsions	Rings
2	NAG	A	412	1	-	0/6/23/26	0/1/1/1
2	NAG	A	413	1	-	0/6/23/26	0/1/1/1
3	CBI	A	414	-	-	0/8/48/48	0/2/2/2
2	NAG	B	412	1	-	0/6/23/26	0/1/1/1
2	NAG	B	413	1	-	0/6/23/26	0/1/1/1
3	CBI	B	414	-	-	0/8/48/48	0/2/2/2
2	NAG	C	412	1	-	0/6/23/26	0/1/1/1
2	NAG	C	413	1	-	0/6/23/26	0/1/1/1
3	CBI	C	414	-	-	0/8/48/48	0/2/2/2
2	NAG	D	412	1	-	0/6/23/26	0/1/1/1

*Continued on next page...*

*Continued from previous page...*

Mol	Type	Chain	Res	Link	Chirals	Torsions	Rings
2	NAG	D	413	1	-	0/6/23/26	0/1/1/1
3	CBI	D	414	-	-	0/8/48/48	0/2/2/2

The worst 5 of 21 bond length outliers are listed below:

Mol	Chain	Res	Type	Atoms	Z	Observed(Å)	Ideal(Å)
2	A	413	NAG	O7-C7	-3.98	1.14	1.23
2	D	412	NAG	O7-C7	-3.79	1.14	1.23
2	A	412	NAG	O7-C7	-3.72	1.15	1.23
2	B	413	NAG	O7-C7	-3.58	1.15	1.23
2	B	412	NAG	O7-C7	-3.57	1.15	1.23

The worst 5 of 44 bond angle outliers are listed below:

Mol	Chain	Res	Type	Atoms	Z	Observed(°)	Ideal(°)
3	A	414	CBI	O3'-C3'-C2'	-4.37	100.55	110.35
3	C	414	CBI	O3'-C3'-C2'	-4.32	100.66	110.35
3	B	414	CBI	O3'-C3'-C2'	-4.28	100.76	110.35
3	D	414	CBI	O2-C2-C1	-4.16	100.96	110.04
2	C	412	NAG	O5-C5-C4	-4.13	105.42	110.65

There are no chirality outliers.

There are no torsion outliers.

There are no ring outliers.

## 5.7 Other polymers ⓘ

There are no such residues in this entry.

## 5.8 Polymer linkage issues

There are no chain breaks in this entry.

## 6 Fit of model and data ⓘ

### 6.1 Protein, DNA and RNA chains ⓘ

In the following table, the column labelled ‘#RSRZ > 2’ contains the number (and percentage) of RSRZ outliers, followed by percent RSRZ outliers for the chain as percentile scores relative to all X-ray entries and entries of similar resolution. The OWAB column contains the minimum, median, 95<sup>th</sup> percentile and maximum values of the occupancy-weighted average B-factor per residue. The column labelled ‘Q < 0.9’ lists the number of (and percentage) of residues with an average occupancy less than 0.9.

Mol	Chain	Analysed	<RSRZ>	#RSRZ>2	OWAB(Å <sup>2</sup> )	Q<0.9
1	A	398/411 (96%)	-0.27	2 (0%) 88 94	13, 26, 43, 52	0
1	B	398/411 (96%)	-0.03	12 (3%) 48 58	14, 27, 44, 51	0
1	C	398/411 (96%)	-0.14	7 (1%) 65 74	12, 27, 44, 53	0
1	D	398/411 (96%)	-0.30	1 (0%) 91 96	14, 25, 42, 51	0
All	All	1592/1644 (96%)	-0.19	22 (1%) 72 80	12, 26, 43, 53	0

The worst 5 of 22 RSRZ outliers are listed below:

Mol	Chain	Res	Type	RSRZ
1	A	159	ARG	3.1
1	B	99	ASN	3.0
1	B	203	ALA	2.9
1	B	367	ALA	2.9
1	B	398	SER	2.8

### 6.2 Non-standard residues in protein, DNA, RNA chains ⓘ

In the following table, the Atoms column lists the number of modelled atoms in the group and the number defined in the chemical component dictionary. LLDF column lists the quality of electron density of the group with respect to its neighbouring residues in protein, DNA or RNA chains. The B-factors column lists the minimum, median, 95<sup>th</sup> percentile and maximum values of B factors of atoms in the group. The column labelled ‘Q < 0.9’ lists the number of atoms with occupancy less than 0.9.

Mol	Type	Chain	Res	Atoms	RSR	LLDF	B-factors(Å <sup>2</sup> )	Q<0.9
1	PCA	C	1	8/9	0.10	0.01	27,29,31,33	0
1	PCA	A	1	8/9	0.09	-0.20	23,26,29,31	0
1	PCA	D	1	8/9	0.08	-0.83	23,26,27,28	0
1	PCA	B	1	8/9	0.08	-1.00	24,27,29,31	0

### 6.3 Carbohydrates ⓘ

There are no carbohydrates in this entry.

### 6.4 Ligands ⓘ

In the following table, the Atoms column lists the number of modelled atoms in the group and the number defined in the chemical component dictionary. LLDF column lists the quality of electron density of the group with respect to its neighbouring residues in protein, DNA or RNA chains. The B-factors column lists the minimum, median, 95<sup>th</sup> percentile and maximum values of B factors of atoms in the group. The column labelled 'Q< 0.9' lists the number of atoms with occupancy less than 0.9.

Mol	Type	Chain	Res	Atoms	RSR	LLDF	B-factors(Å <sup>2</sup> )	Q<0.9
2	NAG	B	413	14/15	0.25	3.24	59,61,63,63	0
2	NAG	D	413	14/15	0.22	1.87	57,59,62,62	0
2	NAG	A	412	14/15	0.23	1.63	53,55,56,56	0
2	NAG	D	412	14/15	0.20	1.50	52,54,57,57	0
3	CBI	C	414	23/23	0.19	1.06	28,35,39,43	0
3	CBI	A	414	23/23	0.17	0.99	28,34,39,43	0
2	NAG	A	413	14/15	0.20	0.90	56,59,62,62	0
2	NAG	C	413	14/15	0.17	0.75	56,58,59,61	0
3	CBI	D	414	23/23	0.16	0.38	26,34,39,43	0
3	CBI	B	414	23/23	0.16	0.34	28,34,38,43	0
2	NAG	B	412	14/15	0.21	0.02	52,54,55,56	0
2	NAG	C	412	14/15	0.15	-0.20	52,54,55,55	0

### 6.5 Other polymers ⓘ

There are no such residues in this entry.