



Full wwPDB X-ray Structure Validation Report

Feb 26, 2014 – 10:44 PM GMT

PDB ID : 2OVY
Title : Crystal structure of the catalytic domain of rat phosphodiesterase 10A
Authors : Pandit, J.; Marr, E.S.
Deposited on : 2007-02-15
Resolution : 1.80 Å(reported)

This is a full wwPDB validation report for a publicly released PDB entry.
We welcome your comments at validation@mail.wwpdb.org
A user guide is available at <http://wwpdb.org/ValidationPDFNotes.html>

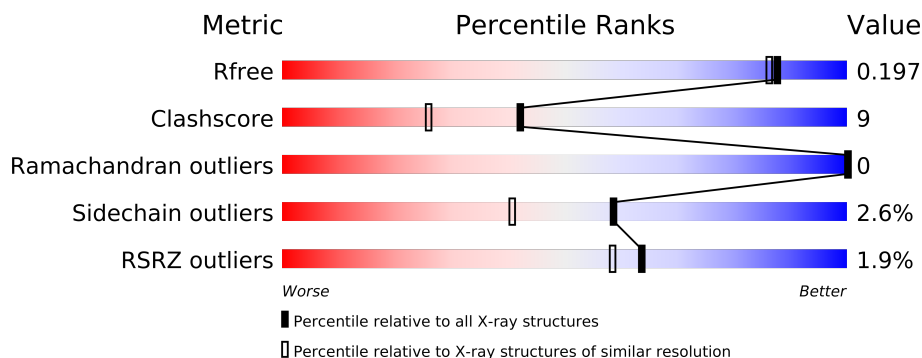
The following versions of software and data (see [references](#)) were used in the production of this report:

MolProbity : 4.02b-467
Mogul : 1.15 2013
Xtriage (Phenix) : dev-1323
EDS : stable22639
Percentile statistics : 21963
Refmac : 5.8.0049
CCP4 : 6.3.0 (Settle)
Ideal geometry (proteins) : Engh & Huber (2001)
Ideal geometry (DNA, RNA) : Parkinson et. al. (1996)
Validation Pipeline (wwPDB-VP) : stable22683

1 Overall quality at a glance

The reported resolution of this entry is 1.80 Å.

Percentile scores (ranging between 0-100) for global validation metrics of the entry are shown in the following graphic. The table shows the number of entries on which the scores are based.



Metric	Whole archive (#Entries)	Similar resolution (#Entries, resolution range(Å))
R_{free}	66092	3513 (1.80-1.80)
Clashscore	79885	4461 (1.80-1.80)
Ramachandran outliers	78287	4404 (1.80-1.80)
Sidechain outliers	78261	4403 (1.80-1.80)
RSRZ outliers	66119	3515 (1.80-1.80)

The table below summarises the geometric issues observed across the polymeric chains and their fit to the electron density. The red, orange, yellow and green segments on the lower bar indicate the fraction of residues that contain outliers for ≥ 3 , 2, 1 and 0 types of geometric quality criteria. The upper red bar (where present) indicates the fraction of residues that have poor fit to the electron density.

Mol	Chain	Length	Quality of chain
1	A	362	

2 Entry composition

There are 6 unique types of molecules in this entry. The entry contains 2864 atoms, of which 0 are hydrogen and 0 are deuterium.

In the tables below, the ZeroOcc column contains the number of atoms modelled with zero occupancy, the AltConf column contains the number of residues with at least one atom in alternate conformation and the Trace column contains the number of residues modelled with at most 2 atoms.

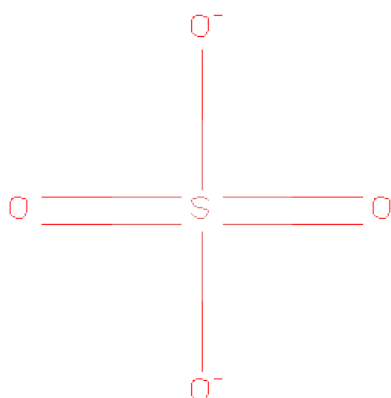
- Molecule 1 is a protein called Phosphodiesterase-10A.

Mol	Chain	Residues	Atoms					ZeroOcc	AltConf	Trace
			Total	C	N	O	S			
1	A	305	2488	1586	433	447	22	0	1	0

There are 19 discrepancies between the modelled and reference sequences:

Chain	Residue	Modelled	Actual	Comment	Reference
A	423	MET	-	EXPRESSION TAG	UNP Q9QYJ6
A	424	HIS	-	EXPRESSION TAG	UNP Q9QYJ6
A	425	HIS	-	EXPRESSION TAG	UNP Q9QYJ6
A	426	HIS	-	EXPRESSION TAG	UNP Q9QYJ6
A	427	HIS	-	EXPRESSION TAG	UNP Q9QYJ6
A	428	HIS	-	EXPRESSION TAG	UNP Q9QYJ6
A	429	HIS	-	EXPRESSION TAG	UNP Q9QYJ6
A	430	SER	-	EXPRESSION TAG	UNP Q9QYJ6
A	431	SER	-	EXPRESSION TAG	UNP Q9QYJ6
A	432	GLY	-	EXPRESSION TAG	UNP Q9QYJ6
A	433	LEU	-	EXPRESSION TAG	UNP Q9QYJ6
A	434	VAL	-	EXPRESSION TAG	UNP Q9QYJ6
A	435	PRO	-	EXPRESSION TAG	UNP Q9QYJ6
A	436	ARG	-	EXPRESSION TAG	UNP Q9QYJ6
A	437	GLY	-	EXPRESSION TAG	UNP Q9QYJ6
A	438	SER	-	EXPRESSION TAG	UNP Q9QYJ6
A	439	ALA	-	EXPRESSION TAG	UNP Q9QYJ6
A	440	MET	-	EXPRESSION TAG	UNP Q9QYJ6
A	441	GLY	-	EXPRESSION TAG	UNP Q9QYJ6

- Molecule 2 is SULFATE ION (three-letter code: SO4) (formula: O₄S).



Mol	Chain	Residues	Atoms			ZeroOcc	AltConf
2	A	1	Total	O	S	0	1
			10	8	2		

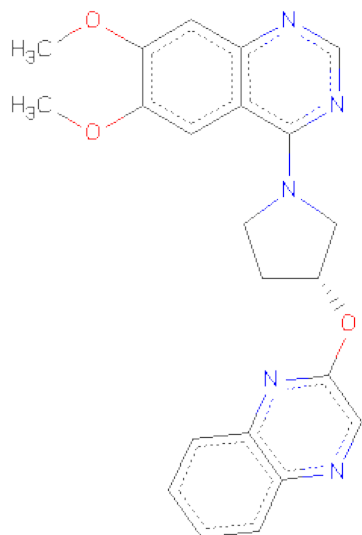
- Molecule 3 is ZINC ION (three-letter code: ZN) (formula: Zn).

Mol	Chain	Residues	Atoms		ZeroOcc	AltConf
3	A	1	Total	Zn	0	0
			1	1		

- Molecule 4 is MAGNESIUM ION (three-letter code: MG) (formula: Mg).

Mol	Chain	Residues	Atoms		ZeroOcc	AltConf
4	A	1	Total	Mg	0	0
			1	1		

- Molecule 5 is 6,7-DIMETHOXY-4-[(3R)-3-(QUINOXALIN-2-YLOXY)PYRROLIDIN-1-YL]QUINAZOLINE (three-letter code: PFJ) (formula: C₂₂H₂₁N₅O₃).



Mol	Chain	Residues	Atoms				ZeroOcc	AltConf
			Total	C	N	O		
5	A	1	30	22	5	3	0	0

- Molecule 6 is water.

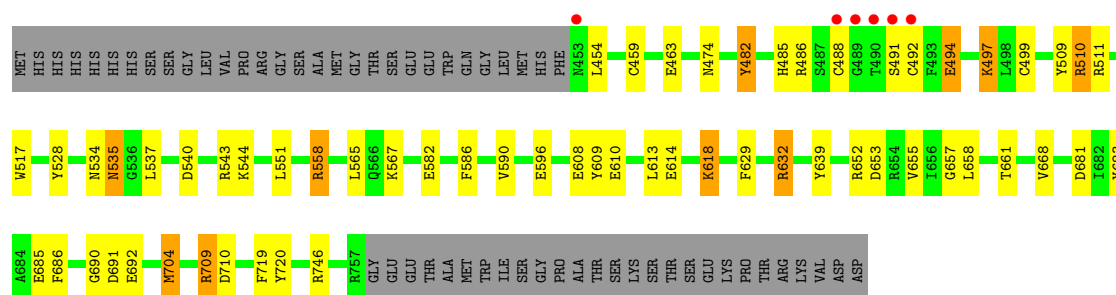
Mol	Chain	Residues	Atoms		ZeroOcc	AltConf
			Total	O		
6	A	334	334	334	0	0

3 Residue-property plots

These plots are drawn for all protein, RNA and DNA chains in the entry. The first graphic for a chain summarises the proportions of errors displayed in the second graphic. The second graphic shows the sequence view annotated by issues in geometry and electron density. Residues are color-coded according to the number of geometric quality criteria for which they contain at least one outlier: green = 0, yellow = 1, orange = 2 and red = 3 or more. A red dot above a residue indicates a poor fit to the electron density ($RSRZ > 2$). Stretches of 2 or more consecutive residues without any outlier are shown as a green connector. Residues present in the sample, but not in the model, are shown in grey.

- Molecule 1: Phosphodiesterase-10A

Chain A: 



4 Data and refinement statistics

Property	Value	Source
Space group	H 3	Depositor
Cell constants a, b, c, α , β , γ	120.80Å 120.80Å 83.50Å 90.00° 90.00° 120.00°	Depositor
Resolution (Å)	65.94 – 1.80 35.74 – 1.80	Depositor EDS
% Data completeness (in resolution range)	99.7 (65.94-1.80) 99.7 (35.74-1.80)	Depositor EDS
R_{merge}	0.06	Depositor
R_{sym}	(Not available)	Depositor
$\langle I/\sigma(I) \rangle$ ¹	3.79 (at 1.81Å)	Xtriage
Refinement program	REFMAC 5.2	Depositor
R, R_{free}	0.157 , 0.198 0.157 , 0.197	Depositor DCC
R_{free} test set	3228 reflections (8.33%)	DCC
Wilson B-factor (Å ²)	23.8	Xtriage
Anisotropy	0.006	Xtriage
Bulk solvent k_{sol} (e/Å ³), B_{sol} (Å ²)	0.39 , 46.7	EDS
Estimated twinning fraction	0.026 for h,-h-k,-l	Xtriage
L-test for twinning	$\langle L \rangle = 0.48$, $\langle L^2 \rangle = 0.30$	Xtriage
Outliers	0 of 41986 reflections	Xtriage
F_o, F_c correlation	0.97	EDS
Total number of atoms	2864	wwPDB-VP
Average B, all atoms (Å ²)	26.0	wwPDB-VP

Xtriage's analysis on translational NCS is as follows: *The largest off-origin peak in the Patterson function is 4.56% of the height of the origin peak. No significant pseudotranslation is detected.*

¹Intensities estimated from amplitudes.

5 Model quality ⓘ

5.1 Standard geometry ⓘ

Bond lengths and bond angles in the following residue types are not validated in this section: MG, PFJ, ZN, SO4

The Z score for a bond length (or angle) is the number of standard deviations the observed value is removed from the expected value. A bond length (or angle) with $|Z| > 5$ is considered an outlier worth inspection. RMSZ is the root-mean-square of all Z scores of the bond lengths (or angles).

Mol	Chain	Bond lengths		Bond angles	
		RMSZ	$\# Z > 5$	RMSZ	$\# Z > 5$
1	A	1.70	27/2549 (1.1%)	1.30	21/3451 (0.6%)

All (27) bond length outliers are listed below:

Mol	Chain	Res	Type	Atoms	Z	Observed(Å)	Ideal(Å)
1	A	720	TYR	CD1-CE1	9.69	1.53	1.39
1	A	610	GLU	CG-CD	9.45	1.66	1.51
1	A	629	PHE	CG-CD2	8.33	1.51	1.38
1	A	509	TYR	CD1-CE1	8.19	1.51	1.39
1	A	608	GLU	CD-OE2	7.81	1.34	1.25
1	A	582	GLU	CG-CD	7.56	1.63	1.51
1	A	685	GLU	CG-CD	6.75	1.62	1.51
1	A	618	LYS	CE-NZ	6.72	1.65	1.49
1	A	668	VAL	CB-CG2	6.62	1.66	1.52
1	A	528	TYR	CD2-CE2	6.57	1.49	1.39
1	A	463	GLU	CD-OE1	6.20	1.32	1.25
1	A	720	TYR	CD2-CE2	6.14	1.48	1.39
1	A	686	PHE	CD1-CE1	6.13	1.51	1.39
1	A	590	VAL	CB-CG1	5.99	1.65	1.52
1	A	551	LEU	CG-CD2	5.74	1.73	1.51
1	A	657	GLY	N-CA	5.74	1.54	1.46
1	A	692	GLU	CG-CD	5.74	1.60	1.51
1	A	683	TYR	CG-CD1	5.68	1.46	1.39
1	A	494	GLU	CB-CG	5.49	1.62	1.52
1	A	610	GLU	CD-OE1	5.44	1.31	1.25
1	A	596	GLU	CD-OE1	5.35	1.31	1.25
1	A	685	GLU	CB-CG	-5.33	1.42	1.52
1	A	482	TYR	CD2-CE2	5.24	1.47	1.39
1	A	629	PHE	CE2-CZ	5.18	1.47	1.37
1	A	655	VAL	CB-CG2	5.11	1.63	1.52
1	A	517	TRP	CE3-CZ3	5.10	1.47	1.38

Continued on next page...

Continued from previous page...

Mol	Chain	Res	Type	Atoms	Z	Observed(Å)	Ideal(Å)
1	A	586	PHE	CD1-CE1	5.03	1.49	1.39

All (21) bond angle outliers are listed below:

Mol	Chain	Res	Type	Atoms	Z	Observed(°)	Ideal(°)
1	A	746	ARG	NE-CZ-NH2	-9.51	115.54	120.30
1	A	652	ARG	NE-CZ-NH2	-9.38	115.61	120.30
1	A	719	PHE	CB-CG-CD1	-8.88	114.59	120.80
1	A	681	ASP	CB-CG-OD2	-8.30	110.83	118.30
1	A	653	ASP	CB-CG-OD2	-8.25	110.88	118.30
1	A	629	PHE	CB-CG-CD1	-7.32	115.67	120.80
1	A	565	LEU	CB-CG-CD2	-6.98	99.13	111.00
1	A	510	ARG	NE-CZ-NH1	-6.92	116.84	120.30
1	A	632	ARG	NE-CZ-NH2	-6.67	116.97	120.30
1	A	691	ASP	CB-CG-OD2	-6.61	112.36	118.30
1	A	661	THR	CA-CB-CG2	-6.28	103.60	112.40
1	A	567	LYS	CD-CE-NZ	-6.13	97.60	111.70
1	A	613	LEU	CB-CG-CD1	-6.06	100.70	111.00
1	A	691	ASP	CB-CG-OD1	5.69	123.42	118.30
1	A	632	ARG	NE-CZ-NH1	-5.61	117.49	120.30
1	A	632	ARG	NH1-CZ-NH2	5.51	125.46	119.40
1	A	528	TYR	CZ-CE2-CD2	-5.46	114.89	119.80
1	A	704	MET	CG-SD-CE	-5.44	91.49	100.20
1	A	653	ASP	OD1-CG-OD2	5.35	133.47	123.30
1	A	658	LEU	CB-CG-CD2	-5.28	102.03	111.00
1	A	609	TYR	CB-CG-CD1	-5.22	117.87	121.00

There are no chirality outliers.

There are no planarity outliers.

5.2 Close contacts ⓘ

In the following table, the Non-H and H(model) columns list the number of non-hydrogen atoms and hydrogen atoms in the chain respectively. The H(added) column lists the number of hydrogens added by MolProbity. The Clashes column lists the number of clashes within the asymmetric unit, and the number in parentheses is this value normalized per 1000 atoms of the molecule in the chain. The Symm-Clashes column gives symmetry related clashes, in the same way as for the Clashes column.

Mol	Chain	Non-H	H(model)	H(added)	Clashes	Symm-Clashes
1	A	2488	0	2458	39	0

Continued on next page...

Continued from previous page...

Mol	Chain	Non-H	H(model)	H(added)	Clashes	Symm-Clashes
2	A	10	0	0	3	0
3	A	1	0	0	0	0
4	A	1	0	0	0	0
5	A	30	0	21	3	0
6	A	334	0	0	14	1
All	All	2864	0	2479	45	1

Clashscore is defined as the number of clashes calculated for the entry per 1000 atoms (including hydrogens) of the entry. The overall clashscore for this entry is 9.

All (45) close contacts within the same asymmetric unit are listed below.

Atom-1	Atom-2	Distance(Å)	Clash(Å)
1:A:492:CYS:SG	1:A:544:LYS:HE2	1.53	1.46
1:A:492:CYS:SG	1:A:544:LYS:CE	2.23	1.25
1:A:710:ASP:HB2	6:A:317:HOH:O	1.39	1.20
1:A:459:CYS:HB3	6:A:322:HOH:O	1.01	1.18
1:A:558[A]:ARG:HH11	1:A:558[A]:ARG:HG2	1.13	1.05
2:A:997[B]:SO4:S	6:A:250:HOH:O	2.21	0.97
1:A:492:CYS:SG	1:A:544:LYS:CD	2.54	0.95
2:A:997[B]:SO4:O3	6:A:250:HOH:O	1.98	0.79
5:A:999:PFJ:H3	5:A:999:PFJ:C16	2.13	0.79
1:A:485:HIS:CD2	6:A:266:HOH:O	2.36	0.77
1:A:639:TYR:HB2	6:A:211:HOH:O	1.83	0.77
1:A:558[A]:ARG:CG	1:A:558[A]:ARG:HH11	1.97	0.76
5:A:999:PFJ:H3	5:A:999:PFJ:H162	1.67	0.76
1:A:497:LYS:NZ	6:A:280:HOH:O	2.20	0.73
1:A:558[A]:ARG:NH1	1:A:558[A]:ARG:HG2	1.92	0.73
2:A:997[B]:SO4:O2	6:A:250:HOH:O	2.08	0.70
1:A:492:CYS:SG	1:A:544:LYS:HD3	2.35	0.67
1:A:488:CYS:SG	1:A:544:LYS:HG3	2.36	0.65
1:A:491:SER:O	1:A:492:CYS:C	2.35	0.64
1:A:492:CYS:SG	1:A:544:LYS:CG	2.93	0.56
1:A:488:CYS:SG	1:A:544:LYS:CG	2.95	0.55
1:A:709:ARG:NH1	1:A:709:ARG:HG2	2.21	0.54
1:A:540:ASP:OD1	1:A:543:ARG:NH2	2.42	0.53
1:A:492:CYS:SG	1:A:544:LYS:HG2	2.47	0.53
1:A:535:ASN:HB2	6:A:254:HOH:O	2.08	0.53
1:A:558[A]:ARG:NH1	1:A:558[A]:ARG:CG	2.62	0.53
5:A:999:PFJ:C3	5:A:999:PFJ:C16	2.86	0.52
1:A:499:CYS:HB3	6:A:220:HOH:O	2.09	0.52
1:A:511:ARG:HG2	1:A:511:ARG:HH11	1.75	0.51
1:A:482:TYR:CZ	1:A:486:ARG:HD2	2.46	0.51

Continued on next page...

Continued from previous page...

Atom-1	Atom-2	Distance(Å)	Clash(Å)
1:A:488:CYS:HA	6:A:252:HOH:O	2.09	0.51
1:A:488:CYS:HB3	1:A:544:LYS:HE2	1.95	0.49
1:A:488:CYS:HB3	1:A:544:LYS:CE	2.43	0.48
1:A:534:ASN:HB3	1:A:537:LEU:HD12	1.95	0.47
1:A:511:ARG:CG	1:A:511:ARG:HH11	2.27	0.47
1:A:510:ARG:NE	1:A:558[B]:ARG:HD2	2.30	0.46
1:A:709:ARG:HH11	1:A:709:ARG:HG2	1.81	0.45
1:A:459:CYS:CB	6:A:322:HOH:O	1.91	0.44
1:A:614:GLU:HG3	1:A:618:LYS:HE3	1.99	0.44
1:A:690:GLY:HA3	1:A:704:MET:O	2.18	0.43
1:A:488:CYS:CA	6:A:252:HOH:O	2.68	0.41
1:A:511:ARG:NH1	1:A:511:ARG:CG	2.83	0.41
1:A:454:LEU:HB2	1:A:459:CYS:SG	2.61	0.41
1:A:482:TYR:OH	1:A:486:ARG:HD2	2.20	0.41
1:A:558[A]:ARG:NH2	6:A:277:HOH:O	2.54	0.40

All (1) symmetry-related close contacts are listed below. The label for Atom-2 includes the symmetry operator and encoded unit-cell translations to be applied.

Atom-1	Atom-2	Distance(Å)	Clash(Å)
6:A:318:HOH:O	6:A:321:HOH:O[3_555]	2.17	0.03

5.3 Torsion angles

5.3.1 Protein backbone ⓘ

In the following table, the Percentiles column shows the percent Ramachandran outliers of the chain as a percentile score with respect to all X-ray entries followed by that with respect to entries of similar resolution. The Analysed column shows the number of residues for which the backbone conformation was analysed, and the total number of residues.

Mol	Chain	Analysed	Favoured	Allowed	Outliers	Percentiles	
1	A	304/362 (84%)	299 (98%)	5 (2%)	0	100	100

There are no Ramachandran outliers to report.

5.3.2 Protein sidechains ⓘ

In the following table, the Percentiles column shows the percent sidechain outliers of the chain as a percentile score with respect to all X-ray entries followed by that with respect to entries of

similar resolution. The Analysed column shows the number of residues for which the sidechain conformation was analysed, and the total number of residues.

Mol	Chain	Analysed	Rotameric	Outliers	Percentiles	
1	A	275/322 (85%)	267 (97%)	8 (3%)	55	37

All (8) residues with a non-rotameric sidechain are listed below:

Mol	Chain	Res	Type
1	A	474	ASN
1	A	494	GLU
1	A	497	LYS
1	A	535	ASN
1	A	558[A]	ARG
1	A	558[B]	ARG
1	A	632	ARG
1	A	709	ARG

Some sidechains can be flipped to improve hydrogen bonding and reduce clashes. All (2) such sidechains are listed below:

Mol	Chain	Res	Type
1	A	474	ASN
1	A	748	ASN

5.3.3 RNA ⓘ

There are no RNA chains in this entry.

5.4 Non-standard residues in protein, DNA, RNA chains ⓘ

There are no non-standard protein/DNA/RNA residues in this entry.

5.5 Carbohydrates ⓘ

There are no carbohydrates in this entry.

5.6 Ligand geometry ⓘ

Of 5 ligands modelled in this entry, 2 are monoatomic - leaving 3 for Mogul analysis.

In the following table, the Counts columns list the number of bonds (or angles) for which Mogul statistics could be retrieved, the number of bonds (or angles) that are observed in the model and the number of bonds (or angles) that are defined in the chemical component dictionary. The Link column lists molecule types, if any, to which the group is linked. The Z score for a bond length (or angle) is the number of standard deviations the observed value is removed from the expected value. A bond length (or angle) with $|Z| > 2$ is considered an outlier worth inspection. RMSZ is the root-mean-square of all Z scores of the bond lengths (or angles).

Mol	Type	Chain	Res	Link	Bond lengths			Bond angles		
					Counts	RMSZ	# $ Z > 2$	Counts	RMSZ	# $ Z > 2$
2	SO4	A	997[A]	-	4,4,4	0.77	0	6,6,6	0.70	0
2	SO4	A	997[B]	-	4,4,4	2.44	2 (50%)	6,6,6	1.23	0
5	PFJ	A	999	-	34,34,34	1.90	7 (20%)	48,48,48	3.55	24 (50%)

In the following table, the Chirals column lists the number of chiral outliers, the number of chiral centers analysed, the number of these observed in the model and the number defined in the chemical component dictionary. Similar counts are reported in the Torsion and Rings columns. '-' means no outliers of that kind were identified.

Mol	Type	Chain	Res	Link	Chirals	Torsions	Rings
2	SO4	A	997[A]	-	-	0/0/0/0	0/0/0/0
2	SO4	A	997[B]	-	-	0/0/0/0	0/0/0/0
5	PFJ	A	999	-	-	0/12/21/21	0/1/5/5

All (9) bond length outliers are listed below:

Mol	Chain	Res	Type	Atoms	Z	Observed(Å)	Ideal(Å)
5	A	999	PFJ	C21-N24	5.16	1.38	1.30
5	A	999	PFJ	C6-C5	-4.50	1.35	1.42
2	A	997[B]	SO4	O4-S	4.43	1.62	1.47
5	A	999	PFJ	C3-C2	4.30	1.44	1.36
5	A	999	PFJ	O13-C2	3.81	1.43	1.37
5	A	999	PFJ	C4-C1	2.41	1.41	1.36
5	A	999	PFJ	C7-C6	-2.14	1.39	1.43
5	A	999	PFJ	C22-N23	2.10	1.35	1.31
2	A	997[B]	SO4	O3-S	-2.01	1.40	1.47

All (24) bond angle outliers are listed below:

Mol	Chain	Res	Type	Atoms	Z	Observed(°)	Ideal(°)
5	A	999	PFJ	C21-N24-C25	12.85	123.98	115.68
5	A	999	PFJ	N10-C9-N8	-9.17	121.04	128.71
5	A	999	PFJ	C22-N23-C26	7.45	125.29	116.89
5	A	999	PFJ	C21-O20-C17	6.46	124.44	117.86

Continued on next page...

Continued from previous page...

Mol	Chain	Res	Type	Atoms	Z	Observed(°)	Ideal(°)
5	A	999	PFJ	C14-O13-C2	6.09	126.60	117.59
5	A	999	PFJ	C22-C21-N24	-5.31	119.16	123.13
5	A	999	PFJ	C9-N10-C5	4.22	118.64	115.37
5	A	999	PFJ	C9-N8-C7	4.10	120.41	111.53
5	A	999	PFJ	C3-C6-C7	-3.70	120.74	125.00
5	A	999	PFJ	C25-C26-N23	-3.26	117.92	120.97
5	A	999	PFJ	O13-C2-C3	3.09	129.14	125.25
5	A	999	PFJ	C30-C25-C26	2.85	123.06	119.30
5	A	999	PFJ	O20-C17-C16	2.83	118.13	109.70
5	A	999	PFJ	C12-O11-C1	2.83	121.78	117.59
5	A	999	PFJ	O11-C1-C4	-2.82	121.70	125.25
5	A	999	PFJ	O20-C21-C22	2.80	122.12	115.07
5	A	999	PFJ	C27-C26-N23	2.79	122.90	118.59
5	A	999	PFJ	C4-C5-C6	2.75	121.41	119.45
5	A	999	PFJ	C19-N15-C7	-2.74	115.73	123.58
5	A	999	PFJ	C26-C25-N24	-2.63	117.24	121.08
5	A	999	PFJ	C16-N15-C7	2.59	131.02	123.58
5	A	999	PFJ	C6-C7-N8	-2.44	118.17	123.51
5	A	999	PFJ	C7-C6-C5	2.13	119.63	117.54
5	A	999	PFJ	O13-C2-C1	-2.08	112.40	115.42

There are no chirality outliers.

There are no torsion outliers.

There are no ring outliers.

5.7 Other polymers ⓘ

There are no such residues in this entry.

5.8 Polymer linkage issues

There are no chain breaks in this entry.

6 Fit of model and data ⓘ

6.1 Protein, DNA and RNA chains ⓘ

In the following table, the column labelled ‘#RSRZ> 2’ contains the number (and percentage) of RSRZ outliers, followed by percent RSRZ outliers for the chain as percentile scores relative to all X-ray entries and entries of similar resolution. The OWAB column contains the minimum, median, 95th percentile and maximum values of the occupancy-weighted average B-factor per residue. The column labelled ‘Q< 0.9’ lists the number of (and percentage) of residues with an average occupancy less than 0.9.

Mol	Chain	Analysed	<RSRZ>	#RSRZ>2	OWAB(Å ²)	Q<0.9
1	A	305/362 (84%)	-0.27	6 (1%) 62 56	15, 23, 42, 71	0

All (6) RSRZ outliers are listed below:

Mol	Chain	Res	Type	RSRZ
1	A	492	CYS	4.8
1	A	453	ASN	4.7
1	A	488	CYS	4.6
1	A	490	THR	4.2
1	A	491	SER	3.6
1	A	489	GLY	3.2

6.2 Non-standard residues in protein, DNA, RNA chains ⓘ

There are no non-standard protein/DNA/RNA residues in this entry.

6.3 Carbohydrates ⓘ

There are no carbohydrates in this entry.

6.4 Ligands ⓘ

In the following table, the Atoms column lists the number of modelled atoms in the group and the number defined in the chemical component dictionary. LLDF column lists the quality of electron density of the group with respect to its neighbouring residues in protein, DNA or RNA chains. The B-factors column lists the minimum, median, 95th percentile and maximum values of B factors of atoms in the group. The column labelled ‘Q< 0.9’ lists the number of atoms with occupancy less than 0.9.

Mol	Type	Chain	Res	Atoms	RSR	LLDF	B-factors(\AA^2)	Q<0.9
2	SO4	A	997[A]	5/5	0.13	1.31	26,26,28,31	5
2	SO4	A	997[B]	5/5	0.13	1.06	18,22,29,31	5
5	PFJ	A	999	30/30	0.10	0.29	24,30,37,38	0
4	MG	A	9002	1/1	0.09	-0.28	20,20,20,20	0
3	ZN	A	9001	1/1	0.08	-2.33	18,18,18,18	0

6.5 Other polymers ⓘ

There are no such residues in this entry.