



Full wwPDB X-ray Structure Validation Report

Feb 27, 2014 – 03:46 PM GMT

PDB ID : 2P2F
Title : Acetyl-CoA Synthetase, wild-type with acetate, AMP, and CoA bound
Authors : Reger, A.S.; Gulick, A.M.
Deposited on : 2007-03-07
Resolution : 2.58 Å(reported)

This is a full wwPDB validation report for a publicly released PDB entry.
We welcome your comments at validation@mail.wwpdb.org
A user guide is available at <http://wwpdb.org/ValidationPDFNotes.html>

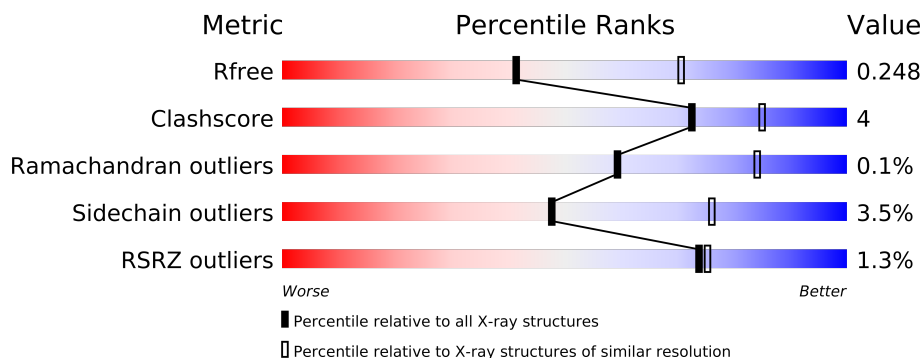
The following versions of software and data (see [references](#)) were used in the production of this report:

MolProbity : 4.02b-467
Mogul : 1.15 2013
Xtriage (Phenix) : dev-1323
EDS : stable22639
Percentile statistics : 21963
Refmac : 5.8.0049
CCP4 : 6.3.0 (Settle)
Ideal geometry (proteins) : Engh & Huber (2001)
Ideal geometry (DNA, RNA) : Parkinson et. al. (1996)
Validation Pipeline (wwPDB-VP) : stable22683

1 Overall quality at a glance

The reported resolution of this entry is 2.58 Å.

Percentile scores (ranging between 0-100) for global validation metrics of the entry are shown in the following graphic. The table shows the number of entries on which the scores are based.



Metric	Whole archive (#Entries)	Similar resolution (#Entries, resolution range(Å))
R_{free}	66092	1891 (2.60-2.56)
Clashscore	79885	2358 (2.60-2.56)
Ramachandran outliers	78287	2316 (2.60-2.56)
Sidechain outliers	78261	2316 (2.60-2.56)
RSRZ outliers	66119	1891 (2.60-2.56)

The table below summarises the geometric issues observed across the polymeric chains and their fit to the electron density. The red, orange, yellow and green segments on the lower bar indicate the fraction of residues that contain outliers for ≥ 3 , 2, 1 and 0 types of geometric quality criteria. The upper red bar (where present) indicates the fraction of residues that have poor fit to the electron density.

Mol	Chain	Length	Quality of chain
1	A	652	
1	B	652	

The following table lists non-polymeric compounds that are outliers for geometric or electron-density-fit criteria:

Mol	Type	Chain	Res	Geometry	Electron density
2	ACT	A	653	-	X
2	ACT	B	653	-	X
3	COA	A	990	-	X
3	COA	B	991	-	X

2 Entry composition i

There are 5 unique types of molecules in this entry. The entry contains 10137 atoms, of which 0 are hydrogen and 0 are deuterium.

In the tables below, the ZeroOcc column contains the number of atoms modelled with zero occupancy, the AltConf column contains the number of residues with at least one atom in alternate conformation and the Trace column contains the number of residues modelled with at most 2 atoms.

- Molecule 1 is a protein called Acetyl-coenzyme A synthetase.

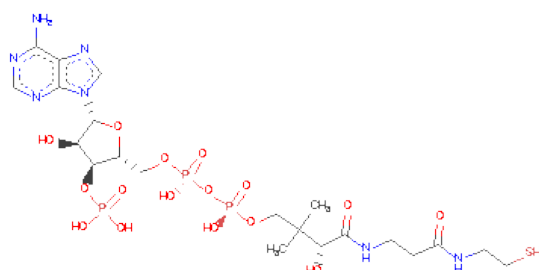
Mol	Chain	Residues	Atoms					ZeroOcc	AltConf	Trace
1	A	637	Total	C	N	O	S	0	0	0
			4926	3137	839	932	18			
1	B	632	Total	C	N	O	S	0	0	0
			4902	3120	842	922	18			

- Molecule 2 is ACETATE ION (three-letter code: ACT) (formula: $C_2H_3O_2$).



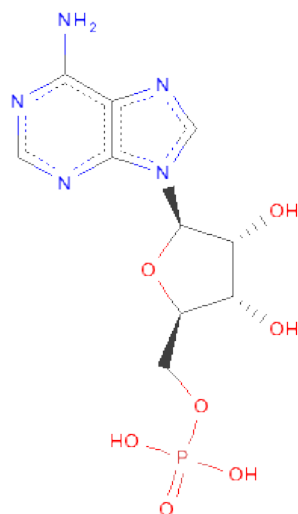
Mol	Chain	Residues	Atoms			ZeroOcc	AltConf
2	A	1	Total	C	O	0	0
			4	2	2		
2	B	1	Total	C	O	0	0
			4	2	2		

- Molecule 3 is COENZYME A (three-letter code: COA) (formula: $C_{21}H_{36}N_7O_{16}P_3S$).



Mol	Chain	Residues	Atoms						ZeroOcc	AltConf
3	A	1	Total	C	N	O	P	S	0	0
			48	21	7	16	3	1		
3	B	1	Total	C	N	O	P	S	0	0
			48	21	7	16	3	1		

- Molecule 4 is ADENOSINE MONOPHOSPHATE (three-letter code: AMP) (formula: $C_{10}H_{14}N_5O_7P$).



Mol	Chain	Residues	Atoms					ZeroOcc	AltConf
4	A	1	Total	C	N	O	P	0	0
			23	10	5	7	1		
4	B	1	Total	C	N	O	P	0	0
			23	10	5	7	1		

- Molecule 5 is water.

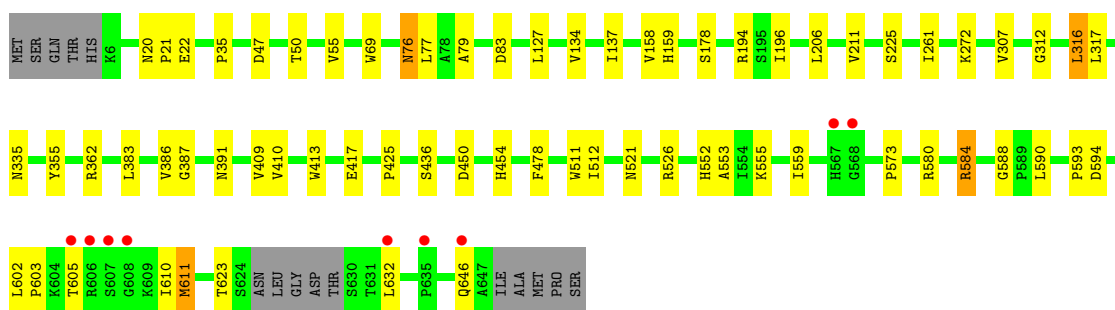
Mol	Chain	Residues	Atoms		ZeroOcc	AltConf
5	A	86	Total 86	O 86	0	0
5	B	73	Total 73	O 73	0	0

3 Residue-property plots

These plots are drawn for all protein, RNA and DNA chains in the entry. The first graphic for a chain summarises the proportions of errors displayed in the second graphic. The second graphic shows the sequence view annotated by issues in geometry and electron density. Residues are color-coded according to the number of geometric quality criteria for which they contain at least one outlier: green = 0, yellow = 1, orange = 2 and red = 3 or more. A red dot above a residue indicates a poor fit to the electron density ($RSRZ > 2$). Stretches of 2 or more consecutive residues without any outlier are shown as a green connector. Residues present in the sample, but not in the model, are shown in grey.

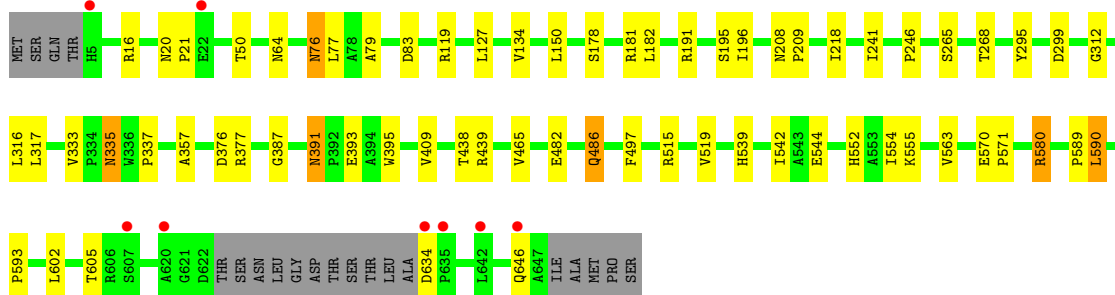
- Molecule 1: Acetyl-coenzyme A synthetase

Chain A: 



- Molecule 1: Acetyl-coenzyme A synthetase

Chain B: 



4 Data and refinement statistics

Property	Value	Source
Space group	P 21 21 21	Depositor
Cell constants a, b, c, α , β , γ	90.91Å 94.93Å 161.81Å 90.00° 90.00° 90.00°	Depositor
Resolution (Å)	81.65 – 2.58 24.73 – 2.58	Depositor EDS
% Data completeness (in resolution range)	99.0 (81.65-2.58) 99.1 (24.73-2.58)	Depositor EDS
R_{merge}	0.07	Depositor
R_{sym}	(Not available)	Depositor
$\langle I/\sigma(I) \rangle$ ¹	5.44 (at 2.57Å)	Xtriage
Refinement program	REFMAC 5.2.0005	Depositor
R, R_{free}	0.183 , 0.247 0.185 , 0.248	Depositor DCC
R_{free} test set	2261 reflections (5.37%)	DCC
Wilson B-factor (Å ²)	24.9	Xtriage
Anisotropy	0.308	Xtriage
Bulk solvent k_{sol} (e/Å ³), B_{sol} (Å ²)	0.35 , 8.8	EDS
Estimated twinning fraction	0.020 for k,h,-l	Xtriage
L-test for twinning	$\langle L \rangle = 0.49$, $\langle L^2 \rangle = 0.33$	Xtriage
Outliers	0 of 44340 reflections	Xtriage
F_o, F_c correlation	0.93	EDS
Total number of atoms	10137	wwPDB-VP
Average B, all atoms (Å ²)	18.0	wwPDB-VP

Xtriage's analysis on translational NCS is as follows: *The largest off-origin peak in the Patterson function is 3.10% of the height of the origin peak. No significant pseudotranslation is detected.*

¹Intensities estimated from amplitudes.

5 Model quality ⓘ

5.1 Standard geometry ⓘ

Bond lengths and bond angles in the following residue types are not validated in this section: COA, AMP, ACT

The Z score for a bond length (or angle) is the number of standard deviations the observed value is removed from the expected value. A bond length (or angle) with $|Z| > 5$ is considered an outlier worth inspection. RMSZ is the root-mean-square of all Z scores of the bond lengths (or angles).

Mol	Chain	Bond lengths		Bond angles	
		RMSZ	# Z >5	RMSZ	# Z >5
1	A	0.69	1/5057 (0.0%)	0.74	2/6902 (0.0%)
1	B	0.67	0/5034	0.72	0/6866
All	All	0.68	1/10091 (0.0%)	0.73	2/13768 (0.0%)

All (1) bond length outliers are listed below:

Mol	Chain	Res	Type	Atoms	Z	Observed(Å)	Ideal(Å)
1	A	22	GLU	CG-CD	5.52	1.60	1.51

All (2) bond angle outliers are listed below:

Mol	Chain	Res	Type	Atoms	Z	Observed(°)	Ideal(°)
1	A	47	ASP	CB-CG-OD2	5.38	123.14	118.30
1	A	590	LEU	CA-CB-CG	5.00	126.80	115.30

There are no chirality outliers.

There are no planarity outliers.

5.2 Close contacts ⓘ

In the following table, the Non-H and H(model) columns list the number of non-hydrogen atoms and hydrogen atoms in the chain respectively. The H(added) column lists the number of hydrogens added by MolProbity. The Clashes column lists the number of clashes within the asymmetric unit, and the number in parentheses is this value normalized per 1000 atoms of the molecule in the chain. The Symm-Clashes column gives symmetry related clashes, in the same way as for the Clashes column.

Mol	Chain	Non-H	H(model)	H(added)	Clashes	Symm-Clashes
1	A	4926	0	4731	38	0

Continued on next page...

Continued from previous page...

Mol	Chain	Non-H	H(model)	H(added)	Clashes	Symm-Clashes
1	B	4902	0	4727	38	0
2	A	4	0	3	3	0
2	B	4	0	3	5	0
3	A	48	0	32	4	0
3	B	48	0	32	5	0
4	A	23	0	12	1	0
4	B	23	0	12	1	0
5	A	86	0	0	1	0
5	B	73	0	0	5	0
All	All	10137	0	9552	82	0

Clashscore is defined as the number of clashes calculated for the entry per 1000 atoms (including hydrogens) of the entry. The overall clashscore for this entry is 4.

All (82) close contacts within the same asymmetric unit are listed below.

Atom-1	Atom-2	Distance(Å)	Clash(Å)
1:B:387:GLY:HA2	2:B:653:ACT:H3	1.45	0.97
1:B:387:GLY:CA	2:B:653:ACT:H3	2.10	0.80
2:B:653:ACT:H2	5:B:1064:HOH:O	1.86	0.75
2:A:653:ACT:H2	3:A:990:COA:S1P	2.27	0.74
1:B:191:ARG:NH1	3:B:991:COA:O4A	2.27	0.68
1:A:611:MET:CE	1:A:611:MET:HA	2.24	0.68
3:B:991:COA:O2A	3:B:991:COA:OAP	2.10	0.64
1:A:611:MET:HA	1:A:611:MET:HE3	1.79	0.64
1:B:552:HIS:HD2	1:B:555:LYS:H	1.48	0.61
1:B:357:ALA:HB2	3:B:991:COA:H32	1.83	0.60
1:A:76:ASN:HD22	1:A:79:ALA:H	1.51	0.59
1:B:580:ARG:HD2	1:B:593:PRO:O	2.03	0.58
1:B:552:HIS:CD2	1:B:555:LYS:H	2.22	0.57
1:A:410:VAL:HA	1:A:425:PRO:HG2	1.85	0.57
1:B:134:VAL:HG11	1:B:178:SER:HB2	1.88	0.55
1:A:134:VAL:HG11	1:A:178:SER:HB2	1.89	0.55
1:B:119:ARG:HG2	1:B:246:PRO:HA	1.89	0.54
1:A:20:ASN:HB2	1:A:21:PRO:CD	2.38	0.53
1:A:552:HIS:HD2	1:A:555:LYS:H	1.55	0.53
1:A:387:GLY:HA2	2:A:653:ACT:H1	1.92	0.52
1:B:539:HIS:HB3	1:B:542:ILE:HD12	1.91	0.51
1:A:194:ARG:HD3	1:B:337:PRO:O	2.11	0.50
1:B:465:VAL:HG12	1:B:497:PHE:HA	1.94	0.50
2:B:653:ACT:C	4:B:998:AMP:O3P	2.60	0.49
1:A:20:ASN:HB2	1:A:21:PRO:HD2	1.93	0.49
1:B:552:HIS:HD2	1:B:554:ILE:H	1.59	0.49

Continued on next page...

Continued from previous page...

Atom-1	Atom-2	Distance(Å)	Clash(Å)
3:A:990:COA:O2A	3:A:990:COA:O6A	2.31	0.49
1:B:265:SER:HA	5:B:1020:HOH:O	2.12	0.49
1:B:552:HIS:CD2	1:B:554:ILE:H	2.31	0.48
1:A:552:HIS:CD2	1:A:555:LYS:H	2.30	0.48
1:B:515:ARG:HG3	1:B:519:VAL:HG12	1.93	0.48
1:B:20:ASN:HB2	1:B:21:PRO:CD	2.43	0.48
3:A:990:COA:OAP	3:A:990:COA:O2A	2.20	0.48
1:A:137:ILE:HD12	1:A:159:HIS:HB2	1.94	0.48
1:B:312:GLY:O	1:B:316:LEU:HB3	2.14	0.47
1:A:584:ARG:O	1:A:588:GLY:HA2	2.15	0.47
1:A:386:VAL:HG22	1:A:387:GLY:N	2.30	0.47
1:A:355:TYR:CE1	1:A:386:VAL:HB	2.50	0.47
1:A:611:MET:CE	1:A:611:MET:CA	2.94	0.45
1:B:76:ASN:HD22	1:B:79:ALA:H	1.63	0.45
1:B:191:ARG:CZ	1:B:333:VAL:HG12	2.46	0.45
2:B:653:ACT:CH3	5:B:1064:HOH:O	2.57	0.45
1:A:450:ASP:OD2	1:A:454:HIS:HB2	2.17	0.45
1:A:196:ILE:HG21	3:A:990:COA:H2A	1.97	0.45
1:B:376:ASP:O	1:B:377:ARG:HB2	2.17	0.45
1:A:312:GLY:O	1:A:316:LEU:HB3	2.16	0.45
2:A:653:ACT:C	4:A:999:AMP:O3P	2.65	0.44
1:B:182:LEU:HD11	1:B:218:ILE:HG13	2.00	0.44
1:B:150:LEU:HD23	1:B:150:LEU:HA	1.85	0.44
1:A:362:ARG:HD2	1:A:553:ALA:O	2.18	0.44
1:A:383:LEU:HB2	1:A:409:VAL:HG22	1.99	0.44
1:B:391:ASN:HB3	5:B:1065:HOH:O	2.17	0.44
1:B:395:TRP:CZ2	1:B:409:VAL:HB	2.52	0.43
1:A:134:VAL:HA	1:A:158:VAL:O	2.18	0.43
1:A:316:LEU:HD12	1:A:317:LEU:HD12	2.00	0.43
1:B:335:ASN:H	1:B:335:ASN:HD22	1.67	0.43
1:A:261:ILE:HD12	1:A:478:PHE:HB2	2.00	0.43
1:A:206:LEU:HD22	1:A:211:VAL:HG11	2.00	0.43
1:B:208:ASN:HA	1:B:209:PRO:HD2	1.89	0.43
1:A:413:TRP:CD1	1:A:512:ILE:HG12	2.53	0.43
1:A:573:PRO:HG2	1:B:393:GLU:HB3	2.01	0.43
1:A:580:ARG:HD2	1:A:593:PRO:O	2.19	0.43
1:B:589:PRO:HB2	3:B:991:COA:H4B	2.00	0.42
1:B:439:ARG:HG2	1:B:439:ARG:HH11	1.84	0.42
1:A:555:LYS:NZ	1:A:594:ASP:OD1	2.52	0.42
1:A:602:LEU:HA	1:A:603:PRO:HD3	1.92	0.42
1:A:417:GLU:OE2	1:A:526:ARG:NH2	2.47	0.42
1:A:272:LYS:HA	1:A:272:LYS:HD2	1.78	0.42

Continued on next page...

Continued from previous page...

Atom-1	Atom-2	Distance(Å)	Clash(Å)
1:B:196:ILE:HG21	3:B:991:COA:H2A	2.02	0.41
1:A:436:SER:HB2	1:A:511:TRP:CE2	2.55	0.41
1:B:590:LEU:HD22	5:B:1052:HOH:O	2.20	0.41
1:B:570:GLU:HA	1:B:571:PRO:HD3	1.97	0.41
1:B:482:GLU:O	1:B:486:GLN:HB2	2.20	0.41
1:A:559:ILE:HB	1:A:593:PRO:HA	2.02	0.41
1:A:77:LEU:C	1:A:77:LEU:HD23	2.41	0.41
1:A:35:PRO:HD2	5:A:1004:HOH:O	2.21	0.41
1:B:542:ILE:HG12	1:B:563:VAL:CG1	2.51	0.41
1:A:355:TYR:CZ	1:A:386:VAL:HB	2.56	0.40
1:A:55:VAL:O	1:A:69:TRP:HA	2.21	0.40
1:B:295:TYR:CE1	1:B:299:ASP:HB2	2.56	0.40
1:B:77:LEU:HD23	1:B:77:LEU:C	2.41	0.40
1:B:544:GLU:HG3	1:B:602:LEU:HD12	2.04	0.40

There are no symmetry-related clashes.

5.3 Torsion angles

5.3.1 Protein backbone ⓘ

In the following table, the Percentiles column shows the percent Ramachandran outliers of the chain as a percentile score with respect to all X-ray entries followed by that with respect to entries of similar resolution. The Analysed column shows the number of residues for which the backbone conformation was analysed, and the total number of residues.

Mol	Chain	Analysed	Favoured	Allowed	Outliers	Percentiles	
1	A	633/652 (97%)	614 (97%)	19 (3%)	0	100	100
1	B	628/652 (96%)	607 (97%)	20 (3%)	1 (0%)	56	81
All	All	1261/1304 (97%)	1221 (97%)	39 (3%)	1 (0%)	59	84

All (1) Ramachandran outliers are listed below:

Mol	Chain	Res	Type
1	B	438	THR

5.3.2 Protein sidechains ⓘ

In the following table, the Percentiles column shows the percent sidechain outliers of the chain as a percentile score with respect to all X-ray entries followed by that with respect to entries of

similar resolution. The Analysed column shows the number of residues for which the sidechain conformation was analysed, and the total number of residues.

Mol	Chain	Analysed	Rotameric	Outliers	Percentiles	
1	A	507/538 (94%)	490 (97%)	17 (3%)	49	77
1	B	508/538 (94%)	489 (96%)	19 (4%)	45	74
All	All	1015/1076 (94%)	979 (96%)	36 (4%)	48	76

All (36) residues with a non-rotameric sidechain are listed below:

Mol	Chain	Res	Type
1	A	50	THR
1	A	76	ASN
1	A	83	ASP
1	A	127	LEU
1	A	225	SER
1	A	307	VAL
1	A	316	LEU
1	A	335	ASN
1	A	391	ASN
1	A	521	ASN
1	A	584	ARG
1	A	605	THR
1	A	610	ILE
1	A	611	MET
1	A	623	THR
1	A	632	LEU
1	A	646	GLN
1	B	16	ARG
1	B	50	THR
1	B	64	ASN
1	B	76	ASN
1	B	83	ASP
1	B	127	LEU
1	B	181	ARG
1	B	195	SER
1	B	241	ILE
1	B	268	THR
1	B	317	LEU
1	B	335	ASN
1	B	391	ASN
1	B	486	GLN
1	B	580	ARG
1	B	590	LEU

Continued on next page...

Continued from previous page...

Mol	Chain	Res	Type
1	B	605	THR
1	B	634	ASP
1	B	646	GLN

Some sidechains can be flipped to improve hydrogen bonding and reduce clashes. All (14) such sidechains are listed below:

Mol	Chain	Res	Type
1	A	76	ASN
1	A	335	ASN
1	A	445	GLN
1	A	481	HIS
1	A	525	HIS
1	A	552	HIS
1	A	646	GLN
1	B	64	ASN
1	B	76	ASN
1	B	89	ASN
1	B	335	ASN
1	B	344	GLN
1	B	486	GLN
1	B	552	HIS

5.3.3 RNA ⓘ

There are no RNA chains in this entry.

5.4 Non-standard residues in protein, DNA, RNA chains ⓘ

There are no non-standard protein/DNA/RNA residues in this entry.

5.5 Carbohydrates ⓘ

There are no carbohydrates in this entry.

5.6 Ligand geometry ⓘ

6 ligands are modelled in this entry.

In the following table, the Counts columns list the number of bonds (or angles) for which Mogul statistics could be retrieved, the number of bonds (or angles) that are observed in the model and the number of bonds (or angles) that are defined in the chemical component dictionary. The Link column lists molecule types, if any, to which the group is linked. The Z score for a bond length (or angle) is the number of standard deviations the observed value is removed from the expected value. A bond length (or angle) with $|Z| > 2$ is considered an outlier worth inspection. RMSZ is the root-mean-square of all Z scores of the bond lengths (or angles).

Mol	Type	Chain	Res	Link	Bond lengths			Bond angles		
					Counts	RMSZ	# $ Z > 2$	Counts	RMSZ	# $ Z > 2$
2	ACT	A	653	4	1,3,3	1.67	0	0,3,3	0.00	-
3	COA	A	990	-	50,50,50	1.47	3 (6%)	75,75,75	2.04	10 (13%)
4	AMP	A	999	2	25,25,25	1.19	3 (12%)	38,38,38	2.08	8 (21%)
2	ACT	B	653	-	1,3,3	0.57	0	0,3,3	0.00	-
3	COA	B	991	-	50,50,50	1.60	3 (6%)	75,75,75	2.13	11 (14%)
4	AMP	B	998	-	25,25,25	1.29	3 (12%)	38,38,38	1.92	7 (18%)

In the following table, the Chirals column lists the number of chiral outliers, the number of chiral centers analysed, the number of these observed in the model and the number defined in the chemical component dictionary. Similar counts are reported in the Torsion and Rings columns. '-' means no outliers of that kind were identified.

Mol	Type	Chain	Res	Link	Chirals	Torsions	Rings
2	ACT	A	653	4	-	0/0/0/0	0/0/0/0
3	COA	A	990	-	-	0/48/64/64	0/1/3/3
4	AMP	A	999	2	-	0/10/26/26	0/1/3/3
2	ACT	B	653	-	-	0/0/0/0	0/0/0/0
3	COA	B	991	-	-	0/48/64/64	0/1/3/3
4	AMP	B	998	-	-	0/10/26/26	0/1/3/3

All (12) bond length outliers are listed below:

Mol	Chain	Res	Type	Atoms	Z	Observed(Å)	Ideal(Å)
3	B	991	COA	O9P-C9P	9.45	1.42	1.23
3	A	990	COA	O9P-C9P	8.61	1.40	1.23
3	B	991	COA	C2A-N3A	3.36	1.38	1.32
3	A	990	COA	C2A-N3A	3.19	1.38	1.32
4	B	998	AMP	C5-C4	3.15	1.47	1.40
4	B	998	AMP	O4'-C1'	2.83	1.45	1.41
3	B	991	COA	C2A-N1A	2.83	1.39	1.33
4	A	999	AMP	C5-C4	2.73	1.46	1.40
4	B	998	AMP	C4-N9	-2.65	1.33	1.37
3	A	990	COA	C2A-N1A	2.30	1.38	1.33
4	A	999	AMP	C2-N3	2.23	1.36	1.32

Continued on next page...

Continued from previous page...

Mol	Chain	Res	Type	Atoms	Z	Observed(Å)	Ideal(Å)
4	A	999	AMP	C2'-C1'	-2.00	1.50	1.53

All (36) bond angle outliers are listed below:

Mol	Chain	Res	Type	Atoms	Z	Observed(°)	Ideal(°)
3	A	990	COA	N3A-C2A-N1A	-11.76	118.88	128.71
3	B	991	COA	CBP-CAP-C9P	11.00	123.40	112.73
3	B	991	COA	N3A-C2A-N1A	-8.95	121.23	128.71
3	A	990	COA	CBP-CAP-C9P	6.57	119.11	112.73
4	A	999	AMP	N3-C4-N9	6.28	136.77	125.43
4	A	999	AMP	N3-C2-N1	-5.73	123.92	128.71
4	B	998	AMP	N3-C4-N9	5.48	135.32	125.43
3	B	991	COA	P2A-O3A-P1A	-5.28	116.19	131.68
4	A	999	AMP	O4'-C1'-N9	4.53	112.65	108.44
4	B	998	AMP	C4-C5-N7	-4.52	105.65	109.52
3	A	990	COA	CEP-CBP-CCP	-4.47	102.31	108.76
4	B	998	AMP	N3-C2-N1	-4.13	125.26	128.71
3	A	990	COA	CEP-CBP-CAP	4.03	115.81	108.82
4	B	998	AMP	C5-C4-N3	-3.99	117.02	125.70
4	B	998	AMP	O4'-C1'-N9	3.96	112.12	108.44
3	A	990	COA	P2A-O3A-P1A	-3.95	120.10	131.68
4	A	999	AMP	C8-N9-C4	3.72	109.74	106.90
3	B	991	COA	N3A-C4A-N9A	3.63	131.99	125.43
4	A	999	AMP	C5-C4-N3	-3.34	118.44	125.70
3	A	990	COA	N3A-C4A-N9A	3.32	131.43	125.43
3	B	991	COA	O4B-C1B-N9A	2.95	111.19	108.44
3	B	991	COA	CEP-CBP-CAP	2.74	113.58	108.82
3	B	991	COA	O2A-P1A-O3A	2.73	118.07	105.14
3	B	991	COA	CDP-CBP-CAP	2.70	113.50	108.82
4	A	999	AMP	N6-C6-N1	2.70	124.67	119.36
4	B	998	AMP	O2'-C2'-C1'	-2.42	103.91	111.23
4	A	999	AMP	C4-C5-N7	-2.35	107.51	109.52
3	A	990	COA	N7A-C8A-N9A	-2.35	107.71	114.36
3	A	990	COA	CCP-CBP-CAP	2.33	112.11	108.70
3	B	991	COA	C5A-C4A-N3A	-2.25	120.80	125.70
3	A	990	COA	C2A-N3A-C4A	2.24	120.38	114.01
4	A	999	AMP	C2-N3-C4	2.23	120.36	114.01
3	B	991	COA	N7A-C8A-N9A	-2.20	108.12	114.36
4	B	998	AMP	C2-N3-C4	2.20	120.27	114.01
3	B	991	COA	C2B-C1B-N9A	-2.12	107.82	113.27
3	A	990	COA	C8A-N9A-C4A	2.08	108.48	106.90

There are no chirality outliers.

There are no torsion outliers.

There are no ring outliers.

5.7 Other polymers ⓘ

There are no such residues in this entry.

5.8 Polymer linkage issues

There are no chain breaks in this entry.

6 Fit of model and data ⓘ

6.1 Protein, DNA and RNA chains ⓘ

In the following table, the column labelled ‘#RSRZ> 2’ contains the number (and percentage) of RSRZ outliers, followed by percent RSRZ outliers for the chain as percentile scores relative to all X-ray entries and entries of similar resolution. The OWAB column contains the minimum, median, 95th percentile and maximum values of the occupancy-weighted average B-factor per residue. The column labelled ‘Q< 0.9’ lists the number of (and percentage) of residues with an average occupancy less than 0.9.

Mol	Chain	Analysed	<RSRZ>	#RSRZ>2	OWAB(Å ²)	Q<0.9
1	A	637/652 (97%)	-0.36	9 (1%) 72 73	5, 16, 34, 53	0
1	B	632/652 (96%)	-0.39	8 (1%) 74 75	9, 17, 35, 53	0
All	All	1269/1304 (97%)	-0.37	17 (1%) 74 75	5, 16, 34, 53	0

All (17) RSRZ outliers are listed below:

Mol	Chain	Res	Type	RSRZ
1	B	635	PRO	4.8
1	A	608	GLY	3.8
1	A	607	SER	3.7
1	B	5	HIS	3.7
1	A	646	GLN	3.2
1	A	632	LEU	3.0
1	A	567	HIS	2.9
1	B	607	SER	2.8
1	B	646	GLN	2.6
1	A	568	GLY	2.5
1	A	606	ARG	2.4
1	B	620	ALA	2.3
1	B	22	GLU	2.2
1	B	634	ASP	2.1
1	B	642	LEU	2.1
1	A	635	PRO	2.0
1	A	605	THR	2.0

6.2 Non-standard residues in protein, DNA, RNA chains ⓘ

There are no non-standard protein/DNA/RNA residues in this entry.

6.3 Carbohydrates ⓘ

There are no carbohydrates in this entry.

6.4 Ligands ⓘ

In the following table, the Atoms column lists the number of modelled atoms in the group and the number defined in the chemical component dictionary. LLDF column lists the quality of electron density of the group with respect to its neighbouring residues in protein, DNA or RNA chains. The B-factors column lists the minimum, median, 95th percentile and maximum values of B factors of atoms in the group. The column labelled 'Q< 0.9' lists the number of atoms with occupancy less than 0.9.

Mol	Type	Chain	Res	Atoms	RSR	LLDF	B-factors(Å ²)	Q<0.9
2	ACT	B	653	4/4	0.46	29.65	58,59,59,59	0
3	COA	B	991	48/48	0.22	3.82	22,39,58,58	0
2	ACT	A	653	4/4	0.20	3.33	48,48,48,49	0
3	COA	A	990	48/48	0.21	3.06	25,47,53,55	0
4	AMP	B	998	23/23	0.09	-0.75	10,13,20,20	0
4	AMP	A	999	23/23	0.09	-0.93	8,10,22,24	0

6.5 Other polymers ⓘ

There are no such residues in this entry.