



# Full wwPDB X-ray Structure Validation Report

Feb 28, 2014 – 01:16 PM GMT

PDB ID : 1P81  
Title : Crystal structure of the D181E variant of catalase HP11 from E. coli  
Authors : Chelikani, P.; Carpena, X.; Fita, I.; Loewen, P.C.  
Deposited on : 2003-05-06  
Resolution : 1.81 Å(reported)

This is a full wwPDB validation report for a publicly released PDB entry.  
We welcome your comments at [validation@mail.wwpdb.org](mailto:validation@mail.wwpdb.org)  
A user guide is available at <http://wwpdb.org/ValidationPDFNotes.html>

---

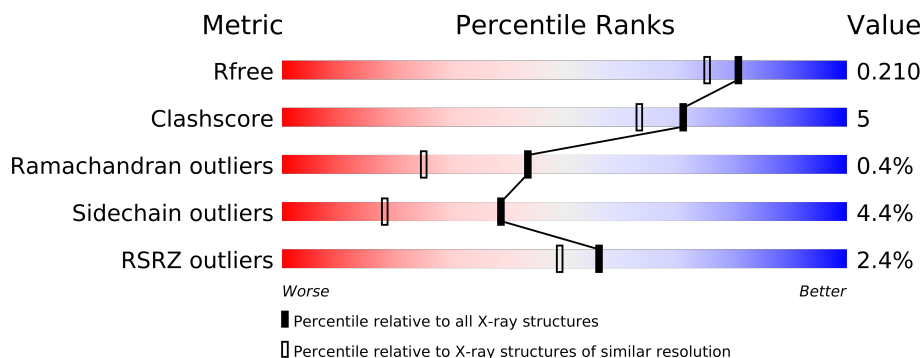
The following versions of software and data (see [references](#)) were used in the production of this report:

MolProbity : 4.02b-467  
Mogul : 1.15 2013  
Xtriage (Phenix) : dev-1323  
EDS : stable22639  
Percentile statistics : 21963  
Refmac : 5.8.0049  
CCP4 : 6.3.0 (Settle)  
Ideal geometry (proteins) : Engh & Huber (2001)  
Ideal geometry (DNA, RNA) : Parkinson et. al. (1996)  
Validation Pipeline (wwPDB-VP) : stable22683

# 1 Overall quality at a glance

The reported resolution of this entry is 1.81 Å.

Percentile scores (ranging between 0-100) for global validation metrics of the entry are shown in the following graphic. The table shows the number of entries on which the scores are based.



Metric	Whole archive (#Entries)	Similar resolution (#Entries, resolution range(Å))
$R_{free}$	66092	4101 (1.84-1.80)
Clashscore	79885	5140 (1.84-1.80)
Ramachandran outliers	78287	5077 (1.84-1.80)
Sidechain outliers	78261	5077 (1.84-1.80)
RSRZ outliers	66119	4103 (1.84-1.80)

The table below summarises the geometric issues observed across the polymeric chains and their fit to the electron density. The red, orange, yellow and green segments on the lower bar indicate the fraction of residues that contain outliers for  $\geq 3$ , 2, 1 and 0 types of geometric quality criteria. The upper red bar (where present) indicates the fraction of residues that have poor fit to the electron density.

Mol	Chain	Length	Quality of chain
1	A	753	
1	B	753	
1	C	753	
1	D	753	

## 2 Entry composition

There are 3 unique types of molecules in this entry. The entry contains 26236 atoms, of which 0 are hydrogen and 0 are deuterium.

In the tables below, the ZeroOcc column contains the number of atoms modelled with zero occupancy, the AltConf column contains the number of residues with at least one atom in alternate conformation and the Trace column contains the number of residues modelled with at most 2 atoms.

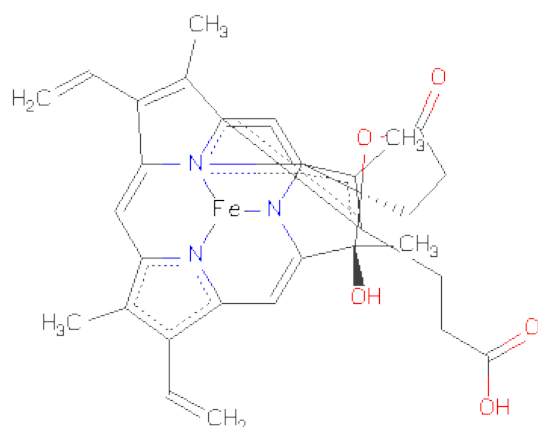
- Molecule 1 is a protein called Catalase HP11.

Mol	Chain	Residues	Atoms					ZeroOcc	AltConf	Trace
1	A	727	Total	C	N	O	S	0	0	0
			5747	3648	1005	1082	12			
1	B	727	Total	C	N	O	S	0	0	0
			5747	3648	1005	1082	12			
1	C	727	Total	C	N	O	S	0	0	0
			5747	3648	1005	1082	12			
1	D	727	Total	C	N	O	S	0	0	0
			5747	3648	1005	1082	12			

There are 4 discrepancies between the modelled and reference sequences:

Chain	Residue	Modelled	Actual	Comment	Reference
A	181	GLU	ASP	ENGINEERED	UNP P21179
B	181	GLU	ASP	ENGINEERED	UNP P21179
C	181	GLU	ASP	ENGINEERED	UNP P21179
D	181	GLU	ASP	ENGINEERED	UNP P21179

- Molecule 2 is CIS-HEME D HYDROXYCHLORIN GAMMA-SPIROLACTONE (three-letter code: HDD) (formula: C<sub>34</sub>H<sub>32</sub>FeN<sub>4</sub>O<sub>5</sub>).



Mol	Chain	Residues	Atoms					ZeroOcc	AltConf
2	A	1	Total	C	Fe	N	O	0	0
			44	34	1	4	5		
2	B	1	Total	C	Fe	N	O	0	0
			44	34	1	4	5		
2	C	1	Total	C	Fe	N	O	0	0
			44	34	1	4	5		
2	D	1	Total	C	Fe	N	O	0	0
			44	34	1	4	5		

- Molecule 3 is water.

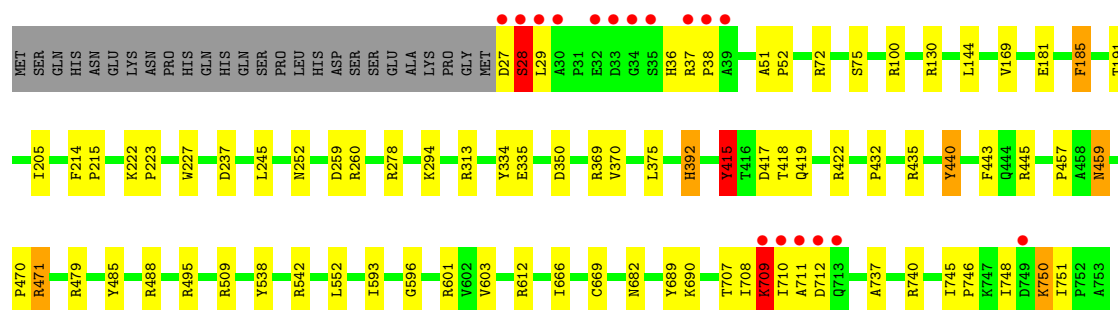
Mol	Chain	Residues	Atoms		ZeroOcc	AltConf
3	A	815	Total	O	0	0
			815	815		
3	B	702	Total	O	0	0
			702	702		
3	C	768	Total	O	0	0
			768	768		
3	D	787	Total	O	0	0
			787	787		

### 3 Residue-property plots

These plots are drawn for all protein, RNA and DNA chains in the entry. The first graphic for a chain summarises the proportions of errors displayed in the second graphic. The second graphic shows the sequence view annotated by issues in geometry and electron density. Residues are color-coded according to the number of geometric quality criteria for which they contain at least one outlier: green = 0, yellow = 1, orange = 2 and red = 3 or more. A red dot above a residue indicates a poor fit to the electron density ( $RSRZ > 2$ ). Stretches of 2 or more consecutive residues without any outlier are shown as a green connector. Residues present in the sample, but not in the model, are shown in grey.

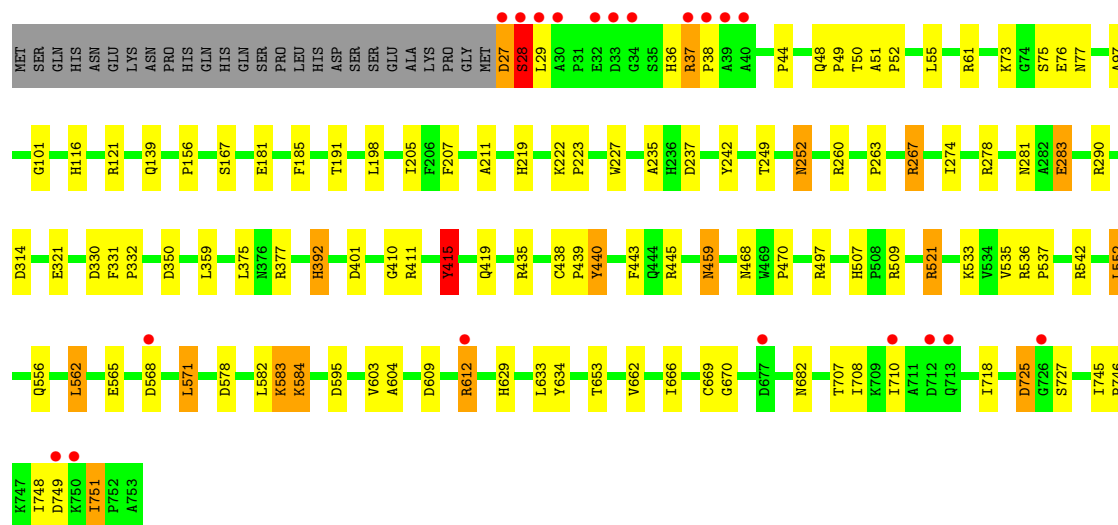
#### • Molecule 1: Catalase HP1I

Chain A:



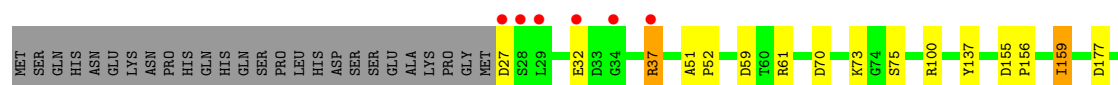
#### • Molecule 1: Catalase HP1I

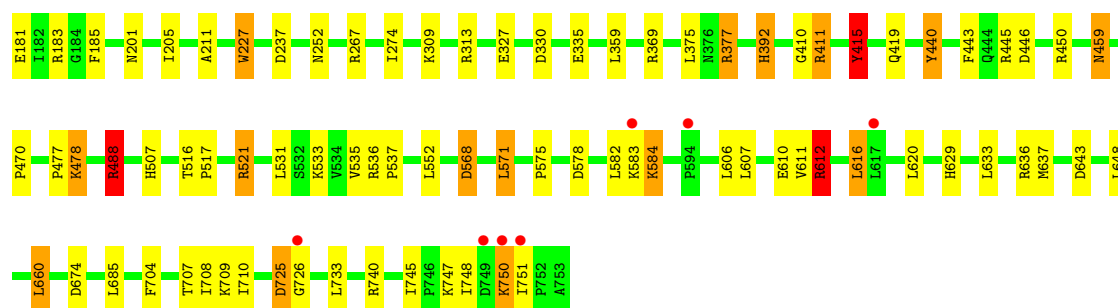
Chain B:



#### • Molecule 1: Catalase HP1I

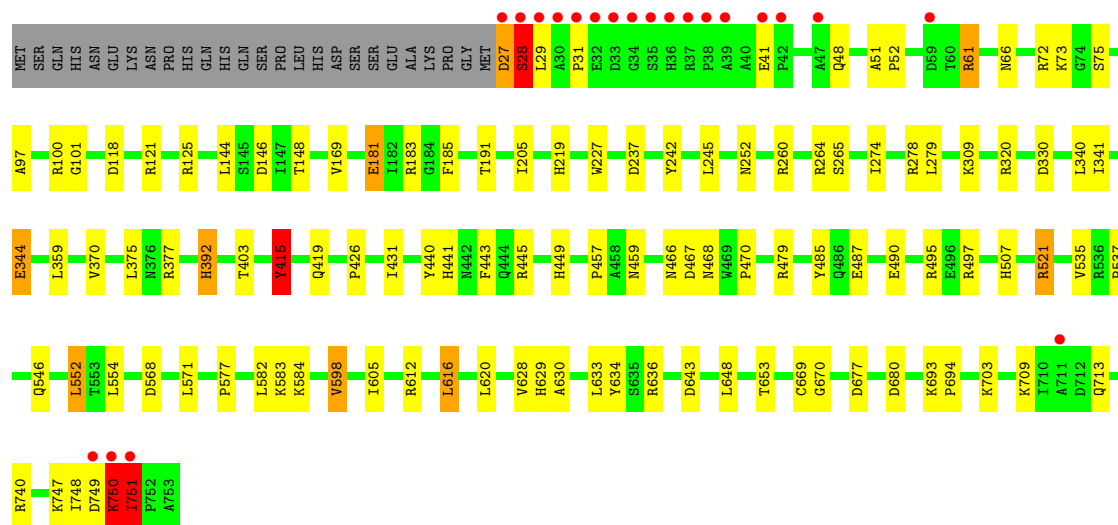
Chain C:





• Molecule 1: Catalase HP11

Chain D:



## 4 Data and refinement statistics

Property	Value	Source
Space group	P 1 21 1	Depositor
Cell constants a, b, c, $\alpha$ , $\beta$ , $\gamma$	93.38Å 132.86Å 122.04Å 90.00° 109.50° 90.00°	Depositor
Resolution (Å)	29.90 – 1.81 17.97 – 1.81	Depositor EDS
% Data completeness (in resolution range)	99.2 (29.90-1.81) 98.7 (17.97-1.81)	Depositor EDS
$R_{merge}$	0.10	Depositor
$R_{sym}$	0.10	Depositor
$\langle I/\sigma(I) \rangle$ <sup>1</sup>	2.32 (at 1.81Å)	Xtriage
Refinement program	REFMAC	Depositor
R, $R_{free}$	0.172 , 0.216 0.172 , 0.210	Depositor DCC
$R_{free}$ test set	12587 reflections (5.26%)	DCC
Wilson B-factor (Å <sup>2</sup> )	13.9	Xtriage
Anisotropy	0.378	Xtriage
Bulk solvent $k_{sol}$ (e/Å <sup>3</sup> ), $B_{sol}$ (Å <sup>2</sup> )	0.37 , 48.2	EDS
Estimated twinning fraction	0.014 for h,-k,-h-l	Xtriage
L-test for twinning	$\langle  L  \rangle = 0.51$ , $\langle L^2 \rangle = 0.35$	Xtriage
Outliers	5 of 251911 reflections (0.002%)	Xtriage
$F_o, F_c$ correlation	0.95	EDS
Total number of atoms	26236	wwPDB-VP
Average B, all atoms (Å <sup>2</sup> )	17.0	wwPDB-VP

Xtriage's analysis on translational NCS is as follows: *The largest off-origin peak in the Patterson function is 3.69% of the height of the origin peak. No significant pseudotranslation is detected.*

<sup>1</sup>Intensities estimated from amplitudes.

## 5 Model quality

### 5.1 Standard geometry

Bond lengths and bond angles in the following residue types are not validated in this section: HDD

The Z score for a bond length (or angle) is the number of standard deviations the observed value is removed from the expected value. A bond length (or angle) with  $|Z| > 5$  is considered an outlier worth inspection. RMSZ is the root-mean-square of all Z scores of the bond lengths (or angles).

Mol	Chain	Bond lengths		Bond angles	
		RMSZ	$\# Z  > 5$	RMSZ	$\# Z  > 5$
1	A	0.58	0/5903	1.24	31/8025 (0.4%)
1	B	0.56	0/5903	1.23	34/8025 (0.4%)
1	C	0.57	0/5903	1.23	28/8025 (0.3%)
1	D	0.58	0/5903	1.33	47/8025 (0.6%)
All	All	0.57	0/23612	1.26	140/32100 (0.4%)

There are no bond length outliers.

All (140) bond angle outliers are listed below:

Mol	Chain	Res	Type	Atoms	Z	Observed(°)	Ideal(°)
1	D	612	ARG	CD-NE-CZ	30.17	165.83	123.60
1	B	521	ARG	NE-CZ-NH1	14.58	127.59	120.30
1	D	740	ARG	NE-CZ-NH1	12.87	126.74	120.30
1	D	61	ARG	NE-CZ-NH1	-12.16	114.22	120.30
1	D	61	ARG	NE-CZ-NH2	11.55	126.08	120.30
1	D	612	ARG	NE-CZ-NH2	10.81	125.71	120.30
1	C	445	ARG	NE-CZ-NH1	10.54	125.57	120.30
1	D	740	ARG	NE-CZ-NH2	-10.15	115.22	120.30
1	A	488	ARG	NE-CZ-NH2	-10.05	115.27	120.30
1	D	521	ARG	NE-CZ-NH2	9.76	125.18	120.30
1	D	260	ARG	NE-CZ-NH2	-9.71	115.44	120.30
1	C	313	ARG	NE-CZ-NH1	9.67	125.14	120.30
1	C	377	ARG	NE-CZ-NH1	-9.35	115.62	120.30
1	B	27	ASP	CB-CG-OD2	-9.15	110.06	118.30
1	A	471	ARG	NE-CZ-NH2	8.96	124.78	120.30
1	B	435	ARG	NE-CZ-NH2	-8.70	115.95	120.30
1	A	479	ARG	CD-NE-CZ	8.49	135.49	123.60
1	C	636	ARG	NE-CZ-NH1	-8.46	116.07	120.30
1	A	509	ARG	NE-CZ-NH1	8.40	124.50	120.30
1	A	479	ARG	NE-CZ-NH2	-8.19	116.20	120.30

*Continued on next page...*



*Continued from previous page...*

Mol	Chain	Res	Type	Atoms	Z	Observed(°)	Ideal(°)
1	D	320	ARG	NE-CZ-NH1	8.12	124.36	120.30
1	C	59	ASP	CB-CG-OD1	7.94	125.44	118.30
1	C	636	ARG	NE-CZ-NH2	7.89	124.24	120.30
1	B	440	TYR	CB-CG-CD2	-7.86	116.28	121.00
1	D	449	HIS	CA-CB-CG	7.81	126.88	113.60
1	B	267	ARG	NE-CZ-NH2	-7.79	116.41	120.30
1	C	488	ARG	NE-CZ-NH2	-7.68	116.46	120.30
1	D	677	ASP	CB-CG-OD2	7.62	125.16	118.30
1	C	726	GLY	N-CA-C	-7.42	94.54	113.10
1	B	445	ARG	NE-CZ-NH1	7.42	124.01	120.30
1	C	568	ASP	CB-CG-OD1	-7.28	111.75	118.30
1	A	542	ARG	NE-CZ-NH2	-7.20	116.70	120.30
1	B	445	ARG	NE-CZ-NH2	-7.10	116.75	120.30
1	D	497	ARG	NE-CZ-NH1	7.01	123.81	120.30
1	D	377	ARG	NE-CZ-NH2	-7.00	116.80	120.30
1	B	440	TYR	CB-CG-CD1	7.00	125.20	121.00
1	B	392	HIS	CG-ND1-CE1	6.98	117.97	108.20
1	B	121	ARG	NE-CZ-NH1	6.97	123.78	120.30
1	A	495	ARG	NE-CZ-NH1	6.84	123.72	120.30
1	D	415	TYR	CB-CG-CD1	-6.83	116.90	121.00
1	B	435	ARG	NE-CZ-NH1	6.81	123.71	120.30
1	D	320	ARG	NE-CZ-NH2	-6.80	116.90	120.30
1	C	392	HIS	CG-ND1-CE1	6.77	117.68	108.20
1	B	28	SER	N-CA-CB	6.77	120.65	110.50
1	C	440	TYR	CB-CG-CD1	6.76	125.05	121.00
1	A	130	ARG	NE-CZ-NH2	-6.74	116.93	120.30
1	A	435	ARG	NE-CZ-NH2	-6.72	116.94	120.30
1	D	479	ARG	NE-CZ-NH1	6.71	123.65	120.30
1	A	471	ARG	NE-CZ-NH1	-6.70	116.95	120.30
1	D	100	ARG	CG-CD-NE	6.67	125.82	111.80
1	D	344	GLU	CA-CB-CG	6.61	127.94	113.40
1	B	260	ARG	NE-CZ-NH2	6.56	123.58	120.30
1	D	121	ARG	NE-CZ-NH1	6.51	123.56	120.30
1	D	445	ARG	NE-CZ-NH2	-6.47	117.07	120.30
1	B	350	ASP	CB-CG-OD1	-6.46	112.49	118.30
1	D	61	ARG	CD-NE-CZ	6.45	132.63	123.60
1	A	440	TYR	CB-CG-CD1	6.42	124.85	121.00
1	D	260	ARG	NH1-CZ-NH2	6.42	126.46	119.40
1	B	278	ARG	CD-NE-CZ	6.33	132.47	123.60
1	B	401	ASP	CB-CG-OD2	6.30	123.97	118.30
1	C	536	ARG	NE-CZ-NH1	-6.28	117.16	120.30
1	A	350	ASP	CB-CG-OD1	-6.23	112.70	118.30

*Continued on next page...*

*Continued from previous page...*

Mol	Chain	Res	Type	Atoms	Z	Observed(°)	Ideal(°)
1	D	125	ARG	NE-CZ-NH2	-6.18	117.21	120.30
1	D	636	ARG	NE-CZ-NH1	6.08	123.34	120.30
1	A	259	ASP	CB-CG-OD2	6.04	123.74	118.30
1	B	242	TYR	CB-CG-CD2	-6.03	117.38	121.00
1	C	440	TYR	CB-CG-CD2	-6.01	117.39	121.00
1	B	27	ASP	CB-CG-OD1	5.99	123.69	118.30
1	A	440	TYR	CB-CG-CD2	-5.94	117.44	121.00
1	A	479	ARG	NE-CZ-NH1	5.94	123.27	120.30
1	B	121	ARG	NE-CZ-NH2	-5.94	117.33	120.30
1	C	725	ASP	N-CA-CB	5.94	121.28	110.60
1	D	568	ASP	CB-CG-OD2	5.93	123.64	118.30
1	C	740	ARG	NE-CZ-NH1	5.93	123.26	120.30
1	C	70	ASP	CB-CG-OD2	5.92	123.63	118.30
1	D	264	ARG	NE-CZ-NH1	5.91	123.26	120.30
1	A	445	ARG	NE-CZ-NH2	-5.87	117.36	120.30
1	D	495	ARG	NE-CZ-NH1	5.87	123.24	120.30
1	C	740	ARG	CD-NE-CZ	5.86	131.81	123.60
1	A	392	HIS	CG-ND1-CE1	5.86	116.40	108.20
1	A	130	ARG	NE-CZ-NH1	5.85	123.22	120.30
1	B	415	TYR	CA-CB-CG	5.85	124.52	113.40
1	C	446	ASP	CB-CG-OD2	5.84	123.56	118.30
1	C	327	GLU	OE1-CD-OE2	-5.84	116.29	123.30
1	A	278	ARG	NE-CZ-NH1	-5.79	117.40	120.30
1	A	485	TYR	CB-CG-CD1	-5.75	117.55	121.00
1	A	601	ARG	NE-CZ-NH1	5.75	123.17	120.30
1	D	445	ARG	NE-CZ-NH1	5.73	123.16	120.30
1	A	415	TYR	CB-CG-CD1	-5.67	117.60	121.00
1	B	283	GLU	CB-CG-CD	5.66	129.49	114.20
1	A	260	ARG	NE-CZ-NH2	-5.64	117.48	120.30
1	D	643	ASP	CB-CG-OD1	5.62	123.36	118.30
1	D	709	LYS	CA-CB-CG	5.62	125.76	113.40
1	A	28	SER	N-CA-CB	-5.61	102.09	110.50
1	D	183	ARG	NE-CZ-NH1	-5.59	117.50	120.30
1	B	609	ASP	CB-CG-OD2	5.55	123.30	118.30
1	D	479	ARG	CD-NE-CZ	5.54	131.35	123.60
1	D	521	ARG	CG-CD-NE	5.50	123.36	111.80
1	B	419	GLN	CG-CD-OE1	-5.50	110.60	121.60
1	C	450	ARG	NE-CZ-NH2	-5.49	117.55	120.30
1	C	674	ASP	CB-CG-OD2	5.48	123.23	118.30
1	C	177	ASP	CB-CG-OD2	5.47	123.22	118.30
1	A	100	ARG	NE-CZ-NH2	5.46	123.03	120.30
1	D	485	TYR	CB-CG-CD1	-5.46	117.73	121.00

*Continued on next page...*

*Continued from previous page...*

Mol	Chain	Res	Type	Atoms	Z	Observed(°)	Ideal(°)
1	D	467	ASP	CB-CG-OD1	5.45	123.20	118.30
1	D	680	ASP	CB-CG-OD2	5.44	123.20	118.30
1	A	334	TYR	CB-CG-CD2	-5.43	117.74	121.00
1	D	377	ARG	NH1-CZ-NH2	5.43	125.37	119.40
1	B	61	ARG	NE-CZ-NH2	5.40	123.00	120.30
1	D	612	ARG	CG-CD-NE	5.39	123.12	111.80
1	D	419	GLN	CG-CD-OE1	-5.39	110.83	121.60
1	C	419	GLN	CB-CG-CD	-5.37	97.64	111.60
1	D	521	ARG	CD-NE-CZ	-5.34	116.12	123.60
1	C	419	GLN	CG-CD-OE1	-5.32	110.96	121.60
1	D	403	THR	N-CA-CB	5.32	120.41	110.30
1	C	183	ARG	NE-CZ-NH1	-5.31	117.64	120.30
1	A	422	ARG	NE-CZ-NH2	5.30	122.95	120.30
1	A	740	ARG	NE-CZ-NH1	5.29	122.95	120.30
1	D	265	SER	N-CA-CB	-5.26	102.61	110.50
1	A	419	GLN	CB-CG-CD	-5.25	97.94	111.60
1	B	167	SER	N-CA-CB	-5.25	102.63	110.50
1	C	411	ARG	NE-CZ-NH2	-5.24	117.68	120.30
1	D	72	ARG	NE-CZ-NH2	-5.22	117.69	120.30
1	D	27	ASP	CB-CG-OD1	5.22	123.00	118.30
1	D	392	HIS	CG-ND1-CE1	5.22	115.51	108.20
1	B	419	GLN	CB-CG-CD	-5.22	98.03	111.60
1	B	497	ARG	NE-CZ-NH1	5.19	122.90	120.30
1	B	377	ARG	NE-CZ-NH2	-5.18	117.71	120.30
1	C	415	TYR	CA-CB-CG	5.16	123.19	113.40
1	B	542	ARG	NE-CZ-NH2	-5.15	117.73	120.30
1	C	612	ARG	NE-CZ-NH1	5.14	122.87	120.30
1	D	457	PRO	N-CA-CB	5.12	109.45	103.30
1	B	536	ARG	NE-CZ-NH2	-5.09	117.76	120.30
1	A	72	ARG	NE-CZ-NH1	5.08	122.84	120.30
1	B	509	ARG	NE-CZ-NH1	-5.07	117.76	120.30
1	D	242	TYR	CB-CG-CD2	-5.06	117.96	121.00
1	B	290	ARG	N-CA-CB	5.05	119.69	110.60
1	B	542	ARG	NE-CZ-NH1	5.03	122.82	120.30
1	B	314	ASP	CB-CG-OD1	5.03	122.83	118.30
1	A	185	PHE	CB-CG-CD2	-5.01	117.29	120.80

There are no chirality outliers.

There are no planarity outliers.

## 5.2 Close contacts ⓘ

In the following table, the Non-H and H(model) columns list the number of non-hydrogen atoms and hydrogen atoms in the chain respectively. The H(added) column lists the number of hydrogens added by MolProbity. The Clashes column lists the number of clashes within the asymmetric unit, and the number in parentheses is this value normalized per 1000 atoms of the molecule in the chain. The Symm-Clashes column gives symmetry related clashes, in the same way as for the Clashes column.

Mol	Chain	Non-H	H(model)	H(added)	Clashes	Symm-Clashes
1	A	5747	0	5580	43	0
1	B	5747	0	5580	66	0
1	C	5747	0	5580	52	0
1	D	5747	0	5580	52	0
2	A	44	0	31	5	0
2	B	44	0	31	4	0
2	C	44	0	31	6	0
2	D	44	0	31	2	0
3	A	815	0	0	6	1
3	B	702	0	0	6	1
3	C	768	0	0	9	0
3	D	787	0	0	7	0
All	All	26236	0	22444	206	1

Clashscore is defined as the number of clashes calculated for the entry per 1000 atoms (including hydrogens) of the entry. The overall clashscore for this entry is 5.

All (206) close contacts within the same asymmetric unit are listed below.

Atom-1	Atom-2	Distance(Å)	Clash(Å)
1:B:392:HIS:ND1	1:B:415:TYR:HB2	1.38	1.39
1:A:392:HIS:ND1	1:A:415:TYR:HB2	1.40	1.35
1:C:392:HIS:ND1	1:C:415:TYR:HB2	1.42	1.32
1:D:392:HIS:ND1	1:D:415:TYR:HB2	1.39	1.31
1:C:392:HIS:ND1	1:C:415:TYR:CB	2.33	0.89
1:A:392:HIS:ND1	1:A:415:TYR:CB	2.34	0.86
1:B:392:HIS:ND1	1:B:415:TYR:CB	2.34	0.85
1:D:392:HIS:ND1	1:D:415:TYR:CB	2.35	0.80
1:D:750:LYS:HD3	1:D:751:ILE:H	1.48	0.77
1:B:583:LYS:NZ	1:B:583:LYS:H	1.82	0.77
2:C:760:HDD:HBC1	2:C:760:HDD:HMC1	1.66	0.76
1:C:392:HIS:CG	1:C:415:TYR:HB2	2.22	0.75
1:B:710:ILE:HD13	1:B:718:ILE:HG13	1.69	0.74
1:C:748:ILE:O	1:C:751:ILE:HG22	1.89	0.73
2:A:760:HDD:HMC1	2:A:760:HDD:HBC1	1.73	0.69

*Continued on next page...*

*Continued from previous page...*

Atom-1	Atom-2	Distance(Å)	Clash(Å)
1:C:267:ARG:HG3	3:C:3862:HOH:O	1.94	0.67
1:C:137:TYR:HB2	1:C:159:ILE:CD1	2.24	0.67
1:A:181:GLU:HG2	3:A:4194:HOH:O	1.94	0.67
1:D:27:ASP:O	1:D:28:SER:HB2	1.94	0.66
1:A:392:HIS:CG	1:A:415:TYR:HB2	2.29	0.66
1:A:28:SER:HB2	1:D:245:LEU:HD13	1.78	0.65
1:B:267:ARG:HG3	3:B:2872:HOH:O	1.95	0.65
1:B:533:LYS:HE2	3:B:4201:HOH:O	1.96	0.65
1:B:51:ALA:HB1	1:B:52:PRO:HD2	1.79	0.64
1:B:521:ARG:NH2	1:B:745:ILE:HD13	2.13	0.63
1:B:583:LYS:O	1:B:584:LYS:HB3	1.98	0.63
1:D:392:HIS:CG	1:D:415:TYR:HB2	2.28	0.62
1:A:690:LYS:HG3	1:A:751:ILE:HD11	1.80	0.62
1:D:552:LEU:HD11	1:D:571:LEU:HD23	1.81	0.62
1:A:709:LYS:HA	1:A:709:LYS:HE3	1.81	0.62
1:D:546:GLN:HG3	3:D:3688:HOH:O	2.00	0.61
1:C:552:LEU:HD21	1:C:571:LEU:HD12	1.83	0.61
1:A:245:LEU:HD13	1:D:29:LEU:HD13	1.84	0.60
1:B:552:LEU:HD22	1:B:556:GLN:HG3	1.82	0.60
1:B:612:ARG:HD3	1:B:670:GLY:HA2	1.82	0.60
2:B:760:HDD:HMC1	2:B:760:HDD:HBC1	1.83	0.60
1:C:745:ILE:HD13	3:C:3866:HOH:O	2.00	0.60
1:C:274:ILE:HD12	2:C:760:HDD:HMB1	1.84	0.59
1:C:583:LYS:O	1:C:584:LYS:HB3	2.02	0.59
1:C:521:ARG:HG2	3:C:3866:HOH:O	2.03	0.59
1:B:748:ILE:O	1:B:751:ILE:HG22	2.03	0.59
1:B:281:ASN:OD1	1:B:283:GLU:HG3	2.03	0.59
2:A:760:HDD:HBB1	2:A:760:HDD:HMB1	1.85	0.58
1:A:748:ILE:O	1:A:751:ILE:HG13	2.03	0.58
1:C:477:PRO:HB2	1:C:478:LYS:HD3	1.86	0.58
1:A:750:LYS:O	1:A:750:LYS:HE3	2.04	0.57
1:D:431:ILE:HD11	3:D:4022:HOH:O	2.04	0.57
1:B:37:ARG:HD2	3:B:3832:HOH:O	2.04	0.57
1:D:51:ALA:HB1	1:D:52:PRO:HD2	1.88	0.56
1:B:583:LYS:HZ3	1:B:583:LYS:H	1.53	0.56
1:A:459:ASN:ND2	1:B:219:HIS:HB3	2.20	0.56
1:D:629:HIS:HD2	3:D:2510:HOH:O	1.88	0.56
1:A:51:ALA:HB1	1:A:52:PRO:HD2	1.88	0.55
1:D:750:LYS:HD3	1:D:751:ILE:N	2.20	0.55
1:B:359:LEU:H	1:B:507:HIS:HD2	1.52	0.55
1:C:708:ILE:HG13	1:C:710:ILE:HG12	1.89	0.55
1:C:578:ASP:HB2	1:C:582:LEU:O	2.07	0.55

*Continued on next page...*

*Continued from previous page...*

Atom-1	Atom-2	Distance(Å)	Clash(Å)
1:D:583:LYS:HB2	1:D:583:LYS:NZ	2.22	0.55
1:D:535:VAL:O	1:D:537:PRO:HD3	2.06	0.54
1:B:682:ASN:HB3	1:B:707:THR:HG21	1.89	0.54
1:A:36:HIS:H	1:A:36:HIS:CD2	2.26	0.54
1:B:392:HIS:CG	1:B:415:TYR:HB2	2.34	0.53
1:C:535:VAL:O	1:C:537:PRO:HD3	2.08	0.53
1:D:330:ASP:OD1	1:D:629:HIS:HE1	1.90	0.53
1:B:521:ARG:NH2	1:B:745:ILE:HG21	2.24	0.53
1:B:535:VAL:O	1:B:537:PRO:HD3	2.09	0.53
1:B:634:TYR:O	1:B:653:THR:HA	2.08	0.53
1:A:708:ILE:O	1:A:710:ILE:HG22	2.09	0.52
1:C:610:GLU:OE1	1:C:643:ASP:HA	2.09	0.52
1:D:274:ILE:HD12	2:D:760:HDD:HMB1	1.92	0.52
1:B:330:ASP:OD1	1:B:629:HIS:HE1	1.92	0.52
1:C:443:PHE:CZ	1:C:470:PRO:HD2	2.45	0.52
1:B:603:VAL:HG11	1:B:666:ILE:HD12	1.92	0.51
1:C:704:PHE:O	1:C:707:THR:HG22	2.11	0.51
1:D:61:ARG:HH11	1:D:66:ASN:HA	1.76	0.51
2:C:760:HDD:HBB1	2:C:760:HDD:HMB1	1.93	0.51
1:A:443:PHE:CZ	1:A:470:PRO:HD2	2.45	0.51
1:B:583:LYS:HZ2	1:B:583:LYS:H	1.55	0.51
1:C:359:LEU:H	1:C:507:HIS:HD2	1.59	0.51
1:D:443:PHE:CZ	1:D:470:PRO:HD2	2.46	0.51
2:B:760:HDD:HBB1	2:B:760:HDD:HMB1	1.92	0.50
1:D:748:ILE:O	1:D:751:ILE:HG22	2.12	0.50
1:A:751:ILE:O	1:A:751:ILE:HD12	2.12	0.50
1:B:708:ILE:HG13	1:B:710:ILE:HD12	1.93	0.50
1:A:682:ASN:HB3	1:A:707:THR:HG21	1.94	0.50
3:A:3472:HOH:O	1:C:27:ASP:HB3	2.10	0.50
1:A:457:PRO:HG2	1:C:37:ARG:HH21	1.77	0.50
1:A:144:LEU:HD11	1:A:370:VAL:HG13	1.94	0.50
1:D:577:PRO:HG2	3:D:4041:HOH:O	2.11	0.50
1:B:578:ASP:HB3	1:B:582:LEU:O	2.11	0.49
1:B:629:HIS:HD2	3:B:1690:HOH:O	1.95	0.49
1:A:538:TYR:CE2	1:D:31:PRO:HG3	2.47	0.49
1:C:629:HIS:HD2	3:C:2098:HOH:O	1.95	0.49
1:C:745:ILE:O	1:C:748:ILE:HG12	2.12	0.49
1:A:689:TYR:OH	1:A:710:ILE:HG21	2.13	0.49
1:C:330:ASP:OD1	1:C:629:HIS:HE1	1.96	0.49
1:C:607:LEU:HD22	1:C:611:VAL:HG21	1.95	0.49
1:D:341:ILE:HG13	3:D:3967:HOH:O	2.14	0.48
1:D:616:LEU:HD22	1:D:620:LEU:HG	1.95	0.48

*Continued on next page...*

*Continued from previous page...*

Atom-1	Atom-2	Distance(Å)	Clash(Å)
1:B:76:GLU:O	1:B:77:ASN:HB2	2.14	0.48
1:A:27:ASP:O	1:A:28:SER:C	2.51	0.48
1:A:603:VAL:HG11	1:A:666:ILE:HD12	1.96	0.48
1:D:61:ARG:NH1	1:D:66:ASN:HA	2.29	0.48
1:C:747:LYS:HE2	3:C:3968:HOH:O	2.13	0.47
1:B:222:LYS:HB3	1:B:223:PRO:HD2	1.96	0.47
1:B:50:THR:HG21	1:C:227:TRP:CZ3	2.49	0.47
1:B:443:PHE:CZ	1:B:470:PRO:HD2	2.48	0.47
2:A:760:HDD:HBC1	2:A:760:HDD:CMC	2.42	0.47
1:B:552:LEU:HD21	1:B:571:LEU:HD12	1.96	0.47
1:B:745:ILE:O	1:B:748:ILE:HG12	2.15	0.47
1:A:457:PRO:HG2	1:C:37:ARG:NH2	2.29	0.47
1:D:278:ARG:HH12	1:D:487:GLU:CD	2.17	0.47
1:C:459:ASN:ND2	1:D:219:HIS:HB3	2.30	0.47
1:D:144:LEU:HD11	1:D:370:VAL:HG13	1.96	0.47
1:A:745:ILE:N	1:A:746:PRO:HD2	2.30	0.47
1:B:274:ILE:HD12	2:B:760:HDD:HMB1	1.96	0.47
3:A:1180:HOH:O	1:C:52:PRO:HG3	2.15	0.46
1:B:29:LEU:HG	3:B:3519:HOH:O	2.14	0.46
1:A:612:ARG:HE	1:A:669:CYS:HB3	1.79	0.46
3:B:1590:HOH:O	1:D:52:PRO:HG3	2.16	0.46
1:B:359:LEU:H	1:B:507:HIS:CD2	2.31	0.46
1:B:604:ALA:HB2	1:B:662:VAL:HG11	1.97	0.46
1:B:52:PRO:HG2	1:B:55:LEU:HD12	1.97	0.46
1:C:612:ARG:HB2	1:C:612:ARG:CZ	2.45	0.46
1:A:471:ARG:CZ	1:C:27:ASP:HA	2.46	0.45
1:C:211:ALA:CB	1:C:410:GLY:HA3	2.46	0.45
2:A:760:HDD:HMC1	2:A:760:HDD:CBC	2.44	0.45
1:A:294:LYS:NZ	3:A:2181:HOH:O	2.49	0.45
1:D:359:LEU:H	1:D:507:HIS:HD2	1.64	0.45
1:A:750:LYS:HE3	1:A:750:LYS:C	2.36	0.45
1:B:562:LEU:HA	1:C:637:MET:HB2	1.99	0.45
1:B:725:ASP:OD2	1:B:727:SER:N	2.49	0.45
1:A:612:ARG:NH2	3:A:4124:HOH:O	2.49	0.45
1:B:521:ARG:HH21	1:B:745:ILE:HD13	1.78	0.45
1:C:359:LEU:H	1:C:507:HIS:CD2	2.35	0.45
1:D:634:TYR:O	1:D:653:THR:HA	2.17	0.45
1:C:51:ALA:HB1	1:C:52:PRO:HD2	1.98	0.44
1:D:521:ARG:HH11	1:D:521:ARG:HD3	1.56	0.44
1:C:309:LYS:HB3	1:C:660:LEU:HD21	1.98	0.44
1:D:146:ASP:HB2	3:D:3343:HOH:O	2.18	0.44
1:B:468:ASN:HD22	1:D:27:ASP:N	2.14	0.44

*Continued on next page...*



*Continued from previous page...*

Atom-1	Atom-2	Distance(Å)	Clash(Å)
2:D:760:HDD:HBB1	2:D:760:HDD:HMB1	1.98	0.44
1:B:411:ARG:HG2	2:B:760:HDD:C2C	2.47	0.44
1:D:598:VAL:HG13	1:D:628:VAL:CG2	2.48	0.44
1:A:38:PRO:HG2	1:A:51:ALA:HB2	1.99	0.44
1:C:616:LEU:O	1:C:620:LEU:HG	2.18	0.43
1:C:73:LYS:HD2	3:C:3629:HOH:O	2.17	0.43
1:D:669:CYS:SG	1:D:670:GLY:N	2.89	0.43
2:C:760:HDD:CBC	2:C:760:HDD:HMC1	2.45	0.43
1:A:418:THR:HG21	2:A:760:HDD:HBD2	2.00	0.43
1:D:583:LYS:O	1:D:584:LYS:HB3	2.19	0.43
1:B:459:ASN:H	1:B:459:ASN:HD22	1.67	0.43
1:B:48:GLN:HB3	1:B:49:PRO:HD2	2.01	0.43
1:D:552:LEU:HD11	1:D:571:LEU:CD2	2.49	0.43
1:A:603:VAL:HG11	1:A:666:ILE:CD1	2.49	0.43
1:B:29:LEU:HD12	1:D:468:ASN:HB2	2.00	0.42
1:D:605:ILE:HD12	1:D:630:ALA:HB1	2.00	0.42
1:A:335:GLU:OE1	1:A:369:ARG:HD3	2.19	0.42
1:A:294:LYS:NZ	3:A:1383:HOH:O	2.51	0.42
1:C:516:THR:HB	1:C:517:PRO:CD	2.49	0.42
1:B:438:CYS:HB2	1:B:439:PRO:HD2	2.00	0.42
1:B:521:ARG:HH21	1:B:521:ARG:HD2	1.60	0.42
1:B:745:ILE:HB	1:B:746:PRO:HD3	2.01	0.42
1:B:669:CYS:SG	1:B:670:GLY:N	2.90	0.42
1:D:278:ARG:HD2	1:D:278:ARG:HH21	1.74	0.42
1:C:155:ASP:HA	1:C:156:PRO:HD2	1.86	0.42
1:B:521:ARG:HH21	1:B:745:ILE:HG21	1.85	0.42
1:B:207:PHE:O	1:B:249:THR:HA	2.20	0.42
1:A:313:ARG:NH1	1:D:309:LYS:HD2	2.35	0.41
1:A:417:ASP:OD2	1:D:118:ASP:OD1	2.38	0.41
1:B:44:PRO:HB3	1:B:629:HIS:CD2	2.56	0.41
1:C:533:LYS:NZ	3:C:3181:HOH:O	2.53	0.41
1:B:252:ASN:HA	1:B:252:ASN:HD22	1.61	0.41
1:A:214:PHE:HB3	1:A:215:PRO:HD3	2.02	0.41
1:C:411:ARG:HG2	2:C:760:HDD:C2C	2.51	0.41
1:A:169:VAL:HB	1:A:181:GLU:OE2	2.20	0.41
1:D:703:LYS:HE2	3:D:3690:HOH:O	2.19	0.41
1:C:750:LYS:HD3	1:C:750:LYS:HA	1.86	0.41
1:B:211:ALA:CB	1:B:410:GLY:HA3	2.51	0.41
1:C:516:THR:HB	1:C:517:PRO:HD2	2.03	0.41
1:B:139:GLN:HG2	1:B:156:PRO:O	2.20	0.41
1:C:201:ASN:CG	2:C:760:HDD:HMB2	2.41	0.41
1:C:37:ARG:NH1	3:C:2821:HOH:O	2.54	0.41

*Continued on next page...*



Continued from previous page...

Atom-1	Atom-2	Distance(Å)	Clash(Å)
1:C:751:ILE:HD12	3:C:3317:HOH:O	2.20	0.41
1:B:37:ARG:HA	1:B:38:PRO:HD3	1.88	0.41
1:C:100:ARG:HH11	1:C:100:ARG:HD3	1.78	0.41
1:D:169:VAL:HB	1:D:181:GLU:OE2	2.21	0.41
1:A:222:LYS:HB3	1:A:223:PRO:HD2	2.02	0.41
1:B:97:ALA:O	1:B:101:GLY:HA3	2.20	0.41
1:D:693:LYS:HA	1:D:694:PRO:HD3	1.86	0.41
1:B:36:HIS:HD1	1:B:36:HIS:H	1.67	0.41
1:D:97:ALA:O	1:D:101:GLY:HA3	2.21	0.41
1:A:37:ARG:HA	1:A:38:PRO:HD3	1.89	0.41
1:A:596:GLY:HA3	1:A:737:ALA:O	2.21	0.41
1:C:488:ARG:HB2	1:C:488:ARG:HE	1.59	0.40
1:B:235:ALA:HB1	1:B:533:LYS:HD3	2.03	0.40
1:B:37:ARG:NH1	1:D:466:ASN:OD1	2.54	0.40
1:B:116:HIS:CD2	1:D:426:PRO:HB2	2.57	0.40
1:B:331:PHE:HA	1:B:332:PRO:HD3	1.89	0.40
1:A:708:ILE:O	1:A:709:LYS:C	2.59	0.40
1:B:211:ALA:HB3	1:B:410:GLY:HA3	2.02	0.40
1:C:32:GLU:OE1	1:C:32:GLU:HA	2.21	0.40
1:D:148:THR:HB	1:D:279:LEU:HB3	2.03	0.40
1:D:552:LEU:HA	1:D:552:LEU:HD22	1.85	0.40
1:B:73:LYS:HD3	1:D:441:HIS:CD2	2.56	0.40
1:C:335:GLU:OE2	1:C:369:ARG:NH2	2.55	0.40

All (1) symmetry-related close contacts are listed below. The label for Atom-2 includes the symmetry operator and encoded unit-cell translations to be applied.

Atom-1	Atom-2	Distance(Å)	Clash(Å)
3:A:1050:HOH:O	3:B:3904:HOH:O[2_747]	1.45	0.75

## 5.3 Torsion angles

### 5.3.1 Protein backbone ⓘ

In the following table, the Percentiles column shows the percent Ramachandran outliers of the chain as a percentile score with respect to all X-ray entries followed by that with respect to entries of similar resolution. The Analysed column shows the number of residues for which the backbone conformation was analysed, and the total number of residues.

Mol	Chain	Analysed	Favoured	Allowed	Outliers	Percentiles
1	A	725/753 (96%)	699 (96%)	22 (3%)	4 (1%)	33 15

Continued on next page...

*Continued from previous page...*

Mol	Chain	Analysed	Favoured	Allowed	Outliers	Percentiles	
1	B	725/753 (96%)	699 (96%)	22 (3%)	4 (1%)	33	15
1	C	725/753 (96%)	703 (97%)	21 (3%)	1 (0%)	59	41
1	D	725/753 (96%)	700 (97%)	21 (3%)	4 (1%)	33	15
All	All	2900/3012 (96%)	2801 (97%)	86 (3%)	13 (0%)	43	25

All (13) Ramachandran outliers are listed below:

Mol	Chain	Res	Type
1	A	28	SER
1	A	709	LYS
1	B	28	SER
1	D	28	SER
1	D	750	LYS
1	D	751	ILE
1	B	725	ASP
1	A	75	SER
1	A	711	ALA
1	C	75	SER
1	B	75	SER
1	B	584	LYS
1	D	75	SER

### 5.3.2 Protein sidechains ⓘ

In the following table, the Percentiles column shows the percent sidechain outliers of the chain as a percentile score with respect to all X-ray entries followed by that with respect to entries of similar resolution. The Analysed column shows the number of residues for which the sidechain conformation was analysed, and the total number of residues.

Mol	Chain	Analysed	Rotameric	Outliers	Percentiles	
1	A	612/636 (96%)	595 (97%)	17 (3%)	56	38
1	B	612/636 (96%)	584 (95%)	28 (5%)	37	16
1	C	612/636 (96%)	579 (95%)	33 (5%)	31	12
1	D	612/636 (96%)	582 (95%)	30 (5%)	35	14
All	All	2448/2544 (96%)	2340 (96%)	108 (4%)	39	18

All (108) residues with a non-rotameric sidechain are listed below:

Mol	Chain	Res	Type
1	A	29	LEU
1	A	185	PHE
1	A	191	THR
1	A	205	ILE
1	A	227	TRP
1	A	237	ASP
1	A	252	ASN
1	A	375	LEU
1	A	415	TYR
1	A	432	PRO
1	A	440	TYR
1	A	459	ASN
1	A	552	LEU
1	A	593	ILE
1	A	709	LYS
1	A	712	ASP
1	A	750	LYS
1	B	27	ASP
1	B	28	SER
1	B	37	ARG
1	B	181	GLU
1	B	185	PHE
1	B	191	THR
1	B	198	LEU
1	B	205	ILE
1	B	227	TRP
1	B	237	ASP
1	B	252	ASN
1	B	263	PRO
1	B	321	GLU
1	B	375	LEU
1	B	415	TYR
1	B	440	TYR
1	B	459	ASN
1	B	552	LEU
1	B	562	LEU
1	B	565	GLU
1	B	568	ASP
1	B	571	LEU
1	B	583	LYS
1	B	595	ASP
1	B	612	ARG
1	B	633	LEU

*Continued on next page...*

*Continued from previous page...*

Mol	Chain	Res	Type
1	B	749	ASP
1	B	751	ILE
1	C	37	ARG
1	C	61	ARG
1	C	159	ILE
1	C	181	GLU
1	C	185	PHE
1	C	205	ILE
1	C	227	TRP
1	C	237	ASP
1	C	252	ASN
1	C	375	LEU
1	C	377	ARG
1	C	415	TYR
1	C	440	TYR
1	C	459	ASN
1	C	478	LYS
1	C	488	ARG
1	C	521	ARG
1	C	531	LEU
1	C	568	ASP
1	C	571	LEU
1	C	575	PRO
1	C	584	LYS
1	C	606	LEU
1	C	612	ARG
1	C	616	LEU
1	C	633	LEU
1	C	648	LEU
1	C	660	LEU
1	C	685	LEU
1	C	709	LYS
1	C	725	ASP
1	C	733	LEU
1	C	750	LYS
1	D	28	SER
1	D	41	GLU
1	D	48	GLN
1	D	73	LYS
1	D	181	GLU
1	D	185	PHE
1	D	191	THR

*Continued on next page...*

*Continued from previous page...*

Mol	Chain	Res	Type
1	D	205	ILE
1	D	227	TRP
1	D	237	ASP
1	D	252	ASN
1	D	340	LEU
1	D	344	GLU
1	D	375	LEU
1	D	415	TYR
1	D	440	TYR
1	D	459	ASN
1	D	490	GLU
1	D	552	LEU
1	D	554	LEU
1	D	582	LEU
1	D	598	VAL
1	D	616	LEU
1	D	633	LEU
1	D	648	LEU
1	D	713	GLN
1	D	747	LYS
1	D	749	ASP
1	D	750	LYS
1	D	751	ILE

Some sidechains can be flipped to improve hydrogen bonding and reduce clashes. All (24) such sidechains are listed below:

Mol	Chain	Res	Type
1	A	36	HIS
1	A	252	ASN
1	A	459	ASN
1	A	515	GLN
1	A	713	GLN
1	B	157	ASN
1	B	252	ASN
1	B	459	ASN
1	B	507	HIS
1	B	629	HIS
1	C	252	ASN
1	C	459	ASN
1	C	507	HIS
1	C	556	GLN
1	C	629	HIS

*Continued on next page...*

*Continued from previous page...*

Mol	Chain	Res	Type
1	C	671	ASN
1	D	48	GLN
1	D	252	ASN
1	D	449	HIS
1	D	459	ASN
1	D	507	HIS
1	D	556	GLN
1	D	629	HIS
1	D	671	ASN

### 5.3.3 RNA ⓘ

There are no RNA chains in this entry.

## 5.4 Non-standard residues in protein, DNA, RNA chains ⓘ

There are no non-standard protein/DNA/RNA residues in this entry.

## 5.5 Carbohydrates ⓘ

There are no carbohydrates in this entry.

## 5.6 Ligand geometry ⓘ

4 ligands are modelled in this entry.

In the following table, the Counts columns list the number of bonds (or angles) for which Mogul statistics could be retrieved, the number of bonds (or angles) that are observed in the model and the number of bonds (or angles) that are defined in the chemical component dictionary. The Link column lists molecule types, if any, to which the group is linked. The Z score for a bond length (or angle) is the number of standard deviations the observed value is removed from the expected value. A bond length (or angle) with  $|Z| > 2$  is considered an outlier worth inspection. RMSZ is the root-mean-square of all Z scores of the bond lengths (or angles).

Mol	Type	Chain	Res	Link	Bond lengths			Bond angles		
					Counts	RMSZ	$\# Z  > 2$	Counts	RMSZ	$\# Z  > 2$
2	HDD	A	760	1,3	52,52,52	3.67	26 (50%)	70,89,89	4.84	45 (64%)
2	HDD	B	760	1,3	52,52,52	3.47	24 (46%)	70,89,89	5.07	51 (72%)
2	HDD	C	760	1,3	52,52,52	3.54	25 (48%)	70,89,89	4.61	45 (64%)
2	HDD	D	760	1,3	52,52,52	3.60	22 (42%)	70,89,89	5.00	43 (61%)

In the following table, the Chirals column lists the number of chiral outliers, the number of chiral centers analysed, the number of these observed in the model and the number defined in the chemical component dictionary. Similar counts are reported in the Torsion and Rings columns. '-' means no outliers of that kind were identified.

Mol	Type	Chain	Res	Link	Chirals	Torsions	Rings
2	HDD	A	760	1,3	-	0/5/89/89	0/1/9/9
2	HDD	B	760	1,3	-	0/5/89/89	0/1/9/9
2	HDD	C	760	1,3	-	0/5/89/89	0/1/9/9
2	HDD	D	760	1,3	-	0/5/89/89	0/1/9/9

All (97) bond length outliers are listed below:

Mol	Chain	Res	Type	Atoms	Z	Observed(Å)	Ideal(Å)
2	B	760	HDD	C2D-C3D	-12.14	1.27	1.54
2	C	760	HDD	C2D-C3D	-12.01	1.28	1.54
2	A	760	HDD	C2D-C3D	-11.56	1.29	1.54
2	D	760	HDD	C2D-C3D	-11.53	1.29	1.54
2	D	760	HDD	CMD-C2D	10.48	1.69	1.53
2	C	760	HDD	CAD-C3D	-9.79	1.35	1.53
2	A	760	HDD	CAD-C3D	9.65	1.71	1.53
2	A	760	HDD	C4A-C3A	8.11	1.50	1.40
2	C	760	HDD	C4A-C3A	7.99	1.50	1.40
2	B	760	HDD	C4A-C3A	7.96	1.50	1.40
2	B	760	HDD	O1D-C3D	7.49	1.59	1.46
2	C	760	HDD	O1D-C3D	7.15	1.59	1.46
2	D	760	HDD	C4A-C3A	6.94	1.48	1.40
2	A	760	HDD	O1D-C3D	6.80	1.58	1.46
2	B	760	HDD	C1C-C2C	6.77	1.48	1.40
2	D	760	HDD	O1D-C3D	6.52	1.57	1.46
2	D	760	HDD	C1C-C2C	6.09	1.47	1.40
2	B	760	HDD	CMD-C2D	6.04	1.62	1.53
2	A	760	HDD	C3C-C4C	5.99	1.49	1.40
2	A	760	HDD	C1C-C2C	5.86	1.47	1.40
2	D	760	HDD	C3C-C4C	5.84	1.49	1.40
2	A	760	HDD	C3C-CAC	5.81	1.54	1.49
2	A	760	HDD	FE-NB	5.49	2.16	1.92
2	B	760	HDD	C3C-C4C	5.34	1.48	1.40
2	C	760	HDD	C3C-C4C	5.34	1.48	1.40
2	A	760	HDD	OND-C2D	5.29	1.53	1.42
2	C	760	HDD	FE-ND	5.10	2.17	1.97
2	B	760	HDD	C3C-CAC	5.05	1.53	1.49
2	D	760	HDD	FE-NB	5.01	2.14	1.92
2	D	760	HDD	FE-ND	4.98	2.16	1.97
2	D	760	HDD	OND-C2D	4.96	1.53	1.42

*Continued on next page...*

*Continued from previous page...*

Mol	Chain	Res	Type	Atoms	Z	Observed(Å)	Ideal(Å)
2	A	760	HDD	FE-ND	4.91	2.16	1.97
2	C	760	HDD	FE-NB	4.85	2.13	1.92
2	D	760	HDD	C3C-CAC	4.78	1.53	1.49
2	C	760	HDD	CHA-C4D	4.67	1.44	1.36
2	D	760	HDD	CHA-C4D	4.65	1.44	1.36
2	C	760	HDD	C1C-C2C	4.60	1.45	1.40
2	A	760	HDD	CHA-C4D	4.47	1.44	1.36
2	B	760	HDD	OND-C2D	4.46	1.52	1.42
2	A	760	HDD	FE-NA	4.31	2.10	1.92
2	B	760	HDD	CHA-C4D	4.19	1.43	1.36
2	C	760	HDD	C3C-CAC	4.16	1.53	1.49
2	D	760	HDD	C1A-C2A	4.06	1.50	1.43
2	B	760	HDD	FE-NB	4.04	2.09	1.92
2	B	760	HDD	C3C-C2C	-4.02	1.34	1.41
2	C	760	HDD	OND-C2D	3.95	1.51	1.42
2	B	760	HDD	C4B-C3B	3.95	1.46	1.41
2	A	760	HDD	C3C-C2C	-3.91	1.34	1.41
2	D	760	HDD	C3C-C2C	-3.86	1.34	1.41
2	C	760	HDD	C3B-CAB	3.85	1.55	1.48
2	D	760	HDD	FE-NA	3.73	2.08	1.92
2	B	760	HDD	C1A-C2A	3.68	1.49	1.43
2	B	760	HDD	FE-ND	3.54	2.11	1.97
2	A	760	HDD	C1A-C2A	3.52	1.49	1.43
2	C	760	HDD	C1A-C2A	3.46	1.49	1.43
2	B	760	HDD	CAD-C3D	3.45	1.60	1.53
2	D	760	HDD	C4B-C3B	3.42	1.45	1.41
2	D	760	HDD	C3B-C2B	-3.41	1.35	1.41
2	D	760	HDD	FE-NC	3.36	2.06	1.92
2	C	760	HDD	C3C-C2C	-3.35	1.35	1.41
2	B	760	HDD	C3B-C2B	-3.30	1.35	1.41
2	A	760	HDD	FE-NC	3.24	2.06	1.92
2	C	760	HDD	C4B-C3B	3.20	1.45	1.41
2	B	760	HDD	FE-NC	3.16	2.06	1.92
2	C	760	HDD	C3B-C2B	-3.14	1.35	1.41
2	D	760	HDD	C3B-CAB	3.07	1.54	1.48
2	D	760	HDD	O1D-CGD	-3.07	1.30	1.35
2	B	760	HDD	C3B-CAB	3.03	1.54	1.48
2	A	760	HDD	C3B-C2B	-3.02	1.36	1.41
2	C	760	HDD	FE-NA	2.86	2.04	1.92
2	A	760	HDD	C4B-C3B	2.80	1.45	1.41
2	B	760	HDD	O1D-CGD	-2.79	1.30	1.35
2	C	760	HDD	CMC-C2C	2.78	1.57	1.51

*Continued on next page...*



*Continued from previous page...*

Mol	Chain	Res	Type	Atoms	Z	Observed(Å)	Ideal(Å)
2	B	760	HDD	FE-NA	2.77	2.04	1.92
2	C	760	HDD	C4A-NA	2.73	1.41	1.36
2	A	760	HDD	C3B-CAB	2.65	1.53	1.48
2	A	760	HDD	C4A-NA	2.61	1.41	1.36
2	C	760	HDD	CBA-CGA	2.60	1.57	1.50
2	C	760	HDD	CMD-C2D	2.59	1.57	1.53
2	D	760	HDD	CMC-C2C	2.56	1.57	1.51
2	D	760	HDD	C4A-NA	2.55	1.41	1.36
2	A	760	HDD	CMC-C2C	2.54	1.57	1.51
2	A	760	HDD	CBA-CGA	2.52	1.57	1.50
2	C	760	HDD	C1C-NC	2.50	1.41	1.36
2	B	760	HDD	CBA-CGA	2.47	1.56	1.50
2	B	760	HDD	C4A-NA	2.41	1.41	1.36
2	B	760	HDD	CMC-C2C	2.37	1.56	1.51
2	A	760	HDD	O1D-CGD	-2.32	1.31	1.35
2	A	760	HDD	C1C-NC	2.25	1.41	1.36
2	C	760	HDD	C4D-ND	-2.24	1.34	1.38
2	D	760	HDD	CBA-CGA	2.23	1.56	1.50
2	A	760	HDD	O2A-CGA	-2.17	1.22	1.30
2	C	760	HDD	C2D-C1D	2.08	1.55	1.52
2	C	760	HDD	O1D-CGD	-2.07	1.31	1.35
2	A	760	HDD	C1B-NB	-2.04	1.34	1.37
2	B	760	HDD	C1D-ND	2.03	1.41	1.38
2	A	760	HDD	C4D-ND	-2.01	1.35	1.38

All (184) bond angle outliers are listed below:

Mol	Chain	Res	Type	Atoms	Z	Observed(°)	Ideal(°)
2	D	760	HDD	O1D-C3D-CAD	-22.38	90.15	105.29
2	B	760	HDD	O1D-C3D-CAD	-19.94	91.81	105.29
2	A	760	HDD	O1D-C3D-CAD	-16.62	94.05	105.29
2	B	760	HDD	OND-C2D-CMD	-14.07	85.17	109.57
2	C	760	HDD	O1D-C3D-CAD	-13.26	96.32	105.29
2	B	760	HDD	C4B-C3B-C2B	12.90	115.88	106.87
2	D	760	HDD	OND-C2D-CMD	-12.40	88.06	109.57
2	D	760	HDD	C4B-C3B-C2B	12.21	115.40	106.87
2	A	760	HDD	CAD-C3D-C4D	-11.96	96.64	116.02
2	A	760	HDD	C4B-C3B-C2B	11.92	115.20	106.87
2	C	760	HDD	C4B-C3B-C2B	11.29	114.75	106.87
2	A	760	HDD	CAD-C3D-C2D	11.02	127.29	116.32
2	D	760	HDD	O1D-C3D-C2D	10.72	129.66	109.46
2	B	760	HDD	C1B-C2B-C3B	-9.95	100.45	107.07

*Continued on next page...*

*Continued from previous page...*

Mol	Chain	Res	Type	Atoms	Z	Observed(°)	Ideal(°)
2	B	760	HDD	CAD-C3D-C2D	9.88	126.16	116.32
2	C	760	HDD	C1B-C2B-C3B	-9.76	100.58	107.07
2	C	760	HDD	CAD-C3D-C4D	-9.68	100.32	116.02
2	B	760	HDD	C3B-C4B-NB	-9.58	97.68	111.52
2	C	760	HDD	CAD-C3D-C2D	9.29	125.57	116.32
2	D	760	HDD	C3B-C4B-NB	-8.49	99.26	111.52
2	B	760	HDD	CAD-C3D-C4D	-8.46	102.31	116.02
2	B	760	HDD	O1D-C3D-C2D	8.43	125.33	109.46
2	C	760	HDD	C3B-C4B-NB	-8.37	99.42	111.52
2	C	760	HDD	OND-C2D-CMD	-8.34	95.10	109.57
2	A	760	HDD	C3B-C4B-NB	-8.34	99.47	111.52
2	A	760	HDD	CBD-CAD-C3D	-8.24	92.09	105.00
2	A	760	HDD	O1D-C3D-C2D	7.93	124.39	109.46
2	C	760	HDD	C4B-CHC-C1C	-7.72	117.31	127.47
2	C	760	HDD	O1D-C3D-C2D	7.44	123.47	109.46
2	D	760	HDD	C1B-C2B-C3B	-7.43	102.12	107.07
2	A	760	HDD	C1B-C2B-C3B	-7.30	102.21	107.07
2	D	760	HDD	CAD-C3D-C4D	-7.24	104.28	116.02
2	A	760	HDD	O1D-CGD-CBD	-7.06	101.83	110.21
2	D	760	HDD	C4B-NB-C1B	7.01	116.09	105.58
2	A	760	HDD	C3C-C4C-NC	-6.81	102.02	108.64
2	D	760	HDD	O1D-CGD-O2D	6.75	127.47	120.81
2	B	760	HDD	C4C-CHD-C1D	-6.68	116.14	130.06
2	B	760	HDD	C4C-C3C-CAC	-6.57	113.87	127.18
2	C	760	HDD	C4C-CHD-C1D	-6.55	116.42	130.06
2	A	760	HDD	C4C-CHD-C1D	-6.51	116.51	130.06
2	D	760	HDD	C4C-CHD-C1D	-6.37	116.80	130.06
2	D	760	HDD	CAD-C3D-C2D	6.29	122.58	116.32
2	C	760	HDD	C1A-C2A-C3A	6.26	113.40	106.92
2	C	760	HDD	C4C-C3C-CAC	-6.26	114.50	127.18
2	A	760	HDD	C2C-C1C-NC	-6.10	104.81	109.41
2	A	760	HDD	C4B-NB-C1B	6.04	114.63	105.58
2	C	760	HDD	C4B-NB-C1B	6.01	114.59	105.58
2	A	760	HDD	C4C-C3C-CAC	-5.77	115.50	127.18
2	C	760	HDD	C4A-C3A-C2A	-5.75	102.99	107.00
2	C	760	HDD	O1D-CGD-CBD	-5.67	103.48	110.21
2	A	760	HDD	C1A-C2A-C3A	5.62	112.74	106.92
2	B	760	HDD	C4B-CHC-C1C	-5.60	120.10	127.47
2	D	760	HDD	C3C-C4C-NC	-5.55	103.25	108.64
2	D	760	HDD	C4C-C3C-CAC	-5.53	115.98	127.18
2	D	760	HDD	O1D-CGD-CBD	-5.35	103.86	110.21
2	C	760	HDD	CHD-C1D-ND	5.21	138.38	124.54

*Continued on next page...*

*Continued from previous page...*

Mol	Chain	Res	Type	Atoms	Z	Observed(°)	Ideal(°)
2	B	760	HDD	CHD-C1D-ND	5.18	138.31	124.54
2	B	760	HDD	C4A-C3A-C2A	-5.12	103.44	107.00
2	A	760	HDD	C3C-CAC-CBC	-5.11	115.38	125.95
2	B	760	HDD	C1A-C2A-C3A	5.05	112.15	106.92
2	B	760	HDD	C4B-NB-C1B	5.01	113.10	105.58
2	A	760	HDD	CMA-C3A-C4A	-4.87	121.13	128.62
2	A	760	HDD	CHD-C1D-ND	4.83	137.39	124.54
2	D	760	HDD	C2C-C1C-NC	-4.80	105.78	109.41
2	C	760	HDD	C3B-CAB-CBB	-4.77	116.07	125.95
2	A	760	HDD	O2A-CGA-O1A	4.77	135.43	123.30
2	A	760	HDD	C4B-CHC-C1C	-4.71	121.27	127.47
2	C	760	HDD	C1B-CHB-C4A	-4.66	121.34	127.47
2	D	760	HDD	CBD-CAD-C3D	4.59	112.19	105.00
2	B	760	HDD	C3C-C4C-NC	-4.49	104.28	108.64
2	A	760	HDD	C4A-C3A-C2A	-4.48	103.88	107.00
2	C	760	HDD	CBD-CAD-C3D	4.45	111.97	105.00
2	D	760	HDD	C3C-CAC-CBC	-4.45	116.74	125.95
2	D	760	HDD	C1A-C2A-C3A	4.43	111.51	106.92
2	A	760	HDD	OND-C2D-CMD	-4.42	101.89	109.57
2	D	760	HDD	C2B-C1B-NB	-4.42	106.07	109.41
2	B	760	HDD	C2C-C1C-NC	-4.42	106.08	109.41
2	C	760	HDD	C2A-C1A-NA	-4.40	103.62	109.73
2	C	760	HDD	CHB-C4A-NA	4.34	131.82	124.58
2	B	760	HDD	C1B-CHB-C4A	-4.30	121.81	127.47
2	C	760	HDD	CHD-C4C-NC	4.27	131.70	124.58
2	C	760	HDD	C4D-ND-C1D	4.24	110.81	107.94
2	A	760	HDD	C4C-NC-C1C	4.21	112.31	106.76
2	A	760	HDD	CHC-C1C-NC	4.16	131.53	124.58
2	A	760	HDD	CMA-C3A-C2A	4.14	132.75	124.94
2	C	760	HDD	O2A-CGA-O1A	4.13	133.79	123.30
2	B	760	HDD	C4C-NC-C1C	4.12	112.18	106.76
2	C	760	HDD	C3C-C4C-NC	-4.04	104.71	108.64
2	D	760	HDD	CMD-C2D-C1D	4.04	120.19	113.22
2	C	760	HDD	C3A-C4A-CHB	-4.03	118.36	126.00
2	D	760	HDD	C4B-CHC-C1C	-4.01	122.20	127.47
2	D	760	HDD	CHD-C1D-ND	3.99	135.16	124.54
2	B	760	HDD	CHC-C1C-NC	3.96	131.20	124.58
2	B	760	HDD	CMC-C2C-C1C	-3.95	122.55	128.62
2	D	760	HDD	C3D-O1D-CGD	3.94	122.82	109.33
2	D	760	HDD	CHA-C1A-NA	3.94	131.15	124.58
2	C	760	HDD	CMA-C3A-C2A	3.88	132.26	124.94
2	A	760	HDD	C2B-C1B-NB	-3.87	106.49	109.41

*Continued on next page...*

*Continued from previous page...*

Mol	Chain	Res	Type	Atoms	Z	Observed(°)	Ideal(°)
2	D	760	HDD	C2A-C1A-NA	-3.83	104.42	109.73
2	B	760	HDD	O1D-CGD-O2D	3.80	124.56	120.81
2	D	760	HDD	O2A-CGA-O1A	3.77	132.88	123.30
2	C	760	HDD	CMD-C2D-C3D	3.75	125.22	115.61
2	B	760	HDD	CMB-C2B-C3B	3.64	130.70	124.97
2	A	760	HDD	C4D-ND-C1D	3.62	110.39	107.94
2	C	760	HDD	C3C-CAC-CBC	-3.60	118.49	125.95
2	A	760	HDD	O1D-CGD-O2D	3.59	124.36	120.81
2	B	760	HDD	CMA-C3A-C4A	-3.59	123.09	128.62
2	A	760	HDD	C2A-C1A-NA	-3.58	104.77	109.73
2	D	760	HDD	C4C-NC-C1C	3.57	111.46	106.76
2	B	760	HDD	O1D-CGD-CBD	-3.53	106.03	110.21
2	B	760	HDD	CHD-C4C-NC	3.50	130.42	124.58
2	C	760	HDD	O1D-C3D-C4D	-3.45	100.86	109.60
2	D	760	HDD	O1A-CGA-CBA	-3.43	111.23	123.03
2	B	760	HDD	CMA-C3A-C2A	3.43	131.40	124.94
2	C	760	HDD	C4C-C3C-C2C	3.41	111.10	106.97
2	A	760	HDD	C1B-CHB-C4A	-3.38	123.02	127.47
2	A	760	HDD	O1A-CGA-CBA	-3.37	111.42	123.03
2	B	760	HDD	C2A-C1A-NA	-3.35	105.08	109.73
2	D	760	HDD	C4C-C3C-C2C	3.30	110.96	106.97
2	C	760	HDD	C2C-C3C-CAC	3.29	134.06	127.33
2	A	760	HDD	C4C-C3C-C2C	3.26	110.91	106.97
2	B	760	HDD	C3C-CAC-CBC	-3.24	119.25	125.95
2	A	760	HDD	CHD-C4C-NC	3.23	129.97	124.58
2	B	760	HDD	C2C-C3C-CAC	3.22	133.91	127.33
2	D	760	HDD	CHD-C4C-NC	3.21	129.93	124.58
2	A	760	HDD	CHB-C4A-NA	3.20	129.91	124.58
2	C	760	HDD	O1D-CGD-O2D	3.15	123.92	120.81
2	C	760	HDD	CHA-C4D-ND	-3.15	116.17	124.54
2	D	760	HDD	C4A-C3A-C2A	-3.13	104.82	107.00
2	B	760	HDD	O2A-CGA-O1A	3.12	131.25	123.30
2	A	760	HDD	C3D-C4D-CHA	3.10	134.80	123.04
2	C	760	HDD	CAA-CBA-CGA	-3.10	103.50	113.47
2	C	760	HDD	C3D-C4D-CHA	3.07	134.68	123.04
2	B	760	HDD	O1D-C3D-C4D	-3.06	101.84	109.60
2	C	760	HDD	O1A-CGA-CBA	-3.05	112.52	123.03
2	A	760	HDD	CHA-C4D-ND	-3.04	116.46	124.54
2	B	760	HDD	CMC-C2C-C3C	3.03	129.74	124.97
2	B	760	HDD	C3B-CAB-CBB	-3.01	119.71	125.95
2	B	760	HDD	O1A-CGA-CBA	-2.98	112.77	123.03
2	A	760	HDD	CAA-CBA-CGA	-2.97	103.93	113.47

*Continued on next page...*

*Continued from previous page...*

Mol	Chain	Res	Type	Atoms	Z	Observed(°)	Ideal(°)
2	D	760	HDD	C3D-C4D-ND	2.96	110.79	105.75
2	A	760	HDD	C3A-C4A-CHB	-2.94	120.44	126.00
2	B	760	HDD	C3D-C4D-ND	2.93	110.74	105.75
2	B	760	HDD	C3A-C4A-CHB	-2.93	120.45	126.00
2	C	760	HDD	C2B-C1B-NB	-2.89	107.23	109.41
2	D	760	HDD	C3D-C2D-C1D	2.87	112.09	100.74
2	B	760	HDD	CHA-C4D-ND	-2.85	116.95	124.54
2	A	760	HDD	C2C-C3C-CAC	2.85	133.16	127.33
2	B	760	HDD	C4C-C3C-C2C	2.84	110.41	106.97
2	D	760	HDD	CMB-C2B-C3B	2.82	129.42	124.97
2	D	760	HDD	O1D-C3D-C4D	-2.82	102.47	109.60
2	C	760	HDD	CMB-C2B-C3B	2.79	129.37	124.97
2	A	760	HDD	O1D-C3D-C4D	-2.74	102.67	109.60
2	B	760	HDD	C2D-C1D-CHD	-2.71	116.28	123.22
2	B	760	HDD	C2B-C1B-NB	-2.69	107.38	109.41
2	B	760	HDD	C3D-C2D-C1D	2.68	111.35	100.74
2	C	760	HDD	CMA-C3A-C4A	-2.64	124.56	128.62
2	D	760	HDD	CHA-C4D-ND	-2.63	117.55	124.54
2	B	760	HDD	C3D-O1D-CGD	2.62	118.31	109.33
2	A	760	HDD	CMB-C2B-C3B	2.62	129.09	124.97
2	D	760	HDD	CHC-C1C-NC	2.61	128.94	124.58
2	B	760	HDD	C2C-C1C-CHC	-2.60	121.08	126.00
2	C	760	HDD	CHC-C1C-NC	2.55	128.84	124.58
2	A	760	HDD	C3D-C2D-C1D	2.54	110.78	100.74
2	C	760	HDD	C3D-C2D-C1D	2.53	110.75	100.74
2	D	760	HDD	C2C-C3C-CAC	2.44	132.32	127.33
2	B	760	HDD	C3D-C4D-CHA	2.42	132.19	123.04
2	D	760	HDD	CAA-CBA-CGA	-2.41	105.71	113.47
2	C	760	HDD	C4C-NC-C1C	2.41	109.94	106.76
2	B	760	HDD	CAA-CBA-CGA	-2.41	105.73	113.47
2	D	760	HDD	C4A-NA-C1A	2.40	109.93	106.76
2	B	760	HDD	CHB-C4A-NA	2.39	128.58	124.58
2	B	760	HDD	CMD-C2D-C1D	2.38	117.33	113.22
2	A	760	HDD	C2D-C3D-C4D	2.36	106.60	102.69
2	D	760	HDD	CBA-CAA-C2A	2.33	116.79	112.69
2	C	760	HDD	OND-C2D-C1D	-2.30	107.50	111.72
2	D	760	HDD	C3D-C4D-CHA	2.21	131.42	123.04
2	D	760	HDD	C1A-CHA-C4D	-2.19	125.50	130.06
2	B	760	HDD	C3C-C2C-C1C	-2.11	105.77	107.00
2	A	760	HDD	C3C-C4C-CHD	-2.09	122.05	126.00
2	B	760	HDD	CHA-C1A-NA	2.05	128.00	124.58
2	C	760	HDD	C3D-O1D-CGD	2.04	116.32	109.33

*Continued on next page...*

*Continued from previous page...*

Mol	Chain	Res	Type	Atoms	Z	Observed(°)	Ideal(°)
2	A	760	HDD	CMD-C2D-C1D	-2.03	109.72	113.22
2	B	760	HDD	CMD-C2D-C3D	2.02	120.80	115.61

There are no chirality outliers.

There are no torsion outliers.

There are no ring outliers.

## 5.7 Other polymers ⓘ

There are no such residues in this entry.

## 5.8 Polymer linkage issues

There are no chain breaks in this entry.

## 6 Fit of model and data ⓘ

### 6.1 Protein, DNA and RNA chains ⓘ

In the following table, the column labelled ‘#RSRZ > 2’ contains the number (and percentage) of RSRZ outliers, followed by percent RSRZ outliers for the chain as percentile scores relative to all X-ray entries and entries of similar resolution. The OWAB column contains the minimum, median, 95<sup>th</sup> percentile and maximum values of the occupancy-weighted average B-factor per residue. The column labelled ‘Q < 0.9’ lists the number of (and percentage) of residues with an average occupancy less than 0.9.

Mol	Chain	Analysed	<RSRZ>	#RSRZ > 2		OWAB(Å <sup>2</sup> )	Q < 0.9
1	A	727/753 (96%)	-0.38	17 (2%)	57 51	7, 13, 30, 55	1 (0%)
1	B	727/753 (96%)	-0.31	20 (2%)	50 43	7, 15, 36, 50	1 (0%)
1	C	727/753 (96%)	-0.33	13 (1%)	65 61	8, 15, 34, 47	1 (0%)
1	D	727/753 (96%)	-0.36	21 (2%)	49 41	7, 14, 32, 48	1 (0%)
All	All	2908/3012 (96%)	-0.34	71 (2%)	56 49	7, 14, 34, 55	4 (0%)

All (71) RSRZ outliers are listed below:

Mol	Chain	Res	Type	RSRZ
1	A	27	ASP	10.0
1	A	28	SER	8.9
1	C	27	ASP	7.6
1	C	28	SER	7.5
1	A	711	ALA	7.2
1	D	28	SER	7.1
1	B	27	ASP	6.0
1	D	27	ASP	6.0
1	B	28	SER	5.8
1	B	32	GLU	5.4
1	A	710	ILE	4.1
1	B	34	GLY	4.1
1	A	32	GLU	4.1
1	D	29	LEU	4.1
1	A	29	LEU	4.0
1	D	32	GLU	3.9
1	D	35	SER	3.9
1	D	33	ASP	3.9
1	D	39	ALA	3.6
1	C	32	GLU	3.6
1	D	34	GLY	3.6

*Continued on next page...*

*Continued from previous page...*

Mol	Chain	Res	Type	RSRZ
1	A	712	ASP	3.5
1	A	34	GLY	3.5
1	A	37	ARG	3.4
1	A	35	SER	3.3
1	C	726	GLY	3.3
1	B	713	GLN	3.3
1	B	30	ALA	3.3
1	C	34	GLY	3.2
1	D	749	ASP	3.2
1	D	37	ARG	3.2
1	B	726	GLY	3.2
1	B	29	LEU	3.1
1	D	47	ALA	3.1
1	D	750	LYS	3.0
1	B	37	ARG	3.0
1	A	713	GLN	2.9
1	B	612	ARG	2.9
1	D	41	GLU	2.8
1	A	749	ASP	2.8
1	B	38	PRO	2.7
1	B	39	ALA	2.7
1	C	594	PRO	2.7
1	D	38	PRO	2.7
1	B	40	ALA	2.7
1	C	29	LEU	2.7
1	C	750	LYS	2.7
1	D	751	ILE	2.7
1	D	31	PRO	2.6
1	D	36	HIS	2.6
1	B	33	ASP	2.5
1	B	677	ASP	2.4
1	A	709	LYS	2.4
1	A	38	PRO	2.3
1	D	711	ALA	2.3
1	A	30	ALA	2.3
1	A	39	ALA	2.3
1	A	33	ASP	2.2
1	C	617	LEU	2.2
1	B	710	ILE	2.2
1	B	750	LYS	2.2
1	D	30	ALA	2.2
1	C	37	ARG	2.2

*Continued on next page...*



*Continued from previous page...*

Mol	Chain	Res	Type	RSRZ
1	B	749	ASP	2.1
1	C	749	ASP	2.1
1	C	751	ILE	2.1
1	B	568	ASP	2.1
1	D	59	ASP	2.1
1	C	583	LYS	2.0
1	D	42	PRO	2.0
1	B	712	ASP	2.0

## 6.2 Non-standard residues in protein, DNA, RNA chains ⓘ

There are no non-standard protein/DNA/RNA residues in this entry.

## 6.3 Carbohydrates ⓘ

There are no carbohydrates in this entry.

## 6.4 Ligands ⓘ

In the following table, the Atoms column lists the number of modelled atoms in the group and the number defined in the chemical component dictionary. LLDF column lists the quality of electron density of the group with respect to its neighbouring residues in protein, DNA or RNA chains. The B-factors column lists the minimum, median, 95<sup>th</sup> percentile and maximum values of B factors of atoms in the group. The column labelled 'Q< 0.9' lists the number of atoms with occupancy less than 0.9.

Mol	Type	Chain	Res	Atoms	RSR	LLDF	B-factors(Å <sup>2</sup> )	Q<0.9
2	HDD	B	760	44/44	0.07	0.19	7,10,15,18	0
2	HDD	D	760	44/44	0.07	0.07	7,9,15,16	0
2	HDD	C	760	44/44	0.07	-0.06	8,11,15,16	0
2	HDD	A	760	44/44	0.07	-0.16	7,9,14,17	0

## 6.5 Other polymers ⓘ

There are no such residues in this entry.