



wwPDB X-ray Structure Validation Summary Report

Feb 28, 2014 – 01:20 PM GMT

PDB ID : 1P8I
Title : F219L BACTERIORHODOPSIN MUTANT
Authors : Lanyi, J.K.
Deposited on : 2003-05-07
Resolution : 1.86 Å(reported)

This is a wwPDB validation summary report for a publicly released PDB entry.

We welcome your comments at validation@mail.wwpdb.org

A user guide is available at <http://wwpdb.org/ValidationPDFNotes.html>

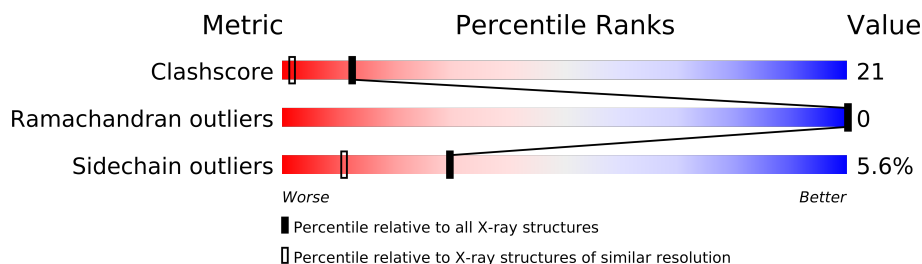
The following versions of software and data (see [references](#)) were used in the production of this report:

MolProbity	:	4.02b-467
Mogul	:	1.15 2013
Xtriage (Phenix)	:	NOT EXECUTED
EDS	:	NOT EXECUTED
Percentile statistics	:	21963
Ideal geometry (proteins)	:	Engh & Huber (2001)
Ideal geometry (DNA, RNA)	:	Parkinson et. al. (1996)
Validation Pipeline (wwPDB-VP)	:	stable22683

1 Overall quality at a glance

The reported resolution of this entry is 1.86 Å.


Percentile scores (ranging between 0-100) for global validation metrics of the entry are shown in the following graphic. The table shows the number of entries on which the scores are based.



Metric	Whole archive (#Entries)	Similar resolution (#Entries, resolution range(Å))
Clashscore	79885	1470 (1.86-1.86)
Ramachandran outliers	78287	1451 (1.86-1.86)
Sidechain outliers	78261	1451 (1.86-1.86)

The table below summarises the geometric issues observed across the polymeric chains and their fit to the electron density. The red, orange, yellow and green segments on the lower bar indicate the fraction of residues that contain outliers for ≥ 3 , 2, 1 and 0 types of geometric quality criteria. The upper red bar (where present) indicates the fraction of residues that have poor fit to the electron density.

Note EDS was not executed.

Mol	Chain	Length	Quality of chain
1	A	249	

2 Entry composition i

There are 5 unique types of molecules in this entry. The entry contains 2070 atoms, of which 0 are hydrogen and 0 are deuterium.

In the tables below, the ZeroOcc column contains the number of atoms modelled with zero occupancy, the AltConf column contains the number of residues with at least one atom in alternate conformation and the Trace column contains the number of residues modelled with at most 2 atoms.

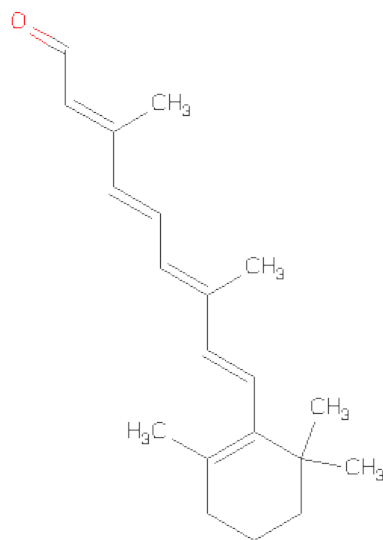
- Molecule 1 is a protein called Bacteriorhodopsin.

Mol	Chain	Residues	Atoms					ZeroOcc	AltConf	Trace
			Total	C	N	O	S			
1	A	222	1717	1156	262	290	9	0	0	0

There is a discrepancy between the modelled and reference sequences:

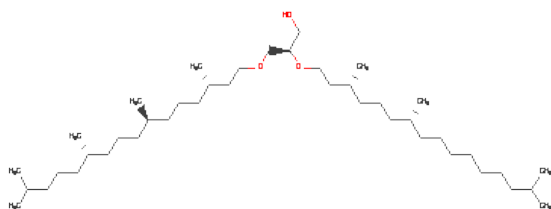
Chain	Residue	Modelled	Actual	Comment	Reference
A	219	LEU	PHE	ENGINEERED	UNP P02945

- Molecule 2 is RETINAL (three-letter code: RET) (formula: C₂₀H₂₈O).



Mol	Chain	Residues	Atoms		ZeroOcc	AltConf
			Total	C		
2	A	1	20	20	0	0

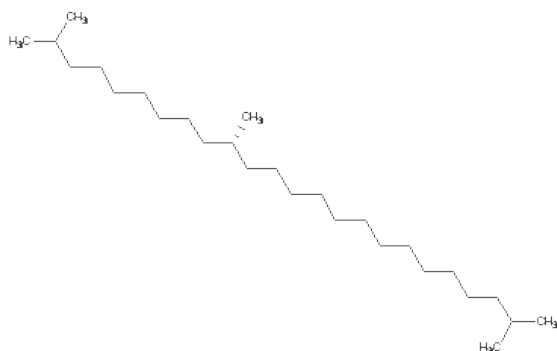
- Molecule 3 is 1-[2,6,10,14-TETRAMETHYL-HEXADECAN-16-YL]-2-[2,10,14-TRIMETHYLHEXADECAN-16-YL]GLYCEROL (three-letter code: LI1) (formula: C₄₂H₈₆O₃).



Mol	Chain	Residues	Atoms			ZeroOcc	AltConf
3	A	1	Total	C	O	0	0
			31	28	3		
3	A	1	Total	C	O	0	0
			41	38	3		
3	A	1	Total	C		0	0
			17	17			
3	A	1	Total	C		0	0
			16	16			
3	A	1	Total	C		0	0
			8	8			
3	A	1	Total	C		0	0
			8	8			
3	A	1	Total	C	O	0	0
			38	35	3		
3	A	1	Total	C		0	0
			18	18			
3	A	1	Total	C		0	0
			16	16			
3	A	1	Total	C	O	0	0
			40	37	3		
3	A	1	Total	C		0	0
			17	17			
3	A	1	Total	C		0	0
			18	18			
3	A	1	Total	C		0	0
			13	13			

- Molecule 4 is 2,10,23-TRIMETHYL-TETRACOSANE (three-letter code: SQU) (formula:

C₂₇H₅₆).



Mol	Chain	Residues	Atoms	ZeroOcc	AltConf
4	A	1	Total C 27 27	0	0

- Molecule 5 is water.

Mol	Chain	Residues	Atoms	ZeroOcc	AltConf
5	A	25	Total O 25 25	0	0

4 Data and refinement statistics

Xtriage (Phenix) and EDS were not executed - this section will therefore be incomplete.

Property	Value	Source
Space group	P 63	Depositor
Cell constants a, b, c, α , β , γ	61.07Å 61.07Å 110.23Å 90.00° 90.00° 120.00°	Depositor
Resolution (Å)	25.00 – 1.86	Depositor
% Data completeness (in resolution range)	99.5 (25.00-1.86)	Depositor
R_{merge}	0.08	Depositor
R_{sym}	(Not available)	Depositor
Refinement program	SHELXL-97	Depositor
R, R_{free}	0.199 , 0.220	Depositor
Estimated twinning fraction	No twinning to report.	Xtriage
Total number of atoms	2070	wwPDB-VP
Average B, all atoms (Å ²)	31.0	wwPDB-VP

5 Model quality

5.1 Standard geometry

Bond lengths and bond angles in the following residue types are not validated in this section: SQU, RET, LI1

The Z score for a bond length (or angle) is the number of standard deviations the observed value is removed from the expected value. A bond length (or angle) with $|Z| > 5$ is considered an outlier worth inspection. RMSZ is the root-mean-square of all Z scores of the bond lengths (or angles).

Mol	Chain	Bond lengths		Bond angles	
		RMSZ	$\# Z > 5$	RMSZ	$\# Z > 5$
1	A	0.62	1/1763 (0.1%)	1.23	5/2408 (0.2%)

All (1) bond length outliers are listed below:

Mol	Chain	Res	Type	Atoms	Z	Observed(Å)	Ideal(Å)
1	A	219	LEU	C-N	5.57	1.43	1.33

All (5) bond angle outliers are listed below:

Mol	Chain	Res	Type	Atoms	Z	Observed(°)	Ideal(°)
1	A	175	ARG	NE-CZ-NH1	9.68	125.14	120.30
1	A	7	ARG	NE-CZ-NH1	7.96	124.28	120.30
1	A	219	LEU	CA-CB-CG	6.84	131.03	115.30
1	A	57	TYR	CB-CG-CD1	-5.22	117.87	121.00
1	A	135	PHE	CB-CG-CD1	-5.01	117.29	120.80

There are no chirality outliers.

There are no planarity outliers.

5.2 Close contacts

In the following table, the Non-H and H(model) columns list the number of non-hydrogen atoms and hydrogen atoms in the chain respectively. The H(added) column lists the number of hydrogens added by MolProbity. The Clashes column lists the number of clashes within the asymmetric unit, and the number in parentheses is this value normalized per 1000 atoms of the molecule in the chain. The Symm-Clashes column gives symmetry related clashes, in the same way as for the Clashes column.

Mol	Chain	Non-H	H(model)	H(added)	Clashes	Symm-Clashes
1	A	1717	0	1778	57	1
2	A	20	0	27	2	0
3	A	281	0	441	58	1
4	A	27	0	53	9	0
5	A	25	0	0	2	0
All	All	2070	0	2299	92	1

Clashscore is defined as the number of clashes calculated for the entry per 1000 atoms (including hydrogens) of the entry. The overall clashscore for this entry is 21.

The worst 5 of 92 close contacts within the same asymmetric unit are listed below.

Atom-1	Atom-2	Distance(Å)	Clash(Å)
3:A:613:LI1:C18	3:A:613:LI1:C19	1.85	1.51
3:A:602:LI1:O3	3:A:602:LI1:C3	1.72	1.38
1:A:180:VAL:HG21	3:A:610:LI1:H512	1.36	1.07
3:A:613:LI1:C17	3:A:613:LI1:C19	2.30	1.07
1:A:131:TYR:CE2	3:A:602:LI1:H112	1.91	1.04

All (1) symmetry-related close contacts are listed below. The label for Atom-2 includes the symmetry operator and encoded unit-cell translations to be applied.

Atom-1	Atom-2	Distance(Å)	Clash(Å)
1:A:163:MET:O	3:A:602:LI1:O3[6_655]	2.04	0.16

5.3 Torsion angles

5.3.1 Protein backbone ⓘ

In the following table, the Percentiles column shows the percent Ramachandran outliers of the chain as a percentile score with respect to all X-ray entries followed by that with respect to entries of similar resolution. The Analysed column shows the number of residues for which the backbone conformation was analysed, and the total number of residues.

Mol	Chain	Analysed	Favoured	Allowed	Outliers	Percentiles
1	A	218/249 (88%)	217 (100%)	1 (0%)	0	100 100

There are no Ramachandran outliers to report.

5.3.2 Protein sidechains ⓘ

In the following table, the Percentiles column shows the percent sidechain outliers of the chain as a percentile score with respect to all X-ray entries followed by that with respect to entries of similar resolution. The Analysed column shows the number of residues for which the sidechain conformation was analysed, and the total number of residues.

Mol	Chain	Analysed	Rotameric	Outliers	Percentiles	
1	A	178/195 (91%)	168 (94%)	10 (6%)	30	11

5 of 10 residues with a non-rotameric sidechain are listed below:

Mol	Chain	Res	Type
1	A	162	SER
1	A	163	MET
1	A	166	GLU
1	A	95	LEU
1	A	164	ARG

Some sidechains can be flipped to improve hydrogen bonding and reduce clashes. All (3) such sidechains are listed below:

Mol	Chain	Res	Type
1	A	105	GLN
1	A	176	ASN
1	A	202	ASN

5.3.3 RNA ⓘ

There are no RNA chains in this entry.

5.4 Non-standard residues in protein, DNA, RNA chains ⓘ

There are no non-standard protein/DNA/RNA residues in this entry.

5.5 Carbohydrates ⓘ

There are no carbohydrates in this entry.

5.6 Ligand geometry ⓘ

15 ligands are modelled in this entry.

In the following table, the Counts columns list the number of bonds (or angles) for which Mogul statistics could be retrieved, the number of bonds (or angles) that are observed in the model and the number of bonds (or angles) that are defined in the chemical component dictionary. The Link column lists molecule types, if any, to which the group is linked. The Z score for a bond length (or angle) is the number of standard deviations the observed value is removed from the expected value. A bond length (or angle) with $|Z| > 2$ is considered an outlier worth inspection. RMSZ is the root-mean-square of all Z scores of the bond lengths (or angles).

Mol	Type	Chain	Res	Link	Bond lengths			Bond angles		
					Counts	RMSZ	$\# Z > 2$	Counts	RMSZ	$\# Z > 2$
2	RET	A	301	1	19,20,21	0.95	1 (5%)	26,27,28	2.53	9 (34%)
3	LI1	A	601	-	29,30,44	1.79	6 (20%)	22,31,51	1.23	3 (13%)
3	LI1	A	602	-	40,40,44	1.75	5 (12%)	43,45,51	2.30	14 (32%)
3	LI1	A	603	-	16,16,44	1.10	1 (6%)	10,16,51	0.73	0
3	LI1	A	604	-	15,15,44	3.32	3 (20%)	7,14,51	0.85	0
3	LI1	A	605	-	6,7,44	2.23	2 (33%)	3,6,51	1.70	1 (33%)
3	LI1	A	606	-	6,7,44	2.26	1 (16%)	3,6,51	1.65	1 (33%)
3	LI1	A	607	-	36,37,44	1.41	4 (11%)	28,38,51	2.20	4 (14%)
3	LI1	A	608	-	17,17,44	0.99	0	14,18,51	2.44	4 (28%)
3	LI1	A	609	-	15,15,44	3.12	2 (13%)	7,14,51	0.87	0
3	LI1	A	610	-	39,39,44	1.90	10 (25%)	31,41,51	1.24	4 (12%)
3	LI1	A	611	-	16,16,44	1.82	3 (18%)	17,18,51	4.38	9 (52%)
3	LI1	A	612	-	17,17,44	9.60	1 (5%)	13,18,51	1.27	2 (15%)
3	LI1	A	613	-	12,12,44	3.96	3 (25%)	9,12,51	3.48	5 (55%)
4	SQU	A	701	-	26,26,26	1.27	4 (15%)	28,28,28	1.73	8 (28%)

In the following table, the Chirals column lists the number of chiral outliers, the number of chiral centers analysed, the number of these observed in the model and the number defined in the chemical component dictionary. Similar counts are reported in the Torsion and Rings columns. '-' means no outliers of that kind were identified.

Mol	Type	Chain	Res	Link	Chirals	Torsions	Rings
2	RET	A	301	1	-	0/13/30/31	0/1/1/1
3	LI1	A	601	-	1/1/2/8	0/29/30/49	0/0/0/0
3	LI1	A	602	-	-	0/44/44/49	0/0/0/0
3	LI1	A	603	-	-	0/14/14/49	0/0/0/0
3	LI1	A	604	-	-	0/12/13/49	0/0/0/0
3	LI1	A	605	-	-	0/5/5/49	0/0/0/0
3	LI1	A	606	-	-	0/5/5/49	0/0/0/0
3	LI1	A	607	-	-	0/37/38/49	0/0/0/0
3	LI1	A	608	-	-	0/16/16/49	0/0/0/0

Continued on next page...

Continued from previous page...

Mol	Type	Chain	Res	Link	Chirals	Torsions	Rings
3	LI1	A	609	-	-	0/12/13/49	0/0/0/0
3	LI1	A	610	-	-	0/39/39/49	0/0/0/0
3	LI1	A	611	-	2/2/3/8	0/17/17/49	0/0/0/0
3	LI1	A	612	-	-	0/16/16/49	0/0/0/0
3	LI1	A	613	-	1/1/1/8	0/10/11/49	0/0/0/0
4	SQU	A	701	-	1/1/3/3	0/25/25/25	0/0/0/0

The worst 5 of 46 bond length outliers are listed below:

Mol	Chain	Res	Type	Atoms	Z	Observed(Å)	Ideal(Å)
3	A	612	LI1	C11-C12	39.38	1.70	1.55
3	A	604	LI1	C11-C12	9.86	1.59	1.55
3	A	613	LI1	C19-C18	9.32	1.85	1.52
3	A	609	LI1	C11-C12	9.25	1.58	1.55
3	A	613	LI1	C11-C12	9.09	1.58	1.55

The worst 5 of 64 bond angle outliers are listed below:

Mol	Chain	Res	Type	Atoms	Z	Observed(°)	Ideal(°)
3	A	611	LI1	C19-C18-C17	-11.20	69.93	111.02
3	A	611	LI1	C20-C18-C17	9.31	159.94	111.92
3	A	607	LI1	C44-C43-C42	9.30	145.17	111.02
2	A	301	RET	C11-C10-C9	-8.39	115.20	127.29
3	A	602	LI1	C24-C23-C25	-7.56	83.26	111.02

All (5) chirality outliers are listed below:

Mol	Chain	Res	Type	Atom
3	A	613	LI1	C18
4	A	701	SQU	C12
3	A	611	LI1	C18
3	A	611	LI1	C13
3	A	601	LI1	C2

There are no torsion outliers.

There are no ring outliers.

5.7 Other polymers ⓘ

There are no such residues in this entry.

5.8 Polymer linkage issues

There are no chain breaks in this entry.

6 Fit of model and data ⓘ

6.1 Protein, DNA and RNA chains ⓘ

EDS was not executed - this section will therefore be empty.

6.2 Non-standard residues in protein, DNA, RNA chains ⓘ

EDS was not executed - this section will therefore be empty.

6.3 Carbohydrates ⓘ

EDS was not executed - this section will therefore be empty.

6.4 Ligands ⓘ

EDS was not executed - this section will therefore be empty.

6.5 Other polymers ⓘ

EDS was not executed - this section will therefore be empty.