



Full wwPDB X-ray Structure Validation Report

Feb 28, 2014 – 09:41 AM GMT

PDB ID : 2P8S
Title : Human dipeptidyl peptidase IV/CD26 in complex with a cyclohexalamine inhibitor
Authors : Scapin, G.; Biftu, T.
Deposited on : 2007-03-23
Resolution : 2.20 Å(reported)

This is a full wwPDB validation report for a publicly released PDB entry.
We welcome your comments at validation@mail.wwpdb.org
A user guide is available at <http://wwpdb.org/ValidationPDFNotes.html>

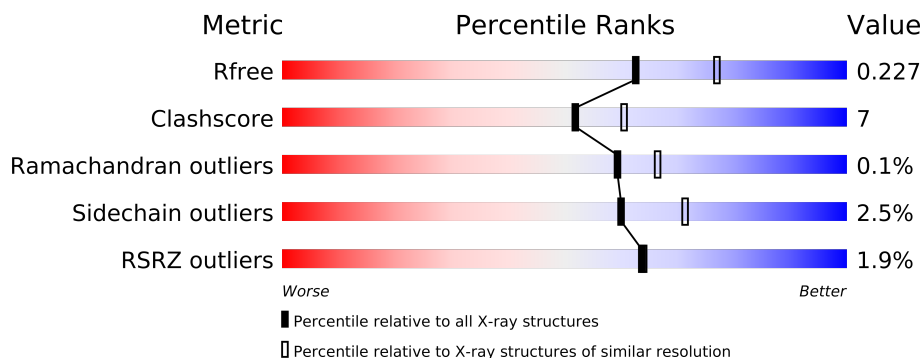
The following versions of software and data (see [references](#)) were used in the production of this report:

MolProbity : 4.02b-467
Mogul : 1.15 2013
Xtriage (Phenix) : dev-1323
EDS : stable22639
Percentile statistics : 21963
Refmac : 5.8.0049
CCP4 : 6.3.0 (Settle)
Ideal geometry (proteins) : Engh & Huber (2001)
Ideal geometry (DNA, RNA) : Parkinson et. al. (1996)
Validation Pipeline (wwPDB-VP) : stable22683

1 Overall quality at a glance

The reported resolution of this entry is 2.20 Å.

Percentile scores (ranging between 0-100) for global validation metrics of the entry are shown in the following graphic. The table shows the number of entries on which the scores are based.



Metric	Whole archive (#Entries)	Similar resolution (#Entries, resolution range(Å))
R_{free}	66092	2938 (2.20-2.20)
Clashscore	79885	3751 (2.20-2.20)
Ramachandran outliers	78287	3681 (2.20-2.20)
Sidechain outliers	78261	3682 (2.20-2.20)
RSRZ outliers	66119	2939 (2.20-2.20)

The table below summarises the geometric issues observed across the polymeric chains and their fit to the electron density. The red, orange, yellow and green segments on the lower bar indicate the fraction of residues that contain outliers for ≥ 3 , 2, 1 and 0 types of geometric quality criteria. The upper red bar (where present) indicates the fraction of residues that have poor fit to the electron density.

Mol	Chain	Length	Quality of chain
1	A	728	
1	B	728	

The following table lists non-polymeric compounds that are outliers for geometric or electron-density-fit criteria:

Mol	Type	Chain	Res	Geometry	Electron density
3	NAG	A	1520	-	X
3	NAG	B	2150	-	X
3	NAG	B	2321	-	X
5	417	A	1001[A]	-	X
5	417	A	1001[B]	-	X
5	417	B	1002[A]	-	X
5	417	B	1002[B]	-	X

2 Entry composition

There are 6 unique types of molecules in this entry. The entry contains 13442 atoms, of which 0 are hydrogen and 0 are deuterium.

In the tables below, the ZeroOcc column contains the number of atoms modelled with zero occupancy, the AltConf column contains the number of residues with at least one atom in alternate conformation and the Trace column contains the number of residues modelled with at most 2 atoms.

- Molecule 1 is a protein called DIPEPTIDYL PEPTIDASE IV SOLUBLE FORM.

Mol	Chain	Residues	Atoms					ZeroOcc	AltConf	Trace
1	A	728	Total	C	N	O	S	0	5	0
			6000	3846	990	1138	26			
1	B	728	Total	C	N	O	S	0	4	0
			5994	3844	988	1136	26			

There are 2 discrepancies between the modelled and reference sequences:

Chain	Residue	Modelled	Actual	Comment	Reference
A	39	THR	SER	CLONING ARTIFACT	UNP P27487
B	39	THR	SER	CLONING ARTIFACT	UNP P27487

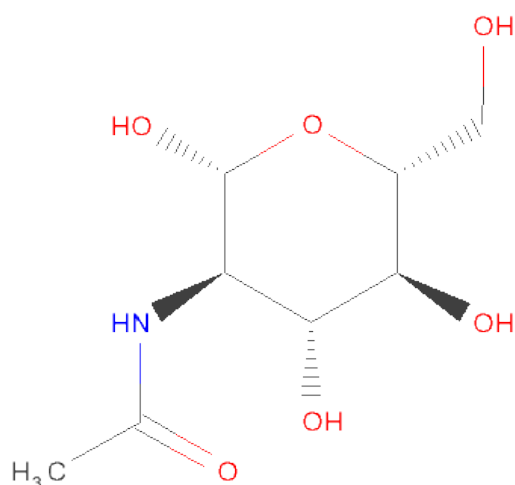
- Molecule 2 is a polymer of unknown type called SUGAR (2-MER).

Mol	Chain	Residues	Atoms				ZeroOcc	AltConf
2	A	2	Total	C	N	O	0	0
			28	16	2	10		
2	A	2	Total	C	N	O	0	0
			28	16	2	10		
2	A	2	Total	C	N	O	0	0
			28	16	2	10		
2	A	2	Total	C	N	O	0	0
			28	16	2	10		
2	A	2	Total	C	N	O	0	0
			28	16	2	10		
2	B	2	Total	C	N	O	0	0
			28	16	2	10		
2	B	2	Total	C	N	O	0	0
			28	16	2	10		
2	B	2	Total	C	N	O	0	0
			28	16	2	10		
2	B	2	Total	C	N	O	0	0
			28	16	2	10		

There are 9 discrepancies between the modelled and reference sequences:

Chain	Residue	Modelled	Actual	Comment	Reference
A	39	THR	SER	CLONING ARTIFACT	UNP P27487
A	39	THR	SER	CLONING ARTIFACT	UNP P27487
A	39	THR	SER	CLONING ARTIFACT	UNP P27487
A	39	THR	SER	CLONING ARTIFACT	UNP P27487
A	39	THR	SER	CLONING ARTIFACT	UNP P27487
B	39	THR	SER	CLONING ARTIFACT	UNP P27487
B	39	THR	SER	CLONING ARTIFACT	UNP P27487
B	39	THR	SER	CLONING ARTIFACT	UNP P27487
B	39	THR	SER	CLONING ARTIFACT	UNP P27487

- Molecule 3 is SUGAR (N-ACETYL-D-GLUCOSAMINE) (three-letter code: NAG) (formula: $C_8H_{15}NO_6$).

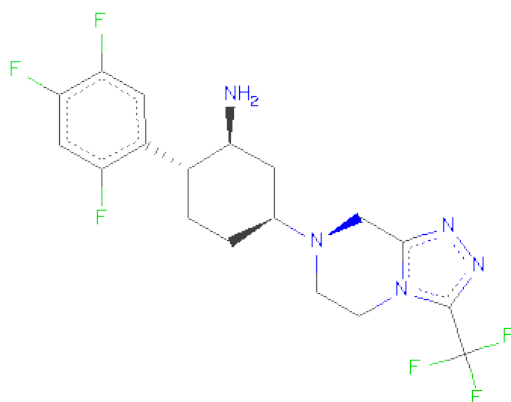


Mol	Chain	Residues	Atoms				ZeroOcc	AltConf
3	A	1	Total	C	N	O	0	0
			14	8	1	5		
3	A	1	Total	C	N	O	0	0
			14	8	1	5		
3	A	1	Total	C	N	O	0	0
			14	8	1	5		
3	B	1	Total	C	N	O	0	0
			14	8	1	5		
3	B	1	Total	C	N	O	0	0
			14	8	1	5		
3	B	1	Total	C	N	O	0	0
			14	8	1	5		

- Molecule 4 is SODIUM ION (three-letter code: NA) (formula: Na).

Mol	Chain	Residues	Atoms		ZeroOcc	AltConf
4	A	1	Total	Na	0	0
			1	1		

- Molecule 5 is (1S,2R,5S)-5-[3-(TRIFLUOROMETHYL)-5,6-DIHYDRO[1,2,4]TRIAZOL O[4,3-A]PYRAZIN-7(8H)-YL]-2-(2,4,5-TRIFLUOROPHENYL)CYCLOHEXANAMINE (three-letter code: 417) (formula: C₁₈H₁₉F₆N₅).



Mol	Chain	Residues	Atoms				ZeroOcc	AltConf
5	A	1	Total	C	F	N	0	1
			58	36	12	10		
5	B	1	Total	C	F	N	0	1
			58	36	12	10		

- Molecule 6 is water.

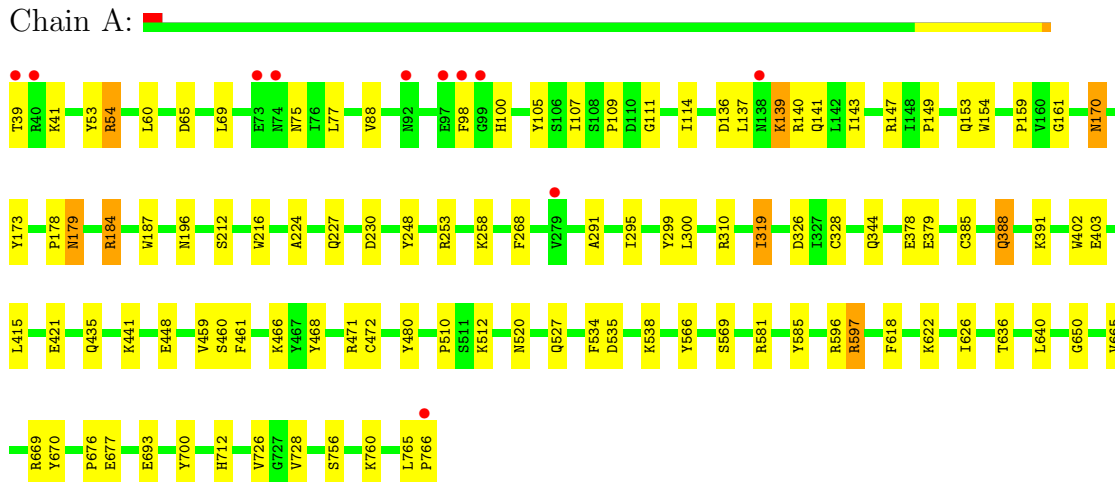
Mol	Chain	Residues	Atoms		ZeroOcc	AltConf
6	A	504	Total	O	0	0
			504	504		
6	B	491	Total	O	0	0
			491	491		

3 Residue-property plots

These plots are drawn for all protein, RNA and DNA chains in the entry. The first graphic for a chain summarises the proportions of errors displayed in the second graphic. The second graphic shows the sequence view annotated by issues in geometry and electron density. Residues are color-coded according to the number of geometric quality criteria for which they contain at least one outlier: green = 0, yellow = 1, orange = 2 and red = 3 or more. A red dot above a residue indicates a poor fit to the electron density ($RSRZ > 2$). Stretches of 2 or more consecutive residues without any outlier are shown as a green connector. Residues present in the sample, but not in the model, are shown in grey.

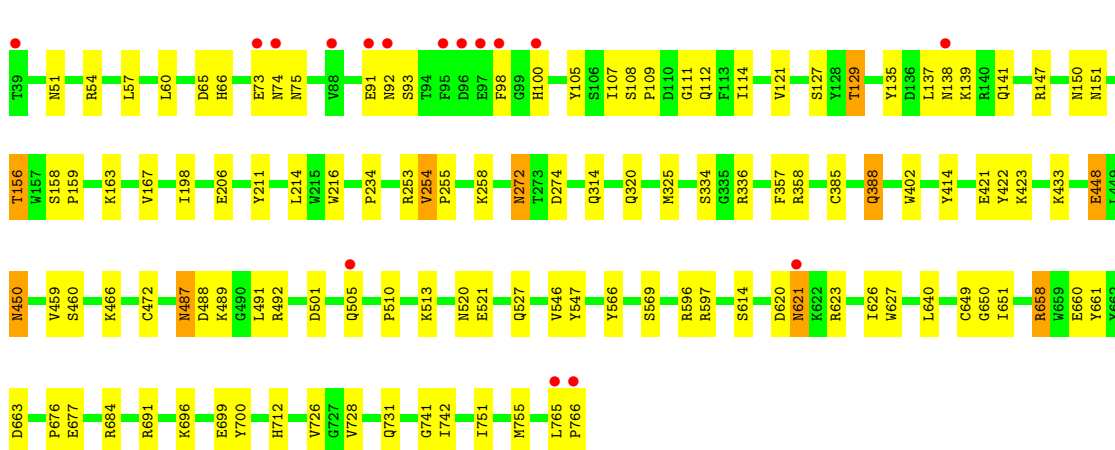
• Molecule 1: DIPEPTIDYL PEPTIDASE IV SOLUBLE FORM

Chain A:



• Molecule 1: DIPEPTIDYL PEPTIDASE IV SOLUBLE FORM

Chain B:



4 Data and refinement statistics

Property	Value	Source
Space group	P 21 21 21	Depositor
Cell constants a, b, c, α , β , γ	118.14Å 126.17Å 137.34Å 90.00° 90.00° 90.00°	Depositor
Resolution (Å)	30.00 – 2.20 46.46 – 2.20	Depositor EDS
% Data completeness (in resolution range)	98.9 (30.00-2.20) 98.8 (46.46-2.20)	Depositor EDS
R_{merge}	0.09	Depositor
R_{sym}	(Not available)	Depositor
$\langle I/\sigma(I) \rangle$ ¹	3.67 (at 2.20Å)	Xtriage
Refinement program	CNX	Depositor
R, R_{free}	0.186 , 0.227 0.186 , 0.227	Depositor DCC
R_{free} test set	5222 reflections (5.32%)	DCC
Wilson B-factor (Å ²)	27.2	Xtriage
Anisotropy	0.389	Xtriage
Bulk solvent k_{sol} (e/Å ³), B_{sol} (Å ²)	0.36 , 32.9	EDS
Estimated twinning fraction	No twinning to report.	Xtriage
L-test for twinning	$\langle L \rangle = 0.49$, $\langle L^2 \rangle = 0.32$	Xtriage
Outliers	1 of 103448 reflections (0.001%)	Xtriage
F_o, F_c correlation	0.95	EDS
Total number of atoms	13442	wwPDB-VP
Average B, all atoms (Å ²)	28.0	wwPDB-VP

Xtriage's analysis on translational NCS is as follows: *The largest off-origin peak in the Patterson function is 2.89% of the height of the origin peak. No significant pseudotranslation is detected.*

¹Intensities estimated from amplitudes.

5 Model quality

5.1 Standard geometry

Bond lengths and bond angles in the following residue types are not validated in this section: NA, 417, NAG

The Z score for a bond length (or angle) is the number of standard deviations the observed value is removed from the expected value. A bond length (or angle) with $|Z| > 5$ is considered an outlier worth inspection. RMSZ is the root-mean-square of all Z scores of the bond lengths (or angles).

Mol	Chain	Bond lengths		Bond angles	
		RMSZ	# Z >5	RMSZ	# Z >5
1	A	0.48	0/6172	0.68	2/8392 (0.0%)
1	B	0.48	0/6166	0.67	1/8386 (0.0%)
All	All	0.48	0/12338	0.67	3/16778 (0.0%)

Chiral center outliers are detected by calculating the chiral volume of a chiral center and verifying if the center is modelled as a planar moiety or with the opposite hand. A planarity outlier is detected by checking planarity of atoms in a peptide group, atoms in a mainchain group or atoms of a sidechain that are expected to be planar.

Mol	Chain	#Chirality outliers	#Planarity outliers
1	A	0	1
1	B	0	1
2	A	3	0
All	All	3	2

There are no bond length outliers.

All (3) bond angle outliers are listed below:

Mol	Chain	Res	Type	Atoms	Z	Observed(°)	Ideal(°)
1	A	319	ILE	N-CA-C	-5.78	95.41	111.00
1	B	388	GLN	N-CA-C	-5.26	96.79	111.00
1	A	300	LEU	N-CA-C	-5.01	97.48	111.00

All (3) chirality outliers are listed below:

Mol	Chain	Res	Type	Atom
2	A	1086	NAG	C1
2	A	1150	NAG	C1
2	A	1230	NAG	C1

All (2) planarity outliers are listed below:

Mol	Chain	Res	Type	Group
1	A	700	TYR	Sidechain
1	B	700	TYR	Sidechain

5.2 Close contacts

In the following table, the Non-H and H(model) columns list the number of non-hydrogen atoms and hydrogen atoms in the chain respectively. The H(added) column lists the number of hydrogens added by MolProbity. The Clashes column lists the number of clashes within the asymmetric unit, and the number in parentheses is this value normalized per 1000 atoms of the molecule in the chain. The Symm-Clashes column gives symmetry related clashes, in the same way as for the Clashes column.

Mol	Chain	Non-H	H(model)	H(added)	Clashes	Symm-Clashes
1	A	6000	0	5704	73	0
1	B	5994	0	5701	90	0
2	A	140	0	125	11	0
2	B	112	0	100	5	0
3	A	42	0	39	3	0
3	B	42	0	39	7	0
4	A	1	0	0	0	0
5	A	58	0	38	0	0
5	B	58	0	38	2	0
6	A	504	0	0	5	0
6	B	491	0	0	9	0
All	All	13442	0	11784	174	0

Clashscore is defined as the number of clashes calculated for the entry per 1000 atoms (including hydrogens) of the entry. The overall clashscore for this entry is 7.

All (174) close contacts within the same asymmetric unit are listed below.

Atom-1	Atom-2	Distance(Å)	Clash(Å)
1:B:147:ARG:HE	3:B:2150:NAG:H83	1.17	1.08
1:A:253:ARG:HH21	1:B:253:ARG:HH21	0.95	0.89
1:A:75:ASN:HD21	3:A:1092:NAG:HN2	1.16	0.88
1:A:149:PRO:HA	2:A:1150:NAG:H82	1.56	0.87
2:B:2085:NAG:H4	2:B:2086:NAG:N2	1.93	0.84
1:B:726:VAL:HG23	1:B:728:VAL:HG23	1.61	0.82
1:B:640:LEU:HD11	1:B:650:GLY:HA3	1.62	0.80
1:B:75:ASN:HD21	3:B:2092:NAG:HN2	1.30	0.80
1:A:253:ARG:NH2	1:B:253:ARG:HH21	1.80	0.76
1:B:258:LYS:HZ3	1:B:712:HIS:HD2	1.36	0.73

Continued on next page...

Continued from previous page...

Atom-1	Atom-2	Distance(Å)	Clash(Å)
1:A:153:GLN:HE22	1:A:170:ASN:ND2	1.86	0.73
1:B:91:GLU:HG3	1:B:93:SER:H	1.53	0.73
1:A:676:PRO:HG2	1:A:677:GLU:OE2	1.88	0.73
1:B:272:ASN:C	1:B:272:ASN:HD22	1.93	0.72
1:A:179:ASN:H	1:A:179:ASN:HD22	1.38	0.71
1:A:581:ARG:NH1	3:A:1520:NAG:H62	2.06	0.71
1:A:581:ARG:CZ	3:A:1520:NAG:H62	2.22	0.70
1:B:258:LYS:NZ	1:B:712:HIS:HD2	1.89	0.69
1:B:272:ASN:HD21	1:B:274:ASP:HB2	1.57	0.69
1:A:596:ARG:O	1:A:597:ARG:HD3	1.94	0.68
1:B:147:ARG:NE	3:B:2150:NAG:H83	2.02	0.68
1:B:658:ARG:HG2	1:B:661:TYR:CE2	2.27	0.68
1:B:258:LYS:HZ3	1:B:712:HIS:CD2	2.12	0.67
1:B:596:ARG:O	1:B:597:ARG:HD2	1.95	0.67
2:B:2085:NAG:H61	2:B:2086:NAG:C7	2.25	0.67
1:A:77:LEU:HD23	1:A:88:VAL:HA	1.78	0.66
1:B:114:ILE:HG23	1:B:135:TYR:HB3	1.78	0.65
1:A:640:LEU:HD11	1:A:650:GLY:HA3	1.78	0.65
1:A:253:ARG:HH21	1:B:253:ARG:NH2	1.80	0.64
1:B:121:VAL:HB	1:B:129:THR:OG1	1.97	0.64
1:B:620:ASP:OD2	1:B:623:ARG:HD3	1.97	0.64
1:A:471[A]:ARG:HG3	1:A:480:TYR:CE2	2.32	0.64
1:B:75:ASN:ND2	3:B:2092:NAG:HN2	1.96	0.63
1:B:696:LYS:HG3	1:B:728:VAL:HG22	1.80	0.63
1:A:258:LYS:NZ	1:A:712:HIS:HD2	1.96	0.63
1:B:691:ARG:HD2	6:B:2363:HOH:O	1.99	0.63
1:A:139:LYS:HB3	1:A:139:LYS:NZ	2.13	0.62
1:B:272:ASN:ND2	1:B:274:ASP:H	1.97	0.62
1:A:136:ASP:HB3	1:A:139:LYS:HG2	1.81	0.62
1:A:184:ARG:HH11	1:A:187:TRP:HA	1.65	0.62
1:B:114:ILE:CG2	1:B:135:TYR:HB3	2.30	0.62
1:B:75:ASN:HD21	3:B:2092:NAG:C1	2.14	0.61
1:A:65:ASP:OD2	1:A:466:LYS:HB2	2.00	0.61
2:B:2085:NAG:H4	2:B:2086:NAG:HN2	1.64	0.61
1:A:173:TYR:CE2	1:A:184:ARG:HG2	2.36	0.60
1:A:388:GLN:HB3	1:A:391:LYS:HB2	1.83	0.60
1:A:535:ASP:OD1	1:A:538:LYS:HE2	2.02	0.60
1:A:111:GLY:O	1:A:137:LEU:HD12	2.01	0.60
1:B:272:ASN:HD22	1:B:274:ASP:H	1.52	0.58
1:A:435:GLN:NE2	1:A:441:LYS:HD2	2.19	0.58
1:A:170:ASN:N	1:A:170:ASN:HD22	2.02	0.57
1:A:179:ASN:N	1:A:179:ASN:HD22	2.02	0.57

Continued on next page...

Continued from previous page...

Atom-1	Atom-2	Distance(Å)	Clash(Å)
2:A:1230:NAG:O7	2:A:1230:NAG:H3	2.04	0.57
2:A:1229:NAG:H62	2:A:1230:NAG:O5	2.05	0.56
1:B:107:ILE:HG22	1:B:108:SER:O	2.06	0.55
1:B:358:ARG:HD2	6:B:2788:HOH:O	2.07	0.55
1:A:69:LEU:HD13	1:A:107:ILE:HD12	1.89	0.54
1:A:248:TYR:CZ	1:B:234:PRO:HB2	2.41	0.54
1:B:676:PRO:HG2	1:B:677:GLU:OE2	2.07	0.53
1:A:388:GLN:CB	1:A:391:LYS:HB2	2.39	0.53
1:A:184:ARG:NH1	1:A:187:TRP:HA	2.23	0.53
1:B:51[A]:ASN:HD21	1:B:54:ARG:HG3	1.74	0.52
1:B:65:ASP:OD2	1:B:466:LYS:HB2	2.09	0.52
1:A:402:TRP:CD2	1:A:421:GLU:HB2	2.45	0.52
1:A:154:TRP:CE2	1:A:212[A]:SER:HB2	2.45	0.52
1:A:726:VAL:HG23	1:A:728:VAL:HG23	1.91	0.52
2:A:1151:NAG:O7	2:A:1151:NAG:H3	2.10	0.51
1:B:731:GLN:NE2	6:B:2470:HOH:O	2.44	0.51
1:B:60:LEU:HD12	1:B:60:LEU:C	2.31	0.51
1:B:501:ASP:O	1:B:505:GLN:HG2	2.10	0.51
1:B:520:ASN:O	1:B:521:GLU:HB2	2.10	0.50
1:A:154:TRP:CE2	1:A:212[B]:SER:HB3	2.46	0.50
2:B:2085:NAG:C4	2:B:2086:NAG:N2	2.71	0.50
2:A:1321:NAG:H61	2:A:1322:NAG:O5	2.11	0.49
1:A:622:LYS:HE2	6:A:9341:HOH:O	2.11	0.49
1:A:54:ARG:HG3	6:A:9368:HOH:O	2.11	0.49
1:B:150:ASN:O	1:B:151:ASN:HB2	2.12	0.49
1:B:487:ASN:HD22	1:B:487:ASN:C	2.14	0.49
1:B:109:PRO:HG2	1:B:158:SER:O	2.12	0.49
1:A:149:PRO:HA	2:A:1150:NAG:C8	2.36	0.49
1:B:129:THR:HB	6:B:2795:HOH:O	2.11	0.49
1:A:98:PHE:CE2	1:A:100:HIS:HB2	2.48	0.49
1:B:272:ASN:C	1:B:272:ASN:ND2	2.65	0.48
1:B:658:ARG:HG3	1:B:658:ARG:O	2.12	0.48
1:B:75:ASN:HD21	1:B:92:ASN:ND2	2.11	0.48
1:B:487:ASN:HD22	1:B:488:ASP:N	2.11	0.48
1:A:510:PRO:HD3	1:A:569:SER:HB2	1.95	0.48
1:B:487:ASN:ND2	1:B:489:LYS:H	2.11	0.48
1:B:357:PHE:CD1	5:B:1002[B]:417:H222	2.49	0.48
1:A:512:LYS:HE3	1:A:527:GLN:OE1	2.13	0.48
1:B:334:SER:O	1:B:336:ARG:HG2	2.14	0.48
1:B:614:SER:HB3	1:B:621[A]:ASN:ND2	2.29	0.48
5:B:1002[B]:417:H221	6:B:2812:HOH:O	2.13	0.48
1:B:658:ARG:HD3	1:B:660:GLU:HB2	1.95	0.47

Continued on next page...

Continued from previous page...

Atom-1	Atom-2	Distance(Å)	Clash(Å)
1:A:153:GLN:HE22	1:A:170:ASN:HD21	1.60	0.47
1:B:658:ARG:HG2	1:B:661:TYR:CD2	2.50	0.47
1:A:109:PRO:HD2	1:A:161:GLY:O	2.14	0.47
1:B:159:PRO:HD3	1:B:216:TRP:CB	2.44	0.47
1:B:111:GLY:O	1:B:137:LEU:HD12	2.15	0.47
1:A:139:LYS:HZ3	1:A:139:LYS:HB3	1.78	0.47
1:A:319:ILE:HG12	6:A:9191:HOH:O	2.14	0.47
2:A:1150:NAG:O3	2:A:1151:NAG:N2	2.48	0.47
1:A:159:PRO:HD3	1:A:216:TRP:CB	2.44	0.47
1:B:510:PRO:HD3	1:B:569:SER:HB2	1.96	0.46
2:B:2219:NAG:H82	6:B:2777:HOH:O	2.15	0.46
1:A:224:ALA:HB1	1:A:268:PHE:CZ	2.50	0.46
1:B:597:ARG:HG2	6:B:2751:HOH:O	2.16	0.46
1:B:139:LYS:O	1:B:141:GLN:HG3	2.15	0.46
1:B:614:SER:HB3	1:B:621[A]:ASN:HD21	1.81	0.46
1:A:626:ILE:HG23	1:A:636:THR:HG23	1.98	0.46
1:A:310:ARG:HA	1:A:328:CYS:O	2.15	0.46
1:B:254:VAL:HA	1:B:255:PRO:HD3	1.88	0.45
1:B:147:ARG:HE	3:B:2150:NAG:C8	2.06	0.45
1:B:129:THR:CB	6:B:2795:HOH:O	2.63	0.45
1:B:272:ASN:ND2	1:B:274:ASP:N	2.64	0.45
1:A:137:LEU:O	1:A:140:ARG:HD2	2.16	0.45
1:B:448:GLU:HG3	6:B:2741:HOH:O	2.16	0.45
1:B:402:TRP:CD2	1:B:421:GLU:HB2	2.53	0.44
1:A:459:VAL:HG22	1:A:460:SER:N	2.32	0.44
1:A:143:ILE:CD1	1:A:178:PRO:HB2	2.47	0.44
1:B:459:VAL:HG22	1:B:460:SER:N	2.33	0.44
1:A:258:LYS:HZ1	1:A:712:HIS:HD2	1.62	0.44
1:A:626:ILE:O	1:A:650:GLY:HA2	2.18	0.43
2:A:1229:NAG:H62	2:A:1230:NAG:C1	2.48	0.43
1:B:167:VAL:HG21	1:B:198:ILE:HG23	1.98	0.43
1:A:196:ASN:OD1	1:A:227:GLN:HG3	2.18	0.43
2:A:1150:NAG:H4	2:A:1151:NAG:H2	1.78	0.43
1:B:60:LEU:HD12	1:B:60:LEU:O	2.17	0.43
1:A:136:ASP:CB	1:A:139:LYS:HG2	2.47	0.43
2:A:1322:NAG:O7	2:A:1322:NAG:C1	2.65	0.43
1:A:756:SER:O	1:A:760:LYS:HG3	2.18	0.43
2:A:1229:NAG:C6	2:A:1230:NAG:C1	2.97	0.43
1:B:765:LEU:HA	1:B:766:PRO:HD3	1.93	0.43
1:B:450:ASN:C	1:B:450:ASN:HD22	2.21	0.43
1:A:291:ALA:O	1:A:295:ILE:HG23	2.19	0.43
1:B:156:THR:HG21	1:B:214:LEU:HD11	2.01	0.43

Continued on next page...

Continued from previous page...

Atom-1	Atom-2	Distance(Å)	Clash(Å)
1:A:415:LEU:HD23	1:A:415:LEU:C	2.39	0.43
1:B:741:GLY:O	1:B:742:ILE:C	2.57	0.43
1:A:765:LEU:HA	1:A:766:PRO:HD3	1.94	0.43
1:B:751:ILE:O	1:B:755:MET:HG3	2.19	0.43
1:A:299:TYR:CE1	1:A:665:VAL:HG22	2.54	0.43
1:A:105:TYR:HB2	1:A:114:ILE:HD11	2.02	0.42
1:B:422:TYR:CE2	1:B:423:LYS:HE2	2.54	0.42
1:A:139:LYS:HG3	1:A:141:GLN:HB2	2.00	0.42
1:A:184:ARG:HD2	1:A:187:TRP:CD2	2.55	0.42
1:B:206:GLU:OE2	1:B:663:ASP:OD2	2.37	0.42
1:A:403:GLU:OE1	1:A:585:TYR:HA	2.20	0.42
1:B:491:LEU:O	1:B:492:ARG:HB3	2.20	0.42
1:A:41:LYS:HE2	1:A:53:TYR:OH	2.20	0.42
1:A:461:PHE:CD2	1:A:468:TYR:HB3	2.55	0.42
1:A:378:GLU:HG2	6:A:9386:HOH:O	2.19	0.41
1:B:626:ILE:O	1:B:650:GLY:HA2	2.20	0.41
1:B:627:TRP:HB2	1:B:651:ILE:HB	2.02	0.41
1:A:69:LEU:CD1	1:A:107:ILE:HD12	2.50	0.41
1:A:60:LEU:HD12	1:A:60:LEU:C	2.41	0.41
1:B:73:GLU:O	1:B:74:ASN:HB2	2.20	0.41
1:B:127:SER:HB3	1:B:211:TYR:CD1	2.56	0.41
1:A:534:PHE:HZ	1:A:618:PHE:CG	2.38	0.41
1:B:54:ARG:HB2	1:B:54:ARG:HE	1.76	0.41
1:B:520:ASN:O	1:B:521:GLU:CB	2.69	0.41
1:B:546[A]:VAL:HG22	1:B:547:TYR:N	2.36	0.41
1:A:693:GLU:HB2	6:A:9265:HOH:O	2.21	0.41
1:B:105:TYR:HB2	1:B:114:ILE:HD11	2.03	0.41
1:A:677:GLU:CD	1:A:677:GLU:H	2.24	0.41
1:B:684:ARG:HA	1:B:684:ARG:HD3	1.97	0.41
1:A:669:ARG:HD2	1:A:670:TYR:CZ	2.56	0.41
1:B:112:GLN:HG2	1:B:138:ASN:HD21	1.86	0.41
1:B:513:LYS:O	1:B:527:GLN:HA	2.22	0.40
1:B:98:PHE:CD2	1:B:100:HIS:HB2	2.56	0.40
1:B:314:GLN:HG2	1:B:325:MET:HB2	2.04	0.40
1:B:649:CYS:HB3	1:B:699:GLU:HB2	2.04	0.40
1:B:158:SER:HB3	1:B:163:LYS:HB2	2.02	0.40
1:B:414:TYR:CD2	1:B:433:LYS:HE2	2.57	0.40
1:B:75:ASN:ND2	3:B:2092:NAG:C1	2.83	0.40

There are no symmetry-related clashes.

5.3 Torsion angles

5.3.1 Protein backbone ⓘ

In the following table, the Percentiles column shows the percent Ramachandran outliers of the chain as a percentile score with respect to all X-ray entries followed by that with respect to entries of similar resolution. The Analysed column shows the number of residues for which the backbone conformation was analysed, and the total number of residues.

Mol	Chain	Analysed	Favoured	Allowed	Outliers	Percentiles	
1	A	731/728 (100%)	709 (97%)	22 (3%)	0	100	100
1	B	730/728 (100%)	699 (96%)	30 (4%)	1 (0%)	59	66
All	All	1461/1456 (100%)	1408 (96%)	52 (4%)	1 (0%)	59	66

All (1) Ramachandran outliers are listed below:

Mol	Chain	Res	Type
1	B	320	GLN

5.3.2 Protein sidechains ⓘ

In the following table, the Percentiles column shows the percent sidechain outliers of the chain as a percentile score with respect to all X-ray entries followed by that with respect to entries of similar resolution. The Analysed column shows the number of residues for which the sidechain conformation was analysed, and the total number of residues.

Mol	Chain	Analysed	Rotameric	Outliers	Percentiles	
1	A	658/653 (101%)	640 (97%)	18 (3%)	57	68
1	B	657/653 (101%)	641 (98%)	16 (2%)	61	73
All	All	1315/1306 (101%)	1281 (97%)	34 (3%)	60	70

All (34) residues with a non-rotameric sidechain are listed below:

Mol	Chain	Res	Type
1	A	39	THR
1	A	54	ARG
1	A	139	LYS
1	A	147	ARG
1	A	170	ASN
1	A	179	ASN
1	A	184	ARG
1	A	230	ASP

Continued on next page...

Continued from previous page...

Mol	Chain	Res	Type
1	A	326	ASP
1	A	344	GLN
1	A	379	GLU
1	A	385	CYS
1	A	388	GLN
1	A	448	GLU
1	A	472	CYS
1	A	520	ASN
1	A	566	TYR
1	A	597	ARG
1	B	57	LEU
1	B	66	HIS
1	B	129	THR
1	B	156	THR
1	B	254	VAL
1	B	272	ASN
1	B	385	CYS
1	B	388	GLN
1	B	448	GLU
1	B	450	ASN
1	B	472	CYS
1	B	487	ASN
1	B	566	TYR
1	B	621[A]	ASN
1	B	621[B]	ASN
1	B	658	ARG

Some sidechains can be flipped to improve hydrogen bonding and reduce clashes. All (23) such sidechains are listed below:

Mol	Chain	Res	Type
1	A	75	ASN
1	A	123	GLN
1	A	169	ASN
1	A	170	ASN
1	A	179	ASN
1	A	435	GLN
1	A	505	GLN
1	A	572	ASN
1	A	712	HIS
1	B	74	ASN
1	B	75	ASN
1	B	138	ASN

Continued on next page...

Continued from previous page...

Mol	Chain	Res	Type
1	B	141	GLN
1	B	169	ASN
1	B	272	ASN
1	B	345	HIS
1	B	450	ASN
1	B	487	ASN
1	B	533	HIS
1	B	572	ASN
1	B	685	ASN
1	B	712	HIS
1	B	731	GLN

5.3.3 RNA ⓘ

There are no RNA chains in this entry.

5.4 Non-standard residues in protein, DNA, RNA chains ⓘ

There are no non-standard protein/DNA/RNA residues in this entry.

5.5 Carbohydrates ⓘ

18 carbohydrates are modelled in this entry.

In the following table, the Counts columns list the number of bonds (or angles) for which Mogul statistics could be retrieved, the number of bonds (or angles) that are observed in the model and the number of bonds (or angles) that are defined in the chemical component dictionary. The Link column lists molecule types, if any, to which the group is linked. The Z score for a bond length (or angle) is the number of standard deviations the observed value is removed from the expected value. A bond length (or angle) with $|Z| > 2$ is considered an outlier worth inspection. RMSZ is the root-mean-square of all Z scores of the bond lengths (or angles).

Mol	Type	Chain	Res	Link	Bond lengths			Bond angles		
					Counts	RMSZ	$\# Z > 2$	Counts	RMSZ	$\# Z > 2$
2	NAG	A	1085	1,2	12,14,15	0.60	0	15,19,21	1.40	4 (26%)
2	NAG	A	1086	2	12,14,15	0.68	0	15,19,21	0.74	0
2	NAG	A	1150	1,2	12,14,15	0.42	0	15,19,21	0.98	1 (6%)
2	NAG	A	1151	2	12,14,15	0.70	0	15,19,21	0.95	0
2	NAG	A	1219	1,2	12,14,15	0.61	0	15,19,21	0.83	0
2	NAG	A	1220	2	12,14,15	0.50	0	15,19,21	0.82	0
2	NAG	A	1229	1,2	12,14,15	0.60	0	15,19,21	0.78	0

Mol	Type	Chain	Res	Link	Bond lengths			Bond angles		
					Counts	RMSZ	# Z > 2	Counts	RMSZ	# Z > 2
2	NAG	A	1230	2	12,14,15	0.60	0	15,19,21	0.87	1 (6%)
2	NAG	A	1321	1,2	12,14,15	0.70	0	15,19,21	0.93	1 (6%)
2	NAG	A	1322	2	12,14,15	0.61	0	15,19,21	0.59	0
2	NAG	B	2085	1,2	12,14,15	0.62	0	15,19,21	0.74	0
2	NAG	B	2086	2	12,14,15	0.57	0	15,19,21	0.65	0
2	NAG	B	2219	1,2	12,14,15	0.48	0	15,19,21	0.64	0
2	NAG	B	2220	2	12,14,15	0.54	0	15,19,21	0.69	0
2	NAG	B	2229	1,2	12,14,15	0.53	0	15,19,21	0.92	1 (6%)
2	NAG	B	2230	2	12,14,15	0.51	0	15,19,21	0.72	0
2	NAG	B	2281	1,2	12,14,15	0.56	0	15,19,21	0.86	1 (6%)
2	NAG	B	2282	2	12,14,15	0.59	0	15,19,21	0.70	0

In the following table, the Chirals column lists the number of chiral outliers, the number of chiral centers analysed, the number of these observed in the model and the number defined in the chemical component dictionary. Similar counts are reported in the Torsion and Rings columns. '-' means no outliers of that kind were identified.

Mol	Type	Chain	Res	Link	Chirals	Torsions	Rings
2	NAG	A	1085	1,2	-	0/6/23/26	0/1/1/1
2	NAG	A	1086	2	1/1/5/7	0/6/23/26	0/1/1/1
2	NAG	A	1150	1,2	1/1/5/7	0/6/23/26	0/1/1/1
2	NAG	A	1151	2	-	0/6/23/26	0/1/1/1
2	NAG	A	1219	1,2	-	0/6/23/26	0/1/1/1
2	NAG	A	1220	2	-	0/6/23/26	0/1/1/1
2	NAG	A	1229	1,2	-	0/6/23/26	0/1/1/1
2	NAG	A	1230	2	1/1/5/7	0/6/23/26	0/1/1/1
2	NAG	A	1321	1,2	-	0/6/23/26	0/1/1/1
2	NAG	A	1322	2	-	0/6/23/26	0/1/1/1
2	NAG	B	2085	1,2	-	0/6/23/26	0/1/1/1
2	NAG	B	2086	2	-	0/6/23/26	0/1/1/1
2	NAG	B	2219	1,2	-	0/6/23/26	0/1/1/1
2	NAG	B	2220	2	-	0/6/23/26	0/1/1/1
2	NAG	B	2229	1,2	-	0/6/23/26	0/1/1/1
2	NAG	B	2230	2	-	0/6/23/26	0/1/1/1
2	NAG	B	2281	1,2	-	0/6/23/26	0/1/1/1
2	NAG	B	2282	2	-	0/6/23/26	0/1/1/1

There are no bond length outliers.

All (9) bond angle outliers are listed below:

Mol	Chain	Res	Type	Atoms	Z	Observed(°)	Ideal(°)
2	A	1150	NAG	C3-C2-N2	-2.78	107.52	111.76
2	B	2229	NAG	C3-C2-N2	-2.69	107.67	111.76
2	B	2281	NAG	C2-N2-C7	-2.46	118.95	123.09
2	A	1085	NAG	C4-C3-C2	-2.43	105.36	111.32
2	A	1085	NAG	O4-C4-C3	2.21	115.31	110.35
2	A	1230	NAG	C3-C2-N2	-2.15	108.49	111.76
2	A	1321	NAG	C2-N2-C7	-2.13	119.52	123.09
2	A	1085	NAG	C3-C4-C5	-2.01	106.61	110.20
2	A	1085	NAG	O5-C5-C4	-2.01	108.10	110.65

All (3) chirality outliers are listed below:

Mol	Chain	Res	Type	Atom
2	A	1230	NAG	C1
2	A	1150	NAG	C1
2	A	1086	NAG	C1

There are no torsion outliers.

There are no ring outliers.

5.6 Ligand geometry ⓘ

Of 11 ligands modelled in this entry, 1 is monoatomic - leaving 10 for Mogul analysis.

In the following table, the Counts columns list the number of bonds (or angles) for which Mogul statistics could be retrieved, the number of bonds (or angles) that are observed in the model and the number of bonds (or angles) that are defined in the chemical component dictionary. The Link column lists molecule types, if any, to which the group is linked. The Z score for a bond length (or angle) is the number of standard deviations the observed value is removed from the expected value. A bond length (or angle) with $|Z| > 2$ is considered an outlier worth inspection. RMSZ is the root-mean-square of all Z scores of the bond lengths (or angles).

Mol	Type	Chain	Res	Link	Bond lengths			Bond angles		
					Counts	RMSZ	# Z > 2	Counts	RMSZ	# Z > 2
5	417	A	1001[A]	-	32,32,32	2.02	8 (25%)	48,49,49	1.82	9 (18%)
5	417	A	1001[B]	-	32,32,32	2.09	10 (31%)	48,49,49	1.86	8 (16%)
3	NAG	A	1092	1	12,14,15	0.59	0	15,19,21	0.73	0
3	NAG	A	1281	1	12,14,15	0.53	0	15,19,21	0.79	1 (6%)
3	NAG	A	1520	1	12,14,15	0.61	0	15,19,21	0.67	0
5	417	B	1002[A]	-	32,32,32	2.15	11 (34%)	48,49,49	1.83	8 (16%)
5	417	B	1002[B]	-	32,32,32	2.22	14 (43%)	48,49,49	1.77	8 (16%)
3	NAG	B	2092	1	12,14,15	0.57	0	15,19,21	0.61	0

Mol	Type	Chain	Res	Link	Bond lengths			Bond angles		
					Counts	RMSZ	# Z > 2	Counts	RMSZ	# Z > 2
3	NAG	B	2150	1	12,14,15	0.69	0	15,19,21	0.76	0
3	NAG	B	2321	1	12,14,15	0.56	0	15,19,21	0.79	0

In the following table, the Chirals column lists the number of chiral outliers, the number of chiral centers analysed, the number of these observed in the model and the number defined in the chemical component dictionary. Similar counts are reported in the Torsion and Rings columns. '-' means no outliers of that kind were identified.

Mol	Type	Chain	Res	Link	Chirals	Torsions	Rings
5	417	A	1001[A]	-	-	0/14/36/36	0/2/4/4
5	417	A	1001[B]	-	-	0/14/36/36	0/2/4/4
3	NAG	A	1092	1	-	0/6/23/26	0/1/1/1
3	NAG	A	1281	1	-	0/6/23/26	0/1/1/1
3	NAG	A	1520	1	-	0/6/23/26	0/1/1/1
5	417	B	1002[A]	-	-	0/14/36/36	0/2/4/4
5	417	B	1002[B]	-	-	0/14/36/36	0/2/4/4
3	NAG	B	2092	1	-	0/6/23/26	0/1/1/1
3	NAG	B	2150	1	-	0/6/23/26	0/1/1/1
3	NAG	B	2321	1	-	0/6/23/26	0/1/1/1

All (43) bond length outliers are listed below:

Mol	Chain	Res	Type	Atoms	Z	Observed(Å)	Ideal(Å)
5	B	1002[A]	417	N35-N34	-5.99	1.25	1.37
5	A	1001[B]	417	N35-N34	-5.90	1.25	1.37
5	A	1001[A]	417	N35-N34	-5.81	1.25	1.37
5	B	1002[B]	417	N35-N34	-5.46	1.26	1.37
5	B	1002[B]	417	C13-C14	4.86	1.56	1.52
5	B	1002[A]	417	C13-C14	4.65	1.55	1.52
5	A	1001[A]	417	C9-C14	4.19	1.57	1.53
5	B	1002[B]	417	C3-C2	3.90	1.43	1.38
5	A	1001[A]	417	C13-C14	3.76	1.55	1.52
5	B	1002[A]	417	C3-C2	3.73	1.43	1.38
5	A	1001[B]	417	C3-C2	3.63	1.43	1.38
5	B	1002[B]	417	C33-N34	3.61	1.37	1.31
5	A	1001[B]	417	C13-C14	3.52	1.54	1.52
5	A	1001[B]	417	C9-C14	3.45	1.56	1.53
5	A	1001[A]	417	C3-C2	3.43	1.42	1.38
5	A	1001[B]	417	C33-N34	3.36	1.36	1.31
5	B	1002[A]	417	C33-N34	3.07	1.36	1.31
5	B	1002[A]	417	C9-C14	3.07	1.56	1.53
5	B	1002[B]	417	C39-C33	2.81	1.54	1.51

Continued on next page...

Continued from previous page...

Mol	Chain	Res	Type	Atoms	Z	Observed(Å)	Ideal(Å)
5	B	1002[B]	417	C1-C2	2.70	1.42	1.37
5	A	1001[A]	417	C33-N34	2.69	1.35	1.31
5	B	1002[B]	417	C13-C12	2.69	1.57	1.53
5	A	1001[B]	417	C25-N35	2.65	1.35	1.32
5	B	1002[A]	417	C10-C9	2.65	1.57	1.53
5	B	1002[B]	417	C4-C3	2.59	1.44	1.39
5	B	1002[B]	417	C25-N35	2.54	1.35	1.32
5	B	1002[A]	417	C39-C33	2.52	1.53	1.51
5	A	1001[A]	417	C4-C5	2.51	1.42	1.37
5	B	1002[A]	417	C4-C5	2.47	1.42	1.37
5	A	1001[B]	417	C25-N24	-2.40	1.33	1.36
5	A	1001[B]	417	C4-C5	2.38	1.41	1.37
5	B	1002[A]	417	C1-C2	2.37	1.41	1.37
5	B	1002[A]	417	C4-C3	2.34	1.44	1.39
5	A	1001[B]	417	C4-C3	2.31	1.44	1.39
5	B	1002[B]	417	C26-C25	2.30	1.55	1.51
5	B	1002[B]	417	C1-C6	2.28	1.41	1.37
5	A	1001[A]	417	C39-C33	2.25	1.53	1.51
5	A	1001[B]	417	C13-C12	2.24	1.56	1.53
5	A	1001[A]	417	C4-C3	2.14	1.43	1.39
5	B	1002[A]	417	C26-N21	2.11	1.52	1.47
5	B	1002[B]	417	C4-C5	2.10	1.41	1.37
5	B	1002[B]	417	C9-C14	2.09	1.55	1.53
5	B	1002[B]	417	C26-N21	2.06	1.52	1.47

All (34) bond angle outliers are listed below:

Mol	Chain	Res	Type	Atoms	Z	Observed(°)	Ideal(°)
5	A	1001[B]	417	C33-N24-C25	-6.28	103.42	107.00
5	B	1002[A]	417	C33-N24-C25	-6.07	103.54	107.00
5	A	1001[A]	417	C33-N24-C25	-6.02	103.56	107.00
5	A	1001[B]	417	F42-C39-C33	-4.91	105.97	111.29
5	B	1002[B]	417	C33-N24-C25	-4.90	104.20	107.00
5	B	1002[B]	417	N34-C33-N24	-4.37	108.05	111.11
5	A	1001[A]	417	N34-C33-N24	-4.30	108.10	111.11
5	B	1002[B]	417	C26-C25-N35	4.24	129.40	122.22
5	B	1002[B]	417	C39-C33-N34	4.19	126.49	122.41
5	B	1002[A]	417	N34-C33-N24	-4.14	108.21	111.11
5	A	1001[B]	417	C23-N24-C33	4.08	131.70	125.87
5	A	1001[A]	417	C23-N24-C33	4.08	131.70	125.87
5	B	1002[A]	417	C23-N24-C33	4.04	131.64	125.87
5	A	1001[B]	417	N34-C33-N24	-3.91	108.37	111.11

Continued on next page...

Continued from previous page...

Mol	Chain	Res	Type	Atoms	Z	Observed(°)	Ideal(°)
5	A	1001[B]	417	C26-C25-N35	3.90	128.81	122.22
5	B	1002[A]	417	C26-C25-N35	3.87	128.76	122.22
5	B	1002[A]	417	F42-C39-C33	-3.76	107.21	111.29
5	B	1002[B]	417	C23-N24-C33	3.73	131.20	125.87
5	A	1001[A]	417	C26-C25-N35	3.64	128.38	122.22
5	A	1001[A]	417	F42-C39-C33	-3.55	107.44	111.29
5	B	1002[A]	417	F41-C39-C33	-3.52	107.47	111.29
5	B	1002[A]	417	C39-C33-N34	3.52	125.84	122.41
5	B	1002[B]	417	F41-C39-C33	-3.44	107.56	111.29
5	A	1001[B]	417	C39-C33-N34	3.36	125.68	122.41
5	B	1002[B]	417	F42-C39-C33	-3.27	107.75	111.29
5	A	1001[A]	417	F41-C39-C33	-3.26	107.76	111.29
5	A	1001[A]	417	C39-C33-N34	2.79	125.13	122.41
5	A	1001[A]	417	C33-N34-N35	2.60	109.95	106.06
5	B	1002[A]	417	C33-N34-N35	2.46	109.74	106.06
5	A	1001[A]	417	C39-C33-N24	2.43	126.77	123.56
5	A	1001[B]	417	F41-C39-C33	-2.35	108.75	111.29
5	B	1002[B]	417	C33-N34-N35	2.30	109.49	106.06
5	A	1001[B]	417	C33-N34-N35	2.12	109.22	106.06
3	A	1281	NAG	C2-N2-C7	-2.08	119.60	123.09

There are no chirality outliers.

There are no torsion outliers.

There are no ring outliers.

5.7 Other polymers ⓘ

There are no such residues in this entry.

5.8 Polymer linkage issues

There are no chain breaks in this entry.

6 Fit of model and data ⓘ

6.1 Protein, DNA and RNA chains ⓘ

In the following table, the column labelled ‘#RSRZ > 2’ contains the number (and percentage) of RSRZ outliers, followed by percent RSRZ outliers for the chain as percentile scores relative to all X-ray entries and entries of similar resolution. The OWAB column contains the minimum, median, 95th percentile and maximum values of the occupancy-weighted average B-factor per residue. The column labelled ‘Q < 0.9’ lists the number of (and percentage) of residues with an average occupancy less than 0.9.

Mol	Chain	Analysed	<RSRZ>	#RSRZ>2	OWAB(Å ²)	Q<0.9
1	A	728/728 (100%)	-0.30	11 (1%) 70 71	15, 25, 46, 60	0
1	B	728/728 (100%)	-0.27	16 (2%) 59 59	16, 26, 45, 59	0
All	All	1456/1456 (100%)	-0.29	27 (1%) 64 64	15, 26, 46, 60	0

All (27) RSRZ outliers are listed below:

Mol	Chain	Res	Type	RSRZ
1	A	39	THR	7.0
1	B	766	PRO	4.8
1	B	98	PHE	4.3
1	A	766	PRO	4.2
1	B	96	ASP	3.8
1	A	97	GLU	3.7
1	B	39	THR	3.7
1	A	73	GLU	3.5
1	A	74	ASN	3.4
1	B	100	HIS	2.9
1	B	73	GLU	2.9
1	B	138	ASN	2.8
1	B	97	GLU	2.6
1	B	91	GLU	2.6
1	A	99	GLY	2.6
1	A	279	VAL	2.6
1	B	765	LEU	2.6
1	A	138	ASN	2.5
1	B	74	ASN	2.5
1	B	95	PHE	2.4
1	B	92	ASN	2.4
1	B	88	VAL	2.3
1	B	621[A]	ASN	2.3
1	A	40	ARG	2.2

Continued on next page...

Continued from previous page...

Mol	Chain	Res	Type	RSRZ
1	A	92	ASN	2.1
1	B	505	GLN	2.1
1	A	98	PHE	2.0

6.2 Non-standard residues in protein, DNA, RNA chains ⓘ

There are no non-standard protein/DNA/RNA residues in this entry.

6.3 Carbohydrates ⓘ

In the following table, the Atoms column lists the number of modelled atoms in the group and the number defined in the chemical component dictionary. LLDF column lists the quality of electron density of the group with respect to its neighbouring residues in protein, DNA or RNA chains. The B-factors column lists the minimum, median, 95th percentile and maximum values of B factors of atoms in the group. The column labelled 'Q< 0.9' lists the number of atoms with occupancy less than 0.9.

Mol	Type	Chain	Res	Atoms	RSR	LLDF	B-factors(Å ²)	Q<0.9
2	NAG	A	1230	14/15	0.28	11.50	52,55,58,58	0
2	NAG	A	1321	14/15	0.26	9.88	43,48,49,53	0
2	NAG	A	1322	14/15	0.36	9.33	54,56,59,59	0
2	NAG	A	1150	14/15	0.33	6.54	52,55,56,58	0
2	NAG	B	2282	14/15	0.19	5.16	46,48,50,50	0
2	NAG	A	1085	14/15	0.16	3.43	43,46,53,54	0
2	NAG	A	1219	14/15	0.15	3.19	40,44,47,47	0
2	NAG	A	1220	14/15	0.22	2.26	50,52,54,56	0
2	NAG	B	2281	14/15	0.10	1.40	31,33,40,42	0
2	NAG	B	2220	14/15	0.16	1.34	44,46,49,49	0
2	NAG	B	2219	14/15	0.10	1.31	33,39,43,43	0
2	NAG	A	1229	14/15	0.12	0.72	34,37,43,47	0
2	NAG	B	2085	14/15	0.16	0.51	46,51,55,56	0
2	NAG	B	2230	14/15	0.23	0.29	43,45,49,49	0
2	NAG	B	2229	14/15	0.09	-0.51	29,31,37,40	0
2	NAG	A	1151	14/15	0.41	-	56,60,62,63	0
2	NAG	B	2086	14/15	0.38	-	59,61,63,63	0
2	NAG	A	1086	14/15	0.28	-	57,59,60,60	0

6.4 Ligands ⓘ

In the following table, the Atoms column lists the number of modelled atoms in the group and the number defined in the chemical component dictionary. LLDF column lists the quality of electron density of the group with respect to its neighbouring residues in protein, DNA or RNA chains. The B-factors column lists the minimum, median, 95th percentile and maximum values of B factors of atoms in the group. The column labelled 'Q< 0.9' lists the number of atoms with occupancy less than 0.9.

Mol	Type	Chain	Res	Atoms	RSR	LLDF	B-factors(Å ²)	Q<0.9
3	NAG	B	2150	14/15	0.53	8.92	58,60,64,64	0
3	NAG	A	1520	14/15	0.41	8.31	56,58,61,62	0
5	417	A	1001[A]	29/29	0.24	4.50	16,20,30,31	29
5	417	A	1001[B]	29/29	0.24	4.37	21,23,33,35	29
5	417	B	1002[B]	29/29	0.24	4.04	23,25,30,31	29
3	NAG	B	2321	14/15	0.25	3.92	43,46,48,49	0
5	417	B	1002[A]	29/29	0.24	3.69	18,23,32,33	29
3	NAG	A	1092	14/15	0.43	1.68	62,64,65,66	0
3	NAG	B	2092	14/15	0.36	0.92	58,59,61,62	0
3	NAG	A	1281	14/15	0.18	0.25	44,45,47,47	0
4	NA	A	9001	1/1	0.07	-2.70	31,31,31,31	0

6.5 Other polymers ⓘ

There are no such residues in this entry.