



Full wwPDB X-ray Structure Validation Report ⓘ

Apr 4, 2014 – 11:42 AM EDT

PDB ID : 4P8S
Title : Crystal structure of Nogo-receptor-2
Authors : Semavina, M.; Saha, N.; Kolev, M.V.; Giger, R.J.; Himanen, J.P.; Nikolov, D.B.
Deposited on : 2014-04-01
Resolution : 1.80 Å(reported)

This is a full wwPDB validation report for a publicly released PDB entry.
We welcome your comments at validation@mail.wwpdb.org
A user guide is available at <http://wwpdb.org/ValidationPDFNotes.html>

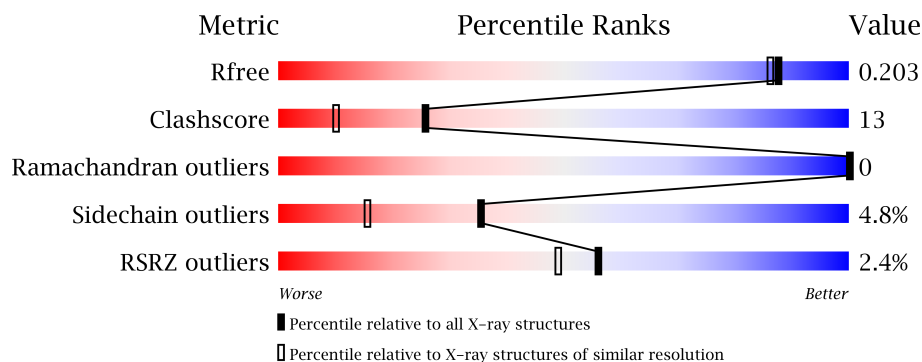
The following versions of software and data (see [references](#)) were used in the production of this report:

MolProbity : 4.02b-467
Mogul : **FAILED**
Xtriage (Phenix) : dev-1439
EDS : stable22978
Percentile statistics : 21963
Refmac : 5.8.0049
CCP4 : 6.3.0 (Settle)
Ideal geometry (proteins) : Engh & Huber (2001)
Ideal geometry (DNA, RNA) : Parkinson et. al. (1996)
Validation Pipeline (wwPDB-VP) : stable22978

1 Overall quality at a glance


The reported resolution of this entry is 1.80 Å.

Percentile scores (ranging between 0-100) for global validation metrics of the entry are shown in the following graphic. The table shows the number of entries on which the scores are based.



Metric	Whole archive (#Entries)	Similar resolution (#Entries, resolution range(Å))
R_{free}	66092	3513 (1.80-1.80)
Clashscore	79885	4461 (1.80-1.80)
Ramachandran outliers	78287	4404 (1.80-1.80)
Sidechain outliers	78261	4403 (1.80-1.80)
RSRZ outliers	66119	3515 (1.80-1.80)

The table below summarises the geometric issues observed across the polymeric chains and their fit to the electron density. The red, orange, yellow and green segments on the lower bar indicate the fraction of residues that contain outliers for ≥ 3 , 2, 1 and 0 types of geometric quality criteria. The upper red bar (where present) indicates the fraction of residues that have poor fit to the electron density.

Mol	Chain	Length	Quality of chain
1	A	282	

The following table lists non-polymeric compounds that are outliers for geometric or electron-density-fit criteria:

Mol	Type	Chain	Res	Geometry	Electron density
3	NDG	A	405	-	X

2 Entry composition i

There are 4 unique types of molecules in this entry. The entry contains 2684 atoms, of which 0 are hydrogen and 0 are deuterium.

In the tables below, the ZeroOcc column contains the number of atoms modelled with zero occupancy, the AltConf column contains the number of residues with at least one atom in alternate conformation and the Trace column contains the number of residues modelled with at most 2 atoms.

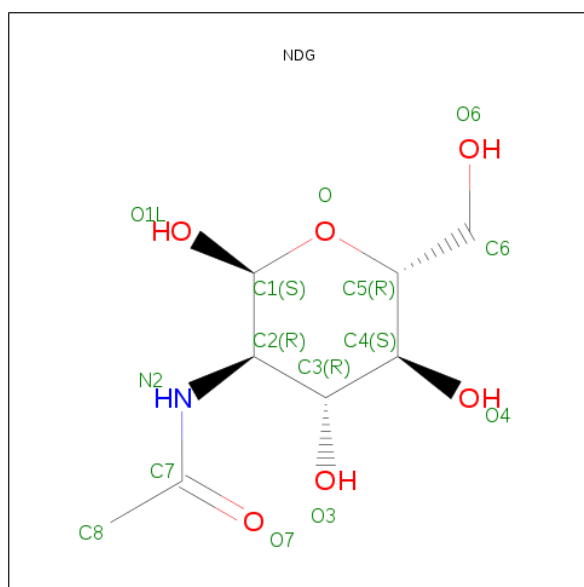
- Molecule 1 is a protein called Reticulon-4 receptor-like 2.

Mol	Chain	Residues	Atoms					ZeroOcc	AltConf	Trace
1	A	282	Total	C	N	O	S	0	0	0
			2249	1425	412	402	10			

- Molecule 2 is a polymer of unknown type called SUGAR (2-MER).

Mol	Chain	Residues	Atoms				ZeroOcc	AltConf
2	A	2	Total	C	N	O	0	0
			28	16	2	10		
2	A	2	Total	C	N	O	0	0
			28	16	2	10		

- Molecule 3 is SUGAR (2-(ACETYLAMINO)-2-DEOXY-A-D-GLUCOPYRANOSE) (three-letter code: NDG) (formula: C₈H₁₅NO₆).



Mol	Chain	Residues	Atoms				ZeroOcc	AltConf
3	A	1	Total	C	N	O	0	0
			14	8	1	5		

- Molecule 4 is water.

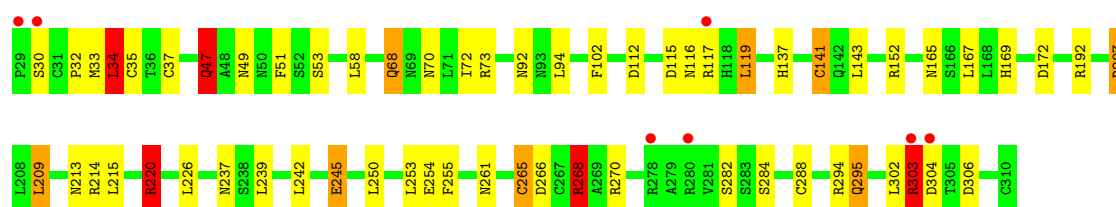
Mol	Chain	Residues	Atoms		ZeroOcc	AltConf
4	A	365	Total 365	O 365	0	0

3 Residue-property plots

These plots are drawn for all protein, RNA and DNA chains in the entry. The first graphic for a chain summarises the proportions of errors displayed in the second graphic. The second graphic shows the sequence view annotated by issues in geometry and electron density. Residues are color-coded according to the number of geometric quality criteria for which they contain at least one outlier: green = 0, yellow = 1, orange = 2 and red = 3 or more. A red dot above a residue indicates a poor fit to the electron density ($RSRZ > 2$). Stretches of 2 or more consecutive residues without any outlier are shown as a green connector. Residues present in the sample, but not in the model, are shown in grey.

- Molecule 1: Reticulon-4 receptor-like 2

Chain A: 



4 Data and refinement statistics

Property	Value	Source
Space group	P 21 21 21	Depositor
Cell constants a, b, c, α , β , γ	56.82Å 56.52Å 128.96Å 90.00° 90.00° 90.00°	Depositor
Resolution (Å)	25.00 – 1.80 25.30 – 1.80	Depositor EDS
% Data completeness (in resolution range)	97.3 (25.00-1.80) 98.5 (25.30-1.80)	Depositor EDS
R_{merge}	(Not available)	Depositor
R_{sym}	0.10	Depositor
$\langle I/\sigma(I) \rangle$ ¹	2.17 (at 1.80Å)	Xtriage
Refinement program	REFMAC 5.5.0109	Depositor
R, R_{free}	0.171 , 0.205 0.170 , 0.203	Depositor DCC
R_{free} test set	1959 reflections (5.33%)	DCC
Wilson B-factor (Å ²)	20.2	Xtriage
Anisotropy	0.015	Xtriage
Bulk solvent k_{sol} (e/Å ³), B_{sol} (Å ²)	0.39 , 34.4	EDS
Estimated twinning fraction	0.024 for k,h,-l	Xtriage
L-test for twinning	$\langle L \rangle = 0.48$, $\langle L^2 \rangle = 0.32$	Xtriage
Outliers	1 of 38720 reflections (0.003%)	Xtriage
F_o, F_c correlation	0.96	EDS
Total number of atoms	2684	wwPDB-VP
Average B, all atoms (Å ²)	24.0	wwPDB-VP

Xtriage's analysis on translational NCS is as follows: *The largest off-origin peak in the Patterson function is 6.32% of the height of the origin peak. No significant pseudotranslation is detected.*

¹Intensities estimated from amplitudes.

5 Model quality

5.1 Standard geometry

Bond lengths and bond angles in the following residue types are not validated in this section: NDG

The Z score for a bond length (or angle) is the number of standard deviations the observed value is removed from the expected value. A bond length (or angle) with $|Z| > 5$ is considered an outlier worth inspection. RMSZ is the root-mean-square of all Z scores of the bond lengths (or angles).

Mol	Chain	Bond lengths		Bond angles	
		RMSZ	$\# Z > 5$	RMSZ	$\# Z > 5$
1	A	1.42	13/2305 (0.6%)	1.21	18/3137 (0.6%)

Chiral center outliers are detected by calculating the chiral volume of a chiral center and verifying if the center is modelled as a planar moiety or with the opposite hand. A planarity outlier is detected by checking planarity of atoms in a peptide group, atoms in a mainchain group or atoms of a sidechain that are expected to be planar.

Mol	Chain	#Chirality outliers	#Planarity outliers
2	A	3	0

All (13) bond length outliers are listed below:

Mol	Chain	Res	Type	Atoms	Z	Observed(Å)	Ideal(Å)
1	A	47	GLN	CB-CG	13.46	1.89	1.52
1	A	245	GLU	CB-CG	6.84	1.65	1.52
1	A	35	CYS	CB-SG	6.66	1.93	1.82
1	A	265	CYS	CB-SG	6.37	1.93	1.82
1	A	53	SER	CB-OG	6.06	1.50	1.42
1	A	255	PHE	CD1-CE1	5.87	1.50	1.39
1	A	102	PHE	CE1-CZ	5.81	1.48	1.37
1	A	141	CYS	CB-SG	5.46	1.91	1.82
1	A	282	SER	CB-OG	-5.36	1.35	1.42
1	A	288	CYS	CB-SG	-5.33	1.73	1.81
1	A	220	ARG	CG-CD	5.25	1.65	1.51
1	A	284	SER	CB-OG	5.20	1.49	1.42
1	A	254	GLU	CG-CD	-5.09	1.44	1.51

All (18) bond angle outliers are listed below:

Mol	Chain	Res	Type	Atoms	Z	Observed(°)	Ideal(°)
1	A	73	ARG	NE-CZ-NH1	7.74	124.17	120.30
1	A	73	ARG	NE-CZ-NH2	-6.55	117.03	120.30
1	A	209	LEU	CB-CG-CD1	6.49	122.04	111.00
1	A	207	ARG	CG-CD-NE	-6.31	98.55	111.80
1	A	303	ARG	NE-CZ-NH1	6.24	123.42	120.30
1	A	172	ASP	CB-CG-OD1	5.97	123.67	118.30
1	A	253	LEU	CB-CG-CD2	-5.73	101.26	111.00
1	A	152	ARG	NE-CZ-NH1	5.72	123.16	120.30
1	A	192	ARG	NE-CZ-NH1	5.64	123.12	120.30
1	A	167	LEU	CB-CG-CD1	-5.64	101.41	111.00
1	A	250	LEU	CB-CG-CD2	-5.53	101.61	111.00
1	A	152	ARG	NE-CZ-NH2	-5.51	117.54	120.30
1	A	119	LEU	CB-CG-CD2	-5.42	101.79	111.00
1	A	242	LEU	CA-CB-CG	5.40	127.73	115.30
1	A	207	ARG	NE-CZ-NH1	-5.28	117.66	120.30
1	A	37	CYS	CA-CB-SG	-5.16	104.71	114.00
1	A	268	ARG	CG-CD-NE	5.12	122.55	111.80
1	A	34	LEU	CB-CG-CD1	5.08	119.64	111.00

All (3) chirality outliers are listed below:

Mol	Chain	Res	Type	Atom
2	A	401	NDG	C1
2	A	403	NDG	C1
2	A	404	NDG	C1

There are no planarity outliers.

5.2 Close contacts ⓘ

In the following table, the Non-H and H(model) columns list the number of non-hydrogen atoms and hydrogen atoms in the chain respectively. The H(added) column lists the number of hydrogens added by MolProbity. The Clashes column lists the number of clashes within the asymmetric unit, and the number in parentheses is this value normalized per 1000 atoms of the molecule in the chain. The Symm-Clashes column gives symmetry related clashes, in the same way as for the Clashes column.

Mol	Chain	Non-H	H(model)	H(added)	Clashes	Symm-Clashes
1	A	2249	0	2222	59	0
2	A	56	0	50	2	0
3	A	14	0	13	1	0
4	A	365	0	0	14	4
All	All	2684	0	2285	62	4

Clashscore is defined as the number of clashes calculated for the entry per 1000 atoms (including hydrogens) of the entry. The overall clashscore for this entry is 13.

All (62) close contacts within the same asymmetric unit are listed below.

Atom-1	Atom-2	Distance(Å)	Clash(Å)
1:A:47:GLN:CB	1:A:47:GLN:CG	1.88	1.49
1:A:169:HIS:HB3	4:A:569:HOH:O	1.27	1.31
1:A:117:ARG:HG3	4:A:732:HOH:O	1.52	1.08
1:A:117:ARG:CG	4:A:732:HOH:O	2.06	1.00
1:A:268:ARG:HG3	1:A:268:ARG:HH11	1.35	0.92
1:A:303:ARG:HH11	1:A:303:ARG:HG2	1.34	0.90
1:A:47:GLN:H	1:A:47:GLN:CG	1.87	0.87
1:A:68:GLN:H	1:A:68:GLN:HE21	1.17	0.87
1:A:220:ARG:CD	1:A:220:ARG:H	1.95	0.78
1:A:70:ASN:HB2	1:A:92:ASN:HD21	1.49	0.77
1:A:72:ILE:H	1:A:92:ASN:HD22	1.33	0.75
1:A:239:LEU:H	1:A:261:ASN:HD22	1.37	0.73
1:A:237:ASN:HB2	1:A:261:ASN:HD21	1.55	0.72
1:A:215:LEU:H	1:A:237:ASN:HD22	1.39	0.71
1:A:47:GLN:H	1:A:47:GLN:HG3	1.56	0.69
1:A:47:GLN:CG	1:A:47:GLN:N	2.56	0.68
1:A:213:ASN:HB2	1:A:237:ASN:HD21	1.59	0.66
1:A:266:ASP:OD2	1:A:268:ARG:NH1	2.29	0.66
1:A:137:HIS:HD2	4:A:838:HOH:O	1.78	0.65
1:A:266:ASP:OD1	1:A:268:ARG:NH1	2.30	0.65
1:A:141:CYS:H	1:A:165:ASN:HD21	1.45	0.64
1:A:115:ASP:HB2	4:A:755:HOH:O	1.97	0.64
1:A:303:ARG:HH11	1:A:303:ARG:CG	2.08	0.64
3:A:405:NDG:H8C1	4:A:596:HOH:O	1.99	0.61
1:A:68:GLN:H	1:A:68:GLN:NE2	1.94	0.61
1:A:51:PHE:H	1:A:70:ASN:HD22	1.49	0.61
1:A:207:ARG:NH1	4:A:698:HOH:O	2.13	0.60
1:A:137:HIS:CD2	4:A:838:HOH:O	2.52	0.59
1:A:268:ARG:CG	1:A:268:ARG:HH11	2.09	0.59
1:A:268:ARG:HG3	1:A:268:ARG:NH1	2.13	0.57
1:A:49:ASN:H	1:A:70:ASN:HD21	1.53	0.57
1:A:94:LEU:H	1:A:116:ASN:HD22	1.52	0.57
1:A:215:LEU:H	1:A:237:ASN:ND2	2.04	0.56
1:A:141:CYS:H	1:A:165:ASN:ND2	2.03	0.56
1:A:245:GLU:HG2	1:A:245:GLU:O	2.06	0.55
1:A:220:ARG:H	1:A:220:ARG:HD2	1.69	0.54
1:A:239:LEU:H	1:A:261:ASN:ND2	2.05	0.54
1:A:47:GLN:CG	1:A:47:GLN:CA	2.84	0.54
1:A:143:LEU:H	1:A:165:ASN:HD22	1.56	0.53

Continued on next page...

Continued from previous page...

Atom-1	Atom-2	Distance(Å)	Clash(Å)
1:A:266:ASP:CG	1:A:268:ARG:NH1	2.63	0.52
1:A:295:GLN:NE2	1:A:295:GLN:C	2.63	0.52
2:A:401:NDG:C8	4:A:779:HOH:O	2.59	0.51
1:A:49:ASN:H	1:A:70:ASN:ND2	2.08	0.51
1:A:94:LEU:H	1:A:116:ASN:ND2	2.10	0.50
1:A:266:ASP:CG	1:A:268:ARG:HH12	2.13	0.49
1:A:112:ASP:HA	1:A:137:HIS:HB2	1.94	0.49
1:A:47:GLN:CB	1:A:47:GLN:CD	2.72	0.49
1:A:119:LEU:O	4:A:748:HOH:O	2.20	0.49
1:A:51:PHE:H	1:A:70:ASN:ND2	2.12	0.47
1:A:303:ARG:NH1	1:A:303:ARG:CG	2.75	0.47
1:A:92:ASN:HB2	1:A:116:ASN:HD21	1.80	0.47
1:A:237:ASN:CB	1:A:261:ASN:HD21	2.24	0.45
1:A:265:CYS:HB3	1:A:302:LEU:HD11	1.99	0.45
1:A:245:GLU:CG	4:A:721:HOH:O	2.66	0.44
1:A:33:MET:HG3	1:A:34:LEU:HD13	1.99	0.43
1:A:117:ARG:HG2	4:A:732:HOH:O	1.99	0.43
1:A:295:GLN:NE2	1:A:295:GLN:O	2.52	0.43
2:A:404:NDG:H6C1	4:A:855:HOH:O	2.17	0.42
1:A:32:PRO:HG2	1:A:58:LEU:HD23	2.00	0.42
1:A:226:LEU:HD23	1:A:226:LEU:HA	1.88	0.41
1:A:294:ARG:NH2	1:A:306:ASP:HB3	2.35	0.41
1:A:245:GLU:HG3	4:A:721:HOH:O	2.20	0.40

All (4) symmetry-related close contacts are listed below. The label for Atom-2 includes the symmetry operator and encoded unit-cell translations to be applied.

Atom-1	Atom-2	Distance(Å)	Clash(Å)
4:A:505:HOH:O	4:A:568:HOH:O[4_455]	1.45	0.75
4:A:556:HOH:O	4:A:575:HOH:O[3_645]	1.83	0.37
4:A:522:HOH:O	4:A:579:HOH:O[3_655]	2.12	0.08
4:A:553:HOH:O	4:A:559:HOH:O[3_655]	2.17	0.03

5.3 Torsion angles

5.3.1 Protein backbone ⓘ

In the following table, the Percentiles column shows the percent Ramachandran outliers of the chain as a percentile score with respect to all X-ray entries followed by that with respect to entries of similar resolution. The Analysed column shows the number of residues for which the backbone conformation was analysed, and the total number of residues.

Mol	Chain	Analysed	Favoured	Allowed	Outliers	Percentiles	
1	A	280/282 (99%)	267 (95%)	13 (5%)	0	100	100

There are no Ramachandran outliers to report.

5.3.2 Protein sidechains ⓘ

In the following table, the Percentiles column shows the percent sidechain outliers of the chain as a percentile score with respect to all X-ray entries followed by that with respect to entries of similar resolution. The Analysed column shows the number of residues for which the sidechain conformation was analysed, and the total number of residues.

Mol	Chain	Analysed	Rotameric	Outliers	Percentiles	
1	A	250/250 (100%)	238 (95%)	12 (5%)	35	15

All (12) residues with a non-rotameric sidechain are listed below:

Mol	Chain	Res	Type
1	A	30	SER
1	A	34	LEU
1	A	47	GLN
1	A	68	GLN
1	A	209	LEU
1	A	214	ARG
1	A	220	ARG
1	A	268	ARG
1	A	270	ARG
1	A	295	GLN
1	A	303	ARG
1	A	304	ASP

Some sidechains can be flipped to improve hydrogen bonding and reduce clashes. All (10) such sidechains are listed below:

Mol	Chain	Res	Type
1	A	68	GLN
1	A	70	ASN
1	A	92	ASN
1	A	116	ASN
1	A	137	HIS
1	A	165	ASN
1	A	180	ASN
1	A	237	ASN

Continued on next page...

Continued from previous page...

Mol	Chain	Res	Type
1	A	261	ASN
1	A	295	GLN

5.3.3 RNA ⓘ

There are no RNA chains in this entry.

5.4 Non-standard residues in protein, DNA, RNA chains ⓘ

Mogul failed to run properly - this section will therefore be empty.

5.5 Carbohydrates ⓘ

Mogul failed to run properly - this section will therefore be empty.

5.6 Ligand geometry ⓘ

Mogul failed to run properly - this section will therefore be empty.

5.7 Other polymers ⓘ

Mogul failed to run properly - this section will therefore be empty.

5.8 Polymer linkage issues

There are no chain breaks in this entry.

6 Fit of model and data ⓘ

6.1 Protein, DNA and RNA chains ⓘ

In the following table, the column labelled ‘#RSRZ> 2’ contains the number (and percentage) of RSRZ outliers, followed by percent RSRZ outliers for the chain as percentile scores relative to all X-ray entries and entries of similar resolution. The OWAB column contains the minimum, median, 95th percentile and maximum values of the occupancy-weighted average B-factor per residue. The column labelled ‘Q< 0.9’ lists the number of (and percentage) of residues with an average occupancy less than 0.9.

Mol	Chain	Analysed	<RSRZ>	#RSRZ>2	OWAB(Å ²)	Q<0.9
1	A	282/282 (100%)	-0.23	7 (2%) 54 47	10, 19, 37, 54	0

All (7) RSRZ outliers are listed below:

Mol	Chain	Res	Type	RSRZ
1	A	29	PRO	5.3
1	A	278	ARG	3.2
1	A	280	ARG	2.9
1	A	30	SER	2.6
1	A	304	ASP	2.4
1	A	303	ARG	2.3
1	A	117	ARG	2.1

6.2 Non-standard residues in protein, DNA, RNA chains ⓘ

There are no non-standard protein/DNA/RNA residues in this entry.

6.3 Carbohydrates ⓘ

In the following table, the Atoms column lists the number of modelled atoms in the group and the number defined in the chemical component dictionary. LLDF column lists the quality of electron density of the group with respect to its neighbouring residues in protein, DNA or RNA chains. The B-factors column lists the minimum, median, 95th percentile and maximum values of B factors of atoms in the group. The column labelled ‘Q< 0.9’ lists the number of atoms with occupancy less than 0.9.

Mol	Type	Chain	Res	Atoms	RSR	LLDF	B-factors(Å ²)	Q<0.9
2	NDG	A	403	14/15	0.21	6.55	27,32,36,36	0
2	NDG	A	401	14/15	0.24	3.21	36,45,54,62	0
2	NDG	A	404	14/15	0.30	2.47	39,43,50,54	0

Continued on next page...

Continued from previous page...

Mol	Type	Chain	Res	Atoms	RSR	LLDF	B-factors(\AA^2)	Q<0.9
2	NDG	A	402	14/15	0.34	-	68,70,72,72	0

6.4 Ligands

In the following table, the Atoms column lists the number of modelled atoms in the group and the number defined in the chemical component dictionary. LLDF column lists the quality of electron density of the group with respect to its neighbouring residues in protein, DNA or RNA chains. The B-factors column lists the minimum, median, 95th percentile and maximum values of B factors of atoms in the group. The column labelled 'Q< 0.9' lists the number of atoms with occupancy less than 0.9.

Mol	Type	Chain	Res	Atoms	RSR	LLDF	B-factors(\AA^2)	Q<0.9
3	NDG	A	405	14/15	0.41	23.51	59,69,71,73	0

6.5 Other polymers

There are no such residues in this entry.