



Full wwPDB X-ray Structure Validation Report

Feb 28, 2014 – 02:03 AM GMT

PDB ID : 2PDX
Title : Human aldose reductase double mutant S302R-C303D complexed with zopol-
restat.
Authors : Steuber, H.; Heine, A.; Klebe, G.
Deposited on : 2007-04-01
Resolution : 1.65 Å(reported)

This is a full wwPDB validation report for a publicly released PDB entry.
We welcome your comments at validation@mail.wwpdb.org
A user guide is available at <http://wwpdb.org/ValidationPDFNotes.html>

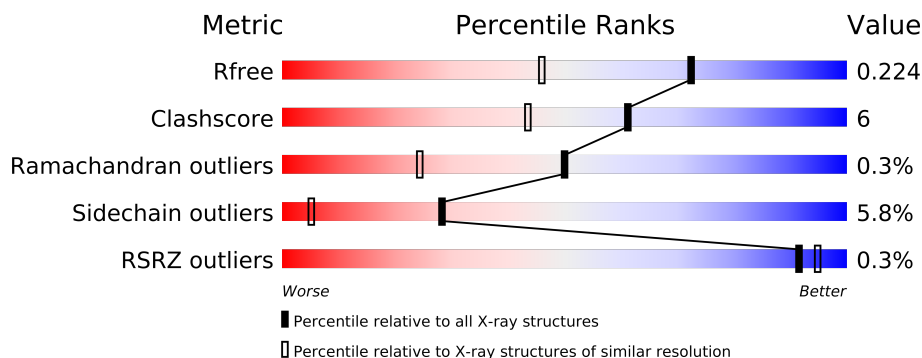
The following versions of software and data (see [references](#)) were used in the production of this report:

MolProbity : 4.02b-467
Mogul : 1.15 2013
Xtriage (Phenix) : dev-1323
EDS : stable22639
Percentile statistics : 21963
Refmac : 5.8.0049
CCP4 : 6.3.0 (Settle)
Ideal geometry (proteins) : Engh & Huber (2001)
Ideal geometry (DNA, RNA) : Parkinson et. al. (1996)
Validation Pipeline (wwPDB-VP) : stable22683

1 Overall quality at a glance


The reported resolution of this entry is 1.65 Å.

Percentile scores (ranging between 0-100) for global validation metrics of the entry are shown in the following graphic. The table shows the number of entries on which the scores are based.



Metric	Whole archive (#Entries)	Similar resolution (#Entries, resolution range(Å))
R_{free}	66092	1404 (1.68-1.64)
Clashscore	79885	1001 (1.66-1.66)
Ramachandran outliers	78287	1581 (1.68-1.64)
Sidechain outliers	78261	1580 (1.68-1.64)
RSRZ outliers	66119	1404 (1.68-1.64)

The table below summarises the geometric issues observed across the polymeric chains and their fit to the electron density. The red, orange, yellow and green segments on the lower bar indicate the fraction of residues that contain outliers for ≥ 3 , 2, 1 and 0 types of geometric quality criteria. The upper red bar (where present) indicates the fraction of residues that have poor fit to the electron density.

Mol	Chain	Length	Quality of chain
1	A	316	

2 Entry composition i

There are 4 unique types of molecules in this entry. The entry contains 2865 atoms, of which 0 are hydrogen and 0 are deuterium.

In the tables below, the ZeroOcc column contains the number of atoms modelled with zero occupancy, the AltConf column contains the number of residues with at least one atom in alternate conformation and the Trace column contains the number of residues modelled with at most 2 atoms.

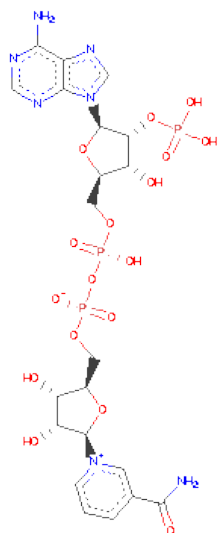
- Molecule 1 is a protein called Aldose reductase.

Mol	Chain	Residues	Atoms					ZeroOcc	AltConf	Trace
			Total	C	N	O	S			
1	A	312	2513	1614	426	461	12	0	4	0

There are 3 discrepancies between the modelled and reference sequences:

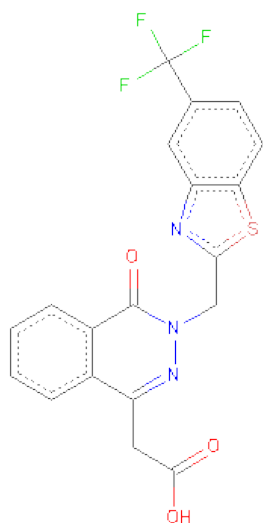
Chain	Residue	Modelled	Actual	Comment	Reference
A	4	ILE	LEU	CONFLICT	UNP P15121
A	302	ARG	SER	ENGINEERED	UNP P15121
A	303	ASP	CYS	ENGINEERED	UNP P15121

- Molecule 2 is NADP NICOTINAMIDE-ADENINE-DINUCLEOTIDEPHOSPHATE (three-letter code: NAP) (formula: $C_{21}H_{28}N_7O_{17}P_3$).



Mol	Chain	Residues	Atoms					ZeroOcc	AltConf
			Total	C	N	O	P		
2	A	1	48	21	7	17	3	0	0

- Molecule 3 is 3,4-DIHYDRO-4-OXO-3-((5-TRIFLUOROMETHYL-2-BENZOTHIASOLYL)METHYL)-1-PHTHALAZINEACETIC ACID (three-letter code: ZST) (formula: $C_{19}H_{12}F_3N_3O_3S$).



Mol	Chain	Residues	Atoms						ZeroOcc	AltConf
			Total	C	F	N	O	S		
3	A	1	29	19	3	3	3	1	0	0

- Molecule 4 is water.

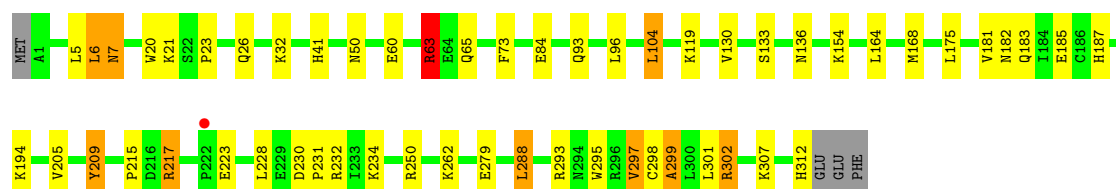
Mol	Chain	Residues	Atoms		ZeroOcc	AltConf
4	A	275	Total	O	0	0
			275	275		

3 Residue-property plots i

These plots are drawn for all protein, RNA and DNA chains in the entry. The first graphic for a chain summarises the proportions of errors displayed in the second graphic. The second graphic shows the sequence view annotated by issues in geometry and electron density. Residues are color-coded according to the number of geometric quality criteria for which they contain at least one outlier: green = 0, yellow = 1, orange = 2 and red = 3 or more. A red dot above a residue indicates a poor fit to the electron density (RSRZ > 2). Stretches of 2 or more consecutive residues without any outlier are shown as a green connector. Residues present in the sample, but not in the model, are shown in grey.

- Molecule 1: Aldose reductase

Chain A: 



4 Data and refinement statistics

Property	Value	Source
Space group	P 1 21 1	Depositor
Cell constants a, b, c, α , β , γ	49.29Å 67.26Å 47.80Å 90.00° 91.40° 90.00°	Depositor
Resolution (Å)	30.00 – 1.65 19.87 – 1.65	Depositor EDS
% Data completeness (in resolution range)	85.9 (30.00-1.65) 90.4 (19.87-1.65)	Depositor EDS
R_{merge}	0.07	Depositor
R_{sym}	0.07	Depositor
$\langle I/\sigma(I) \rangle$ ¹	1.92 (at 1.65Å)	Xtriage
Refinement program	SHELXL-97	Depositor
R, R_{free}	0.174 , 0.222 0.188 , 0.224	Depositor DCC
R_{free} test set	1691 reflections (5.22%)	DCC
Wilson B-factor (Å ²)	14.6	Xtriage
Anisotropy	0.144	Xtriage
Bulk solvent k_{sol} (e/Å ³), B_{sol} (Å ²)	0.36 , 41.2	EDS
Estimated twinning fraction	0.009 for -l,k,h 0.036 for -h,-k,l 0.027 for l,-k,h	Xtriage
L-test for twinning	$\langle L \rangle = 0.49$, $\langle L^2 \rangle = 0.32$	Xtriage
Outliers	0 of 34087 reflections	Xtriage
F_o, F_c correlation	0.95	EDS
Total number of atoms	2865	wwPDB-VP
Average B, all atoms (Å ²)	17.0	wwPDB-VP

Xtriage's analysis on translational NCS is as follows: *The largest off-origin peak in the Patterson function is 6.84% of the height of the origin peak. No significant pseudotranslation is detected.*

¹Intensities estimated from amplitudes.

5 Model quality

5.1 Standard geometry

Bond lengths and bond angles in the following residue types are not validated in this section: ZST, NAP

The Z score for a bond length (or angle) is the number of standard deviations the observed value is removed from the expected value. A bond length (or angle) with $|Z| > 5$ is considered an outlier worth inspection. RMSZ is the root-mean-square of all Z scores of the bond lengths (or angles).

Mol	Chain	Bond lengths		Bond angles	
		RMSZ	$\# Z > 5$	RMSZ	$\# Z > 5$
1	A	0.41	0/2590	1.14	11/3517 (0.3%)

There are no bond length outliers.

All (11) bond angle outliers are listed below:

Mol	Chain	Res	Type	Atoms	Z	Observed(°)	Ideal(°)
1	A	209	TYR	CB-CG-CD1	8.93	126.36	121.00
1	A	209	TYR	CA-CB-CG	8.52	129.59	113.40
1	A	209	TYR	CG-CD1-CE1	7.09	126.97	121.30
1	A	217	ARG	NE-CZ-NH1	6.46	123.53	120.30
1	A	217	ARG	NE-CZ-NH2	-5.87	117.36	120.30
1	A	302	ARG	NE-CZ-NH2	-5.81	117.40	120.30
1	A	288	LEU	CA-CB-CG	5.75	128.53	115.30
1	A	232	ARG	NE-CZ-NH1	-5.57	117.51	120.30
1	A	63	ARG	CD-NE-CZ	5.21	130.89	123.60
1	A	307	LYS	C-N-CA	5.12	134.51	121.70
1	A	250	ARG	NE-CZ-NH1	-5.06	117.77	120.30

There are no chirality outliers.

There are no planarity outliers.

5.2 Close contacts

In the following table, the Non-H and H(model) columns list the number of non-hydrogen atoms and hydrogen atoms in the chain respectively. The H(added) column lists the number of hydrogens added by MolProbity. The Clashes column lists the number of clashes within the asymmetric unit, and the number in parentheses is this value normalized per 1000 atoms of the molecule in the chain. The Symm-Clashes column gives symmetry related clashes, in the same way as for the Clashes column.

Mol	Chain	Non-H	H(model)	H(added)	Clashes	Symm-Clashes
1	A	2513	0	2532	30	0
2	A	48	0	25	3	0
3	A	29	0	11	0	0
4	A	275	0	0	7	0
All	All	2865	0	2568	30	0

Clashscore is defined as the number of clashes calculated for the entry per 1000 atoms (including hydrogens) of the entry. The overall clashscore for this entry is 6.

All (30) close contacts within the same asymmetric unit are listed below.

Atom-1	Atom-2	Distance(Å)	Clash(Å)
1:A:32:LYS:HE3	1:A:60[A]:GLU:OE1	1.85	0.77
1:A:164:LEU:O	1:A:168[B]:MET:HG2	1.87	0.74
1:A:136:ASN:HB2	4:A:817:HOH:O	1.96	0.64
1:A:230:ASP:O	1:A:234:LYS:HG3	2.02	0.60
1:A:60[B]:GLU:OE2	1:A:63:ARG:HD3	2.02	0.60
1:A:312:HIS:HD2	4:A:723:HOH:O	1.87	0.57
1:A:185:GLU:OE2	1:A:187:HIS:HE1	1.88	0.56
1:A:217:ARG:CZ	1:A:297:VAL:HG22	2.37	0.54
1:A:84:GLU:OE2	1:A:133:SER:HB2	2.08	0.53
1:A:20:TRP:CE3	1:A:21:LYS:HE3	2.45	0.52
1:A:5:LEU:HD13	1:A:6:LEU:O	2.11	0.51
1:A:279:GLU:HG3	4:A:798:HOH:O	2.12	0.50
1:A:23:PRO:HG2	1:A:26:GLN:OE1	2.12	0.49
1:A:215:PRO:HD2	2:A:500:NAP:H4B	1.94	0.49
1:A:194:LYS:HG2	4:A:841:HOH:O	2.14	0.47
1:A:183:GLN:OE1	2:A:500:NAP:H2N	2.15	0.46
1:A:217:ARG:CD	1:A:297:VAL:HG13	2.46	0.46
1:A:302:ARG:HG3	4:A:678:HOH:O	2.14	0.46
1:A:181:VAL:HA	1:A:205:VAL:O	2.17	0.45
1:A:7:ASN:ND2	4:A:647:HOH:O	2.49	0.45
1:A:93[A]:GLN:NE2	4:A:845:HOH:O	2.50	0.45
1:A:231:PRO:O	1:A:234:LYS:HB2	2.17	0.45
1:A:298:CYS:O	1:A:299:ALA:HB2	2.18	0.43
1:A:41:HIS:HA	1:A:73:PHE:O	2.19	0.43
1:A:96:LEU:HD23	1:A:104:LEU:HD13	2.03	0.41
1:A:130:VAL:HG21	1:A:301:LEU:CD1	2.51	0.41
1:A:295:TRP:CH2	1:A:297:VAL:HG23	2.55	0.41
1:A:130:VAL:HG21	1:A:301:LEU:HD13	2.02	0.41
1:A:96:LEU:CD2	1:A:104:LEU:HD13	2.50	0.41
1:A:262:LYS:O	2:A:500:NAP:H8A	2.22	0.40

There are no symmetry-related clashes.

5.3 Torsion angles

5.3.1 Protein backbone ⓘ

In the following table, the Percentiles column shows the percent Ramachandran outliers of the chain as a percentile score with respect to all X-ray entries followed by that with respect to entries of similar resolution. The Analysed column shows the number of residues for which the backbone conformation was analysed, and the total number of residues.

Mol	Chain	Analysed	Favoured	Allowed	Outliers	Percentiles
1	A	314/316 (99%)	308 (98%)	5 (2%)	1 (0%)	50 24

All (1) Ramachandran outliers are listed below:

Mol	Chain	Res	Type
1	A	299	ALA

5.3.2 Protein sidechains ⓘ

In the following table, the Percentiles column shows the percent sidechain outliers of the chain as a percentile score with respect to all X-ray entries followed by that with respect to entries of similar resolution. The Analysed column shows the number of residues for which the sidechain conformation was analysed, and the total number of residues.

Mol	Chain	Analysed	Rotameric	Outliers	Percentiles
1	A	281/281 (100%)	265 (94%)	16 (6%)	29 5

All (16) residues with a non-rotameric sidechain are listed below:

Mol	Chain	Res	Type
1	A	6	LEU
1	A	7	ASN
1	A	50	ASN
1	A	63	ARG
1	A	65	GLN
1	A	104	LEU
1	A	119	LYS
1	A	154	LYS
1	A	175	LEU
1	A	182	ASN
1	A	209	TYR
1	A	223	GLU
1	A	228	LEU

Continued on next page...

Continued from previous page...

Mol	Chain	Res	Type
1	A	288	LEU
1	A	293	ARG
1	A	297	VAL

Some sidechains can be flipped to improve hydrogen bonding and reduce clashes. All (8) such sidechains are listed below:

Mol	Chain	Res	Type
1	A	7	ASN
1	A	50	ASN
1	A	59	GLN
1	A	163	HIS
1	A	182	ASN
1	A	187	HIS
1	A	283	GLN
1	A	312	HIS

5.3.3 RNA ⓘ

There are no RNA chains in this entry.

5.4 Non-standard residues in protein, DNA, RNA chains ⓘ

There are no non-standard protein/DNA/RNA residues in this entry.

5.5 Carbohydrates ⓘ

There are no carbohydrates in this entry.

5.6 Ligand geometry ⓘ

2 ligands are modelled in this entry.

In the following table, the Counts columns list the number of bonds (or angles) for which Mogul statistics could be retrieved, the number of bonds (or angles) that are observed in the model and the number of bonds (or angles) that are defined in the chemical component dictionary. The Link column lists molecule types, if any, to which the group is linked. The Z score for a bond length (or angle) is the number of standard deviations the observed value is removed from the expected value. A bond length (or angle) with $|Z| > 2$ is considered an outlier worth inspection. RMSZ is the root-mean-square of all Z scores of the bond lengths (or angles).

Mol	Type	Chain	Res	Link	Bond lengths			Bond angles		
					Counts	RMSZ	# Z > 2	Counts	RMSZ	# Z > 2
2	NAP	A	500	-	52,52,52	1.44	8 (15%)	80,80,80	1.78	18 (22%)
3	ZST	A	600	-	32,32,32	1.28	2 (6%)	44,48,48	2.10	16 (36%)

In the following table, the Chirals column lists the number of chiral outliers, the number of chiral centers analysed, the number of these observed in the model and the number defined in the chemical component dictionary. Similar counts are reported in the Torsion and Rings columns. '-' means no outliers of that kind were identified.

Mol	Type	Chain	Res	Link	Chirals	Torsions	Rings
2	NAP	A	500	-	-	0/35/67/67	0/3/5/5
3	ZST	A	600	-	-	0/11/14/14	0/0/4/4

All (10) bond length outliers are listed below:

Mol	Chain	Res	Type	Atoms	Z	Observed(Å)	Ideal(Å)
3	A	600	ZST	C9-C10	3.96	1.55	1.51
2	A	500	NAP	O4D-C1D	3.70	1.47	1.41
3	A	600	ZST	C11-S1	-3.36	1.70	1.74
2	A	500	NAP	C2A-N1A	2.91	1.39	1.33
2	A	500	NAP	C6N-N1N	2.80	1.43	1.35
2	A	500	NAP	C2N-N1N	2.73	1.38	1.35
2	A	500	NAP	C4N-C3N	2.42	1.43	1.39
2	A	500	NAP	C2D-C1D	-2.19	1.50	1.53
2	A	500	NAP	C2A-N3A	2.16	1.36	1.32
2	A	500	NAP	C4A-N9A	-2.16	1.34	1.37

All (34) bond angle outliers are listed below:

Mol	Chain	Res	Type	Atoms	Z	Observed(°)	Ideal(°)
3	A	600	ZST	C10-C9-N1	-6.41	101.71	111.65
2	A	500	NAP	N3A-C2A-N1A	-5.59	124.03	128.71
2	A	500	NAP	C2N-C3N-C4N	4.75	123.69	118.31
2	A	500	NAP	O7N-C7N-C3N	-4.72	114.25	119.58
2	A	500	NAP	C8A-N9A-C4A	-3.81	103.99	106.90
2	A	500	NAP	O7N-C7N-N7N	3.76	128.03	122.59
2	A	500	NAP	C6A-C5A-C4A	3.75	124.13	117.25
3	A	600	ZST	C14-C15-C16	3.58	123.37	117.68
3	A	600	ZST	C4-N2-N1	-3.51	115.10	118.75
2	A	500	NAP	O4B-C1B-C2B	-3.30	103.86	106.95
3	A	600	ZST	C16-C12-C11	-3.00	117.75	121.01
2	A	500	NAP	C4B-O4B-C1B	3.00	113.00	109.75
2	A	500	NAP	N3A-C4A-N9A	2.99	130.83	125.43

Continued on next page...

Continued from previous page...

Mol	Chain	Res	Type	Atoms	Z	Observed(°)	Ideal(°)
3	A	600	ZST	C14-C15-C19	-2.98	115.57	119.99
3	A	600	ZST	C3-C4-N2	2.91	125.75	122.24
3	A	600	ZST	C11-C12-N3	2.84	115.04	108.37
2	A	500	NAP	C5A-C6A-N6A	2.82	127.08	120.72
2	A	500	NAP	C3N-C7N-N7N	-2.74	114.65	117.77
3	A	600	ZST	C12-C11-S1	-2.64	108.71	112.03
3	A	600	ZST	C9-N1-N2	-2.64	110.88	113.58
3	A	600	ZST	C8-C3-C4	2.64	125.44	122.92
2	A	500	NAP	O3X-P2B-O2X	2.49	117.31	107.61
3	A	600	ZST	C17-C4-N2	-2.48	110.81	116.25
2	A	500	NAP	C3N-C2N-N1N	-2.43	116.26	120.36
3	A	600	ZST	O3-C18-C17	2.35	119.70	113.80
2	A	500	NAP	C5A-C4A-N3A	-2.28	120.73	125.70
3	A	600	ZST	C5-C2-C3	2.26	121.61	118.62
2	A	500	NAP	O2N-PN-O1N	-2.23	112.01	118.72
3	A	600	ZST	C17-C4-C3	2.21	123.44	120.89
2	A	500	NAP	O3B-C3B-C4B	-2.21	104.58	111.08
2	A	500	NAP	O2A-PA-O1A	2.14	124.17	112.21
3	A	600	ZST	O2-C18-C17	-2.13	117.94	123.19
3	A	600	ZST	C4-C17-C18	-2.03	109.00	112.93
2	A	500	NAP	O4B-C1B-N9A	-2.02	106.56	108.44

There are no chirality outliers.

There are no torsion outliers.

There are no ring outliers.

5.7 Other polymers ⓘ

There are no such residues in this entry.

5.8 Polymer linkage issues

There are no chain breaks in this entry.

6 Fit of model and data

6.1 Protein, DNA and RNA chains

In the following table, the column labelled ‘#RSRZ> 2’ contains the number (and percentage) of RSRZ outliers, followed by percent RSRZ outliers for the chain as percentile scores relative to all X-ray entries and entries of similar resolution. The OWAB column contains the minimum, median, 95th percentile and maximum values of the occupancy-weighted average B-factor per residue. The column labelled ‘Q< 0.9’ lists the number of (and percentage) of residues with an average occupancy less than 0.9.

Mol	Chain	Analysed	<RSRZ>	#RSRZ>2	OWAB(Å ²)	Q<0.9
1	A	312/316 (98%)	-0.22	1 (0%) 91 95	7, 14, 31, 51	0

All (1) RSRZ outliers are listed below:

Mol	Chain	Res	Type	RSRZ
1	A	222	PRO	2.5

6.2 Non-standard residues in protein, DNA, RNA chains

There are no non-standard protein/DNA/RNA residues in this entry.

6.3 Carbohydrates

There are no carbohydrates in this entry.

6.4 Ligands

In the following table, the Atoms column lists the number of modelled atoms in the group and the number defined in the chemical component dictionary. LLDF column lists the quality of electron density of the group with respect to its neighbouring residues in protein, DNA or RNA chains. The B-factors column lists the minimum, median, 95th percentile and maximum values of B factors of atoms in the group. The column labelled ‘Q< 0.9’ lists the number of atoms with occupancy less than 0.9.

Mol	Type	Chain	Res	Atoms	RSR	LLDF	B-factors(Å ²)	Q<0.9
3	ZST	A	600	29/29	0.08	-0.17	6,10,23,35	0
2	NAP	A	500	48/48	0.06	-0.91	5,9,13,17	0

6.5 Other polymers ⓘ

There are no such residues in this entry.