



# wwPDB X-ray Structure Validation Summary Report i

Feb 27, 2014 – 06:28 AM GMT

PDB ID : 2PFQ  
Title : Manganese promotes catalysis in a DNA polymerase lambda-DNA crystal  
Authors : Garcia-Diaz, M.; Bebenek, K.; Krahn, J.M.; Pedersen, L.C.; Kunkel, T.A.  
Deposited on : 2007-04-05  
Resolution : 2.10 Å(reported)

This is a wwPDB validation summary report for a publicly released PDB entry.

We welcome your comments at [validation@mail.wwpdb.org](mailto:validation@mail.wwpdb.org)

A user guide is available at <http://wwpdb.org/ValidationPDFNotes.html>

---

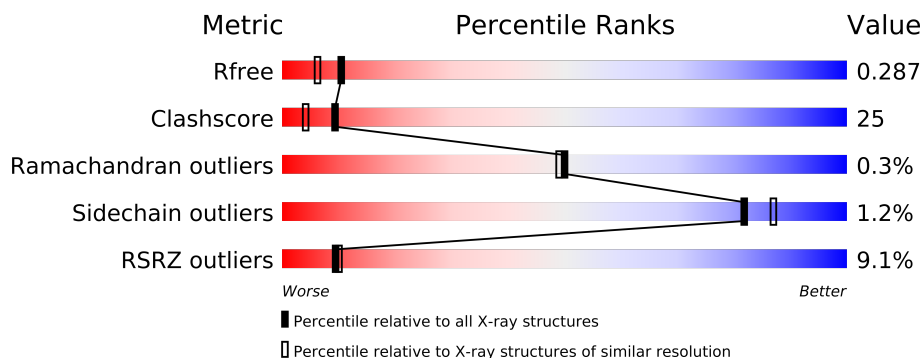
The following versions of software and data (see [references](#)) were used in the production of this report:

MolProbity	:	4.02b-467
Mogul	:	1.15 2013
Xtriage (Phenix)	:	dev-1323
EDS	:	stable22639
Percentile statistics	:	21963
Refmac	:	5.8.0049
CCP4	:	6.3.0 (Settle)
Ideal geometry (proteins)	:	Engh & Huber (2001)
Ideal geometry (DNA, RNA)	:	Parkinson et. al. (1996)
Validation Pipeline (wwPDB-VP)	:	stable22683

# 1 Overall quality at a glance

The reported resolution of this entry is 2.10 Å.

Percentile scores (ranging between 0-100) for global validation metrics of the entry are shown in the following graphic. The table shows the number of entries on which the scores are based.



Metric	Whole archive (#Entries)	Similar resolution (#Entries, resolution range(Å))
$R_{free}$	66092	3012 (2.10-2.10)
Clashscore	79885	3649 (2.10-2.10)
Ramachandran outliers	78287	3610 (2.10-2.10)
Sidechain outliers	78261	3611 (2.10-2.10)
RSRZ outliers	66119	3013 (2.10-2.10)

The table below summarises the geometric issues observed across the polymeric chains and their fit to the electron density. The red, orange, yellow and green segments on the lower bar indicate the fraction of residues that contain outliers for  $\geq 3$ , 2, 1 and 0 types of geometric quality criteria. The upper red bar (where present) indicates the fraction of residues that have poor fit to the electron density.

Mol	Chain	Length	Quality of chain
1	T	11	
2	P	7	
3	D	4	
4	A	335	

## 2 Entry composition

There are 10 unique types of molecules in this entry. The entry contains 3302 atoms, of which 0 are hydrogen and 0 are deuterium.

In the tables below, the ZeroOcc column contains the number of atoms modelled with zero occupancy, the AltConf column contains the number of residues with at least one atom in alternate conformation and the Trace column contains the number of residues modelled with at most 2 atoms.

- Molecule 1 is a DNA chain called Template.

Mol	Chain	Residues	Atoms					ZeroOcc	AltConf	Trace
1	T	11	Total	C	N	O	P	0	0	0
			225	107	43	65	10			

- Molecule 2 is a DNA chain called Primer.

Mol	Chain	Residues	Atoms					ZeroOcc	AltConf	Trace
2	P	7	Total	C	N	O	P	0	2	0
			157	76	29	45	7			

- Molecule 3 is a DNA chain called Downstream Primer.

Mol	Chain	Residues	Atoms					ZeroOcc	AltConf	Trace
3	D	4	Total	C	N	O	P	0	0	0
			83	38	16	25	4			

- Molecule 4 is a protein called DNA polymerase lambda.

Mol	Chain	Residues	Atoms					ZeroOcc	AltConf	Trace
4	A	324	Total	C	N	O	S	0	8	0
			2565	1603	472	479	11			

There are 2 discrepancies between the modelled and reference sequences:

Chain	Residue	Modelled	Actual	Comment	Reference
A	241	MET	-	INITIATING METHIONINE	UNP Q9UGP5
A	543	ALA	CYS	ENGINEERED	UNP Q9UGP5

- Molecule 5 is MAGNESIUM ION (three-letter code: MG) (formula: Mg).

Mol	Chain	Residues	Atoms		ZeroOcc	AltConf
5	A	1	Total	Mg	0	1
			1	1		

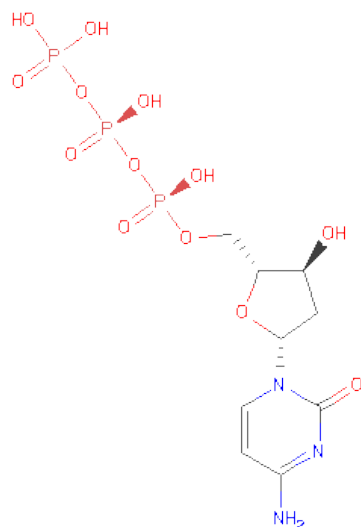
- Molecule 6 is SODIUM ION (three-letter code: NA) (formula: Na).

Mol	Chain	Residues	Atoms		ZeroOcc	AltConf
6	A	2	Total	Na	0	1
			2	2		

- Molecule 7 is MANGANESE (II) ION (three-letter code: MN) (formula: Mn).

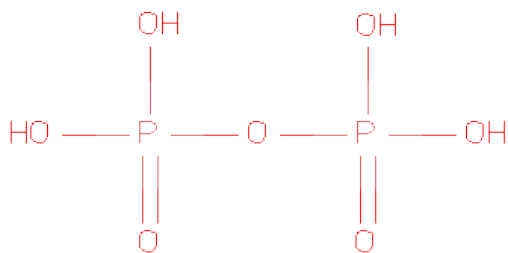
Mol	Chain	Residues	Atoms		ZeroOcc	AltConf
7	A	2	Total	Mn	0	2
			2	2		

- Molecule 8 is 2'-DEOXYCYTIDINE-5'-TRIPHOSPHATE (three-letter code: DCP) (formula: C<sub>9</sub>H<sub>16</sub>N<sub>3</sub>O<sub>13</sub>P<sub>3</sub>).



Mol	Chain	Residues	Atoms					ZeroOcc	AltConf
8	A	1	Total	C	N	O	P	0	1
			28	9	3	13	3		

- Molecule 9 is PYROPHOSPHATE (three-letter code: PPV) (formula: H<sub>4</sub>O<sub>7</sub>P<sub>2</sub>).



Mol	Chain	Residues	Atoms			ZeroOcc	AltConf
9	A	1	Total	O	P	0	1
			9	7	2		

- Molecule 10 is water.

Mol	Chain	Residues	Atoms		ZeroOcc	AltConf
10	A	166	Total	O	0	0
			166	166		
10	D	6	Total	O	0	0
			6	6		
10	P	26	Total	O	0	0
			26	26		
10	T	32	Total	O	0	0
			32	32		

### 3 Residue-property plots i

These plots are drawn for all protein, RNA and DNA chains in the entry. The first graphic for a chain summarises the proportions of errors displayed in the second graphic. The second graphic shows the sequence view annotated by issues in geometry and electron density. Residues are color-coded according to the number of geometric quality criteria for which they contain at least one outlier: green = 0, yellow = 1, orange = 2 and red = 3 or more. A red dot above a residue indicates a poor fit to the electron density ( $RSRZ > 2$ ). Stretches of 2 or more consecutive residues without any outlier are shown as a green connector. Residues present in the sample, but not in the model, are shown in grey.

- Molecule 1: Template

Chain T:



- Molecule 2: Primer

Chain P:



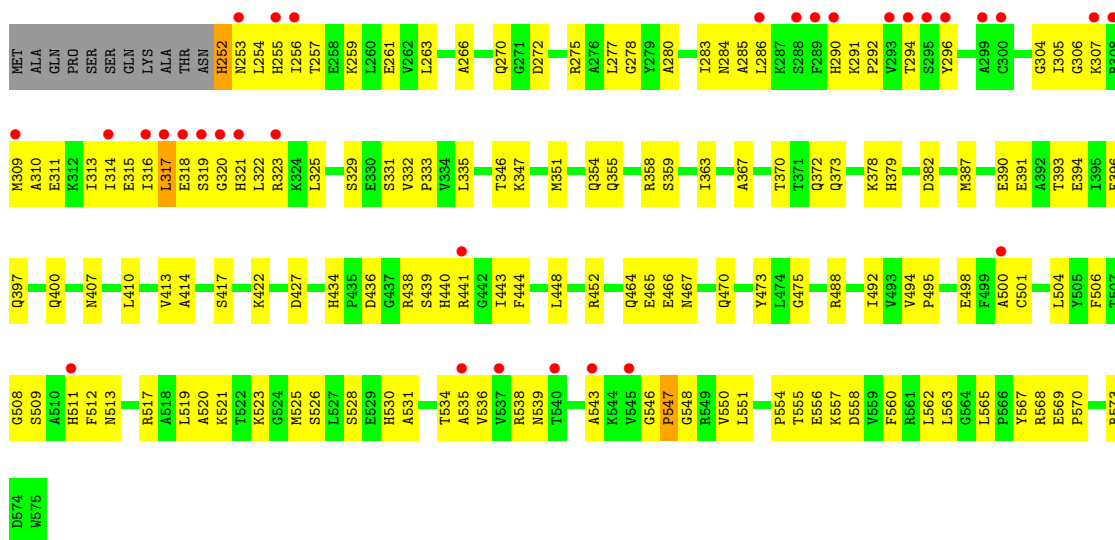
- Molecule 3: Downstream Primer

Chain D:



- Molecule 4: DNA polymerase lambda

Chain A:



## 4 Data and refinement statistics

Property	Value	Source
Space group	P 21 21 21	Depositor
Cell constants a, b, c, $\alpha$ , $\beta$ , $\gamma$	56.09Å 63.48Å 139.78Å 90.00° 90.00° 90.00°	Depositor
Resolution (Å)	50.00 – 2.10 36.02 – 2.10	Depositor EDS
% Data completeness (in resolution range)	85.9 (50.00-2.10) 85.7 (36.02-2.10)	Depositor EDS
$R_{merge}$	0.06	Depositor
$R_{sym}$	(Not available)	Depositor
$\langle I/\sigma(I) \rangle$ <sup>1</sup>	1.90 (at 2.10Å)	Xtriage
Refinement program	CNS	Depositor
R, $R_{free}$	0.256 , 0.287 0.256 , 0.287	Depositor DCC
$R_{free}$ test set	1241 reflections (5.07%)	DCC
Wilson B-factor (Å <sup>2</sup> )	37.4	Xtriage
Anisotropy	0.316	Xtriage
Bulk solvent $k_{sol}$ (e/Å <sup>3</sup> ), $B_{sol}$ (Å <sup>2</sup> )	0.33 , 57.6	EDS
Estimated twinning fraction	No twinning to report.	Xtriage
L-test for twinning	$\langle  L  \rangle = 0.41$ , $\langle L^2 \rangle = 0.23$	Xtriage
Outliers	0 of 26448 reflections	Xtriage
$F_o, F_c$ correlation	0.92	EDS
Total number of atoms	3302	wwPDB-VP
Average B, all atoms (Å <sup>2</sup> )	47.0	wwPDB-VP

Xtriage's analysis on translational NCS is as follows: *The largest off-origin peak in the Patterson function is 4.69% of the height of the origin peak. No significant pseudotranslation is detected.*

<sup>1</sup>Intensities estimated from amplitudes.

## 5 Model quality

### 5.1 Standard geometry

Bond lengths and bond angles in the following residue types are not validated in this section: NA, MG, MN, PPV, DCP

The Z score for a bond length (or angle) is the number of standard deviations the observed value is removed from the expected value. A bond length (or angle) with  $|Z| > 5$  is considered an outlier worth inspection. RMSZ is the root-mean-square of all Z scores of the bond lengths (or angles).

Mol	Chain	Bond lengths		Bond angles	
		RMSZ	$\# Z  > 5$	RMSZ	$\# Z  > 5$
1	T	0.37	0/252	0.86	0/388
2	P	0.47	0/175	0.73	0/267
3	D	0.97	1/92 (1.1%)	0.80	0/138
4	A	0.35	0/2619	0.58	1/3546 (0.0%)
All	All	0.39	1/3138 (0.0%)	0.63	1/4339 (0.0%)

All (1) bond length outliers are listed below:

Mol	Chain	Res	Type	Atoms	Z	Observed(Å)	Ideal(Å)
3	D	1	DG	OP3-P	-7.40	1.52	1.61

All (1) bond angle outliers are listed below:

Mol	Chain	Res	Type	Atoms	Z	Observed(°)	Ideal(°)
4	A	317	LEU	CA-C-N	-6.06	103.88	117.20

There are no chirality outliers.

There are no planarity outliers.

### 5.2 Close contacts

In the following table, the Non-H and H(model) columns list the number of non-hydrogen atoms and hydrogen atoms in the chain respectively. The H(added) column lists the number of hydrogens added by MolProbity. The Clashes column lists the number of clashes within the asymmetric unit, and the number in parentheses is this value normalized per 1000 atoms of the molecule in the chain. The Symm-Clashes column gives symmetry related clashes, in the same way as for the Clashes column.



Mol	Chain	Non-H	H(model)	H(added)	Clashes	Symm-Clashes
1	T	225	0	125	3	0
2	P	157	0	90	2	0
3	D	83	0	45	7	0
4	A	2565	0	2471	141	0
5	A	1	0	0	0	0
6	A	2	0	0	0	0
7	A	2	0	0	0	0
8	A	28	0	11	0	0
9	A	9	0	0	0	0
10	A	166	0	0	15	0
10	D	6	0	0	1	0
10	P	26	0	0	0	0
10	T	32	0	0	2	0
All	All	3302	0	2742	144	0

Clashscore is defined as the number of clashes calculated for the entry per 1000 atoms (including hydrogens) of the entry. The overall clashscore for this entry is 25.

The worst 5 of 144 close contacts within the same asymmetric unit are listed below.

Atom-1	Atom-2	Distance(Å)	Clash(Å)
4:A:511[B]:HIS:HE1	10:A:1565:HOH:O	1.16	1.22
4:A:314:ILE:HG22	4:A:318:GLU:OE1	1.53	1.09
3:D:1:DG:H1'	4:A:278:GLY:HA3	1.53	0.88
4:A:314:ILE:O	4:A:318:GLU:HB3	1.80	0.82
4:A:539:ASN:HD21	4:A:543:ALA:HB3	1.45	0.79

There are no symmetry-related clashes.

## 5.3 Torsion angles

### 5.3.1 Protein backbone ⓘ

In the following table, the Percentiles column shows the percent Ramachandran outliers of the chain as a percentile score with respect to all X-ray entries followed by that with respect to entries of similar resolution. The Analysed column shows the number of residues for which the backbone conformation was analysed, and the total number of residues.

Mol	Chain	Analysed	Favoured	Allowed	Outliers	Percentiles
4	A	330/335 (98%)	300 (91%)	29 (9%)	1 (0%)	50 49

All (1) Ramachandran outliers are listed below:

Mol	Chain	Res	Type
4	A	547	PRO

### 5.3.2 Protein sidechains ⓘ

In the following table, the Percentiles column shows the percent sidechain outliers of the chain as a percentile score with respect to all X-ray entries followed by that with respect to entries of similar resolution. The Analysed column shows the number of residues for which the sidechain conformation was analysed, and the total number of residues.

Mol	Chain	Analysed	Rotameric	Outliers	Percentiles
4	A	263/280 (94%)	260 (99%)	3 (1%)	84 88

All (3) residues with a non-rotameric sidechain are listed below:

Mol	Chain	Res	Type
4	A	252	HIS
4	A	354	GLN
4	A	506	PHE

Some sidechains can be flipped to improve hydrogen bonding and reduce clashes. All (3) such sidechains are listed below:

Mol	Chain	Res	Type
4	A	252	HIS
4	A	253	ASN
4	A	464	GLN

### 5.3.3 RNA ⓘ

There are no RNA chains in this entry.

## 5.4 Non-standard residues in protein, DNA, RNA chains ⓘ

There are no non-standard protein/DNA/RNA residues in this entry.

## 5.5 Carbohydrates ⓘ

There are no carbohydrates in this entry.

## 5.6 Ligand geometry ⓘ

Of 7 ligands modelled in this entry, 5 are monoatomic - leaving 2 for Mogul analysis.

In the following table, the Counts columns list the number of bonds (or angles) for which Mogul statistics could be retrieved, the number of bonds (or angles) that are observed in the model and the number of bonds (or angles) that are defined in the chemical component dictionary. The Link column lists molecule types, if any, to which the group is linked. The Z score for a bond length (or angle) is the number of standard deviations the observed value is removed from the expected value. A bond length (or angle) with  $|Z| > 2$  is considered an outlier worth inspection. RMSZ is the root-mean-square of all Z scores of the bond lengths (or angles).

Mol	Type	Chain	Res	Link	Bond lengths			Bond angles		
					Counts	RMSZ	# Z  > 2	Counts	RMSZ	# Z  > 2
8	DCP	A	1438[B]	5,6	29,29,29	2.30	5 (17%)	42,45,45	1.12	4 (9%)
9	PPV	A	1439[A]	7	8,8,8	3.19	2 (25%)	13,13,13	1.41	3 (23%)

In the following table, the Chirals column lists the number of chiral outliers, the number of chiral centers analysed, the number of these observed in the model and the number defined in the chemical component dictionary. Similar counts are reported in the Torsion and Rings columns. '-' means no outliers of that kind were identified.

Mol	Type	Chain	Res	Link	Chirals	Torsions	Rings
8	DCP	A	1438[B]	5,6	-	0/19/34/34	0/2/2/2
9	PPV	A	1439[A]	7	-	0/6/6/6	0/0/0/0

The worst 5 of 7 bond length outliers are listed below:

Mol	Chain	Res	Type	Atoms	Z	Observed(Å)	Ideal(Å)
9	A	1439[A]	PPV	P1-OPP	-6.09	1.49	1.60
8	A	1438[B]	DCP	PG-O3B	-6.00	1.49	1.60
9	A	1439[A]	PPV	P2-OPP	-5.83	1.50	1.60
8	A	1438[B]	DCP	PB-O3B	-5.73	1.49	1.59
8	A	1438[B]	DCP	PA-O3A	-5.52	1.49	1.59

The worst 5 of 7 bond angle outliers are listed below:

Mol	Chain	Res	Type	Atoms	Z	Observed(°)	Ideal(°)
8	A	1438[B]	DCP	PB-O3B-PG	-3.50	121.42	131.68
8	A	1438[B]	DCP	C2-N3-C4	3.15	120.13	115.57
9	A	1439[A]	PPV	P2-OPP-P1	-2.83	123.37	131.68
8	A	1438[B]	DCP	O2G-PG-O1G	2.77	119.48	110.44
9	A	1439[A]	PPV	O12-P2-O22	2.74	119.41	110.44

There are no chirality outliers.

There are no torsion outliers.

There are no ring outliers.

## 5.7 Other polymers ⓘ

There are no such residues in this entry.

## 5.8 Polymer linkage issues

There are no chain breaks in this entry.

## 6 Fit of model and data ⓘ

### 6.1 Protein, DNA and RNA chains ⓘ

In the following table, the column labelled ‘#RSRZ> 2’ contains the number (and percentage) of RSRZ outliers, followed by percent RSRZ outliers for the chain as percentile scores relative to all X-ray entries and entries of similar resolution. The OWAB column contains the minimum, median, 95<sup>th</sup> percentile and maximum values of the occupancy-weighted average B-factor per residue. The column labelled ‘Q< 0.9’ lists the number of (and percentage) of residues with an average occupancy less than 0.9.

Mol	Chain	Analysed	<RSRZ>	#RSRZ>2		OWAB(Å²)	Q<0.9	
1	T	11/11 (100%)	-0.15	0	100	100	26, 31, 42, 48	0
2	P	7/7 (100%)	-0.06	0	100	100	19, 23, 26, 31	1 (14%)
3	D	4/4 (100%)	-0.10	0	100	100	45, 47, 51, 54	0
4	A	324/335 (96%)	0.70	32 (9%)	8	8	15, 47, 96, 110	1 (0%)
All	All	346/357 (96%)	0.65	32 (9%)	9	10	15, 46, 94, 110	2 (0%)

The worst 5 of 32 RSRZ outliers are listed below:

Mol	Chain	Res	Type	RSRZ
4	A	316	ILE	5.9
4	A	286	LEU	4.9
4	A	295	SER	4.8
4	A	545	VAL	4.4
4	A	253	ASN	4.3

### 6.2 Non-standard residues in protein, DNA, RNA chains ⓘ

There are no non-standard protein/DNA/RNA residues in this entry.

### 6.3 Carbohydrates ⓘ

There are no carbohydrates in this entry.

### 6.4 Ligands ⓘ

In the following table, the Atoms column lists the number of modelled atoms in the group and the number defined in the chemical component dictionary. LLDF column lists the quality of electron density of the group with respect to its neighbouring residues in protein, DNA or RNA chains. The B-factors column lists the minimum, median, 95<sup>th</sup> percentile and maximum values of B factors

of atoms in the group. The column labelled 'Q< 0.9' lists the number of atoms with occupancy less than 0.9.

Mol	Type	Chain	Res	Atoms	RSR	LLDF	B-factors( $\text{\AA}^2$ )	Q<0.9
8	DCP	A	1438[B]	28/28	0.14	-0.88	26,29,30,31	28
9	PPV	A	1439[A]	9/9	0.13	-1.21	49,53,54,54	9
5	MG	A	1294[B]	1/1	0.13	-1.96	38,38,38,38	1
7	MN	A	1297[A]	1/1	0.10	-2.02	42,42,42,42	1
6	NA	A	1295[B]	1/1	0.10	-2.02	30,30,30,30	1
7	MN	A	1296[A]	1/1	0.11	-2.51	45,45,45,45	1
6	NA	A	1	1/1	0.04	-3.82	15,15,15,15	0

## 6.5 Other polymers ⓘ

There are no such residues in this entry.