



# Full wwPDB X-ray Structure Validation Report ⓘ

Feb 28, 2014 – 01:46 AM GMT

PDB ID : 1PG4  
Title : Acetyl CoA Synthetase, Salmonella enterica  
Authors : Gulick, A.M.; Starai, V.J.; Horswill, A.R.; Homick, K.M.; Escalante-Semerena, J.C.  
Deposited on : 2003-05-27  
Resolution : 1.75 Å(reported)

This is a full wwPDB validation report for a publicly released PDB entry.  
We welcome your comments at [validation@mail.wwpdb.org](mailto:validation@mail.wwpdb.org)  
A user guide is available at <http://wwpdb.org/ValidationPDFNotes.html>

---

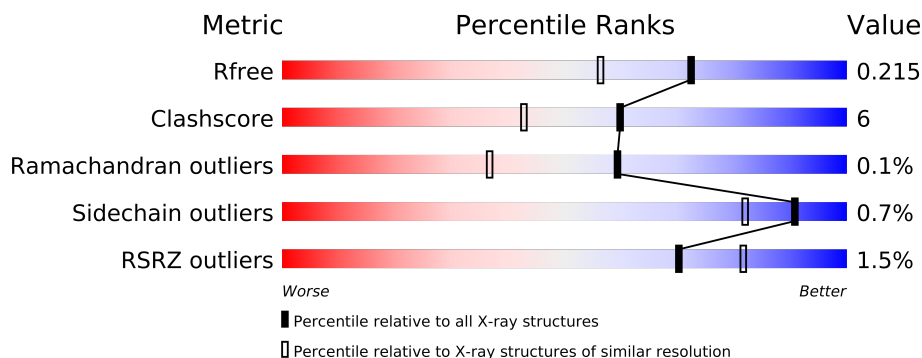
The following versions of software and data (see [references](#)) were used in the production of this report:

MolProbity : 4.02b-467  
Mogul : 1.15 2013  
Xtriage (Phenix) : dev-1323  
EDS : stable22639  
Percentile statistics : 21963  
Refmac : 5.8.0049  
CCP4 : 6.3.0 (Settle)  
Ideal geometry (proteins) : Engh & Huber (2001)  
Ideal geometry (DNA, RNA) : Parkinson et. al. (1996)  
Validation Pipeline (wwPDB-VP) : stable22683

# 1 Overall quality at a glance

The reported resolution of this entry is 1.75 Å.

Percentile scores (ranging between 0-100) for global validation metrics of the entry are shown in the following graphic. The table shows the number of entries on which the scores are based.



Metric	Whole archive (#Entries)	Similar resolution (#Entries, resolution range(Å))
$R_{free}$	66092	1134 (1.76-1.76)
Clashscore	79885	1304 (1.76-1.76)
Ramachandran outliers	78287	1288 (1.76-1.76)
Sidechain outliers	78261	1288 (1.76-1.76)
RSRZ outliers	66119	1135 (1.76-1.76)

The table below summarises the geometric issues observed across the polymeric chains and their fit to the electron density. The red, orange, yellow and green segments on the lower bar indicate the fraction of residues that contain outliers for  $\geq 3$ , 2, 1 and 0 types of geometric quality criteria. The upper red bar (where present) indicates the fraction of residues that have poor fit to the electron density.

Mol	Chain	Length	Quality of chain
1	A	652	
1	B	652	

## 2 Entry composition

There are 7 unique types of molecules in this entry. The entry contains 10837 atoms, of which 0 are hydrogen and 0 are deuterium.

In the tables below, the ZeroOcc column contains the number of atoms modelled with zero occupancy, the AltConf column contains the number of residues with at least one atom in alternate conformation and the Trace column contains the number of residues modelled with at most 2 atoms.

- Molecule 1 is a protein called acetyl-CoA synthetase.

Mol	Chain	Residues	Atoms					ZeroOcc	AltConf	Trace
1	A	633	Total	C	N	O	S	0	0	0
			4893	3112	843	920	18			
1	B	639	Total	C	N	O	S	0	0	0
			4923	3132	852	920	19			

There are 2 discrepancies between the modelled and reference sequences:

Chain	Residue	Modelled	Actual	Comment	Reference
A	174	CYS	ARG	ENGINEERED	UNP Q8ZKF6
B	174	CYS	ARG	ENGINEERED	UNP Q8ZKF6

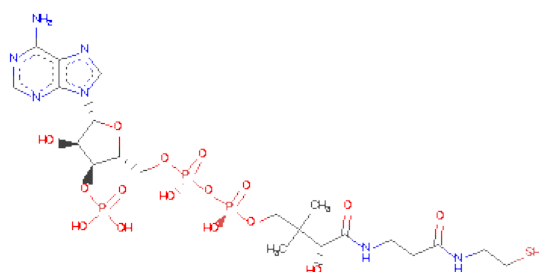
- Molecule 2 is CHLORIDE ION (three-letter code: CL) (formula: Cl).

Mol	Chain	Residues	Atoms		ZeroOcc	AltConf
2	B	1	Total	Cl	0	0
			1	1		
2	A	1	Total	Cl	0	0
			1	1		

- Molecule 3 is MAGNESIUM ION (three-letter code: MG) (formula: Mg).

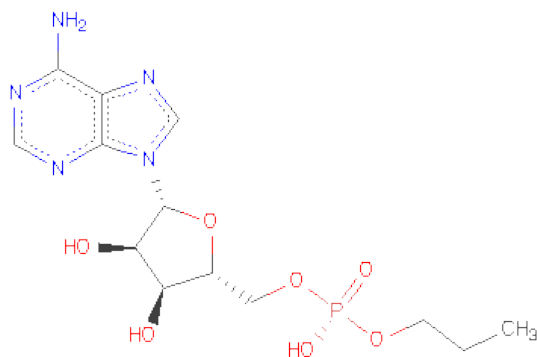
Mol	Chain	Residues	Atoms		ZeroOcc	AltConf
3	B	1	Total	Mg	0	0
			1	1		
3	A	1	Total	Mg	0	0
			1	1		

- Molecule 4 is COENZYME A (three-letter code: COA) (formula: C<sub>21</sub>H<sub>36</sub>N<sub>7</sub>O<sub>16</sub>P<sub>3</sub>S).



Mol	Chain	Residues	Atoms						ZeroOcc	AltConf
4	A	1	Total	C	N	O	P	S	0	0
			48	21	7	16	3	1		
4	B	1	Total	C	N	O	P	S	0	0
			48	21	7	16	3	1		

- Molecule 5 is ADENOSINE-5'-MONOPHOSPHATE-PROPYLESTER (three-letter code: PRX) (formula:  $C_{13}H_{20}N_5O_7P$ ).



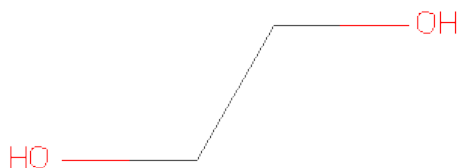
Mol	Chain	Residues	Atoms					ZeroOcc	AltConf
5	A	1	Total	C	N	O	P	0	0
			26	13	5	7	1		

*Continued on next page...*

Continued from previous page...

Mol	Chain	Residues	Atoms					ZeroOcc	AltConf
5	B	1	Total	C	N	O	P	0	0
			26	13	5	7	1		

- Molecule 6 is 1,2-ETHANEDIOL (three-letter code: EDO) (formula: C<sub>2</sub>H<sub>6</sub>O<sub>2</sub>).



Mol	Chain	Residues	Atoms			ZeroOcc	AltConf
6	B	1	Total	C	O	0	0
			4	2	2		
6	A	1	Total	C	O	0	0
			4	2	2		
6	A	1	Total	C	O	0	0
			4	2	2		
6	A	1	Total	C	O	0	0
			4	2	2		
6	B	1	Total	C	O	0	0
			4	2	2		

- Molecule 7 is water.

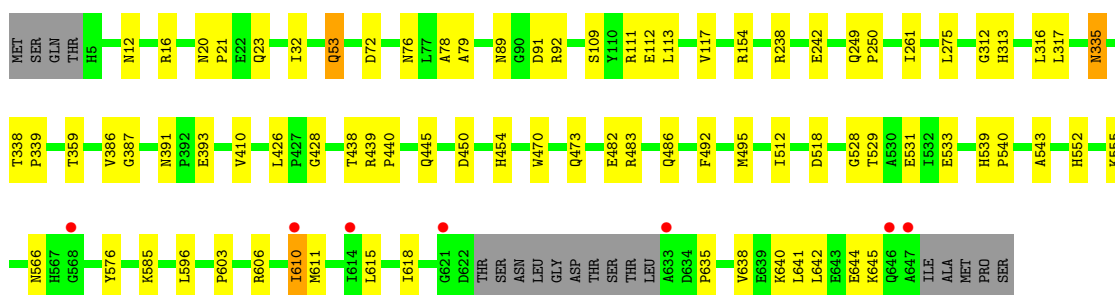
Mol	Chain	Residues	Atoms		ZeroOcc	AltConf
7	A	473	Total	O	0	0
			473	473		
7	B	376	Total	O	0	0
			376	376		

### 3 Residue-property plots

These plots are drawn for all protein, RNA and DNA chains in the entry. The first graphic for a chain summarises the proportions of errors displayed in the second graphic. The second graphic shows the sequence view annotated by issues in geometry and electron density. Residues are color-coded according to the number of geometric quality criteria for which they contain at least one outlier: green = 0, yellow = 1, orange = 2 and red = 3 or more. A red dot above a residue indicates a poor fit to the electron density ( $RSRZ > 2$ ). Stretches of 2 or more consecutive residues without any outlier are shown as a green connector. Residues present in the sample, but not in the model, are shown in grey.

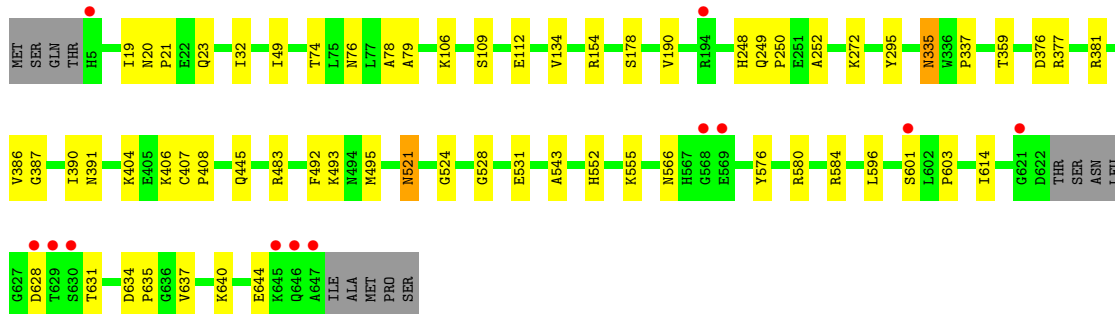
#### • Molecule 1: acetyl-CoA synthetase

Chain A: 



#### • Molecule 1: acetyl-CoA synthetase

Chain B: 



## 4 Data and refinement statistics

Property	Value	Source
Space group	P 1 21 1	Depositor
Cell constants a, b, c, $\alpha$ , $\beta$ , $\gamma$	59.99Å 143.02Å 71.73Å 90.00° 91.32° 90.00°	Depositor
Resolution (Å)	29.80 – 1.75 29.80 – 1.74	Depositor EDS
% Data completeness (in resolution range)	93.7 (29.80-1.75) 93.2 (29.80-1.74)	Depositor EDS
$R_{merge}$	(Not available)	Depositor
$R_{sym}$	0.07	Depositor
$\langle I/\sigma(I) \rangle$ <sup>1</sup>	1.55 (at 1.75Å)	Xtriage
Refinement program	CNS 1.0	Depositor
R, $R_{free}$	0.184 , 0.211 0.191 , 0.215	Depositor DCC
$R_{free}$ test set	5695 reflections (5.01%)	DCC
Wilson B-factor (Å <sup>2</sup> )	18.5	Xtriage
Anisotropy	0.222	Xtriage
Bulk solvent $k_{sol}$ (e/Å <sup>3</sup> ), $B_{sol}$ (Å <sup>2</sup> )	0.37 , 36.7	EDS
Estimated twinning fraction	0.054 for h,-k,-l	Xtriage
L-test for twinning	$\langle  L  \rangle = 0.48$ , $\langle L^2 \rangle = 0.31$	Xtriage
Outliers	0 of 114107 reflections	Xtriage
$F_o, F_c$ correlation	0.96	EDS
Total number of atoms	10837	wwPDB-VP
Average B, all atoms (Å <sup>2</sup> )	21.0	wwPDB-VP

Xtriage's analysis on translational NCS is as follows: *The largest off-origin peak in the Patterson function is 3.86% of the height of the origin peak. No significant pseudotranslation is detected.*

<sup>1</sup>Intensities estimated from amplitudes.

## 5 Model quality i

### 5.1 Standard geometry i

Bond lengths and bond angles in the following residue types are not validated in this section: COA, MG, EDO, PRX, CL

The Z score for a bond length (or angle) is the number of standard deviations the observed value is removed from the expected value. A bond length (or angle) with  $|Z| > 5$  is considered an outlier worth inspection. RMSZ is the root-mean-square of all Z scores of the bond lengths (or angles).

Mol	Chain	Bond lengths		Bond angles	
		RMSZ	# Z  >5	RMSZ	# Z  >5
1	A	0.31	0/5024	0.60	2/6856 (0.0%)
1	B	0.30	0/5053	0.59	1/6892 (0.0%)
All	All	0.30	0/10077	0.60	3/13748 (0.0%)

There are no bond length outliers.

All (3) bond angle outliers are listed below:

Mol	Chain	Res	Type	Atoms	Z	Observed(°)	Ideal(°)
1	A	426	LEU	N-CA-C	-5.62	95.82	111.00
1	A	635	PRO	N-CA-CB	5.32	109.68	103.30
1	B	635	PRO	N-CA-CB	5.22	109.56	103.30

There are no chirality outliers.

There are no planarity outliers.

### 5.2 Close contacts i

In the following table, the Non-H and H(model) columns list the number of non-hydrogen atoms and hydrogen atoms in the chain respectively. The H(added) column lists the number of hydrogens added by MolProbity. The Clashes column lists the number of clashes within the asymmetric unit, and the number in parentheses is this value normalized per 1000 atoms of the molecule in the chain. The Symm-Clashes column gives symmetry related clashes, in the same way as for the Clashes column.

Mol	Chain	Non-H	H(model)	H(added)	Clashes	Symm-Clashes
1	A	4893	0	4708	66	0
1	B	4923	0	4758	55	0
2	A	1	0	0	0	0
2	B	1	0	0	0	0

*Continued on next page...*



*Continued from previous page...*

Mol	Chain	Non-H	H(model)	H(added)	Clashes	Symm-Clashes
3	A	1	0	0	0	0
3	B	1	0	0	0	0
4	A	48	0	32	1	0
4	B	48	0	32	1	0
5	A	26	0	19	0	0
5	B	26	0	19	0	0
6	A	12	0	18	0	0
6	B	8	0	12	1	0
7	A	473	0	0	4	0
7	B	376	0	0	7	0
All	All	10837	0	9598	118	0

Clashscore is defined as the number of clashes calculated for the entry per 1000 atoms (including hydrogens) of the entry. The overall clashscore for this entry is 6.

All (118) close contacts within the same asymmetric unit are listed below.

Atom-1	Atom-2	Distance(Å)	Clash(Å)
1:B:628:ASP:O	1:B:631:THR:HG22	1.78	0.83
1:B:493:LYS:HE2	7:B:2100:HOH:O	1.78	0.83
1:A:486:GLN:HE22	1:B:74:THR:HG21	1.48	0.77
1:B:154:ARG:HE	1:B:248:HIS:HD2	1.33	0.76
1:A:552:HIS:CD2	1:A:555:LYS:HG2	2.21	0.75
1:B:20:ASN:H	1:B:23:GLN:HE21	1.35	0.73
1:B:552:HIS:HD2	1:B:555:LYS:H	1.33	0.73
1:B:493:LYS:HE3	7:B:2172:HOH:O	1.91	0.69
1:A:610:ILE:HD13	1:A:611:MET:N	2.08	0.68
1:B:20:ASN:H	1:B:23:GLN:NE2	1.91	0.68
1:A:492:PHE:HB3	1:A:495:MET:CE	2.25	0.67
1:B:335:ASN:H	1:B:335:ASN:HD22	1.45	0.65
1:A:154:ARG:NH2	1:A:250:PRO:HG3	2.11	0.65
1:A:76:ASN:HD22	1:A:79:ALA:H	1.46	0.64
1:A:238:ARG:O	1:A:242:GLU:HG3	1.99	0.62
1:A:640:LYS:O	1:A:644:GLU:HG3	2.00	0.61
1:A:512:ILE:HD12	1:A:512:ILE:N	2.15	0.61
1:B:76:ASN:HD22	1:B:79:ALA:H	1.49	0.60
1:B:154:ARG:NH2	1:B:250:PRO:HG3	2.16	0.60
1:A:552:HIS:HD2	1:A:555:LYS:H	1.51	0.59
1:A:386:VAL:HG22	1:A:387:GLY:N	2.17	0.59
1:B:154:ARG:HE	1:B:248:HIS:CD2	2.18	0.58
1:B:337:PRO:HG2	7:B:2095:HOH:O	2.04	0.57
1:A:529:THR:O	1:A:533:GLU:HG3	2.04	0.57
1:B:603:PRO:HB2	1:B:614:ILE:HD11	1.86	0.57

*Continued on next page...*

*Continued from previous page...*

Atom-1	Atom-2	Distance(Å)	Clash(Å)
1:A:543:ALA:HB2	1:A:566:ASN:OD1	2.06	0.56
1:B:154:ARG:NE	1:B:248:HIS:HD2	2.03	0.56
1:A:359:THR:HG22	4:A:990:COA:H143	1.88	0.56
1:A:261:ILE:HD11	1:A:275:LEU:HD12	1.88	0.55
1:B:552:HIS:CD2	1:B:555:LYS:H	2.19	0.55
1:B:386:VAL:HG22	1:B:387:GLY:N	2.22	0.55
1:A:529:THR:HG21	7:A:2086:HOH:O	2.07	0.54
1:A:313:HIS:HE1	7:A:1809:HOH:O	1.91	0.54
1:A:492:PHE:HB3	1:A:495:MET:HE3	1.89	0.53
1:B:640:LYS:O	1:B:644:GLU:HG3	2.09	0.53
1:A:450:ASP:OD2	1:A:454:HIS:HB2	2.09	0.53
1:B:381:ARG:HD2	7:B:2019:HOH:O	2.08	0.52
1:A:316:LEU:HD12	1:A:317:LEU:HG	1.90	0.52
1:B:335:ASN:HD22	1:B:335:ASN:N	2.05	0.52
1:A:603:PRO:HD3	1:A:641:LEU:HD11	1.91	0.52
1:A:32:ILE:HD12	1:A:445:GLN:CG	2.39	0.52
1:B:335:ASN:H	1:B:335:ASN:ND2	2.09	0.51
1:A:312:GLY:O	1:A:316:LEU:HB3	2.10	0.51
1:A:492:PHE:HB3	1:A:495:MET:HE2	1.91	0.51
1:A:335:ASN:HD22	1:A:335:ASN:H	1.58	0.51
1:A:249:GLN:HB3	7:A:2240:HOH:O	2.11	0.51
1:A:89:ASN:ND2	1:A:92:ARG:CZ	2.75	0.51
1:B:528:GLY:O	1:B:531:GLU:HG2	2.12	0.50
1:A:154:ARG:CZ	1:A:250:PRO:HG3	2.41	0.50
1:B:32:ILE:HD12	1:B:445:GLN:HG2	1.92	0.50
1:B:391:ASN:ND2	7:B:2096:HOH:O	2.45	0.49
1:A:606:ARG:HD2	7:B:2068:HOH:O	2.12	0.49
1:B:32:ILE:HD12	1:B:445:GLN:CG	2.42	0.49
1:A:12:ASN:O	1:A:16:ARG:HG2	2.13	0.49
1:A:109:SER:OG	1:A:112:GLU:HG3	2.13	0.48
1:A:610:ILE:HD13	1:A:610:ILE:C	2.33	0.48
1:A:386:VAL:CG2	1:A:387:GLY:N	2.76	0.48
1:A:576:TYR:CE1	1:A:596:LEU:HB2	2.49	0.48
1:A:338:THR:HB	1:A:339:PRO:HD2	1.94	0.48
1:A:645:LYS:HD3	1:A:645:LYS:O	2.15	0.47
1:B:134:VAL:HG11	1:B:178:SER:HB2	1.97	0.47
1:B:19:ILE:HA	1:B:23:GLN:NE2	2.30	0.47
1:A:76:ASN:HD21	1:A:78:ALA:HB3	1.80	0.47
1:A:606:ARG:HH11	1:A:606:ARG:HG3	1.79	0.47
1:A:53:GLN:H	1:A:72:ASP:CG	2.18	0.47
1:B:272:LYS:HE3	1:B:483:ARG:CD	2.45	0.46
1:A:618:ILE:HG22	1:A:645:LYS:HG3	1.97	0.46

*Continued on next page...*

*Continued from previous page...*

Atom-1	Atom-2	Distance(Å)	Clash(Å)
1:B:154:ARG:CZ	1:B:250:PRO:HG3	2.46	0.46
1:A:20:ASN:OD1	1:A:23:GLN:HG3	2.15	0.46
1:B:20:ASN:HB2	1:B:21:PRO:HD2	1.98	0.46
1:B:634:ASP:O	1:B:637:VAL:HG22	2.15	0.45
1:A:53:GLN:HB2	1:A:53:GLN:HE21	1.60	0.45
1:A:391:ASN:HD21	1:A:393:GLU:HB3	1.82	0.45
1:A:482:GLU:OE1	1:B:49:ILE:O	2.34	0.45
1:B:335:ASN:ND2	1:B:335:ASN:N	2.65	0.45
1:B:190:VAL:HG13	6:B:1804:EDO:H12	1.99	0.44
1:A:585:LYS:HE2	7:A:2036:HOH:O	2.16	0.44
1:B:390:ILE:HG23	1:B:390:ILE:O	2.17	0.44
1:B:20:ASN:HB2	1:B:21:PRO:CD	2.47	0.44
1:B:49:ILE:HD12	1:B:252:ALA:HA	2.00	0.44
1:B:386:VAL:CG2	1:B:387:GLY:N	2.81	0.44
1:A:610:ILE:HD13	1:A:611:MET:C	2.38	0.44
1:B:359:THR:HG22	4:B:991:COA:H143	2.00	0.44
1:A:316:LEU:C	1:A:316:LEU:HD13	2.38	0.44
1:A:486:GLN:NE2	1:B:74:THR:HG21	2.26	0.43
1:A:335:ASN:ND2	1:A:335:ASN:H	2.15	0.43
1:B:249:GLN:HA	1:B:250:PRO:HD3	1.91	0.43
1:A:439:ARG:HB3	1:A:440:PRO:HD2	2.01	0.43
1:B:584:ARG:HG2	1:B:584:ARG:HH11	1.83	0.43
1:A:20:ASN:HB2	1:A:21:PRO:CD	2.49	0.43
1:A:410:VAL:HG23	1:A:410:VAL:O	2.18	0.42
1:B:404:LYS:O	1:B:406:LYS:HG3	2.19	0.42
1:B:109:SER:OG	1:B:112:GLU:HG3	2.20	0.42
1:A:470:TRP:CE2	1:A:473:GLN:HB2	2.54	0.42
1:B:521:ASN:HD21	1:B:524:GLY:HA2	1.85	0.42
1:B:376:ASP:O	1:B:377:ARG:HB2	2.19	0.42
1:B:576:TYR:CE1	1:B:596:LEU:HB2	2.55	0.42
1:A:638:VAL:O	1:A:642:LEU:HG	2.19	0.42
1:B:76:ASN:HD21	1:B:78:ALA:HB3	1.84	0.42
1:A:91:ASP:OD1	1:A:111:ARG:NH1	2.51	0.41
1:A:539:HIS:HA	1:A:540:PRO:HD3	1.91	0.41
1:A:512:ILE:CD1	1:A:512:ILE:N	2.82	0.41
1:A:316:LEU:HD13	1:A:316:LEU:O	2.20	0.41
1:A:552:HIS:CD2	1:A:555:LYS:H	2.34	0.41
1:B:543:ALA:HB2	1:B:566:ASN:OD1	2.20	0.41
1:A:20:ASN:HB2	1:A:21:PRO:HD2	2.03	0.41
1:B:576:TYR:O	1:B:580:ARG:HG3	2.20	0.41
1:A:528:GLY:O	1:A:531:GLU:HG2	2.21	0.41
1:B:295:TYR:HE1	7:B:2112:HOH:O	2.03	0.41

*Continued on next page...*

*Continued from previous page...*

Atom-1	Atom-2	Distance(Å)	Clash(Å)
1:A:32:ILE:HD12	1:A:445:GLN:HG3	2.02	0.41
1:A:610:ILE:HD11	1:A:615:LEU:CD1	2.52	0.41
1:B:272:LYS:HE3	1:B:483:ARG:HD3	2.02	0.41
1:A:518:ASP:HB3	1:A:529:THR:OG1	2.21	0.40
1:B:407:CYS:HA	1:B:408:PRO:HD3	1.98	0.40
1:B:492:PHE:HB3	1:B:495:MET:CE	2.52	0.40
1:B:601:SER:O	1:B:637:VAL:HB	2.22	0.40
1:A:21:PRO:HD3	1:A:428:GLY:O	2.21	0.40
1:A:113:LEU:O	1:A:117:VAL:HG23	2.21	0.40

There are no symmetry-related clashes.

## 5.3 Torsion angles

### 5.3.1 Protein backbone ⓘ

In the following table, the Percentiles column shows the percent Ramachandran outliers of the chain as a percentile score with respect to all X-ray entries followed by that with respect to entries of similar resolution. The Analysed column shows the number of residues for which the backbone conformation was analysed, and the total number of residues.

Mol	Chain	Analysed	Favoured	Allowed	Outliers	Percentiles	
1	A	629/652 (96%)	607 (96%)	21 (3%)	1 (0%)	56	34
1	B	635/652 (97%)	613 (96%)	22 (4%)	0	100	100
All	All	1264/1304 (97%)	1220 (96%)	43 (3%)	1 (0%)	59	37

All (1) Ramachandran outliers are listed below:

Mol	Chain	Res	Type
1	A	438	THR

### 5.3.2 Protein sidechains ⓘ

In the following table, the Percentiles column shows the percent sidechain outliers of the chain as a percentile score with respect to all X-ray entries followed by that with respect to entries of similar resolution. The Analysed column shows the number of residues for which the sidechain conformation was analysed, and the total number of residues.

*Continued on next page...*

*Continued from previous page...*

Mol	Chain	Analysed	Rotameric	Outliers	Percentiles	
1	A	506/538 (94%)	502 (99%)	4 (1%)	89	80
1	B	508/538 (94%)	505 (99%)	3 (1%)	92	85
All	All	1014/1076 (94%)	1007 (99%)	7 (1%)	91	82

All (7) residues with a non-rotameric sidechain are listed below:

Mol	Chain	Res	Type
1	A	53	GLN
1	A	335	ASN
1	A	483	ARG
1	A	610	ILE
1	B	106	LYS
1	B	335	ASN
1	B	521	ASN

Some sidechains can be flipped to improve hydrogen bonding and reduce clashes. All (25) such sidechains are listed below:

Mol	Chain	Res	Type
1	A	42	GLN
1	A	53	GLN
1	A	76	ASN
1	A	89	ASN
1	A	249	GLN
1	A	313	HIS
1	A	335	ASN
1	A	344	GLN
1	A	456	GLN
1	A	486	GLN
1	A	552	HIS
1	B	23	GLN
1	B	30	GLN
1	B	42	GLN
1	B	64	ASN
1	B	76	ASN
1	B	89	ASN
1	B	248	HIS
1	B	249	GLN
1	B	335	ASN

*Continued on next page...*

*Continued from previous page...*

Mol	Chain	Res	Type
1	B	344	GLN
1	B	350	GLN
1	B	456	GLN
1	B	521	ASN
1	B	552	HIS

### 5.3.3 RNA ⓘ

There are no RNA chains in this entry.

### 5.4 Non-standard residues in protein, DNA, RNA chains ⓘ

There are no non-standard protein/DNA/RNA residues in this entry.

### 5.5 Carbohydrates ⓘ

There are no carbohydrates in this entry.

### 5.6 Ligand geometry ⓘ

Of 13 ligands modelled in this entry, 4 are monoatomic - leaving 9 for Mogul analysis.

In the following table, the Counts columns list the number of bonds (or angles) for which Mogul statistics could be retrieved, the number of bonds (or angles) that are observed in the model and the number of bonds (or angles) that are defined in the chemical component dictionary. The Link column lists molecule types, if any, to which the group is linked. The Z score for a bond length (or angle) is the number of standard deviations the observed value is removed from the expected value. A bond length (or angle) with  $|Z| > 2$  is considered an outlier worth inspection. RMSZ is the root-mean-square of all Z scores of the bond lengths (or angles).

Mol	Type	Chain	Res	Link	Bond lengths			Bond angles		
					Counts	RMSZ	$\# Z  > 2$	Counts	RMSZ	$\# Z  > 2$
6	EDO	A	1801	-	3,3,3	0.58	0	2,2,2	0.39	0
6	EDO	A	1802	-	3,3,3	0.57	0	2,2,2	0.43	0
6	EDO	A	1803	-	3,3,3	0.62	0	2,2,2	0.37	0
4	COA	A	990	-	50,50,50	1.32	6 (12%)	75,75,75	1.52	10 (13%)
5	PRX	A	999	-	28,28,28	1.93	6 (21%)	41,41,41	1.64	7 (17%)
6	EDO	B	1800	-	3,3,3	0.61	0	2,2,2	0.45	0
6	EDO	B	1804	-	3,3,3	0.56	0	2,2,2	0.45	0
4	COA	B	991	-	50,50,50	1.33	6 (12%)	75,75,75	1.59	11 (14%)

Mol	Type	Chain	Res	Link	Bond lengths			Bond angles		
					Counts	RMSZ	# Z  > 2	Counts	RMSZ	# Z  > 2
5	PRX	B	998	-	28,28,28	1.94	6 (21%)	41,41,41	1.65	7 (17%)

In the following table, the Chirals column lists the number of chiral outliers, the number of chiral centers analysed, the number of these observed in the model and the number defined in the chemical component dictionary. Similar counts are reported in the Torsion and Rings columns. '-' means no outliers of that kind were identified.

Mol	Type	Chain	Res	Link	Chirals	Torsions	Rings
6	EDO	A	1801	-	-	0/1/1/1	0/0/0/0
6	EDO	A	1802	-	-	0/1/1/1	0/0/0/0
6	EDO	A	1803	-	-	0/1/1/1	0/0/0/0
4	COA	A	990	-	-	0/48/64/64	0/1/3/3
5	PRX	A	999	-	-	0/15/31/31	0/1/3/3
6	EDO	B	1800	-	-	0/1/1/1	0/0/0/0
6	EDO	B	1804	-	-	0/1/1/1	0/0/0/0
4	COA	B	991	-	-	0/48/64/64	0/1/3/3
5	PRX	B	998	-	-	0/15/31/31	0/1/3/3

All (24) bond length outliers are listed below:

Mol	Chain	Res	Type	Atoms	Z	Observed(Å)	Ideal(Å)
5	B	998	PRX	C2'-C1'	5.77	1.61	1.53
5	A	999	PRX	C2'-C1'	5.72	1.61	1.53
5	B	998	PRX	C3'-C4'	4.88	1.66	1.53
5	A	999	PRX	C3'-C4'	4.71	1.66	1.53
4	A	990	COA	CBP-CAP	3.75	1.59	1.55
4	B	991	COA	P1A-O3A	3.75	1.66	1.59
4	B	991	COA	CBP-CAP	3.23	1.59	1.55
5	B	998	PRX	O3'-C3'	3.22	1.50	1.43
4	B	991	COA	C4A-N3A	3.14	1.40	1.35
4	A	990	COA	C4A-N3A	3.10	1.40	1.35
5	A	999	PRX	C8-N9	3.09	1.41	1.36
5	A	999	PRX	O4'-C1'	3.05	1.46	1.41
5	B	998	PRX	O4'-C1'	2.81	1.45	1.41
4	A	990	COA	C2A-N3A	2.80	1.37	1.32
5	A	999	PRX	O3'-C3'	2.77	1.49	1.43
5	B	998	PRX	C8-N9	2.72	1.40	1.36
4	A	990	COA	P1A-O3A	2.70	1.64	1.59
4	B	991	COA	C2A-N3A	2.61	1.37	1.32
5	B	998	PRX	C3'-C2'	2.54	1.60	1.53
5	A	999	PRX	C3'-C2'	2.48	1.60	1.53
4	B	991	COA	P3B-O8A	-2.31	1.46	1.54

*Continued on next page...*

*Continued from previous page...*

Mol	Chain	Res	Type	Atoms	Z	Observed(Å)	Ideal(Å)
4	A	990	COA	P3B-O8A	-2.24	1.46	1.54
4	A	990	COA	C9P-N8P	2.11	1.38	1.33
4	B	991	COA	C9P-N8P	2.02	1.37	1.33

All (35) bond angle outliers are listed below:

Mol	Chain	Res	Type	Atoms	Z	Observed(°)	Ideal(°)
4	B	991	COA	C3P-N4P-C5P	5.36	133.74	122.84
4	A	990	COA	C3P-N4P-C5P	5.08	133.18	122.84
5	B	998	PRX	C4-C5-N7	4.95	113.76	109.52
5	A	999	PRX	C4-C5-N7	4.93	113.74	109.52
4	B	991	COA	CBP-CAP-C9P	4.54	117.13	112.73
5	A	999	PRX	N3-C2-N1	-4.43	125.00	128.71
5	B	998	PRX	N3-C2-N1	-4.39	125.04	128.71
4	B	991	COA	O4B-C1B-N9A	4.36	112.49	108.44
4	A	990	COA	O4B-C1B-N9A	4.24	112.38	108.44
4	B	991	COA	C4B-O4B-C1B	3.99	114.09	109.75
4	A	990	COA	CBP-CAP-C9P	3.98	116.59	112.73
4	A	990	COA	C4B-O4B-C1B	3.94	114.03	109.75
5	B	998	PRX	C8-N9-C4	-3.67	104.10	106.90
5	A	999	PRX	C8-N9-C4	-3.54	104.20	106.90
4	B	991	COA	N3A-C2A-N1A	-3.41	125.86	128.71
4	A	990	COA	N3A-C2A-N1A	-3.36	125.90	128.71
4	B	991	COA	C2P-C3P-N4P	-3.22	105.24	112.45
4	B	991	COA	C3P-C2P-S1P	-2.97	105.72	113.50
5	B	998	PRX	N6-C6-N1	2.93	125.11	119.36
4	A	990	COA	C3P-C2P-S1P	-2.85	106.02	113.50
5	A	999	PRX	N6-C6-N1	2.82	124.90	119.36
4	A	990	COA	C8A-N9A-C4A	-2.75	104.80	106.90
4	A	990	COA	C2P-C3P-N4P	-2.71	106.39	112.45
4	A	990	COA	O4B-C1B-C2B	-2.58	102.81	106.77
4	B	991	COA	C8A-N9A-C4A	-2.56	104.94	106.90
5	A	999	PRX	C2-N1-C6	2.54	123.36	118.77
5	A	999	PRX	C2'-C3'-C4'	-2.50	97.68	102.65
5	B	998	PRX	C2'-C3'-C4'	-2.43	97.82	102.65
5	B	998	PRX	C2-N1-C6	2.38	123.07	118.77
4	B	991	COA	O4B-C1B-C2B	-2.25	103.32	106.77
4	B	991	COA	CDP-CBP-CAP	2.09	112.45	108.82
5	B	998	PRX	C3'-C2'-C1'	2.06	104.12	100.91
4	B	991	COA	CDP-CBP-CCP	-2.04	105.82	108.76
4	A	990	COA	N3A-C4A-N9A	2.02	129.08	125.43
5	A	999	PRX	C3'-C2'-C1'	2.00	104.04	100.91



There are no chirality outliers.

There are no torsion outliers.

There are no ring outliers.

## 5.7 Other polymers ⓘ

There are no such residues in this entry.

## 5.8 Polymer linkage issues

There are no chain breaks in this entry.

## 6 Fit of model and data ⓘ

### 6.1 Protein, DNA and RNA chains ⓘ

In the following table, the column labelled ‘#RSRZ> 2’ contains the number (and percentage) of RSRZ outliers, followed by percent RSRZ outliers for the chain as percentile scores relative to all X-ray entries and entries of similar resolution. The OWAB column contains the minimum, median, 95<sup>th</sup> percentile and maximum values of the occupancy-weighted average B-factor per residue. The column labelled ‘Q< 0.9’ lists the number of (and percentage) of residues with an average occupancy less than 0.9.

Mol	Chain	Analysed	<RSRZ>	#RSRZ>2	OWAB(Å <sup>2</sup> )	Q<0.9
1	A	633/652 (97%)	-0.07	7 (1%) 77 86	10, 18, 34, 45	0
1	B	639/652 (98%)	0.04	12 (1%) 64 74	12, 19, 35, 49	0
All	All	1272/1304 (97%)	-0.01	19 (1%) 70 81	10, 19, 34, 49	0

All (19) RSRZ outliers are listed below:

Mol	Chain	Res	Type	RSRZ
1	A	610	ILE	4.4
1	A	646	GLN	4.2
1	B	601	SER	3.6
1	A	614	ILE	3.4
1	B	621	GLY	3.4
1	A	568	GLY	3.0
1	B	646	GLN	2.7
1	B	628	ASP	2.5
1	B	647	ALA	2.5
1	B	645	LYS	2.4
1	A	647	ALA	2.3
1	B	569	GLU	2.2
1	B	568	GLY	2.2
1	A	621	GLY	2.1
1	B	630	SER	2.1
1	B	629	THR	2.1
1	B	5	HIS	2.1
1	B	194	ARG	2.1
1	A	633	ALA	2.0

### 6.2 Non-standard residues in protein, DNA, RNA chains ⓘ

There are no non-standard protein/DNA/RNA residues in this entry.

### 6.3 Carbohydrates ⓘ

There are no carbohydrates in this entry.

### 6.4 Ligands ⓘ

In the following table, the Atoms column lists the number of modelled atoms in the group and the number defined in the chemical component dictionary. LLDF column lists the quality of electron density of the group with respect to its neighbouring residues in protein, DNA or RNA chains. The B-factors column lists the minimum, median, 95<sup>th</sup> percentile and maximum values of B factors of atoms in the group. The column labelled 'Q < 0.9' lists the number of atoms with occupancy less than 0.9.

Mol	Type	Chain	Res	Atoms	RSR	LLDF	B-factors(Å <sup>2</sup> )	Q<0.9
6	EDO	B	1804	4/4	0.21	1.88	37,37,37,39	0
4	COA	B	991	48/48	0.15	1.77	21,41,47,47	0
6	EDO	A	1801	4/4	0.12	1.60	13,14,17,17	0
4	COA	A	990	48/48	0.14	1.33	24,37,44,46	0
6	EDO	A	1802	4/4	0.14	1.28	37,38,39,40	0
6	EDO	A	1803	4/4	0.12	0.72	28,29,30,31	0
5	PRX	A	999	26/26	0.08	-0.14	12,15,19,19	0
6	EDO	B	1800	4/4	0.10	-0.44	14,19,20,21	0
5	PRX	B	998	26/26	0.08	-0.53	13,15,20,22	0
2	CL	A	902	1/1	0.04	-1.09	20,20,20,20	0
2	CL	B	901	1/1	0.03	-1.66	20,20,20,20	0
3	MG	A	904	1/1	0.03	-2.83	19,19,19,19	0
3	MG	B	903	1/1	0.04	-3.51	17,17,17,17	0

### 6.5 Other polymers ⓘ

There are no such residues in this entry.