



Full wwPDB X-ray Structure Validation Report

Feb 26, 2014 – 09:34 PM GMT

PDB ID : 2PG6
Title : Crystal Structure of Human Microsomal P450 2A6 L240C/N297Q
Authors : Sansen, S.; Hsu, M.H.; Stout, C.D.; Johnson, E.F.
Deposited on : 2007-04-06
Resolution : 2.53 Å(reported)

This is a full wwPDB validation report for a publicly released PDB entry.
We welcome your comments at validation@mail.wwpdb.org
A user guide is available at <http://wwpdb.org/ValidationPDFNotes.html>

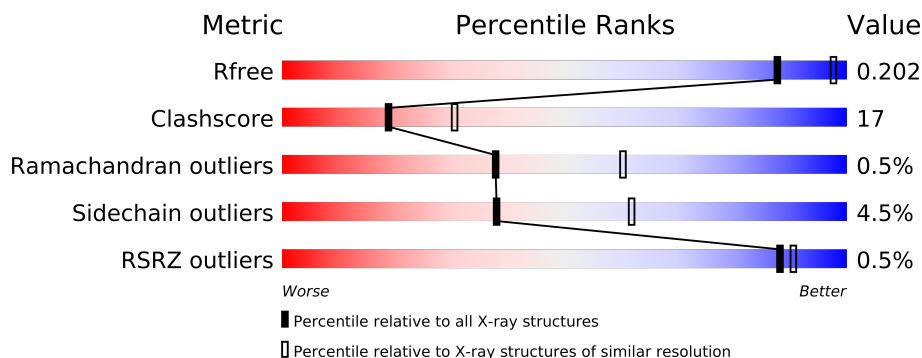
The following versions of software and data (see [references](#)) were used in the production of this report:

MolProbity : 4.02b-467
Mogul : 1.15 2013
Xtriage (Phenix) : dev-1323
EDS : stable22639
Percentile statistics : 21963
Refmac : 5.8.0049
CCP4 : 6.3.0 (Settle)
Ideal geometry (proteins) : Engh & Huber (2001)
Ideal geometry (DNA, RNA) : Parkinson et. al. (1996)
Validation Pipeline (wwPDB-VP) : stable22683

1 Overall quality at a glance

The reported resolution of this entry is 2.53 Å.

Percentile scores (ranging between 0-100) for global validation metrics of the entry are shown in the following graphic. The table shows the number of entries on which the scores are based.



Metric	Whole archive (#Entries)	Similar resolution (#Entries, resolution range(Å))
R_{free}	66092	3240 (2.54-2.50)
Clashscore	79885	4080 (2.54-2.50)
Ramachandran outliers	78287	3990 (2.54-2.50)
Sidechain outliers	78261	3992 (2.54-2.50)
RSRZ outliers	66119	3241 (2.54-2.50)

The table below summarises the geometric issues observed across the polymeric chains and their fit to the electron density. The red, orange, yellow and green segments on the lower bar indicate the fraction of residues that contain outliers for ≥ 3 , 2, 1 and 0 types of geometric quality criteria. The upper red bar (where present) indicates the fraction of residues that have poor fit to the electron density.

Mol	Chain	Length	Quality of chain
1	A	476	
1	B	476	
1	C	476	
1	D	476	

2 Entry composition

There are 3 unique types of molecules in this entry. The entry contains 15496 atoms, of which 0 are hydrogen and 0 are deuterium.

In the tables below, the ZeroOcc column contains the number of atoms modelled with zero occupancy, the AltConf column contains the number of residues with at least one atom in alternate conformation and the Trace column contains the number of residues modelled with at most 2 atoms.

- Molecule 1 is a protein called Cytochrome P450 2A6.

Mol	Chain	Residues	Atoms					ZeroOcc	AltConf	Trace
1	A	465	Total	C	N	O	S	0	0	0
			3759	2412	650	678	19			
1	B	464	Total	C	N	O	S	0	0	0
			3756	2410	650	677	19			
1	C	464	Total	C	N	O	S	0	0	0
			3750	2406	648	677	19			
1	D	464	Total	C	N	O	S	0	0	0
			3750	2406	648	677	19			

There are 52 discrepancies between the modelled and reference sequences:

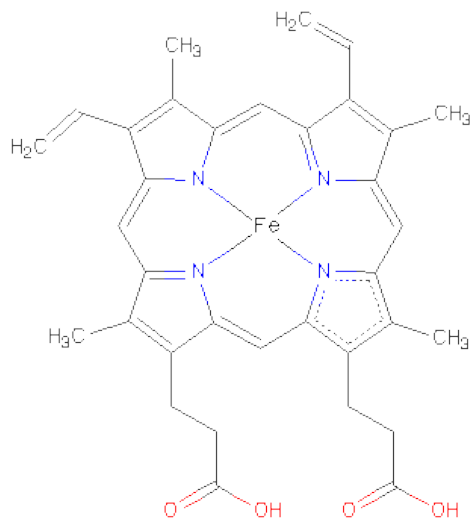
Chain	Residue	Modelled	Actual	Comment	Reference
A	23	MET	-	CLONING ARTIFACT	UNP P11509
A	24	ALA	-	CLONING ARTIFACT	UNP P11509
A	25	LYS	-	CLONING ARTIFACT	UNP P11509
A	26	LYS	-	CLONING ARTIFACT	UNP P11509
A	27	THR	-	CLONING ARTIFACT	UNP P11509
A	28	SER	-	CLONING ARTIFACT	UNP P11509
A	160	LEU	HIS	VARIANT	UNP P11509
A	240	CYS	LEU	ENGINEERED	UNP P11509
A	297	GLN	ASN	ENGINEERED	UNP P11509
A	495	HIS	-	EXPRESSION TAG	UNP P11509
A	496	HIS	-	EXPRESSION TAG	UNP P11509
A	497	HIS	-	EXPRESSION TAG	UNP P11509
A	498	HIS	-	EXPRESSION TAG	UNP P11509
B	23	MET	-	CLONING ARTIFACT	UNP P11509
B	24	ALA	-	CLONING ARTIFACT	UNP P11509
B	25	LYS	-	CLONING ARTIFACT	UNP P11509
B	26	LYS	-	CLONING ARTIFACT	UNP P11509
B	27	THR	-	CLONING ARTIFACT	UNP P11509
B	28	SER	-	CLONING ARTIFACT	UNP P11509
B	160	LEU	HIS	VARIANT	UNP P11509
B	240	CYS	LEU	ENGINEERED	UNP P11509

Continued on next page...

Continued from previous page...

Chain	Residue	Modelled	Actual	Comment	Reference
B	297	GLN	ASN	ENGINEERED	UNP P11509
B	495	HIS	-	EXPRESSION TAG	UNP P11509
B	496	HIS	-	EXPRESSION TAG	UNP P11509
B	497	HIS	-	EXPRESSION TAG	UNP P11509
B	498	HIS	-	EXPRESSION TAG	UNP P11509
C	23	MET	-	CLONING ARTIFACT	UNP P11509
C	24	ALA	-	CLONING ARTIFACT	UNP P11509
C	25	LYS	-	CLONING ARTIFACT	UNP P11509
C	26	LYS	-	CLONING ARTIFACT	UNP P11509
C	27	THR	-	CLONING ARTIFACT	UNP P11509
C	28	SER	-	CLONING ARTIFACT	UNP P11509
C	160	LEU	HIS	VARIANT	UNP P11509
C	240	CYS	LEU	ENGINEERED	UNP P11509
C	297	GLN	ASN	ENGINEERED	UNP P11509
C	495	HIS	-	EXPRESSION TAG	UNP P11509
C	496	HIS	-	EXPRESSION TAG	UNP P11509
C	497	HIS	-	EXPRESSION TAG	UNP P11509
C	498	HIS	-	EXPRESSION TAG	UNP P11509
D	23	MET	-	CLONING ARTIFACT	UNP P11509
D	24	ALA	-	CLONING ARTIFACT	UNP P11509
D	25	LYS	-	CLONING ARTIFACT	UNP P11509
D	26	LYS	-	CLONING ARTIFACT	UNP P11509
D	27	THR	-	CLONING ARTIFACT	UNP P11509
D	28	SER	-	CLONING ARTIFACT	UNP P11509
D	160	LEU	HIS	VARIANT	UNP P11509
D	240	CYS	LEU	ENGINEERED	UNP P11509
D	297	GLN	ASN	ENGINEERED	UNP P11509
D	495	HIS	-	EXPRESSION TAG	UNP P11509
D	496	HIS	-	EXPRESSION TAG	UNP P11509
D	497	HIS	-	EXPRESSION TAG	UNP P11509
D	498	HIS	-	EXPRESSION TAG	UNP P11509

- Molecule 2 is PROTOPORPHYRIN IX CONTAINING FE (three-letter code: HEM) (formula: $C_{34}H_{32}FeN_4O_4$).



Mol	Chain	Residues	Atoms					ZeroOcc	AltConf
2	A	1	Total 43	C 34	Fe 1	N 4	O 4	0	0
2	B	1	Total 43	C 34	Fe 1	N 4	O 4	0	0
2	C	1	Total 43	C 34	Fe 1	N 4	O 4	0	0
2	D	1	Total 43	C 34	Fe 1	N 4	O 4	0	0

- Molecule 3 is water.

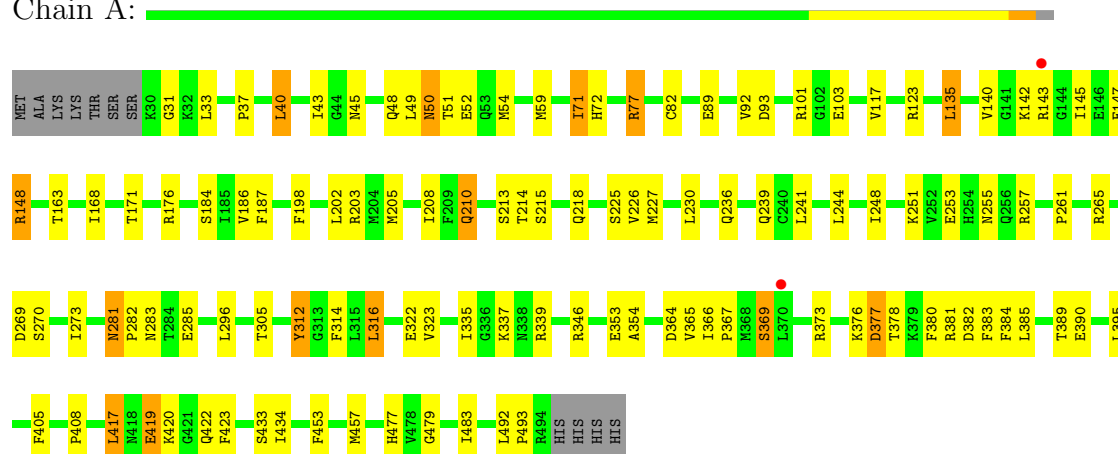
Mol	Chain	Residues	Atoms		ZeroOcc	AltConf
3	A	76	Total	O	0	0
			76	76		
3	B	65	Total	O	0	0
			65	65		
3	C	82	Total	O	0	0
			82	82		
3	D	86	Total	O	0	0
			86	86		

3 Residue-property plots

These plots are drawn for all protein, RNA and DNA chains in the entry. The first graphic for a chain summarises the proportions of errors displayed in the second graphic. The second graphic shows the sequence view annotated by issues in geometry and electron density. Residues are color-coded according to the number of geometric quality criteria for which they contain at least one outlier: green = 0, yellow = 1, orange = 2 and red = 3 or more. A red dot above a residue indicates a poor fit to the electron density ($RSRZ > 2$). Stretches of 2 or more consecutive residues without any outlier are shown as a green connector. Residues present in the sample, but not in the model, are shown in grey.

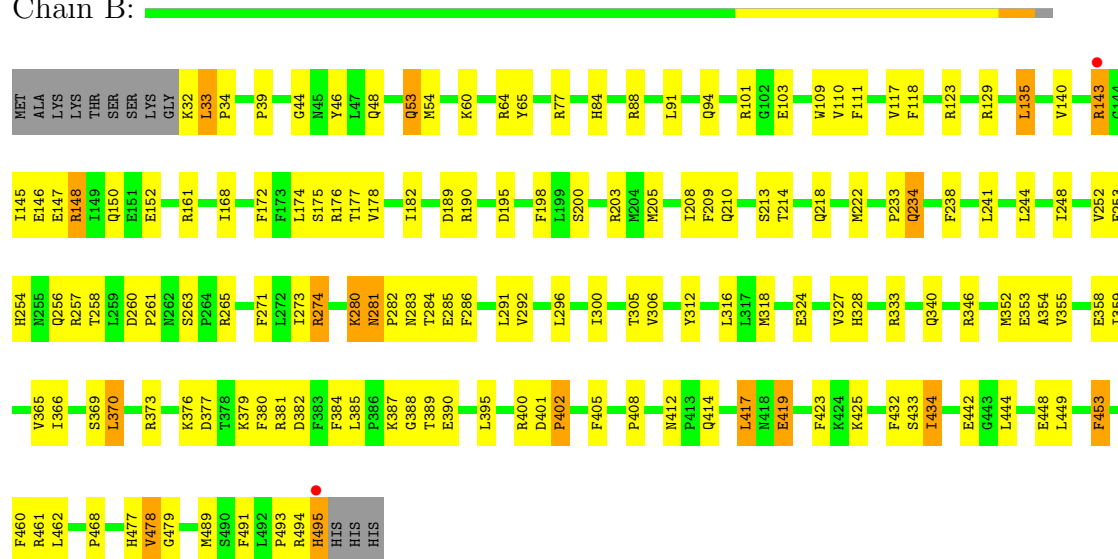
• Molecule 1: Cytochrome P450 2A6

Chain A:



• Molecule 1: Cytochrome P450 2A6

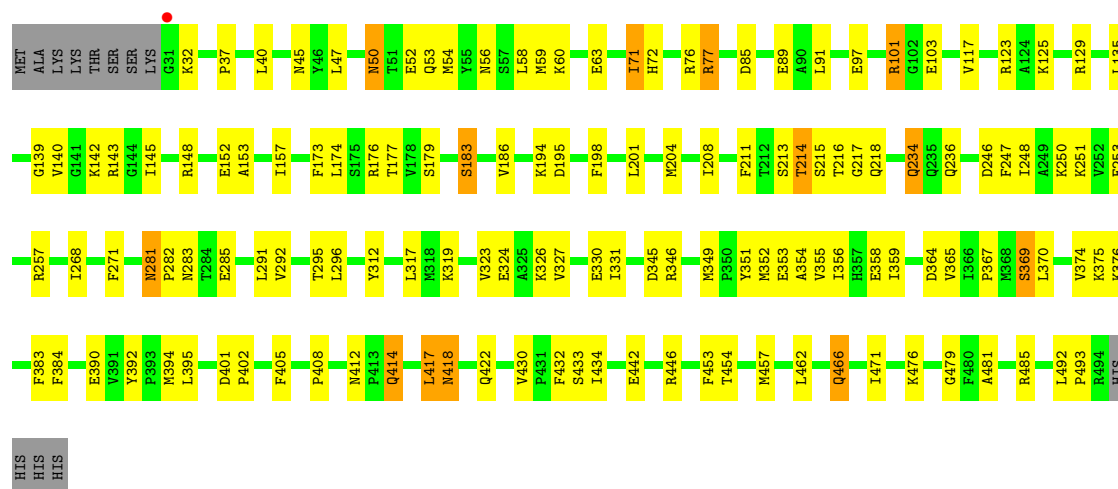
Chain B:



• Molecule 1: Cytochrome P450 2A6

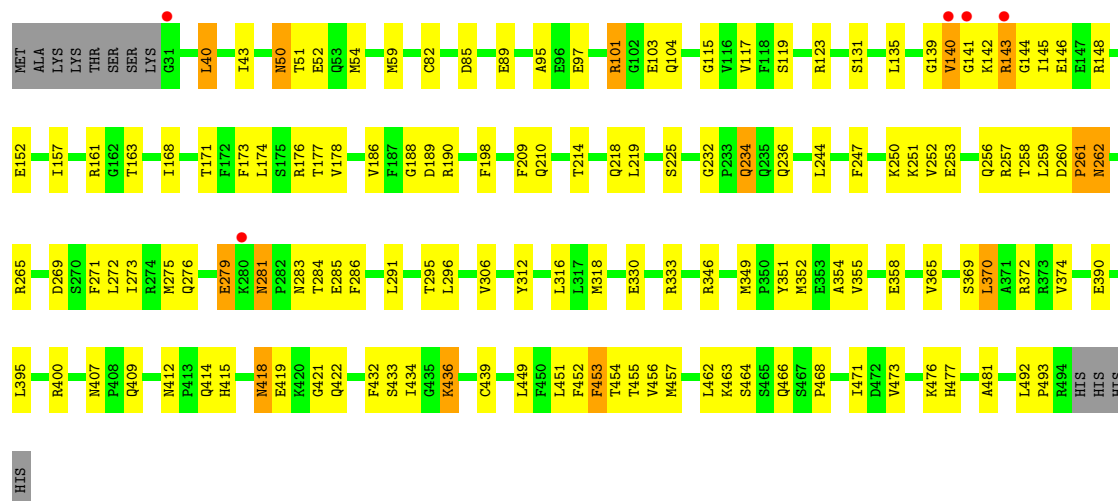
Chain C:





● Molecule 1: Cytochrome P450 2A6

Chain D:



4 Data and refinement statistics

Property	Value	Source
Space group	P 1 21 1	Depositor
Cell constants a, b, c, α , β , γ	70.70Å 158.25Å 103.76Å 90.00° 92.09° 90.00°	Depositor
Resolution (Å)	40.00 – 2.53 47.51 – 2.53	Depositor EDS
% Data completeness (in resolution range)	90.1 (40.00-2.53) 93.0 (47.51-2.53)	Depositor EDS
R_{merge}	0.10	Depositor
R_{sym}	0.10	Depositor
$\langle I/\sigma(I) \rangle$ ¹	3.59 (at 2.51Å)	Xtriage
Refinement program	CNS	Depositor
R, R_{free}	0.209 , 0.261 0.208 , 0.202	Depositor DCC
R_{free} test set	3541 reflections (5.26%)	DCC
Wilson B-factor (Å ²)	37.0	Xtriage
Anisotropy	0.443	Xtriage
Bulk solvent k_{sol} (e/Å ³), B_{sol} (Å ²)	0.32 , 18.9	EDS
Estimated twinning fraction	0.025 for h,-k,-l	Xtriage
L-test for twinning	$\langle L \rangle = 0.50$, $\langle L^2 \rangle = 0.33$	Xtriage
Outliers	1 of 70904 reflections (0.001%)	Xtriage
F_o, F_c correlation	0.94	EDS
Total number of atoms	15496	wwPDB-VP
Average B, all atoms (Å ²)	34.0	wwPDB-VP

Xtriage's analysis on translational NCS is as follows: *The largest off-origin peak in the Patterson function is 3.61% of the height of the origin peak. No significant pseudotranslation is detected.*

¹Intensities estimated from amplitudes.

5 Model quality

5.1 Standard geometry

Bond lengths and bond angles in the following residue types are not validated in this section: HEM

The Z score for a bond length (or angle) is the number of standard deviations the observed value is removed from the expected value. A bond length (or angle) with $|Z| > 5$ is considered an outlier worth inspection. RMSZ is the root-mean-square of all Z scores of the bond lengths (or angles).

Mol	Chain	Bond lengths		Bond angles	
		RMSZ	$\# Z > 5$	RMSZ	$\# Z > 5$
1	A	0.44	0/3850	0.61	0/5184
1	B	0.44	0/3848	0.62	0/5183
1	C	0.43	0/3841	0.62	0/5173
1	D	0.43	0/3841	0.63	1/5173 (0.0%)
All	All	0.44	0/15380	0.62	1/20713 (0.0%)

There are no bond length outliers.

All (1) bond angle outliers are listed below:

Mol	Chain	Res	Type	Atoms	Z	Observed(°)	Ideal(°)
1	D	104	GLN	N-CA-C	-5.13	97.16	111.00

There are no chirality outliers.

There are no planarity outliers.

5.2 Close contacts

In the following table, the Non-H and H(model) columns list the number of non-hydrogen atoms and hydrogen atoms in the chain respectively. The H(added) column lists the number of hydrogens added by MolProbity. The Clashes column lists the number of clashes within the asymmetric unit, and the number in parentheses is this value normalized per 1000 atoms of the molecule in the chain. The Symm-Clashes column gives symmetry related clashes, in the same way as for the Clashes column.

Mol	Chain	Non-H	H(model)	H(added)	Clashes	Symm-Clashes
1	A	3759	0	3743	105	0
1	B	3756	0	3734	135	0
1	C	3750	0	3730	129	0
1	D	3750	0	3730	136	0

Continued on next page...

Continued from previous page...

Mol	Chain	Non-H	H(model)	H(added)	Clashes	Symm-Clashes
2	A	43	0	30	2	0
2	B	43	0	30	1	0
2	C	43	0	30	3	0
2	D	43	0	30	3	0
3	A	76	0	0	2	0
3	B	65	0	0	1	1
3	C	82	0	0	3	1
3	D	86	0	0	9	0
All	All	15496	0	15057	501	1

Clashscore is defined as the number of clashes calculated for the entry per 1000 atoms (including hydrogens) of the entry. The overall clashscore for this entry is 17.

All (501) close contacts within the same asymmetric unit are listed below.

Atom-1	Atom-2	Distance(Å)	Clash(Å)
1:D:54:MET:HG3	1:D:218:GLN:HE21	1.16	1.10
1:D:414:GLN:HE21	1:D:414:GLN:HA	1.27	0.99
1:C:54:MET:HG3	1:C:218:GLN:HE21	1.25	0.98
1:B:54:MET:HG3	1:B:218:GLN:HE21	1.29	0.96
1:C:32:LYS:HB3	1:C:384:PHE:HB3	1.48	0.95
1:C:418:ASN:HD22	1:C:422:GLN:HB2	1.33	0.93
1:C:214:THR:HG22	1:C:217:GLY:H	1.33	0.93
1:B:365:VAL:HG12	1:B:366:ILE:HD12	1.50	0.93
1:C:77:ARG:HG2	1:C:77:ARG:HH11	1.33	0.91
1:C:45:ASN:ND2	1:C:72:HIS:H	1.69	0.90
1:C:45:ASN:HD22	1:C:72:HIS:N	1.70	0.89
1:C:45:ASN:HD22	1:C:72:HIS:H	0.92	0.89
1:B:256:GLN:HG3	1:B:257:ARG:H	1.37	0.88
1:B:205:MET:CE	1:B:300:ILE:HA	2.03	0.88
1:C:234:GLN:H	1:C:234:GLN:HE21	0.91	0.87
1:A:54:MET:HG3	1:A:218:GLN:HE21	1.38	0.87
1:D:414:GLN:NE2	1:D:414:GLN:HA	1.90	0.86
1:A:77:ARG:HG2	1:A:77:ARG:HH11	1.41	0.85
1:C:234:GLN:HE21	1:C:234:GLN:N	1.75	0.83
1:D:143:ARG:HH11	1:D:143:ARG:HG3	1.44	0.82
1:C:125:LYS:HE2	1:C:129:ARG:NH1	1.96	0.81
1:A:365:VAL:HG12	1:A:366:ILE:HD12	1.63	0.80
1:C:412:ASN:OD1	1:C:414:GLN:HB2	1.80	0.79
1:C:234:GLN:H	1:C:234:GLN:NE2	1.76	0.79
1:A:281:ASN:ND2	1:A:283:ASN:H	1.81	0.78
1:D:232:GLY:HA3	1:D:234:GLN:HE22	1.49	0.78
1:A:253:GLU:HB3	1:A:257:ARG:HH12	1.48	0.78

Continued on next page...

Continued from previous page...

Atom-1	Atom-2	Distance(Å)	Clash(Å)
1:D:247:PHE:O	1:D:251:LYS:HG2	1.83	0.78
1:D:139:GLY:HA3	1:D:145:ILE:HB	1.64	0.78
1:B:234:GLN:NE2	1:B:234:GLN:H	1.82	0.78
1:A:251:LYS:HE3	3:A:566:HOH:O	1.83	0.78
1:D:131:SER:O	1:D:135:LEU:HD13	1.84	0.77
1:D:234:GLN:NE2	1:D:234:GLN:H	1.81	0.77
1:B:77:ARG:HH12	1:B:389:THR:HG23	1.50	0.77
1:C:327:VAL:HG13	1:C:352:MET:HE1	1.67	0.77
1:C:125:LYS:HE2	1:C:129:ARG:HH12	1.49	0.77
1:C:97:GLU:HG3	3:C:513:HOH:O	1.84	0.76
1:B:256:GLN:HG3	1:B:257:ARG:N	2.01	0.76
1:B:253:GLU:HA	1:B:256:GLN:HG2	1.68	0.75
1:D:352:MET:HE3	1:D:454:THR:HG22	1.68	0.75
1:A:143:ARG:O	1:A:147:GLU:HG2	1.86	0.75
1:C:125:LYS:HE3	1:C:129:ARG:HH22	1.50	0.74
1:A:354:ALA:HB2	1:A:417:LEU:HD13	1.70	0.74
1:D:271:PHE:CG	1:D:291:LEU:HD13	2.23	0.73
1:D:123:ARG:HA	1:D:285:GLU:HG3	1.70	0.73
1:C:32:LYS:HB3	1:C:384:PHE:CB	2.19	0.73
1:B:281:ASN:ND2	1:B:283:ASN:H	1.87	0.73
1:A:77:ARG:NH1	1:A:77:ARG:HG2	2.04	0.72
1:C:179:SER:O	1:C:183:SER:HB2	1.90	0.72
1:A:227:MET:HA	1:A:230:LEU:HD12	1.72	0.72
1:D:97:GLU:HG3	3:D:535:HOH:O	1.89	0.71
1:A:346:ARG:HD2	1:A:353:GLU:OE2	1.91	0.71
1:C:32:LYS:HE2	1:C:384:PHE:HB2	1.72	0.69
1:D:50:ASN:ND2	1:D:52:GLU:H	1.90	0.69
1:D:163:THR:HG21	1:D:168:ILE:HD13	1.74	0.69
1:A:210:GLN:HA	1:A:483:ILE:CD1	2.21	0.69
1:D:161:ARG:HH11	1:D:161:ARG:HG3	1.56	0.69
1:D:234:GLN:HE21	1:D:234:GLN:H	1.39	0.69
1:D:54:MET:HG3	1:D:218:GLN:NE2	2.00	0.69
1:A:37:PRO:HB2	1:A:48:GLN:NE2	2.08	0.69
1:B:210:GLN:HE21	1:B:477:HIS:CD2	2.11	0.69
1:C:281:ASN:HD22	1:C:282:PRO:N	1.90	0.68
1:B:77:ARG:HH11	1:B:77:ARG:HG2	1.58	0.68
1:D:352:MET:CE	1:D:454:THR:HG22	2.22	0.68
1:C:201:LEU:HA	1:C:204:MET:HE3	1.76	0.67
1:C:281:ASN:HD22	1:C:282:PRO:CD	2.07	0.67
1:D:330:GLU:HA	3:D:555:HOH:O	1.95	0.67
1:B:205:MET:HE1	1:B:300:ILE:HA	1.75	0.67
1:C:453:PHE:O	1:C:457:MET:HG2	1.94	0.66

Continued on next page...

Continued from previous page...

Atom-1	Atom-2	Distance(Å)	Clash(Å)
1:D:250:LYS:HG2	1:D:250:LYS:O	1.94	0.66
1:A:210:GLN:HA	1:A:483:ILE:HD11	1.76	0.66
1:D:103:GLU:HG2	1:D:390:GLU:OE2	1.96	0.66
1:C:375:LYS:HB3	1:C:376:LYS:HE2	1.79	0.65
1:A:281:ASN:HD22	1:A:281:ASN:C	2.00	0.65
1:D:259:LEU:HD11	1:D:273:ILE:HD11	1.78	0.65
1:A:281:ASN:HD22	1:A:282:PRO:N	1.95	0.65
1:D:50:ASN:HD22	1:D:50:ASN:C	1.99	0.65
1:B:148:ARG:HH12	1:B:190:ARG:HD2	1.59	0.65
1:D:142:LYS:O	1:D:145:ILE:HG22	1.97	0.65
1:B:281:ASN:C	1:B:281:ASN:HD22	1.99	0.65
1:A:253:GLU:HB3	1:A:257:ARG:NH1	2.12	0.64
1:B:33:LEU:HD12	1:B:34:PRO:HD2	1.79	0.64
1:D:463:LYS:HD3	1:D:492:LEU:HD11	1.79	0.64
1:A:50:ASN:ND2	1:A:52:GLU:H	1.96	0.64
1:C:103:GLU:HG2	1:C:390:GLU:OE2	1.98	0.64
1:B:318:MET:HE1	1:B:489:MET:HB2	1.79	0.64
1:C:77:ARG:NH1	1:C:77:ARG:HG2	2.07	0.64
1:C:418:ASN:ND2	1:C:422:GLN:HB2	2.10	0.63
1:A:226:VAL:HG12	1:A:230:LEU:HD11	1.79	0.63
1:A:405:PHE:O	1:A:408:PRO:HD3	1.98	0.63
1:C:251:LYS:NZ	1:C:251:LYS:HB3	2.13	0.63
1:A:135:LEU:HG	1:A:140:VAL:HG21	1.80	0.63
1:C:418:ASN:ND2	1:C:422:GLN:HE21	1.96	0.63
1:D:412:ASN:HD21	1:D:414:GLN:HB2	1.64	0.63
1:B:213:SER:HA	1:B:479:GLY:HA3	1.82	0.62
1:C:204:MET:O	1:C:208:ILE:HG12	1.99	0.62
1:C:281:ASN:ND2	1:C:283:ASN:H	1.98	0.62
1:A:378:THR:HG23	3:A:539:HOH:O	2.00	0.61
1:D:186:VAL:HG11	1:D:295:THR:HG23	1.80	0.61
1:A:337:LYS:HD2	1:A:337:LYS:N	2.15	0.61
1:B:318:MET:CE	1:B:489:MET:HB2	2.30	0.61
1:A:244:LEU:O	1:A:248:ILE:HG12	2.01	0.61
1:B:365:VAL:HG12	1:B:366:ILE:CD1	2.28	0.61
1:B:354:ALA:HB2	1:B:417:LEU:HD13	1.83	0.61
1:A:71:ILE:HD13	1:A:72:HIS:N	2.16	0.61
1:D:253:GLU:HG2	1:D:257:ARG:NH2	2.15	0.61
1:B:146:GLU:O	1:B:150:GLN:HG3	2.01	0.61
1:B:205:MET:HE2	1:B:300:ILE:HA	1.81	0.61
1:D:59:MET:HE2	1:D:59:MET:HA	1.83	0.60
1:D:433:SER:HB3	2:D:500:HEM:HBA1	1.82	0.60
1:D:59:MET:HA	1:D:59:MET:CE	2.32	0.60

Continued on next page...

Continued from previous page...

Atom-1	Atom-2	Distance(Å)	Clash(Å)
1:B:253:GLU:O	1:B:256:GLN:HG3	2.02	0.59
1:A:71:ILE:HD13	1:A:72:HIS:H	1.67	0.59
1:D:95:ALA:HB1	1:D:436:LYS:HD3	1.83	0.59
1:D:101:ARG:HD2	1:D:117:VAL:O	2.02	0.59
1:C:173:PHE:HA	1:C:176:ARG:HH21	1.67	0.59
1:B:64:ARG:HD3	1:B:65:TYR:CE2	2.37	0.59
1:B:101:ARG:CZ	1:B:370:LEU:HD22	2.33	0.59
1:B:123:ARG:HA	1:B:285:GLU:HG3	1.85	0.59
1:D:358:GLU:OE1	1:D:358:GLU:HA	2.03	0.59
1:B:358:GLU:HA	1:B:358:GLU:OE1	2.02	0.59
1:B:53:GLN:NE2	1:B:478:VAL:HB	2.18	0.58
1:A:269:ASP:O	1:A:273:ILE:HG12	2.03	0.58
1:C:392:TYR:HB3	1:C:394:MET:HE2	1.84	0.58
1:D:141:GLY:H	1:D:145:ILE:HG21	1.68	0.58
1:B:423:PHE:HE1	1:B:425:LYS:HG2	1.68	0.58
1:D:139:GLY:CA	1:D:145:ILE:HB	2.31	0.58
1:B:381:ARG:O	1:B:382:ASP:HB2	2.04	0.58
1:B:400:ARG:HH11	1:B:400:ARG:HG3	1.68	0.58
1:D:143:ARG:HG3	1:D:143:ARG:NH1	2.18	0.57
1:D:50:ASN:HD22	1:D:52:GLU:H	1.51	0.57
1:C:405:PHE:O	1:C:408:PRO:HD3	2.04	0.57
1:C:352:MET:O	1:C:356:ILE:HD13	2.04	0.57
1:B:434:ILE:HD13	1:B:434:ILE:N	2.19	0.57
1:A:89:GLU:O	1:A:93:ASP:HB2	2.04	0.57
1:A:33:LEU:HD21	1:A:77:ARG:HD2	1.87	0.57
1:B:233:PRO:HD2	1:B:234:GLN:HE22	1.70	0.57
1:D:210:GLN:O	1:D:214:THR:HG23	2.04	0.57
1:D:262:ASN:N	1:D:262:ASN:HD22	2.01	0.57
1:D:476:LYS:HE2	1:D:477:HIS:NE2	2.19	0.57
1:C:211:PHE:O	1:C:214:THR:HB	2.04	0.56
1:B:253:GLU:O	1:B:256:GLN:CG	2.52	0.56
1:C:317:LEU:HD13	1:C:457:MET:CE	2.35	0.56
1:D:51:THR:HG21	1:D:219:LEU:HD13	1.86	0.56
1:C:45:ASN:ND2	1:C:72:HIS:N	2.42	0.56
1:C:327:VAL:CG1	1:C:352:MET:HE1	2.35	0.56
1:C:352:MET:CE	1:C:454:THR:HG22	2.36	0.56
1:C:326:LYS:HD2	1:C:351:TYR:CZ	2.40	0.56
1:B:210:GLN:O	1:B:214:THR:HG23	2.05	0.56
1:C:323:VAL:HG13	1:C:351:TYR:OH	2.06	0.56
1:D:59:MET:HE3	1:D:82:CYS:SG	2.45	0.56
1:B:493:PRO:C	1:B:495:HIS:N	2.56	0.56
1:C:123:ARG:HA	1:C:285:GLU:HG3	1.88	0.56

Continued on next page...

Continued from previous page...

Atom-1	Atom-2	Distance(Å)	Clash(Å)
1:B:161:ARG:HG2	1:B:460:PHE:HZ	1.70	0.56
1:D:59:MET:CE	1:D:82:CYS:SG	2.94	0.56
1:C:330:GLU:OE1	1:C:349:MET:HB3	2.05	0.56
1:C:50:ASN:HD22	1:C:50:ASN:C	2.08	0.55
1:C:433:SER:HB3	2:C:500:HEM:HBA1	1.89	0.55
1:A:117:VAL:HG22	2:A:500:HEM:HAD1	1.89	0.55
1:A:369:SER:HB2	1:A:395:LEU:HG	1.88	0.55
1:D:269:ASP:O	1:D:273:ILE:HG12	2.07	0.55
1:C:50:ASN:ND2	1:C:52:GLU:H	2.04	0.55
1:D:418:ASN:HD22	1:D:422:GLN:HG3	1.72	0.55
1:B:77:ARG:CG	1:B:77:ARG:HH11	2.19	0.55
1:C:354:ALA:HB2	1:C:417:LEU:HD13	1.88	0.55
1:C:268:ILE:HD11	1:C:295:THR:HG21	1.88	0.55
1:A:239:GLN:HA	1:A:239:GLN:OE1	2.06	0.55
1:A:50:ASN:C	1:A:50:ASN:HD22	2.09	0.54
1:B:433:SER:HB3	2:B:500:HEM:HBA1	1.89	0.54
1:B:327:VAL:HG13	1:B:352:MET:HE2	1.90	0.54
1:B:210:GLN:NE2	1:B:477:HIS:CD2	2.75	0.54
1:D:369:SER:HB2	1:D:395:LEU:HG	1.89	0.54
1:B:33:LEU:HD12	1:B:34:PRO:CD	2.38	0.54
1:A:176:ARG:HG2	1:A:198:PHE:CE2	2.42	0.54
1:D:178:VAL:HG11	1:D:306:VAL:HB	1.89	0.54
1:C:246:ASP:O	1:C:250:LYS:HG3	2.06	0.54
1:D:117:VAL:HG22	2:D:500:HEM:HAD1	1.90	0.54
1:B:327:VAL:HG13	1:B:352:MET:CE	2.38	0.54
1:B:280:LYS:O	1:B:282:PRO:HD3	2.08	0.54
1:D:453:PHE:O	1:D:457:MET:HG2	2.07	0.54
1:B:253:GLU:CA	1:B:256:GLN:HG2	2.38	0.54
1:A:123:ARG:HA	1:A:285:GLU:HG3	1.90	0.53
1:C:103:GLU:CG	1:C:390:GLU:OE2	2.56	0.53
1:C:251:LYS:HZ2	1:C:251:LYS:HB3	1.73	0.53
1:B:161:ARG:HG3	1:B:161:ARG:HH11	1.72	0.53
1:C:466:GLN:NE2	1:C:471:ILE:HA	2.24	0.53
1:A:281:ASN:ND2	1:A:281:ASN:C	2.63	0.52
1:B:109:TRP:CH2	1:B:238:PHE:HB3	2.45	0.52
1:B:324:GLU:HG2	1:B:328:HIS:CD2	2.44	0.52
1:A:59:MET:CE	1:A:59:MET:HA	2.39	0.52
1:B:412:ASN:ND2	1:B:414:GLN:HB2	2.24	0.52
1:D:418:ASN:ND2	1:D:422:GLN:HB2	2.24	0.52
1:B:449:LEU:O	1:B:453:PHE:HB2	2.09	0.52
1:B:77:ARG:NH1	1:B:389:THR:HG23	2.22	0.52
1:D:271:PHE:CB	1:D:291:LEU:HD13	2.39	0.52

Continued on next page...

Continued from previous page...

Atom-1	Atom-2	Distance(Å)	Clash(Å)
1:B:461:ARG:NH1	1:B:493:PRO:O	2.42	0.52
1:D:449:LEU:O	1:D:453:PHE:HB2	2.09	0.52
1:C:358:GLU:HA	1:C:358:GLU:OE1	2.10	0.52
1:B:135:LEU:HG	1:B:140:VAL:HG21	1.90	0.52
1:D:244:LEU:HB3	1:D:296:LEU:HD11	1.91	0.52
1:D:259:LEU:HD12	1:D:260:ASP:H	1.74	0.52
1:B:423:PHE:CE1	1:B:425:LYS:HG2	2.44	0.52
1:B:233:PRO:HD2	1:B:234:GLN:NE2	2.25	0.52
1:C:153:ALA:O	1:C:157:ILE:HG12	2.09	0.52
1:B:366:ILE:HG22	1:B:369:SER:HA	1.92	0.51
1:B:234:GLN:CD	1:B:234:GLN:H	2.14	0.51
1:D:451:LEU:O	1:D:455:THR:OG1	2.20	0.51
1:D:271:PHE:CD2	1:D:291:LEU:HD13	2.46	0.51
1:A:380:PHE:O	1:A:383:PHE:HB2	2.11	0.51
1:C:58:LEU:HD13	1:C:394:MET:HE3	1.92	0.51
1:B:248:ILE:CG2	1:B:292:VAL:HG13	2.41	0.51
1:C:418:ASN:HB2	1:C:422:GLN:H	1.75	0.51
1:A:419:GLU:OE1	1:A:419:GLU:HA	2.11	0.51
1:D:176:ARG:HG2	1:D:198:PHE:CE2	2.45	0.51
1:C:125:LYS:CE	1:C:129:ARG:HH22	2.22	0.51
1:A:281:ASN:ND2	1:A:283:ASN:N	2.55	0.51
1:C:281:ASN:C	1:C:281:ASN:HD22	2.13	0.51
1:C:53:GLN:HB3	1:C:56:ASN:HB2	1.93	0.51
1:B:281:ASN:HD22	1:B:283:ASN:H	1.58	0.51
1:B:373:ARG:HH12	1:B:390:GLU:HG3	1.75	0.51
1:B:210:GLN:NE2	1:B:477:HIS:HD2	2.09	0.50
1:A:50:ASN:C	1:A:50:ASN:ND2	2.64	0.50
1:B:400:ARG:HG3	1:B:400:ARG:NH1	2.25	0.50
1:C:117:VAL:HG22	2:C:500:HEM:HAD1	1.93	0.50
1:B:271:PHE:CG	1:B:291:LEU:HD13	2.46	0.50
1:D:452:PHE:O	1:D:456:VAL:HG23	2.10	0.50
1:C:392:TYR:HB3	1:C:394:MET:CE	2.41	0.50
1:D:457:MET:CE	1:D:462:LEU:HD21	2.41	0.50
1:D:414:GLN:HE21	1:D:414:GLN:CA	2.04	0.50
1:B:494:ARG:O	1:B:495:HIS:HB2	2.12	0.50
1:D:257:ARG:HD3	1:D:257:ARG:N	2.27	0.50
1:B:419:GLU:CD	1:B:419:GLU:H	2.13	0.50
1:D:333:ARG:NE	3:D:555:HOH:O	2.44	0.50
1:A:381:ARG:O	1:A:382:ASP:HB2	2.12	0.50
1:A:384:PHE:C	1:A:385:LEU:HD12	2.32	0.50
1:C:281:ASN:HD22	1:C:282:PRO:HD2	1.75	0.50
1:B:172:PHE:O	1:B:176:ARG:HG3	2.11	0.50

Continued on next page...

Continued from previous page...

Atom-1	Atom-2	Distance(Å)	Clash(Å)
1:D:407:ASN:H	1:D:415:HIS:HE1	1.59	0.49
1:A:255:ASN:HA	1:A:265:ARG:HH22	1.77	0.49
1:B:258:THR:HG23	1:B:265:ARG:HH12	1.77	0.49
1:D:419:GLU:C	1:D:421:GLY:H	2.13	0.49
1:B:365:VAL:CG1	1:B:366:ILE:HD12	2.34	0.49
1:C:247:PHE:HD2	1:C:248:ILE:HD12	1.77	0.49
1:C:214:THR:HG22	1:C:217:GLY:N	2.15	0.49
1:A:365:VAL:HG12	1:A:366:ILE:CD1	2.40	0.49
1:A:322:GLU:HG2	1:A:323:VAL:N	2.27	0.49
1:C:327:VAL:O	1:C:331:ILE:HG13	2.12	0.49
1:D:103:GLU:HG2	1:D:390:GLU:CD	2.33	0.49
1:B:189:ASP:CG	1:B:190:ARG:H	2.16	0.49
1:D:372:ARG:NH1	2:D:500:HEM:O1A	2.45	0.49
1:B:248:ILE:HG22	1:B:292:VAL:HG13	1.93	0.49
1:D:176:ARG:NE	3:D:516:HOH:O	2.40	0.49
1:A:202:LEU:HD23	1:A:205:MET:CE	2.42	0.49
1:D:40:LEU:HD23	1:D:43:ILE:HD11	1.95	0.49
1:C:418:ASN:HB2	1:C:422:GLN:N	2.28	0.48
1:D:281:ASN:ND2	1:D:283:ASN:H	2.11	0.48
1:B:77:ARG:HH12	1:B:389:THR:CG2	2.23	0.48
1:C:248:ILE:HG22	1:C:292:VAL:HG13	1.95	0.48
1:A:312:TYR:O	1:A:316:LEU:HD22	2.12	0.48
1:D:142:LYS:O	1:D:143:ARG:C	2.51	0.48
1:D:143:ARG:HH11	1:D:143:ARG:CG	2.17	0.48
1:C:352:MET:HE2	1:C:454:THR:HG22	1.94	0.48
1:A:49:LEU:HD11	1:A:71:ILE:CD1	2.44	0.48
1:C:355:VAL:O	1:C:359:ILE:HG13	2.12	0.48
1:D:346:ARG:NE	3:D:563:HOH:O	2.45	0.48
1:A:244:LEU:HB3	1:A:296:LEU:CD1	2.43	0.48
1:A:103:GLU:HG2	1:A:390:GLU:OE2	2.13	0.48
1:C:59:MET:O	1:C:63:GLU:HG3	2.13	0.48
1:A:142:LYS:O	1:A:145:ILE:HG22	2.14	0.48
1:B:369:SER:HB2	1:B:395:LEU:HG	1.95	0.48
1:D:161:ARG:HG3	1:D:161:ARG:NH1	2.26	0.48
1:A:45:ASN:HB2	1:A:71:ILE:CD1	2.44	0.48
1:A:208:ILE:HD13	1:A:241:LEU:CD2	2.43	0.48
1:A:244:LEU:HB3	1:A:296:LEU:HD11	1.95	0.48
1:D:140:VAL:O	1:D:140:VAL:HG12	2.14	0.48
1:B:384:PHE:C	1:B:385:LEU:HD12	2.35	0.47
1:B:172:PHE:HA	1:B:175:SER:OG	2.14	0.47
1:D:148:ARG:NH2	1:D:190:ARG:HB3	2.29	0.47
1:C:76:ARG:NH2	1:C:103:GLU:HG3	2.29	0.47

Continued on next page...

Continued from previous page...

Atom-1	Atom-2	Distance(Å)	Clash(Å)
1:D:351:TYR:O	1:D:354:ALA:HB3	2.14	0.47
1:B:355:VAL:O	1:B:359:ILE:HG13	2.14	0.47
1:D:152:GLU:HG3	1:D:177:THR:HG23	1.96	0.47
1:C:327:VAL:HG13	1:C:352:MET:CE	2.42	0.47
1:C:369:SER:OG	1:C:370:LEU:N	2.47	0.47
1:A:335:ILE:HG23	1:A:339:ARG:CZ	2.45	0.47
1:B:143:ARG:O	1:B:147:GLU:HG3	2.14	0.47
1:A:202:LEU:HD23	1:A:205:MET:HE3	1.97	0.47
1:C:37:PRO:HG2	1:C:45:ASN:OD1	2.15	0.47
1:B:84:HIS:CE1	1:B:88:ARG:HD2	2.50	0.47
1:D:493:PRO:HB2	3:D:507:HOH:O	2.13	0.47
1:D:142:LYS:O	1:D:145:ILE:N	2.47	0.47
1:A:433:SER:HB3	2:A:500:HEM:HBA1	1.96	0.47
1:A:213:SER:HA	1:A:479:GLY:HA3	1.97	0.47
1:B:281:ASN:C	1:B:281:ASN:ND2	2.63	0.47
1:B:318:MET:HE3	1:B:489:MET:HE3	1.96	0.47
1:D:59:MET:HE2	1:D:59:MET:CA	2.45	0.47
1:C:139:GLY:O	1:C:142:LYS:HB2	2.15	0.47
1:A:51:THR:OG1	1:A:215:SER:HB2	2.15	0.46
1:A:420:LYS:HB2	1:A:422:GLN:HE21	1.80	0.46
1:D:252:VAL:O	1:D:256:GLN:HB2	2.16	0.46
1:A:261:PRO:HA	1:A:273:ILE:CD1	2.45	0.46
1:B:444:LEU:O	1:B:448:GLU:HG3	2.15	0.46
1:C:296:LEU:O	1:C:296:LEU:HD12	2.15	0.46
1:C:125:LYS:HE3	1:C:129:ARG:NH2	2.24	0.46
1:C:369:SER:HB2	1:C:395:LEU:HG	1.98	0.46
1:B:77:ARG:CG	1:B:77:ARG:NH1	2.79	0.46
1:A:369:SER:HB2	1:A:395:LEU:CG	2.45	0.46
1:D:414:GLN:NE2	1:D:414:GLN:CA	2.64	0.46
1:C:281:ASN:C	1:C:281:ASN:ND2	2.69	0.46
1:B:46:TYR:HA	1:B:222:MET:HE1	1.97	0.46
1:A:49:LEU:HD11	1:A:71:ILE:HD11	1.97	0.46
1:B:53:GLN:HE21	1:B:478:VAL:HB	1.81	0.46
1:D:457:MET:HE1	1:D:462:LEU:HD21	1.98	0.46
1:B:208:ILE:HD13	1:B:241:LEU:CD2	2.46	0.46
1:A:50:ASN:HD22	1:A:51:THR:N	2.14	0.46
1:D:261:PRO:C	1:D:262:ASN:HD22	2.19	0.46
1:A:101:ARG:HD3	1:A:117:VAL:O	2.16	0.46
1:B:254:HIS:O	1:B:258:THR:HG22	2.15	0.46
1:D:272:LEU:O	1:D:276:GLN:HG3	2.15	0.46
1:D:143:ARG:O	1:D:144:GLY:C	2.54	0.46
1:D:346:ARG:CZ	3:D:563:HOH:O	2.64	0.46

Continued on next page...

Continued from previous page...

Atom-1	Atom-2	Distance(Å)	Clash(Å)
1:B:161:ARG:NH1	1:B:161:ARG:HG3	2.31	0.45
1:B:405:PHE:O	1:B:408:PRO:HD3	2.16	0.45
1:C:32:LYS:CB	1:C:384:PHE:HB3	2.32	0.45
1:D:281:ASN:O	1:D:284:THR:HG22	2.16	0.45
1:A:210:GLN:HA	1:A:483:ILE:HD13	1.98	0.45
1:C:281:ASN:HA	1:C:282:PRO:HD3	1.83	0.45
1:D:259:LEU:HD21	1:D:273:ILE:HD13	1.98	0.45
1:C:91:LEU:HD23	1:C:434:ILE:O	2.15	0.45
1:C:125:LYS:HE2	1:C:129:ARG:CZ	2.45	0.45
1:B:91:LEU:HD23	1:B:434:ILE:O	2.15	0.45
1:C:214:THR:HG22	1:C:216:THR:N	2.31	0.45
1:A:148:ARG:HD3	1:A:184:SER:OG	2.17	0.45
1:A:354:ALA:CB	1:A:417:LEU:HD13	2.44	0.45
1:B:195:ASP:HB3	1:B:198:PHE:HB3	1.99	0.45
1:D:50:ASN:HD22	1:D:51:THR:N	2.15	0.45
1:C:186:VAL:O	1:C:268:ILE:HG12	2.17	0.45
1:B:178:VAL:HG11	1:B:306:VAL:HB	1.98	0.45
1:B:244:LEU:HB3	1:B:296:LEU:HD11	1.97	0.45
1:D:161:ARG:HH11	1:D:161:ARG:CG	2.28	0.45
1:A:265:ARG:HB2	1:A:269:ASP:OD1	2.16	0.45
1:C:50:ASN:ND2	1:C:50:ASN:C	2.70	0.45
1:C:213:SER:HA	1:C:479:GLY:HA3	1.99	0.45
1:C:364:ASP:O	1:C:367:PRO:HD3	2.17	0.45
1:D:259:LEU:HD12	1:D:260:ASP:N	2.32	0.45
1:B:94:GLN:NE2	1:B:380:PHE:HD1	2.15	0.45
1:C:60:LYS:HA	1:C:60:LYS:HD2	1.80	0.45
1:A:364:ASP:O	1:A:367:PRO:HD3	2.16	0.45
1:D:50:ASN:ND2	1:D:50:ASN:C	2.68	0.44
1:B:318:MET:HE3	1:B:462:LEU:HB3	2.00	0.44
1:D:462:LEU:HD23	1:D:462:LEU:N	2.32	0.44
1:B:168:ILE:C	1:B:168:ILE:HD12	2.37	0.44
1:D:466:GLN:HG3	1:D:471:ILE:CG1	2.47	0.44
1:A:314:PHE:HE2	1:A:457:MET:HE3	1.83	0.44
1:B:376:LYS:HA	1:B:387:LYS:HG3	2.00	0.44
1:A:92:VAL:HG23	1:A:434:ILE:HD12	1.99	0.44
1:C:77:ARG:NH1	1:C:77:ARG:CG	2.79	0.44
1:D:232:GLY:CA	1:D:234:GLN:HE22	2.25	0.44
1:A:101:ARG:CD	1:A:117:VAL:O	2.65	0.44
1:A:210:GLN:O	1:A:214:THR:HG23	2.17	0.44
1:B:64:ARG:HH11	1:B:64:ARG:HG2	1.82	0.44
1:D:258:THR:OG1	1:D:265:ARG:NH1	2.51	0.44
1:A:225:SER:HB2	1:D:225:SER:HB2	1.98	0.44

Continued on next page...

Continued from previous page...

Atom-1	Atom-2	Distance(Å)	Clash(Å)
1:C:125:LYS:CE	1:C:129:ARG:HH12	2.23	0.44
1:A:417:LEU:HD12	1:A:423:PHE:HA	2.00	0.44
1:D:253:GLU:O	1:D:256:GLN:HB3	2.17	0.44
1:A:40:LEU:HD11	1:C:47:LEU:HD21	1.98	0.44
1:C:271:PHE:CD2	1:C:291:LEU:HB2	2.53	0.44
1:B:200:SER:O	1:B:203:ARG:N	2.50	0.44
1:C:97:GLU:O	1:C:374:VAL:HA	2.18	0.44
1:B:248:ILE:O	1:B:252:VAL:HG23	2.18	0.44
1:C:365:VAL:O	1:C:481:ALA:HA	2.18	0.44
1:C:214:THR:HG23	3:C:542:HOH:O	2.17	0.43
1:B:110:VAL:HG13	1:B:111:PHE:N	2.32	0.43
1:A:270:SER:O	1:A:273:ILE:HB	2.18	0.43
1:B:432:PHE:O	1:B:433:SER:HB3	2.17	0.43
1:C:140:VAL:HA	1:C:145:ILE:HG21	2.00	0.43
1:D:400:ARG:HD3	1:D:409:GLN:HE22	1.83	0.43
1:B:260:ASP:OD1	1:B:263:SER:HB3	2.17	0.43
1:C:32:LYS:O	1:C:383:PHE:HA	2.18	0.43
1:A:281:ASN:HD21	1:A:283:ASN:H	1.61	0.43
1:D:358:GLU:OE2	1:D:415:HIS:HD2	2.02	0.43
1:B:103:GLU:HG2	1:B:390:GLU:OE2	2.18	0.43
1:D:40:LEU:HA	1:D:40:LEU:HD12	1.91	0.43
1:C:194:LYS:HD3	1:C:194:LYS:HA	1.82	0.43
1:D:412:ASN:ND2	1:D:414:GLN:HB2	2.32	0.43
1:D:97:GLU:O	1:D:374:VAL:HA	2.18	0.43
1:D:143:ARG:CG	1:D:143:ARG:NH1	2.75	0.43
1:D:51:THR:HG21	1:D:219:LEU:CD1	2.49	0.43
1:D:466:GLN:HG3	1:D:471:ILE:HG12	2.01	0.43
1:B:60:LYS:HE2	3:B:539:HOH:O	2.19	0.43
1:B:253:GLU:HA	1:B:256:GLN:HE21	1.84	0.43
1:A:305:THR:HG22	1:A:366:ILE:HD11	2.01	0.43
1:C:85:ASP:O	1:C:89:GLU:HB2	2.18	0.43
1:A:477:HIS:HB2	1:A:483:ILE:HD12	2.01	0.43
1:A:186:VAL:HG23	1:A:187:PHE:N	2.34	0.43
1:B:346:ARG:HD2	1:B:353:GLU:OE2	2.18	0.43
1:C:253:GLU:CD	1:C:257:ARG:NH2	2.72	0.43
1:B:39:PRO:HB2	1:B:44:GLY:HA2	2.01	0.43
1:B:145:ILE:HA	1:B:145:ILE:HD12	1.80	0.43
1:C:214:THR:CG2	1:C:216:THR:H	2.32	0.43
1:D:143:ARG:O	1:D:146:GLU:N	2.52	0.43
1:A:283:ASN:ND2	1:D:283:ASN:ND2	2.67	0.43
1:C:345:ASP:O	1:C:349:MET:HG3	2.19	0.43
1:D:115:GLY:O	1:D:119:SER:HB3	2.19	0.43

Continued on next page...

Continued from previous page...

Atom-1	Atom-2	Distance(Å)	Clash(Å)
1:A:366:ILE:HG22	1:A:366:ILE:O	2.18	0.43
1:B:233:PRO:O	1:B:234:GLN:C	2.56	0.43
1:B:354:ALA:CB	1:B:417:LEU:HD13	2.48	0.43
1:D:372:ARG:NH2	3:D:505:HOH:O	2.51	0.43
1:B:101:ARG:HD3	1:B:117:VAL:O	2.19	0.43
1:C:476:LYS:HB2	1:C:485:ARG:HA	2.00	0.43
1:D:369:SER:OG	1:D:370:LEU:N	2.52	0.42
1:B:373:ARG:NH1	1:B:388:GLY:O	2.53	0.42
1:D:85:ASP:O	1:D:89:GLU:HB2	2.18	0.42
1:C:45:ASN:ND2	1:C:71:ILE:HD13	2.34	0.42
1:B:253:GLU:O	1:B:256:GLN:HG2	2.19	0.42
1:B:318:MET:HE3	1:B:489:MET:CE	2.49	0.42
1:B:494:ARG:O	1:B:495:HIS:CB	2.68	0.42
1:C:319:LYS:HD3	1:C:471:ILE:HB	2.00	0.42
1:A:163:THR:HG21	1:A:168:ILE:HD13	2.00	0.42
1:D:271:PHE:HB3	1:D:291:LEU:HD13	2.00	0.42
1:B:32:LYS:HE2	1:B:379:LYS:HZ1	1.83	0.42
1:B:401:ASP:HA	1:B:402:PRO:HD2	1.81	0.42
1:C:317:LEU:HD13	1:C:457:MET:HE2	2.01	0.42
1:B:489:MET:HE1	1:B:491:PHE:CZ	2.55	0.42
1:A:369:SER:HB2	1:A:395:LEU:CD1	2.50	0.42
1:C:253:GLU:CD	1:C:257:ARG:HH21	2.23	0.42
1:A:51:THR:O	1:A:215:SER:HA	2.18	0.42
1:D:419:GLU:C	1:D:421:GLY:N	2.72	0.42
1:C:125:LYS:CE	1:C:129:ARG:NH2	2.81	0.42
1:C:251:LYS:NZ	1:C:251:LYS:CB	2.81	0.42
1:C:324:GLU:OE2	1:C:462:LEU:HG	2.20	0.42
1:D:365:VAL:O	1:D:481:ALA:HA	2.20	0.42
1:D:168:ILE:HD12	1:D:173:PHE:CE1	2.55	0.42
1:B:118:PHE:CE2	1:B:370:LEU:HD21	2.55	0.42
1:C:186:VAL:CG1	1:C:295:THR:HG23	2.49	0.42
1:D:171:THR:HA	3:D:547:HOH:O	2.19	0.42
1:B:376:LYS:O	1:B:377:ASP:C	2.57	0.41
1:B:274:ARG:NH1	1:B:286:PHE:CE2	2.88	0.41
1:A:365:VAL:CG1	1:A:366:ILE:HD12	2.43	0.41
1:B:189:ASP:CG	1:B:190:ARG:N	2.74	0.41
1:C:433:SER:CB	2:C:500:HEM:HBA1	2.50	0.41
1:C:152:GLU:HG3	1:C:177:THR:HG23	2.03	0.41
1:C:195:ASP:O	1:C:198:PHE:HB3	2.19	0.41
1:B:148:ARG:HD3	1:B:148:ARG:HA	1.79	0.41
1:B:432:PHE:CE2	1:B:442:GLU:HG3	2.55	0.41
1:D:157:ILE:HD11	1:D:455:THR:HG22	2.02	0.41

Continued on next page...

Continued from previous page...

Atom-1	Atom-2	Distance(Å)	Clash(Å)
1:B:94:GLN:HE22	1:B:380:PHE:HD1	1.68	0.41
1:C:430:VAL:HA	3:C:518:HOH:O	2.19	0.41
1:B:261:PRO:O	1:B:273:ILE:HD13	2.21	0.41
1:C:492:LEU:HA	1:C:493:PRO:HD3	1.96	0.41
1:A:346:ARG:HE	1:A:346:ARG:HB3	1.52	0.41
1:C:101:ARG:HD2	1:C:117:VAL:O	2.21	0.41
1:A:59:MET:HE3	1:A:82:CYS:SG	2.60	0.41
1:C:418:ASN:ND2	1:C:422:GLN:NE2	2.65	0.41
1:B:305:THR:HG22	1:B:366:ILE:HD11	2.01	0.41
1:D:142:LYS:H	1:D:145:ILE:HG22	1.86	0.41
1:D:276:GLN:O	1:D:279:GLU:HB2	2.20	0.41
1:A:373:ARG:HA	1:A:389:THR:O	2.21	0.41
1:D:432:PHE:HB3	1:D:439:CYS:HB3	2.02	0.41
1:A:202:LEU:HA	1:A:205:MET:HE3	2.03	0.41
1:A:210:GLN:HG3	1:A:483:ILE:HD13	2.01	0.41
1:D:330:GLU:OE1	1:D:349:MET:HB3	2.21	0.41
1:A:59:MET:CE	1:A:82:CYS:SG	3.09	0.41
1:A:453:PHE:O	1:A:457:MET:HG2	2.20	0.41
1:A:203:ARG:HG2	1:A:203:ARG:HH11	1.86	0.41
1:D:101:ARG:CD	1:D:117:VAL:O	2.69	0.41
1:D:473:VAL:CG1	1:D:473:VAL:O	2.68	0.41
1:D:188:GLY:O	1:D:189:ASP:HB3	2.21	0.41
1:C:214:THR:CG2	1:C:215:SER:N	2.84	0.41
1:A:253:GLU:O	1:A:257:ARG:HG2	2.20	0.41
1:D:352:MET:HE3	1:D:454:THR:CG2	2.46	0.41
1:D:468:PRO:HA	1:D:471:ILE:HD12	2.03	0.41
1:B:152:GLU:HG3	1:B:177:THR:HG23	2.02	0.41
1:A:281:ASN:HD22	1:A:283:ASN:H	1.61	0.41
1:A:376:LYS:O	1:A:377:ASP:C	2.58	0.41
1:C:346:ARG:HD2	1:C:353:GLU:OE2	2.21	0.41
1:C:432:PHE:CE2	1:C:442:GLU:HG3	2.56	0.41
1:B:77:ARG:CZ	1:B:77:ARG:HB3	2.51	0.40
1:A:492:LEU:HA	1:A:493:PRO:HD3	1.97	0.40
1:B:234:GLN:HE21	1:B:234:GLN:H	1.66	0.40
1:D:352:MET:HG2	1:D:454:THR:HG22	2.02	0.40
1:B:318:MET:CE	1:B:462:LEU:HB3	2.52	0.40
1:C:401:ASP:OD2	1:C:402:PRO:HD2	2.22	0.40
1:D:281:ASN:C	1:D:281:ASN:HD22	2.25	0.40
1:B:258:THR:O	1:B:258:THR:OG1	2.29	0.40
1:D:351:TYR:O	1:D:355:VAL:HG23	2.20	0.40
1:A:314:PHE:HE2	1:A:457:MET:CE	2.34	0.40
1:D:318:MET:SD	1:D:464:SER:HB3	2.62	0.40

Continued on next page...

Continued from previous page...

Atom-1	Atom-2	Distance(Å)	Clash(Å)
1:C:214:THR:HG23	1:C:215:SER:N	2.36	0.40
1:B:366:ILE:HG22	1:B:369:SER:CA	2.51	0.40
1:B:281:ASN:O	1:B:284:THR:HG22	2.22	0.40
1:C:103:GLU:HG2	1:C:390:GLU:CD	2.41	0.40
1:A:45:ASN:HB2	1:A:71:ILE:HD13	2.03	0.40
1:C:351:TYR:O	1:C:355:VAL:HG23	2.21	0.40
1:A:40:LEU:HD23	1:A:43:ILE:HD11	2.04	0.40
1:A:40:LEU:HD11	1:C:47:LEU:HD11	2.04	0.40
1:D:275:MET:HG2	1:D:286:PHE:O	2.22	0.40
1:B:33:LEU:O	1:B:34:PRO:C	2.60	0.40
1:D:433:SER:O	1:D:434:ILE:HG23	2.21	0.40
1:B:333:ARG:HH11	1:B:333:ARG:HG2	1.87	0.40

All (1) symmetry-related close contacts are listed below. The label for Atom-2 includes the symmetry operator and encoded unit-cell translations to be applied.

Atom-1	Atom-2	Distance(Å)	Clash(Å)
3:B:547:HOH:O	3:C:572:HOH:O[1_554]	1.98	0.22

5.3 Torsion angles

5.3.1 Protein backbone ⓘ

In the following table, the Percentiles column shows the percent Ramachandran outliers of the chain as a percentile score with respect to all X-ray entries followed by that with respect to entries of similar resolution. The Analysed column shows the number of residues for which the backbone conformation was analysed, and the total number of residues.

Mol	Chain	Analysed	Favoured	Allowed	Outliers	Percentiles	
1	A	463/476 (97%)	437 (94%)	23 (5%)	3 (1%)	33	54
1	B	462/476 (97%)	427 (92%)	33 (7%)	2 (0%)	43	66
1	C	462/476 (97%)	440 (95%)	21 (4%)	1 (0%)	56	78
1	D	462/476 (97%)	433 (94%)	26 (6%)	3 (1%)	33	54
All	All	1849/1904 (97%)	1737 (94%)	103 (6%)	9 (0%)	38	60

All (9) Ramachandran outliers are listed below:

Mol	Chain	Res	Type
1	D	140	VAL
1	D	418	ASN

Continued on next page...

Continued from previous page...

Mol	Chain	Res	Type
1	D	261	PRO
1	A	369	SER
1	C	369	SER
1	A	171	THR
1	B	402	PRO
1	B	478	VAL
1	A	31	GLY

5.3.2 Protein sidechains ⓘ

In the following table, the Percentiles column shows the percent sidechain outliers of the chain as a percentile score with respect to all X-ray entries followed by that with respect to entries of similar resolution. The Analysed column shows the number of residues for which the sidechain conformation was analysed, and the total number of residues.

Mol	Chain	Analysed	Rotameric	Outliers	Percentiles	
1	A	412/422 (98%)	398 (97%)	14 (3%)	49	75
1	B	412/422 (98%)	388 (94%)	24 (6%)	28	48
1	C	411/422 (97%)	391 (95%)	20 (5%)	35	58
1	D	411/422 (97%)	395 (96%)	16 (4%)	43	69
All	All	1646/1688 (98%)	1572 (96%)	74 (4%)	38	62

All (74) residues with a non-rotameric sidechain are listed below:

Mol	Chain	Res	Type
1	A	40	LEU
1	A	50	ASN
1	A	71	ILE
1	A	77	ARG
1	A	135	LEU
1	A	148	ARG
1	A	210	GLN
1	A	236	GLN
1	A	281	ASN
1	A	312	TYR
1	A	316	LEU
1	A	377	ASP
1	A	417	LEU
1	A	419	GLU
1	B	33	LEU

Continued on next page...

Continued from previous page...

Mol	Chain	Res	Type
1	B	48	GLN
1	B	53	GLN
1	B	129	ARG
1	B	135	LEU
1	B	143	ARG
1	B	148	ARG
1	B	174	LEU
1	B	182	ILE
1	B	209	PHE
1	B	234	GLN
1	B	274	ARG
1	B	280	LYS
1	B	281	ASN
1	B	312	TYR
1	B	316	LEU
1	B	340	GLN
1	B	370	LEU
1	B	417	LEU
1	B	419	GLU
1	B	434	ILE
1	B	453	PHE
1	B	468	PRO
1	B	495	HIS
1	C	40	LEU
1	C	50	ASN
1	C	71	ILE
1	C	77	ARG
1	C	101	ARG
1	C	135	LEU
1	C	143	ARG
1	C	148	ARG
1	C	174	LEU
1	C	183	SER
1	C	214	THR
1	C	234	GLN
1	C	236	GLN
1	C	281	ASN
1	C	312	TYR
1	C	414	GLN
1	C	417	LEU
1	C	418	ASN
1	C	446	ARG

Continued on next page...

Continued from previous page...

Mol	Chain	Res	Type
1	C	466	GLN
1	D	40	LEU
1	D	50	ASN
1	D	101	ARG
1	D	143	ARG
1	D	174	LEU
1	D	209	PHE
1	D	234	GLN
1	D	236	GLN
1	D	262	ASN
1	D	279	GLU
1	D	281	ASN
1	D	312	TYR
1	D	316	LEU
1	D	370	LEU
1	D	436	LYS
1	D	453	PHE

Some sidechains can be flipped to improve hydrogen bonding and reduce clashes. All (54) such sidechains are listed below:

Mol	Chain	Res	Type
1	A	48	GLN
1	A	50	ASN
1	A	53	GLN
1	A	56	ASN
1	A	218	GLN
1	A	276	GLN
1	A	281	ASN
1	A	283	ASN
1	A	414	GLN
1	A	422	GLN
1	B	48	GLN
1	B	50	ASN
1	B	94	GLN
1	B	210	GLN
1	B	218	GLN
1	B	229	HIS
1	B	234	GLN
1	B	239	GLN
1	B	256	GLN
1	B	281	ASN
1	B	283	ASN

Continued on next page...

Continued from previous page...

Mol	Chain	Res	Type
1	B	328	HIS
1	B	360	GLN
1	B	407	ASN
1	B	409	GLN
1	B	414	GLN
1	C	45	ASN
1	C	50	ASN
1	C	53	GLN
1	C	56	ASN
1	C	94	GLN
1	C	218	GLN
1	C	229	HIS
1	C	234	GLN
1	C	256	GLN
1	C	281	ASN
1	C	409	GLN
1	C	418	ASN
1	C	422	GLN
1	C	466	GLN
1	D	50	ASN
1	D	53	GLN
1	D	56	ASN
1	D	94	GLN
1	D	218	GLN
1	D	234	GLN
1	D	239	GLN
1	D	262	ASN
1	D	281	ASN
1	D	283	ASN
1	D	409	GLN
1	D	414	GLN
1	D	415	HIS
1	D	418	ASN

5.3.3 RNA ⓘ

There are no RNA chains in this entry.

5.4 Non-standard residues in protein, DNA, RNA chains ⓘ

There are no non-standard protein/DNA/RNA residues in this entry.

5.5 Carbohydrates

There are no carbohydrates in this entry.

5.6 Ligand geometry

4 ligands are modelled in this entry.

In the following table, the Counts columns list the number of bonds (or angles) for which Mogul statistics could be retrieved, the number of bonds (or angles) that are observed in the model and the number of bonds (or angles) that are defined in the chemical component dictionary. The Link column lists molecule types, if any, to which the group is linked. The Z score for a bond length (or angle) is the number of standard deviations the observed value is removed from the expected value. A bond length (or angle) with $|Z| > 2$ is considered an outlier worth inspection. RMSZ is the root-mean-square of all Z scores of the bond lengths (or angles).

Mol	Type	Chain	Res	Link	Bond lengths			Bond angles		
					Counts	RMSZ	# $ Z > 2$	Counts	RMSZ	# $ Z > 2$
2	HEM	A	500	1	49,50,50	3.95	21 (42%)	46,82,82	1.75	11 (23%)
2	HEM	B	500	1	49,50,50	3.87	24 (48%)	46,82,82	1.86	18 (39%)
2	HEM	C	500	1	49,50,50	3.88	23 (46%)	46,82,82	1.88	13 (28%)
2	HEM	D	500	1	49,50,50	4.02	24 (48%)	46,82,82	1.73	13 (28%)

In the following table, the Chirals column lists the number of chiral outliers, the number of chiral centers analysed, the number of these observed in the model and the number defined in the chemical component dictionary. Similar counts are reported in the Torsion and Rings columns. '-' means no outliers of that kind were identified.

Mol	Type	Chain	Res	Link	Chirals	Torsions	Rings
2	HEM	A	500	1	-	0/14/114/114	0/0/8/8
2	HEM	B	500	1	-	0/14/114/114	0/0/8/8
2	HEM	C	500	1	-	0/14/114/114	0/0/8/8
2	HEM	D	500	1	-	0/14/114/114	0/0/8/8

All (92) bond length outliers are listed below:

Mol	Chain	Res	Type	Atoms	Z	Observed(Å)	Ideal(Å)
2	A	500	HEM	C2D-C1D	-16.67	1.40	1.44
2	D	500	HEM	C3D-C4D	-16.36	1.40	1.44
2	D	500	HEM	C2D-C1D	-16.17	1.40	1.44
2	C	500	HEM	C2D-C1D	-15.48	1.40	1.44
2	A	500	HEM	C3D-C4D	-15.24	1.40	1.44
2	B	500	HEM	C2D-C1D	-13.88	1.41	1.44

Continued on next page...

Continued from previous page...

Mol	Chain	Res	Type	Atoms	Z	Observed(Å)	Ideal(Å)
2	B	500	HEM	C2B-C1B	-13.34	1.41	1.44
2	C	500	HEM	C3D-C4D	-12.68	1.41	1.44
2	B	500	HEM	C3D-C4D	-12.40	1.41	1.44
2	C	500	HEM	C2B-C1B	-11.88	1.41	1.44
2	A	500	HEM	C2B-C1B	-7.61	1.42	1.44
2	D	500	HEM	C2B-C1B	-7.15	1.42	1.44
2	C	500	HEM	C1C-NC	-4.07	1.32	1.38
2	D	500	HEM	C1C-NC	-4.07	1.32	1.38
2	B	500	HEM	FE-NA	3.78	2.08	1.92
2	A	500	HEM	C1C-NC	-3.71	1.32	1.38
2	D	500	HEM	C3D-C2D	-3.71	1.37	1.43
2	B	500	HEM	C1C-NC	-3.70	1.32	1.38
2	A	500	HEM	C3D-C2D	-3.68	1.37	1.43
2	B	500	HEM	C1D-ND	-3.68	1.29	1.37
2	A	500	HEM	C1D-ND	-3.51	1.29	1.37
2	C	500	HEM	C1D-ND	-3.48	1.29	1.37
2	D	500	HEM	CBB-CAB	3.47	1.49	1.28
2	D	500	HEM	C1B-NB	-3.43	1.32	1.39
2	C	500	HEM	C3D-C2D	-3.41	1.37	1.43
2	B	500	HEM	CBB-CAB	3.39	1.48	1.28
2	B	500	HEM	C3D-C2D	-3.37	1.37	1.43
2	A	500	HEM	CBB-CAB	3.37	1.48	1.28
2	D	500	HEM	C1D-ND	-3.35	1.29	1.37
2	D	500	HEM	CMA-C3A	3.32	1.58	1.51
2	C	500	HEM	C1B-NB	-3.27	1.32	1.39
2	B	500	HEM	C1B-NB	-3.26	1.32	1.39
2	C	500	HEM	CBB-CAB	3.26	1.47	1.28
2	A	500	HEM	CMA-C3A	3.26	1.58	1.51
2	A	500	HEM	FE-NA	3.22	2.06	1.92
2	D	500	HEM	FE-NA	3.21	2.06	1.92
2	C	500	HEM	CMA-C3A	3.20	1.58	1.51
2	B	500	HEM	CMA-C3A	3.20	1.58	1.51
2	C	500	HEM	FE-NA	3.16	2.06	1.92
2	C	500	HEM	CMC-C2C	3.11	1.57	1.47
2	A	500	HEM	CMC-C2C	3.11	1.57	1.47
2	A	500	HEM	CHB-C1B	3.10	1.40	1.35
2	C	500	HEM	C4A-NA	-2.99	1.30	1.36
2	B	500	HEM	C4C-NC	-2.97	1.33	1.38
2	D	500	HEM	CMC-C2C	2.94	1.56	1.47
2	D	500	HEM	C4D-ND	-2.87	1.33	1.39
2	A	500	HEM	FE-ND	2.86	2.08	1.97
2	A	500	HEM	C1B-NB	-2.84	1.33	1.39

Continued on next page...

Continued from previous page...

Mol	Chain	Res	Type	Atoms	Z	Observed(Å)	Ideal(Å)
2	D	500	HEM	O2A-CGA	-2.80	1.20	1.30
2	B	500	HEM	CMC-C2C	2.79	1.56	1.47
2	C	500	HEM	C4D-ND	-2.79	1.33	1.39
2	C	500	HEM	C4C-NC	-2.78	1.34	1.38
2	D	500	HEM	FE-ND	2.78	2.08	1.97
2	D	500	HEM	CMD-C2D	2.66	1.55	1.47
2	B	500	HEM	C4A-NA	-2.65	1.31	1.36
2	B	500	HEM	FE-ND	2.63	2.07	1.97
2	B	500	HEM	CBD-CGD	2.62	1.57	1.50
2	A	500	HEM	C4B-NB	-2.61	1.31	1.37
2	D	500	HEM	C4A-NA	-2.59	1.31	1.36
2	B	500	HEM	C4D-ND	-2.58	1.34	1.39
2	A	500	HEM	C4D-ND	-2.57	1.34	1.39
2	C	500	HEM	C4B-NB	-2.57	1.31	1.37
2	B	500	HEM	C4B-NB	-2.55	1.31	1.37
2	B	500	HEM	CAA-C2A	2.54	1.56	1.52
2	A	500	HEM	O2A-CGA	-2.53	1.21	1.30
2	D	500	HEM	C4B-NB	-2.53	1.31	1.37
2	A	500	HEM	FE-NB	2.52	2.07	1.97
2	D	500	HEM	C4C-NC	-2.49	1.34	1.38
2	A	500	HEM	CMD-C2D	2.48	1.55	1.47
2	C	500	HEM	O2A-CGA	-2.39	1.21	1.30
2	D	500	HEM	FE-NB	2.37	2.06	1.97
2	D	500	HEM	CHB-C1B	2.36	1.39	1.35
2	D	500	HEM	CAA-C2A	2.34	1.56	1.52
2	A	500	HEM	CBC-CAC	2.33	1.42	1.28
2	C	500	HEM	CBC-CAC	2.29	1.42	1.28
2	B	500	HEM	O2A-CGA	-2.29	1.22	1.30
2	D	500	HEM	CBC-CAC	2.26	1.41	1.28
2	B	500	HEM	CBC-CAC	2.25	1.41	1.28
2	C	500	HEM	FE-ND	2.23	2.06	1.97
2	D	500	HEM	CHD-C4C	2.24	1.40	1.36
2	B	500	HEM	CMD-C2D	2.22	1.54	1.47
2	A	500	HEM	C4A-NA	-2.19	1.32	1.36
2	C	500	HEM	CMD-C2D	2.17	1.54	1.47
2	C	500	HEM	CHB-C1B	2.15	1.38	1.35
2	D	500	HEM	C3B-C4B	-2.15	1.41	1.44
2	C	500	HEM	C3C-C2C	-2.10	1.40	1.43
2	B	500	HEM	FE-NB	2.08	2.05	1.97
2	C	500	HEM	C1A-C2A	-2.06	1.40	1.43
2	A	500	HEM	CAA-C2A	2.06	1.55	1.52
2	B	500	HEM	C3C-C2C	-2.05	1.40	1.43

Continued on next page...

Continued from previous page...

Mol	Chain	Res	Type	Atoms	Z	Observed(Å)	Ideal(Å)
2	C	500	HEM	FE-NC	2.03	2.05	1.97
2	B	500	HEM	CAD-C3D	2.02	1.58	1.51

All (55) bond angle outliers are listed below:

Mol	Chain	Res	Type	Atoms	Z	Observed(°)	Ideal(°)
2	C	500	HEM	CHD-C4C-NC	-5.40	120.04	124.73
2	B	500	HEM	C3B-C4B-NB	-4.59	110.71	114.00
2	A	500	HEM	CHD-C4C-NC	-4.47	120.85	124.73
2	D	500	HEM	CHD-C4C-NC	-4.19	121.09	124.73
2	C	500	HEM	C3B-C4B-NB	-4.15	111.03	114.00
2	B	500	HEM	CHD-C4C-NC	-4.04	121.22	124.73
2	A	500	HEM	C3B-C4B-NB	-3.60	111.42	114.00
2	D	500	HEM	C3B-C4B-NB	-3.40	111.57	114.00
2	B	500	HEM	C1B-NB-C4B	3.28	108.52	105.16
2	A	500	HEM	C4A-CHB-C1B	3.21	131.70	127.47
2	B	500	HEM	C3A-C4A-NA	3.18	111.81	109.41
2	C	500	HEM	C1B-NB-C4B	3.18	108.42	105.16
2	C	500	HEM	C3A-C4A-NA	3.15	111.79	109.41
2	D	500	HEM	C1B-NB-C4B	3.08	108.31	105.16
2	D	500	HEM	C4D-ND-C1D	3.06	108.29	105.16
2	A	500	HEM	C4D-ND-C1D	3.03	108.27	105.16
2	B	500	HEM	C4D-ND-C1D	3.03	108.26	105.16
2	C	500	HEM	C4D-ND-C1D	2.99	108.22	105.16
2	A	500	HEM	C1B-NB-C4B	2.90	108.13	105.16
2	B	500	HEM	CHC-C1C-NC	-2.89	122.22	124.73
2	C	500	HEM	C4A-CHB-C1B	2.88	131.27	127.47
2	D	500	HEM	C4A-CHB-C1B	2.77	131.12	127.47
2	D	500	HEM	C3A-C4A-NA	2.77	111.50	109.41
2	A	500	HEM	C3A-C4A-NA	2.72	111.46	109.41
2	C	500	HEM	CHC-C1C-NC	-2.68	122.41	124.73
2	D	500	HEM	C2D-C1D-ND	-2.61	109.85	112.93
2	A	500	HEM	C2D-C1D-ND	-2.60	109.86	112.93
2	A	500	HEM	CHC-C1C-NC	-2.58	122.49	124.73
2	D	500	HEM	CHB-C1B-NB	-2.42	120.98	124.31
2	C	500	HEM	C2D-C1D-ND	-2.40	110.09	112.93
2	B	500	HEM	C2D-C1D-ND	-2.38	110.12	112.93
2	B	500	HEM	C4A-CHB-C1B	2.38	130.60	127.47
2	A	500	HEM	O2A-CGA-CBA	2.32	122.41	114.22
2	D	500	HEM	CHC-C4B-NB	-2.30	122.67	124.58
2	B	500	HEM	CHB-C4A-NA	-2.29	120.75	124.58
2	B	500	HEM	CMA-C3A-C4A	-2.22	125.21	128.62

Continued on next page...

Continued from previous page...

Mol	Chain	Res	Type	Atoms	Z	Observed(°)	Ideal(°)
2	D	500	HEM	O2A-CGA-CBA	2.20	122.01	114.22
2	C	500	HEM	O2A-CGA-CBA	2.20	122.00	114.22
2	B	500	HEM	O2A-CGA-CBA	2.18	121.91	114.22
2	D	500	HEM	CHC-C1C-NC	-2.17	122.85	124.73
2	A	500	HEM	CHC-C4B-NB	-2.17	122.78	124.58
2	D	500	HEM	CMA-C3A-C4A	-2.14	125.34	128.62
2	C	500	HEM	CMA-C3A-C4A	-2.11	125.38	128.62
2	B	500	HEM	CBA-CAA-C2A	2.09	116.37	112.69
2	B	500	HEM	CHC-C4B-NB	-2.08	122.86	124.58
2	B	500	HEM	C1A-C2A-C3A	-2.08	104.77	106.92
2	C	500	HEM	CMA-C3A-C2A	2.07	128.85	124.94
2	C	500	HEM	C4C-NC-C1C	2.06	107.68	105.53
2	B	500	HEM	O2A-CGA-O1A	-2.06	118.06	123.30
2	D	500	HEM	C4C-NC-C1C	2.04	107.66	105.53
2	A	500	HEM	C4B-CHC-C1C	2.04	131.93	126.57
2	B	500	HEM	CHB-C1B-NB	-2.04	121.51	124.31
2	B	500	HEM	CMB-C2B-C3B	2.03	130.94	126.16
2	C	500	HEM	CMB-C2B-C3B	2.01	130.89	126.16
2	B	500	HEM	C4C-NC-C1C	2.01	107.62	105.53

There are no chirality outliers.

There are no torsion outliers.

There are no ring outliers.

5.7 Other polymers ⓘ

There are no such residues in this entry.

5.8 Polymer linkage issues

There are no chain breaks in this entry.

6 Fit of model and data ⓘ

6.1 Protein, DNA and RNA chains ⓘ

In the following table, the column labelled ‘#RSRZ> 2’ contains the number (and percentage) of RSRZ outliers, followed by percent RSRZ outliers for the chain as percentile scores relative to all X-ray entries and entries of similar resolution. The OWAB column contains the minimum, median, 95th percentile and maximum values of the occupancy-weighted average B-factor per residue. The column labelled ‘Q< 0.9’ lists the number of (and percentage) of residues with an average occupancy less than 0.9.

Mol	Chain	Analysed	<RSRZ>	#RSRZ>2	OWAB(Å ²)	Q<0.9
1	A	465/476 (97%)	-0.22	2 (0%) 90 92	19, 31, 44, 53	1 (0%)
1	B	464/476 (97%)	-0.12	2 (0%) 90 92	23, 36, 49, 63	0
1	C	464/476 (97%)	-0.34	1 (0%) 93 95	21, 32, 44, 54	0
1	D	464/476 (97%)	-0.24	5 (1%) 77 79	20, 33, 49, 60	0
All	All	1857/1904 (97%)	-0.23	10 (0%) 88 90	19, 33, 47, 63	1 (0%)

All (10) RSRZ outliers are listed below:

Mol	Chain	Res	Type	RSRZ
1	C	31	GLY	4.7
1	B	495	HIS	3.8
1	D	140	VAL	3.6
1	A	370	LEU	3.3
1	B	143	ARG	2.8
1	D	143	ARG	2.7
1	D	280	LYS	2.5
1	D	141	GLY	2.4
1	A	143	ARG	2.3
1	D	31	GLY	2.1

6.2 Non-standard residues in protein, DNA, RNA chains ⓘ

There are no non-standard protein/DNA/RNA residues in this entry.

6.3 Carbohydrates ⓘ

There are no carbohydrates in this entry.

6.4 Ligands

In the following table, the Atoms column lists the number of modelled atoms in the group and the number defined in the chemical component dictionary. LLDF column lists the quality of electron density of the group with respect to its neighbouring residues in protein, DNA or RNA chains. The B-factors column lists the minimum, median, 95th percentile and maximum values of B factors of atoms in the group. The column labelled 'Q< 0.9' lists the number of atoms with occupancy less than 0.9.

Mol	Type	Chain	Res	Atoms	RSR	LLDF	B-factors(\AA^2)	Q<0.9
2	HEM	C	500	43/43	0.16	1.43	21,24,29,33	0
2	HEM	D	500	43/43	0.14	0.08	22,26,27,28	0
2	HEM	B	500	43/43	0.14	-0.05	23,27,29,31	0
2	HEM	A	500	43/43	0.13	-0.31	19,21,23,27	0

6.5 Other polymers

There are no such residues in this entry.