



# Full wwPDB X-ray Structure Validation Report

Feb 28, 2014 – 09:39 PM GMT

PDB ID : 2PG8  
Title : Crystal structure of R254K mutant of DpgC with bound substrate analog  
Authors : Fielding, E.N.  
Deposited on : 2007-04-09  
Resolution : 3.00 Å (reported)

This is a full wwPDB validation report for a publicly released PDB entry.  
We welcome your comments at [validation@mail.wwpdb.org](mailto:validation@mail.wwpdb.org)  
A user guide is available at <http://wwpdb.org/ValidationPDFNotes.html>

---

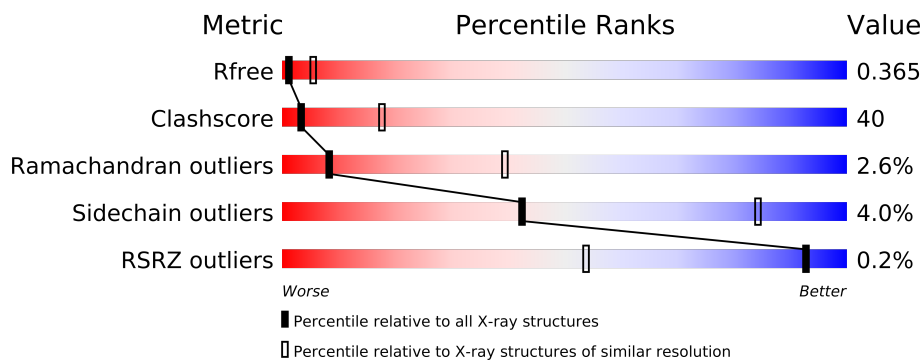
The following versions of software and data (see [references](#)) were used in the production of this report:

MolProbity : 4.02b-467  
Mogul : 1.15 2013  
Xtriage (Phenix) : dev-1323  
EDS : stable22639  
Percentile statistics : 21963  
Refmac : 5.8.0049  
CCP4 : 6.3.0 (Settle)  
Ideal geometry (proteins) : Engh & Huber (2001)  
Ideal geometry (DNA, RNA) : Parkinson et. al. (1996)  
Validation Pipeline (wwPDB-VP) : stable22683

# 1 Overall quality at a glance

The reported resolution of this entry is 3.00 Å.

Percentile scores (ranging between 0-100) for global validation metrics of the entry are shown in the following graphic. The table shows the number of entries on which the scores are based.



Metric	Whole archive (#Entries)	Similar resolution (#Entries, resolution range(Å))
$R_{free}$	66092	1216 (3.00-3.00)
Clashscore	79885	1594 (3.00-3.00)
Ramachandran outliers	78287	1537 (3.00-3.00)
Sidechain outliers	78261	1540 (3.00-3.00)
RSRZ outliers	66119	1217 (3.00-3.00)

The table below summarises the geometric issues observed across the polymeric chains and their fit to the electron density. The red, orange, yellow and green segments on the lower bar indicate the fraction of residues that contain outliers for  $\geq 3$ , 2, 1 and 0 types of geometric quality criteria. The upper red bar (where present) indicates the fraction of residues that have poor fit to the electron density.

Mol	Chain	Length	Quality of chain
1	A	417	
1	B	417	
1	C	417	

## 2 Entry composition

There are 4 unique types of molecules in this entry. The entry contains 9923 atoms, of which 0 are hydrogen and 0 are deuterium.

In the tables below, the ZeroOcc column contains the number of atoms modelled with zero occupancy, the AltConf column contains the number of residues with at least one atom in alternate conformation and the Trace column contains the number of residues modelled with at most 2 atoms.

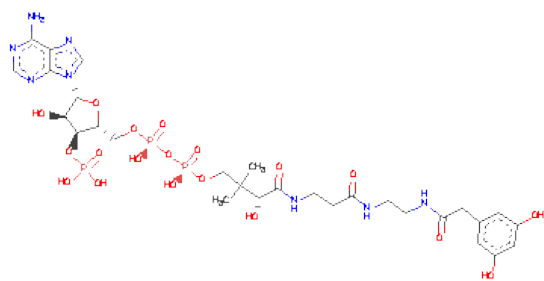
- Molecule 1 is a protein called DpgC.

Mol	Chain	Residues	Atoms					ZeroOcc	AltConf	Trace
1	A	417	Total	C	N	O	S	0	0	0
			3186	2003	588	585	10			
1	B	417	Total	C	N	O	S	0	0	0
			3232	2029	600	593	10			
1	C	415	Total	C	N	O	S	0	0	0
			3201	2010	594	587	10			

There are 3 discrepancies between the modelled and reference sequences:

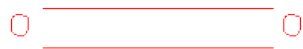
Chain	Residue	Modelled	Actual	Comment	Reference
A	254	LYS	ARG	ENGINEERED	UNP Q8KLK7
B	254	LYS	ARG	ENGINEERED	UNP Q8KLK7
C	254	LYS	ARG	ENGINEERED	UNP Q8KLK7

- Molecule 2 is [(2R,3S,4R,5R)-5-(6-AMINO-9H-PURIN-9-YL)-4-HYDROXY-3-(PHOSPHONOXY)TETRAHYDROFURAN-2-YL]METHYL(3R)-4-({3-[(2-{[(3,5-DIHYDROXYPHENYL)ACETYL]AMINO}ETHYL)AMINO]-3-OXOPROPYL}AMINO)-3-HYDROXY-2,2-DIMETHYL-4-OXOBUTYLDIHYDROGEN DIPHOSPHATE (three-letter code: YE1) (formula: C<sub>29</sub>H<sub>43</sub>N<sub>8</sub>O<sub>19</sub>P<sub>3</sub>).



Mol	Chain	Residues	Atoms					ZeroOcc	AltConf
2	A	1	Total	C	N	O	P	0	0
			59	29	8	19	3		
2	B	1	Total	C	N	O	P	0	0
			59	29	8	19	3		
2	C	1	Total	C	N	O	P	0	0
			59	29	8	19	3		

- Molecule 3 is OXYGEN MOLECULE (three-letter code: OXY) (formula: O<sub>2</sub>).



Mol	Chain	Residues	Atoms		ZeroOcc	AltConf
3	C	1	Total	O	0	0
			2	2		

Continued on next page...

*Continued from previous page...*

Mol	Chain	Residues	Atoms		ZeroOcc	AltConf
3	A	1	Total	O	0	0
			2	2		

- Molecule 4 is water.

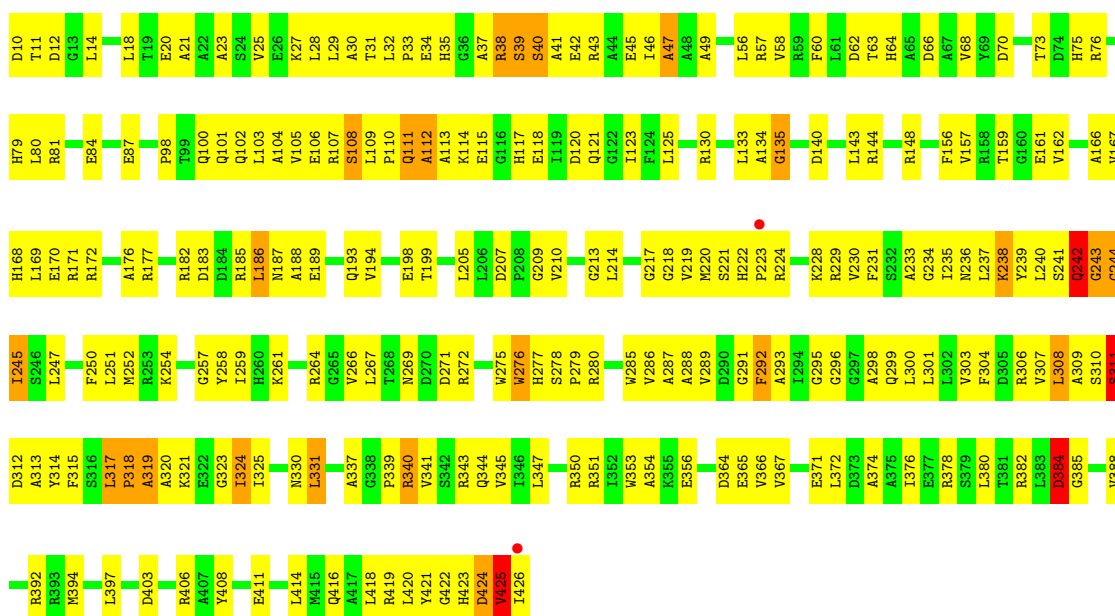
Mol	Chain	Residues	Atoms		ZeroOcc	AltConf
4	A	44	Total	O	0	0
			44	44		
4	B	43	Total	O	0	0
			43	43		
4	C	36	Total	O	0	0
			36	36		

### 3 Residue-property plots

These plots are drawn for all protein, RNA and DNA chains in the entry. The first graphic for a chain summarises the proportions of errors displayed in the second graphic. The second graphic shows the sequence view annotated by issues in geometry and electron density. Residues are color-coded according to the number of geometric quality criteria for which they contain at least one outlier: green = 0, yellow = 1, orange = 2 and red = 3 or more. A red dot above a residue indicates a poor fit to the electron density ( $RSRZ > 2$ ). Stretches of 2 or more consecutive residues without any outlier are shown as a green connector. Residues present in the sample, but not in the model, are shown in grey.

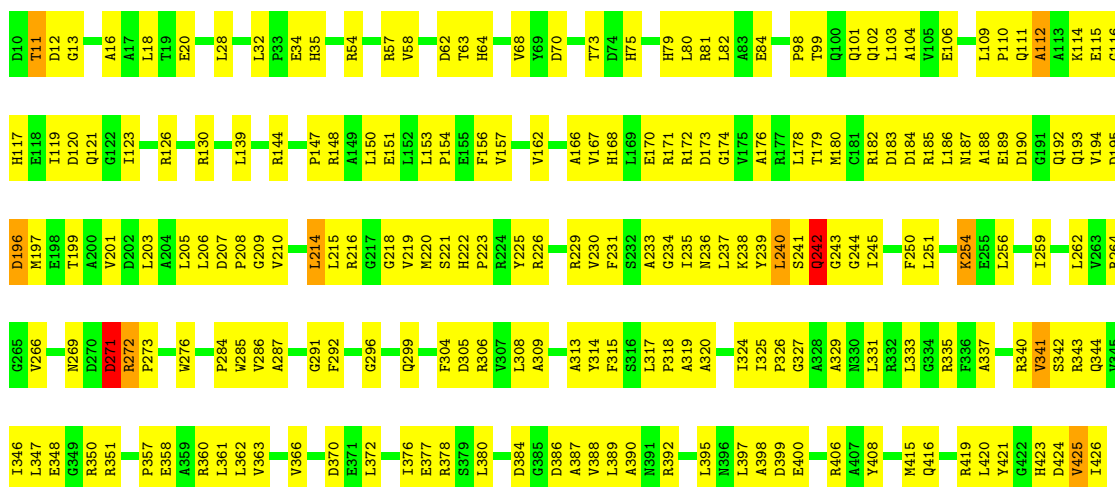
#### • Molecule 1: DpgC

Chain A:

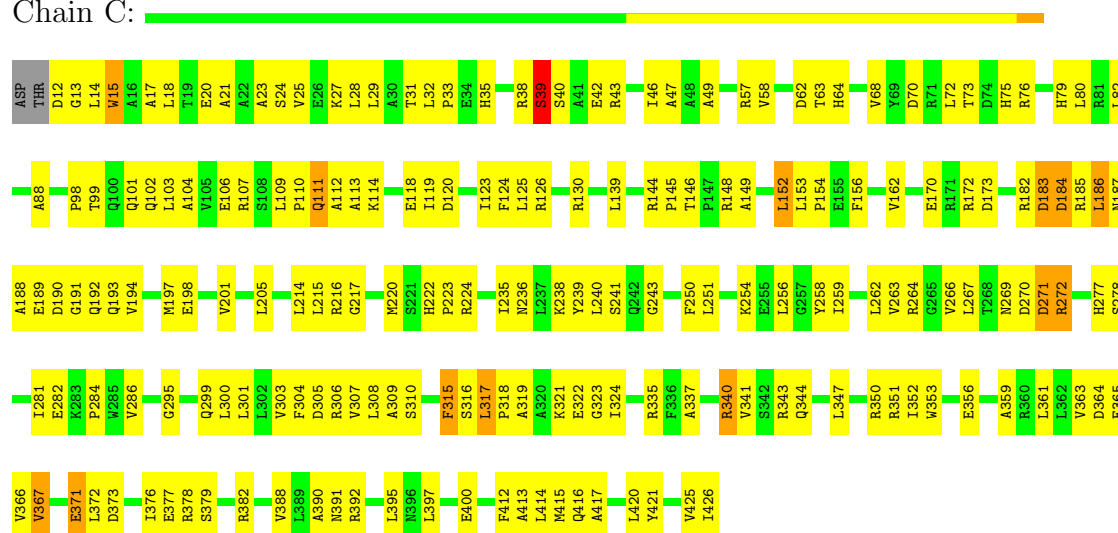


#### • Molecule 1: DpgC

Chain B:



Chain C:



## 4 Data and refinement statistics

Property	Value	Source
Space group	P 21 21 2	Depositor
Cell constants a, b, c, $\alpha$ , $\beta$ , $\gamma$	139.05Å 155.31Å 169.21Å 90.00° 90.00° 90.00°	Depositor
Resolution (Å)	50.00 – 3.00 49.54 – 3.00	Depositor EDS
% Data completeness (in resolution range)	61.2 (50.00-3.00) 93.6 (49.54-3.00)	Depositor EDS
$R_{merge}$	0.16	Depositor
$R_{sym}$	(Not available)	Depositor
$\langle I/\sigma(I) \rangle$ <sup>1</sup>	3.66 (at 3.01Å)	Xtriage
Refinement program	CNS	Depositor
R, $R_{free}$	0.331 , 0.367 0.332 , 0.365	Depositor DCC
$R_{free}$ test set	7013 reflections (10.14%)	DCC
Wilson B-factor (Å <sup>2</sup> )	55.9	Xtriage
Anisotropy	0.730	Xtriage
Bulk solvent $k_{sol}$ (e/Å <sup>3</sup> ), $B_{sol}$ (Å <sup>2</sup> )	0.34 , 21.2	EDS
Estimated twinning fraction	No twinning to report.	Xtriage
L-test for twinning	$\langle  L  \rangle = 0.49$ , $\langle L^2 \rangle = 0.32$	Xtriage
Outliers	2 of 73593 reflections (0.003%)	Xtriage
$F_o, F_c$ correlation	0.81	EDS
Total number of atoms	9923	wwPDB-VP
Average B, all atoms (Å <sup>2</sup> )	44.0	wwPDB-VP

Xtriage's analysis on translational NCS is as follows: *The analyses of the Patterson function reveals a significant off-origin peak that is 21.94 % of the origin peak, indicating pseudo translational symmetry. The chance of finding a peak of this or larger height randomly in a structure without pseudo translational symmetry is equal to 6.3135e-03. The detected translational NCS is most likely also responsible for the elevated intensity ratio.*

<sup>1</sup>Intensities estimated from amplitudes.



## 5 Model quality

### 5.1 Standard geometry

Bond lengths and bond angles in the following residue types are not validated in this section: YE1, OXY

The Z score for a bond length (or angle) is the number of standard deviations the observed value is removed from the expected value. A bond length (or angle) with  $|Z| > 5$  is considered an outlier worth inspection. RMSZ is the root-mean-square of all Z scores of the bond lengths (or angles).

Mol	Chain	Bond lengths		Bond angles	
		RMSZ	# Z  >5	RMSZ	# Z  >5
1	A	0.43	0/3245	0.64	1/4403 (0.0%)
1	B	0.44	0/3292	0.67	1/4462 (0.0%)
1	C	0.44	0/3261	0.66	0/4419
All	All	0.44	0/9798	0.66	2/13284 (0.0%)

Chiral center outliers are detected by calculating the chiral volume of a chiral center and verifying if the center is modelled as a planar moiety or with the opposite hand. A planarity outlier is detected by checking planarity of atoms in a peptide group, atoms in a mainchain group or atoms of a sidechain that are expected to be planar.

Mol	Chain	#Chirality outliers	#Planarity outliers
1	A	0	9
1	B	0	2
1	C	0	4
All	All	0	15

There are no bond length outliers.

All (2) bond angle outliers are listed below:

Mol	Chain	Res	Type	Atoms	Z	Observed(°)	Ideal(°)
1	A	108	SER	N-CA-CB	-5.62	102.07	110.50
1	B	242	GLN	O-C-N	-5.07	114.57	123.20

There are no chirality outliers.

All (15) planarity outliers are listed below:

Mol	Chain	Res	Type	Group
1	A	242	GLN	Peptide
1	A	243	GLY	Peptide

*Continued on next page...*

*Continued from previous page...*

Mol	Chain	Res	Type	Group
1	A	292	PHE	Peptide
1	A	317	LEU	Peptide
1	A	37	ALA	Peptide
1	A	384	ASP	Peptide
1	A	39	SER	Peptide
1	A	40	SER	Peptide
1	A	41	ALA	Peptide
1	B	241	SER	Mainchain
1	B	242	GLN	Mainchain
1	C	184	ASP	Peptide
1	C	317	LEU	Peptide
1	C	39	SER	Peptide
1	C	40	SER	Peptide

## 5.2 Close contacts ⓘ

In the following table, the Non-H and H(model) columns list the number of non-hydrogen atoms and hydrogen atoms in the chain respectively. The H(added) column lists the number of hydrogens added by MolProbity. The Clashes column lists the number of clashes within the asymmetric unit, and the number in parentheses is this value normalized per 1000 atoms of the molecule in the chain. The Symm-Clashes column gives symmetry related clashes, in the same way as for the Clashes column.

Mol	Chain	Non-H	H(model)	H(added)	Clashes	Symm-Clashes
1	A	3186	0	3176	327	0
1	B	3232	0	3244	244	0
1	C	3201	0	3201	221	0
2	A	59	0	37	20	0
2	B	59	0	37	13	0
2	C	59	0	37	12	0
3	A	2	0	0	1	0
3	C	2	0	0	0	0
4	A	44	0	0	4	0
4	B	43	0	0	2	0
4	C	36	0	0	2	0
All	All	9923	0	9732	784	0

Clashscore is defined as the number of clashes calculated for the entry per 1000 atoms (including hydrogens) of the entry. The overall clashscore for this entry is 40.

All (784) close contacts within the same asymmetric unit are listed below.

Atom-1	Atom-2	Distance(Å)	Clash(Å)
1:A:230:VAL:HG11	1:A:292:PHE:CE2	1.49	1.47
1:B:183:ASP:HA	1:B:220:MET:SD	1.55	1.45
1:B:337:ALA:CB	1:B:341:VAL:HG11	1.51	1.37
1:A:230:VAL:CG1	1:A:292:PHE:CE2	2.24	1.18
1:C:266:VAL:HG23	1:C:281:ILE:HG22	1.24	1.16
1:B:337:ALA:HB1	1:B:341:VAL:HG11	1.23	1.14
1:C:99:THR:HG23	1:C:102:GLN:HE21	0.96	1.12
1:C:99:THR:HG23	1:C:102:GLN:NE2	1.66	1.10
1:C:182:ARG:HH11	1:C:185:ARG:HD2	1.02	1.09
1:A:230:VAL:HG11	1:A:292:PHE:CZ	1.89	1.08
1:A:111:GLN:HA	1:A:114:LYS:HD2	1.18	1.07
1:C:111:GLN:HG2	1:C:243:GLY:HA2	1.37	1.07
1:B:337:ALA:CB	1:B:341:VAL:CG1	2.32	1.06
1:B:337:ALA:HB1	1:B:341:VAL:CG1	1.85	1.05
1:A:38:ARG:CG	1:A:38:ARG:HH11	1.67	1.05
1:C:266:VAL:CG2	1:C:281:ILE:CG2	2.35	1.03
1:B:139:LEU:CD2	1:B:256:LEU:HD22	1.87	1.03
1:B:183:ASP:CA	1:B:220:MET:SD	2.49	1.00
1:C:182:ARG:NH1	1:C:185:ARG:HD2	1.77	0.99
1:C:266:VAL:HG23	1:C:281:ILE:CG2	1.93	0.97
1:C:266:VAL:CG2	1:C:281:ILE:HG22	1.96	0.94
1:A:110:PRO:HG2	1:A:113:ALA:HB3	1.48	0.94
1:A:425:VAL:O	1:A:426:ILE:HG13	1.65	0.94
1:A:143:LEU:HD13	1:A:280:ARG:CD	1.97	0.94
1:C:191:GLY:HA2	1:C:250:PHE:HD1	1.33	0.93
1:A:12:ASP:OD2	1:A:14:LEU:HB2	1.69	0.93
1:A:183:ASP:HA	1:A:220:MET:SD	2.09	0.92
1:A:308:LEU:HD13	1:A:365:GLU:HB2	1.52	0.92
1:C:286:VAL:HG22	1:C:306:ARG:HB3	1.49	0.91
1:B:254:LYS:NZ	1:B:259:ILE:HD11	1.86	0.91
1:A:308:LEU:N	1:A:308:LEU:HD22	1.85	0.90
1:B:194:VAL:HG21	1:B:250:PHE:CD1	2.06	0.90
1:A:38:ARG:HH11	1:A:38:ARG:HG3	1.36	0.90
1:B:254:LYS:HZ3	1:B:259:ILE:HD11	1.38	0.89
1:C:186:LEU:HA	1:C:220:MET:HE2	1.51	0.89
1:B:183:ASP:HB2	1:B:221:SER:N	1.87	0.89
1:A:308:LEU:N	1:A:308:LEU:CD2	2.35	0.88
1:B:337:ALA:HB1	1:B:341:VAL:CB	2.02	0.88
1:C:308:LEU:HD23	1:C:365:GLU:HB3	1.55	0.88
1:B:337:ALA:HB3	1:B:341:VAL:HG11	1.54	0.88
1:C:254:LYS:HE3	2:C:999:YE1:OAL	1.72	0.87
1:B:423:HIS:HD2	4:B:1027:HOH:O	1.58	0.87
1:B:99:THR:H	1:B:102:GLN:HE21	1.19	0.87

Continued on next page...

*Continued from previous page...*

Atom-1	Atom-2	Distance(Å)	Clash(Å)
1:A:112:ALA:HB2	1:A:426:ILE:HG21	1.55	0.87
1:B:214:LEU:HD12	1:B:380:LEU:HD21	1.54	0.87
1:B:176:ALA:HB2	1:B:210:VAL:HG11	1.55	0.86
1:B:337:ALA:HB1	1:B:341:VAL:HG21	1.55	0.86
1:C:20:GLU:O	1:C:23:ALA:HB3	1.74	0.86
1:A:238:LYS:O	1:A:242:GLN:HG2	1.76	0.86
1:A:143:LEU:CD1	1:A:280:ARG:HD3	2.05	0.85
1:C:39:SER:H	1:C:42:GLU:HB2	1.41	0.85
1:A:38:ARG:O	1:A:40:SER:HA	1.76	0.85
1:A:337:ALA:HB1	1:A:341:VAL:HG11	1.54	0.85
1:A:319:ALA:HB1	1:A:323:GLY:HA3	1.57	0.85
1:A:183:ASP:HB2	1:A:221:SER:N	1.92	0.84
1:A:254:LYS:HE2	2:A:997:YE1:HAI	1.57	0.84
1:B:235:ILE:HD11	1:B:245:ILE:HD12	1.60	0.83
1:A:38:ARG:HH11	1:A:38:ARG:HG2	1.43	0.83
1:A:40:SER:N	1:A:42:GLU:H	1.76	0.83
1:A:143:LEU:HD13	1:A:280:ARG:HD2	1.58	0.83
1:C:186:LEU:CA	1:C:220:MET:HE2	2.07	0.83
1:C:99:THR:OG1	1:C:102:GLN:HG3	1.79	0.83
1:A:111:GLN:CA	1:A:114:LYS:HD2	2.07	0.83
1:B:337:ALA:HB1	1:B:341:VAL:CG2	2.09	0.82
1:A:108:SER:O	1:A:109:LEU:HD23	1.81	0.81
1:A:337:ALA:CB	1:A:341:VAL:HG11	2.11	0.81
1:B:286:VAL:HG22	1:B:306:ARG:HB3	1.63	0.80
1:C:39:SER:N	1:C:42:GLU:HB2	1.95	0.80
1:A:183:ASP:HB2	1:A:221:SER:H	1.45	0.80
1:C:39:SER:H	1:C:42:GLU:CB	1.94	0.80
1:A:230:VAL:CG1	1:A:292:PHE:CZ	2.58	0.80
1:A:287:ALA:HB2	1:A:304:PHE:CE1	2.17	0.80
1:B:236:ASN:HA	2:B:998:YE1:N1A	1.97	0.79
1:B:139:LEU:HD21	1:B:256:LEU:HD22	1.63	0.79
1:C:186:LEU:H	1:C:220:MET:CE	1.95	0.79
1:A:106:GLU:OE1	1:A:114:LYS:HB3	1.83	0.79
1:B:272:ARG:HH11	1:B:272:ARG:CG	1.95	0.79
1:C:99:THR:CG2	1:C:102:GLN:HE21	1.87	0.78
1:B:147:PRO:O	1:B:151:GLU:HG3	1.82	0.78
1:A:426:ILE:O	1:A:426:ILE:HG22	1.84	0.78
1:A:307:VAL:C	1:A:308:LEU:HD22	2.03	0.78
1:A:143:LEU:CD1	1:A:280:ARG:CD	2.61	0.78
1:A:189:GLU:HB2	1:A:235:ILE:HA	1.66	0.78
1:B:167:VAL:HG12	1:B:168:HIS:N	1.99	0.78
1:C:186:LEU:N	1:C:220:MET:HE2	1.99	0.77

*Continued on next page...*

*Continued from previous page...*

Atom-1	Atom-2	Distance(Å)	Clash(Å)
1:A:286:VAL:HG22	1:A:306:ARG:HB3	1.65	0.77
1:A:337:ALA:O	1:A:341:VAL:CG2	2.33	0.77
1:B:139:LEU:CD1	1:B:406:ARG:HG3	2.16	0.76
1:B:388:VAL:HG12	1:B:388:VAL:O	1.84	0.76
1:A:112:ALA:CA	1:A:426:ILE:HD13	2.15	0.76
1:B:139:LEU:HD11	1:B:406:ARG:HG3	1.65	0.76
1:A:109:LEU:HB3	1:A:110:PRO:HD2	1.67	0.76
1:B:214:LEU:HD23	1:B:214:LEU:C	2.06	0.76
1:A:29:LEU:HD11	1:A:115:GLU:HG3	1.67	0.76
1:C:28:LEU:N	1:C:28:LEU:HD12	2.01	0.76
1:B:337:ALA:HB3	1:B:341:VAL:CG1	2.12	0.76
1:B:111:GLN:O	1:B:112:ALA:CB	2.33	0.76
1:C:18:LEU:HD11	1:C:57:ARG:HG2	1.67	0.75
1:A:231:PHE:HB3	1:A:292:PHE:O	1.87	0.75
1:A:39:SER:C	1:A:42:GLU:H	1.90	0.75
1:B:139:LEU:HD23	1:B:256:LEU:HD22	1.68	0.75
1:C:182:ARG:HH11	1:C:185:ARG:CD	1.92	0.75
1:C:266:VAL:HG22	1:C:281:ILE:CG2	2.15	0.75
1:A:337:ALA:O	1:A:341:VAL:HG21	1.87	0.75
1:B:126:ARG:O	1:B:130:ARG:HG3	1.87	0.74
1:A:425:VAL:O	1:A:426:ILE:CG1	2.36	0.74
1:A:384:ASP:HB2	1:C:321:LYS:NZ	2.03	0.74
1:A:353:TRP:O	1:A:356:GLU:HG2	1.87	0.74
1:C:322:GLU:O	1:C:425:VAL:HG22	1.87	0.74
1:C:186:LEU:H	1:C:220:MET:HE2	1.49	0.74
1:A:46:ILE:HG23	1:A:47:ALA:H	1.52	0.74
1:B:82:LEU:HD11	1:B:256:LEU:HD12	1.68	0.74
1:B:361:LEU:O	1:B:362:LEU:HD23	1.88	0.74
1:B:423:HIS:CD2	4:B:1027:HOH:O	2.36	0.73
1:B:167:VAL:HG12	1:B:168:HIS:H	1.52	0.73
1:B:223:PRO:HA	1:B:226:ARG:HG3	1.69	0.73
1:B:419:ARG:O	1:B:425:VAL:HG21	1.87	0.73
1:B:291:GLY:O	1:B:313:ALA:HA	1.89	0.73
2:A:997:YE1:O9A	2:A:997:YE1:O2'	2.04	0.73
1:A:135:GLY:HA3	1:A:406:ARG:HD2	1.70	0.73
1:A:112:ALA:HB2	1:A:426:ILE:HD13	1.71	0.73
1:C:18:LEU:O	1:C:21:ALA:HB3	1.89	0.73
1:A:189:GLU:HB3	1:A:250:PHE:HZ	1.54	0.72
1:C:343:ARG:HH11	1:C:343:ARG:HG3	1.54	0.72
1:B:222:HIS:O	1:B:226:ARG:HG2	1.89	0.72
1:B:324:ILE:HD11	2:B:998:YE1:HAC1	1.72	0.72
1:B:186:LEU:HD11	1:B:225:TYR:CD1	2.24	0.72

*Continued on next page...*

*Continued from previous page...*

Atom-1	Atom-2	Distance(Å)	Clash(Å)
1:A:143:LEU:HD12	1:A:280:ARG:HD3	1.71	0.72
1:B:272:ARG:HB2	1:B:273:PRO:HD2	1.70	0.72
1:B:101:GLN:O	1:B:104:ALA:HB3	1.90	0.72
1:B:237:LEU:O	1:B:240:LEU:N	2.20	0.72
1:A:14:LEU:HD23	1:A:60:PHE:HA	1.70	0.72
1:B:189:GLU:OE2	1:B:254:LYS:HE3	1.90	0.71
1:A:254:LYS:HE2	2:A:997:YE1:CAI	2.20	0.71
1:A:261:LYS:HD3	1:A:266:VAL:HG12	1.69	0.71
1:C:39:SER:H	1:C:42:GLU:CG	2.03	0.71
1:A:98:PRO:CG	1:A:117:HIS:HB3	2.20	0.71
1:B:130:ARG:HG2	1:B:130:ARG:HH11	1.56	0.71
1:B:272:ARG:HG2	1:B:272:ARG:HH11	1.56	0.71
1:C:262:LEU:O	1:C:392:ARG:NH2	2.24	0.71
1:B:194:VAL:CG2	1:B:250:PHE:CE1	2.74	0.70
1:B:182:ARG:HB2	1:B:187:ASN:OD1	1.90	0.70
1:A:230:VAL:CG1	1:A:292:PHE:CD2	2.74	0.70
1:C:281:ILE:HG23	1:C:281:ILE:O	1.90	0.70
1:C:130:ARG:HH11	1:C:130:ARG:HG2	1.56	0.70
1:B:99:THR:N	1:B:102:GLN:HE21	1.89	0.70
1:A:217:GLY:O	1:A:229:ARG:HD3	1.89	0.70
2:B:998:YE1:O2'	2:B:998:YE1:O9A	2.08	0.70
1:C:182:ARG:O	1:C:184:ASP:N	2.22	0.70
1:A:111:GLN:HA	1:A:114:LYS:CD	2.11	0.70
1:B:139:LEU:HD21	1:B:256:LEU:CD2	2.21	0.69
1:A:422:GLY:O	1:A:425:VAL:HG12	1.93	0.69
1:A:257:GLY:O	1:A:261:LYS:HG3	1.91	0.69
1:B:296:GLY:O	1:B:299:GLN:HB2	1.92	0.69
1:B:194:VAL:CG2	1:B:250:PHE:CD1	2.76	0.69
1:C:182:ARG:HB2	1:C:187:ASN:HA	1.75	0.69
1:C:57:ARG:HD2	1:C:120:ASP:OD1	1.93	0.69
1:A:46:ILE:HG23	1:A:47:ALA:N	2.06	0.69
1:B:235:ILE:CD1	1:B:250:PHE:HE2	2.05	0.69
1:B:337:ALA:O	1:B:341:VAL:CG2	2.40	0.69
1:A:98:PRO:HG3	1:A:117:HIS:HB3	1.75	0.69
1:A:73:THR:HG22	1:A:80:LEU:HD12	1.75	0.69
1:A:425:VAL:HG13	1:A:425:VAL:O	1.93	0.68
1:B:99:THR:HG23	1:B:102:GLN:NE2	2.08	0.68
1:A:343:ARG:O	1:A:347:LEU:HB2	1.93	0.68
1:B:139:LEU:CD2	1:B:256:LEU:CD2	2.69	0.68
1:C:39:SER:O	1:C:42:GLU:HG3	1.94	0.68
1:A:311:SER:O	1:A:354:ALA:HB3	1.92	0.68
1:B:166:ALA:HB1	1:B:193:GLN:OE1	1.93	0.68

*Continued on next page...*

*Continued from previous page...*

Atom-1	Atom-2	Distance(Å)	Clash(Å)
1:A:112:ALA:CB	1:A:426:ILE:HD13	2.24	0.68
1:A:43:ARG:O	1:A:46:ILE:HG22	1.92	0.68
1:C:12:ASP:CG	1:C:13:GLY:H	1.97	0.68
1:A:87:GLU:OE2	1:A:100:GLN:HB2	1.94	0.68
1:C:182:ARG:HB3	1:C:185:ARG:HG2	1.76	0.68
1:B:317:LEU:HD12	1:B:346:ILE:HG12	1.76	0.68
1:B:186:LEU:HA	1:B:220:MET:CE	2.25	0.67
1:B:99:THR:H	1:B:102:GLN:NE2	1.92	0.67
1:B:325:ILE:O	2:B:998:YE1:HAG	1.94	0.67
1:B:73:THR:HG22	1:B:80:LEU:HD12	1.75	0.67
1:A:169:LEU:HD12	1:A:170:GLU:H	1.59	0.67
1:A:354:ALA:HB1	1:A:366:VAL:CG1	2.23	0.67
1:A:343:ARG:HH11	1:A:343:ARG:HG3	1.60	0.67
1:C:222:HIS:CE1	1:C:224:ARG:H	2.13	0.66
2:C:999:YE1:HAE	2:C:999:YE1:OAD	1.95	0.66
1:B:194:VAL:HG23	1:B:250:PHE:CE1	2.30	0.66
1:A:414:LEU:O	1:A:418:LEU:HG	1.96	0.66
1:B:254:LYS:NZ	1:B:259:ILE:CD1	2.58	0.66
1:A:38:ARG:HG2	1:A:38:ARG:NH1	2.06	0.66
2:A:997:YE1:HAE	2:A:997:YE1:OAD	1.95	0.66
1:C:371:GLU:HG3	1:C:371:GLU:O	1.95	0.66
1:C:186:LEU:CD1	1:C:220:MET:HE2	2.25	0.66
1:C:282:GLU:OE1	1:C:392:ARG:NH1	2.29	0.66
1:B:337:ALA:HB2	1:B:341:VAL:HG11	1.72	0.66
1:A:39:SER:HA	1:A:40:SER:HB3	1.78	0.65
1:B:183:ASP:OD2	1:B:221:SER:HB3	1.96	0.65
2:B:998:YE1:OAD	2:B:998:YE1:HAE	1.95	0.65
1:C:235:ILE:HB	2:C:999:YE1:HAE	1.78	0.65
1:B:170:GLU:OE1	1:B:172:ARG:HD3	1.96	0.65
1:A:110:PRO:O	1:A:111:GLN:C	2.35	0.65
1:A:185:ARG:O	1:A:186:LEU:HB2	1.95	0.65
1:C:103:LEU:O	1:C:106:GLU:HB2	1.97	0.65
1:A:39:SER:O	1:A:42:GLU:N	2.30	0.65
1:A:304:PHE:O	1:C:340:ARG:NH2	2.29	0.65
1:A:43:ARG:CA	1:A:46:ILE:HG22	2.27	0.65
1:C:216:ARG:HG2	1:C:217:GLY:H	1.62	0.65
1:A:287:ALA:HB2	1:A:304:PHE:CD1	2.32	0.65
1:B:172:ARG:O	1:B:173:ASP:HB2	1.97	0.65
1:A:425:VAL:CG1	1:A:425:VAL:O	2.44	0.65
1:A:397:LEU:HD23	1:A:397:LEU:O	1.97	0.64
1:B:237:LEU:O	1:B:239:TYR:N	2.30	0.64
1:A:112:ALA:HA	1:A:426:ILE:CD1	2.28	0.64

*Continued on next page...*



*Continued from previous page...*

Atom-1	Atom-2	Distance(Å)	Clash(Å)
1:A:267:LEU:HA	1:A:280:ARG:HG2	1.80	0.64
1:B:98:PRO:HG3	1:B:117:HIS:HB3	1.79	0.64
1:C:191:GLY:HA2	1:C:250:PHE:CD1	2.23	0.64
1:A:318:PRO:O	1:A:320:ALA:N	2.30	0.64
1:A:143:LEU:HD13	1:A:280:ARG:HD3	1.71	0.64
1:C:111:GLN:HB2	1:C:241:SER:O	1.98	0.64
1:B:272:ARG:NH1	1:B:272:ARG:CG	2.59	0.64
1:A:112:ALA:HA	1:A:426:ILE:HD13	1.80	0.64
1:B:176:ALA:HB2	1:B:210:VAL:CG1	2.27	0.64
1:A:239:TYR:O	1:A:244:GLY:N	2.31	0.63
1:A:367:VAL:CG1	1:A:372:LEU:HD13	2.28	0.63
1:C:35:HIS:CE1	1:C:113:ALA:HA	2.33	0.63
1:C:28:LEU:HD12	1:C:28:LEU:H	1.62	0.63
1:A:275:TRP:CD1	1:A:279:PRO:HA	2.33	0.63
1:C:266:VAL:HG22	1:C:281:ILE:HG23	1.80	0.63
1:C:372:LEU:O	1:C:376:ILE:HG13	1.98	0.63
1:A:264:ARG:HH11	1:A:264:ARG:HG2	1.63	0.63
1:C:73:THR:HG22	1:C:80:LEU:HD12	1.81	0.63
1:A:111:GLN:HB2	1:A:243:GLY:CA	2.28	0.63
1:C:308:LEU:HD21	1:C:365:GLU:OE1	1.99	0.63
1:B:305:ASP:OD2	1:B:392:ARG:NH1	2.32	0.63
1:A:111:GLN:HB2	1:A:243:GLY:HA2	1.80	0.63
1:C:82:LEU:HB2	4:C:1007:HOH:O	1.97	0.63
1:A:118:GLU:HB2	1:A:421:TYR:HE2	1.63	0.63
1:B:357:PRO:HA	1:B:360:ARG:NH1	2.14	0.62
1:A:46:ILE:CG2	1:A:47:ALA:H	2.12	0.62
1:B:309:ALA:HB3	1:B:363:VAL:HG11	1.80	0.62
1:A:38:ARG:CG	1:A:38:ARG:NH1	2.39	0.62
1:A:411:GLU:HG2	4:A:1020:HOH:O	2.00	0.62
1:A:254:LYS:NZ	1:A:259:ILE:HD11	2.15	0.62
1:C:111:GLN:HG3	1:C:240:LEU:O	1.99	0.62
1:A:319:ALA:CB	1:A:323:GLY:HA3	2.29	0.62
1:A:170:GLU:OE2	1:A:172:ARG:HD3	2.00	0.62
1:B:99:THR:HG23	1:B:102:GLN:HE21	1.63	0.61
1:B:337:ALA:CB	1:B:341:VAL:CB	2.72	0.61
1:C:186:LEU:HD12	1:C:220:MET:HE2	1.81	0.61
1:B:372:LEU:O	1:B:376:ILE:HG13	2.00	0.61
1:A:354:ALA:HB1	1:A:366:VAL:HG13	1.82	0.61
1:A:314:TYR:CG	1:A:351:ARG:HD2	2.35	0.61
2:A:997:YE1:HC8	2:A:997:YE1:O10	2.01	0.61
1:B:176:ALA:CB	1:B:210:VAL:HG11	2.30	0.61
1:A:374:ALA:HB1	1:A:378:ARG:HH12	1.66	0.61

*Continued on next page...*



*Continued from previous page...*

Atom-1	Atom-2	Distance(Å)	Clash(Å)
2:C:999:YE1:O10	2:C:999:YE1:HC8	2.01	0.61
1:A:235:ILE:H	2:A:997:YE1:HC22	1.66	0.60
1:A:27:LYS:O	1:A:30:ALA:N	2.34	0.60
1:A:343:ARG:HB3	1:A:347:LEU:HD12	1.83	0.60
1:A:296:GLY:O	1:A:299:GLN:HB2	2.00	0.60
1:C:222:HIS:CG	1:C:223:PRO:HD2	2.36	0.60
1:B:166:ALA:HB1	1:B:193:GLN:CD	2.22	0.60
1:B:376:ILE:O	1:B:380:LEU:HG	2.01	0.60
1:A:106:GLU:CD	1:A:114:LYS:HB3	2.21	0.60
1:B:167:VAL:CG1	1:B:168:HIS:H	2.14	0.60
2:C:999:YE1:HO10	2:C:999:YE1:C8A	2.15	0.60
1:B:194:VAL:HG23	1:B:250:PHE:HE1	1.67	0.59
1:A:109:LEU:HB3	1:A:110:PRO:CD	2.32	0.59
1:A:10:ASP:O	1:A:12:ASP:N	2.34	0.59
1:A:241:SER:O	1:A:243:GLY:N	2.34	0.59
1:B:111:GLN:O	1:B:112:ALA:HB2	2.01	0.59
1:C:397:LEU:HD23	1:C:397:LEU:O	2.02	0.59
1:B:109:LEU:HB3	1:B:110:PRO:HD2	1.84	0.59
1:B:226:ARG:HH11	1:B:226:ARG:HG3	1.67	0.59
1:B:157:VAL:HA	1:B:171:ARG:NH2	2.17	0.59
1:C:307:VAL:HG12	1:C:363:VAL:HG13	1.83	0.59
1:A:272:ARG:NH2	1:A:278:SER:O	2.35	0.59
1:B:343:ARG:HG3	1:B:343:ARG:HH11	1.66	0.59
1:A:189:GLU:OE1	2:A:997:YE1:HAE	2.02	0.59
1:C:350:ARG:HG2	1:C:351:ARG:N	2.17	0.59
1:B:325:ILE:HD11	1:C:390:ALA:HB1	1.82	0.59
1:A:39:SER:O	1:A:42:GLU:CA	2.50	0.59
1:A:310:SER:O	1:A:311:SER:C	2.41	0.59
1:B:357:PRO:HA	1:B:360:ARG:HH11	1.67	0.59
1:A:12:ASP:OD2	1:A:14:LEU:CB	2.48	0.59
1:A:166:ALA:HB1	1:A:193:GLN:OE1	2.03	0.59
1:B:11:THR:C	1:B:13:GLY:H	2.07	0.58
1:B:318:PRO:O	1:B:320:ALA:N	2.34	0.58
1:C:324:ILE:HB	1:C:416:GLN:HE22	1.67	0.58
1:C:235:ILE:H	2:C:999:YE1:HC22	1.69	0.58
1:A:364:ASP:OD2	1:C:340:ARG:NH1	2.35	0.58
1:B:16:ALA:O	1:B:20:GLU:HB2	2.03	0.58
1:B:340:ARG:NH2	1:C:301:LEU:O	2.36	0.58
1:A:183:ASP:HA	1:A:220:MET:CE	2.33	0.58
2:A:997:YE1:C8A	2:A:997:YE1:O10	2.51	0.58
1:C:263:VAL:CG2	1:C:303:VAL:HG13	2.34	0.58
1:A:222:HIS:CG	1:A:223:PRO:HD2	2.39	0.58

*Continued on next page...*

*Continued from previous page...*

Atom-1	Atom-2	Distance(Å)	Clash(Å)
1:C:21:ALA:O	1:C:25:VAL:HG23	2.03	0.58
1:B:194:VAL:HG21	1:B:250:PHE:CE1	2.38	0.58
1:A:205:LEU:HD12	1:A:266:VAL:HG13	1.85	0.58
1:A:230:VAL:HG11	1:A:292:PHE:HE2	1.53	0.57
1:A:254:LYS:CE	2:A:997:YE1:HAI	2.32	0.57
1:A:40:SER:N	1:A:42:GLU:N	2.50	0.57
1:A:236:ASN:OD1	1:A:238:LYS:CB	2.52	0.57
1:C:310:SER:HB3	1:C:372:LEU:HD22	1.86	0.57
1:C:216:ARG:HG2	1:C:217:GLY:N	2.19	0.57
1:A:35:HIS:HA	1:A:38:ARG:HG2	1.86	0.57
1:B:348:GLU:HG3	1:C:306:ARG:NH1	2.19	0.57
2:B:998:YE1:C8A	2:B:998:YE1:HO10	2.18	0.57
1:C:281:ILE:HD11	4:C:1023:HOH:O	2.04	0.57
1:B:235:ILE:HD11	1:B:250:PHE:CE2	2.39	0.57
1:A:312:ASP:O	1:A:312:ASP:CG	2.42	0.57
2:A:997:YE1:C8A	2:A:997:YE1:HO10	2.18	0.57
1:C:14:LEU:O	1:C:17:ALA:HB3	2.04	0.57
1:A:218:GLY:O	1:A:220:MET:HE2	2.04	0.57
1:C:343:ARG:HG3	1:C:343:ARG:NH1	2.20	0.57
1:C:269:ASN:HB2	1:C:271:ASP:OD2	2.05	0.57
1:A:254:LYS:HD2	4:A:1006:HOH:O	2.04	0.56
1:C:111:GLN:HA	1:C:114:LYS:HE3	1.87	0.56
1:A:235:ILE:HB	2:A:997:YE1:CAB	2.34	0.56
1:C:222:HIS:CD2	2:C:999:YE1:H4'	2.40	0.56
1:A:308:LEU:CD1	1:A:365:GLU:HB2	2.31	0.56
1:C:28:LEU:H	1:C:28:LEU:CD1	2.18	0.56
1:A:125:LEU:CD1	1:A:252:MET:HG3	2.36	0.56
1:A:222:HIS:CE1	1:A:224:ARG:H	2.23	0.56
1:B:206:LEU:O	1:B:208:PRO:HD3	2.06	0.56
1:C:182:ARG:C	1:C:184:ASP:H	2.07	0.56
2:C:999:YE1:O10	2:C:999:YE1:C8A	2.53	0.56
1:A:46:ILE:CG2	1:A:47:ALA:N	2.68	0.56
1:C:146:THR:O	1:C:149:ALA:HB3	2.04	0.56
1:B:28:LEU:O	1:B:32:LEU:HB2	2.05	0.56
1:C:284:PRO:HA	1:C:305:ASP:OD2	2.06	0.56
1:B:254:LYS:HZ2	1:B:259:ILE:CD1	2.19	0.56
1:A:35:HIS:HA	1:A:38:ARG:NH1	2.20	0.56
1:B:153:LEU:N	1:B:154:PRO:HD2	2.21	0.56
1:A:110:PRO:O	1:A:112:ALA:N	2.38	0.56
1:A:272:ARG:HG2	1:A:272:ARG:NH1	2.21	0.56
1:A:378:ARG:O	1:A:382:ARG:HG3	2.06	0.56
1:C:39:SER:N	1:C:42:GLU:OE1	2.38	0.55

*Continued on next page...*

*Continued from previous page...*

Atom-1	Atom-2	Distance(Å)	Clash(Å)
1:A:186:LEU:HD12	1:A:220:MET:HG3	1.87	0.55
1:B:314:TYR:CD2	1:B:351:ARG:HD2	2.41	0.55
1:B:235:ILE:HD11	1:B:250:PHE:HE2	1.71	0.55
1:C:28:LEU:N	1:C:28:LEU:CD1	2.68	0.55
1:B:207:ASP:OD2	1:B:210:VAL:HG23	2.07	0.55
1:A:222:HIS:CD2	2:A:997:YE1:H4'	2.42	0.55
1:A:272:ARG:HH11	1:A:272:ARG:HG2	1.71	0.55
1:A:230:VAL:HG13	1:A:292:PHE:CE2	2.33	0.55
1:A:110:PRO:O	1:A:113:ALA:N	2.39	0.55
1:A:384:ASP:HB2	1:C:321:LYS:HZ1	1.67	0.55
1:C:103:LEU:O	1:C:107:ARG:HG3	2.07	0.55
1:A:29:LEU:HD21	1:A:115:GLU:CD	2.27	0.55
1:A:123:ILE:HD11	1:B:276:TRP:CZ3	2.42	0.55
1:C:186:LEU:H	1:C:220:MET:HE1	1.72	0.55
1:A:384:ASP:HB2	1:C:321:LYS:HZ2	1.69	0.55
1:C:39:SER:H	1:C:42:GLU:CD	2.11	0.54
1:A:18:LEU:HD11	1:A:57:ARG:HG2	1.89	0.54
1:C:189:GLU:HA	1:C:193:GLN:OE1	2.07	0.54
1:C:239:TYR:CD1	1:C:239:TYR:N	2.73	0.54
1:A:254:LYS:HE2	2:A:997:YE1:OAL	2.08	0.54
1:A:425:VAL:O	1:A:426:ILE:CB	2.55	0.54
1:A:169:LEU:HD12	1:A:170:GLU:N	2.23	0.54
1:C:172:ARG:HG2	1:C:173:ASP:OD2	2.08	0.54
1:A:354:ALA:HB1	1:A:366:VAL:HG11	1.90	0.54
1:C:182:ARG:NH1	1:C:185:ARG:CD	2.62	0.54
1:C:295:GLY:O	1:C:299:GLN:HG3	2.08	0.54
1:A:236:ASN:HA	2:A:997:YE1:N1A	2.23	0.53
1:A:27:LYS:O	1:A:28:LEU:C	2.45	0.53
1:C:317:LEU:O	1:C:319:ALA:N	2.42	0.53
2:B:998:YE1:O10	2:B:998:YE1:C8A	2.57	0.53
1:A:39:SER:C	1:A:42:GLU:N	2.61	0.53
1:A:372:LEU:O	1:A:376:ILE:HG13	2.08	0.53
1:B:183:ASP:HB2	1:B:221:SER:CB	2.38	0.53
1:B:214:LEU:HD23	1:B:214:LEU:O	2.08	0.53
1:A:176:ALA:HB2	1:A:210:VAL:HG11	1.90	0.53
1:A:101:GLN:O	1:A:104:ALA:HB3	2.08	0.53
1:C:281:ILE:CG2	1:C:281:ILE:O	2.57	0.53
1:A:219:VAL:HG13	1:A:228:LYS:O	2.09	0.53
1:B:226:ARG:HG3	1:B:226:ARG:NH1	2.24	0.53
1:B:239:TYR:HB3	1:B:244:GLY:HA3	1.90	0.53
1:A:238:LYS:O	1:A:242:GLN:CG	2.54	0.53
1:B:197:MET:O	1:B:201:VAL:HG23	2.08	0.53

*Continued on next page...*

*Continued from previous page...*

Atom-1	Atom-2	Distance(Å)	Clash(Å)
1:A:222:HIS:CE1	1:A:223:PRO:HG2	2.44	0.53
1:A:343:ARG:NH2	1:B:399:ASP:OD2	2.30	0.53
1:A:231:PHE:CD2	1:A:293:ALA:HB2	2.44	0.53
1:C:186:LEU:CD1	1:C:220:MET:CE	2.87	0.53
1:B:139:LEU:HD12	1:B:406:ARG:HG3	1.91	0.52
1:A:230:VAL:HG13	1:A:292:PHE:CD2	2.44	0.52
2:B:998:YE1:O10	2:B:998:YE1:HC8	2.09	0.52
1:A:321:LYS:NZ	1:B:384:ASP:HB2	2.24	0.52
1:A:189:GLU:CB	1:A:235:ILE:HA	2.38	0.52
1:A:235:ILE:HD11	1:A:245:ILE:HG21	1.90	0.52
1:A:103:LEU:HD11	1:A:121:GLN:NE2	2.23	0.52
1:A:183:ASP:HA	1:A:220:MET:HE1	1.92	0.52
1:C:250:PHE:O	1:C:254:LYS:HB2	2.10	0.52
1:B:130:ARG:HG2	1:B:130:ARG:NH1	2.22	0.52
1:A:426:ILE:O	1:A:426:ILE:CG2	2.56	0.52
1:B:388:VAL:CG1	1:B:388:VAL:O	2.54	0.52
1:C:316:SER:OG	1:C:318:PRO:HD3	2.10	0.52
1:B:54:ARG:NH1	1:B:119:ILE:HD12	2.25	0.52
1:A:324:ILE:HG12	3:A:3:OXY:O1	2.10	0.52
1:A:421:TYR:O	1:A:422:GLY:C	2.48	0.52
1:B:234:GLY:HA3	2:B:998:YE1:HPN4	1.75	0.52
1:B:196:ASP:N	1:B:196:ASP:OD1	2.42	0.52
1:C:201:VAL:HG21	1:C:258:TYR:HB2	1.92	0.52
1:A:340:ARG:NH2	1:B:304:PHE:O	2.42	0.52
1:B:180:MET:SD	1:B:215:LEU:HD11	2.50	0.52
1:B:185:ARG:HG3	1:B:188:ALA:H	1.75	0.52
1:A:419:ARG:HH12	1:B:386:ASP:CB	2.23	0.52
1:A:331:LEU:HD13	1:A:408:TYR:HB2	1.92	0.52
4:A:1011:HOH:O	1:C:415:MET:HE1	2.10	0.52
1:A:337:ALA:HB1	1:A:341:VAL:CG1	2.35	0.52
1:A:275:TRP:O	1:A:276:TRP:C	2.48	0.52
1:C:263:VAL:HG23	1:C:303:VAL:CG1	2.39	0.52
1:C:148:ARG:O	1:C:152:LEU:HG	2.10	0.52
1:C:353:TRP:O	1:C:356:GLU:HG2	2.10	0.52
1:C:27:LYS:C	1:C:29:LEU:H	2.13	0.52
1:C:186:LEU:HD12	1:C:220:MET:CE	2.39	0.51
1:C:263:VAL:HG12	1:C:264:ARG:HG3	1.92	0.51
1:A:111:GLN:HE21	1:A:426:ILE:CG1	2.23	0.51
2:C:999:YE1:O2'	2:C:999:YE1:O9A	2.23	0.51
1:C:340:ARG:O	1:C:344:GLN:HG3	2.11	0.51
1:C:417:ALA:O	1:C:420:LEU:HB2	2.10	0.51
1:C:272:ARG:O	1:C:272:ARG:HG2	2.08	0.51

*Continued on next page...*

*Continued from previous page...*

Atom-1	Atom-2	Distance(Å)	Clash(Å)
1:C:190:ASP:O	1:C:192:GLN:N	2.43	0.51
1:B:235:ILE:HD11	1:B:245:ILE:CD1	2.38	0.51
1:A:106:GLU:OE2	1:A:114:LYS:HB3	2.10	0.51
1:A:275:TRP:O	1:A:277:HIS:N	2.44	0.51
1:B:178:LEU:HD13	1:B:285:TRP:HZ3	1.75	0.51
1:A:254:LYS:HZ2	1:A:259:ILE:HD11	1.74	0.51
1:B:425:VAL:HG12	1:B:426:ILE:N	2.24	0.51
1:B:343:ARG:HG3	1:B:343:ARG:NH1	2.24	0.51
1:B:327:GLY:C	1:B:329:ALA:H	2.14	0.51
1:B:167:VAL:CG1	1:B:168:HIS:N	2.67	0.51
1:C:82:LEU:HD11	1:C:256:LEU:HD12	1.92	0.51
1:B:309:ALA:CB	1:B:363:VAL:HG11	2.40	0.51
1:B:106:GLU:O	1:B:114:LYS:HE3	2.10	0.51
1:B:335:ARG:NH2	1:B:400:GLU:OE1	2.38	0.51
1:B:333:LEU:CD2	1:B:342:SER:HA	2.41	0.51
1:A:394:MET:HE2	1:C:412:PHE:HA	1.93	0.51
1:B:189:GLU:O	1:B:236:ASN:HB2	2.11	0.51
1:C:214:LEU:HD12	1:C:286:VAL:O	2.11	0.51
1:B:223:PRO:HA	1:B:226:ARG:CG	2.39	0.51
1:B:235:ILE:CD1	1:B:250:PHE:CE2	2.90	0.51
1:C:191:GLY:CA	1:C:250:PHE:HD1	2.13	0.51
1:C:337:ALA:O	1:C:341:VAL:HB	2.11	0.51
1:C:156:PHE:CD1	1:C:162:VAL:HG23	2.46	0.51
1:B:186:LEU:HA	1:B:220:MET:HE3	1.93	0.51
1:A:275:TRP:NE1	1:A:279:PRO:HA	2.25	0.51
1:A:314:TYR:CD2	1:A:351:ARG:HD2	2.45	0.51
1:C:266:VAL:CG2	1:C:281:ILE:HG21	2.34	0.51
1:A:108:SER:C	1:A:109:LEU:HD23	2.32	0.51
1:A:240:LEU:HA	1:A:245:ILE:HG12	1.93	0.51
1:B:377:GLU:HA	1:B:380:LEU:HD12	1.91	0.51
1:B:424:ASP:CG	1:B:425:VAL:H	2.15	0.51
1:C:139:LEU:HD21	1:C:256:LEU:HD22	1.93	0.51
1:C:31:THR:OG1	1:C:32:LEU:HD13	2.10	0.51
1:B:219:VAL:HA	1:B:229:ARG:HA	1.93	0.51
1:A:239:TYR:HA	1:A:242:GLN:HG3	1.93	0.50
1:C:235:ILE:HB	2:C:999:YE1:CAE	2.41	0.50
1:C:303:VAL:O	1:C:303:VAL:HG12	2.10	0.50
1:A:186:LEU:HB3	1:A:233:ALA:HB2	1.93	0.50
1:B:186:LEU:HD12	1:B:230:VAL:HG11	1.94	0.50
1:C:263:VAL:HG23	1:C:303:VAL:HG13	1.94	0.50
1:B:269:ASN:C	1:B:271:ASP:OD1	2.50	0.50
1:C:70:ASP:OD1	1:C:75:HIS:HA	2.12	0.50

*Continued on next page...*

*Continued from previous page...*

Atom-1	Atom-2	Distance(Å)	Clash(Å)
1:C:15:TRP:O	1:C:18:LEU:HB3	2.12	0.50
1:A:58:VAL:HG12	1:A:62:ASP:OD2	2.11	0.50
1:A:40:SER:CA	1:A:42:GLU:H	2.24	0.50
1:C:101:GLN:O	1:C:104:ALA:HB3	2.12	0.50
1:C:106:GLU:OE1	1:C:114:LYS:HB3	2.12	0.50
1:C:111:GLN:CG	1:C:243:GLY:HA2	2.24	0.50
1:A:43:ARG:O	1:A:47:ALA:N	2.43	0.50
1:C:58:VAL:HG22	1:C:123:ILE:HG23	1.93	0.50
1:C:58:VAL:HG12	1:C:62:ASP:OD2	2.11	0.50
1:A:331:LEU:HD13	1:A:408:TYR:CB	2.42	0.50
1:A:32:LEU:HB3	1:A:33:PRO:HD2	1.94	0.50
1:B:111:GLN:O	1:B:112:ALA:HB3	2.11	0.50
1:A:98:PRO:HG2	1:A:117:HIS:HB3	1.94	0.50
1:B:98:PRO:HD3	1:B:120:ASP:HB2	1.93	0.50
1:B:98:PRO:CG	1:B:117:HIS:HB3	2.42	0.49
1:C:269:ASN:O	1:C:271:ASP:CG	2.50	0.49
1:C:46:ILE:O	1:C:49:ALA:HB3	2.11	0.49
1:A:331:LEU:HA	1:B:398:ALA:CB	2.43	0.49
1:A:207:ASP:C	1:A:209:GLY:H	2.15	0.49
1:C:315:PHE:N	1:C:315:PHE:CD1	2.80	0.49
1:B:239:TYR:O	1:B:243:GLY:N	2.36	0.49
1:B:337:ALA:O	1:B:341:VAL:HG21	2.10	0.49
1:B:272:ARG:HB2	1:B:273:PRO:CD	2.42	0.49
1:A:213:GLY:HA3	1:A:285:TRP:CE3	2.47	0.49
1:B:264:ARG:HH11	1:B:264:ARG:HG2	1.77	0.49
1:A:230:VAL:HG21	1:A:292:PHE:CZ	2.47	0.49
1:A:38:ARG:HG3	1:A:38:ARG:NH1	2.14	0.49
1:C:352:ILE:HG21	1:C:359:ALA:HA	1.93	0.49
1:A:167:VAL:CG1	1:A:168:HIS:N	2.75	0.49
1:B:272:ARG:HG3	1:B:272:ARG:NH1	2.27	0.49
1:B:11:THR:C	1:B:13:GLY:N	2.66	0.49
1:B:221:SER:O	1:B:226:ARG:NE	2.45	0.49
1:A:207:ASP:OD1	1:A:209:GLY:N	2.42	0.49
1:A:110:PRO:CG	1:A:113:ALA:HB3	2.32	0.49
1:B:214:LEU:C	1:B:214:LEU:CD2	2.80	0.49
1:C:12:ASP:CG	1:C:13:GLY:N	2.65	0.49
1:B:419:ARG:NH2	1:B:424:ASP:OD2	2.46	0.49
1:A:264:ARG:NH1	1:A:264:ARG:HG2	2.25	0.49
1:A:176:ALA:HB2	1:A:210:VAL:CG1	2.43	0.49
1:A:111:GLN:O	1:A:114:LYS:HG3	2.13	0.48
1:B:424:ASP:CG	1:B:425:VAL:N	2.66	0.48
1:C:197:MET:O	1:C:201:VAL:HG23	2.13	0.48

*Continued on next page...*

*Continued from previous page...*

Atom-1	Atom-2	Distance(Å)	Clash(Å)
1:B:284:PRO:HA	1:B:305:ASP:OD2	2.13	0.48
1:A:66:ASP:OD1	1:A:133:LEU:HB2	2.14	0.48
1:B:183:ASP:HB2	1:B:221:SER:H	1.73	0.48
1:C:236:ASN:HA	2:C:999:YE1:N1A	2.27	0.48
1:B:343:ARG:O	1:B:347:LEU:HB2	2.13	0.48
1:A:251:LEU:HD13	1:A:416:GLN:CG	2.44	0.48
1:A:29:LEU:CD1	1:A:115:GLU:HG3	2.41	0.48
1:A:198:GLU:HA	1:A:258:TYR:HB3	1.94	0.48
1:A:235:ILE:HB	2:A:997:YE1:HAE	1.94	0.48
1:A:384:ASP:H	1:C:321:LYS:NZ	2.11	0.48
1:C:46:ILE:HG23	1:C:47:ALA:N	2.28	0.48
1:A:308:LEU:N	1:A:308:LEU:HD23	2.25	0.48
1:C:79:HIS:CD2	1:C:144:ARG:HD2	2.49	0.48
1:A:98:PRO:HD3	1:A:120:ASP:HB2	1.96	0.48
1:C:139:LEU:CD2	1:C:256:LEU:HD22	2.43	0.48
1:B:58:VAL:HG12	1:B:62:ASP:OD2	2.14	0.48
1:A:189:GLU:HB3	1:A:250:PHE:CZ	2.40	0.48
1:A:339:PRO:O	1:A:343:ARG:HG3	2.14	0.48
1:A:171:ARG:HH11	1:A:171:ARG:HG2	1.79	0.48
1:B:271:ASP:OD1	1:B:271:ASP:N	2.36	0.48
1:A:105:VAL:O	1:A:109:LEU:HG	2.14	0.48
1:A:237:LEU:O	1:A:238:LYS:C	2.52	0.48
1:B:415:MET:O	1:B:419:ARG:HG2	2.14	0.48
1:B:182:ARG:HD2	1:B:184:ASP:OD1	2.13	0.48
1:A:251:LEU:HD13	1:A:416:GLN:HG2	1.96	0.48
1:A:296:GLY:O	1:A:300:LEU:HD22	2.14	0.47
1:C:215:LEU:HD23	1:C:304:PHE:CZ	2.49	0.47
1:B:179:THR:HA	1:B:216:ARG:O	2.13	0.47
1:C:39:SER:O	1:C:42:GLU:N	2.30	0.47
1:B:238:LYS:O	1:B:242:GLN:HG3	2.14	0.47
1:B:157:VAL:HA	1:B:171:ARG:HH22	1.79	0.47
1:B:343:ARG:HG2	1:C:395:LEU:HD13	1.96	0.47
1:B:333:LEU:HD23	1:B:342:SER:HA	1.97	0.47
1:A:114:LYS:HD3	1:A:421:TYR:HE1	1.79	0.47
1:C:376:ILE:O	1:C:379:SER:HB3	2.15	0.47
1:A:134:ALA:O	1:A:135:GLY:C	2.52	0.47
1:C:12:ASP:O	1:C:13:GLY:C	2.52	0.47
1:A:25:VAL:HG22	1:A:49:ALA:HB1	1.95	0.47
1:C:184:ASP:OD2	1:C:185:ARG:NE	2.43	0.47
1:C:236:ASN:OD1	1:C:238:LYS:HB2	2.15	0.47
1:B:287:ALA:HB2	1:B:304:PHE:CE2	2.50	0.47
1:B:262:LEU:O	1:B:392:ARG:NH2	2.42	0.47

*Continued on next page...*



*Continued from previous page...*

Atom-1	Atom-2	Distance(Å)	Clash(Å)
1:B:315:PHE:CZ	1:B:363:VAL:HG21	2.49	0.47
1:B:309:ALA:O	1:B:366:VAL:HA	2.15	0.47
1:A:31:THR:OG1	1:A:32:LEU:N	2.47	0.47
1:C:43:ARG:O	1:C:46:ILE:HG22	2.14	0.47
1:A:130:ARG:HG2	1:A:130:ARG:HH11	1.79	0.47
1:C:335:ARG:NH2	1:C:400:GLU:HB2	2.30	0.47
1:A:231:PHE:HD2	1:A:293:ALA:HB2	1.79	0.47
1:B:57:ARG:HD2	1:B:120:ASP:OD1	2.15	0.47
1:B:116:GLY:HA2	1:B:421:TYR:CE1	2.50	0.47
1:C:27:LYS:C	1:C:29:LEU:N	2.69	0.47
1:A:109:LEU:CB	1:A:110:PRO:CD	2.93	0.47
1:A:343:ARG:HG2	1:B:395:LEU:HD13	1.96	0.47
1:A:241:SER:C	1:A:243:GLY:N	2.69	0.47
1:B:269:ASN:O	1:B:271:ASP:OD1	2.31	0.47
1:A:287:ALA:HB2	1:A:304:PHE:CZ	2.50	0.46
1:C:343:ARG:HB3	1:C:347:LEU:HD12	1.96	0.46
1:A:156:PHE:CE1	1:A:169:LEU:HG	2.50	0.46
1:C:352:ILE:N	1:C:352:ILE:HD12	2.29	0.46
1:C:126:ARG:O	1:C:130:ARG:HG3	2.16	0.46
1:B:285:TRP:O	1:B:305:ASP:HB2	2.15	0.46
1:B:347:LEU:HD22	1:C:388:VAL:HG13	1.97	0.46
1:C:112:ALA:HA	1:C:426:ILE:HG21	1.96	0.46
2:A:997:YE1:CAE	2:A:997:YE1:OAD	2.62	0.46
1:A:388:VAL:O	1:A:392:ARG:HB2	2.16	0.46
1:C:130:ARG:CG	1:C:130:ARG:HH11	2.28	0.46
1:A:367:VAL:HG22	1:A:371:GLU:HB2	1.97	0.46
1:B:397:LEU:O	1:B:397:LEU:HD23	2.16	0.46
1:A:240:LEU:HB2	1:A:245:ILE:CG1	2.46	0.46
1:A:38:ARG:HA	1:A:38:ARG:HD3	1.53	0.46
1:A:311:SER:HA	1:A:366:VAL:CG1	2.46	0.46
1:B:264:ARG:HG2	1:B:264:ARG:NH1	2.31	0.46
1:B:70:ASP:OD1	1:B:75:HIS:HA	2.15	0.46
1:B:419:ARG:HH22	1:B:424:ASP:CG	2.19	0.46
1:C:416:GLN:O	1:C:417:ALA:C	2.54	0.46
1:A:324:ILE:HB	1:A:325:ILE:H	1.56	0.46
1:B:192:GLN:NE2	1:B:195:ASP:HB3	2.31	0.46
1:A:159:THR:HG22	1:A:161:GLU:N	2.31	0.46
1:A:419:ARG:NH1	1:B:386:ASP:HB3	2.31	0.46
1:B:214:LEU:HD12	1:B:380:LEU:CD2	2.36	0.45
1:B:64:HIS:O	1:B:68:VAL:HG23	2.16	0.45
1:B:286:VAL:HG13	1:B:308:LEU:HD23	1.98	0.45
1:A:241:SER:C	1:A:243:GLY:H	2.19	0.45

*Continued on next page...*



*Continued from previous page...*

Atom-1	Atom-2	Distance(Å)	Clash(Å)
1:A:254:LYS:HE2	2:A:997:YE1:CAJ	2.45	0.45
1:C:186:LEU:HD13	1:C:220:MET:HE2	1.97	0.45
1:C:308:LEU:CD2	1:C:365:GLU:OE1	2.64	0.45
1:C:38:ARG:HB3	1:C:42:GLU:HB3	1.98	0.45
1:A:341:VAL:O	1:A:344:GLN:HB2	2.17	0.45
1:C:239:TYR:N	1:C:239:TYR:HD1	2.14	0.45
1:A:298:ALA:HA	1:A:301:LEU:HG	1.99	0.45
1:A:157:VAL:HA	1:A:171:ARG:HH21	1.82	0.45
1:A:156:PHE:O	1:A:171:ARG:NH2	2.49	0.45
1:B:178:LEU:HD13	1:B:285:TRP:CZ3	2.51	0.45
1:C:153:LEU:HB3	1:C:154:PRO:CD	2.46	0.45
1:A:303:VAL:O	1:A:303:VAL:CG1	2.65	0.45
1:A:222:HIS:CD2	1:A:223:PRO:HD2	2.50	0.45
1:C:118:GLU:HB2	1:C:421:TYR:HE2	1.81	0.45
1:C:222:HIS:CE1	1:C:223:PRO:HG2	2.52	0.45
1:B:183:ASP:OD2	1:B:221:SER:CB	2.62	0.45
1:B:111:GLN:HB3	1:B:426:ILE:HD11	1.97	0.45
1:A:295:GLY:HA3	2:A:997:YE1:HC21	1.98	0.45
1:A:319:ALA:HB3	4:A:1028:HOH:O	2.15	0.45
1:A:207:ASP:C	1:A:209:GLY:N	2.70	0.45
1:C:110:PRO:O	1:C:112:ALA:N	2.50	0.45
1:A:291:GLY:O	1:A:313:ALA:CB	2.65	0.45
1:B:222:HIS:C	1:B:226:ARG:HG2	2.37	0.45
1:A:189:GLU:HG3	1:A:234:GLY:O	2.17	0.45
1:A:172:ARG:HB3	1:A:177:ARG:HE	1.82	0.45
1:C:412:PHE:O	1:C:413:ALA:C	2.55	0.45
1:A:289:VAL:HB	1:A:309:ALA:CB	2.47	0.45
1:B:337:ALA:O	1:B:341:VAL:HG23	2.16	0.45
1:B:11:THR:O	1:B:13:GLY:N	2.50	0.45
1:C:58:VAL:HG22	1:C:123:ILE:CG2	2.47	0.45
1:A:167:VAL:HG12	1:A:168:HIS:N	2.30	0.45
1:B:222:HIS:CD2	2:B:998:YE1:H4'	2.52	0.44
1:B:237:LEU:N	2:B:998:YE1:N1A	2.63	0.44
1:A:318:PRO:HG2	1:A:319:ALA:H	1.81	0.44
1:A:219:VAL:HA	1:A:229:ARG:HB3	1.99	0.44
1:B:350:ARG:NH2	1:B:358:GLU:OE1	2.46	0.44
1:A:21:ALA:HB2	1:A:56:LEU:HD12	1.98	0.44
1:C:337:ALA:CB	1:C:361:LEU:HD13	2.47	0.44
1:C:194:VAL:HG12	1:C:194:VAL:O	2.16	0.44
1:B:233:ALA:HB2	1:B:292:PHE:HE2	1.82	0.44
1:C:64:HIS:O	1:C:68:VAL:HG23	2.17	0.44
1:C:182:ARG:C	1:C:184:ASP:N	2.70	0.44

*Continued on next page...*

*Continued from previous page...*

Atom-1	Atom-2	Distance(Å)	Clash(Å)
1:A:106:GLU:C	1:A:108:SER:H	2.21	0.44
1:B:115:GLU:HB2	1:B:117:HIS:CE1	2.52	0.44
1:B:150:LEU:HA	1:B:150:LEU:HD23	1.85	0.44
1:A:111:GLN:C	1:A:113:ALA:H	2.20	0.44
1:A:220:MET:HA	1:A:220:MET:CE	2.47	0.44
1:C:363:VAL:HG12	1:C:364:ASP:N	2.32	0.44
1:B:16:ALA:O	1:B:20:GLU:CB	2.66	0.44
1:A:125:LEU:HD13	1:A:252:MET:HG3	2.00	0.44
1:A:384:ASP:H	1:C:321:LYS:HZ2	1.66	0.44
1:A:156:PHE:HD1	1:A:162:VAL:HG23	1.82	0.44
1:A:296:GLY:O	1:A:300:LEU:CD2	2.65	0.44
1:C:319:ALA:HB1	1:C:323:GLY:HA3	2.00	0.44
1:A:189:GLU:CG	1:A:235:ILE:HA	2.48	0.44
1:A:236:ASN:ND2	2:A:997:YE1:HC2	2.33	0.44
1:C:377:GLU:C	1:C:379:SER:N	2.71	0.44
1:A:70:ASP:OD1	1:A:75:HIS:HA	2.17	0.44
1:C:343:ARG:O	1:C:347:LEU:HB2	2.17	0.43
1:A:11:THR:O	1:A:12:ASP:C	2.57	0.43
1:A:337:ALA:CB	1:A:341:VAL:CG1	2.91	0.43
1:C:277:HIS:CE1	1:C:278:SER:HG	2.31	0.43
2:B:998:YE1:CAE	2:B:998:YE1:OAD	2.62	0.43
1:A:117:HIS:O	1:A:120:ASP:HB2	2.17	0.43
1:C:130:ARG:NH1	1:C:130:ARG:HG2	2.29	0.43
1:A:148:ARG:HD3	1:A:199:THR:OG1	2.18	0.43
1:A:20:GLU:O	1:A:23:ALA:HB3	2.19	0.43
1:C:184:ASP:CG	1:C:185:ARG:HE	2.20	0.43
1:A:43:ARG:C	1:A:46:ILE:HG22	2.38	0.43
1:C:124:PHE:O	1:C:126:ARG:N	2.52	0.43
1:A:416:GLN:HA	1:A:416:GLN:OE1	2.19	0.43
1:A:194:VAL:HG23	1:A:250:PHE:CE1	2.53	0.43
1:A:242:GLN:H	1:A:242:GLN:HG2	1.41	0.43
1:C:259:ILE:HG12	1:C:300:LEU:HD23	2.01	0.43
1:A:64:HIS:O	1:A:68:VAL:HG23	2.18	0.43
1:B:237:LEU:HD11	2:B:998:YE1:HC71	1.99	0.43
1:A:367:VAL:HG12	1:A:372:LEU:HD13	1.98	0.43
1:B:223:PRO:HA	1:B:226:ARG:NH1	2.34	0.43
1:A:242:GLN:HB2	1:A:243:GLY:O	2.18	0.43
1:A:185:ARG:HG3	1:A:188:ALA:H	1.84	0.43
1:B:99:THR:OG1	1:B:102:GLN:HG3	2.19	0.43
1:B:326:PRO:HD2	1:C:391:ASN:OD1	2.18	0.43
1:B:205:LEU:CD1	1:B:266:VAL:HG13	2.49	0.43
1:B:250:PHE:O	1:B:254:LYS:HB3	2.18	0.42

*Continued on next page...*

*Continued from previous page...*

Atom-1	Atom-2	Distance(Å)	Clash(Å)
2:C:999:YE1:CAE	2:C:999:YE1:OAD	2.62	0.42
1:A:207:ASP:O	1:A:209:GLY:N	2.52	0.42
1:B:238:LYS:O	1:B:242:GLN:CG	2.67	0.42
1:B:331:LEU:HB2	1:B:408:TYR:CD1	2.53	0.42
1:A:79:HIS:CD2	1:A:144:ARG:HD2	2.53	0.42
1:C:99:THR:HG1	1:C:102:GLN:HG3	1.80	0.42
1:C:106:GLU:HA	1:C:106:GLU:OE1	2.18	0.42
1:C:111:GLN:OE1	1:C:421:TYR:CE1	2.72	0.42
1:A:343:ARG:NH1	1:A:343:ARG:HG3	2.29	0.42
1:C:109:LEU:HB3	1:C:110:PRO:HD2	2.01	0.42
1:B:103:LEU:HD11	1:B:121:GLN:HE22	1.84	0.42
1:A:111:GLN:O	1:A:113:ALA:N	2.52	0.42
1:A:424:ASP:CG	1:A:425:VAL:N	2.73	0.42
1:A:318:PRO:O	1:A:319:ALA:C	2.57	0.42
1:A:350:ARG:HG2	1:A:351:ARG:N	2.33	0.42
1:A:66:ASP:CG	1:A:133:LEU:HD12	2.40	0.42
1:B:148:ARG:HD3	1:B:199:THR:HG21	1.99	0.42
1:A:177:ARG:HG2	1:A:214:LEU:HD23	2.00	0.42
1:A:374:ALA:HB1	1:A:378:ARG:NH1	2.32	0.42
1:C:316:SER:HB3	1:C:351:ARG:HB3	2.00	0.42
1:A:81:ARG:HB2	1:A:84:GLU:OE1	2.19	0.42
1:B:174:GLY:HA2	1:B:209:GLY:O	2.19	0.42
1:A:235:ILE:N	2:A:997:YE1:HC22	2.34	0.42
1:A:214:LEU:HD22	1:A:380:LEU:HD11	2.01	0.42
1:B:340:ARG:O	1:B:344:GLN:HG3	2.20	0.42
1:C:414:LEU:O	1:C:415:MET:C	2.57	0.42
1:C:186:LEU:HA	1:C:220:MET:CE	2.38	0.42
1:A:388:VAL:HG13	1:C:347:LEU:HD22	2.00	0.42
1:A:247:LEU:HB2	1:A:420:LEU:HD23	2.02	0.42
1:C:170:GLU:OE2	1:C:172:ARG:NH1	2.52	0.42
1:C:215:LEU:HD23	1:C:304:PHE:HZ	1.84	0.42
1:A:144:ARG:NH2	1:A:269:ASN:OD1	2.53	0.42
1:B:235:ILE:HD12	1:B:250:PHE:HE2	1.83	0.42
1:A:331:LEU:HA	1:B:398:ALA:HB1	2.02	0.42
1:B:205:LEU:HD12	1:B:266:VAL:HG13	2.00	0.42
1:C:309:ALA:O	1:C:366:VAL:HA	2.19	0.42
1:A:340:ARG:O	1:A:344:GLN:HG3	2.19	0.42
1:A:419:ARG:HD3	1:B:390:ALA:CB	2.49	0.42
1:A:183:ASP:CA	1:A:220:MET:HE1	2.49	0.42
1:A:240:LEU:HB2	1:A:245:ILE:HG13	2.02	0.42
1:A:311:SER:HA	1:A:366:VAL:HG12	2.01	0.42
1:B:416:GLN:O	1:B:420:LEU:HD13	2.20	0.42

*Continued on next page...*

*Continued from previous page...*

Atom-1	Atom-2	Distance(Å)	Clash(Å)
1:B:54:ARG:NH2	1:B:116:GLY:O	2.53	0.42
1:A:330:ASN:HB2	1:A:408:TYR:OH	2.20	0.42
1:A:43:ARG:C	1:A:45:GLU:N	2.73	0.41
1:B:172:ARG:O	1:B:173:ASP:CB	2.64	0.41
1:C:378:ARG:HG2	1:C:382:ARG:NH1	2.35	0.41
1:B:254:LYS:HG3	1:B:259:ILE:CD1	2.50	0.41
1:A:18:LEU:CD1	1:A:57:ARG:HG2	2.49	0.41
1:A:75:HIS:O	1:A:76:ARG:C	2.59	0.41
1:B:223:PRO:HD3	1:B:226:ARG:NH2	2.35	0.41
1:B:239:TYR:HB3	1:B:244:GLY:CA	2.50	0.41
1:B:377:GLU:O	1:B:380:LEU:N	2.52	0.41
1:B:425:VAL:HG12	1:B:426:ILE:HG13	2.02	0.41
1:C:27:LYS:O	1:C:29:LEU:N	2.54	0.41
1:B:231:PHE:HB3	1:B:292:PHE:O	2.20	0.41
1:C:378:ARG:HG2	1:C:382:ARG:HH12	1.85	0.41
1:B:162:VAL:HG21	1:B:203:LEU:CD1	2.50	0.41
1:A:384:ASP:N	1:C:321:LYS:HZ2	2.18	0.41
1:B:326:PRO:HG3	1:B:346:ILE:HG23	2.02	0.41
1:C:119:ILE:HA	1:C:417:ALA:HB1	2.01	0.41
1:A:58:VAL:HG22	1:A:123:ILE:HG23	2.01	0.41
1:B:156:PHE:CD1	1:B:162:VAL:HG23	2.56	0.41
1:A:337:ALA:HB1	1:A:341:VAL:HG21	2.02	0.41
1:A:341:VAL:O	1:A:345:VAL:HG23	2.21	0.41
1:A:43:ARG:O	1:A:45:GLU:N	2.54	0.41
1:C:35:HIS:ND1	1:C:113:ALA:HA	2.36	0.41
1:A:247:LEU:O	1:A:252:MET:HG2	2.20	0.41
1:A:70:ASP:OD1	1:A:76:ARG:NH1	2.53	0.41
1:B:34:GLU:O	1:B:35:HIS:C	2.59	0.41
1:B:79:HIS:HD2	1:B:144:ARG:CZ	2.33	0.41
1:A:111:GLN:HB2	1:A:243:GLY:N	2.35	0.41
1:B:111:GLN:HB3	1:B:111:GLN:HE21	1.64	0.41
1:B:153:LEU:N	1:B:154:PRO:CD	2.84	0.41
1:C:111:GLN:HG2	1:C:243:GLY:CA	2.27	0.41
1:A:308:LEU:H	1:A:308:LEU:HD23	1.84	0.41
1:A:343:ARG:CG	1:A:343:ARG:HH11	2.31	0.41
1:C:198:GLU:CG	1:C:198:GLU:O	2.68	0.41
1:A:230:VAL:CG2	1:A:292:PHE:CZ	3.04	0.41
1:B:337:ALA:CB	1:B:341:VAL:HB	2.51	0.41
1:C:205:LEU:HD12	1:C:266:VAL:HG13	2.02	0.41
1:A:250:PHE:O	1:A:254:LYS:HB2	2.21	0.41
1:C:308:LEU:HD13	1:C:376:ILE:HG12	2.03	0.41
1:C:139:LEU:HA	1:C:139:LEU:HD23	1.93	0.41

*Continued on next page...*

Continued from previous page...

Atom-1	Atom-2	Distance(Å)	Clash(Å)
1:B:162:VAL:HG21	1:B:203:LEU:HD13	2.02	0.41
1:B:81:ARG:HB2	1:B:84:GLU:OE1	2.20	0.41
1:C:72:LEU:HD22	1:C:88:ALA:HB1	2.02	0.41
1:A:182:ARG:HB2	1:A:187:ASN:HA	2.03	0.41
1:C:310:SER:HA	1:C:367:VAL:O	2.21	0.41
1:B:18:LEU:HD11	1:B:57:ARG:HG2	2.03	0.41
1:C:317:LEU:N	1:C:318:PRO:HD3	2.36	0.40
1:C:119:ILE:O	1:C:123:ILE:HG13	2.21	0.40
1:C:251:LEU:HD13	1:C:416:GLN:CG	2.51	0.40
1:A:111:GLN:HE21	1:A:426:ILE:HG12	1.86	0.40
1:C:191:GLY:CA	1:C:250:PHE:CD1	2.96	0.40
1:A:288:ALA:HA	1:A:308:LEU:O	2.21	0.40
1:C:186:LEU:HD13	1:C:220:MET:CE	2.50	0.40
1:B:166:ALA:HB3	1:B:196:ASP:OD2	2.21	0.40
1:C:145:PRO:HD2	1:C:267:LEU:O	2.20	0.40
1:B:251:LEU:HA	1:B:251:LEU:HD23	1.83	0.40
1:C:222:HIS:ND1	1:C:224:ARG:N	2.65	0.40
1:C:350:ARG:CG	1:C:351:ARG:N	2.84	0.40
1:C:75:HIS:O	1:C:76:ARG:C	2.59	0.40
1:A:111:GLN:HG2	1:A:426:ILE:HD11	2.03	0.40
1:C:216:ARG:CG	1:C:217:GLY:N	2.84	0.40
1:B:119:ILE:O	1:B:123:ILE:HG13	2.22	0.40
1:A:140:ASP:O	1:A:144:ARG:HG3	2.20	0.40
1:C:187:ASN:O	1:C:188:ALA:C	2.60	0.40
1:A:188:ALA:HB1	1:A:236:ASN:HB2	2.04	0.40
1:B:218:GLY:HA2	1:B:229:ARG:NH1	2.36	0.40
1:B:387:ALA:C	1:B:389:LEU:H	2.23	0.40

There are no symmetry-related clashes.

## 5.3 Torsion angles

### 5.3.1 Protein backbone ⓘ

In the following table, the Percentiles column shows the percent Ramachandran outliers of the chain as a percentile score with respect to all X-ray entries followed by that with respect to entries of similar resolution. The Analysed column shows the number of residues for which the backbone conformation was analysed, and the total number of residues.

Mol	Chain	Analysed	Favoured	Allowed	Outliers	Percentiles
1	A	415/417 (100%)	350 (84%)	47 (11%)	18 (4%)	4 23

Continued on next page...

*Continued from previous page...*

Mol	Chain	Analysed	Favoured	Allowed	Outliers	Percentiles	
1	B	415/417 (100%)	363 (88%)	45 (11%)	7 (2%)	14	54
1	C	413/417 (99%)	339 (82%)	67 (16%)	7 (2%)	14	54
All	All	1243/1251 (99%)	1052 (85%)	159 (13%)	32 (3%)	8	39

All (32) Ramachandran outliers are listed below:

Mol	Chain	Res	Type
1	A	47	ALA
1	A	319	ALA
1	B	112	ALA
1	B	271	ASP
1	C	183	ASP
1	A	107	ARG
1	A	111	GLN
1	A	112	ALA
1	A	135	GLY
1	C	111	GLN
1	C	125	LEU
1	A	34	GLU
1	A	238	LYS
1	A	242	GLN
1	A	276	TRP
1	A	311	SER
1	A	318	PRO
1	A	423	HIS
1	B	12	ASP
1	B	378	ARG
1	C	15	TRP
1	B	425	VAL
1	B	319	ALA
1	C	371	GLU
1	A	385	GLY
1	B	341	VAL
1	C	270	ASP
1	A	425	VAL
1	A	244	GLY
1	A	245	ILE
1	A	324	ILE
1	C	98	PRO

### 5.3.2 Protein sidechains ⓘ

In the following table, the Percentiles column shows the percent sidechain outliers of the chain as a percentile score with respect to all X-ray entries followed by that with respect to entries of similar resolution. The Analysed column shows the number of residues for which the sidechain conformation was analysed, and the total number of residues.

Mol	Chain	Analysed	Rotameric	Outliers	Percentiles	
1	A	318/328 (97%)	302 (95%)	16 (5%)	34	77
1	B	327/328 (100%)	317 (97%)	10 (3%)	52	89
1	C	322/328 (98%)	309 (96%)	13 (4%)	42	84
All	All	967/984 (98%)	928 (96%)	39 (4%)	42	84

All (39) residues with a non-rotameric sidechain are listed below:

Mol	Chain	Res	Type
1	A	38	ARG
1	A	63	THR
1	A	102	GLN
1	A	186	LEU
1	A	242	GLN
1	A	271	ASP
1	A	308	LEU
1	A	311	SER
1	A	315	PHE
1	A	317	LEU
1	A	331	LEU
1	A	340	ARG
1	A	384	ASP
1	A	403	ASP
1	A	424	ASP
1	A	425	VAL
1	B	11	THR
1	B	63	THR
1	B	190	ASP
1	B	196	ASP
1	B	214	LEU
1	B	240	LEU
1	B	254	LYS
1	B	271	ASP
1	B	272	ARG
1	B	370	ASP
1	C	24	SER

*Continued on next page...*

*Continued from previous page...*

Mol	Chain	Res	Type
1	C	33	PRO
1	C	39	SER
1	C	63	THR
1	C	152	LEU
1	C	183	ASP
1	C	186	LEU
1	C	271	ASP
1	C	272	ARG
1	C	315	PHE
1	C	340	ARG
1	C	367	VAL
1	C	373	ASP

Some sidechains can be flipped to improve hydrogen bonding and reduce clashes. All (14) such sidechains are listed below:

Mol	Chain	Res	Type
1	A	100	GLN
1	A	111	GLN
1	A	121	GLN
1	A	168	HIS
1	B	79	HIS
1	B	102	GLN
1	B	111	GLN
1	B	121	GLN
1	B	168	HIS
1	B	423	HIS
1	C	79	HIS
1	C	102	GLN
1	C	299	GLN
1	C	416	GLN

### 5.3.3 RNA ⓘ

There are no RNA chains in this entry.

## 5.4 Non-standard residues in protein, DNA, RNA chains ⓘ

There are no non-standard protein/DNA/RNA residues in this entry.



## 5.5 Carbohydrates

There are no carbohydrates in this entry.

## 5.6 Ligand geometry

5 ligands are modelled in this entry.

In the following table, the Counts columns list the number of bonds (or angles) for which Mogul statistics could be retrieved, the number of bonds (or angles) that are observed in the model and the number of bonds (or angles) that are defined in the chemical component dictionary. The Link column lists molecule types, if any, to which the group is linked. The Z score for a bond length (or angle) is the number of standard deviations the observed value is removed from the expected value. A bond length (or angle) with  $|Z| > 2$  is considered an outlier worth inspection. RMSZ is the root-mean-square of all Z scores of the bond lengths (or angles).

Mol	Type	Chain	Res	Link	Bond lengths			Bond angles		
					Counts	RMSZ	$\# Z  > 2$	Counts	RMSZ	$\# Z  > 2$
3	OXY	A	3	-	1,1,1	1.24	0	0,0,0	0.00	-
2	YE1	A	997	-	62,62,62	1.70	9 (14%)	92,92,92	2.04	15 (16%)
2	YE1	B	998	-	62,62,62	1.71	9 (14%)	92,92,92	2.04	15 (16%)
3	OXY	C	2	-	1,1,1	1.26	0	0,0,0	0.00	-
2	YE1	C	999	-	62,62,62	1.71	8 (12%)	92,92,92	2.04	15 (16%)

In the following table, the Chirals column lists the number of chiral outliers, the number of chiral centers analysed, the number of these observed in the model and the number defined in the chemical component dictionary. Similar counts are reported in the Torsion and Rings columns. '-' means no outliers of that kind were identified.

Mol	Type	Chain	Res	Link	Chirals	Torsions	Rings
3	OXY	A	3	-	-	0/0/0/0	0/0/0/0
2	YE1	A	997	-	-	0/55/71/71	0/2/4/4
2	YE1	B	998	-	-	0/55/71/71	0/2/4/4
3	OXY	C	2	-	-	0/0/0/0	0/0/0/0
2	YE1	C	999	-	-	0/55/71/71	0/2/4/4

All (26) bond length outliers are listed below:

Mol	Chain	Res	Type	Atoms	Z	Observed(Å)	Ideal(Å)
2	C	999	YE1	OAD-CAB	8.75	1.42	1.23
2	B	998	YE1	OAD-CAB	8.73	1.42	1.23
2	A	997	YE1	OAD-CAB	8.72	1.42	1.23
2	C	999	YE1	C2P-NAA	-4.56	1.35	1.46
2	A	997	YE1	C2P-NAA	-4.54	1.35	1.46

*Continued on next page...*

*Continued from previous page...*

Mol	Chain	Res	Type	Atoms	Z	Observed(Å)	Ideal(Å)
2	B	998	YE1	C2P-NAA	-4.53	1.35	1.46
2	C	999	YE1	P1A-O3A	-3.39	1.53	1.59
2	B	998	YE1	P1A-O3A	-3.36	1.53	1.59
2	A	997	YE1	P1A-O3A	-3.33	1.53	1.59
2	B	998	YE1	C9P-N8P	3.23	1.40	1.33
2	C	999	YE1	C9P-N8P	3.19	1.40	1.33
2	A	997	YE1	C9P-N8P	3.17	1.40	1.33
2	A	997	YE1	CAB-NAA	3.03	1.40	1.33
2	B	998	YE1	CAB-NAA	3.03	1.40	1.33
2	C	999	YE1	CAB-NAA	3.01	1.40	1.33
2	C	999	YE1	C5P-N4P	3.01	1.40	1.33
2	B	998	YE1	C5P-N4P	2.96	1.40	1.33
2	A	997	YE1	C5P-N4P	2.95	1.40	1.33
2	B	998	YE1	C3P-N4P	-2.40	1.40	1.46
2	A	997	YE1	C3P-N4P	-2.37	1.40	1.46
2	C	999	YE1	C3P-N4P	-2.36	1.40	1.46
2	B	998	YE1	P3'-O3'	-2.13	1.53	1.59
2	A	997	YE1	P3'-O3'	-2.06	1.53	1.59
2	C	999	YE1	P3'-O3'	-2.06	1.53	1.59
2	B	998	YE1	C2A-N1A	2.05	1.38	1.33
2	A	997	YE1	C2A-N1A	2.01	1.37	1.33

All (45) bond angle outliers are listed below:

Mol	Chain	Res	Type	Atoms	Z	Observed(°)	Ideal(°)
2	B	998	YE1	C2P-NAA-CAB	-6.75	109.09	122.84
2	C	999	YE1	C2P-NAA-CAB	-6.73	109.13	122.84
2	A	997	YE1	C2P-NAA-CAB	-6.70	109.19	122.84
2	C	999	YE1	C3P-N4P-C5P	-6.57	109.46	122.84
2	B	998	YE1	C3P-N4P-C5P	-6.56	109.48	122.84
2	A	997	YE1	C3P-N4P-C5P	-6.55	109.51	122.84
2	A	997	YE1	O6A-P2A-O5A	-6.46	84.08	109.37
2	B	998	YE1	O6A-P2A-O5A	-6.45	84.12	109.37
2	C	999	YE1	O6A-P2A-O5A	-6.42	84.20	109.37
2	B	998	YE1	C6P-C7P-N8P	-6.38	98.13	111.87
2	A	997	YE1	C6P-C7P-N8P	-6.37	98.15	111.87
2	B	998	YE1	C7P-N8P-C9P	-6.35	109.53	122.57
2	C	999	YE1	C6P-C7P-N8P	-6.35	98.19	111.87
2	A	997	YE1	C7P-N8P-C9P	-6.34	109.55	122.57
2	C	999	YE1	C7P-N8P-C9P	-6.29	109.66	122.57
2	A	997	YE1	P3'-O3'-C3'	-5.97	109.38	121.96
2	B	998	YE1	P3'-O3'-C3'	-5.96	109.41	121.96

*Continued on next page...*

*Continued from previous page...*

Mol	Chain	Res	Type	Atoms	Z	Observed(°)	Ideal(°)
2	C	999	YE1	P3'-O3'-C3'	-5.95	109.43	121.96
2	A	997	YE1	C7P-C6P-C5P	-4.50	104.58	112.25
2	B	998	YE1	C7P-C6P-C5P	-4.48	104.62	112.25
2	C	999	YE1	C7P-C6P-C5P	-4.46	104.65	112.25
2	A	997	YE1	C11-C10-C9P	-3.32	109.51	112.73
2	C	999	YE1	C11-C10-C9P	-3.31	109.52	112.73
2	B	998	YE1	C11-C10-C9P	-3.29	109.54	112.73
2	A	997	YE1	C14-C11-C10	3.12	114.24	108.82
2	C	999	YE1	C14-C11-C10	3.12	114.23	108.82
2	B	998	YE1	C14-C11-C10	3.12	114.23	108.82
2	C	999	YE1	C2'-C1'-N9A	-2.76	106.18	113.27
2	B	998	YE1	C2'-C1'-N9A	-2.76	106.19	113.27
2	A	997	YE1	C2'-C1'-N9A	-2.76	106.19	113.27
2	B	998	YE1	C4A-C5A-N7A	2.71	111.84	109.52
2	C	999	YE1	C4A-C5A-N7A	2.68	111.81	109.52
2	A	997	YE1	C4A-C5A-N7A	2.63	111.78	109.52
2	C	999	YE1	O9P-C9P-N8P	-2.53	117.90	123.05
2	B	998	YE1	O9P-C9P-N8P	-2.51	117.95	123.05
2	A	997	YE1	O9P-C9P-N8P	-2.51	117.95	123.05
2	A	997	YE1	P2A-O6A-C12	-2.25	108.98	121.66
2	B	998	YE1	P2A-O6A-C12	-2.24	109.01	121.66
2	C	999	YE1	P2A-O6A-C12	-2.23	109.10	121.66
2	A	997	YE1	C13-C11-C12	-2.13	105.68	108.76
2	B	998	YE1	C13-C11-C12	-2.11	105.71	108.76
2	C	999	YE1	C13-C11-C12	-2.11	105.72	108.76
2	A	997	YE1	P2A-O3A-P1A	-2.10	125.52	131.68
2	B	998	YE1	P2A-O3A-P1A	-2.10	125.53	131.68
2	C	999	YE1	P2A-O3A-P1A	-2.09	125.56	131.68

There are no chirality outliers.

There are no torsion outliers.

There are no ring outliers.

## 5.7 Other polymers ⓘ

There are no such residues in this entry.

## 5.8 Polymer linkage issues

There are no chain breaks in this entry.

## 6 Fit of model and data ⓘ

### 6.1 Protein, DNA and RNA chains ⓘ

In the following table, the column labelled ‘#RSRZ> 2’ contains the number (and percentage) of RSRZ outliers, followed by percent RSRZ outliers for the chain as percentile scores relative to all X-ray entries and entries of similar resolution. The OWAB column contains the minimum, median, 95<sup>th</sup> percentile and maximum values of the occupancy-weighted average B-factor per residue. The column labelled ‘Q< 0.9’ lists the number of (and percentage) of residues with an average occupancy less than 0.9.

Mol	Chain	Analysed	<RSRZ>	#RSRZ>2	OWAB(Å <sup>2</sup> )	Q<0.9
1	A	417/417 (100%)	-0.06	2 (0%) 88 36	20, 41, 68, 77	0
1	B	417/417 (100%)	-0.11	0 100 100	24, 42, 63, 72	0
1	C	415/417 (99%)	-0.10	0 100 100	21, 43, 63, 74	0
All	All	1249/1251 (99%)	-0.09	2 (0%) 93 54	20, 42, 64, 77	0

All (2) RSRZ outliers are listed below:

Mol	Chain	Res	Type	RSRZ
1	A	223	PRO	2.4
1	A	426	ILE	2.0

### 6.2 Non-standard residues in protein, DNA, RNA chains ⓘ

There are no non-standard protein/DNA/RNA residues in this entry.

### 6.3 Carbohydrates ⓘ

There are no carbohydrates in this entry.

### 6.4 Ligands ⓘ

In the following table, the Atoms column lists the number of modelled atoms in the group and the number defined in the chemical component dictionary. LLDF column lists the quality of electron density of the group with respect to its neighbouring residues in protein, DNA or RNA chains. The B-factors column lists the minimum, median, 95<sup>th</sup> percentile and maximum values of B factors of atoms in the group. The column labelled ‘Q< 0.9’ lists the number of atoms with occupancy less than 0.9.

Mol	Type	Chain	Res	Atoms	RSR	LLDF	B-factors( $\text{\AA}^2$ )	Q<0.9
2	YE1	B	998	59/59	0.45	1.57	40,73,105,156	0
2	YE1	A	997	59/59	0.41	1.35	45,70,105,135	0
3	OXY	C	2	2/2	0.36	1.14	69,69,69,69	0
2	YE1	C	999	59/59	0.31	0.92	36,64,86,135	0
3	OXY	A	3	2/2	0.29	-0.18	69,69,69,70	0

## 6.5 Other polymers ⓘ

There are no such residues in this entry.