



Full wwPDB X-ray Structure Validation Report

Feb 26, 2014 – 11:46 PM GMT

PDB ID : 3PHZ
Title : Crystal Structure Analysis of Polyporus squamosus lectin bound to human-type influenza-binding epitope Neu5Aca2-6Galb1-4GlcNAc
Authors : Kadirvelraj, R.; Woods, R.J.
Deposited on : 2010-11-04
Resolution : 1.70 Å(reported)

This is a full wwPDB validation report for a publicly released PDB entry.
We welcome your comments at validation@mail.wwpdb.org
A user guide is available at <http://wwpdb.org/ValidationPDFNotes.html>

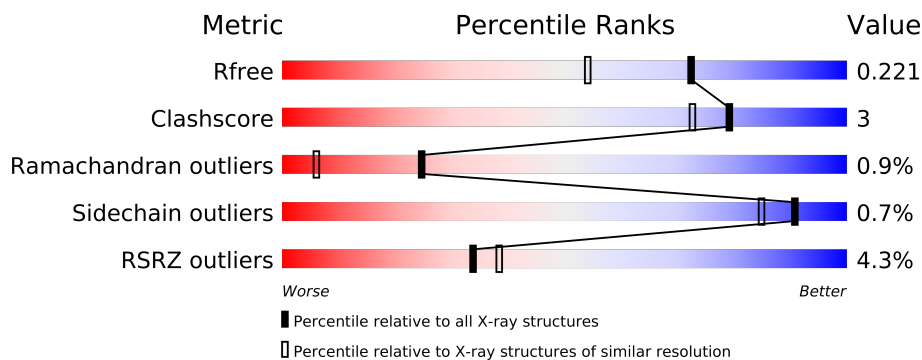
The following versions of software and data (see [references](#)) were used in the production of this report:

MolProbity : 4.02b-467
Mogul : 1.15 2013
Xtriage (Phenix) : dev-1323
EDS : stable22639
Percentile statistics : 21963
Refmac : 5.8.0049
CCP4 : 6.3.0 (Settle)
Ideal geometry (proteins) : Engh & Huber (2001)
Ideal geometry (DNA, RNA) : Parkinson et. al. (1996)
Validation Pipeline (wwPDB-VP) : stable22683

1 Overall quality at a glance

The reported resolution of this entry is 1.70 Å.

Percentile scores (ranging between 0-100) for global validation metrics of the entry are shown in the following graphic. The table shows the number of entries on which the scores are based.



Metric	Whole archive (#Entries)	Similar resolution (#Entries, resolution range(Å))
R_{free}	66092	2456 (1.70-1.70)
Clashscore	79885	2929 (1.70-1.70)
Ramachandran outliers	78287	2878 (1.70-1.70)
Sidechain outliers	78261	2878 (1.70-1.70)
RSRZ outliers	66119	2456 (1.70-1.70)

The table below summarises the geometric issues observed across the polymeric chains and their fit to the electron density. The red, orange, yellow and green segments on the lower bar indicate the fraction of residues that contain outliers for ≥ 3 , 2, 1 and 0 types of geometric quality criteria. The upper red bar (where present) indicates the fraction of residues that have poor fit to the electron density.

Mol	Chain	Length	Quality of chain
1	A	286	
1	B	286	

2 Entry composition i

There are 5 unique types of molecules in this entry. The entry contains 5042 atoms, of which 0 are hydrogen and 0 are deuterium.

In the tables below, the ZeroOcc column contains the number of atoms modelled with zero occupancy, the AltConf column contains the number of residues with at least one atom in alternate conformation and the Trace column contains the number of residues modelled with at most 2 atoms.

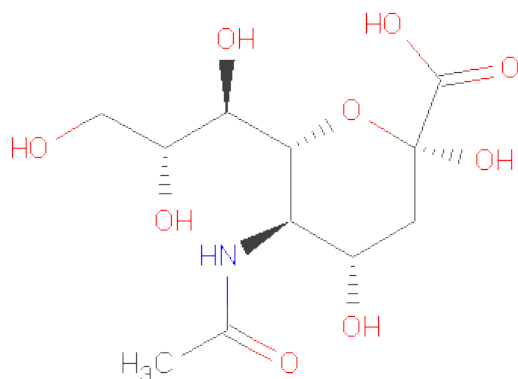
- Molecule 1 is a protein called Ricin B-related lectin.

Mol	Chain	Residues	Atoms					ZeroOcc	AltConf	Trace
1	A	278	Total	C	N	O	S	0	0	0
			2159	1381	360	413	5			
1	B	278	Total	C	N	O	S	0	0	0
			2159	1381	360	413	5			

- Molecule 2 is a polymer of unknown type called 2,6-Sialyl-lactosamine.

Mol	Chain	Residues	Atoms				ZeroOcc	AltConf
2	A	2	Total	C	N	O	0	0
			26	14	1	11		

- Molecule 3 is SUGAR (O-SIALIC ACID) (three-letter code: SIA) (formula: C₁₁H₁₉NO₉).



Mol	Chain	Residues	Atoms				ZeroOcc	AltConf
3	A	1	Total	C	N	O	0	0
			20	11	1	8		

- Molecule 4 is a polymer of unknown type called SUGAR (3-MER).

Mol	Chain	Residues	Atoms				ZeroOcc	AltConf
4	B	3	Total	C	N	O	0	0
			46	25	2	19		

- Molecule 5 is water.

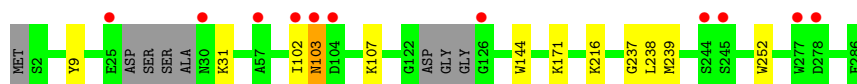
Mol	Chain	Residues	Atoms		ZeroOcc	AltConf
5	A	325	Total	O	0	0
			325	325		
5	B	307	Total	O	0	0
			307	307		

3 Residue-property plots

These plots are drawn for all protein, RNA and DNA chains in the entry. The first graphic for a chain summarises the proportions of errors displayed in the second graphic. The second graphic shows the sequence view annotated by issues in geometry and electron density. Residues are color-coded according to the number of geometric quality criteria for which they contain at least one outlier: green = 0, yellow = 1, orange = 2 and red = 3 or more. A red dot above a residue indicates a poor fit to the electron density ($RSRZ > 2$). Stretches of 2 or more consecutive residues without any outlier are shown as a green connector. Residues present in the sample, but not in the model, are shown in grey.

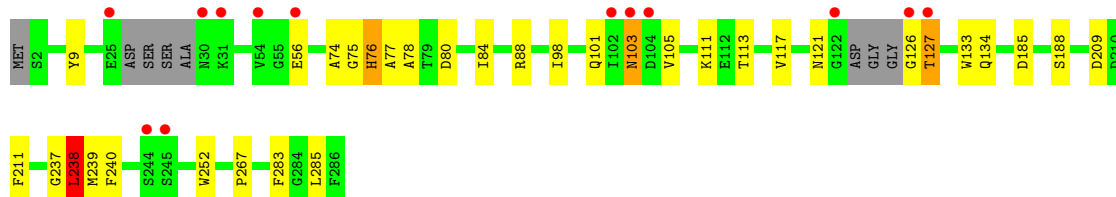
- Molecule 1: Ricin B-related lectin

Chain A: 



- Molecule 1: Ricin B-related lectin

Chain B: 



4 Data and refinement statistics

Property	Value	Source
Space group	P 21 21 2	Depositor
Cell constants a, b, c, α , β , γ	115.81Å 59.40Å 103.23Å 90.00° 90.00° 90.00°	Depositor
Resolution (Å)	38.50 – 1.70 38.53 – 1.70	Depositor EDS
% Data completeness (in resolution range)	99.0 (38.50-1.70) 99.0 (38.53-1.70)	Depositor EDS
R_{merge}	(Not available)	Depositor
R_{sym}	0.06	Depositor
$\langle I/\sigma(I) \rangle$ ¹	3.08 (at 1.70Å)	Xtriage
Refinement program	REFMAC 5.5.0109	Depositor
R, R_{free}	0.185 , 0.217 0.189 , 0.221	Depositor DCC
R_{free} test set	3939 reflections (5.29%)	DCC
Wilson B-factor (Å ²)	21.5	Xtriage
Anisotropy	0.070	Xtriage
Bulk solvent k_{sol} (e/Å ³), B_{sol} (Å ²)	0.37 , 44.3	EDS
Estimated twinning fraction	No twinning to report.	Xtriage
L-test for twinning	$\langle L \rangle = 0.49$, $\langle L^2 \rangle = 0.32$	Xtriage
Outliers	1 of 78403 reflections (0.001%)	Xtriage
F_o, F_c correlation	0.96	EDS
Total number of atoms	5042	wwPDB-VP
Average B, all atoms (Å ²)	28.0	wwPDB-VP

Xtriage's analysis on translational NCS is as follows: *The largest off-origin peak in the Patterson function is 4.64% of the height of the origin peak. No significant pseudotranslation is detected.*

¹Intensities estimated from amplitudes.

5 Model quality

5.1 Standard geometry

Bond lengths and bond angles in the following residue types are not validated in this section: SIA, GAL, NAG

The Z score for a bond length (or angle) is the number of standard deviations the observed value is removed from the expected value. A bond length (or angle) with $|Z| > 5$ is considered an outlier worth inspection. RMSZ is the root-mean-square of all Z scores of the bond lengths (or angles).

Mol	Chain	Bond lengths		Bond angles	
		RMSZ	$\# Z > 5$	RMSZ	$\# Z > 5$
1	A	1.08	2/2216 (0.1%)	0.95	3/3014 (0.1%)
1	B	1.14	1/2216 (0.0%)	1.04	7/3014 (0.2%)
All	All	1.11	3/4432 (0.1%)	1.00	10/6028 (0.2%)

Chiral center outliers are detected by calculating the chiral volume of a chiral center and verifying if the center is modelled as a planar moiety or with the opposite hand. A planarity outlier is detected by checking planarity of atoms in a peptide group, atoms in a mainchain group or atoms of a sidechain that are expected to be planar.

Mol	Chain	#Chirality outliers	#Planarity outliers
1	A	0	1
1	B	0	2
All	All	0	3

All (3) bond length outliers are listed below:

Mol	Chain	Res	Type	Atoms	Z	Observed(Å)	Ideal(Å)
1	A	144	TRP	CE3-CZ3	6.34	1.49	1.38
1	B	188	SER	CB-OG	5.57	1.49	1.42
1	A	216	LYS	CE-NZ	5.16	1.61	1.49

All (10) bond angle outliers are listed below:

Mol	Chain	Res	Type	Atoms	Z	Observed(°)	Ideal(°)
1	A	238	LEU	CB-CG-CD2	-8.92	95.83	111.00
1	B	88	ARG	NE-CZ-NH1	8.10	124.35	120.30
1	B	238	LEU	CA-CB-CG	7.89	133.45	115.30
1	A	239	MET	CG-SD-CE	-7.53	88.15	100.20
1	B	238	LEU	CB-CG-CD2	-5.84	101.08	111.00
1	B	239	MET	CG-SD-CE	-5.19	91.90	100.20

Continued on next page...

Continued from previous page...

Mol	Chain	Res	Type	Atoms	Z	Observed(°)	Ideal(°)
1	B	209	ASP	CB-CG-OD2	-5.17	113.65	118.30
1	A	238	LEU	CA-CB-CG	5.10	127.04	115.30
1	B	209	ASP	CB-CG-OD1	5.09	122.89	118.30
1	B	185	ASP	CB-CG-OD2	5.02	122.81	118.30

There are no chirality outliers.

All (3) planarity outliers are listed below:

Mol	Chain	Res	Type	Group
1	A	9	TYR	Peptide
1	B	103	ASN	Peptide
1	B	9	TYR	Peptide

5.2 Close contacts ⓘ

In the following table, the Non-H and H(model) columns list the number of non-hydrogen atoms and hydrogen atoms in the chain respectively. The H(added) column lists the number of hydrogens added by MolProbity. The Clashes column lists the number of clashes within the asymmetric unit, and the number in parentheses is this value normalized per 1000 atoms of the molecule in the chain. The Symm-Clashes column gives symmetry related clashes, in the same way as for the Clashes column.

Mol	Chain	Non-H	H(model)	H(added)	Clashes	Symm-Clashes
1	A	2159	0	2047	8	0
1	B	2159	0	2047	20	0
2	A	26	0	24	3	0
3	A	20	0	17	3	0
4	B	46	0	40	0	0
5	A	325	0	0	1	0
5	B	307	0	0	0	0
All	All	5042	0	4175	30	0

Clashscore is defined as the number of clashes calculated for the entry per 1000 atoms (including hydrogens) of the entry. The overall clashscore for this entry is 3.

All (30) close contacts within the same asymmetric unit are listed below.

Atom-1	Atom-2	Distance(Å)	Clash(Å)
2:A:302:GAL:O6	3:A:303:SIA:C2	1.89	1.20
2:A:302:GAL:HO6	3:A:303:SIA:C2	1.63	1.04
1:B:76:HIS:O	1:B:113:THR:CG2	2.35	0.75
1:B:75:GLY:C	1:B:77:ALA:H	1.96	0.69

Continued on next page...

Continued from previous page...

Atom-1	Atom-2	Distance(Å)	Clash(Å)
1:B:78:ALA:HB2	1:B:113:THR:HB	1.75	0.68
1:B:76:HIS:O	1:B:113:THR:HG22	1.93	0.67
1:B:75:GLY:C	1:B:77:ALA:N	2.46	0.66
1:A:102:ILE:O	1:A:103:ASN:CB	2.51	0.59
1:B:285:LEU:C	1:B:285:LEU:HD12	2.25	0.57
1:A:171:LYS:HD2	1:B:283:PHE:CD1	2.40	0.57
1:B:237:GLY:HA3	1:B:252:TRP:CE2	2.40	0.57
1:B:103:ASN:HB2	1:B:105:VAL:HG23	1.85	0.56
1:B:98:ILE:CD1	1:B:111:LYS:HA	2.38	0.54
1:A:102:ILE:O	1:A:103:ASN:HB3	2.07	0.54
1:A:237:GLY:HA3	1:A:252:TRP:CE2	2.43	0.53
1:B:56:GLU:OE2	1:B:111:LYS:NZ	2.42	0.53
2:A:302:GAL:O6	3:A:303:SIA:C1	2.57	0.52
1:B:75:GLY:O	1:B:77:ALA:N	2.43	0.51
1:A:102:ILE:C	1:A:103:ASN:OD1	2.49	0.51
1:A:102:ILE:O	1:A:102:ILE:HG22	2.13	0.48
1:A:102:ILE:C	1:A:103:ASN:CG	2.74	0.47
1:B:133:TRP:HD1	1:B:134:GLN:O	1.98	0.45
1:B:76:HIS:O	1:B:113:THR:HG21	2.15	0.45
1:B:103:ASN:HB2	1:B:105:VAL:CG2	2.46	0.45
1:B:126:GLY:O	1:B:127:THR:O	2.36	0.44
1:B:84:ILE:HD13	1:B:117:VAL:HG22	1.99	0.43
1:A:107:LYS:NZ	5:A:309:HOH:O	2.51	0.42
1:B:211:PHE:HB3	1:B:267:PRO:HG2	2.02	0.41
1:B:80:ASP:HB3	1:B:133:TRP:CZ3	2.56	0.41
1:B:238:LEU:HD11	1:B:240:PHE:CE1	2.56	0.40

There are no symmetry-related clashes.

5.3 Torsion angles

5.3.1 Protein backbone ⓘ

In the following table, the Percentiles column shows the percent Ramachandran outliers of the chain as a percentile score with respect to all X-ray entries followed by that with respect to entries of similar resolution. The Analysed column shows the number of residues for which the backbone conformation was analysed, and the total number of residues.

Mol	Chain	Analysed	Favoured	Allowed	Outliers	Percentiles	
1	A	272/286 (95%)	260 (96%)	11 (4%)	1 (0%)	43	22
1	B	272/286 (95%)	257 (94%)	11 (4%)	4 (2%)	15	2

Continued on next page...

Continued from previous page...

Mol	Chain	Analysed	Favoured	Allowed	Outliers	Percentiles	
All	All	544/572 (95%)	517 (95%)	22 (4%)	5 (1%)	25	6

All (5) Ramachandran outliers are listed below:

Mol	Chain	Res	Type
1	A	103	ASN
1	B	127	THR
1	B	74	ALA
1	B	121	ASN
1	B	76	HIS

5.3.2 Protein sidechains ⓘ

In the following table, the Percentiles column shows the percent sidechain outliers of the chain as a percentile score with respect to all X-ray entries followed by that with respect to entries of similar resolution. The Analysed column shows the number of residues for which the sidechain conformation was analysed, and the total number of residues.

Mol	Chain	Analysed	Rotameric	Outliers	Percentiles	
1	A	224/229 (98%)	223 (100%)	1 (0%)	95	92
1	B	224/229 (98%)	222 (99%)	2 (1%)	87	79
All	All	448/458 (98%)	445 (99%)	3 (1%)	91	85

All (3) residues with a non-rotameric sidechain are listed below:

Mol	Chain	Res	Type
1	A	31	LYS
1	B	101	GLN
1	B	238	LEU

Some sidechains can be flipped to improve hydrogen bonding and reduce clashes. All (1) such sidechains are listed below:

Mol	Chain	Res	Type
1	B	121	ASN

5.3.3 RNA ⓘ

There are no RNA chains in this entry.

5.4 Non-standard residues in protein, DNA, RNA chains ⓘ

There are no non-standard protein/DNA/RNA residues in this entry.

5.5 Carbohydrates ⓘ

5 carbohydrates are modelled in this entry.

In the following table, the Counts columns list the number of bonds (or angles) for which Mogul statistics could be retrieved, the number of bonds (or angles) that are observed in the model and the number of bonds (or angles) that are defined in the chemical component dictionary. The Link column lists molecule types, if any, to which the group is linked. The Z score for a bond length (or angle) is the number of standard deviations the observed value is removed from the expected value. A bond length (or angle) with $|Z| > 2$ is considered an outlier worth inspection. RMSZ is the root-mean-square of all Z scores of the bond lengths (or angles).

Mol	Type	Chain	Res	Link	Bond lengths			Bond angles		
					Counts	RMSZ	# $ Z > 2$	Counts	RMSZ	# $ Z > 2$
2	NAG	A	301	2	15,15,15	0.73	0	21,21,21	2.01	3 (14%)
2	GAL	A	302	2	10,11,12	0.85	0	11,15,17	1.33	2 (18%)
4	NAG	B	301	4	15,15,15	0.62	0	21,21,21	1.87	9 (42%)
4	GAL	B	302	4	10,11,12	1.21	1 (10%)	11,15,17	2.28	6 (54%)
4	SIA	B	303	4	20,20,21	4.20	5 (25%)	23,28,31	4.09	8 (34%)

In the following table, the Chirals column lists the number of chiral outliers, the number of chiral centers analysed, the number of these observed in the model and the number defined in the chemical component dictionary. Similar counts are reported in the Torsion and Rings columns. '-' means no outliers of that kind were identified.

Mol	Type	Chain	Res	Link	Chirals	Torsions	Rings
2	NAG	A	301	2	-	0/6/26/26	0/1/1/1
2	GAL	A	302	2	-	0/2/19/22	0/1/1/1
4	NAG	B	301	4	-	0/6/26/26	0/1/1/1
4	GAL	B	302	4	-	0/2/19/22	0/1/1/1
4	SIA	B	303	4	-	0/15/34/38	0/1/1/1

All (6) bond length outliers are listed below:

Mol	Chain	Res	Type	Atoms	Z	Observed(Å)	Ideal(Å)
4	B	303	SIA	O6-C2	17.43	1.44	1.28
4	B	303	SIA	C4-C5	3.95	1.56	1.53
4	B	302	GAL	O5-C5	-3.07	1.39	1.45
4	B	303	SIA	C7-C6	2.44	1.55	1.52

Continued on next page...

Continued from previous page...

Mol	Chain	Res	Type	Atoms	Z	Observed(Å)	Ideal(Å)
4	B	303	SIA	C6-C5	2.41	1.57	1.53
4	B	303	SIA	C3-C2	2.06	1.53	1.46

All (28) bond angle outliers are listed below:

Mol	Chain	Res	Type	Atoms	Z	Observed(°)	Ideal(°)
4	B	303	SIA	O6-C2-C3	-13.67	107.06	124.91
4	B	303	SIA	C7-C6-C5	10.45	129.66	114.24
2	A	301	NAG	O5-C1-C2	6.40	116.10	109.61
2	A	301	NAG	C1-C2-C3	4.34	116.81	110.59
4	B	303	SIA	C3-C4-C5	4.33	116.35	110.41
4	B	302	GAL	O5-C5-C6	-4.21	102.57	106.98
4	B	303	SIA	C6-C5-N5	3.68	117.40	110.99
4	B	301	NAG	O4-C4-C5	-3.65	99.67	109.28
4	B	303	SIA	O6-C6-C5	-3.58	105.81	110.29
4	B	302	GAL	O3-C3-C2	-3.47	103.60	109.94
2	A	301	NAG	C4-C3-C2	3.26	115.07	110.44
4	B	303	SIA	O6-C6-C7	-3.03	100.11	105.73
4	B	301	NAG	C6-C5-C4	-2.77	106.31	113.00
4	B	301	NAG	O1-C1-C2	-2.76	103.13	109.27
4	B	301	NAG	O3-C3-C2	-2.72	104.02	109.61
2	A	302	GAL	O6-C6-C5	-2.66	102.21	111.36
4	B	303	SIA	O8-C8-C7	-2.59	102.59	109.05
4	B	301	NAG	O5-C1-C2	2.50	112.14	109.61
2	A	302	GAL	O5-C5-C6	-2.46	104.40	106.98
4	B	301	NAG	C3-C4-C5	2.42	114.52	110.20
4	B	302	GAL	C3-C4-C5	-2.38	105.96	110.20
4	B	301	NAG	O5-C5-C4	2.37	114.16	109.76
4	B	302	GAL	O3-C3-C4	2.35	115.62	110.35
4	B	303	SIA	O8-C8-C9	2.29	114.54	109.20
4	B	302	GAL	O2-C2-C3	-2.23	105.36	110.18
4	B	301	NAG	O4-C4-C3	2.11	115.09	110.35
4	B	302	GAL	O5-C5-C4	-2.04	108.06	110.65
4	B	301	NAG	C4-C3-C2	2.03	113.33	110.44

There are no chirality outliers.

There are no torsion outliers.

There are no ring outliers.

5.6 Ligand geometry ⓘ

1 ligand is modelled in this entry.

In the following table, the Counts columns list the number of bonds (or angles) for which Mogul statistics could be retrieved, the number of bonds (or angles) that are observed in the model and the number of bonds (or angles) that are defined in the chemical component dictionary. The Link column lists molecule types, if any, to which the group is linked. The Z score for a bond length (or angle) is the number of standard deviations the observed value is removed from the expected value. A bond length (or angle) with $|Z| > 2$ is considered an outlier worth inspection. RMSZ is the root-mean-square of all Z scores of the bond lengths (or angles).

Mol	Type	Chain	Res	Link	Bond lengths			Bond angles		
					Counts	RMSZ	$\# Z > 2$	Counts	RMSZ	$\# Z > 2$
3	SIA	A	303	-	20,20,21	4.51	2 (10%)	23,28,31	2.37	4 (17%)

In the following table, the Chirals column lists the number of chiral outliers, the number of chiral centers analysed, the number of these observed in the model and the number defined in the chemical component dictionary. Similar counts are reported in the Torsion and Rings columns. '-' means no outliers of that kind were identified.

Mol	Type	Chain	Res	Link	Chirals	Torsions	Rings
3	SIA	A	303	-	-	0/15/34/38	0/1/1/1

All (2) bond length outliers are listed below:

Mol	Chain	Res	Type	Atoms	Z	Observed(Å)	Ideal(Å)
3	A	303	SIA	O6-C2	19.46	1.46	1.28
3	A	303	SIA	C3-C2	2.40	1.55	1.46

All (4) bond angle outliers are listed below:

Mol	Chain	Res	Type	Atoms	Z	Observed(°)	Ideal(°)
3	A	303	SIA	O6-C2-C3	-7.62	114.96	124.91
3	A	303	SIA	C3-C4-C5	6.05	118.72	110.41
3	A	303	SIA	C4-C5-N5	-2.51	104.56	110.12
3	A	303	SIA	C6-C5-N5	2.02	114.50	110.99

There are no chirality outliers.

There are no torsion outliers.

There are no ring outliers.

5.7 Other polymers ⓘ

There are no such residues in this entry.

5.8 Polymer linkage issues

There are no chain breaks in this entry.

6 Fit of model and data ⓘ

6.1 Protein, DNA and RNA chains ⓘ

In the following table, the column labelled ‘#RSRZ > 2’ contains the number (and percentage) of RSRZ outliers, followed by percent RSRZ outliers for the chain as percentile scores relative to all X-ray entries and entries of similar resolution. The OWAB column contains the minimum, median, 95th percentile and maximum values of the occupancy-weighted average B-factor per residue. The column labelled ‘Q < 0.9’ lists the number of (and percentage) of residues with an average occupancy less than 0.9.

Mol	Chain	Analysed	<RSRZ>	#RSRZ>2	OWAB(Å ²)	Q<0.9
1	A	278/286 (97%)	-0.12	11 (3%) 36 41	17, 24, 43, 57	0
1	B	278/286 (97%)	0.13	13 (4%) 30 34	17, 25, 47, 63	0
All	All	556/572 (97%)	0.01	24 (4%) 34 38	17, 25, 47, 63	0

All (24) RSRZ outliers are listed below:

Mol	Chain	Res	Type	RSRZ
1	B	126	GLY	13.5
1	A	102	ILE	9.6
1	B	102	ILE	6.0
1	A	30	ASN	5.1
1	A	57	ALA	5.0
1	B	127	THR	4.7
1	B	30	ASN	4.6
1	A	103	ASN	4.2
1	B	103	ASN	4.0
1	A	126	GLY	4.0
1	B	122	GLY	3.7
1	A	244	SER	3.7
1	B	244	SER	3.4
1	A	104	ASP	3.4
1	A	25	GLU	3.3
1	B	31	LYS	3.0
1	A	245	SER	2.8
1	B	104	ASP	2.7
1	B	54	VAL	2.5
1	B	25	GLU	2.4
1	B	56	GLU	2.3
1	A	277	TRP	2.2
1	B	245	SER	2.1
1	A	278	ASP	2.1

6.2 Non-standard residues in protein, DNA, RNA chains ⓘ

There are no non-standard protein/DNA/RNA residues in this entry.

6.3 Carbohydrates ⓘ

In the following table, the Atoms column lists the number of modelled atoms in the group and the number defined in the chemical component dictionary. LLDF column lists the quality of electron density of the group with respect to its neighbouring residues in protein, DNA or RNA chains. The B-factors column lists the minimum, median, 95th percentile and maximum values of B factors of atoms in the group. The column labelled 'Q< 0.9' lists the number of atoms with occupancy less than 0.9.

Mol	Type	Chain	Res	Atoms	RSR	LLDF	B-factors(Å ²)	Q<0.9
2	NAG	A	301	15/15	0.27	12.31	52,67,73,73	0
4	NAG	B	301	15/15	0.24	2.80	37,52,61,61	0
4	SIA	B	303	20/21	0.30	1.21	53,60,67,67	0
2	GAL	A	302	11/12	0.08	-0.04	31,37,40,41	0
4	GAL	B	302	11/12	0.10	-0.50	29,40,43,43	0

6.4 Ligands ⓘ

In the following table, the Atoms column lists the number of modelled atoms in the group and the number defined in the chemical component dictionary. LLDF column lists the quality of electron density of the group with respect to its neighbouring residues in protein, DNA or RNA chains. The B-factors column lists the minimum, median, 95th percentile and maximum values of B factors of atoms in the group. The column labelled 'Q< 0.9' lists the number of atoms with occupancy less than 0.9.

Mol	Type	Chain	Res	Atoms	RSR	LLDF	B-factors(Å ²)	Q<0.9
3	SIA	A	303	20/21	0.30	1.38	54,58,65,66	0

6.5 Other polymers ⓘ

There are no such residues in this entry.