



Full wwPDB X-ray Structure Validation Report

Sep 26, 2014 – 10:24 AM EDT

PDB ID : 4PJG
Title : Structure of human MR1-Ac-6-FP in complex with human MAIT B-F3-C1 TCR
Authors : Birkinshaw, R.W.; Rossjohn, J.
Deposited on : 2014-05-12
Resolution : 2.40 Å(reported)

This is a full wwPDB validation report for a publicly released PDB entry.
We welcome your comments at validation@mail.wwpdb.org
A user guide is available at <http://wwpdb.org/ValidationPDFNotes.html>

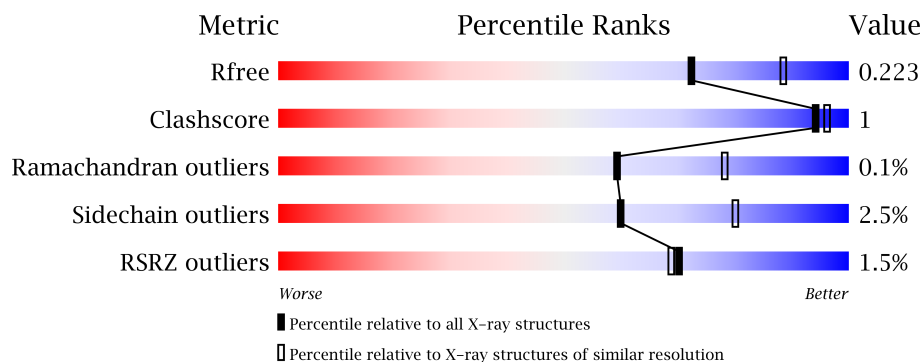
The following versions of software and data (see [references](#)) were used in the production of this report:

MolProbity : 4.02b-467
Mogul : 1.16 November 2013
Xtriage (Phenix) : dev-1439
EDS : stable23828
Percentile statistics : 21963
Refmac : 5.8.0049
CCP4 : 6.3.0 (Settle)
Ideal geometry (proteins) : Engh & Huber (2001)
Ideal geometry (DNA, RNA) : Parkinson et. al. (1996)
Validation Pipeline (wwPDB-VP) : stable23828

1 Overall quality at a glance

The reported resolution of this entry is 2.40 Å.

Percentile scores (ranging between 0-100) for global validation metrics of the entry are shown in the following graphic. The table shows the number of entries on which the scores are based.



Metric	Whole archive (#Entries)	Similar resolution (#Entries, resolution range(Å))
R_{free}	66092	2207 (2.40-2.40)
Clashscore	79885	2789 (2.40-2.40)
Ramachandran outliers	78287	2736 (2.40-2.40)
Sidechain outliers	78261	2737 (2.40-2.40)
RSRZ outliers	66119	2210 (2.40-2.40)

The table below summarises the geometric issues observed across the polymeric chains and their fit to the electron density. The red, orange, yellow and green segments on the lower bar indicate the fraction of residues that contain outliers for ≥ 3 , 2, 1 and 0 types of geometric quality criteria. The upper red bar (where present) indicates the fraction of residues that have poor fit to the electron density.

Mol	Chain	Length	Quality of chain
1	A	271	
1	C	271	
2	B	100	
2	D	100	
3	E	205	
3	G	205	
4	F	246	
4	H	246	

2 Entry composition

There are 6 unique types of molecules in this entry. The entry contains 13151 atoms, of which 0 are hydrogen and 0 are deuterium.

In the tables below, the ZeroOcc column contains the number of atoms modelled with zero occupancy, the AltConf column contains the number of residues with at least one atom in alternate conformation and the Trace column contains the number of residues modelled with at most 2 atoms.

- Molecule 1 is a protein called Major histocompatibility complex class I-related gene protein.

Mol	Chain	Residues	Atoms					ZeroOcc	AltConf	Trace
1	A	264	Total	C	N	O	S	0	2	0
			2182	1399	378	394	11			
1	C	249	Total	C	N	O	S	0	0	0
			1997	1285	344	358	10			

There are 4 discrepancies between the modelled and reference sequences:

Chain	Residue	Modelled	Actual	Comment	Reference
A	0	MET	-	initiating methionine	UNP Q95460
A	261	SER	CYS	engineered mutation	UNP Q95460
C	0	MET	-	initiating methionine	UNP Q95460
C	261	SER	CYS	engineered mutation	UNP Q95460

- Molecule 2 is a protein called Beta-2-microglobulin.

Mol	Chain	Residues	Atoms					ZeroOcc	AltConf	Trace
2	B	99	Total	C	N	O	S	0	0	0
			776	498	131	144	3			
2	D	97	Total	C	N	O	S	0	0	0
			745	481	126	136	2			

There are 2 discrepancies between the modelled and reference sequences:

Chain	Residue	Modelled	Actual	Comment	Reference
B	0	MET	-	initiating methionine	UNP P61769
D	0	MET	-	initiating methionine	UNP P61769

- Molecule 3 is a protein called TCR-alpha.

Mol	Chain	Residues	Atoms					ZeroOcc	AltConf	Trace
3	E	198	Total	C	N	O	S	0	0	0
			1499	952	240	298	9			

Continued on next page...

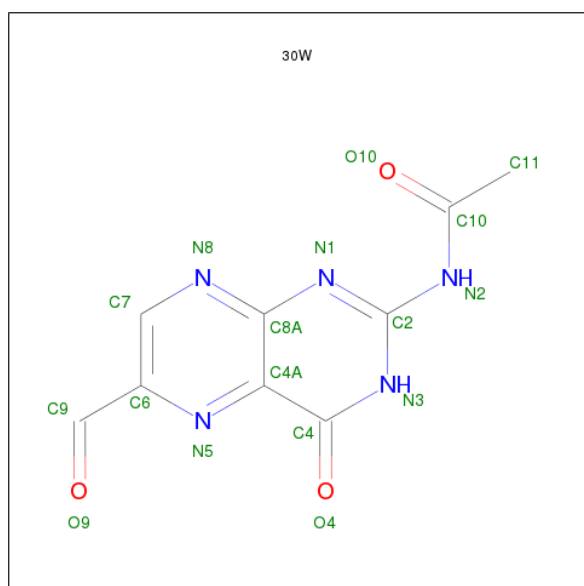
Continued from previous page...

Mol	Chain	Residues	Atoms					ZeroOcc	AltConf	Trace
3	G	188	Total	C	N	O	S	0	0	0
			1389	888	222	271	8			

- Molecule 4 is a protein called TCR-beta.

Mol	Chain	Residues	Atoms					ZeroOcc	AltConf	Trace
4	F	241	Total	C	N	O	S	0	3	0
			1905	1195	333	368	9			
4	H	240	Total	C	N	O	S	0	0	0
			1843	1164	323	347	9			

- Molecule 5 is N-(6-formyl-4-oxo-3,4-dihydropteridin-2-yl)acetamide (three-letter code: 30W) (formula: C₉H₇N₅O₃).



Mol	Chain	Residues	Atoms				ZeroOcc	AltConf
5	A	1	Total	C	N	O	0	0
			16	9	5	2		
5	C	1	Total	C	N	O	0	0
			16	9	5	2		

- Molecule 6 is water.

Mol	Chain	Residues	Atoms	ZeroOcc	AltConf
6	A	145	Total 145 O 145	0	0

Continued on next page...

Continued from previous page...

Mol	Chain	Residues	Atoms		ZeroOcc	AltConf
6	B	44	Total 44	O 44	0	0
6	C	130	Total 130	O 130	0	0
6	D	32	Total 32	O 32	0	0
6	E	116	Total 116	O 116	0	0
6	F	146	Total 146	O 146	0	0
6	G	74	Total 74	O 74	0	0
6	H	96	Total 96	O 96	0	0

3 Residue-property plots

These plots are drawn for all protein, RNA and DNA chains in the entry. The first graphic for a chain summarises the proportions of errors displayed in the second graphic. The second graphic shows the sequence view annotated by issues in geometry and electron density. Residues are color-coded according to the number of geometric quality criteria for which they contain at least one outlier: green = 0, yellow = 1, orange = 2 and red = 3 or more. A red dot above a residue indicates a poor fit to the electron density ($RSRZ > 2$). Stretches of 2 or more consecutive residues without any outlier are shown as a green connector. Residues present in the sample, but not in the model, are shown in grey.

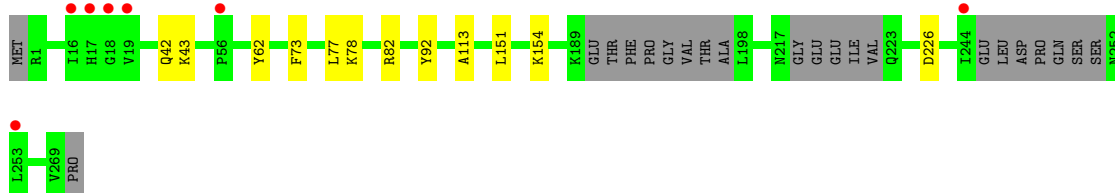
- Molecule 1: Major histocompatibility complex class I-related gene protein

Chain A: 



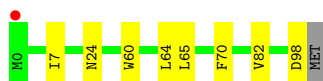
- Molecule 1: Major histocompatibility complex class I-related gene protein

Chain C: 



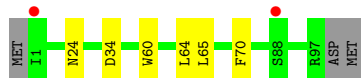
- Molecule 2: Beta-2-microglobulin

Chain B: 



- Molecule 2: Beta-2-microglobulin

Chain D: 



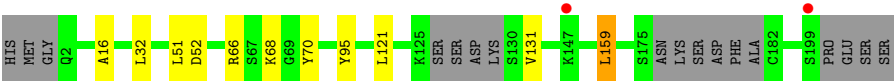
- Molecule 3: TCR-alpha

Chain E: 



- Molecule 3: TCR-alpha

Chain G: 



● Molecule 4: TCR-beta

Chain F:



● Molecule 4: TCR-beta

Chain H:



4 Data and refinement statistics

Property	Value	Source
Space group	C 1 2 1	Depositor
Cell constants a, b, c, α , β , γ	217.70Å 70.98Å 142.34Å 90.00° 103.93° 90.00°	Depositor
Resolution (Å)	19.66 – 2.40 19.63 – 2.40	Depositor EDS
% Data completeness (in resolution range)	89.6 (19.66-2.40) 89.6 (19.63-2.40)	Depositor EDS
R_{merge}	(Not available)	Depositor
R_{sym}	(Not available)	Depositor
$\langle I/\sigma(I) \rangle$ ¹	2.74 (at 2.41Å)	Xtriage
Refinement program	BUSTER 2.10.0	Depositor
R, R_{free}	0.167 , 0.213 0.175 , 0.223	Depositor DCC
R_{free} test set	3702 reflections (5.25%)	DCC
Wilson B-factor (Å ²)	28.2	Xtriage
Anisotropy	0.343	Xtriage
Bulk solvent k_{sol} (e/Å ³), B_{sol} (Å ²)	0.33 , 36.4	EDS
Estimated twinning fraction	No twinning to report.	Xtriage
L-test for twinning	$\langle L \rangle = 0.47$, $\langle L^2 \rangle = 0.30$	Xtriage
Outliers	0 of 74163 reflections	Xtriage
F_o, F_c correlation	0.94	EDS
Total number of atoms	13151	wwPDB-VP
Average B, all atoms (Å ²)	35.0	wwPDB-VP

Xtriage's analysis on translational NCS is as follows: *The largest off-origin peak in the Patterson function is 3.26% of the height of the origin peak. No significant pseudotranslation is detected.*

¹Intensities estimated from amplitudes.

5 Model quality

5.1 Standard geometry

Bond lengths and bond angles in the following residue types are not validated in this section: 30W

The Z score for a bond length (or angle) is the number of standard deviations the observed value is removed from the expected value. A bond length (or angle) with $|Z| > 5$ is considered an outlier worth inspection. RMSZ is the root-mean-square of all Z scores of the bond lengths (or angles).

Mol	Chain	Bond lengths		Bond angles	
		RMSZ	$\# Z > 5$	RMSZ	$\# Z > 5$
1	A	0.53	0/2249	0.69	0/3057
1	C	0.51	0/2057	0.69	0/2799
2	B	0.48	0/799	0.65	0/1092
2	D	0.44	0/768	0.66	0/1053
3	E	0.55	0/1533	0.73	1/2086 (0.0%)
3	G	0.51	0/1420	0.70	0/1937
4	F	0.53	0/1955	0.72	0/2665
4	H	0.48	0/1893	0.71	0/2584
All	All	0.51	0/12674	0.70	1/17273 (0.0%)

There are no bond length outliers.

All (1) bond angle outliers are listed below:

Mol	Chain	Res	Type	Atoms	Z	Observed(°)	Ideal(°)
3	E	159	LEU	CA-CB-CG	5.01	126.82	115.30

There are no chirality outliers.

There are no planarity outliers.

5.2 Close contacts

In the following table, the Non-H and H(model) columns list the number of non-hydrogen atoms and hydrogen atoms in the chain respectively. The H(added) column lists the number of hydrogens added by MolProbity. The Clashes column lists the number of clashes within the asymmetric unit, and the number in parentheses is this value normalized per 1000 atoms of the molecule in the chain. The Symm-Clashes column gives symmetry related clashes, in the same way as for the Clashes column.

Mol	Chain	Non-H	H(model)	H(added)	Clashes	Symm-Clashes
1	A	2182	0	2061	8	0
1	C	1997	0	1843	5	0
2	B	776	0	702	3	0
2	D	745	0	668	2	0
3	E	1499	0	1372	4	0
3	G	1389	0	1235	9	0
4	F	1905	0	1775	7	0
4	H	1843	0	1708	8	0
5	A	16	0	0	0	0
5	C	16	0	0	1	0
6	A	145	0	0	0	0
6	B	44	0	0	0	0
6	C	130	0	0	1	0
6	D	32	0	0	0	0
6	E	116	0	0	0	0
6	F	146	0	0	1	0
6	G	74	0	0	1	0
6	H	96	0	0	0	0
All	All	13151	0	11364	35	0

Clashscore is defined as the number of clashes calculated for the entry per 1000 atoms (including hydrogens) of the entry. The overall clashscore for this entry is 1.

All (35) close contacts within the same asymmetric unit are listed below.

Atom-1	Atom-2	Distance(Å)	Clash(Å)
1:A:127:LEU:HD11	1:A:151:LEU:HD23	1.82	0.62
1:C:151:LEU:HD22	3:E:51:LEU:HD12	1.84	0.58
4:H:13:LEU:HD11	4:H:19:MET:HB2	1.86	0.57
3:G:52:ASP:OD1	3:G:66:ARG:HG2	2.05	0.57
3:E:95:TYR:HB3	4:F:98:PRO:HB3	1.87	0.56
3:G:121:LEU:HB3	4:H:128:PHE:HB3	1.89	0.55
4:F:13:LEU:HD11	4:F:19:MET:HB2	1.89	0.54
1:A:16:ILE:HD12	1:A:17:HIS:CE1	2.43	0.53
2:B:24:ASN:HB3	2:B:65:LEU:HD11	1.92	0.51
1:A:155:ASN:OD1	3:G:66:ARG:NH1	2.41	0.51
4:F:153:ASP:CG	4:F:176:PRO:HG3	2.32	0.50
1:C:154:LYS:HD3	3:E:51:LEU:HD11	1.93	0.49
4:F:127:VAL:HG23	4:F:237:ALA:HB3	1.95	0.49
3:G:95:TYR:HB3	4:H:98:PRO:HB3	1.94	0.48
3:G:16:ALA:HB1	6:G:330:HOH:O	2.13	0.48
4:F:12:VAL:HG23	6:F:443:HOH:O	2.15	0.47
1:A:43:LYS:HD2	1:A:62:TYR:HB3	1.97	0.45
1:C:77:LEU:HD13	1:C:92:TYR:HB2	1.98	0.45

Continued on next page...

Continued from previous page...

Atom-1	Atom-2	Distance(Å)	Clash(Å)
1:C:113:ALA:HB2	2:D:60:TRP:CE2	2.52	0.44
4:H:203:ASN:HB3	4:H:206:ASN:ND2	2.32	0.44
2:D:24:ASN:HB3	2:D:65:LEU:HD11	1.99	0.44
1:C:43:LYS:HD2	1:C:62:TYR:HB3	2.00	0.44
3:G:159:LEU:HD21	4:H:195:ARG:HB2	2.01	0.43
1:A:127:LEU:HD11	1:A:151:LEU:CD2	2.49	0.42
5:C:301:30W:O4	6:C:529:HOH:O	2.22	0.42
1:A:93:GLN:HB2	1:A:113:ALA:HB3	2.01	0.42
4:H:36:ARG:HB3	4:H:46:ILE:HD11	2.03	0.41
3:G:68:LYS:HD3	3:G:70:TYR:HE1	1.86	0.41
3:E:120:GLN:O	4:F:131:SER:HB2	2.20	0.40
3:G:159:LEU:HD13	4:H:169:GLY:HA2	2.03	0.40
2:B:7:ILE:HG12	2:B:82:VAL:HG21	2.03	0.40
4:F:36:ARG:HB3	4:F:46:ILE:HD11	2.04	0.40
1:A:113:ALA:HB2	2:B:60:TRP:CE2	2.57	0.40
1:A:151:LEU:HD22	3:G:51:LEU:HD12	2.04	0.40
4:H:156:GLU:HG3	4:H:215:TYR:HE1	1.87	0.40

There are no symmetry-related clashes.

5.3 Torsion angles

5.3.1 Protein backbone ⓘ

In the following table, the Percentiles column shows the percent Ramachandran outliers of the chain as a percentile score with respect to all X-ray entries followed by that with respect to entries of similar resolution.

The Analysed column shows the number of residues for which the backbone conformation was analysed, and the total number of residues.

Mol	Chain	Analysed	Favoured	Allowed	Outliers	Percentiles	
1	A	262/271 (97%)	255 (97%)	7 (3%)	0	100	100
1	C	241/271 (89%)	235 (98%)	6 (2%)	0	100	100
2	B	97/100 (97%)	96 (99%)	1 (1%)	0	100	100
2	D	95/100 (95%)	94 (99%)	1 (1%)	0	100	100
3	E	196/205 (96%)	192 (98%)	3 (2%)	1 (0%)	38	53
3	G	182/205 (89%)	179 (98%)	3 (2%)	0	100	100
4	F	242/246 (98%)	239 (99%)	3 (1%)	0	100	100

Continued on next page...

Continued from previous page...

Mol	Chain	Analysed	Favoured	Allowed	Outliers	Percentiles	
4	H	238/246 (97%)	234 (98%)	4 (2%)	0	100	100
All	All	1553/1644 (94%)	1524 (98%)	28 (2%)	1 (0%)	59	78

All (1) Ramachandran outliers are listed below:

Mol	Chain	Res	Type
3	E	146	SER

5.3.2 Protein sidechains ⓘ

In the following table, the Percentiles column shows the percent sidechain outliers of the chain as a percentile score with respect to all X-ray entries followed by that with respect to entries of similar resolution. The Analysed column shows the number of residues for which the sidechain conformation was analysed, and the total number of residues.

Mol	Chain	Analysed	Rotameric	Outliers	Percentiles	
1	A	229/241 (95%)	222 (97%)	7 (3%)	52	74
1	C	201/241 (83%)	196 (98%)	5 (2%)	60	80
2	B	81/95 (85%)	78 (96%)	3 (4%)	45	66
2	D	76/95 (80%)	73 (96%)	3 (4%)	43	64
3	E	158/182 (87%)	155 (98%)	3 (2%)	69	87
3	G	137/182 (75%)	134 (98%)	3 (2%)	64	83
4	F	204/214 (95%)	198 (97%)	6 (3%)	55	76
4	H	191/214 (89%)	188 (98%)	3 (2%)	75	89
All	All	1277/1464 (87%)	1244 (97%)	33 (3%)	60	79

All (33) residues with a non-rotameric sidechain are listed below:

Mol	Chain	Res	Type
1	A	42	GLN
1	A	46	ARG
1	A	73	PHE
1	A	79	ARG
1	A	221	ILE
1	A	226	ASP
1	A	245	GLU
2	B	64	LEU
2	B	70	PHE

Continued on next page...

Continued from previous page...

Mol	Chain	Res	Type
2	B	98	ASP
1	C	42	GLN
1	C	73	PHE
1	C	78	LYS
1	C	82	ARG
1	C	226	ASP
2	D	34	ASP
2	D	64	LEU
2	D	70	PHE
3	E	125	LYS
3	E	130	SER
3	E	156	LYS
4	F	110	ARG
4	F	184	ASN
4	F	186	SER
4	F	193	ARG
4	F	205[A]	ARG
4	F	205[B]	ARG
3	G	32	LEU
3	G	131	VAL
3	G	159	LEU
4	H	111	LEU
4	H	124	GLU
4	H	193	ARG

Some sidechains can be flipped to improve hydrogen bonding and reduce clashes. There are no such sidechains identified.

5.3.3 RNA ⓘ

There are no RNA chains in this entry.

5.4 Non-standard residues in protein, DNA, RNA chains ⓘ

There are no non-standard protein/DNA/RNA residues in this entry.

5.5 Carbohydrates ⓘ

There are no carbohydrates in this entry.

5.6 Ligand geometry ⓘ

2 ligands are modelled in this entry.

In the following table, the Counts columns list the number of bonds (or angles) for which Mogul statistics could be retrieved, the number of bonds (or angles) that are observed in the model and the number of bonds (or angles) that are defined in the chemical component dictionary. The Link column lists molecule types, if any, to which the group is linked. The Z score for a bond length (or angle) is the number of standard deviations the observed value is removed from the expected value. A bond length (or angle) with $|Z| > 2$ is considered an outlier worth inspection. RMSZ is the root-mean-square of all Z scores of the bond lengths (or angles).

Mol	Type	Chain	Res	Link	Bond lengths			Bond angles		
					Counts	RMSZ	$\# Z > 2$	Counts	RMSZ	$\# Z > 2$
5	30W	A	301	1	16,17,18	1.38	1 (6%)	20,24,25	3.20	8 (40%)
5	30W	C	301	1	16,17,18	1.47	1 (6%)	20,24,25	3.33	6 (30%)

In the following table, the Chirals column lists the number of chiral outliers, the number of chiral centers analysed, the number of these observed in the model and the number defined in the chemical component dictionary. Similar counts are reported in the Torsion and Rings columns. '-' means no outliers of that kind were identified.

Mol	Type	Chain	Res	Link	Chirals	Torsions	Rings
5	30W	A	301	1	-	0/4/4/6	0/2/2/2
5	30W	C	301	1	-	0/4/4/6	0/2/2/2

All (2) bond length outliers are listed below:

Mol	Chain	Res	Type	Atoms	Z	Observed(Å)	Ideal(Å)
5	C	301	30W	C2-N1	4.60	1.42	1.33
5	A	301	30W	C2-N1	4.30	1.42	1.33

All (14) bond angle outliers are listed below:

Mol	Chain	Res	Type	Atoms	Z	Observed(°)	Ideal(°)
5	C	301	30W	C4-N3-C2	9.37	125.49	120.20
5	A	301	30W	C4-N3-C2	8.99	125.28	120.20
5	C	301	30W	N2-C2-N3	8.35	130.43	117.15
5	A	301	30W	N2-C2-N3	7.37	128.88	117.15
5	A	301	30W	C2-N2-C10	-4.63	123.11	130.12
5	C	301	30W	C2-N1-C8A	4.23	120.49	115.08
5	C	301	30W	C2-N2-C10	-4.16	123.82	130.12
5	A	301	30W	C2-N1-C8A	3.93	120.11	115.08
5	C	301	30W	N2-C2-N1	-3.39	111.56	119.99

Continued on next page...

Continued from previous page...

Mol	Chain	Res	Type	Atoms	Z	Observed($^{\circ}$)	Ideal($^{\circ}$)
5	A	301	30W	N2-C2-N1	-2.84	112.90	119.99
5	A	301	30W	N8-C8A-N1	2.84	120.21	116.14
5	C	301	30W	N3-C2-N1	-2.72	117.82	123.00
5	A	301	30W	N3-C2-N1	-2.61	118.04	123.00
5	A	301	30W	C7-C6-N5	-2.06	120.64	122.73

There are no chirality outliers.

There are no torsion outliers.

There are no ring outliers.

5.7 Other polymers ⓘ

There are no such residues in this entry.

5.8 Polymer linkage issues

There are no chain breaks in this entry.

6 Fit of model and data ⓘ

6.1 Protein, DNA and RNA chains ⓘ

In the following table, the column labelled ‘#RSRZ > 2’ contains the number (and percentage) of RSRZ outliers, followed by percent RSRZ outliers for the chain as percentile scores relative to all X-ray entries and entries of similar resolution. The OWAB column contains the minimum, median, 95th percentile and maximum values of the occupancy-weighted average B-factor per residue. The column labelled ‘Q < 0.9’ lists the number of (and percentage) of residues with an average occupancy less than 0.9.

Mol	Chain	Analysed	<RSRZ>	#RSRZ > 2			OWAB(Å ²)	Q < 0.9
1	A	264/271 (97%)	-0.53	1 (0%)	90	90	13, 28, 52, 79	5 (1%)
1	C	249/271 (91%)	-0.37	7 (2%)	50	48	12, 32, 68, 94	1 (0%)
2	B	99/100 (99%)	-0.35	1 (1%)	79	79	16, 33, 60, 74	1 (1%)
2	D	97/100 (97%)	0.08	2 (2%)	60	58	22, 55, 90, 96	1 (1%)
3	E	198/205 (96%)	-0.34	4 (2%)	62	59	8, 28, 57, 78	1 (0%)
3	G	188/205 (91%)	-0.16	2 (1%)	77	77	12, 41, 82, 98	1 (0%)
4	F	241/246 (97%)	-0.48	2 (0%)	83	82	13, 26, 47, 93	2 (0%)
4	H	240/246 (97%)	-0.22	4 (1%)	67	65	16, 39, 72, 94	3 (1%)
All	All	1576/1644 (95%)	-0.33	23 (1%)	70	69	8, 32, 72, 98	15 (0%)

All (23) RSRZ outliers are listed below:

Mol	Chain	Res	Type	RSRZ
3	E	26	THR	5.7
1	C	17	HIS	4.0
2	B	0	MET	4.0
4	F	243	ALA	3.8
1	C	18	GLY	3.7
1	C	56	PRO	3.5
4	H	220	ASN	3.2
3	E	147	LYS	3.2
2	D	88	SER	2.8
3	G	147	LYS	2.8
1	C	16	ILE	2.8
1	A	17	HIS	2.7
4	H	219	GLU	2.6
1	C	253	LEU	2.5
4	H	224	THR	2.3
4	H	204	PRO	2.3

Continued on next page...

Continued from previous page...

Mol	Chain	Res	Type	RSRZ
3	E	165	ASP	2.1
4	F	183	LEU	2.1
3	G	199	SER	2.1
1	C	244	ILE	2.0
1	C	19	VAL	2.0
3	E	27	SER	2.0
2	D	1	ILE	2.0

6.2 Non-standard residues in protein, DNA, RNA chains ⓘ

There are no non-standard protein/DNA/RNA residues in this entry.

6.3 Carbohydrates ⓘ

There are no carbohydrates in this entry.

6.4 Ligands ⓘ

In the following table, the Atoms column lists the number of modelled atoms in the group and the number defined in the chemical component dictionary. LLDF column lists the quality of electron density of the group with respect to its neighbouring residues in protein, DNA or RNA chains. The B-factors column lists the minimum, median, 95th percentile and maximum values of B factors of atoms in the group. The column labelled 'Q< 0.9' lists the number of atoms with occupancy less than 0.9.

Mol	Type	Chain	Res	Atoms	RSR	LLDF	B-factors(Å ²)	Q<0.9
5	30W	A	301	16/17	0.12	1.12	15,20,26,28	0
5	30W	C	301	16/17	0.11	0.10	19,24,31,32	0

6.5 Other polymers ⓘ

There are no such residues in this entry.