



# Full wwPDB X-ray Structure Validation Report ⓘ

Apr 29, 2014 – 01:23 AM EDT

PDB ID : 4PP7  
Title : Highly Potent and Selective 3-N-methylquinazoline-4(3H)-oneBased Inhibitors of B-RafV600E Kinase  
Authors : Wenglowsky, S.; Ren, L.; Grina, J.; Hansen, J.D.; Laird, E.R.; Moreno, D.; Dinkel, V.; Gloor, S.L.; Hastings, G.; Rana, S.; Rasor, K.; Sturgis, H.L.; Voegtli, W.C.; Vigers, G.P.A.; Willis, B.; Mathieu, S.; Rudolph, J.  
Deposited on : 2014-02-26  
Resolution : 3.40 Å(reported)

This is a full wwPDB validation report for a publicly released PDB entry.  
We welcome your comments at [validation@mail.wwpdb.org](mailto:validation@mail.wwpdb.org)  
A user guide is available at <http://wwpdb.org/ValidationPDFNotes.html>

---

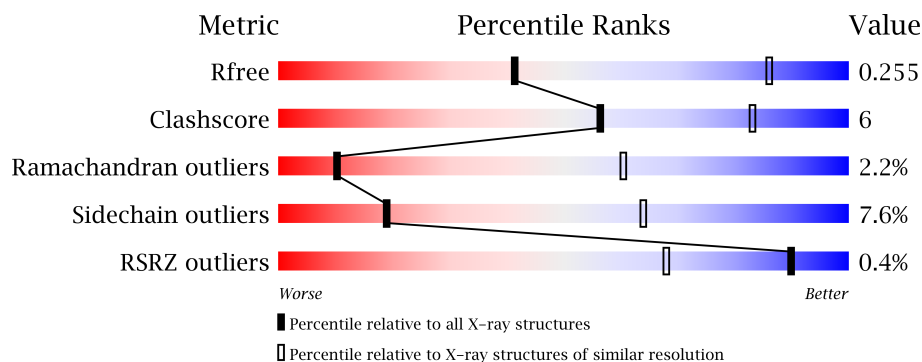
The following versions of software and data (see [references](#)) were used in the production of this report:

MolProbity : 4.02b-467  
Mogul : 1.16 November 2013  
Xtriage (Phenix) : dev-1439  
EDS : stable22978  
Percentile statistics : 21963  
Refmac : 5.8.0049  
CCP4 : 6.3.0 (Settle)  
Ideal geometry (proteins) : Engh & Huber (2001)  
Ideal geometry (DNA, RNA) : Parkinson et. al. (1996)  
Validation Pipeline (wwPDB-VP) : stable22978

# 1 Overall quality at a glance

The reported resolution of this entry is 3.40 Å.

Percentile scores (ranging between 0-100) for global validation metrics of the entry are shown in the following graphic. The table shows the number of entries on which the scores are based.



Metric	Whole archive (#Entries)	Similar resolution (#Entries, resolution range(Å))
$R_{free}$	66092	1017 (3.52-3.28)
Clashscore	79885	1214 (3.50-3.30)
Ramachandran outliers	78287	1177 (3.50-3.30)
Sidechain outliers	78261	1177 (3.50-3.30)
RSRZ outliers	66119	1017 (3.52-3.28)

The table below summarises the geometric issues observed across the polymeric chains and their fit to the electron density. The red, orange, yellow and green segments on the lower bar indicate the fraction of residues that contain outliers for  $\geq 3$ , 2, 1 and 0 types of geometric quality criteria. The upper red bar (where present) indicates the fraction of residues that have poor fit to the electron density.

Mol	Chain	Length	Quality of chain
1	A	307	
1	B	307	

## 2 Entry composition

There are 2 unique types of molecules in this entry. The entry contains 4390 atoms, of which 0 are hydrogen and 0 are deuterium.

In the tables below, the ZeroOcc column contains the number of atoms modelled with zero occupancy, the AltConf column contains the number of residues with at least one atom in alternate conformation and the Trace column contains the number of residues modelled with at most 2 atoms.

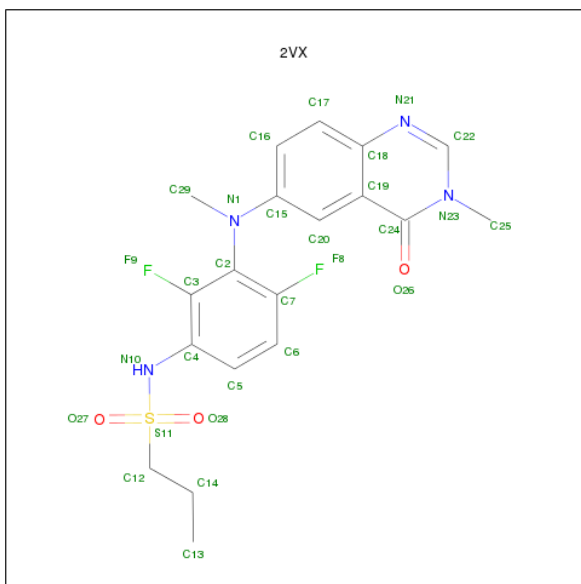
- Molecule 1 is a protein called Serine/threonine-proteinkinase B-raf.

Mol	Chain	Residues	Atoms					ZeroOcc	AltConf	Trace
1	A	267	Total	C	N	O	S	0	0	0
			2137	1370	373	381	13			
1	B	274	Total	C	N	O	S	0	0	0
			2195	1405	384	393	13			

There are 24 discrepancies between the modelled and reference sequences:

Chain	Residue	Modelled	Actual	Comment	Reference
A	420	MET	-	EXPRESSION TAG	UNP P15056
A	421	ASP	-	EXPRESSION TAG	UNP P15056
A	422	ARG	-	EXPRESSION TAG	UNP P15056
A	423	GLY	-	EXPRESSION TAG	UNP P15056
A	424	SER	-	EXPRESSION TAG	UNP P15056
A	425	HIS	-	EXPRESSION TAG	UNP P15056
A	426	HIS	-	EXPRESSION TAG	UNP P15056
A	427	HIS	-	EXPRESSION TAG	UNP P15056
A	428	HIS	-	EXPRESSION TAG	UNP P15056
A	429	HIS	-	EXPRESSION TAG	UNP P15056
A	430	HIS	-	EXPRESSION TAG	UNP P15056
A	431	GLY	-	EXPRESSION TAG	UNP P15056
B	420	MET	-	EXPRESSION TAG	UNP P15056
B	421	ASP	-	EXPRESSION TAG	UNP P15056
B	422	ARG	-	EXPRESSION TAG	UNP P15056
B	423	GLY	-	EXPRESSION TAG	UNP P15056
B	424	SER	-	EXPRESSION TAG	UNP P15056
B	425	HIS	-	EXPRESSION TAG	UNP P15056
B	426	HIS	-	EXPRESSION TAG	UNP P15056
B	427	HIS	-	EXPRESSION TAG	UNP P15056
B	428	HIS	-	EXPRESSION TAG	UNP P15056
B	429	HIS	-	EXPRESSION TAG	UNP P15056
B	430	HIS	-	EXPRESSION TAG	UNP P15056
B	431	GLY	-	EXPRESSION TAG	UNP P15056

- Molecule 2 is N-{2,4-DIFLUORO-3-[METHYL(3-METHYL-4-OXO-3,4-DIHYDROQUINAZOLIN-6-YL)AMINO]PHENYL}PROPANE-1-SULFONAMIDE (three-letter code: 2VX) (formula:  $C_{19}H_{20}F_2N_4O_3S$ ).

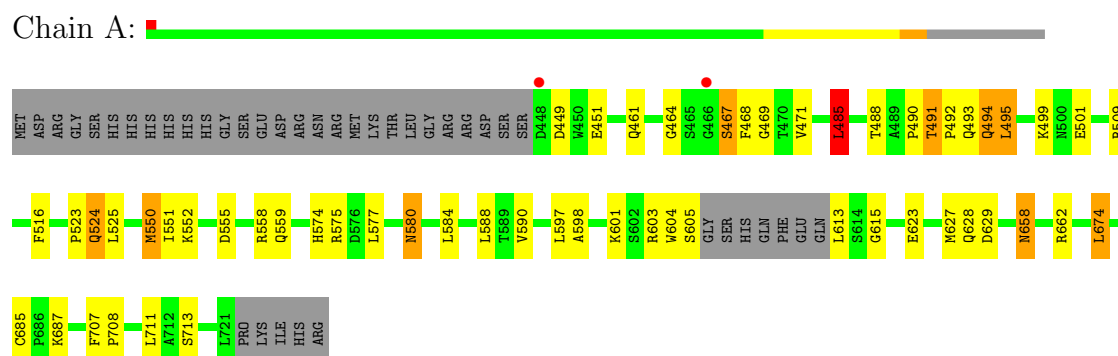


Mol	Chain	Residues	Atoms						ZeroOcc	AltConf
2	A	1	Total	C	F	N	O	S	0	0
			29	19	2	4	3	1		
2	B	1	Total	C	F	N	O	S	0	0
			29	19	2	4	3	1		

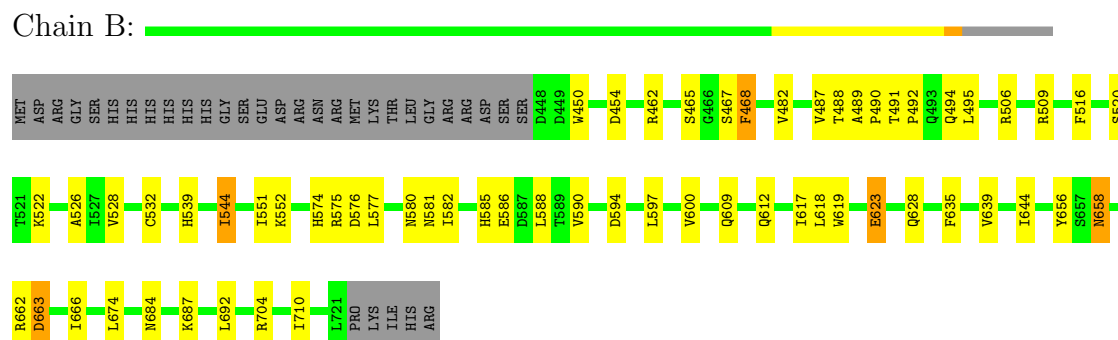
### 3 Residue-property plots

These plots are drawn for all protein, RNA and DNA chains in the entry. The first graphic for a chain summarises the proportions of errors displayed in the second graphic. The second graphic shows the sequence view annotated by issues in geometry and electron density. Residues are color-coded according to the number of geometric quality criteria for which they contain at least one outlier: green = 0, yellow = 1, orange = 2 and red = 3 or more. A red dot above a residue indicates a poor fit to the electron density ( $RSRZ > 2$ ). Stretches of 2 or more consecutive residues without any outlier are shown as a green connector. Residues present in the sample, but not in the model, are shown in grey.

- Molecule 1: Serine/threonine-proteinkinase B-raf



- Molecule 1: Serine/threonine-proteinkinase B-raf



## 4 Data and refinement statistics

Property	Value	Source
Space group	P 41 21 2	Depositor
Cell constants a, b, c, $\alpha$ , $\beta$ , $\gamma$	107.97Å 107.97Å 151.67Å 90.00° 90.00° 90.00°	Depositor
Resolution (Å)	24.75 – 3.40 24.75 – 3.40	Depositor EDS
% Data completeness (in resolution range)	98.5 (24.75-3.40) 98.9 (24.75-3.40)	Depositor EDS
$R_{merge}$	0.14	Depositor
$R_{sym}$	0.12	Depositor
$\langle I/\sigma(I) \rangle$ <sup>1</sup>	3.08 (at 3.38Å)	Xtriage
Refinement program	REFMAC 5.8.0049	Depositor
R, $R_{free}$	0.195 , 0.254 0.195 , 0.255	Depositor DCC
$R_{free}$ test set	620 reflections (5.13%)	DCC
Wilson B-factor (Å <sup>2</sup> )	70.2	Xtriage
Anisotropy	0.050	Xtriage
Bulk solvent $k_{sol}$ (e/Å <sup>3</sup> ), $B_{sol}$ (Å <sup>2</sup> )	0.34 , 35.5	EDS
Estimated twinning fraction	No twinning to report.	Xtriage
L-test for twinning	$\langle  L  \rangle = 0.49$ , $\langle L^2 \rangle = 0.32$	Xtriage
Outliers	1 of 12697 reflections (0.008%)	Xtriage
$F_o, F_c$ correlation	0.93	EDS
Total number of atoms	4390	wwPDB-VP
Average B, all atoms (Å <sup>2</sup> )	73.0	wwPDB-VP

Xtriage's analysis on translational NCS is as follows: *The largest off-origin peak in the Patterson function is 3.77% of the height of the origin peak. No significant pseudotranslation is detected.*

<sup>1</sup>Intensities estimated from amplitudes.

## 5 Model quality

### 5.1 Standard geometry

Bond lengths and bond angles in the following residue types are not validated in this section: 2VX

The Z score for a bond length (or angle) is the number of standard deviations the observed value is removed from the expected value. A bond length (or angle) with  $|Z| > 5$  is considered an outlier worth inspection. RMSZ is the root-mean-square of all Z scores of the bond lengths (or angles).

Mol	Chain	Bond lengths		Bond angles	
		RMSZ	$\# Z  > 5$	RMSZ	$\# Z  > 5$
1	A	0.31	0/2183	0.56	2/2946 (0.1%)
1	B	0.31	0/2244	0.54	0/3029
All	All	0.31	0/4427	0.55	2/5975 (0.0%)

There are no bond length outliers.

All (2) bond angle outliers are listed below:

Mol	Chain	Res	Type	Atoms	Z	Observed(°)	Ideal(°)
1	A	485	LEU	CA-CB-CG	6.13	129.41	115.30
1	A	674	LEU	CA-CB-CG	5.02	126.84	115.30

There are no chirality outliers.

There are no planarity outliers.

### 5.2 Close contacts

In the following table, the Non-H and H(model) columns list the number of non-hydrogen atoms and hydrogen atoms in the chain respectively. The H(added) column lists the number of hydrogens added by MolProbity. The Clashes column lists the number of clashes within the asymmetric unit, and the number in parentheses is this value normalized per 1000 atoms of the molecule in the chain. The Symm-Clashes column gives symmetry related clashes, in the same way as for the Clashes column.

Mol	Chain	Non-H	H(model)	H(added)	Clashes	Symm-Clashes
1	A	2137	0	2177	30	0
1	B	2195	0	2224	30	0
2	A	29	0	0	0	0
2	B	29	0	0	0	0
All	All	4390	0	4401	57	0

Clashscore is defined as the number of clashes calculated for the entry per 1000 atoms (including hydrogens) of the entry. The overall clashscore for this entry is 6.

All (57) close contacts within the same asymmetric unit are listed below.

Atom-1	Atom-2	Distance(Å)	Clash(Å)
1:B:490:PRO:HA	1:B:491:THR:OG1	1.57	1.05
1:A:603:ARG:HH11	1:A:603:ARG:HG3	1.45	0.81
1:A:490:PRO:HA	1:A:491:THR:OG1	1.82	0.79
1:B:658:ASN:H	1:B:658:ASN:HD22	1.33	0.72
1:A:490:PRO:HB3	1:A:494:GLN:HB2	1.76	0.66
1:A:603:ARG:HG3	1:A:603:ARG:NH1	2.13	0.63
1:A:467:SER:O	1:A:469:GLY:N	2.29	0.63
1:B:454:ASP:H	1:B:522:LYS:HD3	1.65	0.61
1:A:464:GLY:HA3	1:A:471:VAL:HB	1.85	0.58
1:A:523:PRO:O	1:A:524:GLN:HB2	2.05	0.57
1:A:598:ALA:HA	1:A:601:LYS:HB2	1.87	0.56
1:B:551:ILE:HD12	1:B:551:ILE:H	1.71	0.56
1:A:492:PRO:HA	1:A:493:GLN:C	2.28	0.54
1:B:467:SER:O	1:B:468:PHE:HB3	2.07	0.54
1:B:582:ILE:HG23	1:B:590:VAL:HG13	1.92	0.52
1:A:658:ASN:HD22	1:A:658:ASN:H	1.57	0.52
1:A:495:LEU:HD22	1:A:499:LYS:HE2	1.92	0.51
1:A:551:ILE:H	1:A:551:ILE:HD12	1.76	0.51
1:B:520:SER:HB3	1:B:526:ALA:HB3	1.91	0.51
1:B:586:GLU:O	1:B:588:LEU:HD12	2.11	0.50
1:B:454:ASP:N	1:B:522:LYS:HD3	2.26	0.50
1:A:524:GLN:HG2	1:A:525:LEU:H	1.77	0.49
1:A:707:PHE:O	1:A:711:LEU:HB2	2.13	0.49
1:B:450:TRP:HE1	1:B:506:ARG:HD2	1.77	0.49
1:A:524:GLN:HG2	1:A:525:LEU:N	2.27	0.49
1:A:601:LYS:O	1:A:605:SER:HB3	2.12	0.48
1:B:576:ASP:O	1:B:581:ASN:ND2	2.46	0.48
1:A:501:GLU:HG3	1:A:597:LEU:HA	1.95	0.48
1:A:509:ARG:HD3	1:B:516:PHE:O	2.12	0.48
1:A:516:PHE:O	1:B:509:ARG:HD3	2.14	0.48
1:B:692:LEU:HD11	1:B:710:ILE:HG23	1.96	0.47
1:B:468:PHE:HZ	1:B:597:LEU:HD23	1.81	0.46
1:A:485:LEU:H	1:A:485:LEU:HD13	1.81	0.46
1:B:482:VAL:HG22	1:B:528:VAL:HG22	1.98	0.46
1:B:532:CYS:HA	1:B:585:HIS:HD2	1.81	0.45
1:A:707:PHE:N	1:A:708:PRO:HD2	2.32	0.44
1:B:492:PRO:HA	1:B:494:GLN:H	1.82	0.44
1:B:544:ILE:HG13	1:B:544:ILE:H	1.60	0.44
1:A:550:MET:HE2	1:A:685:CYS:HA	1.99	0.44

*Continued on next page...*



Continued from previous page...

Atom-1	Atom-2	Distance(Å)	Clash(Å)
1:A:580:ASN:ND2	1:A:580:ASN:H	2.16	0.44
1:B:574:HIS:O	1:B:575:ARG:HB2	2.18	0.43
1:B:635:PHE:O	1:B:639:VAL:HG23	2.18	0.43
1:B:619:TRP:HA	1:B:644:ILE:HG13	2.00	0.43
1:B:617:ILE:HG13	1:B:618:LEU:HD12	2.00	0.43
1:B:623:GLU:OE1	1:B:704:ARG:NH2	2.45	0.43
1:A:559:GLN:HB3	1:A:590:VAL:HB	1.99	0.42
1:A:588:LEU:HD13	1:B:586:GLU:HG3	2.01	0.42
1:B:468:PHE:CZ	1:B:597:LEU:HD23	2.55	0.42
1:A:555:ASP:OD1	1:A:558:ARG:NH1	2.52	0.42
1:B:663:ASP:HA	1:B:666:ILE:HD12	2.02	0.42
1:A:580:ASN:H	1:A:580:ASN:HD22	1.68	0.41
1:A:574:HIS:O	1:A:575:ARG:HB2	2.21	0.41
1:B:462:ARG:HH11	1:B:465:SER:HB3	1.86	0.41
1:A:628:GLN:NE2	1:A:629:ASP:OD1	2.54	0.41
1:B:585:HIS:CE1	1:B:586:GLU:HG2	2.56	0.41
1:B:539:HIS:ND1	1:B:544:ILE:HD11	2.36	0.41
1:A:550:MET:CE	1:A:685:CYS:HA	2.51	0.40

There are no symmetry-related clashes.

## 5.3 Torsion angles

### 5.3.1 Protein backbone ⓘ

In the following table, the Percentiles column shows the percent Ramachandran outliers of the chain as a percentile score with respect to all X-ray entries followed by that with respect to entries of similar resolution. The Analysed column shows the number of residues for which the backbone conformation was analysed, and the total number of residues.

Mol	Chain	Analysed	Favoured	Allowed	Outliers	Percentiles	
1	A	263/307 (86%)	237 (90%)	18 (7%)	8 (3%)	7	53
1	B	272/307 (89%)	242 (89%)	26 (10%)	4 (2%)	15	68
All	All	535/614 (87%)	479 (90%)	44 (8%)	12 (2%)	10	60

All (12) Ramachandran outliers are listed below:

Mol	Chain	Res	Type
1	A	468	PHE
1	A	488	THR

Continued on next page...

*Continued from previous page...*

Mol	Chain	Res	Type
1	A	524	GLN
1	B	468	PHE
1	A	494	GLN
1	B	489	ALA
1	A	467	SER
1	A	491	THR
1	A	615	GLY
1	A	627	MET
1	B	487	VAL
1	B	488	THR

### 5.3.2 Protein sidechains ⓘ

In the following table, the Percentiles column shows the percent sidechain outliers of the chain as a percentile score with respect to all X-ray entries followed by that with respect to entries of similar resolution. The Analysed column shows the number of residues for which the sidechain conformation was analysed, and the total number of residues.

Mol	Chain	Analysed	Rotameric	Outliers	Percentiles	
1	A	235/271 (87%)	217 (92%)	18 (8%)	18	63
1	B	241/271 (89%)	223 (92%)	18 (8%)	19	64
All	All	476/542 (88%)	440 (92%)	36 (8%)	19	64

All (36) residues with a non-rotameric sidechain are listed below:

Mol	Chain	Res	Type
1	A	449	ASP
1	A	451	GLU
1	A	461	GLN
1	A	485	LEU
1	A	495	LEU
1	A	550	MET
1	A	552	LYS
1	A	577	LEU
1	A	580	ASN
1	A	584	LEU
1	A	604	TRP
1	A	613	LEU
1	A	623	GLU
1	A	658	ASN
1	A	662	ARG

*Continued on next page...*

*Continued from previous page...*

Mol	Chain	Res	Type
1	A	674	LEU
1	A	687	LYS
1	A	713	SER
1	B	495	LEU
1	B	544	ILE
1	B	552	LYS
1	B	577	LEU
1	B	580	ASN
1	B	594	ASP
1	B	600	VAL
1	B	609	GLN
1	B	612	GLN
1	B	623	GLU
1	B	628	GLN
1	B	656	TYR
1	B	658	ASN
1	B	662	ARG
1	B	663	ASP
1	B	674	LEU
1	B	684	ASN
1	B	687	LYS

Some sidechains can be flipped to improve hydrogen bonding and reduce clashes. All (14) such sidechains are listed below:

Mol	Chain	Res	Type
1	A	494	GLN
1	A	500	ASN
1	A	562	GLN
1	A	574	HIS
1	A	580	ASN
1	A	585	HIS
1	A	631	ASN
1	A	658	ASN
1	B	493	GLN
1	B	580	ASN
1	B	585	HIS
1	B	609	GLN
1	B	628	GLN
1	B	658	ASN

### 5.3.3 RNA ⓘ

There are no RNA chains in this entry.

## 5.4 Non-standard residues in protein, DNA, RNA chains ⓘ

There are no non-standard protein/DNA/RNA residues in this entry.

## 5.5 Carbohydrates ⓘ

There are no carbohydrates in this entry.

## 5.6 Ligand geometry ⓘ

2 ligands are modelled in this entry.

In the following table, the Counts columns list the number of bonds (or angles) for which Mogul statistics could be retrieved, the number of bonds (or angles) that are observed in the model and the number of bonds (or angles) that are defined in the chemical component dictionary. The Link column lists molecule types, if any, to which the group is linked. The Z score for a bond length (or angle) is the number of standard deviations the observed value is removed from the expected value. A bond length (or angle) with  $|Z| > 2$  is considered an outlier worth inspection. RMSZ is the root-mean-square of all Z scores of the bond lengths (or angles).

Mol	Type	Chain	Res	Link	Bond lengths			Bond angles		
					Counts	RMSZ	$\# Z  > 2$	Counts	RMSZ	$\# Z  > 2$
2	2VX	A	801	-	31,31,31	1.91	10 (32%)	44,46,46	1.46	5 (11%)
2	2VX	B	801	-	31,31,31	1.89	10 (32%)	44,46,46	1.40	5 (11%)

In the following table, the Chirals column lists the number of chiral outliers, the number of chiral centers analysed, the number of these observed in the model and the number defined in the chemical component dictionary. Similar counts are reported in the Torsion and Rings columns. '-' means no outliers of that kind were identified.

Mol	Type	Chain	Res	Link	Chirals	Torsions	Rings
2	2VX	A	801	-	-	0/17/17/17	0/3/3/3
2	2VX	B	801	-	-	0/17/17/17	0/3/3/3

All (20) bond length outliers are listed below:

Mol	Chain	Res	Type	Atoms	Z	Observed(Å)	Ideal(Å)
2	A	801	2VX	C4-N10	-4.81	1.34	1.42

*Continued on next page...*

*Continued from previous page...*

Mol	Chain	Res	Type	Atoms	Z	Observed(Å)	Ideal(Å)
2	B	801	2VX	C4-N10	-4.29	1.35	1.42
2	B	801	2VX	S11-N10	3.96	1.73	1.61
2	A	801	2VX	S11-N10	3.75	1.72	1.61
2	B	801	2VX	C2-N1	-3.41	1.36	1.44
2	A	801	2VX	C24-C19	3.27	1.51	1.44
2	B	801	2VX	C15-N1	-3.16	1.35	1.43
2	B	801	2VX	C24-C19	3.06	1.51	1.44
2	A	801	2VX	C2-N1	-3.04	1.36	1.44
2	A	801	2VX	C15-N1	-2.74	1.36	1.43
2	B	801	2VX	O27-S11	2.54	1.47	1.43
2	B	801	2VX	C17-C16	2.54	1.42	1.36
2	A	801	2VX	C17-C16	2.50	1.41	1.36
2	A	801	2VX	C18-N21	2.41	1.41	1.37
2	A	801	2VX	O27-S11	2.37	1.47	1.43
2	B	801	2VX	O28-S11	2.34	1.47	1.43
2	A	801	2VX	C12-S11	2.28	1.85	1.78
2	B	801	2VX	C12-S11	2.28	1.84	1.78
2	B	801	2VX	C18-N21	2.15	1.41	1.37
2	A	801	2VX	O28-S11	2.14	1.47	1.43

All (10) bond angle outliers are listed below:

Mol	Chain	Res	Type	Atoms	Z	Observed(°)	Ideal(°)
2	A	801	2VX	C15-N1-C2	5.41	125.94	120.59
2	B	801	2VX	C15-N1-C2	4.80	125.34	120.59
2	A	801	2VX	C22-N21-C18	3.95	119.69	116.46
2	B	801	2VX	C22-N21-C18	3.23	119.11	116.46
2	B	801	2VX	C2-C3-C4	-3.22	120.43	124.47
2	A	801	2VX	C2-C3-C4	-3.03	120.66	124.47
2	A	801	2VX	C19-C18-N21	-2.38	120.14	122.45
2	B	801	2VX	C19-C18-N21	-2.23	120.28	122.45
2	B	801	2VX	C6-C7-C2	-2.14	120.64	123.04
2	A	801	2VX	O27-S11-C12	2.02	111.07	107.54

There are no chirality outliers.

There are no torsion outliers.

There are no ring outliers.

## 5.7 Other polymers ⓘ

There are no such residues in this entry.

## 5.8 Polymer linkage issues

There are no chain breaks in this entry.

## 6 Fit of model and data ⓘ

### 6.1 Protein, DNA and RNA chains ⓘ

In the following table, the column labelled ‘#RSRZ> 2’ contains the number (and percentage) of RSRZ outliers, followed by percent RSRZ outliers for the chain as percentile scores relative to all X-ray entries and entries of similar resolution. The OWAB column contains the minimum, median, 95<sup>th</sup> percentile and maximum values of the occupancy-weighted average B-factor per residue. The column labelled ‘Q< 0.9’ lists the number of (and percentage) of residues with an average occupancy less than 0.9.

Mol	Chain	Analysed	<RSRZ>	#RSRZ>2	OWAB(Å <sup>2</sup> )	Q<0.9
1	A	267/307 (86%)	-0.00	2 (0%) 84 52	44, 67, 130, 152	0
1	B	274/307 (89%)	-0.12	0 100 100	44, 67, 111, 129	0
All	All	541/614 (88%)	-0.06	2 (0%) 90 68	44, 67, 121, 152	0

All (2) RSRZ outliers are listed below:

Mol	Chain	Res	Type	RSRZ
1	A	466	GLY	2.5
1	A	448	ASP	2.2

### 6.2 Non-standard residues in protein, DNA, RNA chains ⓘ

There are no non-standard protein/DNA/RNA residues in this entry.

### 6.3 Carbohydrates ⓘ

There are no carbohydrates in this entry.

### 6.4 Ligands ⓘ

In the following table, the Atoms column lists the number of modelled atoms in the group and the number defined in the chemical component dictionary. LLDF column lists the quality of electron density of the group with respect to its neighbouring residues in protein, DNA or RNA chains. The B-factors column lists the minimum, median, 95<sup>th</sup> percentile and maximum values of B factors of atoms in the group. The column labelled ‘Q< 0.9’ lists the number of atoms with occupancy less than 0.9.

Mol	Type	Chain	Res	Atoms	RSR	LLDF	B-factors(Å <sup>2</sup> )	Q<0.9
2	2VX	B	801	29/29	0.24	1.12	47,56,67,70	0

*Continued on next page...*

*Continued from previous page...*

Mol	Type	Chain	Res	Atoms	RSR	LLDF	B-factors( $\text{\AA}^2$ )	Q<0.9
2	2VX	A	801	29/29	0.21	0.04	51,57,64,66	0

## 6.5 Other polymers ⓘ

There are no such residues in this entry.