



Full wwPDB X-ray Structure Validation Report

Feb 26, 2014 – 04:01 PM GMT

PDB ID : 2PUT
Title : The crystal structure of isomerase domain of glucosamine-6-phosphatesynthase from *Candida albicans*
Authors : Raczynska, J.; Olchow, J.; Milewski, S.; Rypniewski, W.
Deposited on : 2007-05-09
Resolution : 1.90 Å(reported)

This is a full wwPDB validation report for a publicly released PDB entry.
We welcome your comments at validation@mail.wwpdb.org
A user guide is available at <http://wwpdb.org/ValidationPDFNotes.html>

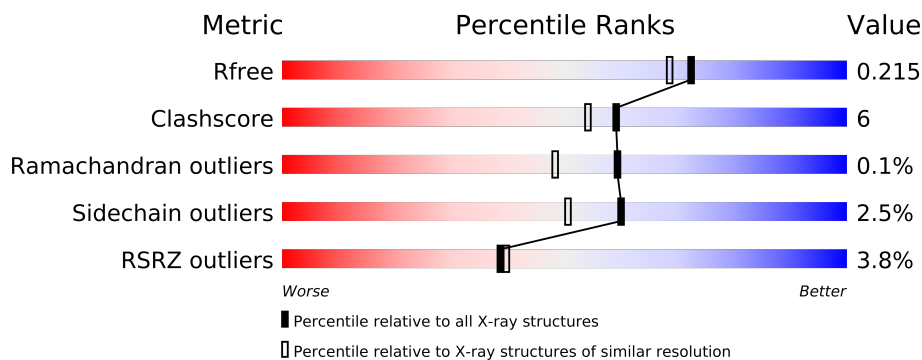
The following versions of software and data (see [references](#)) were used in the production of this report:

MolProbity : 4.02b-467
Mogul : 1.15 2013
Xtriage (Phenix) : dev-1323
EDS : stable22639
Percentile statistics : 21963
Refmac : 5.8.0049
CCP4 : 6.3.0 (Settle)
Ideal geometry (proteins) : Engh & Huber (2001)
Ideal geometry (DNA, RNA) : Parkinson et. al. (1996)
Validation Pipeline (wwPDB-VP) : stable22683

1 Overall quality at a glance

The reported resolution of this entry is 1.90 Å.

Percentile scores (ranging between 0-100) for global validation metrics of the entry are shown in the following graphic. The table shows the number of entries on which the scores are based.



Metric	Whole archive (#Entries)	Similar resolution (#Entries, resolution range(Å))
R_{free}	66092	3684 (1.90-1.90)
Clashscore	79885	4465 (1.90-1.90)
Ramachandran outliers	78287	4413 (1.90-1.90)
Sidechain outliers	78261	4414 (1.90-1.90)
RSRZ outliers	66119	3686 (1.90-1.90)

The table below summarises the geometric issues observed across the polymeric chains and their fit to the electron density. The red, orange, yellow and green segments on the lower bar indicate the fraction of residues that contain outliers for ≥ 3 , 2, 1 and 0 types of geometric quality criteria. The upper red bar (where present) indicates the fraction of residues that have poor fit to the electron density.

Mol	Chain	Length	Quality of chain
1	A	367	
1	B	367	
1	C	367	
1	D	367	

2 Entry composition i

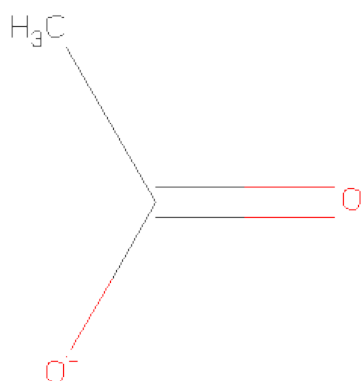
There are 6 unique types of molecules in this entry. The entry contains 11779 atoms, of which 0 are hydrogen and 0 are deuterium.

In the tables below, the ZeroOcc column contains the number of atoms modelled with zero occupancy, the AltConf column contains the number of residues with at least one atom in alternate conformation and the Trace column contains the number of residues modelled with at most 2 atoms.

- Molecule 1 is a protein called isomerase domain of glutamine-fructose-6-phosphatetransaminase (isomerizing).

Mol	Chain	Residues	Atoms					ZeroOcc	AltConf	Trace
1	A	339	Total	C	N	O	S	0	2	0
			2642	1669	459	497	17			
1	B	352	Total	C	N	O	S	0	2	0
			2742	1730	476	519	17			
1	C	350	Total	C	N	O	S	0	6	0
			2745	1735	474	518	18			
1	D	341	Total	C	N	O	S	0	4	0
			2670	1685	462	506	17			

- Molecule 2 is ACETATE ION (three-letter code: ACT) (formula: C₂H₃O₂).

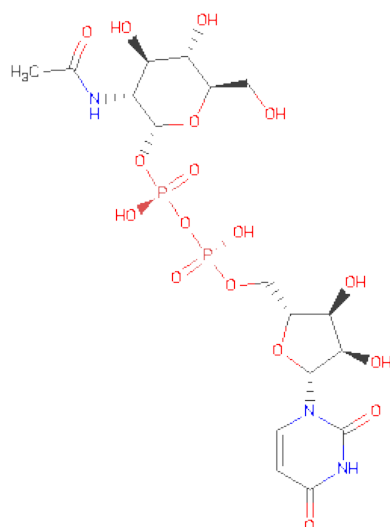


Mol	Chain	Residues	Atoms			ZeroOcc	AltConf
2	A	1	Total	C	O	0	0
			4	2	2		
2	C	1	Total	C	O	0	0
			4	2	2		

- Molecule 3 is SODIUM ION (three-letter code: NA) (formula: Na).

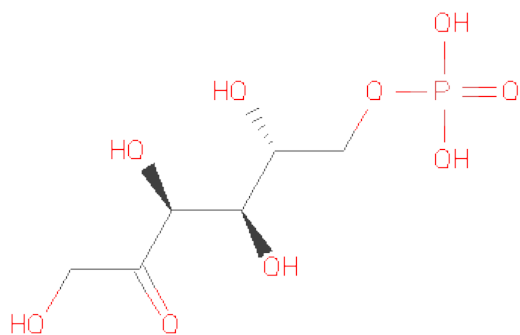
Mol	Chain	Residues	Atoms		ZeroOcc	AltConf
3	B	1	Total	Na	0	0
			1	1		
3	A	1	Total	Na	0	0
			1	1		
3	D	1	Total	Na	0	0
			1	1		
3	C	1	Total	Na	0	0
			1	1		

- Molecule 4 is URIDINE-DIPHOSPHATE-N-ACETYLGLUCOSAMINE (three-letter code: UD1) (formula: C₁₇H₂₇N₃O₁₇P₂).



Mol	Chain	Residues	Atoms					ZeroOcc	AltConf
4	A	1	Total	C	N	O	P	0	0
			39	17	3	17	2		
4	B	1	Total	C	N	O	P	0	0
			39	17	3	17	2		
4	C	1	Total	C	N	O	P	0	0
			39	17	3	17	2		
4	D	1	Total	C	N	O	P	0	0
			39	17	3	17	2		

- Molecule 5 is FRUCTOSE -6-PHOSPHATE (three-letter code: F6R) (formula: C₆H₁₃O₉P).



Mol	Chain	Residues	Atoms				ZeroOcc	AltConf
5	A	1	Total	C	O	P	0	0
			16	6	9	1		
5	B	1	Total	C	O	P	0	0
			16	6	9	1		
5	C	1	Total	C	O	P	0	0
			16	6	9	1		
5	D	1	Total	C	O	P	0	0
			16	6	9	1		

- Molecule 6 is water.

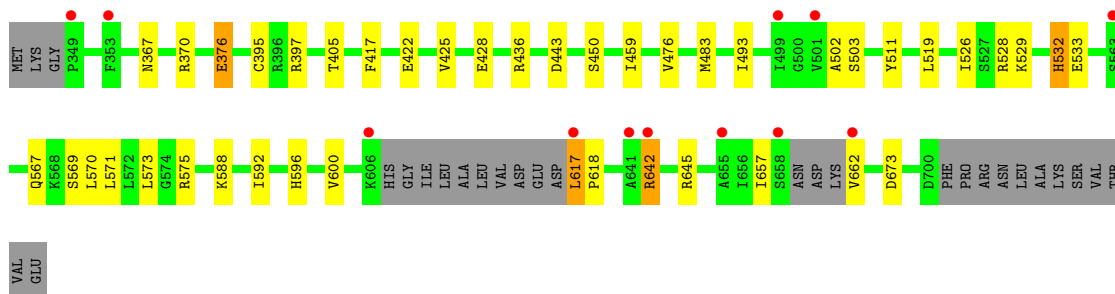
Mol	Chain	Residues	Atoms		ZeroOcc	AltConf
6	A	196	Total	O	0	0
			196	196		
6	B	189	Total	O	0	0
			189	189		
6	C	168	Total	O	0	0
			168	168		
6	D	195	Total	O	0	0
			195	195		

3 Residue-property plots

These plots are drawn for all protein, RNA and DNA chains in the entry. The first graphic for a chain summarises the proportions of errors displayed in the second graphic. The second graphic shows the sequence view annotated by issues in geometry and electron density. Residues are color-coded according to the number of geometric quality criteria for which they contain at least one outlier: green = 0, yellow = 1, orange = 2 and red = 3 or more. A red dot above a residue indicates a poor fit to the electron density ($RSRZ > 2$). Stretches of 2 or more consecutive residues without any outlier are shown as a green connector. Residues present in the sample, but not in the model, are shown in grey.

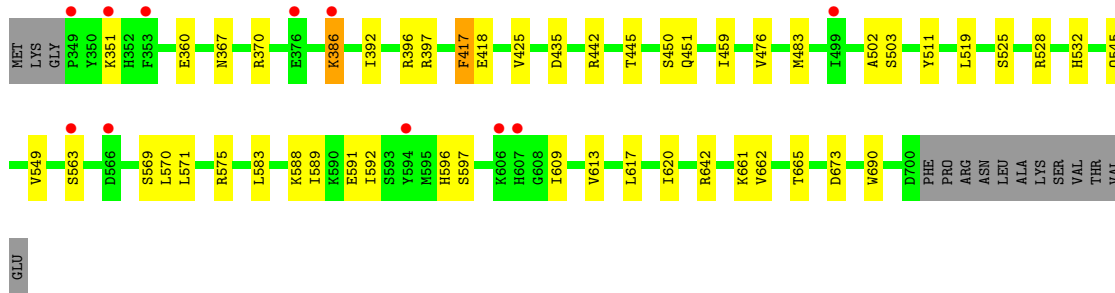
- Molecule 1: isomerase domain of glutamine-fructose-6-phosphatetransaminase (isomerizing)

Chain A: 



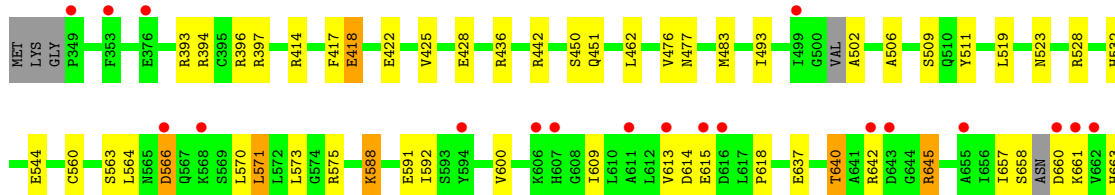
- Molecule 1: isomerase domain of glutamine-fructose-6-phosphatetransaminase (isomerizing)

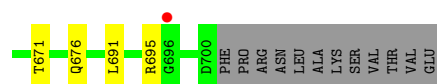
Chain B: 



- Molecule 1: isomerase domain of glutamine-fructose-6-phosphatetransaminase (isomerizing)

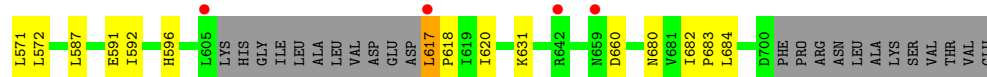
Chain C: 





- Molecule 1: isomerase domain of glutamine-fructose-6-phosphatetransaminase (isomerizing)

Chain D:



4 Data and refinement statistics

Property	Value	Source
Space group	P 1 21 1	Depositor
Cell constants a, b, c, α , β , γ	66.03Å 118.19Å 100.03Å 90.00° 91.78° 90.00°	Depositor
Resolution (Å)	19.94 – 1.90 19.94 – 1.90	Depositor EDS
% Data completeness (in resolution range)	100.0 (19.94-1.90) 99.7 (19.94-1.90)	Depositor EDS
R_{merge}	(Not available)	Depositor
R_{sym}	0.08	Depositor
$\langle I/\sigma(I) \rangle$ ¹	3.24 (at 1.90Å)	Xtriage
Refinement program	REFMAC 5.2	Depositor
R, R_{free}	0.171 , 0.215 0.171 , 0.215	Depositor DCC
R_{free} test set	2419 reflections (2.06%)	DCC
Wilson B-factor (Å ²)	22.0	Xtriage
Anisotropy	0.069	Xtriage
Bulk solvent k_{sol} (e/Å ³), B_{sol} (Å ²)	0.38 , 46.1	EDS
Estimated twinning fraction	0.055 for h,-k,-l	Xtriage
L-test for twinning	$\langle L \rangle = 0.48$, $\langle L^2 \rangle = 0.31$	Xtriage
Outliers	1 of 120111 reflections (0.001%)	Xtriage
F_o, F_c correlation	0.96	EDS
Total number of atoms	11779	wwPDB-VP
Average B, all atoms (Å ²)	25.0	wwPDB-VP

Xtriage's analysis on translational NCS is as follows: *The largest off-origin peak in the Patterson function is 4.06% of the height of the origin peak. No significant pseudotranslation is detected.*

¹Intensities estimated from amplitudes.

5 Model quality i

5.1 Standard geometry i

Bond lengths and bond angles in the following residue types are not validated in this section: NA, UD1, F6R, ACT

The Z score for a bond length (or angle) is the number of standard deviations the observed value is removed from the expected value. A bond length (or angle) with $|Z| > 5$ is considered an outlier worth inspection. RMSZ is the root-mean-square of all Z scores of the bond lengths (or angles).

Mol	Chain	Bond lengths		Bond angles	
		RMSZ	# Z >5	RMSZ	# Z >5
1	A	0.82	0/2687	0.83	2/3627 (0.1%)
1	B	0.78	0/2790	0.81	4/3770 (0.1%)
1	C	0.79	2/2803 (0.1%)	0.78	1/3783 (0.0%)
1	D	0.81	0/2722	0.84	1/3676 (0.0%)
All	All	0.80	2/11002 (0.0%)	0.82	8/14856 (0.1%)

Chiral center outliers are detected by calculating the chiral volume of a chiral center and verifying if the center is modelled as a planar moiety or with the opposite hand. A planarity outlier is detected by checking planarity of atoms in a peptide group, atoms in a mainchain group or atoms of a sidechain that are expected to be planar.

Mol	Chain	#Chirality outliers	#Planarity outliers
1	B	0	1

All (2) bond length outliers are listed below:

Mol	Chain	Res	Type	Atoms	Z	Observed(Å)	Ideal(Å)
1	C	418	GLU	CD-OE1	5.75	1.31	1.25
1	C	418	GLU	CG-CD	5.04	1.59	1.51

All (8) bond angle outliers are listed below:

Mol	Chain	Res	Type	Atoms	Z	Observed(°)	Ideal(°)
1	B	662	VAL	N-CA-C	-8.78	87.28	111.00
1	B	575	ARG	NE-CZ-NH1	6.62	123.61	120.30
1	A	673	ASP	CB-CG-OD1	6.16	123.84	118.30
1	D	411	LEU	CB-CG-CD1	-5.73	101.26	111.00
1	B	673	ASP	CB-CG-OD1	5.63	123.37	118.30
1	B	583	LEU	CB-CG-CD1	-5.25	102.07	111.00
1	A	673	ASP	CB-CG-OD2	-5.24	113.58	118.30

Continued on next page...

Continued from previous page...

Mol	Chain	Res	Type	Atoms	Z	Observed(°)	Ideal(°)
1	C	575	ARG	NE-CZ-NH2	-5.21	117.69	120.30

There are no chirality outliers.

All (1) planarity outliers are listed below:

Mol	Chain	Res	Type	Group
1	B	661	LYS	Peptide

5.2 Close contacts

In the following table, the Non-H and H(model) columns list the number of non-hydrogen atoms and hydrogen atoms in the chain respectively. The H(added) column lists the number of hydrogens added by MolProbity. The Clashes column lists the number of clashes within the asymmetric unit, and the number in parentheses is this value normalized per 1000 atoms of the molecule in the chain. The Symm-Clashes column gives symmetry related clashes, in the same way as for the Clashes column.

Mol	Chain	Non-H	H(model)	H(added)	Clashes	Symm-Clashes
1	A	2642	0	2702	34	0
1	B	2742	0	2798	32	0
1	C	2745	0	2812	42	0
1	D	2670	0	2725	32	0
2	A	4	0	3	0	0
2	C	4	0	3	0	0
3	A	1	0	0	0	0
3	B	1	0	0	0	0
3	C	1	0	0	0	0
3	D	1	0	0	0	0
4	A	39	0	25	1	0
4	B	39	0	25	0	0
4	C	39	0	25	1	0
4	D	39	0	25	1	0
5	A	16	0	11	1	0
5	B	16	0	11	1	0
5	C	16	0	11	1	0
5	D	16	0	11	1	0
6	A	196	0	0	4	0
6	B	189	0	0	4	0
6	C	168	0	0	4	0
6	D	195	0	0	7	0
All	All	11779	0	11187	135	0

Clashscore is defined as the number of clashes calculated for the entry per 1000 atoms (including hydrogens) of the entry. The overall clashscore for this entry is 6.

All (135) close contacts within the same asymmetric unit are listed below.

Atom-1	Atom-2	Distance(Å)	Clash(Å)
1:B:459:ILE:HD13	1:B:483:MET:SD	1.92	1.10
1:C:502:ALA:HB3	1:C:592:ILE:HD11	1.34	1.08
1:B:386:LYS:HA	6:B:5565:HOH:O	1.54	1.07
1:C:502:ALA:CB	1:C:592:ILE:HD11	1.87	1.04
1:A:493:ILE:HD11	6:A:5691:HOH:O	1.71	0.90
1:C:451[B]:GLN:HE22	1:C:493:ILE:HD11	1.36	0.88
1:A:642:ARG:HG3	1:A:642:ARG:O	1.71	0.87
1:B:351:LYS:HE3	1:B:690:TRP:HH2	1.40	0.85
1:B:502:ALA:HB2	1:B:592:ILE:HD11	1.59	0.83
1:A:567:GLN:HG3	1:A:618:PRO:HG3	1.63	0.79
1:C:451[B]:GLN:NE2	1:C:493:ILE:HD11	2.02	0.74
1:C:428:GLU:OE1	1:C:436[A]:ARG:NH2	2.20	0.73
1:A:395:CYS:HB3	1:C:442[B]:ARG:NH1	2.04	0.72
1:B:351:LYS:HE3	1:B:690:TRP:CH2	2.25	0.72
1:B:591:GLU:OE1	5:B:5004:F6R:H1C1	1.90	0.71
1:A:570:LEU:HD13	1:A:618:PRO:HB2	1.74	0.70
1:C:591:GLU:OE1	5:C:5005:F6R:H1C1	1.92	0.69
1:A:526:ILE:HD13	1:D:526:ILE:HG12	1.75	0.69
1:D:428:GLU:OE1	1:D:436[A]:ARG:NH2	2.25	0.68
1:D:350:TYR:HD2	1:D:356:LYS:HE3	1.58	0.68
1:B:665:THR:HG23	6:B:5418:HOH:O	1.93	0.68
1:B:502:ALA:CB	1:B:592:ILE:HD11	2.24	0.67
1:D:591[A]:GLU:OE1	5:D:5006:F6R:H1C1	1.95	0.67
1:B:571:LEU:HG	1:B:617:LEU:HD21	1.76	0.66
1:A:376:GLU:CD	1:A:376:GLU:H	2.00	0.66
1:A:428:GLU:OE1	1:A:436[A]:ARG:NH2	2.26	0.64
1:D:631:LYS:HE2	6:D:5188:HOH:O	1.99	0.63
1:C:691:LEU:O	1:C:695:ARG:HD2	1.98	0.63
1:B:418:GLU:OE2	6:B:5682:HOH:O	2.15	0.63
1:A:502:ALA:HB2	1:A:592:ILE:HD11	1.80	0.62
1:A:645:ARG:HE	1:A:662:VAL:HG11	1.64	0.62
1:A:502:ALA:CB	1:A:592:ILE:HD11	2.31	0.60
1:A:367:ASN:OD1	1:A:370:ARG:NH2	2.34	0.60
1:A:596:HIS:CD2	1:B:609:ILE:HD12	2.36	0.60
1:D:660:ASP:O	6:D:5114:HOH:O	2.17	0.59
1:B:571:LEU:HD21	6:B:5738:HOH:O	2.03	0.59
1:A:459:ILE:CD1	1:A:483:MET:HG2	2.34	0.58
1:C:451[B]:GLN:CD	1:C:477:ASN:HB2	2.23	0.58
1:A:459:ILE:HD13	1:A:483:MET:HG2	1.87	0.57

Continued on next page...

Continued from previous page...

Atom-1	Atom-2	Distance(Å)	Clash(Å)
1:D:502:ALA:HB2	1:D:592:ILE:HD11	1.87	0.56
1:D:386:LYS:HE2	6:D:5012:HOH:O	2.05	0.56
1:D:350:TYR:CD2	1:D:356:LYS:HE3	2.40	0.56
1:D:587:LEU:HD12	1:D:591[B]:GLU:HG3	1.87	0.55
1:A:422:GLU:OE2	1:A:528:ARG:NH2	2.39	0.55
1:C:566:ASP:OD1	1:C:566:ASP:N	2.36	0.55
1:C:502:ALA:HB2	1:C:592:ILE:HD11	1.84	0.54
1:B:525:SER:OG	1:B:528:ARG:HG2	2.07	0.54
1:A:571:LEU:HG	1:A:617:LEU:CD2	2.37	0.54
1:A:395:CYS:HB3	1:C:442[B]:ARG:HH12	1.68	0.53
1:C:637:GLU:HG3	6:C:5626:HOH:O	2.08	0.53
1:B:459:ILE:CD1	1:B:483:MET:SD	2.83	0.53
1:C:502:ALA:CB	1:C:592:ILE:CD1	2.76	0.52
1:C:637:GLU:O	1:C:640:THR:HG22	2.08	0.52
1:B:613:VAL:O	1:B:642:ARG:NH2	2.43	0.52
1:C:544:GLU:HG3	6:C:5568:HOH:O	2.10	0.52
1:C:451[B]:GLN:CD	1:C:506:ALA:HB1	2.30	0.52
1:D:572:LEU:HD21	1:D:684:LEU:HD11	1.92	0.51
1:D:570:LEU:HD21	1:D:620:ILE:HD12	1.93	0.51
1:C:493:ILE:HD12	1:C:509[B]:SER:OG	2.10	0.51
1:A:571:LEU:HG	1:A:617:LEU:HD22	1.93	0.51
1:B:396:ARG:HD3	6:D:5077:HOH:O	2.11	0.51
1:A:569:SER:OG	1:A:596:HIS:ND1	2.38	0.50
1:A:526:ILE:CD1	1:D:526:ILE:HG12	2.40	0.50
1:C:609:ILE:O	1:C:613:VAL:HG13	2.11	0.50
1:B:417:PHE:HB3	1:B:425:VAL:HG21	1.93	0.50
1:C:417:PHE:HB3	1:C:425:VAL:HG21	1.94	0.49
1:C:462:LEU:HD22	1:C:483[A]:MET:CE	2.42	0.49
6:A:5727:HOH:O	1:C:394:ARG:HG2	2.13	0.49
1:B:525:SER:CB	1:B:528:ARG:HG2	2.42	0.49
4:A:5002:UD1:H5'2	4:A:5002:UD1:H8'2	1.94	0.49
1:B:392:ILE:HG23	1:B:445:THR:HG21	1.95	0.49
1:A:575:ARG:HD3	1:B:435:ASP:OD2	2.13	0.48
1:A:443:ASP:CG	6:A:5727:HOH:O	2.51	0.48
4:C:5004:UD1:H8'2	4:C:5004:UD1:H5'2	1.95	0.48
4:D:5005:UD1:H8'2	4:D:5005:UD1:H5'2	1.95	0.48
1:B:503:SER:O	1:B:588:LYS:CE	2.62	0.48
1:A:519:LEU:O	1:A:532:HIS:HE1	1.96	0.47
1:A:450:SER:O	1:A:476:VAL:HA	2.14	0.47
1:D:551:LYS:CE	6:D:5198:HOH:O	2.61	0.47
1:D:360:GLU:O	1:D:360:GLU:HG2	2.13	0.47
1:D:571:LEU:HG	1:D:617:LEU:HD11	1.97	0.46

Continued on next page...

Continued from previous page...

Atom-1	Atom-2	Distance(Å)	Clash(Å)
1:D:569:SER:O	1:D:618:PRO:HD2	2.15	0.46
1:A:376:GLU:N	1:A:376:GLU:CD	2.67	0.46
1:C:396:ARG:HD3	6:C:5164:HOH:O	2.14	0.46
1:B:545:GLN:O	1:B:549:VAL:HG23	2.16	0.46
1:C:462:LEU:HD22	1:C:483[A]:MET:HE3	1.98	0.46
1:B:459:ILE:HD11	1:B:483:MET:HG2	1.98	0.46
1:A:529:LYS:O	1:A:533:GLU:HG3	2.16	0.46
1:B:360:GLU:HG2	1:B:360:GLU:O	2.15	0.45
6:A:5727:HOH:O	1:C:394:ARG:CG	2.64	0.45
1:D:417:PHE:HB3	1:D:425:VAL:HG21	1.98	0.45
1:C:544:GLU:CG	6:C:5568:HOH:O	2.63	0.45
1:D:453:GLY:O	1:D:483:MET:HG2	2.16	0.45
1:C:573:LEU:HD23	1:C:600:VAL:HB	1.97	0.45
1:B:367:ASN:OD1	1:B:370:ARG:NH2	2.49	0.45
1:A:405:THR:OG1	5:A:5003:F6R:H1C2	2.16	0.45
1:A:417:PHE:HB3	1:A:425:VAL:HG21	1.98	0.45
1:C:658:SER:HB2	1:C:661:LYS:H	1.82	0.45
1:C:609:ILE:HD12	1:D:596:HIS:CD2	2.52	0.45
1:B:450:SER:O	1:B:476:VAL:HA	2.17	0.45
1:A:459:ILE:CD1	1:A:483:MET:CG	2.95	0.44
1:A:573:LEU:HD23	1:A:600:VAL:HB	1.98	0.44
1:D:502:ALA:CB	1:D:592:ILE:HD11	2.46	0.44
1:B:569:SER:HA	1:B:596:HIS:O	2.18	0.44
1:B:519:LEU:O	1:B:532:HIS:HE1	2.01	0.43
1:C:645:ARG:O	1:C:645:ARG:HD3	2.18	0.43
1:D:682:ILE:HB	1:D:683:PRO:HD3	2.01	0.43
1:D:367:ASN:OD1	1:D:370:ARG:CZ	2.66	0.43
1:D:551:LYS:HE2	6:D:5198:HOH:O	2.18	0.43
1:C:450:SER:O	1:C:476[A]:VAL:HA	2.19	0.43
1:C:422:GLU:OE2	1:C:528:ARG:NH2	2.50	0.43
1:C:393:ARG:NH2	1:C:523:ASN:OD1	2.51	0.43
1:C:560:CYS:HA	1:C:564:LEU:HB2	2.00	0.42
1:D:476:VAL:O	1:D:492:HIS:HA	2.19	0.42
1:C:414:ARG:O	1:C:418:GLU:HG3	2.19	0.42
1:D:519:LEU:O	1:D:532:HIS:HE1	2.02	0.42
1:A:569:SER:O	1:A:618:PRO:HD2	2.19	0.42
1:C:657:ILE:HG13	1:C:663:HIS:CE1	2.55	0.42
1:C:571:LEU:HD11	1:C:609:ILE:HD11	2.01	0.42
1:B:570:LEU:HD22	1:B:589:ILE:CD1	2.49	0.42
1:B:570:LEU:O	1:B:597:SER:HA	2.20	0.42
1:A:519:LEU:O	1:A:532:HIS:CE1	2.73	0.42
1:C:450:SER:O	1:C:476[B]:VAL:HA	2.20	0.41

Continued on next page...

Continued from previous page...

Atom-1	Atom-2	Distance(Å)	Clash(Å)
1:C:570:LEU:HB2	1:C:618:PRO:HB2	2.01	0.41
1:C:519:LEU:O	1:C:532:HIS:HE1	2.04	0.41
1:D:519:LEU:O	1:D:532:HIS:CE1	2.74	0.41
1:D:569:SER:HB2	1:D:596:HIS:ND1	2.35	0.41
1:D:680:ASN:O	1:D:683:PRO:HD2	2.20	0.41
1:C:671:THR:CG2	1:C:676:GLN:HA	2.51	0.41
1:C:502:ALA:HB1	1:C:588:LYS:HE2	2.01	0.41
1:D:418[A]:GLU:HG3	1:D:425:VAL:HB	2.01	0.41
1:B:442[B]:ARG:NH2	1:D:395:CYS:HB3	2.35	0.41
1:B:570:LEU:HD21	1:B:620:ILE:HD12	2.04	0.40
1:D:551:LYS:HE3	6:D:5198:HOH:O	2.21	0.40
1:A:503:SER:O	1:A:588:LYS:CE	2.69	0.40

There are no symmetry-related clashes.

5.3 Torsion angles

5.3.1 Protein backbone ⓘ

In the following table, the Percentiles column shows the percent Ramachandran outliers of the chain as a percentile score with respect to all X-ray entries followed by that with respect to entries of similar resolution. The Analysed column shows the number of residues for which the backbone conformation was analysed, and the total number of residues.

Mol	Chain	Analysed	Favoured	Allowed	Outliers	Percentiles	
1	A	335/367 (91%)	331 (99%)	4 (1%)	0	100	100
1	B	352/367 (96%)	346 (98%)	5 (1%)	1 (0%)	50	37
1	C	350/367 (95%)	345 (99%)	5 (1%)	0	100	100
1	D	341/367 (93%)	339 (99%)	2 (1%)	0	100	100
All	All	1378/1468 (94%)	1361 (99%)	16 (1%)	1 (0%)	59	48

All (1) Ramachandran outliers are listed below:

Mol	Chain	Res	Type
1	B	386	LYS

5.3.2 Protein sidechains ⓘ

In the following table, the Percentiles column shows the percent sidechain outliers of the chain as a percentile score with respect to all X-ray entries followed by that with respect to entries of similar resolution. The Analysed column shows the number of residues for which the sidechain conformation was analysed, and the total number of residues.

Mol	Chain	Analysed	Rotameric	Outliers	Percentiles	
1	A	297/319 (93%)	290 (98%)	7 (2%)	61	53
1	B	308/319 (97%)	302 (98%)	6 (2%)	69	63
1	C	310/319 (97%)	298 (96%)	12 (4%)	43	30
1	D	301/319 (94%)	295 (98%)	6 (2%)	68	61
All	All	1216/1276 (95%)	1185 (98%)	31 (2%)	60	50

All (31) residues with a non-rotameric sidechain are listed below:

Mol	Chain	Res	Type
1	A	376	GLU
1	A	397	ARG
1	A	511	TYR
1	A	532	HIS
1	A	617	LEU
1	A	642	ARG
1	A	657	ILE
1	B	397[A]	ARG
1	B	397[B]	ARG
1	B	417	PHE
1	B	451	GLN
1	B	511	TYR
1	B	563	SER
1	C	397	ARG
1	C	511	TYR
1	C	563	SER
1	C	566	ASP
1	C	571	LEU
1	C	588	LYS
1	C	614	ASP
1	C	615	GLU
1	C	640	THR
1	C	642	ARG
1	C	645	ARG
1	C	660	ASP
1	D	356	LYS

Continued on next page...

Continued from previous page...

Mol	Chain	Res	Type
1	D	397	ARG
1	D	417	PHE
1	D	511	TYR
1	D	532	HIS
1	D	617	LEU

Some sidechains can be flipped to improve hydrogen bonding and reduce clashes. All (1) such sidechains are listed below:

Mol	Chain	Res	Type
1	D	377	ASN

5.3.3 RNA ⓘ

There are no RNA chains in this entry.

5.4 Non-standard residues in protein, DNA, RNA chains ⓘ

There are no non-standard protein/DNA/RNA residues in this entry.

5.5 Carbohydrates ⓘ

There are no carbohydrates in this entry.

5.6 Ligand geometry ⓘ

Of 14 ligands modelled in this entry, 4 are monoatomic - leaving 10 for Mogul analysis.

In the following table, the Counts columns list the number of bonds (or angles) for which Mogul statistics could be retrieved, the number of bonds (or angles) that are observed in the model and the number of bonds (or angles) that are defined in the chemical component dictionary. The Link column lists molecule types, if any, to which the group is linked. The Z score for a bond length (or angle) is the number of standard deviations the observed value is removed from the expected value. A bond length (or angle) with $|Z| > 2$ is considered an outlier worth inspection. RMSZ is the root-mean-square of all Z scores of the bond lengths (or angles).

Mol	Type	Chain	Res	Link	Bond lengths			Bond angles		
					Counts	RMSZ	# Z > 2	Counts	RMSZ	# Z > 2
4	UD1	A	5002	3	41,41,41	1.01	3 (7%)	58,62,62	1.05	1 (1%)
5	F6R	A	5003	-	15,15,15	0.87	0	21,21,21	1.39	5 (23%)

Mol	Type	Chain	Res	Link	Bond lengths			Bond angles		
					Counts	RMSZ	# Z > 2	Counts	RMSZ	# Z > 2
2	ACT	A	713	-	1,3,3	2.18	1 (100%)	0,3,3	0.00	-
4	UD1	B	5003	3	41,41,41	1.08	4 (9%)	58,62,62	1.19	5 (8%)
5	F6R	B	5004	-	15,15,15	0.70	0	21,21,21	1.49	5 (23%)
4	UD1	C	5004	3	41,41,41	1.19	6 (14%)	58,62,62	0.96	1 (1%)
5	F6R	C	5005	-	15,15,15	1.01	1 (6%)	21,21,21	1.34	3 (14%)
2	ACT	C	713	-	1,3,3	2.42	1 (100%)	0,3,3	0.00	-
4	UD1	D	5005	3	41,41,41	1.13	4 (9%)	58,62,62	1.20	3 (5%)
5	F6R	D	5006	-	15,15,15	1.14	2 (13%)	21,21,21	1.29	3 (14%)

In the following table, the Chirals column lists the number of chiral outliers, the number of chiral centers analysed, the number of these observed in the model and the number defined in the chemical component dictionary. Similar counts are reported in the Torsion and Rings columns. '-' means no outliers of that kind were identified.

Mol	Type	Chain	Res	Link	Chirals	Torsions	Rings
4	UD1	A	5002	3	-	0/25/63/63	0/3/3/3
5	F6R	A	5003	-	-	0/20/20/20	0/0/0/0
2	ACT	A	713	-	-	0/0/0/0	0/0/0/0
4	UD1	B	5003	3	-	0/25/63/63	0/3/3/3
5	F6R	B	5004	-	-	0/20/20/20	0/0/0/0
4	UD1	C	5004	3	-	0/25/63/63	0/3/3/3
5	F6R	C	5005	-	-	0/20/20/20	0/0/0/0
2	ACT	C	713	-	-	0/0/0/0	0/0/0/0
4	UD1	D	5005	3	-	0/25/63/63	0/3/3/3
5	F6R	D	5006	-	-	0/20/20/20	0/0/0/0

All (22) bond length outliers are listed below:

Mol	Chain	Res	Type	Atoms	Z	Observed(Å)	Ideal(Å)
4	D	5005	UD1	C2-N1	-3.78	1.34	1.38
4	C	5004	UD1	C2-N1	-3.65	1.34	1.38
4	A	5002	UD1	C6-C5	3.37	1.41	1.36
4	A	5002	UD1	C2-N1	-3.25	1.34	1.38
4	B	5003	UD1	O4B-C1B	3.07	1.46	1.41
4	D	5005	UD1	O4B-C1B	2.82	1.45	1.41
4	B	5003	UD1	C6-C5	2.77	1.40	1.36
4	C	5004	UD1	C2-N3	-2.64	1.32	1.37
5	C	5005	F6R	P-O3P	2.58	1.59	1.51
4	C	5004	UD1	C2B-C1B	-2.57	1.49	1.53
2	C	713	ACT	CH3-C	2.42	1.52	1.48

Continued on next page...

Continued from previous page...

Mol	Chain	Res	Type	Atoms	Z	Observed(Å)	Ideal(Å)
4	D	5005	UD1	C4-N3	-2.37	1.33	1.37
4	C	5004	UD1	O4B-C1B	2.29	1.44	1.41
5	D	5006	F6R	P-O3P	2.25	1.58	1.51
4	B	5003	UD1	C2-N1	-2.22	1.36	1.38
4	B	5003	UD1	C2B-C1B	-2.20	1.50	1.53
2	A	713	ACT	CH3-C	2.18	1.51	1.48
4	A	5002	UD1	O4B-C1B	2.14	1.44	1.41
4	D	5005	UD1	C2B-C1B	-2.14	1.50	1.53
5	D	5006	F6R	P-O1P	-2.06	1.47	1.54
4	C	5004	UD1	C4-N3	-2.04	1.33	1.37
4	C	5004	UD1	PB-O2B	-2.02	1.46	1.55

All (26) bond angle outliers are listed below:

Mol	Chain	Res	Type	Atoms	Z	Observed(°)	Ideal(°)
4	D	5005	UD1	N3-C2-N1	5.13	120.25	115.97
4	B	5003	UD1	N3-C2-N1	4.43	119.67	115.97
4	A	5002	UD1	N3-C2-N1	3.93	119.26	115.97
5	C	5005	F6R	C4-C3-C2	-3.86	105.77	110.77
5	B	5004	F6R	O1P-P-O6	3.44	116.13	106.65
5	D	5006	F6R	O3-C3-C2	-2.98	106.30	111.16
5	A	5003	F6R	C4-C3-C2	-2.93	106.98	110.77
4	B	5003	UD1	C2-N1-C1B	2.84	119.99	118.21
5	B	5004	F6R	O3-C3-C4	-2.61	104.95	110.49
5	A	5003	F6R	O4-C4-C3	-2.51	104.58	109.19
5	C	5005	F6R	C1-C2-C3	2.50	121.00	116.26
5	C	5005	F6R	O1-C1-C2	-2.33	106.85	113.14
5	B	5004	F6R	C4-C3-C2	-2.33	107.75	110.77
5	B	5004	F6R	C1-C2-C3	2.28	120.57	116.26
4	C	5004	UD1	O6'-C6'-C5'	-2.27	103.54	111.36
5	D	5006	F6R	O1P-P-O3P	2.25	117.80	110.44
5	B	5004	F6R	O1-C1-C2	-2.20	107.21	113.14
4	B	5003	UD1	O5'-C5'-C4'	2.19	113.81	109.76
4	B	5003	UD1	C5-C4-N3	2.18	120.81	116.70
4	B	5003	UD1	O2B-PB-O1'	2.18	114.85	105.71
5	A	5003	F6R	O3-C3-C2	-2.17	107.63	111.16
5	D	5006	F6R	C4-C3-C2	-2.16	107.97	110.77
5	A	5003	F6R	C1-C2-C3	2.08	120.20	116.26
5	A	5003	F6R	O1P-P-O6	2.08	112.38	106.65
4	D	5005	UD1	C4'-C3'-C2'	2.01	113.30	110.44
4	D	5005	UD1	O3B-C3B-C4B	-2.00	105.18	111.08

There are no chirality outliers.

There are no torsion outliers.

There are no ring outliers.

5.7 Other polymers ⓘ

There are no such residues in this entry.

5.8 Polymer linkage issues

There are no chain breaks in this entry.

6 Fit of model and data ⓘ

6.1 Protein, DNA and RNA chains ⓘ

In the following table, the column labelled ‘#RSRZ> 2’ contains the number (and percentage) of RSRZ outliers, followed by percent RSRZ outliers for the chain as percentile scores relative to all X-ray entries and entries of similar resolution. The OWAB column contains the minimum, median, 95th percentile and maximum values of the occupancy-weighted average B-factor per residue. The column labelled ‘Q< 0.9’ lists the number of (and percentage) of residues with an average occupancy less than 0.9.

Mol	Chain	Analysed	<RSRZ>	#RSRZ>2	OWAB(Å ²)	Q<0.9
1	A	339/367 (92%)	-0.02	12 (3%) 42 43	12, 22, 40, 53	0
1	B	352/367 (95%)	-0.00	11 (3%) 47 48	14, 22, 46, 58	0
1	C	350/367 (95%)	0.09	20 (5%) 23 23	13, 24, 50, 63	0
1	D	341/367 (92%)	-0.07	10 (2%) 49 50	13, 22, 37, 47	0
All	All	1382/1468 (94%)	-0.00	53 (3%) 38 40	12, 22, 44, 63	0

All (53) RSRZ outliers are listed below:

Mol	Chain	Res	Type	RSRZ
1	C	615	GLU	5.2
1	A	499	ILE	5.0
1	C	660	ASP	4.6
1	C	594	TYR	4.0
1	D	499	ILE	4.0
1	B	607	HIS	3.7
1	B	594	TYR	3.7
1	B	499	ILE	3.7
1	C	655	ALA	3.7
1	C	607	HIS	3.6
1	A	501	VAL	3.6
1	A	642	ARG	3.5
1	B	566	ASP	3.4
1	B	386	LYS	3.4
1	A	606	LYS	3.3
1	A	658	SER	3.3
1	D	376	GLU	3.3
1	A	349	PRO	3.3
1	D	659	ASN	3.3
1	B	606	LYS	3.2
1	C	662	VAL	3.2

Continued on next page...

Continued from previous page...

Mol	Chain	Res	Type	RSRZ
1	B	563	SER	3.0
1	C	606	LYS	3.0
1	C	642	ARG	2.9
1	C	499	ILE	2.9
1	D	617	LEU	2.9
1	C	611	ALA	2.9
1	C	616	ASP	2.8
1	D	349	PRO	2.8
1	A	655	ALA	2.7
1	A	563	SER	2.7
1	A	641	ALA	2.6
1	D	605	LEU	2.6
1	B	353	PHE	2.6
1	A	353	PHE	2.6
1	D	386	LYS	2.5
1	C	376	GLU	2.5
1	D	642	ARG	2.4
1	A	617	LEU	2.4
1	C	643	ASP	2.4
1	C	613	VAL	2.4
1	C	353	PHE	2.4
1	D	353	PHE	2.4
1	C	661	LYS	2.4
1	C	349	PRO	2.3
1	A	662	VAL	2.3
1	B	376	GLU	2.3
1	C	696	GLY	2.2
1	B	349	PRO	2.2
1	D	568	LYS	2.2
1	C	568	LYS	2.2
1	B	351	LYS	2.1
1	C	566	ASP	2.0

6.2 Non-standard residues in protein, DNA, RNA chains ⓘ

There are no non-standard protein/DNA/RNA residues in this entry.

6.3 Carbohydrates ⓘ

There are no carbohydrates in this entry.

6.4 Ligands ⓘ

In the following table, the Atoms column lists the number of modelled atoms in the group and the number defined in the chemical component dictionary. LLDF column lists the quality of electron density of the group with respect to its neighbouring residues in protein, DNA or RNA chains. The B-factors column lists the minimum, median, 95th percentile and maximum values of B factors of atoms in the group. The column labelled 'Q< 0.9' lists the number of atoms with occupancy less than 0.9.

Mol	Type	Chain	Res	Atoms	RSR	LLDF	B-factors(Å ²)	Q<0.9
5	F6R	C	5005	16/16	0.13	1.23	22,30,39,44	0
2	ACT	C	713	4/4	0.15	0.54	32,32,33,34	0
2	ACT	A	713	4/4	0.14	0.31	32,32,33,33	0
4	UD1	B	5003	39/39	0.12	0.24	16,24,53,56	0
5	F6R	B	5004	16/16	0.09	-0.00	15,22,36,36	0
4	UD1	D	5005	39/39	0.12	-0.02	17,24,44,46	0
5	F6R	A	5003	16/16	0.09	-0.08	17,22,30,30	0
4	UD1	A	5002	39/39	0.11	-0.14	18,24,45,50	0
4	UD1	C	5004	39/39	0.09	-0.39	14,23,28,37	0
5	F6R	D	5006	16/16	0.06	-1.00	18,23,27,28	0
3	NA	A	5001	1/1	0.07	-1.02	20,20,20,20	0
3	NA	B	5002	1/1	0.06	-1.08	19,19,19,19	0
3	NA	D	5004	1/1	0.07	-1.30	23,23,23,23	0
3	NA	C	5003	1/1	0.04	-2.51	20,20,20,20	0

6.5 Other polymers ⓘ

There are no such residues in this entry.