



Full wwPDB X-ray Structure Validation Report

Aug 12, 2014 – 05:44 PM EDT

PDB ID : 4PV1
Title : Cytochrome B6F structure from *M. lamosus* with the quinone analog inhibitor stigmatellin
Authors : Hasan, S.S.; Yamashita, E.; Cramer, W.A.
Deposited on : 2014-03-14
Resolution : 3.00 Å(reported)

This is a full wwPDB validation report for a publicly released PDB entry.
We welcome your comments at validation@mail.wwpdb.org
A user guide is available at <http://wwpdb.org/ValidationPDFNotes.html>

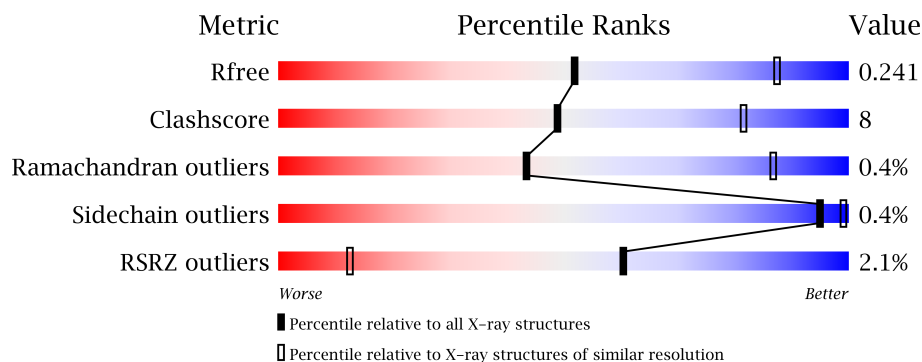
The following versions of software and data (see [references](#)) were used in the production of this report:

MolProbity : 4.02b-467
Mogul : 1.16 November 2013
Xtriage (Phenix) : dev-1439
EDS : stable23489
Percentile statistics : 21963
Refmac : 5.8.0049
CCP4 : 6.3.0 (Settle)
Ideal geometry (proteins) : Engh & Huber (2001)
Ideal geometry (DNA, RNA) : Parkinson et. al. (1996)
Validation Pipeline (wwPDB-VP) : stable23489

1 Overall quality at a glance

The reported resolution of this entry is 3.00 Å.

Percentile scores (ranging between 0-100) for global validation metrics of the entry are shown in the following graphic. The table shows the number of entries on which the scores are based.



Metric	Whole archive (#Entries)	Similar resolution (#Entries, resolution range(Å))
R_{free}	66092	1216 (3.00-3.00)
Clashscore	79885	1594 (3.00-3.00)
Ramachandran outliers	78287	1537 (3.00-3.00)
Sidechain outliers	78261	1540 (3.00-3.00)
RSRZ outliers	66119	1217 (3.00-3.00)

The table below summarises the geometric issues observed across the polymeric chains and their fit to the electron density. The red, orange, yellow and green segments on the lower bar indicate the fraction of residues that contain outliers for ≥ 3 , 2, 1 and 0 types of geometric quality criteria. The upper red bar (where present) indicates the fraction of residues that have poor fit to the electron density.

Mol	Chain	Length	Quality of chain
1	A	215	
2	B	160	
3	C	289	
4	D	179	
5	E	32	
6	F	35	
7	G	37	
8	H	29	

The following table lists non-polymeric compounds that are outliers for geometric or electron-density-fit criteria:

Mol	Type	Chain	Res	Geometry	Electron density
12	UMQ	A	306	-	X
12	UMQ	A	307	-	X
12	UMQ	B	203	-	X
13	SMA	A	308	-	X
14	7PH	A	309	-	X
15	8K6	B	201	-	X
17	OPC	B	205	-	X
17	OPC	D	203	-	X
17	OPC	E	101	-	X
20	BCR	G	101	-	X
9	MYS	A	301	-	X

2 Entry composition

There are 21 unique types of molecules in this entry. The entry contains 8049 atoms, of which 0 are hydrogen and 0 are deuterium.

In the tables below, the ZeroOcc column contains the number of atoms modelled with zero occupancy, the AltConf column contains the number of residues with at least one atom in alternate conformation and the Trace column contains the number of residues modelled with at most 2 atoms.

- Molecule 1 is a protein called Cytochrome b6.

Mol	Chain	Residues	Atoms					ZeroOcc	AltConf	Trace
1	A	213	Total	C	N	O	S	5	0	0
			1698	1132	270	286	10			

- Molecule 2 is a protein called Cytochrome b6-f complex subunit 4.

Mol	Chain	Residues	Atoms					ZeroOcc	AltConf	Trace
2	B	159	Total	C	N	O	S	2	0	0
			1241	836	192	208	5			

- Molecule 3 is a protein called Apocytochrome f.

Mol	Chain	Residues	Atoms					ZeroOcc	AltConf	Trace
3	C	288	Total	C	N	O	S	0	0	0
			2216	1415	369	424	8			

There is a discrepancy between the modelled and reference sequences:

Chain	Residue	Modelled	Actual	Comment	Reference
C	11	PRO	GLU	CONFLICT	UNP P83793

- Molecule 4 is a protein called Cytochrome b6-f complex iron-sulfur subunit.

Mol	Chain	Residues	Atoms					ZeroOcc	AltConf	Trace
4	D	158	Total	C	N	O	S	0	0	0
			1221	783	210	221	7			

- Molecule 5 is a protein called Cytochrome b6-f complex subunit 6.

Mol	Chain	Residues	Atoms				ZeroOcc	AltConf	Trace
5	E	28	Total	C	N	O	0	0	0
			215	156	29	30			

- Molecule 6 is a protein called Cytochrome b6-f complex subunit 7.

Mol	Chain	Residues	Atoms					ZeroOcc	AltConf	Trace
6	F	31	Total	C	N	O	S	0	0	0
			234	160	34	39	1			

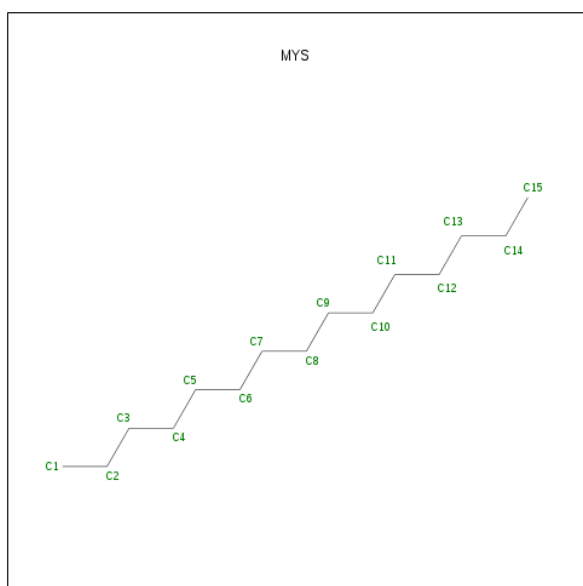
- Molecule 7 is a protein called Cytochrome b6-f complex subunit 5.

Mol	Chain	Residues	Atoms					ZeroOcc	AltConf	Trace
7	G	37	Total	C	N	O	S	4	0	0
			283	188	44	50	1			

- Molecule 8 is a protein called Cytochrome b6-f complex subunit 8.

Mol	Chain	Residues	Atoms					ZeroOcc	AltConf	Trace
8	H	28	Total	C	N	O	S	0	0	0
			222	151	35	35	1			

- Molecule 9 is PENTADECANE (three-letter code: MYS) (formula: C₁₅H₃₂).

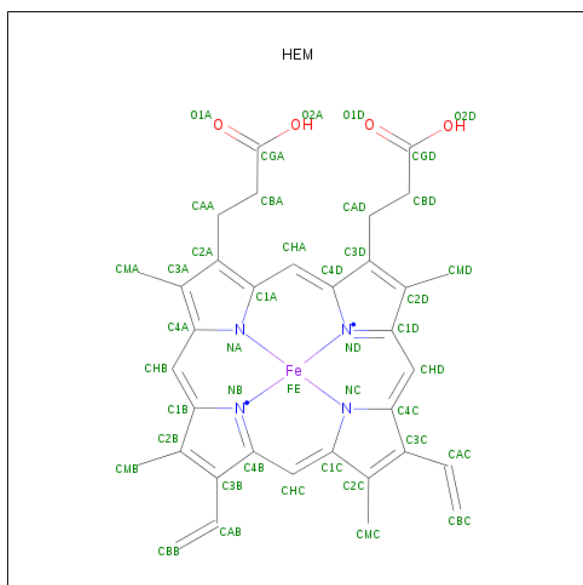


Mol	Chain	Residues	Atoms		ZeroOcc	AltConf
9	A	1	Total	C	0	0
			15	15		

- Molecule 10 is CADMIUM ION (three-letter code: CD) (formula: Cd).

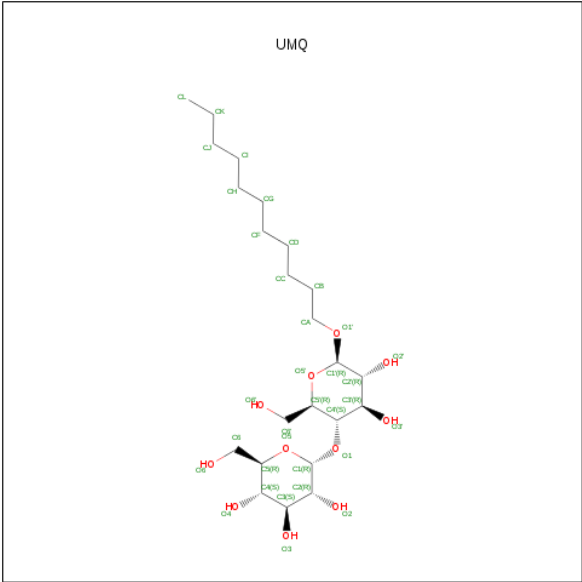
Mol	Chain	Residues	Atoms	ZeroOcc	AltConf
10	B	1	Total Cd 1 1	0	0
10	A	1	Total Cd 1 1	0	0

- Molecule 11 is PROTOPORPHYRIN IX CONTAINING FE (three-letter code: HEM) (formula: $C_{34}H_{32}FeN_4O_4$).



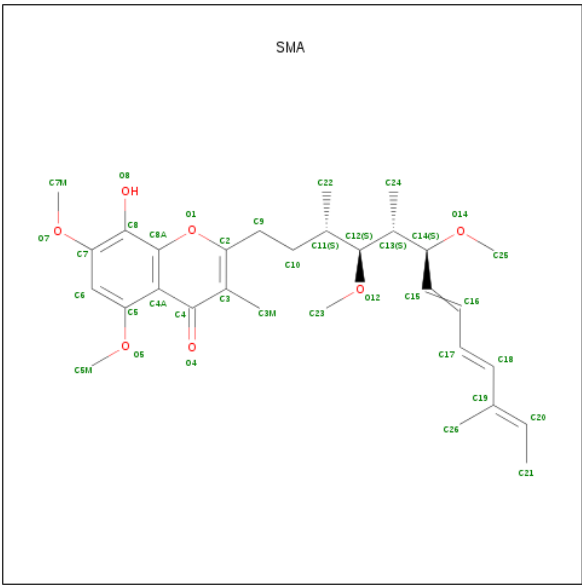
Mol	Chain	Residues	Atoms				ZeroOcc	AltConf	
11	A	1	Total 43	C 34	Fe 1	N 4	O 4	0	0
11	A	1	Total 43	C 34	Fe 1	N 4	O 4	0	0
11	A	1	Total 43	C 34	Fe 1	N 4	O 4	0	0
11	C	1	Total 43	C 34	Fe 1	N 4	O 4	0	0

- Molecule 12 is UNDECYL-MALTOSIDE (three-letter code: UMQ) (formula: $C_{23}H_{44}O_{11}$).



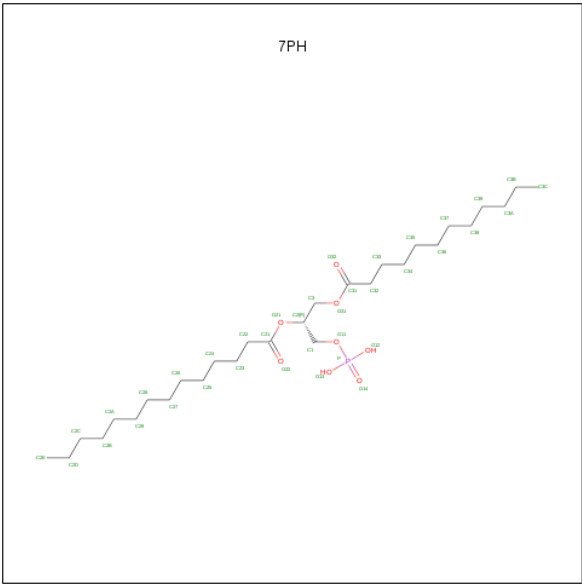
Mol	Chain	Residues	Atoms			ZeroOcc	AltConf
12	A	1	Total	C	O	6	0
			34	23	11		
12	A	1	Total	C	O	2	0
			34	23	11		
12	B	1	Total	C	O	0	0
			34	23	11		

- Molecule 13 is STIGMATELLIN A (three-letter code: SMA) (formula: C₃₀H₄₂O₇).



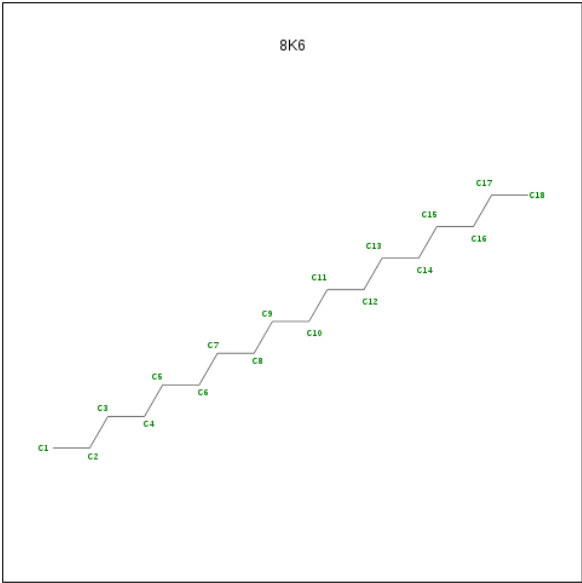
Mol	Chain	Residues	Atoms			ZeroOcc	AltConf
13	A	1	Total	C	O	3	0
			37	30	7		

- Molecule 14 is (1R)-2-(DODECANOYLOXY)-1-[(PHOSPHONOOXY)METHYL]ETHYLTETRADECANOATE (three-letter code: 7PH) (formula: C₂₉H₅₇O₈P).



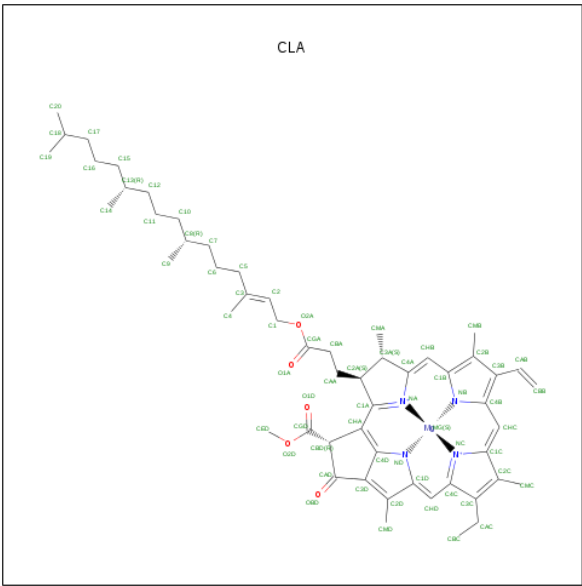
Mol	Chain	Residues	Atoms			ZeroOcc	AltConf
14	A	1	Total	C	O	3	0
			32	27	5		

- Molecule 15 is OCTADECANE (three-letter code: 8K6) (formula: C₁₈H₃₈).



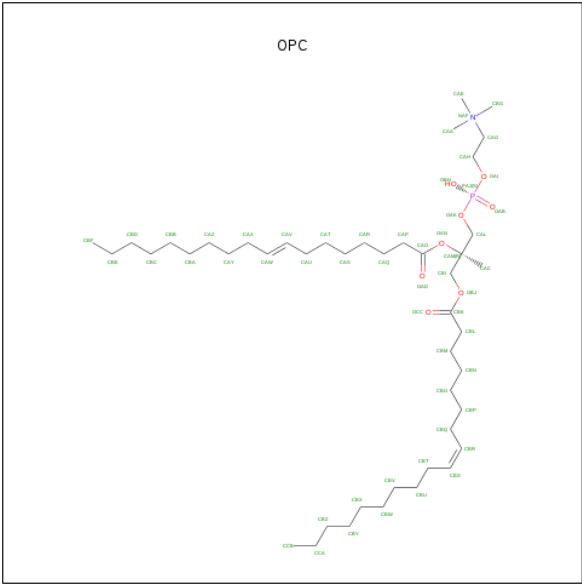
Mol	Chain	Residues	Atoms		ZeroOcc	AltConf
15	B	1	Total	C	0	0
			18	18		

- Molecule 16 is CHLOROPHYLL A (three-letter code: CLA) (formula: C₅₅H₇₂MgN₄O₅).



Mol	Chain	Residues	Atoms					ZeroOcc	AltConf
			Total	C	Mg	N	O		
16	B	1	65	55	1	4	5	0	0

- Molecule 17 is (7R,17E)-4-HYDROXY-N,N,N,7-TETRAMETHYL-7-[(8E)-OCTADEC-8-ENOYLOXY]-10-OXO-3,5,9-TRIOXA-4-PHOSPHAHEPTACOS-17-EN-1-AMINIUM M4-OXIDE (three-letter code: OPC) (formula: C₄₅H₈₇NO₈P).



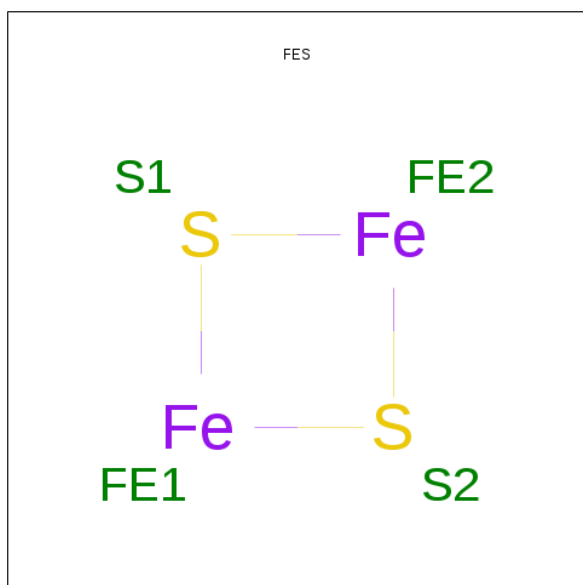
Mol	Chain	Residues	Atoms					ZeroOcc	AltConf
			Total	C	N	O	P		
17	B	1	54	44	1	8	1	0	0

Continued on next page...

Continued from previous page...

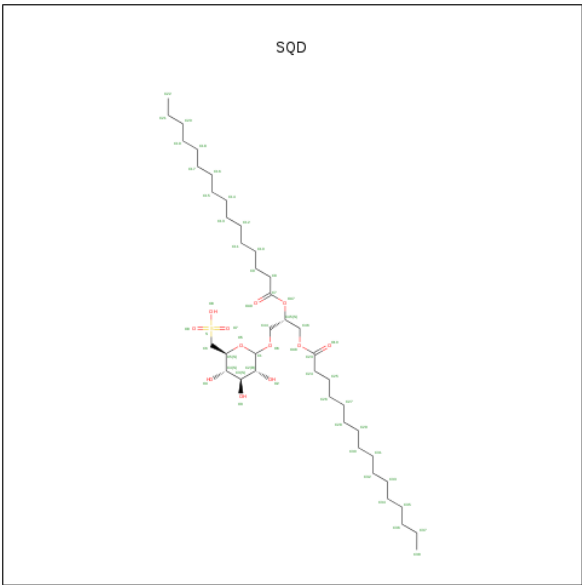
Mol	Chain	Residues	Atoms					ZeroOcc	AltConf
17	D	1	Total	C	N	O	P	1	0
			54	44	1	8	1		
17	E	1	Total	C	N	O	P	0	0
			54	44	1	8	1		

- Molecule 18 is FE2/S2 (INORGANIC) CLUSTER (three-letter code: FES) (formula: Fe_2S_2).



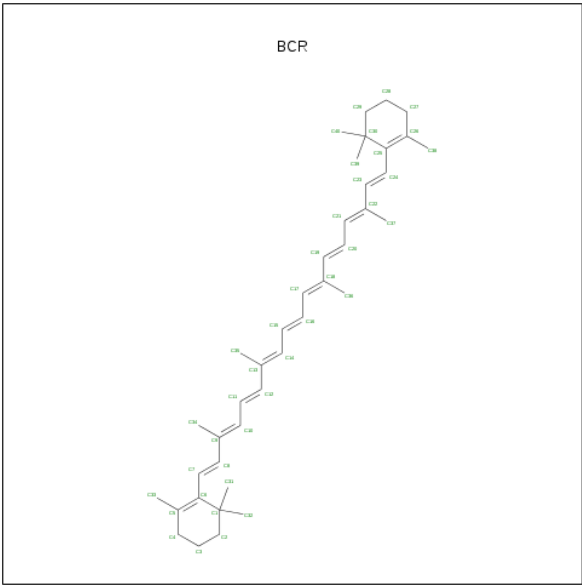
Mol	Chain	Residues	Atoms			ZeroOcc	AltConf
18	D	1	Total	Fe	S	0	0
			4	2	2		

- Molecule 19 is 1,2-DI-O-ACYL-3-O-[6-DEOXY-6-SULFO-ALPHA-D-GLUCOPYRANOSYL]-SN-GLYCEROL (three-letter code: SQD) (formula: $\text{C}_{41}\text{H}_{78}\text{O}_{12}\text{S}$).



Mol	Chain	Residues	Atoms				ZeroOcc	AltConf
19	D	1	Total	C	O	S	30	0
			54	41	12	1		

- Molecule 20 is BETA-CAROTENE (three-letter code: BCR) (formula: C₄₀H₅₆).



Mol	Chain	Residues	Atoms		ZeroOcc	AltConf
20	G	1	Total	C	14	0
			40	40		

- Molecule 21 is water.

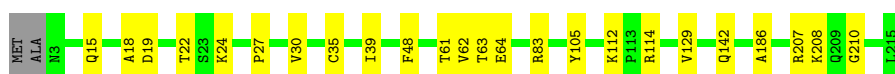
Mol	Chain	Residues	Atoms		ZeroOcc	AltConf
21	A	8	Total 8	O 8	0	0
21	B	5	Total 5	O 5	0	0
21	C	2	Total 2	O 2	0	0
21	G	1	Total 1	O 1	0	0

3 Residue-property plots

These plots are drawn for all protein, RNA and DNA chains in the entry. The first graphic for a chain summarises the proportions of errors displayed in the second graphic. The second graphic shows the sequence view annotated by issues in geometry and electron density. Residues are color-coded according to the number of geometric quality criteria for which they contain at least one outlier: green = 0, yellow = 1, orange = 2 and red = 3 or more. A red dot above a residue indicates a poor fit to the electron density ($RSRZ > 2$). Stretches of 2 or more consecutive residues without any outlier are shown as a green connector. Residues present in the sample, but not in the model, are shown in grey.

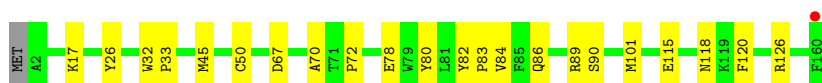
- Molecule 1: Cytochrome b6

Chain A: 



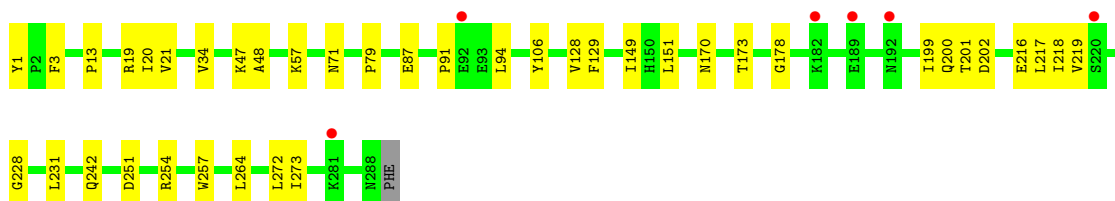
- Molecule 2: Cytochrome b6-f complex subunit 4

Chain B: 



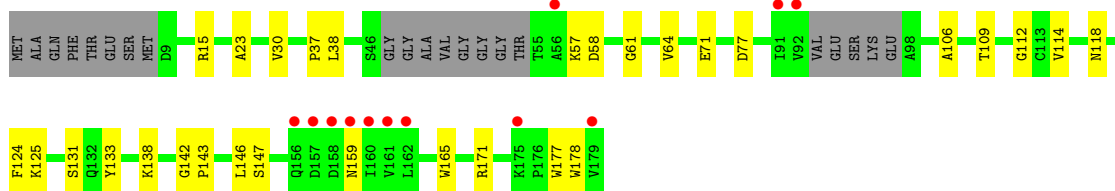
- Molecule 3: Apocytochrome f

Chain C: 



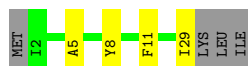
- Molecule 4: Cytochrome b6-f complex iron-sulfur subunit

Chain D: 



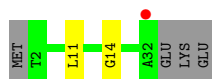
- Molecule 5: Cytochrome b6-f complex subunit 6

Chain E: 



- Molecule 6: Cytochrome b6-f complex subunit 7

Chain F: 



- Molecule 7: Cytochrome b6-f complex subunit 5

Chain G: 



- Molecule 8: Cytochrome b6-f complex subunit 8

Chain H: 



4 Data and refinement statistics

Property	Value	Source
Space group	P 61 2 2	Depositor
Cell constants a, b, c, α , β , γ	159.09Å 159.09Å 361.32Å 90.00° 90.00° 120.00°	Depositor
Resolution (Å)	48.34 – 3.00 48.34 – 3.00	Depositor EDS
% Data completeness (in resolution range)	91.2 (48.34-3.00) 83.4 (48.34-3.00)	Depositor EDS
R_{merge}	(Not available)	Depositor
R_{sym}	(Not available)	Depositor
$\langle I/\sigma(I) \rangle$ ¹	1.63 (at 3.01Å)	Xtriage
Refinement program	PHENIX (PHENIX.REFINE: 1.8.4_1496)	Depositor
R, R_{free}	0.216 , 0.247 0.214 , 0.241	Depositor DCC
R_{free} test set	2314 reflections (5.05%)	DCC
Wilson B-factor (Å ²)	85.8	Xtriage
Anisotropy	0.219	Xtriage
Bulk solvent k_{sol} (e/Å ³), B_{sol} (Å ²)	0.30 , 73.8	EDS
Estimated twinning fraction	No twinning to report.	Xtriage
L-test for twinning	$\langle L \rangle = 0.49$, $\langle L^2 \rangle = 0.32$	Xtriage
Outliers	2 of 50300 reflections (0.004%)	Xtriage
F_o, F_c correlation	0.92	EDS
Total number of atoms	8049	wwPDB-VP
Average B, all atoms (Å ²)	114.0	wwPDB-VP

Xtriage's analysis on translational NCS is as follows: *The largest off-origin peak in the Patterson function is 2.79% of the height of the origin peak. No significant pseudotranslation is detected.*

¹Intensities estimated from amplitudes.

5 Model quality

5.1 Standard geometry

Bond lengths and bond angles in the following residue types are not validated in this section: UMQ, MYS, CLA, CD, 7PH, BCR, FES, OPC, HEM, 8K6, SMA, SQD

The Z score for a bond length (or angle) is the number of standard deviations the observed value is removed from the expected value. A bond length (or angle) with $|Z| > 5$ is considered an outlier worth inspection. RMSZ is the root-mean-square of all Z scores of the bond lengths (or angles).

Mol	Chain	Bond lengths		Bond angles	
		RMSZ	# Z >5	RMSZ	# Z >5
1	A	0.22	0/1750	0.37	0/2388
2	B	0.21	0/1280	0.37	0/1755
3	C	0.21	0/2264	0.39	0/3082
4	D	0.20	0/1252	0.37	0/1705
5	E	0.22	0/220	0.35	0/297
6	F	0.21	0/238	0.32	0/321
7	G	0.21	0/289	0.37	0/391
8	H	0.20	0/228	0.32	0/313
All	All	0.21	0/7521	0.37	0/10252

There are no bond length outliers.

There are no bond angle outliers.

There are no chirality outliers.

There are no planarity outliers.

5.2 Close contacts

In the following table, the Non-H and H(model) columns list the number of non-hydrogen atoms and hydrogen atoms in the chain respectively. The H(added) column lists the number of hydrogens added by MolProbity. The Clashes column lists the number of clashes within the asymmetric unit, and the number in parentheses is this value normalized per 1000 atoms of the molecule in the chain. The Symm-Clashes column gives symmetry related clashes, in the same way as for the Clashes column.

Mol	Chain	Non-H	H(model)	H(added)	Clashes	Symm-Clashes
1	A	1698	0	1719	25	1
2	B	1241	0	1296	17	0
3	C	2216	0	2232	24	1
4	D	1221	0	1206	19	0

Continued on next page...

Continued from previous page...

Mol	Chain	Non-H	H(model)	H(added)	Clashes	Symm-Clashes
5	E	215	0	237	3	0
6	F	234	0	248	2	0
7	G	283	0	289	1	0
8	H	222	0	227	2	0
9	A	15	0	32	3	0
10	A	1	0	0	0	0
10	B	1	0	0	0	0
11	A	129	0	90	11	0
11	C	43	0	30	3	0
12	A	68	0	87	10	0
12	B	34	0	44	10	0
13	A	37	0	41	7	0
14	A	32	0	45	3	0
15	B	18	0	38	0	0
16	B	65	0	72	5	0
17	B	54	0	83	5	0
17	D	54	0	83	4	0
17	E	54	0	83	12	0
18	D	4	0	0	0	0
19	D	54	0	78	1	0
20	G	40	0	56	1	0
21	A	8	0	0	0	0
21	B	5	0	0	1	0
21	C	2	0	0	0	0
21	G	1	0	0	0	0
All	All	8049	0	8316	124	1

Clashscore is defined as the number of clashes calculated for the entry per 1000 atoms (including hydrogens) of the entry. The overall clashscore for this entry is 8.

All (124) close contacts within the same asymmetric unit are listed below.

Atom-1	Atom-2	Distance(Å)	Clash(Å)
12:B:203:UMQ:O5'	12:B:203:UMQ:C5'	1.63	1.46
1:A:35:CYS:SG	11:A:305:HEM:CAB	2.04	1.44
12:B:203:UMQ:O5'	12:B:203:UMQ:C1'	1.69	1.41
12:A:307:UMQ:O5'	12:A:307:UMQ:C1'	1.69	1.40
1:A:35:CYS:SG	11:A:305:HEM:CBB	2.18	1.31
12:B:203:UMQ:C5'	12:B:203:UMQ:C1'	2.48	0.91
12:A:307:UMQ:C5'	12:A:307:UMQ:C1'	2.48	0.91
1:A:35:CYS:SG	11:A:305:HEM:C3B	2.64	0.91
9:A:301:MYS:H52	9:A:301:MYS:H101	1.52	0.90
1:A:83:ARG:NH1	11:A:303:HEM:O2D	2.04	0.89

Continued on next page...

Continued from previous page...

Atom-1	Atom-2	Distance(Å)	Clash(Å)
17:E:101:OPC:HBI1	17:E:101:OPC:HAQ1	1.57	0.85
1:A:114:ARG:NH1	1:A:210:GLY:O	2.10	0.85
1:A:186:ALA:HB2	9:A:301:MYS:H81	1.61	0.83
1:A:208:LYS:NZ	12:A:306:UMQ:H61	1.98	0.79
2:B:78:GLU:OE2	2:B:80:TYR:OH	2.03	0.76
4:D:165:TRP:HB3	4:D:178:TRP:HE1	1.50	0.74
3:C:251:ASP:HB3	3:C:254:ARG:HD3	1.67	0.74
1:A:24:LYS:HG3	13:A:308:SMA:H4	1.71	0.73
11:A:303:HEM:HHC	11:A:303:HEM:HBB2	1.70	0.73
11:C:301:HEM:HBB2	11:C:301:HEM:HHC	1.75	0.69
1:A:208:LYS:HZ2	12:A:306:UMQ:H61	1.59	0.68
17:E:101:OPC:HBF2	6:F:14:GLY:HA3	1.76	0.67
5:E:5:ALA:HA	17:E:101:OPC:HAW	1.78	0.66
1:A:22:THR:HG21	12:B:203:UMQ:H2'1	1.78	0.66
4:D:57:LYS:HB3	4:D:61:GLY:HA2	1.79	0.65
14:A:309:7PH:H2CA	4:D:37:PRO:HG2	1.79	0.64
11:A:304:HEM:HMC2	11:A:304:HEM:HBC2	1.80	0.64
3:C:178:GLY:HA3	3:C:199:ILE:HG23	1.80	0.63
3:C:91:PRO:HG2	3:C:94:LEU:HB2	1.80	0.63
9:A:301:MYS:C5	9:A:301:MYS:H101	2.28	0.62
13:A:308:SMA:H36	13:A:308:SMA:H14	1.82	0.61
12:A:306:UMQ:O5'	12:A:306:UMQ:C6'	2.48	0.61
17:E:101:OPC:HBW1	8:H:15:PHE:CD1	2.35	0.61
4:D:124:PHE:HB2	4:D:133:TYR:HB2	1.83	0.60
4:D:131:SER:HA	4:D:142:GLY:HA3	1.82	0.60
1:A:39:ILE:HD11	20:G:101:BCR:H312	1.83	0.59
1:A:142:GLN:NE2	2:B:70:ALA:O	2.36	0.58
3:C:19:ARG:O	3:C:242:GLN:NE2	2.35	0.58
4:D:38:LEU:HD21	17:D:203:OPC:HAL2	1.85	0.58
1:A:142:GLN:HG3	2:B:72:PRO:HG3	1.86	0.57
5:E:8:TYR:CE2	17:E:101:OPC:HAZ1	2.39	0.56
4:D:109:THR:HG21	4:D:146:LEU:HB2	1.87	0.56
3:C:57:LYS:HB3	3:C:57:LYS:NZ	2.20	0.56
1:A:207:ARG:NH1	13:A:308:SMA:O4	2.38	0.56
11:A:305:HEM:HHA	11:A:305:HEM:HBD1	1.88	0.56
3:C:48:ALA:HB3	3:C:129:PHE:HB2	1.88	0.56
1:A:105:TYR:O	2:B:126:ARG:NH2	2.34	0.55
1:A:129:VAL:HG21	16:B:204:CLA:H43	1.88	0.55
3:C:79:PRO:HD3	3:C:149:ILE:HG12	1.87	0.55
11:A:305:HEM:HMC1	11:A:305:HEM:HBC2	1.89	0.55
3:C:272:LEU:HD23	4:D:23:ALA:HB1	1.89	0.54
17:E:101:OPC:HBI1	17:E:101:OPC:CAQ	2.35	0.54

Continued on next page...

Continued from previous page...

Atom-1	Atom-2	Distance(Å)	Clash(Å)
11:A:303:HEM:HMC1	11:A:303:HEM:HBC2	1.90	0.54
2:B:17:LYS:NZ	2:B:26:TYR:OH	2.40	0.53
4:D:118:ASN:HD22	4:D:125:LYS:HD3	1.74	0.53
11:C:301:HEM:HBC2	11:C:301:HEM:HMC2	1.89	0.53
11:A:305:HEM:HMB1	11:A:305:HEM:HBB2	1.90	0.53
3:C:34:VAL:HB	3:C:151:LEU:HD22	1.90	0.53
1:A:61:THR:HG22	1:A:63:THR:H	1.73	0.53
17:D:203:OPC:HBI2	17:D:203:OPC:HBO1	1.90	0.53
16:B:204:CLA:HAC1	17:B:205:OPC:HBW1	1.91	0.52
2:B:84:VAL:HG13	2:B:101:MET:HG2	1.92	0.51
1:A:15:GLN:NE2	1:A:19:ASP:OD1	2.44	0.51
12:B:203:UMQ:O5'	12:B:203:UMQ:C6'	2.48	0.51
13:A:308:SMA:C25	12:B:203:UMQ:HL1	2.41	0.51
4:D:138:LYS:HD2	4:D:171:ARG:HG3	1.93	0.50
2:B:86:GLN:HE22	2:B:89:ARG:HH21	1.58	0.50
4:D:77:ASP:N	4:D:77:ASP:OD1	2.44	0.50
11:A:304:HEM:HBB2	11:A:304:HEM:HMB1	1.94	0.50
16:B:204:CLA:OBD	21:B:305:HOH:O	2.19	0.50
3:C:200:GLN:HG3	3:C:201:THR:H	1.77	0.49
3:C:47:LYS:HG3	3:C:128:VAL:HG13	1.94	0.49
4:D:106:ALA:HB1	4:D:114:VAL:HG13	1.94	0.49
17:B:205:OPC:HAS1	17:B:205:OPC:HBL2	1.94	0.49
1:A:18:ALA:HB2	12:A:307:UMQ:HD2	1.95	0.48
14:A:309:7PH:H24A	3:C:254:ARG:HA	1.95	0.48
1:A:208:LYS:HZ3	12:A:306:UMQ:H61	1.76	0.48
12:A:306:UMQ:O5'	12:A:306:UMQ:C4'	2.62	0.48
4:D:146:LEU:HD13	4:D:177:TRP:CG	2.49	0.48
3:C:231:LEU:H	3:C:231:LEU:HD23	1.79	0.47
1:A:27:PRO:HG2	1:A:30:VAL:HG23	1.95	0.47
3:C:173:THR:HB	3:C:228:GLY:HA2	1.95	0.47
2:B:50:CYS:HB3	17:E:101:OPC:HBX1	1.95	0.47
13:A:308:SMA:H43	12:B:203:UMQ:CL	2.45	0.47
4:D:131:SER:HB3	4:D:143:PRO:HD2	1.97	0.47
1:A:61:THR:HB	1:A:64:GLU:HB2	1.97	0.46
2:B:118:ASN:HD21	2:B:120:PHE:HB2	1.80	0.46
3:C:201:THR:OG1	3:C:202:ASP:N	2.48	0.46
17:E:101:OPC:HBN1	6:F:11:LEU:HD12	1.96	0.46
3:C:216:GLU:HG3	3:C:217:LEU:H	1.81	0.46
4:D:58:ASP:HB3	4:D:64:VAL:HG22	1.98	0.46
16:B:204:CLA:HBB2	17:B:205:OPC:HBM2	1.98	0.46
14:A:309:7PH:H26	3:C:257:TRP:HB2	1.97	0.45
2:B:115:GLU:HG2	17:B:205:OPC:HBI2	1.99	0.45

Continued on next page...

Continued from previous page...

Atom-1	Atom-2	Distance(Å)	Clash(Å)
3:C:218:ILE:HD12	3:C:219:VAL:HG23	1.98	0.45
13:A:308:SMA:H43	12:B:203:UMQ:HL2	1.99	0.45
3:C:71:ASN:HB2	11:C:301:HEM:CGA	2.48	0.44
1:A:142:GLN:OE1	2:B:67:ASP:N	2.47	0.44
17:E:101:OPC:HBP2	17:E:101:OPC:HBS	1.68	0.44
17:E:101:OPC:HAZ2	17:E:101:OPC:HBC1	1.58	0.44
3:C:218:ILE:H	3:C:218:ILE:HG13	1.67	0.44
17:D:203:OPC:HAH2	17:D:203:OPC:HAA2	1.72	0.44
12:B:203:UMQ:HF1	12:B:203:UMQ:HI1	1.76	0.43
17:E:101:OPC:HAH1	17:E:101:OPC:HAE2	1.63	0.43
2:B:118:ASN:ND2	2:B:120:PHE:HB2	2.34	0.43
3:C:13:PRO:HB3	3:C:106:TYR:CE1	2.54	0.43
16:B:204:CLA:CBB	17:B:205:OPC:HBM2	2.50	0.42
17:E:101:OPC:HBP1	7:G:5:LEU:HD11	2.00	0.42
12:A:306:UMQ:H2'1	12:A:306:UMQ:HA2	1.67	0.42
12:A:306:UMQ:O5'	12:A:306:UMQ:C2'	2.67	0.42
3:C:170:ASN:OD1	3:C:170:ASN:N	2.51	0.42
13:A:308:SMA:H40	12:B:203:UMQ:HL1	2.02	0.42
2:B:33:PRO:HG3	19:D:202:SQD:H4	2.02	0.41
4:D:15:ARG:HH12	5:E:29:ILE:HG22	1.85	0.41
2:B:45:MET:HE1	4:D:30:VAL:HG21	2.01	0.41
2:B:86:GLN:OE1	2:B:90:SER:OG	2.39	0.41
3:C:1:TYR:HB3	3:C:3:PHE:CE1	2.56	0.40
4:D:64:VAL:N	4:D:159:ASN:OD1	2.54	0.40
1:A:48:PHE:HE2	17:D:203:OPC:HAQ2	1.87	0.40
1:A:62:VAL:HG23	1:A:63:THR:HG23	2.03	0.40
2:B:32:TRP:HA	2:B:33:PRO:HA	1.81	0.40
4:D:138:LYS:HA	4:D:147:SER:HB3	2.03	0.40
2:B:82:TYR:HB2	2:B:83:PRO:HD3	2.04	0.40
3:C:273:ILE:HD12	8:H:25:GLY:HA3	2.03	0.40

All (1) symmetry-related close contacts are listed below. The label for Atom-2 includes the symmetry operator and encoded unit-cell translations to be applied.

Atom-1	Atom-2	Distance(Å)	Clash(Å)
1:A:112:LYS:NZ	3:C:87:GLU:OE1[8_665]	2.19	0.01

5.3 Torsion angles

5.3.1 Protein backbone ⓘ

In the following table, the Percentiles column shows the percent Ramachandran outliers of the chain as a percentile score with respect to all X-ray entries followed by that with respect to entries of similar resolution.

The Analysed column shows the number of residues for which the backbone conformation was analysed, and the total number of residues.

Mol	Chain	Analysed	Favoured	Allowed	Outliers	Percentiles	
1	A	211/215 (98%)	201 (95%)	10 (5%)	0	100	100
2	B	157/160 (98%)	150 (96%)	7 (4%)	0	100	100
3	C	286/289 (99%)	256 (90%)	28 (10%)	2 (1%)	30	78
4	D	152/179 (85%)	127 (84%)	23 (15%)	2 (1%)	18	62
5	E	26/32 (81%)	26 (100%)	0	0	100	100
6	F	29/35 (83%)	27 (93%)	2 (7%)	0	100	100
7	G	35/37 (95%)	33 (94%)	2 (6%)	0	100	100
8	H	26/29 (90%)	26 (100%)	0	0	100	100
All	All	922/976 (94%)	846 (92%)	72 (8%)	4 (0%)	43	87

All (4) Ramachandran outliers are listed below:

Mol	Chain	Res	Type
4	D	71	GLU
4	D	112	GLY
3	C	20	ILE
3	C	21	VAL

5.3.2 Protein sidechains ⓘ

In the following table, the Percentiles column shows the percent sidechain outliers of the chain as a percentile score with respect to all X-ray entries followed by that with respect to entries of similar resolution. The Analysed column shows the number of residues for which the sidechain conformation was analysed, and the total number of residues.

Mol	Chain	Analysed	Rotameric	Outliers	Percentiles	
1	A	183/184 (100%)	183 (100%)	0	100	100
2	B	136/137 (99%)	136 (100%)	0	100	100

Continued on next page...

Continued from previous page...

Mol	Chain	Analysed	Rotameric	Outliers	Percentiles	
3	C	242/243 (100%)	241 (100%)	1 (0%)	95	99
4	D	132/146 (90%)	132 (100%)	0	100	100
5	E	21/25 (84%)	20 (95%)	1 (5%)	35	79
6	F	23/27 (85%)	23 (100%)	0	100	100
7	G	28/28 (100%)	27 (96%)	1 (4%)	47	86
8	H	23/24 (96%)	23 (100%)	0	100	100
All	All	788/814 (97%)	785 (100%)	3 (0%)	95	99

All (3) residues with a non-rotameric sidechain are listed below:

Mol	Chain	Res	Type
3	C	264	LEU
5	E	11	PHE
7	G	35	LEU

Some sidechains can be flipped to improve hydrogen bonding and reduce clashes. There are no such sidechains identified.

5.3.3 RNA ⓘ

There are no RNA chains in this entry.

5.4 Non-standard residues in protein, DNA, RNA chains ⓘ

There are no non-standard protein/DNA/RNA residues in this entry.

5.5 Carbohydrates ⓘ

There are no carbohydrates in this entry.

5.6 Ligand geometry ⓘ

Of 20 ligands modelled in this entry, 2 are monoatomic - leaving 18 for Mogul analysis.

In the following table, the Counts columns list the number of bonds (or angles) for which Mogul statistics could be retrieved, the number of bonds (or angles) that are observed in the model and the number of bonds (or angles) that are defined in the chemical component dictionary. The Link column lists molecule types, if any, to which the group is linked. The Z score for a bond length

(or angle) is the number of standard deviations the observed value is removed from the expected value. A bond length (or angle) with $|Z| > 2$ is considered an outlier worth inspection. RMSZ is the root-mean-square of all Z scores of the bond lengths (or angles).

Mol	Type	Chain	Res	Link	Bond lengths			Bond angles		
					Counts	RMSZ	$\# Z > 2$	Counts	RMSZ	$\# Z > 2$
9	MYS	A	301	-	14,14,14	0.12	0	13,13,13	0.78	0
11	HEM	A	303	1	42,50,50	3.61	13 (30%)	27,82,82	1.28	3 (11%)
11	HEM	A	304	1	42,50,50	3.53	13 (30%)	27,82,82	1.32	4 (14%)
11	HEM	A	305	13,21	42,50,50	3.55	13 (30%)	27,82,82	1.27	3 (11%)
12	UMQ	A	306	-	35,35,35	3.62	17 (48%)	46,46,46	2.19	8 (17%)
12	UMQ	A	307	-	35,35,35	3.63	17 (48%)	46,46,46	2.14	5 (10%)
13	SMA	A	308	11	38,38,38	3.15	12 (31%)	50,52,52	2.01	13 (26%)
14	7PH	A	309	-	31,31,37	1.50	3 (9%)	33,33,42	1.31	3 (9%)
15	8K6	B	201	-	17,17,17	0.11	0	16,16,16	0.84	0
12	UMQ	B	203	-	35,35,35	3.64	17 (48%)	46,46,46	2.11	7 (15%)
16	CLA	B	204	21	73,73,73	1.61	10 (13%)	96,113,113	1.24	12 (12%)
17	OPC	B	205	-	51,53,54	1.02	2 (3%)	55,61,64	0.99	3 (5%)
11	HEM	C	301	3	42,50,50	3.62	13 (30%)	27,82,82	1.28	4 (14%)
18	FES	D	201	4	0,4,4	0.00	-	0,4,4	0.00	-
19	SQD	D	202	-	54,54,54	0.93	3 (5%)	65,65,65	1.66	10 (15%)
17	OPC	D	203	-	51,53,54	1.01	2 (3%)	55,61,64	0.98	2 (3%)
17	OPC	E	101	-	51,53,54	1.01	2 (3%)	55,61,64	1.01	2 (3%)
20	BCR	G	101	-	41,41,41	1.07	2 (4%)	56,56,56	1.15	4 (7%)

In the following table, the Chirals column lists the number of chiral outliers, the number of chiral centers analysed, the number of these observed in the model and the number defined in the chemical component dictionary. Similar counts are reported in the Torsion and Rings columns. '-' means no outliers of that kind were identified.

Mol	Type	Chain	Res	Link	Chirals	Torsions	Rings
9	MYS	A	301	-	-	0/12/12/12	0/0/0/0
11	HEM	A	303	1	-	0/14/114/114	0/0/8/8
11	HEM	A	304	1	-	0/14/114/114	0/0/8/8
11	HEM	A	305	13,21	-	0/14/114/114	0/0/8/8
12	UMQ	A	306	-	-	0/20/60/60	0/2/2/2
12	UMQ	A	307	-	-	0/20/60/60	0/2/2/2
13	SMA	A	308	11	1/1/5/10	1/33/34/34	0/2/2/2
14	7PH	A	309	-	-	0/33/33/39	0/0/0/0
15	8K6	B	201	-	-	0/15/15/15	0/0/0/0
12	UMQ	B	203	-	-	0/20/60/60	0/2/2/2

Continued on next page...

Continued from previous page...

Mol	Type	Chain	Res	Link	Chirals	Torsions	Rings
16	CLA	B	204	21	-	0/37/135/135	0/0/9/9
17	OPC	B	205	-	-	0/55/57/60	0/0/0/0
11	HEM	C	301	3	-	0/14/114/114	0/0/8/8
18	FES	D	201	4	-	0/0/4/4	0/1/1/1
19	SQD	D	202	-	-	0/49/69/69	0/1/1/1
17	OPC	D	203	-	-	1/55/57/60	0/0/0/0
17	OPC	E	101	-	-	0/55/57/60	0/0/0/0
20	BCR	G	101	-	-	0/29/63/63	0/2/2/2

All (139) bond length outliers are listed below:

Mol	Chain	Res	Type	Atoms	Z	Observed(Å)	Ideal(Å)
11	A	305	HEM	C3C-C2C	-13.09	1.35	1.45
11	A	304	HEM	C3C-C2C	-13.06	1.35	1.45
11	C	301	HEM	C3C-C2C	-13.04	1.35	1.45
11	A	303	HEM	C3C-C2C	-12.96	1.35	1.45
11	C	301	HEM	C3B-C2B	-12.38	1.33	1.45
11	A	303	HEM	C3B-C2B	-12.08	1.33	1.45
12	B	203	UMQ	O5'-C1'	10.81	1.69	1.41
12	A	307	UMQ	O5'-C1'	10.80	1.69	1.41
11	A	304	HEM	C3B-C2B	-10.80	1.35	1.45
11	A	305	HEM	C3B-C2B	-10.79	1.35	1.45
12	A	306	UMQ	O5'-C1'	10.79	1.69	1.41
13	A	308	SMA	O1-C2	8.68	1.45	1.35
12	A	307	UMQ	O3'-C3'	8.27	1.63	1.43
12	B	203	UMQ	O3'-C3'	8.27	1.63	1.43
12	A	306	UMQ	O3'-C3'	8.18	1.62	1.43
13	A	308	SMA	C4-C4A	7.97	1.52	1.41
12	A	306	UMQ	O5'-C5'	7.66	1.63	1.44
12	B	203	UMQ	O5'-C5'	7.62	1.63	1.44
12	A	307	UMQ	O5'-C5'	7.60	1.63	1.44
13	A	308	SMA	C20-C19	7.32	1.37	1.33
16	B	204	CLA	C3B-C4B	7.18	1.49	1.41
13	A	308	SMA	O1-C8A	7.05	1.48	1.36
11	A	305	HEM	CMB-C2B	5.97	1.55	1.45
11	A	305	HEM	CMC-C2C	5.91	1.55	1.45
11	A	304	HEM	CMB-C2B	5.90	1.55	1.45
11	C	301	HEM	CMC-C2C	5.89	1.55	1.45
11	A	303	HEM	CMC-C2C	5.83	1.55	1.45
11	A	304	HEM	CMC-C2C	5.81	1.55	1.45
12	B	203	UMQ	O5-C5	5.79	1.58	1.44
11	C	301	HEM	CMD-C2D	5.78	1.54	1.45

Continued on next page...

Continued from previous page...

Mol	Chain	Res	Type	Atoms	Z	Observed(Å)	Ideal(Å)
12	A	307	UMQ	O5-C5	5.75	1.58	1.44
13	A	308	SMA	C3-C2	5.73	1.46	1.39
12	A	306	UMQ	O5-C5	5.72	1.58	1.44
11	A	305	HEM	CMD-C2D	5.69	1.54	1.45
11	A	304	HEM	CMD-C2D	5.68	1.54	1.45
11	A	303	HEM	CMB-C2B	5.68	1.54	1.45
11	C	301	HEM	CMB-C2B	5.61	1.54	1.45
11	A	303	HEM	CMD-C2D	5.54	1.54	1.45
12	A	306	UMQ	C6-C5	-5.52	1.32	1.52
12	A	307	UMQ	C6-C5	-5.52	1.32	1.52
12	B	203	UMQ	C6-C5	-5.49	1.32	1.52
14	A	309	7PH	C3B-C3A	4.82	1.57	1.55
11	A	305	HEM	C3C-CAC	4.72	1.55	1.40
11	C	301	HEM	C3C-CAC	4.69	1.55	1.40
11	A	303	HEM	C3C-CAC	4.69	1.55	1.40
11	A	305	HEM	C3B-CAB	4.68	1.55	1.40
16	B	204	CLA	C4B-NB	4.68	1.42	1.34
11	A	304	HEM	C3C-CAC	4.65	1.55	1.40
11	A	304	HEM	C3B-CAB	4.64	1.55	1.40
11	A	303	HEM	C3B-CAB	4.58	1.55	1.40
11	C	301	HEM	C3B-CAB	4.55	1.55	1.40
12	A	307	UMQ	C3'-C4'	-4.45	1.39	1.52
12	A	306	UMQ	C3'-C4'	-4.45	1.39	1.52
12	B	203	UMQ	C3'-C4'	-4.44	1.39	1.52
12	B	203	UMQ	O1'-C1'	-4.43	1.31	1.40
12	A	307	UMQ	O1'-C1'	-4.41	1.32	1.40
12	B	203	UMQ	O2-C2	4.35	1.53	1.43
12	A	307	UMQ	O2-C2	4.35	1.53	1.43
12	A	306	UMQ	O2-C2	4.35	1.53	1.43
13	A	308	SMA	C18-C19	4.33	1.55	1.45
12	A	306	UMQ	O1'-C1'	-4.29	1.32	1.40
12	B	203	UMQ	C3-C2	-4.16	1.41	1.52
12	A	306	UMQ	C3-C2	-4.14	1.41	1.52
12	A	307	UMQ	C3-C2	-4.13	1.41	1.52
14	A	309	7PH	O31-C31	4.09	1.45	1.33
11	C	301	HEM	C3D-C2D	4.05	1.54	1.43
11	A	305	HEM	C3D-C2D	4.01	1.54	1.43
11	A	304	HEM	C3D-C2D	4.00	1.53	1.43
11	A	303	HEM	FE-NB	4.00	2.09	1.95
11	A	303	HEM	C3D-C2D	3.89	1.53	1.43
16	B	204	CLA	CHB-C4A	3.86	1.38	1.33
16	B	204	CLA	C1A-NA	3.83	1.40	1.32

Continued on next page...

Continued from previous page...

Mol	Chain	Res	Type	Atoms	Z	Observed(Å)	Ideal(Å)
13	A	308	SMA	C17-C16	3.81	1.55	1.44
14	A	309	7PH	O21-C21	3.80	1.45	1.34
11	A	304	HEM	FE-NB	3.73	2.08	1.95
17	B	205	OPC	OBJ-CBK	3.65	1.44	1.33
12	A	306	UMQ	C4-C5	3.62	1.60	1.53
12	B	203	UMQ	C4-C5	3.61	1.60	1.53
17	E	101	OPC	OBJ-CBK	3.61	1.44	1.33
17	D	203	OPC	OBJ-CBK	3.59	1.44	1.33
11	A	305	HEM	FE-NB	3.57	2.08	1.95
12	A	307	UMQ	C3'-C2'	-3.56	1.43	1.52
11	A	305	HEM	FE-ND	3.55	2.09	1.95
16	B	204	CLA	C1B-C2B	3.55	1.49	1.43
12	A	307	UMQ	C4-C5	3.53	1.60	1.53
11	C	301	HEM	FE-NB	3.51	2.08	1.95
12	A	306	UMQ	C3'-C2'	-3.49	1.43	1.52
12	B	203	UMQ	C3'-C2'	-3.46	1.43	1.52
12	B	203	UMQ	O3-C3	3.26	1.50	1.43
12	A	307	UMQ	O3-C3	3.25	1.50	1.43
12	A	306	UMQ	O3-C3	3.24	1.50	1.43
20	G	101	BCR	C1-C6	-3.23	1.49	1.53
11	A	303	HEM	FE-ND	3.18	2.08	1.95
13	A	308	SMA	O4-C4	3.07	1.26	1.22
11	C	301	HEM	FE-ND	3.06	2.07	1.95
19	D	202	SQD	O48-C23	3.04	1.42	1.33
12	B	203	UMQ	O1-C4'	3.02	1.51	1.43
12	A	306	UMQ	O1-C4'	3.00	1.51	1.43
20	G	101	BCR	C30-C25	-2.98	1.49	1.53
13	A	308	SMA	O7-C7	2.97	1.41	1.37
13	A	308	SMA	C9-C2	2.96	1.55	1.50
12	A	307	UMQ	O1-C4'	2.92	1.51	1.43
11	A	304	HEM	FE-ND	2.88	2.07	1.95
12	A	307	UMQ	C6'-C5'	-2.81	1.41	1.52
12	B	203	UMQ	C6'-C5'	-2.80	1.41	1.52
12	A	306	UMQ	C6'-C5'	-2.80	1.41	1.52
19	D	202	SQD	O47-C7	2.74	1.42	1.34
13	A	308	SMA	O5-C5	2.64	1.41	1.36
17	D	203	OPC	OAN-CAO	2.61	1.43	1.36
17	B	205	OPC	OAN-CAO	2.61	1.43	1.36
17	E	101	OPC	OAN-CAO	2.61	1.43	1.36
11	A	304	HEM	FE-NC	2.60	2.06	1.95
16	B	204	CLA	CMB-C2B	-2.52	1.46	1.51
12	B	203	UMQ	C1-C2	-2.51	1.45	1.52

Continued on next page...

Continued from previous page...

Mol	Chain	Res	Type	Atoms	Z	Observed(Å)	Ideal(Å)
11	A	305	HEM	C4D-ND	2.49	1.40	1.33
12	A	306	UMQ	C1-C2	-2.48	1.45	1.52
12	B	203	UMQ	O2'-C2'	2.48	1.49	1.43
12	A	307	UMQ	C1-C2	-2.48	1.45	1.52
12	A	307	UMQ	O2'-C2'	2.47	1.49	1.43
11	A	303	HEM	C4D-ND	2.45	1.39	1.33
12	A	306	UMQ	O2'-C2'	2.44	1.48	1.43
11	A	305	HEM	FE-NC	2.42	2.05	1.95
11	A	303	HEM	C1D-ND	2.39	1.39	1.33
11	A	305	HEM	C1D-ND	2.38	1.39	1.33
11	A	304	HEM	C4D-ND	2.37	1.39	1.33
16	B	204	CLA	C1D-C2D	2.36	1.48	1.42
11	A	304	HEM	C1D-ND	2.35	1.39	1.33
11	C	301	HEM	C4D-ND	2.35	1.39	1.33
16	B	204	CLA	C4D-C3D	2.35	1.48	1.42
16	B	204	CLA	CHC-C1C	2.34	1.43	1.35
11	C	301	HEM	C1D-ND	2.33	1.39	1.33
16	B	204	CLA	CMD-C2D	-2.23	1.46	1.51
13	A	308	SMA	C24-C13	-2.12	1.48	1.53
11	A	303	HEM	FE-NC	2.11	2.04	1.95
11	C	301	HEM	FE-NC	2.10	2.04	1.95
12	B	203	UMQ	O5-C1	2.08	1.47	1.41
19	D	202	SQD	O2-C2	-2.05	1.38	1.43
12	A	306	UMQ	O5-C1	2.03	1.47	1.41
12	A	307	UMQ	O5-C1	2.02	1.47	1.41

All (83) bond angle outliers are listed below:

Mol	Chain	Res	Type	Atoms	Z	Observed(°)	Ideal(°)
12	A	307	UMQ	C1'-O5'-C5'	-8.90	96.52	113.73
12	A	306	UMQ	C1'-O5'-C5'	-8.86	96.59	113.73
12	B	203	UMQ	C1'-O5'-C5'	-8.79	96.73	113.73
12	B	203	UMQ	C2'-C3'-C4'	7.32	125.47	109.59
12	A	306	UMQ	C2'-C3'-C4'	7.21	125.23	109.59
13	A	308	SMA	O7-C7-C8	-7.10	107.34	114.48
12	A	307	UMQ	C2'-C3'-C4'	6.91	124.57	109.59
13	A	308	SMA	O1-C2-C9	5.81	120.28	112.08
19	D	202	SQD	O7-S-C6	5.40	111.60	106.83
19	D	202	SQD	O9-S-C6	5.18	111.40	106.83
13	A	308	SMA	O7-C7-C6	4.64	132.20	124.23
12	A	307	UMQ	O5-C5-C4	-4.32	101.70	109.73
12	A	306	UMQ	C1-O1-C4'	-4.09	107.61	118.00

Continued on next page...

Continued from previous page...

Mol	Chain	Res	Type	Atoms	Z	Observed(°)	Ideal(°)
12	A	306	UMQ	O5-C5-C4	-4.03	102.25	109.73
14	A	309	7PH	O21-C21-C22	3.80	119.63	111.54
16	B	204	CLA	CMB-C2B-C1B	-3.74	122.71	128.46
19	D	202	SQD	O8-S-C6	3.72	110.31	105.89
19	D	202	SQD	O47-C7-C8	3.71	119.45	111.54
12	A	307	UMQ	C1-O1-C4'	-3.68	108.64	118.00
12	B	203	UMQ	O5-C5-C4	-3.67	102.90	109.73
19	D	202	SQD	O9-S-O7	-3.59	100.96	113.45
13	A	308	SMA	C5M-O5-C5	-3.58	113.03	117.79
17	B	205	OPC	OAN-CAO-CAP	3.20	120.37	110.50
12	B	203	UMQ	C1-O1-C4'	-3.13	110.06	118.00
19	D	202	SQD	C5-C6-S	-2.99	110.22	114.40
16	B	204	CLA	O2D-CGD-O1D	-2.97	117.82	123.79
17	E	101	OPC	OAN-CAO-CAP	2.94	119.58	110.50
17	D	203	OPC	OAN-CAO-CAP	2.92	119.51	110.50
11	A	304	HEM	CBD-CAD-C3D	-2.92	108.18	114.51
19	D	202	SQD	O6-C1-C2	2.88	111.85	108.15
13	A	308	SMA	O1-C8A-C8	2.86	119.47	115.97
16	B	204	CLA	C3D-C4D-CHA	2.76	112.58	108.16
11	A	304	HEM	C3A-C4A-NA	-2.75	107.66	109.50
16	B	204	CLA	C2D-C3D-CAD	2.74	146.12	134.94
20	G	101	BCR	C33-C5-C6	-2.74	121.40	124.50
16	B	204	CLA	CMB-C2B-C3B	2.71	130.27	125.16
19	D	202	SQD	C44-O6-C1	2.71	119.23	113.80
17	D	203	OPC	OBJ-CBK-CBL	2.67	120.06	111.90
17	E	101	OPC	OBJ-CBK-CBL	2.65	120.02	111.90
14	A	309	7PH	O11-C1-C2	-2.65	109.58	113.35
13	A	308	SMA	C9-C10-C11	-2.64	110.80	114.60
12	A	306	UMQ	C1-C2-C3	2.60	115.03	109.99
12	A	307	UMQ	C1-C2-C3	2.60	115.02	109.99
20	G	101	BCR	C27-C26-C25	2.59	126.28	122.86
13	A	308	SMA	C7M-O7-C7	-2.59	113.73	117.56
11	A	305	HEM	CAD-C3D-C4D	2.57	129.23	125.60
17	B	205	OPC	OBJ-CBK-CBL	2.49	119.53	111.90
12	A	306	UMQ	C3-C4-C5	2.48	114.62	110.17
11	C	301	HEM	CBD-CAD-C3D	-2.48	109.13	114.51
16	B	204	CLA	CHB-C4A-NA	2.47	127.83	124.38
16	B	204	CLA	CBD-CHA-C1A	2.42	131.93	128.77
12	B	203	UMQ	C3-C4-C5	2.38	114.44	110.17
14	A	309	7PH	O31-C31-C32	2.37	119.15	111.90
13	A	308	SMA	C14-C15-C16	-2.34	120.09	125.58
16	B	204	CLA	C1B-CHB-C4A	-2.34	125.47	130.12

Continued on next page...

Continued from previous page...

Mol	Chain	Res	Type	Atoms	Z	Observed(°)	Ideal(°)
19	D	202	SQD	O48-C23-C24	2.33	119.03	111.90
11	C	301	HEM	CBA-CAA-C2A	-2.30	108.79	112.63
16	B	204	CLA	CHD-C4C-NC	2.30	125.89	124.28
13	A	308	SMA	O12-C12-C11	2.29	111.34	107.80
17	B	205	OPC	OAI-PAJ-OAK	2.28	111.19	104.68
11	A	305	HEM	C3A-C4A-NA	-2.26	107.99	109.50
11	A	303	HEM	C3A-C4A-NA	-2.25	107.99	109.50
16	B	204	CLA	C4A-NA-C1A	2.23	109.53	106.38
11	C	301	HEM	C3A-C4A-NA	-2.21	108.02	109.50
13	A	308	SMA	C10-C9-C2	-2.20	107.85	113.35
13	A	308	SMA	C17-C18-C19	-2.18	120.12	126.37
16	B	204	CLA	C3A-C4A-CHB	-2.14	119.88	124.33
12	A	306	UMQ	O5'-C1'-C2'	2.10	114.61	110.30
16	B	204	CLA	CMD-C2D-C3D	2.10	129.11	125.16
11	A	303	HEM	CAD-C3D-C4D	2.08	128.53	125.60
12	B	203	UMQ	C1-C2-C3	2.08	114.02	109.99
12	A	306	UMQ	O3'-C3'-C2'	-2.08	105.72	110.36
11	A	303	HEM	CAD-CBD-CGD	-2.07	109.62	113.53
11	A	304	HEM	C4A-C3A-C2A	2.06	108.43	107.00
19	D	202	SQD	O5-C5-C4	2.06	113.55	109.73
12	B	203	UMQ	O3'-C3'-C2'	-2.05	105.78	110.36
11	A	304	HEM	CMC-C2C-C3C	2.04	129.09	124.26
11	A	305	HEM	CMC-C2C-C3C	2.03	129.06	124.26
20	G	101	BCR	C7-C8-C9	-2.02	123.19	126.22
20	G	101	BCR	C24-C23-C22	-2.02	123.20	126.22
13	A	308	SMA	C4-C4A-C5	-2.02	121.85	125.08
13	A	308	SMA	C16-C17-C18	-2.02	120.24	124.70
11	C	301	HEM	CMA-C3A-C4A	-2.00	125.39	128.46

All (1) chirality outliers are listed below:

Mol	Chain	Res	Type	Atom
13	A	308	SMA	C12

All (2) torsion outliers are listed below:

Mol	Chain	Res	Type	Atoms
13	A	308	SMA	C17-C16-C15-C14
17	D	203	OPC	CAO-OAN-CAM-CAL

There are no ring outliers.

5.7 Other polymers ⓘ

There are no such residues in this entry.

5.8 Polymer linkage issues

There are no chain breaks in this entry.

6 Fit of model and data ⓘ

6.1 Protein, DNA and RNA chains ⓘ

In the following table, the column labelled ‘#RSRZ> 2’ contains the number (and percentage) of RSRZ outliers, followed by percent RSRZ outliers for the chain as percentile scores relative to all X-ray entries and entries of similar resolution. The OWAB column contains the minimum, median, 95th percentile and maximum values of the occupancy-weighted average B-factor per residue. The column labelled ‘Q< 0.9’ lists the number of (and percentage) of residues with an average occupancy less than 0.9.

Mol	Chain	Analysed	<RSRZ>	#RSRZ>2	OWAB(Å ²)	Q<0.9
1	A	213/215 (99%)	-0.25	0 100 100	49, 74, 114, 157	5 (2%)
2	B	159/160 (99%)	-0.23	1 (0%) 86 32	60, 96, 139, 208	2 (1%)
3	C	288/289 (99%)	0.06	6 (2%) 60 12	67, 110, 237, 280	0
4	D	158/179 (88%)	0.43	12 (7%) 14 3	65, 170, 227, 287	0
5	E	28/32 (87%)	-0.42	0 100 100	92, 108, 131, 153	0
6	F	31/35 (88%)	0.08	1 (3%) 45 9	83, 100, 159, 177	0
7	G	37/37 (100%)	-0.11	0 100 100	74, 93, 202, 239	4 (10%)
8	H	28/29 (96%)	-0.23	0 100 100	77, 90, 128, 148	0
All	All	942/976 (96%)	-0.03	20 (2%) 60 12	49, 100, 212, 287	11 (1%)

All (20) RSRZ outliers are listed below:

Mol	Chain	Res	Type	RSRZ
6	F	32	ALA	4.9
4	D	91	ILE	3.9
4	D	160	ILE	3.6
4	D	92	VAL	3.3
4	D	56	ALA	2.8
2	B	160	PHE	2.7
4	D	179	VAL	2.7
4	D	162	LEU	2.7
3	C	189	GLU	2.6
4	D	175	LYS	2.5
4	D	159	ASN	2.4
4	D	156	GLN	2.4
3	C	281	LYS	2.4
3	C	192	ASN	2.3
4	D	158	ASP	2.2
3	C	182	LYS	2.1

Continued on next page...

Continued from previous page...

Mol	Chain	Res	Type	RSRZ
3	C	220	SER	2.1
4	D	157	ASP	2.1
3	C	92	GLU	2.1
4	D	161	VAL	2.1

6.2 Non-standard residues in protein, DNA, RNA chains ⓘ

There are no non-standard protein/DNA/RNA residues in this entry.

6.3 Carbohydrates ⓘ

There are no carbohydrates in this entry.

6.4 Ligands ⓘ

In the following table, the Atoms column lists the number of modelled atoms in the group and the number defined in the chemical component dictionary. LLDF column lists the quality of electron density of the group with respect to its neighbouring residues in protein, DNA or RNA chains. The B-factors column lists the minimum, median, 95th percentile and maximum values of B factors of atoms in the group. The column labelled 'Q< 0.9' lists the number of atoms with occupancy less than 0.9.

Mol	Type	Chain	Res	Atoms	RSR	LLDF	B-factors(Å ²)	Q<0.9
12	UMQ	A	306	34/34	0.47	6.66	72,128,148,161	7
14	7PH	A	309	32/38	0.43	6.47	53,85,112,116	4
15	8K6	B	201	18/18	0.37	5.12	74,93,107,115	0
12	UMQ	A	307	34/34	0.34	4.90	100,139,156,232	3
17	OPC	E	101	54/55	0.40	4.32	67,112,195,227	0
17	OPC	B	205	54/55	0.33	3.97	80,118,150,151	0
13	SMA	A	308	37/37	0.33	3.57	77,110,157,166	12
17	OPC	D	203	54/55	0.37	3.39	67,125,194,215	1
12	UMQ	B	203	34/34	0.34	3.17	107,167,218,223	0
9	MYS	A	301	15/15	0.29	3.12	50,68,85,86	0
20	BCR	G	101	40/40	0.36	2.90	57,80,98,107	14
16	CLA	B	204	65/65	0.26	1.70	69,97,126,131	0
10	CD	B	202	1/1	0.20	0.71	231,231,231,231	0
11	HEM	A	303	43/43	0.23	0.33	47,67,82,100	0
11	HEM	A	305	43/43	0.23	0.22	71,96,110,126	0
11	HEM	C	301	43/43	0.22	0.15	60,87,128,141	0
11	HEM	A	304	43/43	0.23	0.06	46,68,82,91	0

Continued on next page...

Continued from previous page...

Mol	Type	Chain	Res	Atoms	RSR	LLDF	B-factors(\AA^2)	Q<0.9
10	CD	A	302	1/1	0.19	-0.12	100,100,100,100	0
19	SQD	D	202	54/54	0.18	-0.63	104,125,149,154	30
18	FES	D	201	4/4	0.13	-0.78	151,161,163,260	0

6.5 Other polymers

There are no such residues in this entry.