



# Full wwPDB X-ray Structure Validation Report

Feb 28, 2014 – 01:56 PM GMT

PDB ID : 3PW2  
Title : Ternary complex of Aflatoxin B1 Adduct modified DNA (AFB1-FAPY) with  
DNA Polymerase IV and incoming dTTP  
Authors : Banerjee, S.  
Deposited on : 2010-12-07  
Resolution : 2.74 Å(reported)

This is a full wwPDB validation report for a publicly released PDB entry.  
We welcome your comments at [validation@mail.wwpdb.org](mailto:validation@mail.wwpdb.org)  
A user guide is available at <http://wwpdb.org/ValidationPDFNotes.html>

---

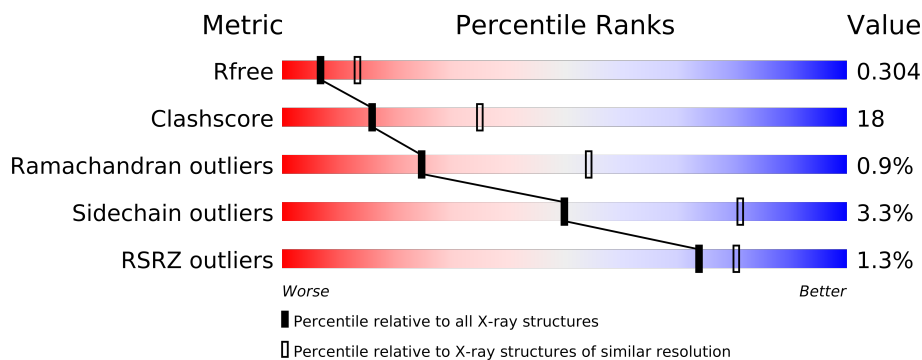
The following versions of software and data (see [references](#)) were used in the production of this report:

MolProbity : 4.02b-467  
Mogul : 1.15 2013  
Xtriage (Phenix) : dev-1323  
EDS : stable22639  
Percentile statistics : 21963  
Refmac : 5.8.0049  
CCP4 : 6.3.0 (Settle)  
Ideal geometry (proteins) : Engh & Huber (2001)  
Ideal geometry (DNA, RNA) : Parkinson et. al. (1996)  
Validation Pipeline (wwPDB-VP) : stable22683

# 1 Overall quality at a glance

The reported resolution of this entry is 2.74 Å.

Percentile scores (ranging between 0-100) for global validation metrics of the entry are shown in the following graphic. The table shows the number of entries on which the scores are based.



Metric	Whole archive (#Entries)	Similar resolution (#Entries, resolution range(Å))
$R_{free}$	66092	2164 (2.78-2.70)
Clashscore	79885	2639 (2.78-2.70)
Ramachandran outliers	78287	2594 (2.78-2.70)
Sidechain outliers	78261	2595 (2.78-2.70)
RSRZ outliers	66119	2166 (2.78-2.70)

The table below summarises the geometric issues observed across the polymeric chains and their fit to the electron density. The red, orange, yellow and green segments on the lower bar indicate the fraction of residues that contain outliers for  $\geq 3$ , 2, 1 and 0 types of geometric quality criteria. The upper red bar (where present) indicates the fraction of residues that have poor fit to the electron density.

Mol	Chain	Length	Quality of chain
1	A	347	
2	B	15	
3	C	13	

## 2 Entry composition

There are 6 unique types of molecules in this entry. The entry contains 3486 atoms, of which 0 are hydrogen and 0 are deuterium.

In the tables below, the ZeroOcc column contains the number of atoms modelled with zero occupancy, the AltConf column contains the number of residues with at least one atom in alternate conformation and the Trace column contains the number of residues modelled with at most 2 atoms.

- Molecule 1 is a protein called DNA polymerase IV.

Mol	Chain	Residues	Atoms					ZeroOcc	AltConf	Trace
1	A	342	Total	C	N	O	S	0	0	0
			2754	1766	475	506	7			

There are 6 discrepancies between the modelled and reference sequences:

Chain	Residue	Modelled	Actual	Comment	Reference
A	-4	HIS	-	EXPRESSION TAG	UNP Q97W02
A	-3	HIS	-	EXPRESSION TAG	UNP Q97W02
A	-2	HIS	-	EXPRESSION TAG	UNP Q97W02
A	-1	HIS	-	EXPRESSION TAG	UNP Q97W02
A	0	HIS	-	EXPRESSION TAG	UNP Q97W02
A	1	HIS	-	EXPRESSION TAG	UNP Q97W02

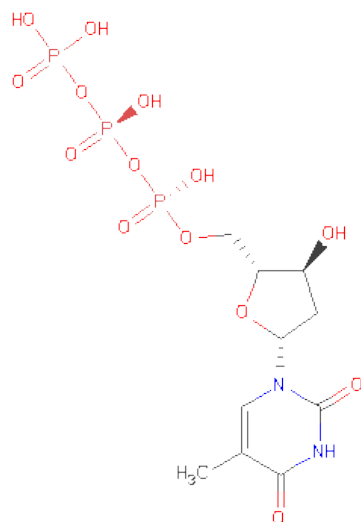
- Molecule 2 is a DNA chain called DNA (5'-D(\*TP\*TP\*(PVX)P\*AP\*AP\*TP\*CP\*CP\*TP\*TP\*CP\*CP\*CP\*CP\*C)-3').

Mol	Chain	Residues	Atoms					ZeroOcc	AltConf	Trace
2	B	15	Total	C	N	O	P	0	0	0
			319	160	46	99	14			

- Molecule 3 is a DNA chain called DNA (5'-D(\*GP\*GP\*GP\*GP\*GP\*AP\*AP\*GP\*GP\*AP\*TP\*TP\*C)-3').

Mol	Chain	Residues	Atoms					ZeroOcc	AltConf	Trace
3	C	13	Total	C	N	O	P	0	0	0
			273	129	57	75	12			

- Molecule 4 is THYMIDINE-5'-TRIPHOSPHATE (three-letter code: TTP) (formula: C<sub>10</sub>H<sub>17</sub>N<sub>2</sub>O<sub>14</sub>P<sub>3</sub>).



Mol	Chain	Residues	Atoms					ZeroOcc	AltConf
4	A	1	Total	C	N	O	P	0	0
			29	10	2	14	3		

- Molecule 5 is CALCIUM ION (three-letter code: CA) (formula: Ca).

Mol	Chain	Residues	Atoms		ZeroOcc	AltConf
5	A	3	Total	Ca	0	0
			3	3		

- Molecule 6 is water.

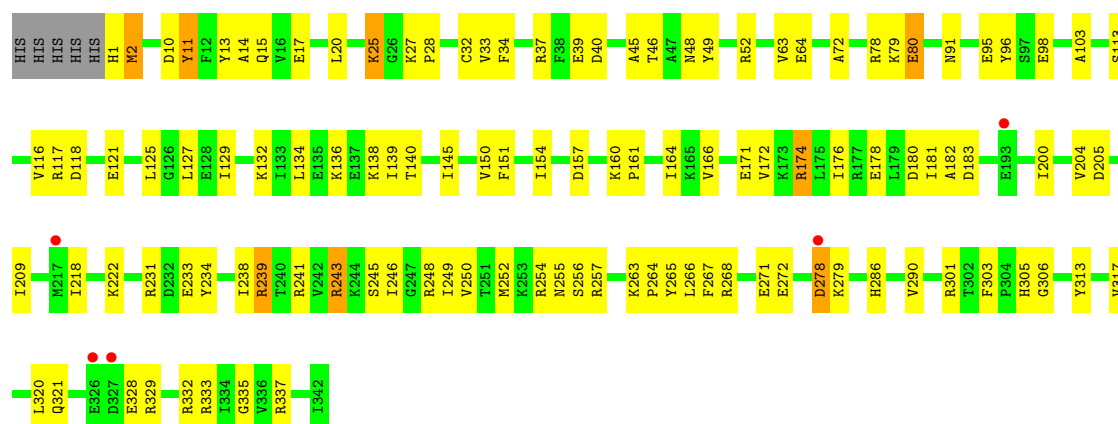
Mol	Chain	Residues	Atoms		ZeroOcc	AltConf
6	A	77	Total	O	0	0
			77	77		
6	B	21	Total	O	0	0
			21	21		
6	C	10	Total	O	0	0
			10	10		

### 3 Residue-property plots

These plots are drawn for all protein, RNA and DNA chains in the entry. The first graphic for a chain summarises the proportions of errors displayed in the second graphic. The second graphic shows the sequence view annotated by issues in geometry and electron density. Residues are color-coded according to the number of geometric quality criteria for which they contain at least one outlier: green = 0, yellow = 1, orange = 2 and red = 3 or more. A red dot above a residue indicates a poor fit to the electron density ( $RSRZ > 2$ ). Stretches of 2 or more consecutive residues without any outlier are shown as a green connector. Residues present in the sample, but not in the model, are shown in grey.

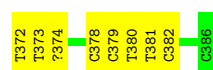
#### • Molecule 1: DNA polymerase IV

Chain A: 



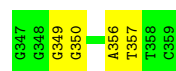
#### • Molecule 2: DNA (5'-D(\*TP\*TP\*(PVX)P\*AP\*AP\*TP\*CP\*CP\*TP\*TP\*CP\*CP\*CP\*CP\*C)-3')

Chain B: 



#### • Molecule 3: DNA (5'-D(\*GP\*GP\*GP\*GP\*GP\*AP\*AP\*GP\*GP\*AP\*TP\*TP\*C)-3')

Chain C: 



## 4 Data and refinement statistics

Property	Value	Source
Space group	P 21 21 2	Depositor
Cell constants a, b, c, $\alpha$ , $\beta$ , $\gamma$	94.25Å 104.41Å 52.36Å 90.00° 90.00° 90.00°	Depositor
Resolution (Å)	29.09 – 2.74 45.77 – 2.74	Depositor EDS
% Data completeness (in resolution range)	93.3 (29.09-2.74) 93.3 (45.77-2.74)	Depositor EDS
$R_{merge}$	(Not available)	Depositor
$R_{sym}$	(Not available)	Depositor
$\langle I/\sigma(I) \rangle$ <sup>1</sup>	0.88 (at 2.73Å)	Xtriage
Refinement program	CNS 1.1	Depositor
R, $R_{free}$	0.216 , 0.294 0.229 , 0.304	Depositor DCC
$R_{free}$ test set	1337 reflections (10.14%)	DCC
Wilson B-factor (Å <sup>2</sup> )	37.4	Xtriage
Anisotropy	0.423	Xtriage
Bulk solvent $k_{sol}$ (e/Å <sup>3</sup> ), $B_{sol}$ (Å <sup>2</sup> )	0.32 , 13.3	EDS
Estimated twinning fraction	No twinning to report.	Xtriage
L-test for twinning	$\langle  L  \rangle = 0.48$ , $\langle L^2 \rangle = 0.32$	Xtriage
Outliers	1 of 13582 reflections (0.007%)	Xtriage
$F_o, F_c$ correlation	0.91	EDS
Total number of atoms	3486	wwPDB-VP
Average B, all atoms (Å <sup>2</sup> )	35.0	wwPDB-VP

Xtriage's analysis on translational NCS is as follows: *The largest off-origin peak in the Patterson function is 4.87% of the height of the origin peak. No significant pseudotranslation is detected.*

<sup>1</sup>Intensities estimated from amplitudes.

## 5 Model quality

### 5.1 Standard geometry

Bond lengths and bond angles in the following residue types are not validated in this section: PVX, CA, TTP

The Z score for a bond length (or angle) is the number of standard deviations the observed value is removed from the expected value. A bond length (or angle) with  $|Z| > 5$  is considered an outlier worth inspection. RMSZ is the root-mean-square of all Z scores of the bond lengths (or angles).

Mol	Chain	Bond lengths		Bond angles	
		RMSZ	$\# Z  > 5$	RMSZ	$\# Z  > 5$
1	A	0.36	0/2794	0.59	0/3751
2	B	0.43	0/300	0.76	0/456
3	C	0.42	0/308	0.78	0/476
All	All	0.38	0/3402	0.63	0/4683

There are no bond length outliers.

There are no bond angle outliers.

There are no chirality outliers.

There are no planarity outliers.

### 5.2 Close contacts

In the following table, the Non-H and H(model) columns list the number of non-hydrogen atoms and hydrogen atoms in the chain respectively. The H(added) column lists the number of hydrogens added by MolProbity. The Clashes column lists the number of clashes within the asymmetric unit, and the number in parentheses is this value normalized per 1000 atoms of the molecule in the chain. The Symm-Clashes column gives symmetry related clashes, in the same way as for the Clashes column.

Mol	Chain	Non-H	H(model)	H(added)	Clashes	Symm-Clashes
1	A	2754	0	2896	102	0
2	B	319	0	183	16	0
3	C	273	0	147	4	0
4	A	29	0	12	4	0
5	A	3	0	0	0	0
6	A	77	0	0	6	2
6	B	21	0	0	3	0
6	C	10	0	0	0	0
All	All	3486	0	3238	122	2

Clashscore is defined as the number of clashes calculated for the entry per 1000 atoms (including hydrogens) of the entry. The overall clashscore for this entry is 18.

All (122) close contacts within the same asymmetric unit are listed below.

Atom-1	Atom-2	Distance(Å)	Clash(Å)
4:A:400:TTP:H6	4:A:400:TTP:H5'1	1.02	1.13
2:B:381:DT:H2''	2:B:382:DC:H5'	1.32	1.11
4:A:400:TTP:C6	4:A:400:TTP:H5'1	1.89	1.07
1:A:15:GLN:HE22	1:A:140:THR:N	1.66	0.93
1:A:174:ARG:HH11	1:A:174:ARG:HB2	1.34	0.91
1:A:15:GLN:HE22	1:A:140:THR:H	0.91	0.89
1:A:15:GLN:NE2	1:A:140:THR:H	1.72	0.88
1:A:174:ARG:NH1	1:A:174:ARG:HB2	1.90	0.87
1:A:248:ARG:HG2	1:A:248:ARG:HH11	1.42	0.84
3:C:349:DG:H2''	3:C:350:DG:H5'	1.59	0.83
1:A:116:VAL:HG13	1:A:121:GLU:HB2	1.63	0.79
1:A:200:ILE:HD11	1:A:209:ILE:HG13	1.70	0.73
2:B:381:DT:C2'	2:B:382:DC:H5'	2.15	0.73
1:A:80:GLU:CD	1:A:80:GLU:H	1.91	0.72
1:A:254:ARG:HH11	1:A:254:ARG:HB3	1.55	0.72
1:A:243:ARG:HD2	1:A:246:ILE:HD11	1.71	0.71
1:A:37:ARG:HH22	1:A:255:ASN:ND2	1.90	0.69
1:A:239:ARG:HD3	1:A:239:ARG:H	1.56	0.69
1:A:267:PHE:O	1:A:271:GLU:HG2	1.93	0.68
1:A:96:TYR:HD2	1:A:125:LEU:HD11	1.58	0.67
1:A:245:SER:O	1:A:246:ILE:HD12	1.95	0.66
2:B:380:DT:H2''	2:B:381:DT:H5''	1.79	0.65
1:A:37:ARG:NH2	1:A:255:ASN:ND2	2.44	0.64
3:C:356:DA:H2''	3:C:357:DT:H5'	1.80	0.64
1:A:174:ARG:HH11	1:A:174:ARG:CB	2.11	0.62
1:A:28:PRO:HG2	1:A:72:ALA:HA	1.82	0.62
1:A:305:HIS:HD2	1:A:306:GLY:O	1.82	0.62
1:A:328:GLU:HG2	6:A:2071:HOH:O	1.99	0.61
1:A:268:ARG:HG2	1:A:272:GLU:OE2	2.02	0.60
1:A:337:ARG:HH11	1:A:337:ARG:HB3	1.66	0.60
1:A:15:GLN:NE2	1:A:139:ILE:HA	2.17	0.58
2:B:372:DT:H2''	2:B:373:DT:O5'	2.02	0.58
1:A:231:ARG:HB2	1:A:233:GLU:HG3	1.85	0.58
1:A:252:MET:HG2	1:A:265:TYR:CD2	2.39	0.58
1:A:200:ILE:HG23	1:A:205:ASP:HB2	1.85	0.57
1:A:252:MET:HG2	1:A:265:TYR:CG	2.40	0.57
1:A:248:ARG:NH1	1:A:248:ARG:HG2	2.15	0.57
2:B:372:DT:H4'	6:B:2084:HOH:O	2.06	0.55
1:A:117:ARG:HH11	1:A:117:ARG:HB3	1.71	0.55

*Continued on next page...*



*Continued from previous page...*

Atom-1	Atom-2	Distance(Å)	Clash(Å)
1:A:250:VAL:HA	2:B:373:DT:OP1	2.06	0.55
1:A:263:LYS:HB2	1:A:264:PRO:HD3	1.89	0.55
1:A:145:ILE:HB	1:A:166:VAL:HG22	1.88	0.54
1:A:1:HIS:HE1	1:A:113:SER:O	1.90	0.54
2:B:380:DT:C2'	2:B:381:DT:H5''	2.37	0.54
1:A:248:ARG:CG	1:A:248:ARG:HH11	2.18	0.54
4:A:400:TTP:H4'	6:A:2027:HOH:O	2.06	0.54
1:A:278:ASP:O	1:A:279:LYS:HB2	2.07	0.54
1:A:172:VAL:O	1:A:176:ILE:HG13	2.08	0.54
2:B:373:DT:H2''	2:B:374:PVX:O5D	2.08	0.53
1:A:290:VAL:HB	1:A:333:ARG:HB2	1.89	0.53
1:A:20:LEU:HD23	1:A:78:ARG:NH2	2.23	0.53
1:A:176:ILE:HG22	1:A:176:ILE:O	2.10	0.52
1:A:157:ASP:HA	1:A:160:LYS:HD2	1.92	0.52
1:A:49:TYR:CZ	1:A:161:PRO:HB3	2.45	0.51
1:A:125:LEU:O	1:A:129:ILE:HG13	2.10	0.51
1:A:116:VAL:HG13	1:A:121:GLU:CB	2.38	0.51
1:A:98:GLU:CD	1:A:98:GLU:N	2.64	0.51
1:A:39:GLU:HA	1:A:39:GLU:OE1	2.12	0.50
1:A:150:VAL:HG23	1:A:234:TYR:CE2	2.46	0.50
1:A:257:ARG:HD3	1:A:329:ARG:O	2.11	0.50
1:A:286:HIS:ND1	6:A:2014:HOH:O	2.34	0.50
1:A:2:MET:O	1:A:2:MET:HG3	2.13	0.49
3:C:349:DG:C2'	3:C:350:DG:H5'	2.35	0.49
1:A:103:ALA:HA	1:A:241:ARG:NH1	2.28	0.49
1:A:271:GLU:OE2	1:A:313:TYR:OH	2.32	0.48
1:A:34:PHE:O	2:B:372:DT:H5'	2.13	0.48
1:A:248:ARG:CG	1:A:248:ARG:NH1	2.76	0.48
1:A:301:ARG:HD3	1:A:303:PHE:CZ	2.49	0.48
1:A:39:GLU:O	1:A:40:ASP:HB2	2.14	0.48
1:A:37:ARG:NH1	1:A:332:ARG:NH1	2.61	0.47
1:A:13:TYR:OH	1:A:79:LYS:HE3	2.14	0.47
1:A:10:ASP:O	1:A:11:TYR:C	2.52	0.47
1:A:127:LEU:HD21	1:A:164:ILE:HG21	1.96	0.47
2:B:380:DT:H2''	2:B:381:DT:C5'	2.43	0.46
1:A:248:ARG:NH1	1:A:250:VAL:HG12	2.30	0.46
1:A:245:SER:C	1:A:246:ILE:HD12	2.35	0.46
1:A:96:TYR:CD2	1:A:125:LEU:HD11	2.45	0.46
1:A:48:ASN:O	1:A:52:ARG:HG3	2.15	0.46
1:A:33:VAL:HG21	2:B:373:DT:C6	2.50	0.46
1:A:1:HIS:N	6:A:2096:HOH:O	2.38	0.46
1:A:63:VAL:HG23	6:A:2020:HOH:O	2.15	0.46

*Continued on next page...*

*Continued from previous page...*

Atom-1	Atom-2	Distance(Å)	Clash(Å)
2:B:374:PVX:C4	2:B:374:PVX:H9	2.46	0.45
2:B:372:DT:H72	6:B:2077:HOH:O	2.15	0.45
1:A:254:ARG:CB	1:A:254:ARG:HH11	2.27	0.45
1:A:27:LYS:HB3	1:A:28:PRO:HD2	1.98	0.45
1:A:45:ALA:O	1:A:46:THR:HB	2.16	0.45
1:A:17:GLU:OE1	1:A:17:GLU:HA	2.16	0.45
1:A:171:GLU:O	1:A:174:ARG:HG3	2.16	0.45
1:A:151:PHE:CD1	1:A:154:ILE:HD12	2.52	0.45
1:A:132:LYS:HD2	1:A:136:LYS:HE2	2.00	0.44
3:C:356:DA:H2''	3:C:357:DT:C5'	2.45	0.44
2:B:381:DT:H5'	6:B:2078:HOH:O	2.17	0.44
1:A:98:GLU:OE1	1:A:98:GLU:N	2.49	0.44
1:A:238:ILE:O	1:A:238:ILE:HG22	2.17	0.44
1:A:171:GLU:HA	1:A:174:ARG:CG	2.48	0.43
1:A:52:ARG:NH1	4:A:400:TTP:O3G	2.51	0.43
1:A:243:ARG:CD	1:A:246:ILE:HD11	2.45	0.43
2:B:378:DC:H2''	2:B:379:DC:O5'	2.19	0.43
1:A:278:ASP:O	1:A:279:LYS:CB	2.66	0.43
1:A:238:ILE:HD12	1:A:238:ILE:N	2.34	0.43
1:A:171:GLU:HA	1:A:174:ARG:HG2	2.01	0.43
1:A:337:ARG:NH1	6:A:2013:HOH:O	2.52	0.42
1:A:180:ASP:HB3	1:A:183:ASP:OD2	2.19	0.42
1:A:248:ARG:NE	1:A:272:GLU:OE1	2.50	0.42
1:A:249:ILE:HA	1:A:335:GLY:HA3	2.01	0.42
1:A:337:ARG:NH1	1:A:337:ARG:HB3	2.32	0.42
1:A:256:SER:OG	1:A:257:ARG:N	2.51	0.42
1:A:11:TYR:HD2	1:A:14:ALA:HB3	1.85	0.42
1:A:134:LEU:O	1:A:138:LYS:HA	2.19	0.42
1:A:117:ARG:NH1	1:A:117:ARG:HB3	2.34	0.42
1:A:116:VAL:CG1	1:A:117:ARG:N	2.82	0.42
1:A:266:LEU:HD22	1:A:320:LEU:HD22	2.01	0.41
1:A:181:ILE:HG23	1:A:182:ALA:N	2.35	0.41
1:A:218:ILE:HD12	1:A:222:LYS:HG2	2.02	0.41
1:A:204:VAL:HG13	1:A:205:ASP:N	2.35	0.41
1:A:254:ARG:NH1	1:A:254:ARG:HB3	2.29	0.41
1:A:150:VAL:O	1:A:154:ILE:HG13	2.21	0.41
2:B:378:DC:H6	2:B:378:DC:H5''	1.85	0.41
1:A:91:ASN:O	1:A:95:GLU:HG3	2.21	0.40
1:A:243:ARG:HH11	1:A:243:ARG:HA	1.86	0.40
1:A:254:ARG:CB	1:A:254:ARG:NH1	2.83	0.40
1:A:317:VAL:O	1:A:321:GLN:HG3	2.21	0.40

All (2) symmetry-related close contacts are listed below. The label for Atom-2 includes the sym-

metry operator and encoded unit-cell translations to be applied.

Atom-1	Atom-2	Distance(Å)	Clash(Å)
6:A:2100:HOH:O	6:A:2100:HOH:O[2_435]	2.08	0.12
6:A:2090:HOH:O	6:A:2095:HOH:O[1_556]	2.17	0.03

## 5.3 Torsion angles

### 5.3.1 Protein backbone ⓘ

In the following table, the Percentiles column shows the percent Ramachandran outliers of the chain as a percentile score with respect to all X-ray entries followed by that with respect to entries of similar resolution. The Analysed column shows the number of residues for which the backbone conformation was analysed, and the total number of residues.

Mol	Chain	Analysed	Favoured	Allowed	Outliers	Percentiles	
1	A	340/347 (98%)	309 (91%)	28 (8%)	3 (1%)	25	54

All (3) Ramachandran outliers are listed below:

Mol	Chain	Res	Type
1	A	278	ASP
1	A	11	TYR
1	A	25	LYS

### 5.3.2 Protein sidechains ⓘ

In the following table, the Percentiles column shows the percent sidechain outliers of the chain as a percentile score with respect to all X-ray entries followed by that with respect to entries of similar resolution. The Analysed column shows the number of residues for which the sidechain conformation was analysed, and the total number of residues.

Mol	Chain	Analysed	Rotameric	Outliers	Percentiles	
1	A	301/306 (98%)	291 (97%)	10 (3%)	50	81

All (10) residues with a non-rotameric sidechain are listed below:

Mol	Chain	Res	Type
1	A	2	MET
1	A	25	LYS
1	A	32	CYS
1	A	64	GLU

*Continued on next page...*

*Continued from previous page...*

Mol	Chain	Res	Type
1	A	80	GLU
1	A	118	ASP
1	A	174	ARG
1	A	178	GLU
1	A	239	ARG
1	A	243	ARG

Some sidechains can be flipped to improve hydrogen bonding and reduce clashes. All (6) such sidechains are listed below:

Mol	Chain	Res	Type
1	A	1	HIS
1	A	15	GLN
1	A	124	ASN
1	A	189	ASN
1	A	255	ASN
1	A	305	HIS

### 5.3.3 RNA ⓘ

There are no RNA chains in this entry.

## 5.4 Non-standard residues in protein, DNA, RNA chains ⓘ

1 non-standard protein/DNA/RNA residue is modelled in this entry.

In the following table, the Counts columns list the number of bonds (or angles) for which Mogul statistics could be retrieved, the number of bonds (or angles) that are observed in the model and the number of bonds (or angles) that are defined in the chemical component dictionary. The Link column lists molecule types, if any, to which the group is linked. The Z score for a bond length (or angle) is the number of standard deviations the observed value is removed from the expected value. A bond length (or angle) with  $|Z| > 2$  is considered an outlier worth inspection. RMSZ is the root-mean-square of all Z scores of the bond lengths (or angles).

Mol	Type	Chain	Res	Link	Bond lengths			Bond angles		
					Counts	RMSZ	$\# Z  > 2$	Counts	RMSZ	$\# Z  > 2$
2	PVX	B	374	2	51,53,54	4.93	19 (37%)	73,81,84	3.73	26 (35%)

In the following table, the Chirals column lists the number of chiral outliers, the number of chiral centers analysed, the number of these observed in the model and the number defined in the chemical component dictionary. Similar counts are reported in the Torsion and Rings columns. '-' means no outliers of that kind were identified.

Mol	Type	Chain	Res	Link	Chirals	Torsions	Rings
2	PVX	B	374	2	-	0/17/66/67	0/2/7/7

All (19) bond length outliers are listed below:

Mol	Chain	Res	Type	Atoms	Z	Observed(Å)	Ideal(Å)
2	B	374	PVX	O10-C11	27.94	1.46	1.33
2	B	374	PVX	C2A-C3	11.08	1.55	1.35
2	B	374	PVX	C2-N2	7.53	1.44	1.32
2	B	374	PVX	C6-N6	6.62	1.45	1.35
2	B	374	PVX	C2-N3	6.37	1.47	1.36
2	B	374	PVX	O-C4B	5.40	1.47	1.36
2	B	374	PVX	O10-CA1	4.87	1.45	1.36
2	B	374	PVX	CB1-C1	-4.72	1.41	1.49
2	B	374	PVX	C4-C5	4.11	1.48	1.41
2	B	374	PVX	C3A-C3	3.59	1.55	1.44
2	B	374	PVX	C5-N7	3.15	1.52	1.44
2	B	374	PVX	C2A-C1	3.12	1.53	1.43
2	B	374	PVX	C4B-C4A	2.94	1.49	1.42
2	B	374	PVX	O4-C4	-2.81	1.19	1.24
2	B	374	PVX	C4A-CA1	2.80	1.44	1.41
2	B	374	PVX	C6-N1	2.66	1.39	1.34
2	B	374	PVX	C11-CB1	2.52	1.45	1.38
2	B	374	PVX	C3A-CB1	-2.52	1.39	1.43
2	B	374	PVX	C5B-C4B	2.18	1.45	1.37

All (26) bond angle outliers are listed below:

Mol	Chain	Res	Type	Atoms	Z	Observed(°)	Ideal(°)
2	B	374	PVX	O10-C11-CB1	-24.03	118.12	125.82
2	B	374	PVX	C3A-C3-C2A	-7.91	103.21	109.35
2	B	374	PVX	C6-N6-C1D	-7.11	113.35	122.89
2	B	374	PVX	CB1-C3A-C4A	5.73	121.21	119.15
2	B	374	PVX	CB1-C3A-C3	5.23	110.70	107.64
2	B	374	PVX	O6A-C6A-C9A	4.57	111.01	105.94
2	B	374	PVX	C6A-O7-C8A	4.46	113.96	106.50
2	B	374	PVX	C5-C6-N6	-4.36	119.43	123.41
2	B	374	PVX	O-C4B-C4A	4.20	122.30	115.81
2	B	374	PVX	C5-N7-C8	-3.66	115.47	120.28
2	B	374	PVX	C3-C2A-C1	-3.62	105.48	109.98
2	B	374	PVX	C9B-C9A-C6A	-3.52	98.47	101.90
2	B	374	PVX	C6-C5-N7	3.18	124.84	120.23
2	B	374	PVX	N2-C2-N3	3.01	121.17	117.86
2	B	374	PVX	C3A-C4A-CA1	-2.95	116.59	118.32

*Continued on next page...*

Continued from previous page...

Mol	Chain	Res	Type	Atoms	Z	Observed(°)	Ideal(°)
2	B	374	PVX	O1-C1-C2A	-2.88	121.25	127.22
2	B	374	PVX	C5B-C5M-C9B	-2.74	121.70	124.23
2	B	374	PVX	O4D-C1D-C2D	2.69	111.56	106.25
2	B	374	PVX	O4D-C4D-C5D	2.55	118.46	109.36
2	B	374	PVX	CB1-C1-C2A	2.47	109.33	106.00
2	B	374	PVX	C3A-CB1-C1	2.45	111.28	108.37
2	B	374	PVX	O10-CA1-C4A	2.44	123.79	121.29
2	B	374	PVX	O4D-C1D-N6	2.34	112.11	109.89
2	B	374	PVX	O-C4B-C5B	-2.20	120.27	123.59
2	B	374	PVX	C4B-C4A-CA1	2.04	119.02	117.08
2	B	374	PVX	C5-C6-N1	2.02	124.76	118.95

There are no chirality outliers.

There are no torsion outliers.

There are no ring outliers.

## 5.5 Carbohydrates ⓘ

There are no carbohydrates in this entry.

## 5.6 Ligand geometry ⓘ

Of 4 ligands modelled in this entry, 3 are monoatomic - leaving 1 for Mogul analysis.

In the following table, the Counts columns list the number of bonds (or angles) for which Mogul statistics could be retrieved, the number of bonds (or angles) that are observed in the model and the number of bonds (or angles) that are defined in the chemical component dictionary. The Link column lists molecule types, if any, to which the group is linked. The Z score for a bond length (or angle) is the number of standard deviations the observed value is removed from the expected value. A bond length (or angle) with  $|Z| > 2$  is considered an outlier worth inspection. RMSZ is the root-mean-square of all Z scores of the bond lengths (or angles).

Mol	Type	Chain	Res	Link	Bond lengths			Bond angles		
					Counts	RMSZ	$\# Z  > 2$	Counts	RMSZ	$\# Z  > 2$
4	TTP	A	400	5	30,30,30	3.02	10 (33%)	42,47,47	2.47	10 (23%)

In the following table, the Chirals column lists the number of chiral outliers, the number of chiral centers analysed, the number of these observed in the model and the number defined in the chemical component dictionary. Similar counts are reported in the Torsion and Rings columns. '-' means no outliers of that kind were identified.

Mol	Type	Chain	Res	Link	Chirals	Torsions	Rings
4	TTP	A	400	5	-	0/19/34/34	0/2/2/2

All (10) bond length outliers are listed below:

Mol	Chain	Res	Type	Atoms	Z	Observed(Å)	Ideal(Å)
4	A	400	TTP	O3'-C3'	-8.63	1.23	1.43
4	A	400	TTP	C4-N3	6.34	1.47	1.37
4	A	400	TTP	PA-O3A	-6.05	1.48	1.59
4	A	400	TTP	O5'-C5'	-5.57	1.21	1.44
4	A	400	TTP	PB-O3B	-5.09	1.50	1.59
4	A	400	TTP	PG-O3B	-4.81	1.51	1.60
4	A	400	TTP	C1'-N1	3.20	1.58	1.48
4	A	400	TTP	C6-N1	2.57	1.40	1.34
4	A	400	TTP	C6-C5	-2.10	1.34	1.40
4	A	400	TTP	PA-O2A	-2.02	1.46	1.55

All (10) bond angle outliers are listed below:

Mol	Chain	Res	Type	Atoms	Z	Observed(°)	Ideal(°)
4	A	400	TTP	O4'-C1'-N1	6.52	119.93	107.68
4	A	400	TTP	O4'-C4'-C5'	-5.59	89.39	109.36
4	A	400	TTP	C6-N1-C2	-5.27	120.91	122.41
4	A	400	TTP	O3B-PB-O3A	-4.86	91.78	101.66
4	A	400	TTP	O5'-C5'-C4'	4.68	126.11	108.94
4	A	400	TTP	C2'-C1'-N1	-4.06	103.55	114.08
4	A	400	TTP	O2A-PA-O5'	3.46	125.97	108.51
4	A	400	TTP	C5M-C5-C4	-3.36	117.62	121.04
4	A	400	TTP	C5-C6-N1	3.20	124.70	121.59
4	A	400	TTP	O4'-C4'-C3'	2.52	112.05	105.66

There are no chirality outliers.

There are no torsion outliers.

There are no ring outliers.

## 5.7 Other polymers ⓘ

There are no such residues in this entry.

## 5.8 Polymer linkage issues

There are no chain breaks in this entry.

## 6 Fit of model and data ⓘ

### 6.1 Protein, DNA and RNA chains ⓘ

In the following table, the column labelled ‘#RSRZ> 2’ contains the number (and percentage) of RSRZ outliers, followed by percent RSRZ outliers for the chain as percentile scores relative to all X-ray entries and entries of similar resolution. The OWAB column contains the minimum, median, 95<sup>th</sup> percentile and maximum values of the occupancy-weighted average B-factor per residue. The column labelled ‘Q< 0.9’ lists the number of (and percentage) of residues with an average occupancy less than 0.9.

Mol	Chain	Analysed	<RSRZ>	#RSRZ>2	OWAB(Å <sup>2</sup> )	Q<0.9
1	A	342/347 (98%)	0.16	5 (1%) 70 76	8, 33, 58, 77	1 (0%)
2	B	15/15 (100%)	-0.11	0 100 100	22, 41, 60, 70	0
3	C	13/13 (100%)	-0.27	0 100 100	20, 31, 62, 70	0
All	All	370/375 (98%)	0.13	5 (1%) 74 78	8, 33, 59, 77	1 (0%)

All (5) RSRZ outliers are listed below:

Mol	Chain	Res	Type	RSRZ
1	A	327	ASP	3.7
1	A	193	GLU	2.9
1	A	217	MET	2.6
1	A	278	ASP	2.1
1	A	326	GLU	2.0

### 6.2 Non-standard residues in protein, DNA, RNA chains ⓘ

In the following table, the Atoms column lists the number of modelled atoms in the group and the number defined in the chemical component dictionary. LLDF column lists the quality of electron density of the group with respect to its neighbouring residues in protein, DNA or RNA chains. The B-factors column lists the minimum, median, 95<sup>th</sup> percentile and maximum values of B factors of atoms in the group. The column labelled ‘Q< 0.9’ lists the number of atoms with occupancy less than 0.9.

Mol	Type	Chain	Res	Atoms	RSR	LLDF	B-factors(Å <sup>2</sup> )	Q<0.9
2	PVX	B	374	47/48	0.16	-0.55	9,21,30,34	0

### 6.3 Carbohydrates ⓘ

There are no carbohydrates in this entry.



## 6.4 Ligands

In the following table, the Atoms column lists the number of modelled atoms in the group and the number defined in the chemical component dictionary. LLDF column lists the quality of electron density of the group with respect to its neighbouring residues in protein, DNA or RNA chains. The B-factors column lists the minimum, median, 95<sup>th</sup> percentile and maximum values of B factors of atoms in the group. The column labelled 'Q < 0.9' lists the number of atoms with occupancy less than 0.9.

Mol	Type	Chain	Res	Atoms	RSR	LLDF	B-factors(Å <sup>2</sup> )	Q<0.9
4	TTP	A	400	29/29	0.19	0.82	20,28,33,36	0
5	CA	A	1001	1/1	0.18	0.10	39,39,39,39	0
5	CA	A	1003	1/1	0.09	-3.28	39,39,39,39	0
5	CA	A	1002	1/1	0.10	-4.58	15,15,15,15	0

## 6.5 Other polymers

There are no such residues in this entry.