



Full wwPDB X-ray Structure Validation Report

Feb 28, 2014 – 12:14 PM GMT

PDB ID : 3PYB
Title : Crystal structure of ent-copalyl diphosphate synthase from Arabidopsis thaliana in complex with 13-aza-13,14-dihydrocopalyldiphosphate
Authors : Koksai, M.; Christianson, D.W.
Deposited on : 2010-12-12
Resolution : 2.76 Å(reported)

This is a full wwPDB validation report for a publicly released PDB entry.
We welcome your comments at validation@mail.wwpdb.org
A user guide is available at <http://wwpdb.org/ValidationPDFNotes.html>

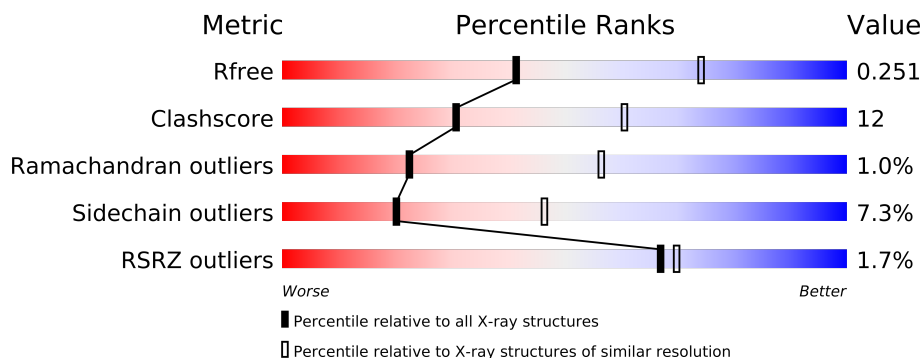
The following versions of software and data (see [references](#)) were used in the production of this report:

MolProbity : 4.02b-467
Mogul : 1.15 2013
Xtriage (Phenix) : dev-1323
EDS : stable22639
Percentile statistics : 21963
Refmac : 5.8.0049
CCP4 : 6.3.0 (Settle)
Ideal geometry (proteins) : Engh & Huber (2001)
Ideal geometry (DNA, RNA) : Parkinson et. al. (1996)
Validation Pipeline (wwPDB-VP) : stable22683

1 Overall quality at a glance

The reported resolution of this entry is 2.76 Å.

Percentile scores (ranging between 0-100) for global validation metrics of the entry are shown in the following graphic. The table shows the number of entries on which the scores are based.



Metric	Whole archive (#Entries)	Similar resolution (#Entries, resolution range(Å))
R_{free}	66092	2406 (2.80-2.72)
Clashscore	79885	2995 (2.80-2.72)
Ramachandran outliers	78287	2941 (2.80-2.72)
Sidechain outliers	78261	2944 (2.80-2.72)
RSRZ outliers	66119	2409 (2.80-2.72)

The table below summarises the geometric issues observed across the polymeric chains and their fit to the electron density. The red, orange, yellow and green segments on the lower bar indicate the fraction of residues that contain outliers for ≥ 3 , 2, 1 and 0 types of geometric quality criteria. The upper red bar (where present) indicates the fraction of residues that have poor fit to the electron density.

Mol	Chain	Length	Quality of chain
1	A	727	
1	B	727	
1	C	727	

The following table lists non-polymeric compounds that are outliers for geometric or electron-density-fit criteria:

Mol	Type	Chain	Res	Geometry	Electron density
3	1PE	A	921	-	X
3	1PE	A	931	-	X
3	1PE	B	921	-	X
3	1PE	B	931	-	X
3	1PE	C	911	-	X

2 Entry composition

There are 4 unique types of molecules in this entry. The entry contains 17263 atoms, of which 0 are hydrogen and 0 are deuterium.

In the tables below, the ZeroOcc column contains the number of atoms modelled with zero occupancy, the AltConf column contains the number of residues with at least one atom in alternate conformation and the Trace column contains the number of residues modelled with at most 2 atoms.

- Molecule 1 is a protein called Ent-copalyl diphosphate synthase, chloroplastic.

Mol	Chain	Residues	Atoms					ZeroOcc	AltConf	Trace
1	A	685	Total	C	N	O	S	0	4	0
			5633	3618	948	1038	29			
1	B	689	Total	C	N	O	S	0	1	0
			5649	3622	952	1046	29			
1	C	685	Total	C	N	O	S	0	0	0
			5607	3598	943	1037	29			

There are 27 discrepancies between the modelled and reference sequences:

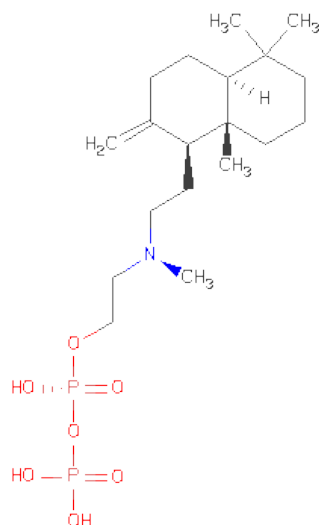
Chain	Residue	Modelled	Actual	Comment	Reference
A	84	MET	-	EXPRESSION TAG	UNP Q38802
A	803	GLY	-	EXPRESSION TAG	UNP Q38802
A	804	SER	-	EXPRESSION TAG	UNP Q38802
A	805	HIS	-	EXPRESSION TAG	UNP Q38802
A	806	HIS	-	EXPRESSION TAG	UNP Q38802
A	807	HIS	-	EXPRESSION TAG	UNP Q38802
A	808	HIS	-	EXPRESSION TAG	UNP Q38802
A	809	HIS	-	EXPRESSION TAG	UNP Q38802
A	810	HIS	-	EXPRESSION TAG	UNP Q38802
B	84	MET	-	EXPRESSION TAG	UNP Q38802
B	803	GLY	-	EXPRESSION TAG	UNP Q38802
B	804	SER	-	EXPRESSION TAG	UNP Q38802
B	805	HIS	-	EXPRESSION TAG	UNP Q38802
B	806	HIS	-	EXPRESSION TAG	UNP Q38802
B	807	HIS	-	EXPRESSION TAG	UNP Q38802
B	808	HIS	-	EXPRESSION TAG	UNP Q38802
B	809	HIS	-	EXPRESSION TAG	UNP Q38802
B	810	HIS	-	EXPRESSION TAG	UNP Q38802
C	84	MET	-	EXPRESSION TAG	UNP Q38802
C	803	GLY	-	EXPRESSION TAG	UNP Q38802
C	804	SER	-	EXPRESSION TAG	UNP Q38802
C	805	HIS	-	EXPRESSION TAG	UNP Q38802
C	806	HIS	-	EXPRESSION TAG	UNP Q38802

Continued on next page...

Continued from previous page...

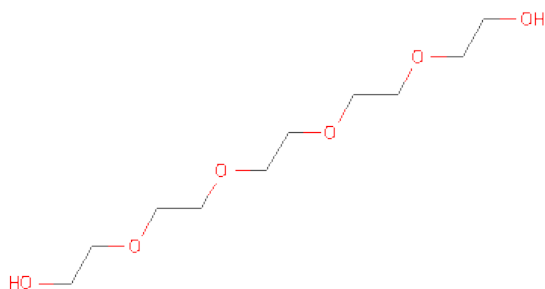
Chain	Residue	Modelled	Actual	Comment	Reference
C	807	HIS	-	EXPRESSION TAG	UNP Q38802
C	808	HIS	-	EXPRESSION TAG	UNP Q38802
C	809	HIS	-	EXPRESSION TAG	UNP Q38802
C	810	HIS	-	EXPRESSION TAG	UNP Q38802

- Molecule 2 is 2-(METHYL{2-[(1S,4AS,8AS)-5,5,8A-TRIMETHYL-2-METHYLIDE NEDECAHYDRONAPHTHALEN-1-YL]ETHYL}AMINO)ETHYLTRIHYDROGEN DIPHOSPHATE (three-letter code: A3C) (formula: C₁₉H₃₇NO₇P₂).



Mol	Chain	Residues	Atoms					ZeroOcc	AltConf
			Total	C	N	O	P		
2	A	1	29	19	1	7	2	0	0

- Molecule 3 is PENTAETHYLENE GLYCOL (three-letter code: 1PE) (formula: C₁₀H₂₂O₆).



Mol	Chain	Residues	Atoms			ZeroOcc	AltConf
3	A	1	Total	C	O	0	0
			16	10	6		
3	A	1	Total	C	O	0	0
			16	10	6		
3	A	1	Total	C	O	0	0
			16	10	6		
3	A	1	Total	C	O	0	0
			16	10	6		
3	B	1	Total	C	O	0	0
			16	10	6		
3	B	1	Total	C	O	0	0
			16	10	6		
3	B	1	Total	C	O	0	0
			16	10	6		
3	C	1	Total	C	O	0	0
			16	10	6		
3	C	1	Total	C	O	0	0
			16	10	6		

- Molecule 4 is water.

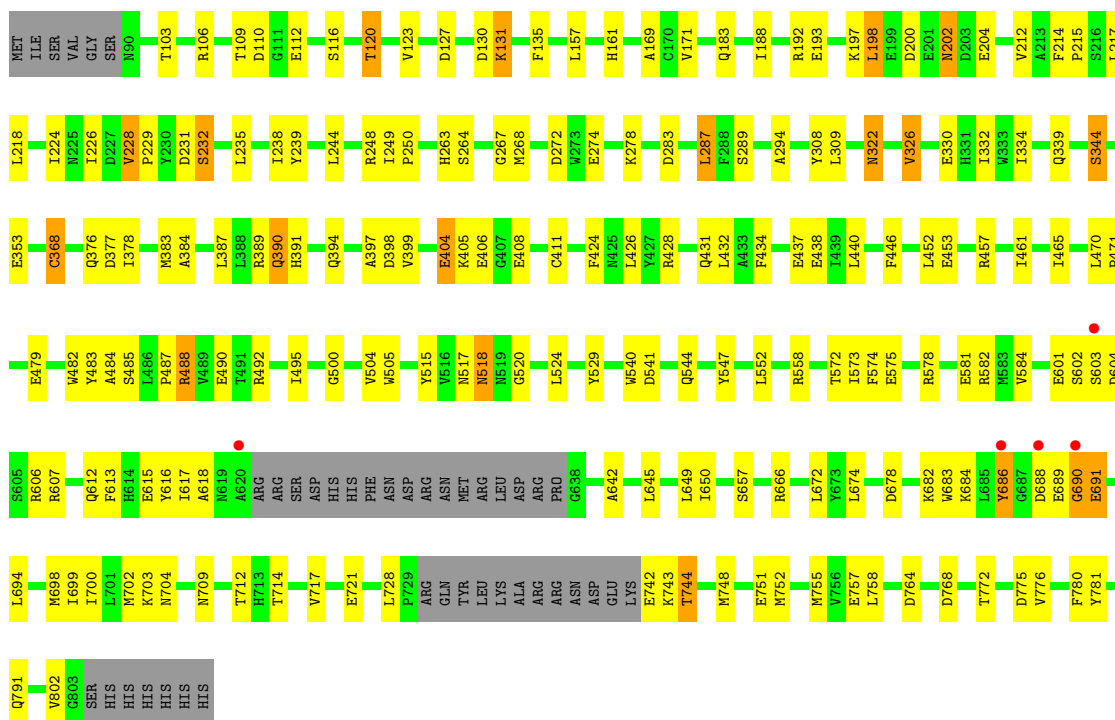
Mol	Chain	Residues	Atoms		ZeroOcc	AltConf
4	A	84	Total	O	0	0
			84	84		
4	B	68	Total	O	0	0
			68	68		
4	C	49	Total	O	0	0
			49	49		

3 Residue-property plots

These plots are drawn for all protein, RNA and DNA chains in the entry. The first graphic for a chain summarises the proportions of errors displayed in the second graphic. The second graphic shows the sequence view annotated by issues in geometry and electron density. Residues are color-coded according to the number of geometric quality criteria for which they contain at least one outlier: green = 0, yellow = 1, orange = 2 and red = 3 or more. A red dot above a residue indicates a poor fit to the electron density ($RSRZ > 2$). Stretches of 2 or more consecutive residues without any outlier are shown as a green connector. Residues present in the sample, but not in the model, are shown in grey.

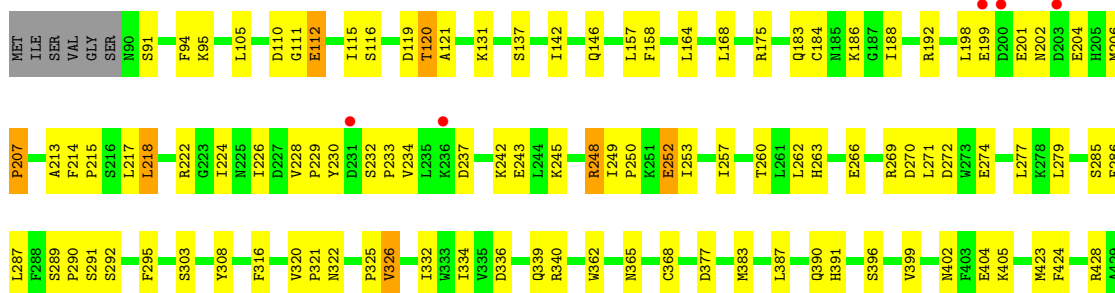
- Molecule 1: Ent-copalyl diphosphate synthase, chloroplastic

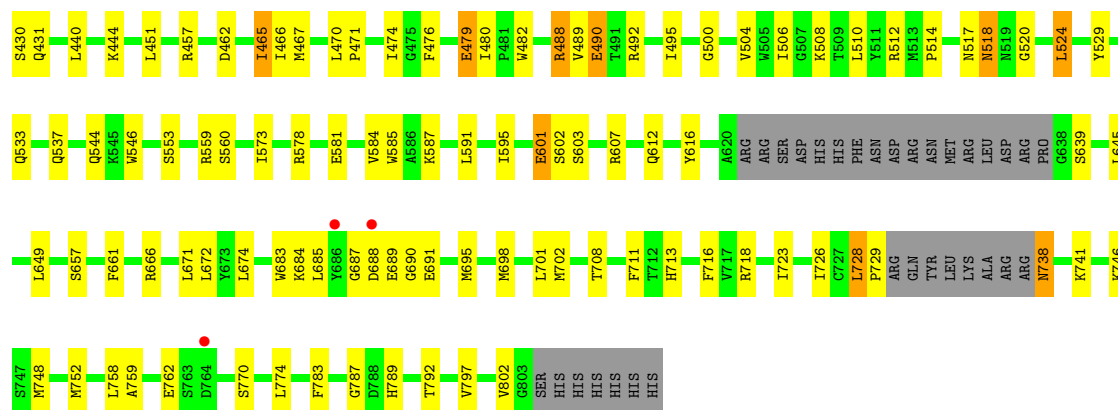
Chain A: 



- Molecule 1: Ent-copalyl diphosphate synthase, chloroplastic

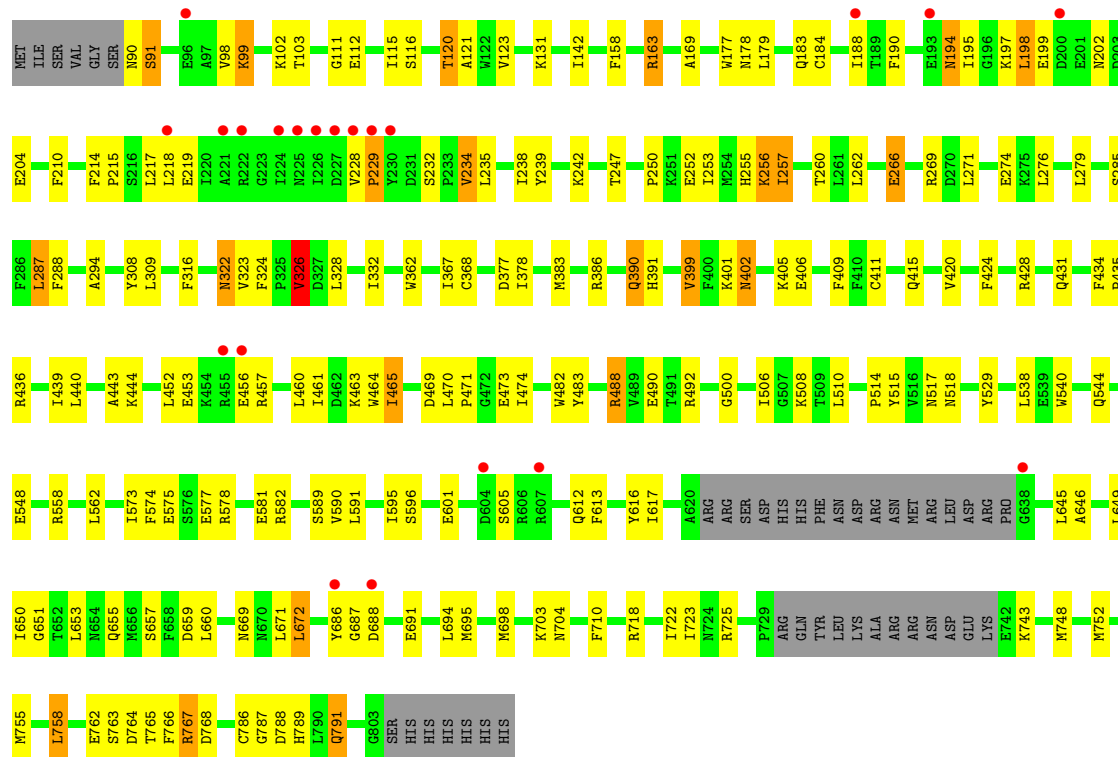
Chain B: 





● Molecule 1: Ent-copalyl diphosphate synthase, chloroplastic

Chain C:



4 Data and refinement statistics

Property	Value	Source
Space group	P 21 21 21	Depositor
Cell constants a, b, c, α , β , γ	63.74Å 188.55Å 229.07Å 90.00° 90.00° 90.00°	Depositor
Resolution (Å)	44.52 – 2.76 44.52 – 2.76	Depositor EDS
% Data completeness (in resolution range)	86.1 (44.52-2.76) 86.1 (44.52-2.76)	Depositor EDS
R_{merge}	0.14	Depositor
R_{sym}	0.14	Depositor
$\langle I/\sigma(I) \rangle$ ¹	2.09 (at 2.77Å)	Xtriage
Refinement program	PHENIX (phenix.refine: 1.5.2)	Depositor
R, R_{free}	0.177 , 0.257 0.167 , 0.251	Depositor DCC
R_{free} test set	1839 reflections (2.96%)	DCC
Wilson B-factor (Å ²)	46.4	Xtriage
Anisotropy	0.741	Xtriage
Bulk solvent k_{sol} (e/Å ³), B_{sol} (Å ²)	0.32 , 35.1	EDS
Estimated twinning fraction	No twinning to report.	Xtriage
L-test for twinning	$\langle L \rangle = 0.49$, $\langle L^2 \rangle = 0.32$	Xtriage
Outliers	0 of 67470 reflections	Xtriage
F_o, F_c correlation	0.95	EDS
Total number of atoms	17263	wwPDB-VP
Average B, all atoms (Å ²)	59.0	wwPDB-VP

Xtriage's analysis on translational NCS is as follows: *The largest off-origin peak in the Patterson function is 2.88% of the height of the origin peak. No significant pseudotranslation is detected.*

¹Intensities estimated from amplitudes.

5 Model quality

5.1 Standard geometry

Bond lengths and bond angles in the following residue types are not validated in this section: A3C, 1PE

The Z score for a bond length (or angle) is the number of standard deviations the observed value is removed from the expected value. A bond length (or angle) with $|Z| > 5$ is considered an outlier worth inspection. RMSZ is the root-mean-square of all Z scores of the bond lengths (or angles).

Mol	Chain	Bond lengths		Bond angles	
		RMSZ	# $ Z > 5$	RMSZ	# $ Z > 5$
1	A	0.29	0/5785	0.44	0/7817
1	B	0.27	0/5790	0.42	0/7823
1	C	0.27	0/5745	0.42	0/7764
All	All	0.28	0/17320	0.43	0/23404

There are no bond length outliers.

There are no bond angle outliers.

There are no chirality outliers.

There are no planarity outliers.

5.2 Close contacts

In the following table, the Non-H and H(model) columns list the number of non-hydrogen atoms and hydrogen atoms in the chain respectively. The H(added) column lists the number of hydrogens added by MolProbity. The Clashes column lists the number of clashes within the asymmetric unit, and the number in parentheses is this value normalized per 1000 atoms of the molecule in the chain. The Symm-Clashes column gives symmetry related clashes, in the same way as for the Clashes column.

Mol	Chain	Non-H	H(model)	H(added)	Clashes	Symm-Clashes
1	A	5633	0	5486	123	0
1	B	5649	0	5494	136	0
1	C	5607	0	5452	133	0
2	A	29	0	34	6	0
3	A	64	0	88	2	0
3	B	48	0	66	2	0
3	C	32	0	44	4	0
4	A	84	0	0	0	0
4	B	68	0	0	0	0

Continued on next page...

Continued from previous page...

Mol	Chain	Non-H	H(model)	H(added)	Clashes	Symm-Clashes
4	C	49	0	0	1	0
All	All	17263	0	16664	397	0

Clashscore is defined as the number of clashes calculated for the entry per 1000 atoms (including hydrogens) of the entry. The overall clashscore for this entry is 12.

All (397) close contacts within the same asymmetric unit are listed below.

Atom-1	Atom-2	Distance(Å)	Clash(Å)
1:C:163:ARG:HH11	1:C:163:ARG:HG2	1.23	1.04
1:C:431:GLN:HE22	1:C:482:TRP:H	1.10	0.98
1:B:728:LEU:HB3	1:B:729:PRO:HD2	1.44	0.97
1:C:453:GLU:HB3	1:C:457:ARG:HH12	1.27	0.94
1:A:431:GLN:HE22	1:A:482:TRP:H	1.17	0.90
1:B:215:PRO:HB2	1:B:242:LYS:HD2	1.54	0.88
1:B:504:VAL:HG22	1:B:512:ARG:HH12	1.38	0.88
1:C:163:ARG:HH11	1:C:163:ARG:CG	1.88	0.86
1:C:431:GLN:NE2	1:C:482:TRP:H	1.71	0.86
1:A:431:GLN:NE2	1:A:482:TRP:H	1.81	0.79
1:A:686:TYR:HD2	1:A:689:GLU:HG3	1.48	0.78
1:B:518:ASN:ND2	1:B:520:GLY:H	1.81	0.77
1:C:253:ILE:HG23	1:C:257:ILE:HD11	1.66	0.77
1:C:452:LEU:O	1:C:456:GLU:HG2	1.84	0.77
1:A:601:GLU:HG2	1:A:602:SER:H	1.49	0.76
1:A:103:THR:HG22	1:A:106[A]:ARG:HH22	1.50	0.76
1:B:120:THR:HG22	1:B:320:VAL:H	1.52	0.74
1:B:728:LEU:HB3	1:B:729:PRO:CD	2.17	0.73
1:C:562:LEU:HD12	1:C:590:VAL:HG21	1.71	0.72
1:C:453:GLU:HB3	1:C:457:ARG:NH1	2.05	0.71
1:A:112:GLU:HG3	1:A:515:TYR:CE1	2.25	0.71
1:C:215:PRO:HB2	1:C:242:LYS:HD2	1.71	0.71
1:C:195:ILE:HD11	1:C:235:LEU:HD21	1.71	0.71
1:A:272:ASP:OD1	1:A:274:GLU:HB3	1.92	0.70
1:C:169:ALA:HB2	1:C:217:LEU:HD21	1.74	0.70
1:A:518:ASN:ND2	1:A:520:GLY:H	1.90	0.69
1:A:518:ASN:HD22	1:A:520:GLY:N	1.89	0.69
2:A:901:A3C:H11	2:A:901:A3C:H31	1.73	0.68
1:B:683:TRP:HD1	1:B:688:ASP:HA	1.58	0.68
1:C:112:GLU:HG3	1:C:515:TYR:CE1	2.28	0.68
1:C:111:GLY:HA3	1:C:326:VAL:HG12	1.75	0.68
1:A:666:ARG:HG2	1:A:666:ARG:HH11	1.57	0.68
1:C:90:ASN:O	1:C:91:SER:HB2	1.94	0.68
1:A:212:VAL:HG12	1:A:267:GLY:HA3	1.74	0.67

Continued on next page...

Continued from previous page...

Atom-1	Atom-2	Distance(Å)	Clash(Å)
1:B:512:ARG:HG2	1:B:512:ARG:HH11	1.60	0.67
1:C:431:GLN:HE22	1:C:482:TRP:N	1.88	0.67
1:B:207:PRO:HB3	1:B:508:LYS:O	1.94	0.66
1:C:362:TRP:CZ2	1:C:399:VAL:HG21	2.30	0.66
1:A:390:GLN:HG2	1:A:391:HIS:CD2	2.31	0.66
1:A:405:LYS:HG2	1:A:406:GLU:HG2	1.77	0.66
1:B:116:SER:O	1:B:120:THR:HG23	1.96	0.66
1:B:500:GLY:O	1:B:517:ASN:HB3	1.96	0.65
1:C:163:ARG:NH1	1:C:163:ARG:HG2	2.00	0.65
1:B:726:ILE:HG23	1:B:748:MET:HG2	1.78	0.65
1:A:244:LEU:HD21	1:A:248:ARG:NH2	2.12	0.65
1:C:131:LYS:HD2	1:C:131:LYS:N	2.13	0.64
1:C:362:TRP:HZ2	1:C:399:VAL:HG21	1.64	0.62
1:C:190:PHE:O	1:C:194:ASN:HB2	1.99	0.62
1:B:431:GLN:NE2	1:B:482:TRP:H	1.97	0.62
1:A:601:GLU:HG2	1:A:602:SER:N	2.14	0.62
1:A:431:GLN:HE22	1:A:482:TRP:N	1.95	0.62
1:B:691:GLU:O	1:B:695:MET:HG2	2.00	0.62
1:B:430:SER:HA	1:B:440:LEU:HD22	1.81	0.62
1:B:105:LEU:HD21	1:B:334:ILE:HG21	1.81	0.61
1:A:214:PHE:HB3	1:A:215:PRO:HD3	1.80	0.61
1:A:202:ASN:ND2	1:A:202:ASN:H	1.98	0.61
1:A:229:PRO:O	1:A:235:LEU:HD12	1.99	0.61
1:C:238:ILE:HD12	1:C:239:TYR:N	2.16	0.61
1:B:326:VAL:O	1:B:326:VAL:HG13	1.99	0.61
1:A:465:ILE:HD13	1:A:505:TRP:CD2	2.36	0.61
1:B:111:GLY:HA3	1:B:326:VAL:HG12	1.82	0.61
1:C:285:SER:HB3	1:C:308:TYR:CE2	2.36	0.61
1:A:518:ASN:ND2	1:A:520:GLY:N	2.49	0.60
1:A:294:ALA:HA	1:A:309:LEU:HD11	1.82	0.60
1:B:199:GLU:HB2	1:B:234:VAL:HB	1.81	0.60
1:B:518:ASN:HD22	1:B:520:GLY:N	1.99	0.60
1:B:489:VAL:HG22	1:B:797:VAL:HG21	1.83	0.60
1:A:603:SER:HA	1:A:606:ARG:NH2	2.16	0.60
1:C:401:LYS:HG2	1:C:439:ILE:HD12	1.83	0.60
1:B:431:GLN:HE22	1:B:482:TRP:H	1.50	0.60
1:C:378:ILE:HG22	1:C:411:CYS:HA	1.83	0.60
1:A:326:VAL:O	1:A:326:VAL:HG13	2.01	0.60
1:B:518:ASN:HD22	1:B:520:GLY:H	1.46	0.59
1:C:266:GLU:OE2	1:C:508:LYS:HE2	2.02	0.59
1:C:657:SER:HB2	1:C:672:LEU:HD12	1.84	0.59
1:B:698:MET:HE2	1:B:701:LEU:HD12	1.83	0.59

Continued on next page...

Continued from previous page...

Atom-1	Atom-2	Distance(Å)	Clash(Å)
1:B:518:ASN:ND2	1:B:520:GLY:N	2.50	0.59
1:B:332:ILE:HG21	1:B:383:MET:HB3	1.84	0.59
1:A:453:GLU:O	1:A:457:ARG:HG3	2.03	0.59
1:C:218:LEU:HD21	1:C:235:LEU:HD13	1.85	0.59
1:B:232:SER:OG	1:B:233:PRO:HD2	2.03	0.59
1:B:213:ALA:O	1:B:217:LEU:HB2	2.03	0.58
1:A:116:SER:O	1:A:120:THR:HG23	2.03	0.58
1:B:336:ASP:O	1:B:340:ARG:HG3	2.03	0.58
1:A:518:ASN:HD22	1:A:520:GLY:H	1.49	0.58
1:B:533:GLN:O	1:B:537:GLN:HG3	2.03	0.58
1:C:326:VAL:O	1:C:326:VAL:HG13	2.02	0.58
1:A:686:TYR:HB2	1:A:689:GLU:OE1	2.03	0.58
1:C:500:GLY:O	1:C:517:ASN:HB3	2.04	0.58
1:C:646:ALA:O	1:C:650:ILE:HD13	2.02	0.58
1:B:601:GLU:HG2	1:B:602:SER:H	1.68	0.58
2:A:901:A3C:H13B	2:A:901:A3C:O01	2.03	0.57
1:A:575:GLU:OE1	1:A:578:ARG:HD3	2.04	0.57
1:C:752:MET:O	1:C:755:MET:HB3	2.04	0.57
1:B:465:ILE:HG13	1:B:467:MET:HG3	1.85	0.57
1:C:492:ARG:HD3	1:C:529:TYR:CE2	2.39	0.57
1:A:192:ARG:HG2	1:A:229:PRO:HD3	1.87	0.57
1:C:514:PRO:O	1:C:518:ASN:HB2	2.05	0.57
1:A:483:TYR:CE1	3:A:911:1PE:H162	2.40	0.57
1:B:404:GLU:HG2	1:B:405:LYS:N	2.19	0.57
1:B:214:PHE:HB3	1:B:215:PRO:HD3	1.86	0.57
1:A:330:GLU:O	1:A:334:ILE:HG13	2.03	0.57
1:A:263:HIS:CE1	1:A:289:SER:HB2	2.40	0.56
1:C:420:VAL:HG23	4:C:826:HOH:O	2.06	0.56
1:A:617:ILE:HG22	1:A:618:ALA:N	2.19	0.56
1:A:408:GLU:HG2	1:A:446:PHE:CE1	2.40	0.56
1:B:495:ILE:HG21	1:B:802:VAL:HG11	1.87	0.56
1:A:500:GLY:O	1:A:517:ASN:HB3	2.05	0.56
1:C:285:SER:HB3	1:C:308:TYR:CD2	2.41	0.56
1:C:198:LEU:O	1:C:198:LEU:HD22	2.06	0.56
1:C:215:PRO:O	1:C:219:GLU:HG2	2.05	0.56
1:C:718:ARG:O	1:C:722:ILE:HG13	2.05	0.55
1:B:424:PHE:CZ	1:B:428:ARG:HD2	2.41	0.55
1:B:687:GLY:O	1:B:689:GLU:HG2	2.05	0.55
1:A:484:ALA:HB2	1:A:781:TYR:HD2	1.71	0.55
1:B:479:GLU:HG2	1:B:480:ILE:HG12	1.88	0.55
1:C:402:ASN:H	1:C:402:ASN:ND2	2.03	0.55
1:C:90:ASN:O	1:C:91:SER:CB	2.55	0.55

Continued on next page...

Continued from previous page...

Atom-1	Atom-2	Distance(Å)	Clash(Å)
1:B:657:SER:HB3	1:B:672:LEU:HD12	1.87	0.55
1:B:573:ILE:HG23	1:B:578:ARG:NH1	2.22	0.54
1:C:390:GLN:HG2	1:C:391:HIS:CD2	2.42	0.54
1:B:683:TRP:CD1	1:B:688:ASP:HA	2.39	0.54
1:B:269:ARG:O	1:B:271:LEU:HG	2.06	0.54
2:A:901:A3C:C11	2:A:901:A3C:H31	2.36	0.54
1:A:212:VAL:CG1	1:A:267:GLY:HA3	2.37	0.54
1:A:657:SER:HB3	1:A:672:LEU:HD12	1.88	0.54
1:B:424:PHE:HA	1:B:451:LEU:HD11	1.89	0.54
1:A:112:GLU:HG3	1:A:515:TYR:CZ	2.43	0.54
1:B:601:GLU:H	1:B:601:GLU:CD	2.11	0.54
1:C:691:GLU:HG3	1:C:695:MET:HE2	1.89	0.54
1:A:322:ASN:H	1:A:322:ASN:HD22	1.55	0.54
1:A:215:PRO:HG3	1:A:238:ILE:HD13	1.90	0.54
1:A:404:GLU:HG2	1:A:408:GLU:O	2.08	0.54
1:C:322:ASN:HD22	1:C:322:ASN:C	2.11	0.54
1:A:465:ILE:HD12	1:A:504:VAL:O	2.07	0.54
1:B:444:LYS:HE2	3:B:911:1PE:OH6	2.08	0.54
1:C:115:ILE:HD11	1:C:316:PHE:HB3	1.89	0.54
1:A:686:TYR:CD2	1:A:689:GLU:HG3	2.37	0.53
1:A:717:VAL:O	1:A:721:GLU:HG3	2.07	0.53
1:B:168:LEU:HD21	1:B:218:LEU:HD13	1.90	0.53
1:C:271:LEU:HD22	1:C:276:LEU:HD11	1.89	0.53
1:C:390:GLN:HG2	1:C:391:HIS:HD2	1.73	0.53
1:B:285:SER:HB3	1:B:308:TYR:CE2	2.43	0.53
1:A:744:THR:O	1:A:748:MET:HG3	2.09	0.53
1:A:540:TRP:O	1:A:544:GLN:HG3	2.08	0.53
1:C:488:ARG:HD3	1:C:574:PHE:CG	2.45	0.52
1:B:228:VAL:O	1:B:230:TYR:N	2.43	0.52
1:B:404:GLU:HG2	1:B:405:LYS:H	1.75	0.52
1:C:483:TYR:CE1	3:C:911:1PE:H262	2.43	0.52
1:C:288:PHE:HB3	1:C:324:PHE:O	2.08	0.52
1:B:506:ILE:HG13	1:B:510:LEU:CD2	2.39	0.52
1:A:378:ILE:HG22	1:A:411:CYS:HA	1.91	0.52
1:C:444:LYS:HE2	3:C:911:1PE:H241	1.92	0.52
1:B:726:ILE:O	1:B:728:LEU:HG	2.10	0.52
1:A:700:ILE:O	1:A:703:LYS:HG3	2.10	0.52
1:A:202:ASN:HD22	1:A:202:ASN:H	1.58	0.51
1:C:405:LYS:HG2	1:C:406:GLU:HG3	1.92	0.51
1:B:115:ILE:HD11	1:B:316:PHE:HB3	1.91	0.51
1:B:146:GLN:OE1	1:B:186:LYS:HE2	2.10	0.51
1:B:672:LEU:HD23	1:B:701:LEU:CD1	2.41	0.51

Continued on next page...

Continued from previous page...

Atom-1	Atom-2	Distance(Å)	Clash(Å)
1:A:484:ALA:HB2	1:A:781:TYR:CD2	2.45	0.51
1:A:397:ALA:HB3	1:A:437:GLU:HG2	1.91	0.51
1:C:99:LYS:O	1:C:103:THR:HG23	2.11	0.51
1:C:163:ARG:NH1	1:C:163:ARG:CG	2.58	0.51
1:B:462:ASP:HB3	1:B:465:ILE:HG23	1.92	0.50
1:A:283:ASP:O	1:A:308:TYR:HB2	2.11	0.50
1:C:575:GLU:OE1	1:C:578:ARG:HD3	2.11	0.50
1:C:378:ILE:CG2	1:C:411:CYS:HA	2.40	0.50
1:C:322:ASN:HD22	1:C:323:VAL:N	2.10	0.50
1:B:603:SER:O	1:B:607:ARG:HG3	2.12	0.50
1:A:378:ILE:HD11	1:A:426:LEU:HD13	1.93	0.50
1:A:700:ILE:HA	1:A:703:LYS:HG3	1.94	0.50
1:B:476:PHE:CE2	1:B:490:GLU:HG2	2.46	0.50
1:C:791:GLN:HA	1:C:791:GLN:HE21	1.76	0.50
1:B:759:ALA:HA	1:B:770:SER:HB2	1.92	0.50
2:A:901:A3C:C31	2:A:901:A3C:C11	2.89	0.50
1:B:672:LEU:HD23	1:B:701:LEU:HD13	1.94	0.50
1:A:198:LEU:HD22	1:A:198:LEU:O	2.12	0.50
1:B:512:ARG:NH1	1:B:512:ARG:HG2	2.25	0.49
1:C:612:GLN:O	1:C:616:TYR:HB2	2.12	0.49
1:B:368:CYS:HA	1:B:377:ASP:OD1	2.11	0.49
1:B:783:PHE:O	1:B:787:GLY:HA3	2.12	0.49
1:A:171:VAL:HG11	1:A:188:ILE:HG12	1.92	0.49
1:B:164:LEU:CD1	1:B:198:LEU:HB2	2.42	0.49
1:C:332:ILE:HG21	1:C:383:MET:HB3	1.93	0.49
1:A:492:ARG:HD3	1:A:529:TYR:CZ	2.47	0.49
1:B:544:GLN:HE21	1:B:559:ARG:HE	1.60	0.49
1:B:451:LEU:HD22	1:B:474:ILE:HG21	1.93	0.49
1:C:748:MET:O	1:C:752:MET:HB2	2.13	0.49
1:C:465:ILE:O	1:C:465:ILE:HG13	2.12	0.49
1:C:791:GLN:CA	1:C:791:GLN:HE21	2.26	0.48
1:A:495:ILE:HG21	1:A:802:VAL:HG11	1.95	0.48
1:C:463:LYS:HE3	1:C:464:TRP:CZ2	2.48	0.48
1:B:91:SER:O	1:B:95:LYS:HG3	2.12	0.48
1:C:698:MET:HA	1:C:698:MET:CE	2.44	0.48
1:A:485:SER:OG	1:A:490:GLU:HG3	2.13	0.48
1:B:224:ILE:HD11	1:B:226:ILE:HD11	1.95	0.48
1:B:332:ILE:CG2	1:B:383:MET:HB3	2.43	0.48
1:C:260:THR:HG23	1:C:415:GLN:HE22	1.78	0.48
1:C:591:LEU:HD13	1:C:649:LEU:HD23	1.95	0.48
1:A:686:TYR:HD2	1:A:689:GLU:CG	2.25	0.48
1:B:607:ARG:HG2	1:B:684:LYS:HG2	1.95	0.48

Continued on next page...

Continued from previous page...

Atom-1	Atom-2	Distance(Å)	Clash(Å)
1:A:581:GLU:HB3	1:A:699:ILE:HG23	1.95	0.48
1:A:424:PHE:CZ	1:A:428:ARG:HD2	2.49	0.48
1:A:332:ILE:CD1	1:A:384:ALA:HB2	2.44	0.48
1:B:266:GLU:HA	1:B:295:PHE:CG	2.49	0.48
1:C:184:CYS:O	1:C:188:ILE:HG13	2.14	0.48
1:C:613:PHE:CE1	1:C:650:ILE:HD11	2.49	0.48
1:A:689:GLU:O	1:A:691:GLU:N	2.44	0.47
1:C:158:PHE:CD2	1:C:158:PHE:C	2.88	0.47
1:B:728:LEU:CB	1:B:729:PRO:CD	2.89	0.47
1:C:424:PHE:CZ	1:C:428:ARG:HD2	2.49	0.47
1:C:544:GLN:O	1:C:548:GLU:HG3	2.14	0.47
1:A:287:LEU:HA	1:A:287:LEU:HD23	1.69	0.47
1:C:177:TRP:O	1:C:179:LEU:HG	2.14	0.47
1:A:683:TRP:HD1	1:A:688:ASP:HA	1.80	0.47
1:B:112:GLU:O	1:B:514:PRO:HD2	2.14	0.47
1:C:764:ASP:O	1:C:767:ARG:HB3	2.15	0.47
1:B:518:ASN:HD22	1:B:518:ASN:C	2.18	0.47
1:A:666:ARG:HG2	1:A:666:ARG:NH1	2.29	0.47
1:B:689:GLU:O	1:B:691:GLU:N	2.35	0.47
1:A:215:PRO:HG3	1:A:238:ILE:CD1	2.45	0.47
1:B:466:ILE:HG13	1:B:506:ILE:HD11	1.96	0.47
1:A:434:PHE:CE1	1:A:757:GLU:HA	2.49	0.47
1:B:488:ARG:HD2	1:B:488:ARG:HA	1.49	0.47
1:A:109:THR:OG1	1:A:110:ASP:N	2.47	0.47
1:B:332:ILE:HG23	1:B:387:LEU:HD12	1.95	0.47
1:A:332:ILE:HG23	1:A:387:LEU:HD12	1.97	0.47
1:B:252:GLU:HG3	1:B:253:ILE:N	2.29	0.47
1:C:255:HIS:C	1:C:256:LYS:HD2	2.36	0.47
1:A:575:GLU:H	1:A:575:GLU:CD	2.17	0.46
1:B:222:ARG:NH2	1:B:230:TYR:HB3	2.30	0.46
1:B:290:PRO:HG2	1:B:321:PRO:O	2.15	0.46
1:A:389:ARG:HG2	1:A:432:LEU:HD23	1.97	0.46
1:B:120:THR:CG2	1:B:320:VAL:H	2.24	0.46
1:C:651:GLY:O	1:C:655:GLN:HG3	2.15	0.46
1:B:110:ASP:HB3	1:B:325:PRO:HB3	1.97	0.46
1:C:368:CYS:HA	1:C:377:ASP:OD1	2.15	0.46
1:B:470:LEU:N	1:B:471:PRO:CD	2.78	0.46
1:A:584:VAL:HG11	1:A:702:MET:HG3	1.97	0.46
1:B:119:ASP:OD2	1:B:291:SER:HB3	2.15	0.46
1:B:584:VAL:HB	1:B:702:MET:HG3	1.97	0.46
1:B:234:VAL:O	1:B:237:ASP:HB3	2.16	0.46
1:B:546:TRP:CE2	1:B:587:LYS:HE2	2.51	0.46

Continued on next page...

Continued from previous page...

Atom-1	Atom-2	Distance(Å)	Clash(Å)
1:C:131:LYS:HD2	1:C:131:LYS:H	1.79	0.46
1:A:470:LEU:N	1:A:471:PRO:CD	2.79	0.46
1:A:488:ARG:HD3	1:A:574:PHE:CD2	2.50	0.46
1:C:215:PRO:CB	1:C:242:LYS:HD2	2.41	0.46
1:A:390:GLN:HG2	1:A:391:HIS:HD2	1.77	0.46
1:C:198:LEU:HB3	1:C:234:VAL:HG21	1.98	0.46
1:C:469:ASP:O	1:C:473:GLU:HG3	2.16	0.46
1:B:365:ASN:HD22	1:B:402:ASN:HD21	1.63	0.46
1:A:235:LEU:HA	1:A:235:LEU:HD23	1.68	0.45
1:A:714:THR:HG23	1:B:204:GLU:OE1	2.16	0.45
1:A:465:ILE:HD13	1:A:505:TRP:CE3	2.51	0.45
1:C:723:ILE:C	1:C:725:ARG:H	2.19	0.45
1:B:201:GLU:HG2	1:B:202:ASN:N	2.31	0.45
2:A:901:A3C:H11A	2:A:901:A3C:H01	1.64	0.45
1:C:409:PHE:CE2	1:C:443:ALA:HA	2.51	0.45
1:B:716:PHE:C	1:B:716:PHE:CD2	2.89	0.45
1:C:704:ASN:N	1:C:704:ASN:HD22	2.14	0.45
1:B:263:HIS:CE1	1:B:289:SER:HB2	2.52	0.45
1:B:546:TRP:CZ2	1:B:587:LYS:HG2	2.51	0.45
1:C:786:CYS:HB3	1:C:789:HIS:CE1	2.52	0.45
1:A:607:ARG:HG2	1:A:684:LYS:HD3	1.98	0.45
1:C:116:SER:O	1:C:120:THR:HG23	2.16	0.45
1:A:332:ILE:HD13	1:A:384:ALA:HB2	1.99	0.45
1:B:272:ASP:OD1	1:B:274:GLU:HB3	2.17	0.45
1:B:492:ARG:HD3	1:B:529:TYR:CZ	2.51	0.45
1:B:728:LEU:CB	1:B:729:PRO:HD2	2.31	0.45
1:A:488:ARG:HD2	1:A:488:ARG:HA	1.54	0.45
1:B:184:CYS:O	1:B:188:ILE:HG13	2.16	0.45
1:B:269:ARG:HH11	1:B:269:ARG:HG2	1.82	0.45
1:C:613:PHE:CD1	1:C:650:ILE:HD11	2.53	0.44
1:C:214:PHE:HB3	1:C:215:PRO:HD3	1.98	0.44
1:C:199:GLU:OE2	1:C:234:VAL:HA	2.17	0.44
1:C:98:VAL:O	1:C:102:LYS:HB2	2.17	0.44
1:A:368:CYS:HA	1:A:377:ASP:OD1	2.18	0.44
1:A:169:ALA:HB2	1:A:217:LEU:HD21	1.99	0.44
1:A:682:LYS:HD2	1:A:690:GLY:H	1.83	0.44
1:C:686:TYR:HB3	1:C:687:GLY:H	1.49	0.44
1:A:776:VAL:O	1:A:780[B]:PHE:HD2	2.01	0.44
1:A:492:ARG:HD3	1:A:529:TYR:CE2	2.52	0.44
1:C:287:LEU:HD23	1:C:287:LEU:HA	1.57	0.44
3:C:931:1PE:H241	3:C:931:1PE:H231	1.79	0.44
1:A:326:VAL:CG1	1:A:326:VAL:O	2.66	0.44

Continued on next page...

Continued from previous page...

Atom-1	Atom-2	Distance(Å)	Clash(Å)
1:B:285:SER:HB3	1:B:308:TYR:CD2	2.52	0.44
1:C:229:PRO:O	1:C:235:LEU:HD12	2.17	0.44
1:C:460:LEU:HD23	1:C:460:LEU:HA	1.74	0.44
1:C:434:PHE:HB3	1:C:435:PRO:HD2	2.00	0.44
1:B:168:LEU:CD2	1:B:218:LEU:HD13	2.48	0.44
1:C:506:ILE:HG12	1:C:510:LEU:CD2	2.48	0.44
1:B:158:PHE:C	1:B:158:PHE:CD2	2.91	0.44
1:C:748:MET:O	1:C:752:MET:N	2.51	0.44
1:C:121:ALA:HA	1:C:142:ILE:HD11	1.98	0.44
1:B:201:GLU:HG2	1:B:202:ASN:ND2	2.33	0.43
1:C:328:LEU:HD13	1:C:367:ILE:HD12	2.00	0.43
1:A:657:SER:HB3	1:A:672:LEU:CD1	2.47	0.43
1:A:228:VAL:HG22	1:A:229:PRO:HD2	2.00	0.43
1:C:460:LEU:HD22	1:C:474:ILE:HD12	1.99	0.43
1:B:206:MET:O	1:B:206:MET:HG3	2.18	0.43
1:B:661:PHE:HA	1:B:666:ARG:H	1.83	0.43
1:B:698:MET:CE	1:B:698:MET:HA	2.48	0.43
1:B:396:SER:O	1:B:399:VAL:HG23	2.18	0.43
1:A:249:ILE:HA	1:A:250:PRO:HD3	1.80	0.43
1:A:613:PHE:CE1	1:A:650:ILE:HD11	2.53	0.43
1:B:585:TRP:C	1:B:585:TRP:CD1	2.92	0.43
1:B:121:ALA:HA	1:B:142:ILE:HD11	2.00	0.43
1:B:215:PRO:CB	1:B:242:LYS:HD2	2.37	0.43
1:C:488:ARG:HD3	1:C:574:PHE:CD2	2.54	0.43
1:C:332:ILE:CG2	1:C:383:MET:HB3	2.49	0.43
1:B:245:LYS:O	1:B:249:ILE:HG12	2.18	0.43
1:C:710:PHE:CD1	1:C:766:PHE:HD2	2.37	0.43
1:C:470:LEU:N	1:C:471:PRO:CD	2.81	0.43
1:C:492:ARG:HD3	1:C:529:TYR:CZ	2.54	0.43
1:B:277:LEU:HD23	1:B:286:PHE:HZ	1.84	0.43
1:A:440:LEU:HD23	1:A:440:LEU:HA	1.83	0.43
1:C:613:PHE:O	1:C:617:ILE:HG13	2.18	0.43
3:B:911:1PE:H252	3:B:911:1PE:H262	1.61	0.43
1:C:540:TRP:O	1:C:544:GLN:HG3	2.19	0.43
1:B:262:LEU:HD11	1:B:279:LEU:HB3	2.00	0.43
1:C:440:LEU:HA	1:C:440:LEU:HD23	1.83	0.43
1:C:786:CYS:O	1:C:788:ASP:N	2.51	0.42
1:A:742:GLU:HG2	1:A:743:LYS:N	2.33	0.42
1:B:339:GLN:NE2	1:B:391:HIS:NE2	2.63	0.42
1:A:612:GLN:HG3	1:A:642:ALA:HB3	1.99	0.42
2:A:901:A3C:H12	2:A:901:A3C:H02	1.79	0.42
1:A:483:TYR:CZ	3:A:911:1PE:H162	2.55	0.42

Continued on next page...

Continued from previous page...

Atom-1	Atom-2	Distance(Å)	Clash(Å)
1:B:198:LEU:HD13	1:B:198:LEU:C	2.40	0.42
1:A:704:ASN:HD22	1:A:704:ASN:N	2.17	0.42
1:A:339:GLN:HA	1:A:344:SER:HB3	2.02	0.42
1:B:601:GLU:HG2	1:B:602:SER:N	2.35	0.42
1:A:224:ILE:HG13	1:A:226:ILE:HG13	2.01	0.42
1:C:573:ILE:O	1:C:582:ARG:HD3	2.20	0.42
1:C:228:VAL:HG13	1:C:229:PRO:HD2	2.01	0.42
1:B:105:LEU:CD2	1:B:334:ILE:HG21	2.50	0.42
1:A:584:VAL:HG22	1:A:698:MET:HB3	2.02	0.42
1:C:116:SER:O	1:C:120:THR:CG2	2.67	0.42
1:B:105:LEU:HD21	1:B:334:ILE:CG2	2.49	0.42
1:A:231:ASP:O	1:A:232:SER:C	2.58	0.42
1:B:215:PRO:HG2	1:B:242:LYS:HB2	2.02	0.42
1:C:210:PHE:C	1:C:210:PHE:CD2	2.93	0.42
1:A:572:THR:HG21	1:A:775:ASP:HB3	2.01	0.42
1:B:112:GLU:OE2	1:B:112:GLU:HA	2.20	0.41
1:A:742:GLU:OE1	1:A:742:GLU:N	2.53	0.41
1:B:738:ASN:O	1:B:741:LYS:HB3	2.19	0.41
1:C:123:VAL:HG22	1:C:309:LEU:HD22	2.02	0.41
1:C:595:ILE:HG12	1:C:645:LEU:HD11	2.02	0.41
1:C:257:ILE:N	1:C:257:ILE:HD13	2.35	0.41
1:A:244:LEU:C	1:A:244:LEU:HD23	2.40	0.41
1:A:238:ILE:HD12	1:A:239:TYR:N	2.35	0.41
1:C:589:SER:HA	1:C:695:MET:CE	2.51	0.41
1:C:694:LEU:O	1:C:698:MET:HG2	2.20	0.41
1:A:127:ASP:OD1	1:A:131:LYS:HD3	2.19	0.41
1:A:674:LEU:HD13	1:B:457:ARG:HG3	2.02	0.41
1:C:326:VAL:CG1	1:C:326:VAL:O	2.68	0.41
1:B:340:ARG:HD2	1:B:428:ARG:NH2	2.35	0.41
1:B:612:GLN:O	1:B:616:TYR:HB2	2.20	0.41
1:C:655:GLN:O	1:C:659:ASP:HB2	2.20	0.41
1:A:694:LEU:O	1:A:698:MET:HG2	2.21	0.41
1:C:252:GLU:OE1	1:C:252:GLU:HA	2.21	0.41
1:A:748:MET:CE	1:A:780[A]:PHE:HE1	2.33	0.41
1:A:547:TYR:HA	1:A:552:LEU:HD12	2.02	0.41
1:A:130:ASP:OD1	1:A:130:ASP:N	2.54	0.41
1:C:660:LEU:O	1:C:660:LEU:HG	2.20	0.41
1:C:202:ASN:OD1	1:C:204:GLU:HB2	2.21	0.41
1:C:190:PHE:CD2	1:C:190:PHE:C	2.94	0.41
1:B:269:ARG:NH1	1:B:269:ARG:HG2	2.35	0.41
1:C:386:ARG:NH2	1:C:428:ARG:NH2	2.69	0.41
1:B:581:GLU:O	1:B:584:VAL:HG12	2.21	0.41

Continued on next page...

Continued from previous page...

Atom-1	Atom-2	Distance(Å)	Clash(Å)
1:B:249:ILE:HA	1:B:250:PRO:HD3	1.87	0.41
1:A:573:ILE:O	1:A:582:ARG:HD3	2.20	0.41
1:A:332:ILE:HG21	1:A:383:MET:HB3	2.02	0.41
1:B:188:ILE:O	1:B:192:ARG:HB2	2.21	0.41
1:B:362:TRP:CZ2	1:B:399:VAL:HG21	2.56	0.41
1:C:294:ALA:HA	1:C:309:LEU:HD11	2.01	0.41
1:B:774:LEU:HA	1:B:774:LEU:HD23	1.83	0.41
1:A:488:ARG:HD3	1:A:574:PHE:CG	2.56	0.41
1:C:444:LYS:NZ	3:C:911:1PE:H122	2.35	0.40
1:A:123:VAL:HG13	1:A:135:PHE:CD2	2.57	0.40
1:B:591:LEU:O	1:B:595:ILE:HG13	2.21	0.40
1:A:772:THR:O	1:A:776:VAL:HG23	2.21	0.40
1:C:601:GLU:HG2	1:C:605:SER:OG	2.21	0.40
1:B:248:ARG:HD2	1:B:248:ARG:HA	1.95	0.40
1:A:161:HIS:CD2	1:A:198:LEU:HD21	2.56	0.40
1:A:678:ASP:OD2	1:B:457:ARG:NH2	2.55	0.40
1:B:758:LEU:HA	1:B:758:LEU:HD23	1.87	0.40
1:B:175:ARG:HD3	1:B:175:ARG:O	2.22	0.40
1:B:115:ILE:CD1	1:B:316:PHE:HB3	2.51	0.40
1:A:368:CYS:HB3	1:A:376:GLN:HA	2.03	0.40
1:A:231:ASP:O	1:A:232:SER:O	2.40	0.40
1:C:581:GLU:OE2	1:C:703:LYS:HG2	2.22	0.40
1:C:649:LEU:O	1:C:653:LEU:HG	2.21	0.40
1:C:645:LEU:HD22	1:C:645:LEU:O	2.22	0.40
1:B:94:PHE:CE2	1:B:524:LEU:CD2	3.05	0.40
1:C:262:LEU:HD11	1:C:279:LEU:HB3	2.04	0.40
1:C:758:LEU:O	1:C:762:GLU:HG2	2.21	0.40

There are no symmetry-related clashes.

5.3 Torsion angles

5.3.1 Protein backbone ⓘ

In the following table, the Percentiles column shows the percent Ramachandran outliers of the chain as a percentile score with respect to all X-ray entries followed by that with respect to entries of similar resolution. The Analysed column shows the number of residues for which the backbone conformation was analysed, and the total number of residues.

Mol	Chain	Analysed	Favoured	Allowed	Outliers	Percentiles
1	A	683/727 (94%)	651 (95%)	29 (4%)	3 (0%)	43 79

Continued on next page...

Continued from previous page...

Mol	Chain	Analysed	Favoured	Allowed	Outliers	Percentiles
1	B	684/727 (94%)	628 (92%)	50 (7%)	6 (1%)	25 60
1	C	679/727 (93%)	615 (91%)	52 (8%)	12 (2%)	13 36
All	All	2046/2181 (94%)	1894 (93%)	131 (6%)	21 (1%)	22 56

All (21) Ramachandran outliers are listed below:

Mol	Chain	Res	Type
1	A	232	SER
1	B	601	GLU
1	C	91	SER
1	C	763	SER
1	A	690	GLY
1	B	229	PRO
1	B	690	GLY
1	B	728	LEU
1	C	194	ASN
1	C	326	VAL
1	C	229	PRO
1	C	787	GLY
1	C	197	LYS
1	C	399	VAL
1	B	207	PRO
1	B	711	PHE
1	C	232	SER
1	C	266	GLU
1	C	688	ASP
1	C	250	PRO
1	A	487	PRO

5.3.2 Protein sidechains ⓘ

In the following table, the Percentiles column shows the percent sidechain outliers of the chain as a percentile score with respect to all X-ray entries followed by that with respect to entries of similar resolution. The Analysed column shows the number of residues for which the sidechain conformation was analysed, and the total number of residues.

Mol	Chain	Analysed	Rotameric	Outliers	Percentiles
1	A	608/644 (94%)	555 (91%)	53 (9%)	15 37
1	B	609/644 (95%)	565 (93%)	44 (7%)	21 47
1	C	604/644 (94%)	569 (94%)	35 (6%)	28 60

Continued on next page...

Continued from previous page...

Mol	Chain	Analysed	Rotameric	Outliers	Percentiles	
All	All	1821/1932 (94%)	1689 (93%)	132 (7%)	20	47

All (132) residues with a non-rotameric sidechain are listed below:

Mol	Chain	Res	Type
1	A	120	THR
1	A	131	LYS
1	A	157	LEU
1	A	183	GLN
1	A	193	GLU
1	A	197	LYS
1	A	198	LEU
1	A	200	ASP
1	A	202	ASN
1	A	204	GLU
1	A	218	LEU
1	A	228	VAL
1	A	264	SER
1	A	268	MET
1	A	278	LYS
1	A	287	LEU
1	A	322	ASN
1	A	326	VAL
1	A	344	SER
1	A	353	GLU
1	A	368	CYS
1	A	390	GLN
1	A	394	GLN
1	A	398	ASP
1	A	399	VAL
1	A	404	GLU
1	A	438	GLU
1	A	452	LEU
1	A	461	ILE
1	A	479	GLU
1	A	488	ARG
1	A	518	ASN
1	A	524	LEU
1	A	541	ASP
1	A	558	ARG
1	A	604	ASP
1	A	615	GLU

Continued on next page...

Continued from previous page...

Mol	Chain	Res	Type
1	A	616	TYR
1	A	645	LEU
1	A	649	LEU
1	A	686	TYR
1	A	691	GLU
1	A	709	ASN
1	A	712	THR
1	A	728	LEU
1	A	744	THR
1	A	751	GLU
1	A	752	MET
1	A	755	MET
1	A	758	LEU
1	A	764	ASP
1	A	768	ASP
1	A	791	GLN
1	B	112	GLU
1	B	120	THR
1	B	131	LYS
1	B	137	SER
1	B	157	LEU
1	B	183	GLN
1	B	218	LEU
1	B	243	GLU
1	B	248	ARG
1	B	252	GLU
1	B	257	ILE
1	B	260	THR
1	B	270	ASP
1	B	287	LEU
1	B	292	SER
1	B	303	SER
1	B	322	ASN
1	B	326	VAL
1	B	390	GLN
1	B	423	MET
1	B	465	ILE
1	B	479	GLU
1	B	488	ARG
1	B	490	GLU
1	B	518	ASN
1	B	524	LEU

Continued on next page...

Continued from previous page...

Mol	Chain	Res	Type
1	B	553	SER
1	B	560	SER
1	B	639	SER
1	B	645	LEU
1	B	649	LEU
1	B	671	LEU
1	B	674	LEU
1	B	685	LEU
1	B	708	THR
1	B	713	HIS
1	B	718	ARG
1	B	723	ILE
1	B	738	ASN
1	B	746	LYS
1	B	752	MET
1	B	762	GLU
1	B	789	HIS
1	B	792	THR
1	C	99	LYS
1	C	120	THR
1	C	163	ARG
1	C	178	ASN
1	C	183	GLN
1	C	198	LEU
1	C	234	VAL
1	C	247	THR
1	C	256	LYS
1	C	257	ILE
1	C	269	ARG
1	C	274	GLU
1	C	287	LEU
1	C	322	ASN
1	C	326	VAL
1	C	390	GLN
1	C	402	ASN
1	C	436	ARG
1	C	461	ILE
1	C	465	ILE
1	C	488	ARG
1	C	490	GLU
1	C	538	LEU
1	C	558	ARG

Continued on next page...

Continued from previous page...

Mol	Chain	Res	Type
1	C	577	GLU
1	C	596	SER
1	C	669	ASN
1	C	671	LEU
1	C	672	LEU
1	C	743	LYS
1	C	758	LEU
1	C	765	THR
1	C	767	ARG
1	C	768	ASP
1	C	791	GLN

Some sidechains can be flipped to improve hydrogen bonding and reduce clashes. All (44) such sidechains are listed below:

Mol	Chain	Res	Type
1	A	145	ASN
1	A	202	ASN
1	A	322	ASN
1	A	339	GLN
1	A	391	HIS
1	A	394	GLN
1	A	431	GLN
1	A	502	ASN
1	A	518	ASN
1	A	535	GLN
1	A	655	GLN
1	A	664	HIS
1	A	669	ASN
1	A	704	ASN
1	A	713	HIS
1	B	282	GLN
1	B	365	ASN
1	B	390	GLN
1	B	415	GLN
1	B	431	GLN
1	B	449	ASN
1	B	518	ASN
1	B	527	GLN
1	B	535	GLN
1	B	544	GLN
1	B	580	HIS
1	B	655	GLN

Continued on next page...

Continued from previous page...

Mol	Chain	Res	Type
1	B	664	HIS
1	B	791	GLN
1	C	183	GLN
1	C	299	GLN
1	C	322	ASN
1	C	390	GLN
1	C	402	ASN
1	C	415	GLN
1	C	431	GLN
1	C	518	ASN
1	C	612	GLN
1	C	614	HIS
1	C	655	GLN
1	C	669	ASN
1	C	704	ASN
1	C	789	HIS
1	C	791	GLN

5.3.3 RNA ⓘ

There are no RNA chains in this entry.

5.4 Non-standard residues in protein, DNA, RNA chains ⓘ

There are no non-standard protein/DNA/RNA residues in this entry.

5.5 Carbohydrates ⓘ

There are no carbohydrates in this entry.

5.6 Ligand geometry ⓘ

10 ligands are modelled in this entry.

In the following table, the Counts columns list the number of bonds (or angles) for which Mogul statistics could be retrieved, the number of bonds (or angles) that are observed in the model and the number of bonds (or angles) that are defined in the chemical component dictionary. The Link column lists molecule types, if any, to which the group is linked. The Z score for a bond length (or angle) is the number of standard deviations the observed value is removed from the expected value. A bond length (or angle) with $|Z| > 2$ is considered an outlier worth inspection. RMSZ is the root-mean-square of all Z scores of the bond lengths (or angles).

Mol	Type	Chain	Res	Link	Bond lengths			Bond angles		
					Counts	RMSZ	# Z > 2	Counts	RMSZ	# Z > 2
3	1PE	A	811	-	15,15,15	0.54	0	14,14,14	0.77	0
2	A3C	A	901	-	30,30,30	0.92	0	47,47,47	2.71	12 (25%)
3	1PE	A	911	-	15,15,15	0.57	0	14,14,14	0.76	0
3	1PE	A	921	-	15,15,15	0.57	0	14,14,14	0.77	0
3	1PE	A	931	-	15,15,15	0.62	0	14,14,14	0.61	0
3	1PE	B	911	-	15,15,15	0.56	0	14,14,14	0.80	0
3	1PE	B	921	-	15,15,15	0.57	0	14,14,14	0.74	0
3	1PE	B	931	-	15,15,15	0.61	0	14,14,14	0.69	0
3	1PE	C	911	-	15,15,15	0.58	0	14,14,14	0.74	0
3	1PE	C	931	-	15,15,15	0.55	0	14,14,14	0.81	0

In the following table, the Chirals column lists the number of chiral outliers, the number of chiral centers analysed, the number of these observed in the model and the number defined in the chemical component dictionary. Similar counts are reported in the Torsion and Rings columns. '-' means no outliers of that kind were identified.

Mol	Type	Chain	Res	Link	Chirals	Torsions	Rings
3	1PE	A	811	-	-	0/13/13/13	0/0/0/0
2	A3C	A	901	-	-	0/18/53/53	0/0/2/2
3	1PE	A	911	-	-	0/13/13/13	0/0/0/0
3	1PE	A	921	-	-	0/13/13/13	0/0/0/0
3	1PE	A	931	-	-	0/13/13/13	0/0/0/0
3	1PE	B	911	-	-	0/13/13/13	0/0/0/0
3	1PE	B	921	-	-	0/13/13/13	0/0/0/0
3	1PE	B	931	-	-	0/13/13/13	0/0/0/0
3	1PE	C	911	-	-	0/13/13/13	0/0/0/0
3	1PE	C	931	-	-	0/13/13/13	0/0/0/0

There are no bond length outliers.

All (12) bond angle outliers are listed below:

Mol	Chain	Res	Type	Atoms	Z	Observed(°)	Ideal(°)
2	A	901	A3C	C21-C22-C31	9.25	139.63	124.19
2	A	901	A3C	C23-C22-C21	-7.05	104.85	113.61
2	A	901	A3C	C12-C11-N03	-5.58	105.28	114.67
2	A	901	A3C	P02-O03-P04	-5.44	115.72	131.68
2	A	901	A3C	C23-C22-C31	-5.35	115.48	122.31
2	A	901	A3C	C24-C23-C22	4.77	119.03	111.02
2	A	901	A3C	C34-C30-C25	4.61	121.78	112.92
2	A	901	A3C	C34-C30-C29	-3.56	102.13	108.17
2	A	901	A3C	C30-C21-C22	2.95	112.93	109.82
2	A	901	A3C	C23-C24-C25	2.78	115.63	110.84

Continued on next page...

Continued from previous page...

Mol	Chain	Res	Type	Atoms	Z	Observed(°)	Ideal(°)
2	A	901	A3C	C29-C30-C25	2.77	111.80	108.08
2	A	901	A3C	C28-C29-C30	-2.74	109.54	113.21

There are no chirality outliers.

There are no torsion outliers.

There are no ring outliers.

5.7 Other polymers ⓘ

There are no such residues in this entry.

5.8 Polymer linkage issues

There are no chain breaks in this entry.

6 Fit of model and data ⓘ

6.1 Protein, DNA and RNA chains ⓘ

In the following table, the column labelled ‘#RSRZ> 2’ contains the number (and percentage) of RSRZ outliers, followed by percent RSRZ outliers for the chain as percentile scores relative to all X-ray entries and entries of similar resolution. The OWAB column contains the minimum, median, 95th percentile and maximum values of the occupancy-weighted average B-factor per residue. The column labelled ‘Q< 0.9’ lists the number of (and percentage) of residues with an average occupancy less than 0.9.

Mol	Chain	Analysed	<RSRZ>	#RSRZ>2	OWAB(Å ²)	Q<0.9
1	A	685/727 (94%)	-0.18	5 (0%) 84 87	26, 46, 94, 133	0
1	B	689/727 (94%)	-0.14	8 (1%) 75 78	28, 55, 100, 177	0
1	C	685/727 (94%)	-0.02	21 (3%) 47 50	30, 57, 106, 173	0
All	All	2059/2181 (94%)	-0.11	34 (1%) 67 70	26, 53, 101, 177	0

All (34) RSRZ outliers are listed below:

Mol	Chain	Res	Type	RSRZ
1	C	228	VAL	5.9
1	B	199	GLU	5.5
1	C	229	PRO	4.9
1	B	686	TYR	3.8
1	C	686	TYR	3.7
1	A	686	TYR	3.5
1	B	200	ASP	3.5
1	A	620	ALA	3.4
1	B	764	ASP	3.2
1	B	688	ASP	3.0
1	C	230	TYR	3.0
1	C	456	GLU	2.9
1	B	231	ASP	2.9
1	C	221	ALA	2.8
1	C	222	ARG	2.8
1	B	236	LYS	2.7
1	C	226	ILE	2.7
1	C	224	ILE	2.6
1	C	688	ASP	2.5
1	A	603	SER	2.5
1	C	604	ASP	2.5
1	A	690	GLY	2.3
1	C	200	ASP	2.3

Continued on next page...

Continued from previous page...

Mol	Chain	Res	Type	RSRZ
1	C	193	GLU	2.2
1	B	203	ASP	2.2
1	C	218	LEU	2.2
1	C	607	ARG	2.2
1	C	455	ARG	2.1
1	A	688	ASP	2.1
1	C	96	GLU	2.1
1	C	188	ILE	2.1
1	C	227	ASP	2.1
1	C	638	GLY	2.1
1	C	225	ASN	2.1

6.2 Non-standard residues in protein, DNA, RNA chains ⓘ

There are no non-standard protein/DNA/RNA residues in this entry.

6.3 Carbohydrates ⓘ

There are no carbohydrates in this entry.

6.4 Ligands ⓘ

In the following table, the Atoms column lists the number of modelled atoms in the group and the number defined in the chemical component dictionary. LLDF column lists the quality of electron density of the group with respect to its neighbouring residues in protein, DNA or RNA chains. The B-factors column lists the minimum, median, 95th percentile and maximum values of B factors of atoms in the group. The column labelled 'Q< 0.9' lists the number of atoms with occupancy less than 0.9.

Mol	Type	Chain	Res	Atoms	RSR	LLDF	B-factors(Å ²)	Q<0.9
3	1PE	A	931	16/16	0.46	16.69	61,78,96,98	0
3	1PE	B	931	16/16	0.27	6.61	55,77,98,102	0
3	1PE	B	921	16/16	0.21	2.92	54,69,89,97	0
3	1PE	A	921	16/16	0.22	2.74	42,58,77,92	0
3	1PE	C	911	16/16	0.25	2.65	54,79,93,95	0
3	1PE	C	931	16/16	0.21	1.94	61,80,95,97	0
3	1PE	B	911	16/16	0.20	1.25	61,72,95,96	0
3	1PE	A	811	16/16	0.25	1.00	41,60,79,87	0
3	1PE	A	911	16/16	0.26	0.85	60,72,90,90	0
2	A3C	A	901	29/29	0.13	-0.09	39,52,112,143	0

6.5 Other polymers ⓘ

There are no such residues in this entry.