



Full wwPDB X-ray Structure Validation Report

Feb 28, 2014 – 12:33 AM GMT

PDB ID : 3PYY
Title : Discovery and Characterization of a Cell-Permeable, Small-molecule c-Abl Kinase Activator that Binds to the Myristoyl Binding Site
Authors : Yang, J.; Campobasso, N.; Biju, M.P.; Fisher, K.; Pan, X.Q.; Cottom, J.; Galbraith, S.; Ho, T.; Zhang, H.; Hong, X.; Ward, P.; Hofmann, G.; Siegfried, B.
Deposited on : 2010-12-13
Resolution : 1.85 Å(reported)

This is a full wwPDB validation report for a publicly released PDB entry.
We welcome your comments at validation@mail.wwpdb.org
A user guide is available at <http://wwpdb.org/ValidationPDFNotes.html>

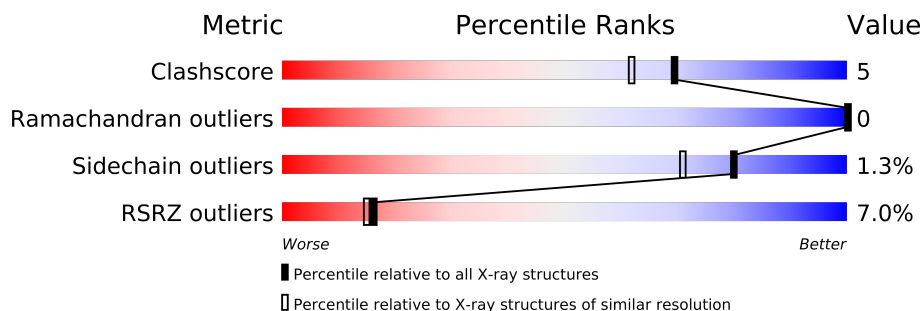
The following versions of software and data (see [references](#)) were used in the production of this report:

MolProbity : 4.02b-467
Mogul : 1.15 2013
Xtriage (Phenix) : dev-1323
EDS : stable22639
Percentile statistics : 21963
Refmac : 5.8.0049
CCP4 : 6.3.0 (Settle)
Ideal geometry (proteins) : Engh & Huber (2001)
Ideal geometry (DNA, RNA) : Parkinson et. al. (1996)
Validation Pipeline (wwPDB-VP) : stable22683

1 Overall quality at a glance

The reported resolution of this entry is 1.85 Å.

Percentile scores (ranging between 0-100) for global validation metrics of the entry are shown in the following graphic. The table shows the number of entries on which the scores are based.



Metric	Whole archive (#Entries)	Similar resolution (#Entries, resolution range(Å))
Clashscore	79885	1470 (1.86-1.86)
Ramachandran outliers	78287	1451 (1.86-1.86)
Sidechain outliers	78261	1451 (1.86-1.86)
RSRZ outliers	66119	1269 (1.86-1.86)

The table below summarises the geometric issues observed across the polymeric chains and their fit to the electron density. The red, orange, yellow and green segments on the lower bar indicate the fraction of residues that contain outliers for ≥ 3 , 2, 1 and 0 types of geometric quality criteria. The upper red bar (where present) indicates the fraction of residues that have poor fit to the electron density.

Mol	Chain	Length	Quality of chain
1	A	298	
1	B	298	

The following table lists non-polymeric compounds that are outliers for geometric or electron-density-fit criteria:

Mol	Type	Chain	Res	Geometry	Electron density
2	SO4	A	5	-	X
2	SO4	B	3	-	X
5	2PE	B	170	-	X
6	GOL	B	60	-	X

2 Entry composition

There are 7 unique types of molecules in this entry. The entry contains 4625 atoms, of which 0 are hydrogen and 0 are deuterium.

In the tables below, the ZeroOcc column contains the number of atoms modelled with zero occupancy, the AltConf column contains the number of residues with at least one atom in alternate conformation and the Trace column contains the number of residues modelled with at most 2 atoms.

- Molecule 1 is a protein called V-abl Abelson murine leukemia viral oncogene homolog 1 isoform b variant.

Mol	Chain	Residues	Atoms					ZeroOcc	AltConf	Trace
1	A	265	Total	C	N	O	S	0	1	0
			2141	1385	346	394	16			
1	B	257	Total	C	N	O	S	0	1	0
			2096	1356	339	386	15			

There are 28 discrepancies between the modelled and reference sequences:

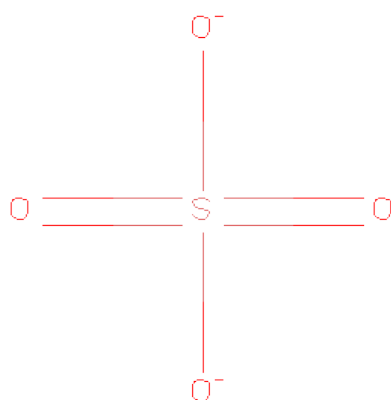
Chain	Residue	Modelled	Actual	Comment	Reference
A	234	MET	-	EXPRESSION TAG	UNP Q59FK4
A	235	HIS	-	EXPRESSION TAG	UNP Q59FK4
A	236	HIS	-	EXPRESSION TAG	UNP Q59FK4
A	237	HIS	-	EXPRESSION TAG	UNP Q59FK4
A	238	HIS	-	EXPRESSION TAG	UNP Q59FK4
A	239	HIS	-	EXPRESSION TAG	UNP Q59FK4
A	240	HIS	-	EXPRESSION TAG	UNP Q59FK4
A	241	GLU	-	EXPRESSION TAG	UNP Q59FK4
A	242	ASN	-	EXPRESSION TAG	UNP Q59FK4
A	243	LEU	-	EXPRESSION TAG	UNP Q59FK4
A	244	TYR	-	EXPRESSION TAG	UNP Q59FK4
A	245	PHE	-	EXPRESSION TAG	UNP Q59FK4
A	246	GLN	-	EXPRESSION TAG	UNP Q59FK4
A	247	GLY	-	EXPRESSION TAG	UNP Q59FK4
B	234	MET	-	EXPRESSION TAG	UNP Q59FK4
B	235	HIS	-	EXPRESSION TAG	UNP Q59FK4
B	236	HIS	-	EXPRESSION TAG	UNP Q59FK4
B	237	HIS	-	EXPRESSION TAG	UNP Q59FK4
B	238	HIS	-	EXPRESSION TAG	UNP Q59FK4
B	239	HIS	-	EXPRESSION TAG	UNP Q59FK4
B	240	HIS	-	EXPRESSION TAG	UNP Q59FK4
B	241	GLU	-	EXPRESSION TAG	UNP Q59FK4
B	242	ASN	-	EXPRESSION TAG	UNP Q59FK4
B	243	LEU	-	EXPRESSION TAG	UNP Q59FK4

Continued on next page...

Continued from previous page...

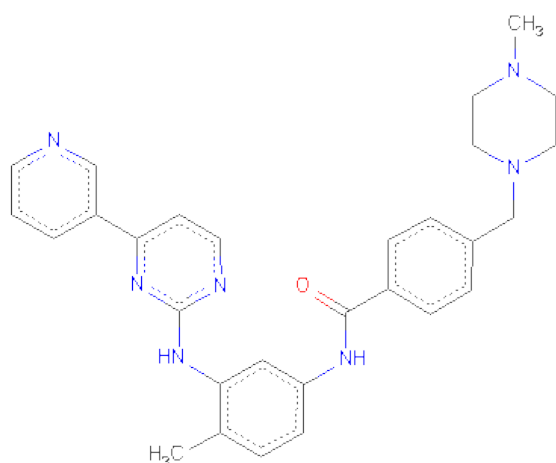
Chain	Residue	Modelled	Actual	Comment	Reference
B	244	TYR	-	EXPRESSION TAG	UNP Q59FK4
B	245	PHE	-	EXPRESSION TAG	UNP Q59FK4
B	246	GLN	-	EXPRESSION TAG	UNP Q59FK4
B	247	GLY	-	EXPRESSION TAG	UNP Q59FK4

- Molecule 2 is SULFATE ION (three-letter code: SO₄) (formula: O₄S).



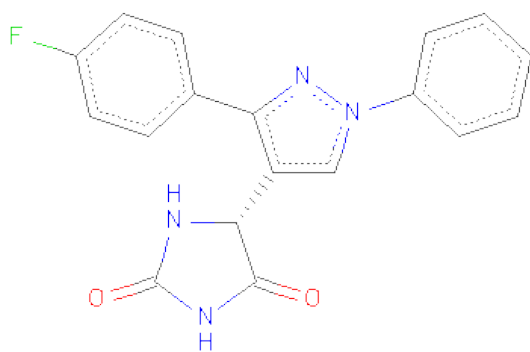
Mol	Chain	Residues	Atoms			ZeroOcc	AltConf
2	A	1	Total	O	S	0	0
			5	4	1		
2	A	1	Total	O	S	0	0
			5	4	1		
2	B	1	Total	O	S	0	0
			5	4	1		

- Molecule 3 is 4-(4-METHYL-PIPERAZIN-1-YLMETHYL)-N-[4-METHYL-3-(4-PYRIDIN-3-YL-PYRIMIDIN-2-YLAMINO)-PHENYL]-BENZAMIDE (three-letter code: STI) (formula: C₂₉H₃₁N₇O).



Mol	Chain	Residues	Atoms				ZeroOcc	AltConf
3	A	1	Total	C	N	O	0	0
			37	29	7	1		
3	B	1	Total	C	N	O	0	0
			37	29	7	1		

- Molecule 4 is (5R)-5-[3-(4-FLUOROPHENYL)-1-PHENYL-1H-PYRAZOL-4-YL]IMIDAZOLIDINE-2,4-DIONE (three-letter code: 3YY) (formula: C₁₈H₁₃FN₄O₂).



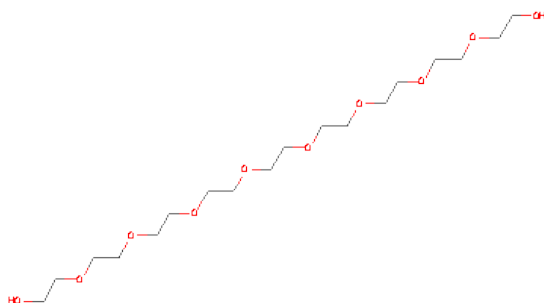
Mol	Chain	Residues	Atoms					ZeroOcc	AltConf
4	A	1	Total	C	F	N	O	0	0
			25	18	1	4	2		

Continued on next page...

Continued from previous page...

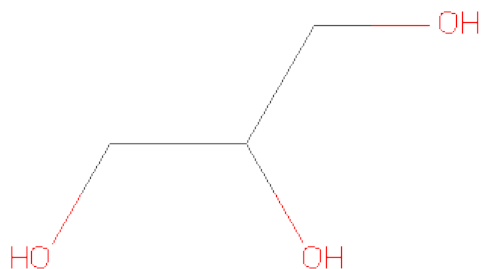
Mol	Chain	Residues	Atoms					ZeroOcc	AltConf
			Total	C	F	N	O		
4	B	1	25	18	1	4	2	0	0

- Molecule 5 is NONAETHYLENE GLYCOL (three-letter code: 2PE) (formula: $C_{18}H_{38}O_{10}$).



Mol	Chain	Residues	Atoms			ZeroOcc	AltConf
			Total	C	O		
5	B	1	28	18	10	0	0

- Molecule 6 is GLYCEROL (three-letter code: GOL) (formula: $C_3H_8O_3$).



Mol	Chain	Residues	Atoms			ZeroOcc	AltConf
6	B	1	Total	C	O	0	0
			6	3	3		

- Molecule 7 is water.

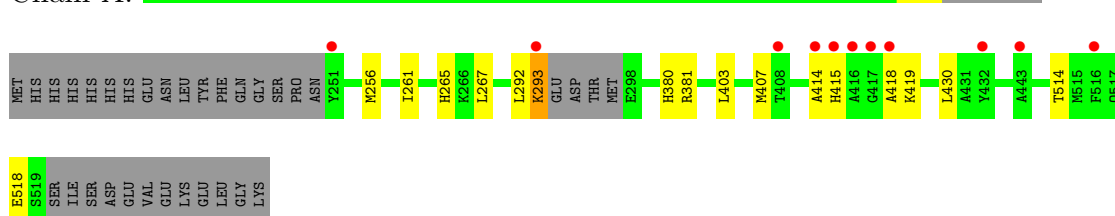
Mol	Chain	Residues	Atoms		ZeroOcc	AltConf
7	A	119	Total	O	0	0
			119	119		
7	B	96	Total	O	0	0
			96	96		

3 Residue-property plots

These plots are drawn for all protein, RNA and DNA chains in the entry. The first graphic for a chain summarises the proportions of errors displayed in the second graphic. The second graphic shows the sequence view annotated by issues in geometry and electron density. Residues are color-coded according to the number of geometric quality criteria for which they contain at least one outlier: green = 0, yellow = 1, orange = 2 and red = 3 or more. A red dot above a residue indicates a poor fit to the electron density ($RSRZ > 2$). Stretches of 2 or more consecutive residues without any outlier are shown as a green connector. Residues present in the sample, but not in the model, are shown in grey.

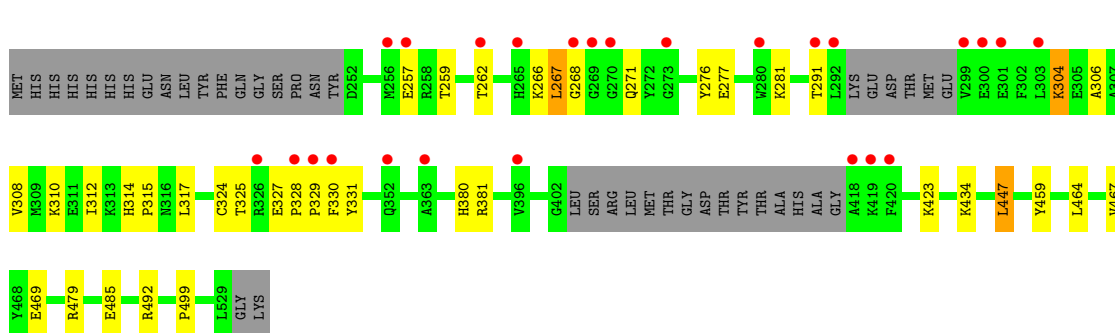
- Molecule 1: V-abl Abelson murine leukemia viral oncogene homolog 1 isoform b variant

Chain A:



- Molecule 1: V-abl Abelson murine leukemia viral oncogene homolog 1 isoform b variant

Chain B:



4 Data and refinement statistics

Property	Value	Source
Space group	P 21 21 21	Depositor
Cell constants a, b, c, α , β , γ	74.39Å 95.43Å 115.50Å 90.00° 90.00° 90.00°	Depositor
Resolution (Å)	29.96 – 1.85 29.96 – 1.85	Depositor EDS
% Data completeness (in resolution range)	94.9 (29.96-1.85) 94.9 (29.96-1.85)	Depositor EDS
R_{merge}	(Not available)	Depositor
R_{sym}	(Not available)	Depositor
$\langle I/\sigma(I) \rangle$ ¹	3.30 (at 1.85Å)	Xtriage
Refinement program	PHENIX (phenix.refine: 1.6.289)	Depositor
R, R_{free}	0.189 , 0.204 0.185 , (Not available)	Depositor DCC
R_{free} test set	No test flags present.	DCC
Wilson B-factor (Å ²)	26.4	Xtriage
Anisotropy	0.309	Xtriage
Bulk solvent k_{sol} (e/Å ³), B_{sol} (Å ²)	0.38 , 43.8	EDS
Estimated twinning fraction	No twinning to report.	Xtriage
L-test for twinning	$\langle L \rangle = 0.49$, $\langle L^2 \rangle = 0.32$	Xtriage
Outliers	0 of 69820 reflections	Xtriage
F_o, F_c correlation	0.96	EDS
Total number of atoms	4625	wwPDB-VP
Average B, all atoms (Å ²)	33.0	wwPDB-VP

Xtriage's analysis on translational NCS is as follows: *The largest off-origin peak in the Patterson function is 4.62% of the height of the origin peak. No significant pseudotranslation is detected.*

¹Intensities estimated from amplitudes.

5 Model quality

5.1 Standard geometry

Bond lengths and bond angles in the following residue types are not validated in this section: GOL, 3YY, 2PE, STI, SO4

The Z score for a bond length (or angle) is the number of standard deviations the observed value is removed from the expected value. A bond length (or angle) with $|Z| > 5$ is considered an outlier worth inspection. RMSZ is the root-mean-square of all Z scores of the bond lengths (or angles).

Mol	Chain	Bond lengths		Bond angles	
		RMSZ	$\# Z > 5$	RMSZ	$\# Z > 5$
1	A	0.36	0/2199	0.52	0/2977
1	B	0.35	0/2151	0.48	0/2910
All	All	0.36	0/4350	0.50	0/5887

There are no bond length outliers.

There are no bond angle outliers.

There are no chirality outliers.

There are no planarity outliers.

5.2 Close contacts

In the following table, the Non-H and H(model) columns list the number of non-hydrogen atoms and hydrogen atoms in the chain respectively. The H(added) column lists the number of hydrogens added by MolProbity. The Clashes column lists the number of clashes within the asymmetric unit, and the number in parentheses is this value normalized per 1000 atoms of the molecule in the chain. The Symm-Clashes column gives symmetry related clashes, in the same way as for the Clashes column.

Mol	Chain	Non-H	H(model)	H(added)	Clashes	Symm-Clashes
1	A	2141	0	2081	8	0
1	B	2096	0	2050	29	0
2	A	10	0	0	0	0
2	B	5	0	0	0	0
3	A	37	0	31	1	0
3	B	37	0	31	1	0
4	A	25	0	13	0	0
4	B	25	0	13	0	0
5	B	28	0	38	5	0
6	B	6	0	8	1	0

Continued on next page...

Continued from previous page...

Mol	Chain	Non-H	H(model)	H(added)	Clashes	Symm-Clashes
7	A	119	0	0	0	0
7	B	96	0	0	1	0
All	All	4625	0	4265	41	0

Clashscore is defined as the number of clashes calculated for the entry per 1000 atoms (including hydrogens) of the entry. The overall clashscore for this entry is 5.

All (41) close contacts within the same asymmetric unit are listed below.

Atom-1	Atom-2	Distance(Å)	Clash(Å)
1:B:492:ARG:HH11	6:B:60:GOL:H2	1.38	0.86
1:B:479[B]:ARG:NH1	1:B:485:GLU:HG2	2.04	0.72
1:B:304:LYS:HE2	1:B:308:VAL:HG23	1.78	0.66
1:B:434:LYS:HD2	5:B:170:2PE:H82	1.79	0.64
1:B:257:GLU:HG3	1:B:259:THR:H	1.66	0.61
1:B:325:THR:HA	1:B:330:PHE:HD2	1.66	0.60
1:B:469:GLU:HG3	7:B:83:HOH:O	2.01	0.60
1:B:266:LYS:HG3	1:B:276:TYR:CE2	2.38	0.58
1:B:499:PRO:HG2	5:B:170:2PE:H21	1.86	0.58
3:B:4:STI:O29	3:B:4:STI:H151	2.05	0.56
1:B:434:LYS:HZ1	5:B:170:2PE:H172	1.70	0.55
1:B:324:CYS:HB2	1:B:331:TYR:HB2	1.88	0.55
1:B:380:HIS:O	1:B:381:ARG:HB2	2.08	0.54
1:B:479[B]:ARG:HH12	1:B:485:GLU:HG2	1.74	0.52
1:B:328:PRO:HA	1:B:329:PRO:C	2.30	0.52
1:B:306:ALA:O	1:B:310:LYS:HG3	2.09	0.52
1:B:262:THR:OG1	1:B:281:LYS:HE2	2.10	0.52
1:A:265:HIS:H	1:A:265:HIS:CD2	2.28	0.52
1:A:256:MET:HE1	1:A:261:ILE:HD11	1.93	0.51
1:B:479[B]:ARG:CZ	1:B:485:GLU:HG2	2.43	0.48
1:B:312:ILE:CG2	1:B:317:LEU:HD13	2.44	0.48
1:B:268:GLY:O	1:B:271:GLN:HG2	2.15	0.47
1:B:291:THR:HG22	1:B:331:TYR:CD2	2.49	0.47
1:B:267:LEU:HD11	1:B:277:GLU:HB2	1.95	0.47
1:A:292:LEU:O	1:A:293:LYS:C	2.53	0.47
5:B:170:2PE:H201	5:B:170:2PE:H232	1.71	0.47
1:A:380:HIS:O	1:A:381:ARG:HB2	2.14	0.47
1:B:423:LYS:HE2	1:B:459:TYR:HB2	1.98	0.45
3:A:3:STI:O29	3:A:3:STI:H151	2.15	0.45
1:A:514:THR:O	1:A:518:GLU:HG3	2.18	0.43
1:B:464:LEU:HA	1:B:467:VAL:HG23	1.99	0.43
1:A:403:LEU:HB3	1:A:407:MET:HG3	2.01	0.42
1:B:312:ILE:HG23	1:B:317:LEU:HD13	2.02	0.41

Continued on next page...

Continued from previous page...

Atom-1	Atom-2	Distance(Å)	Clash(Å)
1:B:267:LEU:HA	1:B:267:LEU:HD12	1.87	0.41
1:B:447:LEU:O	1:B:447:LEU:HD12	2.21	0.41
1:B:325:THR:HA	1:B:330:PHE:CD2	2.52	0.41
1:B:327:GLU:HA	1:B:328:PRO:HD2	1.87	0.40
1:A:415:HIS:HE1	1:A:430:LEU:O	2.03	0.40
5:B:170:2PE:H231	5:B:170:2PE:H262	1.90	0.40
1:A:414:ALA:HA	1:A:418:ALA:O	2.20	0.40
1:B:314:HIS:CG	1:B:315:PRO:HD2	2.56	0.40

There are no symmetry-related clashes.

5.3 Torsion angles

5.3.1 Protein backbone ⓘ

In the following table, the Percentiles column shows the percent Ramachandran outliers of the chain as a percentile score with respect to all X-ray entries followed by that with respect to entries of similar resolution. The Analysed column shows the number of residues for which the backbone conformation was analysed, and the total number of residues.

Mol	Chain	Analysed	Favoured	Allowed	Outliers	Percentiles	
1	A	262/298 (88%)	254 (97%)	8 (3%)	0	100	100
1	B	252/298 (85%)	244 (97%)	8 (3%)	0	100	100
All	All	514/596 (86%)	498 (97%)	16 (3%)	0	100	100

There are no Ramachandran outliers to report.

5.3.2 Protein sidechains ⓘ

In the following table, the Percentiles column shows the percent sidechain outliers of the chain as a percentile score with respect to all X-ray entries followed by that with respect to entries of similar resolution. The Analysed column shows the number of residues for which the sidechain conformation was analysed, and the total number of residues.

Mol	Chain	Analysed	Rotameric	Outliers	Percentiles	
1	A	225/262 (86%)	222 (99%)	3 (1%)	80	71
1	B	224/262 (86%)	221 (99%)	3 (1%)	80	71
All	All	449/524 (86%)	443 (99%)	6 (1%)	80	71

All (6) residues with a non-rotameric sidechain are listed below:

Mol	Chain	Res	Type
1	A	267	LEU
1	A	293	LYS
1	A	419	LYS
1	B	267	LEU
1	B	304	LYS
1	B	447	LEU

Some sidechains can be flipped to improve hydrogen bonding and reduce clashes. All (6) such sidechains are listed below:

Mol	Chain	Res	Type
1	A	265	HIS
1	A	271	GLN
1	A	415	HIS
1	A	433	ASN
1	B	352	GLN
1	B	394	HIS

5.3.3 RNA ⓘ

There are no RNA chains in this entry.

5.4 Non-standard residues in protein, DNA, RNA chains ⓘ

There are no non-standard protein/DNA/RNA residues in this entry.

5.5 Carbohydrates ⓘ

There are no carbohydrates in this entry.

5.6 Ligand geometry ⓘ

9 ligands are modelled in this entry.

In the following table, the Counts columns list the number of bonds (or angles) for which Mogul statistics could be retrieved, the number of bonds (or angles) that are observed in the model and the number of bonds (or angles) that are defined in the chemical component dictionary. The Link column lists molecule types, if any, to which the group is linked. The Z score for a bond length (or angle) is the number of standard deviations the observed value is removed from the expected

value. A bond length (or angle) with $|Z| > 2$ is considered an outlier worth inspection. RMSZ is the root-mean-square of all Z scores of the bond lengths (or angles).

Mol	Type	Chain	Res	Link	Bond lengths			Bond angles		
					Counts	RMSZ	$\# Z > 2$	Counts	RMSZ	$\# Z > 2$
3	STI	A	3	-	41,41,41	0.79	2 (4%)	56,56,56	1.17	5 (8%)
2	SO4	A	4	-	4,4,4	0.37	0	6,6,6	0.11	0
2	SO4	A	5	-	4,4,4	0.08	0	6,6,6	0.07	0
4	3YY	A	538	-	28,28,28	1.34	4 (14%)	39,40,40	1.17	4 (10%)
5	2PE	B	170	-	27,27,27	0.55	0	26,26,26	0.77	0
2	SO4	B	3	-	4,4,4	0.08	0	6,6,6	0.07	0
3	STI	B	4	-	41,41,41	0.87	2 (4%)	56,56,56	1.15	4 (7%)
4	3YY	B	532	-	28,28,28	1.33	5 (17%)	39,40,40	1.25	4 (10%)
6	GOL	B	60	-	5,5,5	0.45	0	5,5,5	0.28	0

In the following table, the Chirals column lists the number of chiral outliers, the number of chiral centers analysed, the number of these observed in the model and the number defined in the chemical component dictionary. Similar counts are reported in the Torsion and Rings columns. '-' means no outliers of that kind were identified.

Mol	Type	Chain	Res	Link	Chirals	Torsions	Rings
3	STI	A	3	-	-	0/20/30/30	0/5/5/5
2	SO4	A	4	-	-	0/0/0/0	0/0/0/0
2	SO4	A	5	-	-	0/0/0/0	0/0/0/0
4	3YY	A	538	-	-	0/8/24/24	0/4/4/4
5	2PE	B	170	-	-	0/25/25/25	0/0/0/0
2	SO4	B	3	-	-	0/0/0/0	0/0/0/0
3	STI	B	4	-	-	0/20/30/30	0/5/5/5
4	3YY	B	532	-	-	0/8/24/24	0/4/4/4
6	GOL	B	60	-	-	0/4/4/4	0/0/0/0

All (13) bond length outliers are listed below:

Mol	Chain	Res	Type	Atoms	Z	Observed(Å)	Ideal(Å)
4	A	538	3YY	C11-C15	-4.46	1.44	1.48
4	B	532	3YY	C11-C15	-4.42	1.44	1.48
4	B	532	3YY	C18-C16	-2.90	1.50	1.53
3	B	4	STI	C5-C7	-2.87	1.44	1.48
3	A	3	STI	C9-N13	2.78	1.40	1.36
4	A	538	3YY	C12-C18	-2.72	1.47	1.52
3	B	4	STI	C9-N13	2.59	1.40	1.36
4	A	538	3YY	N19-N20	-2.57	1.34	1.38
4	B	532	3YY	C12-C18	-2.30	1.48	1.52
4	B	532	3YY	N19-N20	-2.23	1.34	1.38

Continued on next page...

Continued from previous page...

Mol	Chain	Res	Type	Atoms	Z	Observed(Å)	Ideal(Å)
4	B	532	3YY	C13-N20	-2.13	1.39	1.43
4	A	538	3YY	C13-N20	-2.12	1.39	1.43
3	A	3	STI	C5-C7	-2.07	1.45	1.48

All (17) bond angle outliers are listed below:

Mol	Chain	Res	Type	Atoms	Z	Observed(°)	Ideal(°)
3	A	3	STI	C53-C52-N51	-3.68	106.77	110.82
3	B	4	STI	C18-C19-C14	3.61	120.43	117.42
3	A	3	STI	C18-C19-C14	3.52	120.36	117.42
3	A	3	STI	C49-C50-N51	-2.86	107.66	110.82
3	B	4	STI	C53-C52-N51	-2.82	107.72	110.82
4	B	532	3YY	N21-C17-N22	-2.79	105.51	107.64
4	B	532	3YY	C16-C18-N22	-2.52	99.41	101.01
3	B	4	STI	C49-C50-N51	-2.45	108.12	110.82
3	A	3	STI	C50-N51-C52	2.34	112.81	109.54
4	A	538	3YY	C4-C8-C14	2.30	120.76	118.33
4	B	532	3YY	C11-C15-N19	-2.29	117.57	120.72
4	A	538	3YY	C12-C18-N22	-2.28	109.37	112.87
4	A	538	3YY	C13-N20-N19	2.28	120.47	118.83
4	B	532	3YY	C10-N20-N19	2.28	114.22	112.33
4	A	538	3YY	C9-C14-C8	-2.27	119.82	122.90
3	B	4	STI	C50-N51-C52	2.20	112.61	109.54
3	A	3	STI	C50-C49-N48	-2.01	106.66	110.61

There are no chirality outliers.

There are no torsion outliers.

There are no ring outliers.

5.7 Other polymers ⓘ

There are no such residues in this entry.

5.8 Polymer linkage issues

There are no chain breaks in this entry.

6 Fit of model and data ⓘ

6.1 Protein, DNA and RNA chains ⓘ

In the following table, the column labelled ‘#RSRZ> 2’ contains the number (and percentage) of RSRZ outliers, followed by percent RSRZ outliers for the chain as percentile scores relative to all X-ray entries and entries of similar resolution. The OWAB column contains the minimum, median, 95th percentile and maximum values of the occupancy-weighted average B-factor per residue. The column labelled ‘Q< 0.9’ lists the number of (and percentage) of residues with an average occupancy less than 0.9.

Mol	Chain	Analysed	<RSRZ>	#RSRZ>2	OWAB(Å ²)	Q<0.9
1	A	265/298 (88%)	0.14	11 (4%) 35 32	17, 28, 53, 66	0
1	B	257/298 (86%)	0.51	25 (9%) 8 8	17, 30, 74, 83	0
All	All	522/596 (87%)	0.32	36 (6%) 16 15	17, 29, 66, 83	0

All (36) RSRZ outliers are listed below:

Mol	Chain	Res	Type	RSRZ
1	B	418	ALA	7.3
1	B	419	LYS	6.8
1	B	292	LEU	6.0
1	B	265	HIS	5.5
1	A	418	ALA	5.4
1	B	269	GLY	5.4
1	B	420	PHE	5.4
1	A	416	ALA	4.9
1	A	414	ALA	4.5
1	B	329	PRO	4.5
1	B	300	GLU	4.4
1	A	417	GLY	4.3
1	B	257	GLU	4.1
1	A	251	TYR	3.9
1	A	293	LYS	3.5
1	B	270	GLY	3.2
1	A	408	THR	3.2
1	B	328	PRO	3.0
1	B	303	LEU	2.9
1	B	268	GLY	2.9
1	B	330	PHE	2.8
1	B	326	ARG	2.8
1	B	291	THR	2.7
1	B	256	MET	2.7

Continued on next page...

Continued from previous page...

Mol	Chain	Res	Type	RSRZ
1	B	301	GLU	2.6
1	B	299	VAL	2.6
1	A	415	HIS	2.5
1	A	432	TYR	2.5
1	B	396	VAL	2.5
1	B	273	GLY	2.3
1	B	280	TRP	2.3
1	B	262	THR	2.2
1	A	516	PHE	2.1
1	B	352	GLN	2.1
1	A	443	ALA	2.0
1	B	363	ALA	2.0

6.2 Non-standard residues in protein, DNA, RNA chains ⓘ

There are no non-standard protein/DNA/RNA residues in this entry.

6.3 Carbohydrates ⓘ

There are no carbohydrates in this entry.

6.4 Ligands ⓘ

In the following table, the Atoms column lists the number of modelled atoms in the group and the number defined in the chemical component dictionary. LLDF column lists the quality of electron density of the group with respect to its neighbouring residues in protein, DNA or RNA chains. The B-factors column lists the minimum, median, 95th percentile and maximum values of B factors of atoms in the group. The column labelled 'Q < 0.9' lists the number of atoms with occupancy less than 0.9.

Mol	Type	Chain	Res	Atoms	RSR	LLDF	B-factors(Å ²)	Q<0.9
6	GOL	B	60	6/6	0.22	7.47	22,40,46,47	0
2	SO4	A	5	5/5	0.23	5.12	55,57,58,66	0
2	SO4	B	3	5/5	0.40	3.74	65,66,84,88	0
5	2PE	B	170	28/28	0.23	3.60	40,50,59,62	0
3	STI	A	3	37/37	0.10	-0.35	18,22,32,33	0
2	SO4	A	4	5/5	0.08	-0.56	39,42,51,53	0
4	3YY	B	532	25/25	0.08	-0.95	20,23,30,38	0
4	3YY	A	538	25/25	0.07	-0.97	18,21,32,33	0
3	STI	B	4	37/37	0.09	-1.29	33,40,44,45	0

6.5 Other polymers ⓘ

There are no such residues in this entry.