



# Full wwPDB X-ray Structure Validation Report ⓘ

Sep 29, 2014 – 10:45 AM EDT

PDB ID : 4PYV  
Title : Crystal structure of renin in complex with compound4  
Authors : Ostermann, N.; Zink, F.  
Deposited on : 2014-03-28  
Resolution : 2.65 Å(reported)

This is a full wwPDB validation report for a publicly released PDB entry.  
We welcome your comments at [validation@mail.wwpdb.org](mailto:validation@mail.wwpdb.org)  
A user guide is available at <http://wwpdb.org/ValidationPDFNotes.html>

---

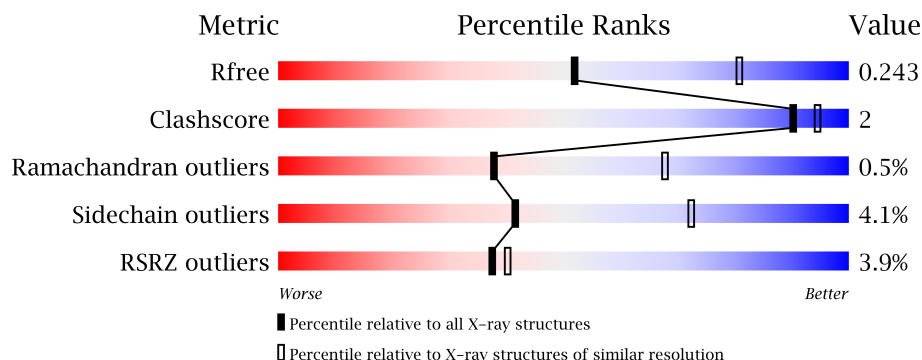
The following versions of software and data (see [references](#)) were used in the production of this report:

MolProbity : 4.02b-467  
Mogul : 1.16 November 2013  
Xtriage (Phenix) : dev-1439  
EDS : stable23828  
Percentile statistics : 21963  
Refmac : 5.8.0049  
CCP4 : 6.3.0 (Settle)  
Ideal geometry (proteins) : Engh & Huber (2001)  
Ideal geometry (DNA, RNA) : Parkinson et. al. (1996)  
Validation Pipeline (wwPDB-VP) : stable23828

# 1 Overall quality at a glance

The reported resolution of this entry is 2.65 Å.

Percentile scores (ranging between 0-100) for global validation metrics of the entry are shown in the following graphic. The table shows the number of entries on which the scores are based.



Metric	Whole archive (#Entries)	Similar resolution (#Entries, resolution range(Å))
$R_{free}$	66092	2232 (2.70-2.62)
Clashscore	79885	2700 (2.70-2.62)
Ramachandran outliers	78287	2657 (2.70-2.62)
Sidechain outliers	78261	2657 (2.70-2.62)
RSRZ outliers	66119	2234 (2.70-2.62)

The table below summarises the geometric issues observed across the polymeric chains and their fit to the electron density. The red, orange, yellow and green segments on the lower bar indicate the fraction of residues that contain outliers for  $\geq 3$ , 2, 1 and 0 types of geometric quality criteria. The upper red bar (where present) indicates the fraction of residues that have poor fit to the electron density.

Mol	Chain	Length	Quality of chain
1	A	340	
1	B	340	

## 2 Entry composition i

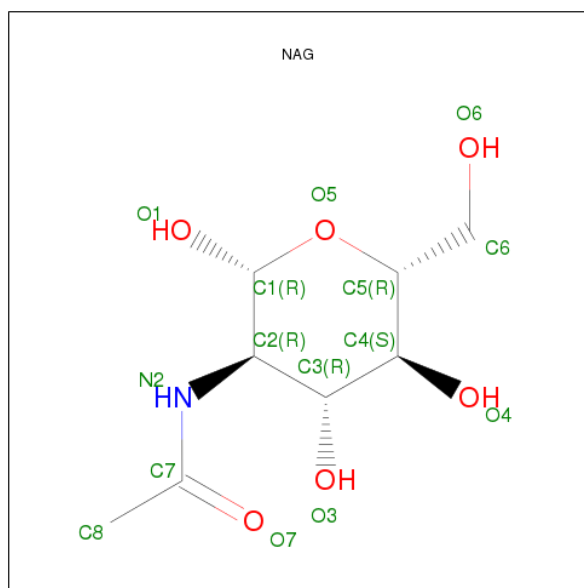
There are 6 unique types of molecules in this entry. The entry contains 5375 atoms, of which 0 are hydrogen and 0 are deuterium.

In the tables below, the ZeroOcc column contains the number of atoms modelled with zero occupancy, the AltConf column contains the number of residues with at least one atom in alternate conformation and the Trace column contains the number of residues modelled with at most 2 atoms.

- Molecule 1 is a protein called Renin.

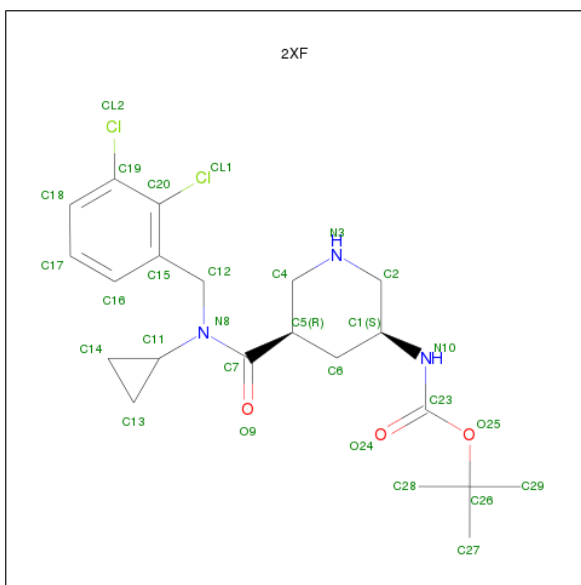
Mol	Chain	Residues	Atoms					ZeroOcc	AltConf	Trace
1	A	335	Total	C	N	O	S	0	0	0
			2578	1648	417	499	14			
1	B	334	Total	C	N	O	S	0	0	0
			2570	1642	416	498	14			

- Molecule 2 is SUGAR (N-ACETYL-D-GLUCOSAMINE) (three-letter code: NAG) (formula:  $C_8H_{15}NO_6$ ).



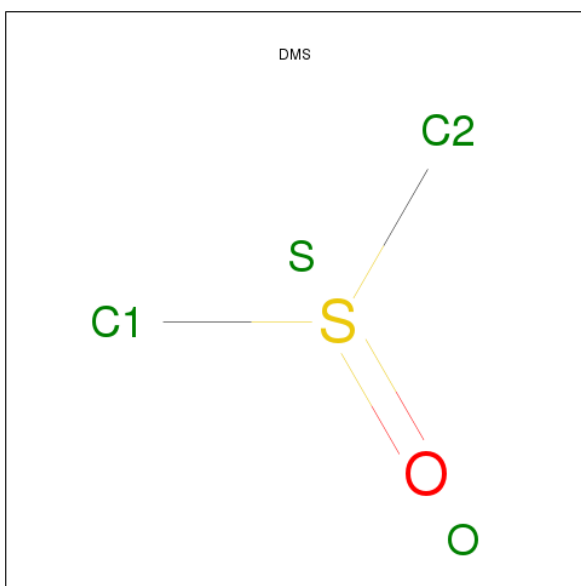
Mol	Chain	Residues	Atoms				ZeroOcc	AltConf
2	A	1	Total	C	N	O	0	0
			14	8	1	5		

- Molecule 3 is TERT-BUTYL {(3S,5R)-5-[CYCLOPROPYL(2,3-DICHLOROBENZYL)CARBAMOYL]PIPERIDIN-3-YL}CARBAMATE (three-letter code: 2XF) (formula:  $C_{21}H_{29}Cl_2N_3O_3$ ).



Mol	Chain	Residues	Atoms				ZeroOcc	AltConf
3	A	1	Total	C	Cl	N	O	0
			29	21	2	3	3	
3	B	1	Total	C	Cl	N	O	0
			29	21	2	3	3	

- Molecule 4 is DIMETHYL SULFOXIDE (three-letter code: DMS) (formula:  $C_2H_6OS$ ).



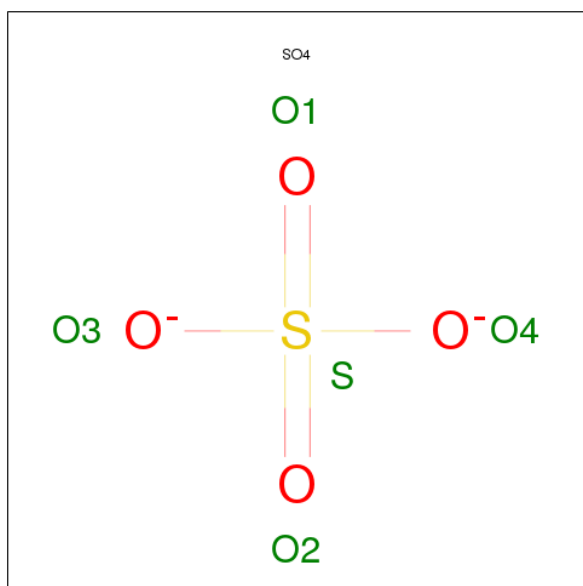
Mol	Chain	Residues	Atoms				ZeroOcc	AltConf
4	A	1	Total	C	O	S	0	0
			4	2	1	1		
4	B	1	Total	C	O	S	0	0
			4	2	1	1		

*Continued on next page...*

Continued from previous page...

Mol	Chain	Residues	Atoms				ZeroOcc	AltConf
4	B	1	Total	C	O	S	0	0
			4	2	1	1		

- Molecule 5 is SULFATE ION (three-letter code: SO4) (formula: O<sub>4</sub>S).



Mol	Chain	Residues	Atoms			ZeroOcc	AltConf
5	A	1	Total	O	S	0	0
			5	4	1		

- Molecule 6 is water.

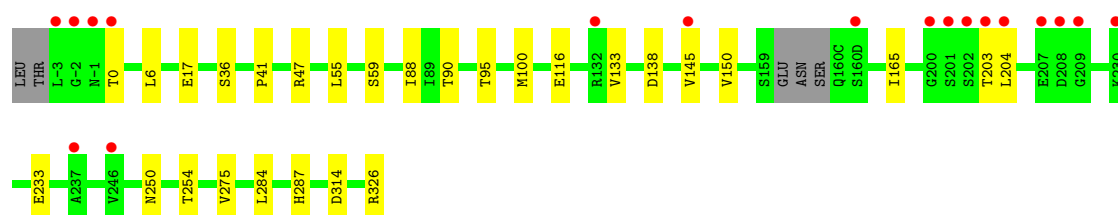
Mol	Chain	Residues	Atoms		ZeroOcc	AltConf
6	A	61	Total	O	0	0
			61	61		
6	B	77	Total	O	0	0
			77	77		

### 3 Residue-property plots i

These plots are drawn for all protein, RNA and DNA chains in the entry. The first graphic for a chain summarises the proportions of errors displayed in the second graphic. The second graphic shows the sequence view annotated by issues in geometry and electron density. Residues are color-coded according to the number of geometric quality criteria for which they contain at least one outlier: green = 0, yellow = 1, orange = 2 and red = 3 or more. A red dot above a residue indicates a poor fit to the electron density ( $RSRZ > 2$ ). Stretches of 2 or more consecutive residues without any outlier are shown as a green connector. Residues present in the sample, but not in the model, are shown in grey.

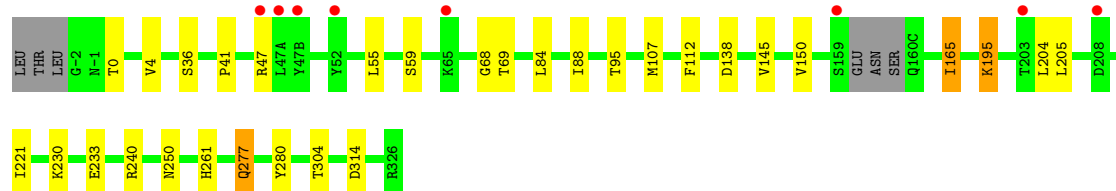
#### • Molecule 1: Renin

Chain A:



#### • Molecule 1: Renin

Chain B:



## 4 Data and refinement statistics

Property	Value	Source
Space group	P 21 3	Depositor
Cell constants a, b, c, $\alpha$ , $\beta$ , $\gamma$	141.90Å 141.90Å 141.90Å 90.00° 90.00° 90.00°	Depositor
Resolution (Å)	42.78 – 2.65 40.96 – 2.65	Depositor EDS
% Data completeness (in resolution range)	99.5 (42.78-2.65) 99.6 (40.96-2.65)	Depositor EDS
$R_{merge}$	(Not available)	Depositor
$R_{sym}$	(Not available)	Depositor
$\langle I/\sigma(I) \rangle$ <sup>1</sup>	2.16 (at 2.65Å)	Xtriage
Refinement program	BUSTER 2.11.4	Depositor
R, $R_{free}$	0.201 , 0.241 0.201 , 0.243	Depositor DCC
$R_{free}$ test set	2781 reflections (11.13%)	DCC
Wilson B-factor (Å <sup>2</sup> )	62.9	Xtriage
Anisotropy	0.000	Xtriage
Bulk solvent $k_{sol}$ (e/Å <sup>3</sup> ), $B_{sol}$ (Å <sup>2</sup> )	0.34 , 50.3	EDS
Estimated twinning fraction	0.023 for l,-k,h	Xtriage
L-test for twinning	$\langle  L  \rangle = 0.50$ , $\langle L^2 \rangle = 0.34$	Xtriage
Outliers	0 of 27773 reflections	Xtriage
$F_o, F_c$ correlation	0.95	EDS
Total number of atoms	5375	wwPDB-VP
Average B, all atoms (Å <sup>2</sup> )	66.0	wwPDB-VP

Xtriage's analysis on translational NCS is as follows: *The largest off-origin peak in the Patterson function is 3.10% of the height of the origin peak. No significant pseudotranslation is detected.*

<sup>1</sup>Intensities estimated from amplitudes.

## 5 Model quality

### 5.1 Standard geometry

Bond lengths and bond angles in the following residue types are not validated in this section: SO4, DMS, NAG, 2XF

The Z score for a bond length (or angle) is the number of standard deviations the observed value is removed from the expected value. A bond length (or angle) with  $|Z| > 5$  is considered an outlier worth inspection. RMSZ is the root-mean-square of all Z scores of the bond lengths (or angles).

Mol	Chain	Bond lengths		Bond angles	
		RMSZ	$\# Z  > 5$	RMSZ	$\# Z  > 5$
1	A	0.51	0/2637	0.72	0/3575
1	B	0.52	0/2629	0.72	0/3564
All	All	0.52	0/5266	0.72	0/7139

There are no bond length outliers.

There are no bond angle outliers.

There are no chirality outliers.

There are no planarity outliers.

### 5.2 Close contacts

In the following table, the Non-H and H(model) columns list the number of non-hydrogen atoms and hydrogen atoms in the chain respectively. The H(added) column lists the number of hydrogens added by MolProbity. The Clashes column lists the number of clashes within the asymmetric unit, and the number in parentheses is this value normalized per 1000 atoms of the molecule in the chain. The Symm-Clashes column gives symmetry related clashes, in the same way as for the Clashes column.

Mol	Chain	Non-H	H(model)	H(added)	Clashes	Symm-Clashes
1	A	2578	0	2510	7	0
1	B	2570	0	2500	15	0
2	A	14	0	13	0	0
3	A	29	0	0	0	0
3	B	29	0	0	0	0
4	A	4	0	6	0	0
4	B	8	0	12	0	0
5	A	5	0	0	0	0
6	A	61	0	0	0	0
6	B	77	0	0	0	0

*Continued on next page...*



*Continued from previous page...*

Mol	Chain	Non-H	H(model)	H(added)	Clashes	Symm-Clashes
All	All	5375	0	5041	22	0

Clashscore is defined as the number of clashes calculated for the entry per 1000 atoms (including hydrogens) of the entry. The overall clashscore for this entry is 2.

All (22) close contacts within the same asymmetric unit are listed below.

Atom-1	Atom-2	Distance(Å)	Clash(Å)
1:B:195:LYS:HD3	1:B:261:HIS:HD2	1.47	0.80
1:B:195:LYS:HD3	1:B:261:HIS:CD2	2.20	0.76
1:B:277:GLN:HG2	1:B:280:TYR:CE2	2.21	0.75
1:B:4:VAL:HB	1:B:165:ILE:HG23	1.74	0.70
1:B:277:GLN:HG2	1:B:280:TYR:CZ	2.30	0.67
1:B:150:VAL:HG12	1:B:314:ASP:HA	1.82	0.61
1:A:6:LEU:HD21	1:A:165:ILE:HD12	1.90	0.53
1:B:107:MET:HE3	1:B:112:PHE:HB3	1.90	0.51
1:A:275:VAL:HG22	1:A:284:LEU:HD22	1.92	0.50
1:B:195:LYS:HB2	1:B:261:HIS:CD2	2.46	0.49
1:B:0:THR:HB	1:B:145:VAL:O	2.12	0.49
1:A:0:THR:HB	1:A:145:VAL:O	2.14	0.47
1:A:88:ILE:HG23	1:A:95:THR:HG23	1.98	0.46
1:A:41:PRO:HB2	1:A:55:LEU:HD23	1.98	0.46
1:A:150:VAL:HG12	1:A:314:ASP:HA	1.98	0.45
1:B:88:ILE:HG23	1:B:95:THR:HG23	1.99	0.45
1:B:41:PRO:HB2	1:B:55:LEU:HD23	2.00	0.44
1:B:69:THR:HB	1:B:84:LEU:HD12	2.00	0.44
1:B:195:LYS:HB2	1:B:261:HIS:HD2	1.84	0.42
1:A:100:MET:HB3	1:A:133:VAL:CG1	2.49	0.42
1:B:221:ILE:HG13	1:B:304:THR:HB	2.01	0.42
1:B:205:LEU:HD21	1:B:230:LYS:HB2	2.03	0.41

There are no symmetry-related clashes.

## 5.3 Torsion angles

### 5.3.1 Protein backbone ⓘ

In the following table, the Percentiles column shows the percent Ramachandran outliers of the chain as a percentile score with respect to all X-ray entries followed by that with respect to entries of similar resolution.

The Analysed column shows the number of residues for which the backbone conformation was analysed, and the total number of residues.

Mol	Chain	Analysed	Favoured	Allowed	Outliers	Percentiles	
1	A	331/340 (97%)	325 (98%)	5 (2%)	1 (0%)	50	80
1	B	330/340 (97%)	325 (98%)	3 (1%)	2 (1%)	33	63
All	All	661/680 (97%)	650 (98%)	8 (1%)	3 (0%)	38	68

All (3) Ramachandran outliers are listed below:

Mol	Chain	Res	Type
1	B	240	ARG
1	A	203	THR
1	B	68	GLY

### 5.3.2 Protein sidechains ⓘ

In the following table, the Percentiles column shows the percent sidechain outliers of the chain as a percentile score with respect to all X-ray entries followed by that with respect to entries of similar resolution. The Analysed column shows the number of residues for which the sidechain conformation was analysed, and the total number of residues.

Mol	Chain	Analysed	Rotameric	Outliers	Percentiles	
1	A	283/290 (98%)	270 (95%)	13 (5%)	37	67
1	B	282/290 (97%)	272 (96%)	10 (4%)	48	78
All	All	565/580 (97%)	542 (96%)	23 (4%)	41	72

All (23) residues with a non-rotameric sidechain are listed below:

Mol	Chain	Res	Type
1	A	17	GLU
1	A	36	SER
1	A	47	ARG
1	A	59	SER
1	A	90	THR
1	A	116	GLU
1	A	138	ASP
1	A	204	LEU
1	A	233	GLU
1	A	250	ASN
1	A	254	THR
1	A	287	HIS
1	A	326	ARG
1	B	36	SER

*Continued on next page...*

*Continued from previous page...*

Mol	Chain	Res	Type
1	B	47	ARG
1	B	59	SER
1	B	138	ASP
1	B	165	ILE
1	B	195	LYS
1	B	204	LEU
1	B	233	GLU
1	B	250	ASN
1	B	277	GLN

Some sidechains can be flipped to improve hydrogen bonding and reduce clashes. All (6) such sidechains are listed below:

Mol	Chain	Res	Type
1	A	86	GLN
1	A	250	ASN
1	A	318	ASN
1	B	250	ASN
1	B	277	GLN
1	B	318	ASN

### 5.3.3 RNA ⓘ

There are no RNA chains in this entry.

## 5.4 Non-standard residues in protein, DNA, RNA chains ⓘ

There are no non-standard protein/DNA/RNA residues in this entry.

## 5.5 Carbohydrates ⓘ

There are no carbohydrates in this entry.

## 5.6 Ligand geometry ⓘ

7 ligands are modelled in this entry.

In the following table, the Counts columns list the number of bonds (or angles) for which Mogul statistics could be retrieved, the number of bonds (or angles) that are observed in the model and the number of bonds (or angles) that are defined in the chemical component dictionary. The Link

column lists molecule types, if any, to which the group is linked. The Z score for a bond length (or angle) is the number of standard deviations the observed value is removed from the expected value. A bond length (or angle) with  $|Z| > 2$  is considered an outlier worth inspection. RMSZ is the root-mean-square of all Z scores of the bond lengths (or angles).

Mol	Type	Chain	Res	Link	Bond lengths			Bond angles		
					Counts	RMSZ	$\# Z  > 2$	Counts	RMSZ	$\# Z  > 2$
2	NAG	A	1000	1	12,14,15	0.31	0	15,19,21	0.53	0
3	2XF	A	1001	-	31,31,31	1.68	6 (19%)	45,45,45	2.44	12 (26%)
4	DMS	A	1002	-	3,3,3	0.40	0	3,3,3	0.65	0
5	SO4	A	1003	-	4,4,4	0.21	0	6,6,6	0.40	0
3	2XF	B	1000	-	31,31,31	1.51	5 (16%)	45,45,45	2.08	14 (31%)
4	DMS	B	1001	-	3,3,3	0.21	0	3,3,3	0.54	0
4	DMS	B	1002	-	3,3,3	0.14	0	3,3,3	0.39	0

In the following table, the Chirals column lists the number of chiral outliers, the number of chiral centers analysed, the number of these observed in the model and the number defined in the chemical component dictionary. Similar counts are reported in the Torsion and Rings columns. '-' means no outliers of that kind were identified.

Mol	Type	Chain	Res	Link	Chirals	Torsions	Rings
2	NAG	A	1000	1	-	0/6/23/26	0/1/1/1
3	2XF	A	1001	-	-	0/25/37/37	0/2/3/3
4	DMS	A	1002	-	-	0/0/0/0	0/0/0/0
5	SO4	A	1003	-	-	0/0/0/0	0/0/0/0
3	2XF	B	1000	-	-	0/25/37/37	0/2/3/3
4	DMS	B	1001	-	-	0/0/0/0	0/0/0/0
4	DMS	B	1002	-	-	0/0/0/0	0/0/0/0

All (11) bond length outliers are listed below:

Mol	Chain	Res	Type	Atoms	Z	Observed(Å)	Ideal(Å)
3	A	1001	2XF	C2-C1	3.59	1.56	1.52
3	A	1001	2XF	C13-C11	3.48	1.55	1.48
3	A	1001	2XF	C14-C11	3.33	1.55	1.48
3	B	1000	2XF	C2-C1	3.30	1.55	1.52
3	B	1000	2XF	C14-C11	3.20	1.54	1.48
3	B	1000	2XF	C13-C11	3.11	1.54	1.48
3	A	1001	2XF	C20-C15	2.63	1.42	1.39
3	B	1000	2XF	C20-C15	2.20	1.41	1.39
3	A	1001	2XF	C27-C26	2.14	1.57	1.51
3	B	1000	2XF	C7-N8	2.12	1.38	1.34
3	A	1001	2XF	C7-N8	2.01	1.38	1.34

All (26) bond angle outliers are listed below:

Mol	Chain	Res	Type	Atoms	Z	Observed(°)	Ideal(°)
3	A	1001	2XF	C15-C12-N8	8.53	123.56	112.86
3	A	1001	2XF	C5-C7-N8	6.30	126.03	118.72
3	B	1000	2XF	C5-C7-N8	5.66	125.30	118.72
3	B	1000	2XF	O9-C7-C5	-5.15	112.67	120.82
3	A	1001	2XF	C4-N3-C2	4.89	118.49	111.98
3	A	1001	2XF	O9-C7-C5	-4.17	114.22	120.82
3	B	1000	2XF	C2-C1-N10	3.93	114.97	109.78
3	A	1001	2XF	C6-C5-C4	-3.60	106.01	109.66
3	A	1001	2XF	C1-N10-C23	-3.58	116.59	122.14
3	B	1000	2XF	C26-O25-C23	3.57	126.95	121.09
3	A	1001	2XF	C4-C5-C7	3.50	116.83	110.48
3	A	1001	2XF	C5-C4-N3	-3.43	105.18	111.40
3	B	1000	2XF	C4-C5-C7	3.32	116.51	110.48
3	B	1000	2XF	C15-C12-N8	3.25	116.93	112.86
3	A	1001	2XF	C6-C1-N10	2.93	114.68	110.36
3	B	1000	2XF	C15-C20-CL1	2.90	122.19	118.92
3	B	1000	2XF	C4-N3-C2	2.68	115.55	111.98
3	B	1000	2XF	C5-C4-N3	-2.68	106.54	111.40
3	A	1001	2XF	O25-C26-C27	2.50	117.18	107.21
3	B	1000	2XF	C13-C11-N8	2.47	122.40	118.91
3	B	1000	2XF	C6-C5-C7	-2.46	106.07	110.45
3	A	1001	2XF	C12-C15-C20	-2.41	116.66	121.40
3	A	1001	2XF	O25-C23-N10	2.31	113.93	110.06
3	B	1000	2XF	C5-C6-C1	-2.29	108.70	110.81
3	B	1000	2XF	O25-C26-C27	2.20	116.00	107.21
3	B	1000	2XF	C1-N10-C23	-2.15	118.81	122.14

There are no chirality outliers.

There are no torsion outliers.

There are no ring outliers.

## 5.7 Other polymers ⓘ

There are no such residues in this entry.

## 5.8 Polymer linkage issues

There are no chain breaks in this entry.

## 6 Fit of model and data ⓘ

### 6.1 Protein, DNA and RNA chains ⓘ

In the following table, the column labelled ‘#RSRZ> 2’ contains the number (and percentage) of RSRZ outliers, followed by percent RSRZ outliers for the chain as percentile scores relative to all X-ray entries and entries of similar resolution. The OWAB column contains the minimum, median, 95<sup>th</sup> percentile and maximum values of the occupancy-weighted average B-factor per residue. The column labelled ‘Q< 0.9’ lists the number of (and percentage) of residues with an average occupancy less than 0.9.

Mol	Chain	Analysed	<RSRZ>	#RSRZ>2	OWAB(Å <sup>2</sup> )	Q<0.9
1	A	335/340 (98%)	0.13	18 (5%) 25 26	44, 66, 100, 121	0
1	B	334/340 (98%)	-0.03	8 (2%) 56 60	41, 62, 91, 129	0
All	All	669/680 (98%)	0.05	26 (3%) 37 40	41, 63, 95, 129	0

All (26) RSRZ outliers are listed below:

Mol	Chain	Res	Type	RSRZ
1	A	-3	LEU	6.4
1	B	47(A)	LEU	6.3
1	B	47(B)	TYR	6.3
1	A	204	LEU	6.2
1	A	207	GLU	6.1
1	B	47	ARG	4.7
1	A	208	ASP	4.7
1	A	203	THR	4.6
1	A	202	SER	4.5
1	A	-2	GLY	4.4
1	A	-1	ASN	4.4
1	A	200	GLY	4.2
1	B	159	SER	3.6
1	A	201	SER	3.4
1	A	237	ALA	3.3
1	A	230	LYS	3.0
1	A	145	VAL	2.8
1	A	0	THR	2.8
1	A	160(D)	SER	2.3
1	A	132	ARG	2.3
1	A	209	GLY	2.3
1	B	52	TYR	2.2
1	B	208	ASP	2.1
1	B	203	THR	2.0

*Continued on next page...*

*Continued from previous page...*

Mol	Chain	Res	Type	RSRZ
1	A	246	VAL	2.0
1	B	65	LYS	2.0

## 6.2 Non-standard residues in protein, DNA, RNA chains ⓘ

There are no non-standard protein/DNA/RNA residues in this entry.

## 6.3 Carbohydrates ⓘ

There are no carbohydrates in this entry.

## 6.4 Ligands ⓘ

In the following table, the Atoms column lists the number of modelled atoms in the group and the number defined in the chemical component dictionary. LLDF column lists the quality of electron density of the group with respect to its neighbouring residues in protein, DNA or RNA chains. The B-factors column lists the minimum, median, 95<sup>th</sup> percentile and maximum values of B factors of atoms in the group. The column labelled 'Q< 0.9' lists the number of atoms with occupancy less than 0.9.

Mol	Type	Chain	Res	Atoms	RSR	LLDF	B-factors(Å <sup>2</sup> )	Q<0.9
3	2XF	B	1000	29/29	0.17	-	48,60,76,81	0
2	NAG	A	1000	14/15	0.20	-	83,87,93,97	0
3	2XF	A	1001	29/29	0.30	-	69,88,99,102	0
4	DMS	B	1002	4/4	0.14	-	72,75,77,78	0
4	DMS	A	1002	4/4	0.13	-	58,63,66,72	0
4	DMS	B	1001	4/4	0.19	-	51,54,54,55	0
5	SO4	A	1003	5/5	0.19	-	101,103,104,105	0

## 6.5 Other polymers ⓘ

There are no such residues in this entry.