



# Full wwPDB X-ray Structure Validation Report ⓘ

Feb 26, 2014 – 06:16 PM GMT

PDB ID : 1Q1K  
Title : Structure of ATP-phosphoribosyltransferase from *E. coli* complexed with PR-ATP  
Authors : Lohkamp, B.; McDermott, G.; Coggins, J.R.; Lapthorn, A.J.  
Deposited on : 2003-07-21  
Resolution : 2.90 Å (reported)

This is a full wwPDB validation report for a publicly released PDB entry.  
We welcome your comments at [validation@mail.wwpdb.org](mailto:validation@mail.wwpdb.org)  
A user guide is available at <http://wwpdb.org/ValidationPDFNotes.html>

---

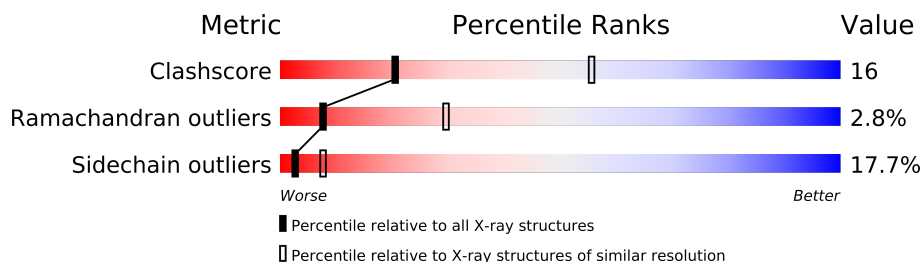
The following versions of software and data (see [references](#)) were used in the production of this report:

MolProbity : 4.02b-467  
Mogul : 1.15 2013  
Xtriage (Phenix) : **NOT EXECUTED**  
EDS : **NOT EXECUTED**  
Percentile statistics : 21963  
Ideal geometry (proteins) : Engh & Huber (2001)  
Ideal geometry (DNA, RNA) : Parkinson et. al. (1996)  
Validation Pipeline (wwPDB-VP) : stable22683

# 1 Overall quality at a glance

The reported resolution of this entry is 2.90 Å.


Percentile scores (ranging between 0-100) for global validation metrics of the entry are shown in the following graphic. The table shows the number of entries on which the scores are based.



Metric	Whole archive (#Entries)	Similar resolution (#Entries, resolution range(Å))
Clashscore	79885	1326 (2.90-2.90)
Ramachandran outliers	78287	1290 (2.90-2.90)
Sidechain outliers	78261	1292 (2.90-2.90)

The table below summarises the geometric issues observed across the polymeric chains and their fit to the electron density. The red, orange, yellow and green segments on the lower bar indicate the fraction of residues that contain outliers for  $\geq 3$ , 2, 1 and 0 types of geometric quality criteria. The upper red bar (where present) indicates the fraction of residues that have poor fit to the electron density.

Note EDS was not executed.

Mol	Chain	Length	Quality of chain
1	A	299	

## 2 Entry composition i

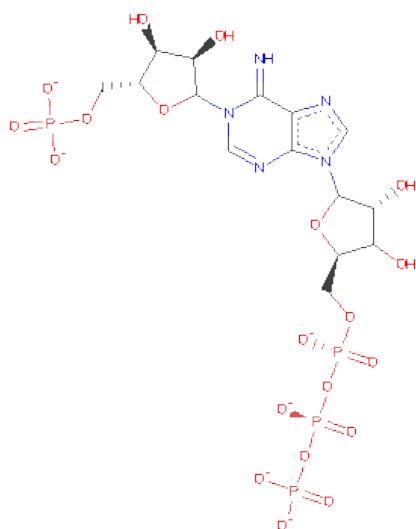
There are 3 unique types of molecules in this entry. The entry contains 2251 atoms, of which 0 are hydrogen and 0 are deuterium.

In the tables below, the ZeroOcc column contains the number of atoms modelled with zero occupancy, the AltConf column contains the number of residues with at least one atom in alternate conformation and the Trace column contains the number of residues modelled with at most 2 atoms.

- Molecule 1 is a protein called ATP phosphoribosyltransferase.

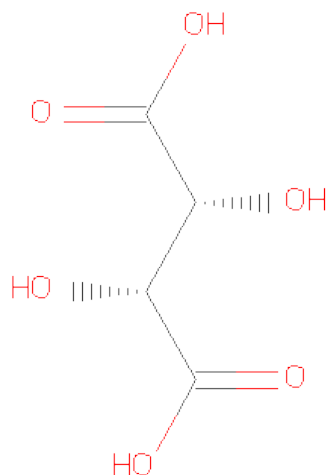
Mol	Chain	Residues	Atoms					ZeroOcc	AltConf	Trace
			Total	C	N	O	S			
1	A	288	2187	1372	385	413	17	0	0	0

- Molecule 2 is PHOSPHORIBOSYL ATP (three-letter code: PRT) (formula: C<sub>15</sub>H<sub>19</sub>N<sub>5</sub>O<sub>20</sub>P<sub>4</sub>).



Mol	Chain	Residues	Atoms					ZeroOcc	AltConf
			Total	C	N	O	P		
2	A	1	44	15	5	20	4	21	0

- Molecule 3 is L(+)-TARTARIC ACID (three-letter code: TLA) (formula: C<sub>4</sub>H<sub>6</sub>O<sub>6</sub>).



Mol	Chain	Residues	Atoms			ZeroOcc	AltConf
3	A	1	Total	C	O	0	0
			10	4	6		
3	A	1	Total	C	O	0	0
			10	4	6		

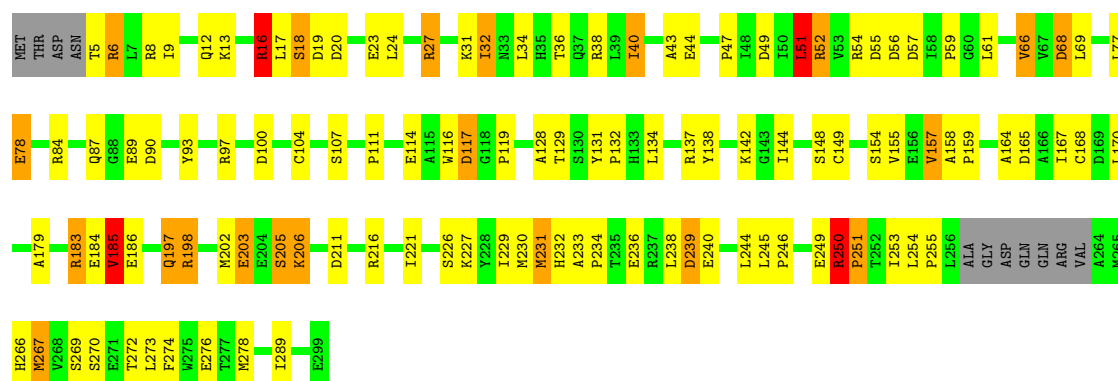
### 3 Residue-property plots

These plots are drawn for all protein, RNA and DNA chains in the entry. The first graphic for a chain summarises the proportions of errors displayed in the second graphic. The second graphic shows the sequence view annotated by issues in geometry and electron density. Residues are color-coded according to the number of geometric quality criteria for which they contain at least one outlier: green = 0, yellow = 1, orange = 2 and red = 3 or more. A red dot above a residue indicates a poor fit to the electron density ( $RSRZ > 2$ ). Stretches of 2 or more consecutive residues without any outlier are shown as a green connector. Residues present in the sample, but not in the model, are shown in grey.

Note EDS was not executed.

- Molecule 1: ATP phosphoribosyltransferase

Chain A: 



## 4 Data and refinement statistics

Xtriage (Phenix) and EDS were not executed - this section will therefore be incomplete.

Property	Value	Source
Space group	H 3 2	Depositor
Cell constants a, b, c, $\alpha$ , $\beta$ , $\gamma$	132.10Å 132.10Å 113.38Å 90.00° 90.00° 120.00°	Depositor
Resolution (Å)	50.00 – 2.90	Depositor
% Data completeness (in resolution range)	99.2 (50.00-2.90)	Depositor
$R_{merge}$	0.06	Depositor
$R_{sym}$	(Not available)	Depositor
Refinement program	REFMAC 5.1.24	Depositor
R, $R_{free}$	0.210 , 0.272	Depositor
Estimated twinning fraction	No twinning to report.	Xtriage
Total number of atoms	2251	wwPDB-VP
Average B, all atoms (Å <sup>2</sup> )	44.0	wwPDB-VP

## 5 Model quality

### 5.1 Standard geometry

Bond lengths and bond angles in the following residue types are not validated in this section: PRT, TLA

The Z score for a bond length (or angle) is the number of standard deviations the observed value is removed from the expected value. A bond length (or angle) with  $|Z| > 5$  is considered an outlier worth inspection. RMSZ is the root-mean-square of all Z scores of the bond lengths (or angles).

Mol	Chain	Bond lengths		Bond angles	
		RMSZ	$\# Z  > 5$	RMSZ	$\# Z  > 5$
1	A	0.79	1/2212 (0.0%)	1.08	16/2986 (0.5%)

All (1) bond length outliers are listed below:

Mol	Chain	Res	Type	Atoms	Z	Observed(Å)	Ideal(Å)
1	A	87	GLN	CG-CD	6.28	1.65	1.51

All (16) bond angle outliers are listed below:

Mol	Chain	Res	Type	Atoms	Z	Observed(°)	Ideal(°)
1	A	165	ASP	CB-CG-OD2	9.11	126.50	118.30
1	A	17	LEU	CA-CB-CG	7.95	133.59	115.30
1	A	55	ASP	CB-CG-OD1	7.70	125.23	118.30
1	A	49	ASP	CB-CG-OD2	7.04	124.63	118.30
1	A	19	ASP	CB-CG-OD2	6.51	124.16	118.30
1	A	231	MET	CB-CG-SD	-6.50	92.89	112.40
1	A	234	PRO	N-CA-CB	6.12	110.64	103.30
1	A	90	ASP	CB-CG-OD2	6.11	123.80	118.30
1	A	255	PRO	N-CA-CB	5.55	109.97	103.30
1	A	20	ASP	CB-CG-OD2	5.44	123.20	118.30
1	A	211	ASP	CB-CG-OD2	5.28	123.05	118.30
1	A	57	ASP	CB-CG-OD2	5.22	123.00	118.30
1	A	68	ASP	CB-CG-OD2	5.21	122.99	118.30
1	A	16	ARG	NE-CZ-NH1	5.15	122.87	120.30
1	A	117	ASP	CB-CG-OD2	5.13	122.92	118.30
1	A	51	LEU	CA-CB-CG	5.12	127.08	115.30

There are no chirality outliers.

There are no planarity outliers.

## 5.2 Close contacts ⓘ

In the following table, the Non-H and H(model) columns list the number of non-hydrogen atoms and hydrogen atoms in the chain respectively. The H(added) column lists the number of hydrogens added by MolProbity. The Clashes column lists the number of clashes within the asymmetric unit, and the number in parentheses is this value normalized per 1000 atoms of the molecule in the chain. The Symm-Clashes column gives symmetry related clashes, in the same way as for the Clashes column.

Mol	Chain	Non-H	H(model)	H(added)	Clashes	Symm-Clashes
1	A	2187	0	2215	70	0
2	A	44	0	7	1	0
3	A	20	0	8	0	0
All	All	2251	0	2230	70	0

Clashscore is defined as the number of clashes calculated for the entry per 1000 atoms (including hydrogens) of the entry. The overall clashscore for this entry is 16.

All (70) close contacts within the same asymmetric unit are listed below.

Atom-1	Atom-2	Distance(Å)	Clash(Å)
1:A:183:ARG:HG2	1:A:183:ARG:HH21	1.25	0.99
1:A:52:ARG:HH11	1:A:52:ARG:HG2	1.41	0.84
1:A:245:LEU:HD21	1:A:273:LEU:HD21	1.60	0.82
1:A:183:ARG:HG2	1:A:183:ARG:NH2	1.92	0.81
1:A:230:MET:HG2	1:A:266:HIS:ND1	2.01	0.75
1:A:68:ASP:HA	1:A:198:ARG:HD3	1.70	0.71
1:A:128:ALA:HA	1:A:149:CYS:O	1.91	0.71
1:A:9:ILE:HG12	1:A:69:LEU:HB2	1.73	0.70
1:A:77:LEU:HD21	1:A:93:TYR:CE1	2.29	0.67
1:A:61:LEU:HD22	1:A:66:VAL:HG11	1.75	0.67
1:A:32:ILE:HD11	1:A:34:LEU:HD21	1.76	0.66
1:A:12:GLN:O	1:A:18:SER:HB3	1.96	0.66
1:A:8:ARG:NH1	1:A:66:VAL:O	2.30	0.64
1:A:183:ARG:HG3	1:A:184:GLU:O	1.98	0.63
1:A:16:ARG:HG3	1:A:16:ARG:HH11	1.64	0.62
1:A:183:ARG:CG	1:A:183:ARG:HH21	2.07	0.62
1:A:32:ILE:HG22	1:A:43:ALA:HA	1.81	0.62
1:A:154:SER:O	1:A:157:VAL:HG22	2.00	0.61
1:A:249:GLU:O	1:A:250:ARG:HB3	1.99	0.61
1:A:158:ALA:HB3	1:A:159:PRO:HD3	1.81	0.60
1:A:69:LEU:HD21	1:A:197:GLN:HG3	1.85	0.59
1:A:202:MET:HE1	1:A:206:LYS:HB2	1.84	0.58
1:A:6:ARG:HB2	1:A:47:PRO:O	2.04	0.58
1:A:100:ASP:OD1	1:A:221:ILE:HG12	2.03	0.58

*Continued on next page...*



*Continued from previous page...*

Atom-1	Atom-2	Distance(Å)	Clash(Å)
1:A:40:ILE:HD12	1:A:51:LEU:HD22	1.86	0.58
1:A:129:THR:HG23	1:A:131:TYR:H	1.68	0.58
1:A:231:MET:HG2	1:A:289:ILE:HG12	1.86	0.58
1:A:203:GLU:OE2	1:A:205:SER:HB3	2.05	0.56
1:A:6:ARG:NH2	1:A:47:PRO:HA	2.19	0.56
1:A:239:ASP:N	1:A:239:ASP:OD2	2.38	0.55
1:A:52:ARG:NH1	1:A:52:ARG:HG2	2.15	0.55
1:A:111:PRO:HD2	1:A:114:GLU:OE1	2.07	0.54
1:A:107:SER:O	1:A:168:CYS:HA	2.09	0.53
1:A:32:ILE:O	1:A:32:ILE:HG13	2.07	0.53
1:A:142:LYS:HB3	1:A:144:ILE:HD12	1.89	0.53
1:A:272:THR:HB	1:A:274:PHE:CE1	2.44	0.52
1:A:69:LEU:CD2	1:A:197:GLN:HG3	2.39	0.52
1:A:138:TYR:OH	1:A:186:GLU:CD	2.49	0.52
1:A:32:ILE:HD11	1:A:34:LEU:CD2	2.40	0.51
1:A:226:SER:C	1:A:227:LYS:HG2	2.32	0.51
1:A:254:LEU:HD12	1:A:266:HIS:CD2	2.46	0.50
1:A:198:ARG:HH11	1:A:202:MET:HG2	1.76	0.49
1:A:78:GLU:HB3	1:A:134:LEU:HD21	1.94	0.49
1:A:159:PRO:HA	1:A:164:ALA:O	2.13	0.48
1:A:66:VAL:HG13	1:A:66:VAL:O	2.12	0.48
1:A:155:VAL:HG12	1:A:155:VAL:O	2.15	0.46
1:A:23:GLU:O	1:A:24:LEU:C	2.53	0.46
1:A:116:TRP:CD1	1:A:185:VAL:HG22	2.50	0.46
1:A:131:TYR:CD2	1:A:134:LEU:HD12	2.51	0.46
1:A:27:ARG:HA	1:A:27:ARG:HD3	1.60	0.45
1:A:245:LEU:HD23	1:A:245:LEU:HA	1.70	0.45
1:A:251:PRO:HA	1:A:267:MET:HG2	1.99	0.45
1:A:131:TYR:O	1:A:132:PRO:C	2.56	0.44
1:A:129:THR:HG23	1:A:131:TYR:N	2.31	0.44
1:A:119:PRO:HG3	1:A:186:GLU:OE1	2.18	0.44
1:A:84:ARG:HD3	1:A:89:GLU:OE1	2.16	0.44
1:A:116:TRP:CE2	1:A:185:VAL:HG13	2.52	0.44
1:A:104:CYS:HB3	2:A:500:PRT:H8	2.00	0.44
1:A:167:ILE:C	1:A:167:ILE:HD12	2.38	0.44
1:A:59:PRO:HG3	1:A:77:LEU:HA	2.00	0.44
1:A:78:GLU:HG2	1:A:137:ARG:HH22	1.83	0.44
1:A:61:LEU:HA	1:A:61:LEU:HD23	1.71	0.43
1:A:16:ARG:HH11	1:A:16:ARG:CG	2.31	0.43
1:A:202:MET:HB3	1:A:202:MET:HE2	1.80	0.43
1:A:31:LYS:O	1:A:32:ILE:HG22	2.19	0.42
1:A:170:LEU:HA	1:A:170:LEU:HD23	1.70	0.42

*Continued on next page...*

*Continued from previous page...*

Atom-1	Atom-2	Distance(Å)	Clash(Å)
1:A:51:LEU:HD23	1:A:51:LEU:N	2.34	0.42
1:A:198:ARG:NH1	1:A:202:MET:HG2	2.35	0.41
1:A:61:LEU:HD22	1:A:66:VAL:CG1	2.46	0.41
1:A:198:ARG:HH11	1:A:202:MET:CG	2.34	0.40

There are no symmetry-related clashes.

## 5.3 Torsion angles

### 5.3.1 Protein backbone ⓘ

In the following table, the Percentiles column shows the percent Ramachandran outliers of the chain as a percentile score with respect to all X-ray entries followed by that with respect to entries of similar resolution. The Analysed column shows the number of residues for which the backbone conformation was analysed, and the total number of residues.

Mol	Chain	Analysed	Favoured	Allowed	Outliers	Percentiles
1	A	284/299 (95%)	247 (87%)	29 (10%)	8 (3%)	8 29

All (8) Ramachandran outliers are listed below:

Mol	Chain	Res	Type
1	A	233	ALA
1	A	56	ASP
1	A	236	GLU
1	A	250	ARG
1	A	251	PRO
1	A	185	VAL
1	A	179	ALA
1	A	246	PRO

### 5.3.2 Protein sidechains ⓘ

In the following table, the Percentiles column shows the percent sidechain outliers of the chain as a percentile score with respect to all X-ray entries followed by that with respect to entries of similar resolution. The Analysed column shows the number of residues for which the sidechain conformation was analysed, and the total number of residues.

Mol	Chain	Analysed	Rotameric	Outliers	Percentiles
1	A	232/255 (91%)	191 (82%)	41 (18%)	3 8

All (41) residues with a non-rotameric sidechain are listed below:

Mol	Chain	Res	Type
1	A	5	THR
1	A	6	ARG
1	A	13	LYS
1	A	16	ARG
1	A	18	SER
1	A	27	ARG
1	A	32	ILE
1	A	36	THR
1	A	38	ARG
1	A	40	ILE
1	A	44	GLU
1	A	51	LEU
1	A	52	ARG
1	A	54	ARG
1	A	66	VAL
1	A	78	GLU
1	A	97	ARG
1	A	117	ASP
1	A	148	SER
1	A	157	VAL
1	A	183	ARG
1	A	185	VAL
1	A	197	GLN
1	A	198	ARG
1	A	203	GLU
1	A	205	SER
1	A	206	LYS
1	A	216	ARG
1	A	229	ILE
1	A	232	HIS
1	A	238	LEU
1	A	239	ASP
1	A	240	GLU
1	A	244	LEU
1	A	250	ARG
1	A	253	ILE
1	A	267	MET
1	A	269	SER
1	A	270	SER
1	A	276	GLU
1	A	278	MET

Some sidechains can be flipped to improve hydrogen bonding and reduce clashes. All (1) such sidechains are listed below:

Mol	Chain	Res	Type
1	A	141	GLN

### 5.3.3 RNA ⓘ

There are no RNA chains in this entry.

## 5.4 Non-standard residues in protein, DNA, RNA chains ⓘ

There are no non-standard protein/DNA/RNA residues in this entry.

## 5.5 Carbohydrates ⓘ

There are no carbohydrates in this entry.

## 5.6 Ligand geometry ⓘ

3 ligands are modelled in this entry.

In the following table, the Counts columns list the number of bonds (or angles) for which Mogul statistics could be retrieved, the number of bonds (or angles) that are observed in the model and the number of bonds (or angles) that are defined in the chemical component dictionary. The Link column lists molecule types, if any, to which the group is linked. The Z score for a bond length (or angle) is the number of standard deviations the observed value is removed from the expected value. A bond length (or angle) with  $|Z| > 2$  is considered an outlier worth inspection. RMSZ is the root-mean-square of all Z scores of the bond lengths (or angles).

Mol	Type	Chain	Res	Link	Bond lengths			Bond angles		
					Counts	RMSZ	$\# Z  > 2$	Counts	RMSZ	$\# Z  > 2$
3	TLA	A	410	-	9,9,9	0.71	0	12,12,12	1.68	4 (33%)
3	TLA	A	411	-	9,9,9	0.88	0	12,12,12	1.68	4 (33%)
2	PRT	A	500	1	47,47,47	4.33	22 (46%)	73,75,75	4.54	32 (43%)

In the following table, the Chirals column lists the number of chiral outliers, the number of chiral centers analysed, the number of these observed in the model and the number defined in the chemical component dictionary. Similar counts are reported in the Torsion and Rings columns. '-' means no outliers of that kind were identified.

Mol	Type	Chain	Res	Link	Chirals	Torsions	Rings
3	TLA	A	410	-	-	0/12/12/12	0/0/0/0
3	TLA	A	411	-	-	0/12/12/12	0/0/0/0
2	PRT	A	500	1	4/4/12/12	0/30/64/64	0/2/4/4

All (22) bond length outliers are listed below:

Mol	Chain	Res	Type	Atoms	Z	Observed(Å)	Ideal(Å)
2	A	500	PRT	C12-C11	-13.35	1.34	1.53
2	A	500	PRT	C2'-C1'	-10.32	1.38	1.53
2	A	500	PRT	O12-C12	-8.59	1.22	1.43
2	A	500	PRT	O13-C13	-8.36	1.22	1.43
2	A	500	PRT	C3'-C4'	-7.95	1.31	1.53
2	A	500	PRT	C13-C12	-7.26	1.33	1.53
2	A	500	PRT	C13-C14	-7.01	1.33	1.53
2	A	500	PRT	O2'-C2'	-6.77	1.26	1.43
2	A	500	PRT	O3'-C3'	-6.69	1.26	1.43
2	A	500	PRT	C1'-N9	-5.54	1.31	1.48
2	A	500	PRT	C15-C14	-5.14	1.34	1.51
2	A	500	PRT	C2'-C3'	-4.51	1.40	1.53
2	A	500	PRT	C5-C4	3.93	1.49	1.40
2	A	500	PRT	C2-N3	3.92	1.37	1.30
2	A	500	PRT	C6-C5	3.88	1.49	1.39
2	A	500	PRT	O4'-C1'	3.57	1.46	1.41
2	A	500	PRT	C11-N1	-3.21	1.38	1.48
2	A	500	PRT	O14-C11	2.96	1.45	1.41
2	A	500	PRT	PB-O3A	2.67	1.65	1.60
2	A	500	PRT	C6-N6	2.52	1.36	1.28
2	A	500	PRT	PA-O3A	2.42	1.65	1.60
2	A	500	PRT	PA-O1A	2.22	1.53	1.48

All (40) bond angle outliers are listed below:

Mol	Chain	Res	Type	Atoms	Z	Observed(°)	Ideal(°)
2	A	500	PRT	O4'-C1'-N9	23.24	130.06	108.44
2	A	500	PRT	C4'-O4'-C1'	-16.72	91.59	109.75
2	A	500	PRT	C14-O14-C11	-11.42	97.34	109.75
2	A	500	PRT	O3'-C3'-C2'	7.33	135.68	111.83
2	A	500	PRT	C12-C11-N1	7.17	131.72	113.26
2	A	500	PRT	N3-C4-N9	5.92	136.12	125.43
2	A	500	PRT	O1G-PG-O3G	5.35	125.03	112.73
2	A	500	PRT	C13-C12-C11	5.08	108.86	100.91
2	A	500	PRT	C1'-N9-C4	-4.90	118.17	126.64
2	A	500	PRT	O14-C11-N1	4.80	118.18	108.06

*Continued on next page...*

*Continued from previous page...*

Mol	Chain	Res	Type	Atoms	Z	Observed(°)	Ideal(°)
2	A	500	PRT	C2'-C1'-N9	4.64	125.17	113.27
2	A	500	PRT	O2'-C2'-C3'	4.48	126.40	111.83
2	A	500	PRT	O2G-PG-O1G	-4.45	103.23	112.88
2	A	500	PRT	O12-C12-C11	4.37	124.45	111.23
2	A	500	PRT	O13-C13-C14	4.12	123.22	111.08
2	A	500	PRT	O2'-C2'-C1'	3.89	123.00	111.23
2	A	500	PRT	O4'-C4'-C3'	3.78	112.84	105.17
2	A	500	PRT	C8-N9-C4	3.77	109.78	106.90
3	A	411	TLA	O11-C1-O1	-3.49	116.17	124.07
2	A	500	PRT	O14-C14-C15	3.46	121.72	109.36
2	A	500	PRT	O15-C15-C14	3.32	121.11	108.94
2	A	500	PRT	O13-C13-C12	3.14	122.05	111.83
2	A	500	PRT	O3'-C3'-C4'	3.13	120.31	111.08
3	A	410	TLA	O41-C4-C3	3.09	122.91	113.89
2	A	500	PRT	O4'-C4'-C5'	3.08	120.37	109.36
2	A	500	PRT	C15-C14-C13	3.05	127.45	115.21
2	A	500	PRT	C6-N1-C11	-2.92	117.15	120.53
2	A	500	PRT	C3'-C2'-C1'	2.87	105.41	100.91
2	A	500	PRT	C5-C4-N3	-2.84	119.51	125.70
2	A	500	PRT	O12-C12-C13	2.76	120.80	111.83
2	A	500	PRT	C12-C13-C14	2.70	108.03	102.65
2	A	500	PRT	C2-N3-C4	2.69	120.83	116.23
3	A	411	TLA	O41-C4-C3	2.64	121.58	113.89
3	A	410	TLA	O3-C3-C4	2.54	116.17	110.73
3	A	410	TLA	O41-C4-O4	-2.42	118.60	124.07
3	A	411	TLA	O41-C4-O4	-2.41	118.62	124.07
2	A	500	PRT	O1P-P-O3P	-2.30	107.88	112.88
2	A	500	PRT	O1P-P-O2P	2.28	117.98	112.73
3	A	411	TLA	O11-C1-C2	2.13	120.10	113.89
3	A	410	TLA	O11-C1-C2	2.11	120.03	113.89

All (4) chirality outliers are listed below:

Mol	Chain	Res	Type	Atom
2	A	500	PRT	C14
2	A	500	PRT	C11
2	A	500	PRT	C1'
2	A	500	PRT	C3'

There are no torsion outliers.

There are no ring outliers.

## 5.7 Other polymers ⓘ

There are no such residues in this entry.

## 5.8 Polymer linkage issues

There are no chain breaks in this entry.

## 6 Fit of model and data ⓘ

### 6.1 Protein, DNA and RNA chains ⓘ

EDS was not executed - this section will therefore be empty.

### 6.2 Non-standard residues in protein, DNA, RNA chains ⓘ

EDS was not executed - this section will therefore be empty.

### 6.3 Carbohydrates ⓘ

EDS was not executed - this section will therefore be empty.

### 6.4 Ligands ⓘ

EDS was not executed - this section will therefore be empty.

### 6.5 Other polymers ⓘ

EDS was not executed - this section will therefore be empty.