



Full wwPDB X-ray Structure Validation Report

Feb 27, 2014 – 12:48 PM GMT

PDB ID : 2Q11
Title : Structure of BACE complexed to compound 1
Authors : Sharff, A.J.
Deposited on : 2007-05-23
Resolution : 2.40 Å(reported)

This is a full wwPDB validation report for a publicly released PDB entry.
We welcome your comments at validation@mail.wwpdb.org
A user guide is available at <http://wwpdb.org/ValidationPDFNotes.html>

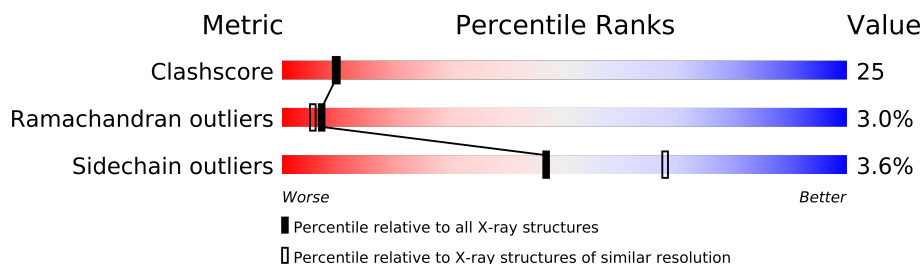
The following versions of software and data (see [references](#)) were used in the production of this report:

MolProbity : 4.02b-467
Mogul : 1.15 2013
Xtriage (Phenix) : **NOT EXECUTED**
EDS : **NOT EXECUTED**
Percentile statistics : 21963
Ideal geometry (proteins) : Engh & Huber (2001)
Ideal geometry (DNA, RNA) : Parkinson et. al. (1996)
Validation Pipeline (wwPDB-VP) : stable22683

1 Overall quality at a glance

The reported resolution of this entry is 2.40 Å.

Percentile scores (ranging between 0-100) for global validation metrics of the entry are shown in the following graphic. The table shows the number of entries on which the scores are based.



Metric	Whole archive (#Entries)	Similar resolution (#Entries, resolution range(Å))
Clashscore	79885	2789 (2.40-2.40)
Ramachandran outliers	78287	2736 (2.40-2.40)
Sidechain outliers	78261	2737 (2.40-2.40)

The table below summarises the geometric issues observed across the polymeric chains and their fit to the electron density. The red, orange, yellow and green segments on the lower bar indicate the fraction of residues that contain outliers for ≥ 3 , 2, 1 and 0 types of geometric quality criteria. The upper red bar (where present) indicates the fraction of residues that have poor fit to the electron density.

Note EDS was not executed.

Mol	Chain	Length	Quality of chain
1	A	388	
1	B	388	
1	C	388	

2 Entry composition

There are 3 unique types of molecules in this entry. The entry contains 9647 atoms, of which 0 are hydrogen and 0 are deuterium.

In the tables below, the ZeroOcc column contains the number of atoms modelled with zero occupancy, the AltConf column contains the number of residues with at least one atom in alternate conformation and the Trace column contains the number of residues modelled with at most 2 atoms.

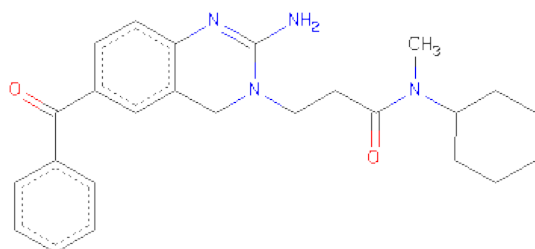
- Molecule 1 is a protein called Beta-secretase 1.

Mol	Chain	Residues	Atoms					ZeroOcc	AltConf	Trace
1	A	388	Total	C	N	O	S	164	0	0
			3049	1952	505	578	14			
1	B	388	Total	C	N	O	S	164	0	0
			3053	1955	506	578	14			
1	C	388	Total	C	N	O	S	164	0	0
			3045	1950	504	577	14			

There are 12 discrepancies between the modelled and reference sequences:

Chain	Residue	Modelled	Actual	Comment	Reference
A	92	GLN	ASN	ENGINEERED	UNP P56817
A	111	GLN	ASN	ENGINEERED	UNP P56817
A	162	GLN	ASN	ENGINEERED	UNP P56817
A	293	GLN	ASN	ENGINEERED	UNP P56817
B	92	GLN	ASN	ENGINEERED	UNP P56817
B	111	GLN	ASN	ENGINEERED	UNP P56817
B	162	GLN	ASN	ENGINEERED	UNP P56817
B	293	GLN	ASN	ENGINEERED	UNP P56817
C	92	GLN	ASN	ENGINEERED	UNP P56817
C	111	GLN	ASN	ENGINEERED	UNP P56817
C	162	GLN	ASN	ENGINEERED	UNP P56817
C	293	GLN	ASN	ENGINEERED	UNP P56817

- Molecule 2 is 3-(2-AMINO-6-BENZOYLQUINAZOLIN-3(4H)-YL)-N-CYCLOHEXYL-N-METHYLPROPANAMIDE (three-letter code: XX4) (formula: C₂₅H₃₀N₄O₂).



Mol	Chain	Residues	Atoms				ZeroOcc	AltConf
2	A	1	Total	C	N	O	0	0
			31	25	4	2		
2	B	1	Total	C	N	O	0	0
			31	25	4	2		
2	C	1	Total	C	N	O	0	0
			31	25	4	2		

- Molecule 3 is water.

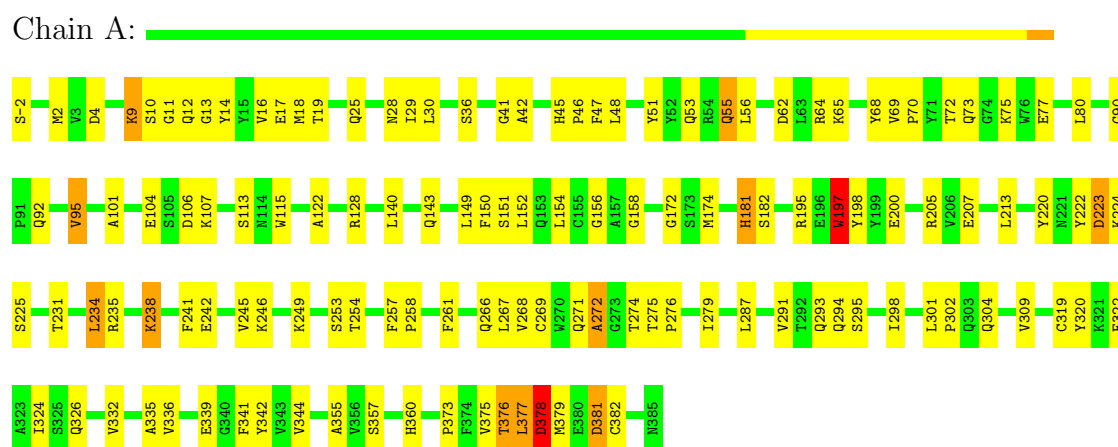
Mol	Chain	Residues	Atoms		ZeroOcc	AltConf
3	A	155	Total	O	0	0
			155	155		
3	B	123	Total	O	0	0
			123	123		
3	C	129	Total	O	0	0
			129	129		

3 Residue-property plots

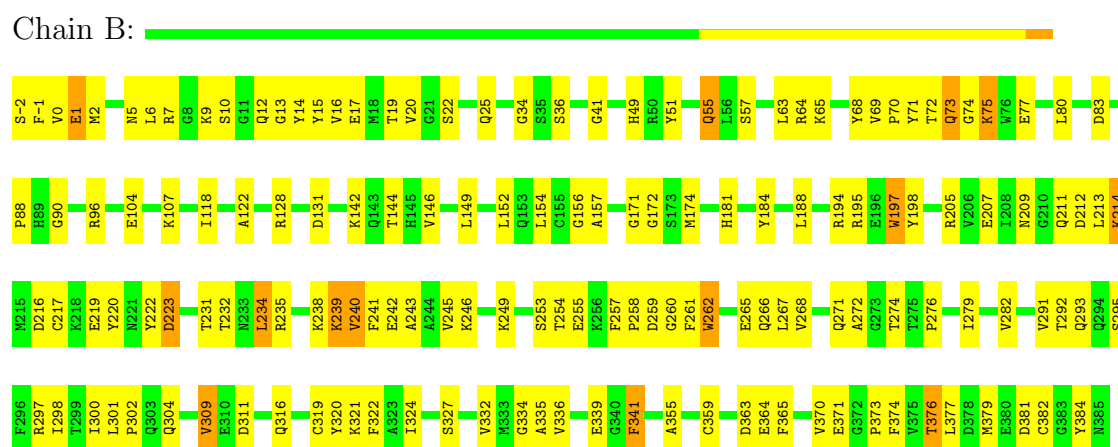
These plots are drawn for all protein, RNA and DNA chains in the entry. The first graphic for a chain summarises the proportions of errors displayed in the second graphic. The second graphic shows the sequence view annotated by issues in geometry and electron density. Residues are color-coded according to the number of geometric quality criteria for which they contain at least one outlier: green = 0, yellow = 1, orange = 2 and red = 3 or more. A red dot above a residue indicates a poor fit to the electron density ($RSRZ > 2$). Stretches of 2 or more consecutive residues without any outlier are shown as a green connector. Residues present in the sample, but not in the model, are shown in grey.

Note EDS was not executed.

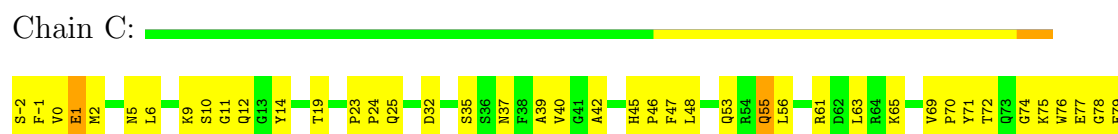
• Molecule 1: Beta-secretase 1



• Molecule 1: Beta-secretase 1



• Molecule 1: Beta-secretase 1





4 Data and refinement statistics

Xtrriage (Phenix) and EDS were not executed - this section will therefore be incomplete.

Property	Value	Source
Space group	C 1 2 1	Depositor
Cell constants a, b, c, α , β , γ	235.90Å 108.50Å 63.10Å 90.00° 102.94° 90.00°	Depositor
Resolution (Å)	500.00 – 2.40	Depositor
% Data completeness (in resolution range)	97.9 (500.00-2.40)	Depositor
R_{merge}	(Not available)	Depositor
R_{sym}	0.07	Depositor
Refinement program	CNS	Depositor
R, R_{free}	0.278 , 0.337	Depositor
Estimated twinning fraction	No twinning to report.	Xtrriage
Total number of atoms	9647	wwPDB-VP
Average B, all atoms (Å ²)	52.0	wwPDB-VP

5 Model quality

5.1 Standard geometry

Bond lengths and bond angles in the following residue types are not validated in this section: XX4

The Z score for a bond length (or angle) is the number of standard deviations the observed value is removed from the expected value. A bond length (or angle) with $|Z| > 5$ is considered an outlier worth inspection. RMSZ is the root-mean-square of all Z scores of the bond lengths (or angles).

Mol	Chain	Bond lengths		Bond angles	
		RMSZ	# Z >5	RMSZ	# Z >5
1	A	0.41	0/3127	0.68	2/4251 (0.0%)
1	B	0.37	0/3131	0.64	0/4255
1	C	0.39	0/3123	0.63	1/4246 (0.0%)
All	All	0.39	0/9381	0.65	3/12752 (0.0%)

There are no bond length outliers.

All (3) bond angle outliers are listed below:

Mol	Chain	Res	Type	Atoms	Z	Observed(°)	Ideal(°)
1	C	342	TYR	N-CA-C	-5.28	96.74	111.00
1	A	342	TYR	N-CA-C	-5.20	96.95	111.00
1	A	197	TRP	N-CA-C	-5.13	97.14	111.00

There are no chirality outliers.

There are no planarity outliers.

5.2 Close contacts

In the following table, the Non-H and H(model) columns list the number of non-hydrogen atoms and hydrogen atoms in the chain respectively. The H(added) column lists the number of hydrogens added by MolProbity. The Clashes column lists the number of clashes within the asymmetric unit, and the number in parentheses is this value normalized per 1000 atoms of the molecule in the chain. The Symm-Clashes column gives symmetry related clashes, in the same way as for the Clashes column.

Mol	Chain	Non-H	H(model)	H(added)	Clashes	Symm-Clashes
1	A	3049	0	2956	124	0
1	B	3053	0	2967	145	0
1	C	3045	0	2950	161	0

Continued on next page...

Continued from previous page...

Mol	Chain	Non-H	H(model)	H(added)	Clashes	Symm-Clashes
2	A	31	0	30	4	0
2	B	31	0	30	6	0
2	C	31	0	30	6	0
3	A	155	0	0	5	0
3	B	123	0	0	8	0
3	C	129	0	0	7	0
All	All	9647	0	8963	424	0

Clashscore is defined as the number of clashes calculated for the entry per 1000 atoms (including hydrogens) of the entry. The overall clashscore for this entry is 25.

All (424) close contacts within the same asymmetric unit are listed below.

Atom-1	Atom-2	Distance(Å)	Clash(Å)
1:C:267:LEU:HD22	1:C:309:VAL:HG21	1.32	1.09
1:B:301:LEU:H	1:B:304:GLN:NE2	1.70	0.89
1:B:276:PRO:O	1:B:279:ILE:HG12	1.77	0.84
1:C:75:LYS:HA	2:C:503:XX4:H18	1.60	0.83
1:A:9:LYS:HE2	1:A:11:GLY:H	1.43	0.82
1:A:267:LEU:HD13	1:A:319:CYS:HB3	1.61	0.82
1:A:276:PRO:O	1:A:279:ILE:HG12	1.78	0.81
1:B:188:LEU:HD23	1:B:355:ALA:HB2	1.63	0.80
1:C:235:ARG:HB2	1:C:332:VAL:HB	1.63	0.80
1:B:34:GLY:HA3	2:B:502:XX4:H252	1.47	0.79
1:B:376:THR:HG22	1:B:377:LEU:H	1.47	0.79
1:A:301:LEU:H	1:A:304:GLN:HE21	1.32	0.78
1:C:204:VAL:HG11	1:C:379:MET:HB3	1.66	0.78
1:B:359:CYS:HB3	3:B:547:HOH:O	1.85	0.76
1:B:5:ASN:HB3	3:B:597:HOH:O	1.85	0.76
1:C:241:PHE:O	1:C:245:VAL:HG23	1.86	0.76
1:C:55:GLN:NE2	1:C:56:LEU:HG	2.02	0.75
1:A:95:VAL:HG11	1:A:140:LEU:HA	1.69	0.75
1:C:267:LEU:HB3	1:C:321:LYS:HG2	1.67	0.75
1:A:9:LYS:CE	1:A:11:GLY:H	1.99	0.74
1:B:234:LEU:HB2	1:B:336:VAL:HG21	1.69	0.74
1:C:293:GLN:HE22	1:C:377:LEU:N	1.85	0.74
1:C:271:GLN:NE2	1:C:271:GLN:H	1.87	0.73
1:C:2:MET:HG2	1:C:90:GLY:HA2	1.71	0.72
1:B:9:LYS:O	1:B:12:GLN:N	2.21	0.72
1:C:309:VAL:HG11	1:C:321:LYS:HG3	1.72	0.72
1:B:77:GLU:HB2	1:B:104:GLU:HG2	1.72	0.72
1:B:241:PHE:O	1:B:245:VAL:HG23	1.89	0.72
1:B:301:LEU:HB3	1:B:302:PRO:HD2	1.71	0.70

Continued on next page...

Continued from previous page...

Atom-1	Atom-2	Distance(Å)	Clash(Å)
1:A:294:GLN:HG2	1:A:373:PRO:HB2	1.73	0.70
1:C:271:GLN:CD	1:C:271:GLN:H	1.94	0.70
1:C:276:PRO:O	1:C:279:ILE:HG12	1.92	0.70
1:C:69:VAL:HG22	1:C:128:ARG:HH11	1.57	0.70
1:C:242:GLU:O	1:C:246:LYS:HE2	1.92	0.69
1:B:267:LEU:HB2	1:B:320:TYR:O	1.93	0.68
1:A:70:PRO:HA	1:A:75:LYS:CB	2.24	0.68
1:A:213:LEU:HB3	1:A:220:TYR:OH	1.95	0.67
1:C:75:LYS:CA	2:C:503:XX4:H18	2.25	0.67
1:A:77:GLU:HB2	1:A:104:GLU:HG2	1.76	0.67
1:B:219:GLU:OE1	1:B:239:LYS:HD2	1.95	0.66
1:B:34:GLY:HA3	2:B:502:XX4:N25	2.09	0.66
1:C:294:GLN:HG2	1:C:373:PRO:HB2	1.76	0.66
1:A:267:LEU:HB2	1:A:320:TYR:O	1.95	0.66
1:A:377:LEU:O	1:A:378:ASP:HB2	1.96	0.66
1:C:298:ILE:HB	1:C:341:PHE:CZ	2.31	0.66
1:C:149:LEU:HD23	1:C:150:PHE:N	2.11	0.66
1:B:376:THR:HG22	1:B:377:LEU:N	2.10	0.65
1:C:69:VAL:HG22	1:C:128:ARG:NH1	2.10	0.65
1:B:261:PHE:HA	1:B:266:GLN:O	1.96	0.65
1:A:65:LYS:HG2	1:A:80:LEU:HD12	1.79	0.65
1:A:258:PRO:HG2	1:A:266:GLN:NE2	2.11	0.65
1:A:182:SER:HB3	1:B:63:LEU:HD23	1.78	0.65
1:C:277:TRP:CZ3	1:C:303:GLN:HG3	2.32	0.65
1:C:45:HIS:CE1	1:C:46:PRO:HG2	2.32	0.65
1:A:238:LYS:NZ	1:A:242:GLU:HG2	2.11	0.64
1:A:379:MET:O	1:A:382:CYS:SG	2.56	0.64
1:A:245:VAL:HG12	1:A:249:LYS:HE3	1.79	0.64
1:C:193:ILE:HG13	1:C:351:ARG:HA	1.79	0.64
1:C:238:LYS:NZ	1:C:242:GLU:HG3	2.12	0.64
1:A:293:GLN:CD	1:A:377:LEU:HD23	2.18	0.64
1:B:75:LYS:O	1:B:75:LYS:HD2	1.98	0.64
2:A:501:XX4:H081	2:A:501:XX4:H013	1.80	0.63
1:C:219:GLU:OE1	1:C:239:LYS:HD2	1.99	0.63
1:A:301:LEU:H	1:A:304:GLN:NE2	1.95	0.63
1:C:293:GLN:HE22	1:C:377:LEU:H	1.43	0.63
1:B:2:MET:HG2	1:B:90:GLY:HA2	1.79	0.63
1:B:22:SER:O	1:B:57:SER:HA	1.99	0.63
1:B:65:LYS:HG2	1:B:80:LEU:HD12	1.81	0.62
1:C:376:THR:HA	3:C:569:HOH:O	1.98	0.62
1:C:118:ILE:HD13	2:C:503:XX4:H21	1.81	0.62
1:B:271:GLN:CD	1:B:271:GLN:H	2.03	0.62

Continued on next page...

Continued from previous page...

Atom-1	Atom-2	Distance(Å)	Clash(Å)
1:B:267:LEU:HD22	1:B:309:VAL:HG21	1.80	0.62
1:B:15:TYR:HE1	3:B:607:HOH:O	1.82	0.62
1:B:260:GLY:C	1:B:266:GLN:HG2	2.19	0.62
1:B:260:GLY:HA3	1:B:266:GLN:HG2	1.82	0.62
1:A:41:GLY:O	1:A:51:TYR:HB2	2.00	0.62
1:B:75:LYS:C	1:B:75:LYS:HD2	2.19	0.61
1:C:213:LEU:HA	3:C:595:HOH:O	2.00	0.61
1:A:195:ARG:HD2	3:A:562:HOH:O	1.99	0.61
1:C:76:TRP:CE3	1:C:102:ILE:HG12	2.36	0.61
1:A:9:LYS:O	1:A:13:GLY:N	2.33	0.61
1:A:92:GLN:HG3	1:B:142:LYS:NZ	2.16	0.61
1:A:65:LYS:HE3	1:A:80:LEU:HD13	1.81	0.61
1:C:241:PHE:CD2	1:C:326:GLN:HB3	2.36	0.61
1:B:152:LEU:HD23	1:B:174:MET:HA	1.83	0.60
1:C:76:TRP:HA	1:C:105:SER:HA	1.83	0.60
1:C:119:LEU:HG	1:C:121:LEU:HD21	1.83	0.60
1:A:181:HIS:CD2	1:B:64:ARG:HH12	2.20	0.60
1:A:293:GLN:HG3	1:A:375:VAL:HG13	1.84	0.60
1:B:267:LEU:HB3	1:B:321:LYS:HG2	1.82	0.60
1:C:39:ALA:HB1	1:C:102:ILE:HD11	1.84	0.59
1:C:128:ARG:HG3	1:C:128:ARG:HH11	1.67	0.59
1:B:267:LEU:HD13	1:B:319:CYS:HB3	1.85	0.59
1:C:77:GLU:HG2	1:C:104:GLU:HB2	1.84	0.59
1:C:61:ARG:HB2	1:C:82:THR:OG1	2.03	0.59
1:B:231:THR:HG21	1:B:332:VAL:HG11	1.85	0.58
1:A:9:LYS:HE2	1:A:11:GLY:N	2.17	0.58
1:C:301:LEU:HB3	1:C:302:PRO:HD2	1.86	0.58
1:C:336:VAL:HG23	1:C:337:ILE:HD13	1.85	0.58
1:C:238:LYS:HZ1	1:C:242:GLU:HG3	1.67	0.58
1:A:72:THR:HG22	1:A:73:GLN:OE1	2.04	0.58
1:C:376:THR:O	1:C:377:LEU:HB2	2.04	0.58
1:B:235:ARG:HB2	1:B:332:VAL:HB	1.85	0.58
1:A:234:LEU:HB2	1:A:336:VAL:CG2	2.34	0.57
1:A:261:PHE:CD1	1:A:268:VAL:HG23	2.39	0.57
1:B:212:ASP:C	1:B:214:LYS:H	2.07	0.57
1:A:69:VAL:HG22	1:A:128:ARG:HG3	1.86	0.57
1:B:239:LYS:O	1:B:242:GLU:N	2.37	0.57
1:B:216:ASP:O	1:B:219:GLU:HB2	2.05	0.57
1:C:9:LYS:HG2	1:C:10:SER:H	1.69	0.57
1:A:152:LEU:HD23	1:A:174:MET:HA	1.86	0.57
1:A:242:GLU:O	1:A:246:LYS:HG2	2.05	0.57
1:B:262:TRP:HA	1:B:262:TRP:CE3	2.40	0.57

Continued on next page...

Continued from previous page...

Atom-1	Atom-2	Distance(Å)	Clash(Å)
1:B:253:SER:O	1:B:255:GLU:N	2.38	0.57
1:C:118:ILE:CD1	2:C:503:XX4:H21	2.35	0.57
1:B:-2:SER:HB3	1:B:-1:PHE:CD1	2.40	0.57
1:A:45:HIS:HB3	1:A:48:LEU:HD12	1.87	0.56
1:A:92:GLN:HG3	1:B:142:LYS:HZ2	1.70	0.56
1:B:371:GLU:HG2	3:B:596:HOH:O	2.06	0.56
1:A:261:PHE:HA	1:A:266:GLN:O	2.04	0.56
1:B:238:LYS:O	1:B:242:GLU:HG2	2.06	0.56
1:B:262:TRP:HA	1:B:262:TRP:HE3	1.71	0.56
1:C:264:GLY:O	1:C:265:GLU:C	2.43	0.56
1:C:9:LYS:HG2	1:C:10:SER:N	2.20	0.56
1:B:181:HIS:HA	1:B:184:TYR:CE1	2.41	0.56
1:B:341:PHE:HB3	1:B:355:ALA:O	2.06	0.56
1:A:335:ALA:O	1:A:339:GLU:HG3	2.06	0.55
1:C:293:GLN:OE1	1:C:377:LEU:HA	2.06	0.55
1:A:268:VAL:O	1:A:319:CYS:HA	2.06	0.55
1:B:73:GLN:O	1:B:107:LYS:HD2	2.07	0.55
1:B:258:PRO:HB2	1:B:266:GLN:NE2	2.21	0.55
1:B:20:VAL:O	1:B:25:GLN:HB2	2.07	0.55
1:C:128:ARG:HG3	1:C:128:ARG:NH1	2.21	0.55
1:A:53:GLN:HB3	1:A:55:GLN:HE22	1.71	0.55
1:B:156:GLY:HA3	1:B:339:GLU:OE2	2.07	0.55
1:B:301:LEU:H	1:B:304:GLN:HE22	1.52	0.55
1:A:257:PHE:HD2	1:A:268:VAL:HG21	1.72	0.55
1:B:75:LYS:HA	2:B:502:XX4:H18	1.89	0.55
1:A:45:HIS:CG	1:A:46:PRO:HD2	2.41	0.55
1:B:261:PHE:CD1	1:B:268:VAL:HG23	2.42	0.55
1:C:9:LYS:HE3	1:C:11:GLY:HA3	1.89	0.55
1:C:155:CYS:O	1:C:156:GLY:C	2.43	0.55
1:C:235:ARG:CB	1:C:332:VAL:HB	2.35	0.54
1:B:212:ASP:OD1	1:B:214:LYS:N	2.41	0.54
1:A:55:GLN:CD	1:A:55:GLN:H	2.10	0.54
1:C:270:TRP:HD1	1:C:271:GLN:HE22	1.56	0.54
1:A:241:PHE:O	1:A:245:VAL:HG23	2.06	0.54
1:A:181:HIS:CD2	1:B:64:ARG:NH1	2.75	0.54
1:B:195:ARG:HB3	1:B:197:TRP:NE1	2.22	0.54
1:A:267:LEU:HD22	1:A:309:VAL:HG21	1.87	0.54
1:A:113:SER:HB2	1:A:115:TRP:NE1	2.22	0.54
1:B:72:THR:C	1:B:73:GLN:HG3	2.27	0.54
1:B:239:LYS:O	1:B:240:VAL:C	2.46	0.54
1:B:267:LEU:CD2	1:B:309:VAL:HG21	2.37	0.54
1:A:13:GLY:HA3	1:A:30:LEU:HD11	1.90	0.54

Continued on next page...

Continued from previous page...

Atom-1	Atom-2	Distance(Å)	Clash(Å)
1:A:269:CYS:HA	1:A:319:CYS:HA	1.89	0.54
1:B:260:GLY:CA	1:B:266:GLN:HG2	2.37	0.54
1:A:62:ASP:O	1:C:182:SER:HA	2.07	0.54
1:C:362:HIS:HD2	1:C:363:ASP:O	1.91	0.53
1:C:242:GLU:O	1:C:246:LYS:HG2	2.09	0.53
1:C:301:LEU:H	1:C:304:GLN:NE2	2.06	0.53
1:B:195:ARG:HB3	1:B:197:TRP:CD1	2.43	0.53
1:A:113:SER:HB2	1:A:115:TRP:CD1	2.44	0.53
1:B:291:VAL:HG12	1:B:292:THR:N	2.23	0.53
1:C:272:ALA:O	1:C:274:THR:HG23	2.09	0.53
1:C:48:LEU:HD11	1:C:109:PHE:CE1	2.43	0.53
1:B:16:VAL:HG22	1:B:17:GLU:N	2.24	0.53
1:A:267:LEU:C	1:A:267:LEU:HD12	2.29	0.53
2:A:501:XX4:H271	2:A:501:XX4:O04	2.09	0.53
1:A:64:ARG:NH1	1:C:181:HIS:ND1	2.56	0.53
1:B:188:LEU:CD2	1:B:355:ALA:HB2	2.37	0.52
1:B:239:LYS:O	1:B:241:PHE:N	2.42	0.52
1:B:322:PHE:CZ	1:B:324:ILE:HB	2.44	0.52
1:B:75:LYS:CD	1:B:75:LYS:C	2.78	0.52
1:A:235:ARG:HB2	1:A:332:VAL:HB	1.90	0.52
1:C:32:ASP:OD2	1:C:118:ILE:HD11	2.10	0.52
1:B:72:THR:O	1:B:73:GLN:NE2	2.42	0.52
1:C:267:LEU:HD23	1:C:321:LYS:CE	2.40	0.52
1:C:376:THR:O	1:C:377:LEU:CB	2.56	0.52
1:A:107:LYS:HD3	3:A:640:HOH:O	2.09	0.52
1:C:225:SER:N	3:C:615:HOH:O	2.43	0.52
1:A:322:PHE:CZ	1:A:324:ILE:HB	2.45	0.52
1:C:212:ASP:OD1	1:C:214:LYS:N	2.35	0.52
1:C:271:GLN:NE2	1:C:271:GLN:N	2.54	0.52
1:A:301:LEU:HB3	1:A:302:PRO:HD2	1.92	0.51
1:C:377:LEU:O	1:C:378:ASP:O	2.28	0.51
1:C:375:VAL:O	1:C:375:VAL:HG12	2.11	0.51
1:C:71:TYR:CE2	2:C:503:XX4:H013	2.46	0.51
1:B:209:ASN:OD1	1:B:282:VAL:HG22	2.10	0.51
1:A:222:TYR:O	1:A:223:ASP:CB	2.58	0.51
1:A:14:TYR:CZ	1:A:154:LEU:HB3	2.46	0.51
1:C:55:GLN:HE22	1:C:56:LEU:HG	1.72	0.51
1:B:335:ALA:O	1:B:339:GLU:HG3	2.10	0.51
1:B:297:ARG:O	1:B:370:VAL:HA	2.11	0.51
1:A:293:GLN:HE21	1:A:375:VAL:HG13	1.75	0.51
1:C:234:LEU:HB2	1:C:336:VAL:CG2	2.41	0.51
1:B:197:TRP:CD1	1:B:197:TRP:N	2.77	0.51

Continued on next page...

Continued from previous page...

Atom-1	Atom-2	Distance(Å)	Clash(Å)
1:C:110:ILE:HB	1:C:113:SER:HB3	1.93	0.51
1:C:372:GLY:HA2	1:C:374:PHE:CE1	2.45	0.51
1:B:276:PRO:CG	1:B:279:ILE:HD13	2.41	0.50
1:B:271:GLN:HB2	1:B:274:THR:OG1	2.11	0.50
1:C:72:THR:C	1:C:74:GLY:H	2.15	0.50
1:C:222:TYR:O	1:C:223:ASP:CB	2.59	0.50
1:C:205:ARG:HB3	1:C:286:TYR:HB2	1.93	0.50
1:C:53:GLN:HB2	1:C:56:LEU:HD12	1.94	0.50
1:A:234:LEU:HB2	1:A:336:VAL:HG22	1.92	0.50
1:C:179:ILE:HD11	1:C:344:VAL:HG11	1.94	0.50
1:C:149:LEU:C	1:C:149:LEU:HD23	2.32	0.50
1:B:222:TYR:O	1:B:223:ASP:CB	2.59	0.50
1:A:267:LEU:HD22	1:A:309:VAL:CG2	2.41	0.50
1:B:238:LYS:HE3	1:B:242:GLU:OE1	2.12	0.50
1:C:14:TYR:CZ	1:C:154:LEU:HB3	2.47	0.50
1:B:234:LEU:HB2	1:B:336:VAL:CG2	2.39	0.50
1:B:257:PHE:HD2	1:B:268:VAL:HG21	1.77	0.50
1:B:73:GLN:OE1	1:B:107:LYS:HD2	2.12	0.50
1:C:9:LYS:HE3	1:C:11:GLY:CA	2.42	0.50
1:B:295:SER:O	1:B:373:PRO:HA	2.12	0.50
1:B:231:THR:O	1:B:334:GLY:HA3	2.12	0.49
1:C:207:GLU:O	1:C:208:ILE:HD13	2.12	0.49
1:A:9:LYS:HE2	1:A:10:SER:N	2.27	0.49
1:A:151:SER:HB3	1:A:344:VAL:HG22	1.94	0.49
1:B:298:ILE:HB	1:B:341:PHE:CZ	2.47	0.49
1:C:298:ILE:HD12	1:C:341:PHE:CE1	2.48	0.49
1:C:106:ASP:OD2	1:C:107:LYS:HD2	2.13	0.49
1:B:205:ARG:NH2	1:B:207:GLU:OE2	2.40	0.49
1:B:301:LEU:H	1:B:304:GLN:HE21	1.51	0.49
1:B:235:ARG:CZ	1:B:327:SER:HB2	2.43	0.49
1:C:42:ALA:CB	1:C:101:ALA:HB1	2.43	0.49
1:C:65:LYS:N	3:C:580:HOH:O	2.45	0.49
1:A:341:PHE:HB3	1:A:355:ALA:O	2.13	0.49
1:B:77:GLU:HB2	1:B:104:GLU:CG	2.40	0.49
1:C:119:LEU:HG	1:C:121:LEU:CD2	2.43	0.49
1:A:73:GLN:O	1:A:107:LYS:HD2	2.13	0.49
1:C:5:ASN:HB3	3:C:620:HOH:O	2.13	0.49
1:A:68:TYR:CD1	1:A:77:GLU:HG2	2.48	0.48
1:C:79:GLU:HB3	3:C:532:HOH:O	2.13	0.48
1:A:45:HIS:HE1	1:A:47:PHE:CD1	2.31	0.48
1:B:10:SER:C	1:B:13:GLY:H	2.16	0.48
1:A:95:VAL:HG12	1:A:143:GLN:HB2	1.95	0.48

Continued on next page...

Continued from previous page...

Atom-1	Atom-2	Distance(Å)	Clash(Å)
1:C:-1:PHE:CZ	1:C:178:GLY:HA3	2.48	0.48
1:C:318:ASP:HB3	1:C:320:TYR:OH	2.14	0.48
1:A:377:LEU:O	1:A:378:ASP:CB	2.60	0.48
1:C:188:LEU:HD23	1:C:355:ALA:HB2	1.94	0.48
1:C:204:VAL:CG1	1:C:379:MET:HB3	2.41	0.48
1:C:260:GLY:HA3	1:C:266:GLN:OE1	2.14	0.48
1:C:80:LEU:HD11	1:C:129:PRO:HD3	1.96	0.48
1:B:276:PRO:HG2	1:B:279:ILE:CD1	2.44	0.48
1:A:257:PHE:CD2	1:A:268:VAL:HG21	2.48	0.48
1:C:267:LEU:HD23	1:C:321:LYS:HE3	1.96	0.47
1:B:242:GLU:O	1:B:246:LYS:HG2	2.14	0.47
1:C:234:LEU:HG	1:C:337:ILE:HD11	1.96	0.47
1:C:63:LEU:HB2	1:C:80:LEU:O	2.14	0.47
1:C:277:TRP:O	1:C:366:ARG:NH2	2.47	0.47
1:A:246:LYS:HD3	1:A:249:LYS:HZ2	1.79	0.47
1:B:231:THR:HG21	1:B:332:VAL:CG1	2.43	0.47
1:B:194:ARG:NH2	1:B:384:TYR:O	2.44	0.47
1:C:76:TRP:O	1:C:77:GLU:HB3	2.14	0.47
1:B:83:ASP:O	1:B:96:ARG:HA	2.13	0.47
1:B:249:LYS:HE2	1:B:262:TRP:CD1	2.49	0.47
1:C:238:LYS:O	1:C:242:GLU:HG2	2.15	0.47
1:B:309:VAL:HG11	1:B:321:LYS:HE3	1.96	0.47
1:A:379:MET:N	1:A:381:ASP:OD1	2.48	0.47
1:B:300:ILE:HB	1:B:304:GLN:HE21	1.79	0.47
1:C:238:LYS:HD3	1:C:238:LYS:C	2.36	0.47
1:B:295:SER:OG	1:B:374:PHE:HB2	2.14	0.47
1:C:235:ARG:CG	1:C:332:VAL:HB	2.45	0.47
1:A:298:ILE:HB	1:A:341:PHE:CZ	2.50	0.47
1:C:335:ALA:O	1:C:339:GLU:HG3	2.15	0.47
1:C:-2:SER:HB3	1:C:180:ASP:OD1	2.15	0.47
1:C:1:GLU:H	1:C:1:GLU:HG3	1.28	0.47
1:A:149:LEU:HD23	1:A:150:PHE:N	2.30	0.47
1:A:9:LYS:O	1:A:12:GLN:N	2.46	0.46
1:A:293:GLN:HE21	1:A:375:VAL:CG1	2.28	0.46
1:B:0:VAL:HG23	1:B:1:GLU:N	2.31	0.46
1:B:276:PRO:HG2	1:B:279:ILE:HD13	1.97	0.46
1:C:128:ARG:O	1:C:133:LEU:HD23	2.16	0.46
1:A:376:THR:O	1:A:377:LEU:O	2.34	0.46
1:A:271:GLN:O	1:A:272:ALA:C	2.54	0.46
1:C:271:GLN:CD	1:C:271:GLN:N	2.66	0.46
1:B:257:PHE:N	1:B:257:PHE:CD1	2.84	0.46
1:C:234:LEU:HB2	1:C:336:VAL:HG21	1.98	0.46

Continued on next page...

Continued from previous page...

Atom-1	Atom-2	Distance(Å)	Clash(Å)
1:B:68:TYR:O	1:B:68:TYR:CD1	2.69	0.46
1:C:9:LYS:HE2	1:C:12:GLN:N	2.31	0.46
1:A:28:ASN:HB2	1:A:115:TRP:HA	1.97	0.46
1:C:78:GLY:HA3	1:C:101:ALA:O	2.15	0.46
1:A:9:LYS:HZ1	1:A:11:GLY:HA3	1.81	0.45
1:B:341:PHE:CD1	1:B:341:PHE:N	2.83	0.45
1:B:72:THR:O	1:B:73:GLN:HG3	2.16	0.45
1:C:193:ILE:HG13	1:C:351:ARG:CA	2.46	0.45
1:B:197:TRP:CG	1:B:198:TYR:N	2.81	0.45
1:A:149:LEU:C	1:A:149:LEU:HD23	2.35	0.45
1:A:45:HIS:HB3	1:A:48:LEU:CD1	2.46	0.45
1:B:297:ARG:NH2	1:B:371:GLU:OE2	2.46	0.45
1:A:64:ARG:NH1	1:C:181:HIS:CE1	2.85	0.45
1:A:75:LYS:N	2:A:501:XX4:H18	2.32	0.45
1:B:74:GLY:O	1:B:75:LYS:HB3	2.16	0.45
1:C:234:LEU:CD1	1:C:337:ILE:HD11	2.47	0.45
1:A:322:PHE:CE2	1:A:324:ILE:HB	2.52	0.45
1:A:2:MET:HG2	1:A:90:GLY:HA2	1.99	0.45
1:C:235:ARG:HB2	1:C:332:VAL:CB	2.42	0.45
1:A:376:THR:O	1:A:377:LEU:C	2.54	0.45
1:C:193:ILE:O	1:C:350:LYS:HE2	2.17	0.45
1:B:379:MET:O	1:B:382:CYS:SG	2.74	0.45
1:B:69:VAL:HG22	1:B:128:ARG:HG3	1.98	0.45
1:C:277:TRP:CE3	1:C:303:GLN:HG3	2.52	0.45
1:C:53:GLN:HB3	1:C:55:GLN:NE2	2.32	0.45
1:A:241:PHE:CE2	1:A:326:GLN:NE2	2.85	0.45
1:A:53:GLN:CB	1:A:56:LEU:HD12	2.47	0.45
1:C:9:LYS:HE3	1:C:11:GLY:H	1.82	0.44
1:A:9:LYS:C	1:A:9:LYS:HE2	2.38	0.44
1:B:373:PRO:HG3	3:B:585:HOH:O	2.17	0.44
1:A:294:GLN:CG	1:A:373:PRO:HB2	2.43	0.44
1:A:293:GLN:HE22	1:A:377:LEU:HA	1.82	0.44
1:B:17:GLU:O	1:B:88:PRO:HD2	2.17	0.44
1:A:291:VAL:HG23	3:A:568:HOH:O	2.18	0.44
1:B:6:LEU:HB2	1:B:172:GLY:H	1.82	0.44
1:C:213:LEU:HD12	1:C:213:LEU:HA	1.76	0.44
1:A:36:SER:OG	1:A:122:ALA:HB3	2.18	0.44
1:A:357:SER:HB3	1:A:360:HIS:HB3	1.99	0.44
1:C:128:ARG:O	1:C:133:LEU:CD2	2.66	0.44
1:C:333:MET:HE2	1:C:337:ILE:HG21	1.99	0.44
1:C:379:MET:O	1:C:382:CYS:SG	2.75	0.44
1:B:75:LYS:NZ	1:B:104:GLU:HG3	2.32	0.44

Continued on next page...

Continued from previous page...

Atom-1	Atom-2	Distance(Å)	Clash(Å)
1:A:246:LYS:O	1:A:249:LYS:HB2	2.18	0.44
1:C:213:LEU:HD11	1:C:243:ALA:O	2.18	0.44
1:A:234:LEU:HB2	1:A:336:VAL:HG21	2.00	0.44
1:B:19:THR:HA	1:B:25:GLN:O	2.17	0.44
1:A:287:LEU:O	1:A:295:SER:HB2	2.17	0.44
1:A:106:ASP:O	1:A:107:LYS:HB2	2.17	0.44
1:C:363:ASP:OD1	1:C:365:PHE:N	2.50	0.44
1:B:363:ASP:OD1	1:B:365:PHE:N	2.44	0.44
1:C:55:GLN:HE21	1:C:56:LEU:HG	1.80	0.43
1:B:71:TYR:HB2	2:B:502:XX4:C19	2.48	0.43
1:C:53:GLN:HB3	1:C:55:GLN:HE22	1.84	0.43
1:A:16:VAL:HG22	1:A:17:GLU:N	2.33	0.43
1:B:363:ASP:OD1	1:B:364:GLU:N	2.52	0.43
1:C:261:PHE:C	1:C:263:LEU:H	2.22	0.43
1:B:55:GLN:OE1	1:B:55:GLN:N	2.44	0.43
1:A:19:THR:HA	1:A:25:GLN:O	2.18	0.43
1:C:80:LEU:HA	1:C:80:LEU:HD23	1.83	0.43
1:C:217:CYS:HA	1:C:220:TYR:CD1	2.53	0.43
1:B:217:CYS:HA	1:B:220:TYR:CD1	2.54	0.43
1:C:301:LEU:H	1:C:304:GLN:HE21	1.65	0.43
1:C:0:VAL:HG23	1:C:1:GLU:N	2.33	0.43
1:B:188:LEU:HD23	1:B:355:ALA:CB	2.41	0.43
1:B:258:PRO:HG2	1:B:266:GLN:NE2	2.33	0.43
1:C:258:PRO:C	1:C:260:GLY:H	2.22	0.43
1:B:65:LYS:CG	1:B:80:LEU:HD12	2.49	0.43
1:C:77:GLU:CG	1:C:104:GLU:HB2	2.47	0.43
1:B:249:LYS:HG2	1:B:262:TRP:HE1	1.84	0.43
1:B:293:GLN:O	1:B:293:GLN:HG3	2.19	0.43
1:A:224:LYS:NZ	3:A:596:HOH:O	2.52	0.43
1:C:234:LEU:HD12	1:C:337:ILE:HD11	2.01	0.43
1:B:36:SER:OG	1:B:122:ALA:HB3	2.19	0.43
1:A:258:PRO:HG2	1:A:266:GLN:HE21	1.80	0.42
1:B:118:ILE:HD11	2:B:502:XX4:H21	2.01	0.42
1:C:271:GLN:O	1:C:272:ALA:C	2.57	0.42
1:C:301:LEU:HD11	1:C:367:THR:HA	2.01	0.42
1:B:222:TYR:O	1:B:223:ASP:HB3	2.18	0.42
1:A:293:GLN:HA	1:A:379:MET:HE3	2.02	0.42
1:A:197:TRP:CG	1:A:198:TYR:N	2.87	0.42
1:C:307:ARG:HA	1:C:308:PRO:HD3	1.87	0.42
1:B:118:ILE:CD1	2:B:502:XX4:H21	2.50	0.42
1:B:212:ASP:C	1:B:214:LYS:N	2.73	0.42
1:C:6:LEU:HB2	1:C:172:GLY:C	2.40	0.42

Continued on next page...

Continued from previous page...

Atom-1	Atom-2	Distance(Å)	Clash(Å)
1:A:205:ARG:NH2	1:A:207:GLU:OE2	2.53	0.42
1:B:213:LEU:O	1:B:214:LYS:C	2.57	0.42
1:A:238:LYS:HD3	1:A:238:LYS:C	2.40	0.42
1:B:213:LEU:HD11	1:B:243:ALA:HB1	2.02	0.42
1:C:216:ASP:OD1	1:C:218:LYS:HB2	2.20	0.42
1:A:274:THR:O	1:A:275:THR:C	2.57	0.42
1:A:268:VAL:CG1	1:A:269:CYS:N	2.83	0.42
1:B:73:GLN:OE1	1:B:107:LYS:CD	2.67	0.42
1:C:374:PHE:O	1:C:376:THR:N	2.49	0.42
1:B:258:PRO:O	1:B:259:ASP:C	2.56	0.42
1:A:246:LYS:CD	1:A:249:LYS:HZ2	2.33	0.42
1:A:18:MET:SD	1:A:29:ILE:HG13	2.59	0.42
1:B:7:ARG:O	1:B:14:TYR:HA	2.19	0.42
1:A:9:LYS:NZ	1:A:11:GLY:HA3	2.35	0.41
1:C:213:LEU:HD12	3:C:595:HOH:O	2.20	0.41
1:C:19:THR:HA	1:C:25:GLN:O	2.20	0.41
1:B:144:THR:OG1	1:B:146:VAL:HG23	2.20	0.41
1:C:75:LYS:N	2:C:503:XX4:H18	2.36	0.41
1:B:376:THR:CG2	1:B:377:LEU:H	2.16	0.41
1:C:277:TRP:CH2	1:C:303:GLN:HG3	2.55	0.41
1:A:238:LYS:HZ2	1:A:242:GLU:HG2	1.85	0.41
1:B:232:THR:HA	3:B:583:HOH:O	2.20	0.41
1:B:154:LEU:O	1:B:339:GLU:HA	2.20	0.41
1:C:32:ASP:OD2	1:C:35:SER:OG	2.34	0.41
1:C:77:GLU:N	1:C:104:GLU:O	2.53	0.41
1:C:110:ILE:HD12	1:C:115:TRP:HZ2	1.85	0.41
1:C:23:PRO:HA	1:C:24:PRO:HD3	1.90	0.41
1:B:72:THR:O	1:B:74:GLY:N	2.53	0.41
1:C:293:GLN:HG3	1:C:375:VAL:HG13	2.03	0.41
1:C:282:VAL:HB	1:C:299:THR:CG2	2.51	0.41
1:C:47:PHE:HD1	1:C:109:PHE:O	2.02	0.41
1:A:231:THR:OG1	2:A:501:XX4:H052	2.21	0.41
1:B:211:GLN:HG2	3:B:579:HOH:O	2.20	0.41
1:C:270:TRP:HH2	1:C:280:PHE:HZ	1.69	0.41
1:C:37:ASN:HD21	1:C:133:LEU:HD23	1.85	0.41
1:A:241:PHE:CD2	1:A:326:GLN:HB3	2.55	0.41
1:C:225:SER:OG	1:C:331:THR:HB	2.21	0.41
1:C:258:PRO:C	1:C:260:GLY:N	2.73	0.41
1:B:241:PHE:O	1:B:242:GLU:C	2.59	0.41
1:A:200:GLU:HA	1:A:225:SER:O	2.21	0.41
1:A:253:SER:O	1:A:254:THR:C	2.60	0.41
1:A:195:ARG:HH11	1:A:195:ARG:HG2	1.85	0.40

Continued on next page...

Continued from previous page...

Atom-1	Atom-2	Distance(Å)	Clash(Å)
1:B:41:GLY:O	1:B:51:TYR:HB2	2.21	0.40
1:C:124:ALA:O	1:C:131:ASP:HA	2.21	0.40
1:A:268:VAL:HG12	1:A:269:CYS:N	2.35	0.40
1:C:45:HIS:CG	1:C:46:PRO:HD2	2.56	0.40
1:A:246:LYS:NZ	3:A:522:HOH:O	2.55	0.40
1:B:231:THR:C	3:B:583:HOH:O	2.58	0.40
1:A:4:ASP:HA	1:A:172:GLY:O	2.21	0.40
1:C:271:GLN:HB2	1:C:274:THR:HG21	2.03	0.40
1:A:267:LEU:CD2	1:A:309:VAL:HG21	2.50	0.40
1:C:271:GLN:O	1:C:274:THR:OG1	2.40	0.40
1:B:235:ARG:CB	1:B:332:VAL:HB	2.51	0.40
1:C:234:LEU:CG	1:C:337:ILE:HD11	2.51	0.40
1:B:-1:PHE:CD1	1:B:-1:PHE:N	2.89	0.40
1:C:14:TYR:CD1	1:C:154:LEU:HD22	2.56	0.40
1:A:42:ALA:CB	1:A:101:ALA:HB1	2.52	0.40
1:B:258:PRO:CB	1:B:266:GLN:NE2	2.84	0.40
1:C:228:ASP:C	1:C:230:GLY:H	2.25	0.40

There are no symmetry-related clashes.

5.3 Torsion angles

5.3.1 Protein backbone ⓘ

In the following table, the Percentiles column shows the percent Ramachandran outliers of the chain as a percentile score with respect to all X-ray entries followed by that with respect to entries of similar resolution. The Analysed column shows the number of residues for which the backbone conformation was analysed, and the total number of residues.

Mol	Chain	Analysed	Favoured	Allowed	Outliers	Percentiles	
1	A	386/388 (100%)	343 (89%)	37 (10%)	6 (2%)	14	18
1	B	386/388 (100%)	328 (85%)	42 (11%)	16 (4%)	4	3
1	C	386/388 (100%)	340 (88%)	33 (8%)	13 (3%)	6	4
All	All	1158/1164 (100%)	1011 (87%)	112 (10%)	35 (3%)	7	5

All (35) Ramachandran outliers are listed below:

Mol	Chain	Res	Type
1	A	223	ASP
1	A	377	LEU

Continued on next page...

Continued from previous page...

Mol	Chain	Res	Type
1	B	157	ALA
1	B	223	ASP
1	B	240	VAL
1	B	254	THR
1	B	265	GLU
1	C	156	GLY
1	C	194	ARG
1	C	223	ASP
1	C	377	LEU
1	C	378	ASP
1	A	156	GLY
1	A	378	ASP
1	B	214	LYS
1	B	239	LYS
1	B	311	ASP
1	B	316	GLN
1	C	157	ALA
1	C	214	LYS
1	C	316	GLN
1	B	73	GLN
1	B	272	ALA
1	C	217	CYS
1	A	158	GLY
1	B	376	THR
1	C	158	GLY
1	C	253	SER
1	A	272	ALA
1	C	239	LYS
1	C	375	VAL
1	B	131	ASP
1	B	309	VAL
1	B	171	GLY
1	B	70	PRO

5.3.2 Protein sidechains ⓘ

In the following table, the Percentiles column shows the percent sidechain outliers of the chain as a percentile score with respect to all X-ray entries followed by that with respect to entries of similar resolution. The Analysed column shows the number of residues for which the sidechain conformation was analysed, and the total number of residues.

Mol	Chain	Analysed	Rotameric	Outliers	Percentiles	
1	A	330/331 (100%)	319 (97%)	11 (3%)	50	71
1	B	331/331 (100%)	321 (97%)	10 (3%)	53	75
1	C	329/331 (99%)	314 (95%)	15 (5%)	37	55
All	All	990/993 (100%)	954 (96%)	36 (4%)	47	68

All (36) residues with a non-rotameric sidechain are listed below:

Mol	Chain	Res	Type
1	A	-2	SER
1	A	9	LYS
1	A	55	GLN
1	A	95	VAL
1	A	181	HIS
1	A	197	TRP
1	A	234	LEU
1	A	238	LYS
1	A	376	THR
1	A	378	ASP
1	A	381	ASP
1	B	1	GLU
1	B	49	HIS
1	B	55	GLN
1	B	75	LYS
1	B	149	LEU
1	B	197	TRP
1	B	234	LEU
1	B	262	TRP
1	B	341	PHE
1	B	381	ASP
1	C	1	GLU
1	C	40	VAL
1	C	55	GLN
1	C	70	PRO
1	C	125	GLU
1	C	197	TRP
1	C	234	LEU
1	C	254	THR
1	C	271	GLN
1	C	294	GLN
1	C	305	TYR
1	C	327	SER
1	C	336	VAL

Continued on next page...

Continued from previous page...

Mol	Chain	Res	Type
1	C	376	THR
1	C	378	ASP

Some sidechains can be flipped to improve hydrogen bonding and reduce clashes. All (15) such sidechains are listed below:

Mol	Chain	Res	Type
1	A	28	ASN
1	A	55	GLN
1	A	266	GLN
1	A	293	GLN
1	A	304	GLN
1	A	362	HIS
1	B	28	ASN
1	B	304	GLN
1	B	362	HIS
1	C	12	GLN
1	C	28	ASN
1	C	55	GLN
1	C	271	GLN
1	C	304	GLN
1	C	362	HIS

5.3.3 RNA ⓘ

There are no RNA chains in this entry.

5.4 Non-standard residues in protein, DNA, RNA chains ⓘ

There are no non-standard protein/DNA/RNA residues in this entry.

5.5 Carbohydrates ⓘ

There are no carbohydrates in this entry.

5.6 Ligand geometry ⓘ

3 ligands are modelled in this entry.

In the following table, the Counts columns list the number of bonds (or angles) for which Mogul statistics could be retrieved, the number of bonds (or angles) that are observed in the model and the number of bonds (or angles) that are defined in the chemical component dictionary. The Link column lists molecule types, if any, to which the group is linked. The Z score for a bond length (or angle) is the number of standard deviations the observed value is removed from the expected value. A bond length (or angle) with $|Z| > 2$ is considered an outlier worth inspection. RMSZ is the root-mean-square of all Z scores of the bond lengths (or angles).

Mol	Type	Chain	Res	Link	Bond lengths			Bond angles		
					Counts	RMSZ	$\# Z > 2$	Counts	RMSZ	$\# Z > 2$
2	XX4	A	501	-	34,34,34	1.73	9 (26%)	47,47,47	1.04	4 (8%)
2	XX4	B	502	-	34,34,34	1.79	8 (23%)	47,47,47	1.06	3 (6%)
2	XX4	C	503	-	34,34,34	1.62	8 (23%)	47,47,47	1.14	2 (4%)

In the following table, the Chirals column lists the number of chiral outliers, the number of chiral centers analysed, the number of these observed in the model and the number defined in the chemical component dictionary. Similar counts are reported in the Torsion and Rings columns. '-' means no outliers of that kind were identified.

Mol	Type	Chain	Res	Link	Chirals	Torsions	Rings
2	XX4	A	501	-	-	0/21/41/41	0/2/4/4
2	XX4	B	502	-	-	0/21/41/41	0/2/4/4
2	XX4	C	503	-	-	0/21/41/41	0/2/4/4

All (25) bond length outliers are listed below:

Mol	Chain	Res	Type	Atoms	Z	Observed(Å)	Ideal(Å)
2	B	502	XX4	C22-C09	4.53	1.46	1.40
2	B	502	XX4	C10-C11	3.93	1.45	1.39
2	A	501	XX4	C22-C09	3.87	1.45	1.40
2	B	502	XX4	C03-N02	3.77	1.41	1.35
2	C	503	XX4	C08-N07	3.52	1.52	1.46
2	A	501	XX4	C10-C11	3.46	1.44	1.39
2	C	503	XX4	C10-C11	3.28	1.44	1.39
2	C	503	XX4	C22-C09	3.11	1.44	1.40
2	B	502	XX4	C08-N07	3.08	1.51	1.46
2	A	501	XX4	C08-N07	3.04	1.51	1.46
2	B	502	XX4	C20-C11	3.00	1.44	1.39
2	A	501	XX4	C03-N02	2.96	1.40	1.35
2	A	501	XX4	C20-C11	2.94	1.44	1.39
2	C	503	XX4	C15-C14	2.76	1.44	1.39
2	C	503	XX4	C03-N02	2.64	1.39	1.35
2	A	501	XX4	C15-C14	2.59	1.43	1.39
2	C	503	XX4	C19-C14	2.56	1.43	1.39

Continued on next page...

Continued from previous page...

Mol	Chain	Res	Type	Atoms	Z	Observed(Å)	Ideal(Å)
2	B	502	XX4	C15-C14	2.54	1.43	1.39
2	A	501	XX4	C19-C14	2.52	1.43	1.39
2	B	502	XX4	C19-C14	2.48	1.43	1.39
2	A	501	XX4	C24-N07	2.34	1.42	1.35
2	A	501	XX4	C24-N25	2.34	1.39	1.34
2	C	503	XX4	C20-C11	2.18	1.43	1.39
2	C	503	XX4	C06-C05	2.06	1.55	1.52
2	B	502	XX4	C21-C22	2.00	1.43	1.40

All (9) bond angle outliers are listed below:

Mol	Chain	Res	Type	Atoms	Z	Observed(°)	Ideal(°)
2	C	503	XX4	C22-N23-C24	5.17	123.38	118.11
2	A	501	XX4	C22-N23-C24	3.52	121.70	118.11
2	B	502	XX4	C08-N07-C06	3.21	120.67	116.13
2	B	502	XX4	C22-N23-C24	3.09	121.26	118.11
2	B	502	XX4	N07-C24-N23	-2.98	120.02	124.77
2	C	503	XX4	C08-N07-C06	2.59	119.81	116.13
2	A	501	XX4	N07-C24-N23	-2.55	120.70	124.77
2	A	501	XX4	C08-N07-C06	2.25	119.32	116.13
2	A	501	XX4	C09-C22-N23	-2.18	120.16	122.17

There are no chirality outliers.

There are no torsion outliers.

There are no ring outliers.

5.7 Other polymers ⓘ

There are no such residues in this entry.

5.8 Polymer linkage issues

There are no chain breaks in this entry.

6 Fit of model and data ⓘ

6.1 Protein, DNA and RNA chains ⓘ

EDS was not executed - this section will therefore be empty.

6.2 Non-standard residues in protein, DNA, RNA chains ⓘ

EDS was not executed - this section will therefore be empty.

6.3 Carbohydrates ⓘ

EDS was not executed - this section will therefore be empty.

6.4 Ligands ⓘ

EDS was not executed - this section will therefore be empty.

6.5 Other polymers ⓘ

EDS was not executed - this section will therefore be empty.