



Full wwPDB X-ray Structure Validation Report ⓘ

Feb 27, 2014 – 03:54 AM GMT

PDB ID : 1Q2C
Title : Crystal Structure of Tetrahymena GCN5 With Bound Coenzyme A and a
19-residue Histone H4 Peptide
Authors : Poux, A.N.; Marmorstein, R.
Deposited on : 2003-07-24
Resolution : 2.25 Å(reported)

This is a full wwPDB validation report for a publicly released PDB entry.
We welcome your comments at validation@mail.wwpdb.org
A user guide is available at <http://wwpdb.org/ValidationPDFNotes.html>

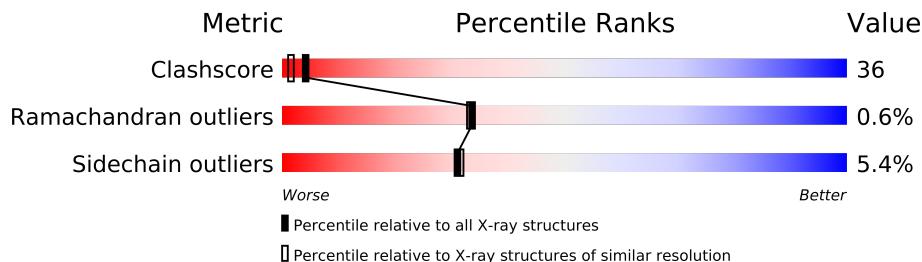
The following versions of software and data (see [references](#)) were used in the production of this report:

MolProbity : 4.02b-467
Mogul : 1.15 2013
Xtriage (Phenix) : **NOT EXECUTED**
EDS : **NOT EXECUTED**
Percentile statistics : 21963
Ideal geometry (proteins) : Engh & Huber (2001)
Ideal geometry (DNA, RNA) : Parkinson et. al. (1996)
Validation Pipeline (wwPDB-VP) : stable22683

1 Overall quality at a glance

The reported resolution of this entry is 2.25 Å.

Percentile scores (ranging between 0-100) for global validation metrics of the entry are shown in the following graphic. The table shows the number of entries on which the scores are based.



Metric	Whole archive (#Entries)	Similar resolution (#Entries, resolution range(Å))
Clashscore	79885	1326 (2.28-2.24)
Ramachandran outliers	78287	1291 (2.28-2.24)
Sidechain outliers	78261	1291 (2.28-2.24)

The table below summarises the geometric issues observed across the polymeric chains and their fit to the electron density. The red, orange, yellow and green segments on the lower bar indicate the fraction of residues that contain outliers for ≥ 3 , 2, 1 and 0 types of geometric quality criteria. The upper red bar (where present) indicates the fraction of residues that have poor fit to the electron density.

Note EDS was not executed.

Mol	Chain	Length	Quality of chain
1	A	162	
2	B	19	

2 Entry composition i

There are 4 unique types of molecules in this entry. The entry contains 1503 atoms, of which 0 are hydrogen and 0 are deuterium.

In the tables below, the ZeroOcc column contains the number of atoms modelled with zero occupancy, the AltConf column contains the number of residues with at least one atom in alternate conformation and the Trace column contains the number of residues modelled with at most 2 atoms.

- Molecule 1 is a protein called histone acetyltransferase GCN5.

Mol	Chain	Residues	Atoms					ZeroOcc	AltConf	Trace
1	A	162	Total	C	N	O	S	0	0	0
			1361	879	237	236	9			

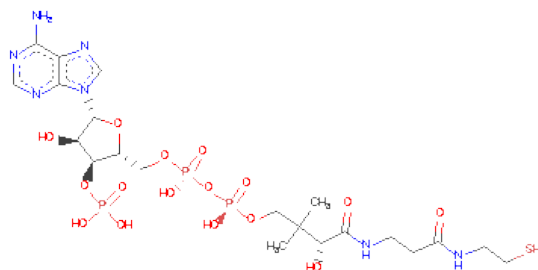
There are 2 discrepancies between the modelled and reference sequences:

Chain	Residue	Modelled	Actual	Comment	Reference
A	90	PHE	LEU	CLONING ARTIFACT	UNP Q27198
A	210	ARG	ASN	CLONING ARTIFACT	UNP Q27198

- Molecule 2 is a protein called Histone H4 peptide.

Mol	Chain	Residues	Atoms				ZeroOcc	AltConf	Trace
2	B	8	Total	C	N	O	0	0	0
			47	29	10	8			

- Molecule 3 is COENZYME A (three-letter code: COA) (formula: $C_{21}H_{36}N_7O_{16}P_3S$).



Mol	Chain	Residues	Atoms						ZeroOcc	AltConf
3	A	1	Total	C	N	O	P	S	0	0
			48	21	7	16	3	1		

- Molecule 4 is water.

Mol	Chain	Residues	Atoms		ZeroOcc	AltConf
4	A	47	Total	O	0	0
			47	47		

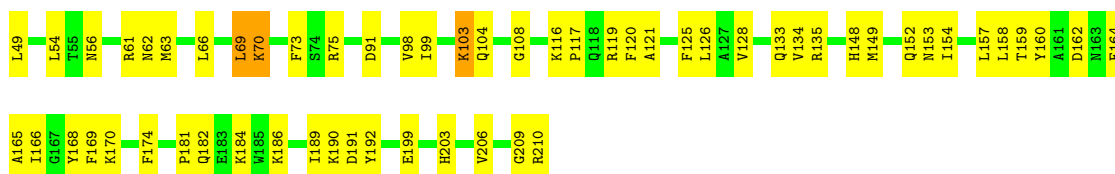
3 Residue-property plots

These plots are drawn for all protein, RNA and DNA chains in the entry. The first graphic for a chain summarises the proportions of errors displayed in the second graphic. The second graphic shows the sequence view annotated by issues in geometry and electron density. Residues are color-coded according to the number of geometric quality criteria for which they contain at least one outlier: green = 0, yellow = 1, orange = 2 and red = 3 or more. A red dot above a residue indicates a poor fit to the electron density ($RSRZ > 2$). Stretches of 2 or more consecutive residues without any outlier are shown as a green connector. Residues present in the sample, but not in the model, are shown in grey.

Note EDS was not executed.

- Molecule 1: histone acetyltransferase GCN5

Chain A:



- Molecule 2: Histone H4 peptide

Chain B:



4 Data and refinement statistics

Xtriage (Phenix) and EDS were not executed - this section will therefore be incomplete.

Property	Value	Source
Space group	P 32 2 1	Depositor
Cell constants a, b, c, α , β , γ	65.13Å 65.13Å 96.57Å 90.00° 90.00° 120.00°	Depositor
Resolution (Å)	27.07 – 2.25	Depositor
% Data completeness (in resolution range)	93.5 (27.07-2.25)	Depositor
R_{merge}	(Not available)	Depositor
R_{sym}	(Not available)	Depositor
Refinement program	CNS 1.1	Depositor
R, R_{free}	0.252 , 0.279	Depositor
Estimated twinning fraction	No twinning to report.	Xtriage
Total number of atoms	1503	wwPDB-VP
Average B, all atoms (Å ²)	29.0	wwPDB-VP

5 Model quality

5.1 Standard geometry

Bond lengths and bond angles in the following residue types are not validated in this section: COA

The Z score for a bond length (or angle) is the number of standard deviations the observed value is removed from the expected value. A bond length (or angle) with $|Z| > 5$ is considered an outlier worth inspection. RMSZ is the root-mean-square of all Z scores of the bond lengths (or angles).

Mol	Chain	Bond lengths		Bond angles	
		RMSZ	$\# Z > 5$	RMSZ	$\# Z > 5$
1	A	0.37	0/1394	0.62	0/1867
2	B	0.35	0/46	0.67	0/57
All	All	0.37	0/1440	0.62	0/1924

There are no bond length outliers.

There are no bond angle outliers.

There are no chirality outliers.

There are no planarity outliers.

5.2 Close contacts

In the following table, the Non-H and H(model) columns list the number of non-hydrogen atoms and hydrogen atoms in the chain respectively. The H(added) column lists the number of hydrogens added by MolProbity. The Clashes column lists the number of clashes within the asymmetric unit, and the number in parentheses is this value normalized per 1000 atoms of the molecule in the chain. The Symm-Clashes column gives symmetry related clashes, in the same way as for the Clashes column.

Mol	Chain	Non-H	H(model)	H(added)	Clashes	Symm-Clashes
1	A	1361	0	1365	86	0
2	B	47	0	53	30	0
3	A	48	0	31	29	0
4	A	47	0	0	2	0
All	All	1503	0	1449	106	0

Clashscore is defined as the number of clashes calculated for the entry per 1000 atoms (including hydrogens) of the entry. The overall clashscore for this entry is 36.

All (106) close contacts within the same asymmetric unit are listed below.

Atom-1	Atom-2	Distance(Å)	Clash(Å)
1:A:165:ALA:HB2	2:B:310:LEU:HD23	1.41	1.03
1:A:128:VAL:HG23	3:A:401:COA:H122	1.52	0.91
1:A:149:MET:HE3	1:A:154:ILE:HG21	1.55	0.89
1:A:128:VAL:HB	3:A:401:COA:H121	1.54	0.88
1:A:128:VAL:HG23	3:A:401:COA:CCP	2.05	0.86
1:A:128:VAL:CG2	3:A:401:COA:H121	2.09	0.83
1:A:128:VAL:CG2	3:A:401:COA:CCP	2.57	0.82
1:A:128:VAL:CB	3:A:401:COA:H121	2.11	0.81
1:A:164:PHE:HE2	2:B:310:LEU:HG	1.45	0.79
1:A:165:ALA:HB2	2:B:310:LEU:CD2	2.13	0.79
1:A:159:THR:OG1	2:B:308:LYS:HD2	1.88	0.73
1:A:169:PHE:CZ	2:B:308:LYS:HD3	2.24	0.72
1:A:158:LEU:HD12	1:A:189:ILE:HD12	1.70	0.71
1:A:181:PRO:HB2	1:A:184:LYS:HG2	1.70	0.71
1:A:164:PHE:C	3:A:401:COA:H61A	1.94	0.70
1:A:164:PHE:CE2	2:B:310:LEU:HG	2.26	0.69
2:B:311:GLY:O	2:B:312:LYS:HD2	1.92	0.69
3:A:401:COA:S1P	2:B:308:LYS:HE3	2.34	0.68
3:A:401:COA:P2A	3:A:401:COA:P1A	2.92	0.68
3:A:401:COA:O5A	3:A:401:COA:C3B	2.41	0.67
1:A:164:PHE:O	3:A:401:COA:N6A	2.20	0.67
1:A:121:ALA:HB3	1:A:149:MET:HE2	1.77	0.66
3:A:401:COA:O5A	3:A:401:COA:H2B	1.96	0.65
1:A:149:MET:CE	1:A:154:ILE:HG21	2.25	0.64
3:A:401:COA:O5P	2:B:310:LEU:HD21	1.97	0.64
1:A:149:MET:HG3	1:A:157:LEU:HD21	1.80	0.63
1:A:165:ALA:CB	2:B:310:LEU:HD23	2.25	0.63
1:A:61:ARG:HH22	1:A:104:GLN:HA	1.63	0.63
1:A:125:PHE:HA	2:B:308:LYS:NZ	2.15	0.61
1:A:116:LYS:HZ3	1:A:152:GLN:HB3	1.64	0.60
3:A:401:COA:S1P	2:B:308:LYS:HA	2.42	0.59
2:B:311:GLY:C	2:B:312:LYS:HD2	2.22	0.59
3:A:401:COA:S1P	2:B:308:LYS:NZ	2.75	0.59
3:A:401:COA:O5A	3:A:401:COA:C2B	2.50	0.59
3:A:401:COA:S1P	2:B:308:LYS:CE	2.90	0.59
1:A:54:LEU:HG	1:A:66:LEU:CD2	2.32	0.59
1:A:164:PHE:CD1	3:A:401:COA:N6A	2.70	0.59
1:A:128:VAL:CG2	3:A:401:COA:H122	2.24	0.58
2:B:308:LYS:HB2	2:B:308:LYS:HZ3	1.68	0.58
3:A:401:COA:H22	2:B:310:LEU:HD22	1.86	0.58
1:A:158:LEU:CD1	1:A:189:ILE:HD12	2.34	0.58
1:A:164:PHE:C	3:A:401:COA:N6A	2.57	0.57
1:A:149:MET:HE1	1:A:154:ILE:HG13	1.88	0.56

Continued on next page...

Continued from previous page...

Atom-1	Atom-2	Distance(Å)	Clash(Å)
1:A:54:LEU:HD23	1:A:66:LEU:HD13	1.87	0.56
3:A:401:COA:H22	2:B:310:LEU:CD2	2.37	0.55
1:A:210:ARG:HB3	1:A:210:ARG:HH11	1.72	0.55
1:A:186:LYS:NZ	1:A:191:ASP:HB2	2.22	0.55
3:A:401:COA:S1P	2:B:308:LYS:HG3	2.47	0.55
4:A:528:HOH:O	2:B:315:ALA:HB3	2.06	0.54
1:A:119:ARG:HD2	1:A:153:ASN:O	2.09	0.53
1:A:158:LEU:HD12	1:A:189:ILE:CD1	2.36	0.52
1:A:125:PHE:CA	2:B:308:LYS:HZ1	2.23	0.51
1:A:190:LYS:HD3	1:A:192:TYR:CZ	2.46	0.51
1:A:209:GLY:O	1:A:210:ARG:HB2	2.11	0.51
1:A:61:ARG:NH2	1:A:104:GLN:HA	2.27	0.49
1:A:54:LEU:HG	1:A:66:LEU:HD22	1.94	0.49
1:A:125:PHE:HA	2:B:308:LYS:HZ1	1.76	0.49
1:A:116:LYS:NZ	1:A:152:GLN:HB3	2.27	0.49
1:A:54:LEU:HG	1:A:66:LEU:HD21	1.93	0.49
1:A:54:LEU:CD2	1:A:66:LEU:HD22	2.42	0.49
1:A:62:ASN:HD22	1:A:62:ASN:N	2.10	0.49
1:A:62:ASN:O	1:A:66:LEU:HD23	2.13	0.49
1:A:149:MET:CE	1:A:154:ILE:HG13	2.43	0.49
1:A:121:ALA:HB3	1:A:149:MET:CE	2.42	0.49
1:A:69:LEU:HD11	1:A:73:PHE:CE1	2.47	0.48
1:A:116:LYS:NZ	1:A:152:GLN:O	2.46	0.48
1:A:99:ILE:HD12	1:A:108:GLY:HA3	1.95	0.47
1:A:116:LYS:HB2	1:A:117:PRO:HD3	1.95	0.47
1:A:203:HIS:HB3	1:A:206:VAL:HG23	1.96	0.47
1:A:126:LEU:HG	3:A:401:COA:H132	1.97	0.47
1:A:210:ARG:HB3	1:A:210:ARG:NH1	2.30	0.46
1:A:186:LYS:HZ3	1:A:191:ASP:HB2	1.81	0.46
1:A:56:ASN:OD1	1:A:63:MET:CE	2.63	0.46
3:A:401:COA:C2P	2:B:310:LEU:HD22	2.44	0.46
1:A:210:ARG:NH1	1:A:210:ARG:CB	2.79	0.46
1:A:103:LYS:O	1:A:104:GLN:HG3	2.15	0.46
1:A:54:LEU:HD22	1:A:98:VAL:HG11	1.98	0.45
1:A:162:ASP:HB3	2:B:310:LEU:O	2.18	0.44
1:A:149:MET:HE3	1:A:154:ILE:CG2	2.36	0.44
1:A:190:LYS:HD3	1:A:192:TYR:OH	2.17	0.44
1:A:69:LEU:CD1	1:A:73:PHE:CE1	3.00	0.44
2:B:308:LYS:CB	2:B:308:LYS:HZ3	2.31	0.44
1:A:169:PHE:CE1	2:B:308:LYS:HD3	2.51	0.44
1:A:120:PHE:C	1:A:120:PHE:CD1	2.91	0.44
1:A:134:VAL:HG12	1:A:134:VAL:O	2.18	0.43

Continued on next page...

Continued from previous page...

Atom-1	Atom-2	Distance(Å)	Clash(Å)
1:A:182:GLN:HG2	1:A:186:LYS:HD3	2.00	0.43
1:A:121:ALA:CB	1:A:149:MET:CE	2.95	0.43
1:A:164:PHE:HE1	3:A:401:COA:N7A	2.17	0.43
1:A:164:PHE:CE1	3:A:401:COA:N7A	2.87	0.43
1:A:160:TYR:O	2:B:308:LYS:HG2	2.18	0.43
1:A:121:ALA:HB2	1:A:149:MET:HE1	2.01	0.42
1:A:91:ASP:C	1:A:91:ASP:OD2	2.57	0.42
1:A:168:TYR:HB2	3:A:401:COA:C5A	2.49	0.42
1:A:148:HIS:HE1	4:A:517:HOH:O	2.02	0.42
1:A:166:ILE:HG22	1:A:170:LYS:HE3	2.02	0.42
1:A:169:PHE:HB3	1:A:174:PHE:HB2	2.01	0.42
2:B:310:LEU:HD12	2:B:310:LEU:HA	1.81	0.42
3:A:401:COA:P2A	3:A:401:COA:H143	2.37	0.42
1:A:70:LYS:HB3	1:A:70:LYS:HE3	1.90	0.41
1:A:164:PHE:CG	1:A:165:ALA:N	2.88	0.41
1:A:164:PHE:CE2	2:B:310:LEU:CD2	3.03	0.41
1:A:162:ASP:O	1:A:165:ALA:HB3	2.21	0.41
1:A:158:LEU:HD23	1:A:199:GLU:HB3	2.02	0.41
1:A:203:HIS:HB3	1:A:206:VAL:CG2	2.51	0.41
1:A:164:PHE:CE2	2:B:310:LEU:CG	3.01	0.40
1:A:133:GLN:O	1:A:135:ARG:HG3	2.21	0.40

There are no symmetry-related clashes.

5.3 Torsion angles

5.3.1 Protein backbone ⓘ

In the following table, the Percentiles column shows the percent Ramachandran outliers of the chain as a percentile score with respect to all X-ray entries followed by that with respect to entries of similar resolution. The Analysed column shows the number of residues for which the backbone conformation was analysed, and the total number of residues.

Mol	Chain	Analysed	Favoured	Allowed	Outliers	Percentiles	
1	A	160/162 (99%)	151 (94%)	9 (6%)	0	100	100
2	B	6/19 (32%)	3 (50%)	2 (33%)	1 (17%)	0	0
All	All	166/181 (92%)	154 (93%)	11 (7%)	1 (1%)	33	33

All (1) Ramachandran outliers are listed below:

Mol	Chain	Res	Type
2	B	312	LYS

5.3.2 Protein sidechains ⓘ

In the following table, the Percentiles column shows the percent sidechain outliers of the chain as a percentile score with respect to all X-ray entries followed by that with respect to entries of similar resolution. The Analysed column shows the number of residues for which the sidechain conformation was analysed, and the total number of residues.

Mol	Chain	Analysed	Rotameric	Outliers	Percentiles	
1	A	145/145 (100%)	140 (97%)	5 (3%)	49	57
2	B	3/10 (30%)	0	3 (100%)	0	0
All	All	148/155 (96%)	140 (95%)	8 (5%)	31	31

All (8) residues with a non-rotameric sidechain are listed below:

Mol	Chain	Res	Type
1	A	49	LEU
1	A	69	LEU
1	A	70	LYS
1	A	75	ARG
1	A	103	LYS
2	B	308	LYS
2	B	310	LEU
2	B	312	LYS

Some sidechains can be flipped to improve hydrogen bonding and reduce clashes. All (6) such sidechains are listed below:

Mol	Chain	Res	Type
1	A	62	ASN
1	A	71	ASN
1	A	102	ASN
1	A	133	GLN
1	A	148	HIS
1	A	163	ASN

5.3.3 RNA ⓘ

There are no RNA chains in this entry.

5.4 Non-standard residues in protein, DNA, RNA chains ⓘ

There are no non-standard protein/DNA/RNA residues in this entry.

5.5 Carbohydrates ⓘ

There are no carbohydrates in this entry.

5.6 Ligand geometry ⓘ

1 ligand is modelled in this entry.

In the following table, the Counts columns list the number of bonds (or angles) for which Mogul statistics could be retrieved, the number of bonds (or angles) that are observed in the model and the number of bonds (or angles) that are defined in the chemical component dictionary. The Link column lists molecule types, if any, to which the group is linked. The Z score for a bond length (or angle) is the number of standard deviations the observed value is removed from the expected value. A bond length (or angle) with $|Z| > 2$ is considered an outlier worth inspection. RMSZ is the root-mean-square of all Z scores of the bond lengths (or angles).

Mol	Type	Chain	Res	Link	Bond lengths			Bond angles		
					Counts	RMSZ	$\# Z > 2$	Counts	RMSZ	$\# Z > 2$
3	COA	A	401	-	50,50,50	53.28	26 (52%)	75,75,75	8.41	40 (53%)

In the following table, the Chirals column lists the number of chiral outliers, the number of chiral centers analysed, the number of these observed in the model and the number defined in the chemical component dictionary. Similar counts are reported in the Torsion and Rings columns. '-' means no outliers of that kind were identified.

Mol	Type	Chain	Res	Link	Chirals	Torsions	Rings
3	COA	A	401	-	1/1/11/13	1/48/64/64	0/1/3/3

All (26) bond length outliers are listed below:

Mol	Chain	Res	Type	Atoms	Z	Observed(Å)	Ideal(Å)
3	A	401	COA	P2A-O3A	282.87	6.72	1.59
3	A	401	COA	P1A-O3A	180.96	4.87	1.59
3	A	401	COA	P2A-O4A	135.15	6.65	1.51
3	A	401	COA	P1A-O2A	88.38	5.49	1.55
3	A	401	COA	P2A-O5A	50.85	3.82	1.55
3	A	401	COA	O4B-C1B	11.36	1.58	1.41
3	A	401	COA	O4B-C4B	7.76	1.63	1.45
3	A	401	COA	C5B-C4B	6.69	1.73	1.51

Continued on next page...

Continued from previous page...

Mol	Chain	Res	Type	Atoms	Z	Observed(Å)	Ideal(Å)
3	A	401	COA	CBP-CAP	6.61	1.62	1.55
3	A	401	COA	O9P-C9P	6.12	1.35	1.23
3	A	401	COA	CCP-CBP	6.04	1.62	1.52
3	A	401	COA	C3B-C4B	5.80	1.69	1.52
3	A	401	COA	C1B-N9A	4.81	1.63	1.48
3	A	401	COA	P3B-O3B	3.48	1.70	1.59
3	A	401	COA	CAP-C9P	3.29	1.63	1.53
3	A	401	COA	CDP-CBP	3.25	1.60	1.53
3	A	401	COA	C2A-N1A	3.05	1.39	1.33
3	A	401	COA	P3B-O8A	3.02	1.65	1.54
3	A	401	COA	C4A-N9A	2.94	1.42	1.37
3	A	401	COA	C8A-N9A	2.92	1.40	1.36
3	A	401	COA	C3P-N4P	2.86	1.53	1.46
3	A	401	COA	O5P-C5P	2.65	1.29	1.23
3	A	401	COA	C2B-C3B	2.59	1.59	1.53
3	A	401	COA	C6A-N6A	-2.41	1.27	1.35
3	A	401	COA	C2A-N3A	2.31	1.36	1.32
3	A	401	COA	OAP-CAP	2.21	1.46	1.42

All (40) bond angle outliers are listed below:

Mol	Chain	Res	Type	Atoms	Z	Observed(°)	Ideal(°)
3	A	401	COA	P2A-O3A-P1A	-37.12	22.83	131.68
3	A	401	COA	CBP-CAP-C9P	-21.77	91.62	112.73
3	A	401	COA	OAP-CAP-CBP	21.67	161.11	110.71
3	A	401	COA	CEP-CBP-CCP	-21.51	77.77	108.76
3	A	401	COA	CEP-CBP-CDP	-19.60	81.18	109.08
3	A	401	COA	O5A-P2A-O4A	-16.79	18.40	112.21
3	A	401	COA	OAP-CAP-C9P	-15.84	69.92	110.76
3	A	401	COA	O2A-P1A-O3A	-15.68	30.73	105.14
3	A	401	COA	O5A-P2A-O3A	-14.52	36.25	105.14
3	A	401	COA	O3A-P2A-O4A	-11.45	29.09	111.28
3	A	401	COA	CEP-CBP-CAP	-10.99	89.76	108.82
3	A	401	COA	O3A-P1A-O5B	-9.30	61.81	103.41
3	A	401	COA	CDP-CBP-CCP	9.27	122.11	108.76
3	A	401	COA	O2A-P1A-O1A	-9.00	61.95	112.21
3	A	401	COA	O4B-C1B-C2B	-8.36	93.96	106.77
3	A	401	COA	O3A-P1A-O1A	-8.34	51.39	111.28
3	A	401	COA	O4B-C1B-N9A	8.08	115.96	108.44
3	A	401	COA	O2A-P1A-O5B	-7.13	72.58	108.51
3	A	401	COA	CDP-CBP-CAP	5.85	118.97	108.82
3	A	401	COA	P1A-O5B-C5B	5.83	163.96	122.03

Continued on next page...

Continued from previous page...

Mol	Chain	Res	Type	Atoms	Z	Observed(°)	Ideal(°)
3	A	401	COA	CAP-C9P-N8P	-5.21	105.43	116.57
3	A	401	COA	O9P-C9P-CAP	4.93	129.46	120.48
3	A	401	COA	O5B-C5B-C4B	-4.86	91.10	108.94
3	A	401	COA	O8A-P3B-O3B	4.77	120.82	107.09
3	A	401	COA	O6A-P2A-O4A	-4.61	91.33	109.37
3	A	401	COA	O3B-C3B-C4B	4.04	125.85	110.06
3	A	401	COA	O3B-P3B-O7A	-3.89	95.93	106.79
3	A	401	COA	P2A-O6A-CCP	3.83	143.25	121.66
3	A	401	COA	C4A-C5A-N7A	3.78	112.76	109.52
3	A	401	COA	CCP-CBP-CAP	3.77	114.21	108.70
3	A	401	COA	N3A-C2A-N1A	-3.61	125.69	128.71
3	A	401	COA	O3A-P2A-O6A	3.35	118.38	103.41
3	A	401	COA	C2B-C3B-C4B	-3.11	97.11	103.16
3	A	401	COA	O4B-C4B-C3B	-3.11	97.82	104.88
3	A	401	COA	O5A-P2A-O6A	-2.67	95.04	108.51
3	A	401	COA	C2P-C3P-N4P	-2.49	106.87	112.45
3	A	401	COA	C3P-N4P-C5P	2.45	127.82	122.84
3	A	401	COA	C6P-C5P-N4P	-2.40	112.14	116.50
3	A	401	COA	O9A-P3B-O7A	2.36	118.14	110.44
3	A	401	COA	C5A-C4A-N9A	-2.03	104.24	107.16

All (1) chirality outliers are listed below:

Mol	Chain	Res	Type	Atom
3	A	401	COA	CAP

All (1) torsion outliers are listed below:

Mol	Chain	Res	Type	Atoms
3	A	401	COA	P3B-O3B-C3B-C4B

There are no ring outliers.

5.7 Other polymers ⓘ

There are no such residues in this entry.

5.8 Polymer linkage issues

There are no chain breaks in this entry.

6 Fit of model and data ⓘ

6.1 Protein, DNA and RNA chains ⓘ

EDS was not executed - this section will therefore be empty.

6.2 Non-standard residues in protein, DNA, RNA chains ⓘ

EDS was not executed - this section will therefore be empty.

6.3 Carbohydrates ⓘ

EDS was not executed - this section will therefore be empty.

6.4 Ligands ⓘ

EDS was not executed - this section will therefore be empty.

6.5 Other polymers ⓘ

EDS was not executed - this section will therefore be empty.