



# Full wwPDB X-ray Structure Validation Report ⓘ

Feb 28, 2014 – 07:02 PM GMT

PDB ID : 1Q3Q  
Title : Crystal structure of the chaperonin from Thermococcus strain KS-1 (two-point mutant complexed with AMP-PNP)  
Authors : Shomura, Y.; Yoshida, T.; Iizuka, R.; Maruyama, T.; Yohda, M.; Miki, K.  
Deposited on : 2003-07-31  
Resolution : 2.30 Å(reported)

This is a full wwPDB validation report for a publicly released PDB entry.  
We welcome your comments at [validation@mail.wwpdb.org](mailto:validation@mail.wwpdb.org)  
A user guide is available at <http://wwpdb.org/ValidationPDFNotes.html>

---

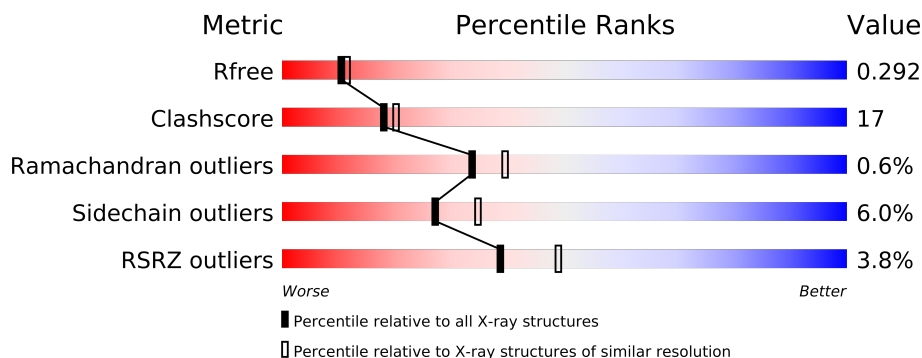
The following versions of software and data (see [references](#)) were used in the production of this report:

MolProbity : 4.02b-467  
Mogul : 1.15 2013  
Xtriage (Phenix) : dev-1323  
EDS : stable22639  
Percentile statistics : 21963  
Refmac : 5.8.0049  
CCP4 : 6.3.0 (Settle)  
Ideal geometry (proteins) : Engh & Huber (2001)  
Ideal geometry (DNA, RNA) : Parkinson et. al. (1996)  
Validation Pipeline (wwPDB-VP) : stable22683

# 1 Overall quality at a glance

The reported resolution of this entry is 2.30 Å.

Percentile scores (ranging between 0-100) for global validation metrics of the entry are shown in the following graphic. The table shows the number of entries on which the scores are based.



Metric	Whole archive (#Entries)	Similar resolution (#Entries, resolution range(Å))
$R_{free}$	66092	2929 (2.30-2.30)
Clashscore	79885	3679 (2.30-2.30)
Ramachandran outliers	78287	3642 (2.30-2.30)
Sidechain outliers	78261	3641 (2.30-2.30)
RSRZ outliers	66119	2930 (2.30-2.30)

The table below summarises the geometric issues observed across the polymeric chains and their fit to the electron density. The red, orange, yellow and green segments on the lower bar indicate the fraction of residues that contain outliers for  $\geq 3$ , 2, 1 and 0 types of geometric quality criteria. The upper red bar (where present) indicates the fraction of residues that have poor fit to the electron density.

Mol	Chain	Length	Quality of chain
1	A	548	
1	B	548	
1	C	548	
1	D	548	

The following table lists non-polymeric compounds that are outliers for geometric or electron-density-fit criteria:

Mol	Type	Chain	Res	Geometry	Electron density
2	MG	A	1527	-	X
2	MG	B	2527	-	X
2	MG	C	3527	-	X
2	MG	D	4527	-	X

*Continued on next page...*

*Continued from previous page...*

Mol	Type	Chain	Res	Geometry	Electron density
3	ANP	B	2528	-	X
3	ANP	C	3528	-	X
3	ANP	D	4528	-	X

## 2 Entry composition

There are 4 unique types of molecules in this entry. The entry contains 16610 atoms, of which 0 are hydrogen and 0 are deuterium.

In the tables below, the ZeroOcc column contains the number of atoms modelled with zero occupancy, the AltConf column contains the number of residues with at least one atom in alternate conformation and the Trace column contains the number of residues modelled with at most 2 atoms.

- Molecule 1 is a protein called Thermosome alpha subunit.

Mol	Chain	Residues	Atoms					ZeroOcc	AltConf	Trace
1	A	518	Total	C	N	O	S	0	0	0
			3947	2485	673	772	17			
1	B	518	Total	C	N	O	S	0	0	0
			3947	2485	673	772	17			
1	C	518	Total	C	N	O	S	0	0	0
			3947	2485	673	772	17			
1	D	518	Total	C	N	O	S	0	0	0
			3947	2485	673	772	17			

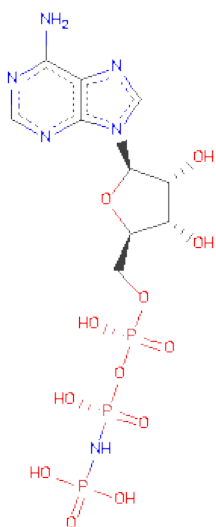
There are 8 discrepancies between the modelled and reference sequences:

Chain	Residue	Modelled	Actual	Comment	Reference
A	65	CYS	GLY	ENGINEERED	UNP O24729
A	125	THR	ILE	ENGINEERED	UNP O24729
B	65	CYS	GLY	ENGINEERED	UNP O24729
B	125	THR	ILE	ENGINEERED	UNP O24729
C	65	CYS	GLY	ENGINEERED	UNP O24729
C	125	THR	ILE	ENGINEERED	UNP O24729
D	65	CYS	GLY	ENGINEERED	UNP O24729
D	125	THR	ILE	ENGINEERED	UNP O24729

- Molecule 2 is MAGNESIUM ION (three-letter code: MG) (formula: Mg).

Mol	Chain	Residues	Atoms		ZeroOcc	AltConf
2	B	1	Total	Mg	0	0
			1	1		
2	A	1	Total	Mg	0	0
			1	1		
2	D	1	Total	Mg	0	0
			1	1		
2	C	1	Total	Mg	0	0
			1	1		

- Molecule 3 is PHOSPHOAMINOPHOSPHONICACID-ADENYLATE ESTER (three-letter code: ANP) (formula:  $C_{10}H_{17}N_6O_{12}P_3$ ).



Mol	Chain	Residues	Atoms					ZeroOcc	AltConf
3	A	1	Total	C	N	O	P	0	0
			31	10	6	12	3		
3	B	1	Total	C	N	O	P	0	0
			31	10	6	12	3		
3	C	1	Total	C	N	O	P	0	0
			31	10	6	12	3		
3	D	1	Total	C	N	O	P	0	0
			31	10	6	12	3		

- Molecule 4 is water.

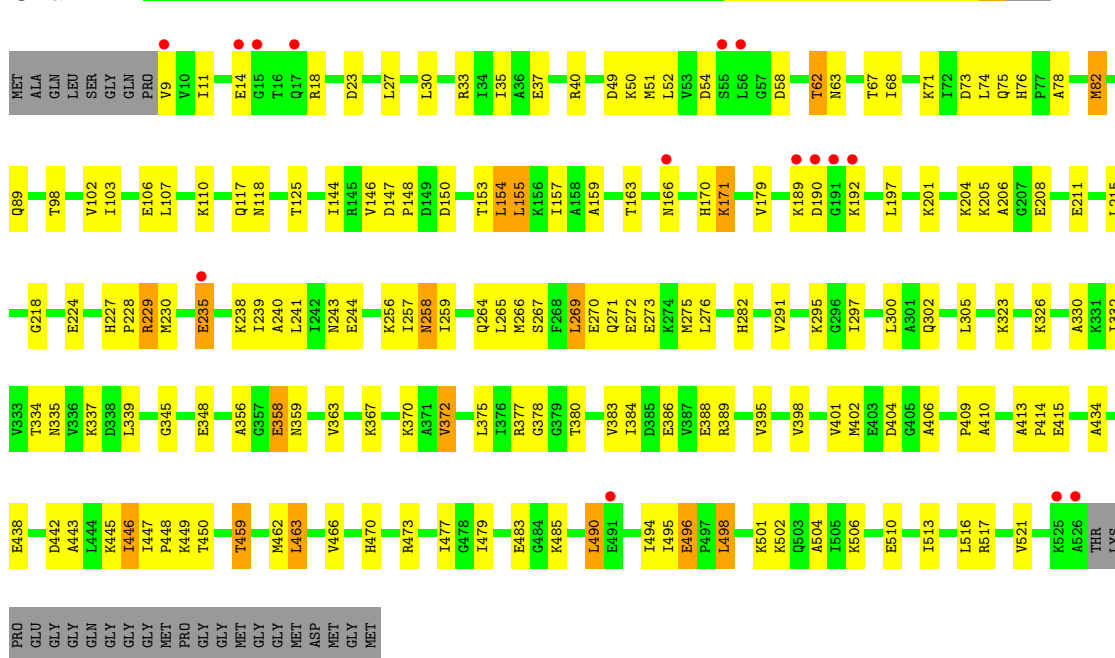
Mol	Chain	Residues	Atoms		ZeroOcc	AltConf
4	A	162	Total	O	0	0
			162	162		
4	B	174	Total	O	0	0
			174	174		
4	C	194	Total	O	0	0
			194	194		
4	D	164	Total	O	0	0
			164	164		

### 3 Residue-property plots

These plots are drawn for all protein, RNA and DNA chains in the entry. The first graphic for a chain summarises the proportions of errors displayed in the second graphic. The second graphic shows the sequence view annotated by issues in geometry and electron density. Residues are color-coded according to the number of geometric quality criteria for which they contain at least one outlier: green = 0, yellow = 1, orange = 2 and red = 3 or more. A red dot above a residue indicates a poor fit to the electron density ( $RSRZ > 2$ ). Stretches of 2 or more consecutive residues without any outlier are shown as a green connector. Residues present in the sample, but not in the model, are shown in grey.

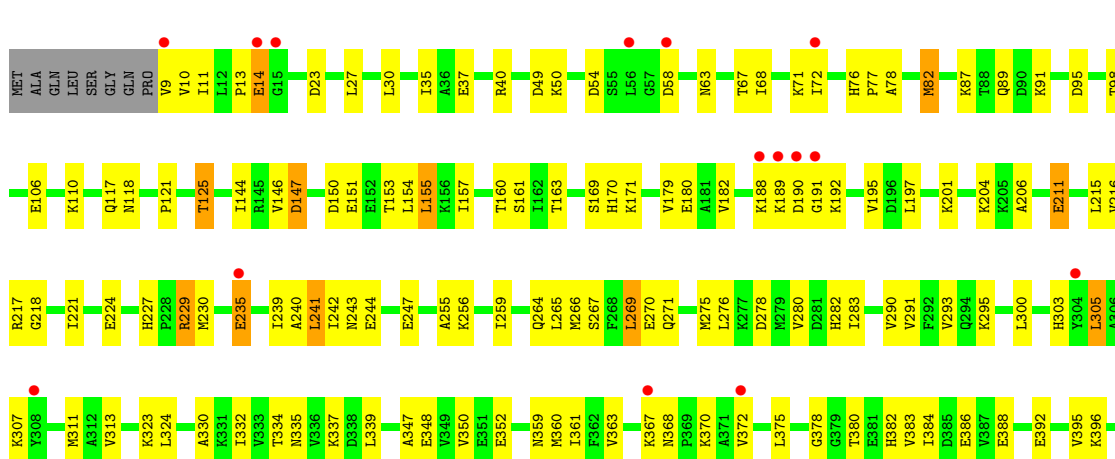
- Molecule 1: Thermosome alpha subunit

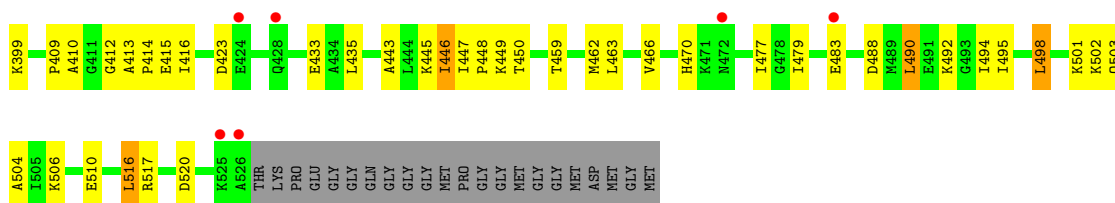
Chain A:



- Molecule 1: Thermosome alpha subunit

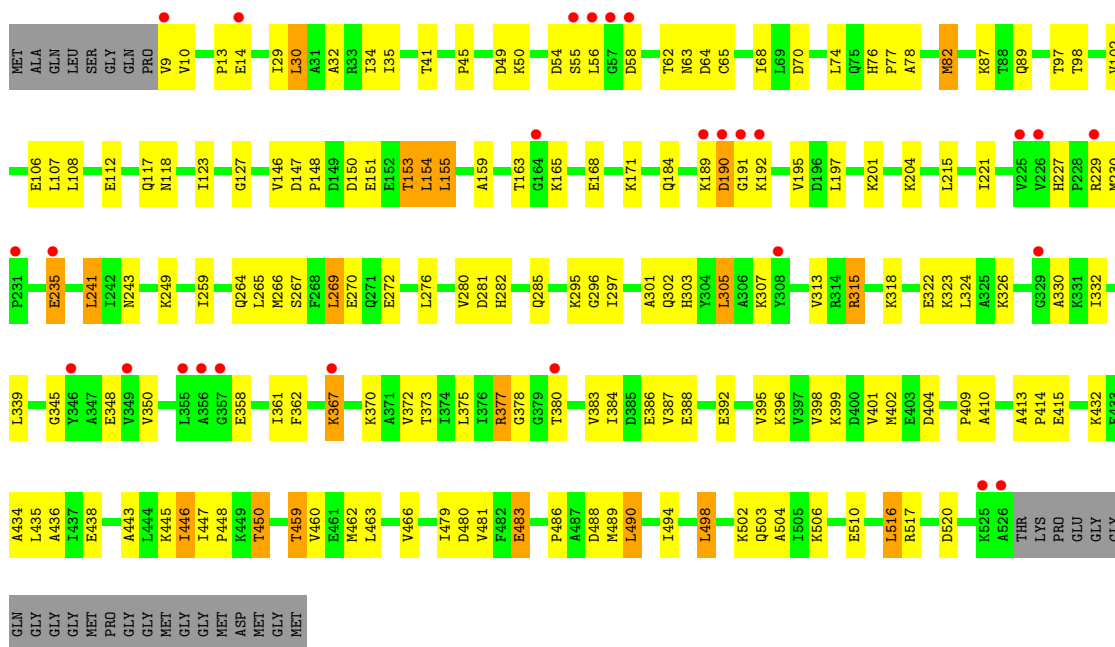
Chain B:





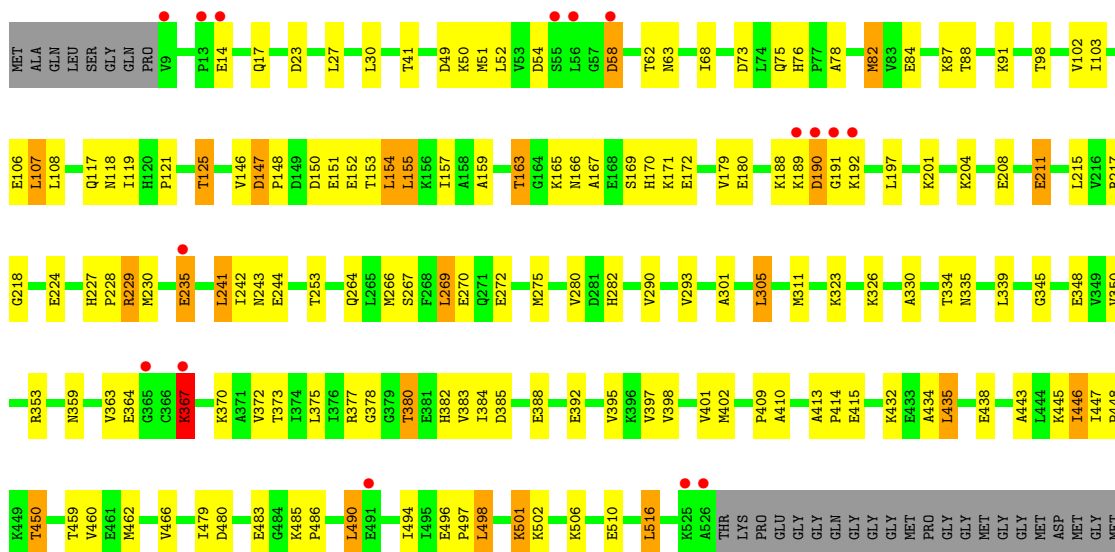
- Molecule 1: Thermosome alpha subunit

Chain C:



- Molecule 1: Thermosome alpha subunit

Chain D:



## 4 Data and refinement statistics

Property	Value	Source
Space group	P 4 21 2	Depositor
Cell constants a, b, c, $\alpha$ , $\beta$ , $\gamma$	210.83Å 210.83Å 156.42Å 90.00° 90.00° 90.00°	Depositor
Resolution (Å)	41.97 – 2.30 42.17 – 2.30	Depositor EDS
% Data completeness (in resolution range)	96.1 (41.97-2.30) 95.3 (42.17-2.30)	Depositor EDS
$R_{merge}$	(Not available)	Depositor
$R_{sym}$	0.12	Depositor
$\langle I/\sigma(I) \rangle$ <sup>1</sup>	3.16 (at 2.29Å)	Xtriage
Refinement program	CNS 1.1	Depositor
R, $R_{free}$	0.213 , 0.250 0.270 , 0.292	Depositor DCC
$R_{free}$ test set	7448 reflections (5.03%)	DCC
Wilson B-factor (Å <sup>2</sup> )	21.7	Xtriage
Anisotropy	0.261	Xtriage
Bulk solvent $k_{sol}$ (e/Å <sup>3</sup> ), $B_{sol}$ (Å <sup>2</sup> )	0.36 , 30.3	EDS
Estimated twinning fraction	No twinning to report.	Xtriage
L-test for twinning	$\langle  L  \rangle = 0.47$ , $\langle L^2 \rangle = 0.30$	Xtriage
Outliers	0 of 148090 reflections	Xtriage
$F_o, F_c$ correlation	0.87	EDS
Total number of atoms	16610	wwPDB-VP
Average B, all atoms (Å <sup>2</sup> )	25.0	wwPDB-VP

Xtriage's analysis on translational NCS is as follows: *The largest off-origin peak in the Patterson function is 3.47% of the height of the origin peak. No significant pseudotranslation is detected.*

<sup>1</sup>Intensities estimated from amplitudes.



## 5 Model quality

### 5.1 Standard geometry

Bond lengths and bond angles in the following residue types are not validated in this section: MG, ANP

The Z score for a bond length (or angle) is the number of standard deviations the observed value is removed from the expected value. A bond length (or angle) with  $|Z| > 5$  is considered an outlier worth inspection. RMSZ is the root-mean-square of all Z scores of the bond lengths (or angles).

Mol	Chain	Bond lengths		Bond angles	
		RMSZ	# $ Z  > 5$	RMSZ	# $ Z  > 5$
1	A	0.32	0/3982	0.61	0/5367
1	B	0.32	0/3982	0.60	0/5367
1	C	0.33	0/3982	0.61	0/5367
1	D	0.32	0/3982	0.61	0/5367
All	All	0.32	0/15928	0.61	0/21468

There are no bond length outliers.

There are no bond angle outliers.

There are no chirality outliers.

There are no planarity outliers.

### 5.2 Close contacts

In the following table, the Non-H and H(model) columns list the number of non-hydrogen atoms and hydrogen atoms in the chain respectively. The H(added) column lists the number of hydrogens added by MolProbity. The Clashes column lists the number of clashes within the asymmetric unit, and the number in parentheses is this value normalized per 1000 atoms of the molecule in the chain. The Symm-Clashes column gives symmetry related clashes, in the same way as for the Clashes column.

Mol	Chain	Non-H	H(model)	H(added)	Clashes	Symm-Clashes
1	A	3947	0	4127	148	0
1	B	3947	0	4127	145	0
1	C	3947	0	4127	148	2
1	D	3947	0	4127	144	2
2	A	1	0	0	0	0
2	B	1	0	0	0	0
2	C	1	0	0	0	0
2	D	1	0	0	0	0

*Continued on next page...*

*Continued from previous page...*

Mol	Chain	Non-H	H(model)	H(added)	Clashes	Symm-Clashes
3	A	31	0	13	2	0
3	B	31	0	13	2	0
3	C	31	0	13	2	0
3	D	31	0	13	2	0
4	A	162	0	0	5	1
4	B	174	0	0	7	2
4	C	194	0	0	6	3
4	D	164	0	0	3	4
All	All	16610	0	16560	554	7

Clashscore is defined as the number of clashes calculated for the entry per 1000 atoms (including hydrogens) of the entry. The overall clashscore for this entry is 17.

All (554) close contacts within the same asymmetric unit are listed below.

Atom-1	Atom-2	Distance(Å)	Clash(Å)
1:A:146:VAL:HG23	4:A:1148:HOH:O	1.60	1.01
1:C:446:ILE:O	1:C:450:THR:HG23	1.65	0.97
1:D:446:ILE:O	1:D:450:THR:HG23	1.65	0.97
1:A:166:ASN:HB3	1:B:517:ARG:HD2	1.48	0.95
1:D:466:VAL:HG21	1:D:479:ILE:HG12	1.50	0.94
1:C:62:THR:HG22	1:C:64:ASP:H	1.31	0.93
1:C:503:GLN:HE22	1:D:208:GLU:H	1.07	0.93
1:A:462:MET:O	1:A:466:VAL:HG23	1.67	0.93
1:C:146:VAL:HG21	1:C:153:THR:HG21	1.51	0.90
1:A:410:ALA:HB3	1:A:494:ILE:HG22	1.54	0.90
1:A:208:GLU:H	1:B:503:GLN:HE22	1.13	0.90
1:D:380:THR:HG22	1:D:383:VAL:H	1.35	0.90
1:C:98:THR:H	3:C:3528:ANP:HNB1	1.20	0.89
1:A:163:THR:HG22	1:A:171:LYS:NZ	1.88	0.88
1:C:466:VAL:HG21	1:C:479:ILE:HG12	1.56	0.86
1:B:409:PRO:HB3	1:B:490:LEU:HD13	1.56	0.86
1:A:98:THR:H	3:A:1528:ANP:HNB1	1.23	0.85
1:A:459:THR:HG23	4:C:3189:HOH:O	1.75	0.85
1:B:466:VAL:HG21	1:B:479:ILE:HG12	1.60	0.83
1:D:410:ALA:HB3	1:D:494:ILE:HG22	1.58	0.83
1:C:410:ALA:HB3	1:C:494:ILE:HG22	1.61	0.83
1:B:462:MET:O	1:B:466:VAL:HG23	1.78	0.83
1:D:98:THR:H	3:D:4528:ANP:HNB1	1.27	0.82
1:C:503:GLN:HE22	1:D:208:GLU:N	1.78	0.81
1:A:163:THR:HG22	1:A:171:LYS:HZ2	1.44	0.81
1:B:450:THR:HG22	4:B:2054:HOH:O	1.80	0.80
1:A:166:ASN:HB3	1:B:517:ARG:CD	2.12	0.80

*Continued on next page...*

*Continued from previous page...*

Atom-1	Atom-2	Distance(Å)	Clash(Å)
1:B:98:THR:H	3:B:2528:ANP:HNB1	1.30	0.79
1:B:170:HIS:CD2	1:B:211:GLU:HG2	2.18	0.79
1:A:409:PRO:HB3	1:A:490:LEU:HD13	1.65	0.78
1:C:503:GLN:NE2	1:D:208:GLU:H	1.79	0.78
1:B:446:ILE:O	1:B:450:THR:HG23	1.83	0.78
1:C:447:ILE:HB	1:C:448:PRO:HD3	1.65	0.78
1:D:235:GLU:O	1:D:348:GLU:O	2.01	0.77
4:C:3074:HOH:O	1:D:380:THR:HG21	1.84	0.77
1:B:211:GLU:HB2	4:B:2030:HOH:O	1.86	0.76
1:B:160:THR:O	1:B:163:THR:HG22	1.85	0.76
1:B:23:ASP:O	1:B:27:LEU:HD23	1.85	0.76
1:C:409:PRO:HB3	1:C:490:LEU:HD13	1.68	0.76
1:A:380:THR:HG21	4:B:1067:HOH:O	1.85	0.75
1:A:466:VAL:HG21	1:A:479:ILE:HG12	1.66	0.75
1:C:462:MET:O	1:C:466:VAL:HG23	1.86	0.74
1:C:204:LYS:HB3	1:C:384:ILE:HG21	1.68	0.74
1:C:204:LYS:HD2	1:C:384:ILE:HG22	1.70	0.74
1:C:62:THR:HG23	1:C:386:GLU:OE2	1.88	0.74
1:A:483:GLU:HG2	1:A:485:LYS:HE2	1.69	0.74
1:D:445:LYS:O	1:D:448:PRO:HD2	1.88	0.74
1:D:170:HIS:CD2	1:D:211:GLU:HG2	2.23	0.74
1:B:163:THR:HB	1:B:171:LYS:NZ	2.02	0.73
1:D:462:MET:O	1:D:466:VAL:HG23	1.87	0.73
1:D:434:ALA:O	1:D:438:GLU:HG3	1.89	0.73
1:A:447:ILE:HB	1:A:448:PRO:HD3	1.69	0.73
1:A:150:ASP:OD2	1:A:153:THR:HG23	1.89	0.73
1:D:409:PRO:HB3	1:D:490:LEU:HD13	1.72	0.72
1:B:280:VAL:HG13	1:B:305:LEU:HD13	1.72	0.71
1:D:189:LYS:HG3	1:D:190:ASP:OD2	1.91	0.71
1:C:280:VAL:HG13	1:C:305:LEU:HD13	1.70	0.71
1:D:23:ASP:O	1:D:27:LEU:HD23	1.90	0.71
1:C:204:LYS:HB3	1:C:384:ILE:CG2	2.21	0.71
1:C:434:ALA:O	1:C:438:GLU:HG3	1.92	0.70
1:A:450:THR:HG22	4:A:1037:HOH:O	1.91	0.70
1:A:415:GLU:HG3	1:A:447:ILE:HB	1.73	0.70
1:C:380:THR:HG23	1:C:383:VAL:H	1.55	0.70
1:A:54:ASP:OD2	1:A:58:ASP:HB3	1.90	0.69
1:A:204:LYS:HB3	1:A:384:ILE:HG21	1.74	0.69
1:C:466:VAL:HG22	1:C:486:PRO:HG3	1.73	0.69
1:C:415:GLU:HG3	1:C:447:ILE:HB	1.74	0.69
1:B:163:THR:HB	1:B:171:LYS:HZ3	1.56	0.69
1:A:189:LYS:HG2	1:A:192:LYS:O	1.93	0.69

*Continued on next page...*

*Continued from previous page...*

Atom-1	Atom-2	Distance(Å)	Clash(Å)
1:A:75:GLN:NE2	1:B:13:PRO:HG3	2.07	0.69
1:B:447:ILE:HB	1:B:448:PRO:HD3	1.75	0.69
1:C:54:ASP:OD2	1:C:58:ASP:HB2	1.92	0.69
1:A:443:ALA:O	1:A:446:ILE:HG13	1.93	0.68
1:B:201:LYS:HB2	1:B:323:LYS:HE2	1.76	0.68
1:B:443:ALA:O	1:B:446:ILE:HG13	1.93	0.68
1:B:215:LEU:HD21	1:B:372:VAL:HG21	1.76	0.68
1:A:208:GLU:N	1:B:503:GLN:HE22	1.90	0.68
1:B:227:HIS:CE1	1:B:229:ARG:HB2	2.29	0.67
1:C:380:THR:HG22	1:C:383:VAL:HG23	1.76	0.67
1:A:23:ASP:O	1:A:27:LEU:HD23	1.93	0.67
1:A:50:LYS:HG2	1:B:520:ASP:HB3	1.77	0.67
1:B:50:LYS:HD2	1:B:68:ILE:HD13	1.77	0.67
1:A:459:THR:CG2	4:C:3189:HOH:O	2.40	0.67
1:D:166:ASN:O	1:D:167:ALA:HB3	1.94	0.66
1:B:410:ALA:HB3	1:B:494:ILE:HG22	1.76	0.66
1:B:204:LYS:HB2	1:B:384:ILE:HG21	1.77	0.66
1:D:466:VAL:HG21	1:D:479:ILE:CG1	2.24	0.66
1:A:227:HIS:HD2	1:A:229:ARG:H	1.43	0.66
1:C:401:VAL:O	1:C:404:ASP:O	2.14	0.66
1:D:50:LYS:HD2	1:D:68:ILE:HD13	1.78	0.66
1:C:201:LYS:HB2	1:C:323:LYS:HE2	1.78	0.66
1:A:125:THR:HG21	4:A:1087:HOH:O	1.95	0.65
1:B:54:ASP:OD2	1:B:58:ASP:HB3	1.97	0.65
1:B:466:VAL:HG21	1:B:479:ILE:CG1	2.25	0.65
1:C:443:ALA:O	1:C:446:ILE:HG13	1.96	0.65
1:C:150:ASP:HB3	1:C:153:THR:HG23	1.79	0.65
1:B:243:ASN:O	1:B:295:LYS:HG2	1.97	0.65
1:B:266:MET:O	1:B:270:GLU:HG3	1.95	0.64
1:A:208:GLU:H	1:B:503:GLN:NE2	1.92	0.64
1:B:227:HIS:HB3	1:B:230:MET:HG3	1.79	0.64
1:C:445:LYS:O	1:C:448:PRO:HD2	1.97	0.64
1:D:146:VAL:HG21	1:D:153:THR:HG21	1.78	0.64
1:A:82:MET:CE	1:A:82:MET:HA	2.28	0.64
1:B:247:GLU:HA	1:B:276:LEU:HD21	1.79	0.64
1:D:498:LEU:HD22	1:D:502:LYS:HG3	1.79	0.64
1:A:335:ASN:OD1	1:A:337:LYS:HG2	1.97	0.64
1:D:447:ILE:HB	1:D:448:PRO:HD3	1.78	0.64
1:C:159:ALA:O	1:C:163:THR:HG23	1.99	0.63
1:B:241:LEU:HB3	1:B:332:ILE:HD13	1.80	0.63
1:B:204:LYS:HB2	1:B:384:ILE:CG2	2.28	0.63
1:C:215:LEU:HD11	1:C:372:VAL:HG13	1.80	0.63

*Continued on next page...*

*Continued from previous page...*

Atom-1	Atom-2	Distance(Å)	Clash(Å)
1:A:243:ASN:OD1	1:A:334:THR:HA	1.97	0.63
1:A:410:ALA:HB1	3:A:1528:ANP:O2'	1.99	0.63
1:A:189:LYS:HG3	1:A:190:ASP:OD2	1.99	0.63
1:A:244:GLU:HB3	1:A:334:THR:O	1.99	0.63
1:C:197:LEU:HD22	1:C:395:VAL:CG1	2.28	0.63
1:A:50:LYS:HD2	1:A:68:ILE:HD13	1.81	0.62
1:D:49:ASP:OD1	1:D:63:ASN:HB2	1.99	0.62
1:A:155:LEU:HD12	1:A:179:VAL:HG21	1.81	0.62
1:C:410:ALA:HB1	3:C:3528:ANP:O2'	1.98	0.62
1:A:125:THR:HG23	1:A:513:ILE:HG23	1.80	0.62
1:B:241:LEU:HD22	1:B:330:ALA:HB3	1.81	0.62
1:D:190:ASP:C	1:D:192:LYS:H	2.00	0.62
1:C:32:ALA:HB1	1:C:82:MET:CE	2.29	0.62
1:D:150:ASP:OD1	1:D:153:THR:HG23	1.98	0.62
1:D:415:GLU:HG3	1:D:447:ILE:HB	1.80	0.62
1:C:215:LEU:HD11	1:C:372:VAL:CG1	2.29	0.62
1:A:276:LEU:HD23	1:A:300:LEU:HB3	1.81	0.62
1:A:197:LEU:HD22	1:A:395:VAL:CG1	2.30	0.61
1:A:446:ILE:O	1:A:450:THR:HG23	2.00	0.61
1:C:108:LEU:HD23	1:C:516:LEU:HD22	1.82	0.61
1:C:259:ILE:HD13	1:C:265:LEU:HD23	1.83	0.61
1:D:266:MET:HE2	1:D:269:LEU:HD23	1.82	0.61
1:A:146:VAL:CG2	4:A:1148:HOH:O	2.31	0.61
1:C:498:LEU:HD22	1:C:502:LYS:HG3	1.82	0.61
1:D:241:LEU:HD22	1:D:330:ALA:HB3	1.83	0.61
1:A:204:LYS:HB3	1:A:384:ILE:CG2	2.30	0.61
1:B:215:LEU:HD21	1:B:372:VAL:CG2	2.31	0.60
1:A:227:HIS:CD2	1:A:229:ARG:H	2.18	0.60
1:D:87:LYS:HA	1:D:87:LYS:HE2	1.82	0.60
1:D:76:HIS:HD2	1:D:78:ALA:H	1.48	0.60
1:B:215:LEU:HD23	1:B:216:VAL:N	2.16	0.60
1:D:443:ALA:O	1:D:446:ILE:HG13	2.01	0.60
1:B:278:ASP:OD2	4:B:2073:HOH:O	2.17	0.60
1:A:163:THR:HG22	1:A:171:LYS:HZ1	1.66	0.59
1:A:170:HIS:CD2	1:A:211:GLU:HG2	2.37	0.59
1:D:155:LEU:HD12	1:D:179:VAL:HG21	1.84	0.59
1:D:76:HIS:CD2	1:D:78:ALA:H	2.20	0.59
1:A:380:THR:HG23	1:A:383:VAL:H	1.68	0.59
1:A:146:VAL:HG22	1:A:147:ASP:N	2.17	0.59
1:C:56:LEU:HD12	1:C:56:LEU:N	2.17	0.59
1:D:378:GLY:N	1:D:384:ILE:HD11	2.17	0.59
1:D:410:ALA:HB1	3:D:4528:ANP:O2'	2.03	0.59

*Continued on next page...*

*Continued from previous page...*

Atom-1	Atom-2	Distance(Å)	Clash(Å)
1:C:62:THR:HG22	1:C:63:ASN:H	1.67	0.59
1:D:201:LYS:HB2	1:D:323:LYS:HE2	1.85	0.58
1:B:206:ALA:HA	1:B:384:ILE:HD12	1.84	0.58
1:A:227:HIS:CD2	1:A:229:ARG:HB2	2.38	0.58
1:C:108:LEU:HD23	1:C:516:LEU:CD2	2.33	0.58
1:A:170:HIS:NE2	1:A:211:GLU:HG2	2.18	0.58
1:A:239:ILE:HD12	1:A:239:ILE:N	2.19	0.58
1:C:70:ASP:HB2	1:C:87:LYS:HE2	1.86	0.57
1:C:13:PRO:HG3	1:D:75:GLN:NE2	2.19	0.57
1:C:266:MET:O	1:C:270:GLU:HG3	2.04	0.57
1:B:466:VAL:CG2	1:B:479:ILE:HG12	2.34	0.57
1:A:204:LYS:HD2	1:A:384:ILE:HG22	1.86	0.57
1:C:108:LEU:CD2	1:C:516:LEU:HD22	2.35	0.57
1:D:244:GLU:HB2	1:D:334:THR:O	2.03	0.57
1:B:244:GLU:HB3	1:B:334:THR:O	2.04	0.57
1:C:191:GLY:C	1:C:192:LYS:HD2	2.25	0.57
1:C:62:THR:HG22	1:C:63:ASN:N	2.19	0.57
1:B:445:LYS:O	1:B:448:PRO:HD2	2.04	0.57
1:A:282:HIS:HE1	1:A:339:LEU:O	1.88	0.57
1:D:483:GLU:HG3	1:D:485:LYS:HE3	1.85	0.57
1:D:159:ALA:O	1:D:163:THR:HG22	2.05	0.56
1:B:87:LYS:O	1:B:91:LYS:HG2	2.05	0.56
1:A:148:PRO:O	1:A:402:MET:HG2	2.06	0.56
1:B:433:GLU:CD	1:B:433:GLU:H	2.09	0.56
1:A:380:THR:HG22	1:A:383:VAL:HB	1.87	0.56
1:B:151:GLU:HG2	1:B:155:LEU:HD22	1.87	0.56
1:C:380:THR:HG22	1:C:383:VAL:CG2	2.36	0.56
1:D:146:VAL:HG22	1:D:147:ASP:N	2.20	0.56
1:A:117:GLN:O	1:A:118:ASN:HB2	2.06	0.56
1:A:513:ILE:O	1:A:517:ARG:HG3	2.06	0.56
1:A:434:ALA:O	1:A:438:GLU:HG3	2.06	0.55
1:D:266:MET:O	1:D:270:GLU:HG3	2.05	0.55
1:D:413:ALA:HB3	1:D:414:PRO:HD3	1.88	0.55
1:B:224:GLU:HG2	1:B:359:ASN:HB2	1.88	0.55
1:A:146:VAL:HG21	1:A:153:THR:HG21	1.87	0.55
1:C:227:HIS:CD2	1:C:229:ARG:H	2.24	0.55
1:C:380:THR:CG2	1:C:383:VAL:HG23	2.37	0.55
1:C:201:LYS:HB2	1:C:323:LYS:CE	2.36	0.55
1:B:189:LYS:HG3	1:B:190:ASP:OD2	2.07	0.55
1:B:498:LEU:HD22	1:B:502:LYS:HG3	1.89	0.55
1:C:30:LEU:HD22	1:C:34:ILE:HD11	1.89	0.55
1:A:264:GLN:HA	1:A:267:SER:OG	2.07	0.54

*Continued on next page...*

*Continued from previous page...*

Atom-1	Atom-2	Distance(Å)	Clash(Å)
1:C:313:VAL:HG21	1:C:361:ILE:CD1	2.36	0.54
1:B:415:GLU:HG3	1:B:447:ILE:HB	1.89	0.54
1:C:227:HIS:HB3	1:C:230:MET:HG3	1.88	0.54
1:A:146:VAL:HG22	1:A:147:ASP:H	1.72	0.54
1:B:335:ASN:HB3	1:B:337:LYS:HG2	1.89	0.54
1:A:211:GLU:HB2	4:A:1110:HOH:O	2.07	0.54
1:D:445:LYS:C	1:D:448:PRO:HD2	2.27	0.54
1:B:37:GLU:HA	1:B:40:ARG:HG2	1.90	0.54
1:B:150:ASP:OD1	1:B:153:THR:HG23	2.08	0.54
1:C:281:ASP:O	1:C:285:GLN:HG3	2.08	0.54
1:B:410:ALA:HB1	3:B:2528:ANP:O2'	2.07	0.54
1:C:77:PRO:HB2	1:D:51:MET:CE	2.37	0.53
1:A:206:ALA:HA	1:A:384:ILE:HD12	1.90	0.53
1:C:517:ARG:NH1	1:D:165:LYS:HA	2.24	0.53
1:A:241:LEU:HD23	1:A:332:ILE:HD13	1.90	0.53
1:B:264:GLN:HA	1:B:267:SER:OG	2.08	0.53
1:B:388:GLU:O	1:B:392:GLU:HG3	2.09	0.53
1:B:155:LEU:HD13	1:B:179:VAL:HG21	1.89	0.53
1:C:76:HIS:CD2	1:C:78:ALA:H	2.27	0.53
1:C:89:GLN:HE22	1:C:504:ALA:N	2.07	0.53
1:B:449:LYS:HG3	1:B:459:THR:CG2	2.39	0.53
1:D:91:LYS:HB2	1:D:91:LYS:HZ2	1.74	0.53
1:C:241:LEU:HD23	1:C:332:ILE:HD13	1.89	0.53
1:D:372:VAL:HG13	1:D:373:THR:N	2.23	0.53
1:A:483:GLU:CG	1:A:485:LYS:HE2	2.39	0.52
1:D:280:VAL:HG13	1:D:305:LEU:HD13	1.91	0.52
1:C:282:HIS:HE1	1:C:339:LEU:O	1.91	0.52
1:C:517:ARG:NH1	1:D:166:ASN:H	2.07	0.52
1:A:201:LYS:HB2	1:A:323:LYS:HE2	1.92	0.52
1:D:106:GLU:HB2	1:D:446:ILE:HG12	1.91	0.52
1:B:216:VAL:O	1:B:372:VAL:HG22	2.09	0.52
1:B:380:THR:HG22	1:B:383:VAL:H	1.74	0.52
1:D:496:GLU:HG3	4:D:4061:HOH:O	2.09	0.52
1:D:82:MET:HA	1:D:82:MET:CE	2.39	0.52
1:B:409:PRO:HB3	1:B:490:LEU:CD1	2.35	0.52
1:A:82:MET:HE2	1:A:82:MET:HA	1.90	0.52
1:A:380:THR:HG22	1:A:383:VAL:CG2	2.40	0.52
1:B:380:THR:HG22	1:B:382:HIS:N	2.24	0.52
1:C:326:LYS:HB3	1:C:370:LYS:HB2	1.90	0.52
1:C:146:VAL:HG22	1:C:147:ASP:N	2.24	0.52
1:B:144:ILE:HD11	1:B:490:LEU:HD21	1.92	0.52
1:D:155:LEU:CD1	1:D:179:VAL:HG21	2.40	0.52

*Continued on next page...*



*Continued from previous page...*

Atom-1	Atom-2	Distance(Å)	Clash(Å)
1:D:215:LEU:HD11	1:D:372:VAL:CG1	2.40	0.52
1:C:409:PRO:HB3	1:C:490:LEU:CD1	2.38	0.52
1:B:265:LEU:O	1:B:269:LEU:HD22	2.09	0.52
1:A:445:LYS:O	1:A:448:PRO:HD2	2.10	0.51
1:D:388:GLU:O	1:D:392:GLU:HG3	2.10	0.51
1:C:195:VAL:HB	1:C:399:LYS:HG3	1.91	0.51
1:C:117:GLN:O	1:C:118:ASN:HB2	2.08	0.51
1:A:239:ILE:HG22	1:A:241:LEU:HD13	1.92	0.51
1:A:380:THR:CG2	1:A:383:VAL:H	2.22	0.51
1:A:235:GLU:O	1:A:348:GLU:O	2.28	0.51
1:B:188:LYS:NZ	1:B:191:GLY:H	2.07	0.51
1:D:242:ILE:O	1:D:293:VAL:HA	2.11	0.51
1:D:41:THR:O	1:D:41:THR:HG22	2.09	0.51
1:B:82:MET:HA	1:B:82:MET:CE	2.41	0.51
1:A:227:HIS:HB3	1:A:230:MET:HG3	1.91	0.51
1:B:146:VAL:HG21	1:B:153:THR:HG21	1.91	0.51
1:D:154:LEU:HG	1:D:398:VAL:HG13	1.93	0.51
1:B:68:ILE:O	1:B:72:ILE:HG13	2.11	0.51
1:C:55:SER:OG	1:C:56:LEU:HD12	2.11	0.51
1:B:106:GLU:CB	1:B:446:ILE:HG12	2.41	0.51
1:D:204:LYS:HD2	1:D:384:ILE:HG23	1.92	0.51
1:A:144:ILE:HD11	1:A:490:LEU:HD21	1.93	0.50
1:A:258:ASN:HD22	1:A:258:ASN:N	2.08	0.50
1:D:272:GLU:HA	1:D:275:MET:CE	2.41	0.50
1:C:517:ARG:HD2	1:D:166:ASN:HB3	1.93	0.50
1:A:259:ILE:HD13	1:A:265:LEU:HD23	1.93	0.50
1:B:182:VAL:CG2	1:B:395:VAL:HG13	2.42	0.50
1:C:297:ILE:HG22	1:C:302:GLN:HG3	1.93	0.50
1:C:301:ALA:O	1:C:305:LEU:HD22	2.12	0.50
1:C:517:ARG:HH12	1:D:165:LYS:HA	1.76	0.50
1:D:204:LYS:HD2	1:D:384:ILE:CG2	2.41	0.50
1:B:282:HIS:HE1	1:B:339:LEU:O	1.94	0.50
1:C:41:THR:HG22	1:C:41:THR:O	2.12	0.50
1:D:334:THR:HG22	1:D:335:ASN:ND2	2.25	0.50
1:A:297:ILE:HG22	1:A:302:GLN:HG3	1.92	0.50
1:C:150:ASP:OD1	1:C:153:THR:HG22	2.12	0.50
1:D:146:VAL:HG22	1:D:147:ASP:H	1.77	0.50
1:B:157:ILE:HD13	1:B:495:ILE:HG13	1.92	0.50
1:C:150:ASP:HB3	1:C:153:THR:CG2	2.41	0.50
1:B:117:GLN:O	1:B:118:ASN:HB2	2.11	0.50
1:C:410:ALA:O	1:C:489:MET:HG3	2.12	0.50
1:C:378:GLY:N	1:C:384:ILE:HD11	2.27	0.50

*Continued on next page...*



*Continued from previous page...*

Atom-1	Atom-2	Distance(Å)	Clash(Å)
1:C:163:THR:HG22	1:C:171:LYS:HD3	1.94	0.50
1:C:56:LEU:HD12	1:C:56:LEU:H	1.75	0.50
1:B:413:ALA:HB3	1:B:414:PRO:HD3	1.94	0.50
1:C:77:PRO:HB2	1:D:51:MET:HE1	1.94	0.50
1:C:480:ASP:OD1	1:C:483:GLU:HB2	2.11	0.49
1:B:190:ASP:C	1:B:192:LYS:H	2.16	0.49
1:A:218:GLY:HA3	1:A:363:VAL:O	2.12	0.49
1:B:76:HIS:HD2	1:B:78:ALA:H	1.58	0.49
1:A:466:VAL:HG21	1:A:479:ILE:CG1	2.39	0.49
1:C:13:PRO:HD3	1:D:73:ASP:O	2.12	0.49
1:C:313:VAL:HG21	1:C:361:ILE:HD12	1.93	0.49
1:B:488:ASP:O	1:B:492:LYS:HG2	2.12	0.49
1:D:415:GLU:H	1:D:415:GLU:CD	2.16	0.49
1:B:9:VAL:O	1:B:11:ILE:HG12	2.12	0.49
1:A:35:ILE:HD11	1:A:74:LEU:HD22	1.94	0.49
1:B:242:ILE:O	1:B:293:VAL:HA	2.12	0.49
1:B:259:ILE:HD13	1:B:265:LEU:HD23	1.93	0.49
1:D:188:LYS:HE3	1:D:191:GLY:HA2	1.94	0.49
1:D:119:ILE:HD11	1:D:435:LEU:HD23	1.95	0.49
1:A:206:ALA:HA	1:A:384:ILE:CD1	2.41	0.49
1:A:73:ASP:O	1:B:13:PRO:HD3	2.12	0.49
1:D:466:VAL:HG22	1:D:486:PRO:HG3	1.94	0.49
1:A:272:GLU:HA	1:A:275:MET:HE3	1.95	0.49
1:D:180:GLU:CD	1:D:215:LEU:HD23	2.33	0.48
1:B:197:LEU:HD22	1:B:395:VAL:HG12	1.95	0.48
1:A:224:GLU:HG2	1:A:359:ASN:HB2	1.95	0.48
1:D:197:LEU:HD22	1:D:395:VAL:CG1	2.42	0.48
1:D:506:LYS:O	1:D:510:GLU:HG3	2.14	0.48
1:A:330:ALA:HB2	1:A:345:GLY:HA3	1.94	0.48
1:C:259:ILE:CD1	1:C:265:LEU:HD23	2.43	0.48
1:C:330:ALA:HB2	1:C:345:GLY:HA3	1.95	0.48
1:D:224:GLU:HG2	1:D:359:ASN:HB2	1.96	0.48
1:B:412:GLY:O	1:B:415:GLU:HG2	2.13	0.48
1:C:215:LEU:CD1	1:C:372:VAL:HG13	2.42	0.48
1:D:218:GLY:HA3	1:D:363:VAL:O	2.13	0.48
1:C:388:GLU:O	1:C:392:GLU:HG3	2.13	0.48
1:D:119:ILE:CD1	1:D:435:LEU:HD23	2.43	0.48
1:D:157:ILE:HG13	1:D:401:VAL:HG21	1.96	0.48
1:C:517:ARG:CD	1:D:166:ASN:HB3	2.43	0.48
1:A:9:VAL:O	1:A:9:VAL:HG13	2.12	0.48
1:A:410:ALA:HB2	1:A:496:GLU:HG2	1.96	0.48
1:C:76:HIS:HD2	1:C:78:ALA:H	1.60	0.48

*Continued on next page...*

*Continued from previous page...*

Atom-1	Atom-2	Distance(Å)	Clash(Å)
1:B:449:LYS:HG3	1:B:459:THR:HG23	1.96	0.48
1:C:9:VAL:O	1:C:9:VAL:HG13	2.14	0.48
1:C:106:GLU:HB2	1:C:446:ILE:HG12	1.95	0.48
1:B:201:LYS:HB2	1:B:323:LYS:CE	2.43	0.48
1:A:272:GLU:HA	1:A:275:MET:CE	2.44	0.48
1:C:32:ALA:HB1	1:C:82:MET:HE2	1.95	0.48
1:D:266:MET:CE	1:D:269:LEU:HD23	2.42	0.48
1:A:62:THR:HG23	1:A:389:ARG:NE	2.28	0.48
1:D:166:ASN:O	1:D:167:ALA:CB	2.60	0.47
1:A:413:ALA:HB3	1:A:414:PRO:HD3	1.96	0.47
1:D:103:ILE:HG22	1:D:107:LEU:HD22	1.95	0.47
1:C:30:LEU:HD22	1:C:34:ILE:CD1	2.44	0.47
1:A:380:THR:HG22	1:A:383:VAL:CB	2.44	0.47
1:C:517:ARG:HH11	1:D:166:ASN:H	1.62	0.47
1:C:192:LYS:HD2	1:C:192:LYS:N	2.29	0.47
1:B:224:GLU:HG2	1:B:359:ASN:CB	2.45	0.47
1:B:49:ASP:OD1	1:B:63:ASN:HB2	2.13	0.47
1:A:157:ILE:HG13	1:A:401:VAL:HG21	1.95	0.47
1:D:121:PRO:O	1:D:125:THR:HB	2.15	0.47
1:D:264:GLN:HA	1:D:267:SER:OG	2.14	0.47
1:B:89:GLN:HE22	1:B:504:ALA:N	2.13	0.47
1:D:380:THR:HG23	1:D:382:HIS:H	1.80	0.47
1:C:517:ARG:NH1	1:D:166:ASN:N	2.63	0.47
1:C:190:ASP:C	1:C:192:LYS:H	2.18	0.47
1:D:432:LYS:O	1:D:435:LEU:HB2	2.15	0.47
1:C:148:PRO:O	1:C:402:MET:HG2	2.15	0.47
1:B:95:ASP:OD1	1:B:161:SER:CB	2.63	0.47
1:B:271:GLN:HG3	1:B:275:MET:CE	2.45	0.47
1:B:303:HIS:CE1	1:B:307:LYS:HD2	2.50	0.47
1:A:76:HIS:CD2	1:A:78:ALA:H	2.33	0.47
1:A:380:THR:HG22	1:A:383:VAL:HG23	1.96	0.47
1:A:62:THR:CG2	1:A:389:ARG:NE	2.78	0.47
1:D:204:LYS:HB3	1:D:384:ILE:CG2	2.45	0.47
1:C:264:GLN:HA	1:C:267:SER:OG	2.15	0.47
1:D:190:ASP:C	1:D:192:LYS:N	2.68	0.47
1:D:215:LEU:HD11	1:D:372:VAL:HG11	1.96	0.47
1:C:350:VAL:HA	1:C:362:PHE:O	2.15	0.47
1:A:273:GLU:OE2	1:B:337:LYS:HE2	2.14	0.46
1:D:301:ALA:O	1:D:305:LEU:HD22	2.15	0.46
1:A:506:LYS:O	1:A:510:GLU:HG3	2.15	0.46
1:D:353:ARG:HH22	1:D:364:GLU:CD	2.17	0.46
1:D:151:GLU:HG2	1:D:155:LEU:HD22	1.98	0.46

*Continued on next page...*

*Continued from previous page...*

Atom-1	Atom-2	Distance(Å)	Clash(Å)
1:C:506:LYS:O	1:C:510:GLU:HG3	2.16	0.46
1:A:89:GLN:HE22	1:A:504:ALA:N	2.13	0.46
1:B:188:LYS:HZ3	1:B:191:GLY:H	1.62	0.46
1:B:9:VAL:O	1:B:9:VAL:HG13	2.14	0.46
1:A:75:GLN:HE21	1:B:13:PRO:HG3	1.77	0.46
1:C:266:MET:HE2	1:C:269:LEU:HD23	1.98	0.46
1:D:117:GLN:O	1:D:118:ASN:HB2	2.15	0.46
1:C:221:ILE:HD11	1:C:324:LEU:HD11	1.97	0.46
1:A:498:LEU:HD22	1:A:502:LYS:HG3	1.98	0.46
1:B:206:ALA:HA	1:B:384:ILE:CD1	2.46	0.46
1:D:272:GLU:HG2	1:D:275:MET:HE3	1.96	0.46
1:D:227:HIS:CD2	1:D:229:ARG:H	2.33	0.46
1:D:326:LYS:HB3	1:D:370:LYS:HB2	1.98	0.46
1:B:239:ILE:HD11	1:B:347:ALA:CB	2.46	0.46
1:B:221:ILE:HD11	1:B:324:LEU:HD11	1.98	0.46
1:B:106:GLU:HB2	1:B:446:ILE:HG12	1.96	0.46
1:C:488:ASP:OD1	1:C:490:LEU:HB2	2.15	0.46
1:A:204:LYS:HD3	1:A:388:GLU:OE2	2.15	0.46
1:C:227:HIS:CD2	1:C:229:ARG:HB2	2.51	0.46
1:D:227:HIS:HD2	1:D:229:ARG:H	1.63	0.46
1:C:45:PRO:HB2	1:C:481:VAL:HG21	1.97	0.45
1:C:358:GLU:HB3	4:C:3188:HOH:O	2.15	0.45
1:C:65:CYS:HB3	1:C:97:THR:OG1	2.16	0.45
1:C:35:ILE:HD13	1:C:35:ILE:HA	1.85	0.45
1:D:466:VAL:CG2	1:D:479:ILE:HG12	2.35	0.45
1:D:76:HIS:HD2	1:D:78:ALA:N	2.13	0.45
1:C:303:HIS:O	1:C:307:LYS:HG3	2.16	0.45
1:B:215:LEU:HD23	1:B:215:LEU:C	2.37	0.45
1:D:372:VAL:CG1	1:D:373:THR:N	2.79	0.45
1:B:311:MET:HE1	1:B:350:VAL:HG11	1.99	0.45
1:B:76:HIS:CD2	1:B:78:ALA:H	2.34	0.45
1:A:51:MET:CE	1:B:77:PRO:HB2	2.46	0.45
1:C:380:THR:O	1:C:384:ILE:HG12	2.15	0.45
1:A:266:MET:HE1	1:A:269:LEU:HD23	1.97	0.45
1:D:54:ASP:OD2	1:D:58:ASP:HB2	2.16	0.45
1:C:189:LYS:HG3	1:C:190:ASP:OD2	2.16	0.45
1:D:98:THR:O	1:D:102:VAL:HG23	2.17	0.45
1:C:318:LYS:O	1:C:322:GLU:HG3	2.16	0.45
1:B:235:GLU:O	1:B:348:GLU:O	2.35	0.45
1:D:106:GLU:CB	1:D:446:ILE:HG12	2.47	0.45
1:C:249:LYS:HB2	1:D:269:LEU:HD21	1.99	0.45
1:D:243:ASN:OD1	1:D:334:THR:HA	2.17	0.45

*Continued on next page...*

*Continued from previous page...*

Atom-1	Atom-2	Distance(Å)	Clash(Å)
1:A:378:GLY:N	1:A:384:ILE:HD11	2.33	0.45
1:D:290:VAL:HG13	1:D:311:MET:HE1	1.99	0.45
1:A:215:LEU:HD11	1:A:372:VAL:CG1	2.47	0.45
1:D:217:ARG:NH2	4:D:4002:HOH:O	2.45	0.44
1:B:197:LEU:HD22	1:B:395:VAL:CG1	2.47	0.44
1:B:240:ALA:HB3	1:B:291:VAL:HG22	1.98	0.44
1:B:180:GLU:HB3	1:B:215:LEU:HD12	1.99	0.44
1:A:243:ASN:O	1:A:295:LYS:HG2	2.17	0.44
1:D:165:LYS:O	1:D:166:ASN:C	2.53	0.44
1:A:159:ALA:O	1:A:163:THR:HG23	2.17	0.44
1:C:520:ASP:HB3	1:D:50:LYS:HG2	1.98	0.44
1:C:396:LYS:HE3	4:C:3119:HOH:O	2.17	0.44
1:B:204:LYS:HD2	1:B:384:ILE:HG22	1.98	0.44
1:D:330:ALA:HB2	1:D:345:GLY:HA3	1.99	0.44
1:C:154:LEU:HG	1:C:398:VAL:HG13	1.99	0.44
1:A:244:GLU:CB	1:A:334:THR:O	2.65	0.44
1:A:256:LYS:HE2	1:B:256:LYS:HB2	1.99	0.44
1:C:235:GLU:O	1:C:348:GLU:O	2.36	0.44
1:C:459:THR:HG22	1:C:460:VAL:N	2.32	0.44
1:B:386:GLU:HA	1:B:386:GLU:OE2	2.17	0.44
1:B:14:GLU:O	1:B:14:GLU:HG3	2.18	0.44
1:C:50:LYS:HD2	1:C:68:ILE:HD13	2.00	0.44
1:D:170:HIS:HD2	1:D:211:GLU:HG2	1.80	0.44
1:A:52:LEU:HD11	1:A:68:ILE:HA	2.00	0.44
1:A:227:HIS:HA	1:A:228:PRO:HD3	1.86	0.44
1:B:197:LEU:CD2	1:B:395:VAL:HG12	2.47	0.44
1:C:35:ILE:HD11	1:C:74:LEU:HD22	1.99	0.44
1:A:67:THR:O	1:A:71:LYS:HG2	2.18	0.44
1:B:488:ASP:OD1	1:B:490:LEU:HB2	2.18	0.43
1:A:9:VAL:O	1:A:11:ILE:HG12	2.18	0.43
1:C:383:VAL:O	1:C:387:VAL:HG23	2.19	0.43
1:D:49:ASP:HB3	1:D:62:THR:O	2.18	0.43
1:D:480:ASP:HB3	1:D:485:LYS:O	2.18	0.43
1:B:416:ILE:HD13	1:B:466:VAL:HG12	2.00	0.43
1:A:326:LYS:HB3	1:A:370:LYS:HB2	1.99	0.43
1:D:108:LEU:CD2	1:D:516:LEU:HD13	2.48	0.43
1:B:506:LYS:O	1:B:510:GLU:HG3	2.19	0.43
1:B:334:THR:HG22	1:B:335:ASN:ND2	2.34	0.43
1:D:501:LYS:HE3	1:D:501:LYS:HA	2.00	0.43
1:C:243:ASN:O	1:C:295:LYS:HG2	2.19	0.43
1:D:190:ASP:OD2	1:D:190:ASP:O	2.37	0.43
1:D:204:LYS:HD3	1:D:388:GLU:OE2	2.18	0.43

*Continued on next page...*

*Continued from previous page...*

Atom-1	Atom-2	Distance(Å)	Clash(Å)
1:D:227:HIS:HB3	1:D:230:MET:HG3	2.01	0.43
1:A:37:GLU:O	1:A:40:ARG:HG2	2.18	0.43
1:A:266:MET:O	1:A:270:GLU:HG3	2.19	0.43
1:C:269:LEU:HA	1:C:269:LEU:HD12	1.92	0.43
1:B:370:LYS:HE3	4:B:2087:HOH:O	2.17	0.43
1:C:123:ILE:HG21	1:C:432:LYS:HB2	2.01	0.43
1:D:450:THR:HG22	4:D:4013:HOH:O	2.18	0.43
1:A:449:LYS:HG3	1:A:459:THR:OG1	2.18	0.43
1:A:157:ILE:HD13	1:A:495:ILE:HG13	2.00	0.43
1:A:356:ALA:O	1:A:358:GLU:HG2	2.19	0.43
1:C:413:ALA:HB3	1:C:414:PRO:HD3	1.99	0.43
1:C:49:ASP:OD1	1:C:63:ASN:HB2	2.18	0.42
1:B:170:HIS:HD2	1:B:211:GLU:HG2	1.78	0.42
1:A:103:ILE:HG12	1:A:446:ILE:HD11	2.00	0.42
1:D:334:THR:HG22	1:D:335:ASN:HD22	1.83	0.42
1:B:121:PRO:O	1:B:125:THR:HB	2.19	0.42
1:C:106:GLU:CB	1:C:446:ILE:HG12	2.49	0.42
1:A:98:THR:O	1:A:102:VAL:HG23	2.19	0.42
1:D:88:THR:HA	1:D:91:LYS:NZ	2.34	0.42
1:C:195:VAL:O	1:C:399:LYS:HE2	2.18	0.42
1:D:272:GLU:HA	1:D:275:MET:HE3	2.00	0.42
1:A:215:LEU:HD11	1:A:372:VAL:HG13	2.00	0.42
1:C:377:ARG:C	1:C:384:ILE:HD11	2.39	0.42
1:D:244:GLU:CB	1:D:334:THR:O	2.66	0.42
1:B:311:MET:CE	1:B:350:VAL:HG11	2.49	0.42
1:D:190:ASP:O	1:D:192:LYS:N	2.52	0.42
1:B:259:ILE:CD1	1:B:265:LEU:HD23	2.49	0.42
1:B:303:HIS:HD2	4:B:2090:HOH:O	2.02	0.42
1:C:184:GLN:NE2	1:C:184:GLN:HA	2.34	0.42
1:C:32:ALA:HB1	1:C:82:MET:HE1	2.00	0.42
1:C:235:GLU:OE2	1:C:235:GLU:HA	2.20	0.42
1:A:33:ARG:O	1:A:37:GLU:HG3	2.19	0.42
1:D:282:HIS:HE1	1:D:339:LEU:O	2.01	0.42
1:D:52:LEU:HD11	1:D:68:ILE:HA	2.02	0.42
1:D:197:LEU:HD22	1:D:395:VAL:HG13	1.99	0.42
1:A:257:ILE:HB	1:B:255:ALA:CB	2.49	0.42
1:B:313:VAL:HG21	1:B:361:ILE:HD13	2.02	0.42
1:D:88:THR:HA	1:D:91:LYS:HZ2	1.84	0.42
1:D:217:ARG:HA	1:D:372:VAL:HG22	2.02	0.42
1:A:205:LYS:HD3	1:A:205:LYS:HA	1.83	0.42
1:C:98:THR:O	1:C:102:VAL:HG23	2.20	0.42
1:B:146:VAL:HG22	1:B:147:ASP:H	1.85	0.42

*Continued on next page...*

*Continued from previous page...*

Atom-1	Atom-2	Distance(Å)	Clash(Å)
1:A:76:HIS:HD2	1:A:78:ALA:H	1.66	0.42
1:B:35:ILE:HA	1:B:35:ILE:HD13	1.89	0.42
1:A:166:ASN:CB	1:B:517:ARG:HD2	2.35	0.42
1:C:266:MET:HE2	1:C:266:MET:HA	2.02	0.42
1:A:62:THR:CG2	1:A:386:GLU:OE2	2.68	0.42
1:B:378:GLY:N	1:B:384:ILE:HD11	2.35	0.41
1:A:227:HIS:HD2	1:A:229:ARG:HB2	1.84	0.41
1:B:470:HIS:HA	1:B:477:ILE:HB	2.02	0.41
1:C:76:HIS:HA	1:C:77:PRO:HD3	1.93	0.41
1:A:110:LYS:HD2	1:A:442:ASP:OD1	2.20	0.41
1:C:165:LYS:HE2	4:C:3120:HOH:O	2.18	0.41
1:B:195:VAL:HB	1:B:399:LYS:HG3	2.02	0.41
1:B:276:LEU:HD13	1:B:300:LEU:HB3	2.03	0.41
1:A:330:ALA:HB2	1:A:345:GLY:CA	2.51	0.41
1:A:490:LEU:HD12	1:A:490:LEU:HA	1.93	0.41
1:C:372:VAL:HG13	1:C:373:THR:N	2.35	0.41
1:C:76:HIS:CD2	1:C:77:PRO:HD2	2.55	0.41
1:C:276:LEU:HA	1:C:276:LEU:HD12	1.95	0.41
1:C:445:LYS:C	1:C:448:PRO:HD2	2.40	0.41
1:A:49:ASP:OD1	1:A:63:ASN:HB2	2.21	0.41
1:C:215:LEU:HD11	1:C:372:VAL:HG11	2.01	0.41
1:B:283:ILE:HG21	1:B:291:VAL:HG21	2.02	0.41
1:A:257:ILE:HB	1:B:255:ALA:HB2	2.01	0.41
1:C:165:LYS:O	1:C:168:GLU:HG2	2.20	0.41
1:B:352:GLU:HA	1:B:360:MET:O	2.20	0.41
1:B:516:LEU:HA	1:B:516:LEU:HD12	1.88	0.41
1:B:218:GLY:HA3	1:B:363:VAL:O	2.21	0.41
1:D:397:VAL:HB	1:D:497:PRO:HG2	2.03	0.41
1:D:148:PRO:O	1:D:402:MET:HG2	2.21	0.41
1:D:459:THR:HG22	1:D:460:VAL:N	2.35	0.41
1:B:271:GLN:O	1:B:275:MET:HE2	2.20	0.41
1:C:151:GLU:HG2	1:C:155:LEU:HD22	2.02	0.41
1:A:240:ALA:HB3	1:A:291:VAL:HG22	2.03	0.41
1:B:163:THR:HB	1:B:171:LYS:HZ1	1.80	0.41
1:C:163:THR:HG22	1:C:171:LYS:NZ	2.36	0.41
1:B:290:VAL:HG13	1:B:311:MET:CE	2.51	0.41
1:B:67:THR:O	1:B:71:LYS:HG2	2.20	0.41
1:C:29:ILE:HD13	1:C:112:GLU:HB2	2.02	0.41
1:D:171:LYS:HG3	1:D:172:GLU:N	2.36	0.41
1:A:146:VAL:CG2	1:A:147:ASP:N	2.84	0.41
1:B:217:ARG:HA	1:B:372:VAL:HG23	2.03	0.41
1:D:204:LYS:HB3	1:D:384:ILE:HG23	2.03	0.41

*Continued on next page...*

Continued from previous page...

Atom-1	Atom-2	Distance(Å)	Clash(Å)
1:A:271:GLN:HG3	1:A:275:MET:CE	2.50	0.41
1:A:266:MET:CE	1:A:269:LEU:HD23	2.51	0.41
1:C:127:GLY:HA3	1:C:436:ALA:HB3	2.03	0.41
1:A:470:HIS:HA	1:A:477:ILE:HB	2.03	0.41
1:C:146:VAL:CG2	1:C:153:THR:HG21	2.37	0.40
1:D:76:HIS:CD2	1:D:78:ALA:HB3	2.56	0.40
1:D:384:ILE:HG22	1:D:385:ASP:N	2.36	0.40
1:B:239:ILE:HD11	1:B:347:ALA:HB2	2.03	0.40
1:B:396:LYS:HG3	4:B:2083:HOH:O	2.19	0.40
1:A:18:ARG:HA	1:A:521:VAL:O	2.20	0.40
1:A:106:GLU:HB2	1:A:446:ILE:HG12	2.03	0.40
1:A:473:ARG:HB2	1:A:477:ILE:HG13	2.03	0.40
1:A:404:ASP:O	1:A:406:ALA:N	2.50	0.40
1:A:446:ILE:HD12	1:A:447:ILE:N	2.37	0.40
1:D:311:MET:HE1	1:D:350:VAL:HG11	2.02	0.40
1:A:154:LEU:HG	1:A:398:VAL:HG13	2.04	0.40
1:D:446:ILE:O	1:D:450:THR:CG2	2.53	0.40
1:A:271:GLN:HG3	1:A:275:MET:HE2	2.02	0.40
1:D:227:HIS:HA	1:D:228:PRO:HD3	1.86	0.40
1:C:296:GLY:HA2	1:C:315:ARG:HD2	2.02	0.40
1:D:367:LYS:NZ	1:D:367:LYS:HB3	2.37	0.40
1:B:110:LYS:HA	1:B:110:LYS:HE2	2.02	0.40
1:A:463:LEU:HD13	1:A:463:LEU:HA	1.90	0.40

All (7) symmetry-related close contacts are listed below. The label for Atom-2 includes the symmetry operator and encoded unit-cell translations to be applied.

Atom-1	Atom-2	Distance(Å)	Clash(Å)
4:A:1162:HOH:O	4:B:2002:HOH:O[4_555]	0.56	1.64
4:C:3159:HOH:O	4:D:4143:HOH:O[4_555]	0.71	1.49
4:C:3137:HOH:O	4:D:4115:HOH:O[4_555]	0.74	1.46
1:C:272:GLU:OE2	1:D:253:THR:OG1[4_555]	2.01	0.19
4:C:3148:HOH:O	4:D:4139:HOH:O[4_555]	2.04	0.16
1:C:380:THR:OG1	1:D:84:GLU:OE1[4_555]	2.14	0.06
4:B:2067:HOH:O	4:D:4112:HOH:O[2_656]	2.15	0.05

## 5.3 Torsion angles

### 5.3.1 Protein backbone ⓘ

In the following table, the Percentiles column shows the percent Ramachandran outliers of the chain as a percentile score with respect to all X-ray entries followed by that with respect to entries



of similar resolution. The Analysed column shows the number of residues for which the backbone conformation was analysed, and the total number of residues.

Mol	Chain	Analysed	Favoured	Allowed	Outliers	Percentiles	
1	A	516/548 (94%)	504 (98%)	10 (2%)	2 (0%)	43	52
1	B	516/548 (94%)	503 (98%)	10 (2%)	3 (1%)	33	39
1	C	516/548 (94%)	500 (97%)	12 (2%)	4 (1%)	27	30
1	D	516/548 (94%)	502 (97%)	11 (2%)	3 (1%)	33	39
All	All	2064/2192 (94%)	2009 (97%)	43 (2%)	12 (1%)	33	39

All (12) Ramachandran outliers are listed below:

Mol	Chain	Res	Type
1	A	235	GLU
1	B	10	VAL
1	B	235	GLU
1	C	235	GLU
1	D	235	GLU
1	D	367	LYS
1	A	367	LYS
1	B	367	LYS
1	C	190	ASP
1	C	367	LYS
1	D	190	ASP
1	C	10	VAL

### 5.3.2 Protein sidechains ⓘ

In the following table, the Percentiles column shows the percent sidechain outliers of the chain as a percentile score with respect to all X-ray entries followed by that with respect to entries of similar resolution. The Analysed column shows the number of residues for which the sidechain conformation was analysed, and the total number of residues.

Mol	Chain	Analysed	Rotameric	Outliers	Percentiles	
1	A	423/441 (96%)	398 (94%)	25 (6%)	28	35
1	B	423/441 (96%)	399 (94%)	24 (6%)	29	37
1	C	423/441 (96%)	400 (95%)	23 (5%)	31	40
1	D	423/441 (96%)	394 (93%)	29 (7%)	22	27
All	All	1692/1764 (96%)	1591 (94%)	101 (6%)	27	35

All (101) residues with a non-rotameric sidechain are listed below:



Mol	Chain	Res	Type
1	A	14	GLU
1	A	30	LEU
1	A	62	THR
1	A	82	MET
1	A	107	LEU
1	A	154	LEU
1	A	155	LEU
1	A	171	LYS
1	A	229	ARG
1	A	238	LYS
1	A	258	ASN
1	A	269	LEU
1	A	305	LEU
1	A	358	GLU
1	A	372	VAL
1	A	375	LEU
1	A	377	ARG
1	A	446	ILE
1	A	459	THR
1	A	463	LEU
1	A	490	LEU
1	A	496	GLU
1	A	498	LEU
1	A	501	LYS
1	A	516	LEU
1	B	14	GLU
1	B	30	LEU
1	B	82	MET
1	B	125	THR
1	B	147	ASP
1	B	154	LEU
1	B	155	LEU
1	B	169	SER
1	B	211	GLU
1	B	229	ARG
1	B	241	LEU
1	B	269	LEU
1	B	305	LEU
1	B	368	ASN
1	B	375	LEU
1	B	423	ASP
1	B	435	LEU
1	B	446	ILE

*Continued on next page...*

*Continued from previous page...*

Mol	Chain	Res	Type
1	B	463	LEU
1	B	483	GLU
1	B	490	LEU
1	B	498	LEU
1	B	501	LYS
1	B	516	LEU
1	C	14	GLU
1	C	30	LEU
1	C	82	MET
1	C	107	LEU
1	C	153	THR
1	C	154	LEU
1	C	155	LEU
1	C	241	LEU
1	C	269	LEU
1	C	305	LEU
1	C	315	ARG
1	C	367	LYS
1	C	375	LEU
1	C	377	ARG
1	C	435	LEU
1	C	446	ILE
1	C	450	THR
1	C	459	THR
1	C	463	LEU
1	C	483	GLU
1	C	490	LEU
1	C	498	LEU
1	C	516	LEU
1	D	14	GLU
1	D	17	GLN
1	D	30	LEU
1	D	58	ASP
1	D	82	MET
1	D	107	LEU
1	D	125	THR
1	D	147	ASP
1	D	152	GLU
1	D	154	LEU
1	D	155	LEU
1	D	163	THR
1	D	169	SER

*Continued on next page...*

*Continued from previous page...*

Mol	Chain	Res	Type
1	D	211	GLU
1	D	229	ARG
1	D	241	LEU
1	D	269	LEU
1	D	305	LEU
1	D	367	LYS
1	D	375	LEU
1	D	377	ARG
1	D	380	THR
1	D	435	LEU
1	D	446	ILE
1	D	450	THR
1	D	490	LEU
1	D	498	LEU
1	D	501	LYS
1	D	516	LEU

Some sidechains can be flipped to improve hydrogen bonding and reduce clashes. All (56) such sidechains are listed below:

Mol	Chain	Res	Type
1	A	28	ASN
1	A	75	GLN
1	A	76	HIS
1	A	89	GLN
1	A	117	GLN
1	A	118	ASN
1	A	184	GLN
1	A	227	HIS
1	A	258	ASN
1	A	282	HIS
1	A	285	GLN
1	A	368	ASN
1	B	28	ASN
1	B	76	HIS
1	B	89	GLN
1	B	117	GLN
1	B	118	ASN
1	B	170	HIS
1	B	184	GLN
1	B	258	ASN
1	B	282	HIS
1	B	285	GLN

*Continued on next page...*

*Continued from previous page...*

Mol	Chain	Res	Type
1	B	303	HIS
1	B	335	ASN
1	B	368	ASN
1	B	503	GLN
1	C	28	ASN
1	C	76	HIS
1	C	89	GLN
1	C	117	GLN
1	C	118	ASN
1	C	170	HIS
1	C	184	GLN
1	C	227	HIS
1	C	282	HIS
1	C	285	GLN
1	C	303	HIS
1	C	335	ASN
1	C	368	ASN
1	C	428	GLN
1	C	503	GLN
1	D	17	GLN
1	D	28	ASN
1	D	75	GLN
1	D	76	HIS
1	D	89	GLN
1	D	117	GLN
1	D	118	ASN
1	D	170	HIS
1	D	184	GLN
1	D	227	HIS
1	D	282	HIS
1	D	285	GLN
1	D	303	HIS
1	D	335	ASN
1	D	368	ASN

### 5.3.3 RNA ⓘ

There are no RNA chains in this entry.

## 5.4 Non-standard residues in protein, DNA, RNA chains ⓘ

There are no non-standard protein/DNA/RNA residues in this entry.

## 5.5 Carbohydrates

There are no carbohydrates in this entry.

## 5.6 Ligand geometry

Of 8 ligands modelled in this entry, 4 are monoatomic - leaving 4 for Mogul analysis.

In the following table, the Counts columns list the number of bonds (or angles) for which Mogul statistics could be retrieved, the number of bonds (or angles) that are observed in the model and the number of bonds (or angles) that are defined in the chemical component dictionary. The Link column lists molecule types, if any, to which the group is linked. The Z score for a bond length (or angle) is the number of standard deviations the observed value is removed from the expected value. A bond length (or angle) with  $|Z| > 2$  is considered an outlier worth inspection. RMSZ is the root-mean-square of all Z scores of the bond lengths (or angles).

Mol	Type	Chain	Res	Link	Bond lengths			Bond angles		
					Counts	RMSZ	# Z  > 2	Counts	RMSZ	# Z  > 2
3	ANP	A	1528	2	33,33,33	1.49	6 (18%)	51,52,52	1.33	7 (13%)
3	ANP	B	2528	2	33,33,33	1.39	6 (18%)	51,52,52	1.41	7 (13%)
3	ANP	C	3528	2	33,33,33	1.43	8 (24%)	51,52,52	1.32	6 (11%)
3	ANP	D	4528	2	33,33,33	1.42	7 (21%)	51,52,52	1.32	6 (11%)

In the following table, the Chirals column lists the number of chiral outliers, the number of chiral centers analysed, the number of these observed in the model and the number defined in the chemical component dictionary. Similar counts are reported in the Torsion and Rings columns. '-' means no outliers of that kind were identified.

Mol	Type	Chain	Res	Link	Chirals	Torsions	Rings
3	ANP	A	1528	2	-	0/18/38/38	0/1/3/3
3	ANP	B	2528	2	-	1/18/38/38	0/1/3/3
3	ANP	C	3528	2	-	0/18/38/38	0/1/3/3
3	ANP	D	4528	2	-	0/18/38/38	0/1/3/3

All (27) bond length outliers are listed below:

Mol	Chain	Res	Type	Atoms	Z	Observed(Å)	Ideal(Å)
3	A	1528	ANP	PB-O3A	3.20	1.63	1.59
3	D	4528	ANP	PB-O3A	3.00	1.63	1.59
3	C	3528	ANP	PG-O1G	2.98	1.49	1.46
3	A	1528	ANP	PG-O1G	2.76	1.49	1.46
3	B	2528	ANP	PG-O1G	2.73	1.49	1.46
3	D	4528	ANP	PG-O1G	2.61	1.49	1.46

*Continued on next page...*

*Continued from previous page...*

Mol	Chain	Res	Type	Atoms	Z	Observed(Å)	Ideal(Å)
3	B	2528	ANP	PB-O3A	2.61	1.62	1.59
3	C	3528	ANP	PB-O3A	2.57	1.62	1.59
3	A	1528	ANP	PB-O2B	-2.56	1.47	1.55
3	D	4528	ANP	PB-O2B	-2.53	1.47	1.55
3	B	2528	ANP	PB-O2B	-2.51	1.47	1.55
3	C	3528	ANP	PB-O2B	-2.51	1.47	1.55
3	C	3528	ANP	O4'-C1'	2.29	1.44	1.41
3	A	1528	ANP	O4'-C1'	2.20	1.44	1.41
3	C	3528	ANP	PG-O2G	-2.19	1.48	1.55
3	C	3528	ANP	C2-N3	2.16	1.36	1.32
3	D	4528	ANP	O4'-C1'	2.12	1.44	1.41
3	D	4528	ANP	PG-O2G	-2.12	1.49	1.55
3	B	2528	ANP	C2-N3	2.10	1.36	1.32
3	B	2528	ANP	O4'-C1'	2.09	1.44	1.41
3	D	4528	ANP	C4-N3	2.08	1.38	1.35
3	B	2528	ANP	PG-O2G	-2.08	1.49	1.55
3	A	1528	ANP	C4-N3	2.04	1.38	1.35
3	A	1528	ANP	PG-O2G	-2.04	1.49	1.55
3	D	4528	ANP	C2-N3	2.03	1.36	1.32
3	C	3528	ANP	PA-O3A	2.02	1.63	1.59
3	C	3528	ANP	C4-N3	2.01	1.38	1.35

All (26) bond angle outliers are listed below:

Mol	Chain	Res	Type	Atoms	Z	Observed(°)	Ideal(°)
3	A	1528	ANP	O2B-PB-O1B	4.26	119.71	109.89
3	B	2528	ANP	O2B-PB-O1B	4.16	119.50	109.89
3	D	4528	ANP	O2B-PB-O1B	4.11	119.37	109.89
3	C	3528	ANP	O2B-PB-O1B	3.90	118.90	109.89
3	B	2528	ANP	O2G-PG-N3B	-3.67	96.65	106.61
3	C	3528	ANP	C8-N9-C4	-3.48	104.25	106.90
3	D	4528	ANP	C8-N9-C4	-3.37	104.33	106.90
3	B	2528	ANP	C8-N9-C4	-3.18	104.47	106.90
3	A	1528	ANP	C8-N9-C4	-3.18	104.47	106.90
3	B	2528	ANP	O1G-PG-N3B	2.90	116.20	111.83
3	D	4528	ANP	O1G-PG-N3B	-2.81	107.58	111.83
3	C	3528	ANP	C3'-C2'-C1'	2.71	105.15	100.91
3	C	3528	ANP	O1G-PG-N3B	-2.62	107.88	111.83
3	A	1528	ANP	O2G-PG-N3B	-2.45	99.96	106.61
3	B	2528	ANP	C8-N9-C1'	2.26	130.84	126.38
3	D	4528	ANP	C8-N9-C1'	2.26	130.83	126.38
3	A	1528	ANP	C8-N9-C1'	2.24	130.79	126.38

*Continued on next page...*

*Continued from previous page...*

Mol	Chain	Res	Type	Atoms	Z	Observed(°)	Ideal(°)
3	A	1528	ANP	C3'-C2'-C1'	2.21	104.36	100.91
3	A	1528	ANP	O1B-PB-N3B	-2.19	108.51	111.83
3	A	1528	ANP	O4'-C1'-C2'	-2.17	103.44	106.77
3	B	2528	ANP	C3'-C2'-C1'	2.16	104.30	100.91
3	D	4528	ANP	C3'-C2'-C1'	2.16	104.29	100.91
3	C	3528	ANP	C8-N9-C1'	2.15	130.61	126.38
3	B	2528	ANP	O4'-C1'-C2'	-2.04	103.64	106.77
3	C	3528	ANP	O1B-PB-N3B	-2.04	108.75	111.83
3	D	4528	ANP	O4'-C1'-C2'	-2.02	103.68	106.77

There are no chirality outliers.

All (1) torsion outliers are listed below:

Mol	Chain	Res	Type	Atoms
3	B	2528	ANP	O1G-PG-N3B-PB

There are no ring outliers.

## 5.7 Other polymers ⓘ

There are no such residues in this entry.

## 5.8 Polymer linkage issues

There are no chain breaks in this entry.

## 6 Fit of model and data ⓘ

### 6.1 Protein, DNA and RNA chains ⓘ

In the following table, the column labelled ‘#RSRZ > 2’ contains the number (and percentage) of RSRZ outliers, followed by percent RSRZ outliers for the chain as percentile scores relative to all X-ray entries and entries of similar resolution. The OWAB column contains the minimum, median, 95<sup>th</sup> percentile and maximum values of the occupancy-weighted average B-factor per residue. The column labelled ‘Q < 0.9’ lists the number of (and percentage) of residues with an average occupancy less than 0.9.

Mol	Chain	Analysed	<RSRZ>	#RSRZ>2	OWAB(Å <sup>2</sup> )	Q<0.9
1	A	518/548 (94%)	0.38	15 (2%) 49 59	9, 23, 41, 83	0
1	B	518/548 (94%)	0.45	21 (4%) 35 46	11, 24, 40, 82	0
1	C	518/548 (94%)	0.61	27 (5%) 26 36	8, 22, 41, 77	0
1	D	518/548 (94%)	0.37	16 (3%) 47 56	11, 24, 41, 77	0
All	All	2072/2192 (94%)	0.45	79 (3%) 38 49	8, 23, 41, 83	0

All (79) RSRZ outliers are listed below:

Mol	Chain	Res	Type	RSRZ
1	A	526	ALA	5.7
1	C	526	ALA	5.2
1	D	9	VAL	5.1
1	A	9	VAL	4.9
1	C	190	ASP	4.6
1	D	191	GLY	4.4
1	C	56	LEU	4.3
1	B	190	ASP	4.3
1	D	56	LEU	4.3
1	A	189	LYS	4.2
1	C	55	SER	4.0
1	C	191	GLY	4.0
1	B	189	LYS	4.0
1	C	58	ASP	3.8
1	A	525	LYS	3.8
1	B	9	VAL	3.8
1	A	15	GLY	3.6
1	C	192	LYS	3.6
1	D	192	LYS	3.6
1	C	308	TYR	3.6
1	A	56	LEU	3.5

*Continued on next page...*



*Continued from previous page...*

Mol	Chain	Res	Type	RSRZ
1	C	14	GLU	3.5
1	D	525	LYS	3.5
1	B	526	ALA	3.5
1	C	189	LYS	3.4
1	A	190	ASP	3.4
1	C	9	VAL	3.3
1	A	192	LYS	3.2
1	D	55	SER	3.2
1	D	526	ALA	3.2
1	C	525	LYS	3.1
1	C	349	VAL	2.9
1	B	308	TYR	2.9
1	D	58	ASP	2.9
1	D	190	ASP	2.9
1	B	56	LEU	2.9
1	D	235	GLU	2.9
1	A	191	GLY	2.8
1	B	14	GLU	2.8
1	C	329	GLY	2.7
1	D	189	LYS	2.7
1	C	355	LEU	2.7
1	C	356	ALA	2.7
1	B	525	LYS	2.7
1	D	367	LYS	2.6
1	C	57	GLY	2.6
1	C	346	TYR	2.5
1	A	166	ASN	2.5
1	D	14	GLU	2.5
1	B	72	ILE	2.5
1	B	367	LYS	2.5
1	B	483	GLU	2.5
1	B	15	GLY	2.4
1	C	367	LYS	2.4
1	B	424	GLU	2.4
1	D	13	PRO	2.4
1	A	55	SER	2.4
1	B	304	TYR	2.4
1	C	225	VAL	2.3
1	A	17	GLN	2.3
1	A	235	GLU	2.3
1	C	229	ARG	2.3
1	B	235	GLU	2.3

*Continued on next page...*

*Continued from previous page...*

Mol	Chain	Res	Type	RSRZ
1	B	188	LYS	2.2
1	A	14	GLU	2.2
1	B	191	GLY	2.2
1	B	58	ASP	2.2
1	C	357	GLY	2.2
1	D	491	GLU	2.2
1	C	235	GLU	2.1
1	B	472	ASN	2.1
1	B	428	GLN	2.1
1	D	365	GLY	2.1
1	C	380	THR	2.1
1	A	491	GLU	2.0
1	C	164	GLY	2.0
1	C	231	PRO	2.0
1	C	226	VAL	2.0
1	B	372	VAL	2.0

## 6.2 Non-standard residues in protein, DNA, RNA chains ⓘ

There are no non-standard protein/DNA/RNA residues in this entry.

## 6.3 Carbohydrates ⓘ

There are no carbohydrates in this entry.

## 6.4 Ligands ⓘ

In the following table, the Atoms column lists the number of modelled atoms in the group and the number defined in the chemical component dictionary. LLDF column lists the quality of electron density of the group with respect to its neighbouring residues in protein, DNA or RNA chains. The B-factors column lists the minimum, median, 95<sup>th</sup> percentile and maximum values of B factors of atoms in the group. The column labelled 'Q < 0.9' lists the number of atoms with occupancy less than 0.9.

Mol	Type	Chain	Res	Atoms	RSR	LLDF	B-factors(Å <sup>2</sup> )	Q<0.9
2	MG	C	3527	1/1	0.37	6.13	85,85,85,85	0
2	MG	A	1527	1/1	0.33	5.36	71,71,71,71	0
3	ANP	C	3528	31/31	0.27	3.64	46,58,60,62	0
2	MG	B	2527	1/1	0.28	3.50	39,39,39,39	0
2	MG	D	4527	1/1	0.22	3.32	57,57,57,57	0

*Continued on next page...*

*Continued from previous page...*

Mol	Type	Chain	Res	Atoms	RSR	LLDF	B-factors( $\text{\AA}^2$ )	Q<0.9
3	ANP	B	2528	31/31	0.21	2.40	50,59,65,66	0
3	ANP	D	4528	31/31	0.20	2.27	46,54,57,60	0
3	ANP	A	1528	31/31	0.19	1.91	43,47,56,58	0

## 6.5 Other polymers

There are no such residues in this entry.